



HAL
open science

Prediction of Evapotranspiration and Yields of Maize: An Inter-comparison among 29 Maize Models and Future Plans

Bruce Kimball, Kenneth Boote, Jerry Hatfield, Laj Ahuja, Claudio Stockle,
Sotirios Archontoulis, Christian Baron, Bruno Basso, Patrick Bertuzzi, Julie
Constantin, et al.

► To cite this version:

Bruce Kimball, Kenneth Boote, Jerry Hatfield, Laj Ahuja, Claudio Stockle, et al.. Prediction of Evapotranspiration and Yields of Maize: An Inter-comparison among 29 Maize Models and Future Plans. ICROP2020: Second International Crop Modelling Symposium , Feb 2020, Montpellier, France. hal-02950305

HAL Id: hal-02950305

<https://inria.hal.science/hal-02950305v1>

Submitted on 27 Sep 2020

HAL is a multi-disciplinary open access archive for the deposit and dissemination of scientific research documents, whether they are published or not. The documents may come from teaching and research institutions in France or abroad, or from public or private research centers.

L'archive ouverte pluridisciplinaire **HAL**, est destinée au dépôt et à la diffusion de documents scientifiques de niveau recherche, publiés ou non, émanant des établissements d'enseignement et de recherche français ou étrangers, des laboratoires publics ou privés.

Prediction of Evapotranspiration and Yields of Maize: An Inter-comparison among 29 Maize Models and Future Plans

Kimball Bruce¹ (bruce.kimball@usda.gov), Boote Kenneth², Hatfield Jerry³, Ahuja Laj⁴, Stockle Claudio⁵, Archontoulis Sotirios⁶, Baron Christian⁷, Basso Bruno⁸, Bertuzzi Patrick⁹, Constantin Julie¹⁰, Deryng Delphine¹¹, Dumont Benjamin¹², Durand Jean-Louis¹³, Ewert Frank¹¹, Gaiser Thomas¹⁴, Gayler Sebastian¹⁵, Hoffman Munir¹⁶, Jiang Qianjing¹⁷, Kim Soo-Hyung¹⁸, Lizaso Jon¹⁹, Moulin Sophie²⁰, Nendel Claas¹¹, Parker Philip²¹, Palosuo Taru²², Priesack Eckart²³, Qi Zhiming²⁴, Srivastava Amit¹⁴, Stella Tommaso¹¹, Tao Fulu²⁴, Thorp Kelly¹, Timlin Dennis²⁵, Twine Tracy²⁶, Webber Heidi¹¹, Willaume Magali²⁷, Williams Karina²⁸, Suyker Andrew²⁹, Evett Steven³⁰

¹ U.S. Arid-Land Agricultural Res. Center, USDA, Agricultural Research Service, Maricopa, Arizona, United States; ² University of Florida, Gainesville, Florida, United States; ³ Nat. Lab. for Agr. and Environ., USDA, Agricultural Research Service, Ames, Iowa, United States; ⁴ Agric. Systems Res. Unit, USDA, Agricultural Research Service, Ft. Collins, Colorado, United States; ⁵ Biological System Engineering, Washington State University, Pullman, Washington, United States; ⁶ Department of Agronomy, Iowa State University, Ames, Iowa, United States; ⁷ CIRAD UMR TETIS, Maison de la Télédétection, Montpellier, France; ⁸ Dept. Geological Sciences, Michigan State University, East Lansing, Michigan, United States; ⁹ US1116 AgroClim, INRA centre de recherche, Avignon, France; ¹⁰ AGIR, Université de Toulouse, INRA, INP, CastanetTolosan, France; ¹¹ Leibniz Centre for Agr. Landscape Res., Muecheberg, Germany; ¹² Department of Agronomy, ULg-GxABT, University of Liege, Gembloux, Belgium; ¹³ Unité de Rec. Pluridisciplinaire Prairie, INRA, Lusignan, France; ¹⁴ Inst. of Crop Sci. and Resource Conserva, University of Bonn, Bonn, Germany; ¹⁵ Institute of Soil Science and Land Evalu, Universitat Hohenheim, Stuttgart, Germany; ¹⁶ Crop Production Systems in the Tropics, Georg-August-Universität, Göttingen, Germany; ¹⁷ Department of Bioresource Engineering, McGill University, Sanite-Anne-de-Bellevue, Quebec, Canada; ¹⁸ Center for Urban Horticulture, University of Washington, Seattle, Washington, United States; ¹⁹ Dept. Producción Agraria-CEIGRAM, Technical University of Madrid (UPM), Madrid, Spain; ²⁰ centre de recherche Provence-Alpes-Côte, INRA, Avignon, France; ²¹ Spatial Business Integration, Darmstadt, Germany; ²² Natural Resources Inst. Finland (Luke), Vantaa, Finland; ²³ Institute of Biochemical Plant Pathology, Helmholtz Center Munich, Neuherberg, Germany; ²⁴ Inst. of Geographic Sci. and Nat. Resour, Chinese Academy of Science, Beijing, China; ²⁵ Crop Systems and Global Change Research, USDA, Agricultural Research Service, Beltsville, Maryland, United States; ²⁶ Department of Soil, Water, and Climate, University of Minnesota, St. Paul, Minnesota, United States; ²⁷ AGIR, Université de Toulouse, INRA, CastanetTolosan, France; ²⁸ Hadley Centre, Devon, United Kingdom; ²⁹ School of Natural Resources, University of Nebraska-Lincoln, Lincoln, Nebraska, United States; ³⁰ Conservation and Production Laboratory, USDA, Agricultural Research Service, Bushland, Texas, United States

Introduction

Crop yield can be affected by crop water use (evapotranspiration, ET) and vice versa, so when trying to simulate one or the other, it can be important to simulate both well.

Method: To determine how well 29 maize growth models can simulate ET, an inter-comparison study was initiated under the umbrella of AgMIP (Agricultural Model Inter-Comparison and Improvement Project) using eddy covariance data from Ames, IA as the standard for comparison (Kimball et al., 2019).

Results

In the first “blind” phase for which only weather, soils, phenology, and management information were provided to the modelers, estimates of seasonal ET varied from about 200 to about 700 mm (Fig. 1), and even after receiving all information, ET estimates still varied by a factor of two or more. Much of the variability among the models was due to differing estimates of potential evapotranspiration. The ensemble median values were generally close to the observations, but a few of the models sometimes performed better. The best models varied widely in complexity in spite of having similar prediction accuracies. Models that are widely used tended to perform better, leading us to speculate that a larger number of users testing these models over a wider range of conditions likely has led to improvement. User experience and skill were also a factor in determining the accuracy of model predictions. In several cases, different versions of a model were better, such as an older soil evaporation routine was better than a newer default routine in the DSSAT family.

Future plans

However, there were several issues with the observed data, so a second round of inter-comparisons was initiated and is underway using eddy covariance data from Mead, NE and lysimeter data from Bushland, TX. Besides the ET data, these datasets feature several within-season observations of growth and soil moisture measurements at several depths.

.../...

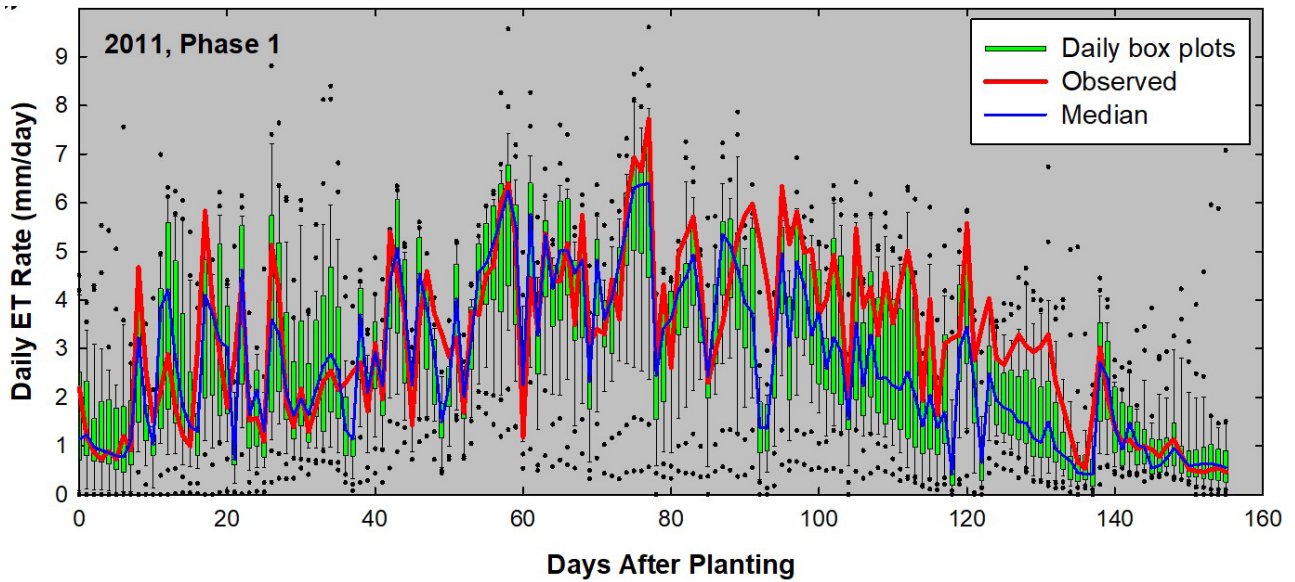


Figure 1. Box plots of daily evapotranspiration (ET) where the lower and upper limits of the box indicate the 25th and 75th percentile of ET values simulated by 29 maize growth models, respectively, the lower and upper whiskers indicate the 10th and 90th percentiles, and the points are outliers. Observed values and the median values from the 29 models are also shown. The simulated values in this plot came from Phase 1, a “blind” test whereby the modellers were only given weather, phenology, management, and soils information, but no crop response data.

Keywords: Water Use, growth, yield.

References:

1. Kimball BA, et al. (2019) Simulation of maize evapotranpiration: an inter-comparison among 29 maize models. *Agric. For. Meteorol.* 271:264-284.