



HAL
open science

Mutational Profile of Aggressive, Localised Prostate Cancer from African Caribbean Men Versus European Ancestry Men

Laurie Tonon, Gaëlle Fromont, Sandrine Boyault, Emilie Thomas, Anthony Ferrari, Anne-Sophie Sertier, Janice Kielbassa, Vincent Le Texier, Aurélie Kamoun, Nabila Elarouci, et al.

► **To cite this version:**

Laurie Tonon, Gaëlle Fromont, Sandrine Boyault, Emilie Thomas, Anthony Ferrari, et al.. Mutational Profile of Aggressive, Localised Prostate Cancer from African Caribbean Men Versus European Ancestry Men. *European Urology*, 2019, 75 (1), pp.11-15. 10.1016/j.eururo.2018.08.026 . hal-01921597

HAL Id: hal-01921597

<https://inria.hal.science/hal-01921597v1>

Submitted on 13 Nov 2018

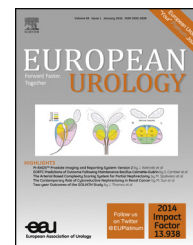
HAL is a multi-disciplinary open access archive for the deposit and dissemination of scientific research documents, whether they are published or not. The documents may come from teaching and research institutions in France or abroad, or from public or private research centers.

L'archive ouverte pluridisciplinaire **HAL**, est destinée au dépôt et à la diffusion de documents scientifiques de niveau recherche, publiés ou non, émanant des établissements d'enseignement et de recherche français ou étrangers, des laboratoires publics ou privés.

available at www.sciencedirect.com
journal homepage: www.europeanurology.com



European Association of Urology



Platinum Priority – Brief Correspondence

Editorial by XXX on pp. x–y of this issue

Mutational Profile of Aggressive, Localised Prostate Cancer from African Caribbean Men Versus European Ancestry Men

Laurie Tonon^a, Gaëlle Fromont^{b,d,k}, Sandrine Boyault^j, Emilie Thomas^a, Anthony Ferrari^a, Anne-Sophie Sertier^a, Janice Kielbassa^a, Vincent Le Texier^a, Aurélie Kamoun^l, Nabila Elarouci^l, Jacques Irani^d, Luc Multigner^e, Ivo Glynne Gut^{f,g}, Marta Gut^{f,g}, Pascal Blanchet^{e,h}, Aurélien De Reynies^l, Géraldine Cancel-Tassin^{b,c}, Alain Viari^{a,m}, Olivier Cussenot^{b,c,i,*}

^aSynergie Lyon Cancer, Plateforme de Bioinformatique 'Gilles Thomas', Centre Léon Bérard, Lyon, France; ^bCeRePP, Paris, France; ^cSorbonne Université, GRC n°5, ONCOTYPE-URO, Paris, France; ^dCHU de Poitiers, Hôpital de la Milettrie, Poitiers, France; ^eInserm U1085 – IRSET, Pointe à Pitre, Guadeloupe; ^fCNAG-CRG, Centre for Genomic Regulation, Barcelona Institute of Science and Technology, Barcelona, Spain; ^gUniversitat Pompeu Fabra, Barcelona, Spain; ^hCHU Pointe-à-Pitre/Abymes, Department of Urology, Pointe à Pitre, Guadeloupe; ⁱAssistance Publique Hôpitaux de Paris, Department of Urology, Academic Hospital Paris Est, Paris, France; ^jCentre Léon Bérard, Département de Recherche Translationnelle et de l'Innovation, Génomique des Cancers, Lyon, France; ^kCHRU de Tours, Department of Pathology, Tours, France; ^lProgramme Cartes d'Identité des Tumeurs (CIT), Ligue Nationale Contre Le Cancer, Paris, France; ^mINRIA, Montbonnot-Saint Martin, France

Article info

Article history:

Accepted August 15, 2018

Associate Editor:

James Catto

Keywords:

African ancestry
Caribbean
Mutation
Prostate cancer

Abstract

Causes of high mortality of prostate cancer in men of African ancestry living in the French West Indies are still debated, between suspicions of environmental factors and genetic susceptibility. We report an integrated genomic study of 25 tumour tissues from radical prostatectomy of aggressive (defined by International Society of Urological Pathology ≥ 3) prostate cancer patients (10 African Caribbean and 15 French Caucasian) using single nucleotide polymorphism arrays, whole-genome sequencing, and RNA sequencing. The results show that African Caribbean tumours are characterised by a more frequent deletion at 1q41–43 encompassing the DNA repair gene *PARP1*, and a higher proportion of intrachromosomal rearrangements including duplications associated with *CDK12* truncating mutations. Transcriptome analyses show an overexpression of genes related to androgen receptor activity in African Caribbean tumours, and of *PVT1*, a long non-coding RNA located at 8q24 that confirms the strong involvement of this region in prostate tumours from men of African ancestry.

Patient summary: Mortality of prostate cancer is higher in African Caribbean men than in French Caucasian men. Specificities of the former could be explained by genomic events linked with key genes such as DNA damage pathway genes *PARP1*, *CDK12*, and the oncogenic long non-coding RNA gene *PVT1* at the 8q24 prostate cancer susceptibility locus.

© 2018 Published by Elsevier B.V. on behalf of European Association of Urology.

* Corresponding author. Urology Department, Tenon Hospital, 4 rue de la Chine, 75970 Paris Cedex 20, France. Tel. +33 1 56 01 68 48; Fax: +331 56 01 76 47.
E-mail address: olivier.cussenot@aphp.fr (O. Cussenot).

<https://doi.org/10.1016/j.eururo.2018.08.026>

0302-2838/© 2018 Published by Elsevier B.V. on behalf of European Association of Urology.

Please cite this article in press as: Tonon L, et al. Mutational Profile of Aggressive, Localised Prostate Cancer from African Caribbean Men Versus European Ancestry Men. Eur Urol (2018), <https://doi.org/10.1016/j.eururo.2018.08.026>

Prostate Cancer (PCa) is a major cause of morbidity and mortality in men worldwide, causing an estimated 307 000 deaths per year. However, ethnic disparities are widely recognised with higher incidence and cancer death rates in black men than in non-Hispanic white men. Similarly, in Guadeloupe (French West Indies, FWI) where 90% of the population is of African ancestry, the standardised incidence and mortality were approximately twice of that observed in metropolitan France (mostly Caucasian population) [1].

Higher PCa incidence in men of African ancestry is largely explained by genetic factors as they display a higher prevalence of PCa risk variants [2]. However, the relationship with the highest mortality observed in black population remains debated, with involvement of not only genetic, environmental, and biological factors but also sociocultural factors. Indeed, an increased risk of PCa was associated with exposure to agricultural pesticides in epidemiological studies, including some performed in FWI [3,4]. Ethnic differences in the frequency of some genomic alterations, such as *TMPRSS2* gene fusions, *SPINK1* overexpression, *PTEN* loss or *SPOP* mutation, have been reported [5], suggesting some variability in carcinogenic pathways according to the genetic background.

To provide new insights on the differences observed in molecular alterations between PCa from men of African and Caucasian ancestry, we report here the whole-genome sequencing (WGS) and RNA sequencing (RNAseq) of 25 aggressive PCa (10 from African Caribbean [AC] and 15 from French Caucasian [FC] patients) defined by International Society of Urological Pathology ≥ 3 (Supplementary Table 1), as well as a pooled analysis of their copy number variation (CNV) profiles with an additional dataset of 132 tumour tissues from radical both aggressive and nonaggressive prostatectomy specimens [6] (Supplementary methods).

Copy number analysis of 157 tumours (56 AC + 101 FC) showed that the main somatic CNV events were amplifications at locus 8q24.21 (18%) encompassing concomitantly *PCAT1*, *MYC*, and *NCOA2* genes, and deletions at loci 8p21 encompassing *NKX3.1* (39%), 13q14 encompassing *RB1* (30%), 6q14 encompassing *ZNF292* (24%), 8p11 encompassing *FGFR1* (23%), and 16q23 encompassing *BCAR1* (22%; Fig. 1A). Notably, homozygous deletion of 10q24 (*PTEN*) was observed with a frequency of 7% only. Significant correlations were found between the deletion at 8p21 (*NKX3.1*) and the gain at 8q24.21 (*PCAT1*) ($p = 2.6 \times 10^{-4}$, Fisher exact test, Benjamini-Hochberg corrected), deletions at 10q24 (*PTEN*) and 17p13 (*TP53*) ($p = 9.5 \times 10^{-7}$, Fisher exact test, Benjamini-Hochberg corrected), and deletions at 5q21 (*NIP7P3*) and 6q22 (*CHD1*) ($p = 5.31 \times 10^{-4}$, Fisher exact test, Benjamini-Hochberg corrected; Supplementary Fig. 1). We also observed the recurrent deletions/losses at *SPOPL* and *PCDH9* loci recently reported in PCa from Chinese men (10%/13% for AC and 10%/21% for FC, respectively) [7].

Interestingly, a deletion at 1q42–43, encompassing *PARP1*, was significantly more frequent in AC patients (12/56 AC vs 4/101 FC; $p = 3.8 \times 10^{-4}$, Fisher exact test; Fig. 1B). Using RNAseq on 25 tumours, we observed that this

haploinsufficiency was related to decreased expression of genes located between *PARP1* and *TOMM20* (Supplementary Fig. 2). This molecular event could be linked to the specific exposure to organochlorine pesticides used for banana cultivation in FWI [3]. Indeed, the SNP rs7679673, located near the gene *TET2*, was shown to be associated with a higher PCa risk in men who were exposed to higher dose of the organochlorine aldrin [4]. Moreover, *TET2* and *PARP1* are both implicated in early-stage epigenetic modification at pluripotency loci during somatic cell reprogramming [8] and in androgen regulation in PCa [9]. This lower expression of *PARP1* suggests that the patients harbouring this deletion would not benefit from treatment with PARP inhibitors and should rather be explored with therapies based on homologous recombination deficiency inhibitors such as mTor inhibitors.

Based on WGS data, we identified a mean number of 4972 somatic single-base mutations (range: 1788–12 576) and 603 somatic insertion/deletion (range 318–1491) mutations per sample without any significant difference between FC and AC tumours (Supplementary Figs. 3 and 4). We observed that *CDK12* truncating mutations were more frequent in AC than in FC tumours (4/10 vs 1/15; Fig. 2). Regions of localised hypermutations, namely kataegis, were identified in 10 tumours (four AC and six FC) for 37 events but without any recurrent event (Supplementary Fig. 5).

Two germline mutations of the *BRCA2* gene (AC patients) and one from *PALB2* (FC patient) were observed (Fig. 2). Notably, the tumour with a germline frameshift mutation and a somatic homozygous deletion of *BRCA2* had the highest chromosomal instability (large-scale state transitions) score among all samples (Supplementary Fig. 6). The higher frequency of germline DNA repair gene mutations found in this cohort of AC patients (20% vs 6.7% in FC) could be compared to the higher frequency of those mutations observed in metastatic than in localised PCa, and suggested that some of these patients could benefit from PARP inhibitors or platinum-based chemotherapy.

Using RNAseq data, we found that expression level of the long non-coding RNA (lncRNA) *PVT1*, located at 8q24.21 near *FOXA1* binding sites, was significantly higher in tumours from AC patients ($p = 1 \times 10^{-3}$, Mann-Whitney test; Fig. 2). Concordantly, Yang et al. [10] reported recently that higher levels of this lncRNA were associated with poorer overall survival and disease-free survival. Moreover, they showed that *PVT1* knockdown by small interfering RNA transfection significantly inhibited PCa growth in vivo and in vitro and promoted cell apoptosis, suggesting that *PVT1* played an oncogenic role in PCa. *PVT1* expression positively correlated with the androgen activity (Spearman $\rho = 0.6$, $p = 4 \times 10^{-3}$) and *EZH2* expression (Spearman $\rho = 0.6$, $p = 4 \times 10^{-3}$; Supplementary Fig. 7).

Only three samples harboured the *TMPRSS2-ERG* fusion, whereas four others had a previously described fusion involving genes *ETV1*, *ETV4*, or *SKIL*, all from FC patients (Fig. 2). These fusions were correlated with high expression of the corresponding genes (Fig. 2). We also looked for large chromosomal rearrangements in tumours and found 5093 intra- and 424 interchromosomal events. The ratio

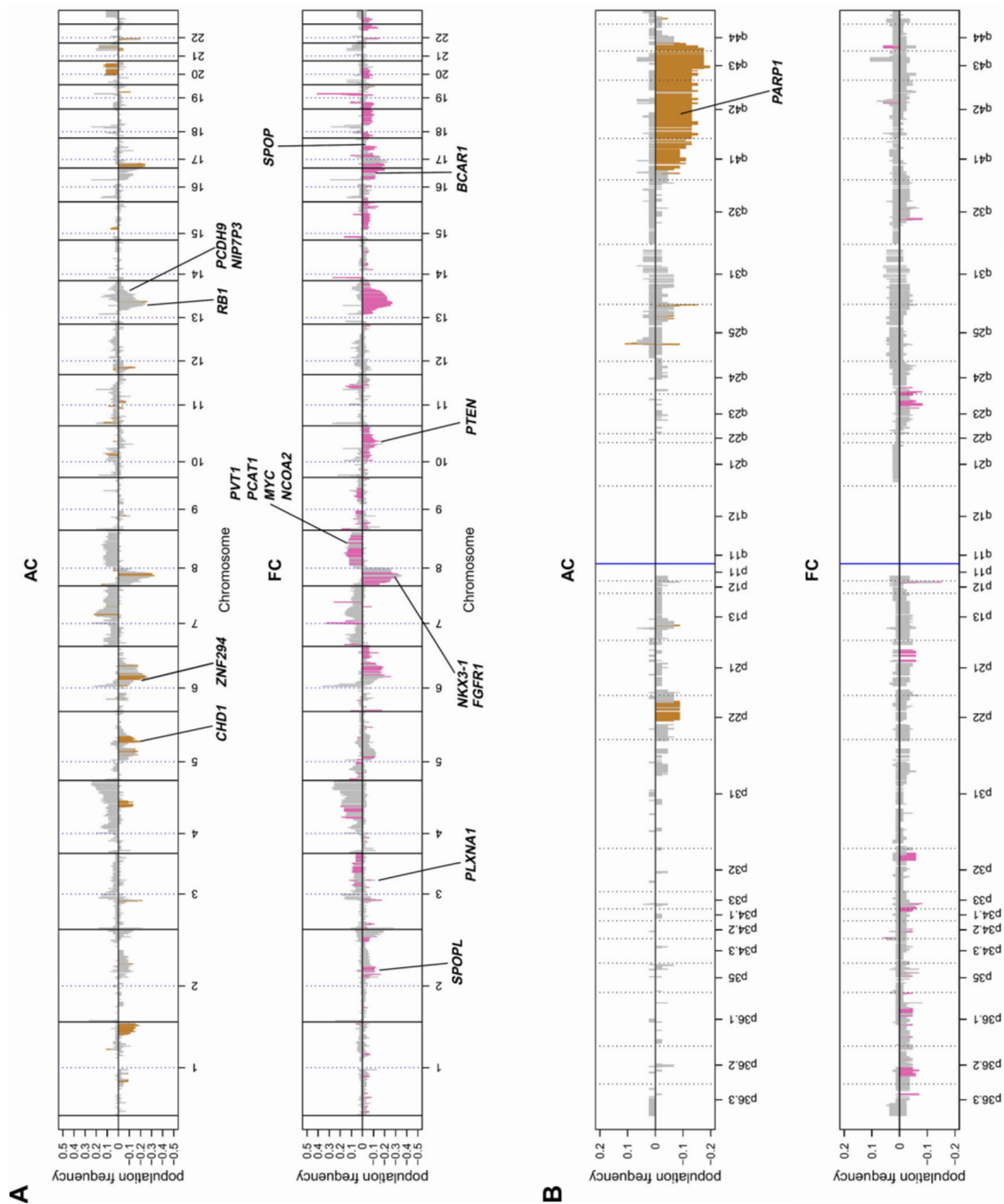


Fig. 1 – Cumulative copy number variations on 157 tumour samples for the two ancestries. Along the (A) genome and (B) chromosome 1, is represented the percentage of samples in the cohort with a copy number variation at each position (the upper part represents the gains and the lower part the losses). Events statistically more present in the African Caribbean samples are coloured in orange, whereas the ones more frequent in the Caucasian samples are coloured in blue. AC = African Caribbean; FC = French Caucasian.

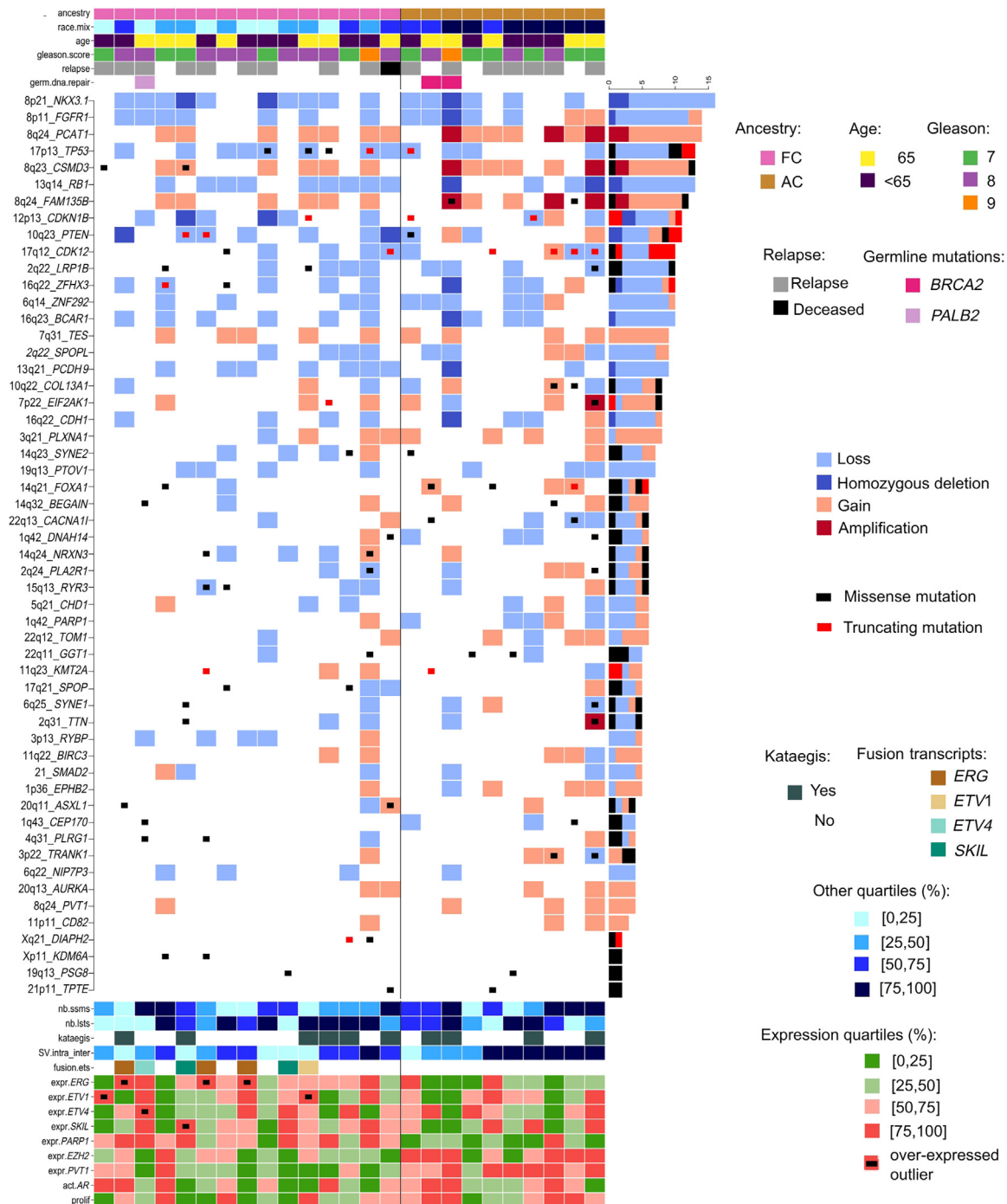


Fig. 2 – Summary of biological features and genomic alterations of 25 prostate tumours. Small somatic mutations (substitutions [SSMs] and small indels [SIMs]) and copy number variations observed in selected genes. Top rows: summary of biological features: ancestry, racial mixing score, Gleason score, relapse, and DNA mismatch repair germline mutations. Bottom rows: summary of other genomic alterations: total number of SSMs and SIMs, presence of kataegis in the sample, ratio of intra- versus inter-chromosomal structural variants, ETS gene fusion transcripts, expression values of *ERG*, *ETV1*, *ETV4*, *SKIL*, *PARP1*, *EZH2*, and *PVT1* represented by quartiles, *AR* activity signature score and proliferation signature score, represented by quartiles. AC = African Caribbean; FC = French Caucasian.

of intra- to interchromosomal rearrangements was significantly higher in AC than in FC population ($p = 4 \times 10^{-2}$, Mann-Whitney test; Supplementary Figs. 8 and 9). In addition, almost half of the AC samples (40%) showed a high proportion of duplications versus only one (6.7%) of the FC

samples, and this duplicator phenotype was associated with *CDK12* truncating mutations (Fig. 2; Supplementary Fig. 10). Similarly, Wu et al. [11] found recently that *CDK12* biallelic loss is enriched in metastatic castration-resistant PCa and that this loss is associated with focal tandem duplications.

Moreover, they showed that the *CDK12* mutations are associated with an increased level of gene fusion-induced neoantigens and high immune infiltration, suggesting that patients with these mutations could benefit from immune checkpoint immunotherapy.

The structural rearrangements more frequently observed in AC tumours, such as tandem duplications or *PARP1* haploinsufficiency, as well as the higher frequency of germline DNA repair mutations suggest that further investigations dedicated to this population with specific therapeutic protocols using checkpoint inhibitor immunotherapy, DNA-damaging therapies, or kinase-inhibiting agents are needed.

Author contributions: Olivier Cussenot had full access to all the data in the study and takes responsibility for the integrity of the data and the accuracy of the data analysis.

Study concept and design: Cussenot.

Acquisition of data: Tonon, Fromont, Boyault, Kamoun, Irani, Multigner, I. G. Gut, M. Gut, Blanchet, De Reynies, Cancel-Tassin, Viari.

Analysis and interpretation of data: Tonon, Thomas, Ferrari, Sertier, Kielbassa, Kamoun, Cancel-Tassin, Viari, Cussenot.

Drafting of the manuscript: Tonon, Thomas, Kamoun, Irani, Multigner, I.G. Gut, M. Gut, Blanchet, Cancel-Tassin, Viari, Cussenot.

Critical revision of the manuscript for important intellectual content: None.

Statistical analysis: Tonon, Thomas, Ferrari, Sertier, Kielbassa, Kamoun, Viari.

Obtaining funding: Cussenot, Viari.

Administrative, technical, or material support: Elarouci, Le Texier.

Supervision: Cussenot, Cancel-Tassin, Viari.

Other: None.

Financial disclosures: Olivier Cussenot certifies that all conflicts of interest, including specific financial interests and relationships and affiliations relevant to the subject matter or materials discussed in the manuscript (eg, employment/affiliation, grants or funding, consultancies, honoraria, stock ownership or options, expert testimony, royalties, or patents filed, received, or pending), are the following: None.

Funding/Support and role of the sponsor: This work has been funded, through the French Prostate ICGC project, by Institut National de la Santé et de la Recherche Médicale (INSERM) and Institut National du Cancer (INCa); grant INSERM CV_2011/023 (C18), with additional support from LYric (grant INCa-4662). The results presented in this study are partly based upon data generated by the national program CIT Cartes d'Identités des Tumeurs funded and developed by the Ligue Nationale Contre le Cancer.

Acknowledgments: In memoriam of Gilles Thomas who was at the initiative and conception of this study. We thank the patients for their

participation in this study, and Cécile Gaffory and Valérie Ondet for their technical assistance.

Appendix A. Supplementary data

Supplementary data associated with this article can be found, in the online version, at <https://doi.org/10.1016/j.eururo.2018.08.026>.

References

- [1] Deloumeaux J, Bhakkan B, Eyraud R, et al. Prostate cancer clinical presentation, incidence, mortality and survival in Guadeloupe over the period 2008–2013 from a population-based cancer registry. *Cancer Causes Control* 2017;28:1265–73.
- [2] Haiman CA, Chen GK, Blot WJ, et al. Characterizing genetic risk at known prostate cancer susceptibility loci in African Americans. *PLoS Genet* 2011;7:e1001387.
- [3] Emeville E, Giusti A, Coumoul X, Thomé J-P, Blanchet P, Multigner L. Associations of plasma concentrations of dichlorodiphenyldichloroethylene and polychlorinated biphenyls with prostate cancer: a case-control study in Guadeloupe (French West Indies). *Environ Health Perspect* 2015;123:317–23.
- [4] Koutros S, Berndt SI, Barry KH, et al. Genetic susceptibility loci, pesticide exposure and prostate cancer risk. *PLoS One* 2013;8:e58195.
- [5] Khani F, Mosquera JM, Park K, et al. Evidence for molecular differences in prostate cancer between African American and Caucasian men. *Clin Cancer Res* 2014;20:4925–34.
- [6] Kamoun A, Cancel-Tassin G, Fromont G, et al. Comprehensive molecular classification of localized prostate adenocarcinoma reveals a tumour subtype predictive of a non-aggressive disease. *Ann Oncol* 2018;29:1814–21.
- [7] Ren S, Wei GH, Liu D, et al. Whole-genome and transcriptome sequencing of prostate cancer identify new genetic alterations driving disease progression [figure presented]. *Eur Urol* 2018;73:322–39.
- [8] Doege CA, Inoue K, Yamashita T, et al. Early-stage epigenetic modification during somatic cell reprogramming by Parp1 and Tet2. *Nature* 2012;488:652–5.
- [9] Nickerson ML, Das S, Im KM, et al. TET2 binds the androgen receptor and loss is associated with prostate cancer. *Oncogene* 2017;36:2172–83.
- [10] Yang J, Li C, Mudd A, et al. LncRNA PVT1 predicts prognosis and regulates tumor growth in prostate cancer. *Biosci Biotechnol Biochem* 2017;81:2301–6.
- [11] Wu YM, Cieślak M, Lonigro RJ, et al. Inactivation of CDK12 delineates a distinct immunogenic class of advanced prostate cancer. *Cell* 2018;173, 1770–82.e14.