



**HAL**  
open science

## Multi-modal brain fingerprinting: a manifold approximation based framework

Kuldeep Kumar, Laurent Chauvin, Matthew Toews, Olivier Colliot, Christian Desrosiers

► **To cite this version:**

Kuldeep Kumar, Laurent Chauvin, Matthew Toews, Olivier Colliot, Christian Desrosiers. Multi-modal brain fingerprinting: a manifold approximation based framework. *NeuroImage*, 2018, 183, pp.212 - 226. 10.1016/j.neuroimage.2018.08.006 . hal-01910367

**HAL Id: hal-01910367**

**<https://inria.hal.science/hal-01910367>**

Submitted on 31 Oct 2018

**HAL** is a multi-disciplinary open access archive for the deposit and dissemination of scientific research documents, whether they are published or not. The documents may come from teaching and research institutions in France or abroad, or from public or private research centers.

L'archive ouverte pluridisciplinaire **HAL**, est destinée au dépôt et à la diffusion de documents scientifiques de niveau recherche, publiés ou non, émanant des établissements d'enseignement et de recherche français ou étrangers, des laboratoires publics ou privés.

# Multi-modal brain fingerprinting: a manifold approximation based framework

Kuldeep Kumar<sup>a,c,\*1</sup>, Laurent Chauvin<sup>a</sup>, Matthew Toews<sup>a</sup>,  
Olivier Colliot<sup>b,c,d</sup>, Christian Desrosiers<sup>a</sup>

<sup>a</sup>Laboratory for Imagery, Vision and Artificial Intelligence, École de technologie supérieure,  
1100 Notre-Dame W., Montreal, QC, Canada, H3C1K3

<sup>b</sup>Sorbonne Universités, UPMC Univ Paris 06, Inserm, CNRS, Institut du cerveau et la  
moelle (ICM) - Hôpital Pitié-Salpêtrière, Boulevard de l'hôpital, F-75013, Paris, France

<sup>c</sup>Inria Paris, Aramis project-team, 75013, Paris, France

<sup>d</sup>AP-HP, Departments of Neurology and Neuroradiology, Hôpital Pitié-Salpêtrière, 75013,  
Paris, France

---

## Abstract

This work presents an efficient framework, based on manifold approximation, for generating brain fingerprints from multi-modal data. The proposed framework represents images as bags of local features, which are used to build a subject proximity graph. Compact fingerprints are obtained by projecting this graph in a low-dimensional manifold, using spectral embedding. Experiments using the T1/T2-weighted MRI, diffusion MRI, and resting state fMRI data of 945 Human Connectome Project subjects demonstrate the benefit of combining multiple modalities, with multi-modal fingerprints more discriminative than those generated from individual modalities. Results also highlight the link between fingerprint similarity and genetic proximity, monozygotic twins having more similar fingerprints than dizygotic or non-twin siblings. This link is also reflected in the differences of feature correspondences between twin/sibling pairs, occurring in major brain structures and across hemispheres. The robustness of the proposed framework to factors like image alignment and scan resolution, as well as the reproducibility of results on retest scans, suggest the potential of multi-modal brain fingerprinting for characterizing individuals in a large cohort analysis. In addition, taking inspiration from the computer vision community,

---

<sup>1</sup>kkumar@livia.etsmtl.ca

the proposed rank retrieval evaluation based on the task of twin/sibling identification and using Mean Average Precision (MAP) can be used for a standardized comparison of future brain fingerprints.

*Keywords:* Brain fingerprint, Multi-modal, Bag-of-Features, Manifold, Structural MRI, Diffusion MRI, rfMRI netmats, MAP, HCP Twin data, Hemisphere asymmetry

---

## 1. Introduction

Despite sharing gross similarities, individual brains show a significant amount of variability [1] in terms of structure [2], function [3, 4, 5], and white matter architecture [6, 7]. Recently, various studies have focused on characterizing this variability using brain *fingerprints*, for instance, based on shape [8], functional connectivity [9, 10], white matter fiber geometry [11] or voxel-wise diffusion density [12]. These studies are motivated by the fact that brain characteristics are largely determined by genetic factors that are often unique to individuals [13]. Moreover, various neurological disorders like Parkinson [14] and autism [15] have been linked to specific brain abnormalities that are difficult to describe at the population level. With the rapid improvements in MRI acquisition hardware and analysis tools, and thanks to large brain-related initiatives like the Human Connectome Project (HCP) [16] and UK Biobank [17], researchers are better poised to study individual subjects in addition to groups [18, 19], thus taking a step towards precision medicine [20] and precision psychiatry [21].

The importance of brain fingerprinting is evident from the recent surge in studies on this topic. For example, Yeh et al. [12] built a local connectome fingerprint using dMRI data, and applied this fingerprint to the analysis of genetically-related subjects. Kumar et al. [11] proposed another dMRI-based fingerprint called *Fiberprint*, which characterizes white matter fiber geometry. Finn et al. [9] considered the correlation between time courses of atlas-defined nodes to generate a functional connectivity profile, and used this profile to identify individuals across scan sessions, both for task and rest conditions. Liu et

al. [10] use dynamic brain connectivity patterns for Identifying individuals and  
25 predicting higher cognitive functions. Moreover, Miranda et al. [22] proposed a  
linear model to describe the activity of brain regions in resting-state fMRI as a  
weighted sum of its functional neighboring regions. Their functional fingerprint,  
derived from the model’s coefficients, has the ability to predict individuals using  
a limited number of non-sequential frames.

30 Various morphometry-based fingerprints have also been proposed for struc-  
tural MRI modalities like T1- or T2-weighted images. For example, Wachinger  
et al. [8] quantify the shape of cortical and subcortical structures via the spec-  
trum of the Laplace-Beltrami operator. The resulting representation, called  
*Brainprint*, is used for subject identification and analyzing potential genetic  
35 influences on brain morphology. Toews et al. [23] represent images as a col-  
lection of localized image descriptors, and apply scale-space theory to analyze  
their distribution at the characteristic scale of underlying anatomical structures.  
This representation is employed to identify distinctive anatomical patterns of  
genetically-related individuals or subjects with a known brain disease.

40 So far, fingerprinting studies in the literature have focused on a single modal-  
ity. However, each modality captures unique properties of the brain and com-  
bining multiple modalities can provide a richer, more discriminative information  
[24, 25]. Hence, the fusion of multiple modalities has been shown superior than  
single-modality data to identify diseases like schizophrenia, bipolar disorder,  
45 major depressive disorder and obsessive-compulsive disorder [24]. Multi-modal  
neuroimaging biomarkers have also been proposed to predict cognitive deficits  
in schizophrenia [26]. Similarly, the combination of multiple MRI modalities has  
led to the improved segmentation of isointense infant brain images [27]. Also,  
multimodal imaging data can be used to predict the brain-age of subjects and  
50 detect cognitive impairments [28]. Detailed reviews on multi-modal methods  
and investigations for psychopathology can be found in [24, 29, 30].

Due to the challenges of combining multiple modalities in a single frame-  
work [24, 30], defining a multi-modal brain fingerprinting remains to this day  
an elusive task. Morphometry-based approaches, such as Brainprint [8], could



55 potentially be extended to other modalities like dMRI. However, this requires solving non-trivial problems such as the cross-modality alignment of images with different resolutions, the segmentation and correspondence of neuroanatomical structures, etc. Computational efficiency is another important issue when dealing with large-scale, multi-subject and multi-modal datasets like the Human  
60 Connectome Project (HCP) [16] and UK Biobank [17]. In this work, we propose a multi-modal brain fingerprinting that overcomes these challenges using manifold approximation. The key idea is to represent each image as a bag of local features, and derive a subject-level proximity graph using feature correspondences over the entire set of images [23]. This subject proximity graph  
65 provides an approximation of the image appearance subspace (i.e., the manifold), which can be used to obtain a compact fingerprint representation.

Manifold learning has been extensively studied in machine learning [31] with many approaches like Isomap [32], Locally Linear Embedding (LLE) [33], Spectral Embedding [34] and Multi-dimensional Scaling (MDS) [35] proposed over  
70 the years. As detailed in [36], such techniques have also been used for various problems of medical imaging like registration, segmentation and classification. For example, in [37], Gerber et al. use manifold learning to perform a population analysis of brain images. Similarly, a deep learning based approach is explored in [38] to learn the manifold of brain MRIs. A key factor in such methods is  
75 image representation. For instance, the manifold could be approximated using the Euclidean distance between image pairs, however this would not be robust to translation, rotation or scaling, and would suffer from high computational costs. Representations based on local features, often referred to as bag of features (BoF) representations, have been shown to automatically identify known  
80 structural differences between healthy controls and Alzheimer’s subjects in a fully data driven fashion [23]. The ability to identify anatomical patterns that may only be present in subsets of subjects and without the stringent requirement of one-to-one correspondence between subjects, the BoF approach is well suited to capture disease or anatomical variability and to carry out large scale  
85 analysis.

BoF representations play a key role in various problems of computer vision, for example, object recognition [39, 40] and image retrieval [41]. This technique can be seen as a way of compressing full images using a few discriminative local features, which can then be matched in sublinear time, for example, using randomized KD-search trees [42]. With respect to brain imaging, BoFs have been used for morphometry analysis [23], modeling the development of infant brains [43], and image alignment [44]. While they have shown great potential for computer vision and medical imaging, BoFs have, thus far, not been explored for brain fingerprinting. This is mainly due to the fact that BoF representations can have a large and variable size, which makes comparing two fingerprints non-trivial. In this work, this problem is circumvented by embedding the BoF representations in a low-dimensional manifold.

The key contributions of this work are:

1. **Novel framework:** A novel and data driven approach based on Bag of Features (BoFs) and manifold approximation that combines the information from multiple imaging modalities into a single compact fingerprint;
2. **Large scale analysis:** Comprehensive analysis using pre-processed data from Human Connectome Project for T1/T2-weighted MRI, diffusion MRI (DTI and GQI measures), and resting state fMRI (netmats).
3. **Modality comparisons:** Quantifying contribution of individual modalities for fingerprint and validation of hypothesis that each modality provides certain complimentary information, using a common task of twin/sibling identification.

In addition, the current study presents a comprehensive analysis of the proposed fingerprint using a large-scale dataset from the Human Connectome Project (HCP), where numerous properties/factors are investigated, including the impact of various fingerprint parameters (e.g., manifold dimensionality and proximity graph connectivity), the contribution of individual modalities and/or their combination to the fingerprint’s discriminativeness, the fingerprint’s robustness to image alignment and scan resolution, and the reproducibility of

results using re-test or corrupted scans.

Using the genetically verified Zygosity labels from the HCP twin dataset, we analyze the proposed fingerprint’s ability to identify genetically-related subjects (i.e., monozygotic twins, dizygotic twins and non-twin siblings) from a large cohort, and show our multi-modal fingerprint to outperform single-modality approaches or fingerprints based on raw images. In an analysis of local feature correspondences, we identify for each modality the neuroanatomical regions having the most significant differences across groups of genetically-related subjects, as well as between males and females. Lateral asymmetry is also considered in this analysis by comparing the distribution of features correspondences across hemispheres. To our knowledge, this study constitutes the most in-depth investigation of a multi-modal brain fingerprint.

This work extends our preliminary work [45, 46] in terms of 1) set of multiple modalities and recent HCP data release 2) manifold approximation and compact fingerprint generation 3) the rank retrieval analysis using Mean Average Precision and impact of various factors. Taking inspiration from computer vision challenges, the proposed rank retrieval evaluation based on the task of twin/sibling identification and using Mean Average Precision (MAP) can be used for a standardized comparison of future brain fingerprints. Also, twin data from Human Connectome Project (Q3 release) has been analyzed in various studies including an extensive analysis of heritability of multi-modal functional connectivity in [47]. Our work, compliments these studies as well as previous fingerprint studies in terms of the number of modalities used in a single analysis: structural MRI, diffusion MRI, resting state functional connectivity profiles, and their combinations. The proposed framework is computationally efficient and validates (quantitatively) the hypothesis that individual modalities provide certain complimentary information. In addition, while the genetic basis of brain structure and function is largely unknown [48], the neuro-anatomical traits are largely heritable [49, 50, 13] and form the basis for the identification of twins. The scope of the present study is limited to multi-modal brain fingerprinting, and a heritability analysis on the lines of Ge et al. [49] will be assessed in next

step.

The rest of this paper is organized as follows. We first present the proposed multi-modal brain fingerprinting framework, detailing the data pre-processing  
 150 steps, the BoF representation and proximity graph computation, and the manifold embedding of this graph. In Section 3, we then conduct an extensive experimental validation using the T1-weighted, T2-weighted, diffusion-weighted MRI, and resting state fMRI data of 945 subjects from the HCP dataset. Finally,  
 155 we conclude with a summary of our contributions and a discussion of possible extensions.

## 2. Materials and methods

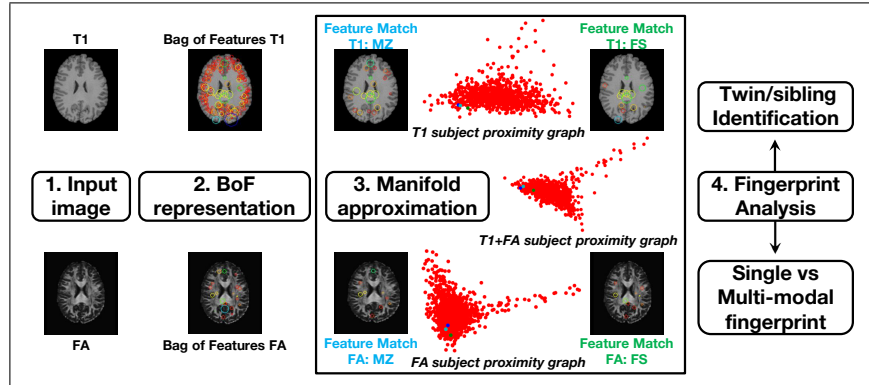


Figure 1: Pipeline of the proposed framework and analysis. For a given input image, a BoF representation is first obtained by extracting local features. This representation is then converted to a fingerprint by matching features across the entire set of images, and embedding the resulting proximity graph into the manifold. The manifold approximation block shows the 2D embedding coordinates (i.e., fingerprint) of HCP subjects (red dots) obtained with T1w (top), FA (bottom) and combined T1w+FA (middle) images. The fingerprints of a specific subject (blue dot), his/her monozygotic twin (MZ, cyan dot) and full sibling (FS, green dot) are highlighted in each plot. The pairwise feature matches of these two sibling pairs, for T1w and FA images, are shown in the corner images of the block.

Figure 1 summarizes the pipeline of the proposed multi-modal brain fingerprint framework, which is comprised of four steps. In the first step, we start

with pre-processed structural MRI (sMRI) and diffusion MRI (dMRI) data of  
160 945 subjects from the Human Connectome Project [51, 16]. Diffusion Tensor  
Imaging (DTI) and Generalized Q-Ball Imaging (GQI) based Diffusivity mea-  
sures are obtained from dMRI scans, including: fractional anisotropy (FA), axial  
diffusivity (AD), mean diffusivity (MD), radial diffusivity (RD) and generalized  
fractional anisotropy (GFA). The second step then extracts local features from  
165 the images of each subject, and encodes subjects as a bag of features (BoF).  
In the third step, the multi-modal fingerprints of subjects are computed using  
manifold approximation. Towards this goal, a subject-level proximity graph is  
first constructed by matching the features of each modality across images, and  
identifying pairs of subjects with a high number of correspondences. Finger-  
170 prints are then obtained by embedding this graph in a low-dimensional sub-  
space. In the last step, we perform various analyses on the subject fingerprints.  
The informativeness of individual modalities and their link to genetic proxim-  
ity are first measured in a twin/sibling identification analysis. This analysis  
is then extended to multi-modal fingerprints, showing the combined effect and  
175 complementarity of multiple modalities. Resting state fMRI network matrices  
and FreeSurfer derived measures of volume, thickness, and area, provided by  
HCP, are also used for fingerprint analysis. Finally, the distribution of feature  
correspondences between pairs of subjects are used to identify regions showing  
significant differences across different sibling types. The following subsections  
180 describe each of these steps in greater detail.

### *2.1. Data and pre-processing*

We used the pre-processed structural and diffusion MRI data, and resting  
state fMRI network matrices of 945 subjects, the retest data of 42 subjects, from  
the HCP1200 release of the Human Connectome Project [16]. The HCP1200  
185 release provides genetically verified labels for twins and siblings, and is a rich  
resource to analyze the importance of environmental and genetic influences for  
traits, phenotypes, and disorders [52, 51]. Table 1 provides the demographic  
details of the subjects used in this study.

Data were acquired on a Siemens Skyra 3T scanner [53] and pre-processed  
190 as described in [54]. The structural acquisitions include high resolution T1-  
weighted (T1w) and T2-weighted (T2w) images (0.7 mm isotropic, FOV = 224  
mm, matrix = 320, 256 sagittal slices in a single slab), the diffusion acquisition  
used following parameters: sequence = Spin-echo EPI; repetition time (TR)  
= 5520 ms; echo time (TE) = 89.5 ms; resolution =  $1.25 \times 1.25 \times 1.25$  mm<sup>3</sup>  
195 voxels, and the resting-state fMRI acquisition involved four 15min runs at 2  
mm isotropic resolution and a repetition time of 0.72s (4800vol per subject).  
Further details can be obtained from the HCP1200 data release manual<sup>2</sup>. We  
used the `hcp2blocks.m` script (described in the HCP1200 release) to generate  
a FamilyID based matrix, only considering subjects having dMRI, sMRI, and  
200 rfMRI netmats data, and for which the `HasGT` field is true. Using this selection  
criterion, we obtained a total of 238 monozygotic (MZ) subjects, 126 dizygotic  
(DZ) subjects, and 581 non-twin subjects. The sibship size ranged between 1  
and 6. In a next step, using the mother ID, father ID, family ID and family  
type information from the output of `hcp2blocks.m` script, we obtained 119  
205 monozygotic twin pairs, 63 dizygotic twin pairs, 546 full-sibling (FS) pairs,  
39 maternal half sibling (MHS) pairs, and 5 paternal half sibling (PHS) pairs.  
These pairs are used for twin/sibling identification task in the following sections.

For structural MRI we considered T1-weighted (0.7 mm) and T2-weighted  
(0.7 mm), with and without skull. The images are in native space and skull  
210 stripped, unless explicitly specified. In the case of dMRI data, signal recon-  
struction was performed with the freely available DSI Studio toolbox [55] using  
the Diffusion Tensor Imaging (DTI) and Generalized Q-Ball Imaging (GQI)  
reconstruction options. Four widely used DTI based measures were extracted  
to characterize white matter micro-structure: fractional anisotropy (FA), axial  
215 diffusivity (AD), mean diffusivity (MD) and radial diffusivity (RD). The inter-  
pretation of these measures are discussed in [56]. In addition, to utilize the  
multi-shell information and high angular resolution of the HCP data, General-

---

<sup>2</sup><https://www.humanconnectome.org/documentation/S1200/>

Table 1: Demographics. We considered the HCP1200 release subjects with structural MRI, diffusion MRI, and resting state fMRI netmats data, and for which the HasGT field is true (genetically verified data). The family structure and links are obtained from the output of hcp2blocks.m script listed in data release manual. The sibship sizes are between 1 and 6.

Type	Total	Gender		Age	Handedness	
		F	M	Range (median)	L	R
All	945	501	444	22-36 (29)	84	861
MZ	238	138	100	22-36 (30)	19	219
DZ	126	70	56	22-35 (29)	13	113
NotTwin	581	293	288	22-36 (28)	52	529

ized Q-Ball Imaging (GQI) [55] based measures including generalized fractional anisotropy (GFA) and Quantitative Anisotropy (QA) were also obtained. For  
220 resting state fMRI, we used the connectivity matrices (netmats), provided by the HCP 1200 release, derived using the FSLNets toolbox, either via full correlation or the partial correlation [57], the latter being calculated by inverting the covariance matrix. For analyzing the impact of alignment, we also used the MNI space aligned data for T1-weighted (0.7 mm) and T2-weighted (0.7 mm)  
225 provided by the HCP 1200 release. In addition, to combine structural modalities with dMRI, and to analyze impact of scan resolution, we re-sampled T1- and T2-weighted images to a 1.25 mm resolution, using the linear registration (FLIRT) tool of FSL [58]. Our analysis also utilized FreeSurfer derived measures of sub-cortical volumes, cortical thickness and area, as well as T1w/T2w  
230 MRI ratio images (0.7 mm, myelin content information).

## 2.2. Multi-modal brain fingerprint

Generating brain fingerprints of subjects, based on their multi-modal data, involves multiple steps: extracting local descriptors in images to build a bag of features (BoF) representation of subjects, building a subject proximity graph  
235 by comparing their BoF representations, and embedding this graph in a low-dimensional manifold. Additionally, once the manifold has been constructed, an

out-of-sample extension strategy is required to compute the fingerprint of new subjects.

### 2.2.1. Bag of feature (BoF) representation of subjects

240 In the first step, a set of local descriptors [40] is obtained from each available image (3D scan). Various local feature extraction and representation approaches [59] can be used, for example, Scale Invariant Feature Transform (SIFT) [39] or Speeded UP Robust Features (SURF) [60]. In this work, we use 3D SIFT descriptors as they have been well studied for neuro-image analysis [23, 44, 61] 245 and can be computed efficiently.

3D keypoints are located in the scans of each subject by finding the local extrema (i.e., maxima or minima) of the difference of Gaussians (DoG) occurring at multiple scales. Keypoints with a low contrast or corresponding to edge response are discarded, and remaining ones are encoded into a feature vector 250 (i.e., the descriptor) using the histogram of oriented gradients (HOG) within a small neighborhood. Note that these descriptors are robust to changes in illumination, scale and rotation, and are thus efficient for comparing images acquired using different scanners or imaging parameters. Each subject is then represented as an orderless bag of features (BoF), containing all the descriptors 255 found in this subject’s scans. This representation provides a simple, robust and extensible way of incorporating data from multiple modalities.

### 2.2.2. Subject proximity graph

Because the BoFs of two subjects may contain different numbers of descriptors, they cannot be directly compared. To circumvent this problem, we 260 construct an intrinsic manifold of subject appearance using a feature-to-feature nearest-neighbor (NN) graph. In this graph, each descriptor is represented by a node and is connected to its  $K$  most similar descriptors based on Euclidean distance. This feature-to-feature graph is then converted to a subject-to-subject (i.e., subject proximity) graph by considering, for each pair of subjects, the 265 number descriptors in their BoF that are linked in the feature-to-feature graph.



Let  $\mathcal{B}_i^m$  and  $\mathcal{B}_j^m$  be the BoFs (i.e., set of descriptors) of subjects  $i$  and  $j$  for modality  $m \in \mathcal{M}$ , where  $\mathcal{M}$  is the set of available modalities. The similarity between these subjects is evaluated as

$$s_{ij} = \frac{\sum_{m \in \mathcal{M}} |\mathcal{B}_i^m \cap \mathcal{B}_j^m|}{\sum_{m \in \mathcal{M}} |\mathcal{B}_i^m \cup \mathcal{B}_j^m|} = \frac{\sum_{m \in \mathcal{M}} |\mathcal{B}_i^m \cap \mathcal{B}_j^m|}{\sum_{m \in \mathcal{M}} (|\mathcal{B}_i^m| + |\mathcal{B}_j^m| - |\mathcal{B}_i^m \cap \mathcal{B}_j^m|)}, \quad (1)$$

where  $|\mathcal{B}_i^m \cap \mathcal{B}_j^m|$  is the number of edges in the feature-to-feature graph between nodes in  $\mathcal{B}_i^m$  and those in  $\mathcal{B}_j^m$ . When using a single modality, this measure corresponds to the well-known Jaccard similarity. Here, we extend it to a multi-modal setting by comparing the descriptors of each modality separately. We  
270 note that the Jaccard distance, defined as one minus the Jaccard similarity, is a *metric* and thus well-suited for constructing the manifold.

When defining the feature-to-feature graph,  $K$  determines the number of nearest-neighbor connections for each descriptor. In manifold learning approaches, this parameter controls the locality of the manifold approximation at  
275 each point [31]. Its value should be large enough to capture the manifold’s local structure, but also restricted so that distances to nearest-neighbors are close to the geodesic. In our experiments, we tested  $K \in \{10, 20, \dots, 50\}$  and found similar results for these values. In what follows, we report results obtained with  $K = 20$ .

### 280 2.2.3. Manifold embedding

A manifold embedding technique is used to obtain compact brain fingerprints from the subject proximity graph. While various approaches could be employed for this task, for instance Isomap [32], locally linear embedding (LLE) [33] and multi-dimensional scaling (MDS) [35], we performed the embedding using Lapla-  
285 cian eigenmaps [34]. This technique, which is connected to the well-known Laplace-Beltrami operator, has the advantage of being efficient and allowing out-of-sample extensions.

In Laplacian eigenmaps, each subject  $i$  is mapped to a coordinate vector  $\mathbf{x}_i \in \mathbb{R}^k$  of the manifold, whose dimension  $k$  is a user parameter. The embedding of subjects in the manifold is made such that two subjects  $i$  and  $j$  with a high

similarity  $s_{ij}$  will be close to one another. Let  $\mathbf{S} \in \mathbb{R}^{n \times n}$  be the adjacency matrix of the subject proximity graph, as defined in Eq (1), and denote as  $\mathbf{L} = \mathbf{D} - \mathbf{S}$  the Laplacian of  $\mathbf{S}$ , where  $\mathbf{D}$  is a diagonal matrix containing the row sums of  $\mathbf{S}$ . The embedding is accomplished by solving the following problem:

$$\arg \min_{\mathbf{X}} \sum_{i=1}^n \sum_{j=1}^n s_{ij} \|\mathbf{x}_i - \mathbf{x}_j\|_2^2 = \text{tr}(\mathbf{X}^\top \mathbf{L} \mathbf{X}), \quad \text{s.t. } \mathbf{X}^\top \mathbf{D} \mathbf{X} = \mathbf{I}. \quad (2)$$

The constraint on  $\mathbf{X}$  removes arbitrary scaling factor in the embedding. As described in [34], the solution to this problem is given by the leading  $k$  eigenvectors of the normalized adjacency matrix  $\bar{\mathbf{S}} = \mathbf{D}^{-\frac{1}{2}} \mathbf{S} \mathbf{D}^{-\frac{1}{2}}$ , starting from the second one<sup>3</sup>. Once computed, the rows of matrix  $\mathbf{X}$  correspond to the  $n$  subject fingerprints of size  $k$ .

#### 2.2.4. Out-of-sample extension

The manifold embedding technique described above computes the fingerprint of all subjects at once. If new subjects are added, this process must be repeated over again, which is inefficient and changes the fingerprint of previous subjects. To alleviate these problems, we use an out-of-sample extension of Laplacian eigenmaps, based on the Nystrom method [62, 63].

Suppose we want to compute the manifold embedding of  $m$  new subjects. The first step is to update the nearest-neighbor feature graph with the local descriptors of these new subjects, leaving unchanged the nearest-neighbors of the  $n$  base subjects. We then evaluate the pairwise similarities between new subjects and the base ones. Let  $\mathbf{P} \in \mathbb{R}^{n \times m}$  be the matrix containing these similarities, the adjacency matrix of the extended subject proximity graph  $\mathbf{S}_{\text{ext}} \in \mathbb{R}^{(n+m) \times (n+m)}$  is given by

$$\mathbf{S}_{\text{ext}} = \begin{bmatrix} \mathbf{S} & \mathbf{P} \\ \mathbf{P}^\top & \mathbf{Q} \end{bmatrix}. \quad (3)$$

Using the formula in [34], the matrix  $\mathbf{Q}$  of similarities between new subjects can be approximated as  $\mathbf{P}^\top \mathbf{S}^{-1} \mathbf{P}$ .

---

<sup>3</sup>The first eigenvector contains constant values.

To normalize  $\mathbf{S}_{\text{ext}}$ , we compute the vector of row sums

$$\mathbf{d}_{\text{ext}} = \begin{bmatrix} \mathbf{s}_r + \mathbf{p}_r \\ \mathbf{p}_c + \mathbf{P}^\top \mathbf{S}^{-1} \mathbf{p}_r \end{bmatrix}, \quad (4)$$

where  $\mathbf{s}_r, \mathbf{p}_r \in \mathbb{R}^n$  contain the row sums of  $\mathbf{S}$  and  $\mathbf{P}$ , respectively, and  $\mathbf{p}_c \in \mathbb{R}^m$  contains the column sum of  $\mathbf{P}$ . In the case where  $m$  is small compared to  $n$ , we have that  $\mathbf{s}_r \approx \mathbf{s}_r + \mathbf{p}_r$ , and thus  $\mathbf{d}_{\text{ext}}$  can be approximated as

$$\mathbf{d}_{\text{ext}} \approx \begin{bmatrix} \mathbf{s}_r \\ \mathbf{p}_c + \mathbf{P}^\top \mathbf{S}^{-1} \mathbf{p}_r \end{bmatrix}. \quad (5)$$

This strategy, used in [64] for white matter fiber segmentation, allows preserving the previous embedding of base subjects. Let  $\mathbf{D}_{\text{ext}}$  be the diagonal matrix with entries corresponding to  $\mathbf{d}_{\text{ext}}$ , the normalized adjacency matrix of the extended subject graph is calculated as  $\bar{\mathbf{S}}_{\text{ext}} = \mathbf{D}_{\text{ext}}^{-\frac{1}{2}} \mathbf{S}_{\text{ext}} \mathbf{D}_{\text{ext}}^{-\frac{1}{2}}$ . The extended embedding is then obtained following Nystrom’s method as

$$\mathbf{X}_{\text{ext}} = \begin{bmatrix} \mathbf{U} \\ \bar{\mathbf{P}}^\top \mathbf{U} \Lambda^{-1} \end{bmatrix}, \quad (6)$$

where  $\mathbf{U} \Lambda \mathbf{U}^\top$  is the eigendecomposition of  $\bar{\mathbf{S}}$ , and  $\bar{\mathbf{P}}$  is the normalized submatrix in  $\bar{\mathbf{S}}_{\text{ext}}$  corresponding to  $\mathbf{P}$ . Hence, the embedding of base subjects is the same as in Section 2.2.3, and new subjects are embedded as  $\bar{\mathbf{P}}^\top \mathbf{U} \Lambda^{-1}$ . Once more, a fingerprint of size  $k$  is obtained by considering only the  $k$  leading eigenvectors in matrix  $\mathbf{U}$ , ignoring the constant eigenvector.

### 2.3. Computational efficiency

Computational and memory requirements are key factors when performing large scale analyses. In this section, we evaluate these requirements for the main steps of the proposed framework. To highlight the efficiency of encoding images with local descriptors, we also compare our framework to a simple fingerprint using full images as features. Other aspects like scan resolution and image alignment requirements are discussed in Section 3. All experiments were performed on a 3.6 GHz processor with 32 GB RAM.

For the BoF representation of images, we extracted 3D SIFT features using a publicly available tool<sup>4</sup>. Computing these features took about 3 seconds per image, and approximately 60 minutes for all 945 images, when processed sequentially. This runtime could however be reduced significantly by processing images in parallel. The feature matching routine [42], for generating the subject proximity graph from the BoF representations of all images, required around 5 minutes to complete. In comparison, calculating the sum of squared distances (SSD) between full images took 1.7 seconds on average for a single pair, and 760,000 seconds for all  $(945 \times 944)/2 = 446,040$  pairs (with parallel computations). In terms of memory, each BoF file is approximately 400 KB in size, compared to 84 MB on average for a NIfTI volume file. In summary, the proposed framework is highly efficient in terms of computational and memory requirements compared to a baseline fingerprint using full images. Moreover, since computing the subject proximity graph has a complexity in  $O(N \log N)$  where  $N$  is the number of images, and because extending the manifold embedding can be done efficiently using the Nystrom method, our framework is scalable to large datasets.

#### 2.4. Evaluation measures

To measure the link between fingerprint similarity and genetic proximity, we performed a rank retrieval analysis using the sibling information provided in the HCP dataset. In this analysis, we try to identify the twins/siblings of a given subject by comparing its fingerprint with that of all other subjects in the group. Another goal of this analysis is to provide a common platform for the quantitative comparison of individual modalities and their combination. Two standard performance metrics for rank retrieval are used to evaluate the fingerprints: mean recall@k and mean average precision (MAP) [65].

Given a subject  $i$ , we rank all other subjects by the similarity (i.e., inverse of Euclidean distance) of their fingerprint to that of subject  $i$ . Denote as  $\mathcal{T}_i$

---

<sup>4</sup><http://www.matthewtoews.com/>

the set of target siblings/twins of subject  $i$ . For instance, if the target group is non-twin siblings (NT), then  $\mathcal{T}_i$  contains the siblings of subject  $i$  that are not his/her twin. Moreover, let  $\mathcal{S}_i^k$  be the set containing the  $k$  subjects with fingerprints most similar to that of  $i$  (i.e., the  $k$  nearest neighbors of  $i$ ). For a given value of  $k$ , we evaluate the retrieval performance using the measures of recall@ $k$  and precision@ $k$ :

$$(\text{recall@}k)_i = \frac{|\mathcal{T}_i \cap \mathcal{S}_i^k|}{|\mathcal{T}_i|}, \quad (\text{precision@}k)_i = \frac{|\mathcal{T}_i \cap \mathcal{S}_i^k|}{k}. \quad (7)$$

340 When analyzing the rank performance for a particular sibling type (i.e., monozygotic twin, dizygotic twin or non-twin sibling), we average values over the set of subjects which have at least one sibling of this type, i.e. the set  $\{i, \text{ s.t. } |\mathcal{T}_i| > 0\}$ .

We also evaluate performance with the average precision, which extends the above metrics by considering the rank of nearest neighbors:

$$\text{AveP}_i = \frac{1}{|\mathcal{T}_i|} \sum_{k=1}^n (\text{precision@}k)_i \times \text{rel}_i(k), \quad (8)$$

where  $\text{rel}_i(k)$  is an indicator function with value equal to 1 if the  $k$ -th nearest neighbor of  $i$  is relevant (i.e., is in  $\mathcal{T}_i$ ), and zero otherwise. The MAP is obtained  
345 by averaging AveP values over all subjects having at least one sibling of the target type.

Finally, we use the d-prime sensitivity index [66] to obtain a quantitative measure of separability between the distribution of fingerprint distances corresponding to different sibling types. Let  $\mu_1, \mu_2$  and  $\sigma_1, \sigma_2$  be the means and standard deviations of compared distance distributions (e.g., distance between monozygotic twins versus between dizygotic twins). The d-prime index is computed as

$$\text{d-prime} = \frac{\mu_1 - \mu_2}{\sqrt{\frac{1}{2}(\sigma_1^2 + \sigma_2^2)}}. \quad (9)$$

In our experiments, we report absolute values of d-prime, higher values indicating better separability.

### 3. Experiments and results

350 A comprehensive set of experiments was conducted to analyze the proposed fingerprint and evaluate its usefulness in various applications. In the first experiment, we analyze the manifold embedding of subjects and measure the impact of manifold dimensionality on the fingerprint’s ability to capture genetic proximity. We then perform a detailed rank retrieval analysis, in which fingerprints  
355 obtained from a single modality or combinations of multiple modalities are used to identify three types of genetically-related subject: monozygotic twins (MZ), dizygotic twins (DZ) and full siblings (FS). The driving hypothesis of this experiment is that individual modalities capture distinct properties of brain tissues, which can be effectively encoded in the fingerprint, and that combining different modalities can help describe the uniqueness of individual brains. Another  
360 goal of this experiment is to measure the relationship between the similarity of fingerprints, for different modality combinations, and genetic proximity.

In another experiment, we assess the impact of following factors on the proposed fingerprint: image alignment, scan resolution, inclusion of skull, and  
365 subject age. This is followed by a reproducibility analysis, performed with the retest scans of 42 subjects, and a comparison with a baseline fingerprint using full images as features. The objective of these experiments is to demonstrate the robustness and performance of the proposed fingerprint, compared to a full image scan-based fingerprint.

370 We also present applications of the proposed framework for identifying retest scans, duplicate corrupt scans, and incorrectly-reported zygosity labels. In addition, we use the segmentation masks provided with the HCP data to identify cortical and subcortical brain regions where the distribution of feature correspondences between monozygotic twins is significantly different from dizygotic  
375 twins. In this analysis, we want to find brain regions which are more influenced by genetic promixity. Finally, we conduct a hemisphere asymmetry analysis using the feature correspondences for different types of siblings.

### 3.1. Manifold approximation analysis

To analyze the manifold approximation, we generated fingerprints by projecting the subject proximity graph onto a varying number of spectral components (i.e., leading eigenvectors of the normalized adjacency or Laplacian matrix). Fingerprints were normalized by converting each fingerprint to z-scores (centered to have mean 0 and scaled to have standard deviation 1). Figure 2 (top row) shows a representative 2D spectral embedding of subject proximity graphs obtained using T1w, FA, or both modalities (T1w+FA). As described in Section 2.2.2, modalities are combined by aggregating the feature correspondences in each modality when computing the pairwise subject similarities. In these plots, the position of each red dot corresponds to the 2D fingerprint of a subject. Additionally, in each plot, a single pair of MZ twins is highlighted using blue and cyan dots and their NT sibling highlighted using a green dot.

It can be seen that the distribution of subject embeddings in the manifold varies from T1w to FA, showing that these modalities encode different properties in the fingerprint. Differences between the distributions of FA and T1w+FA fingerprints are in part explained by the fact that spectral embeddings are defined up to a rotation or axis flipping. Moreover, we observe for all three modality combinations that genetically-related subjects are near to each other in the manifold, and that MZ twins are closer than their non-twin (full) sibling.

In Figure 2 (bottom row), we measure the impact of manifold dimensionality on the fingerprint obtained with T1w, FA or T1w+FA modalities. The left plot shows the eigenvalues (sorted by decreasing magnitude) of the subject proximity graph’s normalized adjacency matrix, which reflect the amount of connectivity information captured by their corresponding eigenvector. This plot indicates that most information is encoded in the first leading eigenvectors and, thus, that a compact fingerprint is possible.

This hypothesis is further confirmed in the middle and right plots of the same row, which evaluate for an increasing number of spectral components (i.e., fingerprint size) how the distributions of distances between MZ fingerprints and between DZ fingerprints differ. The separability between these two distribu-

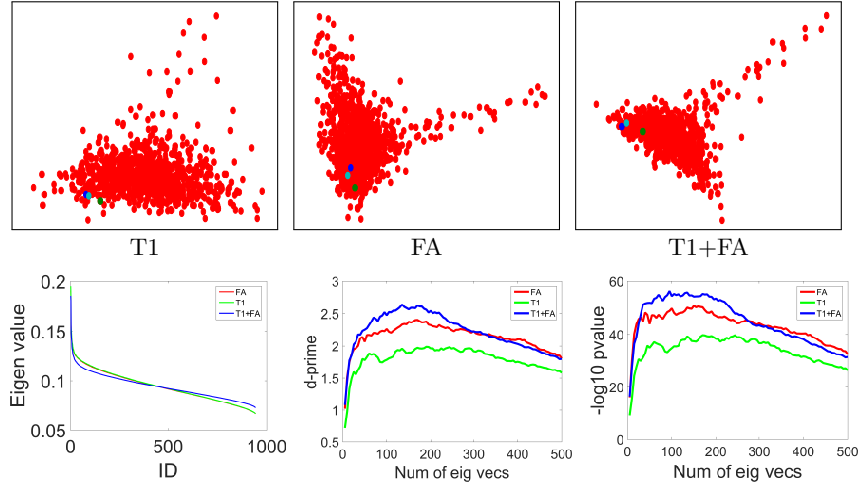


Figure 2: Compact fingerprint analysis. Top row: representative 2D spectral embedding visualization, blue and cyan dots show one pair of MZ twins and green dot shows their not twin (full) sibling; Bottom row: plots of eigenvalues (excluding the first), absolute d-prime, and  $-\log_{10}$  (p-value) (unpaired t-test) for Euclidean distances between MZ pair vs DZ pair fingerprints with increasing number of eigenvectors.

tions of fingerprint distances is measured in terms of d-prime (middle plot) and  
 410 unpaired t-test p-values (in  $-\log_{10}$  scale). In both measures, higher values cor-  
 respond to a greater separability. For all three modality combinations, a peak  
 separability is observed around 150 eigenvectors, suggesting this value to be  
 suitable for the fingerprint size. The decrease in separability for larger man-  
 ifold dimensions is due to the fact that the added eigenvectors encode small  
 415 variations of brain geometry which are not related to genetic proximity. Nev-  
 ertheless, the difference between fingerprint distances in MZ pairs and in DZ  
 pairs is significant with p-value  $< 0.01$ , for all tested manifold sizes and modality  
 combinations.

Comparing the three modality combinations, the diffusion-based fingerprint  
 420 using FA images provides a higher separability than the fingerprint generat-  
 ed from T1w, for all manifold sizes. However, the separability is increased further  
 when combining both modalities in the fingerprint, in line with our hypothesis



that multi-modal fingerprints are more discriminative than those based on a single modality. The impact of modalities on the fingerprint is analyzed in greater details.

425

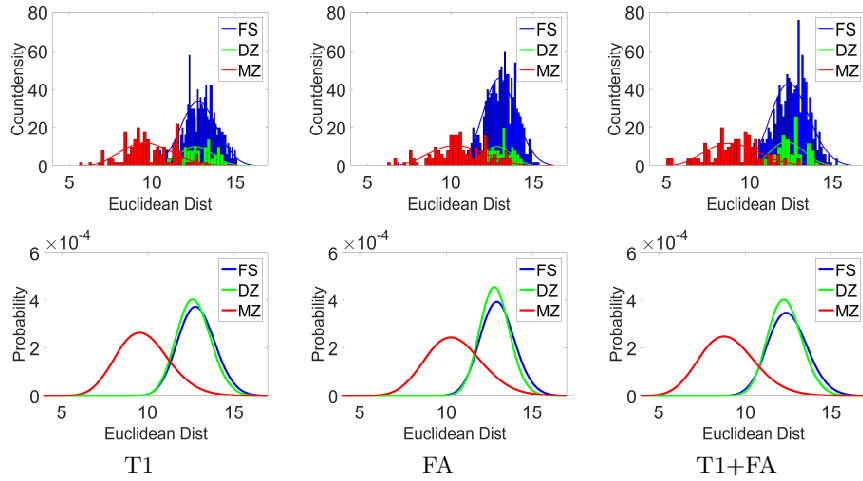


Figure 3: Compact fingerprint comparison for genetically related subjects. Count-density histograms (top row) and probability-normalized curves (bottom row; gamma histogram fitting) of Euclidean distances between twin/sibling pair fingerprints using 100 eigenvectors.

Finally, Figure 3 gives the count histograms and probability density curves (fitted) of Euclidean distances between fingerprints of different sibling types. To generate these results, and in all following experiments, we used a fingerprint of 150 features (i.e., leading eigenvectors of the normalized adjacency matrix). Each fingerprint converted to z-scores (centered to have mean 0 and scaled to have standard deviation 1). It can be seen that the fingerprints of MZ twins, which share the most genetic material, are significantly more similar than those of DZ twins or full siblings (FS). This follows the results of various twin studies [50, 13], highlighting the relationship between genetic proximity and anatomical similarity.

435

### 3.2. Identification of genetically-related subjects

In this section, we use genetically verified labels of the HCP dataset to determine whether fingerprints generated using different modality combinations can

identify genetically-related individuals within a group of subjects. For combin-  
 440 ing structural and diffusion modalities, we considered data at 1.25mm resolution.  
 For resting state fMRI, we utilize the connectivity matrices (netmats) as func-  
 tional connectivity fingerprints, and obtain the subject proximity graph (man-  
 ifold approximation) by computing pairwise Pearson correlation. The idea is  
 to closely follow the functional connectivity fingerprint and similarity computa-  
 445 tion described in Finn et al. [9] (the parcellation and dataset sizes are different).  
 The multi-modal combinations involving rfMRI are obtained by linear combina-  
 tion of rfMRI subject proximity graph with other modality/combination based  
 subject proximity graph. The weights for linear combination were determined  
 by grid search, and optimal values of evaluation measures are reported. For  
 450 FreeSurfer based measures, we used the unrestricted csv file, considering vol-  
 ume of sub-cortical structures, thickness and area measures for cortical regions.  
 Each of the measures were converted to zscore across subjects, and then used  
 as a fingerprint (volume measures are first divided by FS-IntraCranial-Vol).  
 Subject proximity graph is approximated by computing the pairwise Pearson  
 455 correlation. We refer the reader to Section 2.4 for details on the evaluation  
 protocol and measures.

Table 2 <sup>5</sup> reports the mean average precision (MAP) values obtained in a  
 rank retrieval of three different siblings types (MZ, DZ and FS), using finger-  
 prints generated from various modality combinations. Mean recall@k results  
 460 are reported in supplement material (Figure 1 and Table 8). A rich and diverse  
 set of observations can be drawn from this table. In the next section, it is used  
 to analyze the impact of different factors on the proposed fingerprint’s ability  
 to identify genetically-related siblings, such as scan resolution, image alignment  
 and skull inclusion. While Table 2 includes FA, MD, GFA, rfMRI netmat (par-  
 tial correlation, ICA 100), and FreeSurfer Volume+Thickness+Area (V+T+A)  
 465 based mean average precision values, detailed results on dMRI based measures  
 (DTI and GQI), rfMRI netmats, and FreeSurfer measures are described in Table

---

<sup>5</sup>DTI=FA+MD+RD+AD; rfMRI netmat= partial correlation and ICA-100

Table 2: Mean average precision (MAP) table comparing different modalities for the task of genetically related subject identification.

Experiment	Modality	Mean Avg Prec		
		MZ	DZ	FS
sMRI	T1w	0.886	0.160	0.128
	T2w	0.908	0.212	0.111
dMRI	FA	0.964	0.219	0.160
	MD	0.803	0.114	0.086
	GFA	0.968	0.234	0.161
rfMRI	netmat	0.968	0.352	0.205
Modality Combination	T1w+T2w	0.970	0.283	0.183
	T1w+FA	0.977	0.279	0.210
	FA+MD	0.978	0.259	0.198
	T1w+rfMRI	0.990	0.460	0.279
	FA+rfMRI	0.996	0.472	0.301
	T1w+T2w+DTI	0.994	0.392	0.270
	T1w+T2w+FA+rfMRI	<b>0.997</b>	<b>0.546</b>	<b>0.371</b>
Skull Impact	T1w Skull	0.990	0.305	0.230
	T2w Skull	0.980	0.310	0.164
Alignment Impact	T1w MNI	0.852	0.087	0.101
	T2w MNI	0.827	0.147	0.111
Resolution Impact	T1w 1.25mm	0.831	0.136	0.121
	T2w 1.25mm	0.879	0.173	0.132
Baseline Comparison	T1w	0.649	0.079	0.052
	T2w	0.520	0.069	0.038
	FA	0.707	0.076	0.049
	V+T+A (FreeSurfer)	0.795	0.172	0.106
Retest set	T1w	0.915	0.137	0.130
	T2w	0.917	0.212	0.113
	FA	0.944	0.252	0.158
Random	Rand	0.005	0.005	0.006

3, 4, and 5 of supplement material, respectively. Moreover, results on the significance between the distributions of MAP values obtained for different modality combinations and sibling types are also reported in Table 1 of Supplement material.

Comparing modalities, we observe that rfMRI netmat yields the highest MAP among all single-modality fingerprints, with a significant margin for DZ and FS. For structure-based fingerprints, T1w and T2w provide similar performances across the different sibling types, with MZ and DZ MAP values being higher for T2w. Similarly, for diffusion based fingerprints, FA and GFA provide similar performance, while outperforming MD. Furthermore, higher MAP values are obtained when combining multiple modalities, the combination of T1w, T2w, FA, and rfMRI having the best performance for all sibling types. This applies for combinations within/across structural or diffusion modalities: T1w+T2w outperforms T1w and T2w, FA+MD performs better than FA and MD, T1w+FA outperforms T1w and FA, etc. Similarly, T1w+rfMRI outperforms T1w and rfMRI, and FA+rfMRI performs better than FA and rfMRI.

With respect to the tested sibling types, we observe a mean average precision between 80.3% and 99.7% when using the fingerprint to identify MZ twins, for all modalities and their combinations. This illustrates the high impact of genetic similarity on both structural and diffusion geometry in the brain as well as functional connectivity. Comparing MZ, DZ and FS siblings, we see higher MAP values for MZ twins compared to DZ twins or full siblings, supporting the fact that MZ twins share more genetic information [67]. In contrast, performances obtained for DZ twins and full siblings are comparable, which reflects the fact that both sibling types have the same genetic proximity. In general, the differences between DZ twins and full siblings were found to be not significant in unpaired t-test for individual modalities, with T2w being the exception (Supplement material Table 1). Also, similar observations can be drawn from mean recall@k plots and mean recall@10 values (supplement material Figure 1 and Table 8), with added information on difference in modalities with increasing  $k$ . Mean recall@ $k$ , for  $k = 1, \dots, 50$ , also known as sensitivity, evaluates the pro-

500 portion of individuals that are genetically related to a given subject, which are within the  $k$  individuals most similar to that subject (in terms of fingerprint distance). In addition, we observe higher MAP values for full sibling identification vs maternal half sibling (MHS) identification (supplement material Table 6). While MAP values for paternal half sibling identification show lot of variation, mainly due to limited sample size.

Table 3: Relative informativeness of fingerprints from two modalities. Comparison between modalities or their combination for the task of identification of a given sibling type. The reported values are **relative percentages** of MZ/DZ twin identification for two modalities, with Mod1 representing successful identifications by modality 1 only. The total number of identification tasks is 238 and 126 for MZ and DZ respectively. Note: identification of twin 1 by twin 2 and vice-versa are considered two separate tasks. The identification is considered a success if the twin is identified within the 10 nearest neighbors of a subject (among 944 subjects). (All MRI= T1w+T2w+FA+rfMRI)

Experiment	Mod1 vs Mod2	Identification % (MZ)				Identification % (DZ)			
		Both	Mod1	Mod2	None	Both	Mod1	Mod2	None
Single Modality	T1w vs T2w	93.28	2.52	<b>3.36</b>	0.84	12.70	13.49	<b>19.05</b>	54.76
	T1w vs FA	95.38	0.42	<b>3.78</b>	0.42	14.29	11.90	<b>27.78</b>	46.03
	T1w vs rfMRI	93.28	2.52	<b>4.20</b>	0.00	7.14	19.05	<b>45.24</b>	28.57
	FA vs rfMRI	96.64	<b>2.52</b>	0.84	0.00	26.19	15.87	<b>26.19</b>	31.75
	FA vs MD	88.66	<b>10.50</b>	0.84	0.00	10.32	<b>31.75</b>	12.70	45.24
Modality	T1w vs All MRI	95.80	0.00	<b>4.20</b>	0.00	21.43	4.76	<b>60.32</b>	13.49
	T2w vs All MRI	96.64	0.00	<b>3.36</b>	0.00	25.40	6.35	<b>56.35</b>	11.90
Combination	FA vs All MRI	99.16	0.00	<b>0.84</b>	0.00	39.68	2.38	<b>42.06</b>	15.87
	rfMRI vs All MRI	97.48	0.00	<b>2.52</b>	0.00	49.21	3.17	<b>32.54</b>	15.08

505 To quantify the informativeness of one modality versus another, Table 3 reports the relative percentage of MZ and DZ twins identified by both, a single, or none of the modalities<sup>6</sup>. Note, for a given twin type, each row provides relative comparison between two modalities, with sum of row being 100%. The total number of identification tasks is 238 for MZ and 126 for DZ (the identification

<sup>6</sup>Results for full siblings are reported in Table 7 of Supplement material.

510 of twin 1 by twin 2 and vice-versa are considered two separate tasks). For each task, we consider the  $k = 10$  nearest neighbors of a subject in terms of fingerprint distance. The identification is considered a success if the subject’s twin is identified within these neighbors. When comparing the relative success rates of single modalities (top half of the table), we observe that FA identifies more twins uniquely than when using T1w or MD. This is particularly noticeable for 515 DZ twins, where 27.78% of DZ pairs were identified by the FA-based fingerprint but not the T1w-based ones. Yet, structural modalities still capture brain tissue properties that are not provided by dMRI, as shown by the 11.90% of all DZ pairs that are identified using T1w but not with FA. Similar observations can be drawn when comparing rfMRI with structural and diffusion modalities. For 520 example, rfMRI identifies 45.24% of DZ pairs that are not identified using T1w within 10 neighbors, and T1w identifies 19.05%.

As with the results in Table 2, we see that combining multiple modalities leads to a more discriminative fingerprint. For example, 4.20% of MZ and 525 60.30% of DZ twins are identified by fingerprints generated from all modalities (i.e., All MRI=T1w+T2w+FA+rfMRI) but not from fingerprints based only on T1w. Reversely, all MZ twins identified with T1w are also found using T1w+T2w+FA+rfMRI, and only 4.76% of DZ twins are identified uniquely with T1w. This last result could be explained by the fact that subjects can 530 have local similarities due to factors not related to genetics.

### 3.3. *Impact of various factors*

Factors like image alignment, scan resolution, skull inclusion and subject age, can be confounds when analyzing the proposed fingerprint. In the following subsections, we measure the impact of these factors on the fingerprint’s ability to 535 find genetically-related subjects.

#### 3.3.1. *Image alignment*

Population-level analyses usually require aligning images to a common space or segmenting them into regions of interest, two steps which can be computa-

tionally expensive.

540 Table 2 (sMRI vs alignment impact rows) reports the retrieval performance obtained for fingerprints generated from T1w and T2w images in MNI space (0.7mm resolution, data provided by the HCP with affine alignment to MNI template). For all sibling types, MNI space-aligned fingerprints (denoted as MNI in the table) obtained lower MAP values than fingerprints using native space  
545 data. This observation, which is consistent across T1w/T2w modalities and all sibling types, indicates that image alignment is not required for our fingerprint. Although the difference is not significant, in general, in an unpaired t-test with p-value  $< 0.01$  (see Table 2 of Supplement material), bringing subjects to a common space may reduce the discriminativeness of the fingerprint leading to  
550 the reduction in MAP values. Note that similar results were obtained using full images as fingerprints (analyzed in the following section), with lower MAP for affine-aligned images.

### 3.3.2. Scan resolution

555 Scan resolution is another important factor in multi-modal and multi-subject analyses, for example, sMRI data usually offer higher resolutions compared to dMRI.

Table 2 (sMRI vs resolution impact rows) shows that MAP values for the MZ/DZ twin identification task decrease when going from 0.7mm to 1.25mm resolution, for both T1w- and T2w-based fingerprints. This is due in part to  
560 the reduced number of SIFT features extracted from 1.25mm resolution image, compared to 0.7mm resolution ones. However, this is not the case for FS identification tasks, where contrasting trends are observed for T1w and T2w. Moreover, differences in MAP values for the two resolutions are not significant when running an unpaired t-test with p-value  $< 0.01$ , for any sibling type (see  
565 Supplement material). These results suggest the robustness of our framework to varying scan resolutions.

### 3.3.3. Inclusion of skull

Since skull size and shape is strongly influenced by genetics, including skull information in fingerprints could increase their discriminative power. In this  
570 experiment, we measure the usefulness of skull tissues for identifying pairs of MZ, DZ and FS subjects. (Facial features are not analyzed)

Table 2 reports the performances of fingerprints based on T1w and T2w image, with or without skull stripping. For both T1w and T2w, as well as all sibling types, including the skull in images improves MAP values. These  
575 results are significant, with p-value  $< 0.01$ , in an unpaired t-test (see Table 2 of Supplement material). Hence, skull tissues provides additional feature correspondences which help identify twins and non-twin siblings. However, we should mention that skull stripping is essential to most neuroimaging analyses, and our objective here is only to measure the informativeness of skull tissues  
580 on the proposed fingerprint. An extended skull-inclusion analysis, including T1wbyT2w MRI ratio images (myelin content) and modality combinations are reported in supplement material, Table 10.

### 3.3.4. Subject age

In twin studies, the age of subjects can be a confound when comparing  
585 between different sibling types. For instance, DZ twins and FS siblings share the same amount of genetic material, yet DZ twins could be more similar due to their same age. The HCP data used in this study was acquired in the age range of 22-36, which corresponds to the plateau/saturation in brain and white matter development [52, 51]. Nevertheless, we analyze whether age differences  
590 in non-twin siblings is a contributing factor on performance.

Toward this goal, we divided FS sibling pairs in two groups based on the median age difference of 3 years, and measured the MAP in each group, for fingerprints generated from T1w, T2w, and FA. Similarly, we also evaluated the impact of absolute age on performance of MZ/DZ. In this case, we divided  
595 subjects (not subject pairs) in two groups based on the median subject age of 29 years. As shown in supplement material Table 9, no significant differences



in MAP are observed across these groups. In summary, using the HCP dataset, we found no significant impact of subject age on the proposed fingerprint.

### 3.4. Comparison to baseline fingerprint

600 We compared the performance of our fingerprint to a baseline using full images as features. In this baseline, the similarity of two fingerprints is measured as the sum of squared distances (SSD) between intensities of corresponding voxels. Table 2 gives the MAP obtained using this baseline, for T1w, T2w, and FA images in native subject space. For MZ twin identification, the baseline  
605 using FA images performs better than T1w or T2w images, which is consistent with the results of the proposed fingerprint. However, we see that our fingerprint performs consistently better than the baseline, with MAP improvements of 0.237 in T1w, 0.388 in T2w, and 0.257 in FA, for the task of identifying MZ twins. These improvements are significant in a one-sided unpaired t-test with  
610 p-value  $< 0.01$  (see Supplement material, Table 2). Note that we also tested a similar baseline created from MNI aligned images, however this led to lower MAP values.

In addition, we use Freesurfer derived measures of sub-cortical volumes, and thickness and area of cortical regions as baseline fingerprints (see Supplement material Table 5 for detailed analysis on FreeSurfer measures).  
615 Higher MAP values are obtained for MZ twin identification using our fingerprint vs Vol+Thck+Area FreeSurfer (0.886 vs 0.795, p-value  $< 0.01$ ). However, no significant difference is observed for DZ and FS identification.

In summary, while being very compact and efficient (see Section 2.3), our  
620 fingerprint based on local features is significantly more informative than a voxel-based representation and performs similar/better than FreeSurfer derived measures for identifying genetically-related subjects.

### 3.5. Results reproducibility

To test the reproducibility of the results, we re-ran the same analysis after  
625 replacing the T1w, T2w and FA images of 42 subjects with their retest data.

Table 2 gives the MAP values obtained following this process. We observe small differences in MAP, compared to fingerprints using the original data, however, these are not significant (see Supplement material Table 2).

We note that the majority of retest subjects available in the HCP data are  
630 MZ twins. Since we do not observe significant differences for identifying this type of twins, it shows that the results are reproducible. The small differences in MAP values for DZ twins and FS siblings could be attributed to slight changes in the ordering of retest subjects' nearest neighbors.

### 3.6. Applications

635 In this section, we demonstrate the usefulness of our fingerprint on three different applications: 1) the correction of erroneous zygosity labels, 2) the detection of retest and duplicate scans, 3) the visualization and analysis of local feature correspondences for different modalities, sibling types and neuroanatomical regions.

#### 640 3.6.1. Zygosity label correction

The Q3 release of the HCP dataset contained self-reported zygosity labels for twins. In the HCP 1200 release, which contains genetically verified zygosity labels, it was found that many self-reported DZ twins were actually MZ twins. In light of this problem, we first evaluate if the proposed framework can be used  
645 to identify the twins in large dataset whose self-reported zygosity differs from their true zygosity.

In earlier experiments, we found higher MAP values for MZ and that the MZ twin of subjects was within the 10 nearest neighbors of a subject (i.e., a mean recall@k of 100% was obtained for  $k \leq 10$ , supplement material Table  
650 8), regardless of the modality combination used for the fingerprint. Conversely, a lower percentage of DZ twins could be identified in these lists of nearest neighbors. Based on this idea, we find incorrectly reported MZ candidates as the DZ twins which are within the 10 nearest neighbors of a subject.

Table 4 reports the percentage of DZ-to-MZ twins (56 in total) correctly  
 655 identified by the proposed fingerprint, the baseline using full images, both or  
 none of these methods, for T1w, T2w and FA modalities. The results show  
 that our fingerprint can identify most incorrectly self-reported MZ twins, with  
 a detection rate of 92.86% for T1w, 100.00% for T2w, and 100.00% for FA. For  
 all modalities, over 32% of cases were identified uniquely by our fingerprint. In  
 660 contrast, no DZ-to-MZ twins were identified uniquely by the baseline finger-  
 print. In conclusion, the proposed fingerprint can be used effectively to detect  
 misreported zygosity labels.

Table 4: Analysis of self-reported zygosity to genetically verified zygosity detection. Relative percentage of DZ-to-MZ subject’s twin identification within 10 nearest neighbors for proposed framework vs Baseline (Full image based pairwise SSD). Total number of identification tasks is 56. Identification is considered a success if the twin is identified within the 10 nearest neighbors of a subject.

Modality	Identification %			
	Both	Proposed	Base	None
T1w	60.71	<b>32.15</b>	0.00	7.14
T2w	55.36	<b>44.64</b>	0.00	0.00
FA	64.29	<b>35.71</b>	0.00	0.00

### 3.6.2. Retest and duplicate scan identification

To analyze our fingerprint’s ability to detect repeat scans of the same sub-  
 665 jects (acquired after a time gap), we used the data of 945 subjects + 42 retest  
 subjects, and considered the task of identifying repeat scan in a rank retrieval  
 analysis.

Following the same evaluation protocol as for identifying MZ/DZ/FS sib-  
 lings, we obtained a MAP value of 1 for fingerprints generated from T1w, T2w or  
 670 FA. Thus, in all cases, the single most similar fingerprint to that of a subject cor-  
 responded to this subject’s retest data. Moreover, when considering the number  
 of local feature correspondences in the subject similarity (i.e.,  $\sum_{m \in \mathcal{M}} |\mathcal{B}_i^m \cap \mathcal{B}_j^m|$ )

in Eq (1)), we observed more correspondences for the retest data of a subject than for the subject’s MZ twin.

675 Duplicate scans in a dataset, for example resulting from noise corruption, renaming or other manual errors, can introduce bias in analyses. Therefore, we also assessed if our fingerprint could detect duplicate scans of the same subject, corrupted by noise. For this experiment, we introduced duplicate scans for 42 T1w images, to which was added random noise (uniformly distributed random  
680 numbers in the  $[-a, a]$  range, where  $a \in \{20, 60, 100, 150, 200, 400\}$ ; the mean and stdev of image intensities are respectively 720 and 185).

Running a rank retrieval analysis using duplicate scans as target, we again obtained an MAP value of 1, for all tested noise levels. As in the retest scan identification task, the number of local feature correspondences was higher with  
685 corrupted duplicates than with images of MZ twins. Compared to retest scans, the number of feature correspondences was nearly half for corrupted duplicated, suggesting that noise can reduce correspondences to some extent. Overall, the results of this experiment demonstrate that our fingerprint can preserve brain characteristics over different scans of a subject.

### 690 3.6.3. Local feature correspondence analysis

To understand the advantages and limitations of a BoF-based fingerprint compared to voxel-wise or shape-based methods, we perform an in-depth analysis of local feature correspondences between subjects. In order to compare our findings with those of related fingerprint studies like Brainprint [8], we limit  
695 our analysis to genetically-related subjects from HCP and to structural MRI modalities. Other applications of BoF representations for neuro-image analysis have been well studied in the literature [23, 44, 61].

We start with a qualitative visualization of pairwise feature correspondences between subjects of different sibling types. The distribution of correspondences  
700 in these modalities is then analyzed using the segmentation maps (WM parcellation) files provided with HCP data. Furthermore, we also report cortical and subcortical regions having significantly different match distributions across

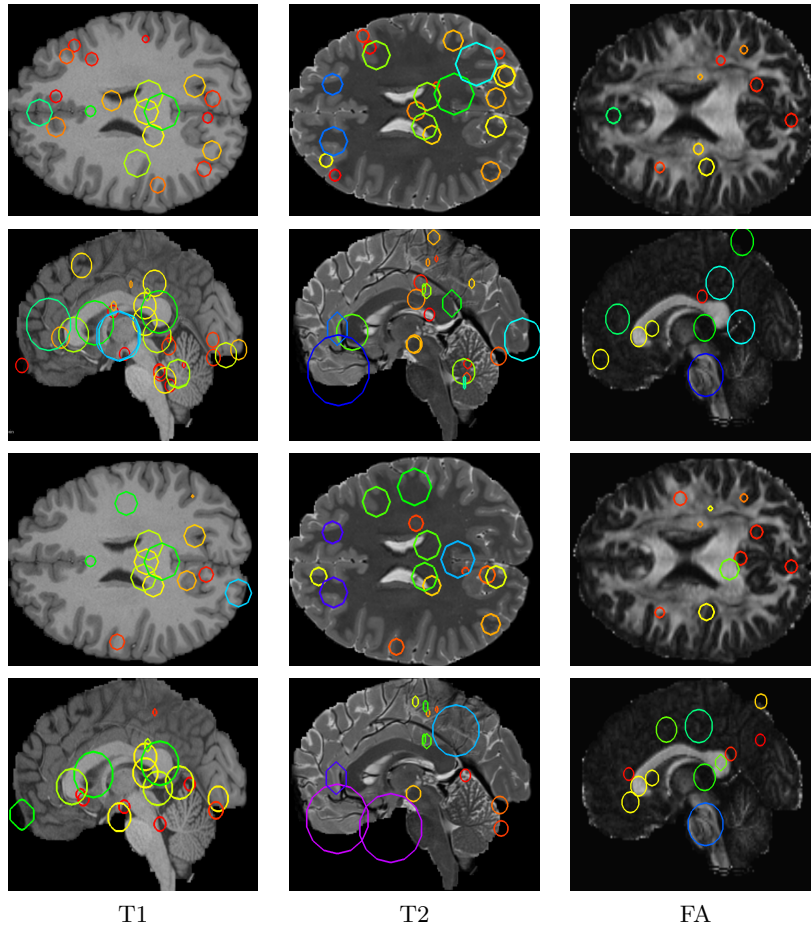


Figure 4: Example of feature correspondences for a subject and his/her MZ twin (rows 1-2), and the subject’s full sibling (FS) (rows 3-4). Scale space is represented using circle radius (for the visible slice).

sibling types, these regions having a closer relationship to genetic proximity. Finally, we perform a lateral asymmetry analysis in which the distribution of correspondences in hemispheres are compared. Since we perform pairwise matching,  
 705 correspondences in hemispheres are compared. Since we perform pairwise matching, an extended set of 1010 HCP subjects: 139 MZ pairs, 72 DZ pairs, and 1214 full sibling pairs.

### *Scale-space visualization of features correspondences*

Analyzing local feature correspondences between sibling pairs provides in-  
710 formation in terms of their location as well as scale. In 3D SIFT features, scale  
corresponds to the variance of a Gaussian blur kernel for which the correspond-  
ing voxel in the blurred image is a local extrema [40, 39]. It thus coincide, to a  
certain degree, with the size of structures in which these features are located.

Figure 4 gives a scale-space visualization of features matched between a  
715 subject and his/her MZ twin, as well as the subject’s non-twin (full) sibling, for  
T1w, T2w and FA images (See supplement material for DZ and non-twin (full)  
sibling). The scale information is represented using the circles’ radius. Note  
that circles represent the intersection of 3D spheres with the visible slice and,  
thus, non-intersecting features are hidden in this 2D visualization.

720 It can be seen that different image modalities generally result in distinct,  
complementary feature correspondences throughout the brain. In T1w and  
T2w images, features are mainly located in the frontal lobe, corpus callosum  
and cerebellum. Smaller-scale features are also visible along various cortical  
regions, as well as in subcortical structures near the basal ganglia. Moreover,  
725 images based on diffusion measures have less correspondences than in structural  
modalities. These correspondences are located mostly inside or near to white  
matter: larger-scale features in the corpus-callosum, and smaller-scale ones in  
the brain stem and along white matter bundles. The distribution of features in  
prominent brain regions is further analyzed in the next section.

730 Comparing different sibling types, we see a greater number of correspon-  
dences between MZ twins than between DZ twins or full siblings. This obser-  
vation, which is easier to visualize in T1w and T2w images, is consistent with  
other analyses on twin datasets. In terms of feature location and scale, we ob-  
serve a slightly higher number of correspondences in the frontal cortex for MZ  
735 twins, however, no obvious pattern can be drawn from one set of representative  
plots.

*Region-wise analysis of feature correspondences*

Here, we analyze the distribution of feature correspondences across atlas-defined neuroanatomical regions, measured over the entire group of subjects. For each scan, segmentation labels were obtained from the Freesurfer-processed data, using LUT table for label descriptions.

Figure 5 shows the box plot distributions of feature correspondences between pairs of MZ, DZ and full siblings, and for T1w and T2w images. Feature match counts are reported for five broad regions: non-white matter subcortex (**s-cort**), left/right cortex (**crtx-lh/rh**) and left/right white matter (**wm-lh/rh**). Note that mapping local features to a finer cortical parcellation is difficult due to the limited thickness of the cortex. Subcortical regions are further analyzed below.

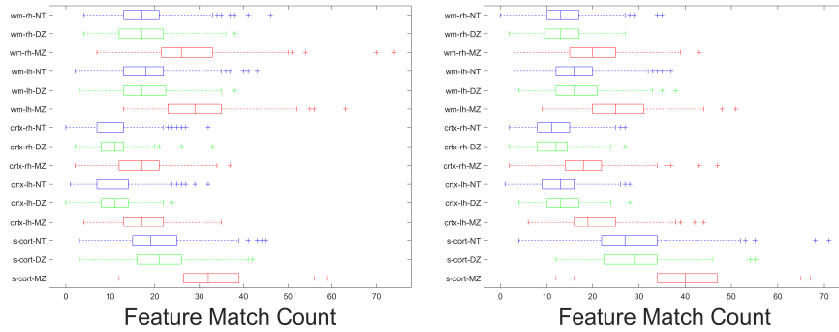


Figure 5: Box plot comparison between MZ, DZ, and FS for pairwise feature correspondence counts for T1w (left) and T2w (right) for major structures. Red, green and blue correspond to MZ, DZ, and FS respectively.

Comparing across sibling types, we observe a higher number of feature correspondences for MZ pairs across all five regions and both T1w and T2w modalities. This confirms once again that the local features employed in our fingerprint captures brain characteristics related to genetic proximity. Analyzing the region-wise distribution of feature correspondences, all five regions are well represented. Since the number of local features in a region is proportional to its size, it is not surprising that the cortex has the least correspondences. Yet, such features are also produced by intensity variations (i.e., edges), thus explaining

why many correspondences are found in the cortex. Finally, when comparing T1w and T2w modalities, we see small differences in the match counts, however these are not statistically significant.

Table 5: Significant parcellations for T1w and T2w for MZ vs DZ and MZ v FS, along with the HolmBonferroni corrected p-values ( $-\log_{10}$  scale) obtained using unpaired t-test (Feature match count). **corrected p-values  $\leq 0.05$**  are in bold.

Label	T1w		T2w	
	MZ vs DZ	MZ vs FS	MZ vs DZ	MZ vs FS
subcortical	<b>29.31</b>	<b>50.31</b>	<b>26.06</b>	<b>39.41</b>
Crtx-LH	<b>22.85</b>	<b>35.17</b>	<b>23.37</b>	<b>38.87</b>
Crtx-RH	<b>21.48</b>	<b>39.76</b>	<b>25.38</b>	<b>37.73</b>
WM-LH	<b>37.64</b>	<b>62.83</b>	<b>27.88</b>	<b>47.38</b>
WM-RH	<b>23.38</b>	<b>36.80</b>	<b>21.88</b>	<b>32.62</b>
L-Lat-Vent	<b>5.84</b>	<b>11.34</b>	<b>5.31</b>	<b>7.50</b>
R-Lat-Vent	<b>4.21</b>	<b>10.72</b>	<b>3.99</b>	<b>7.57</b>
L-VentralDC	<b>1.49</b>	<b>6.06</b>	<b>5.16</b>	<b>2.98</b>
R-VentralDC	0.45	0.60	0.00	0.01
R-Cerebellum-WM	<b>3.98</b>	<b>15.40</b>	0.00	0.57
L-Cerebellum-WM	<b>4.82</b>	<b>11.11</b>	<b>2.33</b>	<b>6.55</b>
R-Putamen	0.48	0.51	<b>2.34</b>	1.24
L-Putamen	0.87	0.35	0.06	0.30
L-Cerebellum-Crtx	<b>5.74</b>	<b>6.26</b>	<b>5.58</b>	<b>13.81</b>
L-Thalamus-Proper	<b>2.71</b>	<b>4.03</b>	0.37	0.01
4th-Ventricle	<b>1.49</b>	<b>2.24</b>	<b>1.86</b>	<b>3.91</b>
L-Hippocampus	<b>3.23</b>	<b>3.76</b>	<b>4.61</b>	<b>5.85</b>
CC-Anterior	<b>1.83</b>	0.51	0.40	0.71
R-Cerebellum-Crtx	<b>5.96</b>	<b>11.93</b>	<b>3.38</b>	<b>7.57</b>
3rd-Ventricle	0.45	0.51	0.37	0.43

To identify regions showing a strong relationship to genetic proximity, Table 5 gives the p-values ( $-\log_{10}$  scale) of an unpaired t-test comparing the mean number of correspondences between subjects of a given sibling type versus another sibling type (e.g., MZ vs DZ). Significance values are provided for the five



major regions described above, as well for 15 prominent subcortical structures matching the analysis by Wachinger et al. [8]. To account for multiple comparisons (i.e., one for each tested region), reported p-values have been corrected  
765 using the Holm-Bonferroni procedure [68]. Moreover, to account for age and size bias in this analysis, we selected FS pairs with less than 3 years age difference, and matched the number of FS pairs to MZ pairs using a simple bipartite matching based on age.

770 From Table 5, we observe significant differences between MZ twins and DZ-twins/full-siblings ( $-\log_{10}(\text{p-value}) > 2$ ), for all five major regions and for both T1w and T2w images. In subcortical structures of T1w images, cerebellum white matter and cortex (left and right), lateral ventricles (left and right), left hippocampus and left thalamus proper have a significantly different number fea-  
775 ture correspondences in MZ twins than in DZ twins or FS subjects. Comparing results obtained with T1w and T2w, the same structures are significant across both modalities, differences in significance reflecting the complimentary of these modalities.

#### *Hemisphere asymmetry analysis*

780 In our last experiment, we analyze the symmetry of feature match counts across brain hemispheres, for major structures. Toward this goal, we considered only right-handed (RH) subjects, and limited sibling pairs to subjects with same gender (i.e., a male and his brother, or a female and her sister). For non-twin siblings, we also restricted our analysis to subject pairs with less than 3 years  
785 of age difference.

Table 6 gives the results of two-sided unpaired t-tests comparing the feature match counts between cortical or white matter regions (Freesurfer LUT labels) in left- and right- hemispheres. To analyze gender effects, we also report results individually for RH male siblings and RH female siblings. Overall, we observe  
790 significant asymmetry in white matter regions (with  $-\log_{10}(\text{p-value}) > 2$ ) of MZ twins, the highest significance values obtained for T2w images. No clear pattern is found across sibling types, although hemispherical differences are generally

Table 6: Hemisphere asymmetry analysis. For a given modality and twin type we compare feature match count differences across hemisphere for major structures. (unpaired t-test + feature match count)

Modality	Type	RH Female		RH Male		RH Pairs	
		Crtx	WM	Crtx	WM	Crtx	WM
T1w	MZ	0.95	1.20	0.15	<b>2.57</b>	0.87	<b>2.73</b>
	DZ	1.05	0.78	0.35	0.99	1.12	0.06
	FS	<b>1.71</b>	0.39	0.84	0.11	<b>1.89</b>	0.09
T2w	MZ	<b>1.95</b>	<b>9.13</b>	<b>1.52</b>	<b>5.77</b>	<b>3.00</b>	<b>13.97</b>
	DZ	1.06	<b>3.60</b>	1.29	1.23	<b>1.93</b>	<b>4.06</b>
	FS	1.04	1.22	1.23	<b>5.35</b>	<b>1.90</b>	<b>5.84</b>

higher in MZ twins than in DZ twins or full siblings. Likewise, no conclusion can be drawn when comparing results for male and female sibling pairs, with  
795 significance values varying across different sibling types and modalities.

The asymmetry of function in the brain, for example the hemispheric specializations of language and motor functions, has been extensively studied [69]. Similarly, studies have analyzed anatomical brain asymmetries based on voxel-based morphometry, sulci and other brain features [8].

800 The multi-modal and multi-region analysis presented in this work extends previous studies of brain asymmetry in the literature by considering sibling types. Accounting for various confounds, including gender, genetics, handedness and age, this analysis has shown a greater asymmetry in feature correspondences between MZ twins than DZ twins and full siblings, mostly found in white matter  
805 regions and T2w images. Moreover, differences in asymmetry appear to be directional.

#### 4. Discussion

In this section, we summarize the findings of this study and emphasize their link to previous investigations. We also highlight its limitations and discuss

810 additional considerations.

### *Identification of genetically-related subjects*

Our experiments on the task of identifying genetically-related subjects led to various useful observations. We established that the proposed fingerprint, generated from individual modalities or their combination, respects the genetic relationships between siblings, with MZ twins being more similar than DZ twins or full siblings [50, 13].

3D SIFT detects local points of extrema (minima or maxima) based on changes in the magnitudes in a given image. For example, for T1w the features are located at the boundaries of white matter and grey matter, including subcortical structure boundaries, as shown in feature correspondence visualization. Abstractly speaking it draws discriminative blob like structures while considering scale-space. The intuition is that these discriminative blob like structures capture the key points of change in a given image, a representative summary in scale-space. As such matching them leads to better identification as opposed to voxel-wise full image comparison (say using sum of squared distance) and performs comparably to Freesurfer derived measures of volume, thickness, and area, as well as rfMRI based netmats.

Analyzing the manifold approximation, we also showed that a discriminative fingerprint could be obtained with only 150 spectral components (i.e., leading eigenvectors of the normalized adjacency matrix of the subject proximity graph). When compared to a baseline using full images as features, this compact fingerprint yielded significantly better performances, for all modalities and sibling types. This illustrates the high efficiency of our fingerprint and its advantages for comparing large groups of subjects. Moreover, while Laplacian eigenmaps were used to embed the subject proximity graph, the proposed framework is generic and other approaches (e.g., see [31]) can be employed for this task.

The comparison of fingerprints obtained from structural MRI, diffusion MRI, and resting state fMRI highlighted the informativeness and complementarity of these modalities.

840 Among individual modalities, resting state fMRI based fingerprint performed best for DZ/FS identification and had similar performance to FA/GFA for MZ twin identification. We hypothesize that good performance of rfMRI netmat is due to the discriminative power of connectivity profiles, which is a result of integration over a relatively long period of time (4800 volumes, and 4 runs  
845 of 15 minutes each), as mentioned in Finn et al. [9]. Also, the connectivity profile is based on certain parcellation of brain, adding addition information about individual variability. Moreover, while the MAP values for FA/GFA are similar to rfMRI based MZ twin identification, mean recall@10 and relative identification % showed that FA perfoms slightly better than rfMRI (2.54%  
850 unique MZ pair identification as opposed to 0.84% pairs.

We hypothesize that the better performance of BoF based FA fingerprint is due to the framework capturing the changes in contrast/magnitude in FA maps. Since it conveys certain information about white matter bundles and their boundaries in addition to separation between grey matter and white matter,  
855 FA performs better than T1w and T2w as well as rfMRI (for MZ twins). The distribution of feature matches in the visualization of one pair of feature correspondences shows this qualitatively.

Furthermore, results of this study demonstrate the usefulness of combining multiple modalities in a brain fingerprint. Thus, better performances were obtained with a combined set of modalities than with these modalities alone. Our  
860 results are consistent with previous studies underlining the benefit of a multi-modal fusion [24, 25]. As a note, we have focused on major observations only, the comprehensive analysis is open to various other observations including comparison of DTI vs GQI measures, inclusion of T1wByT2w MRI ratio images, FreeSurfer measures based identification, etc.  
865

Finally, the fingerprint proposed in this work is motivated by the recent increase in multi-modal brain studies. Multi-modal MRI has been shown useful for the analysis of neurodegenerative disorders [24]. For example, combining multi-modality data also achieves a higher classification performance for identifying  
870 subjects with schizophrenia [70].

### *Applicability of the proposed fingerprint*

Our factor impact analysis demonstrated the robustness of the proposed fingerprint to the non-alignment of images. Furthermore, since image alignment is key for most population level analysis [18], by alleviating this requirement, 875 the proposed fingerprint may help save computational costs and avoids errors introduced during alignment.

Experiments have also shown that scan resolution does not have a significant impact on results, although using lower resolution images reduces the number detected features. Data acquired from multiple sites or scanners often need to 880 be brought to same resolution, introducing small errors during interpolation and re-sampling. The proposed fingerprint may thus be of help for multi-site studies, and pave the way to resolution-independent analyses.

Using retest scans led to no significant changes in results, further validating the robustness of our fingerprint to image acquisition. However, a detailed 885 longitudinal analysis with longer between-scan times would be required to fully confirm this claim.

Similar to the computer vision challenges, the proposed rank retrieval analysis highlight that using twin identification task and MAP as evaluation measure, we can compare brain fingerprints from various modalities and/or their combination. We believe that this could be utilized in future studies. We used the 890 proposed fingerprint to find incorrectly reported zygoty labels and identify retest/duplicate scans of the same subjects. Hence, our fingerprint could serve as efficient and reliable tool for detecting inconsistent information in large cohorts. Another potential application could be to provide physicians with related 895 cases in clinical settings like MCI diagnostic assistance [71].

While various twin studies have analyzed genetic influences based on volume, cortical thickness, surface area, and morphometry [8], this is the first work to use local features and manifold approximation for this problem. Analyzing the distribution of features correspondences across brain regions, in images of different modalities, reveals many interesting insights. Results identify various neuroanatomical regions (e.g., cerebellum, lateral ventricles, ventral diencephalon, 900

hippocampus and thalamus proper) having significantly different match counts in MZ twins than DZ twins or full siblings. These findings relate to those reported in [8], which were obtained on a different dataset (mean subject of age of 56 years, compared to a median of 29 years in the HCP dataset). Another key aspect of our analysis is the size of the subject cohort, larger than that of related studies [50].

#### *Additional considerations*

In this work, we used a rank retrieval analysis to evaluate the relation between fingerprint similarity and genetic proximity. However, estimating heritability directly, for instance using the approach described in [49], would provide a better quantification of genetic influence on fingerprint features. Heritability of multi-modal brain imaging phenotypes, using a more than 8,000 subjects from UK Bio-bank [17], has been studied in [48]. Similarly, [47] report heritability of multi-modal functional connectivity using 800 HCP subjects. An extensive analysis will be required to assess heritability of compact fingerprints and relate the findings with these state-of-the-art studies.

Moreover, when building the subject proximity graph, we assumed the independence of feature correspondences across modalities. However, a deeper analysis could be carried out to investigate false feature correspondences and correlation between features correspondences across modality. As mentioned before, other manifold embedding methods like Locally Linear Embedding (LLE) [33] could also be employed for this step.

In this study we analyzed data from sMRI, dMRI and rfMRI. However, the proposed framework is generic and could be extended to other modalities like task-fMRI, PET-MRI and quantitative T1/T2 maps. Finally, this study focused on comparing and combining different modalities for identifying genetically-related subjects, misreported zygosity labels and duplicate/retest scans. An interesting extension of this work would be to assess whether our fingerprint can be used as a biomarker to identify subjects with cognitive or neurological disorders. Publicly available data, for instance from the ADNI dataset [23] or

Parkinson’s Progression Markers Initiative (PPMI) dataset [72], could be used for this analysis.

## 5. Conclusion

935 We presented a brain fingerprint, based on manifold approximation, for the multi-modal analysis of genetically-related subjects. In a rank retrieval analysis, mean recall@ $k$  and mean average precision were used to measure the relation between fingerprint similarity and genetic proximity, as well as the contribution/complementarity of information from different MRI modalities. Results indicated that a compact fingerprint of only 150 features could identify 940 genetically-related subjects better than a baseline using full images as features. Our experiments also showed that each modality provides complementary information which can uniquely identify some sibling pairs. Furthermore, we demonstrated the benefit of considering multiple modalities in the fingerprint, 945 combined modalities leading to a better performance than considering these modalities separately. Moreover, our analysis demonstrated the robustness of the proposed fingerprint to various factors, including image alignment, scan resolution and subject age. The reproducibility of results was also confirmed using retest scans from the HCP dataset, showing our fingerprint to be robust 950 to variability in image acquisition.

The usefulness of our fingerprint was assessed on the tasks of identifying incorrectly reported zygosity and retest/duplicate scans in large dataset. Results of this experiment highlighted the effectiveness of our fingerprint, with MAP values near 100% for all test cases. Moreover, analyzing the distribution of features correspondences across the brain revealed neuroanatomical regions (e.g., 955 cerebellum, lateral ventricles, ventral diencephalon, hippocampus and thalamus proper) with significantly different match counts in MZ twins compared to DZ twins or full siblings. This work could be extended by further investigating the differences, in terms of feature location and similarity, between dizygotic twins and non-twin siblings. A deeper analysis of aging effects could also be performed, 960

for instance, using longitudinal data. Such analysis would help understand the effect of neuroplasticity on individual brain characteristics.

### Acknowledgements

Data were provided in part by the Human Connectome Project, WU-Minn  
965 Consortium (Principal Investigators: David Van Essen and Kamil Ugurbil;  
1U54MH091657) funded by the 16 NIH Institutes and Centers that support  
the NIH Blueprint for Neuroscience Research; and by the McDonnell Center  
for Systems Neuroscience at Washington University. We thank the reviewers  
whose comments/suggestions helped improve and clarify this manuscript. We  
970 also thank researchers processing Human Connectome Project data for provid-  
ing the pre-processed data and rfMRI netmats.

### Code availability

Matlab scripts were written to perform the analyses described; this code is available from the authors upon request.

### 975 References

- [1] E. M. Gordon, T. O. Laumann, B. Adeyemo, S. E. Petersen, Individual variability of the system-level organization of the human brain, *Cerebral Cortex* 27 (1) (2017) 386–399.
- [2] J.-F. Mangin, D. Riviere, A. Cachia, E. Duchesnay, Y. Cointepas,  
980 D. Papadopoulos-Orfanos, P. Scifo, T. Ochiai, F. Brunelle, J. Regis, A  
framework to study the cortical folding patterns, *Neuroimage* 23 (2004)  
S129–S138.
- [3] D. M. Barch, G. C. Burgess, M. P. Harms, S. E. Petersen, B. L. Schlaggar,  
M. Corbetta, M. F. Glasser, S. Curtiss, S. Dixit, C. Feldt, et al., Function in  
985 the human connectome: task-fMRI and individual differences in behavior,  
*Neuroimage* 80 (2013) 169–189.



- [4] E. M. Gordon, T. O. Laumann, B. Adeyemo, A. W. Gilmore, S. M. Nelson, N. U. Dosenbach, S. E. Petersen, Individual-specific features of brain systems identified with resting state functional correlations, *NeuroImage* 146 (2017) 918–939.
- [5] S. Mueller, D. Wang, M. D. Fox, B. T. Yeo, J. Sepulcre, M. R. Sabuncu, R. Shafee, J. Lu, H. Liu, Individual variability in functional connectivity architecture of the human brain, *Neuron* 77 (3) (2013) 586–595.
- [6] U. Bürgel, K. Amunts, L. Hoemke, H. Mohlberg, J. M. Gilsbach, K. Zilles, White matter fiber tracts of the human brain: three-dimensional mapping at microscopic resolution, topography and intersubject variability, *Neuroimage* 29 (4) (2006) 1092–1105.
- [7] M. T. de Schotten, A. Bizzi, F. Dell’Acqua, M. Allin, M. Walshe, R. Murray, S. C. Williams, D. G. Murphy, M. Catani, et al., Atlasing location, asymmetry and inter-subject variability of white matter tracts in the human brain with MR diffusion tractography, *Neuroimage* 54 (1) (2011) 49–59.
- [8] C. Wachinger, P. Golland, W. Kremen, B. Fischl, M. Reuter, A. D. N. Initiative, et al., Brainprint: a discriminative characterization of brain morphology, *NeuroImage* 109 (2015) 232–248.
- [9] E. S. Finn, X. Shen, D. Scheinost, M. D. Rosenberg, J. Huang, M. M. Chun, X. Papademetris, R. T. Constable, Functional connectome fingerprinting: identifying individuals using patterns of brain connectivity, *Nature neuroscience*.
- [10] J. Liu, X. Liao, M. Xia, Y. He, Chronnectome fingerprinting: Identifying individuals and predicting higher cognitive functions using dynamic brain connectivity patterns, *Human brain mapping* 39 (2) (2018) 902–915.
- [11] K. Kumar, C. Desrosiers, K. Siddiqi, O. Colliot, M. Toews, Fiberprint: A subject fingerprint based on sparse code pooling for white matter fiber analysis, *NeuroImage* 158 (2017) 242 – 259.

- 1015 doi:<http://dx.doi.org/10.1016/j.neuroimage.2017.06.083>.  
URL <http://www.sciencedirect.com/science/article/pii/S1053811917305669>
- [12] F.-C. Yeh, D. Badre, T. Verstynen, Connectometry: A statistical approach harnessing the analytical potential of the local connectome, *NeuroImage* 125 (2016) 162–171.  
1020
- [13] P. M. Thompson, T. Ge, D. C. Glahn, N. Jahanshad, T. E. Nichols, Genetics of the connectome, *Neuroimage* 80 (2013) 475–488.
- [14] R. Geevarghese, D. E. Lumsden, N. Hulse, M. Samuel, K. Ashkan, Subcortical structure volumes and correlation to clinical variables in parkinson’s disease, *Journal of Neuroimaging* 25 (2) (2015) 275–280.  
1025
- [15] S. Goldman, L. M. O’Brien, P. A. Filipek, I. Rapin, M. R. Herbert, Motor stereotypies and volumetric brain alterations in children with autistic disorder, *Research in autism spectrum disorders* 7 (1) (2013) 82–92.
- [16] D. C. Van Essen, S. M. Smith, D. M. Barch, T. E. Behrens, E. Yacoub, K. Ugurbil, W.-M. H. Consortium, et al., The WU-minn human connectome project: an overview, *Neuroimage* 80 (2013) 62–79.  
1030
- [17] C. Sudlow, J. Gallacher, N. Allen, V. Beral, P. Burton, J. Danesh, P. Downey, P. Elliott, J. Green, M. Landray, et al., UK biobank: an open access resource for identifying the causes of a wide range of complex diseases of middle and old age, *PLoS medicine* 12 (3) (2015) e1001779.  
1035
- [18] J. Dubois, R. Adolphs, Building a science of individual differences from fmri, *Trends in cognitive sciences* 20 (6) (2016) 425–443.
- [19] E. M. Gordon, T. O. Laumann, A. W. Gilmore, D. J. Newbold, D. J. Greene, J. J. Berg, M. Ortega, C. Hoyt-Drazen, C. Gratton, H. Sun, et al., Precision functional mapping of individual human brains, *Neuron* 95 (4) 1040 (2017) 791–807.

- [20] H. Hampel, S. OBryant, S. Durrleman, E. Younesi, K. Rojkova, V. Escott-Price, J.-C. Corvol, K. Broich, B. Dubois, S. Lista, et al., A precision medicine initiative for alzheimers disease: the road ahead to biomarker-guided integrative disease modeling, *Climacteric* 20 (2) (2017) 107–118.  
1045
- [21] E. S. Finn, R. T. Constable, Individual variation in functional brain connectivity: implications for personalized approaches to psychiatric disease, *Dialogues in clinical neuroscience* 18 (3) (2016) 277.
- [22] O. Miranda-Dominguez, B. D. Mills, S. D. Carpenter, K. A. Grant, C. D. Kroenke, J. T. Nigg, D. A. Fair, Connectotyping: model based fingerprinting of the functional connectome, *PloS one* 9 (11) (2014) e111048.  
1050
- [23] M. Toews, W. Wells, D. L. Collins, T. Arbel, Feature-based morphometry: Discovering group-related anatomical patterns, *NeuroImage* 49 (3) (2010) 2318–2327.
- [24] V. D. Calhoun, J. Sui, Multimodal fusion of brain imaging data: A key to finding the missing link (s) in complex mental illness, *Biological psychiatry: cognitive neuroscience and neuroimaging* 1 (3) (2016) 230–244.  
1055
- [25] A. R. Groves, S. M. Smith, A. M. Fjell, C. K. Tamnes, K. B. Walhovd, G. Douaud, M. W. Woolrich, L. T. Westlye, Benefits of multi-modal fusion analysis on a large-scale dataset: life-span patterns of inter-subject variability in cortical morphometry and white matter microstructure, *Neuroimage* 63 (1) (2012) 365–380.  
1060
- [26] J. Sui, G. D. Pearlson, Y. Du, Q. Yu, T. R. Jones, J. Chen, T. Jiang, J. Bustillo, V. D. Calhoun, In search of multimodal neuroimaging biomarkers of cognitive deficits in schizophrenia, *Biological Psychiatry* 78 (11) (2015) 794 – 804, schizophrenia: Glutamatergic Mechanisms of Cognitive Dysfunction and Treatment. doi:<http://dx.doi.org/10.1016/j.biopsych.2015.02.017>.  
1065  
URL <http://www.sciencedirect.com/science/article/pii/S0006322315001274>  
1070

- [27] W. Zhang, R. Li, H. Deng, L. Wang, W. Lin, S. Ji, D. Shen, Deep convolutional neural networks for multi-modality isointense infant brain image segmentation, *NeuroImage* 108 (2015) 214–224.
- [28] F. Liem, G. Varoquaux, J. Kynast, F. Beyer, S. K. Masouleh, J. M. Huntenburg, L. Lampe, M. Rahim, A. Abraham, R. C. Craddock, et al., Predicting brain-age from multimodal imaging data captures cognitive impairment, *NeuroImage* 148 (2017) 179–188.
- [29] S. Liu, W. Cai, S. Liu, F. Zhang, M. Fulham, D. Feng, S. Pujol, R. Kikinis, Multimodal neuroimaging computing: a review of the applications in neuropsychiatric disorders, *Brain informatics* 2 (3) (2015) 167–180.
- [30] S. Liu, W. Cai, S. Liu, F. Zhang, M. Fulham, D. Feng, S. Pujol, R. Kikinis, Multimodal neuroimaging computing: the workflows, methods, and platforms, *Brain informatics* 2 (3) (2015) 181–195.
- [31] Y. Bengio, A. Courville, P. Vincent, Representation learning: A review and new perspectives, *IEEE transactions on pattern analysis and machine intelligence* 35 (8) (2013) 1798–1828.
- [32] J. B. Tenenbaum, V. De Silva, J. C. Langford, A global geometric framework for nonlinear dimensionality reduction, *science* 290 (5500) (2000) 2319–2323.
- [33] S. T. Roweis, L. K. Saul, Nonlinear dimensionality reduction by locally linear embedding, *science* 290 (5500) (2000) 2323–2326.
- [34] M. Belkin, P. Niyogi, Laplacian eigenmaps for dimensionality reduction and data representation, *Neural computation* 15 (6) (2003) 1373–1396.
- [35] J. B. Kruskal, M. Wish, *Multidimensional scaling*, Vol. 11, Sage, 1978.
- [36] P. Aljabar, R. Wolz, D. Rueckert, Manifold learning for medical image registration, segmentation, and classification, *Machine Learning in Computer-Aided Diagnosis: Medical Imaging Intelligence and Analysis: Medical Imaging Intelligence and Analysis* (2012) 351.

- [37] S. Gerber, T. Tasdizen, P. T. Fletcher, S. Joshi, R. Whitaker, A. D. N. Initiative, et al., Manifold modeling for brain population analysis, *Medical image analysis* 14 (5) (2010) 643–653.
- [38] T. Brosch, R. Tam, A. D. N. Initiative, et al., Manifold learning of brain mris by deep learning, in: *International Conference on Medical Image Computing and Computer-Assisted Intervention*, Springer, 2013, pp. 633–640.
- [39] D. G. Lowe, Object recognition from local scale-invariant features, in: *Computer vision, 1999. The proceedings of the seventh IEEE international conference on*, Vol. 2, Ieee, 1999, pp. 1150–1157.
- [40] D. G. Lowe, Distinctive image features from scale-invariant keypoints, *International journal of computer vision* 60 (2) (2004) 91–110.
- [41] C.-F. Tsai, Bag-of-words representation in image annotation: A review, *ISRN Artificial Intelligence* 2012.
- [42] M. Muja, D. G. Lowe, Fast approximate nearest neighbors with automatic algorithm configuration., *VISAPP* (1) 2 (331-340) (2009) 2.
- [43] M. Toews, W. M. Wells, L. Zöllei, A feature-based developmental model of the infant brain in structural MRI, in: *International Conference on Medical Image Computing and Computer-Assisted Intervention*, Springer, 2012, pp. 204–211.
- [44] M. Toews, W. M. Wells, Efficient and robust model-to-image alignment using 3d scale-invariant features, *Medical image analysis* 17 (3) (2013) 271–282.
- [45] M. Toews, W. M. Wells, How are siblings similar? how similar are siblings? large-scale imaging genetics using local image features, in: *2016 IEEE 13th International Symposium on Biomedical Imaging (ISBI)*, 2016, pp. 847–850. doi:10.1109/ISBI.2016.7493398.

- 1125 [46] K. Kumar, L. Chauvin, M. Toews, O. Colliot, C. Desrosiers, Multi-modal analysis of genetically-related subjects using sift descriptors in brain mri, in: Workshop on Computational Diffusion MRI, CDMRI 2017, MICCAI Workshop, 2017.  
URL [arXiv:1709.06151v1](https://arxiv.org/abs/1709.06151v1)
- 1130 [47] G. L. Colclough, S. M. Smith, T. E. Nichols, A. M. Winkler, S. N. Sotiropoulos, M. F. Glasser, D. C. Van Essen, M. W. Woolrich, The heritability of multi-modal connectivity in human brain activity, *Elife* 6.
- [48] L. Elliott, K. Sharp, F. Alfaro-Almagro, G. Douaud, K. Miller, J. Marchini, S. Smith, The genetic basis of human brain structure and function: 1,262  
1135 genome-wide associations found from 3,144 gwas of multimodal brain imaging phenotypes from 9,707 uk biobank participants, *BioRxiv* (2017) 178806.
- [49] T. Ge, M. Reuter, A. M. Winkler, A. J. Holmes, P. H. Lee, L. S. Tirrell, J. L. Roffman, R. L. Buckner, J. W. Smoller, M. R. Sabuncu, Multidimensional heritability analysis of neuroanatomical shape, *Nature communications* 7  
1140 (2016) 13291.
- [50] J. S. Peper, R. M. Brouwer, D. I. Boomsma, R. S. Kahn, H. Pol, E. Hilleke, Genetic influences on human brain structure: a review of brain imaging studies in twins, *Human brain mapping* 28 (6) (2007) 464–473.
- [51] D. C. Van Essen, K. Ugurbil, E. Auerbach, D. Barch, T. Behrens, R. Bucholz, A. Chang, L. Chen, M. Corbetta, S. W. Curtiss, et al., The human connectome project: a data acquisition perspective, *Neuroimage* 62 (4)  
1145 (2012) 2222–2231.
- [52] P. Kochunov, N. Jahanshad, D. Marcus, A. Winkler, E. Sprooten, T. E. Nichols, S. N. Wright, L. E. Hong, B. Patel, T. Behrens, et al., Heritability  
1150 of fractional anisotropy in human white matter: a comparison of human connectome project and ENIGMA-DTI data, *Neuroimage* 111 (2015) 300–311.

- [53] S. N. Sotiropoulos, S. Jbabdi, J. Xu, J. L. Andersson, S. Moeller, E. J. Auerbach, M. F. Glasser, M. Hernandez, G. Sapiro, M. Jenkinson, et al., Advances in diffusion mri acquisition and processing in the human connectome project, *Neuroimage* 80 (2013) 125–143.
- [54] M. F. Glasser, S. N. Sotiropoulos, J. A. Wilson, T. S. Coalson, B. Fischl, J. L. Andersson, J. Xu, S. Jbabdi, M. Webster, J. R. Polimeni, et al., The minimal preprocessing pipelines for the human connectome project, *Neuroimage* 80 (2013) 105–124.
- [55] F.-C. Yeh, V. J. Wedeen, W.-Y. I. Tseng, Generalized q-sampling imaging, *IEEE transactions on medical imaging* 29 (9) (2010) 1626–1635.
- [56] A. L. Alexander, J. E. Lee, M. Lazar, A. S. Field, Diffusion tensor imaging of the brain, *Neurotherapeutics* 4 (3) (2007) 316–329.
- [57] S. M. Smith, T. E. Nichols, D. Vidaurre, A. M. Winkler, T. E. Behrens, M. F. Glasser, K. Ugurbil, D. M. Barch, D. C. Van Essen, K. L. Miller, A positive-negative mode of population covariation links brain connectivity, demographics and behavior, *Nature neuroscience* 18 (11) (2015) 1565.
- [58] M. Jenkinson, C. F. Beckmann, T. E. Behrens, M. W. Woolrich, S. M. Smith, *Fsl*, *Neuroimage* 62 (2) (2012) 782–790.
- [59] T. Tuytelaars, K. Mikolajczyk, et al., Local invariant feature detectors: a survey, *Foundations and trends® in computer graphics and vision* 3 (3) (2008) 177–280.
- [60] H. Bay, T. Tuytelaars, L. Van Gool, Surf: Speeded up robust features, *Computer vision–ECCV 2006* (2006) 404–417.
- [61] M. Toews, C. Wachinger, R. S. J. Estepar, W. M. Wells III, A feature-based approach to big data analysis of medical images, in: *International Conference on Information Processing in Medical Imaging*, Springer, 2015, pp. 339–350.

- 1180 [62] Y. Bengio, J.-f. Paiement, P. Vincent, O. Delalleau, N. L. Roux, M. Ouimet, Out-of-sample extensions for lle, isomap, mds, eigenmaps, and spectral clustering, in: *Advances in neural information processing systems*, 2004, pp. 177–184.
- [63] C. Fowlkes, S. Belongie, F. Chung, J. Malik, Spectral grouping using the  
1185 nystrom method, *IEEE transactions on pattern analysis and machine intelligence* 26 (2) (2004) 214–225.
- [64] L. J. O’Donnell, C.-F. Westin, Automatic tractography segmentation using a high-dimensional white matter atlas, *IEEE transactions on medical imaging* 26 (11) (2007) 1562–1575.
- 1190 [65] A. Turpin, F. Scholer, User performance versus precision measures for simple search tasks, in: *Proceedings of the 29th annual international ACM SIGIR conference on Research and development in information retrieval*, ACM, 2006, pp. 11–18.
- [66] S. D. Gale, D. J. Perkel, A basal ganglia pathway drives selective auditory  
1195 responses in songbird dopaminergic neurons via disinhibition, *The Journal of Neuroscience* 30 (3) (2010) 1027–1037.
- [67] T. J. Polderman, B. Benyamin, C. A. De Leeuw, P. F. Sullivan, A. Van Bochoven, P. M. Visscher, D. Posthuma, Meta-analysis of the heritability of human traits based on fifty years of twin studies, *Nature genetics* 47 (7)  
1200 (2015) 702–709.
- [68] S. Holm, A simple sequentially rejective multiple test procedure, *Scandinavian journal of statistics* (1979) 65–70.
- [69] A. W. Toga, P. M. Thompson, Mapping brain asymmetry, *Nature reviews. Neuroscience* 4 (1) (2003) 37.
- 1205 [70] J. Sui, E. Castro, H. He, D. Bridwell, Y. Du, G. D. Pearlson, T. Jiang, V. D. Calhoun, Combination of fmri-smri-eeg data improves discrimination



of schizophrenia patients by ensemble feature selection, in: Engineering in Medicine and Biology Society (EMBC), 2014 36th Annual International Conference of the IEEE, IEEE, 2014, pp. 3889–3892.

- 1210 [71] Y. Gao, E. Adeli-M, M. Kim, P. Giannakopoulos, S. Haller, D. Shen, Medical image retrieval using multi-graph learning for mci diagnostic assistance, in: International Conference on Medical Image Computing and Computer-Assisted Intervention, Springer, 2015, pp. 86–93.
- [72] K. Marek, D. Jennings, S. Lasch, A. Siderowf, C. Tanner, T. Simuni, C. Coffey, K. Kieburtz, E. Flagg, S. Chowdhury, et al., The parkinson progression marker initiative (ppmi), *Progress in neurobiology* 95 (4) (2011) 629–635.
- 1215