



HAL
open science

An MDA Method for Service Modeling by Formalizing REA and Open-edi Business Frameworks with SBVR

Jelena Zdravkovic, Iyad Zikra, Tharaka Ilayperuma

► **To cite this version:**

Jelena Zdravkovic, Iyad Zikra, Tharaka Ilayperuma. An MDA Method for Service Modeling by Formalizing REA and Open-edi Business Frameworks with SBVR. 4th Working Conference on Method Engineering (ME), Apr 2011, Lisbon, Portugal. pp.219-224, 10.1007/978-3-642-19997-4_20. hal-01562882

HAL Id: hal-01562882

<https://inria.hal.science/hal-01562882v1>

Submitted on 17 Jul 2017

HAL is a multi-disciplinary open access archive for the deposit and dissemination of scientific research documents, whether they are published or not. The documents may come from teaching and research institutions in France or abroad, or from public or private research centers.

L'archive ouverte pluridisciplinaire **HAL**, est destinée au dépôt et à la diffusion de documents scientifiques de niveau recherche, publiés ou non, émanant des établissements d'enseignement et de recherche français ou étrangers, des laboratoires publics ou privés.



Distributed under a Creative Commons Attribution 4.0 International License

An MDA Method for Service Modeling by Formalizing REA and Open-edi Business Frameworks with SBVR

Jelena Zdravkovic, Iyad Zikra, and Tharaka Ilayperuma

Department of Computer and Systems Sciences
Stockholm University and Royal Institute of Technology
Forum 100, SE-164 40 Kista, Sweden
{jelenaz, iyad, si-tsi}@dsv.su.se

Abstract. Business frameworks offer great opportunities of communication between people for working on the enterprise system engineering processes, as well as for eliciting services that the enterprise can offer in collaboration contexts. However, these kinds of frameworks, such as Resource-Event-Agent and Open-edi, recently unified in Open-edi Business Ontology (OeBTO), lack formal representations. This fact considerably limits their use in system development, particularly in model-driven development methods where the efficiency of transformations is of great importance. In this paper we suggest a formalization of OeBTO using OMG's standard Semantics of Business Vocabulary and Business Rules (SBVR), as a method for creating a service-centric business model. This makes it possible to provide the necessary formal logic foundation to allow automatic processing of the business model and its transformation to a system-level service model. An example from the bank loan business sector is used to argue the application of the method.

Keywords: business model, business collaboration, service engineering, model-driven development, REA, Open-edi, OeBTO, MDA, SBVR

1 Introduction

Model Driven Architecture (MDA), as a formalization of Model Driven Development (MDD) approach, promotes a method for system development relying on the model transformation paradigm. MDA prescribes modeling of the business-level information as a Computational Independent Model (CIM), which is further transformed to a system-centric form called Platform Independent Model (PIM), and at the end to a Platform Specific Model (PSM) that adds the technology details needed for implementation on a specific software platform [1].

In the service-oriented business sector, capturing the consumer needs for economic resources plays an essential role in the elicitation of the services that will deliver these values, therein seizing a desirable competitive distinction. In that context, business models offer considerable advantages compared to process models - they can capture

a high-level description of a whole business in a single and easily-understandable view. Business ontologies, such as Resource-Event-Agent, REA [2], facilitate modeling of actors involved in a business scenario and explain their relationships, formulating them in terms of *economic values (i.e. resources)* exchanged between the actors. Another important aspect concerns elicitation of explorative business service portfolios by spanning the whole business transaction lifecycle, which, according to the International Organization for Standardization (ISO) Open-edi initiative [3] involves planning, identification, negotiation, actualization, and post-actualization.

Recently, the ISO has focused on integrating REA and the Open-edi frameworks to create Open-edi Business Transaction Ontology (OeBTO), to specify the concepts and relationships involved in collaborative business environments. OeBTO captures the economic commitments realized by economic and business events performed by the partners, along the collaboration lifecycle in the Open-edi sense.

Following the previously outlined needs of service engineering, and MDA, in this study we consider the use of OeBTO to define a service-centric business model (i.e. CIM) and a method for its creation. To strengthen the formalism of OeBTO and thereby create an unambiguous and processable CIM, we consider the use of the OMG's Semantics of Business Vocabulary and Business Rules [4]. SBVR is an approach which allows specifying business in terms of a vocabulary and rules in a business-friendly language, while being formal enough to be readable by systems.

Being rooted in the use of MDA and two well-established business frameworks; REA and Open-edi formalized by SBVR, we believe that the method we propose for creating CIM forms a solid basis to be efficiently transformed to a SOA-aligned system model and further to Web services.

The rest of the paper is organized as follows. Section 2 gives the overviews on the used business frameworks, and SBVR. In Section 3 we present our method for identification and modeling of business services. In Section 4, we refer to the work related to ours, and conclude the paper.

2 Background

In this section, we briefly describe REA and Open-edi business frameworks and their integration in Open-edi Transaction Ontology (OeBTO); then we give an overview of the Semantics of Business Vocabulary and Business Rules (SBVR) standard.

Integration of REA and Open-edi Business Frameworks in OeBTO

The core concepts in the Resource-Event-Agent (REA) framework are *resource*, *event*, and *agent* [2]. It is assumed that every business activity can be described as an event where two agents exchange economic values, i.e. resources. Economic resources may be classified as *goods*, *rights* or *services*. To acquire a resource, an agent (i.e. actor) has to give up some other resource (*economic duality*). In the study [5], the REA framework has been extended to capture additional granularity levels of business activities of enterprises. The resulting framework has integrated three vertical layers: *Value Chain*, *Business Process* and *Business Event*:

Open-edi Business Transaction Ontology (OeBTO) extends the REA ontology with the concepts aimed to facilitate the modeling of business collaborations defined in the ISO Open-edi initiative [6]. According to Open-edi, business collaborations span five phases: *planning*, *identification*, *negotiation*, *actualization* and *post-actualization*. In the *planning phase*, the customer and the provider are engaged in activities to identify the actions needed for selling or purchasing goods and services. The *identification phase* involves the activities needed to exchange information among providers and potential customers regarding selling or purchasing goods and services. During the *negotiation phase*, contract terms are proposed and completed. The *actualization phase* includes all the activities necessary for exchanging goods and services between involved actors as agreed during negotiations. The *post-actualization phase* encompasses the activities and associated exchanges between involved actors after the major resources are provided.

SBVR

Recently, the Object Management Group (OMG) has adopted the Semantics of Business Vocabulary and Business Rules (SBVR) as a standard for capturing business vocabularies and rules [4]. The term “business” in SBVR is used in a general sense, referring not only to activities that imply an exchange of goods or services for money, but also to other types of activities where rules need to be defined and documented, such as education, health care, or law [7].

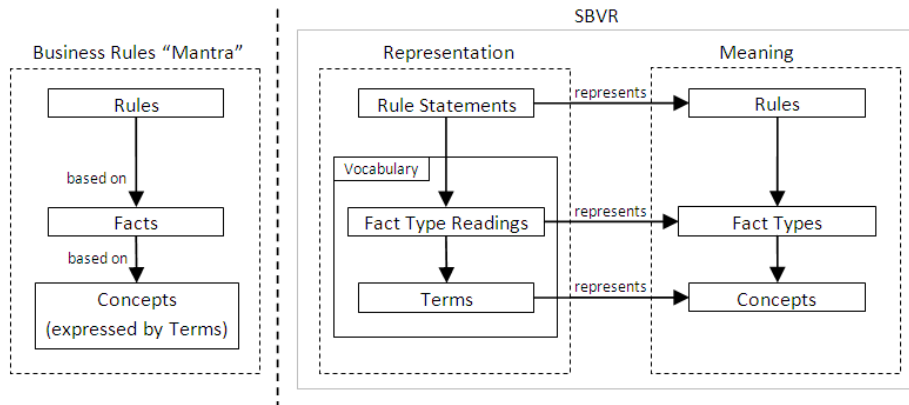


Fig. 1. Meaning, representation, and the support of business rules in SBVR

The basic idea around which SBVR is developed is that business rules are built on top of facts, which in turn are built on top of terms that represent concepts. Furthermore, SBVR acknowledges the difference between meaning and the representation used to convey that meaning. Figure 1 above shows how SBVR realizes the business rules and also emphasizes the independence of meaning and its representation.

3 Creating Service-centric SBVR-based Business Model

In this study we utilize the MDA method to model services. In that effort, we consider REA and Open-edi (i.e. OeBTO) as an established conceptual basis for the business collaboration context. To obtain a service-centric CIM, we propose the following:

- A classification of the notion of Business Transaction in OeBTO to enable CIM to describe different value configurations.
- An extension to the original OeBTO to capture service-related notions, such as structure, behavior or policies.
- A (re)formulation of OeBTO using SBVR, to increase the formalism of CIM and thereby facilitate transformations to the PIM level.

Method for Creating a Three-layered Business Model

According to the REA framework, the method for describing the business of an enterprise comprises the decomposition of business activities along three granularity layers: value chain, business processes and business events (Figure 2). In the following, we will outline a method for creating each of the layers, where the concepts on each of the layers are defined using SBVR-based OeBTO.

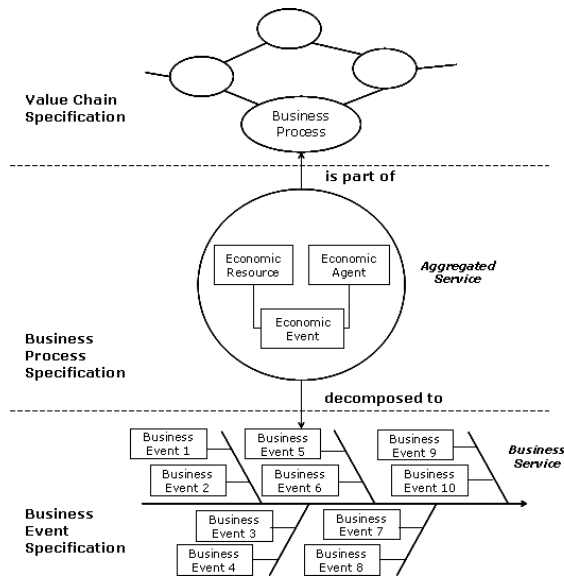


Fig. 2. The three-layered REA business framework

Step 1: Value Chain Specification

In this step the business (i.e. value-adding) processes in the highest layer of the REA framework are identified, using a service-aware value configuration, such as the classification that includes traditional *value chain*, *value shop*, and *value network* [8].

Step 2: Business Process Specification

Moving to the middle layer of the REA framework, each identified business process (transaction, in OeBTO) is explored to find the partners involved in it, as well as the economic resources being exchanged. Each economic exchange gives rise to an *aggregated service*, which will be further expanded on the next layer of the framework, to discover the actual business services that will realize the delivery of the economic exchange.

Step 3: Business Event Specification

At the bottom layer of the REA framework, the economic events of the economic exchange are expanded over the five Open-edi business transaction phases. This is intended to discover the candidate business services and business events. According to OeBTO, the business event is used to represent the business activities elicited for every business transaction phase at the third layer. In order to capture the services that compose the aggregated service and at the same time aggregate related business events, we introduce the *business service* element. A business service is a standalone service that can be reused as part of other aggregated services to provide other economic exchanges. In Figure 3, a small excerpt of the formalization of OeBTO using SBVR is illustrated. For the full specification, the reader is referred to [9]

aggregated service defines economic exchange

Definition: the aggregated service describes the aggregation of services which will realize and support the delivery of the economic exchange.

business transaction phase includes business service

Necessity: **business transaction phase includes at least one business service**

Fig. 3. An excerpt of the formalization of OeBTO using SBVR.

From the MDA perspective, the obtained service-aware OeBTO model is used as the input for creating a system model, i.e. Platform Independent Model (PIM). Since SBVR is completely grounded in formal logic, it gives the added benefit of automatic model processing, i.e.:

- Making it possible for tools to ensure the integrity of OeBTO models.
- Ensuring the integrity of transformations that produce PIM models based on the OeBTO model.

5 Related Work and Conclusion

In this study, we have applied the MDA method to design business-services, which may be further transformed to system services and implemented using Web services.

Lately, research in both academic and industrial communities have implied that when designing service-oriented software solutions, the starting point should be the business models of enterprises [10], [11], [12] and [13]. This fact, according to the referred studies, is shifting the focus of large scale e-service design to the context of economic resource transfers. Our method reported in [14] differs from those studies in the way that we set the focus on the analysis of business transactions relying on the

OeBTO standardization effort, and expanding them along a number of collaboration phases to get a rich business service portfolio. The aim of this study has been to further improve the use of OeBTO for service modeling in the MDA method, by formalizing it with SBVR, and to use SBVR to guide transformations toward PIM.

The major strength of the proposed method is the use of REA and Open-edi frameworks formalized with SBVR for modeling CIM; in that way we have obtained a method which facilitate creating a declarative-type CIM, unambiguous and processable, i.e. with the capability to be further transformed with a high extent of automation to system-centric service model (PIM).

References

1. Kleppe, A., Warmer, J., Bast, W.: MDA Explained. Addison-Wesley Professional (2003)
2. McCarthy, W. E.: The REA Accounting Model: A Generalized Framework for Accounting Systems in a Shared Data Environment. *The Accounting Review* (1982)
3. ISO/IEC: Operational aspects of Open-edi implementation. ISO Standard 15944-1 (2002)
4. The Object Management Group (OMG): Semantic of Business Vocabulary and Business Rules (SBVR), v1.0. OMG standard, <http://www.omg.org/spec/SBVR/1.0/PDF>
5. Geerts, G., McCarthy, W.E.: An Ontological Analysis of the Primitives of the Extended-REA Enterprise Information Architecture. *The International Journal of Accounting Information Systems*, Vol.3, pp. 1-16 (2002)
6. ISO/IEC: Business transaction scenarios - Accounting and economic ontology. ISO Standard 15944-4 (2007)
7. Linehan, M. H.: SBVR Use Cases. In: *Proceedings of the International Symposium on Rule Representation, Interchange and Reasoning on the Web*. N. Bassiliades, G. Governatori, and A. Paschke, Eds. LNCS Vol. 5321, pp.182-196. Springer-Verlag (2008)
8. Stabell, C. B., Fjeldstad, O. D.: Configuring value for competitive advantage: on chains, shops, and networks. *Strategic Management Journal*. Vol. 19, pp. 413-437 (1998)
9. Zikra, I.: SBVR-based Service-extended OeBTO Meta Model. Technical Report. http://people.dsv.su.se/~iyad/public/SBVR-Based_OeBTO_Meta_Model.pdf
10. Baida, Z., Gordijn, J., Saele, H., Akkermans, H., Morch, A.: An Ontological Approach for Eliciting and Understanding Needs in e-Services. In: *Proceedings of 17th International Conference on Advanced Information Systems Engineering (CAiSE 2005)*. LNCS Vol. 3520 (pp.400-414). Springer-Verlag (2005)
11. Cherbakov, L., Galambos, G., Harishankar, R., Kalyana, S., & Rackham, G.: Impact of Service Orientation at the Business Level. *IBM Systems Journal*, Vol. 44(4) (pp. 653-668). IBM Corp. (2005)
12. Andersson B., Johannesson P., Zdravkovic J.: Aligning Goals and Services through Goal and Business Modeling. *The International Journal of Information Systems and e-Business Management (ISEB)*, Special issue on Design and Management of Business Models and Processes in Services Science, Vol. 7 (pp. 143-169) Springer Berlin/Heidelberg (2007)
13. Gordijn, J., van Eck, P., Wieringa, R.: Requirements Engineering Techniques for e-Services. In D. Georgakopoulos and M.P. Papazoglou (Ed.), *Service-Oriented Computing: Cooperative Information Systems series* (pp. 331-352). The MIT Press. Cambridge (2009)
14. Zdravkovic, J., Ilayperuma, T. A Model-driven Approach for Designing E-Services Using Business Ontological Frameworks. *Proceedings of 14th IEEE International EDOC Conference*. IEEE Computer Society (2010), pp 121-130