



HAL
open science

Optimal Wind Bidding Strategies in Day-Ahead Markets

Isaias R. Gomes, Hugo I. Pousinho, Rui Melício, Victor F. Mendes

► To cite this version:

Isaias R. Gomes, Hugo I. Pousinho, Rui Melício, Victor F. Mendes. Optimal Wind Bidding Strategies in Day-Ahead Markets. 7th Doctoral Conference on Computing, Electrical and Industrial Systems (DoCEIS), Apr 2016, Costa de Caparica, Portugal. pp.475-484, 10.1007/978-3-319-31165-4_44 . hal-01438274

HAL Id: hal-01438274

<https://inria.hal.science/hal-01438274>

Submitted on 17 Jan 2017

HAL is a multi-disciplinary open access archive for the deposit and dissemination of scientific research documents, whether they are published or not. The documents may come from teaching and research institutions in France or abroad, or from public or private research centers.

L'archive ouverte pluridisciplinaire **HAL**, est destinée au dépôt et à la diffusion de documents scientifiques de niveau recherche, publiés ou non, émanant des établissements d'enseignement et de recherche français ou étrangers, des laboratoires publics ou privés.



Distributed under a Creative Commons Attribution 4.0 International License

Optimal Wind Bidding Strategies in Day-Ahead Markets

Isaias L.R. Gomes², Hugo M.I. Pousinho¹, Rui Melício^{1,2}, Victor M.F. Mendes^{2,3}

¹IDMEC/LAETA, Instituto Superior Técnico, Univ. de Lisboa, Lisbon, Portugal

²Dpt. de Física, Escola de Ciências e Tecnologia Universidade de Évora

³Instituto Superior de Engenharia de Lisboa, Lisboa; ruimelicio@gmail.com

Abstract. This paper presents a computer application (CoA) for wind energy (WEn) bidding strategies (BStr) in a pool-based electricity market (EMar) to better accommodate the variability of the renewable energy (ReEn) source. The CoA is based in a stochastic linear mathematical programming (SLPr) problem. The goal is to obtain the optimal wind bidding strategy (OWBS) so as to maximize the revenue (MRev). Electricity prices (EPr) and financial penalties (FiPen) for shortfall or surplus energy deliver are modeled. Finally, conclusions are addressed from a case study, using data from the pool-based EMar of the Iberian Peninsula.

Keywords: Bidding strategies; wind power system; stochastic linear programming; day-ahead market

1 Introduction

A growing attention in ReEn sources has been followed over the last years due to its conversion into electric energy (EEn) free of pollutant emission and availability in all over the world [1]. E.U. countries are integrating ReEn into the electric grid (EGr) to fulfill Energy-2020 [2]. ReEn incentive has appeared and after 2012 the adoption by countries of one or even more incentives is a noteworthy fact [3]. Incentives include feed-in-tariff, guaranteed grid access, green certificates, investments incentives, tax credits and soft balancing (Bal) costs [4].

In restructured EMar, power producers (PPr) are entities owning power resources and taking part in the EMar with the objective of maximizing total profits. A PPr exploiting sources of WEn also face the uncertainty (Uncer) on the availability of these sources, meaning Uncer in complying with power contracts [5]. The closing of the EMar defines power trading and EPr. However, the remuneration depends on the conformity achieved on the level of the real deliver with the accepted value of the bid at the closing of the EMar. If no conformity is revealed, economic penalization for imbalances (Imb) is due to happen [6].

Uncers on sources of WEn can be accommodated to mitigate the final Uncer on the

delivered energy (DEn). WEn cannot provide a continuous source of energy without Ucnr due to the change of wind speed from one period to another [7]. Typically a WEn farm has more availability of WEn during the night and particular during the winter.

This paper is a research contribution to get the most out of WEn systems in order to conveniently accommodate BStr by the use of a CoA based in a SLPr approach.

2 Relationship to Cyber-Physical Systems

Power systems (PSy) face a shift from non-interactive, manually-controlled power grid (PGr) to the increased mixing of both cyber information and proper physical representations at all scales of the grid. A novel grid which features this cyber and physical grouping is the called Cyber-Physical Energy system (CyPES) [8]. ReEn reliance on weather conditions is a challenge in what regards integration into EGr [9]. A smart grid (SGr) provides flexibility needed to integrate ReEn. The SGr monitors energy flows, reducing cost and improving reliability [10]. Smart Systems (SSy) have been widely used in PSy [11]. The intelligent supervisory control and SCADA systems are pointed out as cyber-physical systems (CyPS) [12]. A CyPS is a combination of computation with physical processes [13]. CPS can be stated as a SSy, having software and hardware for sensing, monitoring, gathering, actuating, computing and controlling [14]. Cyber-Physical Intelligence (CyPI) is one topic to deal with SGr, distributed generation and EMar [11]. The SGr needs CyPI to support tools for planning, EMar monitoring and risk management. Forecasting demand and EPr of EMar use Neural Network, Fuzzy Logic or both [15]. When big database about events is available, an ANN is a favorable option [15].

Multi-Agent System and Data Mining are considered for solving problems of EMar [15]. Intelligent systems are used for diagnosis and alarm processing at dispatch, at generation plant or substations. CyPES is estimated to improve the reliability, efficiency, flexibility, cost-effectiveness, and, very important, electric grid security [8] to avoid attacks [16].

3 State of the Art

Non-dispatchable ReEn sources, like WEn, are challenging for managing the bids in an EMar due to the Ucnr in the unavailability of the ReEn, implying eventual FiPen for energy Imb [6]. So, the eventual deviations (Dev) and consequently penalty of Imb has to be considered. The technical literature presents methods for WEn BStr solved using different approaches. For example, in [17–21] PPr minimize the Dev losses through a portfolio approach, where the PPr can combine the WEn production with energy storage technologies so as to submit the optimal bids.

In [22], an approach is addressed so as to find out the OWBS, considering WEn production time series obtained from a Markov process. In [23] the Dutch EMar is

analyzed, taking into account the robustness of the results obtained from point forecasts and probabilistic forecasts. In [17], the development of BStr is investigated for a WEn farm owner and a deterministic mixed-integer linear programming (MILP) approach for the optimal operation is proposed. In [17] is revealed an absence of treatment of WEn subjected to EMar price Uncer. In [24], linear programming is used for a WEn problem instead of mixed-integer nonlinear programming, concluding gains on robustness, simplicity and computational efficiency, implying adequacy to be integrated in SGrS in order to act in an enough small time processing, supporting decisions not only for helping bidding, but also for comparison in due time with eventual bilateral contracts. This linear programming used for the WEn problem is followed in this paper.

4 Description of the Problem

The wind energy traded (ETr) in a day-ahead electricity market (D-AEM) is subject to Uncers that must be considered in developing of offer strategies (OStr). The Uncers derive from the intermittence and volatility on the WEn and the EPr. These Uncers, if not adequately considered, can trigger losses of revenue (Rev) as a result of penalty incurred by the Imb. The Imb is set as a difference between the supplied energy (SpEn) and the offered energy (OfEn). If a surplus of SpEn in the PGr, then the Imb is positive (Posit); otherwise, the Imb is negative (Negat).

The system operator (SOp) minimizes the Imb value in a PGr using a methodology based on prices penalization for the Dev of the SpEn from the one offered by a producer and accepted in the closing D-AEM. In case of the Imb to be Negat, the SOp maintains the EPr for PPr with surplus of offers and pays a premium EPr produced above the offer. The EPr are as:

$$g_x^+ = g_x^D \quad (1)$$

$$g_x^- = \max(g_x^D, g_x^{UP}) \quad (2)$$

In (1) and (2), g_x^+ and g_x^- , are used in the complementary EMar to the energy Dev, g_x^D is the D-AEM price and g_x^{UP} is the EPr for the energy that desires to be added to the system. In the case of the Imb to be Posit, the EPr are as:

$$g_x^+ = \min(g_x^D, g_x^{DN}) \quad (3)$$

$$g_x^- = g_x^D \quad (4)$$

In (3), g_x^{DN} is the EPr of offers in exceeds. The Uncer in the available of ReEn source results in differences between the OfEn and the actual SpEn. The Rev H_x for period x is as:

$$H_x = \mathcal{G}_x^D I_x^D + P_x \quad (5)$$

In (5), I_x^D is the ETr in the D-AEM and P_x is the Imb income derived from the Bal penalty.

The total Dev for period x is as:

$$\Theta_x = I_x - I_x^D \quad (6)$$

Where I_x is the actual power for period x . P_x is set as:

$$P_x = \mathcal{G}_x^+ \Theta_x, \Theta_x \geq 0 \quad (7)$$

$$P_x = \mathcal{G}_x^- \Theta_x, \Theta_x < 0 \quad (8)$$

In (6), a Posit Dev happens (DevH) when the actual production is greater than the ETr in the D-AEM and a Negat DevH when the actual production lower than the ETr. In this manner, \mathcal{G}_x^+ is the EPr paid for surplus of production and \mathcal{G}_x^- the EPr to be charged for the scarcity. Suppose that \mathcal{G}_x^D is not null and let:

$$r_x^+ = \frac{\mathcal{G}_x^+}{\mathcal{G}_x^D}, r_x^+ \leq 1, h_x^+ = r_x^+ \quad (9)$$

$$r_x^- = \frac{\mathcal{G}_x^-}{\mathcal{G}_x^D}, r_x^- \geq 1, h_x^- = r_x^- \quad (10)$$

(9)-(10) are known respectively by the Posit and the Negat Imb EPr per unit of the closing EPr in the D-AEM. Substituting (9)-(10), respectively in (7)-(8), then:

$$P_x = \mathcal{G}_x^D h_x^+ \Theta_x, \Theta_x \geq 0 \quad (11)$$

$$P_x = \mathcal{G}_x^D h_x^- \Theta_x, \Theta_x < 0 \quad (12)$$

A producer that desires to rectify the energy Dev in a complementary EMAR is subject to an opportunity cost, since D-AEMs have more competitive EPr.

Equation (5) can be rewritten to reveal the opportunity cost. Hence, in case of the energy Dev to be Posit, $\Theta_x > 0$, the Rev is set as:

$$H_x = \mathcal{G}_x^D I_x^D + \mathcal{G}_x^D h_x^+ \Theta_x \quad (13)$$

Using the total Dev stated in (6), the Rev is set as:

$$H_x = \mathcal{G}_x^D I_x^D - \mathcal{G}_x^D (1 - h_x^+) \Theta_x, \Theta_x \geq 0 \quad (14)$$

Also, in case of the energy Dev to be Negat, the Rev is set as:

$$H_x = g_x^D I_x^D + g_x^D (h_x^- - 1) \Theta_x, \Theta_x < 0 \quad (15)$$

Considering (14)-(15) can be expressed as:

$$H_x = g_x^D I_x^D - C_x \quad (16)$$

where:

$$Z_x = g_x^D (1 - h_x^+) \Theta_x, \Theta_x \geq 0 \quad (17)$$

$$Z_x = -g_x^D (h_x^- - 1) \Theta_x, \Theta_x < 0 \quad (18)$$

In (16) $g_x^D I_x^D$ is the MRev obtained from ETr when Uncer is disregarded.

With Uncer a scenarios set Φ is accounted for WEn and Imbs. The scenario ϕ is weighted with a probability of occurrence η . The η is the same for ϕ .

The Rev over a time horizon is the objective function for the problem and is given as:

$$\sum_{\phi=1}^{N_\phi} \sum_{x=1}^{N_x} \eta_\phi \left(g_{x\phi}^D I_x^D + g_{x\phi}^D h_{x\phi}^+ \Theta_{x\phi}^+ - g_{x\phi}^D h_{x\phi}^- \Theta_{x\phi}^- \right) \quad (19)$$

In (19) $g_{x\phi}^D I_x^D$ is the Rev from the accepted energy at the EPr of EMar closing, the other terms are the penalty for Imb.

The OWBS is given by the maximization of (19) subjected to the constraints as:

$$0 \leq I_x^D \leq I_x^{\max}, \forall x \quad (20)$$

$$\Theta_{x\phi} = \left(I_{x\phi} - I_x^D \right), \forall x, \forall \phi \quad (21)$$

$$\Theta_{x\phi} = \Theta_{x\phi}^+ - \Theta_{x\phi}^-, \forall x, \forall \phi \quad (22)$$

$$0 \leq \Theta_{x\phi}^+ \leq I_{x\phi} d_x, \forall x, \forall \phi \quad (23)$$

In (20), the offers are limited by the technical range of operation, i.e., the installed maximum power in the WEn farm. In (21)-(23) is imposed that $\Theta_{x\phi}^+ = 0$ when $\Theta_{x\phi}^+$ is Negat, $I_{x\phi} < I_x^D$, and is imposed that $\Theta_{x\phi}^- = 0$ when $\Theta_{x\phi}^-$ is Negat, $I_x^D < I_{x\phi}$.

When the system balance (SBal) is Negat, the producer is penalized for the deficit of energy generated (EnGen) below the ETr in the D-AEM, so the term $g_{x\phi}^D h_{x\phi}^+ \Theta_{x\phi}^+$ is

null and the term $g_{x\phi}^D h_{x\phi}^- \Theta_{x\phi}^-$ is subtracted from the Rev in the situation of no Dev, $g_{x\phi}^D I_x^D$.

When the SBal is Posit, the producer is penalized for the EnGen above the ETr in the D-AEM, so the term $g_{x\phi}^D h_{x\phi}^- \Theta_{x\phi}^-$ is null and the term $g_{x\phi}^D h_{x\phi}^+ \Theta_{x\phi}^+$ is added to the Rev in the situation of no Dev.

Notice by the inequality in (9) that for the SBal Posit the added Rev is never greater than the Rev if no Posit Imb happens.

5 Results

The SLPr methodology is presented by a case study composed by two sets of data from the Iberian EMar [25]. The data set, i.e., price scenarios (PSc) includes 10 days of 2013-November and the other one 10 days of 2014-June shown in Fig. 1.

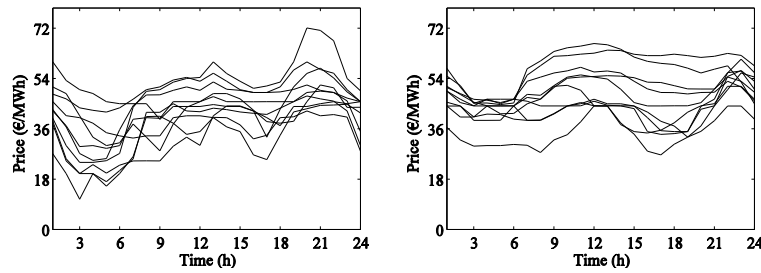


Fig 1. PSc; a) 2013-November, b) 2014-June.

Fig. 1 shows hourly PSc at the closing of the D-AEM and each line is intended to represents a possible PSc.

The 2013 energy produced and 2014 energy produced are shown in Fig. 2.

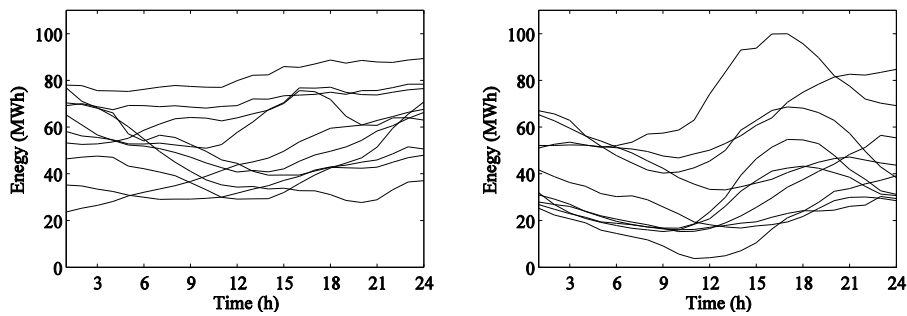


Fig 2. WEn: energy a) 2013-November, b) 2014-June.

The EnGen is found through the total EnGen from the maximum power capacity of wind farm, $I^{\max} = 120MW$.

The SOP matches the total EnGen to the system desires. This is reached by setting the price multipliers (PMul) r_t^+ and r_t^- specified by (9)-(10).

The r_t^+ and r_t^- in 2013 are shown in Fig. 3.

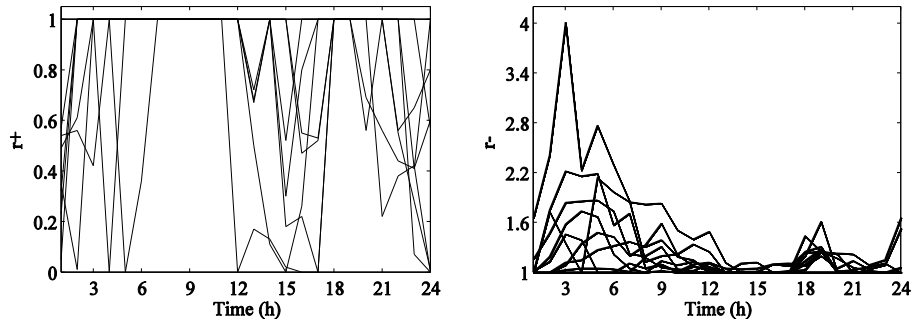


Fig 3. Imb PMul 2013; a) r_t^+ , b) r_t^- .

In 2014 the r_t^+ and r_t^- are shown in Fig. 4.

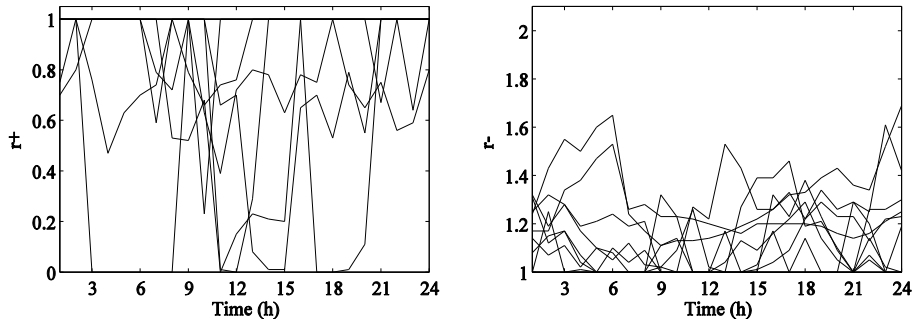


Fig 4. Imb PMul 2014; a) r_t^+ , b) r_t^- .

The optimal energy (OEn) offer that MRev estimated is determined by (19)-(23).

The OEn offer and the estimated hourly revenue (EHRev) are shown in Fig. 5 and in Fig. 6.

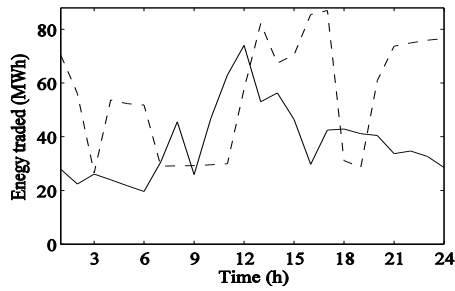


Fig 5. ETr in D-AEM; 2013 dashed-line; 2014 solid line.

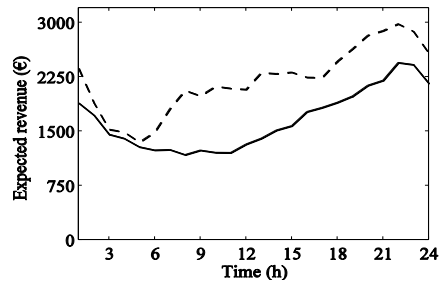


Fig 6. EHRev; 2013 dashed-line; 2014 solid line

For the 24 hours the forecasted Rev in year 2013 is 52,861 € and in year 2014 39,656 €.

The Rev Dev, considering that the 24 periods will be equal in ϕ , is shown in Fig. 7.

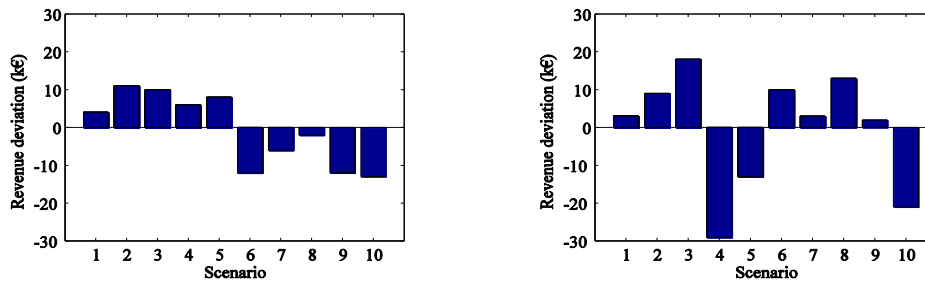


Fig 7. Rev Dev; a) 2013, b) 2014.

The Dev for the worst PSc (Fig. 7) is lower than the EHRev, implying that in the case of the condition over the day matches any one of the PSc, the outcome EHRev would be permanently positive.

6 Conclusion

A SLPr approach for solving the OStr of a wind PPr in a deregulated EMar is handled in this paper. The crucial result is the BStr for a wind PPr facing not only the wind power and EPr Uncers, but also the Imbs.

A SLPr approach is suitable to address OStr, in modeling via scenarios, if the computing resources needed are not excessive for use in a day basis.

The SLPr approach showed to be computationally acceptable, taking into consideration the number of PSc, and periods over the time horizon.

Additionally, the proposed approach is a useful tool for the PPr so as to be applied several times to reconfigured the bids according to short run changes of information.

Hence, the approach has adequacy to be integrated in SGRs in order to act in an enough small time processing, supporting decisions not only for helping bidding, but also for comparison with eventual bilateral contracts in due time.

Acknowledgments.

The work presented in this paper is funded through Portuguese Funds by the Foundation for Science and Technology-FCT for project scope LAETA2015-2020, UID/EMS/50022/2013.

References

1. Tina, G., Gagliano, S., Raiti, S.: Hybrid solar/wind power system probabilistic modelling for long-term performance assessment. *Solar Energy* 80, 578-588 (2006)
2. Energy 2020 - A strategy for competitive, sustainable and secure energy, 2015. [Online]. Available: <http://europa>
3. Ritzenhofen, I., Spinler, S.: Optimal design of feed-in-tariffs to simulate renewable energy investments under regulatory uncertainty – A real options analysis. *Energy Economics* (2015)
4. Wang, T., Gong, Y., Jiang, C.: A review on promoting share of renewable energy by green-trading mechanisms in power system. *Renewable and Sustainable Energy Reviews* 40, 923-929 (2014)
5. Shrestha, G.B., Kokharel, B.K., Lie, T.T., Fleten, S.-E.: Medium term power planning with bilateral contracts. *IEEE Transactions on Power Systems* 20 (2), 627 - 633 (2005)
6. Giannitrapani, A., Paoletti, S., Vicino, A., Zarrilli, D.: Bidding strategies for renewable energy generation with non stationary statistics. *Proc. of 19th International Federation of Automatic Control World Congress* (2014)
7. Notton, G., Diaf, S., Stoyanov, L.: Hybrid photovoltaic/wind energy systems for remote locations. *Energy Procedia* 6, 666-677 (2011)
8. Al Faruque, M.A.: A model-based design of cyber-physical energy systems. *Proc. 19th Asia and South Pacific Design Automation Conference (ASP-DAC)*, 97-104 (2014)
9. Blaabjerg, F., Ionel, D.M.: Renewable Energy Devices and Systems – State-of-the-Art Technology, Research and Development, Challenges and Future Trends. *Electric Power Components and Systems* 43 (12), 1319–1328 (2015)
10. IEEE. Smart Grid: Reinventing the Electric Power System. *IEEE Power and Energy Magazine for Electric Power Professionals*. USA: IEEE Power and Energy Society (2011)
11. Ramos, C., Vale, Z., Faria, L.: Cyber-Physical Intelligence in the Context of Power Systems. *Proc. 3rd Int. Conf. on Future Generation Information Technology*, Volume 7105, 19-29 (2011)
12. Faria, L., Silva, A., Ramos, C., Gomez, L., Vale, Z.: Intelligent Behavior in a Cyber-Ambient Training System for Control Center Operators. *Proc. 16th Int. Conf. on Intelligent System Application to Power Systems*, 1-6 (2011)
13. Lee, E. A., Seshia, S. A.: *Introduction to embedded systems - A cyber-physical systems approach*. Second Edition (2015)
14. *Foundations for Innovation in Cyber-Physical Systems - Workshop Summary Report*. National Institute of Standards and Technology (2013)
15. Vale, Z.: *Intelligent Power Systems*. Wiley Encyclopedia of Computer Science and Engineering. John Wiley & Sons, Inc. (2008)
16. Xie, L., Mo, Y., Sinopoli, B.: False Data Injection Attacks in Electricity Markets. *Proc. First IEEE Smart Grid Communications Conference (SmartGridComm)*, 226-231 (2010)
17. García-González, J., Muela, R.M.R., Santos, L.M., González, A.M.: Stochastic Joint Optimization of Wind Generation and Pumped-Storage Units in an Electricity Market, *IEEE Transactions on Power Systems* 23 (2), 460–468 (2008)

18. García-González, J.: Hedging strategies for wind renewable generation in electricity markets, Proc. IEEE Power and Energy Society General Meeting, Pittsburgh, USA, 2008
19. Angarita, J.M., Usaola, J.G.: Combining hydro-generation and wind energy biddings and operation on electricity spot markets, *Electric Power Systems Research* 77 (5), 393–400 (2007)
20. Bathurst, G.N., Strbac, G.: Value of combining energy storage and wind in short-term energy and balancing markets, *Electric Power Systems Research* 67 (1), 1–8 (2003)
21. Fabbri, A., San Roman, T.G., Abbad, J.R., Mendez Quezada, V.H.: Assessment of the cost associated with wind generation prediction errors in a liberalized electricity market. *IEEE Transactions on Power Systems* 20 (3), 1440–1446 (2005)
22. G. Bathurst, J. Weatherill, G. Strbac, Trading wind generation in short term energy markets. *IEEE Transactions on Power Systems* 17 (3), 782–789 (2002)
23. Pinson, P., Chevallier, C., Kariniotakis, G.: Trading wind generation from short-term probabilistic forecasts of wind power. *IEEE Transactions on Power Systems* 22 (3), 1148–1156 (2007)
24. Morales, J., Conejo, A., Pérez-Ruiz, J.: Short-term trading for a wind power producer. *IEEE Transactions on Power Systems* 25 (1), 554–564 (2010)
25. <http://www.esios.ree.es/web-publica/>