



HAL
open science

Analysis of Standards Towards Simulation-Based Integrated Production Planning

Deokratias Kibira, Sang-Su Choi, Kiwook Jung, Tridip Bardhan

► **To cite this version:**

Deokratias Kibira, Sang-Su Choi, Kiwook Jung, Tridip Bardhan. Analysis of Standards Towards Simulation-Based Integrated Production Planning. IFIP International Conference on Advances in Production Management Systems (APMS), Sep 2015, Tokyo, Japan. pp.39-48, 10.1007/978-3-319-22759-7_5. hal-01431140

HAL Id: hal-01431140

<https://inria.hal.science/hal-01431140>

Submitted on 10 Jan 2017

HAL is a multi-disciplinary open access archive for the deposit and dissemination of scientific research documents, whether they are published or not. The documents may come from teaching and research institutions in France or abroad, or from public or private research centers.

L'archive ouverte pluridisciplinaire **HAL**, est destinée au dépôt et à la diffusion de documents scientifiques de niveau recherche, publiés ou non, émanant des établissements d'enseignement et de recherche français ou étrangers, des laboratoires publics ou privés.



Distributed under a Creative Commons Attribution 4.0 International License

Analysis of standards towards simulation-based integrated production planning

Deogratias Kibira¹, Sang-Su Choi², Kiwook Jung³, Tridip Bardhan¹

¹Department of Industrial and Systems Engineering, Morgan State University
1700 E Cold Spring Ln, Baltimore, MD 21251, USA.

deogratias.kibira@morgan.edu, tridip.bardhan@morgan.edu

²Department of Systems Management Engineering, Sungkyunkwan University, South Korea

³Department of Industrial and Management Engineering, POSTECH, South Korea

caxguru@gmail.com, kiwook@postech.ac.kr

ABSTRACT

Production planning is carried out at the enterprise, operation, and process levels. Although production plans at higher levels constrain those at the lower levels, the processes for generating those plans are typically not well integrated in practice. Because of that, the schedules at lower levels may not accurately reflect what was planned at the higher levels while the plans at the high level may not be based on prevailing conditions at the lower levels. Simulation models that evaluate the performance of a production plan also need to be integrated with production management systems. This paper provides a background to integration problems associated with simulation-based multi-level production planning by exploring current practices, standards, and tools. We lay a foundation for a standards-based simulation for integrated production planning.

Keywords: integrated production planning; simulation; standards

1 Introduction

The objective of production planning (PP) is to decide on product types and quantities to produce during specific future periods to meet demand. PP is typically decomposed into decisions at different levels in the organization [1]. Bitran et al. [2] identified the PP levels as enterprise, operational, and process levels. Enterprise level planning relies on aggregated estimates while lower level planning uses up-to-date, granulated data. Figure 1 illustrates the conceptual view of inputs and outputs for different PP levels. The input data for enterprise planning are customer and forecasted demands, projected capacity, and inventory. The outputs are the details of production release and sales, also called the master production schedule (MPS). Lower level plan outputs are scheduling policy, work in progress levels, cycle times, and dispatching.

The aggregate PP problem can be formulated as a linear mathematical model to determine future production levels, capacity, labor force, and inventory [3]. The enterprise resource planning (ERP) tool determines production resources, financial, and delivery of raw materials to execute the plan. The manufacturing execution system (MES) uses the MPS to provide shop floor production instructions. The outputs of the MES including dispatching rules and procedures are often evaluated by simulation taking into account real-time events such as machine breakdowns and part shortages [1]. This typically results in a more detailed and up-to-date situation analysis.

Clearly, the degree of coordination between enterprise-level PP, lower-level PP, and the integrated simulation models plays an important role in the success of PP. In particular, the prediction of shop floor events and anticipated capacity being fed back to enterprise-level level to update the MPS [4]. PP methods such as CONWIP cannot succeed without feedback of shop floor simulation results to enterprise level planning [5-6]. Moon and Phatak [7] also showed that bi-directional feedback between a stochastic shop floor simulation and ERP improved lead-time accuracy. Kulvatunyou and Wysk [8] demonstrated with a simulation model that decomposition and modular integration of resources, process, and production data led to up-to-date analysis. For these reasons, we propose that simulation-based integrated PP enabling a cyber-physical system approach of combining computational and physical elements to adapt to changing environments be employed. However, there are problems to achieving such integration. This paper provides a background to addressing those problems by reviewing existing methods, PP interface standards, and a sample integration architecture. An extension of the SIMA reference architecture [9] is proposed to define inputs and outputs to activities, and information needs at each PP level.

The rest of the paper is organized as follows. Section two describes the causes of PP and simulation integration problems. Section three discusses a reference architecture that can be adapted for the simulation-based integrated PP to increase accuracy. Section four concludes the paper and discusses future work.

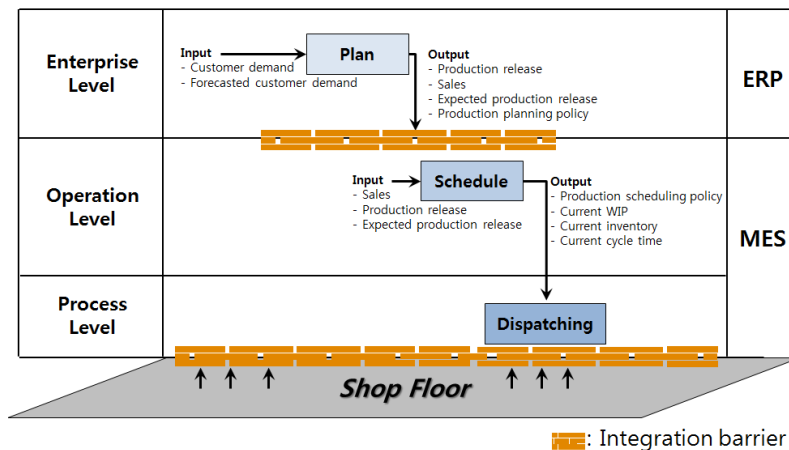


Figure 1. The input and output data between different PP levels.

2 Analyzing problem sources

We describe the PP and simulation integration problems by examining characteristics and the challenges with applying existing standards to the problem.

Temporal characteristics of the problem: The decomposition of the PP problem into enterprise, operational, and process levels is consistent with the ISA-95 CIM (Computer Integrated Manufacturing) standard model. ISA-95 activities are classified into 4 levels, shown in Figure 2. Levels 1 and 2 activities manage manufacturing processes. At level 1, processes are controlled and data is gathered in almost real time (1~20ms). The time-scales at level 2 are hours, minutes, and seconds. At level 3, workflows are managed in days, shifts, hours, and minutes. Level 3 activities interface with the shop floor equipment and machines [10]. The MES plays a role mostly at this level. At level 4, enterprise planning, carried out by ERP, has time-scales of months and weeks [11]. These differences in activity time-scales imply different objectives and plans for each level.

Planning and operation gap: Level 4 plans are supposed to be realized in levels 2 and 3. However, data aggregations at higher levels and unexpected events such as order change and machine breakdowns result in operational level outputs that differ from original high level plans.

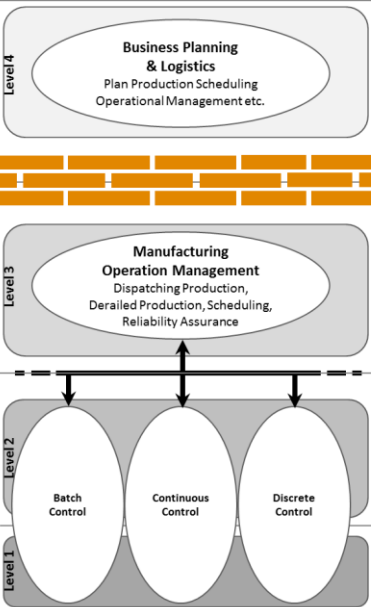
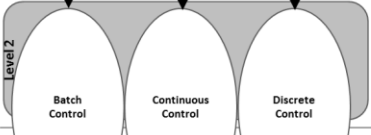

ISA 95 Control Level	Role	System	Functions
Level 4  <p>Business Planning & Logistics Plan Production Scheduling Operational Management etc.</p>	Establishing the basic plant schedule – production, material use, delivery, and Shipping. Determining inventory levels. Time Frame Months, weeks, days	ERP	<ul style="list-style-type: none"> - Product planning - Cost / Pricing management - Project management - Demand forecasting - Manufacturing or service delivery management - Marketing and sales management - Inventory management - Financial management
Level 3 <p>Manufacturing Operation Management Dispatching Production, Derailed Production, Scheduling, Reliability Assurance</p>	Work flow / recipe control to produce the desired end products. Maintaining records and optimizing the production process. Time Frame Days, shifts, hours, minutes, seconds	MES	<ul style="list-style-type: none"> - Resource Allocation and Status - Operations / Detail Scheduling - Dispatching Production Units - Document Control - Data Collection / Acquisition - Labor Management - Quality Management - Process Management - Maintenance Management - Product Tracking and Genealogy - Performance Analysis
Level 2  <p>Batch Control Continuous Control Discrete Control</p>	Monitoring, Supervisory control and automated Control of the production process Time Frame Hours, minutes, seconds, subseconds	Control	
Level 1 	Sensing the production process, manipulating the production process		

Figure 2. ISA-95's hierarchy model and associated systems and functions.

System interface difficulty: Standards are essential for manufacturing data management and to integrate multiple systems. Figure 3 shows examples of standards and systems. Data is collected at levels 1 and 2. The 4th column of Figure 2 lists the functions provided in the systems. ERP for enterprise planning and MES for lower level PP do not interface well especially if provided by different vendors. Because of this, the often-required adjustments to production plans may be difficult to carry out.

Data for simulation: Aggregate PP focuses on maximizing on-time demand satisfaction and minimizing inventory while detailed PP at lower levels focus more on minimizing cycle times, resource utilization, and maximizing bottleneck utilization [1]. As such, simulation objectives are different for each level. The corresponding differences in details, scope, and data complicate the coordination of inputs and outputs with the multi-level simulation models. This problem can be broken down into two aspects: data interoperability and data collection.

An impediment to wide simulation usage is that simulation tools have a very low level of data interoperability among themselves and with other manufacturing applications [12]. Recognizing this problem, the Simulation Interoperability Standards Organization (SISO), in collaboration with NIST, developed the Core Manufacturing Simulation Data (CMSD) [13]. CMSD can facilitate exchanging data across different simulation tools used in the supply chain. But it does not support integrating simulations along a vertical scale, i.e., across hierarchical levels. Its usefulness for multi-level PP simulation is, therefore, limited.

Figure 3 shows other exemplar standards against the PP level. The OAGIS standard, from the Open Applications Group, establishes integration scenarios for a set of applications including ERP, MES, and Capacity analysis [14]. OAGIS defines business messages that allow application-to-application and business-to-business integration. As such, the main emphasis for OAGIS is at the enterprise level while the ISA-95 is more emphasized at the operations levels. Therefore, there are gaps in these standards for modeling the exchange of data between the different PP systems, and between PP and simulation tools.

ISA 95 Control Level	System	Required standards for production planning (exemplary)	Required standards for simulation automation (exemplary)
Level 4	ERP	OAGIS	
Level 3	MES	ISA 95	CMSD
Level 2	Control	MTConnect / OPC UA	
Level 1			

Figure 3. Systems and data standards for simulation data integration.

The activity that precedes data processing and modeling for simulation is data collection. Jung [15] categorized data collection methods into automated, semi-automated, and manual methods. For automated data gathering, communication interfaces based on standard protocols have been developed. MTConnect [16, 17] has recently emerged as a standard for automated, real-time data gathering from equipment. The current scope is limited to machine tools. An enhancement to cover other kinds of equipment is necessary.

OLE for Process Control - Unified Architecture (OPC-UA) (IEC62541) [18] is a communication protocol for interoperability from the OPC Foundation. MTConnect and OPC-UA support interfaces to levels 1 and 2 (Figure 3). MTConnect and OPC-UA have collaborated to produce a companion specification called MTConnect-OPC UA to ensure interoperability and consistency [19]. Other OPC UA companion specifications exist that may support data collection from other kinds of equipment.

In order to model interdependencies between PP functions and simulation objectives, a reference model is needed. A reference model is an abstract framework consisting of an interlinked set of clearly defined concepts for unambiguous communication [20]. In the next section, we use the System Integration for Manufacturing Applications (SIMA) Reference Architecture to describe entities and relationships involved in the multi-level PP. We propose to extend this model to develop a unified PP function that is enabled by a multi-level simulation.

3 Integrated production planning based on simulation

This section describes the proposed feedback control mechanism and an introduction to the SIMA reference architecture and proposed enhancements.

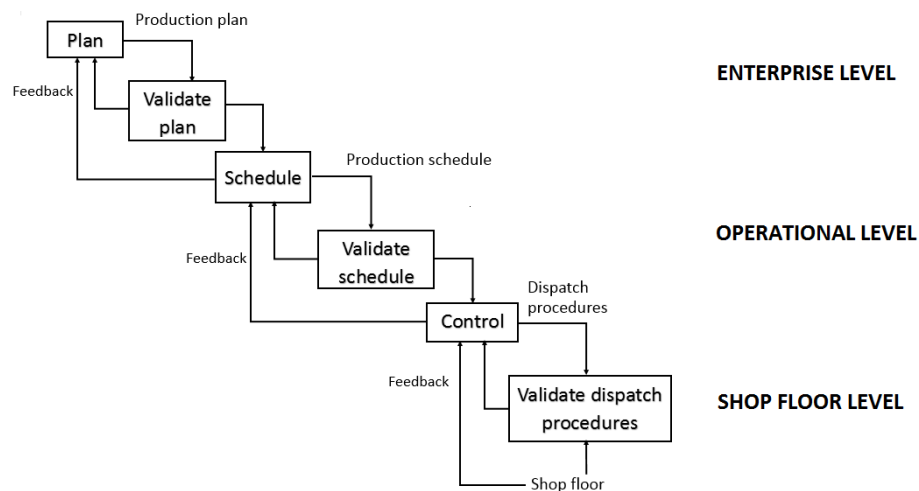


Figure 4: Feedback mechanism for simulation-based integrated production planning

Feedback control mechanism based on simulation

The hierarchical decision system relies on a top-to-down approach where decisions at each level being passed down to the level below for execution. The feedback from a lower level to a higher level is used to modify the higher decisions so as to enable feasibility at the lower level. While research in feedback mechanisms including use of simulation has been reported, it has mainly been limited to two levels [21]. Secondly, the results have not included practical implications of implementation by use of standards and protocols. In the proposed simulation enhanced feedback, each level within the PP hierarchy has two feedback inputs, as shown in Figure 4. First, the outer loop, which represents the traditional method of feedback where upper plans are revised to enable feasibility at lower level. Second, the inner loop that provides the output of simulation as a consideration for PP revision. We assume that lower levels have models that can better process more detailed information. From the shop floor, for example, data is used along with simulation to predict events as well as capacity and project inventory levels. This information along with the schedules passed from the scheduler is used to determine work dispatch procedures to ensure optimized production. These new procedures have to be aligned with schedules. The same procedure is used when revising the production plan at the enterprise level. The simulation models need not be integrated or run concurrently, but during usual events that necessitate production plans revision. In the next subsection, we introduce and discuss the SIMA reference architecture with which the feedback control mechanism can be integrated.

SIMA Reference Architecture

The System Integration for Manufacturing Applications (SIMA) Reference Architecture focuses on standards and technologies to integrate manufacturing software applications in design, fabrication, and assembly of discrete manufactured parts. It was developed at NIST using IDEF0 diagrams [22]. In IDEF0, the activities, shown as boxes, represent functions and operations. The fundamental objects of an IDEF0 model are activities, information flows and resources that include controls and mechanisms. Inputs are arrows into the left side of the activity box. Outputs are arrows exiting the right side of the activity box. Controls are arrows into the top of the activity box, while from the bottom, are the mechanisms or means by which activities are performed. A set of activities, information flows and resources are defined in multi-level activity models that describe the engineering and operational aspects of manufacturing a product from conception through production. The activity model provides a frame of reference for identification and standardization of interfaces between activities through information flows [9].

Within SIMA, the activity model for developing the production plan and coordinating product orders with shop floor activities is the “Develop Production Plan” activity model shown in Figure 5. Designated as A41 in the reference architecture, this activity model is relevant to developing the integrated PP system. It has four sub-activities,

briefed as follows. A411 “Create Master Schedule” determines product quantities to be produced during a future planning period, given customer orders or forecasts. Customer orders are defined by product type, quantities, and due dates. Considering anticipated capacity and capacity restrictions, this sub-activity develops the MPS. This activity takes place at Level 4 in the ISA-95 Control Level. The OAGIS standard can support this sub-activity. A412 “Define Capacity Requirements” determines the long term capacity requirements based on the MPS, capacity projections and possible adjustments. A413 “Create Production Orders” generates production orders in quantities determined by the MPS and resource requirements. These two sub-activities correspond to Level 3 in the ISA-95 standard. The MES and CMSD standards are applicable. Lastly, A414 “Monitor Production Orders” monitors the status of production orders from the shop floor. Thus, it requires information to be collected from Levels 2 and 1 and fed into Level 3 for aggregation. Level 2 and 1 information may be supported by the MTConnect and OPC-UA communication protocols. In the IDEF0 diagram, activities are interconnected with information flows. This connectivity between activities across control levels identifies the integrated PP requirements.

The proposal is to make the feedback mechanism defined in Figure 4 as part of the SIMA architecture. The additions are the validation activities to be performed using simulation. Therefore, interfaces need to be defined to integrate simulations, manufacturing applications, and databases. Extensions to the existing CMSD specification will be investigated to support such vertical integration.

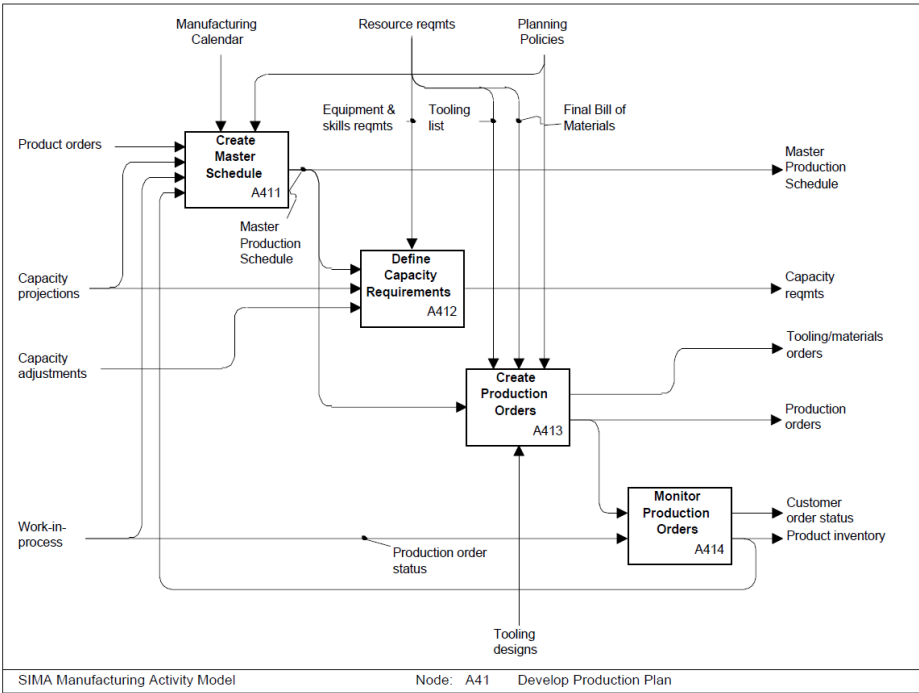


Figure 5. SIMA Manufacturing Activity Model: A41 Develop Production Plan.

Driven by simulation validation objectives at each level, the new proposed activities can be defined as follows:

Simulate production plan

Inputs: current work-in-progress and inventory, master production schedule, cycle time, takt time, required inventory levels, expected capacity variation,

Outputs: production levels, sales, finished products inventory, backlogs, fulfilment rate

Control: strategic policy to control demand, inventory, capacity, variability, demand satisfaction

Mechanism: production plan simulation model

Simulate schedule

Inputs: production order sequence or schedule, lead times, due dates,

Outputs: production order release, production order completion, work in progress levels, number of orders filled, number of orders missed

Control: resource (people and machine) levels, batch size, target performance levels such as resource capacity utilization levels, work-in-progress level, and safety stock

Mechanism: scheduling simulation model

Simulate dispatch rules and procedures

Inputs: job sequence,

Outputs: resource utilization, throughput rate, actual cycle time,

Control: dispatching rules, resource production rates, target utilization level, upper and lower stock limits,

Mechanism: real-time control simulation model

4 Conclusion and future work

This paper has pointed out the need for increased concurrency among production planning at different hierarchical levels in a manufacturing organization. This paper first described the PP planning function at different hierarchical levels followed by an overview of PP integration challenges. Simulation based prediction of shop floor events, inventory levels, and capacity by using real-time events can reduce the potential infeasibility and accuracy of the multi-level PP process. However, these simulations also need to be integrated with production management systems. To that end, exemplar standards and their limitations to integrating simulations and production management systems have been discussed; and a framework based on the SIMA reference activity model to extend those standards have been proposed.

While automated tools with tasks from data collection, analytics, and scheduling have been developed, employing a cyber-physical approach that integrates these methods and standards at different levels with simulation assisted human decision making will result in a more accurately responsive PP system. Future work will include the description of data requirements for inputs and outputs at multiple levels.

Within the SIMA architecture, the additional activities, i.e., simulate to validate production plan, simulation to validate schedule, and simulate to validate dispatch and production control procedures will be validated against the specific needs and environments of individual manufacturing organizations.

Disclaimer

This effort has been sponsored in part under the cooperative agreement No. 70NANB13H153 between NIST and Morgan State University. The work described was funded by the United States Government and is not subject to copyright.

5 References

1. Cai, Y., Kutanoglu, E., & Hasenbein, J. (2011). Production Planning and Scheduling: Interaction and Coordination, K.G. Kempf et al. (eds.), *Planning Production and Inventories in the Extended Enterprise*, Intl Series in Operations Research & Management Science, 152, 15-42.
2. Bitran, G. R. & Tirupati, D. (1989). Hierarchical Production Planning, *MIT Sloan School Working Paper #3017-89-MS*.
3. Hennet, J.-C. (1999). From Aggregate Plan to Lot-Sizing in Multi-level Production Planning, *Modeling Mnfg Systems*, Brandimarte, A.Villa Eds, Springer, 5-23.
4. Albey, E., & Bilge, U. A. (2011). A hierarchical approach to FMS planning and control with simulation-based capacity anticipation, *International Journal of Production Research*, 49(11), 3319–3342.
5. Spearman, M.L., Woodruff, D.L., & Hopp, W.J. (1990). CONWIP: a pull alternative to Kanban, *International Journal of Production Research*, 28(5), 879-894.
6. Venkateswaran, J., & Son, Y.-J. (2005). Hybrid system dynamic - discrete event simulation-based architecture for hierarchical production planning, *International Journal of Production Research*, 43(20), 4397-4429.
7. Moon, Y. and Phatak, D. (2005). Enhancing ERP system's functionality with discrete event simulation, *Industrial management & data systems*, 105(9), 1206-1224
8. Kulvatunyou, B., & Wysk, R.A. (2001). Computer-aided manufacturing simulation (CAMS) generation for interactive analysis: concepts, techniques, and issues, *Proc. of the 33rd Winter Simulation Conference*, 968-976.
9. Barkmeyer, E., Christopher, N., Feng, S., Fowler, J.E., Frechette, S.P., Jones, A., Jurrens, K., Lyons, K., McLean, C.R., Pratt, M., Scott, H.A., Senehi, M.K., Sri-ram, R.D., Wallace, E.K. (1987). SIMA reference architecture: Part 1: Activity models. *National Institute of Standards and Technology Internal Report (5939)*.
10. ANSI/ISA 95. (2005). *ANSI/ISA-95.00.03-2005 - Enterprise-Control System Integration: Part 3: Activity Models of Manufacturing Operations Management*.
11. Scholten, B. (2007). The road to integration: A guide to applying the ISA-95 standard in manufacturing. ISA.

12. Leong, S., Lee, Y. T., & Riddick, F. A. (2006). Core Manufacturing Simulation Data Information Model for Manufacturing Applications. In *Proceedings of the 2006 Fall Simulation Interoperability Workshop*, Orlando, FL.
13. Simulation Interoperability Standards Organization (SISO). Core Manufacturing Simulation Data (CMSD) Standard.
<http://www.sisostds.org/StandardsActivities/DevelopmentGroups/CMSDPDGCoreManufacturingSimulationData.aspx>. Viewed site on: 12/6/2014
14. OAGi. *Open Application Group's Integration Specification (OASIS) 10.0*.
<http://www.oagi.org/dnn2/DownloadsandResources/OAGIS100PublicDownload.aspx>. Retrieved on 11/23/2014.
15. Jung, D. (2013). *MES Component Technology (For Smart Manufacturing)*.
16. MTConnect Institute, <http://www.mtconnect.org>
17. Vijayaraghavan, A., Sobel, W., Fox, A., Dornfield, D., & Warndorf, P. (2008). *Improving machine tool interoperability using standardized interface protocols: MTConnect*, Laboratory for Manufacturing and Sustainability.
18. OPC Foundation. <https://opcfoundation.org/about/opc-technologies/opc-ua/>
19. MTConnect Institute, *MTConnect – OPC-UA Companion Specification*. (2013).
<http://www.mtconnect.org/recent-news/mtconnect-opc-ua-companion-specification-release-candidate-is-available.aspx>.
20. Scheer, A. W., Jost, W., & Guengoez, O., (2007). A reference model for industrial enterprises, *Reference Modeling for Business Systems Analysis*, 167-181.
21. White, L.R. (2012). A Hierarchical Production Planning System Simulator, *International Journal of Simulation Modeling*, 2012, 40-57
22. IEEE 1320.1 (1998). IEEE Functional Modeling Language – Syntax and Semantics for IDEF0, *Intl. Society of Electrical and Electronics Engineers*, New York.