



HAL
open science

A level-set based image assimilation method: Potential applications for predicting the movement of oil spills

Long Li, François-Xavier Le Dimet, Jianwei Ma, Arthur Vidard

► **To cite this version:**

Long Li, François-Xavier Le Dimet, Jianwei Ma, Arthur Vidard. A level-set based image assimilation method: Potential applications for predicting the movement of oil spills. *IEEE Transactions on Geoscience and Remote Sensing*, 2017, 55 (11), pp.6330-6343. 10.1109/TGRS.2017.2726013. hal-01411878

HAL Id: hal-01411878

<https://inria.hal.science/hal-01411878v1>

Submitted on 7 Dec 2016

HAL is a multi-disciplinary open access archive for the deposit and dissemination of scientific research documents, whether they are published or not. The documents may come from teaching and research institutions in France or abroad, or from public or private research centers.

L'archive ouverte pluridisciplinaire **HAL**, est destinée au dépôt et à la diffusion de documents scientifiques de niveau recherche, publiés ou non, émanant des établissements d'enseignement et de recherche français ou étrangers, des laboratoires publics ou privés.

A level-set based image assimilation method: applications for predicting the movement of oil spills

Long Li, François-Xavier Le Dimet, Jianwei Ma, and Arthur Vidard

Abstract

In this paper, we present a novel method for assimilating geometric information from observed images. Image assimilation technology fully utilizes structural information from the dynamics of the images to retrieve the state of a system, and thus to better predict its evolution. Additionally, the level set method, which describes the evolution of the geometry shapes of a given system, is taken into account to include the dynamics of the images. This method differs from previous methods of image assimilation in that it takes advantage of Lagrangian information in an Eulerian numerical framework. In our numerical experiments, we apply this technique of image assimilation based on the level set method to an oil pollution problem, to calibrate the initial contours of oil pollutants and to identify diffusion coefficients of the model. Topological merging and breaking of oil slicks are well defined and easily performed by this proposed approach. The results show good agreement between simulated values and observed images.

Index Terms

Image assimilation, Structural information, Level set method, Oil spills.

I. INTRODUCTION

OCEANIC oil spills can have a deep impact on both the biology of the ocean as well as the environment on nearby shores. Because of this, it is extremely important to be able to predict the evolution of an oil leak not only to optimize rescue operations both on the sea and on the ground but also to efficiently guide vessels pumping oil on the ocean's surface. Currently, the movement and evolutions of these oil slicks are simulated by many disparate mathematical models. These models vary in their characteristics, for instance some of them makes use of an Eulerian method while others uses a Lagrangian approach to solve the advection-diffusion equation.

Although the equations governing geophysical fluids are well known, the use of a model to predict oil spill movement requires knowledge of the spill's initial condition, boundary condition and its own model parameters. Without an accurate knowledge of these data, the model cannot provide quality forecast, because these systems are highly sensitive to small perturbations. Therefore it presents an important scientific challenge. Indeed to generate accurate predictions, one has to acquire several distinct data sets, heterogeneous in their nature, quality and density. Variational data assimilation (VDA) is a class of techniques that combines all available heterogeneous information (i.e., mathematical models based on physical laws, observations and *a priori* knowledge) in an optimality system to retrieve the state of a system [1], [2]. VDA techniques are widely used in operational meteorology for instance.

Image assimilation for pollution can build over pas experience with more general geophysical applications. Indeed over the past several decades, a large number of satellites have orbited and observed the Earth, recording a great deal of information.

L. Li and J. Ma are with the Department of Mathematics, Harbin Institute of Technology, Harbin 150001, China (e-mail: lilong1991@126.com; jma@hit.edu.cn).

F. X. Le Dimet and A. Vidard are with Université Grenoble-Alpes and INRIA, Laboratoire Jean-Kuntzmann, 38041 Grenoble CEDEX 9, France (e-mail: fxld@yahoo.com; Arthur.Vidard@inria.fr).

33 This information is possibly recorded in the form of pixels representing static images or sequences of such images. For example,
34 these images record evolutions of large weather bodies, such as hurricanes, which can travel great distances and cause large
35 amounts of damages. It is therefore vital to couple these images with numerical models to be able to predict the evolution of
36 events.

37 First, it was necessary to define what is recorded in these images. It is clear that a large part of the dynamical information
38 is contained in the discontinuities or edges of the images, such as fronts, vortexes, and filaments. These discrepancies are
39 linked to physical properties within a threshold, such as the condensation of water vapor, or the salinity level in an estuary. It
40 is important to use images to reveal the dynamics of a system and identify the underlying physics. For example, in the field
41 of meteorology, it is common to consider small cumulus clouds, mainly at tropical latitudes, as Lagrangian tracers, and to
42 use estimates of their drift rates to in turn estimate wind speed. This can actually be misleading, for instance “Lenticularis
43 Clouds” (as shown in Fig. 1) which are common on mountains, characteristically occur in strong winds, but look almost steady
44 state because they are created by a change of phase in the water particles. Therefore if the drift of these clouds were used
45 as Lagrangian markers to evaluate winds, the results would be in full disagreement with the true situation. Before coupling
46 images and numerical models, it is necessary to identify what physical properties are produced within the images and to ensure
47 that they are included in the numerical model.

48 Second, it was necessary to mathematically define the images in order to make them compatible with the physical model.
49 This task has two constraints:

- 50 1) The discretized images must be compatible with the discretization of the model. In the process of data assimilation, one
51 should compare recorded images with artificial images created through the solution of the numerical model. Therefore,
52 we must construct mappings from the model toward the images.
- 53 2) To extract information from the evolutions of these images, one needs to include information about the system’s dynamics.

54 In recent years, several methods of assimilation making full use of structural information contained within images have
55 been proposed. These methods can be divided into two basic categories. The first method estimates motion velocity fields by
56 assimilating pseudo-observations of velocity fields produced from image sequences [3], [4]. The drawback to this approach is
57 that it only takes into account very little physical information about the underlying processes controlling features in the image.
58 The second method directly assimilates data from an image into a dynamic numerical model in a process called direct image
59 assimilation (DIA). In DIA, image’s pixels can be assimilated as a tracer concentration measurement [5], alternatively, the
60 structural information can be extracted from the image for instance by a multiscale sparse transform [6]–[8], and assimilated
61 through a model-to-structure operator [9]–[12].

62 Going back to the specific topic of this paper, it is well established that geometry is an important aspect of prediction
63 models because it can be used to identify polluted areas. This geometry has both a Lagrangian character because the pollution
64 spot is advected with the flow and an Eulerian character because the proper physics of the pollutant is taken into account and
65 interact with the environment. The geometry of an oil slick can be added to state variables of the model (including velocity,
66 sea surface temperature, and elevation of the surface) as well as the concentration of oil. However, images of the ocean’s
67 surface can often be obfuscated (by a cloud for instance), in that case one would need to employ an inpainting method to
68 reconstruct the shape of oil slick. The geometry of oil slicks is complex. For instance a unique source slick can be divided
69 into several slicks, due to the effects of wind and local turbulence on both the atmosphere and the ocean. Lagrangian methods,
70 which define an individual interface as an ensemble of particles following their own trajectories, do not adequately describe the
71 complex topology of many oil slicks. Currently, the level set method is more suitable for this purpose, as it uses Lagrangian



Fig. 1: Lenticular clouds image of Eulerian type (Photo by Dahlia Rudolph at Mt. Rainer, October 5, 2011).

72 information within an Eulerian numerical framework. With this method, topological merging and breaking are well defined
 73 and easily performed. The level set method was introduced by Osher and Sethian [13] for the purposes of computing and
 74 analyzing the motion of an interface in two or three dimensions. Since then, the level set method has been successfully used
 75 to implicitly track moving interfaces and automatically detect changes in topology [13]–[17].

76 In this paper, we attempt to use the level set method to assimilate recorded images. To study the feasibility of this method,
 77 we have chosen to model oil pollution in the ocean. This is an ideal site of study because, to a first order, oil remains on
 78 the surface of the ocean, and thus a 2D model can be used to model oil spots. For other oceanographic or meteorological
 79 applications, what is seen is the integral of the concentration of the contaminant and a 3D information will be necessary.

80 The paper is organized as follows. Section 2 describes the theory behind the method, including the application of a
 81 conventional formulation of variational data assimilation to a pollution transport problem, as well as the level set method
 82 and the framework of the level-set based DIA method. Section 3 details our use of the proposed method to address a global
 83 oil spill problem, including the details of our numerical implementation and results. Finally, Section 4 summarizes the main
 84 results and outlines possible directions of future research.

85 II. THEORY

86 Since the aim of this paper is to combine variational data assimilation and level set methods, both are presented separately
 87 in the first two parts of this section. The last part proposes a combined approach tailored for oil spill monitoring.

88 A. Formulation of VDA to address a pollution transport problem

89 As mentioned in the introduction, VDA is a class of techniques that combines the mathematical information provided by
 90 equations with the physical information yielded by observational data in an optimal way to retrieve the state of a system. To
 91 use a VDA method for solving a pollution transport problem, the following components are required [18], [19]:

92 **A model** describing the evolution of the state variable X , which governs flow, and of the concentration C of a given
 93 contaminant which is defined as:

$$\left\{ \begin{array}{l} \frac{dX}{dt} = \mathcal{F}(X, V), \quad t \in [t_0, t_f] \\ X(t_0) = U, \\ \frac{dC}{dt} = \mathcal{G}(X, C, Z), \quad t \in [t_0, t_f] \\ C(t_0) = W. \end{array} \right. \quad (1)$$

94 **A set of control variables:** U, V, W, Z . U, W represent the initial conditions, and V, Z are parameters of the models.

95 **A set of observations** $X_{obs}, C_{obs} \in \mathcal{O}_{obs}$. For the sake of simplicity, we will assume that our observations are continuous
 96 in time. They can be obtained by physical measurements of the system state. However, these observations typically comprise
 97 partial or indirect measurements of the state variables. For example, The observation space \mathcal{O} is not necessarily the same as
 98 the state space \mathcal{X} , and the observation operator $\mathcal{H}(\cdot)$ is defined as the mapping operator from space \mathcal{X} onto space \mathcal{O} . Similarly,
 99 the operator of observation $\mathcal{D}(\cdot)$ maps the space of the concentration variable \mathcal{C} onto the other observation space. Note that in
 100 the specific case of image observation, $\mathcal{H}(\cdot)$ and $\mathcal{D}(\cdot)$ may include structure extraction operators and become what is called
 101 model-to-structure operator in the introduction.

102 **Background estimations** U^b, V^b, W^b, Z^b of the initial states of model parameters U, V, W, Z . For meteorological
 103 applications, this background estimation can be deduced from previous forecasts.

104 **Statistical information.** Some estimates of the statistics of errors take the form of a covariance matrix, as with the error
 105 covariance matrices Q_X, Q_C of the observation error and the covariance matrices B_U, B_V, B_W, B_Z of the background
 106 estimation.

107 **A cost function, J .** The cost function contains two terms: the first one, J^o , measures the discrepancy between observations
 108 and the solution of the model associated with U, V, W, Z . The second term, J^b , is the background term, which requires the
 109 solution to be located in the vicinity of U^b, V^b, W^b, Z^b . This term can be referred to as the Tikhonov regularization, which
 110 is applied to remedy ill-posed inverse problems [20]. The cost function to be minimized is defined in the continuous case as:

$$J(U, V, W, Z) = J^o + J^b, \quad (2)$$

$$J^o = \frac{1}{2} \int_{t_0}^{t_f} \|\mathcal{H}(X, t) - X_{obs}(t)\|_{Q_X^{-1}}^2 dt + \frac{1}{2} \int_{t_0}^{t_f} \|\mathcal{D}(C, t) - C_{obs}(t)\|_{Q_C^{-1}}^2 dt, \quad (3)$$

$$J^b = \frac{1}{2} \|U - U^b\|_{B_U^{-1}}^2 + \frac{1}{2} \|V - V^b\|_{B_V^{-1}}^2 + \frac{1}{2} \|W - W^b\|_{B_W^{-1}}^2 + \frac{1}{2} \|Z - Z^b\|_{B_Z^{-1}}^2, \quad (4)$$

113 where the unknown parameters V, Z are space-dependent control variables. The norm takes the form of $\|X\|_M^2 = \langle MX, X \rangle$,
 114 where $\langle \cdot, \cdot \rangle$ is an inner product operator in Hilbert space.

115 Variational data assimilation defines the optimal initial conditions U^a, W^a and model parameters V^a, Z^a which best fit
 116 observations acquired over the time range $[t_0, t_f]$. To minimize the equation (2), A necessary condition for this optimality is
 117 expressed by the Lagrange-Euler equation, which requests the gradient of J with respect to U, V, W, Z to be equal to 0.
 118 However, evaluating this condition (*i.e.* computing ∇J) is made difficult by the facts that J can be an implicit function of
 119 these variables and that the size of the problem can be large. Therefore, during the process of variational data assimilation,
 120 ∇J is often computed using the so-called adjoint model:

$$\left\{ \begin{array}{l} \frac{dP}{dt} + \left[\frac{\partial \mathcal{F}}{\partial X} \right]^* P + \left[\frac{\partial \mathcal{G}}{\partial X} \right]^* R = \left[\frac{\partial \mathcal{H}}{\partial X} \right]^* Q_X^{-1} (\mathcal{H}(X) - X_{obs}), \quad t \in [t_0, t_f] \\ P(t_f) = 0, \\ \frac{dR}{dt} + \left[\frac{\partial \mathcal{G}}{\partial C} \right]^* R = \left[\frac{\partial \mathcal{D}}{\partial C} \right]^* Q_C^{-1} (\mathcal{D}(C) - C_{obs}), \quad t \in [t_0, t_f] \\ R(t_f) = 0, \end{array} \right. \quad (5)$$

121 where $*$ denotes the transpose, and P, R represent the so-called adjoint variables. The gradient of the cost function with

122 respect to these control variables is then given by the following equation:

$$\begin{pmatrix} \nabla J(U) \\ \nabla J(V) \\ \nabla J(W) \\ \nabla J(Z) \end{pmatrix} = \begin{pmatrix} -P(t_0) + B_U^{-1}(U - U^b) \\ -\int_{t_0}^{t_f} [\frac{\partial \mathcal{F}}{\partial V}]^* P dt + B_V^{-1}(V - V^b) \\ -R(t_0) + B_W^{-1}(W - W^b) \\ -\int_{t_0}^{t_f} [\frac{\partial \mathcal{G}}{\partial Z}]^* R dt + B_Z^{-1}(Z - Z^b) \end{pmatrix}. \quad (6)$$

123 Finally, U^a , V^a , W^a , Z^a are determined by running a descent-type optimization algorithm of the Newton-type or L-BFGS
124 variety [21].

125 B. Basic level set method

126 Mathematically, a given shape (e.g., an oil slick) can be represented by a subdomain $\Omega(t) \subset R^d$. Let to define the boundary
127 $\partial\Omega(t)$ as the zero level set of a mapping $\phi : R^d \rightarrow R$:

$$\forall \mathbf{x} \in R^d, \quad \begin{cases} \phi(\mathbf{x}) < 0, & \mathbf{x} \in \Omega \\ \phi(\mathbf{x}) = 0, & \mathbf{x} \in \partial\Omega \\ \phi(\mathbf{x}) > 0, & \mathbf{x} \notin \bar{\Omega}. \end{cases} \quad (7)$$

128 The function $\phi(t, \mathbf{x})$ could be the signed distance from (t, \mathbf{x}) to $\partial\Omega(t, \mathbf{x})$. It defines the evolution of the shape whose movement
129 is governed by some velocity field $\vec{V}(t, \mathbf{x}) : R^d \rightarrow R^d$. The motion of $\Omega(t, \mathbf{x})$ follows the advection equation:

$$\frac{\partial \phi}{\partial t}(t, \mathbf{x}) + \vec{V}(t, \mathbf{x}) \cdot \nabla \phi(t, \mathbf{x}) = 0, \quad \text{on } [t_0, t_f] \times R^d. \quad (8)$$

130 In fact, the motion of $\Omega(t, \mathbf{x})$ depends only on $v(t, \mathbf{x})$, the component of $\vec{V}(t, \mathbf{x})$ that is normal to the boundary of $\Omega(t, \mathbf{x})$.
131 Therefore, the motion of the boundary verifies the Hamilton-Jacobi equation:

$$\frac{\partial \phi}{\partial t}(t, \mathbf{x}) + v(t, \mathbf{x}) \|\nabla \phi(t, \mathbf{x})\| = 0, \quad \text{on } [t_0, t_f] \times R^d. \quad (9)$$

132 for which we need to provide an initial condition:

$$\phi(t_0, \mathbf{x}) = \phi_0(\mathbf{x}). \quad (10)$$

133 A more general form of this equation will be introduced in Section II-C2. However, during the evolution of the level set
134 equation, the function $\phi(t)$ can become very flat or very steep, both of which are undesirable effects that can lead to high
135 numerical errors either in the reconstruction of the zero level set or elsewhere in the numerical schemes. An optimal control
136 based approach of this important reinitialization aspect is discussed in Appendix B.

137 C. Level-set based direct image assimilation

138 1) *Edge capturing and image observation operators*: For considering the problem of pollution within a fluid, the variable Ω
139 can be used to represent one or more patches of the pollutant. For adapting our theoretical methodology to analyze pollution,
140 we express the size of the visible pollutant spot in terms of the pollutant's concentration, in which case Ω and the threshold
141 function $\theta(\cdot)$ are defined as:

$$\Omega(t, \mathbf{x}) = \{\mathbf{x}(t) \in \tilde{\Omega} | C(t, \mathbf{x}) \geq \epsilon\}, \quad (11)$$

$$\theta(\phi_{obs}(t)) = \begin{cases} \phi_{obs}(t), & C(t, \mathbf{x}) \geq \epsilon \\ 0, & C(t, \mathbf{x}) < \epsilon \end{cases} \quad (12)$$

142 where C is the concentration of the pollutant, $\tilde{\Omega} \subset R^2$ is the domain taken into account, ϕ_{obs} is the observation image and ϵ
143 represents the concentration threshold above which the spots of pollutant are visible.

144 In this paper, we use the wavelet modulus maximum method [22]–[25] to exploit image edge detection after undergoing
145 thresholding. The result obtained after edge detection is expressed as $\mathcal{W}(\theta(\phi_{obs}))$, from which we can distinguish the inside
146 and outside edges clearly. Some edge detection methods based on wavelet can refer to [26]–[28]. Following this procedure,
147 we apply an edge-based signum operator $\mathcal{H}_{\mathcal{W} \rightarrow \mathcal{S}}(\cdot)$ to the edge-detected images $\mathcal{W}(\theta(\phi_{obs}))$. The procedure is as follows:

$$\mathcal{H}_{\mathcal{O} \rightarrow \mathcal{S}}(\phi_{obs}) = \mathcal{H}_{\mathcal{W} \rightarrow \mathcal{S}}(\mathcal{W}(\theta(\phi_{obs}))) = \begin{cases} -1, & \mathbf{x} \in \Omega \\ 0, & \mathbf{x} \in \partial\Omega \\ 1, & \mathbf{x} \in \tilde{\Omega} \setminus \bar{\Omega} \end{cases} \quad (13)$$

148 where $\mathcal{H}_{\mathcal{O} \rightarrow \mathcal{S}}(\cdot)$ is the image-to-structure operator, and the structure image is expressed as $\phi^{\mathcal{S}}(t) = \mathcal{H}_{\mathcal{O} \rightarrow \mathcal{S}}(\phi_{obs}(t))$. This
149 construction procedure is presented in Fig. 4a-4d. Additionally, we constructed another adapted observation operator, called
150 model-to-structure operator. This operator maps the signed distance function toward the signed function, which links variables
151 of the level set equation with the structural information of images. This model-to-structure operator is defined as:

$$\mathcal{H}_{\phi \rightarrow \mathcal{S}}(\phi) = \begin{cases} -1, & \phi < 0 \\ 0, & \phi = 0 \\ 1, & \phi > 0 \end{cases} \quad (14)$$

152 This procedure is shown in Fig. 4e-4f.

153 2) *General level set model*: In order to apply the model-to-structure operator one has to know the temporal evolution of
154 the edge mapping ϕ . This can be obtain by application of level set techniques. In general, the motion of the interface $\partial\Omega(t)$
155 is analyzed by convecting the level set function $\phi(t, x, y)$ with the external velocity field $\vec{V} = (u, v)$ and diffusing along both
156 the normal direction by a constant value, a , as well as proportionally to the mean curvature, κ . This elementary equation can
157 be expressed as a fully nonlinear second-order partial differential equations:

$$\begin{cases} \frac{\partial \phi}{\partial t} + \vec{V} \cdot \nabla \phi + a \|\nabla \phi\| - \sigma \kappa \|\nabla \phi\| = 0, & \text{on } [t_0, t_f] \times \tilde{\Omega} \\ \phi(t_0) = \phi_0, \end{cases} \quad (15)$$

158

$$\kappa = \text{div} \left(\frac{\nabla \phi}{\|\nabla \phi\|} \right) = \frac{\left(\frac{\partial \phi}{\partial x}\right)^2 \frac{\partial^2 \phi}{\partial y^2} - 2 \frac{\partial \phi}{\partial x} \frac{\partial \phi}{\partial y} \frac{\partial^2 \phi}{\partial x \partial y} + \left(\frac{\partial \phi}{\partial y}\right)^2 \frac{\partial^2 \phi}{\partial x^2}}{\|\nabla \phi\|^3}. \quad (16)$$

159 If the term contained curvature σ is present, closed curves of arbitrary shape will collapse to a circle and then disappear. Unlike
160 the curvature, as it constantly evolves under a , a relatively closed smooth curve will contain sharp edges and the topological
161 structures of the curve may change. In practical cases, the values of the diffusion coefficients σ , a depend on the physical
162 characteristics of the pollutant. In this model, we adopt a periodic boundary condition.

163 3) *Continuous variational model and the adjoint model*: We use level set equation (15) as the governing equation to predict
164 the evolution of oil slicks over time. The method used to determine the structure of the images, $\phi^{\mathcal{S}}(t)$, is described in (13).
165 The control variables are the initial condition and diffusion coefficients σ , a . In this case, the total cost function associated

with the observed images J^o , the backgrounds for initial conditions $J_{\phi(t_0)}^b$, and their coefficients $J_{\sigma,a}^b$, can be expressed as:

$$J = J^o + J_{\phi(t_0)}^b + J_{\sigma,a}^b, \quad (17)$$

$$J^o + J_{\phi(t_0)}^b = \frac{1}{2} \int_{t_0}^{t_f} \|\mathcal{H}_{\phi \rightarrow \mathcal{S}}[\mathcal{K}_t(\phi(t_0), \sigma, a)] - \mathcal{H}_{\mathcal{O} \rightarrow \mathcal{S}}[\phi_{obs}(t)]\|_{L^2(\tilde{\Omega})}^2 dt + \frac{\alpha}{2} \|\phi(t_0) - \phi(t_0)^b\|_{L^2(\tilde{\Omega})}^2, \quad (18)$$

$$J_{\sigma,a}^b = \frac{\beta}{2} (\mathcal{R}_{p_1, q_1}(\sigma) + \mathcal{R}_{p_2, q_2}(a)), \quad (19)$$

where $\mathcal{K}_t(\cdot)$ presents the forward operator of the differential equation (15) from t_0 to t , and the assimilation window is set as $[t_0, t_f]$. The variables α, β denote regularization parameters, and the expression $\phi(t_0)^b$ represents the background fields. When constructing an adjoint model, an additional difficulty is that of the non-differentiability inherent in mapping $\mathcal{H}_{\phi \rightarrow \mathcal{S}}(\cdot)$. Here, we modify the edge-based signum function to its differentiable form:

$$\mathcal{H}_{\phi \rightarrow \mathcal{S}}(\phi) = \frac{\phi}{\sqrt{\phi^2 + \varepsilon}}, \quad (20)$$

where ε is a small constant, and Section III-A details the method for determining it. The $\mathcal{R}_{p,q}(x)$ is a regularization term for σ and a . If the coefficients are defined as being constant values, the regularization term takes the following form:

$$\mathcal{R}_{p,q}(x) = \begin{cases} \frac{1}{2}(x - q)^2, & x > q \\ 0, & p \leq x \leq q \\ \frac{1}{2}(x - p)^2, & x < p \end{cases} \quad (21)$$

where p, q represent the lower and upper bounds of coefficients, respectively.

The new cost functions (17)-(19) are the main contribution of this paper. In the following, we will focus on how to compute and numerically implement above optimization problem of the cost functions, and apply the new method to oil spill VDA.

According to the definition of the adjoint operator in Hilbert space and the method of integration by parts, we can obtain a continuous adjoint model from the continuous forward model (15):

$$\begin{cases} \frac{\partial R}{\partial t} = \frac{\partial(A-u-F)R}{\partial x} + \frac{\partial(B-v-G)R}{\partial y} - \frac{\partial^2 CR}{\partial x^2} - \frac{\partial^2 DR}{\partial y^2} + \frac{\partial^2 ER}{\partial x \partial y} \\ \quad + [\frac{\partial \mathcal{H}_{\phi \rightarrow \mathcal{S}}}{\partial \phi}]^* (\mathcal{H}_{\phi \rightarrow \mathcal{S}}(\phi) - \mathcal{H}_{\mathcal{O} \rightarrow \mathcal{S}}(\phi_{obs})), \quad \text{on } [t_0, t_f] \times \tilde{\Omega} \\ R(t_f) = 0, \\ R|_{\partial \tilde{\Omega}} = 0, \end{cases} \quad (22)$$

where

$$A = \sigma \frac{2 \frac{\partial \phi}{\partial y} [(\frac{\partial \phi}{\partial x})^2 \frac{\partial^2 \phi}{\partial x \partial y} - (\frac{\partial \phi}{\partial y})^2 \frac{\partial^2 \phi}{\partial x \partial y} + \frac{\partial \phi}{\partial x} \frac{\partial \phi}{\partial y} \frac{\partial^2 \phi}{\partial y^2} - \frac{\partial \phi}{\partial x} \frac{\partial \phi}{\partial y} \frac{\partial^2 \phi}{\partial x^2}]}{\|\nabla \phi\|^4}, \quad (23)$$

$$B = \sigma \frac{2 \frac{\partial \phi}{\partial x} [-(\frac{\partial \phi}{\partial x})^2 \frac{\partial^2 \phi}{\partial x \partial y} + (\frac{\partial \phi}{\partial y})^2 \frac{\partial^2 \phi}{\partial x \partial y} - \frac{\partial \phi}{\partial x} \frac{\partial \phi}{\partial y} \frac{\partial^2 \phi}{\partial y^2} + \frac{\partial \phi}{\partial x} \frac{\partial \phi}{\partial y} \frac{\partial^2 \phi}{\partial x^2}]}{\|\nabla \phi\|^4}, \quad (24)$$

$$C = \sigma \frac{(\frac{\partial \phi}{\partial y})^2}{\|\nabla \phi\|^2}, \quad D = \sigma \frac{(\frac{\partial \phi}{\partial x})^2}{\|\nabla \phi\|^2}, \quad E = \sigma \frac{2 \frac{\partial \phi}{\partial x} \frac{\partial \phi}{\partial y}}{\|\nabla \phi\|^2}, \quad F = a \frac{\frac{\partial \phi}{\partial x}}{\|\nabla \phi\|}, \quad G = a \frac{\frac{\partial \phi}{\partial y}}{\|\nabla \phi\|}, \quad (25)$$

$$[\frac{\partial \mathcal{H}_{\phi \rightarrow \mathcal{S}}}{\partial \phi}]^*(\cdot) = (\frac{1}{\sqrt{\phi^2 + \varepsilon}} - \frac{\phi^2}{(\phi^2 + \varepsilon)^{\frac{3}{2}}})(\cdot). \quad (26)$$

181 Then, the gradient can be expressed as:

$$\begin{pmatrix} \nabla J(\phi_0) \\ \nabla J(\sigma) \\ \nabla J(a) \end{pmatrix} = \begin{pmatrix} -R(t_0) + (\phi(t_0) - \phi(t_0)^b) \\ -\int_{t_0}^{t_f} \int_{\tilde{\Omega}} \kappa R d\Omega dt + \nabla R_{p_1, q_1}(\sigma) \\ \int_{t_0}^{t_f} \int_{\tilde{\Omega}} ((\frac{\partial \phi}{\partial x})^2 + (\frac{\partial \phi}{\partial y})^2)^{\frac{1}{2}} R d\Omega dt + \nabla R_{p_2, q_2}(a) \end{pmatrix}. \quad (27)$$

182 III. APPLICATIONS TO EVOLUTION OF OIL SPILLS

183 A. Numerical implementation

184 The evolution of the fluid can be modeled using the state variable $X = (u, v, h)$, whose components verify the shallow
185 water equations in the conservative form expressed as:

$$\begin{cases} \frac{\partial h}{\partial t} + \frac{\partial uh}{\partial x} + \frac{\partial vh}{\partial y} = 0, & \text{on } [t_0, t_f] \times \tilde{\Omega} \\ \frac{\partial uh}{\partial t} + \frac{\partial}{\partial x}(u^2h + \frac{gh^2}{2}) + \frac{\partial uwh}{\partial y} = h(fv - g\frac{\partial H}{\partial x}), & \text{on } [t_0, t_f] \times \tilde{\Omega} \\ \frac{\partial vh}{\partial t} + \frac{\partial uwh}{\partial x} + \frac{\partial}{\partial y}(v^2h + \frac{gh^2}{2}) = h(-fu - g\frac{\partial H}{\partial y}), & \text{on } [t_0, t_f] \times \tilde{\Omega} \end{cases} \quad (28)$$

186 where a numerical simulation is performed on a rectangular domain $\tilde{\Omega} = [0, 2] \times [0, 2]$. Additionally, H is the height of the
187 orography, $h = z - H$ is the water elevation, and z is the free surface elevation. The variables $u(t, \mathbf{x})$ and $v(t, \mathbf{x})$ represent the
188 zonal and meridional components of the current velocity, respectively, and g represents the acceleration due to gravity. In this
189 model, the Coriolis parameter on the β -plane is defined as $f = f_0 + \beta y$. The following numerical values are used for these
190 experiments: $f_0 = 0.25s^{-1}$, $\beta = 0.0406m^{-1}s^{-1}$, $g = 9.81ms^{-2}$ and $H = 0$. We integrate this scheme forwards-in-time using
191 the Lax-Wendroff scheme [29], which is accurate to a second-order.

192 To discretize the level set equation, we use an upwind scheme for convection term discretization, and employ a central
193 difference method for diffusion terms. For the sake of simplicity, time integration is performed using the Euler scheme.
194 In applied cases, a third-order accurate TVD Runge-Kutta scheme could also be used. Detailed descriptions of high-order
195 discretization schemes for level set equations can be found in the literature [13], [14], [30], [31]. In our model, the domain is
196 discretized on a $N \times M = 81 \times 81$ uniform square grid. There are a total of 201 time steps. Each time step Δt is set to 0.0005s,
197 and the assimilation window is $[0, 0.1s]$. The variable ε , as expressed in (20), is usually defined as $(\Delta x)^2$. Additionally, in the
198 assimilation experiments, we assume that the current velocity fields u, v are known.

199 Because the forward model and the observations are both discrete, we can use the discrete adjoint model in this test to obtain
200 the gradient of the control variables. The validation of both the tangent linear and the adjoint is of the utmost importance for
201 nonlinear models. The methods of producing the discrete adjoint model and testing the gradient are shown in detail in the
202 Appendix A.

203 In this section, we have contributed directly assimilate the images of the structures of oil pollutants $\phi^S(t)$ into numerical
204 models to correct the contours of initial oil pollutants and diffusion coefficients of models. True structure images $\phi^S(t)$ are
205 taken at each time step and at every spatial grid point using the image-to-structure operator $\mathcal{H}_{\mathcal{O} \rightarrow \mathcal{S}}(\cdot)$. In this test, the sequences
206 of structure images proceeds according to $\mathcal{H}_{\phi \rightarrow \mathcal{S}}(\phi)$, where the level set function ϕ is produced from the forward model. The
207 sequences of synthetic structure images can thus be expressed as:

$$\phi^S = \mathcal{H}_{\phi \rightarrow \mathcal{S}}[\mathcal{K}_t(\phi(0)^t, \sigma^t, a^t)], \quad (29)$$

208 where $\phi(0)^t$ represents the true initial state of the system. To test the efficiency of this proposed method, we have contributed
 209 a missing data point at $t = 0$ to generate the initial image of the structure of the oil slicks, $\phi^S(0)$, which is shown in Fig. 5a.
 210 To assess the background fields of initial conditions, we assumed the missing oil slick began as a rectangular domain whose
 211 zero level set is shown as the solid red line in Fig. 6a. The true model parameters are $\sigma^t = 0.1$ and $a^t = 0.5$, and weights are
 212 set at $\alpha = 1$ and $\beta = 2$.

213 To assess the performance of the numerical test, we computed the root mean square error (*RMSE*) of the solution estimated
 214 relative to the true value. The *RMSE* is defined as

$$RMSE_{\phi(0)^a} = \sqrt{\frac{1}{|\tilde{\Omega}|} \sum_{\mathbf{x} \in \tilde{\Omega}} (\phi(0, \mathbf{x})^a - \phi(0, \mathbf{x})^t)^2}, \quad (30)$$

$$RMSE_{\sigma^a} = |\sigma^a - \sigma^t|, \quad (31)$$

$$RMSE_{a^a} = |a^a - a^t|, \quad (32)$$

217 where $\phi(0)^a$, σ^a , a^a represent optimal solutions.

218 B. Numerical results

219 To illustrate the level set method, we first show the numerical results, the level set function $\phi(t)$, produced from the forward
 220 model (15) at three different moments in Fig. 2. The level set function at the first moment derives from a synthetic oil spot
 221 image, which is obtained by constructing a signed distance function based on the oil spot edges. In this paper, we only take
 222 into account the affect of the shear flow fields provided by the shallow water equation (28). Fig. 3 presents the zero level set
 223 of $\phi(t)$ at corresponding moments of Fig. 2, representing the point set $(x(t), y(t))$ at which $\phi(x(t), y(t), t) = 0$. The zero
 224 level sets express the edges of oil slicks. The changes of the contours reveal the evolution of the shapes of the polluted areas,
 225 which drifted on the surface of the water at a velocity determined by the current and the wind in practical cases.

226 In the framework of level-set based DIA, we need two observation operators for the purpose of mapping the numerical
 227 solutions and the observations into the same structure space. One is the so-called image-to-structure operator $\mathcal{H}_{\mathcal{O} \rightarrow \mathcal{S}}(\cdot)$,
 228 the other is the model-to-structure operator $\mathcal{H}_{\phi \rightarrow \mathcal{S}}(\cdot)$. This construction procedure is presented in Fig. 4. First, a synthetic
 229 observation image ϕ_{obs} with noise is given displayed in Fig. 4a. The light gray part in the image indicates the oil pollution.
 230 Edge detection result $\mathcal{W}(\phi_{obs})$ by the method of wavelet modulus maximum is shown in Fig. 4b. Indeed, this method can
 231 balance noises and edges. Fig. 4c-4d depict the structure and modified structure image (i.e. the edge-based signum function
 232 and smoothing signum function image $\varphi^S = \mathcal{H}_{\mathcal{O} \rightarrow \mathcal{S}}(\phi_{obs})$). This can show the structure information of edge clearly. From
 233 the aspects of variables from the forward model, the level set function ϕ and the structure image $\varphi^S = \mathcal{H}_{\phi \rightarrow \mathcal{S}}(\phi)$ are shown
 234 in Fig. 4e-4f. As a result, Fig. 4d approximately equals to Fig. 4f.

235 Fig. 5 displays portions of the structure image sequences $\phi^S(t)$ constructed by the method defined in (29), which are used
 236 as true observations in numerical implementation. In order to test the efficiency of the proposed method, the structure image
 237 sequences include a missing image at $t = 0$. In practical cases, it can be considered as an image obfuscated by clouds.

238 To clearly compare numerical results, we can examine the zero level set of the analysis value $\phi(0)^a$ (shown as a solid
 239 red line in Fig. 6b) and the first guess or background fields $\phi(0)^b$ (shown as a solid red line in Fig. 6a), with respect to the
 240 corresponding true initial states $\phi(0)^t$ (shown as dashed black line in Fig. 6a and 6b). Fig. 6b suggests that the optimal solution
 241 will eventually converge to true values with increasing numbers of iterations. A part of the first observation is missing, the

242 proposed method is capable of recovering it. Additionally, the evolution of the l_2 norm of the gradient and its cost function
 243 are shown in Fig. 6c, in which the l_2 norm of the gradient gradually moves closer to zero.

244 Fig. 7 displays the evolution of the estimated coefficients σ , a , as well as their gradients and cost function. This shows that
 245 the optimal coefficients will be close to the true values with increasing numbers of iterations.

246 Finally, Table I and II list the results of our numerical tests, including the $RMSE$, gradients and cost function values, which
 247 change with increasing numbers of iterations. These results suggest that our proposed method performs well.

248 IV. CONCLUSIONS AND FUTURE WORK

249 A. Conclusions

250 In this paper, we propose a level-set based image assimilation method for assimilating geometric information from the
 251 observed images into numerical models. We present numerical experiments which can be applied to better predict oceanic
 252 oil spill dispersion. In general, our method takes into account both the complex topological structures of oil slicks and the
 253 geometric shape of the polluted areas to avoid delaying cleanup efforts by making inaccurate predictions from observations.
 254 This method represents a key step to better predict the evolutions of oil spill. Furthermore, the adapted edge-based signum
 255 observation operator could eventually link the data from the level set function to the structural information contained in satellite
 256 images. Our assimilation test yielded promising results.

257 B. Future work

258 In this paper it is assumed that both the external velocity and the concentration field are known. In practice they have to be
 259 estimated as well. This can be done sequentially with the proposed approach, but for the sake of consistency one may prefer
 260 to use a more integrated approach called splitting method for global oil spill problem. We first need to define the framework
 261 of optimal control.

262 1) Model and control variables:

- 263 • A model of flow: $\mathcal{F}(X, U) = 0$, where X is the state variable describing the evolution of the flow and initial conditions
 264 $X(t_0) = U$ is a control variable.
- 265 • An equation of concentration: $\mathcal{G}(X, C, W) = 0$, where C is the concentration of pollutant and $C(t_0) = W$ is a control
 266 variable.
- 267 • An equation for the evolution of an image: $\mathcal{K}(X, C, I, \phi_0, \lambda) = 0$, where I is the image and ϕ_0 is a control variable
 268 defining the initial level set associated with the spot of pollution. λ is an additional parameter (e.g., the viscosity of oil
 269 on the ocean's surface). In this paper, λ represents (σ, a) .

270 2) *Optimal control*: The goal of this problem is to determine $(U^a, W^a, \phi_0^a, \lambda^a)$ while minimizing the cost function; this is
 271 expressed as:

$$J(U, W, \phi_0, \lambda) = J_F + J_G + J_I = \frac{1}{2} \int_{t_0}^{t_f} \|\Gamma_X X - X_{obs}\|^2 + \|\Gamma_C C - C_{obs}\|^2 + \|\Gamma_I I - I_{obs}\|^2 dt, \quad (33)$$

272 where Γ_X , Γ_C and Γ_I are observation operators. Throughout the process of quantifying minimum values, $U_n, W_n, (\phi_0)_n$ can
 273 be obtained from the iterative formula:

- 274 • U_{n+1} minimizes J_F with the constraint $\mathcal{F}(X, U) = 0$,
- 275 • W_{n+1} minimizes J_G with the constraint $\mathcal{G}(X_{n+1}, C, W) = 0$,

276 • $((\phi_0)_{n+1}, \lambda_{n+1})$ minimizes J_I with the constraint $\mathcal{K}(X_{n+1}, C_{n+1}, I, \phi_0, \lambda) = 0$.

277 The two first formulae are well known in the VDA community [18], [19]. This splitting method solves large numerical problems
278 using a sequence and iteration of smaller, simpler problems. In the numerical experiments of this paper, we focus on the third
279 part of this algorithm.

280 Additionally, in the future we would like not only to further consider the physical properties controlling the movements of
281 oil spills but also to utilize real satellite images of oil slicks.

282 APPENDIX A

283 THE DISCRETE ADJOINT MODEL AND THE GRADIENT OF THE CONTROL VARIABLES

284 We consider the cost function J as follows:

$$J(u_0, \nu) = \frac{1}{2} \Delta t \sum_{n=1}^N \langle (\mathcal{H}(u^n) - u_{obs}^n), (\mathcal{H}(u^n) - u_{obs}^n) \rangle + \frac{1}{2} \langle (u_0 - u_b), (u_0 - u_b) \rangle, \quad (34)$$

285 where the discrete model is defined as follows:

$$u^{n+1} = \mathcal{M}(u^n, \nu), \quad (35)$$

286 where u_0 represents the initial condition, having been arranged in a column vector, and ν is a parameter of the model. The
287 variables u_{obs}^n , $n = 1, \dots, N$ represent the observations sampled at $t = n\Delta t$, and u_b is the background field or the first guess.
288 $\mathcal{H}(\cdot)$ represents a nonlinear observation operator which combines the model variables with observations. $\mathcal{M}(\cdot)$ is the discrete
289 operator of the forward model from the moment $t = n\Delta t$ to $t = (n+1)\Delta t$.

290 The Gâteaux derivative of J in the direction of perturbation $\delta u_0, \delta \nu$ is defined as:

$$\begin{aligned} \hat{J}(u_0, \nu, \delta u_0, \delta \nu) &= \lim_{\alpha \rightarrow 0} \frac{J(u_0 + \alpha \delta u_0, \nu + \alpha \delta \nu) - J(u_0, \nu)}{\alpha} \\ &= \langle \delta u_0, (u_0 - u_b) \rangle + \Delta t \sum_{n=1}^N \langle \hat{u}, \left(\frac{\partial \mathcal{H}}{\partial u}(u^n) \right)^* (\mathcal{H}(u^n) - u_{obs}^n) \rangle, \end{aligned} \quad (36)$$

291 where $*$ denotes the transpose. We can obtain the discrete tangent linear equation (DTLE) from the discrete model given in
292 (35):

$$\hat{u}^{n+1} = \frac{\partial \mathcal{M}}{\partial u}(u^n, \nu) \hat{u}^n + \frac{\partial \mathcal{M}}{\partial \nu}(u^n, \nu) \hat{\nu}. \quad (37)$$

293 Then, we can take the scalar products of (37) with the adjoint variable p^{n+1} and sum them all in time:

$$\sum_{n=1}^N \langle \hat{u}^{n+1}, p^{n+1} \rangle = \sum_{n=1}^N \langle \left(\frac{\partial \mathcal{M}}{\partial u}(u^n, \nu) \hat{u}^n \right), p^{n+1} \rangle + \sum_{n=1}^N \langle \left(\frac{\partial \mathcal{M}}{\partial \nu}(u^n, \nu) \hat{\nu} \right), p^{n+1} \rangle, \quad (38)$$

294 which is the same as:

$$\begin{aligned} \sum_{n=1}^N \langle \hat{u}^n, p^n \rangle - \langle \hat{u}^1, p^1 \rangle + \langle \hat{u}^{N+1}, p^{N+1} \rangle &= \sum_{n=1}^N \langle \hat{u}^n, \left(\frac{\partial \mathcal{M}}{\partial u}(u^n, \nu) \right)^* p^{n+1} \rangle \\ &+ \sum_{n=1}^N \langle \hat{\nu}, \left(\frac{\partial \mathcal{M}}{\partial \nu}(u^n, \nu) \right)^* p^{n+1} \rangle. \end{aligned} \quad (39)$$

295 Next, we can assume that p^{N+1} is 0 and use the fact that $\hat{u}^1 = \delta u_0$. This yields the following equation:

$$\sum_{n=1}^N \langle \hat{u}^n, (p^n - \left(\frac{\partial \mathcal{M}}{\partial u}(u^n, \nu) \right)^* p^{n+1}) \rangle = \langle \delta u_0, p^1 \rangle + \sum_{n=1}^N \langle \hat{\nu}, \left(\frac{\partial \mathcal{M}}{\partial \nu}(u^n, \nu) \right)^* p^{n+1} \rangle. \quad (40)$$

296 The Gâteaux derivative of J can be expressed as:

$$\begin{aligned}\hat{J}(u_0, \nu, \delta u_0, \delta \nu) &= \langle \delta u_0, \nabla_{u_0} J \rangle + \langle \hat{\nu}, \nabla_{\nu} J \rangle \\ &= \langle \delta u_0, (u_0 - u_b) \rangle + \Delta t \sum_{n=1}^N \langle \hat{u}, (\frac{\partial \mathcal{H}}{\partial u}(u^n))^* (\mathcal{H}(u^n) - u_{obs}^n) \rangle.\end{aligned}\quad (41)$$

297 If the so-called variable p is the solution of the following equation,

$$p^n - (\frac{\partial \mathcal{M}}{\partial u}(u^n, \nu))^* p^{n+1} = \Delta t (\frac{\partial \mathcal{H}}{\partial u}(u^n))^* (\mathcal{H}(u^n) - u_{obs}^n), \quad (42)$$

298 then

$$\begin{aligned}\langle \delta u_0, \nabla_{u_0} J \rangle + \langle \hat{\nu}, \nabla_{\nu} J \rangle &= \langle \delta u_0, (u_0 - u_b) \rangle + \langle \delta u_0, p^1 \rangle + \sum_{n=1}^N \langle \hat{\nu}, (\frac{\partial \mathcal{M}}{\partial \nu}(u^n, \nu))^* p^{n+1} \rangle \\ &= \langle \delta u_0, ((u_0 - u_b) + p^1) \rangle + \sum_{n=1}^N \langle \hat{\nu}, (\frac{\partial \mathcal{M}}{\partial \nu}(u^n, \nu))^* p^{n+1} \rangle.\end{aligned}\quad (43)$$

299 Finally, we can obtain the gradient:

$$\nabla_{u_0} J = (u_0 - u_b) + p^1, \quad (44)$$

300

$$\nabla_{\nu} J = \sum_{n=1}^N (\frac{\partial \mathcal{M}}{\partial \nu}(u^n, \nu))^* p^{n+1}. \quad (45)$$

301 Next, we can use the test of the gradient to validate both the tangent linear and the adjoint models. The test of the gradient
302 is based on the Taylor expansion of the cost function, which is written as follows:

$$J(\mathbf{x} + \alpha \delta \mathbf{x}) = J(\mathbf{x}) + \alpha \langle \nabla_{\mathbf{x}} J(\mathbf{x}), \delta \mathbf{x} \rangle + O(\alpha \|\delta \mathbf{x}\|), \quad (46)$$

303 where J is the cost function and \mathbf{x} is a symbolic representation of the initial condition or the parameters of the models.

304 Rearranging (46) leads to the following expression:

$$\lim_{\alpha \rightarrow 0} \frac{J(\mathbf{x} + \alpha \delta \mathbf{x}) - J(\mathbf{x})}{\alpha \langle \nabla_{\mathbf{x}} J(\mathbf{x}), \delta \mathbf{x} \rangle} = 1. \quad (47)$$

305

APPENDIX B

306

THE REINITIALIZATION BASED OPTIMAL CONTROL

307 In this section, we take into account the process of reinitialization mentioned in Section II-B in the framework of level-set
308 based DIA. In order to maintain the numerical stability of (9), one needs to reinitialize the level set function so that, after a
309 period of time, it moves closer to the signed distance function of the actual shape. This reinitialization procedure is expressed
310 as [14]:

$$\begin{cases} \frac{\partial \psi}{\partial \tau} = \text{sgn}(\phi)(1 - \|\nabla \psi\|), & \text{on } [\tau_0, \tau_f] \times R^d \\ \psi(\tau_0) = \phi(t), \end{cases} \quad (48)$$

311 where $\text{sgn}(\cdot)$ is the signum function and the variable ψ is called renormalized level set function. This makes possible the
312 computation of ψ by setting $\|\nabla \psi(\tau_f)\| = 1$ as the long-time limit $\tau_f \rightarrow \infty$, related to the corresponding evolution equation.

313 Then $\phi(t)$ will be substituted by $\psi(\tau_f)$.

314 For numerical implementation, we denote the discrete equation (15) and (48) respectively as:

$$\phi^{n+1} = \mathcal{A}(\phi^n), \quad (49)$$

$$\psi^{m+1} = \mathcal{B}(\psi^m), \quad \psi^1 = \phi^{n+1}, \quad (50)$$

where $\mathcal{A}(\cdot)$ and $\mathcal{B}(\cdot)$ are discrete forward operators from the moment $t = n\Delta t$ to $t = (n+1)\Delta t$ and $t = m\Delta t$ to $t = (m+1)\Delta t$. R^d in (48) is set to $\tilde{\Omega}$. And the process of initialization is used for each time step. We can obtain the DTLE from the discrete model given in (49) and (50):

$$\hat{\phi}^{n+1} = \frac{\partial \mathcal{A}}{\partial \phi}(\phi^n) \hat{\phi}^n, \quad (51)$$

$$\hat{\psi}^{m+1} = \frac{\partial \mathcal{B}}{\partial \psi}(\psi^m) \hat{\psi}^m, \quad \hat{\psi}^1 = \hat{\phi}^{n+1}. \quad (52)$$

Then we have:

$$\hat{\psi}^{m+1} = \frac{\partial \mathcal{B}}{\partial \psi}(\psi^m) \cdots \frac{\partial \mathcal{B}}{\partial \psi}(\psi^1) \hat{\psi}^1 = \frac{\partial \mathcal{B}}{\partial \psi}(\psi^m) \cdots \frac{\partial \mathcal{B}}{\partial \psi}(\psi^1) \hat{\phi}^{n+1} = \frac{\partial \mathcal{B}}{\partial \psi}(\psi^m) \cdots \frac{\partial \mathcal{B}}{\partial \psi}(\psi^1) \frac{\partial \mathcal{A}}{\partial \phi}(\phi^n) \hat{\phi}^n. \quad (53)$$

The variable $\hat{\psi}^{m+1}$ represents the updated $\hat{\phi}^{n+1}$. In addition, the adjoint of the operator $\mathbf{B} = \frac{\partial \mathcal{B}}{\partial \psi}(\psi^m) \cdots \frac{\partial \mathcal{B}}{\partial \psi}(\psi^1) \frac{\partial \mathcal{A}}{\partial \phi}(\phi^n)$ used in the adjoint model (42) will be expressed as follows:

$$(\mathbf{B})^* = \left[\frac{\partial \mathcal{B}}{\partial \psi}(\psi^m) \cdots \frac{\partial \mathcal{B}}{\partial \psi}(\psi^1) \frac{\partial \mathcal{A}}{\partial \phi}(\phi^n) \right]^* = \left[\frac{\partial \mathcal{A}}{\partial \phi}(\phi^n) \right]^* \left[\frac{\partial \mathcal{B}}{\partial \psi}(\psi^1) \right]^* \cdots \left[\frac{\partial \mathcal{B}}{\partial \psi}(\psi^m) \right]^*. \quad (54)$$

Because of the linearity of the Jacobian matrix, the adjoint of the operator is equivalent to its transpose. In practical cases, the number m is fixed in each iteration, which represents the duration of the reinitialization. For the sake of simplicity, we will not take this procedure into account in this paper.

ACKNOWLEDGMENT

This work is supported by NSFC (grant number: 91330108, 41374121, 61327013), the Fundamental Research Funds for the Central Universities (grant number: HIT.PIRS.A201501).

REFERENCES

- [1] F. X. Le Dimet and O. Talagrand, "Variational algorithms for analysis and assimilation of meteorological observations: theoretical aspects," *Tellus Series A-dynamic Meteorology and Oceanography*, vol. 38A, no. 2, p. 97C110, 1986.
- [2] Y. Sasaki, "Some basic formalisms in numerical variational analysis," *Monthly Weather Review*, vol. 98, no. 12, pp. 875–883, 1970.
- [3] I. Herlin, F. X. Le Dimet, E. Huot, and J. P. Berroir, "Coupling models and data: which possibilities for remotely-sensed images?" in *e-Environment: Progress and Challenge*, ser. Research on Computing Science, P. Prastacos, U. Cortés, J. L. Díaz De León, and M. Murillo, Eds. Instituto Politécnico Nacional, Nov. 2004, vol. 11, pp. 365–383.
- [4] B. K. Horn and B. G. Schunck, "Determining optical flow," *Artificial Intelligence*, vol. 17, no. 1, pp. 185 – 203, 1981.
- [5] T. Corpetti, P. Has, E. Mmin, and N. Papadakis, "Pressure image assimilation for atmospheric motion estimation," *Tellus Series A-dynamic Meteorology and Oceanography*, vol. 61, no. 1, p. 160C178, 2009.
- [6] E. Candès, L. Demanet, D. Donoho, and L. Ying, "Fast discrete curvelet transforms," *Multiscale Modeling and Simulation*, vol. 5, no. 3, pp. 861–899, 2006.
- [7] J. Ma, A. Antoniadis, and F. X. Le Dimet, "Curvelet-based snake for multiscale detection and tracking of geophysical fluids," *IEEE Transactions on Geoscience and Remote Sensing*, vol. 44, no. 12, pp. 3626–3638, 2006.
- [8] J. Ma, M. Y. Hussaini, O. V. Vasilyev, and F. X. Le Dimet, "Multiscale geometric analysis of turbulence by curvelets," *Physics of Fluids*, vol. 21, no. 7, pp. –, 2009.
- [9] F. X. Le Dimet, I. Souopgui, O. Titau, V. Shutyaev, and M. Y. Hussaini, "Toward the assimilation of images," *Nonlinear Processes in Geophysics*, vol. 1, no. 2, pp. 1381–1430, 2014.
- [10] O. Titau, A. Vidard, and I. Souopgui, "Assimilation of image sequences in numerical models," *Tellus*, vol. 62, no. 1, pp. 30–47, 2010.
- [11] O. Titau, J. M. Brankart, and J. Verron, "On the use of finite-time lyapunov exponents and vectors for direct assimilation of tracer images into ocean models," *Tellus*, vol. 63, no. 5, pp. 1038–1051, 2011.

- 349 [12] V. Chabot, M. Nodet, N. Papadakis, and A. Vidard, "Accounting for observation errors in image data assimilation," *Tellus*, vol. 67, 2015.
- 350 [13] S. Osher and J. A. Sethian, "Fronts propagating with curvature-dependent speed: Algorithms based on hamilton-jacobi formulations," *Journal of*
351 *Computational Physics*, vol. 79, no. 1, pp. 12–49, 1988.
- 352 [14] S. Osher and R. Fedkiw, *Level Set Methods and Dynamic Implicit Surfaces*. Springer New York, 2003.
- 353 [15] S. Osher and R. P. Fedkiw, "Level set methods: An overview and some recent results ," *Journal of Computational Physics*, vol. 169, no. 2, pp. 463–502,
354 2001.
- 355 [16] B. J. A. Serbian, "Level set methods and fast marching methods," vol. 11, no. 1, p. 400, 2010.
- 356 [17] J. A. Sethian and P. Smereka, "Level set methods for fluid interfaces," *Annual Review of Fluid Mechanics*, vol. 35, no. 1, pp. 341–72, 2003.
- 357 [18] F. X. Le Dimet, V. P. Shutyaev, and T. H. Tran, "General sensitivity analysis in data assimilation," *Russian Journal of Numerical Analysis and Mathematical*
358 *Modelling*, vol. 29, no. 2, pp. 107–127, 2014.
- 359 [19] F. X. Le Dimet, I. Souopgui, and H. E. Ngodock, "Sensitivity analysis applied to a variational data assimilation of a simulated pollution transport
360 problem," *International Journal for Numerical Methods in Fluids*, 2016.
- 361 [20] A. N. Tikhonov, "Regularization of incorrectly posed problems," *Sov Math*, vol. 4, no. 1, pp. 1624–1627, 1963.
- 362 [21] D. C. Liu and J. Nocedal, "On the limited memory bfgs method for large scale optimization," *Mathematical Programming*, vol. 45, no. 45, pp. 503–528,
363 1989.
- 364 [22] J. Canny, "A computational approach to edge detection," *IEEE Transactions on Pattern Analysis and Machine Intelligence*, vol. 8, no. 6, pp. 679–698,
365 1986.
- 366 [23] A. Cohen, "Biorthogonal wavelets," in *Wavelets: a tutorial in theory and applications*, 1993, pp. 123–152.
- 367 [24] S. Mallat and W. L. Hwang, "Singularity detection and processing with wavelets," *IEEE Transactions on Information Theory*, vol. 38, no. 2, pp. 617–643,
368 1992.
- 369 [25] S. Mallat, "Zero-crossings of a wavelet transform," *IEEE Transactions on Information Theory*, vol. 37, no. 4, pp. 1019–1033, 2006.
- 370 [26] M. T. Alonso, C. Lopez-Martinez, J. J. Mallorqui, and P. Salembier, "Edge enhancement algorithm based on the wavelet transform for automatic edge
371 detection in sar images," *IEEE Transactions on Geoscience and Remote Sensing*, vol. 49, no. 1, pp. 222–235, 2011.
- 372 [27] K. K. Simhadri, S. S. Iyengar, R. J. Holyer, M. Lybanon, and J. M. Zachary, "Wavelet-based feature extraction from oceanographic images," *IEEE*
373 *Transactions on Geoscience and Remote Sensing*, vol. 36, no. 3, pp. 767–778, 1998.
- 374 [28] A. Niedermeier, E. Romaneessen, and S. Lehner, "Detection of coastlines in sar images using wavelet methods," *IEEE Transactions on Geoscience and*
375 *Remote Sensing*, vol. 38, no. 5, pp. 2270–2281, 2000.
- 376 [29] R. Liska and B. Wendroff, "2d shallow water equations by composite schemes," *International Journal for Numerical Methods in Fluids*, vol. 30, no. 4,
377 1998.
- 378 [30] G. S. Jiang and D. Peng, "Weighted eno schemes for hamilton-jacobi equations," *SIAM Journal on Scientific Computing*, vol. 21, no. 6, pp. 2126–2143,
379 1999.
- 380 [31] C. W. Shu and S. Osher, "Efficient implementation of essentially non-oscillatory shock-capturing schemes," *Journal of Computational Physics*, vol. 77,
381 no. 2, pp. 439–471, 1988.

TABLE I: ASSIMILATION RESULTS OF INITIAL CONDITIONS

Iterations	$RMSE_{\phi(0)}$	$\ \nabla J(\phi(0))\ $	$J(\phi(0))$
70	3.5748e-02	1.3687e-01	1.0920

TABLE II: ASSIMILATION RESULTS OF COEFFICIENTS

Iterations	$RMSE_{\sigma}$	$RMSE_a$	$\ \nabla J(\sigma)\ $	$\ \nabla J(a)\ $	$J(a, \sigma)$
30	1.7118e-02	9.5625e-02	6.9408e-04	3.9667e-03	3.5445e-01
60	4.9719e-03	2.7232e-02	1.9990e-04	1.1045e-03	2.2405e-01
120	4.2778e-04	2.3226e-03	1.7104e-05	9.2939e-05	2.1261e-01

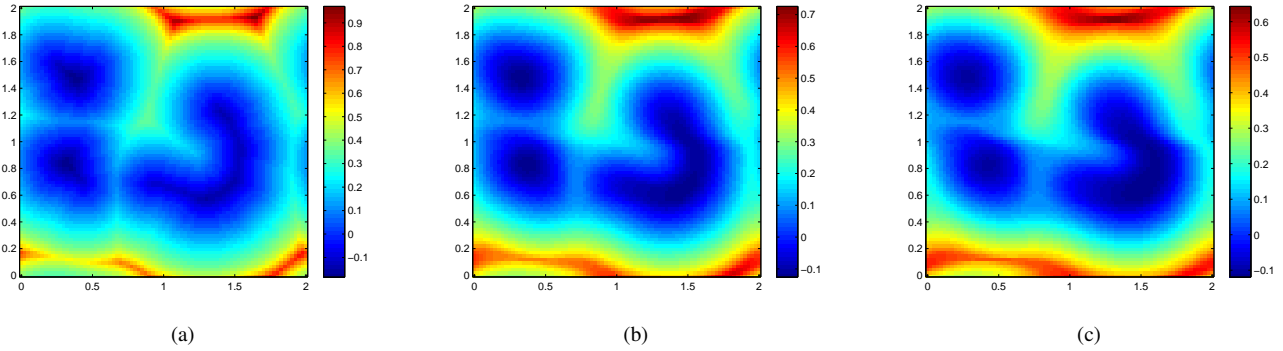


Fig. 2: Level set function $\phi(t)$ at three moments produced by forward model. (a) Initial moment $t = 0$. (b) After 100 time steps. (c) Final moment $t = 0.1s$.

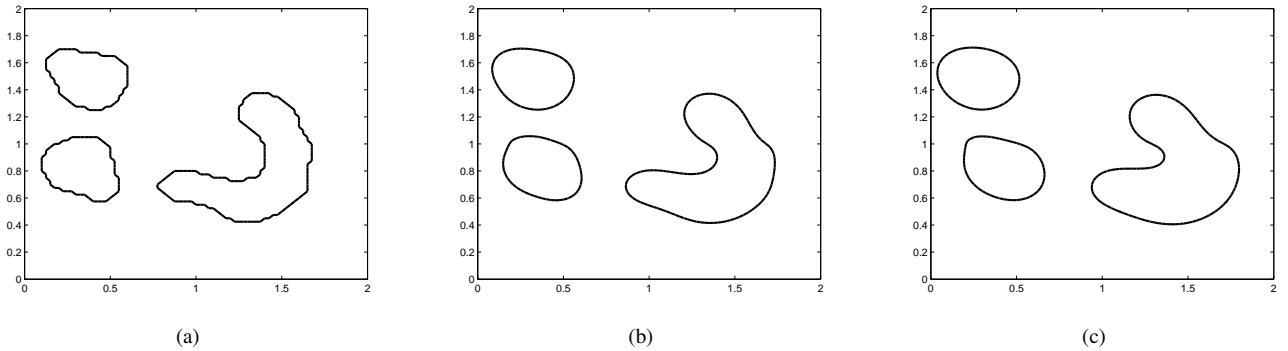


Fig. 3: Zero level set of $\phi(t)$ at three moments produced by forward model. (a) Initial moment $t = 0$. (b) After 100 time steps. (c) Final moment $t = 0.1s$.

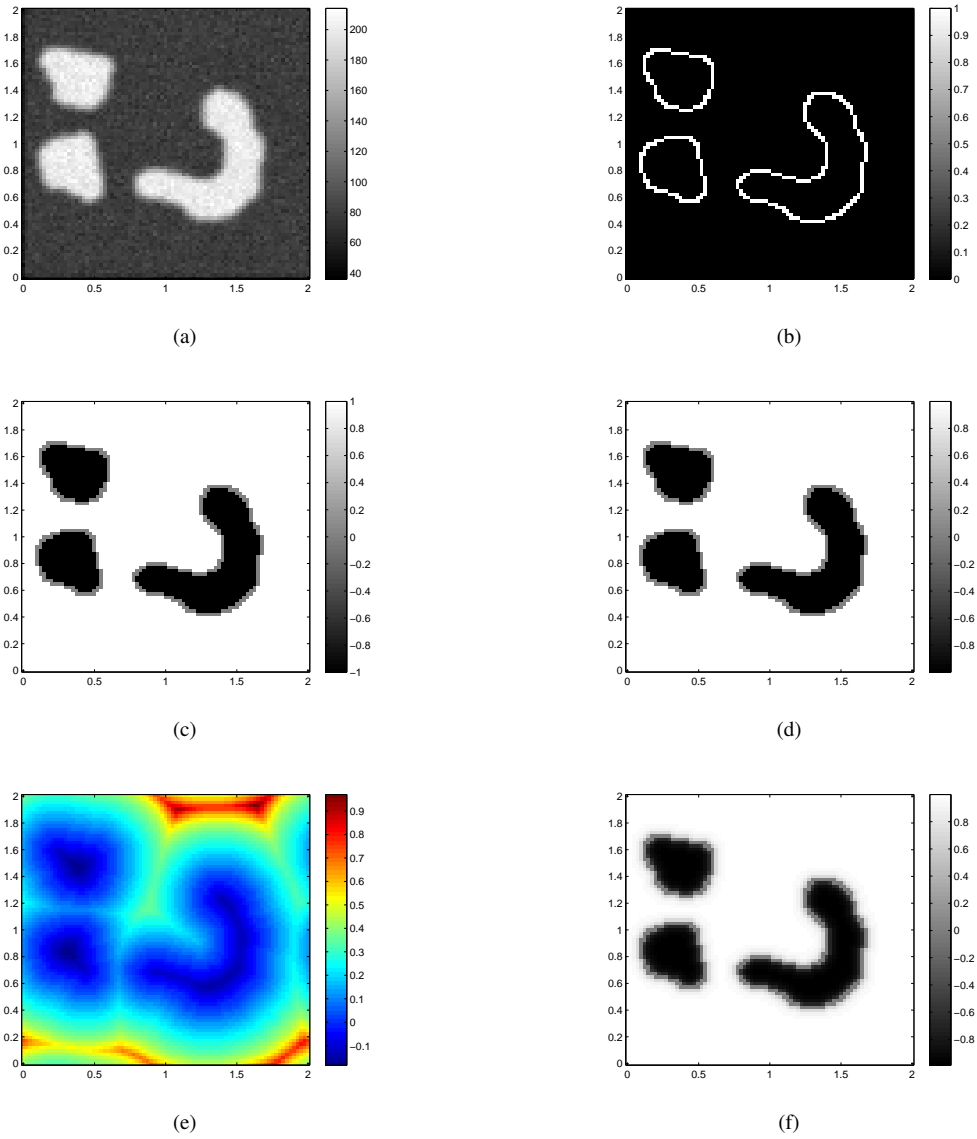


Fig. 4: (a) Synthetic observation image ϕ_{obs} . (b) Edge detection result $\mathcal{W}(\phi_{obs})$. (c) Structure image. (d) Modified structure image $\varphi^S = \mathcal{H}_{\mathcal{O} \rightarrow \mathcal{S}}(\phi_{obs})$. (e) Signed distance function image ϕ . (f) Modified structure image $\varphi^S = \mathcal{H}_{\phi \rightarrow \mathcal{S}}(\phi)$.

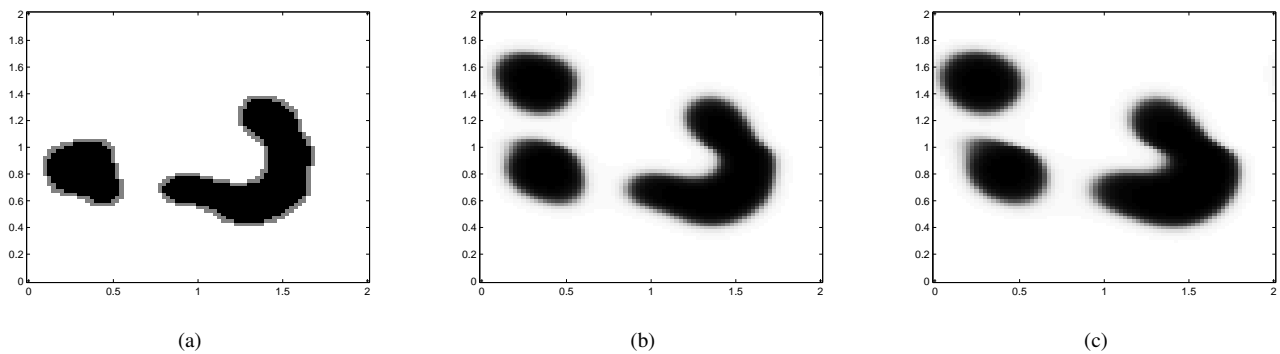


Fig. 5: Portions of the sequences of structure images $\phi^S(t)$ including a missing image at $t = 0$. (a) Initial moment $t = 0$. (b) $t = 0.05s$. (c) Final moment $t = 0.1s$.

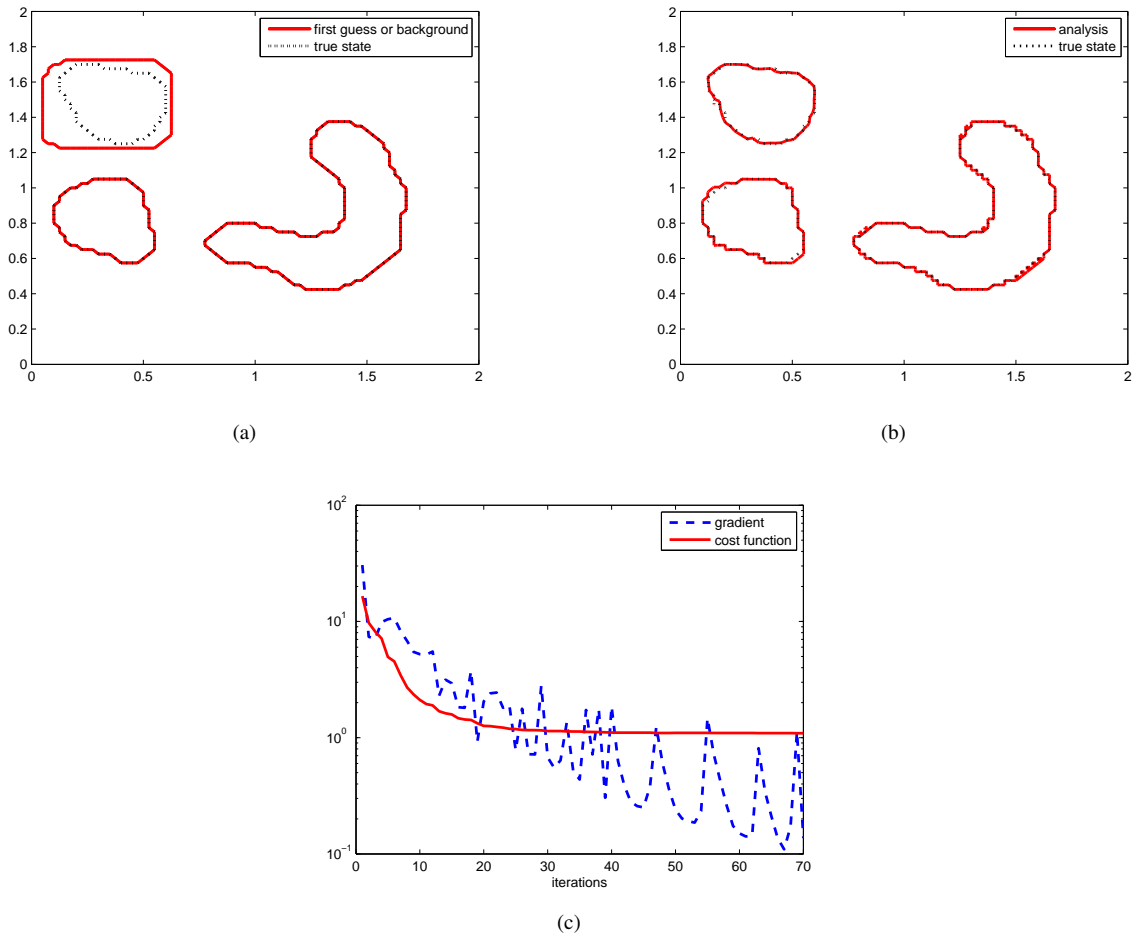


Fig. 6: Assimilation results of initial conditions $\phi(0)$. (a) Comparison before assimilation. (b) Comparison after assimilation. (c) Evolution of the l_2 norm of the gradient and its cost function.

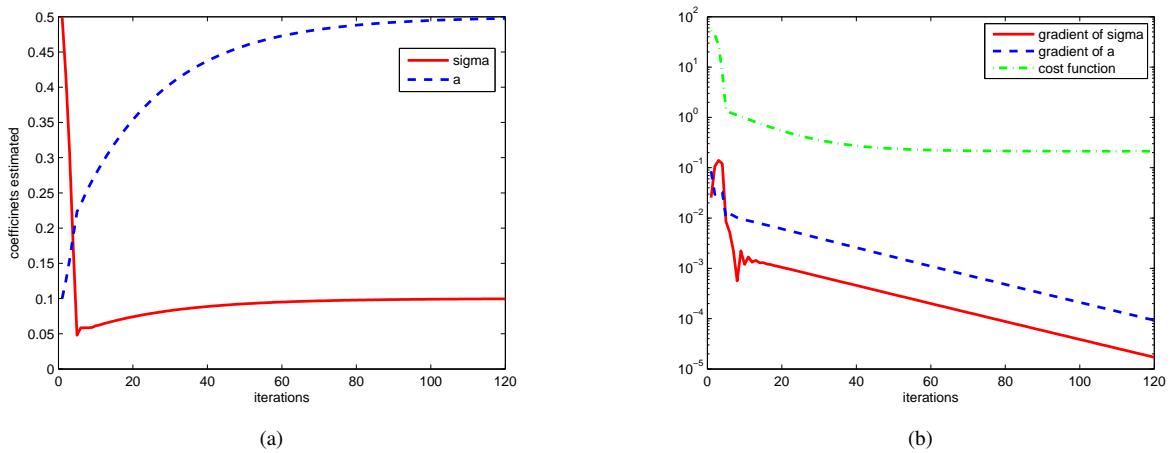


Fig. 7: Assimilation results of coefficients. (a) Evolution of coefficients σ , a estimated with the iterations ($\sigma^t = 0.1$, $a^t = 0.5$). (b) Evolution of the l_2 norm of the gradients and cost function.

382
383
384
385

Long Li received the M. S. degree in applied mathematics from Harbin Institute of Technology, Harbin, China, in 2016. He is currently a Ph.D Candidate of Department of Mathematics, Harbin Institute of Technology, Harbin, China. His research interests include data assimilation, sparse transform and image processing.

386
387
388
389
390
391
392

François-Xavier Le Dimet received a “Doctorat d’Etat” from Université Blaise Pascal à Clermont-Ferrand. He belongs to Laboratoire Jean-Kuntzmann and INRIA at Université Grenoble-Alpes where he is Professor Emeritus. He is an adjunct professor at Florida State University and has been visiting professor in many universities in USA, Russia, China, Vietnam, Cameroon, Spain. In 1982, he introduced optimal control methods for the assimilation of data in geophysical models. Now this technique (also known as 4D VAR) is used by many operational weather prediction centers worldwide. He was selected the Fellow of the American Meteorological Society and is a co-recipient of the Premier Prix Cray in scientific computing. He is currently working on data assimilation applied to geophysical fluids.

393
394
395
396
397
398
399

Jianwei Ma received the Ph.D. degree in engineering from Tsinghua University, Beijing, China, in 2002. He was an Assistant Professor and Associate Professor with the School of Aerospace, Tsinghua University, from 2006 to 2010. He was a Scientist with Florida State University, Tallahassee, from May 2010 to June 2011. He is currently the Vice Dean of Department of Mathematics, Harbin Institute of Technology, Harbin, China. He was a Post-Doctoral Researcher and had visiting experiences with the University of Cambridge, Cambridge, U.K., University of Grenoble, Grenoble, France, University of Duisburg-Essen, Duisburg, Germany, Ecole des Mines de Paris, Paris, France, since 2002. He obtained the NSFC Distinguished Young Scholars in 2016. His research interests include sparse transforms, geophysical data processing, compressed sensing, inverse problems, and remote sensing.

400
401
402
403
404

Arthur Vidard received a PhD from Université Joseph Fourier in Grenoble, France in 2001 and an ‘Habilitation à diriger les recherches’ from the same university in 2012. He was a researcher at ECMWF in Reading UK from 2002 to 2006 and has been a researcher at INRIA since 2006. His research interest lies in optimal control, data assimilation, and sensitivity analysis applied to geophysical fluids.