



**HAL**  
open science

## Randomized fluid dynamics based on subgrid transport

Valentin Resseguier, Etienne Mémin, Bertrand Chapron

► **To cite this version:**

Valentin Resseguier, Etienne Mémin, Bertrand Chapron. Randomized fluid dynamics based on subgrid transport. Workshop on Stochastic Weather Generators, May 2016, Vannes, France. hal-01377747

**HAL Id: hal-01377747**

**<https://inria.hal.science/hal-01377747v1>**

Submitted on 9 Nov 2016

**HAL** is a multi-disciplinary open access archive for the deposit and dissemination of scientific research documents, whether they are published or not. The documents may come from teaching and research institutions in France or abroad, or from public or private research centers.

L'archive ouverte pluridisciplinaire **HAL**, est destinée au dépôt et à la diffusion de documents scientifiques de niveau recherche, publiés ou non, émanant des établissements d'enseignement et de recherche français ou étrangers, des laboratoires publics ou privés.

# Randomized fluid dynamics based on subgrid transport

Valentin Resseguier,  
Etienne Mémin,  
Bertrand Chapron

# Motivations

- Rigorously identified subgrid dynamics effects
- Injecting likely small-scale dynamics
- Predicting possible distinct scenarios
- Quantification of modeling errors:
  - Diagnose to design numerical simulations (mesh refinements, ...)
  - **Data assimilation: ensemble forecasts**

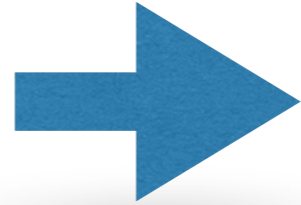
# Contents

- Randomized dynamics
- SQG under Moderate Uncertainty

# Randomized dynamics

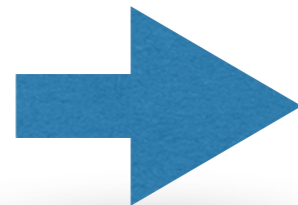
# Random equations

- Random initial conditions



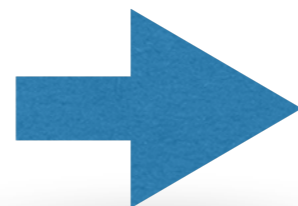
Underdispersive

- Arbitrary Gaussian forcing



Adding energy  
+ wrong phase

- Averaging, homogenization



Previous talk

- Adding white  
random velocity

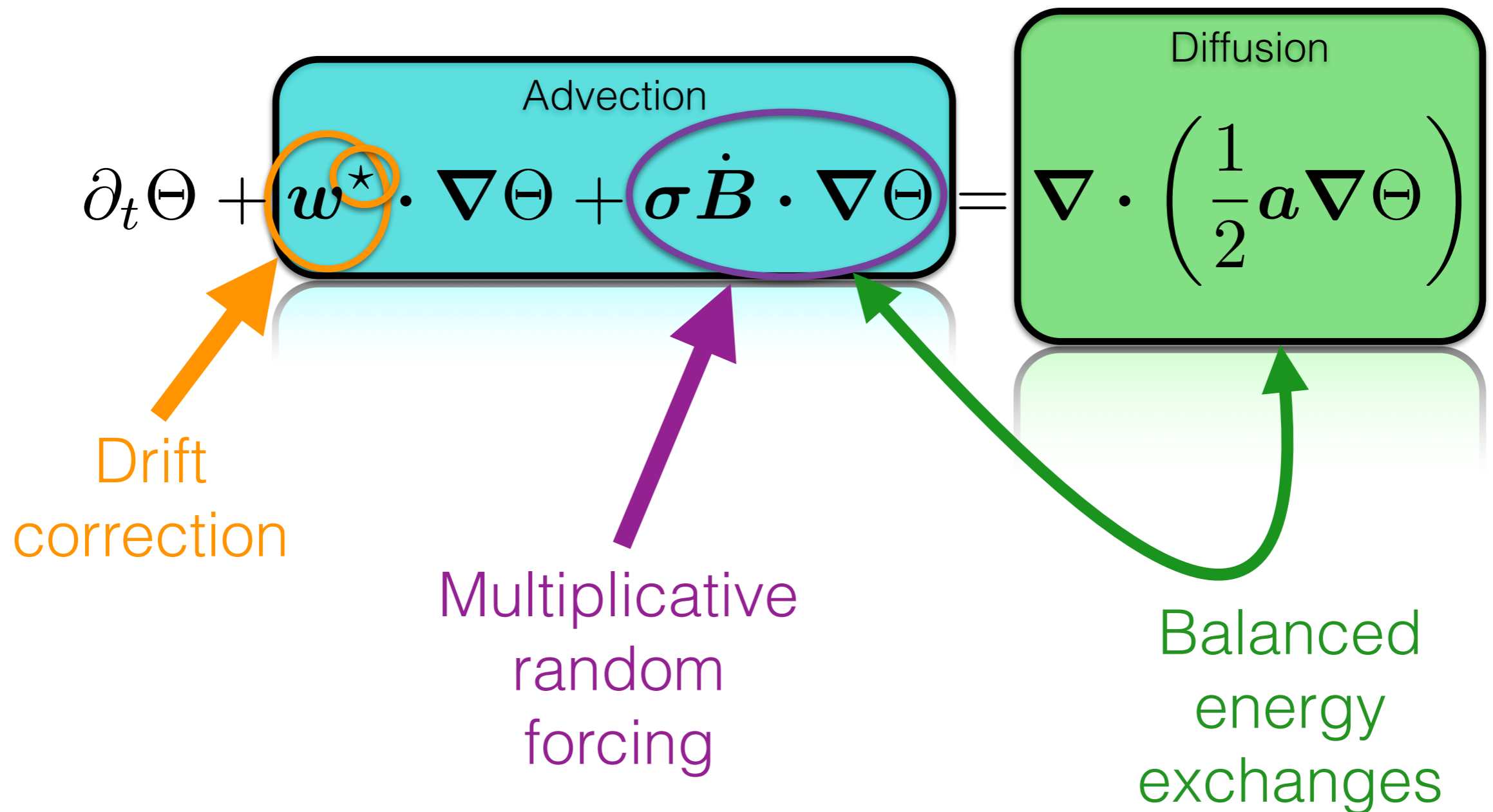


$$\boldsymbol{v} = \boldsymbol{w} + \sigma \dot{\boldsymbol{B}}$$

Advection of tracer  $\Theta$

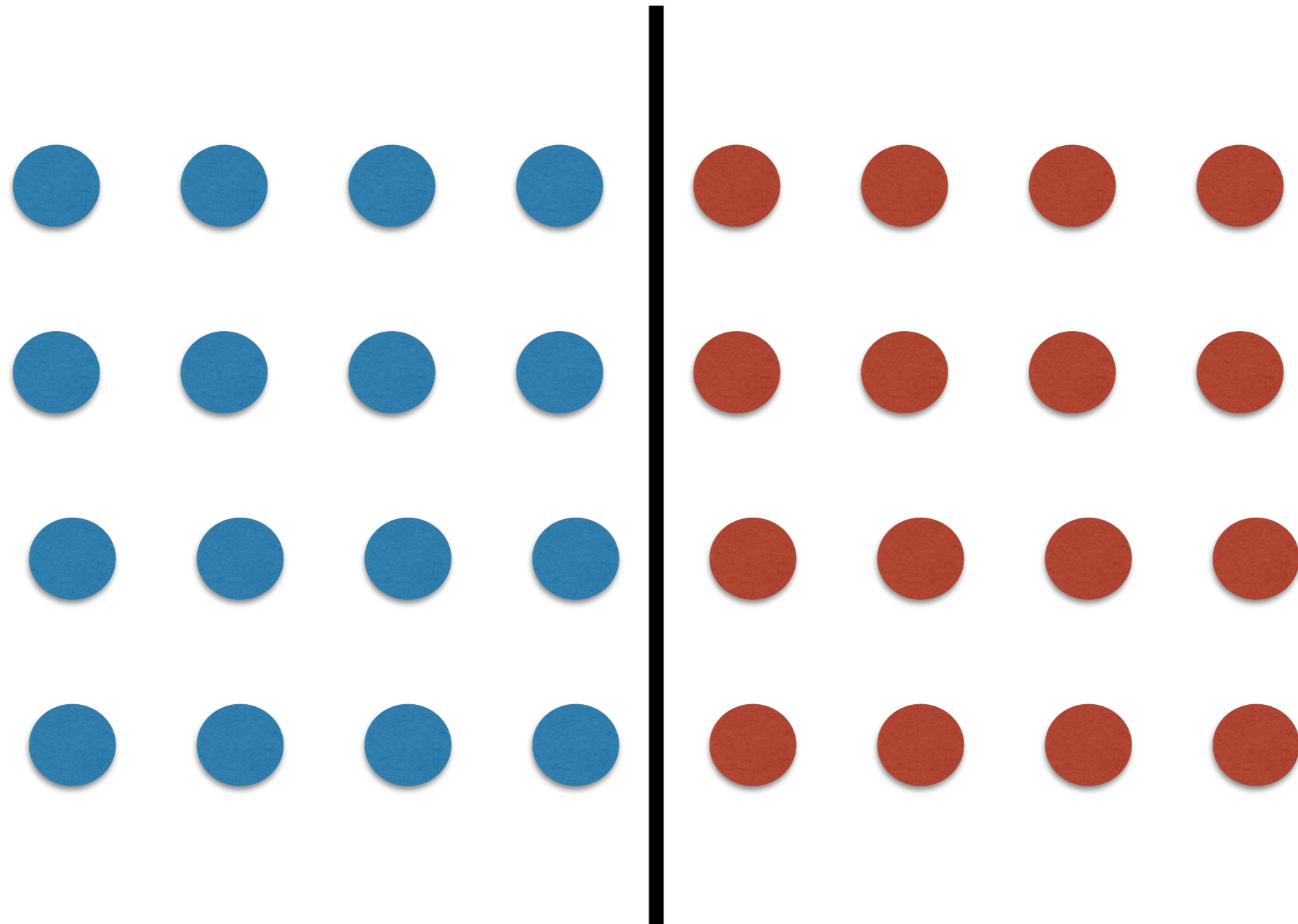
$$\frac{D\Theta}{Dt} = 0$$

# Advection of tracer $\Theta$



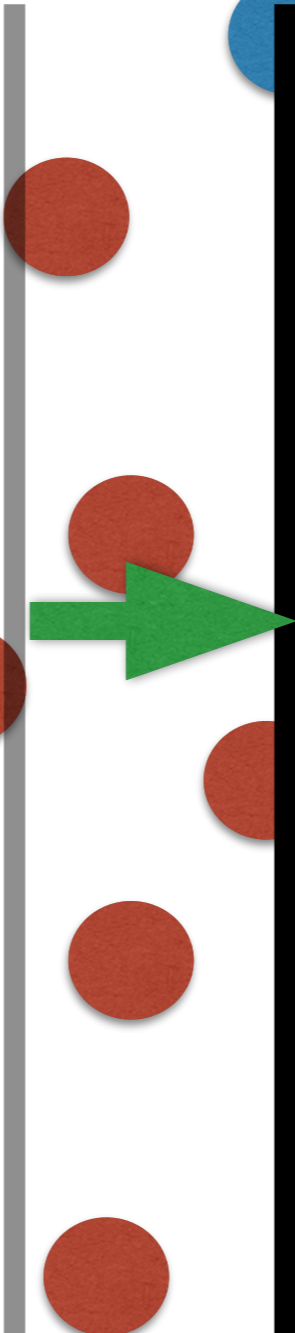


# Drift correction

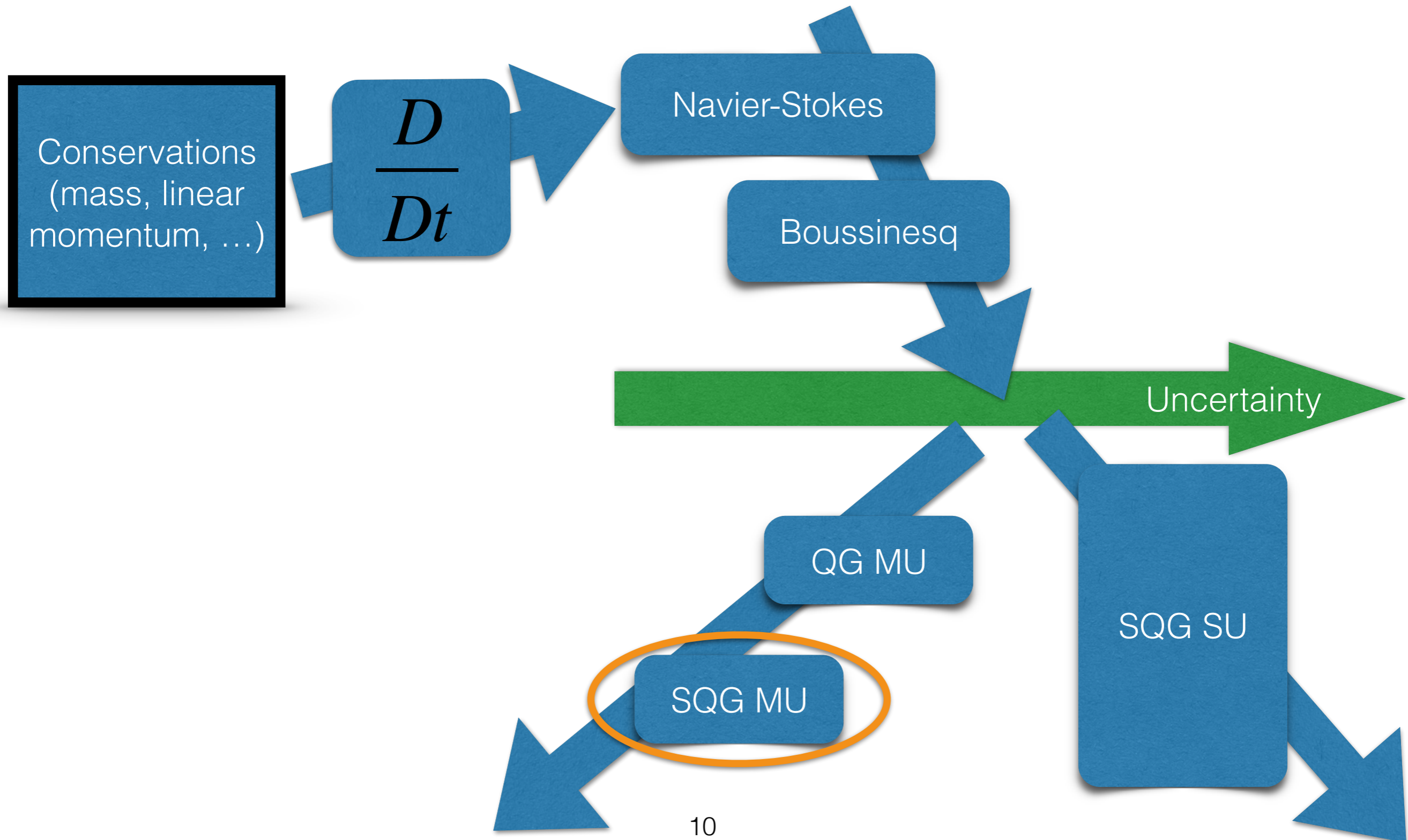


# Drift correction

$$w^* = w - \frac{1}{2} (\nabla \cdot \mathbf{a})^T$$



# Derived random models



# SQG under Moderate Uncertainty

SQG MU

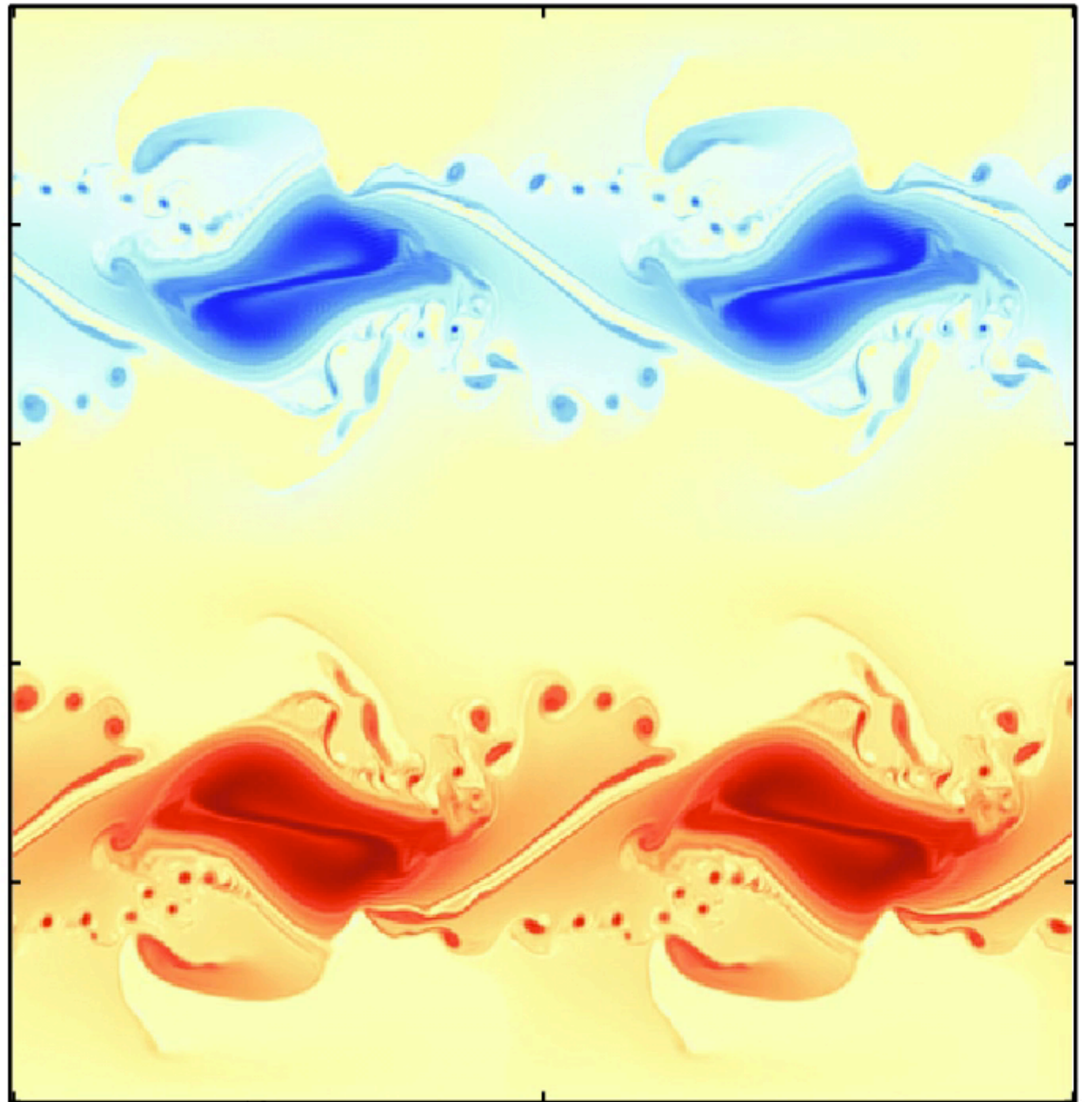
*Code available online*

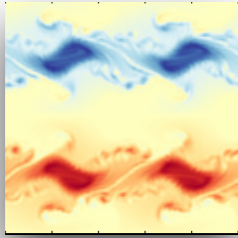
$t = 17$  days

Reference flow:  
deterministic

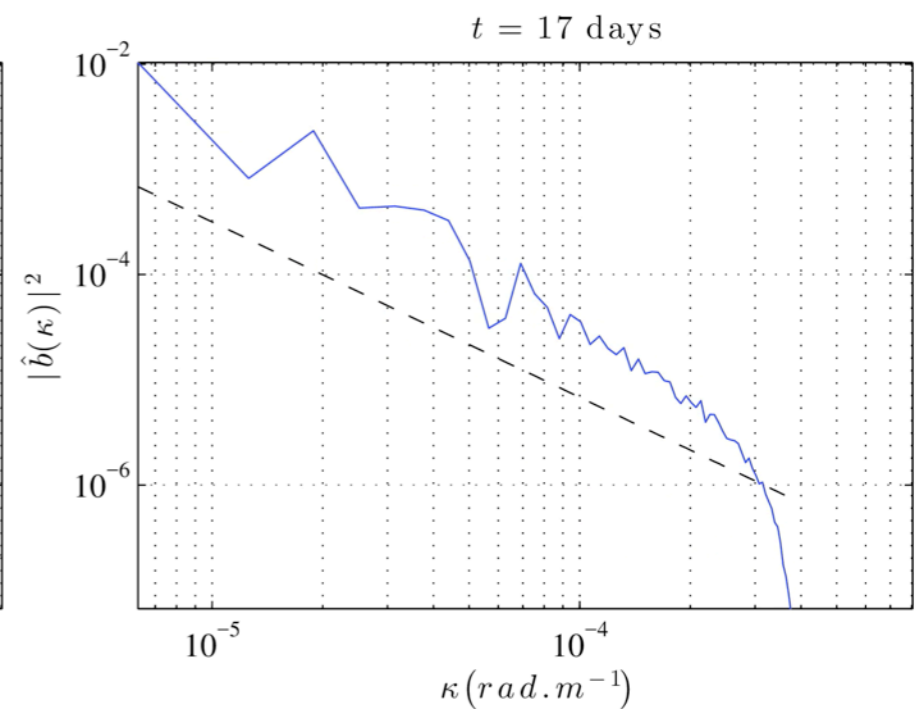
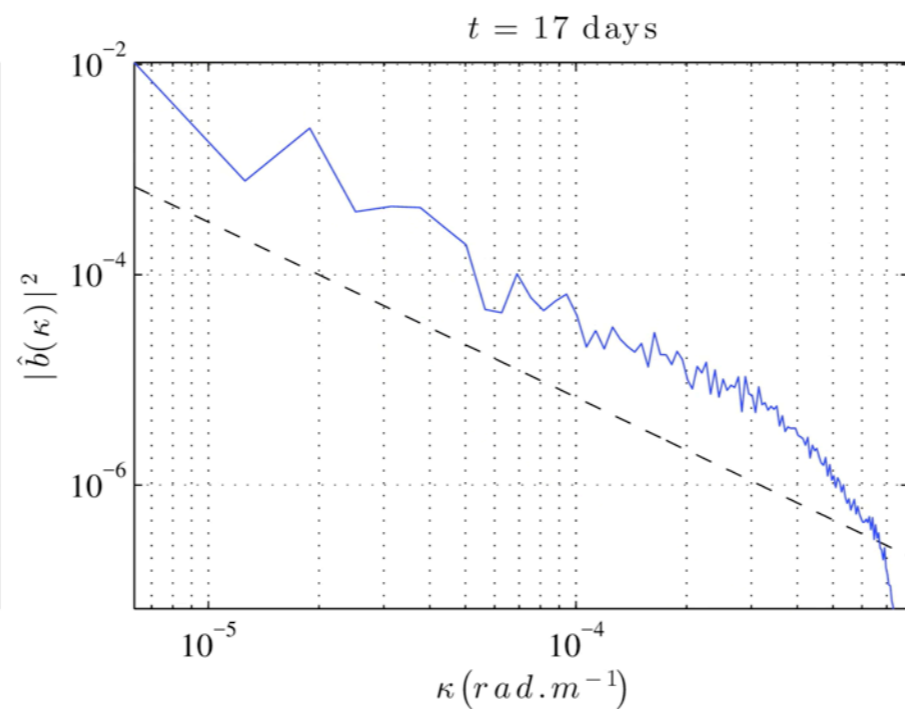
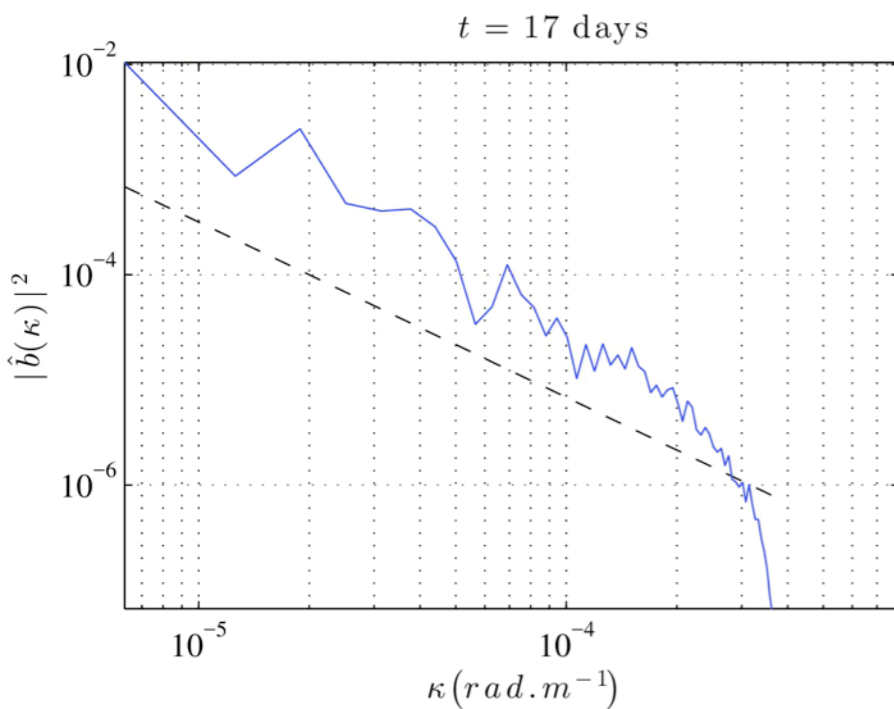
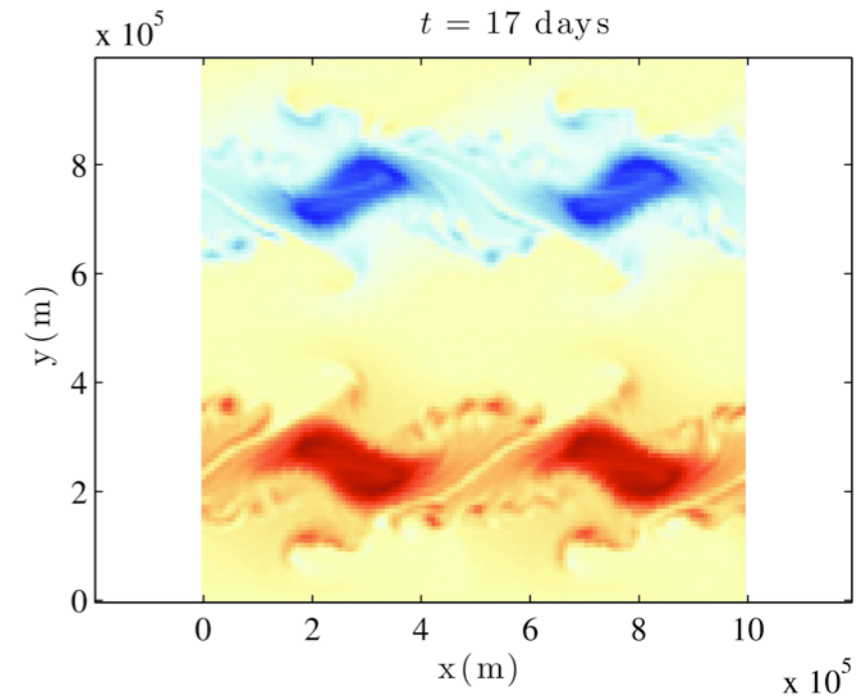
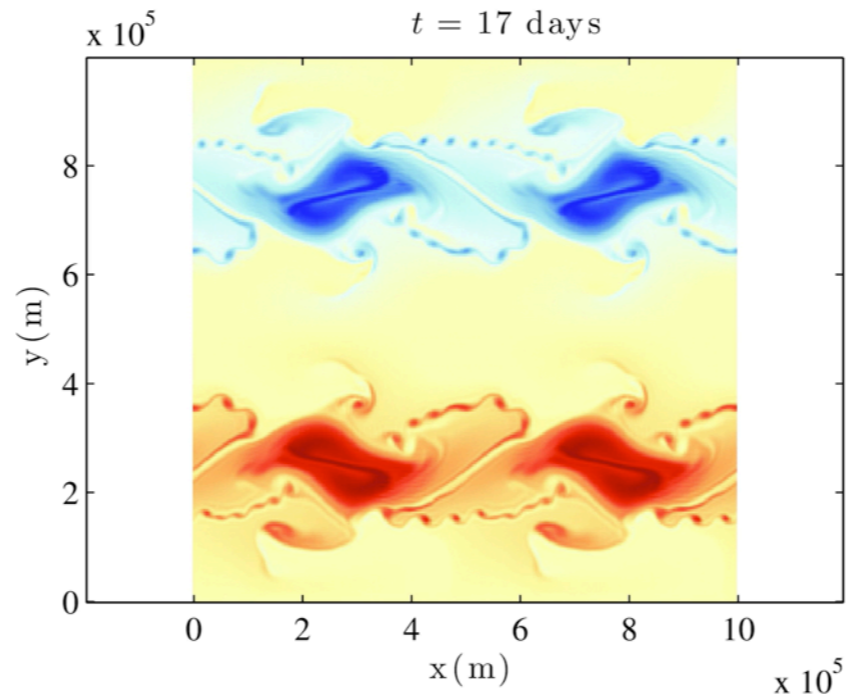
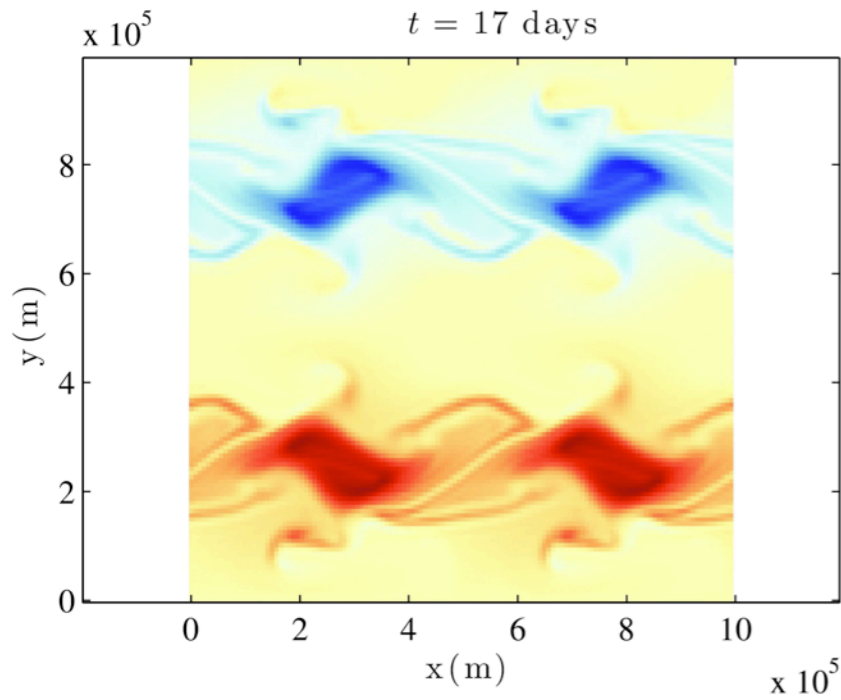
SQG

512 x 512





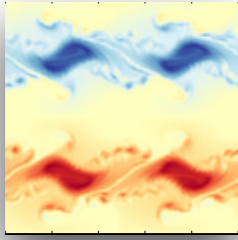
# One realization



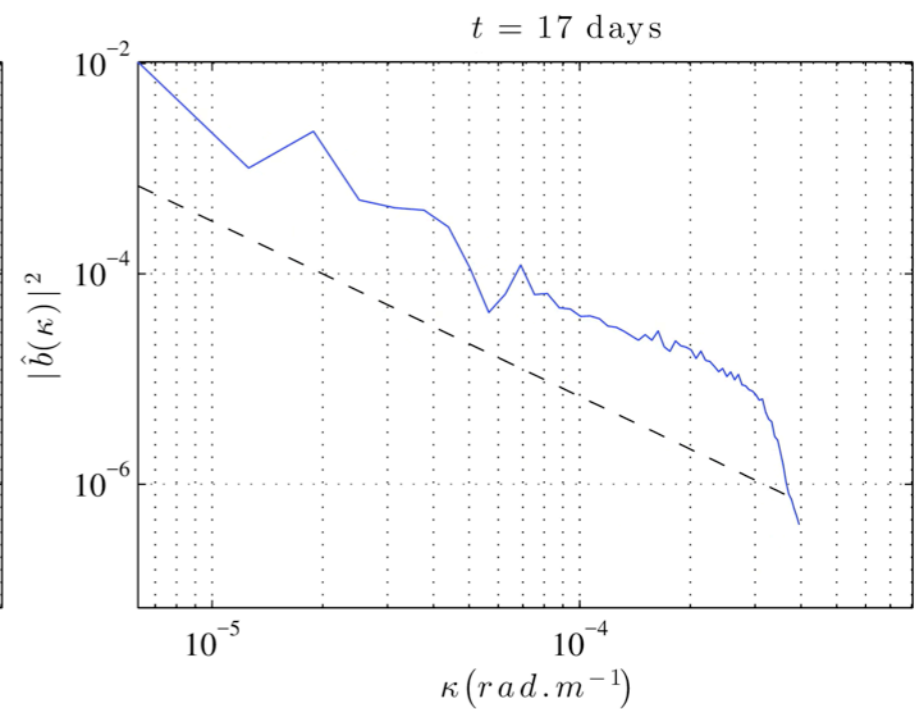
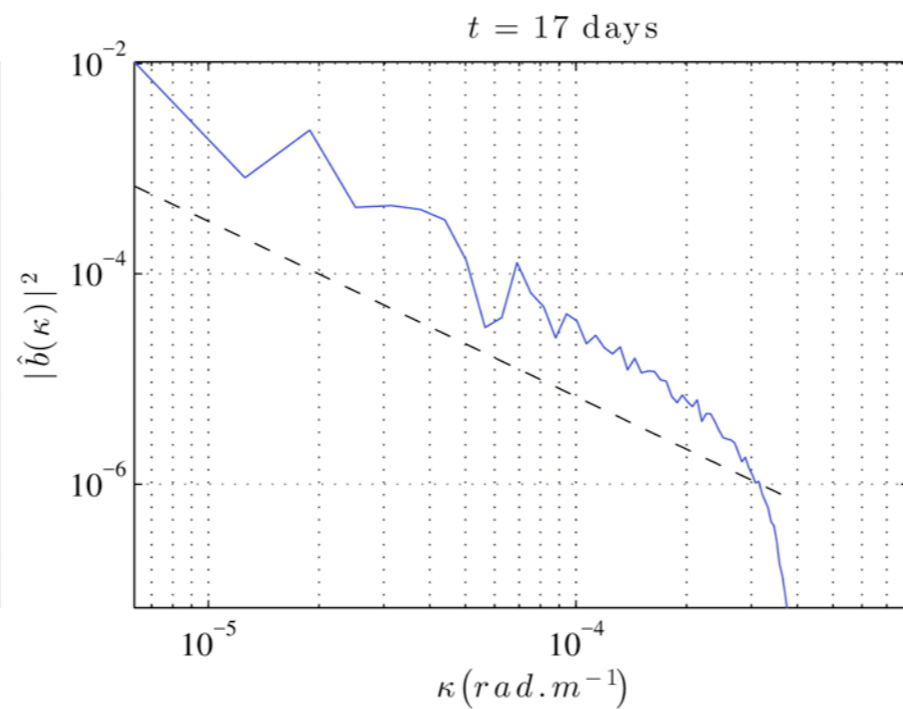
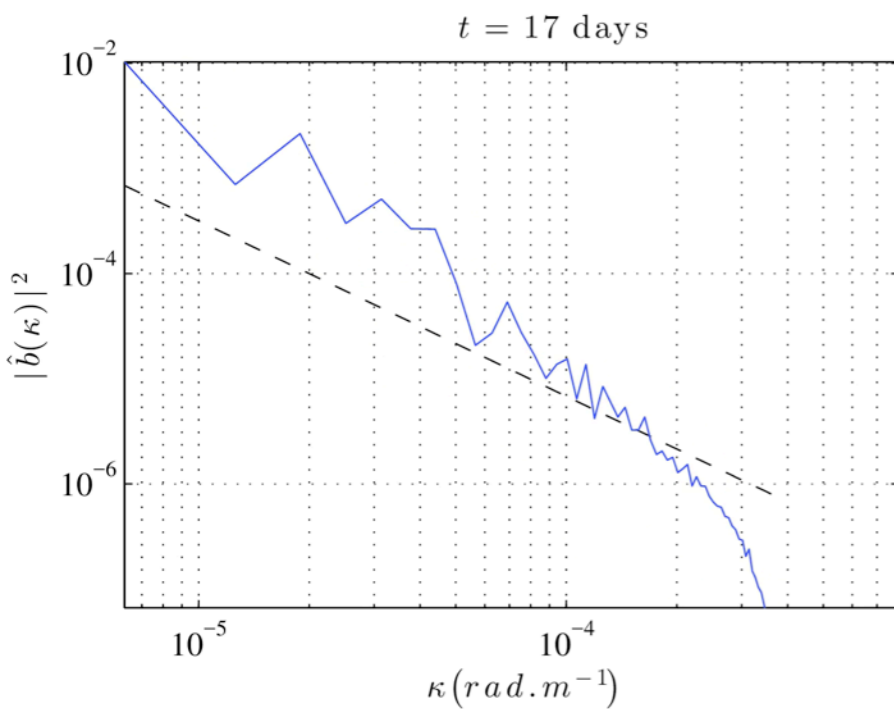
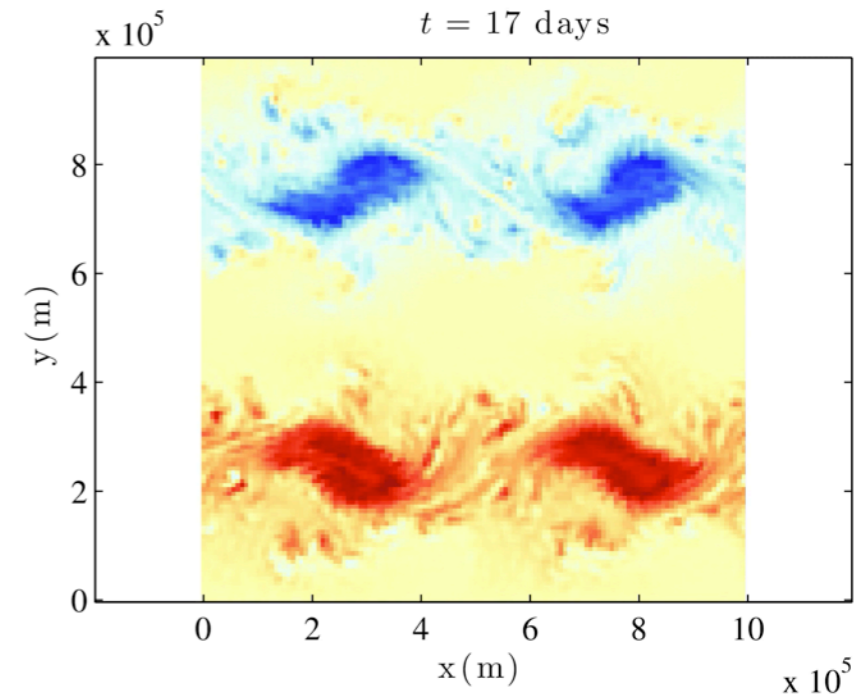
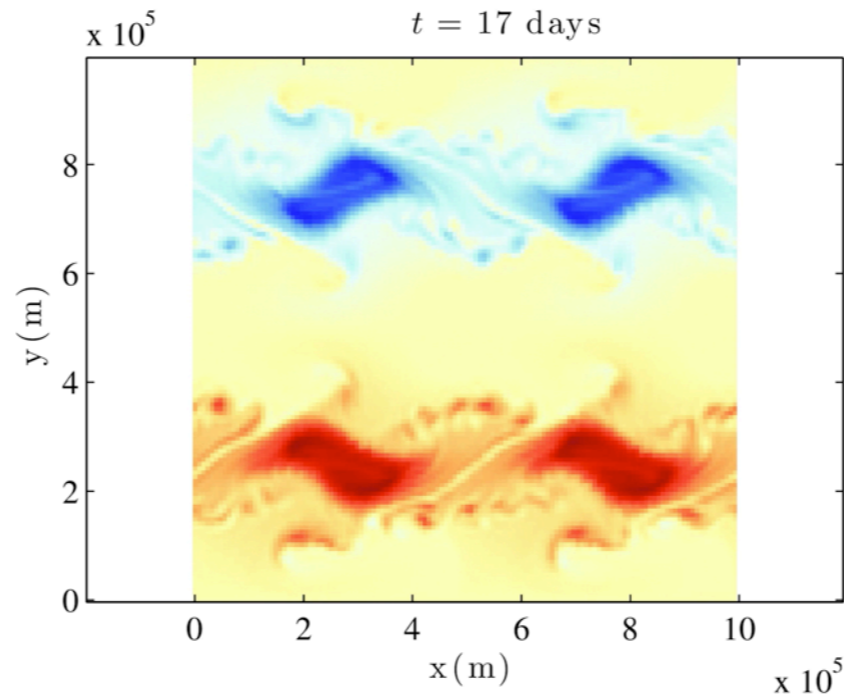
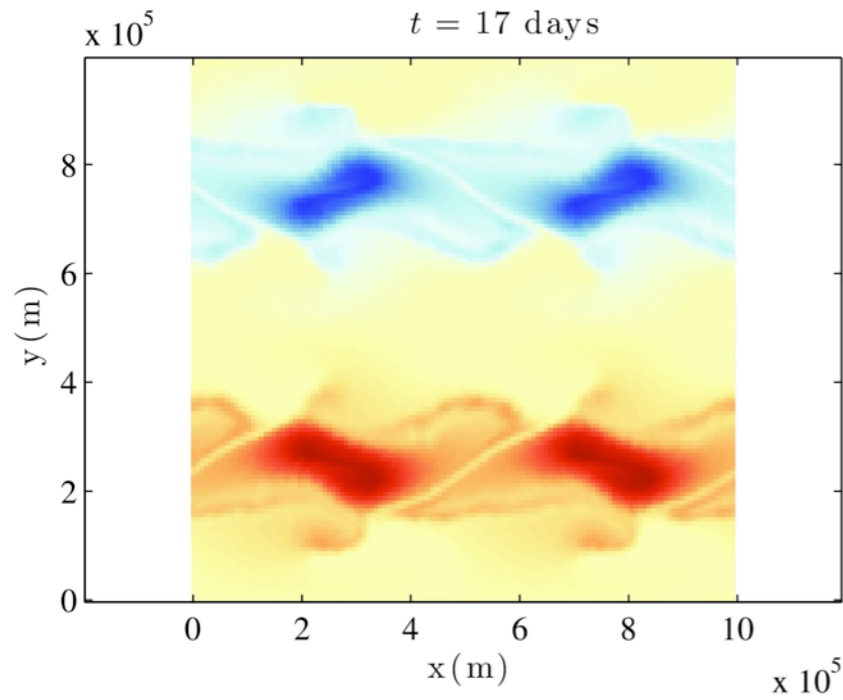
**Deterministic 128x128**

**Deterministic 512x512**

**Stochastic 128x128**



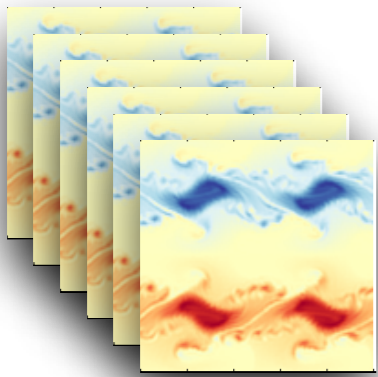
# One realization



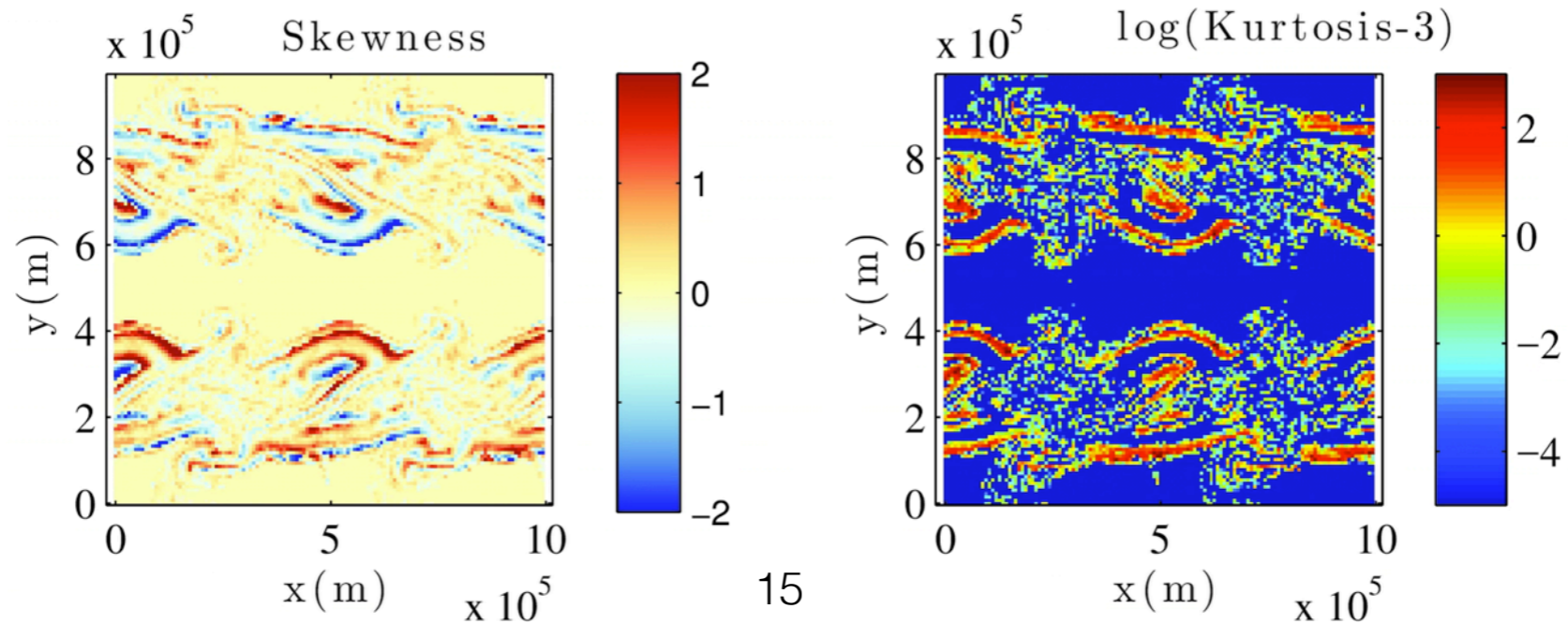
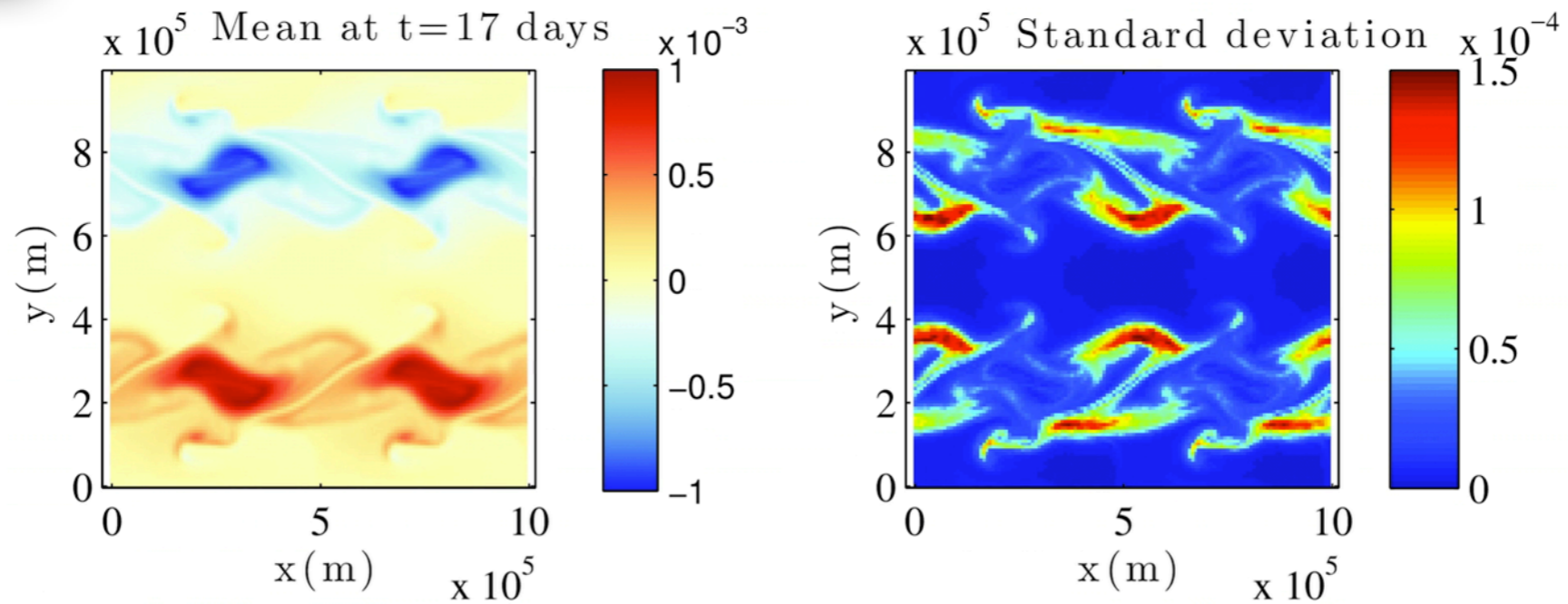
**Lower noise**

**Our model**

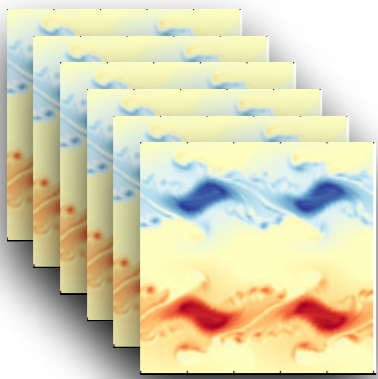
**Larger noise**



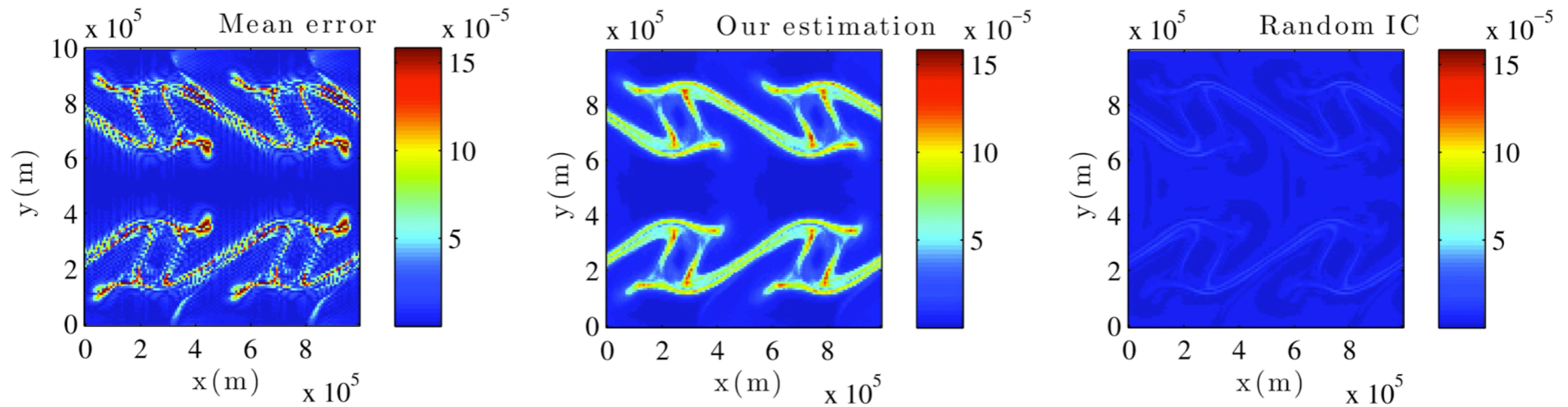
# Ensemble



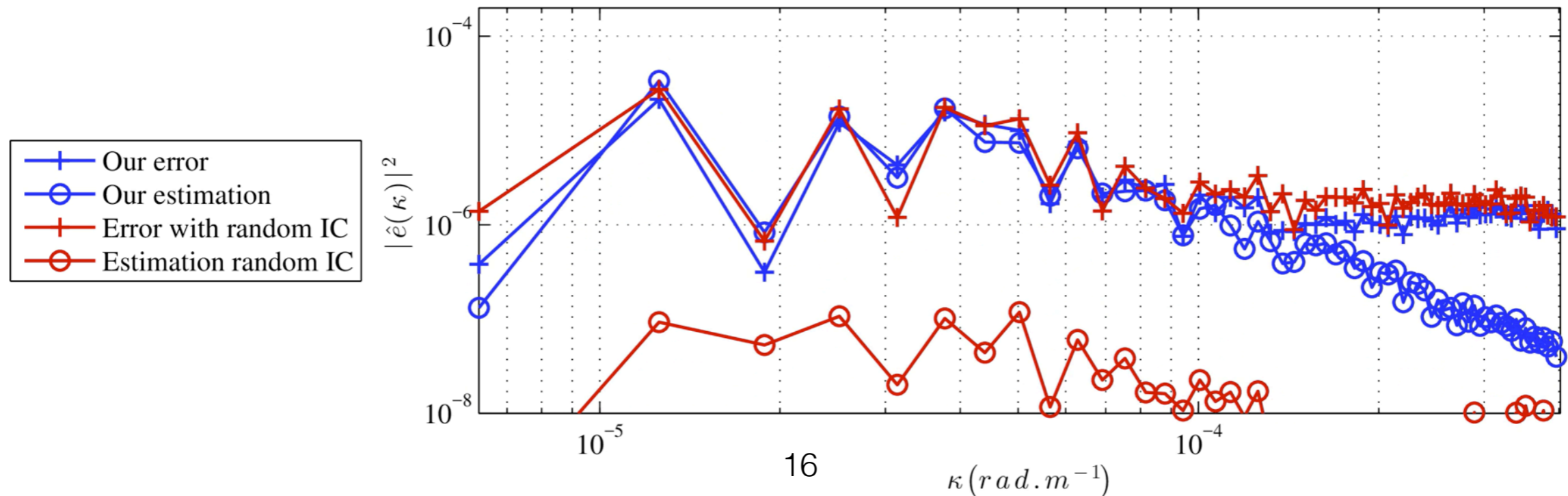




# Ensemble



Spectrum of the errors and its estimation at  $t=12$  days



# Conclusion

# Conclusion

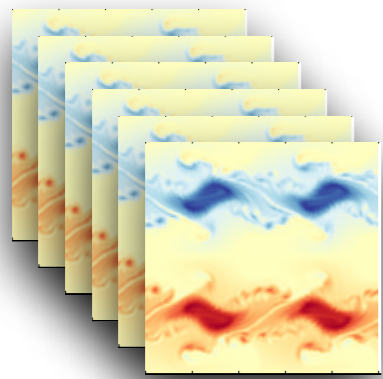
- Random transport applicable to any dynamics
- Better small scales
- Estimate position and amplitude of errors
- Extreme events
- Likely scenarios
- under Strong Uncertainty:  
Simple 2D description of frontolysis/frontogenesis

Thank you for your attention

Code SQG MU:  
link from Fluminance website - V. Resseguier

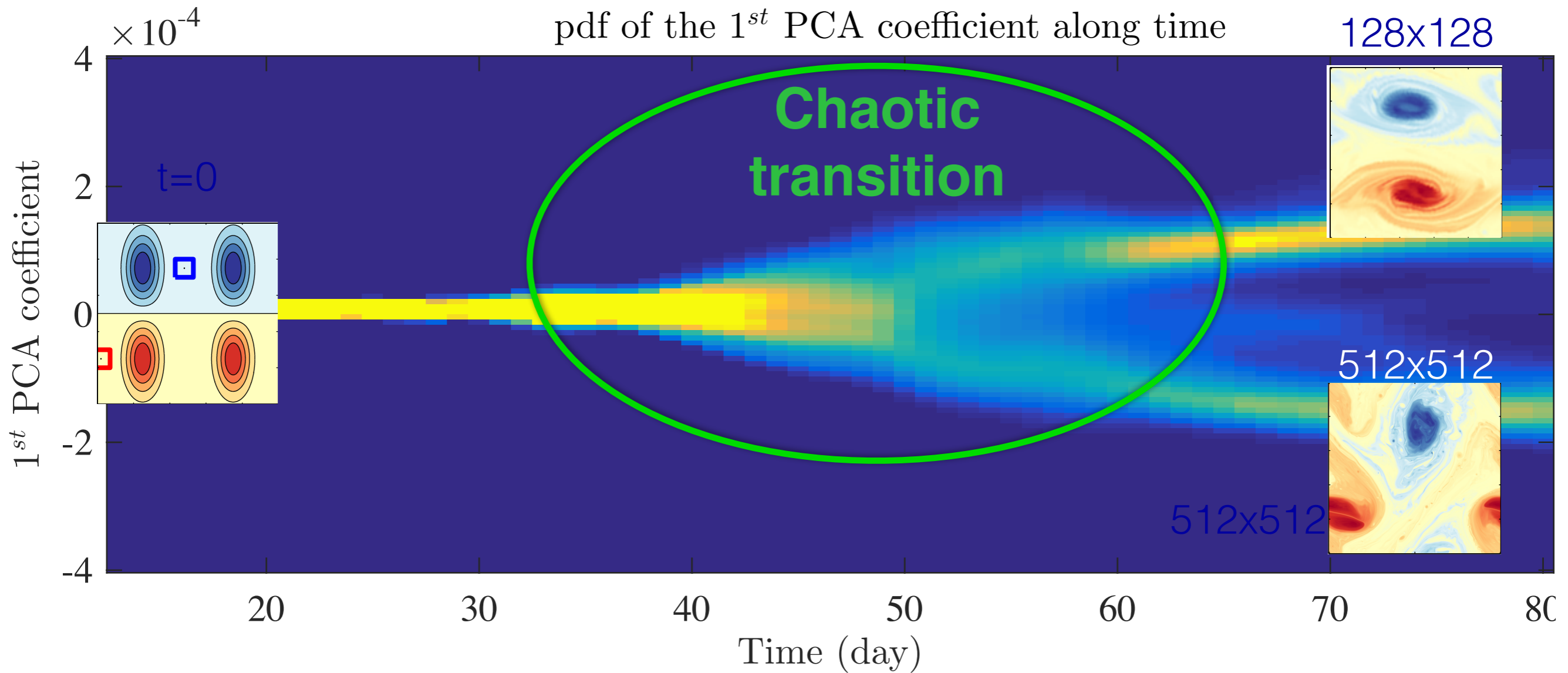
# Likely SQG scenarios

tracked by SQG MU



# Ensemble

t=70 days



# SQG under Strong Uncertainty

SQG SU

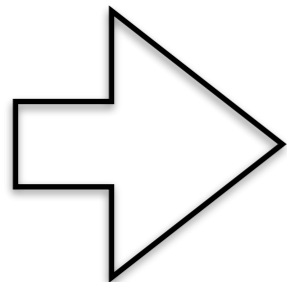
# Mesoscale divergence

Geostrophic balance

$$\mathbf{f} \times \mathbf{u} = -\frac{1}{\rho_b} \nabla p'$$

Horizontal  
Diffusion

$$+ \frac{a}{2} \Delta \mathbf{u}$$

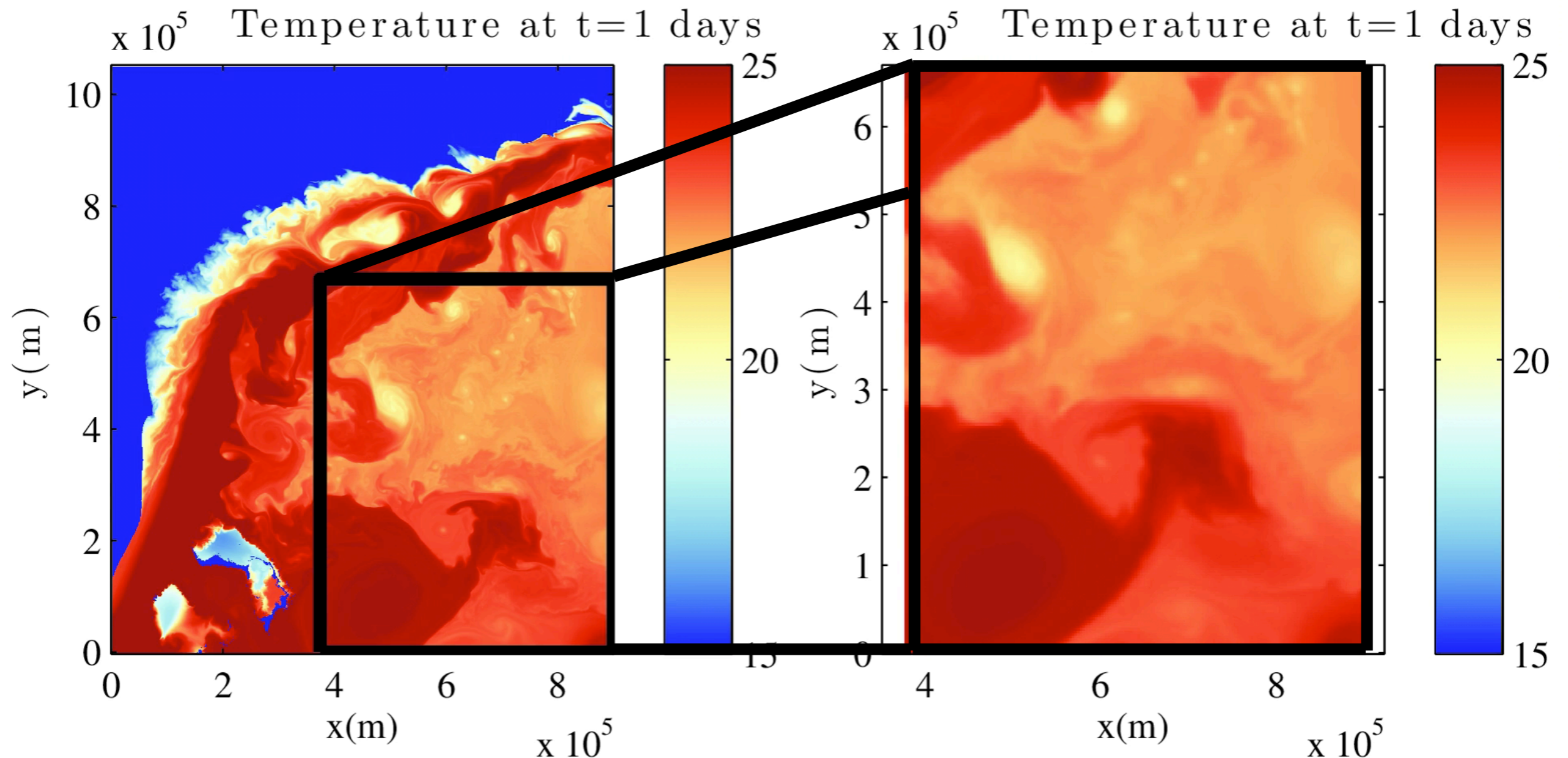


$$\nabla \cdot \mathbf{u} \propto \Delta \nabla^\perp \cdot \mathbf{u}$$

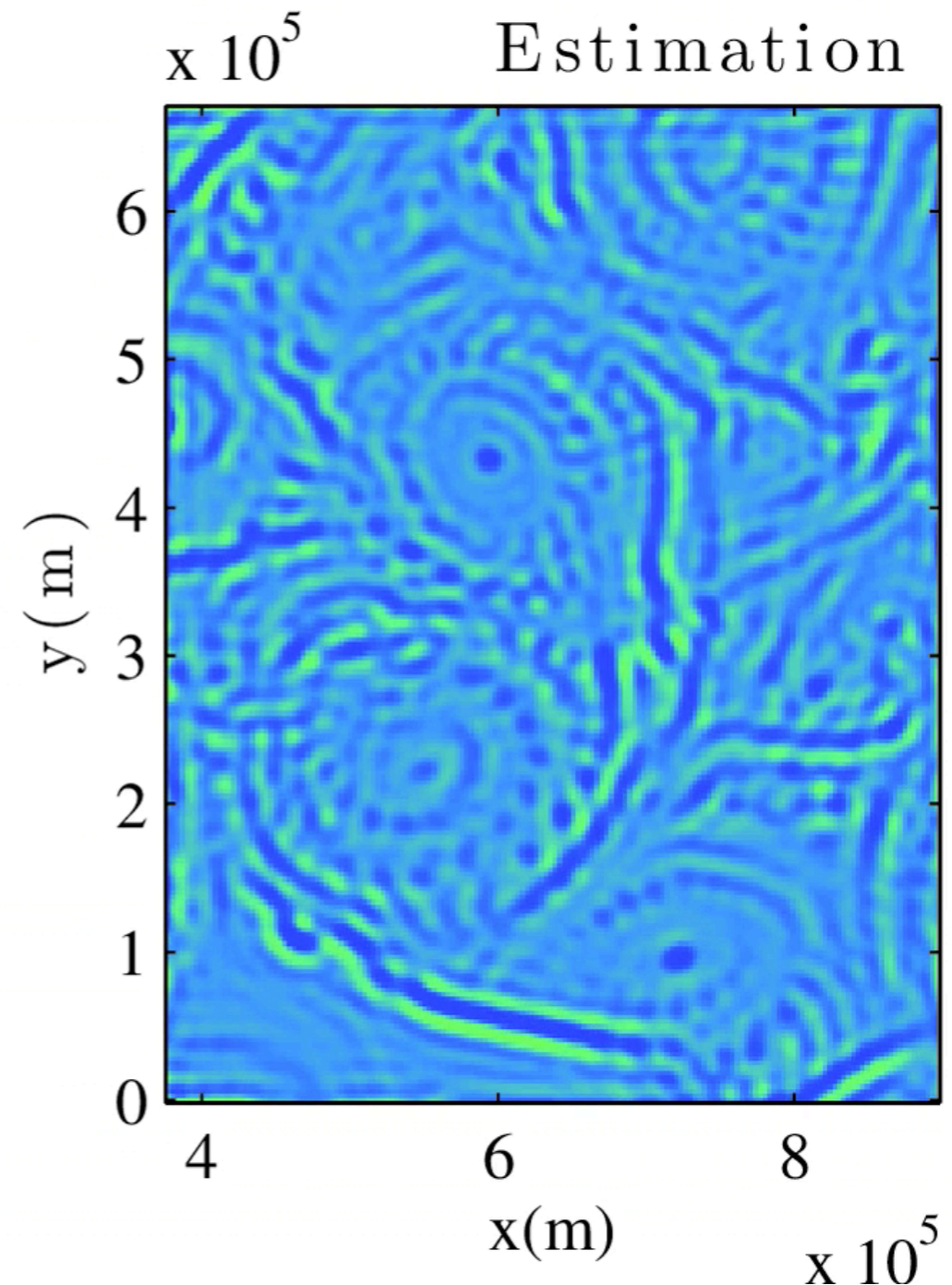
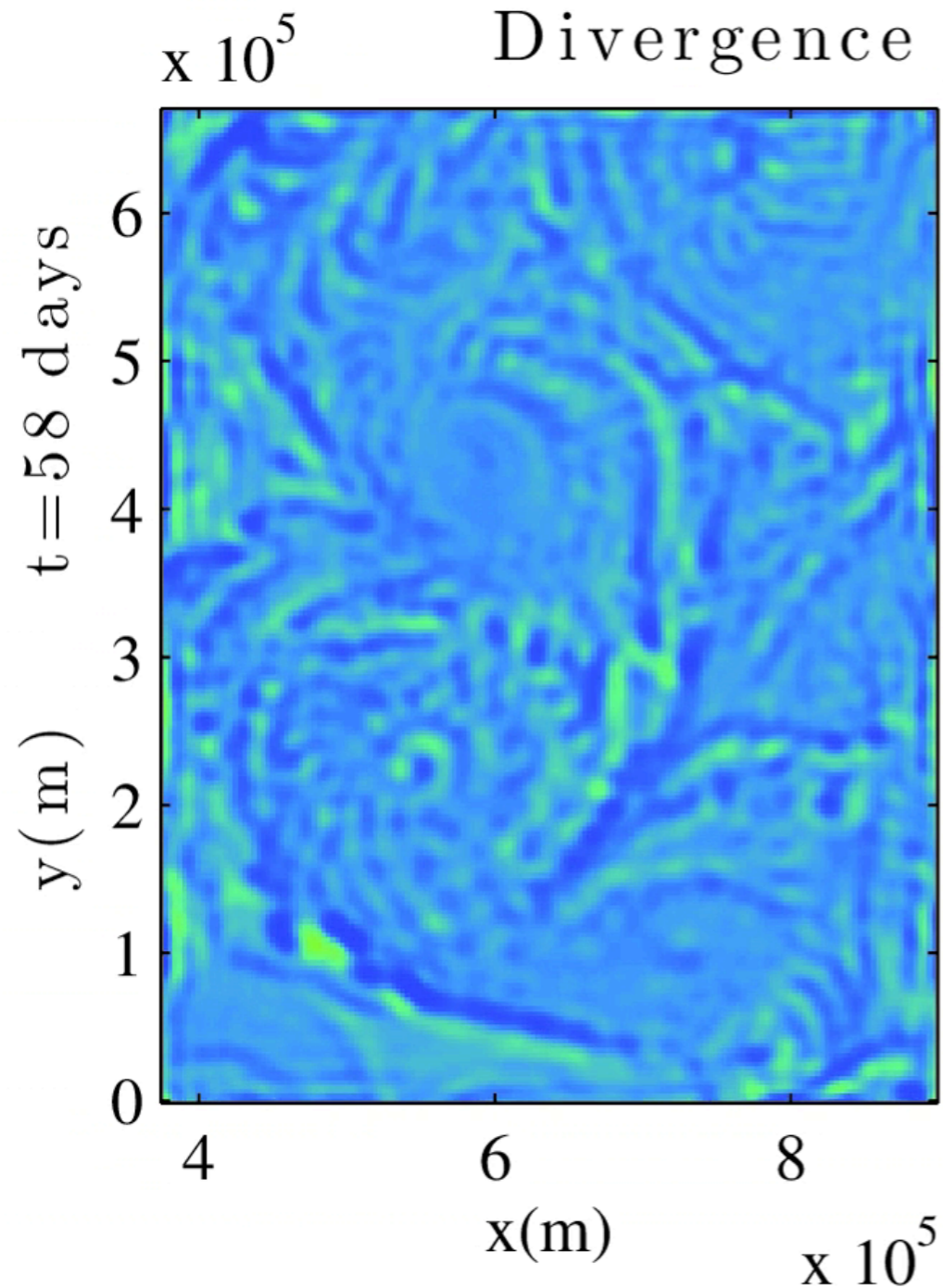


# Filtering of model outputs:

Gula, Jonathan, M. Jeroen Molemaker, and James C. McWilliams  
"Gulf Stream dynamics along the southeastern US seaboard."  
*Journal of Physical Oceanography* 45.3 (2015): 690-715.



# Spatial test



# Spectral test

