



HAL
open science

Reduced order model from a new stochastic decomposition of fluid flow

Valentin Resseguier, Etienne Mémin, Bertrand Chapron

► **To cite this version:**

Valentin Resseguier, Etienne Mémin, Bertrand Chapron. Reduced order model from a new stochastic decomposition of fluid flow. UNCECOMP International Conference on Uncertainty Quantification in Computational Sciences and Engineering, May 2015, Hersonissos, Greece. hal-01238289

HAL Id: hal-01238289

<https://inria.hal.science/hal-01238289>

Submitted on 9 Nov 2016

HAL is a multi-disciplinary open access archive for the deposit and dissemination of scientific research documents, whether they are published or not. The documents may come from teaching and research institutions in France or abroad, or from public or private research centers.

L'archive ouverte pluridisciplinaire **HAL**, est destinée au dépôt et à la diffusion de documents scientifiques de niveau recherche, publiés ou non, émanant des établissements d'enseignement et de recherche français ou étrangers, des laboratoires publics ou privés.

UNCECOMP 2015

Reduced order model from a new stochastic decomposition of fluid flow

Valentin Resseguier, Etienne Mémin

(INRIA Rennes, France)

& Bertrand Chapron (IFREMER Brest, France)

25 mai 2015

PLAN

STOCHASTIC FLUID DYNAMIC MODEL

Classical Large Eddy approach

Stochastic Navier-Stokes model

REDUCED MODEL

RESULTS

CONCLUSION

CLASSICAL LARGE EDDY APPROACH

Numericians approach :

$$\frac{\partial \bar{T}}{\partial t} + \nabla \cdot (\bar{T} \bar{u}) = \nabla \cdot (-\overline{u' T'})$$

CLASSICAL LARGE EDDY APPROACH

Numericians approach :

$$\frac{\partial \bar{T}}{\partial t} + \nabla \cdot (\bar{T} \bar{u}) = \nabla \cdot (-\overline{u' T'}) = \frac{\sigma^2}{2} \Delta \bar{T}$$

CLASSICAL LARGE EDDY APPROACH

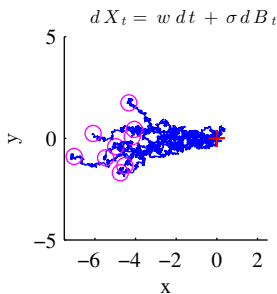
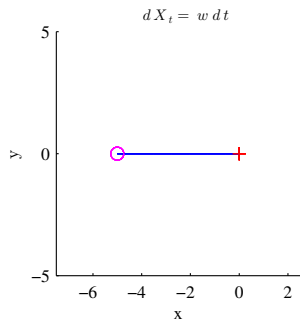
Numericians approach :

$$\frac{\partial \bar{T}}{\partial t} + \nabla \cdot (\bar{T} \bar{u}) = \nabla \cdot (-\overline{u' T'}) = \frac{\sigma^2}{2} \Delta \bar{T} \rightarrow \text{Eddy diffusivity}$$

CLASSICAL LARGE EDDY APPROACH

Numericians approach :

$$\frac{\partial \bar{T}}{\partial t} + \nabla \cdot (\bar{T} \bar{u}) = \nabla \cdot (-\overline{u' T'}) = \frac{\sigma^2}{2} \Delta \bar{T} \rightarrow \text{Eddy diffusivity}$$



$\frac{dB_t}{dt}$ = white noise, and B_t = Brownian motion

STOCHASTIC NAVIER-STOKES MODEL

Notations :

- ▶ $u = w + \frac{\sigma dB}{dt}$
- ▶ w continuous and differentiable w.r.t. time : large scales
- ▶ $\frac{\sigma dB}{dt}$ Gaussian and discontinuous w.r.t. time : small scales

$$\sigma(x, t) \frac{dB_t}{dt} \triangleq \int_{\Omega} \underbrace{\check{\sigma}(x, z, t)}_{\text{kernel}} \underbrace{\frac{dB_t}{dt}(z)}_{\text{white noise}} dz$$

- ▶ Local covariance matrix

$$a(x, t) \triangleq \sigma(x, t) \sigma^t(x, t) = \int_{\Omega} \check{\sigma}(x, z, t) \check{\sigma}^t(x, z, t) dz$$

STOCHASTIC NAVIER-STOKES MODEL

Theorem

$$\frac{\partial w_i}{\partial t} + (w^* \cdot \nabla) w_i = \nabla \cdot \left(\frac{a}{2} \nabla w_i \right) - \frac{1}{\rho} \frac{\partial p}{\partial x_i} + \nu \Delta w,$$

$$\text{with } w^* = w - \frac{(\nabla \cdot a)^T}{2}$$

Applications :

- ▶ Large eddies simulation
- ▶ Uncertainty quantification
- ▶ Filtering
- ▶ Downscaling
- ▶ Mixing diagnostics

...

PLAN

STOCHASTIC FLUID DYNAMIC MODEL

REDUCED MODEL

Principle / Notations

Additional reduction : time sub-sampling

Our approach

Estimation of a

RESULTS

CONCLUSION

PRINCIPLE / NOTATIONS

- ▶ Galerkin projection from POD modes :

$$u(x, t) \approx \sum_{i=0}^n b_i(t) \phi_i(x)$$

- ▶ Chronos : b_i

- ▶ $\frac{\partial u}{\partial t} = I + L(u) + C(u, u)$ (a PDE) becomes :

$$\forall i, \frac{db_i}{dt} = \left(\int_{\Omega} \phi_i \cdot I \right) + \sum_{p=0}^n \left(\int_{\Omega} \phi_i \cdot L(\phi_p) \right) b_p + \sum_{p,q=0}^n \left(\int_{\Omega} \phi_i \cdot C(\phi_p, \phi_q) \right) b_p b_q \quad (\text{ODEs})$$

ADDITIONAL REDUCTION : TIME SUB-SAMPLING

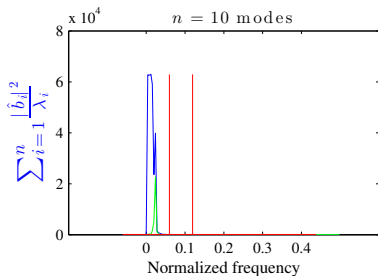
Large time scale approach

we keep only necessary information for the resolved modes :

$$\frac{db_i}{dt} = i_i + l_{\bullet i} b + b^T c_{\bullet \bullet i} b$$

Nyquist-Shanon criterion for sub-sampling :

$$\frac{f_s}{2} = 2 \max_i f_{max}(b_i) \text{ meets Shanon.}$$



OUR APPROACH

Our approach :

▶ $u = w + \frac{\sigma dB}{dt}$

▶ $w = \sum_{i=0}^n b_i \phi_i$
(resolved modes)

▶ $v_{res} = u - w = \sum_{i=n+1}^N b_i \phi_i$ a realization of $\frac{\sigma dB}{dt}$
(aliased \Rightarrow partially decorrelated in time)

ESTIMATION OF a CONSTANT IN TIME

Local covariance matrix estimated by :

$$a(x) \approx \Delta t \frac{1}{N} \sum_{k=1}^N v_{res}(x, t_k) v_{res}^T(x, t_k)$$

ESTIMATION OF a DEPENDING OF TIME

We look for a decomposition of $a = \sum_{i=0}^n b_i(t)z_i(x)$.

Estimation based on Stochastic Calculus (Genon-Catalot 1992) :

$$z_i(x) = \int_0^T \frac{b_i}{T\lambda_i} a dt \approx \Delta t \frac{1}{N} \sum_{k=1}^N \frac{b_i(t_k)}{\lambda_i} v_{res}(x, t_k) v_{res}^T(x, t_k)$$

PLAN

STOCHASTIC FLUID DYNAMIC MODEL

REDUCED MODEL

RESULTS

Data

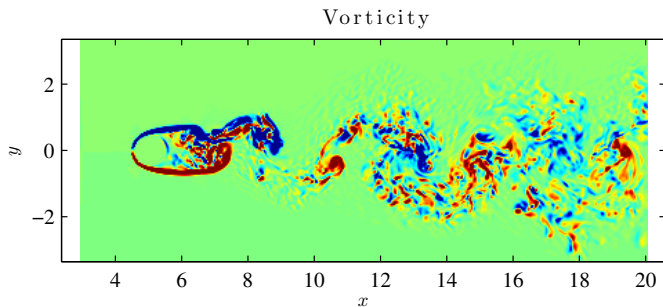
Reconstruction of temporal modes

CONCLUSION

DATA

Wake behind a cylinder

- ▶ at Reynolds 3900 : 3D flow



RECONSTRUCTIONS OF TEMPORAL MODES

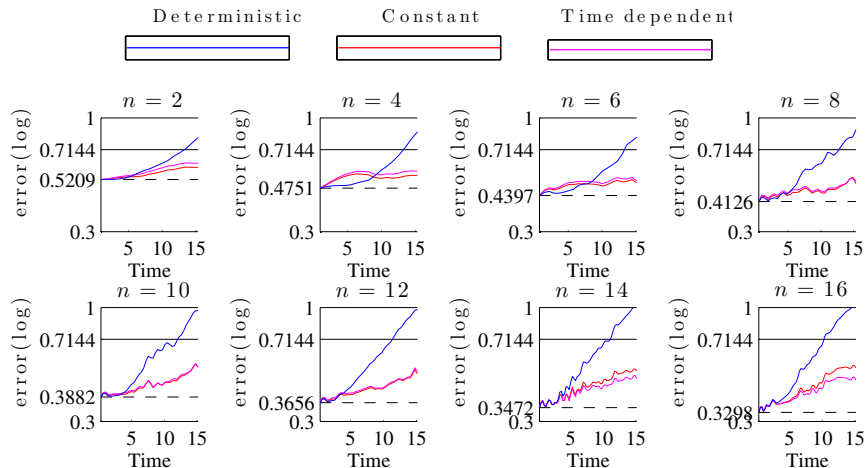


FIGURE : $Re=3900$ (3D flow), a constant and in the span of *Chronos* b_i .

PLAN

STOCHASTIC FLUID DYNAMIC MODEL

REDUCED MODEL

RESULTS

CONCLUSION

SUMMARY

- ▶ Complete fluid dynamics model
based on Physics and Stochastic Calculus :
Generalization of empirical approaches
- ▶ Local covariance matrix of the small-scales $a(x, t)$
constant or projected on *Chronos*
- ▶ Good results without tuning :
Stabilization and correction of the frequency drift

FURTHER WORK

- ▶ Test on DNS data with more available snapshots
- ▶ $a = \sum_{i \leq j} b_i b_j z_{ij}(x) \rightarrow$ Inverse problem estimation
- ▶ Generalization :
 w continuous but not differentiable w.r.t. time
 Energy conserving model for UQ

$$\frac{\partial w_i}{\partial t} + (w^* \cdot \nabla) w_i = \nabla \cdot \left(\frac{a}{2} \nabla w_i \right) - \frac{1}{\rho} \frac{\partial p}{\partial x_i} + \nu \Delta w$$

$$- \underbrace{\left(\frac{\sigma dB_t}{dt} \cdot \nabla \right) w_i}_{\text{multiplicative noise}} + \underbrace{\nu \Delta \frac{\sigma_i dB_t}{dt}}_{\text{additive noise}}$$

QUESTIONS

Thank you for your attention

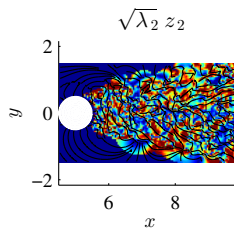
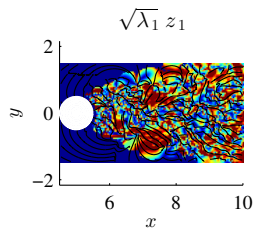
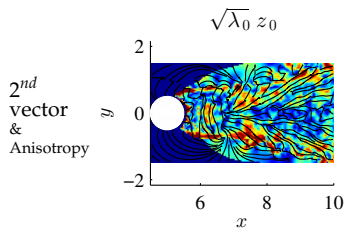
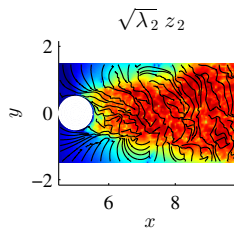
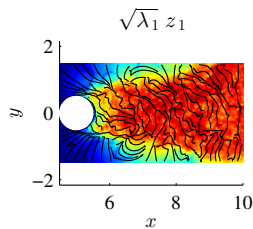
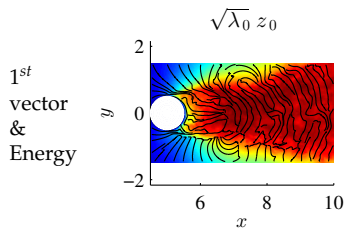
ESTIMATION OF a DEPENDING OF TIME

$$\forall x \in \mathbb{R}^d, d\tilde{X}_t^x \stackrel{\Delta}{=} \sigma(x, t)dB_t$$

$$\begin{aligned} z_i(x) &= \int_0^T \frac{b_i(t)}{\lambda_i T} a(x, t) dt \\ &= \int_0^T \frac{b_i(t)}{\lambda_i T} d \langle \tilde{X}^x, (\tilde{X}^x)^t \rangle_t \quad (\text{since } a \stackrel{\Delta}{=} \sigma \sigma^t) \\ &= \mathbb{P} - \lim_{\Delta t \rightarrow 0} \sum_{t_k=0}^T \frac{b_i(t_k)}{\lambda_i T} \left(\tilde{X}_{t_{k+1}}^x - \tilde{X}_{t_k}^x \right) \left(\tilde{X}_{t_{k+1}}^x - \tilde{X}_{t_k}^x \right)^t \end{aligned}$$

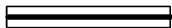
$$v_{res}(x, t) \Delta t \quad \text{a realization of} \quad d\tilde{X}_t^x \stackrel{\Delta}{=} \sigma(x, t)dB_t$$

- ▶ Estimator with good statistical properties (Genon-Catalot 1992) (when the projection subset is well chosen)

TURBULENCE MODES z_i : EIGENVALUES/EIGENVECTORS : RE=3900

RECONSTRUCTIONS OF TEMPORAL MODES

Real values



Deterministic



Stochastic

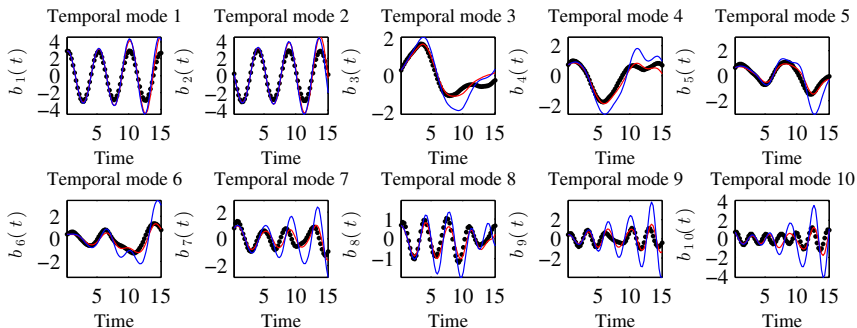
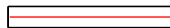


FIGURE : $n=10$, $Re=3900$ (3D flow), a constant in time.