



**HAL**  
open science

## Reconstruction of super-resolution ocean pCO<sub>2</sub> and air-sea fluxes of CO<sub>2</sub> from satellite imagery in the Southeastern Atlantic

Ismael Hernández-Carrasco, Joël Sudre, Véronique Garçon, A Paulmier, B Dewitte, S Illig, I Dadou, Hussein Yahia, Christoph Garbe, M González-Dávila, et al.

► **To cite this version:**

Ismael Hernández-Carrasco, Joël Sudre, Véronique Garçon, A Paulmier, B Dewitte, et al.. Reconstruction of super-resolution ocean pCO<sub>2</sub> and air-sea fluxes of CO<sub>2</sub> from satellite imagery in the Southeastern Atlantic. *Biogeosciences*, 2015, pp.20. hal-01193339

**HAL Id: hal-01193339**

<https://inria.hal.science/hal-01193339v1>

Submitted on 4 Sep 2015

**HAL** is a multi-disciplinary open access archive for the deposit and dissemination of scientific research documents, whether they are published or not. The documents may come from teaching and research institutions in France or abroad, or from public or private research centers.

L'archive ouverte pluridisciplinaire **HAL**, est destinée au dépôt et à la diffusion de documents scientifiques de niveau recherche, publiés ou non, émanant des établissements d'enseignement et de recherche français ou étrangers, des laboratoires publics ou privés.

# Reconstruction of super-resolution ocean pCO<sub>2</sub> and air-sea fluxes of CO<sub>2</sub> from satellite imagery in the Southeastern Atlantic

I. Hernández-Carrasco<sup>1</sup>, J. Sudre<sup>1</sup>, V. Garçon<sup>1</sup>, H. Yahia<sup>2</sup>, C. Garbe<sup>3</sup>, A. Paulmier<sup>1</sup>, B. Dewitte<sup>1</sup>, S. Illig<sup>1</sup>, I. Dadou<sup>1</sup>, M. González-Dávila<sup>4</sup>, and J. M. Santana-Casiano<sup>4</sup>

<sup>1</sup>LEGOS, Laboratoire d'Études en Géophysique et Océanographie Spatiales (CNES-CNRS-IRD-UPS), 31401 Toulouse, France

<sup>2</sup>INRIA, Institut National de Recherche en Informatique et en Automatique, Bordeaux, France

<sup>3</sup>IWR, Interdisciplinary Center for Scientific Computing, University of Heidelberg, Heidelberg, Germany

<sup>4</sup>Instituto de Oceanografía y Cambio Global, Universidad de Las Palmas de Gran Canaria, 35017, Las Palmas de Gran Canaria, Spain

*Correspondence to:* I. Hernández-Carrasco  
(ismael.hernandez@legos.obs-mip.fr)

**Abstract.** An accurate quantification of the role of the ocean as source/sink of Green House Gases (GHGs) requires to access the high-resolution of the GHG air-sea flux at the interface. In this paper we present a novel method to reconstruct maps of surface ocean partial pressure of CO<sub>2</sub> (pCO<sub>2</sub>) and air-sea CO<sub>2</sub> fluxes at super resolution (4 km) using Sea Surface Temperature (SST) and Ocean Colour (OC) data at this resolution, and CarbonTracker CO<sub>2</sub> fluxes data at low resolution (110 km). Inference of super-resolution of pCO<sub>2</sub>, and air-sea CO<sub>2</sub> fluxes is performed using novel nonlinear signal processing methodologies that prove efficient in the context of oceanography. The theoretical background comes from the Microcanonical Multifractal Formalism which unlocks the geometrical determination of cascading properties of physical intensive variables. As a consequence, a multiresolution analysis performed on the signal of the so-called singularity exponents allows the correct and near optimal cross-scale inference of GHGs fluxes, as the inference suits the geometric realization of the cascade. We apply such a methodology to the study offshore of the Benguela area. The inferred representation of oceanic partial pressure of CO<sub>2</sub> improves and enhances the description provided by CarbonTracker, capturing the small scale variability. We examine different combinations of Ocean Colour and Sea Surface Temperature products in order to increase the number of valid points and the quality of the inferred pCO<sub>2</sub> field. The methodology is validated using in-situ measurements by means of statistical errors. We obtain that mean absolute and relative errors in the inferred values of pCO<sub>2</sub> with respect to in-situ measurements

are smaller than for CarbonTracker.

## 1 Introduction

The ocean can be thought of as a complex system in which a large number of different processes (e.g. physical, chemical, biological, atmosphere-ocean interactions) interact with each other at different spatial and temporal scales (Rind, 1999). These scales extend from millimeters to thousands of kilometers and from seconds to centuries (Dickey, 2003). Recently there is a growing body of evidence that the upper few hundred meters of the oceans are dominated by submesoscale activity, covering the range 1-10 km, and that this activity is important to understand global ocean properties (Klein and Lapeyre, 2009). Accurately estimating the sources and sinks of GHGs at the air-sea interface requires to resolve these small scales (Mahadevan et al., 2004). However, the scarcity of oceanographic cruises and the lack of available satellite products for GHG concentrations at high resolution prevent us from obtaining a global assessment of their spatial variability at small scales. For example, from the in-situ ocean measurements the uncertainty of the net global ocean-atmosphere CO<sub>2</sub> fluxes is between 20 and 30% (IOCCP, 2007), and could be higher in the Oxygen Minimum Zones (OMZ) of the Eastern Boundary Upwelling Systems (EBUS) due to the extreme regional variability in these areas (Paulmier et al., 2008; Franco et al., 2014). This indeed suggests the design of proper methodologies to infer the fluxes at high

resolution from presently available satellite image data, in order to improve current estimates of gas exchanges between the ocean and the atmosphere.

60 The most commonly used methods to estimate air-sea CO<sub>2</sub> 115  
fluxes are based either on statistical methods, inverse modeling with atmospheric transport models or global coupled physical-biogeochemical models. Among others, Takahashi et al. (2002, 2009) that interpolate sea surface pCO<sub>2</sub> measurements with advanced statistical methods to provide cli- 120  
matological monthly maps of air-sea fluxes of CO<sub>2</sub> in the global surface waters at a spatial resolution of 4° × 5°. Global maps at the same spatial resolution but at higher temporal resolution (daily) have been estimated by Rödenbeck et al. (2014) by fitting the mixed-layer carbon budget equa- 125  
tion to ocean pCO<sub>2</sub> observations. An international effort to compile global surface CO<sub>2</sub> fugacity (fCO<sub>2</sub>) measurements has recently been performed and reported in Pfeil et al. (2013); Bakker et al. (2014), and interpolated by Sabine et al. 75  
(2013) generating a monthly gridded product with fCO<sub>2</sub> values in a 1° × 1° grid cell. Other statistical approaches based on the neural-network statistical method have been shown to be useful to estimate climatological and monthly 1° × 1° maps of pCO<sub>2</sub> by Landschützer et al. (2014) and Telszewski et al. (2009) respectively. Gruber et al. (2009) used inverse 135  
modeling of sources and sinks from the network of atmospheric CO<sub>2</sub> concentrations jointly with transport models. The third type of methods is based on direct computations of the air-sea CO<sub>2</sub> fluxes in coupled physical-biogeochemical models incorporating the biogeochemical processes of the 140  
carbon dioxide system. In the latter, simulated surface ocean pCO<sub>2</sub> can be constrained with available ship observations as shown by Valsala and Maksyutov (2010).

Another new avenue to infer air-sea GHG fluxes is through inverse modeling applied to vertical column den- 145  
sities (VCD) extracted from satellite spectrometers, i.e. Greenhouse gases Observing SATellite (GOSAT) and SCanning Imaging Absorption SpectroMeter for Atmospheric CHarographY (SCIAMACHY), at low spatial resolution (Garbe and Vihharev, 2012). A global estimation of CO<sub>2</sub> fluxes in 150  
the ocean has been derived at 1° × 1° spatial resolution from global atmosphere observations used into a data assimilation system for CO<sub>2</sub> called CarbonTracker (Peters et al., 2007). In all these datasets the rather coarse spatial resolution leads to 100  
uncertainties in the actual estimate of the sources and sinks 155  
of CO<sub>2</sub>, calling for an improvement of the resolution of CO<sub>2</sub> flux estimates.

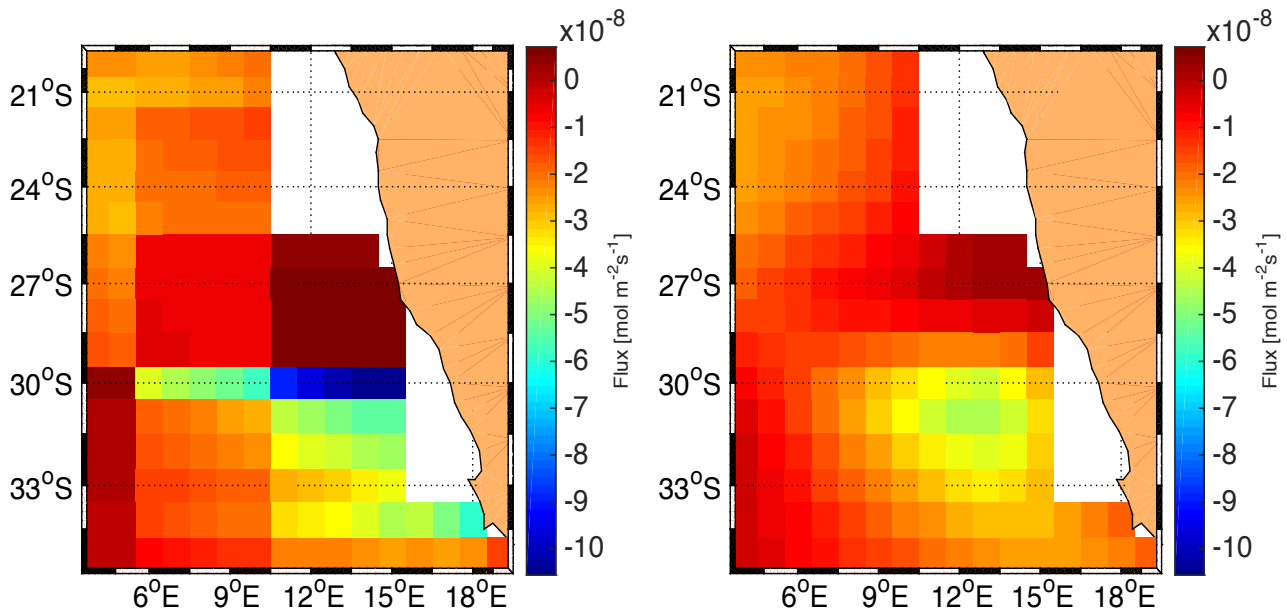
In this regard, the last few years have seen the appearance of interesting new developments on multiscale processing techniques for complex signals coming from Earth Ob- 160  
servations (Yahia et al., 2010). These methods make use of phenomenological descriptions of Fully Developed Turbulence (FDT) in nonlinear physics, motivated by the values taken on by Reynolds number in ocean dynamics. As predicted from the theory and also observed in the ocean, in 110  
a turbulent flow the coherent vortices (eddies) interact with

each other stretching and folding the flow, generating smaller eddies or small scale filaments and transition fronts characterized by strong tracer gradients (Frisch, 1995). This results in a cascade of energy from large to smaller scales. Therefore the inherent cascade of tracer variance under the turbulent flow dominates the variability of the geometrical distribution of tracers such as temperature or dissolved inorganic carbon, as shown by Abraham et al. (2000), Abraham and Bowen (2002) and Turiel et al. (2005). Geometrical organization of the flow linked to the energy cascade allows study of its properties from the geometrical properties of any tracer for which the advection is the dominant process. The relationships between the cascade and the multifractal organization of FDT has been set up either in a canonical (Arneodo et al., 1995; Frisch, 1995) or microcanonical (Turiel et al., 2005; Bouchet and Venaille, 2012) descriptions. Within the microcanonical framework (MMF) the singularity exponents unlock the geometrical realization of the multifractal hierarchy. Setting up a multiresolution analysis on the singularity exponents computed in the microcanonical framework allows near optimal cross scale inference of physical variables (Sudre et al., 2015).

These advances open a wide field of theoretical and experimental research and their use in the analysis of complex data coming from satellite imagery has been proven innovative and efficient, showing a particular ability to perform fusion of satellite data acquired at different spatial resolutions (Pottier et al., 2008) or to reconstruct from satellite data current maps at submesoscale resolution (Sudre et al., 2015). In this paper we apply these novel techniques emerging from nonlinear physics and nonlinear signal processing for inferring submesoscale resolution maps of the air-sea CO<sub>2</sub> fluxes and associated sinks and sources from available remotely sensed data. We use this methodology to derive cross scale inference according to the effective cascade description of an intensive variable, through a fusion process between appropriate physical variables which account for the flux exchanges between the ocean and the atmosphere. This approach is not only very novel in signal processing, but also connects the statistical descriptions of acquired data with their physical content. This makes the approach useful to reconstruct all GHGs.

Unlike the Lagrangian approach to reconstruct tracer maps at high resolution (Berti and Lapeyre, 2014), our methodology works in the Eulerian framework and we do not need to know the trajectories of oceanic tracer particles but only high resolution instantaneous maps of tracers which can be directly obtained from remote sensing.

The Eastern Boundary Upwelling Systems (EBUS) and Oxygen Minimum Zones (OMZs) are likely to contribute significantly to the gas exchange between the ocean and the atmosphere (Hales et al., 2005; Waldron et al., 2009; Paulmier et al., 2011). The Benguela upwelling system, the region of interest in this study, is one of the highest productivity areas in the world ocean and may contribute signif-



**Fig. 1.** Estimated fluxes from CarbonTracker data. Shown are the results on the Benguela upwelling system on March 23, 2006. Left are the CarbonTracker fluxes, right are our results.

icantly to the global air-sea CO<sub>2</sub> flux. Some studies using data from in-situ samples have found the region of Benguela to be an annual sink of CO<sub>2</sub> with -1.70 (in 1995 and 1996) and -2.02Mt C/year in 2005 (Santana-Casiano et al., 2009; Monteiro, 2010), with a strong variability between 2005 and 2006 from -1.17 to -3.24 mol C/m<sup>2</sup> per year, respectively (González-Dávila et al., 2009).

This paper is organized as follows: Sect. 2 describes the datasets used as input in our algorithm. Sect. 3 is devoted to describe the methodology used through the study. Statistical description of the input datasets is presented in Sect. 4. Results of the inference method are given in Sect. 5 by providing outputs of our algorithm, then evaluating the various satellite products and assessing the performance of the method using in situ measurements.

## 2 Data

The input data combines air-sea CO<sub>2</sub> fluxes at low resolution and satellite ocean data at high resolution. To validate the method we use in-situ measurements of oceanic pCO<sub>2</sub>.

### 2.1 Input data: Air-sea CO<sub>2</sub> fluxes at low resolution

It is known that the evolution of a concentration,  $c$ , in the atmosphere is given by the advection-reaction-diffusion equation:

$$\frac{\partial c}{\partial t} = -u\nabla c + \frac{1}{\rho}\nabla(\rho T_d \nabla c) + \frac{1}{\rho}g + F, \quad (1)$$

with the wind field  $u$ , the density of the air  $\rho$ , the turbulent diffusivity tensor  $T_d$ , the chemical reaction rate  $g$  and the net flux at the air-sea interface  $F$  (Garbe et al., 2007, 2014). Using optimal control and inverse problem modeling, a map of  $F$  can be derived using Earth Observation data (Garbe and Vihhrev, 2012). It would be ideal if we could use data of atmospheric CO<sub>2</sub> concentrations from space measured by satellite sensors such as SCIAMACHY (SCanning Imaging Absorption SpectroMeter for Atmospheric CHartography) aboard ENVISAT (Environmental Satellite), in orbit since 2002, and GOSAT (Greenhouse gases Observing SATellite), in orbit since January 2009, to derive the air-sea flux. However SCIAMACHY and GOSAT sampling is not dense enough with very sub-optimal sampling of the Benguela upwelling system. This led us to use data of CO<sub>2</sub> fluxes from CarbonTracker (<http://www.esrl.noaa.gov/gmd/ccgg/carbontracker/>) at spatial resolution of 1° x 1° (~100 km x ~100 km) (Peters et al., 2007). CarbonTracker system assimilates and integrates a diversity of atmospheric CO<sub>2</sub> data into a computation of surface CO<sub>2</sub> fluxes, using a state-of-the-art atmospheric transport model and an ensemble Kalman filter.

We obtain the partial pressure of ocean CO<sub>2</sub> by using the equation of the net flux in the air-sea interface:

265 **2.2 Input data: Satellite Ocean data at high resolution**

$$215 \quad F = \alpha K (p_{CO_2}^{air} - p_{CO_2}^{ocean}), \quad (2)$$

where  $\alpha$  is the gas solubility, which depends on SST and 270 Sea Surface Salinity SSS, and  $K$ , the gas transfer velocity, is a function of wind, salinity, temperature, sea state, which can be obtained from satellite data. To estimate the gas transfer velocity we use the well accepted relationships for the 220 transfer velocity in air-sea gas exchange from wind speed, 275 the parametrization developed by Sweeney et al. (2007). The CO<sub>2</sub> gas solubility is derived according to Weiss (1974). Input data for SST are derived from OSTIA (Operational SST and Sea Ice Analysis system) product, SSS are derived from LEGOS (Laboratoire d'Etudes en Géophysique et Océanographie Spatiales) product compiled by Delcroix et al. (2011) and winds from Cross Calibrated Multi-Platform 280 Ocean surface winds from JPL (Jet Propulsion Laboratory) PO.DAAC (Physical Oceanography Distributed Active Archive Center, <http://podaac.jpl.nasa.gov/>). We assume a  $p_{CO_2}^{air}$  to be constant in the domain of study and it is derived from the Globalview-CO2 product of the Cooperative 285 Atmospheric Data Integration Project coordinated by Carbon Cycle Greenhouse Gases Group (GLOBALVIEW, 2013) ([www.esrl.noaa.gov/gmd/ccgg/globalview/](http://www.esrl.noaa.gov/gmd/ccgg/globalview/)). We use values taken at the closest sea-level station to the Benguela, located at Ascension Island (7.97°S and 14.40°W) as our reference 290 atmospheric CO<sub>2</sub>. The partial pressure of CO<sub>2</sub> is determined from its mole fraction ( $xCO_2$ ), using the following equation (Dickson et al., 2007):  $pCO_2 = xCO_2 \cdot p$ , where  $p$  is the total pressure of the mixture. We assume this pressure to be close to 1 atm for the conversion following ORNL/CDIAC 105 report (Program developed for CO<sub>2</sub> Systems calculation). 295

245 The raw data of CarbonTracker fluxes of CO<sub>2</sub> in the area of interest are strongly binned and exhibit strong gradients across those bins. This turns out to be suboptimal for our super-resolution approach. Garbe and Vihharev (2012) have developed an optimal control approach to invert interfacial fluxes using a simplified inverse problem of atmospheric transport. The inverse problem is solved using the Galerkin finite element method and the Dual Weighted Residual (DWR) method for goal-oriented mesh optimization. An adaptation of this approach has been applied to the 305 CarbonTracker data set. However, the estimations are expensive and computing results for all the time frames of interest was infeasible. Therefore, an anisotropic diffusion-based approach has been applied to the raw fluxes of the CarbonTracker data set. The diffusion is steered by the direction of 260 the low-altitude wind field. The results thus retain the structure of the CarbonTracker fluxes very well while suppressing artifacts. Examples of this process are shown in Fig. 1. Results are comparable to the physically more accurate approach of Garbe and Vihharev (2012).

Oceanic pCO<sub>2</sub> is a complex signal depending, at any spatial resolution, on sea surface temperature, salinity, chlorophyll concentration, dissolved inorganic carbon, alkalinity and nutrients concentrations. Both the biological pump, with chlorophyll a as a proxy, and the physical pump, driven by the temperature and salinity (e.g. solubility, water mass), govern the evolution of pCO<sub>2</sub> in the surface ocean.

We use here the high resolution satellite ocean data for chlorophyll a, as a proxy for the biological carbon pump and for Sea Surface Temperature (SST), as a proxy for the thermodynamical pump, (see Section 3.2 for more details on the connection of these oceanic variables).

**2.2.1 Chlorophyll-a (Chl-a) from Ocean Colour (OC)**

In this study we use Chl-a concentrations from two different Ocean Colour products: MERIS and GLOBCOLOUR. MERIS (MEdium Resolution Imaging Spectrometer Instrument) is on board the ENVISAT satellite and provides daily maps of ocean colour at 1/24° (~4 km). Ocean colour from GLOBCOLOUR product is obtained by merging data provided by MODIS (MODerate Resolution Imaging Spectroradiometer), MERIS and SeaWiFS instruments. The Chl-a concentration is provided daily and at the spatial resolution equal to 1/24° (~4 km). Ocean Colour data have been regridded at 1/32° by linear interpolation. GLOBCOLOUR products are generated using different merging methods (see the GLOBCOLOUR Product User Guide document in [http://www.globcolour.info/CDR\\_Docs/GlobCOLOUR\\_PUG.pdf](http://www.globcolour.info/CDR_Docs/GlobCOLOUR_PUG.pdf)):

- **Averaging from single-instrument chl-a concentration.** In this case CHL1 daily level 3 (L3) products are generated for each instrument using the corresponding L2 data. At the beginning of the averaging process, an inter-calibration correction is applied to the MODIS and SeaWiFS (Sea-Viewing Wide Field-of-View Sensor) CHL1 daily L3 products in order to get compatible concentrations with respect to the MERIS sensor. The merged CHL1 concentration is then computed as the average of the MERIS, MODIS and SeaWiFS quantities, both as: an **arithmetic mean** or a **weighted average value (AVW)**. In the AVW method, values of CHL1 are weighted by the relative error for each sensor on the results of the simple averaging.
- **Garver-Siegel-Maritorena model (GSM).** In this method single-instrument daily L3 fully normalized water leaving radiances (individually computed for each band) and their associated error bars are used by the GSM model. These radiances are not inter-calibrated before incorporation in the model (see Maritorena and Siegel (2005) for more details).

315 Snapshots of both Chl-a fields derived from MERIS and  
 GSM GLOBCOLOUR corresponding to September 21, 2006 365  
 are displayed in Fig. 2 a) and b), respectively. This example  
 shows the clear difference in the remote sensing coverage be-  
 tween the two products. The merged GLOBCOLOUR prod-  
 320 uct yields a more covered Chl field than the one obtained  
 from MERIS. The merging algorithm in GLOBCOLOUR  
 product tends to decrease the missing points induced by  
 clouds for each individual instrument.

### 2.2.2 Sea Surface Temperature (SST)

325 We use SST derived from OSTIA and MODIS products.  
 OSTIA (Operational SST and Sea Ice Analysis system) is  
 a new analysis of SST that uses satellite data provided by  
 the GHRSSST (Group for High Resolution SST) project, to- 375  
 gether with in situ observations to determine the SST with a  
 global coverage and without missing data. The datasets are  
 330 produced daily and at spatial resolution of 1/20° (~6km)  
 performing a multi-scale optimal interpolation using corre-  
 lation length scales from 10 km to 100 km (more details in  
 Donlon et al. (2012)). The other SST product used in this  
 335 study is derived from MODIS (MODerate Resolution Imag-  
 ing Spectroradiometer) sensors carried on board the Aqua  
 satellite since December 2002. This SST product is derived  
 from the MODIS mid-infrared (IR) and thermal IR channels 385  
 and is available in various spatial and temporal resolutions.  
 340 We use Level-3 daily maps of SST at the spatial resolution  
 of 1/24° (~4 km) (Savtchenko et al., 2004). In Fig. 3 a) and  
 b), we show one snapshot of SST from OSTIA and MODIS  
 respectively corresponding to the same day on September 21, 390  
 2006. In the case of OSTIA products, the SST field is fully  
 345 covered of points while for MODIS products there are gaps  
 due to cloudiness. On other hand, MODIS product offers a  
 more detailed visualization of the small structures. All SST  
 data have been regridded at 1/32° by bilinear interpolation.

### 2.3 Validation data: in-situ measurements

350 Among the available data in SOCAT version 2 (Bakker et al.,  
 2014) (Surface Ocean CO<sub>2</sub> Atlas, <http://www.socat.info>)  
 over the 2000-2010 period in our region of interest we find  
 the following cruises with pCO<sub>2</sub> measurements:

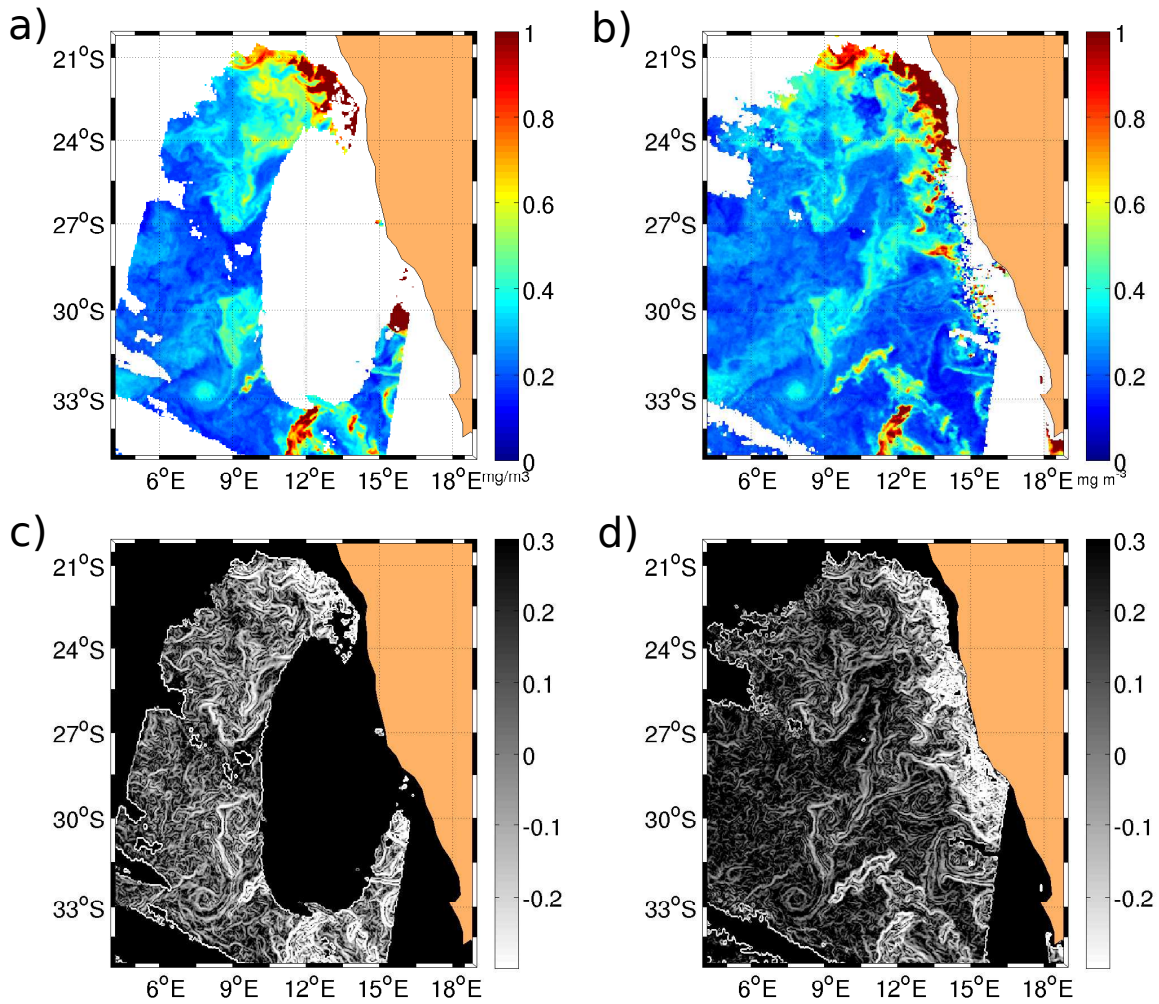
- 355 – **2000**, one cruise: *ANT-18-1*
- **2004**, one cruise: *0404SFC-PRT*
- **2005**, five cruises: *QUIMA2005-0804*, *QUIMA2005-*  
*0821*, *QUIMA2005-0922*, *QUIMA2005-1202*, 405  
*QUIMA2005-1220*
- 360 – **2006**, nine cruises: *GALATHEA*, *QUIMA2006-0326*,  
*QUIMA2006-0426*, *QUIMA2006-0514*, *QUIMA2006-*  
*0803*, *QUIMA2006-0821*, *QUIMA2006-0921*, 410  
*QUIMA2006-1013*, *QUIMA2006-1124*

- **2008**, seven VOS cruises: *QUIMA2008-1*,  
*QUIMA2008-2*, *QUIMA2008-3*, *QUIMA2008-4*,  
*QUIMA2008-5*, *QUIMA2008-6*, *QUIMA2008-7*
- **2010**, one cruise: *ANT27-1*

The small number of cruises found in one decade (24  
 370 cruises) shows that the scarcity of cruise in the Benguela  
 region is a fact. This indeed demonstrates the crucial need  
 of developing a robust method to infer high resolution pCO<sub>2</sub>  
 from space. Moreover for some of these cruises, for instance,  
 the track of GALATHEA cruise is too close to the coast and  
 is out of the original CarbonTracker domain. Due to this re-  
 striction we only document the offshore conditions of this  
 upwelling system. Owing to the relatively large number of  
 cruises during 2005, 2006 and 2008 (a total of 20 cruises,  
 representing 83% of all available cruise data from 2000  
 through 2010), in this validation, we focus the analysis on  
 the set of QUIMA-cruises during 2005 (QUIMA2005), 2006  
 (QUIMA2006) and 2008 (QUIMA2008) and we present the  
 global analysis using all available cruises during these three  
 years. Santana-Casiano et al. (2009) analyzed this data to  
 study the sea surface pCO<sub>2</sub>, fCO<sub>2</sub> and CO<sub>2</sub> air-sea fluxes  
 offshore of the Benguela upwelling system between 2005  
 and 2006 (for each month from July 2005 up to November  
 2006) and González-Dávila et al. (2009) extended the study  
 including cruises data from 2007 to 2008. The QUIMA line  
 crosses the region between 5°S and 35°S, with all the cruises  
 following the same track.

## 3 Method

The idea behind the methodology hinges on the fundamen-  
 tal discovery of a simple functional dependency between  
 the transitions - those being measured by the dimension-  
 less values of the singularity exponents computed within the  
 framework of the Microcanonical Multifractal Formalism -  
 of the respective physical variables under study : SST, Ocean  
 Colour and oceanic partial pressure (pCO<sub>2</sub>). With that func-  
 400 tional dependency being adequately fitted into a linear re-  
 gression model, it becomes possible to compute, at any given  
 time, a precise evaluation of pCO<sub>2</sub> singularity exponents us-  
 ing SST, Ocean Colour and low resolution acquired pCO<sub>2</sub>.  
 Once these singularity exponents are computed, they gener-  
 ate a multiresolution analysis from which low resolution  
 pCO<sub>2</sub> can be cross-scale inferred to generate a high resolu-  
 tion pCO<sub>2</sub> product. In this study we choose SST and Chl, and  
 not other variables such as Sea Surface Height, because we  
 focus on the use of physical variables which are correlated  
 spatially and temporally to pCO<sub>2</sub> and that can be obtained  
 from satellite at high resolution.



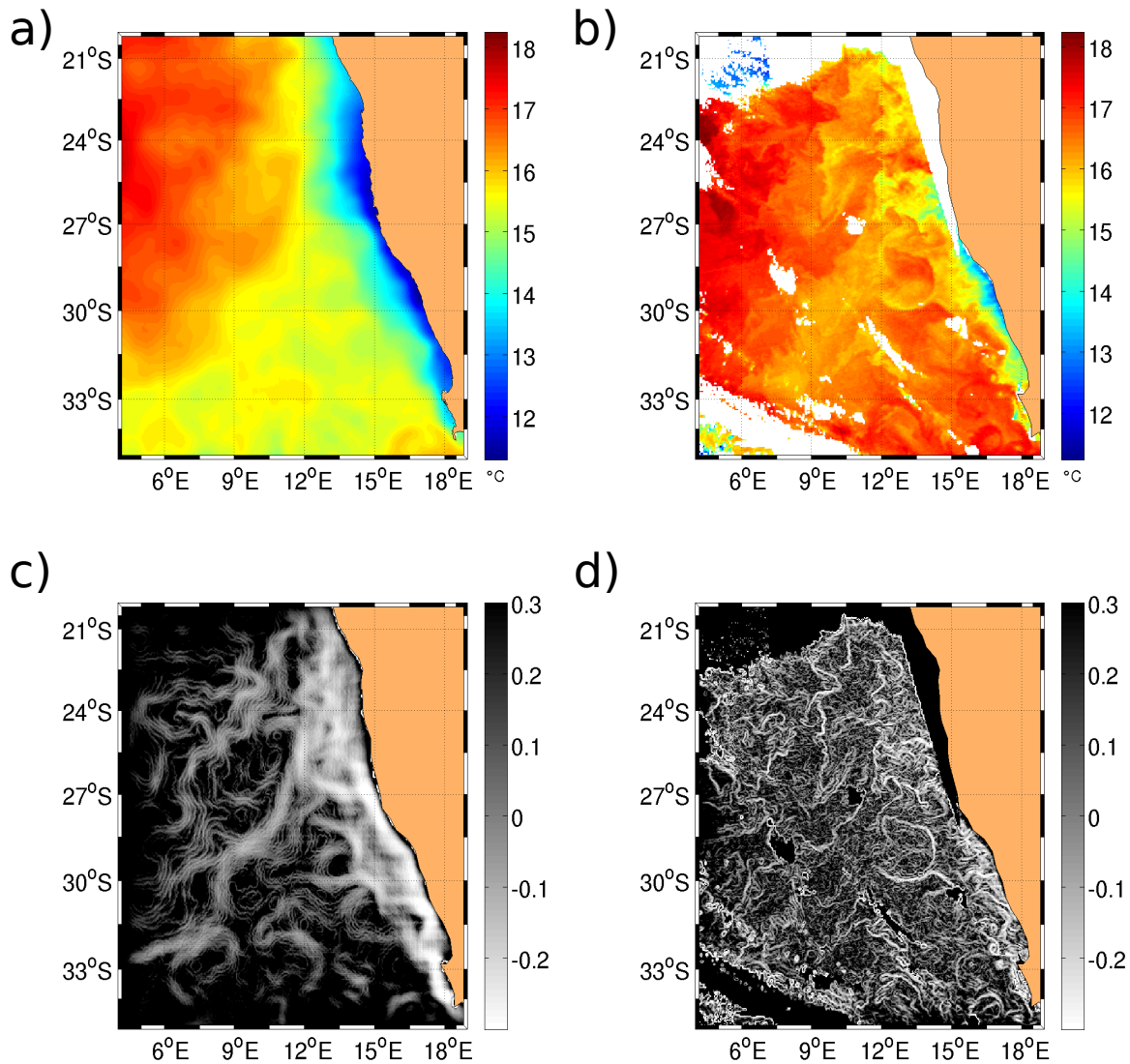
**Fig. 2.** Snapshot of Chl-a fields corresponding to September 21, 2006, regridded at  $1/32^\circ$  of spatial resolution from MERIS (a) and GSM GLOBCOLOUR (b). c) and d) are the spatial distribution of Singularity Exponents of the Chl-a plotted in a) and b) respectively

### 3.1 Singularity exponents and the multifractal hierarchy of turbulence

In the ocean, the turbulence causes the formation of unsteady eddies on many scales which interact with each other (Frisch, 1995). Most of the kinetic energy of the turbulent motion is contained in the large scale structures. The energy cascades from the large scale structures to smaller scale structures by an inertial and essentially inviscid mechanism. This process continues, creating smaller and smaller structures which produces a hierarchy of eddies. Moreover, the ocean is a system displaying scale invariant behavior, that is, the correlations of variables do not change when we zoom in or we zoom out the system, and can be represented by power-laws in particular, with the scaling exponents  $h$ .

It can be shown that the scaling exponents are the values taken on by localized singularity exponents, which can be computed at high precision in the acquired data using the Microcanonical Multifractal Formalism. Hence, within that framework, the multifractal hierarchy of turbulence, defined by a continuum of sets  $\mathcal{F}_h$  indexed by scaling exponents  $h$ , is obtained as the level sets of the geometrically localized singularity exponents.

We will not review here the details in the computation of the singularity exponents  $h(\mathbf{x})$ , leaving the reader to consult references (Turiel et al., 2005, 2008; Pont et al., 2011b; Maji and Yahia, 2014; Sudre et al., 2015) for an effective description of an algorithm able to compute the  $h(\mathbf{x})$  at every point  $\mathbf{x}$  in a signal's domain.



**Fig. 3.** Snapshot of SST fields corresponding to September 21, 2006 regridded at  $1/32^\circ$  of spatial resolution from OSTIA (a) and MODIS (b). c) and d) are the spatial distribution of Singularity Exponents of the SST plotted in a) and b) respectively.

440 Some examples of the singularity exponents of Chl and  
 SST images for the different products described in Section  
 2.2 are shown in Fig. 2 c) and 2 d) and Fig. 3 c) and 3 d), re-  
 spectively. As compared to the corresponding images of Chl<sub>450</sub>  
 445 and SST showed in Fig. 2 a) and 2 b) and Fig. 3 a) and 3  
 b), one can see the ability of the singularity exponents to un-  
 veil the cascade structures arisen by tracer-gradient variances  
 hidden in satellite images.

### 3.2 Functional dependencies between the singularity exponents of intensive physical variables

455 Another important idea implemented in the methodology is  
 the coupling of the physical information contained in SST  
 and OC images with the ocean pCO<sub>2</sub>. For instance, it is  
 known, that marine primary production is a key process in  
 the oceanic carbon cycling, and variations in the concentra-  
 tion of phytoplankton biomass can be related to variations  
 in the carbon concentrations. Surface temperature is also re-  
 lated to the gas solubility in the ocean, and areas with high  
 temperatures are more suitable for releasing CO<sub>2</sub> to the at-



mosphere. We have studied the relationship of SST and Chl-a variables with pCO<sub>2</sub> using the outputs of a coupled Regional Ocean Modeling System (ROMS) with the BIOgeochemical model of the Eastern Boundary Upwelling System (BIOEBUS) (Gutknecht et al., 2013). The ROMS includes several levels of nesting and composed grids, which makes it an ideal model for the basis of our methodology in working in two spatial resolutions. BIOEBUS has been developed for the Benguela to simulate the first trophic levels of the Benguela ecosystem functioning and also to include a more detailed description of the complete nitrogen cycle, including denitrification and anammox processes as well as the oxygen cycle and the carbonate system. This model coupled to ROMS has been also shown to be skillful in simulating many aspects of the biogeochemical environment in the Peru upwelling system (Montes et al., 2014). When one compares SST and Chl with pCO<sub>2</sub> one finds undetermined functional dependency. However, when comparing their corresponding singularity exponents one obtains a clear simpler dependency. This is due to the fact that SST, Chl and pCO<sub>2</sub> are variables of different dimensions while singularity exponents are dimensionless quantities. These results show that there is a good correlation between the turbulent transitions given by the singularity exponents and that singularity exponents are good candidates for a multiresolution analysis performed on the three signals SST, Chl and pCO<sub>2</sub>. Furthermore, the log-histograms and singularity spectrum show that singularity exponents of pCO<sub>2</sub> images possess a multifractal character. Therefore, such signals are expected to feature cascading, multiscale and other characteristic properties found in turbulent signals as described in Turiel et al. (2008) and Arneodo et al. (1995). Consequently the use of non-linear and multiscale signal processing techniques is justified to assess the properties of the pCO<sub>2</sub> signal along the scales.

Therefore, in our methodology, the local connection between different tracer concentrations (SST and Chl-a) with pCO<sub>2</sub>, is performed in order to obtain a proxy for pCO<sub>2</sub> at high resolution by using the following linear combination of multiple linear regressions:

$$\mathcal{S}(pCO_2)(\mathbf{x}) = a(\mathbf{x})\mathcal{S}(SST)(\mathbf{x}) + b(\mathbf{x})\mathcal{S}(Chl - a)(\mathbf{x}) + c(\mathbf{x})\mathcal{S}(pCO_2^{LR})(\mathbf{x}) + d(\mathbf{x}), \quad (3)$$

where  $\mathcal{S}(pCO_2)(\mathbf{x})$  refers to the singularity exponent of pCO<sub>2</sub> at  $\mathbf{x}$ ,  $\mathcal{S}(SST)(\mathbf{x})$  to singularity exponent of SST at  $\mathbf{x}$ ,  $\mathcal{S}(Chl - a)(\mathbf{x})$  to singularity exponent of Chl-a signal at  $\mathbf{x}$ . In order to propagate the pCO<sub>2</sub> signal itself along the scales in the multiresolution analysis we introduce  $\mathcal{S}(pCO_2^{LR})$  to refer to the singularity exponent from pCO<sub>2</sub> at low resolution interpolated on the high resolution grid.  $a(\mathbf{x})$ ,  $b(\mathbf{x})$  and  $c(\mathbf{x})$  are the regression coefficients associated to singularity exponents, and  $d(\mathbf{x})$  is the error associated to the multiple-linear regression. These regression coefficients are estimated using

simulated data from the ROMS-BIOEBUS model developed for the Benguela upwelling system and described above.

Once we have introduced these coefficients in the linear combination on satellite data, we obtain a proxy for singularity exponents of pCO<sub>2</sub> at high resolution and we can perform the multiresolution analysis to infer the information across the scales.

### 3.3 Cross-scale inference of pCO<sub>2</sub> data

Among the functionals that are most commonly used to analyze the scaling properties of multifractal systems, wavelets occupy a prominent position. Wavelets projections are integral transforms that separate the relevant details of a signal at different scale levels, and since they are scale-tunable, they are appropriate to analyze the multiscale behavior of cascade processes and to represent them. However, as shown in Pottier et al. (2008), Yahia et al. (2010) and Pont et al. (2011a) not all multiresolution analyses are equivalent but the most interesting are those which are optimal with respect to inferring information along scales, in particular, in a context where information is to be propagated along the scales from low resolution to high resolution.

The effective determination of an optimal wavelet for a given category of turbulent signals is, in general, a very difficult open problem. This difficulty can be contoured by considering multiresolution analysis performed on the signal of the singularity exponents  $h(\mathbf{x})$  themselves. Indeed, since the most singular manifold (the set  $\mathcal{F}_h$  associated to the lowest singularity exponents) is associated with the highest frequencies in a turbulent signal, and since the multifractal hierarchy  $\mathcal{F}_h$  converges to this set, it is physically evident that the multifractal hierarchy corresponds to a description of the detail spaces of a multiresolution analysis performed on a turbulent signal. Consequently, designing by  $V_j$  and  $W_j$  respectively the approximation and detail spaces computed on  $\mathcal{S}(pCO_2)(\mathbf{x})$  signal, and by  $A_j$  and  $P_j$  their corresponding orthogonal projections from space  $\mathbf{L}^2(\mathbb{R}^2)$ , the following reconstruction formula:

$$A_{j-1}pCO_2 = A_jpCO_2 + P_jh \quad (4)$$

consists in reconstructing a signal across the scales using the detail spaces of the singularity exponents, hence regenerating a physical variable according to its cascade decomposition. From these ideas, which are described more fully in the paper by Sudre et al. (2015), we can deduce the following algorithm for reconstructing a super-resolution pCO<sub>2</sub> signal from available high-resolution SST, Chl-a, and low-resolution pCO<sub>2</sub>:

- i) After selecting a given area of study, compute the singularity exponents of SST, Chl and pCO<sub>2</sub> at low and high resolution from ROMS-BIOEBUS output. This is done once and then they can be used for every computation performed over the same area.

- 560 ii) Using Eq. 2 estimate ocean pCO<sub>2</sub> at low resolution:  
 $p_{CO_2}^{ocean} = p_{CO_2}^{air} - F/\alpha K$ , where:
- $F$ : air-sea surface CO<sub>2</sub> fluxes provided by Carbon-Tracker product. 610
  - $K$ : gas transfer velocity obtained by the parametrization developed by Sweeney et al, 2007, as a function of the wind. 565
  - $\alpha$ : gas solubility derived according to Weiss 1974. 615
  - $p_{CO_2}^{air}$ : provided by Globalview-CO2 product.
- 570 iii) Obtain the regression coefficients  $a, b, c$  and  $d$  of Eq. 3 for the singularity exponents obtained in step ii) 620
- iv) Calculate the singularity exponents of available satellite SST, Chl at high resolution and ocean pCO<sub>2</sub> at low resolution (step i).
- 575 v) Use coefficients obtained in step iii) and apply Eq. 3 to the singularity exponents from satellite data (step iv) to estimate a proxy of singularity exponents of high resolution ocean pCO<sub>2</sub>,  $S(pCO_2)$ . 625
- 580 vi) Using Eq. 4 reconstruct pCO<sub>2</sub> at high resolution from the multiresolution analysis computed on signal  $S(pCO_2)$  and cross-scale inference on pCO<sub>2</sub> at low resolution. 630
- vii) Use Eq. 2 to calculate air-sea CO<sub>2</sub> fluxes from the inferred pCO<sub>2</sub> obtained in step vi)

585 The methodology has been successfully applied to dual ROMS simulation data at two resolutions, obtaining a mean absolute error of pCO<sub>2</sub> reconstructed values with respect to ROMS simulated high-resolution pCO<sub>2</sub> equal to 3.2 μatm (0.89% of relative error) (V. Garçon 2014, pers. comm.).

#### 4 Preliminary analysis of Sea Surface Temperature (SST) and Chlorophyll images

590 Since the key element for the application of our inferring algorithm relies on the ability to obtain the singularity exponents and their quality, the success of our methodology applied to satellite data depends on the quality and the properties of the input data. In order to assess such properties we perform a statistical analysis of the different datasets. First, we analyze the Chl and SST Probability Distribution Functions (PDFs). In Fig. 4a) we present the PDFs for Chl from MERIS, GLOBCOLOUR-GSM and GLOBCOLOUR-AVW; the required histograms are built using daily Chl values over 2006 and 2008 at each point of the spatial grid in the area of Benguela. Each one of these PDFs is broad and asymmetric, with a small mode (i.e. the value of Chl at which the probability reaches its maximum) between 0.1 and 0.2 mg/m<sup>3</sup> and a heavy tail. The heavy tail (i.e. non-gaussianity) means that the extreme values can not be neglected. In this

case Chl values are mostly low (small mode) but there is a significant number of isolated and dispersed patches with very high Chl values producing intermittency (long tails in the PDF). Intermittency in the context of turbulence is the tendency of the probability distributions of some quantities to develop long tails, i.e. the occurrence of very extreme events.

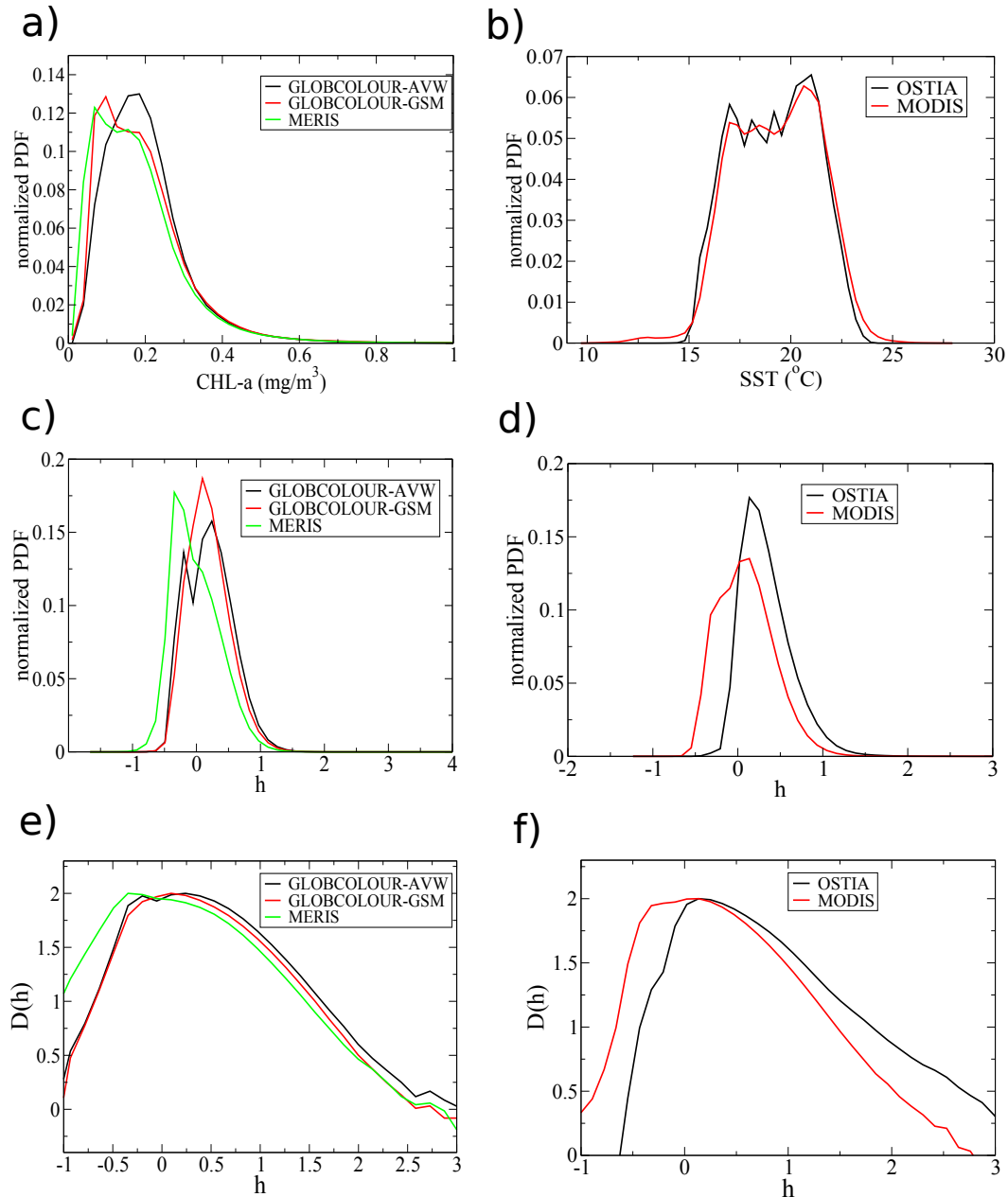
Further information can be obtained by computing statistical quantities such as standard deviation, skewness and kurtosis. Table 1 shows that standard deviation is rather the same for the three OC products while skewness and kurtosis values hugely differ. The degree of intermittency is measured by the kurtosis, the higher the kurtosis, the higher the intermittency. We found that kurtosis is almost ten times higher in GLOBCOLOUR products than in MERIS.

We have repeated the same analysis for SST datasets. The PDFs of the SST values for OSTIA and MODIS products are shown in Fig. 4b). In this case both PDFs possess similar shape, broad with the mode around 18°C with a much less deviation from gaussianity as compared to Chl values. This is confirmed with the computation of the statistical moments showed in Table 1. We obtain small values of the standard deviation and kurtosis in both cases, although slightly higher in the case of MODIS. The kurtosis is less than 3, meaning that there is not an important number of atypical values of SST and therefore weak and short tails in the PDFs.

PRODUCT	Standard Deviation	Skewness	Kurtosis
MERIS	0.116 mg/m <sup>3</sup>	2.6	21.9
GLOBCOLOUR-AVW	0.122 mg/m <sup>3</sup>	4.7	204.6
GLOBCOLOUR-GSM	0.123 mg/m <sup>3</sup>	5.3	215.4
OSTIA	1.97°C	-0.05	1.9
MODIS	2.11°C	-0.17	2.6

**Table 1.** Values of the standard deviation, skewness and kurtosis for the different products.

If turbulence is dominated by coherent structures localized in space and time, then PDFs are not Gaussian, and the kurtosis will be higher than 3. To analyze this feature we turn to the statistical analysis of the singularity exponents, which, as explained before, have the ability to unveil the cascade structures given by the tracer gradients. In Fig. 4c), it can be seen that the PDFs of the singularity exponents of the Chl for the three products are rather similar with almost the same standard deviation and with a slightly higher value of the kurtosis in the GLOBCOLOUR-GSM product, 4.3, than for MERIS, 3.1, and GLOBCOLOUR-AVW, 3.1, (see Table 2). This shows that Chl from GLOBCOLOUR-GSM product contains more extreme values which produce intermittency likely given by the strongest structures. The PDFs of the singularity exponents of the SST for OSTIA is narrower and with a highest peak than for MODIS SST. However, surprisingly the kurtosis is larger for singularity exponents of OSTIA SST, 5.1, than for MODIS SST, 3.2.



**Fig. 4.** a) Probability distribution functions (PDF) of Chl-a values derived from the three products: MERIS, GLOBCOLOUR-AVW and GLOBCOLOUR-GSM. (b) PDF of SST values for OSTIA and MODIS products. (c) PDFs for the singularity exponents of Chl for the different Ocean Colour products. (d) PDFs for the singularity exponents of Chl for the different SST products. (e) Singularity spectra corresponding to c). (f) Singularity spectra corresponding to d).

650 Finally, we obtain the singularity spectra from the empirical distributions of singularity exponents shown in Fig. 4c) and d). One can see in Fig. 4e) that for the two GLOBCOLOUR products the shape of the spectrum is closer to binomial cascade of multiplicative processes than for MERIS. 655 This is discussed in more depth in the next sections.

## 5 Results

### 5.1 Inference of super-resolution pCO<sub>2</sub> and air-sea fluxes of CO<sub>2</sub> offshore of the Benguela upwelling system

660 We now apply the methodology to infer ocean pCO<sub>2</sub> maps at super-resolution from pCO<sub>2</sub> at low resolution derived from

PRODUCT	Standard Deviation	Skewness	Kurtosis
MERIS	0.32 mg/m <sup>3</sup>	0.59	3.1
GLOBCOLOUR-AVW	0.36 mg/m <sup>3</sup>	0.40	3.1
GLOBCOLOUR-GSM	0.35 mg/m <sup>3</sup>	0.63	4.3
OSTIA	0.29°C	1.0	5.1
MODIS	0.32°C	0.5	3.2

**Table 2.** Values of the standard deviation, skewness and kurtosis of the singularity exponents for the different products.

CarbonTracker data (see Section 2) in the offshore area of the Benguela region.

Henceforward we use the following notation for the three different sources of pCO<sub>2</sub>: we refer to the values of ocean pCO<sub>2</sub> derived from CarbonTracker as pCO<sub>2</sub><sup>C<sub>track</sub></sup>, values of inferred pCO<sub>2</sub> at higher resolution from pCO<sub>2</sub> at low resolution together with computation of the cascade onto SST and chlorophyll-a concentration as pCO<sub>2</sub><sup>infer</sup>, and finally pCO<sub>2</sub><sup>insitu</sup> refers to the values of the in-situ measurements of pCO<sub>2</sub>.

For the inference we use the following three combinations of Chl and SST products described in Section 2.1: MERIS-OSTIA, GLOBCOLOUR-OSTIA, GLOBCOLOUR-MODIS. We do not include the MERIS-MODIS combination in the analysis due to the fact that the use of such satellite data results in a too drastic reduction of the coverage of the resulting pCO<sub>2</sub><sup>infer</sup> field, but using merged products offers wider coverage instead. The inferred pCO<sub>2</sub> obtained from two merged products for Chl-a, GLOBCOLOUR GSM and GLOBCOLOUR AVW is rather the same, with a slight improvement when GSM is used. Thus for the sake of clarity, we only show Figures for GLOBCOLOUR-GSM and some statistical results making comparisons with AVW. Therefore from now on we refer GLOBCOLOUR to the Chl-a obtained by the GSM merged method.

Figure 5d shows one example of pCO<sub>2</sub><sup>infer</sup> field corresponding to March 22, 2006 when we use SST data from OSTIA (Fig. 5a), Ocean Colour from GLOBCOLOUR (Fig. 5b) at high resolution and pCO<sub>2</sub> at low resolution (Fig. 5c) derived from CarbonTracker air-sea flux of CO<sub>2</sub> (Fig. 5e) and using the Eq. 2. The air-sea flux of CO<sub>2</sub> at super-resolution (Fig. 5f) is obtained from the pCO<sub>2</sub><sup>infer</sup> field and a constant value of atmospheric pCO<sub>2</sub> equal to 385.6 μatm. On this day the images of the pCO<sub>2</sub><sup>infer</sup> and fluxes of CO<sub>2</sub> combine a good coverage and a clear identification of small scale structures and gradients, as described below. Note that the air-sea CO<sub>2</sub> flux from CarbonTracker presents a large land mask close to the coast and consequently, we rather study the offshore area of the Benguela upwelling. Comparing the figures one can see that values of pCO<sub>2</sub> and CO<sub>2</sub> flux over the domain (from 4.5°E to coast (taking out the mask of the CarbonTracker domain and from 20.5°S to 35°S) vary between 360 and 380 μatm and between -4 × 10<sup>-8</sup> and 0.5 × 10<sup>-8</sup> mol C m<sup>-2</sup> s<sup>-1</sup>, respectively. The resultant flux of CO<sub>2</sub> is positive (to-

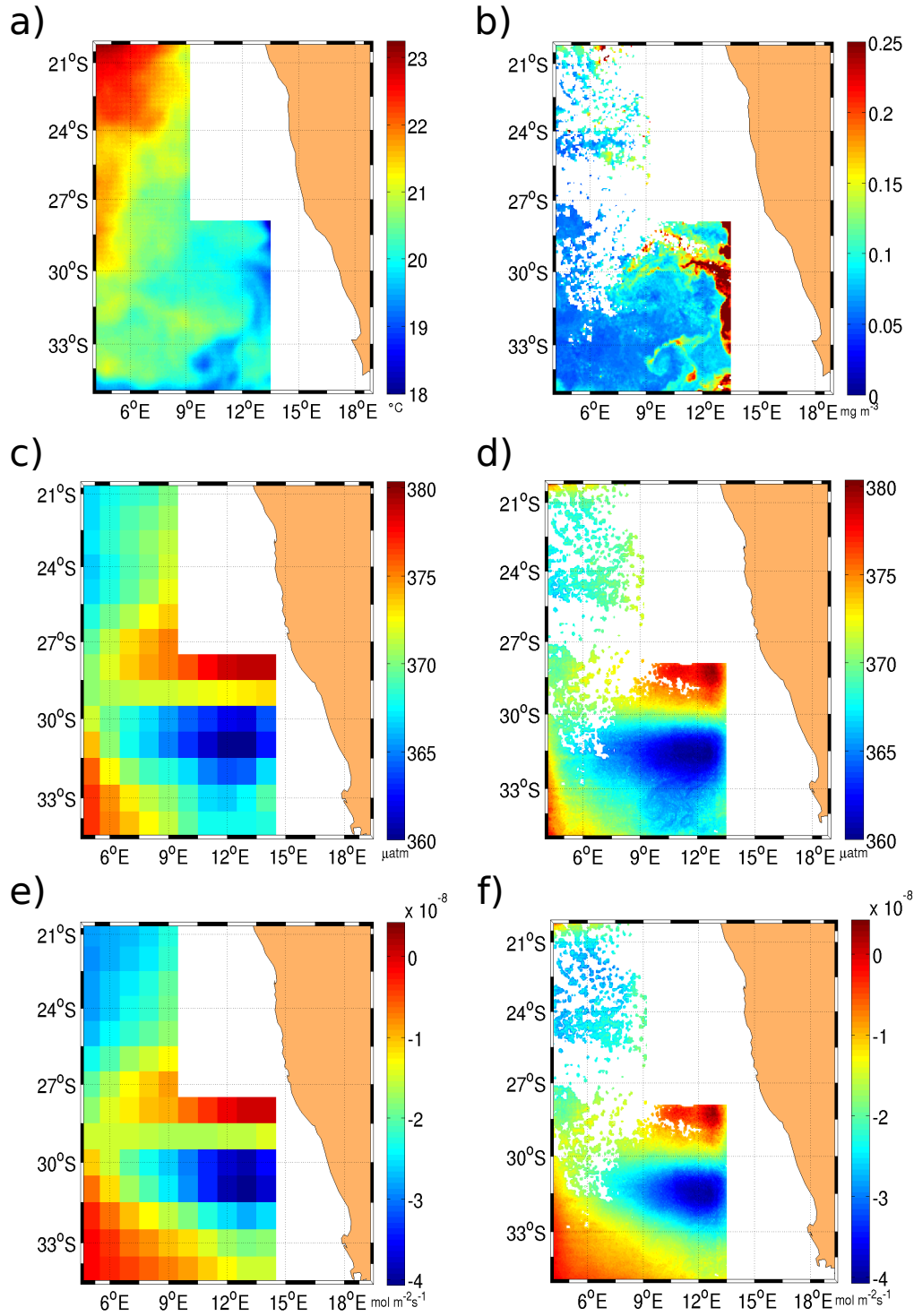
wards the atmosphere) in the region 25°-28°S and from 7°E eastward to the coast and is negative (into the ocean) south of 30°S and east of 6°E. Thus, we see that in the southern part offshore of the Benguela area there is a strong CO<sub>2</sub> sink and the northern part behaves as a weak CO<sub>2</sub> source.

What is new in the reconstructed pCO<sub>2</sub> is, for instance, that the cascade of information across the scales enhances gradients in the field of pCO<sub>2</sub>. It is striking that the high-resolution map provides the position of the North-South dipole "front" located at 30°S (i.e. -1.5 × 10<sup>-8</sup> isoline in green) which could not be inferred accurately from the low resolution map. The low resolution map would provide an estimate of the location of the "front" that is ~1.5° northern of the location inferred from the high-resolution map. Moreover one can see small structures in the pCO<sub>2</sub><sup>infer</sup> field between 33-35°S and 9-12°E in the pCO<sub>2</sub><sup>infer</sup> field (Fig. 5d). The small spatial scale variability is captured in the super-resolution pCO<sub>2</sub> field and not in pCO<sub>2</sub><sup>C<sub>track</sub></sup> as shown in the longitudinal profile of the images plotted in Fig. 5 at latitude 33.5°S (see Fig. 6). The same high spatial variability given by the small scale structures of the SST and OC images can be appreciated in their corresponding longitudinal profiles displayed in the panel a) and b) of Fig. 6. It is worthy to note the change in the shape of the profiles between the pCO<sub>2</sub><sup>infer</sup> and pCO<sub>2</sub><sup>C<sub>track</sub></sup> and fluxes of CO<sub>2</sub> at large scale, from 5.5°E to 10.5°E, showing that the method not only introduces small scale features but also modifies the large scale spatial variability.

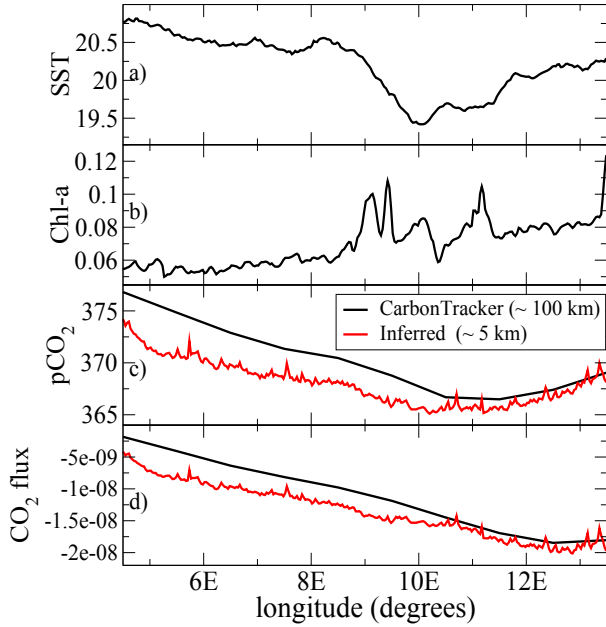
## 5.2 Evaluation of using different satellite products

Since the underlying aim of this work is to develop a methodology to infer super-resolution pCO<sub>2</sub> from space using remote observations, we perform a validation study of the different data used in the inferring computations. This provides us an evaluation of which satellite products are more suitable for our methodology and thus a gain in confidence in our method as well as a better understanding of its limitations. The evaluation analysis is addressed taking into account two main concerns: one related to the number of valid points yielded in the pCO<sub>2</sub><sup>infer</sup> field, and another with regard to the degradation of the information contained in the transition fronts. A valid point is a pixel where we have simultaneously Chl, SST and pCO<sub>2</sub> values from CarbonTracker, from which we can obtain a value of pCO<sub>2</sub><sup>infer</sup>, in other words without missing information. One example comparing the reconstructed pCO<sub>2</sub> field obtained from the above-mentioned product combinations is plotted in Fig. 7. The general pattern is quite similar in all of them with some differences in the details of the small scales and in the missing points due to cloudiness (white patches). This example clearly shows how different coverage of the pCO<sub>2</sub> can be in the field depending on the product combination.

Similar results are found when one compares the spatial distribution of the pCO<sub>2</sub><sup>infer</sup> values to the time averages over



**Fig. 5.** Maps of a) SST from OSTIA at 1/32° of spatial resolution, b) Chl at 1/32° of spatial resolution from GSM GLOBCOLOUR products, c) ocean pCO<sub>2</sub> from CarbonTracker at the spatial resolution of 1°, d) inferred pCO<sub>2</sub> at super-resolution (1/32°) derived from OSTIA SST and GLOBCOLOUR-GSM Chl-a shown in a) and b) respectively, e) Air-sea CO<sub>2</sub> flux as derived from CarbonTracker and f) Air-sea CO<sub>2</sub> flux computed from super-resolution pCO<sub>2</sub> shown in d) at 1/32°. All images correspond to March 22, 2006. White color corresponds to invalid pixels due to cloudiness and points inside of the CarbonTracker land mask



**Fig. 6.** Longitudinal profiles of a) SST from OSTIA products in units of °C, b) Chl from GLOBCOLOUR-GSM ocean in mg/m<sup>3</sup>, c) pCO<sub>2</sub><sup>Track</sup> (black line) and pCO<sub>2</sub><sup>Infer</sup> (red line) in μatm, and d) air-sea CO<sub>2</sub> fluxes from CarbonTracker (black line) and inferred air-sea CO<sub>2</sub> fluxes (red line) in mol C m<sup>-2</sup> s<sup>-1</sup>. All these longitudinal profiles correspond to the fixed latitude equal to 33.5°S of the plots shown in Fig. 5 for March 22, 2006.

785

790

2006 and 2008 for the three product combinations (Fig 8).

760 The same pattern with an area of higher pCO<sub>2</sub> between 24°S and 30°S and lower pCO<sub>2</sub> values outside this region is produced with the three combinations. The most noticeable differences are located in the most northern region and in the south-eastern region off Benguela. This can be quantified by

795

765

790

800

805

810

815

820

825

830

835

840

845

850

855

860

865

870

875

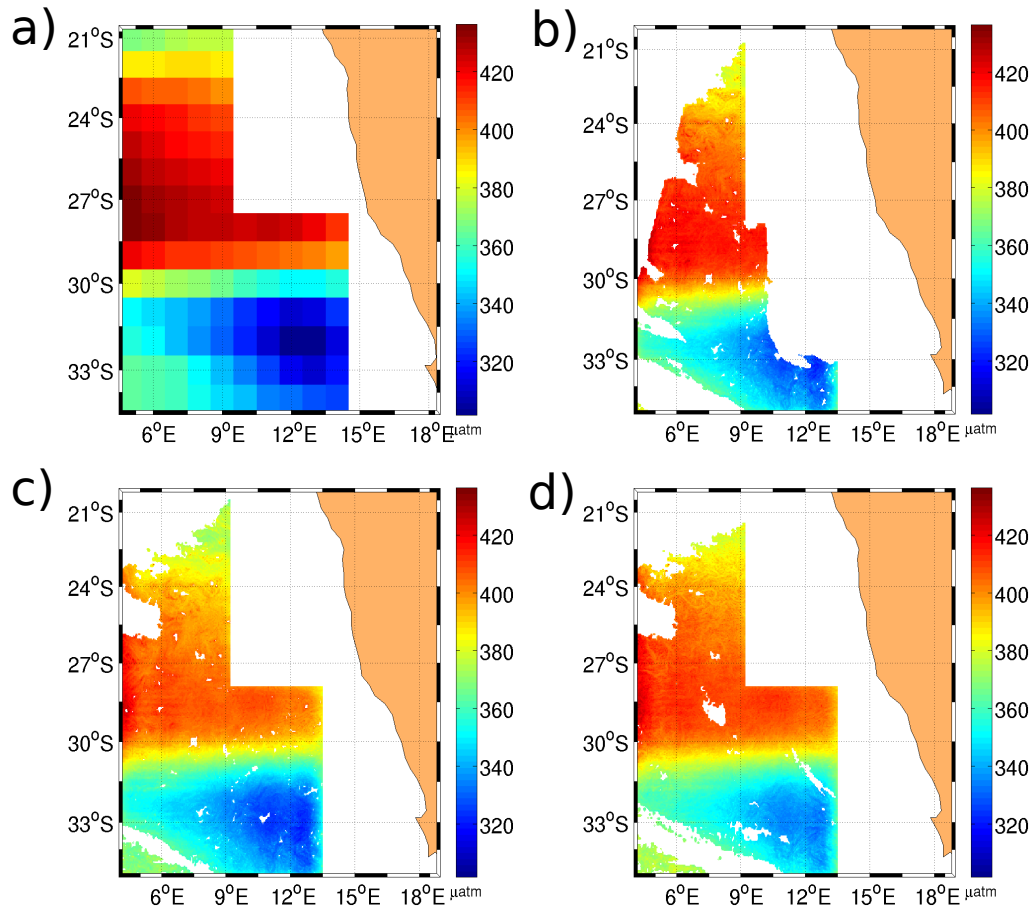
880

Valid Points in the inferred pCO <sub>2</sub> fields: 2006/2008	
No. total pixels domain	55711378
No. Points OSTIA-MERIS	9800776
No. Points OSTIA-GLOBCOLOUR(AVW)	26382072
No. Points OSTIA-GLOBCOLOUR(GSM)	27313043
No. Points MODIS-GLOBCOLOUR(GSM)	20397047
Proportion OSTIA-GSM/OSTIA-MERIS	2.78
Proportion OSTIA-GSM/MODIS-GSM	1.33
Proportion MODIS-GSM-/OSTIA-MERIS	1.08
<i>LP<sub>OM</sub></i>	82%
<i>LP<sub>OG</sub>(AVW)</i>	53%
<i>LP<sub>OG</sub>(GSM)</i>	51%
<i>LP<sub>MG</sub></i>	63%

**Table 3.** Number of valid points in the pCO<sub>2</sub> fields and their difference between the three combinations of MERIS or GLOBCOLOUR CHL with OSTIA or MODIS SST in the area of Benguela.

followed by the combination MODIS SST and GLOBCOLOUR Chl with  $N_{MG}=20397047$  points and finally with the OSTIA SST and MERIS Chl combination with  $N_{OM}=9800776$  points. Looking at the different proportions, we find that the number of valid points is 2.78 times larger when using the merged products OSTIA and GLOBCOLOUR-GSM than using OSTIA and MERIS, 1.33 times larger than using MODIS and GLOBCOLOUR-GSM and 1.08 times larger using OSTIA SST and GSM Chl-a than using MODIS SST and GSM Chl a. Further, if we know that the total number of pixels in the domain taking out the points of the CarbonTracker mask and for the two years is  $N_p=55711378$ , one can estimate the loss of valid points for each combination,  $LP_x$ .  $LP_x$  is computed by dividing the relative difference between the number of total available pixels in the domain  $N_p$  and the number of points in the inferred pCO<sub>2</sub> field obtained for each product combination,  $N_x$ , with respect to the total number of pixels  $N_p$ ,  $LP_x = \frac{N_p - N_x}{N_p} 100\%$ . Here the subscript  $x$  refers to the product combination (e.g.  $LP_x = LP_{OM}$ ,  $LP_{OG}$  and  $LP_{MG}$  for the loss of valid points with the OSTIA-MERIS, OSTIA-GLOBCOLOUR and MODIS-GLOBCOLOUR products combination, respectively). The loss of valid points due to cloudiness in the ocean colour and SST images is less severe for the OSTIA-GLOBCOLOUR combination with a loss of 51%, and is more affected by the cloudiness the OSTIA-MERIS combination with a loss of 82%.

Next we explore the quality of the information contained in the transition fronts, in particular, in the non-merged products such as MERIS OC and MODIS SST as compared to the merged products: GLOBCOLOUR OC and OSTIA SST. The PDFs of pCO<sub>2</sub> values from CarbonTracker and pCO<sub>2</sub><sup>Infer</sup> values for the three combinations of OC and SST products, i.e. MERIS-OSTIA, GLOBCOLOUR-OSTIA,



**Fig. 7.** a) Map of pCO<sub>2</sub> field at low resolution from CarbonTracker. Reconstructed pCO<sub>2</sub> field at super-resolution using: b) OSTIA SST and MERIS Chl-a, c) OSTIA SST and GSM-GLOBCOLOUR Chl-a and d) MODIS SST and GSM-GLOBCOLOUR Chl-a. All maps correspond to September 21 2006.

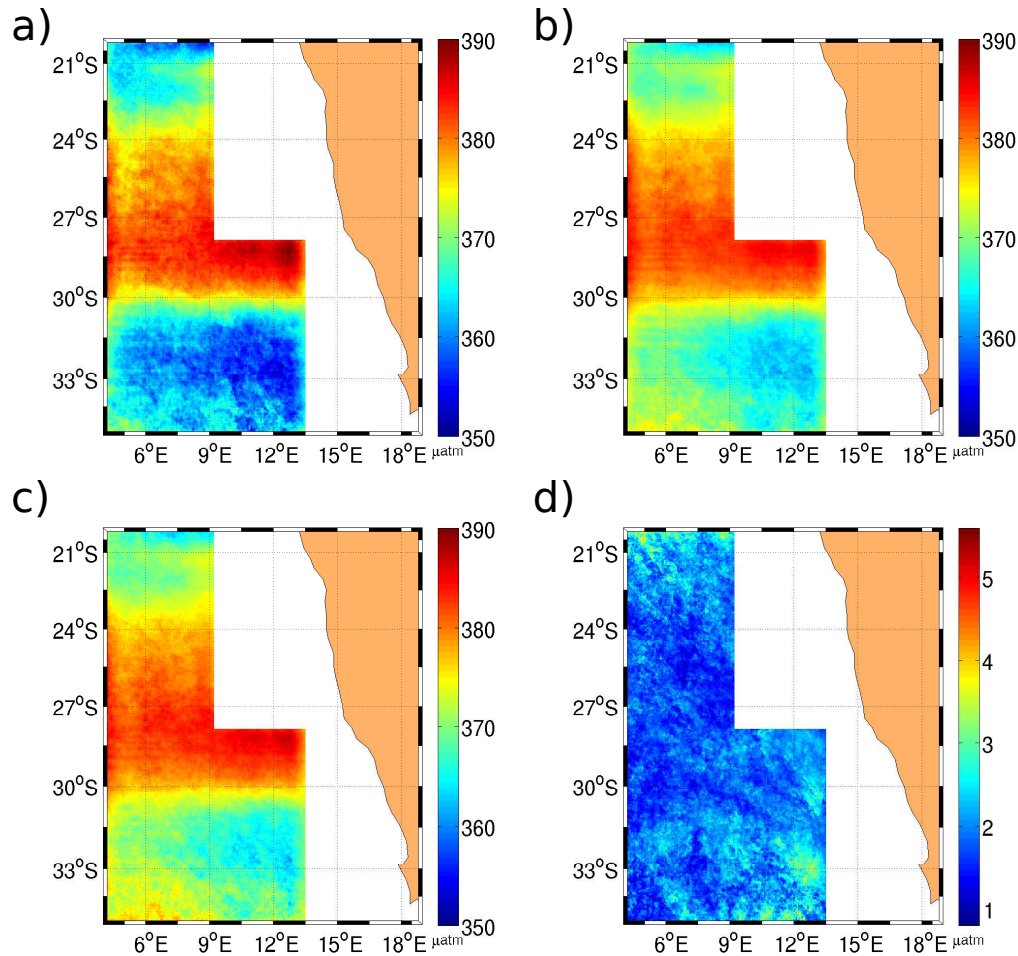
MODIS-GLOBCOLOUR (see Fig. 9) show that there is <sup>835</sup> a good correspondence of all pCO<sub>2</sub><sup>infer</sup> values with those from pCO<sub>2</sub><sup>CTrack</sup>. Indeed the histograms show also a better agreement between merged products and CarbonTracker: the peak of the PDF for pCO<sub>2</sub><sup>infer</sup> is closer to CarbonTracker peak in the case of OSTIA and GLOBCOLOUR than when using MERIS and MODIS products.

Furthermore, to examine the transition fronts for the different products we compute the singularity spectra for the three product combinations (see Figure 10). At low values of  $h$  (singularity exponent), related to the most singular manifolds, the shape of singularity spectrum for inferred data from merged products better matches a binomial <sup>845</sup> cascade, with an improved description of the dimension of the sharpest transition fronts. We know from the theory, that tracers advected by the flow in the turbulent regime, as

happens in the ocean, shows a multifractal behavior with a characteristic singularity spectrum  $D(h)$  similar, for some types of turbulence, to  $D(h)$  for the binomial multiplicative process.

### 5.3 Validation with in-situ measurements

Next, we perform a validation analysis of the results of our algorithm to infer pCO<sub>2</sub> at super-resolution with field observations of oceanic pCO<sub>2</sub>. We perform the validation using pCO<sub>2</sub> ocean data from in-situ measurements (pCO<sub>2</sub><sup>insitu</sup>) taken in the Benguela region (see Section 2.3). We decided to carry out directly the validation on pCO<sub>2</sub> rather than on the air-sea CO<sub>2</sub> flux since the field measurements do provide oceanic pCO<sub>2</sub> data.

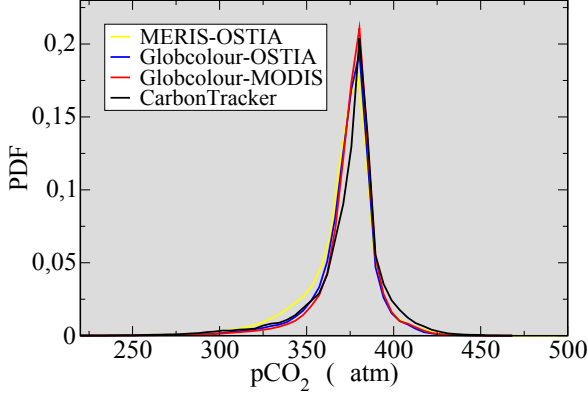


**Fig. 8.** Spatial distribution of the  $p\text{CO}_2^{\text{infer}}$  values to the time averages over both 2006 and 2008 years using: a) OSTIA SST and MERIS Chl-a, b) OSTIA SST and GSM-GLOBCOLOUR Chl-a and c) MODIS SST and GSM-GLOBCOLOUR Chl-a. d) Map with spatial distribution of the standard deviation for the  $p\text{CO}_2^{\text{infer}}$  among the different combination of the datasets.

850 An example of the qualitative comparison of values of  $p\text{CO}_2^{\text{Ctrack}}$ ,  $p\text{CO}_2^{\text{infer}}$  for all the product combinations and  $p\text{CO}_2^{\text{insitu}}$  at the intersections of the QUIMA cruise during July 4-7th, 2008, as a function of the longitudinal coordinate of the intersections, is shown in Figure 11. While there are visible differences between various  $p\text{CO}_2$  values, the values of  $p\text{CO}_2^{\text{infer}}$  approximate better  $p\text{CO}_2^{\text{insitu}}$  values than those 865 of  $p\text{CO}_2^{\text{Ctrack}}$ . The small scale patterns are well reproduced in the inferred  $p\text{CO}_2$  field. Values of  $p\text{CO}_2^{\text{infer}}$  exhibit gradients and small scale fluctuations, likely induced by the presence of fronts, which can be also detected on the profile of the in situ measurements of  $p\text{CO}_2$ . Most days  $p\text{CO}_2^{\text{infer}}$  and  $p\text{CO}_2^{\text{Ctrack}}$  values overestimate  $p\text{CO}_2^{\text{insitu}}$  values. On some days,  $p\text{CO}_2^{\text{infer}}$  values follow the same trend, with the same small scale fluctuations as  $p\text{CO}_2^{\text{insitu}}$ . 875 860

First, we analyze the number of valid intersections for each product combination. A valid intersection is a placement in space and time common to the inferred, CarbonTracker and in-situ  $p\text{CO}_2$ , without missing values. Among the 20 available cruises in the Benguela through 2005, 2006 and 2008 we find that the total number of in-situ measurements in the Benguela region under study is  $N_{\text{insitu}}=17355$  and within the CarbonTracker domain this number is reduced to  $N_{\text{Ctrack}}=8377$  measurements. To estimate the loss of valid intersections due to the land mask of of the CarbonTracker we compute the relative difference of the number of intersections between the cruise trajectories and the CarbonTracker domain with respect to the number of the in-situ measurements,  $L_{\text{Ctrack}} = \frac{N_{\text{insitu}} - N_{\text{Ctrack}}}{N_{\text{insitu}}} 100\% = 52\%$ , showing





**Fig. 9.** Comparison of the Probability Distribution Functions of CarbonTracker and inferred pCO<sub>2</sub> values over the Benguela area for the three different SST and OC product combinations: MERIS Chl and OSTIA SST, GLOBCOLOUR merged Chl and OSTIA SST, and GLOBCOLOUR merged Chl and MODIS SST

that half of the measurements fall within the coastal region of the Benguela (land masked by CarbonTracker).

880 The number of valid intersections is the largest with the OSTIA-GLOBCOLOUR combination (Table 4). To quantify the loss of valid intersections between the in-situ measurements and points in the  $pCO_2^{infer}$  field, likely due to cloudiness, we compute the relative difference between the number of measurements into the CarbonTracker domain and the valid points in the inferred pCO<sub>2</sub> field with respect to the number of intersections measurements of each cruise and the  $pCO_2^{ctrack}$  field,  $L_{infer} = \frac{N_{ctrack} - N_{infer}}{N_{ctrack}} 100\%$ . We repeat such a computation for the three product combinations. The percentage of losses of intersections in inferred field  $L_{infer}$  becomes twice as large than in the case of the OSTIA-SST and MERIS-Chl combination, and even higher than with the CarbonTracker domain mask.

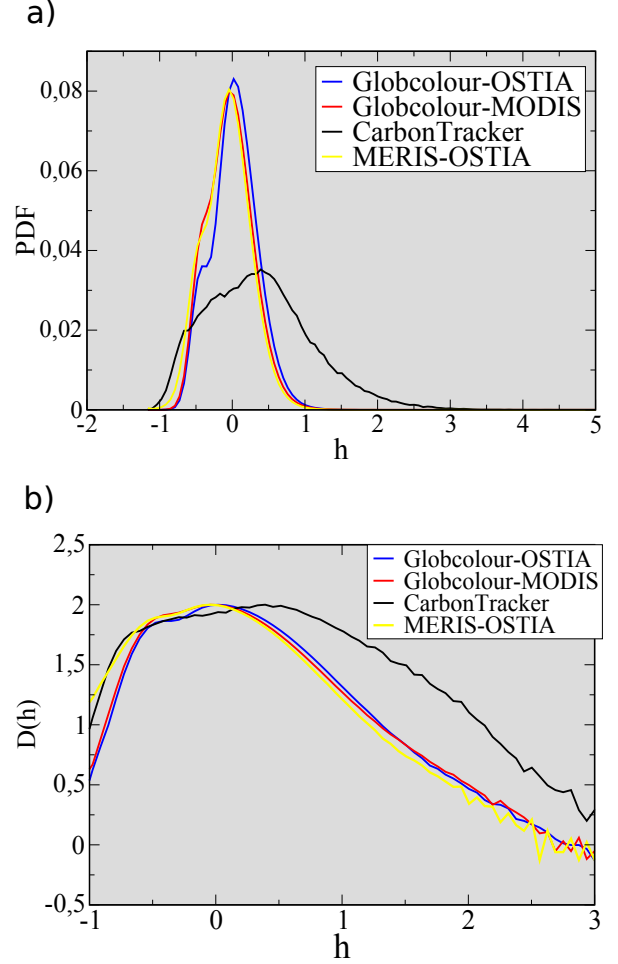
885 In order to quantitatively study the difference between values of  $pCO_2^{ctrack}$  and  $pCO_2^{infer}$  with respect to  $pCO_2^{insitu}$  measurements we compute the following statistical quantities: 905

- *Mean Difference (MD)*: average over all the intersections of the difference between  $pCO_2^{ctrack}$ ,  $pCO_2^{infer}$  and  $pCO_2^{insitu}$  at the same intersection,  $i$ ,

$$MD_{ctrack} = \frac{1}{N} \sum_{i=1}^N (pCO_2^{ctrack}(i) - pCO_2^{insitu}(i)) \quad (5)$$

$$MD_{infer} = \frac{1}{N} \sum_{i=1}^N (pCO_2^{infer}(i) - pCO_2^{insitu}(i)) \quad (6)$$

where N is the number of intersections.



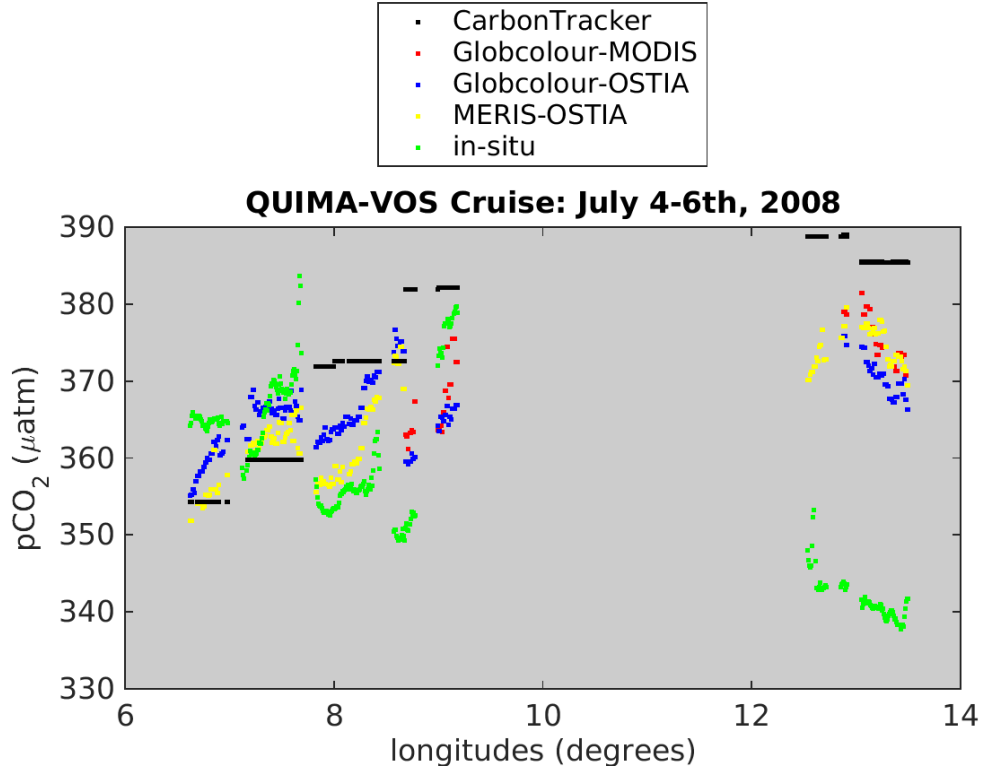
**Fig. 10.** a) Empirical PDFs for the singularity exponents of pCO<sub>2</sub> fields from CarbonTracker and from the cascade of the three product combinations. b) Associated singularity spectra. In these computations we use all the pCO<sub>2</sub> values obtained in 2006 and 2008.

- *Mean Absolute Error (AE)*: average over all the intersections of the absolute values of the difference between  $pCO_2^{ctrack}$  or  $pCO_2^{infer}$  and  $pCO_2^{insitu}$  at the same intersection,

$$AE_{ctrack} = \frac{1}{N} \sum_{i=1}^N |pCO_2^{ctrack}(i) - pCO_2^{insitu}(i)| \quad (7)$$

$$AE_{infer} = \frac{1}{N} \sum_{i=1}^N |pCO_2^{infer}(i) - pCO_2^{insitu}(i)| \quad (8)$$

- *Mean Relative Error (RE)*: average over all the intersections of the errors of the estimated values of pCO<sub>2</sub> (CarbonTracker or inferred) with respect to the refer-



**Fig. 11.** Values of  $pCO_2^{Ctrack}$  (black points),  $pCO_2^{infer}$  (MODIS-SST/GLOBCOLOUR-Chl) (red points),  $pCO_2^{infer}$  (OSTIA-SST/GLOBCOLOUR-Chl) (blue points)  $pCO_2^{infer}$  (OSTIA-SST/MERIS-Chl) (yellow points) and  $pCO_2^{insitu}$  (green points) in the intersections as a function of latitude corresponding to the valid intersections during the QUIMA cruise through July 4-6th, 2008

ence  $pCO_2$  values (in-situ) at the same intersection,

$$RE_{Ctrack} = \frac{1}{N} \sum_{i=1}^N \left| \frac{pCO_2^{Ctrack}(i) - pCO_2^{insitu}(i)}{pCO_2^{insitu}(i)} \right| \quad (9)$$

$$RE_{infer} = \frac{1}{N} \sum_{i=1}^N \left| \frac{pCO_2^{infer}(i) - pCO_2^{insitu}(i)}{pCO_2^{insitu}(i)} \right| \quad (10)$$

We started the statistical validation by analyzing each QUIMA cruise separately (not shown) and we found that in most of the cruises, the absolute error for inferred  $pCO_2$  is relatively small (less than 15  $\mu atm$ ) except on August 21, 2006 and May 17, 2008 with an error of 44  $\mu atm$  and 30  $\mu atm$ , respectively. Then we address the global validation using all available cruises during these years.

We summarize in Table 4 the results of the computations of the errors given by Eq. 7 to Eq.10 by making averages<sup>930</sup> over all valid intersections found during 2005, 2006 and 2008. The absolute error,  $AE$  is smaller in the three cases of  $pCO_2^{infer}$  (17.77, 16.47 and 16.62  $\mu atm$  for OSTIA-MERIS, OSTIA-GLOBCOLOUR and MODIS-GLOBCOLOUR combinations, respectively) than for  $pCO_2^{Ctrack}$  (21.34,<sup>935</sup>

	OST-MER	OST-GLOB	MOD-GLOB
No. valid intersections	747	1928	1460
$L_{infer}$ (%)	91	76	82
$MD_{Ctrack}$ ( $\mu atm$ )	2.97	8.83	14.93
$MD_{infer}$ ( $\mu atm$ )	0.15	3.42	8.42
$AE_{Ctrack}$ ( $\mu atm$ )	21.34	22.08	22.07
$AE_{infer}$ ( $\mu atm$ )	17.77	16.47	16.62
$RE_{Ctrack}$	0.059	0.060	0.061
$RE_{infer}$	0.048	0.045	0.046

**Table 4.** Mean error, absolute error and relative error of  $pCO_2$  values obtained from CarbonTracker and  $pCO_2$  values inferred at super-resolution with respect to values of  $pCO_2$  measurements during the QUIMA2005/QUIMA2006/QUIMA2008 cruises in the Benguela region.

22.08 and 22.07  $\mu atm$ , respectively), showing that the estimated  $pCO_2$  field at super-resolution using our algorithm is improving the  $pCO_2$  field obtained from CarbonTracker. The smallest  $AE$  is for the combination of SST and Chl provided by merged products. The values of  $pCO_2^{Ctrack}$  are, in average, larger than  $pCO_2^{insitu}$  ( $MD_{Ctrack} = 2.97, 8.83$

and 14.93  $\mu\text{atm}$ ) while the differences between  $\text{pCO}_2^{\text{infer}}$  and  $\text{pCO}_2^{\text{insitu}}$  values compensate each other ( $MD_{\text{infer}} = 0.15, 3.42$  and  $8.42 \mu\text{atm}$ ). In all cases the  $MD_{\text{Ctrack}}$  and  $MD_{\text{infer}}$  are positive, meaning that the  $\text{pCO}_2$  values are overestimated. Finally, comparing the relative error of  $\text{pCO}_2^{\text{Ctrack}}$  and  $\text{pCO}_2^{\text{infer}}$  with respect to  $\text{pCO}_2^{\text{insitu}}$ , we found that the relative error is low in all cases, being smaller for  $\text{pCO}_2^{\text{infer}}$  than for  $\text{pCO}_2^{\text{Ctrack}}$ .

Finally, if we only compare the statistical errors at the common valid intersections between the  $\text{pCO}_2^{\text{infer}}$  using the three product combinations with  $\text{pCO}_2^{\text{Ctrack}}$  and with the in-situ measurements (see Table 5), we obtain 458 mutual intersections. We obtain similar results when taking into account all the intersections. The absolute error is smaller in the case of  $\text{pCO}_2^{\text{infer}}$ , 17.65  $\mu\text{atm}$ , than with  $\text{pCO}_2^{\text{Ctrack}}$ , 20.24  $\mu\text{atm}$ , indicating that our algorithm is improving the estimation of ocean  $\text{pCO}_2$ . The smallest  $AE$  is again for the combination with merged products.  $MD$  is positive showing that the most of the time  $\text{pCO}_2^{\text{infer}}$  and  $\text{pCO}_2^{\text{Ctrack}}$  values are overestimated (It can be appreciated in Figure 11). Again the relative error is small, less than 0.06, for all the product combinations.

	OST-MER	OST-GLOB	MOD-GLOB
No. valid intersections	458	458	458
$MD_{\text{Ctrack}} (\mu\text{atm})$	8.01	8.01	8.01
$MD_{\text{infer}} (\mu\text{atm})$	4.37	1.62	3.32
$AE_{\text{Ctrack}} (\mu\text{atm})$	23.23	23.23	23.23
$AE_{\text{infer}} (\mu\text{atm})$	19.92	16.31	18.85
$RE_{\text{Ctrack}}$	0.065	0.065	0.065
$RE_{\text{infer}}$	0.055	0.045	0.051

**Table 5.** Mean error, absolute error and relative error of  $\text{pCO}_2$  values obtained from CarbonTracker and  $\text{pCO}_2$  values inferred at super-resolution with respect to values of  $\text{pCO}_2$  measurements during the QUIMA2005/QUIMA2006/QUIMA2008 cruises in the Benguela region at the same intersections.

## 6 Conclusions

In this work we have presented a method to infer high resolution CO<sub>2</sub> fluxes by propagating the small scale information given in satellite images across the scales of a multi-resolution analysis determined on the critical transitions given by singularity exponents. More specifically, we have reconstructed maps of CO<sub>2</sub> fluxes at high resolution (4 km) offshore of the Benguela region using SST and ocean colour data at this resolution, and CarbonTracker CO<sub>2</sub> flux data at low resolution (110 km). The inferred representation of ocean surface  $\text{pCO}_2$  improves the description provided by CarbonTracker, enhancing the small scale variability. Spatial fluctuations observed in latitudinal profiles of in-situ  $\text{pCO}_2$

have also been obtained in the inferred  $\text{pCO}_2$ , showing that the inferring algorithm is capturing the small scales features of the  $\text{pCO}_2$  field. The examination of different combinations of Ocean Colour and Sea Surface Temperature (SST) products reveals that using merged products, i.e. GLOB-COLOUR, the quality and the number of valid points in the  $\text{pCO}_2$  field are increased. We show that mean absolute errors of the inferred values of  $\text{pCO}_2$  with respect to in-situ measurements are smaller than for CarbonTracker. The statistical comparison of inferred and CarbonTracker  $\text{pCO}_2$  values with in-situ data shows the potential of our method as well as the shortcomings of using CarbonTracker data for the estimation of air-sea CO<sub>2</sub> fluxes. These results indicate that the outputs of our algorithm will be only as good as the inputs.

We are aware that further investigations can be performed in order to improve the algorithm. On one hand the multiple linear regression coefficients could be derived differentiating the seasons (i.e. coefficients would vary as a function of calendar month) considering the marked seasonal cycle in the Benguela upwelling system. Additionally, future work will be focused on the extension of the computations to larger areas in order to infer global high resolution CO<sub>2</sub> fluxes. This will allow more comprehensive and robust validation from more in-situ measurements.

*Acknowledgements.* This work is a contribution to ESA Support To Science Element Grant N<sup>o</sup> 400014715/11/I-NB OceanFlux-Upwelling Theme. The Surface Ocean CO<sub>2</sub> Atlas (SOCAT) is an international effort, supported by the International Ocean Carbon Coordination Project (IOCCP), the Surface Ocean Lower Atmosphere Study (SOLAS), and the Integrated Marine Biogeochemistry and Ecosystem Research program (IMBER), to deliver a uniformly quality-controlled surface ocean CO<sub>2</sub> database. The many researchers and funding agencies responsible for the collection of data and quality control are thanked for their contributions to SOCAT.

## References

- Abraham, E. and Bowen, M.: Chaotic stirring by a mesoscale surface-ocean flow, *Chaos*, 12, 373–381, 2002.
- Abraham, E., Law, C., Boyd, P., Lavender, S., Maldonado, M., and Bowie, A.: Importance of stirring in the development of an iron-fertilized phytoplankton bloom, *Nature*, 407, 727, 2000.
- Arneodo, A., Argoul, F., Bacry, E., Elezgaray, J., and J.F., M.: *Ondelettes, multifractales et turbulence*, Diderot Editeur, Paris, France, 1995.
- Bakker, D. C. E., Pfeil, B., Smith, K., Hankin, S., Olsen, A., Alin, S. R., Cosca, C., Harasawa, S., Kozyr, A., Nojiri, Y., O'Brien, K. M., Schuster, U., Telszewski, M., Tilbrook, B., Wada, C., Akl, J., Barbero, L., Bates, N. R., Boutin, J., Bozec, Y., Cai, W.-J., Castle, R. D., Chavez, F. P., Chen, L., Chierici, M., Currie, K., de Baar, H. J. W., Evans, W., Feely, R. A., Fransson, A., Gao, Z., Hales, B., Hardman-Mountford, N. J., Hoppema, M., Huang, W.-J., Hunt, C. W., Huss, B., Ichikawa, T., Johannessen, T., Jones, E. M., Jones, S. D., Jutterström, S.,

- Kitidis, V., Körtzinger, A., Landschützer, P., Lauvset, S. K.,<sup>1085</sup> Lefèvre, N., Manke, A. B., Mathis, J. T., Merlivat, L., Metzl, N., Murata, A., Newberger, T., Omar, A. M., Ono, T., Park, G.-H., Paterson, K., Pierrot, D., Ríos, A. F., Sabine, C. L., Saito, S.,  
1030 Salisbury, J., Sarma, V. V. S. S., Schlitzer, R., Sieger, R., Skjelvan, I., Steinhoff, T., Sullivan, K. F., Sun, H., Sutton, A. J.,<sup>1090</sup> Suzuki, T., Sweeney, C., Takahashi, T., Tjiputra, J., Tsurushima, N., van Heuven, S. M. A. C., Vandemark, D., Vlahos, P., Wallace, D. W. R., Wanninkhof, R., and Watson, A. J.: An update to the Surface Ocean CO<sub>2</sub> Atlas (SOCAT version 2), *Earth Syst. Sci. Data*, 6, 69–90, 2014.
- Berti, S. and Lapeyre, G.: Lagrangian reconstructions of temperature and velocity in a model of surface ocean turbulence, *Ocean Modelling*, 76, 59–71, 2014.
- 1040 Bouchet, F. and Venaille, A.: Statistical mechanics of two-dimensional and geophysical flows, *Physics Reports*, 515, 227–<sup>1000</sup>295, 2012.
- Delcroix, T., Alory, G., Cravatte, S., Corregge, T., and McPhaden, M.: A gridded sea surface salinity dataset for the tropical Pacific with sample applications (1950–2008), *Deep-Sea Research I*, 58(1), 38–48, 2011.
- 1045 Dickey, T.: Emerging ocean observations for interdisciplinary data assimilation systems, *J. Marine Syst.*, 40–41, 5–48, 2003.
- Dickson, A. G., Sabine, C. L. and Christian, J. R.: Guide to best practices for ocean CO<sub>2</sub> measurements, PICES Special Publication, 3, 191 pp, 2007.
- 1050 Donlon, C. J., Martin, M., Stark, J., Roberts-Jones, J., Fiedler, E., and Wimmer, W.: The Operational Sea Surface Temperature and Sea Ice Analysis (OSTIA) system, *Remote Sensing of Environment*, 116, 140–158, 2012.
- 1055 Franco, A. C., Hernández-Ayón, J. M., Beier, E., Garçon, V., Maske,<sup>1115</sup> H., Paulmier, A., Färber-Lorda, J., Castro, R., and Sosa-Ávalos, R.: Air-sea CO<sub>2</sub> fluxes above the stratified oxygen minimum zone in the coastal region off Mexico, *J. Geophys. Res. Oceans*, 119, 2014.
- 1060 Frisch, U.: *Turbulence: The Legacy of A.N. Kolgomorov*, Cambridge<sup>120</sup> University Press, 1995.
- Garbe, C. and Viharev, J.: Modeling of atmospheric transport of chemical species in the Polar regions, in: *IEEE International Geoscience and Remote Sensing Symposium*, IEEE, Munich, Germany, 6047–6050, 22–27 July, 2012.
- 1065 Garbe, C., Handler, R. A., and Jahne, B.: *Transport at the Air-Sea Interface – Measurements, Models and Parameterizations*, Springer-Verlag, Berlin, ISBN: 978-3-540-36904-2, 2007.
- 1070 Garbe, C., Rutgersson, A., Boutin, J., Delille, B., Fairall, C., Gruber, N., Hare, J., Ho, D., Johnson, M., de Leeuw, G., Nightingale, P., Pettersson, H., Piskozub, J., Sahlee, E., Tsai, W., Ward, B., Woolf, D., and Zappa, C.: Transfer across the air–sea interface, in: *Ocean–Atmosphere Interactions of Gases and Particles*, edited by: Liss, P. and Johnson, M., Springer-Verlag, Norwich, UK, 55–112, 2014.
- 1075 GLOBALVIEW: Cooperative Global Atmospheric Data Integration Project. 2013, updated annually. Multi-laboratory compilation of synchronized and gap-filled atmospheric carbon dioxide records for the period 1979–2012. Compiled by NOAA Global Monitoring Division: Boulder, Colorado, U.S.A. Data product accessed<sup>140</sup> at <http://dx.doi.org/10.3334/OBSPACK/1002>, 2013.
- González-Dávila, M., Santana-Casano, J., and Ucha, I.: Seasonal variability of  $fCO_2$  in the Angola-Benguela region, *Progress in Oceanography*, 83(1–4), 124–133, 2009.
- Gruber, N., Gloor, M., Fletcher, S., Doney, S., Dutkiewicz, S., and co authors: Oceanic sources, sinks and transport of atmospheric CO<sub>2</sub>, *Global Biogeochem. Cycles*, 23, GB1005, 2009.
- Gutknecht, E., Dadou, I., Vu, B. L., Cambon, G., Sudre, J., Garçon, V., Machu, E., Rixen, T., Kock, A., Flohr, A., Paulmier, A., and Lavik, G.: Coupled physical/biogeochemical modeling including O<sub>2</sub>-dependent processes in the Eastern Boundary Upwelling Systems: application in the Benguela, *Biogeosciences*, 10, 3559–3591, 2013.
- 1095 Hales, B., Takahashi, T., and Bandstra, L.: Atmospheric CO<sub>2</sub> uptake by a coastal upwelling system, *Global Biogeochem. Cycles*, 19, GB1009, 2005.
- IOCCP: Surface Ocean CO<sub>2</sub> Variability and Vulnerabilities Workshop, Rep. 7, U.N. Educ., Sci. and Cult. Organ., Paris, 5, 2007.
- Klein, P. and Lapeyre, G.: The oceanic Vertical Pump Induced by Mesoscale and Submesoscale Turbulence, *Annu. Rev. Mar. Sci.*, 1, 351–75, 2009.
- Landschützer, P., Gruber, N., Bakker, D., and Schuster, U.: Recent variability of the global ocean carbon sink, *Global Biogeochem. Cycles*, 28(9), 927–949, 2014.
- Mahadevan, A., Lévy, M., and Mémerly, L.: Mesoscale variability of sea surface  $pCO_2$ : What does it respond to?, *Global Biogeochemical Cycles*, 18, GB1017, 2004.
- Maji, S. K. and Yahia, H. M.: Edges, transitions and criticality, *Pattern Recognition*, 47, 2104–2115, 2014.
- Maritorena, S. and Siegel, D. A.: Consistent merging of satellite ocean color data sets using a bio-optical model, *Remote Sensing of Environment*, 94, 429–440, 2005.
- Monteiro, P.: Eastern boundary currents: The Benguela Current System, in: *Carbon and Nutrient Fluxes in Continental Margins: A Global Synthesis*, Chap. 2, edited by Liu, K., Atkinson, L., Quiñones, R., and Talaue-McManus, L., Springer, Berlin, 2010.
- Montes, I., Dewitte, B., Gutknecht, E., Paulmier, A., Dadou, I., Oschlies, A., and Garçon, V.: High-resolution modeling of the Eastern Tropical Pacific Oxygen Minimum Zone: Sensitivity to the tropical oceanic circulation, *Journal of Geophysical Research: Oceans*, p. accepted, 2014.
- Paulmier, A., Ruiz-Pino, D., and Garçon, V.: The Oxygen Minimum Zone (OMZ) off Chile as intense source of CO<sub>2</sub> and N<sub>2</sub>O, *Continental Shelf Research*, 28, 2746–2756, 2008.
- Paulmier, A., Ruiz-Pino, D., and Garçon, V.: CO<sub>2</sub> maximum in the Oxygen Minimum Zone (OMZ), *Biogeosciences*, 8, 1–14, 2011.
- Peters, W., Jacobson, A., C. Sweeney, A. A., Conway, T., Masarie, K., J.B. Miller, a. L. B., Petron, G., Hirsch, A., Worthy, D., van der Werf, G., Randerson, J., Wennberg, P., Krol, M., and Tans, P.: An atmospheric perspective on North American carbon dioxide exchange : CarbonTracker, *Proceedings of the National Academy of Sciences of the USA*, 104(48), 18 925–18 930, 2007.
- Pfeil, B., Olsen, A., Bakker, D. C. E., Hankin, S., Koyuk, H., Kozyr, A., Malczyk, J., Manke, A., Metzl, N., Sabine, C. L., Akl, J., Alin, S. R., Bates, N., Bellerby, R. G. J., Borges, A., Boutin, J., Brown, P. J., Cai, W.-J., Chavez, F. P., Chen, A., Cosca, C., Fassbender, A. J., Feely, R. A., González-Dávila, M., Goyet, C., Hales, B., Hardman-Mountford, N., Heinze, C., Hood, M., Hoppema, M., Hunt, C. W., Hydes, D., Ishii, M., Johannessen, T., Jones, S. D., Key, R. M., Körtzinger, A., Landschützer, P., Lauvset, S. K., Lefèvre, N., Lenton, A., Laurantou, A., Merlivat, L., Midorikawa, T., Mintrop, L., Miyazaki, C.,

- Murata, A., Nakadate, A., Nakano, Y., Nakaoka, S., Nojiri, Y., Omar, A. M., Padin, X. A., Park, G.-H., Paterson, K., Perez, F. F., Pierrot, D., Poisson, A., Ríos, A. F., Santana-Casiano, J. M., Salisbury, J., Sarma, V. V. S. S., Schlitzer, R., Schneider, B., Schuster, U., Sieger, R., Skjelvan, I., Steinhoff, T., Suzuki, T., Takahashi, T., Tedesco, K., Telszewski, M., Thomas, H., Tilbrook, B., Tjiputra, J., Vandemark, D., Veness, T., Wanninkhof, R., Watson, A. J., Weiss, R., Wong, C. S., and Yoshikawa-Inoue, H.: A uniform, quality controlled Surface Ocean CO<sub>2</sub> Atlas (SOCAT), *Earth Syst. Sci. Data*, 5, 125–143, 2013.
- Pont, O., Turiel, A., and J., P.-V. C.: On optimal wavelet bases for the realization of microcanonical cascade processes, *Int. J. Wavelets Multiresolut Inf. Process.*, 9(1), 35–61, 2011a.
- Pont, O., Turiel, A., and Yahia, H.: An optimized algorithm for the evaluation of local singularity exponents in digital signals., vol. LNCS 6636 of *14th International Workshop on Combinatorial Image Analysis (IWCIA 2011)*, Springer-Verlag, Madrid, 2011b.
- Pottier, C., Turiel, A., and Garçon, V.: Inferring missing data in satellite chlorophyll maps using turbulent cascading, *Remote Sensing of Environment*, 112, 4242–4260, 2008.
- Rind, D. *et al.*: Complexity and climate, *Science*, 284, 1999.
- Rödenbeck, C., Bakker, D. C. E., Metzl, N., Olsen, A., Sabine, C., Cassar, N., Reum, F., Keeling, R. F., and Heimann, M.: Interannual sea–air CO<sub>2</sub> flux variability from an observation-driven ocean mixed-layer scheme, *Biogeosciences*, 11, 4599–4613, 2014.
- Sabine, C. L., Hankin, S., Koyuk, H., Bakker, D. C. E., Pfeil, B., Olsen, A., Metzl, N., Kozyr, A., Fassbender, A., Manke, A., Malczyk, J., Akl, J., Alin, S. R., Bellerby, R. G. J., Borges, A., Boutin, J., Brown, P. J., Cai, W.-J., Chavez, F. P., Chen, A., Cosca, C., Feely, R. A., González-Dávila, M., Goyet, C., Hardman-Mountford, N., Heinze, C., Hoppema, M., Hunt, C. W., Hydes, D., Ishii, M., Johannessen, T., Key, R. M., Körtzinger, A., Landschützer, P., Lauvset, S. K., Lefèvre, N., Lenton, A., Lourantou, A., Merlivat, L., Midorikawa, T., Mintrop, L., Miyazaki, C., Murata, A., Nakadate, A., Nakano, Y., Nakaoka, S., Nojiri, Y., Omar, A. M., Padin, X. A., Park, G.-H., Paterson, K., Perez, F. F., Pierrot, D., Poisson, A., Ríos, A. F., Salisbury, J., Santana-Casiano, J. M., Sarma, V. V. S. S., Schlitzer, R., Schneider, B., Schuster, U., Sieger, R., Skjelvan, I., Steinhoff, T., Suzuki, T., Takahashi, T., Tedesco, K., Telszewski, M., Thomas, H., Tilbrook, B., Vandemark, D., Veness, T., Watson, A. J., Weiss, R., Wong, C. S., and Yoshikawa-Inoue, H.: Surface Ocean CO<sub>2</sub> Atlas (SOCAT) gridded data products, *Earth Syst. Sci. Data*, 5, 145–153, 2013.
- Santana-Casiano, J., González-Dávila, M., and Ucha, I.: Carbon dioxide fluxes in the Benguela upwelling system during winter and spring: A comparison between 2005 and 2006, *Deep Sea Research Part II*, 56(8–10), 533–541, 2009.
- Savtchenko, A., Ouzounov, D., Ahmad, S., Acker, J., Leptoukh, G., Koziana, J., and Nickless, D.: Terra and Aqua MODIS products available from NASA GES DAAC, *Advances in Space Research*, 34, 710–714, 2004.
- Sudre, J., Yahia, H., Pont, O., and Garçon, V.: Ocean turbulent dynamics at super resolution from optimal multiresolution analysis and multiplicative cascade, *IEEE TGRS*, in press, doi:10.1109/TGRS.2015.2436431, 2015.
- Sweeney, C., Gloor, E., Jacobson, A., Key, R., McKinley, G., Sarmiento, J., and Wanninkhof, R.: Constraining global air–sea gas exchange for CO<sub>2</sub> with recent bomb 14C measurements, *Global Biogeochemical Cycles*, 21, GB2015, 2007.
- Takahashi, T., Sutherland, S. C., Sweeney, C., Poisson, A., Metzl, N., Tilbrook, B., Bates, N., Wanninkhof, R., Feely, R., Sabine, C., Olafsson, J., and Nojiri, Y.: Global sea–air CO<sub>2</sub> flux based on climatological surface ocean pCO<sub>2</sub>, and seasonal biological and temperature effects, *Deep-Sea Research II*, 49, 1601–1622, 2002.
- Takahashi, T., Sutherland, S. C., Sweeney, C., Feely, R. A., Chipman, D. W., Hales, B., Friederich, G., Chavez, F., Sabine, C., Watson, A., Bakker, D. C. E., Schuster, U., Metzl, N., Yoshikawa-Inoue, H., Ishii, M., Midorikawa, T., Nojiri, Y., Kortzinger, A., Steinhoff, T., Hoppema, M., Olafsson, J., Anarson, T. S., Tilbrook, B., Johannessen, T., Olsen, A., Bellerby, R., Wong, C. S., Delille, B., Bates, N. R., and de Baar, H. J. W.: Climatological mean and decadal change in surface ocean pCO<sub>2</sub>, and net sea–air CO<sub>2</sub> flux over the global oceans, *Deep-Sea Research II*, 56, 554–577, 2009.
- Telszewski, M., Chazottes, A., Schuster, U., Watson, A. J., Moulin, C., Bakker, D., M. González-Dávila and, T. J., Körtzinger, A., Lüger, H., Olsen, A., Omar, A., Padin, X. A., Ríos, A., Steinhoff, T., Santana-Casiano, M., Wallace, D. W. R., and Wanninkhof, R.: Estimating the monthly pCO<sub>2</sub> distribution in the North Atlantic using a self-organizing neural network, *Biogeosciences Discuss.*, 6, 3373–3414, 2009.
- Turiel, A., Isern-Fontanet, J., García-Ladona, E., and Font, J.: Multifractal Method for the Instantaneous Evaluation of the Stream Function in Geophysical Flows, *Phys. Rev. Lett.*, 95, 104 502, 2005.
- Turiel, A., Yahia, H., and Pérez-Vicente, C.: Microcanonical multifractal formalism—a geometrical approach to multifractal systems: Part I. Singularity analysis., *J. Phys. A: Math. Theor.*, 41, 2008.
- Valsala, V. and Maksyutov, S.: Simulation and assimilation of global ocean pCO<sub>2</sub> and air–sea CO<sub>2</sub> fluxes using ship observations of surface ocean pCO<sub>2</sub> in a simplified biogeochemical offline model, *TellusB*, 62B, 821–840, 2010.
- Waldron, H. N., Monteiro, P. M. S., and Swart, N. C.: Carbon export and sequestration in the southern Benguela upwelling system: lower and upper estimates, *Ocean Sci.*, 5, 711–718, 2009.
- Weiss, R.: Carbon dioxide in water and seawater: the solubility of a non-ideal gas, *Marine Chemistry*, 2, 203–215, 1974.
- Yahia, H., Sudre, J., Pottier, C., and Garçon, V.: Motion analysis in oceanographic satellite images using multiscale methods and the energy cascade, *Pattern Recognition*, 43(10), 3591–3604, 2010.