



**HAL**  
open science

## Time domain simulation of a piano. Part 1 : model description.

Juliette Chabassier, Antoine Chaigne, Patrick Joly

### ► To cite this version:

Juliette Chabassier, Antoine Chaigne, Patrick Joly. Time domain simulation of a piano. Part 1 : model description.. ESAIM: Mathematical Modelling and Numerical Analysis, 2013, 48 (05), pp.1241-1278. 10.1051/m2an/2013136 . hal-00913775v2

**HAL Id: hal-00913775**

**<https://inria.hal.science/hal-00913775v2>**

Submitted on 17 Dec 2013

**HAL** is a multi-disciplinary open access archive for the deposit and dissemination of scientific research documents, whether they are published or not. The documents may come from teaching and research institutions in France or abroad, or from public or private research centers.

L'archive ouverte pluridisciplinaire **HAL**, est destinée au dépôt et à la diffusion de documents scientifiques de niveau recherche, publiés ou non, émanant des établissements d'enseignement et de recherche français ou étrangers, des laboratoires publics ou privés.

## TIME DOMAIN SIMULATION OF A PIANO. PART 1 : MODEL DESCRIPTION.

J. CHABASSIER<sup>1</sup>, A. CHAIGNE<sup>2</sup> AND P. JOLY<sup>3</sup>

**Abstract.** The purpose of this study is the time domain modeling of a piano. We aim at explaining the vibratory and acoustical behavior of the piano, by taking into account the main elements that contribute to sound production. The soundboard is modeled as a bidimensional thick, orthotropic, heterogeneous, frequency dependent damped plate, using Reissner Mindlin equations. The vibroacoustics equations allow the soundboard to radiate into the surrounding air, in which we wish to compute the complete acoustical field around the perfectly rigid rim. The soundboard is also coupled to the strings at the bridge, where they form a slight angle from the horizontal plane. Each string is modeled by a one dimensional damped system of equations, taking into account not only the transversal waves excited by the hammer, but also the stiffness thanks to shear waves, as well as the longitudinal waves arising from geometric nonlinearities. The hammer is given an initial velocity that projects it towards a choir of strings, before being repelled. The interacting force is a nonlinear function of the hammer compression. The final piano model is a coupled system of partial differential equations, each of them exhibiting specific difficulties (nonlinear nature of the string system of equations, frequency dependent damping of the soundboard, great number of unknowns required for the acoustic propagation), in addition to couplings' inherent difficulties.

**1991 Mathematics Subject Classification.** 00A71, 00A65, 65P05, 65N25, 35Q72, 35L05.

December 17, 2013.

## INTRODUCTION

This work is the continuation of a long term collaboration between the Unité de Mécanique, ENSTA Paris-Tech, specialized in musical acoustics and the project team POems (CNRS / ENSTA / INRIA) specialized in the development of numerical methods for wave equations. This collaboration, whose aim is to design physical models and perform time domain simulations of musical instruments, already gave birth in the past to modeling tools for musical instruments, the timpani [RCJ99] and the guitar [DCJB03]. By considering today the piano, we attack a new challenge that represents a gap compared to the two above mentioned works as well as for the complexity of the physics and the underlying models as for the size of the problem.

This work is of course related to the problem of sound synthesis, whose one aim is to generate realistic sounds of given instruments (here, the piano). Many methods reach this goal successfully. A number of them operate in real-time, based on various strategies (pre-recording of some selected representative sounds ; frequency,

---

*Keywords and phrases:* piano, modeling, energy, precursor and phantom partials, damping mechanisms.

<sup>1</sup> Magique 3D team, Inria Sud Ouest, 200 avenue de la vieille tour, 33 405 Talence cedex, France

<sup>2</sup> UME ENSTA, chemin de la hunière, 91761 Palaiseau, France

<sup>3</sup> POems team, Inria Rocquencourt, domaine de Voluceau, BP 105, 78153 Le Chesnay, France

amplitude or phase modulation ; additive or subtractive synthesis ; parametric models...), see [Gui]. However, most of them have only little connections with the physics of the instrument.

Our wish is not only to reproduce the sound generated by a physical object (the piano) convincingly, but rather to understand how this specific object can generate such a particular sound, by modeling the complete instrument, based on the equations of the physics and using geometric and material related coefficients. Such an approach can be referred to as « physics based sound synthesis ».

The first works in this direction rely on very simplified or reduced models. With regard to the specific case of the piano, one can mention, for example, the very popular method of digital waveguides, through which a piano model was proposed by [NI86] and reviewed by [BAB<sup>+</sup>03]. This method is particularly effective and efficient and can be coupled with more traditional methods (as for instance finite differences in [BBKM03]). An alternative approach, based on the so-called modal method, has been chosen for instance at IRCAM for the software *Modalys* [107].

Another approach is to use the standard tools of numerical analysis for PDEs (finite element, finite differences) to solve the system of equations numerically. The advantage of such an approach is to keep a strong connection to the physical reality, and to make very few a priori assumptions on the behavior of the solution. The intention is to reproduce the attack transients and the extinction of the tones faithfully, thus offering a better understanding of the complex mechanisms that take place in the vibrating structure. This approach was adopted in the past to study separate parts of the piano: [Bou88] and [CA94] investigated the interaction between the hammer and the strings. [Bil05] was interested in modeling the nonlinear behavior of the strings. [Cue06] proposed a model to explain the coupling between the strings and the soundboard at the bridges. [VBM09] and [IMB08] studied the vibration the hammer shank. To our knowledge, there is only one published work [GJ04] which focuses on both the modeling a full piano and its numerical formulation. This model makes use of partial differential equations, and accounts for the main involved phenomena : from the initial blow of the hammer to the propagation of sound, including the linear vibration of strings and soundboard. For the discrete formulation of the problem, classical numerical analysis tools are used, namely finite differences in space and time.

Our work aims at continuing this effort by providing a complete piano model (to our knowledge, it is the most accurate model available today), and a reliable, innovative and accurate numerical method to solve it. These two steps were naturally the two main parts of the work that has given rise to this series of two articles, the first of which is devoted to the construction of the mathematical model. The second part will be concerned by the discretization of this model and the validation of physical hypotheses through numerical simulations. Although this first article is supposed to be readable independently, its interest will appear more clearly when reading the second article. The goal of the present article is threefold:

- (i) Explain the historical construction of our piano model, pointing out the links with the physics and the limitations of this model,
- (ii) Describe some fundamental mathematical properties of this model (in particular energy identities) that provide a real confidence for its soundness from a theoretical point of view,
- (iii) Propose a general and abstract framework and formulation for this model, which we find useful for at least two reasons
  - besides the fact that it permits some conciseness in the presentation, this prepares the second part on the discretization of the model, which will rely in an essential way on this formulation,
  - we believe that future enrichments of our model will fit this general framework, which should limit the amount of work for the improvement of our computational code.

Before giving the outline of this paper, it is first useful to describe in some detail the structure of a piano, introducing the main elements that we shall systematically refer to, as well as the main physical mechanisms involved in the sound production. These are illustrated by figures 1(a) and 1(b).

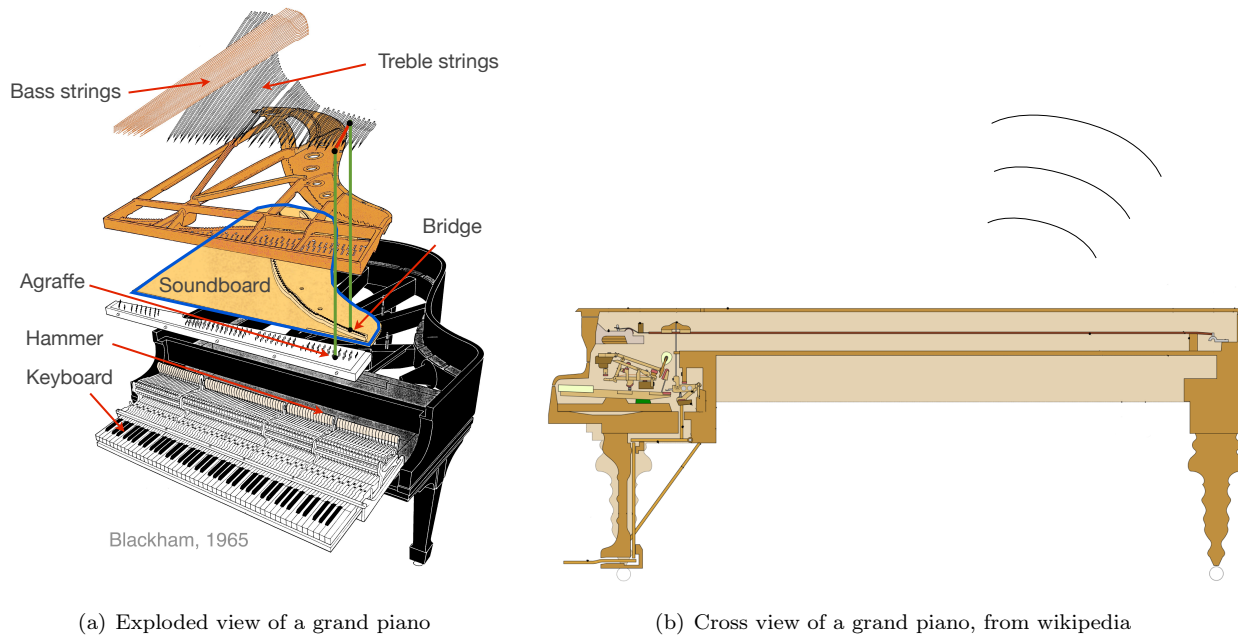


FIGURE 1. Schematic view of a grand piano's mechanism.

The keyboard of most pianos has 88 black and white keys, corresponding to the notes of the tempered scale. The action of one key (see figure 1(a)) throws one hammer toward one or several strings, depending on the selected note. The strings are made of steel, but the bass strings are wrapped with copper. Each string is attached to a wooden beam, the bridge, which transmits its vibrations to the soundboard, a thin (less than 1 cm) wooden plate which radiates in the surrounding air inducing our perception of a sound. A cast iron frame is placed above the soundboard in order to support the strings' tension, and the complete system is integrated in a thick structure with the keyboard in front. Most of the time, three pedals are at the pianist's feet's disposal, allowing to act on the dampers or the hammers' mechanism. This principle is identical for grand and upright pianos, even though the practical implementation is different in each case. In the following, we adopt the Anglo-Saxon notation (from A to G) to name the different notes of the piano, starting from octave 0. The first key is therefore A0, corresponding to a fundamental frequency of 27.5 Hz, while the last one is C8, with fundamental frequency of 4186 Hz.

In the following of this paper, in section 1, we present various experimental results that will serve for assigning some objectives to our model. We especially describe some features that seem to be (at least all together) specific of a piano sound such as the sound precursor, the inharmonicity, and the phantom partials. In the long section 2, we present the model we have designed for the piano strings (a visco-elastic nonlinear stiff string model), for which a special effort has been given. We explain in particular why the simple linear model that we used for guitar strings in [DCJB03] could not be satisfactory. Section 3 is concerned with the model we have chosen for the hammers and their interaction with the strings. Section 4 is devoted to the mathematical model for the soundboard (subsection 4.1) and more importantly for its coupling with the strings at the bridge (subsection 4.2). Finally, in section 5, we construct our full piano model by putting together the models on the



previous sections and coupling them to the model for sound radiation described in section 5.1. Let us notice that a particular attention has been given to accounting for various damping mechanisms, which appear to be essential in sound perception.

Nowadays, the piano is certainly the most widely played instrument, and its advanced manufacture keeps up with its popularity. Beyond the aspects that concern fundamental research, which we have already emphasized, we hope that this work could also be of some interest for piano makers. The challenges they face today include the seek for volume and homogeneity from bass to treble, and even more : the seek for a specific timbre (or tone color), long sustain, and for an appropriate distribution of sound in space. In order to reduce the proportion of empiricism, and anticipate the impact of possible changes in the vibrational and acoustical behavior of the instrument, many piano makers have their own research laboratory, oriented towards experimentation but also towards numerical simulation, as for instance the case of house Schimmel. Numerical methods are now part of the improvement and testing process of various parts of the piano (soundboard modal analysis, spectral analysis of the strings, shape optimization of the cast iron frame...). Some piano makers collaborate with universities or research laboratories, in order to answer specific questions about the instrument (radiation efficiency, characteristic damping time, or boundary conditions at the bridge as, for example, in the collaboration between the pianos Stuart & Sons and the Australian research centre CSIRO). The approach used by piano makers, however, suffers from one major limitation : although they are able to study in detail the behavior of each part of the instrument, they generally do not consider the coupling between its main elements, which in fact may significantly influence this behavior. On the contrary, a comprehensive modeling tool, as we intend to design in this paper, accounting for all the couplings between the main parts of the instrument, yields a better understanding of the influence of some particular settings on the whole behavior of the piano. It becomes then possible to conduct « virtual experiments », by systematically changing materials, geometries, or some other design parameters, and observe the effect of these changes on the entire vibro-acoustic behavior of the instrument, and ultimately, on the resulting sound.

In this type of modeling work of complex nature, the question of the relevance of a new model and its superiority with respect to existing models is naturally posed. The answer is not easy and will not be completely given in this paper : a complete answer will be provided in the second article with numerical results. We believe that, by construction and because of the variety and intrinsic complexity of the phenomena it pretends to handle, our model is much more complete than previous ones. Assessing the quality of this model is also a delicate question. One of the criteria that we have chosen is that this model should be able to reproduce experimental facts observed previously in the literature or in our own experiments, as already mentioned. In this perspective, we have fixed five clear objectives to our model, they will be explicitly stated in section 1, and give, along the paper, various evidences that our model reaches these objectives. A second aspect of the question, when a model is intended to be used for numerical computation, is that it should be adapted to a reliable, accurate and efficient numerical discretization method. Again a proof of that will be brought in our second paper. The next point is that the numerical results provided by the discretized model should also suffer the comparison, at least qualitatively, with experimental results : again, the evidence of this will be given in the second paper. Finally, from a more acoustical or musical point of view, a good model should provide synthetic sounds that really look like piano sounds, allow to play synthetic musical pieces, etc ... It is difficult, if not impossible, to demonstrate this in a research paper but we encourage the reader to look at the website [modelisation.piano.free.fr](http://modelisation.piano.free.fr) in order to make its own judgment about our relative success in this direction.

# 1. EXPERIMENTAL OBSERVATIONS : SOUND PRECURSORS, INHARMONICITY AND PHANTOM PARTIALS

## 1.1. Experimental results and objectives for our model

We begin by a presentation of some experimental facts that are taken from the literature or are the results of measurements performed by two of the authors (J. Chabassier and A. Chaigne). These observations have served to define some objectives for the construction of our model.

We begin by analyzing a real piano sound which is nothing but a pressure signal  $p(t)$  as a function of time as illustrated in figure 2(a). It is typically a highly oscillating function whose amplitude slowly decays in time. Acousticians usually perform a time frequency analysis by computing seismograms that result from windowed

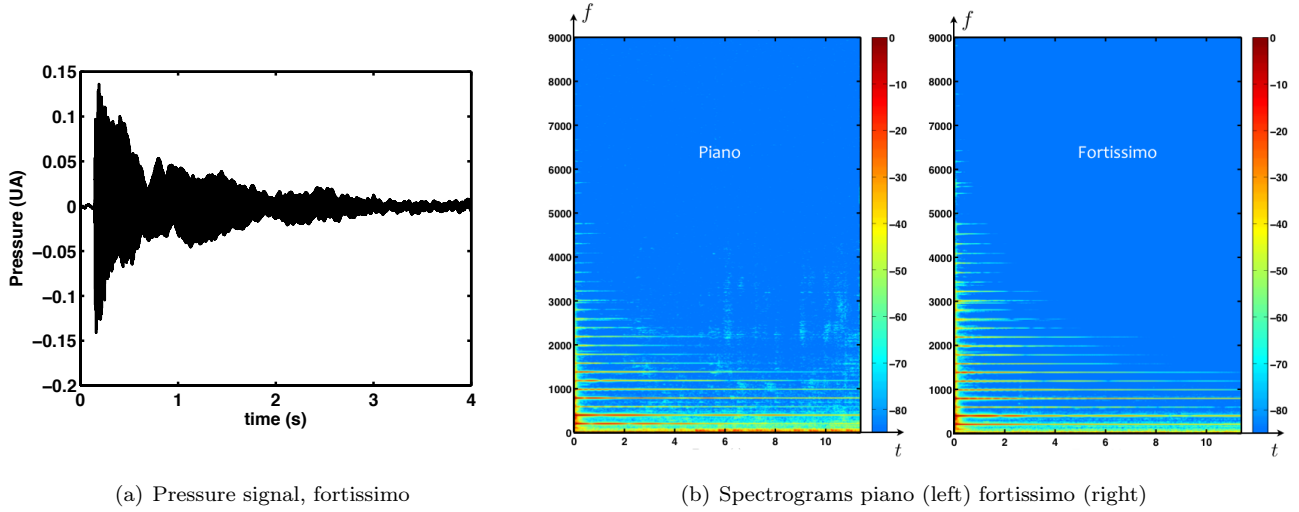


FIGURE 2. Experimental highlight of frequency dependent damping and presence of nonlinear phenomena in the piano. Note G3.

Fourier transforms of  $p(t)$

$$\widehat{p}(t, f) = \int_0^{+\infty} p(\tau) \theta\left(\frac{\tau - t}{T}\right) e^{-2i\pi f t} d\tau \quad (1.1)$$

where  $\theta(\sigma)$  is a normalized, smooth enough, window function satisfying

$$\begin{cases} \theta \geq 0, & \text{supp } \theta = [0, 1], & \theta > 0 \text{ in } ]0, 1[ \\ \theta \text{ is increasing on } [0, 1/2], & \theta(1 - \sigma) = \theta(\sigma), & \theta(1/2) = 1 \end{cases} \quad (1.2)$$

and  $T$  denotes the size of the window. We choose the Hanning window :

$$\theta(t) = \frac{1}{2} + \frac{1}{2} \cos 2\pi \frac{t}{T} \text{ for } t \in [0, T].$$

The spectrogram is then defined as

$$S\widehat{p}(t, f) = 20 \left| \ln \left( \frac{|\widehat{p}(t, f)|}{\|\widehat{p}\|_{\infty}} \right) \right|, \quad \|\widehat{p}\|_{\infty} = \sup_{t, f} |\widehat{p}(t, f)| \quad (1.3)$$

In principle,  $T$  is chosen sufficiently large with respect to the periods of the oscillations of the signal and sufficiently small with respect to its duration. The spectrograms that we present in level lines in the  $(t, f)$  plane (see figure 2(b)) have been computed with  $T = 200$  ms. Roughly speaking, in each spectrogram :

- the curves  $f \rightarrow S\widehat{p}(t, f)$  show the frequency content of the signal in  $[t, t + T]$ ,
- the curves  $t \rightarrow S\widehat{p}(t, f)$  show the time evolution of the component of the signal with frequency  $f$ .

The two spectrograms of figure 2(b) correspond to the same note G3. The left one corresponds to a piano dynamic level play, the right one to a fortissimo dynamic level play. On each spectrogram, the presence of horizontal rays illustrates the existence of predominant frequencies and the variable decay of these rays illustrates that the attenuation of the signal is greater for high frequencies than for smaller ones.

**Objective 1.** Represent attenuation phenomena which are selective in frequency.

If the two pressure signals were proportional, the two spectrograms would be identical, which is not the case. This indicates that some nonlinear phenomena have been involved in the physical mechanisms.

**Objective 2.** Integrate non linearities in order to discriminate piano and fortissimo sounds.

The next results that we wish to point out are extracted from the article [PL88] in JASA. The authors performed some experiments related to the note A0 (the first A of the keyboard) of a grand piano. They were interested in

- the transverse displacement (more precisely the “vertical” transverse displacement, parallel to the hammer striking direction) of a point of the string located 10 cm from the bridge,
- the sound pressure signal at a point corresponding to a microphone placed about 10 cm above the piano.

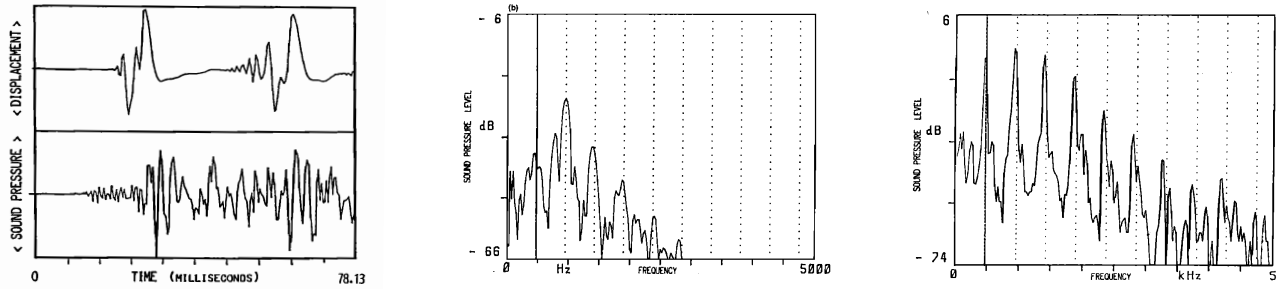
From a naive reasoning, the pressure signal is expected to begin after the string vibration. However, this is exactly the contrary that the authors observed as illustrated on figure 3(a), which concerns the first 80 ms of their experiment. The pressure signal begins with a “high frequency” (compared to what is observed on the transverse displacement) signal that clearly contributes to the sound : they called it the sound precursor.

They analyzed the frequency content of this part of the signal through its spectrum (in short, the modulus of the Fourier transform of the signal adequately truncated in time, represented in logarithmic scale) : this gives a curve with respect to the frequency  $f$ , where  $2\pi f$  is the dual variable for the time, see figure 3(b) for the range of frequencies  $[0, 5000]$  Hz. One clearly sees regularly spaced peaks, enhanced by the presence of the dotted vertical lines, set to integer multiples of 475.0 Hz. These peaks coincide with those observed on the pressure signal when the string is excited only in its longitudinal direction, as illustrated in figure 3(c). This direction is orthogonal to the usual transverse solicitation due to the hammer, which explains why such peaks cannot be observed on the spectrum of the transverse displacement.

This was in some sense a “demonstration” that the longitudinal displacement has a role to play in the generation of a piano sound.

**Objective 3.** Account for some mechanism of transmission of the longitudinal string’s displacements to the soundboard.

Next, we present some results of experiments that we did on a Steinway grand piano (D model) that was put



(a) Time-domain plots of the initial string displacement (upper frame) and sound pressure (lower frame) after striking the  $A_0$  (27.5 Hz) key on the piano. The time scale in the upper and lower frames are synchronized, and the vertical scale units are arbitrary. From [PL88].

(b) The spectrum of the precursive sound-pressure signal in 3(a). From [PL88].

(c) The spectrum of the sound-pressure signal obtained by excitation of the longitudinal modes in the  $A_0$  (27.5 Hz) string. From [PL88].

FIGURE 3. Experimental highlight of the longitudinal vibrations of the string's contribution to the sound pressure. From [PL88].

at our disposal for some period at IRCAM<sup>1</sup>. These experiments concern the note D $\sharp$ 1, with a fundamental frequency of 38.89 Hz. In figure 4(a), we observe, in the range of frequencies [1 2] kHz, the spectrum of the transverse displacement of the string at a point located at 1.8 cm from the agraffe. Again we observe sharp peaks, indicated by the red circles, that correspond to an increasing sequence  $f_n$  of frequencies. At first glance, these peaks seem to be equally spaced but a closer analysis indicates that the spacing between two consecutive peaks,  $f_{n+1} - f_n$ , slightly increases with  $n$ . More precisely, these peaks seem to follow (at least in the range of audible frequencies [0, 20] kHz) a law of the form:

$$f_n = n f_0 (1 + B n^2). \quad (1.4)$$

This is called the inharmonicity of a piano sound (as opposed to the case where peak frequencies would be all proportional to a fundamental frequency  $f_n = n f_0$ ). The dimensionless parameter  $B$ , which is small with respect to 1, is called the inharmonicity factor.

**Objective 4.** Reproduce the inharmonicity effects.

Finally, we observe on figure 4(b), the spectrum of the vertical<sup>2</sup> acceleration of the bridge at the attached point of the string. We see, in addition to the peaks observed on figure 4(a), some new peak frequencies indicated by the magenta diamonds. These frequencies also appear on the spectrum of the vertical acceleration of any other point of the soundboard, as illustrated by figure 4(c), as well as in the spectrum of the recorded sound pressure signal, see figure 4(d). These partials were named “phantom partials” by Conklin in [Con97] when he first observed them experimentally, since there was no explanation of their existence from existing models.

**Objective 5.** Account for the phantom partials.

<sup>1</sup>[www.ircam.fr/?&L=1](http://www.ircam.fr/?&L=1)

<sup>2</sup>In the sequel, we will refer to the geometrical configuration of a grand piano, in which the soundboard is horizontal.

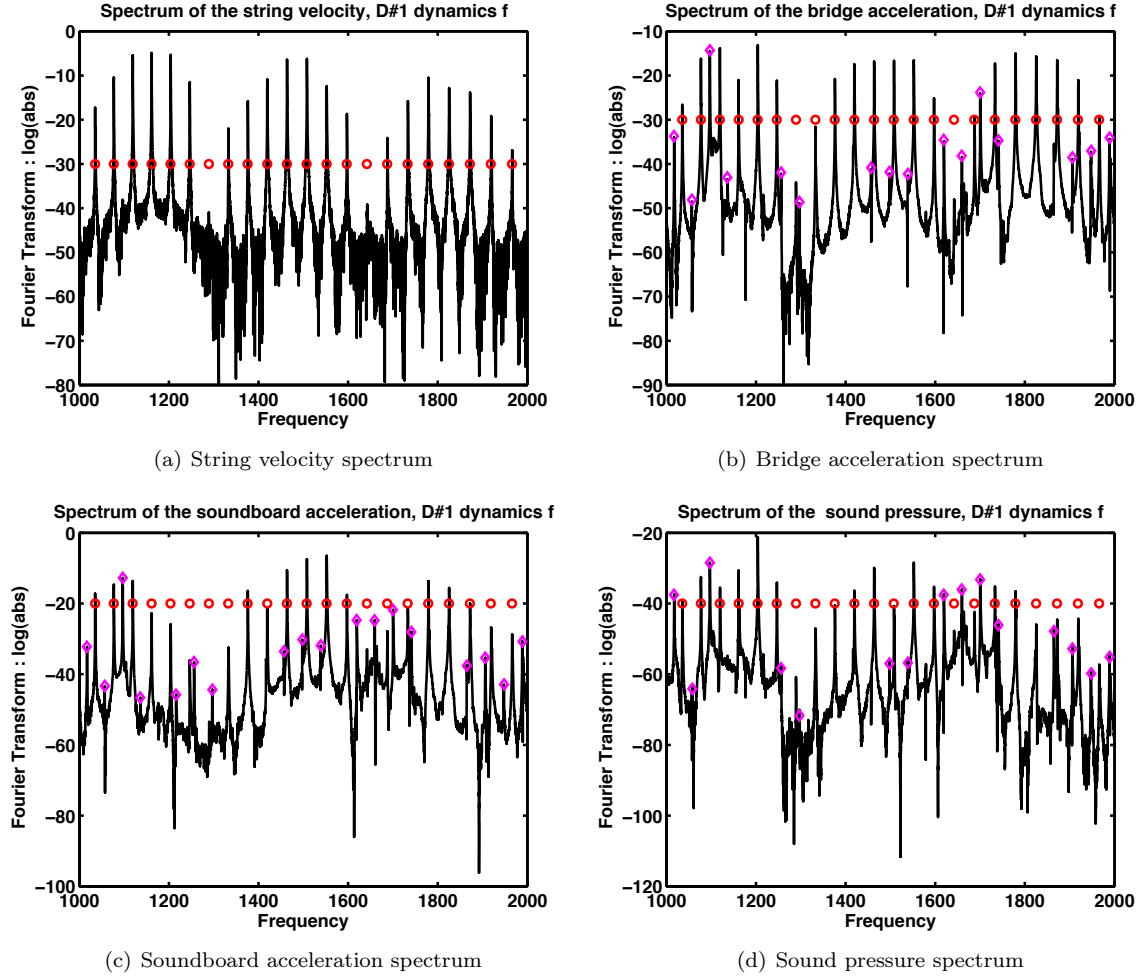


FIGURE 4. Spectra of different measured signals when striking the D#1 key, in the range [1 2] kHz.

## 2. A MATHEMATICAL MODEL FOR THE PIANO STRING

For pedagogical purpose and for the sake of completeness, we are going to construct progressively our string model by successive modifications of the simplest possible model, namely the linearized vibrating string equation. We shall justify our successive enrichments of this model by the objectives of section 1. In our explanations, we do not pretend to a complete mathematical rigor (which would probably be out of reach or would demand lengthy and tedious technical developments) but aim at providing some intuition to the reader. When we will speak of linear or linearized models, we shall rather systematically refer to the spectral analysis of a “generalized harmonic oscillator”. By this expression, we mean an abstract linear evolution equation of the form

$$\frac{d^2U}{dt^2} + \mathcal{A}U = 0, \quad (2.1)$$

where the unknown function  $t \mapsto U(t)$  takes its values in some Hilbert space  $\mathcal{H}$  and  $\mathcal{A}$  denotes an unbounded positive self-adjoint operator in  $\mathcal{H}$ , with compact resolvent. The notion of mode of vibration, or eigenmode, for

equation (2.1) is linked to the research of a particular solution of the form

$$U(t) = U_a e^{\pm 2i\pi f t}, \quad U_a \in \mathcal{H}, \quad f \in \mathbb{R}^+ \quad (2.2)$$

which leads to find the frequency  $f$  such that  $\lambda = 4\pi^2 f^2$  is an eigenvalue of  $\mathcal{A}$ . Denoting  $\{4\pi^2 f_n^2, n \geq 0\}$  the spectrum of  $\mathcal{A}$ , where  $f_n$  is an increasing sequence of real numbers that tends to  $+\infty$ , the numbers  $f_n$  are, by definition, the eigenfrequencies of the harmonic oscillator. Moreover, introducing an orthonormal basis  $\{W_n \in \mathcal{H}, n \geq 0\}$  of related eigenfunctions of  $\mathcal{A}$ , it is well known that any “finite energy” solution of the free evolution problem (2.1) is of the form

$$U(t) = \sum_{n=0}^{+\infty} \sum_{\pm} u_n^{\pm} W_n e^{\pm 2i\pi f_n t} \quad (2.3)$$

where the real coefficients  $u_n^{\pm}$  satisfy appropriate summability conditions. From the above formula, it is straightforward to establish the coincidence between the frequencies  $f_n$  and the peaks of the spectrum of the “signal”  $U(t)$  (or a truncated version of it, namely  $U_T(t) = \chi_T(t) U(t)$  where  $\chi_T(t) \in [0, 1]$  is an appropriate cut-off function with support  $[0, T]$ ) namely :

$$f \longrightarrow \ln |\widehat{U}_T(f)|, \quad \widehat{U}_T(f) = \int_0^{+\infty} U_T(t) e^{-2i\pi f t} dt. \quad (2.4)$$

This will help us establish a link between a model of the form (2.1) and the experimental results of section 1.

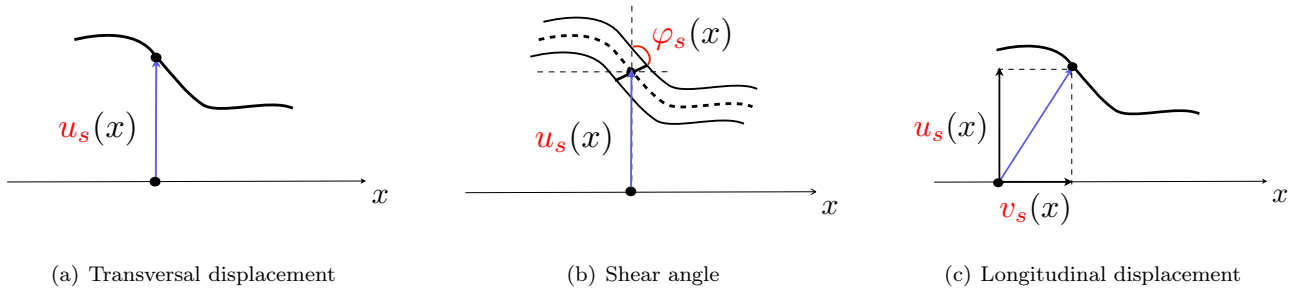


FIGURE 5. Schematic view of the strings' unknowns.

## 2.1. The vibrating string equation

The most common model for describing the transverse vibrations of a string assumes that the point of the string moves only transversely in a vertical plane along a line which is orthogonal to the string at rest (the reference configuration, represented by a segment  $[0, L]$ ). For now on, the index  $s$  refers to “string”. As a consequence, the only unknown of the model is  $u_s(x, t)$  the transverse displacement of the point of abscissa  $x$  (at rest) at time  $t$  (see figure 5(a)). Under the usual “small displacement” ( $u_s$  remains small with respect to  $L$ ) and “small deformations” ( $x$ -derivatives of  $u_s$  remain much smaller than 1) assumptions, the displacement field is governed by the d’Alembert’s equation (or 1D wave equation):

$$\rho A \partial_t^2 u_s - T_0 \partial_x^2 u_s = 0, \quad \forall x \in [0, L], \quad t > 0, \quad (2.5)$$

where, assuming that the string is homogeneous and of constant cross-section,  $\rho$  denotes its density,  $A$  the area of its section and  $T_0$  its tension at rest. The corresponding propagation velocity is

$$c_\tau = \sqrt{T_0/\rho A}. \quad (2.6)$$

where the index  $\tau$  refers to *transverse*.

If (2.5) is completed by homogeneous Dirichlet boundary conditions

$$u_s(0, t) = u_s(L, t) = 0, \quad t > 0, \quad (2.7)$$

which express that the string is fixed at its two extremities, one obtains, as it is well-known, an harmonic oscillator whose eigenfrequencies and corresponding eigenmodes  $w_n$  are given by

$$f_n^{Ale} = n f_0, \quad f_0^{Ale} = \frac{c_\tau}{2L}, \quad n \geq 1, \quad w_n(x) = \sqrt{\frac{2}{L}} \sin \frac{n\pi x}{L}. \quad (2.8)$$

The set  $\{f_n^{Ale}, n \geq 1\}$  forms what is called a “harmonic spectrum”, because it is made of frequencies that are integer multiples of a fundamental frequency  $f_0^{Ale}$  which is the musical pitch of the note.

**Remark 1.** *On a piano string, the Dirichlet condition at the first extremity of the string (let us say  $x = 0$ ) is completely justified by experimental data. It is no longer true, of course, that the bridge extremity ( $x = L$ ) does not move since this is precisely where the string’s oscillations are transmitted to the soundboard. However, due to the strong rigidity of the bridge, the amplitude of these oscillations remains quite small in comparison with the ones of the string’s central point. This is why the Dirichlet boundary condition can be seen as a reasonable approximate boundary condition for the string : in first approximation, analyzing the vibrations of the string in terms of the Dirichlet problem’s eigenmodes provides reliable insights about the physical reality. We shall see how the condition (2.7) must be modified when we shall treat the coupling with the soundboard (cf section 4.2).*

## 2.2. Stiffness and inharmonicity : the linear stiff string equation

### 2.2.1. The prestressed Timoshenko’s beam model.

Since the d’Alembert’s equation is unable to represent the inharmonicity of a piano sound, a more elaborate model has to be used : the stiff string model. In this model, one does not only take into account the transverse displacement of the string but also the fact that each cross section of the string can rotate with respect to the normal plane to the so-called neutral fiber of the string, as illustrated by figure 5(b). That is why one introduces an angle  $\varphi_s$  as a new unknown. One has then to take into account that a portion of string applies on the adjacent portions not only a tension but also a torque. The equations governing the variations of  $(u_s, \varphi_s)$ , called linear stiff string equations in the context of this paper, are given by the prestressed Timoshenko’s beam model. These equations involve new geometric and material properties of the string, namely the inertia momentum of the string’s cross section  $I$  and the Young’s and shear moduli, namely  $E$  and  $G$ , of the material composing the string. The parameter  $\kappa$ , called “Timoshenko’s parameter”, or “shear correction factor” is a dimensionless parameter, between 0 and 1 (see [Cow66] for a physical approach and [BDS93] for a mathematical discussion of its value).

$$\begin{cases} \rho A \partial_t^2 u_s - T_0 \partial_x^2 u_s + AG\kappa \partial_x (\varphi_s - \partial_x u_s) = 0, & x \in ]0, L[, \quad t > 0, & (2.9a) \\ \rho I \partial_t^2 \varphi_s - EI \partial_x^2 \varphi_s + AG\kappa (\varphi_s - \partial_x u_s) = 0, & x \in ]0, L[, \quad t > 0. & (2.9b) \end{cases}$$

It is possible, via a “dimensional analysis” to interpret the Timoshenko model as a perturbation of the d’Alembert model, considering the small dimensionless parameter:

$$\eta := \frac{d}{L} \quad \text{where } d \text{ is the diameter of the cross section of the string,} \quad (2.10)$$

where the string (at rest) is assimilated to a cylinder. Of course, the use of a 1D dimensional model is justified by the fact that  $\eta$  is small. From a dimensional analysis, we can write

$$A = \eta^2 A^*, \quad I = \eta^4 I^*. \quad (2.11)$$

On the other hand, to maintain the propagation velocity  $c_\tau$  of the transverse waves constant, and thus keep the same fundamental frequency  $f_0^{Ale}$ , one must compensate, in the limit process, the decay of the area of the cross section by decreasing the tension of the string, i.e. considering that

$$T_0 = \eta^2 T_0^*, \quad \text{which implies that } c_\tau \text{ and } f_0^{Ale} \text{ (cf. (2.6) and (2.8)) are independent of } \eta. \quad (2.12)$$

From the second equation of (2.9), one can write formally

$$\partial_x \varphi_s = \left( 1 + \eta^2 (A^* G \kappa)^{-1} \left[ \rho I^* \partial_t^2 - EI^* \partial_x^2 \right] \right)^{-1} \partial_x^2 u_s$$

which we can substitute into the first equation to obtain

$$\rho A^* \partial_t^2 u_s - T_0^* \partial_x^2 u_s + A^* G \kappa \left[ \left( 1 + \eta^2 (A^* G \kappa)^{-1} (\rho I^* \partial_t^2 - EI^* \partial_x^2) \right)^{-1} - 1 \right] \partial_x^2 u_s = 0 \quad (2.13)$$

that leads to a fourth order (in space and time) partial differential equation for  $u$  after applying the operator  $(\rho I^* \partial_t^2 - EI^* \partial_x^2)$  to both sides of the equation. However, the last term in (2.13) is small since formally:

$$\left[ \left( 1 + \eta^2 (A^* G \kappa)^{-1} \left[ \rho I^* \partial_t^2 - EI^* \partial_x^2 \right] \right)^{-1} - 1 \right] \sim -\eta^2 (A^* G \kappa)^{-1} \left[ \rho I^* \partial_t^2 - EI^* \partial_x^2 \right] \quad (\eta \rightarrow 0)$$

an this is why (2.13) is a (second order in  $\eta$ ) perturbation of the d'Alembert's equation.

In first approximation (in the sense of remark 1), equations (2.9) are naturally completed by “simply supported” boundary conditions, namely the homogeneous Dirichlet boundary conditions (2.7) for  $u_s$  plus a condition of “zero torque” at each extremity of the string, which amounts to imposing homogeneous Neumann boundary conditions for  $\varphi_s$ :

$$\partial_x \varphi_s(0, t) = 0, \quad \partial_x \varphi_s(L, t) = 0, \quad t > 0. \quad (2.14)$$

**Remark 2.** *The choice of this Neumann boundary condition is somewhat arbitrary and it is not clear that it is more justified, from a physical point of view, than a Dirichlet condition for instance. Both conditions have been tested numerically. We observed that, first, the boundary conditions did not influence strongly the most significative results and, second, that the Neumann condition led to slightly better results based on the comparison with experimental measurements. This is what led to our choice. Most likely, a deeper investigation of the real physics would lead to a more complicated boundary condition.*

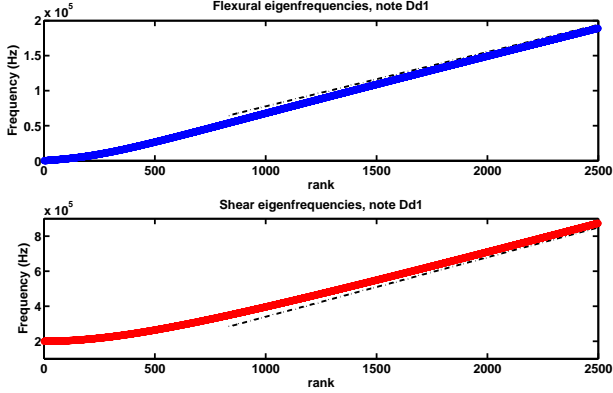
It is straightforward that (2.9, 2.7, 2.14) corresponds again to a generalized harmonic oscillator whose eigenfrequencies and corresponding eigenmodes can be determined analytically, thanks to the choice of boundary conditions (2.7, 2.14). We shall not detail here these analytical computations which are long and tedious but straightforward (see [CI12]) and shall restrict ourselves to describe the most useful results. As we have a system of two second order equations, it is not surprising that these modes can be split into two families of modes (the following splitting appears naturally in the analytical computations)

- the family of “flexural” modes, with frequencies  $\{f_n, n \geq 1\}$  and eigenmodes  $\{(w_n, \psi_n), n \geq 1\}$ ,
- the family of “shear” modes, with frequencies  $\{f_n^S, n \geq 1\}$  and eigenmodes  $\{(w_n^S, \psi_n^S), n \geq 1\}$ ,

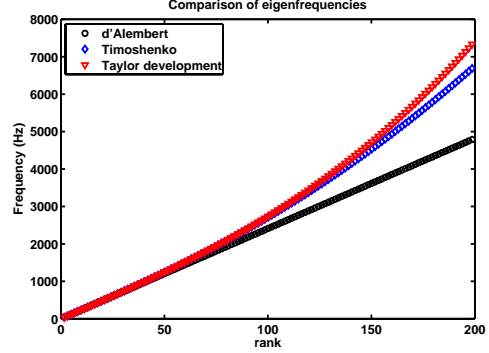


that satisfy  $f_{n+1} > f_n$ ,  $f_{n+1}^S > f_n^S$ ,  $f_n^S > f_n$ ,  $\forall n \geq 1$ .

We represent in figure 6(a) the “curves” of both families of frequencies with physical data that correspond to



(a) Flexural and shear eigenfrequencies of string D#1



(b) Comparison between d'Alembert eigenfrequencies, Timoshenko and its Taylor expansion of formula (2.15).

FIGURE 6. Eigenfrequencies of a stiff string

the string D#1 of the Steinway D, with a fundamental frequency of 38.89 Hz. A first striking fact is that shear modes eigenfrequencies are much larger than the flexural modes eigenfrequencies and are all above 20 kHz. As a consequence such modes can not contribute to a perceptible sound. Moreover, very high frequency sources should be needed for exciting these modes, which is not the case of the piano's hammer solicitations.

In figure 6(b), a closer look is given at the first 200 flexural eigenfrequencies that all belong to the interval  $[0, 7500]$  Hz. These are represented by the blue diamonds that progressively deviate, when  $n$  increases from the black circles corresponding to the harmonic spectrum of the d'Alembert's equation. We observe that these frequencies are exhibiting a behavior that is similar to the one of measured eigenfrequencies. To be more precise, using a Taylor expansion of their analytical expression gives:

$$f_n \approx n f_0 [1 + B n^2], \quad B = \frac{\pi^2 EI}{T_0 L^2} \left(1 - \frac{T_0}{EA}\right), \quad \text{for small enough values of } n\sqrt{B} \quad (2.15)$$

which correspond to the red triangles in figure 6(b). This shows that inharmonicity is indeed foreseen in this model, with an inharmonicity factor  $B$  (as defined in section 1, formula 1.4) which is typically, for real piano strings, of the order of  $10^{-4}$ . From the spectral point of view, the link between the Timoshenko and D'Alembert's model can be understood through an asymptotic analysis with respect to the small parameter  $\eta$  defined by (2.10). More precisely, one can show (modulo long and tedious computations) that, when  $\eta \rightarrow 0$

$$\lim_{\eta \rightarrow 0} f_n = f_n^{Ale}, \quad \lim_{\eta \rightarrow 0} f_n^S = +\infty \quad (\text{in } O(\eta^{-1})) \quad (2.16)$$

This gives a more analytic insight about what is observed on figures 6(a) and 6(b).

**Remark 3.** The fact that, in figure 6(b), the “curve” of the frequencies  $f_n$ 's is above the “curve” of the frequencies  $f_n^{Ale}$ 's is due to the fact that, for real piano strings  $T_0/EA \ll 1$ .

### 2.2.2. Timoshenko versus Euler-Bernoulli : a short discussion

There exists another well-known model that accounts for inharmonicity effects : the Euler-Bernoulli model. Contrary to the Timoshenko's model, the (scalar) unknown is the same as for the d'Alembert's model, namely the transverse displacement  $u_s$ . As the d'Alembert's model, the Euler-Bernoulli model can be recovered from a perturbation analysis for small values of the parameter  $\eta$  (see (2.10)), of the Timoshenko model. If we start from the equation (2.13) for  $u_s$ , instead of dropping the last term as in the previous section, one can retain the following  $O(\eta^4)$  formal approximation

$$\left[ \left( 1 + \eta^2 (A^* G \kappa)^{-1} \left[ \rho I^* \partial_t^2 - EI^* \partial_x^2 \right] \right)^{-1} - 1 \right] \sim -\eta^2 (A^* G \kappa)^{-1} \left[ \rho I^* \partial_t^2 - EI^* \partial_x^2 \right] \quad (\eta \rightarrow 0).$$

Doing so, one obtains an approximate equation for  $u$  which is of second order in time:

$$\rho \left( A^* - \eta^2 I^* \partial_x^2 \right) \partial_t^2 u_s - \left( T_0^* - \eta^2 EI^* \partial_x^2 \right) \partial_x^2 u_s = 0 \quad (2.17)$$

One can get rid of the  $\partial_x^2 \partial_t^2$  term by making the additional approximation

$$A^* - \eta^2 I^* \partial_x^2 \sim A^*, \quad (2.18)$$

which leads to the so-called Euler-Bernoulli model which, going back to our original notation, takes the form

$$\rho A \partial_t^2 u_s - T_0 \partial_x^2 u_s + EI \partial_x^4 u_s = 0. \quad (2.19)$$

When one replaces the Timoshenko model by the approximate Euler-Bernoulli's model, one replaces a fourth order in time equation for  $u_s$  (2.13) by a second order in time equation (2.19). As a consequence, the very high frequency modes associated to frequencies  $f_n^S$  disappear, leaving only one family of eigenmodes (as for the d'Alembert's equation) that are "approximations" (in  $\eta$ ) of the flexural modes associated to frequencies  $f_n$  of the Timoshenko's model. Nevertheless, contrary to d'Alembert's model, Euler-Bernoulli's model allows us to take into account inharmonicity effects since the corresponding frequencies are given by

$$f_n^{EB} = f_n^{Ale} \left( 1 + \frac{n^2 \pi^2 EI}{T_0 L^2} \right)^{\frac{1}{2}} \quad (2.20)$$

which yields in particular

$$f_n^{EB} \approx n f_0 [1 + B^{EB} n^2], \quad B^{EB} = \frac{\pi^2 EI}{2T_0 L^2}, \quad \text{for small enough values of } n\sqrt{B^{EB}} \quad (2.21)$$

The reader will note that the Timoshenko and Euler-Bernoulli's model lead to different inharmonicity factors (cf. (2.15) and (2.21)). In practice, for real piano strings, since  $T_0/EA$  is very small with respect to 1 (as already mentioned in remark 3), these are not much different. It is also difficult to decide which model is closer to the physical reality, even though the Timoshenko's model seems to be richer from the physical point of view. This question is still a subject of debate in the acoustics/mechanics community. The reason why we have preferred the Timoshenko's model in this work comes more from practical arguments : even though it introduces an additional unknown, it avoids to deal with fourth order spatial differential operators, which is easier from the numerical point of view.

## 2.3. Taking into account the longitudinal displacement: the geometrically exact model

### 2.3.1. Derivation of the geometrically exact model

Up to now, we did not mention the longitudinal displacements of the strings. Let us forget for a while the rotations of the cross-sections of the string and the stiffness unknown  $\varphi_s$  to come back to a model where the

motion of the string is described only through the displacement of the neutral fiber's points, as for the vibrating string equation. The difference is that this displacement is allowed to have a longitudinal component, denoted  $v_s$  (see figure 5(c)). This leads to the so-called “geometrically exact model” (GEM), as derived in [MI68], that is established without referring to any “small displacement” or “small deformation” assumption. Let us denote  $\mathbf{u}_s(x, t) = (u_s(x, t), v_s(x, t))$  the displacement vector at point  $x$  (in the reference configuration) and time  $t$ , and  $\mathbf{T}(x, t)$  the tension of the string at the same point and same instant, which represents the action of the portion of string  $[x, L]$  on the portion  $[0, x]$ . From the fundamental law of dynamics, these are related by

$$\partial_t^2 \mathbf{u}_s - \partial_x \mathbf{T} = 0. \quad (2.22)$$

The relation between  $\mathbf{T}$  and the deformation of the string comes from the fact that

- $\mathbf{T}(x, t)$  is tangent to the deformed string at  $(x, t)$  :  $\mathbf{T}$  is colinear to  $(\partial_x u, 1 + \partial_x v)$ , which yields

$$\mathbf{T} = T [(\partial_x u_s)^2 + (1 + \partial_x v_s)^2]^{\frac{1}{2}} (\partial_x u, 1 + \partial_x v_s)^t, \quad T \in \mathbb{R}, \quad (2.23)$$

- $T$  is the sum of the initial tension  $T_0$  at rest and, by Hooke's law (assuming a linear behavior of the material), a term which is proportional to the infinitesimal elongation  $\mathbf{a}(x, t) \in \mathbb{R}$  of the string at point  $x$  and time  $t$  (meaning that a small element of string of length  $\Delta x$  centered at point  $x$  at  $t = 0$  has a length, after deformation, equal to  $(1 + \mathbf{a})\Delta x + O(\Delta x^2)$ ). This gives, thanks to elementary geometry

$$T = T_0 + E A \mathbf{a}, \quad \mathbf{a} = ((\partial_x u_s)^2 + (1 + \partial_x v_s)^2)^{\frac{1}{2}} - 1. \quad (2.24)$$

Substituting the expression of  $\mathbf{T}$  into (2.22) leads to the following  $2 \times 2$  system of nonlinear equations :

$$\left\{ \begin{array}{l} \rho A \partial_t^2 u_s - \partial_x \left[ EA \partial_x u_s - (EA - T_0) \frac{\partial_x u_s}{((\partial_x u_s)^2 + (1 + \partial_x v_s)^2)^{\frac{1}{2}}} \right] = 0, x \in ]0, L[, \quad t > 0, \quad (2.25a) \\ \rho A \partial_t^2 v_s - \partial_x \left[ EA \partial_x v_s - (EA - T_0) \frac{(1 + \partial_x v_s)}{((\partial_x u_s)^2 + (1 + \partial_x v_s)^2)^{\frac{1}{2}}} \right] = 0, x \in ]0, L[, \quad t > 0. \quad (2.25b) \end{array} \right.$$

Note that, since the material is assumed to have a linear behavior, the only nonlinearity of the model comes from geometrical nonlinearities (due to the elongation  $\mathbf{a}$ ) which justifies the name “geometrically exact” model.

In the case of a finite string, equations (2.25) have to be completed by boundary conditions, for instance by expressing that the string is fixed at its two extremities (which is realistic in first approximation for the piano, see remark 1 again) which gives (2.7) for  $u_s$  and

$$v_s(0, t) = v_s(L, t) = 0, \quad t > 0, \quad (2.26)$$

### 2.3.2. Mathematical structure and properties of the model

One can check that this system can be put into a second order hamiltonian form by introducing the elastic potential energy density function  $H(u, v) : \mathbb{R}^2 \rightarrow \mathbb{R}^+$  defined by

$$H(u, v) = \frac{1}{2} EA (u^2 + v^2) - (EA - T_0) \left[ (u^2 + (1 + v)^2)^{\frac{1}{2}} - (1 + v) \right] \quad (2.27)$$

Verifying that  $H$  is a positive function is left to the reader. It is then easy to verify that the tension  $\mathbf{T}$  of the string is given by

$$\mathbf{T} = \nabla H(\partial_x u_s, \partial_x v_s) \quad (2.28)$$

which means that (2.25) can be rewritten as:

$$\rho A \partial_t^2 \mathbf{u}_s - \partial_x (\nabla H(\partial_x \mathbf{u}_s)) = 0. \quad (2.29)$$

One can then show that (2.29) also enters the category of (locally) nonlinear hyperbolic systems. Indeed, introducing the new unknown vector:

$$\mathbf{U} = (\partial_t \mathbf{u}_s, \partial_x \mathbf{u}_s) \in \mathbb{R}^4 \quad (2.30)$$

(2.29) can be rewritten as a first order system

$$\partial_t \mathbf{U} + \partial_x F(\mathbf{U}) = 0. \quad (2.31)$$

where, denoting  $U = (U_t, U_x) \in \mathbb{R}^2 \times \mathbb{R}^2$  the current vector of  $\mathbb{R}^4$ , the flux function  $F$  is given by

$$F(U) \equiv F(U_t, U_x) = -(\rho A)^{-1} (\nabla H(U_x), U_t)^t. \quad (2.32)$$

The Jacobian of  $F$  has the following  $2 \times 2$  block decomposition

$$DF(U) = -(\rho A)^{-1} \begin{pmatrix} 0 & D^2 H(U_x) \\ I & 0 \end{pmatrix} \quad (2.33)$$

from which we infer that the eigenvalues of  $DF(U)$  are the square roots of the eigenvalues of  $D^2 H(U_x)$ , where  $D^2 H$  is the Hessian of  $H$ , multiplied by  $(\rho A)^{-1}$ . It follows that the local (strict) hyperbolicity of the system (2.31), namely the fact that  $DF(U)$  is diagonalizable with real eigenvalues at least for  $|U|$  small enough, follows from the local (strict) convexity of  $H(u, v)$ . This is deduced from the Taylor expansion of  $H(u, v)$  around the origin

$$H(u, v) = H_2(u, v) + \mathcal{O}((u^2 + v^2)^2), \quad H_2(u, v) = \frac{T_0}{2} u^2 + \frac{EA}{2} v^2. \quad (2.34)$$

We can visualize the region of convexity of  $H$  in the  $(u, v)$  plane (and thus the region of hyperbolicity of (2.31)) on figure 7(a) where we represent the level lines of  $H(u, v)$ .

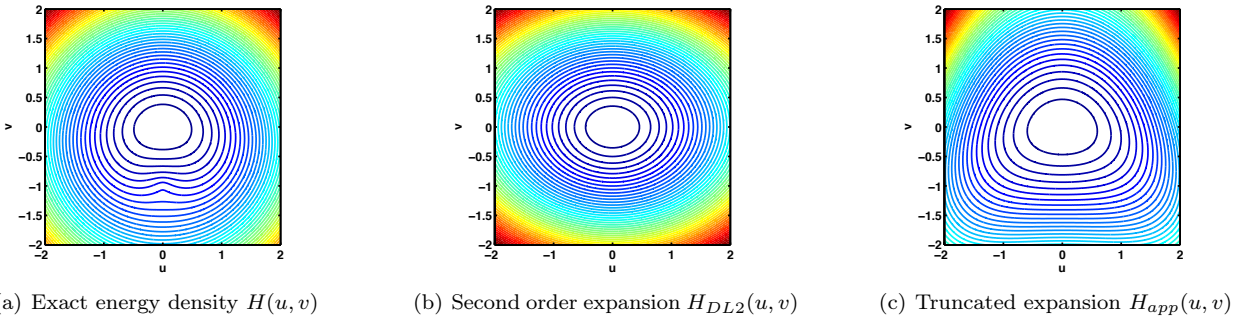


FIGURE 7. Level sets around the point  $(0, 0)$  of the energy density  $H(u, v)$  and its approximations. The physical parameters have been chosen so that  $T_0/EA = 0.6$ , which emphasizes the visualization of the convexity loss.

In addition, it can be shown that the system is, in its region of hyperbolicity, linearly degenerate. That is, if  $\{\pm \lambda_j(U), j \in \{1, 2\}\}$  are the (real) eigenvalues of  $DF(U)$  with corresponding eigenvectors (in  $\mathbb{R}^4$ )

$\{r_1^\pm(U), r_2^\pm(U)\}$ , then  $\nabla \lambda_j(U) \in \mathbb{R}^4$  is orthogonal to  $r_j^\pm(U)$ ,  $j \in \{1, 2\}$  (the calculations are done in [CJ10]). This has nice mathematical consequences, which seem to be physically relevant : in particular, the existence and uniqueness of smooth ( $C^2$  in space and time) global solutions for the Cauchy problem associated to (2.29) (or equivalently (2.31)) provided that the initial data are smooth enough, in the  $C^2$  norm (see for instance [TT94]).

An important consequence of the structure of (2.29) is that sufficiently smooth solutions satisfy an energy conservation result, namely

$$\frac{d}{dt} \mathcal{E}_s(\mathbf{u}_s) = 0, \quad \mathcal{E}_s(\mathbf{u}_s) = \frac{1}{2} \int_0^L \rho A |\partial_t \mathbf{u}_s|^2 dx + \int_0^L H(\partial_x \mathbf{u}_s) dx. \quad (2.35)$$

This provides a fundamental stability property for the model since a priori estimates (in  $H^1$ -norm) are easily deduced from this energy conservation result.

### 2.3.3. The linearized model

In the case of small amplitude motions, it is natural to use a linearized model obtained by replacing in (2.29)  $H(u, v)$  by its quadratic approximation  $H_2(u, v)$  (see (2.34)). Doing so, one obtains two decoupled 1D wave equations, the first one coincides with the vibrating string equation (2.5):

$$\begin{cases} \rho A \partial_t^2 u_s - T_0 \partial_x^2 u_s = 0, \text{ with velocity } c_\tau = \sqrt{T_0/\rho A} & (2.36a) \\ \rho A \partial_t^2 v_s - E A \partial_x^2 v_s = 0, \text{ with velocity } c_\ell = \sqrt{E/\rho} & (2.36b) \end{cases}$$

where the index  $\ell$  stands for *longitudinal*. Taking realistic values for  $\rho$ ,  $A$ ,  $E$  and  $I$  for real piano strings one observes that

$$\frac{c_\ell}{c_\tau} \geq 10, \quad (2.37)$$

which means that longitudinal waves propagate much faster than transverse waves : this explains the role of the string's longitudinal vibrations in the existence of the sound precursor. However, for our purpose, the decoupled linear model (2.36) is not satisfactory. Indeed in the case of a transverse solicitation as the hammer's, a source term will appear only at the right hand side of the first equation, which means that  $v_s$  will remain identically 0 and that the longitudinal vibrations cannot be observed. This objection no longer holds for the exact model (2.25) because of the nonlinear coupling between the two equations. Even if a source term appears only on the first equation of (2.25),  $v_s$  will not remain 0 since  $\frac{\partial H}{\partial v}(u, 0) \neq 0$  ! This is the first motivation to keep the nonlinear model.

Nevertheless, the linear model (2.36) will be useful to “analyze” (in first approximation) the behavior of the solution of the exact model (2.25) in the case where the deformations are not too large : it gives the tangent harmonic oscillator at the origin of the nonlinear evolution problem (2.25). In particular, the spectrum of this harmonic oscillator is made of the union of two harmonic spectra:

- the transverse harmonic spectrum  $\{f_n^{Ale} = n f_0^{Ale}, n \geq 1\}$ ,  $f_0^{Ale} = \frac{c_\tau}{2L}$
- the longitudinal harmonic spectrum  $\{f_n^\ell = n f_0^\ell, n \geq 1\}$ ,  $f_0^\ell = \frac{c_\ell}{2L}$

Note that in practice, because of the velocity contrast (2.37),  $f_n^\ell \geq 10 f_n^{Ale}$  and the transverse spectrum is much denser than the longitudinal spectrum. However the intersection between longitudinal spectrum and the range of audible frequencies, namely,  $[0, 20]$  kHz  $\cap \{f_n^\ell = n f_0^\ell, n \geq 1\}$  is non empty for most piano strings (except for the two highest octaves) : for instance, for the note D#1, in this interval of frequencies, there are typically 20 “longitudinal eigenfrequencies” (versus 200 “transverse frequencies” ).

### 2.3.4. An approximate model with polynomial nonlinearities

Still in the case of small amplitude motion, one can obtain approximate models (hopefully more accurate than the linear model (2.36)) by replacing  $H(u, v)$  by other approximations at the origin than  $H_2(u, v)$ . Let us present below a model, which generates only polynomial nonlinearities. Because of that property, it has been used for instance in [Bil05] for numerical approximation, or in [BS05] for more analytical purposes. This model is obtained from an “anisotropic” quartic approximation of  $H(u, v)$  in the sense that it is obtained from a Taylor expansion which is of fourth order in  $u$  but only second order in  $v$ :

$$H(u, v) = H_{app}(u, v) + O(u^4 + v^2), \quad H_{app}(u, v) = \frac{T_0}{2} u^2 + \frac{T_0}{2} v^2 + \frac{EA - T_0}{2} \left(v + \frac{u^2}{2}\right)^2. \quad (2.38)$$

This type of anisotropic approximation is justified in the case where the string is transversally solicited (see [CCJ12]). To be more explicit let us introduce the two functions

$$T_\tau(u, v) = \frac{\partial H}{\partial u}(u, v), \quad T_\ell(u, v) = \frac{\partial H}{\partial v}(u, v) \quad (2.39)$$

so that  $T_\tau(\partial_x u_s, \partial_x v_s)$  and  $T_\ell(\partial_x u_s, \partial_x v_s)$  are respectively the transverse and longitudinal components of the tension  $\mathbf{T}$  of the string and consider the equations with a transverse source term, of small amplitude  $\varepsilon$ , hence for the equation in  $u_s$  only:

$$\left\{ \begin{array}{l} \rho A \partial_t^2 u_s^\varepsilon - \partial_x [T_\tau(\partial_x u_s^\varepsilon, \partial_x v_s^\varepsilon)] = \varepsilon f(t), \\ \rho A \partial_t^2 v_s^\varepsilon - \partial_x [T_\ell(\partial_x u_s^\varepsilon, \partial_x v_s^\varepsilon)] = 0, \end{array} \right. \quad (2.40a)$$

$$\left\{ \begin{array}{l} \rho A \partial_t^2 u_s^\varepsilon - \partial_x [T_\tau(\partial_x u_s^\varepsilon, \partial_x v_s^\varepsilon)] = \varepsilon f(t), \\ \rho A \partial_t^2 v_s^\varepsilon - \partial_x [T_\ell(\partial_x u_s^\varepsilon, \partial_x v_s^\varepsilon)] = 0, \end{array} \right. \quad (2.40b)$$

It is easy to see formally that

$$u_s^\varepsilon = O(\varepsilon), \quad v_s^\varepsilon = O(\varepsilon^2). \quad (2.41)$$

In other words longitudinal vibrations have a much smaller amplitude than transverse ones. As a consequence, from (2.38), one deduces that

$$H(u_s^\varepsilon, v_s^\varepsilon) = H_{app}(u_s^\varepsilon, v_s^\varepsilon) + O(\varepsilon^4). \quad (2.42)$$

According to (2.38), one has

$$\left\{ \begin{array}{l} T_\tau(u, v) = T_0 u + (EA - T_0)(uv + \frac{1}{2} u^3) + O(u^4 + v^2) \\ T_\ell(u, v) = EA v + \frac{1}{2} (EA - T_0) u^2 + O(u^4 + v^2) \end{array} \right. \quad (2.43a)$$

$$\left\{ \begin{array}{l} T_\tau(u, v) = T_0 u + (EA - T_0)(uv + \frac{1}{2} u^3) + O(u^4 + v^2) \\ T_\ell(u, v) = EA v + \frac{1}{2} (EA - T_0) u^2 + O(u^4 + v^2) \end{array} \right. \quad (2.43b)$$

so that, replacing  $H$  by  $H_{app}$  in (2.29), we obtain the following coupled system of equations

$$\left\{ \begin{array}{l} \rho A \partial_t^2 u_s - \partial_x \left[ T_0 \partial_x u_s + (EA - T_0) \left( \partial_x u_s \partial_x v_s + \frac{1}{2} (\partial_x u_s)^3 \right) \right] = 0, \\ \rho A \partial_t^2 v_s - \partial_x \left[ EA \partial_x v_s + \frac{EA - T_0}{2} (\partial_x u_s)^2 \right] = 0, \end{array} \right. \quad (2.44a)$$

$$\left\{ \begin{array}{l} \rho A \partial_t^2 u_s - \partial_x \left[ T_0 \partial_x u_s + (EA - T_0) \left( \partial_x u_s \partial_x v_s + \frac{1}{2} (\partial_x u_s)^3 \right) \right] = 0, \\ \rho A \partial_t^2 v_s - \partial_x \left[ EA \partial_x v_s + \frac{EA - T_0}{2} (\partial_x u_s)^2 \right] = 0, \end{array} \right. \quad (2.44b)$$

In our work, we shall use the exact model but this model will be helpful for the interpretation of some of the numerical results provided by our model.

**Remark 4.** *Proceeding as in section 2.3.2, it is clear that the first order system corresponding to the approximate model (2.44) is still locally hyperbolic (see also figure 7(c)). However, it can be shown that it is genuinely*

nonlinear. As a consequence “shocks”, namely discontinuities of  $\partial_t u_s$  and  $\partial_x u_s$  (which implies the presence of kinks in the deformed shape of the string, which seems unphysical) will develop in finite time, even with arbitrarily smooth and small data.

The energy conserved for smooth solutions of (2.44) is of course

$$\mathcal{E}_s^{app}(\mathbf{u}_s) = \frac{1}{2} \int_0^L \rho A |\partial_t \mathbf{u}_s|^2 dx + \int_0^L H_{app}(\partial_x \mathbf{u}_s) dx. \quad (2.45)$$

The reader will note that the positivity of  $H_{app}(u, v)$ , and thus good stability properties of the model via energy estimates, is only granted provided that  $EA \geq T_0$ , which was not needed for the exact model but is nevertheless true for real piano strings.

## 2.4. Combining longitudinal vibrations and inharmonicity: the nonlinear stiff string model

### 2.4.1. The model for planar motions

The model we shall propose for modeling a piano string aims (in the absence of damping phenomena - see section 2.5) at combining the inharmonicity effects obtained with the linear stiff string model of section 2.2 with the longitudinal / transverse vibrations coupling effects provided by the geometrically exact model of section 2.3. That is why we proposed a model with three scalar unknowns:

- the transverse component of the displacement (in a vertical plane) :  $u_s(x, t)$ ,
- the longitudinal component of the displacement :  $v_s(x, t)$ ,
- the angle of rotation of cross sections (in a vertical plane) :  $\varphi_s(x, t)$ ,

that is obtained by “concatenation” of both models (2.9) and (2.25). Seen as a modification of the geometrically exact model, this consists of the following operations:

- In the equation (2.22) for the displacement field  $\mathbf{u}_s = (u_s, v_s)$ , the tension  $\mathbf{T}$ , given by (2.23) for the geometrically exact model (2.25), is modified by adding the contribution due to the rotation of the cross sections, namely (note that only the transverse component of the tension is affected)

$$\mathbf{T} = T \left( (\partial_x u_s)^2 + (1 + \partial_x v_s)^2 \right)^{\frac{1}{2}} (\partial_x u_s, 1 + \partial_x v_s)^t + (AG\kappa (\varphi_s - \partial_x u_s), 0)^t \quad (2.46)$$

where  $T$  is still given by (2.24).

- the two equations for  $(u_s, v_s)$  are completed by the equation governing  $\varphi_s$  from the Timoshenko model.

Consequently, the longitudinal and transverse component of the tension  $\mathbf{T}$  are given by

$$\begin{cases} T_\tau = EA \partial_x u_s - (EA - T_0) \frac{\partial_x u_s}{\left( (\partial_x u_s)^2 + (1 + \partial_x v_s)^2 \right)^{\frac{1}{2}}} + AG\kappa (\varphi_s - \partial_x u_s) \\ T_\ell = EA \partial_x v_s - (EA - T_0) \frac{(1 + \partial_x v_s)}{\left( (\partial_x u_s)^2 + (1 + \partial_x v_s)^2 \right)^{\frac{1}{2}}} \end{cases} \quad (2.47)$$

which leads to the following nonlinear system that we shall refer to as the *nonlinear stiff string model*:

$$\left\{ \begin{array}{l} \rho A \partial_t^2 u_s - \partial_x \left[ EA \partial_x u_s - (EA - T_0) \frac{\partial_x u_s}{((\partial_x u_s)^2 + (1 + \partial_x v_s)^2)^{\frac{1}{2}}} \right] \\ \quad + \partial_x (AG\kappa (\varphi_s - \partial_x u_s)) = 0, \quad x \in ]0, L[, \quad t > 0, \\ \rho A \partial_t^2 v_s - \partial_x \left[ EA \partial_x v_s - (EA - T_0) \frac{(1 + \partial_x v_s)}{((\partial_x u_s)^2 + (1 + \partial_x v_s)^2)^{\frac{1}{2}}} \right] = 0, \quad x \in ]0, L[, \quad t > 0, \\ \rho I \partial_t^2 \varphi_s - \partial_x (EI \partial_x \varphi_s) + AG\kappa (\varphi_s - \partial_x u_s) = 0, \quad x \in ]0, L[, \quad t > 0. \end{array} \right. \quad (2.48)$$

This system will be completed, in first approximation, by the boundary conditions (2.7, 2.26, 2.14). Note that the ‘‘tangent’’ harmonic oscillator to this system at the origin is made of the (decoupled) union of the Timoshenko’s model (2.9) in  $(u_s, \varphi_s)$  (with boundary conditions (2.7 - 2.14) ) with the 1D wave equation (2.36b) for  $v_s$  (with boundary conditions (2.26) ). The spectrum of the linearized model is thus the union of three parts

$$\{f_n, n \geq 1\} \cup \{f_n^\ell, n \geq 1\} \cup \{f_n^S, n \geq 1\} \quad (2.49)$$

where we recall that

- the first part  $\{f_n, n \geq 1\}$  is an inharmonic spectrum corresponding to flexural modes (section 2.2),
- the second part  $\{f_n^\ell, n \geq 1\}$  is a harmonic spectrum corresponding to longitudinal modes (section 2.3),
- the third part  $\{f_n^S, n \geq 1\}$  (shear modes) does not intersect the set of audible frequencies (section 2.2).

We shall call the model (2.48) the *stiff nonlinear string model*. For conciseness of our presentation, it will be useful to rewrite (2.48) in a more compact and abstract form. This is the object of the next subsection.

#### 2.4.2. An abstract model for generalized non linear string equations.

Let us start from an energy density function of  $2N$  variables:

$$\mathbf{H}(\mathbf{p}, \mathbf{q}) : \mathbb{R}^N \times \mathbb{R}^N \longrightarrow \mathbb{R}^+. \quad (2.50)$$

We shall denote respectively  $\nabla_{\mathbf{p}} \mathbf{H}(\mathbf{p}, \mathbf{q}) \in \mathbb{R}^N$  and  $\nabla_{\mathbf{q}} \mathbf{H}(\mathbf{p}, \mathbf{q}) \in \mathbb{R}^N$  the partial gradients of  $\mathbf{H}(\mathbf{p}, \mathbf{q})$  with respect to  $\mathbf{p}$  and  $\mathbf{q}$  respectively. Moreover, splitting the set of indices  $\{1, \dots, N\}$  as:

$$\{1, \dots, N\} = \mathcal{I}_D \cup \mathcal{I}_N, \quad \mathcal{I}_D \cap \mathcal{I}_N = \emptyset, \quad (2.51)$$

we introduce the orthogonal projector  $\mathbf{J}$  from  $\mathbb{R}^N$  onto

$$V_D = \{\mathbf{q} = (q_j)_{1 \leq j \leq N} \mid q_j = 0 \text{ if } j \in \mathcal{I}_D\}. \quad (2.52)$$



The *abstract string model* then reads

$$\left\{ \begin{array}{l} \text{Find } \mathbf{q}(x, t) : [0, L] \times \mathbb{R}^+ \longrightarrow \mathbb{R}^N \text{ such that} \\ \mathbf{M} \partial_t^2 \mathbf{q} - \partial_x (\nabla_p \mathbf{H}(\partial_x \mathbf{q}, \mathbf{q})) + \nabla_q \mathbf{H}(\partial_x \mathbf{q}, \mathbf{q}) = 0 \quad x \in ]0, L[, \quad t > 0, \\ \mathbf{J} \mathbf{q}(0, t) = \mathbf{J} \mathbf{q}(L, t) = 0, \quad t > 0. \\ (Id - \mathbf{J}) \nabla_p \mathbf{H}(\partial_x \mathbf{q}, \mathbf{q})(0, t) = (Id - \mathbf{J}) \nabla_p \mathbf{H}(\partial_x \mathbf{q}, \mathbf{q})(L, t) = 0, \quad t > 0. \end{array} \right. \quad (2.53)$$

in which  $\mathbf{q}(x, t) \in \mathbb{R}^N$  is the vector of “generalized” string unknowns while  $\nabla_p \mathbf{H}(\partial_x \mathbf{q}, \mathbf{q})$  is the vector of generalized efforts from which we can define the generalized tension

$$\mathbf{T} = \mathbf{J} \nabla_p \mathbf{H}(\partial_x \mathbf{q}, \mathbf{q}) \quad (2.54)$$

which coincides with the physical tension  $\mathbf{T}$  given by (2.46) when  $\mathbf{H}$  is given by (2.59)) while

$$(I - \mathbf{J}) \nabla_p \mathbf{H}(\partial_x \mathbf{q}, \mathbf{q})$$

is the “generalized” torque. The boundary conditions can be interpreted as “mixed Dirichlet-Neumann” boundary conditions in the sense that :

- $\{q_j, j \in \mathcal{I}_D\}$  are the unknowns to which a homogeneous Dirichlet condition is applied,
- The conditions  $\partial_{p_j} \mathbf{H}(\partial_x \mathbf{q}, \mathbf{q}) = 0, j \in \mathcal{I}_N$ , are generalized homogeneous Neumann conditions.

Once again, an energy conservation result is associated with (2.53). More precisely, any sufficiently smooth solution of (2.53) satisfies:

$$\frac{d}{dt} \mathcal{E}_s(\mathbf{q}) = 0, \quad \mathcal{E}_s(\mathbf{q}) = \frac{1}{2} \int_0^L \mathbf{M} \partial_t \mathbf{q} \cdot \partial_t \mathbf{q} \, dx + \int_0^L \mathbf{H}(\partial_x \mathbf{q}, \mathbf{q}) \, dx. \quad (2.55)$$

The proof is quite standard and the details are left to the reader. One takes the inner product in  $\mathbb{R}^N$  between the first equation of (2.53) and  $\partial_t \mathbf{q}$ , and integrate in space over  $[0, L]$ . Then, the following two ingredients are used for treating the second term of the first equation of (2.53), after integration by parts,

- For the integral part, one uses the chain rule

$$\partial_t (\mathbf{H}(\partial_x \mathbf{q}, \mathbf{q})) = \nabla_p \mathbf{H}(\partial_x \mathbf{q}, \mathbf{q}) \cdot \partial_{xt}^2 \mathbf{q} + \nabla_q \mathbf{H}(\partial_x \mathbf{q}, \mathbf{q}) \cdot \partial_t \mathbf{q}. \quad (2.56)$$

- For the boundary terms at  $x = 0$  and  $L$ , one writes

$$\nabla_p \mathbf{H}(\partial_x \mathbf{q}, \mathbf{q}) \cdot \partial_t \mathbf{q} = (Id - \mathbf{J}) \nabla_p \mathbf{H}(\partial_x \mathbf{q}, \mathbf{q}) \cdot \partial_t \mathbf{q} + \nabla_p \mathbf{H}(\partial_x \mathbf{q}, \mathbf{q}) \cdot \mathbf{J} \partial_t \mathbf{q}. \quad (2.57)$$

It is an exercise to check that (2.48, 2.7, 2.14, 2.26) enters this general framework with:

$$N = 3, \quad \mathcal{I}_D = \{1, 2\}, \quad \mathbf{q} = (u_s, v_s, \varphi_s), \quad \mathbf{M} = \begin{pmatrix} \rho A & 0 & 0 \\ 0 & \rho A & 0 \\ 0 & 0 & \rho I \end{pmatrix} \quad (2.58)$$

and the energy density function given by

$$\begin{aligned} \mathbf{H}(\mathbf{p}, \mathbf{q}) &= \frac{1}{2} T_0 |p_1|^2 + \frac{1}{2} EA |p_2|^2 + \frac{1}{2} EI |p_3|^2 + \frac{1}{2} AG\kappa |q_3 - p_1|^2 \\ &+ (EA - T_0) \left[ \frac{1}{2} |p_1|^2 + (1 + p_2) - \sqrt{p_1^2 + (1 + p_2)^2} \right]. \end{aligned} \quad (2.59)$$

For numerical purposes again, it will be useful to separate the energy density function  $\mathbf{H}(\mathbf{p}, \mathbf{q})$  as the sum of its “quadratic part”, defined as the quadratic form which approaches  $\mathbf{H}(\mathbf{p}, \mathbf{q})$  at third order at the neighborhood of the origin, from its “non quadratic part”, namely the rest. Looking more closely at the expression of  $\mathbf{H}$  in (2.59), we see that it is of the form (note in particular that the non quadratic part of  $\mathbf{H}$  only depends on  $\mathbf{p}$ ):

$$\mathbf{H}(\mathbf{p}, \mathbf{q}) = \mathbf{H}_2(\mathbf{p}, \mathbf{q}) + \mathcal{U}(\mathbf{p}), \quad \mathcal{U}(\mathbf{p}) = O(|\mathbf{p}|^3) \quad (|\mathbf{p}| \rightarrow 0) \quad (2.60)$$

where  $\mathbf{H}_2(\mathbf{p}, \mathbf{q})$  is given by ( $\cdot$  represents below the inner product in  $\mathbb{R}^N$  or  $\mathbb{R}^{2N}$  depending on the context)

$$\mathbf{H}_2(\mathbf{p}, \mathbf{q}) = \frac{1}{2} \begin{pmatrix} \mathbf{A} & \mathbf{B} \\ \mathbf{B}^t & \mathbf{C} \end{pmatrix} \begin{pmatrix} \mathbf{p} \\ \mathbf{q} \end{pmatrix} \cdot \begin{pmatrix} \mathbf{p} \\ \mathbf{q} \end{pmatrix} \equiv \frac{1}{2} (\mathbf{A} \mathbf{p} \cdot \mathbf{p} + \mathbf{C} \mathbf{q} \cdot \mathbf{q} + 2 \mathbf{B} \mathbf{q} \cdot \mathbf{p}) \quad (2.61)$$

and  $(\mathbf{A}, \mathbf{B}, \mathbf{C})$  are real  $N \times N$  matrices with  $(\mathbf{A}, \mathbf{C})$  symmetric and positive. In other words  $\mathbf{H}_2$  represents the second order Taylor expansion of  $\mathbf{H}$  at the origin and  $\mathcal{U}$  is the rest (the difference with  $\mathbf{H}$ ) that we suppose to depend only of the variable  $\mathbf{p}$ . This decomposition allows us to see our nonlinear model as a perturbation of the tangent linearized model around the origin.

With (2.60) and (2.61), the partial differential equation in (2.53) can be rewritten

$$\mathbf{M} \partial_t^2 \mathbf{q} - \partial_x (\mathbf{A} \partial_x \mathbf{q}) - \partial_x (\mathbf{B} \mathbf{q}) + {}^t \mathbf{B} \partial_x \mathbf{q} + \mathbf{C} \mathbf{q} + \partial_x (\nabla \mathcal{U}(\partial_x \mathbf{q})) = 0 \quad (2.62)$$

In (2.62),  $\partial_x (\nabla \mathcal{U}(\partial_x \mathbf{q}))$  represents the “nonlinear part” of the model while the other terms constitute the “linear part” of the model or equivalently the “tangent” harmonic oscillator. These two parts of the model will be treated differently when we shall deal with the time discretization of the problem.

In the particular case of the energy density (2.59), (2.60, 2.61) hold with

$$\mathbf{A} = \begin{pmatrix} T_0 + AG\kappa & 0 & 0 \\ 0 & EA & 0 \\ 0 & 0 & EI \end{pmatrix}, \quad \mathbf{B} = \begin{pmatrix} 0 & 0 & -AG\kappa \\ 0 & 0 & 0 \\ 0 & 0 & 0 \end{pmatrix}, \quad \mathbf{C} = \begin{pmatrix} 0 & 0 & 0 \\ 0 & 0 & 0 \\ 0 & 0 & AG\kappa \end{pmatrix}, \quad (2.63)$$

$$\mathcal{U}(\mathbf{p}) = (EA - T_0) \left[ \frac{p_1^2}{2} + (1 + p_2) - \sqrt{p_1^2 + (1 + p_2)^2} \right]. \quad (2.64)$$

Note that, separately,  $\mathbf{H}_2(\mathbf{p}, \mathbf{q})$  and  $\mathcal{U}(\mathbf{p})$  are not necessarily positive (for instance, this is not the case with (2.63, 2.64)) but their sum is. Such a property is in particular satisfied if one can decompose the matrix  $\mathbf{A}$  as

$$\mathbf{A} = \mathbf{A}_S + \mathbf{A}_T \text{ such that } \begin{pmatrix} \mathbf{C} & {}^t \mathbf{B} \\ \mathbf{B} & \mathbf{A}_T \end{pmatrix} \text{ is a positive matrix, and } \frac{1}{2} \mathbf{A}_S \mathbf{q} \cdot \mathbf{q} + \mathcal{U}(\mathbf{q}) \geq 0, \quad \forall \mathbf{q} \in \mathbb{R}^N. \quad (2.65)$$

In the following, we shall assume that (2.65) holds. This will be important for the stability analysis of our numerical method. In particular, (2.65) holds for (2.63, 2.64) with:

$$\mathbf{A}_S = \begin{pmatrix} T_0 & 0 & 0 \\ 0 & EA & 0 \\ 0 & 0 & EI \end{pmatrix}. \quad (2.66)$$

#### 2.4.3. An enriched string model authorizing non planar motions

It is possible to enrich the string's model (2.48) while remaining in the general framework (2.53). It is in particular possible to take into account the so-called double polarization of the string, which amounts to authorizing non planar motions. This leads to introduce a second transverse component for the string displacement, orthogonal to the preponderant one  $u_s$ . Proceeding in the same way for the rotation of the cross sections of the string, it is natural to introduce two additional unknowns (whose meaning is given in figure 8):

- $\tilde{u}_s$  : the second (or horizontal) component of the transverse displacement of the string,
- $\tilde{\varphi}_s$  : the second (or horizontal) angle for the rotations of the cross-sections,

Doing so, we obtain a model (we do not write the equations in detail, these are straightforward extensions of (2.48) ) of the form (2.53) with :

$$N = 5, \quad \mathcal{I}_D = \{1, 2, 3\}, \quad \mathbf{q} = (u_s, \tilde{u}_s, v_s, \varphi_s, \tilde{\varphi}_s).$$

Various experimental studies show that piano strings do have horizontal movements under the “vertical” solicitation of the hammer and that taking into account the double polarization of the string may have some importance from the acoustical point of view. However, we shall not consider them in the rest of this paper. This would be relevant only if we worked with a hammer model explaining how to generate horizontal vibrations of the string and with a bridge model explaining how these vibrations are transmitted to the soundboard. This will not be the case of the “simplified” models that we shall consider (see sections 3 and 4) and this is why we shall restrict ourselves to the “planar model” of section 2.4.1.

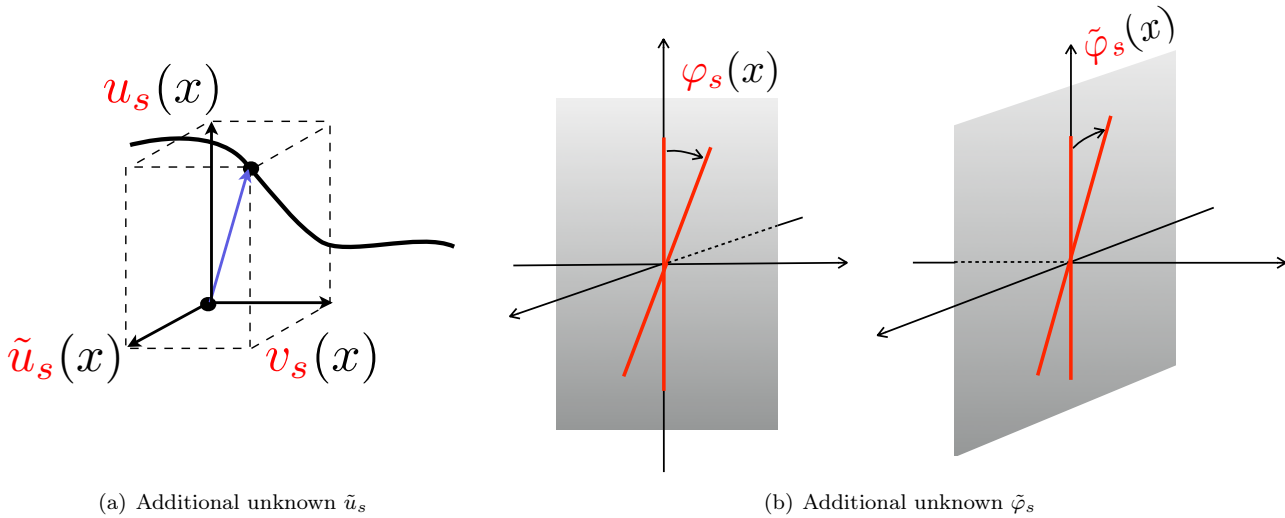


FIGURE 8. Schematic view of the additional unknowns.

## 2.5. The full nonlinear stiff string model with intrinsic damping

It seems essential to incorporate a frequency dependent damping in our strings' model. Damping phenomena are difficult to apprehend, for many reasons (lack of measurements, uneasy dissociation of their origins, misunderstanding of certain phenomena as dislocation. . .). This is why we propose as a first approach to use a very simple model that allows to reproduce these effects without trying to model the underlying physics. We have chosen to mimic the introduction of damping terms in d'Alembert's equation (2.5) by simply adding viscoelastic terms:

$$\rho A \partial_t^2 u_s + 2\rho A R_u \frac{\partial u_s}{\partial t} - 2T_0 \gamma_u \frac{\partial^3 u_s}{\partial t \partial x^2} - T_0 \partial_x^2 u_s = 0, \quad \forall x \in [0, L], \quad t > 0, \quad (2.67)$$

where  $R_u$  and  $\gamma_u$  are empirical (constant in space and positive) damping coefficients which are respectively homogeneous to a time or the inverse of a time.

By extension of (2.67), we have chosen to treat our string's model (2.48) in a similar way by adding linear viscoelastic damping terms to each row of the system:

$$\left\{ \begin{array}{l} \rho A \partial_t^2 u_s + 2\rho A R_u \partial_t u_s - 2T_0 \gamma_u \partial_x^2 \partial_t u_s \\ \quad - \partial_x \left[ EA \partial_x u_s - (EA - T_0) \frac{\partial_x u_s}{\sqrt{(\partial_x u_s)^2 + (1 + \partial_x v_s)^2}} \right] + AG\kappa \partial_x (\varphi_s - \partial_x u_s) = 0, \\ \rho A \partial_t^2 v_s + 2\rho A R_v \partial_t v_s - 2T_0 \gamma_v \partial_x^2 \partial_t v_s \\ \quad - \partial_x \left[ EA \partial_x v_s - (EA - T_0) \frac{1 + \partial_x v_s}{\sqrt{(\partial_x u_s)^2 + (1 + \partial_x v_s)^2}} \right] = 0, \\ \rho I \partial_t^2 \varphi_s + 2\rho I R_\varphi \partial_t \varphi_s - 2EI \gamma_\varphi \partial_x^2 \partial_t \varphi_s \\ \quad - \partial_x [EI \partial_x \varphi_s] + AG\kappa (\varphi_s - \partial_x u_s) = 0, \end{array} \right. \quad (2.68)$$

where  $(R_u, R_v, R_\varphi)$  and  $(\gamma_u, \gamma_v, \gamma_\varphi)$  are heuristic positive damping coefficients whose value is determined in practice thanks to experimental calibration. Again, in first approximation, this system is completed by the boundary conditions (2.7, 2.26, 2.14).

For conciseness and sake of generality (see section 2.4.3), we shall put the above model in an abstract and concise framework, using the notation of section 2.4.2 (see (2.50), (2.53)):

$$\mathbf{M} \partial_t^2 \mathbf{q} + \partial_t (\mathbf{R} \mathbf{q} - \partial_x (\mathbf{\Gamma} \partial_x \mathbf{q})) - \partial_x (\nabla_p \mathbf{H}(\partial_x \mathbf{q}, \mathbf{q})) + \nabla_q \mathbf{H}(\partial_x \mathbf{q}, \mathbf{q}) = 0 \quad (2.69)$$

where  $\mathbf{R}$  and  $\mathbf{\Gamma}$  are  $N \times N$  positive and symmetric matrices representing the damping terms. In the particular case where  $\mathbf{H}(\partial_x \mathbf{q}, \mathbf{q})$  is of the form (2.60) - (2.61), this gives

$$\mathbf{M} \partial_t^2 \mathbf{q} + \partial_t (\mathbf{R} \mathbf{q} - \partial_x (\mathbf{\Gamma} \partial_x \mathbf{q})) - \partial_x (\mathbf{A} \partial_x \mathbf{q}) - \partial_x (\mathbf{B} \mathbf{q}) + {}^t \mathbf{B} \partial_x \mathbf{q} + \mathbf{C} \mathbf{q} + \partial_x (\nabla \mathcal{U}(\partial_x \mathbf{q})) = 0 \quad (2.70)$$

According to section 2.4.2, the reader will easily check that (2.68) corresponds to the abstract form (2.70) where  $N = 3$ ,  $\mathbf{q} = (u_s, v_s, \varphi_s)$ , the matrices  $\mathbf{M}$ ,  $\mathbf{A}$ ,  $\mathbf{B}$  and  $\mathbf{C}$  are given by (2.58) and (2.63), the function  $\mathcal{U}$  is given by

(2.64), while the matrices  $\mathbf{R}$  and  $\mathbf{\Gamma}$  are the diagonal matrices

$$\mathbf{R} = 2 \begin{pmatrix} \rho A R_u & 0 & 0 \\ 0 & \rho A R_v & 0 \\ 0 & 0 & \rho I R_\varphi \end{pmatrix}, \quad \mathbf{\Gamma} = 2 \begin{pmatrix} T_0 \gamma_u & 0 & 0 \\ 0 & EA \gamma_v & 0 \\ 0 & 0 & EI \gamma_\varphi \end{pmatrix}, \quad (2.71)$$

The reader will easily check that the boundary conditions (2.7, 2.26, 2.14) correspond to the following ones for the abstract model (where  $\mathcal{I}_D = \{1, 2\}$ , see (2.51) and (2.52))

$$\mathbf{J} \mathbf{q}(x, t) = 0, \quad (\mathbf{I}d - \mathbf{J}) (\mathbf{\Gamma} \partial_{xt}^2 \mathbf{q} + \nabla_p \mathbf{H}(\partial_x \mathbf{q}, \mathbf{q}))(x, t) = 0, \quad x = 0 \text{ or } L, \quad t > 0. \quad (2.72)$$

Moreover, it is important to notice that, in the presence of damping, the (generalized) tension of the string is no longer given by (2.54) but by

$$\mathbf{T} = \mathbf{J} (\nabla_p \mathbf{H}(\partial_x \mathbf{q}, \mathbf{q}) + \mathbf{\Gamma} \partial_{xt}^2 \mathbf{q}) \quad (2.73)$$

which gives in particular, if (2.58) holds,  $\mathbf{H}$  is given by (2.59),  $\mathbf{\Gamma}$  by (2.71) and  $\mathbf{q}$  by (2.58), a vector  $(T_\tau, T_\ell, 0)$  (instead of (2.47)), where

$$\begin{cases} T_\tau = EA \partial_x u_s - (EA - T_0) \frac{\partial_x u_s}{((\partial_x u_s)^2 + (1 + \partial_x v_s)^2)^{\frac{1}{2}}} + AG\kappa (\varphi_s - \partial_x u_s) + \gamma_u T_0 \partial_{xt}^2 u_s, \\ T_\ell = EA \partial_x v_s - (EA - T_0) \frac{(1 + \partial_x v_s)}{((\partial_x u_s)^2 + (1 + \partial_x v_s)^2)^{\frac{1}{2}}} + \gamma_v T_0 \partial_{xt}^2 v_s \end{cases} \quad (2.74)$$

In this case, it is immediate to check that the energy conservation (2.55) for (2.53) is replaced by an energy decay result (that emphasizes the roles of  $\mathbf{R}$  and  $\mathbf{\Gamma}$  as damping coefficients)

$$\frac{d}{dt} \mathcal{E}_s(\mathbf{q}) + \int_0^L \mathbf{R} \dot{\mathbf{q}} \cdot \dot{\mathbf{q}} dx + \int_0^L \mathbf{\Gamma} \partial_x \dot{\mathbf{q}} \cdot \partial_x \dot{\mathbf{q}} dx = 0, \quad \mathcal{E}_s(\mathbf{q}) = \frac{1}{2} \int_0^L \mathbf{M} \dot{\mathbf{q}} \cdot \dot{\mathbf{q}} dx + \int_0^L \mathbf{H}(\partial_x \mathbf{q}, \mathbf{q}) dx, \quad (2.75)$$

where we denote  $\dot{x}$  the time derivative of any variable  $x$ .

### 3. A MATHEMATICAL MODEL THE STRINGS-HAMMERS INTERACTION.

At first glance, a piano's hammer (represented by  $H$  in what follows) can be described as a non deformable piece of wood covered by a deformable piece of felt. Each hammer will interact with one or several strings: for most notes, strings are gathered into "choirs" of one, two or three parallel strings that contribute to the same note. In what follows we shall denote  $N_s$  the number of strings. For each string, we shall use the model with planar motion of section 2.4.2. We will denote the  $i^{\text{th}}$  string's unknowns  $\mathbf{q}_i = (u_i, v_i, \varphi_i)$ ,  $1 \leq i \leq N_s$  (for simplicity of the notation, we omit the index  $s$  for the string's unknowns) and by  $x \in [0, L]$  the abscissa along each of these strings. The strings of a same choir are slightly detuned (their tension at rest,  $T_0$ , is different, see [Wei77]) and this is why, thanks to (2.63, 2.64), each string has its own  $\mathbf{U}_i$  and  $\mathbf{A}_i$  in (2.60, 2.61). Describing in detail the physics of the interaction between the hammer and the related strings (as a 3-D contact problem for instance) would lead to a too complex model. For now, we shall restrict ourselves to a (very) simplified model.

The first part of the model is the kinematic one. In first approximation, the movement of the hammer is assumed to be parallel to a line  $D$ , vertical and orthogonal to the plane containing the strings with which it interacts. For simplicity:

- the movement of the wooden part of the hammer will be described by the abscissa  $\xi(t)$  (along  $D$ ) of a fixed point  $M_H$  in this wooden part (see figure 9(a)),

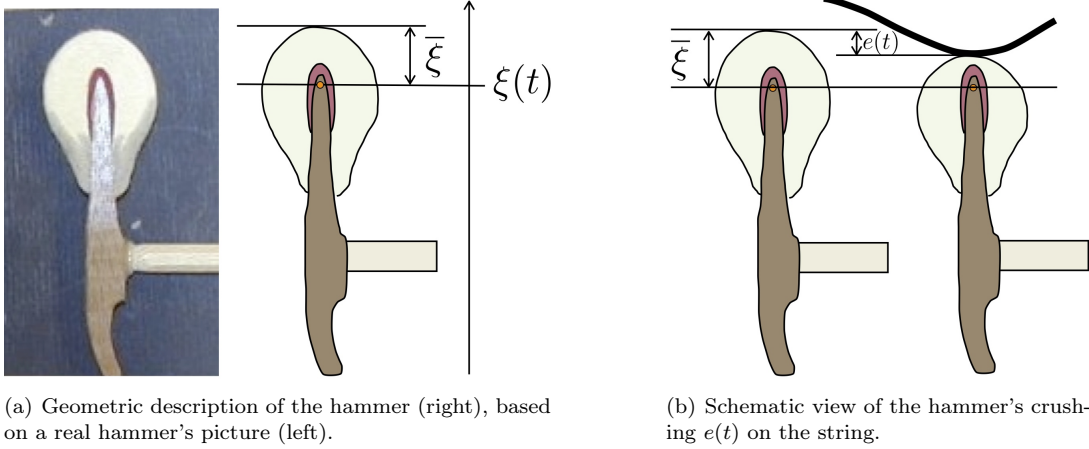


FIGURE 9. Schematic description of the hammer.

- the deformation of the felt will be described by the abscissa along  $D$ ,  $\xi_i(t)$ , of the point of impact between the hammer and the  $i^{\text{th}}$  string of the choir (which is also assumed to move along a line parallel to  $D$ , that we assume to be oriented in such a way that  $\xi(t) < \xi_i(t)$ )
- the above impact point is assumed to coincide with a point of abscissa  $x_i$  along the string (we suppose that it does not depend on time : there is no slipping) so that

$$\xi_i(t) = u_i(x_i, t) \quad (3.1)$$

If one wants to take into account that the string-hammer contact is not purely punctual but distributed along a small portion of string around the point  $x_i$  (doing so, we implicitly assume that the zone of impact does not change in time, which is also a simplification)

$$\xi_i(t) = \int_0^L u_i(x, t) \delta_H(x - x_i) dx \quad (3.2)$$

where  $\delta_H(x)$  is a function with small support around the origin and satisfying  $\int \delta_H(x) = 1$ .

To be more precise, if  $\bar{\xi} > 0$  denotes the distance between  $M_H$  and the top of the hammer when this one is at rest (see figure 9(a))

$$\text{there is contact with the } i^{\text{th}} \text{ string} \iff \xi_i(t) - \xi(t) < \bar{\xi} \quad (3.3)$$

Moreover we shall define the crushing (see figure 9(b)) of the hammer at point  $x_i$  by

$$e_i(t) = [\bar{\xi} - \xi_i(t) + \xi(t)]^+ \quad (3.4)$$

where  $x^+$  is the positive part of  $x$ . In particular  $e_i(t) = 0$  when there is no contact.

The second part of the model consists in describing the interacting forces between the hammer and the strings. More precisely, we assume that the action of the hammer on the  $i^{\text{th}}$  string is reduced to a force, applied at

the impact point  $x_i$  (or more specifically distributed along a small portion of string around  $x_i$ , see later). We suppose that this force is orthogonal to the string and thus described by a scalar function  $F_i(t)$ . When the relaxation phenomena are neglected (see below), the intensity of this force is assumed to be a function of the crushing

$$F_i(t) = k_H \Phi_H(e_i(t)) \quad (3.5)$$

where  $k_H > 0$  is the nonlinear stiffness of the hammer (see [Stu95]) and  $\Phi_H : \mathbb{R} \rightarrow \mathbb{R}^+$  is increasing and satisfies  $\Phi_H(0) = 0$ , so that, by construction

- when there is no contact ( $e_i(t) = 0$ ), this force vanishes,
- when there is contact, the more compressed the hammer is, the more intense the force is.

The reader will remark that the discrimination between  $k_H$  and  $\Phi_H$  will only make sense when we shall have chosen an explicit expression for  $\Phi_H$ , see (3.7). For a more realistic modeling, one should take into account the relaxation phenomenon that expresses that the force of interaction is not the same depending on the fact that the hammer is being compressed, in which case the force is more intense, or decompressed, in which case it is less intense. Mathematically, this can be translated into the addition to (3.5) of a term which is proportional to the time derivative of  $\Phi_H(e_i(t))$ :

$$F_i(t) = k_H \Phi_H(e_i(t)) + r_H \frac{d}{dt} \Phi_H(e_i(t)) \quad (3.6)$$

where  $r_H \geq 0$  is the relaxation coefficient. The model (3.6) allows to account for the hysteretic behavior of the hammer observed in experimental studies as [Stu95] and is also responsible, as we shall see, for dissipation phenomena. The same studies also show that it is relevant, for small crushing values, to take a simple form for the function  $\Phi_H$ :

$$\Phi_H(y) = y^p \quad (3.7)$$

where the exponent  $p$ , that depends on the considered hammer, is not necessarily an integer and in practice varies between 1.5 and 3.5 in order to fit the experimental behavior.

In conclusion, introducing the vector  $\boldsymbol{\nu}^s = (1, 0, 0)^t$  as an element of the  $\mathbf{q}$  space  $\mathbb{R}^N$ , so that  $u_i = \mathbf{q}_i \cdot \boldsymbol{\nu}^s$ , the evolution of the hammer-strings system will be modeled by the following set of equations

$$\left\{ \begin{array}{l} \text{Find } \xi(t) : \mathbb{R}^+ \longrightarrow \mathbb{R} \text{ and } \mathbf{q}_i(t) : [0, L] \times \mathbb{R}^+ \longrightarrow \mathbb{R}^N, 1 \leq i \leq N_s \text{ such that} \\ m_H \frac{d^2 \xi}{dt^2}(t) = - \sum_{i \in \mathcal{I}_s} F_i(t), \quad F_i(t) = k_H \Phi_H(e_i(t)) + r_H \frac{d}{dt} \Phi_H(e_i(t)), \\ e_i(t) = [\bar{\xi} - \xi_i(t) + \xi(t)]^+, \quad \xi_i(t) = \int_0^L \mathbf{q}_i(x, t) \cdot \boldsymbol{\nu}^s \delta_H(x - x_i) dx, \\ \mathbf{M} \partial_t^2 \mathbf{q}_i + \partial_t (\mathbf{R} \mathbf{q}_i - \partial_x (\boldsymbol{\Gamma} \partial_x \mathbf{q}_i)) - \partial_x (\nabla_p \mathbf{H}_i(\partial_x \mathbf{q}_i, \mathbf{q}_i)) + \nabla_q \mathbf{H}_i(\partial_x \mathbf{q}_i, \mathbf{q}_i) = F_i(t) \delta_H(x - x_i) \boldsymbol{\nu}^s \end{array} \right. \quad (3.8)$$

where the last equation holds for each  $1 \leq i \leq N_s$ . The above system is completed by the boundary conditions (2.72) for each  $\mathbf{q}_i$  and by the initial conditions:

$$\left\{ \begin{array}{l} \xi(0) = -\bar{\xi}, \quad \frac{d\xi}{dt}(0) = v_H, \\ \mathbf{q}_i(x, 0) = \frac{\partial \mathbf{q}_i}{\partial t}(x, 0) = 0, \quad x \in [0, L], \end{array} \right. \quad (3.9)$$

which express that the string is initially at rest and that, at time  $t = 0$ , the hammer strikes the strings from below with an initial velocity  $v_H$ . In (3.8), we shall clarify that

- $\Phi_H$  is given by (3.7),  $m_H > 0$  is the effective mass of the hammer,  $k_H$  and  $r_H$  its stiffness and relaxation coefficients, the functions  $\mathbf{H}_i(\mathbf{p}, \mathbf{q})$  are defined as in section 2.4.2 (through (2.59) or equivalently (2.59, 2.63, 2.64)) and the the matrices  $(\mathbf{M}, \mathbf{R}, \mathbf{\Gamma})$  as in section 2.5, except for the apparition of the index  $i$ , devoted to express the dependence with respect to the string, of the various coefficients of the string model, especially the initial tension.
- the presence of the function  $\delta_H$ , in the right hand side of the last equation, allows to represent the spatial distribution of the force exerted by the hammer. For energy conservation reasons, this has to be the same function as the one in the definition (3.2) of  $\xi_i(t)$ . The presence of the vector  $\boldsymbol{\nu}^s = (1, 0, 0)^t$  (as an element of  $\mathbb{R}^N$ , the space of  $\mathbf{q}$  unknowns) means that the direction of the force is along the line  $D$ , which implies that the right hand side only impacts the equation for  $u_i$ .

The above model is associated to an energy decay result. More precisely, the energy of the strings-hammer system is defined by

$$\begin{aligned} \mathcal{E}_{s,h}(\mathbf{q}_i, \xi) &= \sum_i \mathcal{E}_s(\mathbf{q}_i) + \frac{m_H}{2} |\dot{\xi}|^2 + \sum_i k_H \Psi_H(e_i), \\ e_i(t) &= [\bar{\xi} - \xi_i(t) + \xi(t)]^+, \quad \xi_i(t) = \int_0^L \mathbf{q}_i(x, t) \cdot \boldsymbol{\nu}^s \delta_H(x - x_i) dx \end{aligned} \quad (3.10)$$

where the function  $\Psi_H$  is defined by

$$\Psi_H(x) = \int_0^x \Phi_H(y) dy \quad (\geq 0). \quad (3.11)$$

In (3.10), in addition to the strings' energies (the first term), one identifies the kinetic energy of the hammer (the second term) and the energy of interaction between the strings and the hammer (the last term). It is easy to establish the following energy identity satisfied by any (smooth enough) solution of (3.8),

$$\frac{d}{dt} \mathcal{E}_{s,h}(\mathbf{q}_i, \xi) = - \sum_i \int_0^L \mathbf{R} \dot{\mathbf{q}}_i \cdot \dot{\mathbf{q}}_i - \sum_i \int_0^L \mathbf{\Gamma} \partial_x \dot{\mathbf{q}}_i \cdot \partial_x \dot{\mathbf{q}}_i - \sum_i r_H \Phi'_H(e_i) [\partial_t e_i]^2 \quad (3.12)$$

Note that, since  $\Phi_H$  is increasing, (3.12) illustrates the role of the relaxation term in (3.6) as a dissipation term.

## 4. A MATHEMATICAL MODEL FOR THE SOUNDBOARD - STRINGS INTERACTION.

### 4.1. The mathematical model for the soundboard

#### 4.1.1. The Reissner-Mindlin model

The soundboard's thickness being very small compared to the other two dimensions, we have chosen to model this structure as a plate (the index  $p$  in what follows will refer to "plate") on a bidimensional domain  $\omega$ . We shall denote  $\mathbf{x} = (x_1, x_2) \in \mathbb{R}^2$  the space variable on  $\omega$  (and  $z$  the third "vertical coordinate" according to figure 10). Seen as a 3D object,  $\omega$  is in the plane  $z = 0$ . In the piano context, it is reasonable to consider only small displacements and small deformations. We use a standard linearized model, the Reissner-Mindlin model [Rei45] which can be seen as a 2D version of the Timoshenko model (2.9) for stiff strings. The unknowns of the model are (see also figure 10)



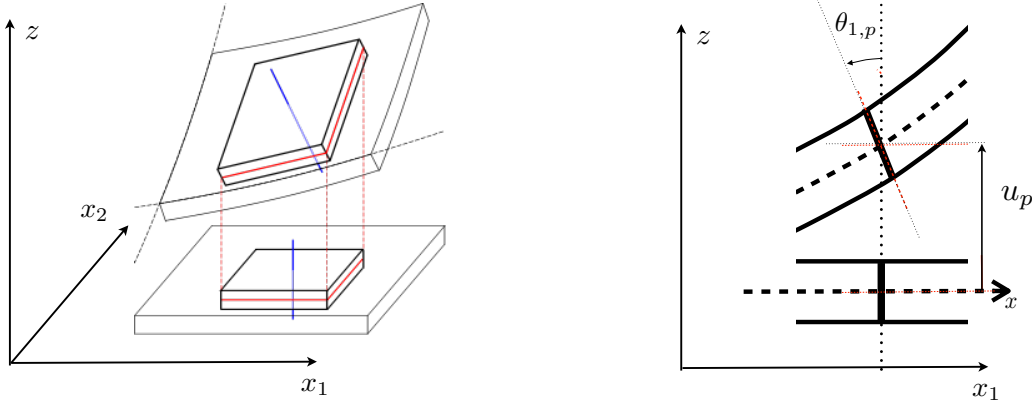


FIGURE 10. Schematic view of the soundboard's unknowns and geometry.

- the transverse displacement  $u_p$  of the plate,
- the two deflection angles  $(\theta_{1,p}, \theta_{2,p}) = \theta_p$  representing the rotations of the normal fibers of the plate.

The coefficients appearing in the model are

- the thickness  $\delta > 0$  the plate, its density  $\rho > 0$ ,
- the elasticity coefficients : the shear and stiffness tensor  $\mathbf{G}$  and  $\mathbf{C}$  ( $2 \times 2$  positive definite symmetric matrices, diagonalizable in the same basis)
- a shear correction coefficient of the model denoted  $\underline{\kappa}^2 > 0$

The tensor  $\mathbf{C}$  permits to take into account the orthotropy of the wood. The thickness will be taken as a function of  $\mathbf{x}$ , which allows to take into account the diaphragmatic nature of the soundboard (the fact that the thickness of the plate varies slowly and smoothly, from 6 cm in the middle to 9 cm at the boundaries, [Con96]) but also the presence of the bridge and the ribs, seen on figure 11. The other coefficients will also be varying with  $\mathbf{x}$ , allowing any possible heterogeneity of the materials. If the plate is submitted to a surfacic density  $f(\mathbf{x}, t)$  of transverse forces, the governing equations are the following:

$$\begin{cases} \rho(\mathbf{x}) \delta(\mathbf{x}) \partial_t^2 u_p - \operatorname{div}(\delta(\mathbf{x}) \underline{\kappa}(\mathbf{x})^2 \mathbf{G}(\mathbf{x}) (\nabla u_p + \theta_p)) = f(\mathbf{x}, t), \\ \rho(\mathbf{x}) \frac{\delta(\mathbf{x})^3}{12} \partial_t^2 \theta_p - \operatorname{Div}\left(\frac{\delta^3(\mathbf{x})}{12} \mathbf{C}(\mathbf{x}) \varepsilon(\theta_p)\right) + \delta(\mathbf{x}) \underline{\kappa}^2(\mathbf{x}) \mathbf{G}(\mathbf{x}) (\nabla u_p + \theta_p) = 0 \end{cases} \quad \text{in } \omega \quad (4.1)$$

where we have used the following notation

- $\operatorname{Div} \sigma$  denotes the (vectorial) divergence of a 2D tensor field  $\sigma$ :

$$(\operatorname{Div} \sigma)_i = \sum_{j=1}^2 \partial_{x_j} \sigma_{ij}, \quad i = 1, 2$$

- $\nabla \theta$  (resp.  $\varepsilon(\theta)$ ) is the tensor corresponding to the gradient (resp. its symmetric part) of a 2D vector field  $\theta$  :

$$(\nabla \theta)_{ij} = \partial_{x_j} \theta_j, \quad i, j = 1, 2, \quad \varepsilon(\theta) = \frac{1}{2} \left( \nabla \theta + (\nabla \theta)^t \right)$$

Of course, (4.1) has to be completed by boundary conditions. Roughly speaking, the plate  $\omega$  is “fixed” along its boundary  $\partial\omega$ . However, the optimal boundary conditions are very difficult to estimate in realistic configurations. We have considered ideal simply supported conditions, namely ( $n$  denotes the unit normal vector to  $\partial\omega$ ):

$$u_p(\mathbf{x}) = 0, \quad \underline{\nabla}\theta_p(\mathbf{x})n = 0, \quad \forall \mathbf{x} \in \partial\omega. \quad (4.2)$$

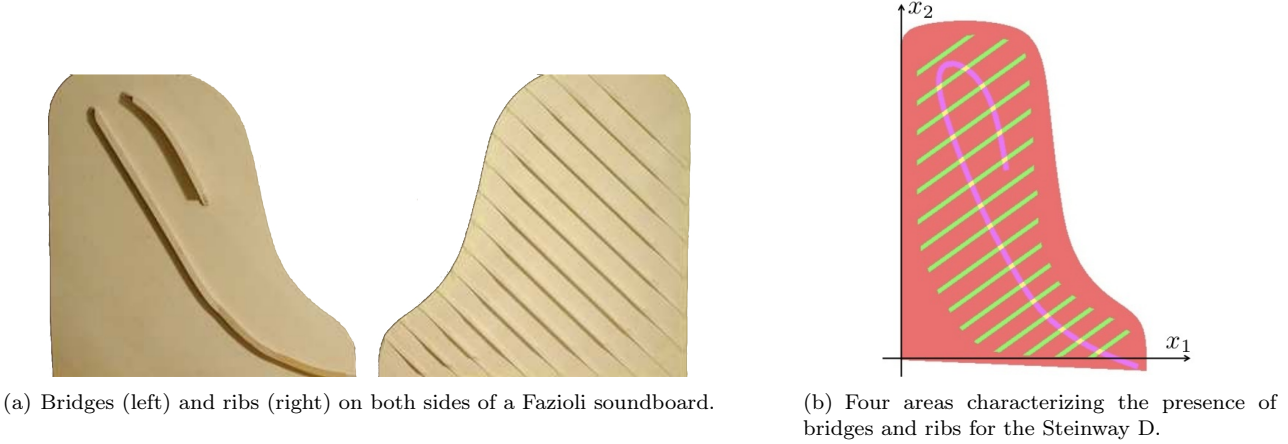


FIGURE 11. Bridges and ribs on soundboards.

**Remark 5.** *By anticipation, let us make precise that, in the full piano model, the transverse force  $f$  appearing at the right hand side of (4.1) will be the sum of two contributions  $f = f_s + f_a$ :*

- $f_s$  : the force applied by the strings at the bridge (see section 4.2),
- $f_a$  ; the force (pressure jump) applied by the outside air (see section 5).

#### 4.1.2. The soundboard model in condensed form

In order to rewrite (4.1), (4.2), it is useful to introduce the vector of plate unknowns

$$\mathbf{U}_p = (u_p, \theta_p)^t \in \mathbb{R}^M, \quad M = 3, \quad (4.3)$$

the diagonal matrix

$$\mathbf{M}_p(\mathbf{x}) = \begin{pmatrix} \rho(\mathbf{x})\delta(\mathbf{x}) & 0 & 0 \\ 0 & \rho(\mathbf{x})\delta(\mathbf{x})^3/12 & 0 \\ 0 & 0 & \rho(\mathbf{x})\delta(\mathbf{x})^3/12 \end{pmatrix} \quad (4.4)$$

the differential operator

$$\mathbf{A}_p(\mathbf{x}, \nabla_{\mathbf{x}})\mathbf{U}_p = \mathbf{A}_p(\mathbf{x}, \nabla_{\mathbf{x}}) \begin{pmatrix} u_p \\ \theta_p \end{pmatrix} = \begin{pmatrix} -\operatorname{div}(\delta(\mathbf{x})\kappa(\mathbf{x})^2\mathbf{G}(\mathbf{x})(\underline{\nabla}u_p + \theta_p)) \\ -\operatorname{Div}\left(\frac{\delta^3(\mathbf{x})}{12}\mathbf{C}(\mathbf{x})\varepsilon(\theta_p)\right) + \delta(\mathbf{x})\kappa^2(\mathbf{x})\mathbf{G}(\mathbf{x})(\underline{\nabla}u_p + \theta_p) \end{pmatrix} \quad (4.5)$$

and the trace operator

$$\mathbf{B}_p(n, \nabla_{\mathbf{x}})\mathbf{U}_p = \mathbf{B}_p(n, \nabla_{\mathbf{x}}) \begin{pmatrix} u_p \\ \theta_p \end{pmatrix} = \begin{pmatrix} u_p \\ \nabla \theta_p n \end{pmatrix}. \quad (4.6)$$

Then, denoting  $\boldsymbol{\nu}^p = (1, 0, 0)^t \in \mathbb{R}^M$  (the space for the  $\mathbf{U}_p$  unknown), (4.1) becomes

$$\begin{cases} \mathbf{M}_p(\mathbf{x}) \partial_t^2 \mathbf{U}_p + \mathbf{A}_p(\mathbf{x}, \nabla_{\mathbf{x}})\mathbf{U}_p = f \boldsymbol{\nu}^p, & \mathbf{x} \in \omega, \quad t > 0, \\ \mathbf{B}_p(n, \nabla_{\mathbf{x}})\mathbf{U}_p = 0, & \mathbf{x} \in \partial\omega, \quad t > 0. \end{cases} \quad (4.7)$$

Again, there is a natural energy identity satisfied by any regular solution of (4.1), (4.2). More precisely, if we introduce the energy of the soundboard as

$$\mathcal{E}_p(\mathbf{U}_p) = \frac{1}{2} \int_{\omega} \rho \delta |\partial_t u_p|^2 + \frac{1}{2} \int_{\omega} \rho \frac{\delta^3}{12} |\partial_t \theta_p|^2 + \frac{1}{2} \int_{\omega} \frac{\delta^3}{12} \mathbf{C} \underline{\varepsilon}(\theta_p) : \underline{\varepsilon}(\theta_p) + \frac{1}{2} \int_{\omega} \delta \underline{\kappa}^2 \cdot \mathbf{G} |\nabla u_p + \theta_p|^2 \quad (4.8)$$

then, one has the identity

$$\frac{d}{dt} \mathcal{E}_p(\mathbf{U}_p) = \int_{\omega} f \frac{\partial \mathbf{U}_p}{\partial t} \cdot \boldsymbol{\nu}^p \quad (\equiv \int_{\omega} f \frac{\partial u_p}{\partial t}). \quad (4.9)$$

#### 4.1.3. Introducing intrinsic plate damping

As it was also the case for the string, there are intrinsic mechanisms, of various natures, that provoke damping phenomena, that is to say natural attenuation in time of plate vibrations. Describing in detail the physics of these mechanisms is a very complicated task that goes much beyond the objective of this work. This is why, as for the string, we have chosen to use a more heuristic and phenomenological model. A full thesis [Ege10] has been recently devoted to the physics of soundboards and we shall use the results therein to design our damping model. In two short sentences, the conclusions of [Ege10] are:

- (i) The soundboard damping is a linear phenomenon of modal nature,
- (ii) The attenuation increases with the frequency of the modes.

Mathematically, it is useful to reconsider the model (4.7) in the form of an harmonic oscillator (2.1) in the sense of the beginning of section 2 ( see (2.1)):

$$\frac{d^2 \mathbf{U}_p}{dt^2} + \mathcal{A}_p \mathbf{U}_p = 0, \quad (4.10)$$

The Hilbert space  $\mathcal{H}$  is  $\mathcal{H} = \mathcal{H}_p = L^2(\omega)^M$  equipped with the scalar product:

$$(\mathbf{U}_p, \tilde{\mathbf{U}}_p)_{\mathcal{H}} = \int \mathbf{M}_p(\mathbf{x}) \mathbf{U}_p(\mathbf{x}) \cdot \tilde{\mathbf{U}}_p(\mathbf{x}) \, d\mathbf{x} \quad (4.11)$$

and  $\mathcal{A}_p \mathbf{U}_p = \mathbf{M}_p(\mathbf{x})^{-1} \mathbf{A}_p(\mathbf{x}, \nabla_{\mathbf{x}})\mathbf{U}_p$  for any  $\mathbf{U}_p \in D(\mathcal{A}_p)$  where the domain of  $\mathcal{A}_p$  is

$$D(\mathcal{A}_p) = \{\mathbf{U}_p \in H^1(\omega)^M / \mathbf{A}_p(\mathbf{x}, \nabla_{\mathbf{x}})\mathbf{U}_p \in L^2(\omega)^M, \mathbf{B}_p(n, \nabla_{\mathbf{x}})\mathbf{U}_p = 0 \text{ on } \partial\omega\} \quad (4.12)$$

The eigenmodes  $\{\mathbf{W}_n : \omega \rightarrow \mathbb{R}^M, n \in \mathbb{N}\}$  and corresponding eigenvalues  $\{\lambda_n \geq 0, n \in \mathbb{N}\}$  (which are ranked by increasing values and tend to  $+\infty$ ) of this harmonic oscillator are the solutions of the eigenvalue problem

$$\begin{cases} \mathbf{A}_p(\mathbf{x}, \nabla_{\mathbf{x}})\mathbf{W}_n = \lambda_n \mathbf{M}_p(\mathbf{x}) \mathbf{W}_n, & \mathbf{x} \in \omega, \\ \mathbf{B}_p(n, \nabla_{\mathbf{x}})\mathbf{W}_n = 0, & \mathbf{x} \in \partial\omega. \end{cases} \quad (4.13)$$

After appropriate normalization,  $\{\mathbf{W}_n, n \in \mathbb{N}\}$  form an orthonormal basis of the Hilbert space  $\mathcal{H}$ . In order to introduce some dissipation in the model, while taking account of the observations (i) and (ii), we modify (4.10) in the following way:

$$\frac{d^2 \mathbf{U}_p}{dt^2} + f_d(\mathcal{A}_p) \frac{d \mathbf{U}_p}{dt} + \mathcal{A}_p \mathbf{U}_p = 0, \quad (4.14)$$

where  $f_d : \mathbb{R}^+ \rightarrow \mathbb{R}^+$  is the spectral *damping function* which is assumed to be *increasing* and have a *sub linear growth* at infinity:

$$f_d(\lambda) \leq A \lambda + B, \quad \text{for some } A, B > 0. \quad (4.15)$$

The operator  $f_d(\mathcal{A}_p)$  is defined in the usual sense of the functional calculus for self-adjoint operator, namely:

$$\forall n \in \mathbb{N}, \quad f_d(\mathcal{A}_p) \mathbf{W}_n = f_d(\lambda_n) \mathbf{W}_n. \quad (4.16)$$

Note that (4.15) ensures that  $f_d(\mathcal{A}_p)$  is well defined in  $D(\mathcal{A}_p)$  and that the bilinear form

$$a_d^p(\mathbf{U}_p, \tilde{\mathbf{U}}_p) = \left( f_d(\mathcal{A}_p) \mathbf{U}_p, \tilde{\mathbf{U}}_p \right)_{\mathcal{H}} \equiv \sum_n f_d(\lambda_n) (\mathbf{U}_p, \mathbf{W}_n)_{\mathcal{H}} \overline{(\tilde{\mathbf{U}}_p, \mathbf{W}_n)_{\mathcal{H}}} \quad (4.17)$$

is well defined in  $\mathcal{V}_p = H^1(\omega)^3$  while the positivity of  $f_d$  yields the positivity of the associated quadratic form

$$\forall \mathbf{U}_p \in H^1(\omega)^3, \quad a_d^p(\mathbf{U}_p, \mathbf{U}_p) \geq 0, \quad (4.18)$$

which guarantees the dissipative nature of the additional term in (4.14). Indeed, the energy identity (4.9) becomes

$$\frac{d}{dt} \mathcal{E}_p(\mathbf{U}_p) + a_d^p(\partial_t \mathbf{U}_p, \partial_t \mathbf{U}_p) = \int_{\omega} f \frac{\partial u_p}{\partial t}. \quad (4.19)$$

In practice, looking at (4.16), knowing the  $\{f_d(\lambda_n), n \in \mathbb{N}\}$  is sufficient, which could be done by matching experimental data. However, it is convenient to use an analytic formula. The following formula is proposed to match experimental data of [Ege10] for low and medium frequencies, and adds a degree of freedom  $\alpha_d$  with respect to [Ege10] in order to adjust the high frequency behavior:

$$f_d(\lambda) = \alpha_d \lambda + \beta_d \sqrt{\lambda} + \gamma_d, \quad (\alpha, \beta, \gamma) \geq 0 \quad (4.20)$$

The reader will note that, as soon as  $\beta_d \neq 0$ ,  $f_d(\mathcal{A}_p)$  cannot be “identified” to a differential operator and is thus “truly” nonlocal.

Because of this property, it is not easy to rewrite (4.14) in PDE form. To do so, a solution consists in extending the operator  $f(\mathcal{A}_p)$  to distributions on  $\omega$  by duality : for any  $\mathbf{U}_p \in \mathcal{D}'(\omega)^3$ , we define  $f(\mathcal{A}_p) \mathbf{U}_p \in \mathcal{D}'(\omega)^3$  by

$$\forall \tilde{\mathbf{U}}_p \in \mathcal{D}(\omega)^3, \quad \langle f(\mathcal{A}_p) \mathbf{U}_p, \tilde{\mathbf{U}}_p \rangle = \langle \mathbf{U}_p, f_d(\mathcal{A}_p) \tilde{\mathbf{U}}_p \rangle \quad (4.21)$$

which makes sense because  $\mathcal{D}(\omega)^3 \subset D(\mathcal{A}_p)$  and is justified by the self-adjoint nature of  $\mathcal{A}_p$ . Modulo this extension, the plate model with dissipation can be rewritten as:

$$\begin{cases} \mathbf{M}_p(\mathbf{x}) \partial_t^2 \mathbf{U}_p + f(\mathcal{A}_p) \partial_t \mathbf{U}_p + \mathbf{A}_p(\mathbf{x}, \nabla_{\mathbf{x}}) \mathbf{U}_p = f \boldsymbol{\nu}^p, & \mathbf{x} \in \omega, \quad t > 0, \\ \mathbf{B}_p(n, \nabla_{\mathbf{x}}) \mathbf{U}_p = 0, & \mathbf{x} \in \partial\omega, \quad t > 0. \end{cases} \quad (4.22)$$

**Remark 6.** For numerical purpose, the dissipation will easily be introduced in the weak formulation (or variational formulation) in space of (4.14), via the bilinear form  $a_d^p$ . Taking into account (4.17), this will lead us to use a spectral (or modal) approach for the space discretization of (4.14) : we shall work in a space spanned by  $\{\mathbf{W}_n, n \leq N_p\}$  where  $N_p$  is devoted to tend to  $+\infty$ .

## 4.2. A model for the string-soundboard coupling at the bridge

We shall propose in this section a quite simplified model for the string-soundboard interaction via the bridge. We think that this model is a good starting point to explain the main mechanism of the transmission of string's vibrations to the soundboard.

We shall make the assumptions that the motion of each string, and consequently the one of the attach point at the bridge, remains in the vertical plane containing the string's motion. As a consequence, it is sufficient to give a description of the coupling in a 2D setting. In figure 12, we give a schematic view of the important geometric objects in this plane, denoted  $(\mathcal{P})$ .

- The segment  $D_p$  is the intersection of the soundboard  $\omega$  with the plane  $(\mathcal{P})$  :  $D_p = \omega \cap (\mathcal{P})$ ,
- The segment line  $D$  represents the string at rest. Note that  $D_p$  and  $D$  are not parallel : there is a small angle  $\alpha$  between them. This particularity (which is more visible on a violin, for instance, but is also present in a piano) allows the transmission of the longitudinal vibrations of the string to the soundboard.
- The extremity corresponding to the abscissa  $x = 0$  (agraffe) is fixed. The one corresponding to  $x = L$  (bridge) is mobile.
- At the bridge extremity ( $x = L$ ), we suppose a condition of zero torque, which is written as (2.72) in the generalized notations.
- The bridge, assimilated to the (vertical) segment  $\Sigma$ , joins the point  $\mathbf{x}_a \in \omega$  of the soundboard (that we shall abusively call the “attach point”) to the mobile extremity of the string (the real attach point).
- The bridge is assumed to be perfectly rigid (undeformable) and its movement purely vertical along the direction of  $\Sigma$  (as pointed out with the blue arrow on figure 12).

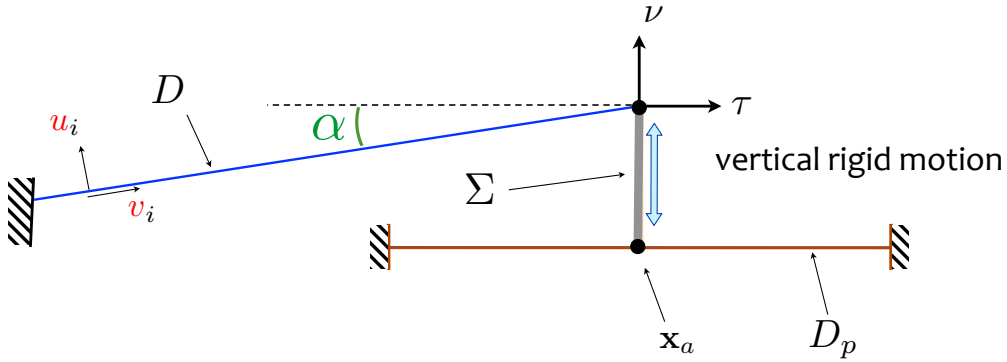


FIGURE 12. Schematic description of the bridge (in the plane  $(\mathcal{P})$ )

In the following, we shall work with the space coordinates  $(x_1, x_2, z)$  of  $\mathbb{R}^3$  chosen in such a way that  $\omega$  is parallel to the “horizontal” plane  $(x_1, x_2)$ , the line  $D_p$  is parallel to  $x_2$  axis and  $D$  is parallel to the vertical plane  $(x_2, z)$ .

The above assumptions lead to the following kinematic boundary conditions which express that the movement of the string's mobile extremity has no horizontal component, while the vertical one coincides with the one of

the attach point  $\mathbf{x}_a$ :

$$\begin{cases} u_i(L, t) \sin \alpha - v_i(L, t) \cos \alpha = 0 \\ u_i(L, t) \cos \alpha + v_i(L, t) \sin \alpha = u_p(\mathbf{x}_a, t) \end{cases} \quad (4.23)$$

The efforts between the two systems string and bridge-soundboard are explained on figure 13, in which the red curve represents the deformed string at a given instant  $t$ . More precisely

- The  $i^{\text{th}}$  string acts on the soundboard through the string's tension at its extremity  $\mathbf{T}^i(L, t)$ ,
- The horizontal component of this tension is annihilated by a force of reaction  $F_r^i(t)$  due to the bridge that ensures that the motion of the bridge remains vertical,
- The vertical component of this tension, due to the rigidity of the bridge, is entirely transmitted to the soundboard as a vertical force  $F_p^i(t)$  applied at point  $\mathbf{x}_a$ .

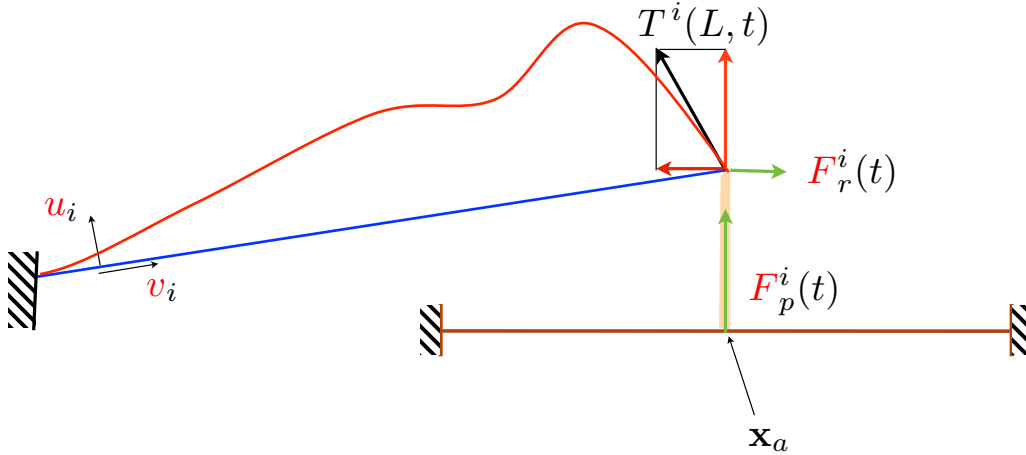


FIGURE 13. The forces between the two systems.

The consequence is the apparition of a right hand side  $f_s = f_s^i$  (a point source), for the equation in  $u_p$  in the soundboard model (see section 4.1 and more precisely (4.1) and remark 5), :

$$f_s^i(\mathbf{x}, t) = \sum_i F_p^i(t) \delta(\mathbf{x} - \mathbf{x}_a), \quad F_p^i(t) = \cos \alpha T_\tau^i(L, t) + \sin \alpha T_\ell^i(L, t) \quad (4.24)$$

where we recall that  $T_\tau^i$  and  $T_\ell^i$  are the components of the string's tension in the string's referential, given by (2.47). To take into account the fact the bridge is not a 1D object, we shall assume that the force  $f_s$  is not applied only at a point but distributed on a small portion of the soundboard  $\omega$ . For this we introduce a positive averaging function  $\chi(\mathbf{x}) : \mathbb{R}^2 \rightarrow \mathbb{R}^+$  which has a small support (a neighborhood of the origin) and satisfies  $\int \chi(\mathbf{x}) d\mathbf{x} = 1$ . This means that (4.24) is replaced by

$$f_s^i(\mathbf{x}, t) = F_p^i(t) \chi(\mathbf{x} - \mathbf{x}_a), \quad F_p^i(t) = \cos \alpha T_\tau^i(L, t) + \sin \alpha T_\ell^i(L, t) \quad (4.25)$$

As a consequence, in the purpose of energy conservation, the kinematic conditions (4.23) have to be modified accordingly. More precisely, the vertical displacement of the mobile extremity of the string will be identified to

a mean value of the vertical displacement of the plate  $\omega$ , using the weight function  $\chi$ :

$$\begin{cases} u_i(L, t) \sin \alpha - v_i(L, t) \cos \alpha = 0 \\ u_i(L, t) \cos \alpha + v_i(L, t) \sin \alpha = \int_{\omega} u_p(\mathbf{x}, t) \chi(\mathbf{x} - \mathbf{x}_a) d\mathbf{x} \end{cases} \quad (4.26)$$

In order to rewrite (4.23) and (4.25) in a more condensed and abstract form, using the general notation of sections 2.4.2 and 4.1.2, it is useful to introduce the vectors in the space of  $\mathbf{q}$ -unknowns, which are closely related to the vectors  $\tau$  and  $\nu$  of the physical space, illustrated in figure 12:

$$\boldsymbol{\tau}_{\alpha}^s = (-\sin \alpha, \cos \alpha, 0)^t \in \mathbb{R}^N, \quad \boldsymbol{\nu}_{\alpha}^s = (\cos \alpha, \sin \alpha, 0)^t \in \mathbb{R}^N, \quad (\text{note that } \boldsymbol{\nu}_{\alpha}^s = \boldsymbol{\nu}^s \text{ when } \alpha = 0) \quad (4.27)$$

in such a way that

$$\begin{aligned} F_p^i(t) &\equiv (\nabla_q \mathbf{H}_i(\partial_x \mathbf{q}_i, \mathbf{q}_i) + \boldsymbol{\Gamma} \partial_x \mathbf{q}_i) \cdot \boldsymbol{\tau}_{\alpha}^s \\ -u_i(L, t) \sin \alpha + v_i(L, t) \cos \alpha &\equiv \mathbf{q}_i(L, t) \cdot \boldsymbol{\tau}_{\alpha}^s, \quad u_i(L, t) \cos \alpha + v_i(L, t) \sin \alpha \equiv \mathbf{q}_i(L, t) \cdot \boldsymbol{\nu}_{\alpha}^s \end{aligned} \quad (4.28)$$

Then, the equations for the coupled strings-soundboard model can be rewritten as (we recall that  $\boldsymbol{\nu}^p = (1, 0, 0)^t \in \mathbb{R}^M$ , see section 4.1.2):

$$\left\{ \begin{array}{l} \text{Find } \mathbf{q}_i(t) : [0, L] \times \mathbb{R}^+ \longrightarrow \mathbb{R}^N \text{ and } \mathbf{U}_p : \omega \times \mathbb{R}^+ \longrightarrow \mathbb{R}^M, \quad (N = 3, M = 3), \text{ such that} \\ \mathbf{M} \partial_t^2 \mathbf{q}_i + \partial_t (\mathbf{R} \mathbf{q}_i - \partial_x (\boldsymbol{\Gamma} \partial_x \mathbf{q}_i)) - \partial_x (\nabla_p \mathbf{H}_i(\partial_x \mathbf{q}_i, \mathbf{q}_i)) + \nabla_q \mathbf{H}_i(\partial_x \mathbf{q}_i, \mathbf{q}_i) = F_i(t) \delta_H(x) \boldsymbol{\nu}^s \\ \mathbf{M}_p \partial_t^2 \mathbf{U}_p + f(\mathcal{A}_p) \partial_t \mathbf{U}_p + \mathbf{A}_p (\nabla_{\mathbf{x}}) \mathbf{U}_p = \chi(\mathbf{x} - \mathbf{x}_a) \left( \sum_i (\nabla_q \mathbf{H}_i(\partial_x \mathbf{q}_i, \mathbf{q}_i) + \boldsymbol{\Gamma} \partial_x \mathbf{q}_i) \cdot \boldsymbol{\tau}_{\alpha}^s \right) \boldsymbol{\nu}^p \\ \mathbf{q}_i(L, t) \cdot \boldsymbol{\tau}_{\alpha}^s = 0, \quad \mathbf{q}_i(L, t) \cdot \boldsymbol{\nu}_{\alpha}^s = \int_{\omega} \chi(\mathbf{x} - \mathbf{x}_a) \mathbf{U}_p(\mathbf{x}, t) \cdot \boldsymbol{\nu}^p \\ \mathbf{J} \mathbf{q}_i(0, t) = 0, \quad (Id - \mathbf{J}) (\boldsymbol{\Gamma} \partial_{xt}^2 \mathbf{q} + \nabla_p \mathbf{H}(\partial_x \mathbf{q}, \mathbf{q})) (x_b, t) = 0, \quad x_b = 0 \text{ or } L \\ \mathbf{B}_p(n, \nabla_{\mathbf{x}}) \mathbf{U}_p = 0, \quad \text{on } \partial\omega, \quad t > 0. \end{array} \right. \quad (4.29)$$

The energy associated to the above strings-soundboard model is naturally defined as

$$\mathcal{E}_{s,p}(\mathbf{q}_i, \mathbf{U}_p) = \sum_i \mathcal{E}_s(\mathbf{q}_i) + \mathcal{E}_p(\mathbf{U}_p) \quad (4.30)$$

where  $\mathcal{E}_s(\mathbf{q}_i)$  is the energy of the  $i^{\text{th}}$  string (see (2.55)) and  $\mathcal{E}_p(\mathbf{U}_p)$  is the energy of the soundboard (see (4.8)). The reader will easily verify that any smooth enough solution  $(\mathbf{q}_i, \mathbf{U}_p)$  of (4.29) satisfies the energy identity (see (4.17) for the definition of  $a_d^p(\cdot, \cdot)$ ):

$$\frac{d}{dt} \mathcal{E}_{s,p}(\mathbf{q}_i, \mathbf{U}_p) = - \sum_i \int_0^L \mathbf{R} \dot{\mathbf{q}}_i \cdot \dot{\mathbf{q}}_i - \sum_i \int_0^L \boldsymbol{\Gamma} \partial_x \dot{\mathbf{q}}_i \cdot \partial_x \dot{\mathbf{q}}_i - a_d^p(\partial_t \mathbf{U}_p, \partial_t \mathbf{U}_p) \quad (4.31)$$

**Remark 7.** *We are conscious that our bridge model is probably oversimplified compared to reality and would deserve to be improved in a future work. For instance, instead of treating the bridge as a part of the soundboard,*

it would be more realistic to treat it as a (quite rigid) beam sticked to the soundboard and to authorize movements of the bridge which are more complex than the simple vertical translation that we shall authorize here. This would transmit the horizontal transverse vibrations of the string to the soundboard, if the enriched string model of section 2.4.3 were used.

## 5. PIANO MODEL

By “putting together” the hammer-strings model (3.8) of section 3 and the strings-sounbard model (4.29) of section 4.2, one could immediately write a complete model for a piano in the vacuum. The only missing phenomenon to transform this system into a model for a musical instrument is the sound radiation in the surrounding air. This is described by the variations of a pressure field in the air, subject to the standard 3D acoustic wave equation. The pressure field is coupled to the soundboard vibrations through fluid-structure interaction : this is what one calls the structural acoustic equations.

### 5.1. Structural acoustic and sound radiation

In what follows, we shall use the same 3D space coordinates  $(\mathbf{x}, z)$ ,  $\mathbf{x} = (x_1, x_2)$  as in section 4.1 and denote  $(e_1, e_2, e_z)$  the corresponding orthonormal basis. All our notations are illustrated in figure 14. The piano, apart for the strings, will be represented as the 3D object  $\overline{\Omega}_f \cap \omega$  where

- $\omega$  is, as in section 4.1, the 2D domain in the plane  $z = 0$  that represents the soundboard,
- $\overline{\Omega}_f$  (where  $\Omega_f$  is a bounded open set of  $\mathbb{R}^3$ ) represents the rim of the piano, which will be considered as an obstacle to the sound propagation.

The 3D domain occupied by the air is the exterior domain

$$\Omega = \mathbb{R}^3 \setminus \left( \overline{\Omega}_f \cup \omega \right) \quad (5.1)$$

We shall distinguish the two sides of the soundboard by introducing

$$\omega^+ \equiv \partial\Omega^+ \cap \omega, \quad \omega^- \equiv \partial\Omega^- \cap \omega, \quad \text{where } \Omega^\pm = \Omega \cap \{\pm z > 0\} \quad (5.2)$$

In particular, a function  $q$  defined in  $\Omega$  (in  $H^1(\Omega)$ ) will have two distinct traces on  $\omega$ , namely  $q|_{\omega^+}$  and  $q|_{\omega^-}$ .

We choose to write the acoustic equations as a first order system and thus introduce the following acoustic unknowns

- the pressure field  $p(\mathbf{x}, z, t) : \Omega \times \mathbb{R}^+ \longrightarrow \mathbb{R}$ ,
- the acoustic velocity field  $V(\mathbf{x}, z, t) : \Omega \times \mathbb{R}^+ \longrightarrow \mathbb{R}^3$ ,

The governing equations are

$$\begin{cases} \rho_a \frac{\partial V}{\partial t} + \nabla p = 0 & (\mathbf{x}, z) \in \Omega, \quad t > 0, \\ \mu_a \frac{\partial p}{\partial t} + \mathbf{div} V = 0 & (\mathbf{x}, z) \in \Omega, \quad t > 0, \end{cases} \quad (5.3)$$

where  $\rho_a > 0$  is the (constant) density of the air,  $\mu_a = \frac{1}{\rho_a c_a} > 0$  the corresponding (constant) Lamé’s coefficient with  $c_a$  the constant propagating velocity of sound in the air,  $\nabla = (\partial_{x_1}, \partial_{x_2}, \partial_z)^t$  and  $\mathbf{div} V = \partial_{x_1} V_1 + \partial_{x_2} V_2 + \partial_z V_z$ . Of course equations (5.3) have to be completed by a set of equations describing the interaction of the pressure field (the fluid) with the structure (the soundboard and the furniture part of the piano). The first



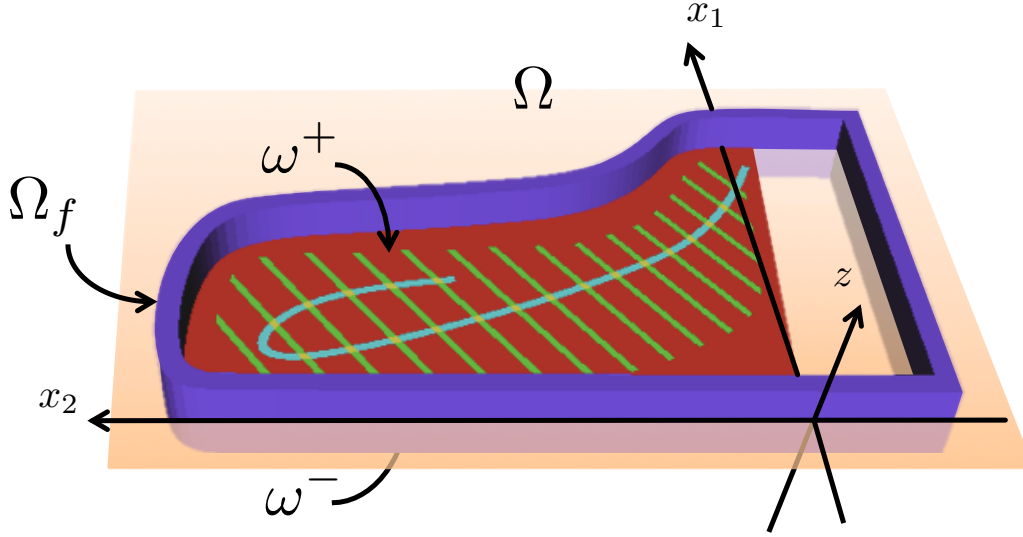


FIGURE 14. Geometric configuration of the piano.

part of the fluid-structure coupling is given by the kinematic conditions which can be interpreted as boundary conditions for (5.3) on

$$\partial\Omega = \partial\Omega_f \cup \omega^+ \cup \omega^-$$

We shall assume that the rim of the piano,  $\Omega_f$ , does not vibrate, which means that we use rigid boundary conditions on  $\partial\Omega_f$  ( $n_f$  denoting the unit normal vector to  $\partial\Omega_f$ ):

$$V \cdot n_f = 0 \quad \text{on } \partial\Omega_f. \quad (5.4)$$

On  $\omega$ , we express the continuity of the normal velocity of the fluid and the transverse velocity of the plate:

$$V \cdot e_z|_{\omega^+} = V \cdot e_z|_{\omega^-} = \partial_t u_p \quad (\equiv \partial_t \mathbf{U}_p \cdot \boldsymbol{\nu}^p) \quad \text{on } \partial\omega \quad (5.5)$$

The second part of the coupling is provided by the description of the efforts applied by the air on the soundboard due to the jump of pressure between the two sides  $\omega^+$  and  $\omega^-$  which constitutes a surfacic force density  $f_a$  appearing at the right hand side of the plate equation (see (4.1) and remark 5), namely

$$f_a = [p]_\omega = p|_{\omega^+} - p|_{\omega^-}. \quad (5.6)$$

## 5.2. The full piano model in PDE form

We build our “complete” piano model by concatenating the content of sections 2.4.2 (or more precisely 2.5), 3, 4.1, 4.2 and 5.1 and more particularly the sub models (3.8), (4.29) and (5.3, 5.4, 5.5). Doing so, we consider a note alone and restrict ourselves to the only the strings that are hit by the hammer. This leads to the following problem:

Find  $\xi : \mathbb{R}^+ \rightarrow \mathbb{R}$ ,  $\mathbf{q}_i : [0, L] \times \mathbb{R}^+ \rightarrow \mathbb{R}^N$ ,  $\mathbf{U}_p : \omega \times \mathbb{R}^+ \rightarrow \mathbb{R}^M$ ,

$p : \Omega \times \mathbb{R}^+ \rightarrow \mathbb{R}$  and  $V : \Omega \times \mathbb{R}^+ \rightarrow \mathbb{R}^3$  such that

### Hammer's equations

$$\begin{cases} m_H \frac{d^2 \xi}{dt^2}(t) = - \sum_i F_i(t), & F_i(t) = k_H \Phi_H(e_i(t)) + r_H \frac{d}{dt} \Phi_H(e_i(t)), \\ e_i(t) = [\bar{\xi} - \xi_i(t) + \xi(t)]^+, & \xi_i(t) = \int_0^L \mathbf{q}_i \cdot \boldsymbol{\nu}^s(x, t) \delta_H(x - x_i) dx, \end{cases} \quad (5.7a)$$

### Strings equations

$$\mathbf{M} \partial_t^2 \mathbf{q}_i + \partial_t (\mathbf{R} \mathbf{q}_i - \partial_x (\boldsymbol{\Gamma} \partial_x \mathbf{q}_i)) - \partial_x (\nabla_p \mathbf{H}_i(\partial_x \mathbf{q}_i, \mathbf{q}_i)) + \nabla_q \mathbf{H}_i(\partial_x \mathbf{q}_i, \mathbf{q}_i) = F_i(t) \delta_H(x) \boldsymbol{\nu}^s \quad (5.7b)$$

### Strings' boundary conditions - strings / soundboard coupling equations

$$\begin{cases} \mathbf{q}_i(L, t) \cdot \boldsymbol{\tau}_\alpha^s = 0, & \mathbf{q}_i(L, t) \cdot \boldsymbol{\nu}_\alpha^s = \int_\omega \chi(\mathbf{x} - \mathbf{x}_a) \mathbf{U}_p(\mathbf{x}, t) \cdot \boldsymbol{\nu}^p \\ \mathbf{J} \mathbf{q}_i(0, t) = 0, & (\mathbf{Id} - \mathbf{J}) (\boldsymbol{\Gamma} \partial_{x_t}^2 \mathbf{q}_i + \nabla_p \mathbf{H}_i(\partial_x \mathbf{q}_i, \mathbf{q}_i))(x_e, t) = 0, \quad x_e = 0 \text{ or } L \end{cases} \quad (5.7c)$$

### Soundboard's equations

$$\mathbf{M}_p \partial_t^2 \mathbf{U}_p + f(\mathcal{A}_p) \partial_t \mathbf{U}_p + \mathbf{A}_p (\nabla_{\mathbf{x}}) \mathbf{U}_p = \chi(\mathbf{x} - \mathbf{x}_a) \boldsymbol{\nu}^p \sum_i (\nabla_q \mathbf{H}_i(\partial_x \mathbf{q}_i, \mathbf{q}_i) + \boldsymbol{\Gamma} \partial_x \mathbf{q}_i) \cdot \boldsymbol{\tau}_\alpha^s + [p]_\omega \boldsymbol{\nu}^p, \quad (5.7d)$$

### Soundboard's boundary conditions

$$\mathbf{B}_p(n, \nabla_{\mathbf{x}}) \mathbf{U}_p = 0, \quad \text{on } \partial\omega, \quad t > 0. \quad (5.7e)$$

### Sound propagation

$$\begin{cases} \rho_a \frac{\partial V}{\partial t} + \nabla p = 0, \\ \mu_a \frac{\partial p}{\partial t} + \operatorname{div} V = 0, \end{cases} \quad (5.7f)$$

### Acoustic boundary conditions - soundboard / air coupling conditions

$$V \cdot e_z|_{\omega^+} = V \cdot e_z|_{\omega^-} = \partial_t \mathbf{U}_p \cdot \boldsymbol{\nu}^p, \quad V \cdot n_f = 0 \quad \text{on } \partial\Omega_f. \quad (5.7g)$$

In the above system, let us recall that  $N = 3$ ,  $M = 3$  and that

- Equation (5.7a), that holds for all  $t > 0$ , governs the movement and the deformation of the hammer. For the meaning of the unknown  $\xi(t)$ , the various coefficients, we refer the reader to section 3. The function  $\Phi_H$  is given by (3.7). The hammer-strings coupling appears through  $e_i$  and  $\xi_i$  and  $x_i$  represents the hammer's impact point on the string.
- Equation (5.7b), that holds for  $x \in [0, L]$  and  $t > 0$ , governs the movement of the  $i$ th string. The meaning of the unknown  $\mathbf{q}_i$  is explained in section 2.4.2 (see (2.58)). The function  $\mathbf{H}_i(\mathbf{p}, \mathbf{q})$  is given, up to the additional index  $i$ , by (2.59) (see also (2.60)). The matrices  $\mathbf{M}$ ,  $\mathbf{R}$  and  $\boldsymbol{\Gamma}$  are given by (2.58) and (2.71) and the function  $\delta_H$  is described in section 3. The hammer-strings coupling appears through  $F_i$ .

- Equations (5.7c) are the boundary conditions for the string (we refer to (2.52) for the definition of  $\mathbf{J}$ ). In particular, the first line represents the kinematic conditions at the point  $x = L$ . The second condition is the kinematic counterpart for the coupling with the soundboard through the right hand side. The function  $\chi$  and the attach point  $\mathbf{x}_a$  are defined in section 4.2. The vectors  $\boldsymbol{\tau}_\alpha^s$  and  $\boldsymbol{\nu}_\alpha^s \in \mathbb{R}^N$  are defined by (4.27) and  $\boldsymbol{\nu}^p \in \mathbb{R}^M$  has been introduced in section 4.1.2.
- Equation (5.7d), that holds for  $\mathbf{x} \in \omega$  and  $t > 0$ , governs the movements of the soundboard. For the meaning of the plate unknown  $\mathbf{U}_p$  is given in section 4.1.2. The matrix  $\mathbf{M}_p$  and the operator  $\mathbf{A}_p(\nabla_{\mathbf{x}})$  are given by (4.4) and (4.5) respectively while the operator  $f(\mathcal{A}_p)$  is defined in section 4.1.3. The coupling soundboard-strings appears through the first term in the right side, the coupling soundboard-air through the second one.
- Equation (5.7e), that holds for  $\mathbf{x} \in \omega$  and  $t > 0$ , corresponds to the boundary condition for the soundboard. The operator  $\mathbf{B}_p(\nabla_{\mathbf{x}})$  is given by (4.6) and  $n$  is the unit normal vector to  $\partial\omega$ .
- Equations (5.7f), that holds for  $(\mathbf{x}, z) \in \Omega$  and  $t > 0$ , governs the variations of the pressure and acoustic velocity fields in the air (see section 5.1).
- Equations (5.7g) are the interaction equations between the air and the structures, namely with the soundboard and with the rigid part of the piano.

Of course, equations (5.7) have to be completed by initial conditions which simply state that the piano (and the surrounding air) is at rest at  $t = 0$ , the instant where the hammer hits the strings with initial velocity  $v_H$ .

$$\left\{ \begin{array}{l} \xi(0) = -\bar{\xi}, \quad \frac{d\xi}{dt}(0) = v_H, \\ \mathbf{q}_i(x, 0) = \frac{\partial \mathbf{q}_i}{\partial t}(x, 0) = 0, \quad x \in [0, L], \\ \mathbf{U}_p(\mathbf{x}, 0) = \frac{\partial \mathbf{U}_p}{\partial t}(\mathbf{x}, 0) = 0, \quad \mathbf{x} \in \omega, \\ p(\mathbf{x}, z, 0) = 0, \quad V(\mathbf{x}, z, 0) = 0, \quad (\mathbf{x}, z) \in \Omega, \end{array} \right. \quad (5.8)$$

We have not studied the mathematical analysis (existence, uniqueness of the solution) of (5.7, 5.8) which is probably a hard task and was not our main purpose in this work. However, this system possesses a fundamental stability property through energy estimates. In fact, it is not difficult to establish that any smooth enough solution of (5.7, 5.8) satisfies the energy identity (see (4.17) for the definition of  $a_d^p(\cdot, \cdot)$ ):

$$\begin{aligned} \frac{d}{dt} \mathcal{E}_{tot}(\xi, \mathbf{q}_i, \mathbf{U}_p, p, V) = & - \sum_i \int_0^L \mathbf{R} \dot{\mathbf{q}}_i \cdot \dot{\mathbf{q}}_i - \sum_i \int_0^L \boldsymbol{\Gamma} \partial_x \dot{\mathbf{q}}_i \cdot \partial_x \dot{\mathbf{q}}_i \\ & - a_d^p(\partial_t \mathbf{U}_p, \partial_t \mathbf{U}_p) - \sum_i r_H \Phi'_H(e_i) [\partial_t e_i]^2 \end{aligned} \quad (5.9)$$

In (5.9), the total energy of the system is given by (we recall that  $\Psi_H$  is a primitive of  $\Phi_H$ , see (3.11))

$$\mathcal{E}_{tot}(\xi, \mathbf{q}_i, \mathbf{U}_p, p, V) = \frac{m_H}{2} |\dot{\xi}|^2 + \sum_i k_H \Psi_H(e_i) + \sum_i \mathcal{E}_s(\mathbf{q}_i) + \mathcal{E}_p(\mathbf{U}_p) + \mathcal{E}_a(p, V). \quad (5.10)$$

where  $\mathcal{E}_s(\mathbf{q}_i)$  is the energy of the  $i^{\text{th}}$  string (see (2.55)),  $\mathcal{E}_p(\mathbf{U}_p)$  is the energy of the soundboard (see (4.8)) while the acoustic energy  $\mathcal{E}_a(p, V)$  is given by:

$$\mathcal{E}_a(p, V) = \int_{\Omega} \left( \frac{\rho_a}{2} |V|^2 + \frac{\mu_a}{2} p^2 \right) \quad (5.11)$$

## CONCLUSIONS &amp; PROSPECTS

The piano model (5.7) gathers most of the current knowledge concerning the main acoustic and vibratory phenomena occurring in the instrument, but also their reciprocal coupling. When designing this time domain model, a particular effort has been made to keep a strong connection with the fundamental laws of physics, but also geometric and physical parameters. This model couples together the hammer, the nonlinear strings, the soundboard with ribs and bridges, and the radiation of acoustic waves in the free space. However, it is the result of compromises or schematizations of a reality far more complex and subject to specific imperatives that we had sometimes to simplify. Especially,

- Taking the non planar motion of the strings into account would only be relevant if we were able to write a hammer model which explains how his motion is generated, and a bridge model which explains how both polarizations are transmitted to the soundboard. So far, we are lacking experimental data to perform such models, but it seems an interesting extension of our work which should improve the realism of the model.
- The ribs and bridges are considered as heterogeneities of the soundboard's plate model, in terms of material, wood orthotropy direction, but also thickness. However, it is a crude approximation of the reality since the theoretical assumptions of the model are not met in this case (especially, ribs and bridges are not symmetrically arranged on both sides of the soundboard, and the thickness is not varying smoothly). We believe that writing a new plate model that would overcome these assumptions would be a great improvement.
- The hammer is given an initial velocity, which means that we totally neglect the hammer's mechanism and more specifically the flexibility of the hammer's shank. Authors have suggested [AJ90] that the pianistic touch lied precisely in this feature, which could seem insignificant at first sight. Therefore, we believe that discriminating different kinds of attacks could be possible if this flexible shank was part of our model and this is the object of a recent article [CD13].
- Experimental results in [Ask93] show the presence of a sound precursor even before the longitudinal precursor that we mentioned in this article. The authors incriminate the very fast transmission of the key shock waves through the keybed and even the whole piano's cabinet, which radiate in the air, creating the so called "touch precursor". This seems to contribute to the percussive attack of piano sounds.
- It may be trivial to point out that most pianists play several notes at the same time. So far, the model we presented only accounts for the excitation of one note, and assumes that the piano is at rest at the very beginning. Considering several notes at the same time would be an easy improvement of the model, but would lead to much more heavy computations, which is why we have not presented this feature yet. In the same idea of achieving a better realism, it would then be interesting to model the actions of the pedals and of the dampers.

## REFERENCES

- [107] Ircam Médiations Recherche/Création 1. Modalys, 2007. <http://forumnet.ircam.fr/701.html>.
- [AJ90] Anders Askenfelt and E V Jansson. From touch to string vibrations. i: Timing in the grand piano action. *J Acoust Soc Am*, 88:52, Jul 1990.
- [Ask93] Anders Askenfelt. Observations on the transient components of the piano tone. KTH, 1993.
- [BAB<sup>+</sup>03] Balazs Bank, F Avanzini, G Borin, G De Poli, F Fontana, and D Rocchesso. Physically informed signal processing methods for piano sound synthesis: a research overview. *EURASIP J. Appl. Signal Process.*, 2003:941–952, Mar 2003.
- [BBKM03] Julien Bensa, S Bilbao, and Richard Kronland-Martinet. The simulation of piano string vibration: from physical models to finite difference schemes and digital waveguides. *J Acoust Soc Am*, 114:1095–1107, Jan 2003.
- [BDS93] I Babuska, J. M D'Harcourt, and C Schwab. Optimal shear correction factors in hierarchical plate modelling. *Math. Modelling Sci. Comput.*, 1(1-2):1–30, 1993.
- [Bil05] S Bilbao. Conservative numerical methods for nonlinear strings. *J Acoust Soc Am*, 118(5):3316–3327, Nov 2005.
- [Bou88] X Boutillon. Model for piano hammers: Experimental determination and digital simulation. *J Acoust Soc Am*, 83:746–754, Jan 1988.

- [BS05] Balazs Bank and Laszlo Sujbert. Generation of longitudinal vibrations in piano strings: From physics to sound synthesis. *J Acoust Soc Am*, 117:2268–2278, Apr 2005.
- [CA94] Antoine Chaigne and Anders Askenfelt. Numerical simulation of piano strings. i. a physical model for a struck string using finite-difference methods. *J Acoust Soc Am*, 95(2):1112–1118, Feb 1994.
- [CCJ12] J Chabassier, A Chaigne, and P Joly. Transitoires de piano et non linéarités des cordes : mesures et simulations. *Proceedings of the 10th French Acoustical Society Meeting (in french)*, Apr. 2012.
- [CD13] J. Chabassier and M. Duruflé. Energy based simulation of a timoshenko beam in non-forced rotation. application to the flexible piano hammer shank. *Submitted to Wave Motion*, 2013.
- [CI12] Juliette Chabassier and Sébastien Imperiale. Stability and dispersion analysis of improved time discretization for simply supported prestressed Timoshenko systems. Application to the stiff piano string. *Wave Motion*, 50(3):456–480, November 2012.
- [CJ10] Juliette Chabassier and Patrick Joly. Energy preserving schemes for nonlinear hamiltonian systems of wave equations. application to the vibrating piano string. *Computer Methods in Applied Mechanics and Engineering*, 199:2779–2795, Nov 2010.
- [Con96] H A Conklin. Design and tone in the mechanoacoustic piano. part ii. piano structure. *J Acoust Soc Am*, 100(2):695–708, Aug 1996.
- [Con97] H A Conklin. Piano strings and “phantom” partials. *J Acoust Soc Am*, 102(1):659, Jan 1997.
- [Cow66] G Cowper. The shear coefficient in timoshenko’s beam theory. *ASME, J. Appl. Math.*, 33:335–340, Jan 1966.
- [Cue06] J Cuenca. Modélisation du couplage corde - chevalet - table d’harmonie dans le registre aigu du piano. *JJCAAS 2006*, pages 1–1, Oct 2006.
- [DCJB03] Grégoire Derveaux, Antoine Chaigne, Patrick Joly, and E Bécache. Time-domain simulation of a guitar: Model and method. *J Acoust Soc Am*, 114(6):3368–3383, Dec 2003.
- [Ege10] Kerem Ege. La table d’harmonie du piano – études modales en basses et moyennes fréquences. *Thèse de Doctorat*, pages 1–190, Mar 2010.
- [GJ04] N Giordano and M Jiang. Physical modeling of the piano. *EURASIP J. Appl. Signal Process.*, 2004(7):926–933, Jan 2004.
- [Gui] Philippe Guillaume. Pianoteq. <http://www.pianoteq.com>.
- [IMB08] A Izadbakhsh, J McPhee, and S Birkett. Dynamic modeling and experimental testing of a piano action mechanism with a flexible hammer shank. *Journal of Computational and Nonlinear Dynamics*, 3(031004):1–10, Jul 2008.
- [MI68] PM Morse and KU Ingard. *Theoretical Acoustics*. Princeton University Press, 1968.
- [NI86] Isao Nakamura and S Iwaoka. Piano tone synthesis using digital filters by computer simulation. *Acoustics, Speech, and Signal Processing, IEEE International Conference on ICASSP’86.*, 11:1293–1296, 1986.
- [PL88] M Podlesak and A R Lee. Dispersion of waves in piano strings. *J Acoust Soc Am*, 83(1):305–317, Jan 1988.
- [RCJ99] Leila Rhaouti, Antoine Chaigne, and Patrick Joly. Time-domain modeling and numerical simulation of a kettledrum. *J Acoust Soc Am*, 105(6):3545–3562, Jun 1999.
- [Rei45] E Reissner. The effect of transverse shear deformation on the bending of elastic plates. *J. Appl. Mech.*, 12:69–77, 1945.
- [Stu95] A Stulov. Hysteretic model of the grand piano hammer felt. *J Acoust Soc Am*, 97:2577, 1995.
- [TT94] Li Ta-Tsien. *Global classical solutions for quasilinear hyperbolic systems*. Wiley, 1994.
- [VBM09] C.P Vyasarayani, S Birkett, and J McPhee. Modeling the dynamics of a compliant piano action mechanism impacting an elastic stiff string. *J Acoust Soc Am*, 125(6):4034–4042, Jun 2009.
- [Wei77] G Weinreich. Coupled piano strings. *J Acoust Soc Am*, 62(6):1474, Dec 1977.