



HAL
open science

Unbiased Volumetric Registration via Nonlinear Elastic Regularization

Igor Yanovsky, Carole Le Guyader, Alex Leow, Arthur W. Toga, Paul M. Thompson, Luminita Vese

► **To cite this version:**

Igor Yanovsky, Carole Le Guyader, Alex Leow, Arthur W. Toga, Paul M. Thompson, et al.. Unbiased Volumetric Registration via Nonlinear Elastic Regularization. 2nd MICCAI Workshop on Mathematical Foundations of Computational Anatomy, Oct 2008, New-York, United States. inria-00629762

HAL Id: inria-00629762

<https://inria.hal.science/inria-00629762>

Submitted on 6 Oct 2011

HAL is a multi-disciplinary open access archive for the deposit and dissemination of scientific research documents, whether they are published or not. The documents may come from teaching and research institutions in France or abroad, or from public or private research centers.

L'archive ouverte pluridisciplinaire **HAL**, est destinée au dépôt et à la diffusion de documents scientifiques de niveau recherche, publiés ou non, émanant des établissements d'enseignement et de recherche français ou étrangers, des laboratoires publics ou privés.

Unbiased Volumetric Registration via Nonlinear Elastic Regularization

Igor Yanovsky¹, Carole Le Guyader², Alex Leow³, Arthur Toga³,
Paul Thompson³, and Luminita Vese¹

¹ Department of Mathematics, University of California, Los Angeles, USA,

² Institute of Mathematical Research of Rennes, France,

³ Laboratory of Neuro Imaging, UCLA School of Medicine, USA. *

Abstract. In this paper, we propose a new large-deformation nonlinear image registration model in three dimensions, based on nonlinear elastic regularization and unbiased registration. Both the nonlinear elastic and the unbiased functionals are simplified introducing, in the modeling, a second unknown that mimics the Jacobian matrix of the displacement vector field, reducing the minimization to involve linear differential equations. In contrast to recently proposed unbiased fluid registration method, the new model is written in a unified variational form and is minimized using gradient descent on the corresponding Euler-Lagrange equations. As a result, the new unbiased nonlinear elasticity model is computationally more efficient and easier to implement than the unbiased fluid registration. The model was tested using three-dimensional serial MRI images and shown to have some advantages for computational neuroimaging.

1 Introduction

Given two images, the source and target, the goal of image registration is to find an optimal diffeomorphic spatial transformation such that the deformed source image is aligned with the target image. In the case of non-parametric registration methods (the class of methods we are interested in), the problem can be phrased as a functional minimization problem whose unknown is the displacement vector field \mathbf{u} . Usually, the devised functional consists of a distance measure (intensity-based, correlation-based, mutual-information based [1] or metric-structure-comparison based [2]) and a regularizer that guarantees smoothness of the displacement vector field. Several regularizers have been investigated (see Part II of [1] for a review). Generally, physical arguments motivate the selection of the regularizer. Among those currently used is the linear elasticity smoother first introduced by Broit [3]. The objects to be registered are considered to be observations of the same elastic body at two different times, before and after being subjected to a deformation as mentioned in [1]. The smoother, in this case, is the linearized elastic potential of the displacement vector field. However, this model is unsuitable for problems involving large-magnitude deformations.

* This work was funded by the National Institutes of Health through the NIH Roadmap for Medical Research, Grant U54 RR021813 entitled Center for Computational Biology (CCB).

In [4], Christensen *et al.* proposed a viscous fluid model to overcome this issue. The deforming image is considered to be embedded in viscous fluid whose motion is governed by Navier-Stokes equations for conservation of momentum:

$$\mu \Delta \mathbf{v}(\mathbf{x}, t) + (\nu + \mu) \nabla (\nabla \cdot \mathbf{v}(\mathbf{x}, t)) = \mathbf{f}(\mathbf{x}, \mathbf{u}(\mathbf{x}, t)), \quad (1)$$

$$\mathbf{v}(\mathbf{x}, t) = \mathbf{u}_t(\mathbf{x}, t) + \nabla \mathbf{u}(\mathbf{x}, t) \cdot \mathbf{v}(\mathbf{x}, t). \quad (2)$$

Here, equation (2), defining material derivative of \mathbf{u} , nonlinearly relates the velocity and displacement vector fields.

One drawback of this method is the computational cost. Numerically, the image-derived force field $\mathbf{f}(\mathbf{x}, \mathbf{u}(\mathbf{x}, t))$ is first computed at time t . Fixing the force field \mathbf{f} , linear equation (1) is solved for $\mathbf{v}(\mathbf{x}, t)$ numerically using the successive over-relaxation (SOR) scheme. Then, an explicit Euler scheme is used to advance \mathbf{u} in time. Recent works [5–7] applied Riemannian nonlinear elasticity priors to deformation velocity fields. These alternating frameworks, however, are time-consuming, which motivates the search for faster implementations (see for instance [8] or [9] in which the instantaneous velocity \mathbf{v} is obtained by convolving \mathbf{f} with a Gaussian kernel).

In this paper, which is inspired from related works on segmentation [10] and on two-dimensional registration [11], we propose an alternative approach to fluid registration. The new model is derived from a variational problem which is not in the form of a two-step algorithm and which can also produce large-magnitude deformations. For that purpose, a nonlinear elasticity smoother is introduced in three dimensions. As will be seen later, the computation of the Euler-Lagrange equations in this case is cumbersome. We circumvent this issue by introducing a second unknown, a matrix variable V , which approximates the Jacobian matrix of \mathbf{u} . The nonlinear elastic regularizer is now applied to V , removing the nonlinearity in the derivatives of the unknown \mathbf{u} in the Euler-Lagrange equations. The Euler-Lagrange equations are straightforwardly derived and a gradient descent method is used.

Also, allowing large deformations to occur may yield non-diffeomorphic deformation mappings. In [4], Christensen *et al.* proposed a regriding technique that re-samples the deforming image and re-initializes the process once the value of the deformation Jacobian drops below a certain threshold. In [12], Haber and Modersitzki introduced an elastic registration model subjected to volume-preserving constraints. To ensure that the transformation $\mathbf{g}(\mathbf{x}) = \mathbf{x} - \mathbf{u}(\mathbf{x})$ is volume-preserving (that is, for any domain Ω , $\int_{\Omega} d\mathbf{x} = \int_{\mathbf{g}(\Omega)} d\mathbf{x}$), they proposed the following pointwise constraint: $\det(\mathcal{I} - D\mathbf{u}(\mathbf{x})) - 1 = 0$. Pursuing in the same direction in [13], the authors introduced a minimization problem under inequality constraints on the Jacobian.

Here we use an information-theoretic approach previously introduced in [14]. In [14], the authors considered a smooth deformation \mathbf{g} that maps domain Ω bijectively onto itself. Consequently, \mathbf{g} and \mathbf{g}^{-1} are bijective and globally volume-preserving. Probability density functions can thus be associated with the deformation \mathbf{g} and its inverse \mathbf{g}^{-1} . The authors then proposed to quantify the magnitude of the deformation by means of the symmetric Kullback-Leibler distance between the probability density functions associated with the deformation and the identity mapping. This distance, when rewritten using skew-symmetry properties, is viewed as a cost function and is combined with the viscous fluid model for registration, which leads to an unbiased fluid registration

model. Unlike the unbiased fluid registration model, the unbiased nonlinear elasticity method, introduced here, allows the functional to be written “in closed form”. The new model also does not require expensive Navier-Stokes solver (or its approximation) at each step as previously mentioned.

2 Method

Let Ω be an open and bounded domain in \mathbb{R}^3 . Without loss of generality, we assume that the volume of Ω is 1, i.e. $|\Omega| = 1$. Let $I_1, I_2 : \Omega \rightarrow \mathbb{R}$ be the two images to be registered. We seek the transformation $\mathbf{g} : \Omega \rightarrow \Omega$ that maps the source image I_2 into correspondence with the target image I_1 . In this paper, we will restrict this mapping to be differentiable, one-to-one, and onto. We denote the Jacobian matrix of a deformation \mathbf{g} to be $D\mathbf{g}$, with Jacobian denoted by $|D\mathbf{g}(\mathbf{x})| = \det(D\mathbf{g}(\mathbf{x}))$ (thus we will use the notation $|V| := \det(V)$ for any 3×3 matrix V). The displacement field $\mathbf{u}(\mathbf{x})$ from the position \mathbf{x} in the deformed image $I_2 \circ \mathbf{g}(\mathbf{x})$ back to $I_2(\mathbf{x})$ is defined in terms of the deformation $\mathbf{g}(\mathbf{x})$ by the expression $\mathbf{g}(\mathbf{x}) = \mathbf{x} - \mathbf{u}(\mathbf{x})$ at every point $\mathbf{x} \in \Omega$. Thus, we consider the problems of finding \mathbf{g} and \mathbf{u} as equivalent.

In general, nonlinear image registration models may be formulated in a variational framework. The minimization problems often define the energy functional E as a linear combination of image matching term F and the regularizing term R : $\inf_{\mathbf{u}} \{E(\mathbf{u}) = F(\mathbf{u}) + \lambda_0 R(\mathbf{u})\}$. Here, $\lambda_0 > 0$ is a weighting parameter.

2.1 Registration metrics

In this paper, the matching functional F takes the form of the L^2 norm (the sum of squared intensity differences), $F = F_{L^2}$, and the mutual information, $F = F_{MI}$.

L^2 -norm: The L^2 -norm matching functional is suitable when the images have been acquired through similar sensors (with additive Gaussian noise) and thus are expected to present the same intensity range and distribution. The L^2 distance between the deformed image $I_2 \circ \mathbf{g}(\mathbf{x}) = I_2(\mathbf{x} - \mathbf{u}(\mathbf{x}))$ and target image $I_1(\mathbf{x})$ is defined as

$$F_{L^2}(\mathbf{u}) = \frac{1}{2} \int_{\Omega} (I_2(\mathbf{x} - \mathbf{u}(\mathbf{x})) - I_1(\mathbf{x}))^2 d\mathbf{x}. \quad (3)$$

Mutual Information: Mutual information can be used to align images of different modalities, without requiring knowledge of the relationship of the two registered images [15, 16]. Here, the intensity distributions estimated from $I_1(\mathbf{x})$ and $I_2(\mathbf{x} - \mathbf{u}(\mathbf{x}))$ are denoted by $p_{\mathbf{u}}^{I_1}$ and $p_{\mathbf{u}}^{I_2}$, respectively, and an estimate of their joint intensity distribution by $p_{\mathbf{u}}^{I_1, I_2}$. We let $i_1 = I_1(\mathbf{x})$, $i_2 = I_2(\mathbf{x} - \mathbf{u}(\mathbf{x}))$ denote intensity values at point $\mathbf{x} \in \Omega$. Given the displacement field \mathbf{u} , the mutual information computed from I_1 and I_2 is provided by $MI_{\mathbf{u}}^{I_1, I_2} = \int_{\mathbb{R}^2} p_{\mathbf{u}}^{I_1, I_2}(i_1, i_2) \log[p_{\mathbf{u}}^{I_1, I_2}(i_1, i_2)/(p_{\mathbf{u}}^{I_1}(i_1)p_{\mathbf{u}}^{I_2}(i_2))] di_1 di_2$. We seek to maximize the mutual information between $I_2(\mathbf{x} - \mathbf{u}(\mathbf{x}))$ and $I_1(\mathbf{x})$, or equivalently, minimize the negative of $MI_{\mathbf{u}}^{I_1, I_2}$:

$$F_{MI}(I_1, I_2, \mathbf{u}) = -MI_{\mathbf{u}}^{I_1, I_2}. \quad (4)$$

2.2 Nonlinear Elastic Regularization

The theory of elasticity is based on the notion of strain. Strain is defined as the amount of deformation an object experiences compared to its original size and shape. In three spatial dimensions, the strain tensor, $\mathcal{E} = [\varepsilon_{ij}] \in \mathbb{R}^{3 \times 3}$, $1 \leq i, j \leq 3$, is a symmetric tensor used to quantify the strain of an object undergoing a deformation. The nonlinear strain is defined as $\varepsilon_{ij}(\mathbf{u}) = \frac{1}{2}(\partial_j u_i + \partial_i u_j + \sum_{k=1}^3 \partial_i u_k \partial_j u_k)$, with the nonlinear strain tensor matrix given by

$$\mathcal{E}(\mathbf{u}) = \frac{1}{2}(D\mathbf{u}^t + D\mathbf{u} + D\mathbf{u}^t D\mathbf{u}). \quad (5)$$

Stored energy (Saint Venant-Kirchhoff material) is defined as

$$W(\mathcal{E}) = \frac{\nu}{2}(\text{trace}(\mathcal{E}))^2 + \mu \text{trace}(\mathcal{E}^2),$$

where ν and μ are Lamé elastic material constants. The regularization for nonlinear elasticity becomes

$$R_E(\mathbf{u}) = \int_{\Omega} W(\mathcal{E}(\mathbf{u})) d\mathbf{x}.$$

The regularization term $R_E(\mathbf{u})$ can be minimized with respect to \mathbf{u} . However, since the regularization term is written in terms of partial derivatives of components of \mathbf{u} , the Euler-Lagrange equations become complicated and are computationally expensive to minimize. Instead, following earlier theoretical work [17], we minimize an approximate functional by introducing the matrix variable

$$V \approx D\mathbf{u} \quad (6)$$

and thus consider a new form of nonlinear elasticity regularization functional

$$R_E(\mathbf{u}, V) = \int_{\Omega} W(\widehat{V}) d\mathbf{x} + \frac{\beta}{2} \int_{\Omega} \|V - D\mathbf{u}\|_F^2 d\mathbf{x}, \quad (7)$$

where $\widehat{V} = \frac{1}{2}(V^t + V + V^t V)$, β is a positive constant, and $\|\cdot\|_F$ denotes the Frobenius norm. For β large enough, $R_E(\mathbf{u})$ is well approximated by $R_E(\mathbf{u}, V)$. In the limit as $\beta \rightarrow +\infty$, we obtain $D\mathbf{u} \approx V$ in the L^2 -topology.

The idea of duplication of variables was also used in previous work [18] by Cachier *et al.* but for a different problem. In their case, the registration energy depends on two variables that are both vector fields. The first vector field \mathbf{C} is a set of correspondences between points based on intensity similarity, while the second, denoted by \mathbf{T} , is a smooth vector field constrained by the regularization energy and attracted by the set of correspondences \mathbf{C} .

2.3 Unbiased Registration Constraint

In [14], the authors proposed an unbiased fluid image registration approach. Contrary to classical methods for which the term *unbiased* is used in the sense of symmetric registration, in [14], *unbiased* means that the Jacobian determinants of the deformations recovered between a pair of images follow a log-normal distribution, with zero mean after log-transformation. The authors argued that this distribution is beneficial when recovering change in regions of homogeneous intensity, and in ensuring symmetrical results when the order of two images being registered is switched. As derived in [14] using information theory, the unbiased regularization term is given as

$$R_{UB}(\mathbf{u}) = \int_{\Omega} (|D(\mathbf{x} - \mathbf{u}(\mathbf{x}))| - 1) \log |D(\mathbf{x} - \mathbf{u}(\mathbf{x}))| d\mathbf{x}. \quad (8)$$

It is important to note that R_{UB} generates inverse-consistent deformation maps. The inverse-consistent property of the unbiased technique was shown in a validation study of the unbiased fluid registration methods [19]. Also, to see why minimizing equation (8) leads to unbiased deformation in the logarithmic space, we observe that the integrand is always non-negative, and only evaluates to zero when the deformation \mathbf{g} is volume-preserving everywhere ($|D\mathbf{g}| = 1$ everywhere). Thus, by treating it as a cost, we recover zero-change by minimizing this cost when we compare images differing only in noise.

Given equation (6), we have $D\mathbf{g} = \mathcal{I} - D\mathbf{u} \approx \mathcal{I} - V$, where \mathcal{I} is the 3×3 identity matrix. Therefore, as in subsection 2.2, to simplify the discretization, we introduce

$$R_{UB}(V) = \int_{\Omega} (|\mathcal{I} - V| - 1) \log |\mathcal{I} - V| d\mathbf{x}. \quad (9)$$

Recall that here $|\mathcal{I} - V| = \det(\mathcal{I} - V)$.

2.4 Unbiased Nonlinear Elasticity Registration

The total energy functional employed in this work, is given as a linear combination of the similarity measure F (which is either F_{L^2} from (3) or F_{MI} from (4)), nonlinear elastic regularization R_E in (7), and unbiased regularization R_{UB} in (9):

$$E(\mathbf{u}, V) = F(\mathbf{u}) + R_E(\mathbf{u}, V) + \lambda R_{UB}(V). \quad (10)$$

The explicit weighting parameter is omitted in front of $R_E(\mathbf{u}, V)$, since this term is weighted by Lamé constants ν and μ . We solve the Euler-Lagrange equations in \mathbf{u} and V using the gradient descent method, parameterizing the descent direction by an artificial time t ,

$$\frac{\partial \mathbf{u}}{\partial t} = -\partial E_{\mathbf{u}}(\mathbf{u}, V) = -\partial_{\mathbf{u}} F(\mathbf{u}) - \partial_{\mathbf{u}} R_E(\mathbf{u}, V), \quad (11)$$

$$\frac{\partial V}{\partial t} = -\partial E_V(\mathbf{u}, V) = -\partial_V R_E(\mathbf{u}, V) - \lambda \partial_V R_{UB}(V), \quad (12)$$

which gives systems of three and nine equations, respectively. Explicit expressions for the gradients in these equations are given in Section 3.

Remark 1. The regularization on the deformation \mathbf{g} proposed in this work can be expressed in a general form $R(\mathbf{g}) = \int_{\Omega} R_1(D\mathbf{g})d\mathbf{x} + \int_{\Omega} R_2(|D\mathbf{g}|)d\mathbf{x}$, with $|D\mathbf{g}| := \det(D\mathbf{g})$. For the minimization, an auxiliary variable can also be introduced to simplify the numerical calculations, removing the nonlinearity in the derivatives.

3 Implementation

3.1 The Energy Gradients

Computing the first variation of functional $R_E(\mathbf{u}, V)$, in equation (7), with respect to \mathbf{u} gives the following components of gradient $\partial_{\mathbf{u}}R_E(\mathbf{u}, V)$:

$$\partial_{u_k}R_E(\mathbf{u}, V) = \beta(\partial_1v_{k1} + \partial_2v_{k2} + \partial_3v_{k3} - \Delta u_k), \quad k = 1, 2, 3.$$

The first variation of $R_E(\mathbf{u}, V)$ with respect to V , with $V = [v_{ij}]$, gives $\partial_V R_E(\mathbf{u}, V)$:

$$\begin{aligned} \partial_{v_{11}}R_E(\mathbf{u}, V) &= \beta(v_{11} - \partial_1u_1) + \nu c_1(1 + v_{11}) + \mu(c_2(1 + v_{11}) + c_5v_{12} + c_6v_{13}), \\ \partial_{v_{12}}R_E(\mathbf{u}, V) &= \beta(v_{12} - \partial_2u_1) + \nu c_1v_{12} + \mu(c_3v_{12} + c_5(1 + v_{11}) + c_7v_{13}), \\ \partial_{v_{13}}R_E(\mathbf{u}, V) &= \beta(v_{13} - \partial_3u_1) + \nu c_1v_{13} + \mu(c_4v_{13} + c_6(1 + v_{11}) + c_7v_{12}), \\ \partial_{v_{21}}R_E(\mathbf{u}, V) &= \beta(v_{21} - \partial_1u_2) + \nu c_1v_{21} + \mu(c_2v_{21} + c_5(1 + v_{22}) + c_6v_{23}), \\ \partial_{v_{22}}R_E(\mathbf{u}, V) &= \beta(v_{22} - \partial_2u_2) + \nu c_1(1 + v_{22}) + \mu(c_3(1 + v_{22}) + c_5v_{21} + c_7v_{23}), \\ \partial_{v_{23}}R_E(\mathbf{u}, V) &= \beta(v_{23} - \partial_3u_2) + \nu c_1v_{23} + \mu(c_4v_{23} + c_6v_{21} + c_7(1 + v_{22})), \\ \partial_{v_{31}}R_E(\mathbf{u}, V) &= \beta(v_{31} - \partial_1u_3) + \nu c_1v_{31} + \mu(c_2v_{31} + c_5v_{32} + c_6(1 + v_{33})), \\ \partial_{v_{32}}R_E(\mathbf{u}, V) &= \beta(v_{32} - \partial_2u_3) + \nu c_1v_{32} + \mu(c_3v_{32} + c_5v_{31} + c_7(1 + v_{33})), \\ \partial_{v_{33}}R_E(\mathbf{u}, V) &= \beta(v_{33} - \partial_3u_3) + \nu c_1(1 + v_{33}) + \mu(c_4(1 + v_{33}) + c_6v_{31} + c_7v_{32}), \end{aligned}$$

where

$$\begin{aligned} c_1 &= v_{11} + v_{22} + v_{33} + \frac{1}{2}(v_{11}^2 + v_{21}^2 + v_{31}^2 + v_{12}^2 + v_{22}^2 + v_{32}^2 + v_{13}^2 + v_{23}^2 + v_{33}^2), \\ c_2 &= 2v_{11} + v_{11}^2 + v_{21}^2 + v_{31}^2, & c_5 &= v_{21} + v_{12} + v_{11}v_{12} + v_{21}v_{22} + v_{31}v_{32}, \\ c_3 &= 2v_{22} + v_{12}^2 + v_{22}^2 + v_{32}^2, & c_6 &= v_{31} + v_{13} + v_{11}v_{13} + v_{21}v_{23} + v_{31}v_{33}, \\ c_4 &= 2v_{33} + v_{13}^2 + v_{23}^2 + v_{33}^2, & c_7 &= v_{32} + v_{23} + v_{12}v_{13} + v_{22}v_{23} + v_{32}v_{33}. \end{aligned}$$

We can compute the first variation of (9), obtaining $\partial_V R_{UB}(V)$. We first simplify the notation, letting $J = |\mathcal{I} - V|$. Also, denote $L(J) = (J - 1) \log J$. Hence, $L'(J) =$

$dL(J)/dJ = 1 + \log J - 1/J$. Thus,

$$\begin{aligned}\partial_{v_{11}} R_{UB}(V) &= -((1 - v_{22})(1 - v_{33}) - v_{32}v_{23})L'(J), \\ \partial_{v_{12}} R_{UB}(V) &= -(v_{23}v_{31} + v_{21}(1 - v_{33}))L'(J), \\ \partial_{v_{13}} R_{UB}(V) &= -(v_{21}v_{32} + (1 - v_{22})v_{31})L'(J), \\ \partial_{v_{21}} R_{UB}(V) &= -(v_{32}v_{13} + v_{12}(1 - v_{33}))L'(J), \\ \partial_{v_{22}} R_{UB}(V) &= -((1 - v_{11})(1 - v_{33}) - v_{13}v_{31})L'(J), \\ \partial_{v_{23}} R_{UB}(V) &= -(v_{12}v_{31} + v_{32}(1 - v_{11}))L'(J), \\ \partial_{v_{31}} R_{UB}(V) &= -(v_{12}v_{23} + v_{13}(1 - v_{22}))L'(J), \\ \partial_{v_{32}} R_{UB}(V) &= -(v_{21}v_{13} + v_{23}(1 - v_{11}))L'(J), \\ \partial_{v_{33}} R_{UB}(V) &= -((1 - v_{11})(1 - v_{22}) - v_{12}v_{21})L'(J).\end{aligned}$$

3.2 Algorithm

We are now ready to give the algorithm for the unbiased registration via nonlinear elastic regularization.

Algorithm 1 Unbiased Registration via Nonlinear Elastic Regularization

- 1: Initialize $t = 0$, $\mathbf{u}(\mathbf{x}, 0) = 0$, and $V(\mathbf{x}, 0) = 0$.
 - 2: Calculate $V(\mathbf{x}, t)$ using equation (12).
Steps 3-5 describe the procedure for solving equation (11).
 - 3: Calculate the perturbation of the displacement field $\mathbf{R}(\mathbf{x}) = -\partial E_u(\mathbf{u}, V)$.
 - 4: Time step Δt is calculated adaptively so that $\Delta t \cdot \max(\|\mathbf{R}\|_2) = \delta u$, where δu is the maximal displacement allowed in one iteration. Results in this work are obtained with $\delta u = 0.1$.
 - 5: Advance equation (11), i.e. $\partial \mathbf{u}(\mathbf{x}, t)/\partial t = \mathbf{R}(\mathbf{x})$, in time, with time step from step 4, solving for $\mathbf{u}(\mathbf{x}, t)$.
 - 6: If the cost functional in (10) decreases by sufficiently small amount compared to the previous iteration, then stop.
 - 7: Let $t := t + \Delta t$ and go to step 2.
-

4 Results and Discussion

We tested the proposed *unbiased nonlinear elastic* registration model and compared the results to those obtained with the *unbiased fluid registration* method [14], where the unbiased regularization constraint (8) was coupled with the L^2 matching functional (3) and fluid regularization (1), (2). Here, both methods were coupled with the L^2 and mutual information (MI) based similarity measures. In our experiments, we used a pair of serial MRI images ($220 \times 220 \times 220$) from the Alzheimer's Disease Neuroimaging Initiative (ADNI). Since the images were acquired one year apart, from a subject with

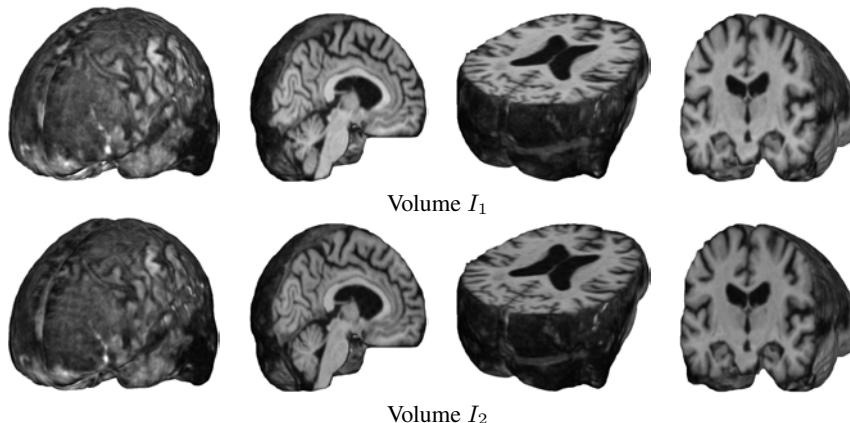


Fig. 1. Serial MRI images from the ADNI follow-up dataset (images acquired one year apart) are shown. Volumes I_1 (row 1) and I_2 (row 2) are depicted as a brain volume (column 1) and from sagittal (column 2), axial (column 3), and coronal (column 4) views. Nonrigid registration aligns volume I_2 into correspondence with volume I_1 .

Alzheimer’s disease, real anatomical changes are present, which allows methods to be compared in the presence of true biological changes.

In the tests performed using unbiased nonlinear elasticity coupled with L^2 matching, values of $\beta = 20000$ in equation (7) and $\lambda = 2000$ in equation (10) were chosen. For MI matching, $\beta = 80$ and $\lambda = 8$ were used. The values of the Lamé coefficients were chosen to be equal, $\mu = \nu$, in all experiments. Bigger values of μ and ν allow for more smoothing. For unbiased fluid registration model, described in [14], $\lambda = 500$ was chosen for L^2 matching, and $\lambda = 5$ for MI matching.

Figure 2 shows the images being registered along with the resulting Jacobian maps. Results generated using the fluid and nonlinear elasticity based unbiased models are similar, both suggesting a mild volume reduction in gray and white matter and ventricular enlargement that is observed in Alzheimer’s disease patients. The advantages of the unbiased nonlinear elasticity model is its more locally plausible reproduction of atrophic changes in the brain and its robustness to original misalignment of brain volumes, which is especially noticeable on the brain surface. The unbiased nonlinear elasticity model coupled with L^2 matching generated very similar results to those obtained with the MI similarity measure, partly because difference images typically contain only noise after registration. Unbiased fluid registration method, however, is more effective in modeling the regional neuroanatomical changes, showing more clearly which parts of the volume have undergone largest tissue changes, such as ventricular enlargement as shown in Figure 2.

Figure 3 shows deformed grids generated with unbiased fluid and unbiased nonlinear elastic registration models. Figure 4 shows the energy decrease per iteration for both models.

In Figure 5, we examined the *inverse consistency* of the mappings [20] generated using unbiased nonlinear elastic registration. Here, the deformation was computed in

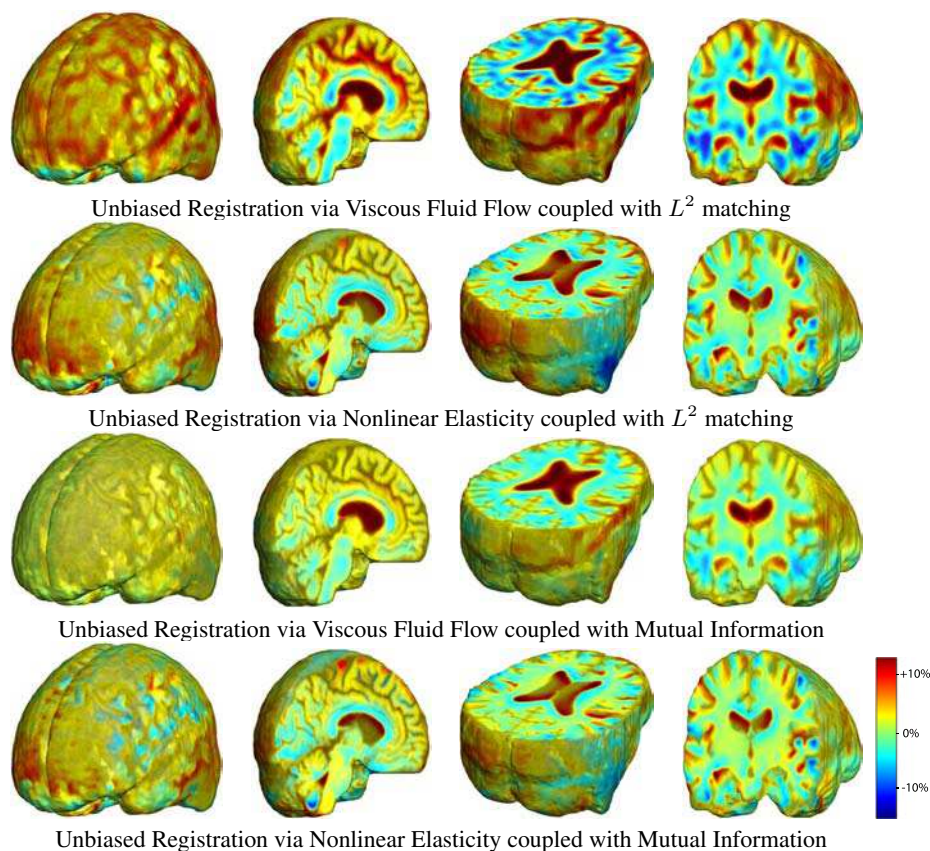


Fig. 2. Nonrigid registration was performed on the Serial MRI images from the ADNI Follow-up dataset using unbiased fluid registration and unbiased nonlinear elasticity registration, both coupled with L^2 and MI matching. Jacobian maps are superimposed on the target volume.

both directions (time 2 to time 1, and time 1 to time 2) using mutual information matching. The forward and backward Jacobian maps were concatenated (in an ideal situation, this operation should yield the identity), with the products of Jacobians having values close to 1.

The unbiased nonlinear elasticity model does not require expensive Navier-Stokes solver (or its approximation), which is employed at each iteration for fluid flow models. Hence, in our experiments, unbiased nonlinear elasticity iteration (based on explicit scheme) took 15-20% less time than the unbiased fluid step. Convergence was obtained after roughly the same number of iterations for both methods, resulting in better performance for the unbiased nonlinear elasticity model.

To conclude, we have provided an alternative unified minimization approach to the unbiased fluid registration model and have compared both models. The proposed method proves to be easier to implement and is less computationally intensive. Also, a key benefit of the variational framework and of the numerical scheme of the unbiased

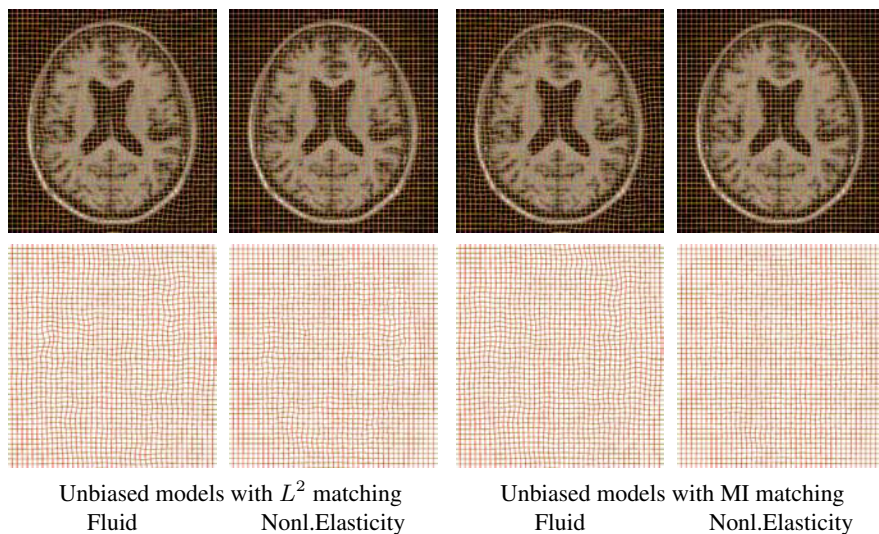


Fig. 3. Results obtained using unbiased fluid registration and unbiased nonlinear elasticity registration, both coupled with L^2 and MI matching. The generated grids are superimposed on top of 2D cross-sections of the 3D volumes (row 1) and are shown separately (row 2).

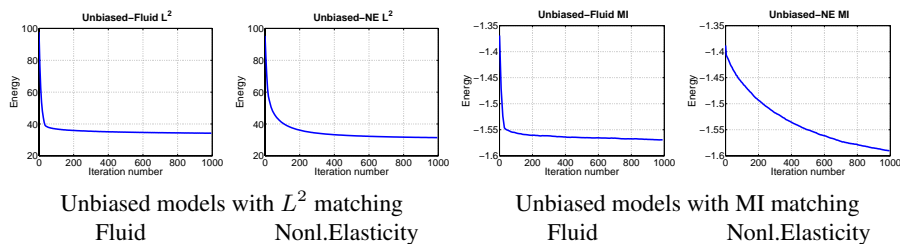


Fig. 4. Energy per iteration for the unbiased fluid registration and unbiased nonlinear elasticity registration, both coupled with L^2 and MI matching.

nonlinear elastic registration model is its robustness to numerical constraints such as CFL conditions. The method allows to remove the nonlinearity in the derivatives of the unknown \mathbf{u} in the Euler-Lagrange equations. Future studies will examine the registration accuracy of the different models where ground truth is known, and will compare each model's power for detecting inter-group differences or statistical effects on rates of atrophy.

References

1. Modersitzki, J.: Numerical Methods for Image Registration (Numerical Mathematics and Scientific Computation). Oxford University Press, New York (2004)
2. Lord, N., Ho, J., Vemuri, B., Eisenschenk, S.: Simultaneous registration and parcellation of bilateral hippocampal surface pairs for local asymmetry quantification. IEEE Transactions on Medical Imaging **26**(4) (2007) 471–478

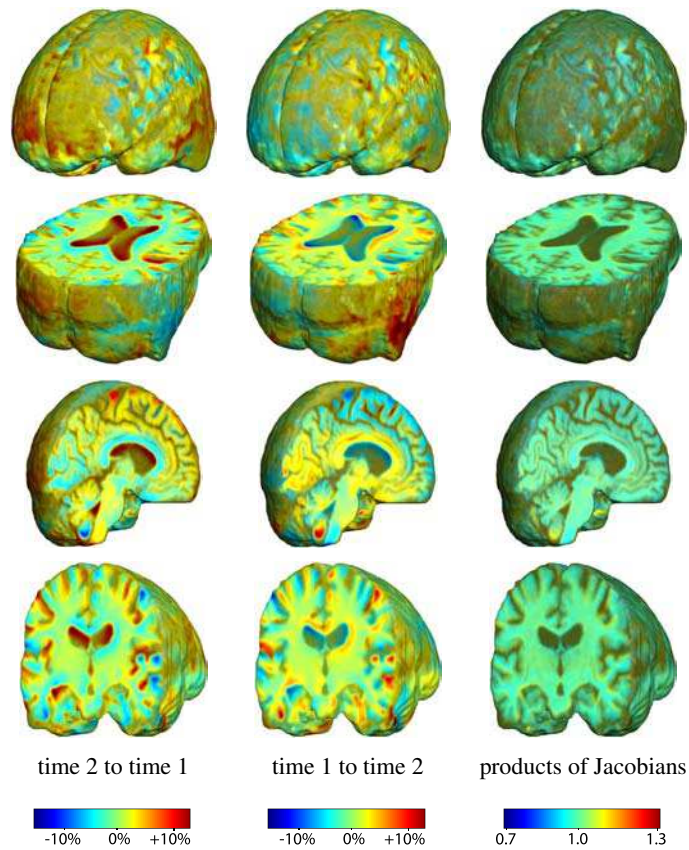


Fig. 5. This figure examines the inverse consistency of the unbiased nonlinear elastic registration. Here, the model is coupled with mutual information matching. Jacobian maps of deformations from time 2 to time 1 (column 1) and time 1 to time 2 (column 2) are superimposed on the target volumes. The products of Jacobian maps, shown in column 3, have values close to 1, suggesting inverse consistency.

3. Broit, C.: Optimal Registration of Deformed Images. PhD thesis, University of Pennsylvania (1981)
4. Christensen, G., Rabbitt, R., Miller, M.: Deformable templates using large deformation kinematics. *IEEE Transactions on Image Processing* **5**(10) (1996) 1435–1447
5. Brun, C., Lepore, N., Pennec, X., Chou, Y., Lopez, O., Aizenstein, H., Becker, J., Toga, A., Thompson, P.: Comparison of standard and Riemannian elasticity for tensor-based morphometry in HIV/AIDS. *International Conference on Medical Image Computing and Computer Assisted Intervention* (2007)
6. Pennec, X., Stefanescu, R., Arsigny, V., Fillard, P., Ayache, N.: Riemannian elasticity: A statistical regularization framework for non-linear registration. In: *International Conference on Medical Image Computing and Computer Assisted Intervention*. (2005) 943–950
7. Pennec, X.: Left-invariant riemannian elasticity: A distance on shape diffeomorphisms? *International Workshop on Mathematical Foundations of Computational Anatomy* (2006)

- 1–13
8. Bro-Nielsen, M., Gramkow, C.: Fast fluid registration of medical images. In: Visualization in Biomedical Computing. (1996) 267–276
 9. D’Agostino, E., Maes, F., Vandermeulen, D., Suetens, P.: A viscous fluid model for multimodal non-rigid image registration using mutual information. *Medical Image Analysis* **7** (2003) 565–575
 10. Le Guyader, C., Vese, L.: A combined segmentation and registration framework with a nonlinear elasticity smoother. *UCLA Computational and Applied Mathematics Report* 08-16 (2008)
 11. Lin, T., Lee, E.F., Dinov, I., Le Guyader, C., Thompson, P., Toga, A., Vese, L.: A landmark based nonlinear elasticity model for mouse atlas registration. *IEEE International Symposium on Biomedical Imaging* (2008) 788–791
 12. Haber, E., Modersitzki, J.: Numerical methods for volume preserving image registration. *Inverse problems, Institute of Physics Publishing* **20**(5) (2004) 1621–1638
 13. Haber, E., Modersitzki, J.: Image registration with guaranteed displacement regularity. *International Journal of Computer Vision* **71**(3) (2007) 361–372
 14. Yanovsky, I., Thompson, P., Osher, S., Leow, A.: Topology preserving log-unbiased nonlinear image registration: Theory and implementation. *IEEE Conference on Computer Vision and Pattern Recognition* (2007) 1–8
 15. Collignon, A., Maes, F., Delaere, D., Vandermeulen, D., Suetens, P., Marchal, G.: Automated multi-modality image registration based on information theory. In Bizais, Y., Barillot, C., Di Paola, R., eds.: *Information Processing in Medical Imaging*. Volume 3., Kluwer Academic Publishers, Dordrecht (1995) 264–274
 16. Viola, P., Wells, W.: Alignment by maximization of mutual information. *International Conference on Computer Vision* (1995) 16–23
 17. Negron-Marrero, P.: A numerical method for detecting singular minimizers of multidimensional problems in nonlinear elasticity. *Numerische Mathematik* **58**(1) (1990) 135–144
 18. Cachier, P., Bardinet, E., Dormont, D., Pennec, X., Ayache, N.: Iconic feature based nonrigid registration: The PASHA algorithm. *Computer Vision and Image Understanding* **89** (2003) 272–298
 19. Yanovsky, I., Thompson, P., Osher, S., Hua, X., Shattuck, D., Toga, A., Leow, A.: Validating unbiased registration on longitudinal MRI scans from the Alzheimer’s Disease Neuroimaging Initiative (ADNI). *IEEE International Symposium on Biomedical Imaging* (2008) 1091–1094
 20. Christensen, G., Johnson, H.: Consistent image registration. *IEEE Transactions on Medical Imaging* **20**(7) (2001) 568–582