



HAL
open science

Real-time visuomotor update of an active binocular head

Michael Sapienza, Miles Hansard, Radu Horaud

► **To cite this version:**

Michael Sapienza, Miles Hansard, Radu Horaud. Real-time visuomotor update of an active binocular head. [Research Report] RR-7682, 2012. inria-00608769v1

HAL Id: inria-00608769

<https://inria.hal.science/inria-00608769v1>

Submitted on 14 Jul 2011 (v1), last revised 28 Aug 2012 (v3)

HAL is a multi-disciplinary open access archive for the deposit and dissemination of scientific research documents, whether they are published or not. The documents may come from teaching and research institutions in France or abroad, or from public or private research centers.

L'archive ouverte pluridisciplinaire **HAL**, est destinée au dépôt et à la diffusion de documents scientifiques de niveau recherche, publiés ou non, émanant des établissements d'enseignement et de recherche français ou étrangers, des laboratoires publics ou privés.



INSTITUT NATIONAL DE RECHERCHE EN INFORMATIQUE ET EN AUTOMATIQUE

*Real-time 3D reconstruction and fixation with an
active binocular head*

Michael Sapienza, Miles Hansard, and Radu Horaud

N° 7682

July 2011

Domaine 4



*R*apport
de recherche

Real-time 3D reconstruction and fixation with an active binocular head

Michael Sapienza, Miles Hansard, and Radu Horaud

Domaine : Perception, cognition, interaction
Équipe-Projet PERCEPTION

Rapport de recherche n° 7682 — July 2011 — 22 pages

Abstract: In order for a binocular head to perform optimal 3D tracking, it should be able to verge its cameras actively, while maintaining geometric calibration. In this work we introduce a calibration update procedure, which allows a robotic head to simultaneously fixate, track, and reconstruct a moving object in real-time. The update method is based on a mapping from motor-based to image-based estimates of the camera orientations, estimated in an offline stage. Following this, a fast online procedure is presented to update the calibration of an active binocular camera pair. The proposed approach is ideal for active vision applications because no image-processing is needed at runtime for the scope of calibrating the system or for maintaining the calibration parameters during camera vergence. We show that this homography-based technique allows an active binocular robot to fixate and track an object, whilst performing 3D reconstruction concurrently in real-time.

Key-words: Real-time vision, Active binocular vision, Visual tracking, 3D reconstruction

Reconstruction 3D temps-réel et fixation avec un système binoculaire actif

Résumé : Afin qu'une tête binoculaire puisse effectuer le suivi optimal en 3D, elle devrait être en mesure de pointer ses caméras activement, tout en conservant l'étalonnage géométrique. Dans ce travail nous présentons une procédure de mise à jour de calibration qui permet à une tête robotique de fixer et de reconstruire simultanément, un objet en mouvement en temps réel. La méthode de mise à jour est basée sur une cartographie du moteur basé à base d'images. Les estimations des orientations appareil, estimée à un stade déconnecté. Suite à cela, une procédure rapide en ligne est présentée à mettre à jour l'étalonnage d'une paire de jumelles appareil actif. L'approche proposée est idéal pour les applications de vision active, car aucun traitement d'image est nécessaire à l'exécution de la portée de l'étalonnage du système ou pour maintenir les paramètres d'étalonnage lors de convergence caméra. Nous montrons que cette technique basée sur homographie permet un robot binoculaire active fixer et à suivre un objet, tout en effectuant simultanément la reconstruction 3D en temps réel.

Mots-clés : Vision temps-réel, vision binoculaire active, suivi visuel, reconstruction 3D

Contents

1	Introduction	4
1.1	Previous Work	5
1.2	Problem Definition	6
1.3	Main Contributions	7
2	Methods	8
2.1	Homography Estimation	8
2.2	Homography Analysis	8
2.3	Motor-Based Parametrization	9
2.4	Homography Synthesis	10
3	Experiments and Results	11
3.1	Robot Hardware	11
3.2	Calibration Procedure	12
3.3	Exploratory Analysis	13
3.4	Quantitative Evaluation	13
3.5	Target tracking and 3D reconstruction	16
4	Conclusion	19



Figure 1: The POPEYE active binocular robotic head (designed and built in the Institute for Systems & Robotics, University of Coimbra, Portugal). The binocular vergence is controlled by a pair of motors, one below each camera. The pan and tilt angles of the head are controlled by another pair of motors.

1 Introduction

The estimation of scene-structure from a binocular image pair is an important task in robot vision. Once the epipolar geometry between the two cameras is known, image-features can be matched more easily, and depth information can be recovered (Hartley and Zisserman, 2004). For an active binocular robot head, which continuously fixates a moving target, a real-time method for updating the relationship between the cameras is required. This will enable the robot to perform 3D reconstruction while actively examining different parts of the scene, or while tracking a moving object (Grosso and Tistarelli, 1995; Barreto et al, 2010). Furthermore, this online calibration update must be computationally efficient if it is to be used alongside other complex algorithms such as object tracking and 3D reconstruction.

POPEYE is an active binocular robot (POP Consortium, 2008), which reproduces the sensory configuration of the human head (Fig. 1). The orientation of the robot head (pan/tilt) is controlled by motors, as is the direction of the eyes (version/vergence). The robot can therefore direct its attention towards the source of an audio-visual stimulus in its surroundings using sensor fusion and tracking techniques (Bellotto and Hu, 2010). The advantage of an *active* vision system is that information about the environment can be gathered more efficiently, by appropriately re-orienting the cameras. Hence visual information

is combined with motor control, in a feedback loop, which enables the robot to react to a dynamic environment (Bajcsy, 1988).

1.1 Previous Work

In order to preserve the calibration of the stereo system after camera vergence, one could continually recalibrate the system. This would, however, be very difficult to perform in real-time. A more efficient method would be to calibrate the system once, and then to update this calibration as the cameras move. This technique was used in (Björkman and Eklundh, 2002), where the epipolar geometry was updated by extracting information from feature correspondences in the current images. This required an iterative approach to estimate the stereo-head geometric parameters, which is computationally expensive. Furthermore, such an approach ignores kinematic information that can be used to improve the real-time performance of the system. The problem was also tackled in (Hart et al, 2002) who developed an epipolar-kinematic model in which motor data is used to compute an updated representation of the epipolar geometry. The kinematics of the system are obtained by rotating the cameras and observing the relationship between the images of two views before and after the rotation. After this calibration procedure, the essential matrix (Hartley and Zisserman, 2004) can be updated, provided that the current settings of the camera motors are known. This approach allows computation of the essential matrix in real-time. Related methods can be used to coordinate an active camera with a static camera (Horaud et al, 2006).

The POPEYE robot belongs to a class of active binocular robot heads with very accurate motors (Shih et al, 1998; Aryananda and Weber, 2004; Beira et al, 2006; Miwa et al, 2002). Moreover, the design of the eye pan mechanical structures allows each camera position to be precisely adjusted to achieve close agreement between the optical and rotational centres of the cameras. This permits a direct approach to epipolar-update, as described in section 2. The accuracy and negligible backlash of the DC brushed motors ensures the repeatability of the new method, as demonstrated in section 3.

The present work is closely related to certain *autocalibration* procedures (Hartley, 1997; Ruf and Horaud, 1999; Knight and Reid, 2006), in which constrained movements are used to estimate the camera parameters. The aim of the present work is somewhat different; we estimate a direct mapping from motor-settings to image-transformations, without explicitly estimating the calibration parameters.

The paper is organized as follows. The problem definition and main contributions of this work are stated in sections 1.2 and 1.3. Sections 2.1, 2.2 and 2.4 describe the estimation, analysis and synthesis of homographies, respectively. The new method is based on the statistical model (3), which allows for uncertainty in the homography estimates, as defined in section 2.3. Section 3 describes the results of experiments using POPEYE. The conclusions of the work are stated in section 4.

1.2 Problem Definition

The problem to be solved is that of compensating for the effects of known camera-rotations on the images. This is important for both monocular and binocular tasks, as described below. The *monocular* geometry (which applies equally to the left and right cameras) will be described first.

The standard pinhole-camera model will be used to represent the imaging process. The scene and image points will be identified by homogeneous coordinates $\mathbf{X} \simeq (X, Y, Z, 1)^\top$ and $\mathbf{x} \simeq (x, y, 1)^\top$ respectively, where ‘ \simeq ’ indicates equality up to a non-zero scale factor. If the pose of the camera, with respect to the scene coordinate-system, is represented by the 3×3 rotation matrix \mathbf{R} and 3×1 translation-vector \mathbf{t} , then $\mathbf{x} \simeq \mathbf{A}(\mathbf{R}|\mathbf{t})\mathbf{X}$, where \mathbf{A} is the upper-triangular matrix that contains the intrinsic parameters (Hartley and Zisserman, 2004). Now consider two views, \mathcal{V} and \mathcal{V}_j , that differ by a rotation of the *single* camera described above. Specifically, suppose that the camera is aligned with the scene-coordinate system, and that image-points $\mathbf{x} \in \mathcal{V}$ and $\mathbf{x}_j \in \mathcal{V}_j$ are observed before and after a vergence rotation (monocular pan) of angle θ_j . It follows that $\mathbf{x} \simeq \mathbf{A}(\mathbf{I}|\mathbf{0})\mathbf{X}$ and $\mathbf{x}_j \simeq \mathbf{A}(\mathbf{R}_j|\mathbf{0})\mathbf{X}$ and therefore

$$\mathbf{x}_j \simeq \mathbf{H}_j \mathbf{x} \quad \text{where} \quad \mathbf{H}_j \simeq \mathbf{A} \mathbf{R}_j \mathbf{A}^{-1}. \quad (1)$$

The full-rank 3×3 matrix \mathbf{H}_j represents the *homography* (Hartley and Zisserman, 2004) that maps view \mathcal{V} to view \mathcal{V}_j , as shown in Fig. 2. The matrix \mathbf{H}_j will be analysed in section 2.2.

Now, in the *binocular* case, let \mathbf{x}_ℓ and \mathbf{x}_r be corresponding points in the left and right images. The epipolar geometry of the binocular system is expressed by the constraint $\mathbf{x}_r^\top \mathbf{F} \mathbf{x}_\ell = 0$ where \mathbf{F} is the *fundamental matrix* (Hartley and Zisserman, 2004). If the cameras are rotated, by angles $\theta_{\ell j}$, $\theta_{r j}$, then the new coordinates $\mathbf{x}_{\ell j}$, $\mathbf{x}_{r j}$ will not be compatible with \mathbf{F} . However, if homographies $\mathbf{H}_{\ell j}$ and $\mathbf{H}_{r j}$ are available, then the points can be transformed *back* to the coordinate system of \mathbf{F} , so that $(\mathbf{H}_{r j}^{-1} \mathbf{x}_{r j})^\top \mathbf{F} (\mathbf{H}_{\ell j}^{-1} \mathbf{x}_{\ell j}) = 0$. Alternatively, \mathbf{F} itself can be transformed, so that the general epipolar constraint is

$$\mathbf{x}_{r j}^\top \mathbf{F}_j \mathbf{x}_{\ell j} = 0 \quad \text{where} \quad \mathbf{F}_j = \mathbf{H}_{r j}^{-\top} \mathbf{F} \mathbf{H}_{\ell j}^{-1}. \quad (2)$$

The cases $\mathbf{H}_{\ell 0} = \mathbf{I}$ and $\mathbf{H}_{r 0} = \mathbf{I}$ are defined so that $\mathbf{F}_0 = \mathbf{F}$ is the original fundamental matrix. The original problem, of compensating for binocular vergence, has now been reduced to that of estimating the homographies $\mathbf{H}_{\ell j}$ and $\mathbf{H}_{r j}$.

There are two possible ways to estimate these matrices. This is an essentially monocular task, and so the left/right subscripts will now be suppressed. In the **image-based** method, \mathbf{H}_j is estimated from $1 \leq k \leq N$ point-correspondences $\mathbf{x}_k \leftrightarrow \mathbf{x}_{jk}$. This method is *accurate*, but it is also *slow*, as an additional correspondence problem must be solved after every camera movement. Alternatively, in the **motor-based** method, the current motor-angle θ_j is substituted into the underlying rotation matrix \mathbf{R}_j which appears in (1). This method is *fast*, but the results are *inaccurate*, owing to residual misalignment of the optical and rotational centres (see sec. 2.3).

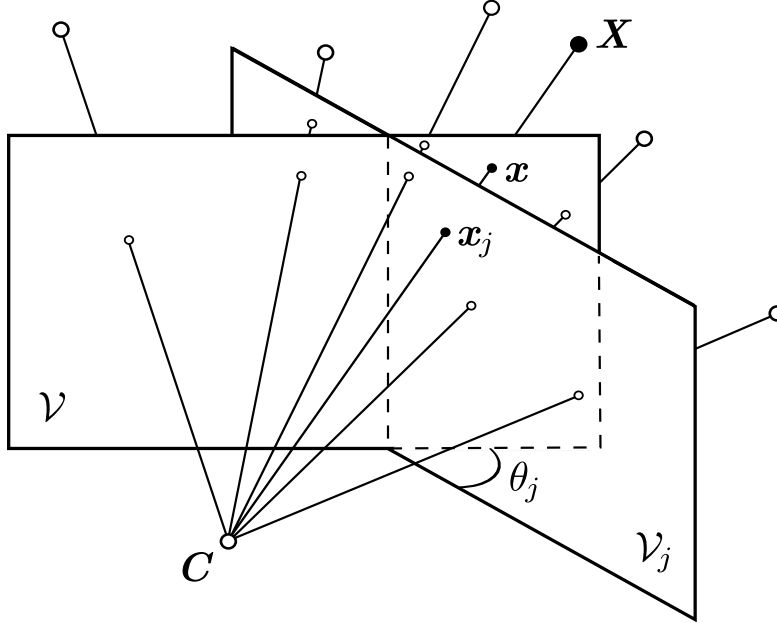


Figure 2: A camera samples the bundle of rays that pass through the optical centre C . Two different views, separated by a rotation of θ_j , are indicated by the planes \mathcal{V} and \mathcal{V}_j . Corresponding points \mathbf{x} and \mathbf{x}_j , which are images of \mathbf{X} , are related by a projective transformation \mathbf{H} of the projective space P^2 .

1.3 Main Contributions

This paper shows that the image-based and motor-based approaches, as described above, can be combined. The resulting method has the accuracy of the former approach, as well as the speed of the latter. An outline of the new method is given below.

Firstly, in an offline calibration procedure, the image-based method is used to estimate the homographies \mathbf{H}_j that are induced by a set of motor-angles θ_j , where $1 \leq j \leq M$, as described in section 2.1. Each *estimated* homography determines another angle ϕ_j , which is extracted from the matrix \mathbf{H}_j , as described in section 2.2. The image-based and motor-based angles are theoretically equal, $\phi_j = \theta_j$. In practice, however, there is a systematic difference between these parameters, owing to the optical and mechanical effects described in section 2.3. These systematic effects can be represented by a statistical model f , and a vector of parameters $\boldsymbol{\eta}$, such that

$$\phi \approx f(\theta, \boldsymbol{\eta}). \quad (3)$$

If the parameters can be learned, then a homography-angle ϕ can be predicted from *any* current motor-angle θ , as described in section 2.3. The corresponding homography \mathbf{H}_θ can then be quickly constructed following a real-time online

procedure described in section 2.4. This method is accurate, because the predicted homography \mathbf{H}_θ must be compatible with the original \mathbf{H}_j at all fitted values $\theta = \theta_j$, where j indexes the M views that are used to estimate the model (3).

In summary, the main contribution of this paper is a novel method for real-time epipolar geometry update, which is applied to an active binocular robotic head. We demonstrate the validity of this **homography-based** method on the POPEYE robot, which can simultaneously fixate an object, track it over time, and perform 3D reconstruction in real-time.

2 Methods

The update-procedure will now be presented, in order of execution. Most importantly, section 2.3 introduces a model and solution for the angle mapping (3).

2.1 Homography Estimation

The initial homographies \mathbf{H}_j are estimated by the standard *direct linear transformation* algorithm (Hartley and Zisserman, 2004). Each homography has eight degrees of freedom (3×3 minus scale). This means that $k = 1, \dots, N$ correspondences $\mathbf{x}_k \leftrightarrow \mathbf{x}_{jk}$ are required, where $N \geq 4$. It can be shown (Hartley and Zisserman, 2004) that each correspondence defines a pair of homogeneous constraints

$$\begin{pmatrix} \mathbf{0}_3^\top & -w_k \mathbf{x}_{jk}^\top & y_k \mathbf{x}_{jk}^\top \\ w_k \mathbf{x}_{jk}^\top & \mathbf{0}_3^\top & -x_k \mathbf{x}_{jk}^\top \end{pmatrix} \mathbf{h}_j = \mathbf{0}_2 \quad (4)$$

where $\mathbf{x}_k = (x_k, y_k, w_k)^\top$, $\mathbf{h}_j = (H_j^{11}, H_j^{12}, \dots, H_j^{33})^\top$, and $\mathbf{0}_L$ is the column-vector of L zeros. The N instances of the 2×9 matrix on the left of (4) are stacked to form a single $2N \times 9$ matrix \mathbf{G}_j . A solution for \mathbf{H}_j can then be obtained from the right singular-vector of \mathbf{G}_j that corresponds to the smallest singular value.

2.2 Homography Analysis

Recall from (1) that $\mathbf{H}_j \simeq \mathbf{A} \mathbf{R}_j \mathbf{A}^{-1}$, where \mathbf{R}_j is a rotation matrix. This means that the homography \mathbf{H}_j is a *conjugate rotation*, having the same eigenvalues as \mathbf{R}_j (Hartley, 1997). Furthermore, \mathbf{H}_j can be decomposed as

$$\mathbf{H}_j \simeq \mathbf{U} \mathbf{D}_j \mathbf{U}^{-1} \quad (5)$$

where \mathbf{D}_j is a diagonal matrix of eigenvalues, and \mathbf{U}_j is a matrix of eigenvectors. The decomposition has the following structure (Hartley, 1997; Ruf and Horaud,

1999), which involves a complex-conjugate pair of eigenvalues:

$$\mathbf{D}_j \simeq \text{diag}(\lambda_j, \lambda_j^*, 1) \quad \text{where} \quad \lambda_j = \exp(i\phi_j) \quad (6)$$

$$\text{and} \quad \mathbf{U} = (\mathbf{u}, \mathbf{v}, \mathbf{w}). \quad (7)$$

The angle ϕ_j and axis \mathbf{w} correspond to the rotation \mathbf{R}_j . The complex vectors \mathbf{u} and \mathbf{v} represent the *circular points* in the plane orthogonal to the rotation axis (Hartley and Zisserman, 2004). Under pure rotations, the axis of rotation is fixed, and therefore the matrix \mathbf{U} remains unchanged. In practice, there are M eigenvector matrices \mathbf{U}_j , which are only approximately equal, owing to misalignment of the optical and rotational centres. Thus, a synthesis matrix $\bar{\mathbf{U}}$ may be chosen as that associated with the largest motor-angle θ_j , or estimated with a suitable averaging procedure in an offline learning stage.¹ Following this, the pre-computed eigenvector matrix $\bar{\mathbf{U}}$ will be used in section 2.4 for homography synthesis in a real-time online procedure, since only λ_j needs to be computed at runtime. The angle ϕ can be computed from the motor-rotation θ as described in the following section.

2.3 Motor-Based Parametrization

This section addresses the chief issue, which is the relationship (3) between the motor parameter θ , and the homography parameter ϕ . The model f in (3) must account for two systematic effects. Firstly, the existence of a ‘pinhole’ optical centre is only an approximation for real cameras. Secondly, the approximate optical centre may not coincide with the rotational centre of the system. This means that camera rotations will be accompanied by small translations (Hayman and Murray, 2003). It is important to note that these effects need only be modelled over a limited range of angles, as determined by the mechanics of the system. Furthermore, this range has a natural origin, which corresponds to the straight-ahead camera position. All motor-counts θ are specified in relation to this origin.

The preceding considerations suggest the zero-offset linear model $\phi \approx \eta\theta$, which will be experimentally validated in section 3. This model states that the M available angle-pairs $\{\theta_j, \phi_j\}$ are related by

$$\phi_j = \eta\theta_j + \epsilon_j \quad \text{where} \quad 1 \leq j \leq M. \quad (8)$$

The random errors ϵ_j are due to the optical and mechanical effects described above, as well as to lens distortion and feature mis-localization. The unknown parameter η can be estimated, given one or more angle-pairs.

The estimation procedure requires the definition of a *distance metric* in which the observed discrepancies $\delta = \phi - \eta\theta$ can be minimized. Two possible metrics are $|\delta|_R \in [0, \infty]$, the standard Euclidean metric on R^1 , and $|\delta|_S \in [0, 1]$,

¹The U_j matrices were combined by computing $\bar{\mathbf{u}}$ and $\bar{\mathbf{w}}$ as the leading eigenvectors of $\sum_j \bar{\mathbf{u}}_j \bar{\mathbf{u}}_j^T$ and $\sum_j \bar{\mathbf{w}}_j \bar{\mathbf{w}}_j^T$, respectively (with $\bar{\mathbf{v}} = \bar{\mathbf{u}}^*$)

an angular metric on the circle S^1 . These are respectively defined as

$$|\delta|_R = \sqrt{\delta^2} \quad \text{and} \quad |\delta|_S = \frac{1}{2}(1 - \cos \delta). \quad (9)$$

The Euclidean metric is not suitable for general angular problems because, for example, $|\delta|_R \neq |\delta + 2\pi|_R$. However, using the Taylor approximation $\cos(\delta) = 1 - \frac{1}{2}\delta^2 + \mathcal{O}(\delta^4)$, it is clear that

$$|\delta|_S = \frac{1}{4}|\delta|_R^2 + \mathcal{O}(\delta^4). \quad (10)$$

Hence, for small values of δ , it is possible to use $|\delta|_R^2$ rather than $|\delta|_S$. This is important, because the Euclidean metric is much easier to work with. The approximation can be quantified by the relative error

$$E_{RS}(\delta) = \frac{\text{abs}(|\delta|_S - \frac{1}{4}|\delta|_R^2)}{|\delta|_S}. \quad (11)$$

The *maximum* relative error $E_{RS}(\phi_j - \theta_j)$ is 0.12% for the data-set used here, and so the Euclidean metric will be used. It will be demonstrated in section 3.3 that the results of using $|\delta|_S$ are, for practical purposes, identical.

The minimum of the Euclidean error can be found by setting the derivative $d/d\eta$ of $\frac{1}{4}\sum_j^N |\phi_j - \eta\theta_j|_R^2$ to zero. This leads to the well-known estimate for the slope of a regression-line through the origin:

$$\hat{\eta} = \frac{\sum_j^M \theta_j \phi_j}{\sum_j^M \theta_j^2}. \quad (12)$$

If the errors ϵ_j in (8) are normally distributed, $\text{pr}(\epsilon_j) \propto \exp(-\frac{1}{2}\epsilon_j^2)$, then $\hat{\eta}$ in (12) is also the Maximum Likelihood estimate of the underlying parameter η .

It is now straightforward, given *any* motor angle θ , to compute a *predicted* homography angle

$$\phi = \hat{\eta}\theta \quad (13)$$

by analogy with the original model (8). This prediction, given the estimate $\hat{\eta}$, does not involve any other computations.

2.4 Homography Synthesis

Suppose that a homography angle ϕ has been predicted from a motor-angle θ , using the fitted model (13). It is then possible, by inverting the procedure of section 2.2, to create a new homography \mathbf{H} , as noted in (Hartley and Zisserman, 2004; Knight and Reid, 2006). First, by analogy with (6), the eigenvalue matrix is synthesized:

$$\mathbf{D} = \text{diag}(\lambda, \lambda^*, 1) \quad \text{where} \quad \lambda = \exp(i\phi), \quad (14)$$

and λ, λ^* are complex conjugates. The coordinates \mathbf{u} and \mathbf{v} of the circular points (7) are independent of the rotation angle. It follows that, by analogy

Algorithm 1 Offline parameter estimation

1. Estimate homographies \mathbf{H}_j induced by a set of motor-angles θ_j (section 2.1).
 2. Eigendecompose \mathbf{H}_j to obtain (i) eigenvalues λ_j , from which the image-based rotation ϕ_j is found, and (ii) a matrix of eigenvectors $\bar{\mathbf{U}}$ (section 2.2).
 3. Estimate parameters $\hat{\eta}$ relating image and motor-based rotation angles using (12).
-

Algorithm 2 Online epipolar geometry update

1. Calculate predicted homography angle ϕ using (13).
 2. Create new homography \mathbf{H} from synthesized eigenvector matrix $\bar{\mathbf{U}}$ and eigenvalue matrix \mathbf{D} as in (14).
 3. Update fundamental matrix \mathbf{F}_j using the homographies $\mathbf{H}_{\ell j}$ and \mathbf{H}_{rj} representing the rotation of both cameras using (2).
-

with (5), the synthesis matrix of eigenvectors $\bar{\mathbf{U}}$ can be combined with \mathbf{D} as follows,

$$\mathbf{H} = \bar{\mathbf{U}} \mathbf{D} \bar{\mathbf{U}}^{-1} \quad (15)$$

which gives the estimated homography.

The above procedure is performed separately for the left and right cameras, so that $\mathbf{H}_{\ell j}$ and \mathbf{H}_{rj} are obtained from $\theta_{\ell j}$ and θ_{rj} , respectively. It is emphasized that only (13,14 & 15) need to be computed at run-time, with $\bar{\mathbf{U}}$ fixed in advance. The current fundamental matrix \mathbf{F}_j is then obtained from $\mathbf{H}_{rj}^{-\top} \mathbf{F} \mathbf{H}_{\ell j}^{-1}$, as in (2). Both the offline and online parameter estimation procedures are detailed in algorithms 1 and 2 respectively.

3 Experiments and Results

In order to evaluate the new approach, a sequence of tests were carried out using the POPEYE robot, as described in sections 3.1 and 3.2. The experiments were set in a laboratory environment in which the POPEYE head was placed in a position to best view any surrounding activity. The resulting data is explored in section 3.3, and the assumptions of section 2 are validated. The performance of the new method is evaluated in 3.4, using an image-based error measure.

3.1 Robot Hardware

The robot's vision system consists of two PointGrey colour cameras, which provide images of size 1024×768 . The POPEYE head has four rotational degrees of freedom, but only the left/right *vergence* motors are used for the experimental analysis. The rotations are performed by DC brushed motors, which are controlled by discrete (and repeatable) angle-steps. The mechanical system also provides a reference position (straight ahead).

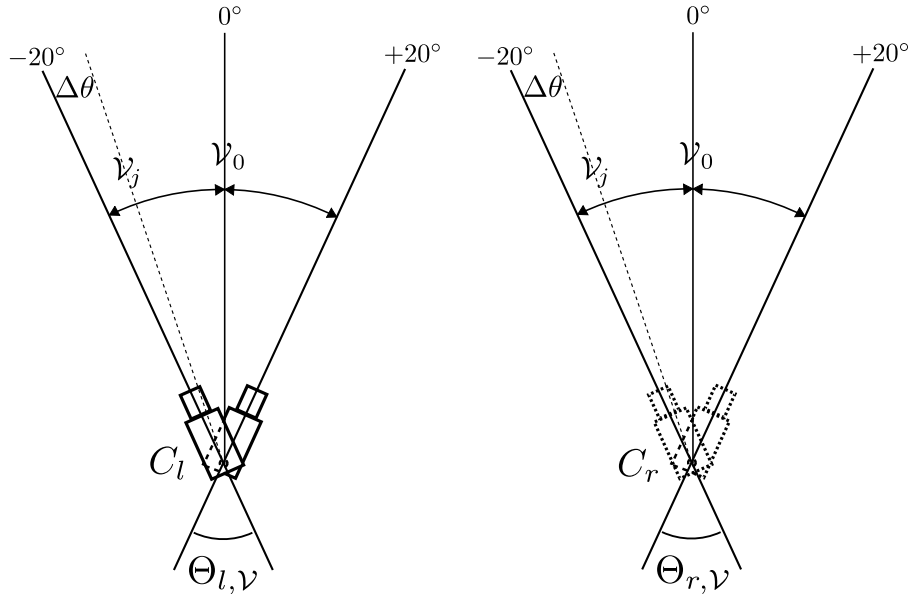


Figure 3: An illustration of the motor-camera calibration procedure. For each camera, a set of images are extracted which are representative of the viewable area. The relationship between the motor-angle θ and the homography-angle ϕ is modelled by the method described in section 2.3.

3.2 Calibration Procedure

A practical angular range of operation was chosen to be $\pm 20^\circ$ around the reference position, as shown in Fig. 3. This range was split into a discrete set of nine views \mathcal{V}_j , each separated by $\Delta\theta = 5^\circ$. The resulting images are representative of the viewable area of the scene. Textured cards were fixed to the facing furniture, containing stable calibration features. Each camera was rotated in turn by $\Delta\theta$ over the whole angular range of operation, at each step taking a snapshot of the viewable area. For each view, ten evenly distributed feature-points were matched and verified by standard methods (Hartley and Zisserman, 2004).

The homography matrices mapping each view \mathcal{V}_j to the fronto-parallel position \mathcal{V} were then estimated, using the method of section 2.1. The eigen-decomposition of 2.2 was then used to extract the homography angle ϕ_j corresponding to each motor angle θ_j . The linear model f , that characterizes the relationship between the motor-angle θ and the homography-angle ϕ , was then estimated by the method of section 2.3.

Three calibration runs were performed for each of the two cameras, giving a total of six data-sets. Note that the scene-structure is of no particular importance in these experiments; each image-point could represent *any* scene-point on the corresponding ray (as indicated in Fig. 2). Hence the results generalize immediately to any scene.

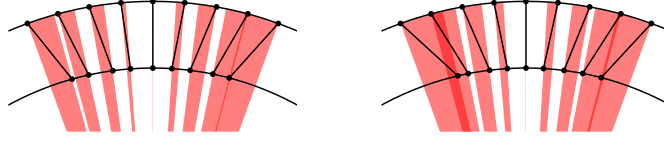


Figure 4: Visualization of the relationship between ϕ_j (inner points) and θ_j (outer points) for the left and right cameras. The connecting lines would be purely radial if all $\{\theta_j, \phi_j\}$ pairs were equal. The area of each translucent sector is proportional to the corresponding angular discrepancy $|\phi_j - \theta_j|$.

3.3 Exploratory Analysis

The first task is to examine the relationship between the measured motor angles θ_j and the estimated homography angles ϕ_j . The mean absolute discrepancy $|\theta_j - \phi_j|$ is 2.92° , with a standard deviation of 1.85° . The maximum absolute discrepancy is 6.87° . The data from the first trial are plotted in Fig. 4. It can be seen that the discrepancy tends to increase for more extreme views, in agreement with the model $\phi \approx \eta\theta$ in (8).

The data can now be used to validate the quadratic approximation $|\delta|_R$ of the angular error $|\delta|_S$ in (9). Note that the latter is a data-dependent sum of $j = 1, \dots, M$ cosinusoids, $\frac{1}{2}(1 - \cos(\phi_j - \eta\theta_j))$. The small range of the angular errors means that there is no significant difference between the minima of the two metrics, as shown in Fig. 5. The optimum η for the angular error (found by numerical minimization) differs from the regression estimate $\hat{\eta}$ in (12) by 1.9×10^{-8} .

Having validated the error-metric, the adequacy of the simple model $\phi = \eta\theta + \epsilon$ in (8) must also be confirmed. This can be done by plotting the *predicted* values $\phi_\theta = \hat{\eta}\theta$ in the same form as the *observed* values in Fig. 4. It can be seen from Fig. 6 that, with respect to the predicted values, there is no systematic pattern in the residuals. This indicates that the linear model is adequate.

Lastly, the validity of the synthetic homographies can be checked visually, in the actual images. This is done by synthetically un-rotating the robot's current view, based on the known motor angles and fitted models, as illustrated in Fig. 7(a)–(c).

3.4 Quantitative Evaluation

Consider the views \mathcal{V} and \mathcal{V}_j , separated by an angle θ_j and related by homography \mathbf{H}_j . Recall that point \mathbf{x}_k in \mathcal{V} is mapped to point \mathbf{x}_{jk} in \mathcal{V}_j as $\mathbf{x}_{jk} \simeq \mathbf{H}_j \mathbf{x}_k$ (1). The error of each mapping \mathbf{H}_j will now be evaluated over the N point-pairs in each data-set. The points are subject to errors in both images, and so the *symmetric transfer error* (Hart et al, 2002) is used:

$$E^2(\mathbf{H}_j) = \frac{1}{2N} \sum_{k=1}^N \left(d^2(\mathbf{x}_k, \mathbf{H}_j^{-1} \mathbf{x}_{jk}) + d^2(\mathbf{x}_{jk}, \mathbf{H}_j \mathbf{x}_k) \right). \quad (16)$$

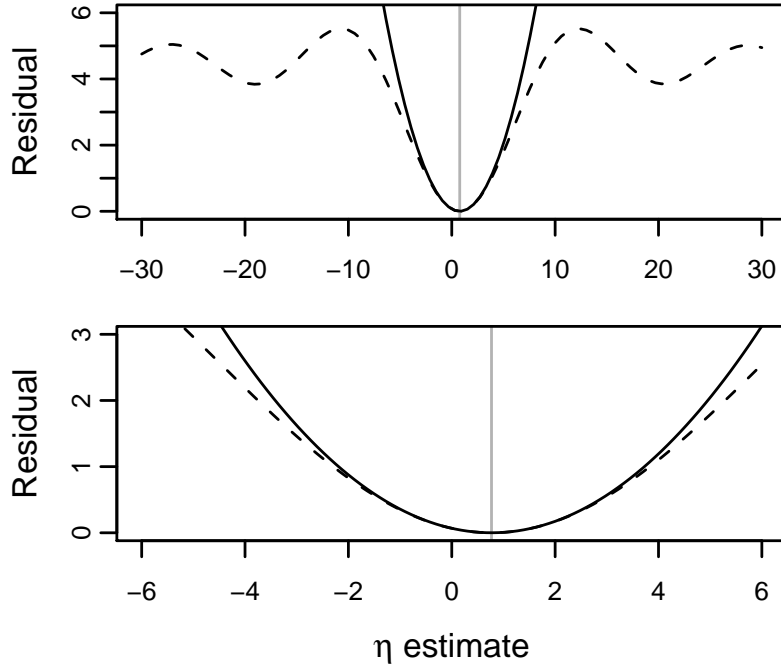


Figure 5: Comparison of the angular (dashed) and Euclidean (solid) metrics (9), on the actual data-set. The upper plot shows periodic form of the angular error. The global minimum is well-approximated by a parabola, as in (10). The least-squares estimate (12) is the minimum of the parabola, indicated by the vertical line. For the present data, the difference between the two metrics is insignificant. The lower plot shows a magnified view.

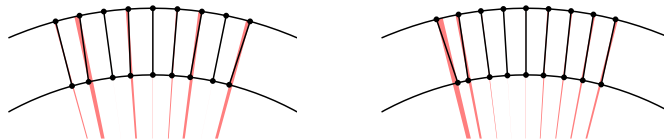


Figure 6: Visualization of the relationship between ϕ_j (inner points) and $\phi = \hat{\eta}\theta_j$ (outer points) for the left and right cameras. The angular errors (represented by the translucent sectors) are greatly reduced with respect to those in Fig. 4 (note that the inner points, representing ϕ_j , are unchanged).



(a) A binocular image pair taken from the fronto-parallel configuration (left camera - right camera).



(b) The left and right cameras are rotated by -10 and $+12$ degrees respectively, and the homographies representative of these rotations are calculated.



(c) The estimated homographies are then used to un-rotate the current images to the original fronto-parallel views (note: the field of view is truncated).

Figure 7: Visual validation of the synthesized homographies.

Here, for example, $d^2(\mathbf{x}_{jk}, \mathbf{H}_j \mathbf{x}_k)$ is the squared Euclidean image-distance between the measured point \mathbf{x}_{jk} in \mathcal{V}_j and the point $\mathbf{H}_j \mathbf{x}_k$ that is mapped from the reference view \mathcal{V} .

This criterion will be used to quantitatively evaluate the accuracy of the synthesized homographies that were obtained from the motor-camera model. Matched points were extracted from the three data-sets, with left and right views spanning $\pm 20^\circ$ of pan. For each set of images, the motor-camera calibration procedure was carried out as described in section 3.2. The estimated linear relationship between the homography-angles ϕ_j and the motor angles θ_j can be seen in Fig. 8.

The model parameters were then used to synthesize the homographies needed to map the scene points from the fronto-parallel images \mathcal{V} to the rotated views \mathcal{V}_j at angles θ_j . The actual and predicted scene points were then compared in terms of symmetric transfer error, as defined in (16). The RMS transfer error, over all six data sets,² was 2.09 pixels (in the 1024×768 images). The maximum and standard deviation of the transfer errors were 3.85 and 0.86 pixels, respectively. The plots in Fig. 9 show a breakdown of the error across the two cameras, nine angles and three experimental trials.

3.5 Target tracking and 3D reconstruction

In order to validate the homography-based method in a real-world setting, the algorithm was used to extend the capabilities of the POPEYE robot by allowing sparse 3D reconstruction during camera vergence movements. Whereas previously the cameras of the robot were static and the viewable area constrained to the initial calibration position of the cameras, it is now possible to allow the cameras to move and verge on a target of interest whilst maintaining its calibrated state. A simple gaze control feedback algorithm was implemented to keep each camera centred on a target of interest as it moved. In this scenario, the robot was placed in a room and its task was to keep track of a human face whilst performing sparse 3D reconstruction of this area of interest.

The possible movements allowed by the binocular robot are horizontal head pan rotation, a vertical tilt movement, and independent pan movements for the stereo cameras. The camera pan movements are considered to be independent and we consider the task of bringing the target position to the center of the cameras as a monocular tracking task, unlike the tracking in (Pagel et al, 1998), in which the camera movements were coupled. This leads to a simple update procedure to bring the object of interest to the centre of each camera:

$$\delta\theta \propto \arctan\left(\frac{\delta_x}{f_x}\right) \quad \delta\psi \propto \arctan\left(\frac{\delta_y}{f_y}\right) \quad (17)$$

where $\delta\theta$ and $\delta\psi$ are the damped pan and tilt eye motor rotations necessary to keep track of a moving target under stability. The damping factor for each motor ξ was found by giving a step-input in the form of a fixed face target to

²The statistics were computed after excluding the ‘perfect’ values at $\theta = 0$.

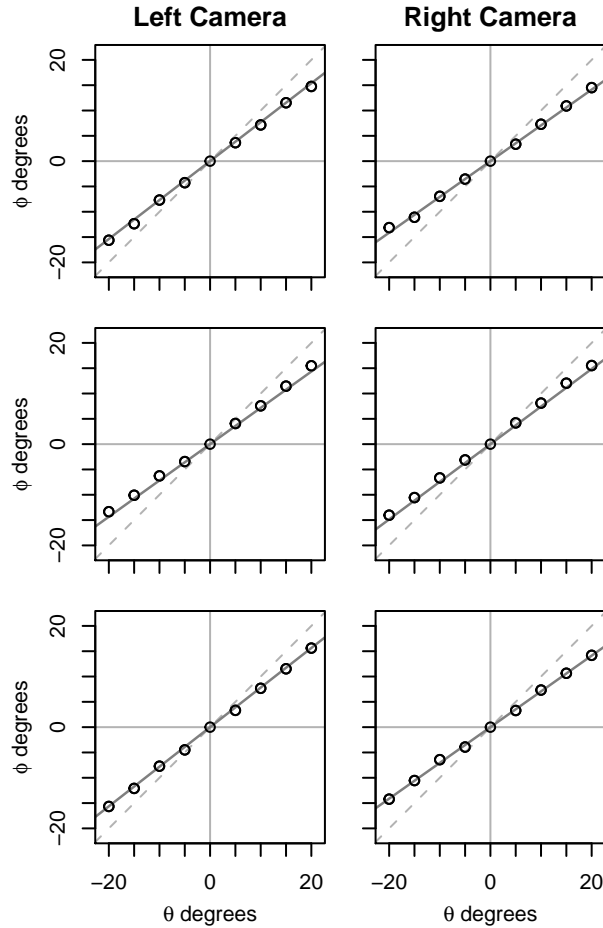


Figure 8: Homography-angles ϕ_j plotted as a function of the motor-angles θ_j . Three trials are shown (rows) for each camera (columns). The least-squares regression model is drawn through the data points. It can be seen that the homography/motor relationship is approximately linear, with a slope $\eta < 1$. The dashed line, for comparison, has unit slope.

the active head. The motor response was plotted for varying ξ in Fig. 10, and the parameters close to critical damping were chosen.

The commonly used face detection algorithm by Viola and Jones (2004) was used to return the position of a single face in each of the camera images. Feature points within this face area were found using an interest point detector (Harris and Stephens, 1988). A more recent method inspired by human visual attention (Frintrop and Jensfelt, 2008) can easily be incorporated to determine a region of interest in the image. The detected feature points were matched after limiting

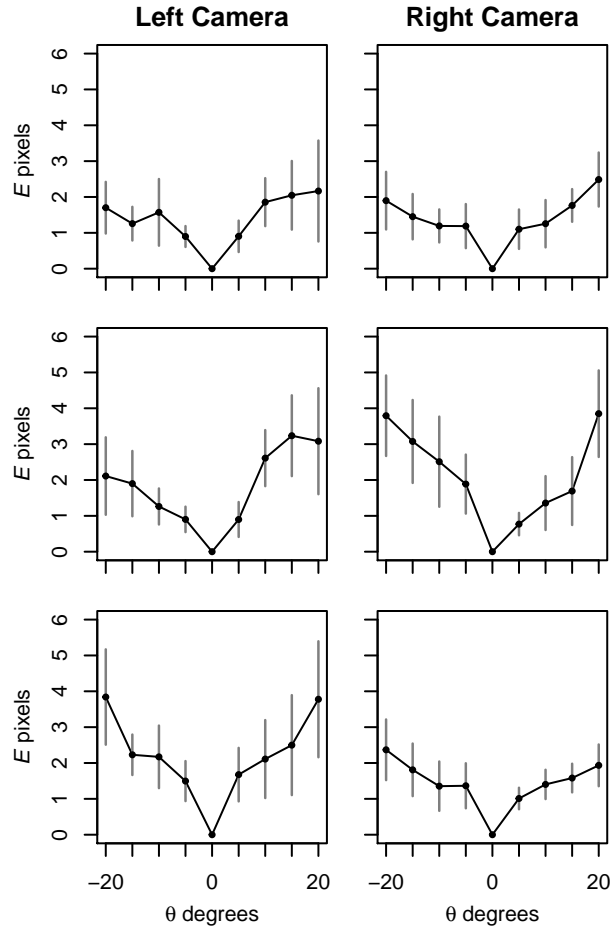


Figure 9: Symmetric transfer error (16) as a function of the homography angle θ_j (in images of size 1024×768). Three trials are shown (rows) for each camera (columns), as in Fig. 8. The vertical bars indicate the spread $\pm\sigma$ of the errors around the corresponding mean. Note that $\mathbf{H}_0 = \mathbf{I}$, by definition, and so there is no error at $\theta = 0$.

the search-space, for each point, to a region around the conjugate epipolar line. The matched points were then triangulated and plotted in euclidean space as shown in Fig. 11(a)–(c). The complete system runs in real-time (approx. 6fps), with all image-processing implemented on standard PC hardware. A demonstration of the system in operation can be seen in the attached multimedia file, or by visiting: <http://www.youtube.com/watch?v=jcIK8AMoejo>.

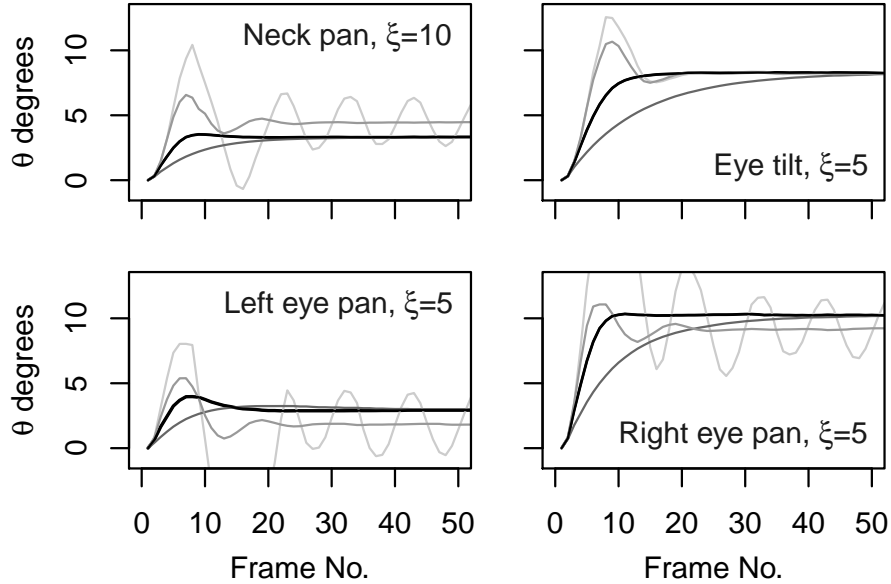
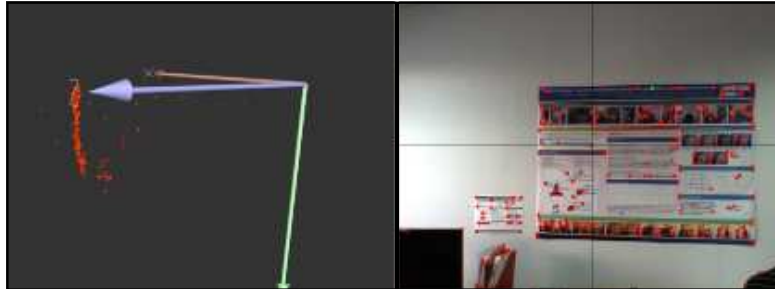


Figure 10: Response of the active binocular head motors to a step input. A static face was detected and the cameras rotated to fixate on the face. The damping factor was tuned so as to give a fast rise-time with minimal overshoot.

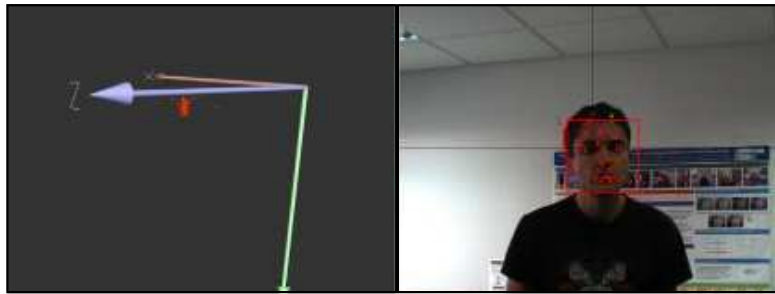
4 Conclusion

The results described in section 3.4 show that the new method of homography-generation is sufficiently accurate for practical use. For example, the method can be used to predict the coordinates of image-features, after controlled rotations of the cameras. The method is also useful for binocular vision, in which the fundamental matrix is updated as described in section 1.2. Furthermore, the new method is also fast, because the mapping from motor settings to image transformations is only estimated once. No additional point-correspondences are needed at run-time, and so computationally expensive feature-extraction and matching is avoided. The methods described here have enabled active tracking and image-stabilization to be performed in real-time by the POPEYE robot.

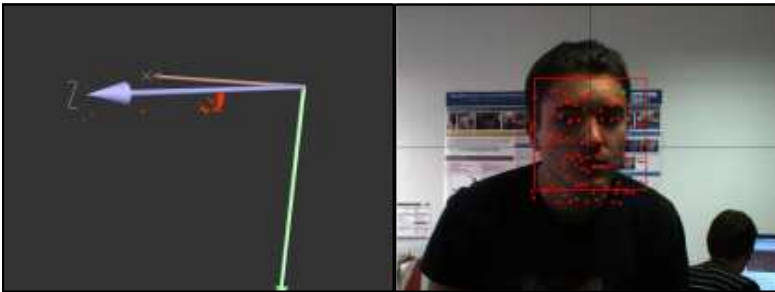
Future work will consider more complicated models for the mapping $\phi \approx f(\theta, \boldsymbol{\eta})$ which relates the motor and homography angles (3). It is expected that the method can be extended, in this way, to systems that have poor alignment between the optical and rotational centres. Finally, the idea of estimating the relationship between control-based and image-based parameters could be applied to other visual processes, such as active zoom.



(a) A snapshot of the sparse reconstruction (left) of the plane formed by a textured poster (right) fixed to the wall of the lab.



(b) The active head has detected a face and begins to track its movement whilst reconstructing matched points in this region of interest.



(c) As the target moves closer to the camera, the vergence angle between the cameras is updated to continually maintain fixation.

Figure 11: A 3D viewer (left) and the image captured from the left camera of the binocular stereo pair (right). In all three camera images, the matched points (red dots) are plotted in euclidean space and seen with the 3D viewer, which is updated in real-time. The motion of the head, for example between 11(b) and 11(c) is well reconstructed despite the camera movement and varying vergence angle.

References

- Aryananda L, Weber J (2004) Mertz: a quest for a robust and scalable active vision humanoid head robot. In: Proc. IEEE/RAS Int. Conf. on Humanoid Robots, pp 513–532
- Bajcsy R (1988) Active perception. Proc IEEE 76(8):996–1005
- Barreto J, Perdigo L, Caseiro R, Araujo H (2010) Active stereo tracking of $N \leq 3$ targets using line scan cameras. IEEE Trans on Robotics 26(3):442–457
- Beira R, Lopes M, Praga M, Santos-Victor J, Bernardino A, Metta G, Becchi F, Saltaren R (2006) Design of the robot-cub (icub) head. In: Proc. IEEE Int. Conf. on Robotics and Automation, pp 94–100
- Bellotto N, Hu H (2010) Computationally efficient solutions for tracking people with a mobile robot: an experimental evaluation of bayesian filters. Autonomous Robots 28:425–438
- Björkman M, Eklundh J (2002) Real-time epipolar geometry estimation of binocular stereo heads. IEEE Trans on Pattern Analysis and Machine Intelligence 24(3):425–432
- Frintrop S, Jensfelt P (2008) Active gaze control for attentional visual SLAM. In: Proc. IEEE Int. Conf. Robotics and Automation, pp 3690–3697
- Grosso E, Tistarelli M (1995) Active/dynamic stereo vision. IEEE Trans on Pattern Analysis and Machine Intelligence 17(9):868–879
- Harris C, Stephens M (1988) A Combined Corner and Edge Detector. In: Proc. 4th Alvey Vision Conference, pp 147–151
- Hart J, Scassellati B, Zucker S (2002) Epipolar geometry for humanoid robotic heads. In: Proc. 7th Int. Workshop on Advanced Motion Control, pp 567–572
- Hartley R (1997) Self-calibration of stationary cameras. International Journal of Computer Vision 22(1):5–23
- Hartley R, Zisserman A (2004) Multiple view geometry in computer vision, 2nd edn. Cambridge University Press
- Hayman E, Murray D (2003) The effects of translational misalignment when self-calibrating rotating and zooming cameras. IEEE Trans on Pattern Analysis and Machine Intelligence 25(8):1015–1020
- Horaud R, Knossow D, Michaelis M (2006) Camera cooperation for achieving visual attention. Machine Vision and Applications 16(6):330–342
- Knight J, Reid I (2006) Automated alignment of robotic pan-tilt camera units using vision. International Journal of Computer Vision 68(3):219–237

- Miwa H, Okuchi T, Takanobu H, Takanishi A (2002) Development of a new human-like head robot we-4. In: Proc. IEEE/RSJ Int. Conf. on Intelligent Robots and Systems, pp 2443–2448
- Pagel M, Mäel E, von der Malsburg C (1998) Self calibration of the fixation movement of a stereo camera head. *Autonomous Robots* 5:355–367
- POP Consortium (2008) Perception On Purpose, EC Project FP6-IST-2004-027268. <http://perception.inrialpes.fr/POP/>
- Ruf A, Horaud R (1999) Visual servoing of robot manipulators Part I: Projective kinematics. *International Journal of Robotics Research* 18(11):1101–1118
- Shih SW, Hung YP, Lin WS (1998) Calibration of an active binocular head. *IEEE Trans on Systems, Man, and Cybernetics Part A:Systems and Humans* 28(4):426–442
- Viola P, Jones MJ (2004) Robust real-time face detection. *International Journal of Computer Vision* 57:137–154



Centre de recherche INRIA Grenoble – Rhône-Alpes
655, avenue de l'Europe - 38334 Montbonnot Saint-Ismier (France)

Centre de recherche INRIA Bordeaux – Sud Ouest : Domaine Universitaire - 351, cours de la Libération - 33405 Talence Cedex

Centre de recherche INRIA Lille – Nord Europe : Parc Scientifique de la Haute Borne - 40, avenue Halley - 59650 Villeneuve d'Ascq

Centre de recherche INRIA Nancy – Grand Est : LORIA, Technopôle de Nancy-Brabois - Campus scientifique

615, rue du Jardin Botanique - BP 101 - 54602 Villers-lès-Nancy Cedex

Centre de recherche INRIA Paris – Rocquencourt : Domaine de Voluceau - Rocquencourt - BP 105 - 78153 Le Chesnay Cedex

Centre de recherche INRIA Rennes – Bretagne Atlantique : IRISA, Campus universitaire de Beaulieu - 35042 Rennes Cedex

Centre de recherche INRIA Saclay – Île-de-France : Parc Orsay Université - ZAC des Vignes : 4, rue Jacques Monod - 91893 Orsay Cedex

Centre de recherche INRIA Sophia Antipolis – Méditerranée : 2004, route des Lucioles - BP 93 - 06902 Sophia Antipolis Cedex

Éditeur

INRIA - Domaine de Voluceau - Rocquencourt, BP 105 - 78153 Le Chesnay Cedex (France)

<http://www.inria.fr>

ISSN 0249-6399