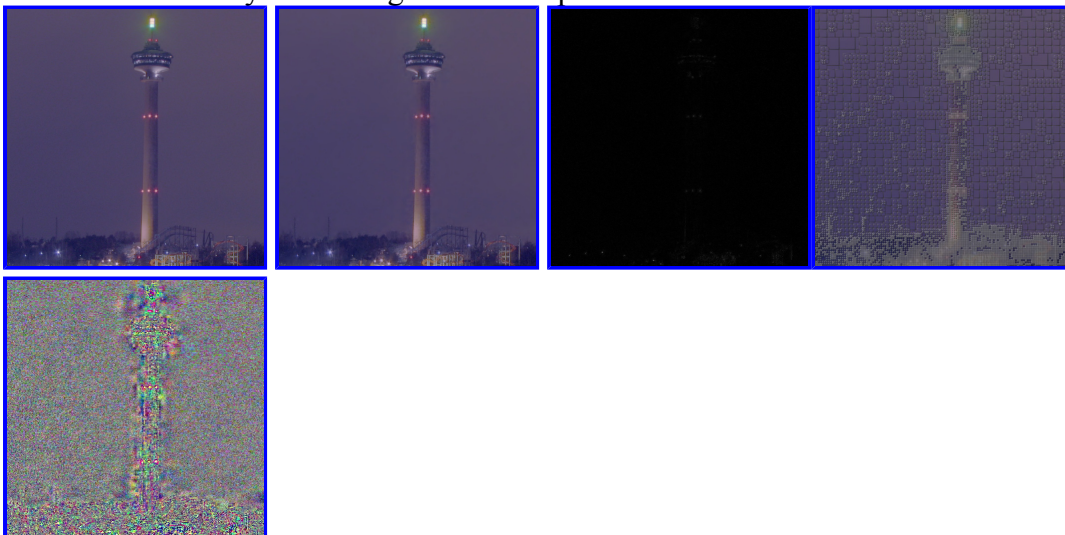


Tonemapped results (exposure compensation -3,0,3,6):



Aggressive tree compression in $\log(\text{RGB})$ space (input/output/diff/tree) and remaining residuals encoded in a low dynamic range DXT-compressed texture:



size of uncompressed image 3158028 bytes (96 bpp)

size of tree 22211 bytes

size of dictionary 10656 bytes

Total 32867 bytes

size of detail layer 131584 bytes

Total bpp 4.9991

$\log_2(\text{R})$ MSE = 0.001815 RMS = 0.042598

$\log_2(\text{G})$ MSE = 0.002385 RMS = 0.048832

$\log_2(\text{B})$ MSE = 0.001997 RMS = 0.044683

$\log_2(\text{RGB})$ MSE = 0.002065 RMS = 0.045445

Tonemapped results (exposure compensation -3,0,3,6):



Aggressive tree compression in $\log(\text{RGB})$ space (input/output/diff/tree) and remaining residuals encoded in a low dynamic range DXT-compressed texture:



size of uncompressed image 3158028 bytes (96 bpp)

size of tree 22300 bytes

size of dictionary 10656 bytes

Total 32956 bytes

size of detail layer 131584 bytes

Total bpp 5.0018

$\log_2(R)$ MSE = 0.001040 RMS = 0.032245

$\log_2(G)$ MSE = 0.002130 RMS = 0.046151

$\log_2(B)$ MSE = 0.003732 RMS = 0.061092

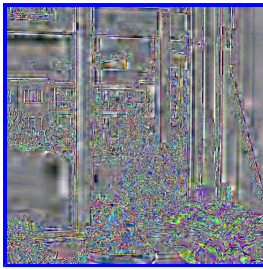
$\log_2(RGB)$ MSE = 0.002301 RMS = 0.047965

Tonemapped results (exposure compensation -3,0,3,6):



Aggressive tree compression in $\log(RGB)$ space (input/output/diff/tree) and remaining residuals encoded in a low dynamic range DXT-compressed texture:





size of uncompressed image 3158028 bytes (96 bpp)

size of tree 21070 bytes

size of dictionary 10656 bytes

Total 31726 bytes

size of detail layer 131584 bytes

Total bpp 4.96441

$\log_2(R)$ MSE = 0.002694 RMS = 0.051906

$\log_2(G)$ MSE = 0.003800 RMS = 0.061647

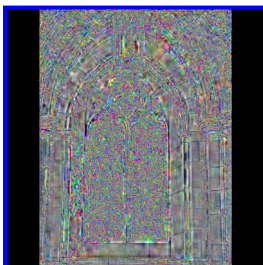
$\log_2(B)$ MSE = 0.004384 RMS = 0.066214

$\log_2(RGB)$ MSE = 0.003626 RMS = 0.060219

Tonemapped results (exposure compensation -3,0,3,6):



Aggressive tree compression in $\log(RGB)$ space (input/output/diff/tree) and remaining residuals encoded in a low dynamic range DXT-compressed texture:



size of uncompressed image 12607500 bytes (96 bpp)

size of tree 90985 bytes

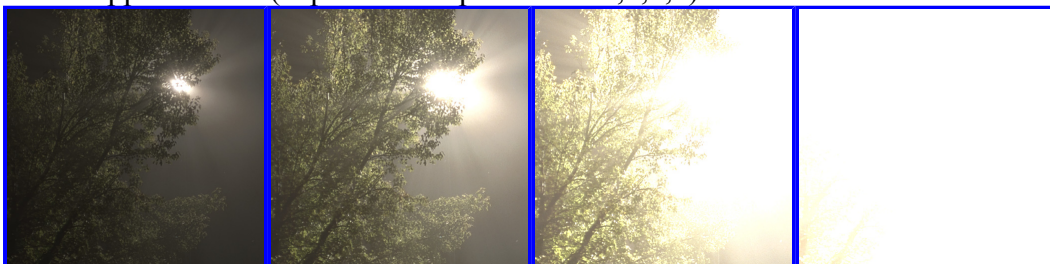
size of dictionary 12192 bytes

Total 103177 bytes

size of detail layer 392320 bytes
Total bpp **5.05196**

$\log_2(R)$ MSE = 0.002626 RMS = 0.051246
 $\log_2(G)$ MSE = 0.001591 RMS = 0.039885
 $\log_2(B)$ MSE = 0.001498 RMS = 0.038698
 $\log_2(RGB)$ MSE = 0.001905 RMS = 0.043644

Tonemapped results (exposure compensation -3,0,3,6):



Aggressive tree compression in $\log(RGB)$ space (input/output/diff/tree) and remaining residuals encoded in a low dynamic range DXT-compressed texture:



size of uncompressed image 3158028 bytes (96 bpp)

size of tree 20674 bytes
size of dictionary 10656 bytes
Total **31330 bytes**
size of detail layer 131584 bytes
Total bpp **4.95238**

$\log_2(R)$ MSE = 0.014354 RMS = 0.119810
 $\log_2(G)$ MSE = 0.016533 RMS = 0.128580
 $\log_2(B)$ MSE = 0.015860 RMS = 0.125936
 $\log_2(RGB)$ MSE = 0.015582 RMS = 0.124829

Tonemapped results (exposure compensation -3,0,3,6):



Aggressive tree compression in $\log(\text{RGB})$ space (input/output/diff/tree) and remaining residuals encoded in a low dynamic range DXT-compressed texture:



size of uncompressed image 3158028 bytes (96 bpp)

size of tree 20414 bytes

size of dictionary 10656 bytes

Total 31070 bytes

size of detail layer 131584 bytes

Total bpp 4.94447

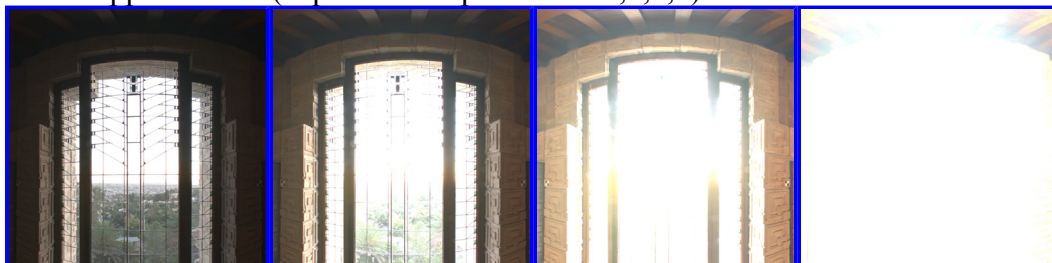
$\log_2(\text{R})$ MSE = 0.003039 RMS = 0.055127

$\log_2(\text{G})$ MSE = 0.006254 RMS = 0.079085

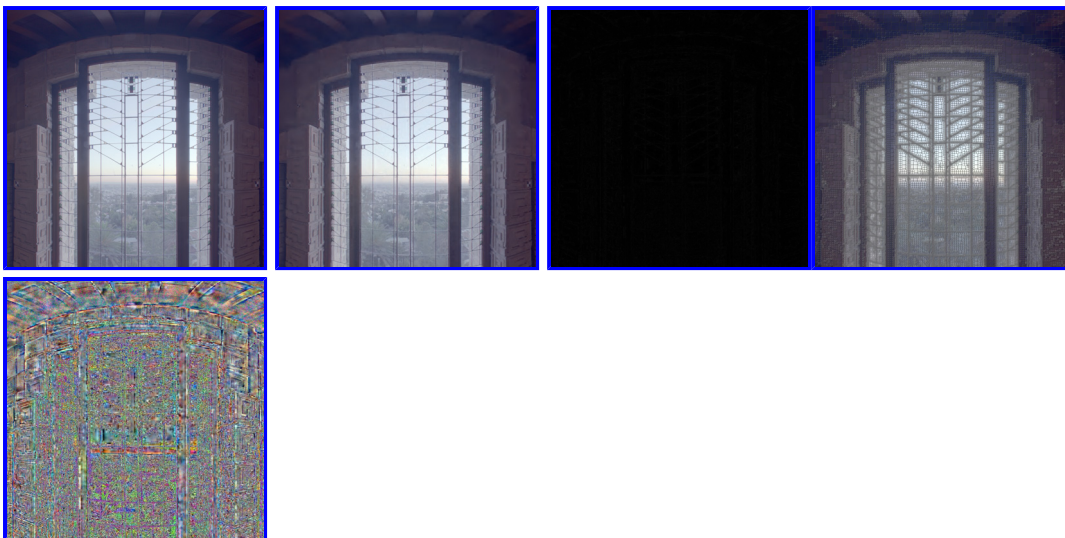
$\log_2(\text{B})$ MSE = 0.007726 RMS = 0.087899

$\log_2(\text{RGB})$ MSE = 0.005673 RMS = 0.075321

Tonemapped results (exposure compensation -3,0,3,6):



Aggressive tree compression in $\log(\text{RGB})$ space (input/output/diff/tree) and remaining residuals encoded in a low dynamic range DXT-compressed texture:



size of uncompressed image 12607500 bytes (96 bpp)

size of tree 123656 bytes

size of dictionary 12192 bytes

Total 135848 bytes

size of detail layer 525312 bytes

Total bpp 5.03441

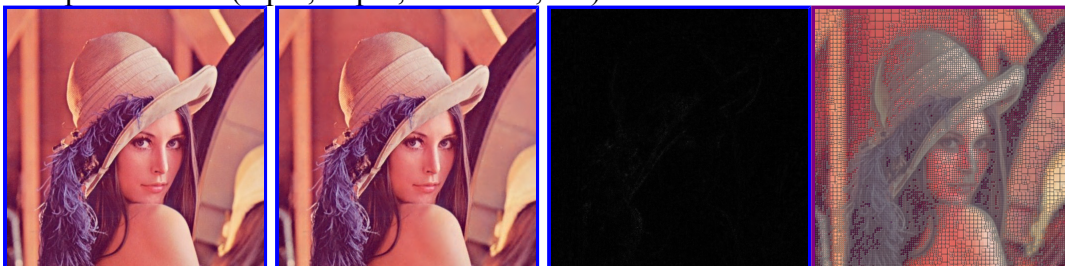
$\log_2(R)$ MSE = 0.004032 RMS = 0.063496

$\log_2(G)$ MSE = 0.003766 RMS = 0.061365

$\log_2(B)$ MSE = 0.001232 RMS = 0.035098

$\log_2(RGB)$ MSE = 0.003010 RMS = 0.054861

Compressed data (input,output,difference,tree):



size of uncompressed image 789507 bytes (24 bpp)

size of tree 56507 bytes

size of dictionary 10656 bytes

Total 67163 bytes

Total bpp 2.04167

R MSE = 9.377791 RMS = 3.062318 PSNR = 38.409798

G MSE = 8.983387 RMS = 2.997230 PSNR = 38.596405

B MSE = 9.279368 RMS = 3.046206 PSNR = 38.455620

avg MSE = 9.213516 RMS = 3.035378 PSNR = 38.486549