



HAL
open science

Nonlinear gap junctions enable long-distance propagation of pulsating calcium waves in astrocyte networks.

Mati Goldberg, Maurizio de Pittà, Vladislav Volman, Hugues Berry, Eshel Ben-Jacob

► **To cite this version:**

Mati Goldberg, Maurizio de Pittà, Vladislav Volman, Hugues Berry, Eshel Ben-Jacob. Nonlinear gap junctions enable long-distance propagation of pulsating calcium waves in astrocyte networks.. PLoS Computational Biology, 2010, 6 (8), 10.1371/journal.pcbi.1000909 . inria-00575656

HAL Id: inria-00575656

<https://inria.hal.science/inria-00575656v1>

Submitted on 12 Apr 2011

HAL is a multi-disciplinary open access archive for the deposit and dissemination of scientific research documents, whether they are published or not. The documents may come from teaching and research institutions in France or abroad, or from public or private research centers.

L'archive ouverte pluridisciplinaire **HAL**, est destinée au dépôt et à la diffusion de documents scientifiques de niveau recherche, publiés ou non, émanant des établissements d'enseignement et de recherche français ou étrangers, des laboratoires publics ou privés.

Nonlinear Gap Junctions Enable Long-Distance Propagation of Pulsating Calcium Waves in Astrocyte Networks

Mati Goldberg¹, Maurizio De Pittà¹, Vladislav Volman^{2,3}, Hugues Berry^{4*}, Eshel Ben-Jacob^{1,2*}

1 School of Physics and Astronomy, Tel Aviv University, Ramat Aviv, Israel, **2** Center for Theoretical Biological Physics, University of California San Diego, La Jolla, California, United States of America, **3** Computational Neurobiology Lab, The Salk Institute, La Jolla, California, United States of America, **4** Project-Team Combining, INRIA Rhône-Alpes, Villeurbanne, France

Abstract

A new paradigm has recently emerged in brain science whereby communications between glial cells and neuron-glia interactions should be considered together with neurons and their networks to understand higher brain functions. In particular, astrocytes, the main type of glial cells in the cortex, have been shown to communicate with neurons and with each other. They are thought to form a gap-junction-coupled syncytium supporting cell-cell communication via propagating Ca^{2+} waves. An identified mode of propagation is based on cytoplasm-to-cytoplasm transport of inositol trisphosphate (IP_3) through gap junctions that locally trigger Ca^{2+} pulses via IP_3 -dependent Ca^{2+} -induced Ca^{2+} release. It is, however, currently unknown whether this intracellular route is able to support the propagation of long-distance regenerative Ca^{2+} waves or is restricted to short-distance signaling. Furthermore, the influence of the intracellular signaling dynamics on intercellular propagation remains to be understood. In this work, we propose a model of the gap-junctional route for intercellular Ca^{2+} wave propagation in astrocytes. Our model yields two major predictions. First, we show that long-distance regenerative signaling requires nonlinear coupling in the gap junctions. Second, we show that even with nonlinear gap junctions, long-distance regenerative signaling is favored when the internal Ca^{2+} dynamics implements frequency modulation-encoding oscillations with pulsating dynamics, while amplitude modulation-encoding dynamics tends to restrict the propagation range. As a result, spatially heterogeneous molecular properties and/or weak couplings are shown to give rise to rich spatiotemporal dynamics that support complex propagation behaviors. These results shed new light on the mechanisms implicated in the propagation of Ca^{2+} waves across astrocytes and the precise conditions under which glial cells may participate in information processing in the brain.

Citation: Goldberg M, De Pittà M, Volman V, Berry H, Ben-Jacob E (2010) Nonlinear Gap Junctions Enable Long-Distance Propagation of Pulsating Calcium Waves in Astrocyte Networks. *PLoS Comput Biol* 6(8): e1000909. doi:10.1371/journal.pcbi.1000909

Editor: Boris S. Gutkin, École Normale Supérieure, Collège de France, CNRS, France

Received: January 13, 2010; **Accepted:** July 28, 2010; **Published:** August 26, 2010

Copyright: © 2010 Goldberg et al. This is an open-access article distributed under the terms of the Creative Commons Attribution License, which permits unrestricted use, distribution, and reproduction in any medium, provided the original author and source are credited.

Funding: MDP and VV acknowledge the support of the U.S. National Science Foundation I2CAM International Materials Institute Award, Grants DMR-0844115 and DMR-0645461. MDP also thanks the Center for Theoretical Biological Physics (CTBP) at University of California at San Diego for hospitality while part of this research was carried out. This research was supported by the Tauber Family Foundation, by the Maguy-Glass Chair in Physics of Complex Systems at Tel Aviv University, by the NSF-sponsored Center for Theoretical Biological Physics (CTBP), PHY grants 0216576 and 0225630 and by the University of California at San Diego. The funders had no role in study design, data collection and analysis, decision to publish, or preparation of the manuscript.

Competing Interests: The authors have declared that no competing interests exist.

* E-mail: eshel@tamar.tau.ac.il (EBJ); hugues.berry@inria.fr (HB)

Introduction

The 20th century witnessed crystallization of the neuronal doctrine, viewing neuron as the fundamental building block responsible for higher brain functions. Yet, neurons are not the only cells in the brain. In fact, almost 50% of the cells in the human brain are glial cells [1,2]. Due to their apparent lack of fast electrical excitability, the potential importance of glial cells in neural computation was downgraded in favor of the critical role played by these cells in neural metabolism. Recent experimental evidence however suggests that glial cells provide a role much more than support, including control of synapse function and formation, adult neurogenesis and regulation of cerebral blood flow (see e.g. [3] for a review). As a consequence, a new paradigm is emerging in brain science, according to which glial cells should be considered on a par with neurons.

In particular, astrocytes, the main type of glial cells in the cortex, have attracted much attention because they have been

shown to communicate with neurons and with each other. Indeed, astrocytes can integrate neuronal inputs and modulate the synaptic activity between two neurons [4]. Neurotransmitters released from pre-synaptic neurons can bind to specific receptors on the astrocyte membrane and evoke Ca^{2+} elevations in the astrocyte cytoplasm [5]. In turn, these activated astrocytes may release gliotransmitters, including glutamate and ATP, which feed back onto the synaptic terminals and modulate neuron responses [6].

Two main types of neuronal activity-dependent Ca^{2+} responses are observed in astrocytes [7,8]: (1) transient Ca^{2+} increases that are restricted to the very extremity of their distal processes [9,10] and (2) Ca^{2+} elevations propagating along these processes as regenerative Ca^{2+} waves, eventually reaching the cell soma. The latter kind of event can even propagate to neighboring astrocytes, thus forming intercellular Ca^{2+} waves [11,12]. Although intercellular Ca^{2+} waves have been extensively observed in astrocyte cultures [13,14], recent experimental evidence supports the possibility that they could also occur under physiological

Author Summary

In recent years, the focus of Cellular Neuroscience has progressively stopped only being on neurons but started to include glial cells as well. Indeed, astrocytes, the main type of glial cells in the cortex, dynamically modulate neuron excitability and control the flow of information across synapses. Moreover, astrocytes have been shown to communicate with each other over long distances using calcium waves. These waves spread from cell to cell via molecular gates called gap junctions, which connect neighboring astrocytes. In this work, we used a computer model to question what biophysical mechanisms could support long-distance propagation of Ca²⁺ wave signaling. The model shows that the coupling function of the gap junction must be non-linear and include a threshold. This prediction is largely unexpected, as gap junctions are classically considered to implement linear functions. Recent experimental observations, however, suggest their operation could actually be more complex, in agreement with our prediction. The model also shows that the distance traveled by waves depends on characteristics of the internal astrocyte dynamics. In particular, long-distance propagation is facilitated when internal calcium oscillations are in their frequency-modulation encoding mode and are pulsating. Hence, this work provides testable experimental predictions to decipher long-distance communication between astrocytes.

conditions [6], with propagation distances ranging from four [15] to up to 30 astrocytes [16]. These results therefore indicate that waves in astrocytes may represent an effective form of intercellular signaling in the central nervous system [17,18]. But further, they almost irresistibly bring about the hypothesis that this persistent astrocyte wave-based signaling could extend the repertoire of neural network communications, adding non-local interactions, both in space and in time [3].

In order to assess this hypothesis though, several aspects of Ca²⁺ signaling in astrocytes remain to be elucidated. Experimental data suggest that a stimulus impinging on an astrocyte is preferentially encoded in the modulation of the frequency (FM) of astrocytic Ca²⁺ oscillations [10]. This type of oscillations is often characterized by pulsating waves, i.e. the propagation of peak waveforms, with width smaller than period. However, the possibility of amplitude modulation (AM) or even coexisting AM and FM (AFM) encoding have also been inferred [19,20]. Actually, the frequency and amplitude of astrocytic Ca²⁺ oscillations can be highly variable, depending on cell-specific properties such as Ca²⁺ content of the intracellular stores, or the spatial distribution, density and activity of (sarco)-endoplasmic reticulum Ca²⁺-ATPase (SERCA) pumps [21,22]. Yet, the propagation of wave-like signalling in the context of such great variability is yet not fully understood [14].

Much effort has also been devoted to understand the mechanisms responsible for initiation and propagation of intercellular Ca²⁺ waves. From a single-cell point of view, intracellular Ca²⁺ dynamics in astrocytes is mainly due to Ca²⁺-induced Ca²⁺ release (CICR) from the endoplasmic reticulum (ER) stores and its regulation by inositol trisphosphate (IP₃) [6]. But for the transmission of these internal signals from one astrocyte to the other, two possible routes have been uncovered. The first one involves the transfer of IP₃ molecules directly from the cytosol of an astrocyte to that of an adjacent one through gap junction intercellular hemichannels [23]. In the second route instead, propagation is mediated by extracellular diffusion of ATP which binds to plasma membrane receptors on neighboring astrocytes

and regulates IP₃ levels therein [18,24]. Although these two routes need not be mutually exclusive, experiments indicated that intracellular propagation through gap junctions is likely the predominant signaling route in many astrocyte types [19,25–27].

Albeit experimental protocols monitor wave propagation as variations of intracellular Ca²⁺, the molecule that is transmitted through gap junctions to neighboring astrocytes is not Ca²⁺, but IP₃ [27]. Indeed, when the IP₃ in a given cell increases, some of it can be transported through a gap junction to a neighbor astrocyte. This IP₃ surge in the neighbor cell can in turn trigger CICR, thus regenerating the original Ca²⁺ signal. Yet, the transported IP₃ is required to reach a minimal threshold concentration to trigger CICR in the neighboring cell. If this threshold is not reached, propagation ceases [28]. In this regard, previous theoretical studies stressed the importance of a mechanism for at least partial regeneration of IP₃ levels [29,30]. Such a mechanism, coupled with IP₃ transport, could induce local IP₃ concentrations large enough to trigger CICR [30], thus enabling Ca²⁺ wave propagation. Production of IP₃ by Ca²⁺-dependent PLCδ has been suggested as a plausible candidate regeneration mechanism [29,31,32]. However, the intercellular latencies of the Ca²⁺ waves simulated with this mechanism are hardly reconcilable with experimental observations, hinting a critical role for gap junction IP₃ permeability [29,30].

In the present study, we investigated the intercellular propagation of Ca²⁺ waves through the gap-junctional route by a computer model of one-dimensional astrocyte network. To account for intracellular Ca²⁺ dynamics, we adopted the concise realistic description of IP₃-coupled Ca²⁺ dynamics in astrocytes previously introduced in Ref. [33]. We specifically focused on the influence of gap junction linearity and internal Ca²⁺ dynamics on the wave propagation distance. By means of bifurcation analysis and numerical solutions, we show that nonlinear coupling between astrocytes can indeed favor IP₃ partial regeneration thus promoting large-distance intercellular Ca²⁺ wave propagation. Our study also shows that long-distance wave propagation critically depends on the nature of intracellular Ca²⁺ encoding (i.e. whether Ca²⁺ signals are FM or AM) and the spatial arrangement of the cells. Furthermore, our results suggest that, in the presence of weak coupling, nonlinear gap junctions could also explain the complex intracellular oscillation dynamics observed during intercellular Ca²⁺ wave propagation in astrocyte networks [12].

Methods

The ChI model of intracellular Ca²⁺ dynamics

We describe calcium dynamics in astrocytes by an extended version of the Li-Rinzel model [34], called the *ChI* model that we developed and studied in [33]. A detailed presentation of this model is also given in the Supplementary Information. Briefly, the *ChI* model accounts for the complex signaling pathway illustrated in Figure 1 that includes Ca²⁺ regulation by IP₃-dependent CICR as well as IP₃ dynamics resulting from PLCδ-mediated synthesis and degradation by IP₃ 3-kinase (3K) and inositol polyphosphate (IP) 5-phosphatase (5P). The temporal evolution of astrocytic intracellular calcium in our model is described by three coupled nonlinear equations:

$$\frac{dC}{dt} = J_{chan}(C,h,IP_3) + J_{leak}(C) - J_{pump}(C) \tag{1}$$

$$\frac{dh}{dt} = (h_{\infty}(C,IP_3) - h) / \tau_h(C,IP_3) \tag{2}$$

$$\frac{dIP_3}{dt} = P_{PLC\delta}(C,IP_3) - D_{3K}(C,IP_3) - D_{5P}(IP_3) \tag{3}$$

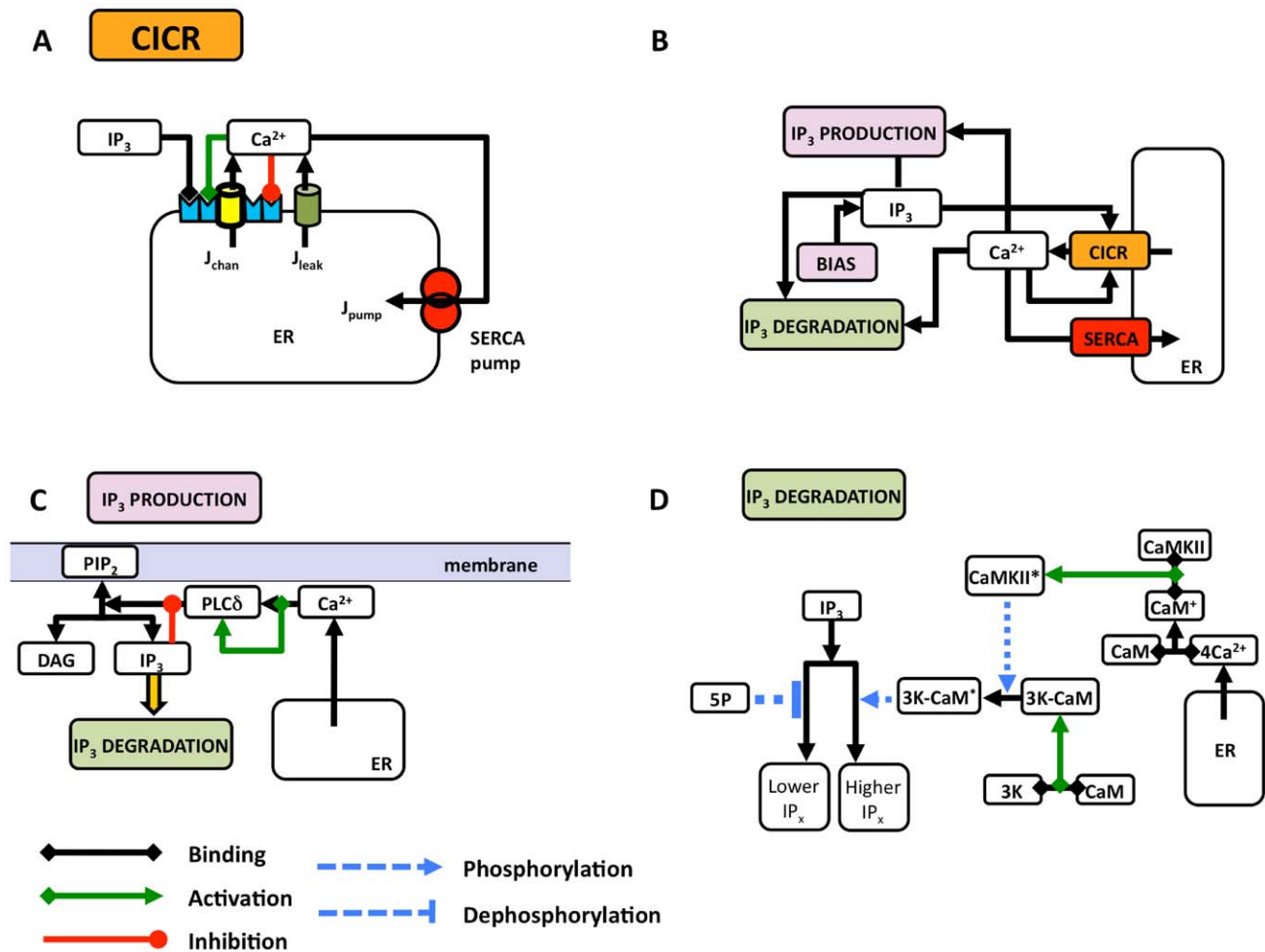


Figure 1. Sketch of the signaling pathways considered in the *ChI* model. (a) Ca²⁺-induced Ca²⁺ release (CICR) from the endoplasmic reticulum (ER) is the main mechanism responsible for intracellular Ca²⁺ dynamics in astrocytes. (b) Schematic of the coupling between Ca²⁺ dynamics and IP₃ metabolism in the astrocyte. (c) Endogenous IP₃ production is brought forth by hydrolysis of PIP₂ by PLCδ (the activity of which is regulated by Ca²⁺). (d) Degradation of IP₃ mainly occurs through IP₃ 3-kinase- (3K-) catalyzed phosphorylation and inositol polyphosphate 5-phosphatase (IP-5P)-mediated dephosphorylation. For simplicity, Ca²⁺-dependent PKC-mediated phosphorylation of IP₃-3K [75] and competitive binding of IP₄ to IP-5P are not considered in this study. The legend of different arrows is given below (c).
doi:10.1371/journal.pcbi.1000909.g001

in which the variables C , h , IP_3 represent the cell-averaged calcium concentration, the fraction of open IP₃R channels on the ER membrane, and the cell-averaged concentration of IP₃ second messenger, respectively. Each one of these variables is coupled to others via the set of equations that describe contributions of different biochemical pathways, as described in details in Supplementary Information (equations S1–S4) alongside the complete mathematical analysis of the model features.

In a single-cell context, this model reproduces most of the available experimental data related to calcium oscillations in astrocytes. In particular, it faithfully reproduces the experimentally reported changes of oscillation frequency and wave shape caused by SERCA pump activity modulations [22].

Astrocyte coupling

Experimental evidence shows that chemical signaling between astrocytes usually takes the form of propagating Ca²⁺ pulses that are elicited following the gap-junctional transfer of IP₃ second messenger molecules [13]. Intracellular IP₃ activates the CICR pathway, giving rise to the observed rapid transient elevations in

cytosolic free calcium. We considered three scenarios to describe the exchange of IP₃ between a pair of adjacent astrocytes: (1) linear, (2) threshold-linear (composed of a linear term operating after a threshold) and (3) non-linear (here described as sigmoid) coupling (see Figure 2). The linear model is a simple diffusive coupling; however, threshold-linear and non-linear models both transfer IP₃ only when the IP₃ gradient between the two adjacent cells overcomes a threshold value.

Our investigation of nonlinear coupling case was motivated by the experimental observations suggesting that gap junction permeability in itself can be actively modulated by various factors, among them different second messengers. Indeed, there is growing evidence that gap junctions may have greater selectivity and more active gating properties than previously recognized [35]. Several signaling pathways are able to modulate junctional permeability. In particular, the conductance state of Cx43, the main type of connexin in astrocyte gap junctions [36] is regulated by phosphorylation by PKC, which is also involved in IP₃ degradation [37,38], as well as by intracellular Ca²⁺ [39]. These data suggest that astrocyte gap junction gating could be coupled to

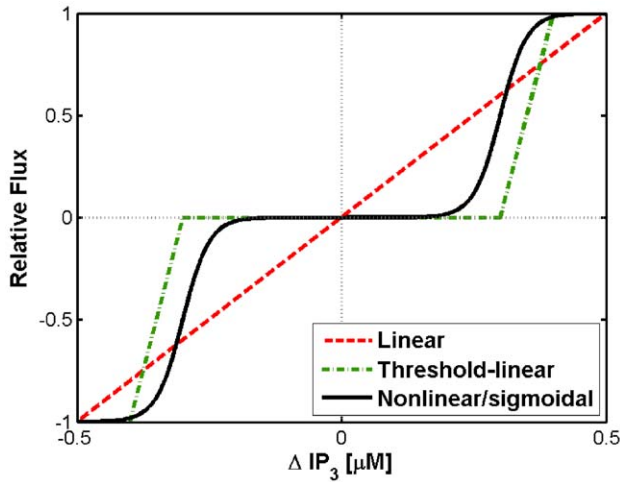


Figure 2. The coupling functions used in the current study to model different types of gap-junctions. Shown is the relative flux, i.e. the value the IP_3 flux divided by the coupling force F as a function of the IP_3 gradient (ΔIP_3) between two coupled cells, for linear, threshold-linear and sigmoidal coupling. Parameters: $\text{IP}_3^{\text{thr}} = 0.3 \mu\text{M}$, $\text{IP}_3^{\text{scale}} = 0.05 \mu\text{M}$. doi:10.1371/journal.pcbi.1000909.g002

intra- and inter-cellular IP_3 and Ca^{2+} dynamics [40,41] in a nontrivial fashion. Accordingly, several previous simulation studies have explored the influence of complex (e.g. regulated by second messengers) gap junctions [42–44]. We explore here their effects on intracellular Ca^{2+} wave propagation in astrocytes.

Linear coupling function. The linear model simply results from Fick's law of diffusion. The flux $J_{i \rightarrow j}$ of IP_3 molecules (where i, j are indices of adjacent model astrocytes) is proportional to their concentration gradient:

$$J_{i \rightarrow j} = F \cdot \Delta_{ij} \text{IP}_3 \quad (4)$$

where $\Delta_{ij} \text{IP}_3 = \text{IP}_3^i - \text{IP}_3^j$. Such coupling function is the standard model for a gap junction acting as a passive channel [30]. The coupling strength (or permeability) F depends on the number of gap junction channels and their unitary permeability, and in what follows, it will be considered as a parameter.

Non-linear coupling functions: sigmoid and threshold-linear. Threshold-linear coupling only partially keeps the linear characteristics of the “classical” gap junction adding a threshold on IP_3 gradient below which the flux $J_{i \rightarrow j}$ is zero. On the other hand, sigmoid coupling adds a further saturating threshold on the IP_3 gradient value, above which the IP_3 flux is constant.

Sigmoid coupling is defined as:

$$J_{i \rightarrow j} = \frac{F}{2} \left(1 + \tanh \left(\frac{|\Delta_{ij} \text{IP}_3| - \text{IP}_3^{\text{thr}}}{\text{IP}_3^{\text{scale}}} \right) \right) \frac{\Delta_{ij} \text{IP}_3}{|\Delta_{ij} \text{IP}_3|} \quad (5)$$

where F is the coupling factor, IP_3^{thr} is the predetermined threshold value and $\text{IP}_3^{\text{scale}}$ is the width of the transition zone in the sigmoid function (see Figure 2). In order to allow comparison of the effects of the threshold-linear coupling function with that of the sigmoid one, the slope of the threshold-linear function was chosen to be coincident with that of the sigmoid coupling function (Figure 2). Threshold linear coupling is thus defined as:

$$J_{i \rightarrow j} = \frac{F}{2} \cdot \Theta \left(\frac{|\Delta_{ij} \text{IP}_3| - \text{IP}_3^{\text{thr}} - \text{IP}_3^{\text{scale}}}{\text{IP}_3^{\text{scale}}} \right) \frac{\Delta_{ij} \text{IP}_3}{|\Delta_{ij} \text{IP}_3|} \quad (6)$$

with the threshold function $\Theta(x) = x$ if $x > 0$, and 0 otherwise.

The network model

We consider chains of N astrocytes where each astrocyte is coupled to its two nearest neighbors via gap junctions. Each i -th astrocyte ($i = 1, \dots, N$) is associated with three variables C^i , h^i and IP_3^i , that are respectively the cytosolic Ca^{2+} concentration, the ratio of open IP_3Rs and the intracellular IP_3 concentration in this astrocyte. The dynamics of these internal variables is given by the *ChI* model (equations 1–3 and Supplementary Information for a detailed explanation):

$$\forall i = 1, \dots, N,$$

$$\frac{dC^i}{dt} = J_{\text{chan}}(C^i, h^i, \text{IP}_3^i) + J_{\text{leak}}(C^i) - J_{\text{pump}}(C^i) \quad (7)$$

$$\frac{dh^i}{dt} = (h_{\infty}(C^i, \text{IP}_3^i) - h^i) / \tau_h(C^i, \text{IP}_3^i) \quad (8)$$

For all cells that are not at the boundaries of the astrocyte chain (i.e. $\forall i = 2, \dots, N-1$):

$$\frac{d\text{IP}_3^i}{dt} = \frac{d\text{IP}_3^i}{dt} \Big|_r + J_{i-1 \rightarrow i} + J_{i+1 \rightarrow i} \quad (9)$$

where the internal reaction term for IP_3 , i.e. $\frac{d\text{IP}_3^i}{dt} \Big|_r$, is given by equation (3). By contrast, the equations for the first and last cells, namely cell 1 and N , depend on the boundary conditions. We considered three types of boundary conditions: (1) reflective, (2) absorbing and (3) periodic.

Reflective (zero-flux) boundaries assume that IP_3 exiting cell 1 or N can only flow to cell 2 or $N-1$, respectively. They are given by:

$$\begin{cases} \frac{d\text{IP}_3^1}{dt} = \frac{d\text{IP}_3^1}{dt} \Big|_r + J_{2 \rightarrow 1} \\ \frac{d\text{IP}_3^N}{dt} = \frac{d\text{IP}_3^N}{dt} \Big|_r + J_{N-1 \rightarrow N} \end{cases} \quad (10)$$

We also considered the case where cells 1 and N are absorbing, namely they entrap incoming IP_3 fluxes. This is the case of absorbing boundary conditions in which IP_3 can flow from cell 2 to cell 1, but the reverse flux (from cell 1 to 2) is always null (and similarly for cells N and $N-1$). Accordingly, equations read:

$$\begin{cases} \frac{d\text{IP}_3^1}{dt} = \frac{d\text{IP}_3^1}{dt} \Big|_r + \Theta(J_{2 \rightarrow 1}) \\ \frac{d\text{IP}_3^2}{dt} = \frac{d\text{IP}_3^2}{dt} \Big|_r + J_{3 \rightarrow 2} - \Theta(J_{2 \rightarrow 1}) \\ \frac{d\text{IP}_3^{N-1}}{dt} = \frac{d\text{IP}_3^{N-1}}{dt} \Big|_r + J_{N-2 \rightarrow N-1} - \Theta(J_{N-1 \rightarrow N}) \\ \frac{d\text{IP}_3^N}{dt} = \frac{d\text{IP}_3^N}{dt} \Big|_r + \Theta(J_{N-1 \rightarrow N}) \end{cases} \quad (11)$$

Finally, with periodic boundary conditions, the 1D astrocyte chain

actually takes the shape of a ring and the equations read:

$$\begin{cases} \frac{dIP_3^1}{dt} = \frac{dIP_3^1}{dt} \Big|_r + J_{N \rightarrow 1} + J_{2 \rightarrow 1} \\ \frac{dIP_3^N}{dt} = \frac{dIP_3^N}{dt} \Big|_r + J_{N-1 \rightarrow N} + J_{1 \rightarrow N} \end{cases} \quad (12)$$

Stimulation

To induce wave propagation in the astrocyte chain, one cell (referred to as the “driving” cell) is stimulated by a supplementary exogenous IP₃ input. This external stimulus is supplied through a (virtual) “dummy” cell, coupled to the driving cell by one of the coupling functions described above. In this sense, the dummy cell acts as an IP₃ reservoir in which the level of IP₃ is kept fixed to a constant value IP_3^{bias} .

Let k be the coordinate of the stimulated cell (driving cell) within the 1D chain. In this study, we usually stimulate the first cell or the central one, that is $k=1$ or $k=(N+1)/2$ (N odd). Hence, IP₃ dynamics in the k -th cell is given by

$$\frac{dIP_3^k}{dt} = \frac{dIP_3^k}{dt} \Big|_r + J_{k-1 \rightarrow k} + J_{k+1 \rightarrow k} + J_{0 \rightarrow k} \quad (13)$$

where $J_{0 \rightarrow k}$ is calculated using $\Delta_{0k}IP_3 = IP_3^{\text{bias}} - IP_3^k$ in equation (4).

Most simulations done in this work were driven by a constant value of IP_3^{bias} . In the last section though, a square positive wave stimulus was applied to the model.

Initial conditions for all cells were set in agreement with experimental values reported in astrocytes for Ca²⁺ and IP₃ at basal conditions [45].

Numerics

The chain model consists of $3N$ non-linear ODEs, where the number of astrocytes in the chain, N , ranged from 1 to 100. Time solutions were obtained via numerical integration by a standard 4th-order Runge-Kutta scheme with a time step of 10 ms as this value showed to be the best compromise between integration time and robustness of the results. The computational model was implemented in Matlab (2009a, The MathWorks, Natick, MA) and C. Bifurcation analysis was done using XPPAUT (<http://www.math.pitt.edu/~bard/xpp/xpp.html>). Nonlinear time series analysis was performed using the TISEAN software package [46]. Table S1 in the Supplementary Information lists the values of the parameters used in the model.

Results

Before proceeding to study the propagation of calcium waves in spatially extended networks of astrocytes, it was necessary to understand the dynamical response of a single model cell in response to IP₃ stimulation. To this end, we performed a detailed bifurcation analysis of our model astrocytes. A wealth of dynamical regimes was discovered, allowing model astrocytes to encode information about IP₃ stimulus in amplitude-modulated (AM), frequency-modulated (FM) or mixed (AFM) modes, depending on parameter values (see Text S1 in the Supplementary Information and refs. [47,48]). We then proceeded to study the bifurcation diagrams for systems of coupled model astrocytes (utilizing different types of coupling as detailed in Methods). Briefly, the bifurcation analysis showed the existence of FM pulse-like oscillatory regimes at low IP_3^{bias} values, which can turn into

complex oscillations for larger IP_3^{bias} values. Because stable oscillation regimes could coexist in the bifurcation diagrams with stable fixed points, it could not be predicted from these diagrams whether an IP₃ input to the cell would trigger pulse-like oscillations or not, i.e. whether it would switch the system from the fixed point to the oscillatory regime. Thus, we resorted to extensive numerical simulations to investigate under what conditions one could observe propagation of Ca²⁺ waves along the astrocyte chain.

In agreement with previous studies (see [33] for a review), IP₃-triggered CICR indeed allows intercellular Ca²⁺ wave propagation in our modeling framework, as shown in Supplementary Information Figure S3. However, the range of wave propagation was usually restricted to and depended on the biophysical parameters that determine the profile of intracellular IP₃ dynamics [32]. In what follows, we delineate the role that these parameters play in Ca²⁺ wave propagation, under different coupling modes (linear vs. nonlinear) and different encoding regimes (FM vs. AFM).

Calcium wave propagation along astrocyte chains

Linear vs. non-linear gap junctions. Propagation patterns both for the linear and nonlinear cases are presented in Figure 3 for the case of FM-encoding cells ($N=12$). Here, a constant stimulus ($IP_3^{\text{bias}} = 1.0 \mu\text{M}$) was used and always applied to the first cell of the chain. Model analysis (see Methods) predicted that this level of IP₃ would trigger periodic Ca²⁺ pulses at least in the stimulated cell and possibly in the other ones as indeed confirmed by simulations (see Astrocyte 1) both in the case of linear and nonlinear coupling. For the linear coupling case, we observed propagation failure at 6th-7th cell from the driving one (Figures 3a,b). By contrast, in the nonlinear coupling scenario, Ca²⁺ pulses can propagate for the whole length of the chain (Figures 3c,d).

Analysis of the IP₃ pattern for the nonlinear coupling function (Figure 3d) evidences a strong correlation between IP₃ and Ca²⁺ pulses. The IP₃ pulses are followed in time by the Ca²⁺ ones, suggesting that pulsed Ca²⁺ propagation is mediated by the propagation of IP₃ across the cells. By contrast, in the case of linear coupling, the correlation between the propagating Ca²⁺ pulses and the intracellular IP₃ signals is not so apparent (Figures 3a,b) as IP₃ seems to diffuse smoothly from the stimulated cell without any effective propagation pattern.

The observed difference in the propagation distance between linear and nonlinear gap-junction couplings can be understood from this analysis. Indeed, in the case of linear gap-junction coupled cells, the IP₃ arriving in cell i from cell $i-1$ is transferred forward to cell $i+1$ before it can significantly accumulate in cell i . As a result, the IP₃ displays the almost diffusive pattern of Figure 3b, with a fast decay as the distance from the stimulated cell increases, and not real travelling wave structure in space. Hence even with large values of the coupling strength or stimulus intensity, beyond a limited number of cells away from the stimulated one, the IP₃ concentration becomes too small to trigger CICR. This stops Ca²⁺ wave propagation. Conversely, with nonlinear gap junctions, IP₃ can accumulate in cell i (and trigger CICR) before it reaches the gap junction threshold and gets transferred to cell $i+1$. As a result, the IP₃ concentration evolves to the locally regenerative spatiotemporal pattern illustrated in Figure 3d) that allows Ca²⁺ wave propagation over the whole network.

The distances (measured in units of number of cells) travelled by the propagating Ca²⁺ waves as a function of the stimulation amplitude for an astrocyte chain of $N=25$ FM-encoding cells are reported in Figure 4a. For linear gap junctions, the propagation

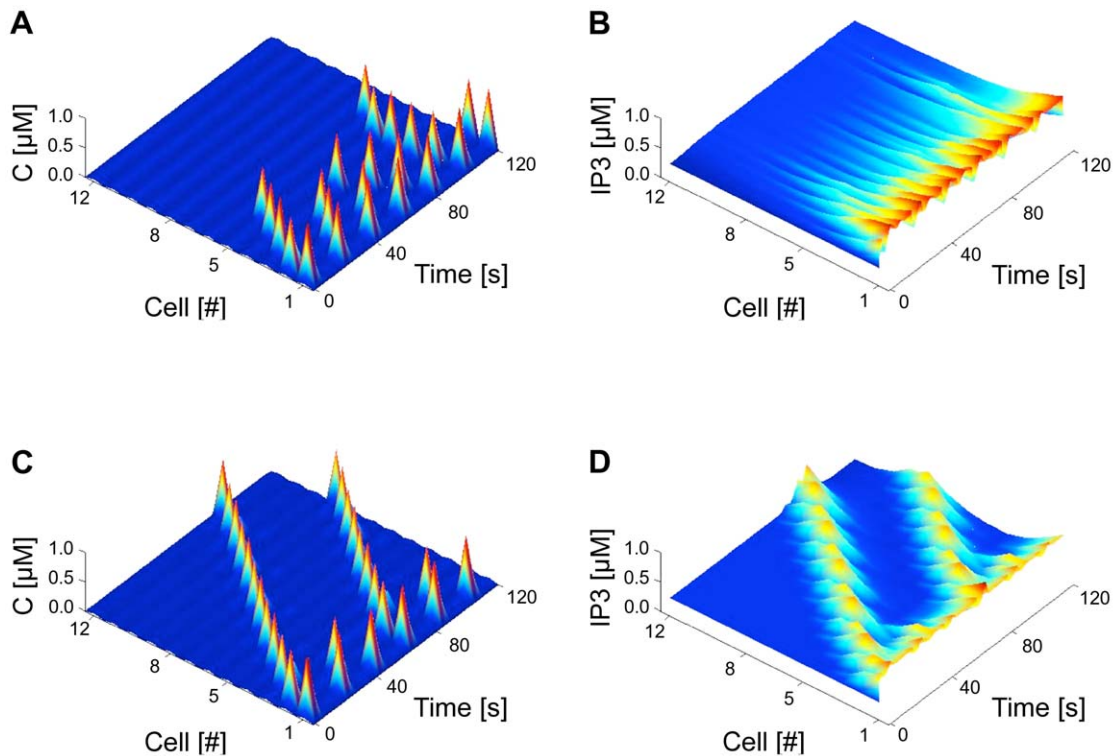


Figure 3. Propagation patterns with linear (a, b) and non-linear sigmoidal (c, d) gap junctions. The astrocyte chain was composed of 12 FM-encoding cells with reflective boundary conditions. Stimulation triggered by $\text{IP}_3^{\text{bias}} = 1.0 \mu\text{M}$ from $t = 0$ s to $t = 120$ s applied to the first cell in the line.

doi:10.1371/journal.pcbi.1000909.g003

distance increases with $\text{IP}_3^{\text{bias}}$, but never exceeds one third of the chain length. On the contrary, with nonlinear sigmoid coupling, Ca^{2+} oscillations propagate along the whole chain as soon as the oscillatory regime is engaged (that is for $\text{IP}_3^{\text{bias}} > 0.72 \mu\text{M}$, see Figure S2).

Figure 4a further shows that threshold-linear gap junctions exhibit almost the same response as sigmoid ones but with different effective threshold IP_3 concentrations. Hence, these results indicate that the significant parameter for long-distance wave propagation through nonlinear gap junctions is the presence of an IP_3 concentration threshold below which the junction is closed (this property is shared by the two nonlinear models), rather than the saturation of the transport at high IP_3 concentrations (found only in the sigmoid model).

Because the effects due to the different shapes of coupling curves could be conflated in the above observations, we computed the dependence of wave propagation range on the maximal strength of coupling, for linear vs. nonlinear coupling cases (Figure 4c). For the most part of the range of examined coupling strengths, Ca^{2+} wave propagation distance was significantly larger for the nonlinear case as compared to the linear case, ruling out the possibility that our findings are just a trivial confound. The only exceptions to this claim were noted for low F values (these dynamics at low coupling are studied thereafter) and for very small regions (around $F = 1.5$ and $F = 2.5$), where the propagation distances for both couplings were comparable. More importantly, Figure 4c evidences that linear gap junction fails to propagate long-distance Ca^{2+} waves (except in the “chaotic” low F domain).

Figure 4d illustrates propagation ranges in for FM cells when v_δ (max. rate of IP_3 production by $\text{PLC}\delta$) and r_{5P} (max. rate of IP_3 degradation by IP-5P) vary. We locate with black dots the (v_δ, r_{5P})

pairs for which Ca^{2+} waves propagate across the whole cell chain. Clearly, long-range propagation is found for a wide region of this parameter space. As expected, larger IP_3 synthesis rates must be balanced by larger IP_3 degradation rate to allow long range propagation, hence the diagonal-like aspect of the black region in the panel.

These first results thus indicate that the propagation distance of Ca^{2+} waves in our model is much smaller with linear gap junctions than with nonlinear ones. This observation remains valid when the number of cells in the chain is much larger (we have simulated up to 120 cells in the chains) or/and when up to the 20 first cells in the chain receive the stimulation simultaneously (not shown). The above results are also robust with respect to the changes in boundary conditions (see Methods). For instance, Figure S4 illustrates long-distance Ca^{2+} wave propagation for a chain of $N = 12$ FM-encoding astrocytes with periodic or absorbing boundary conditions and gap junctions endowed with sigmoid-like coupling.

This confirms that the difference of propagation distance between linear and nonlinear gap junction-coupling is a robust and fundamental property of our model. Hence, the existence of a threshold concentration for cell-to-cell IP_3 diffusion, similar to the one displayed by nonlinear gap junctions may be a critical factor for long-distance propagation of Ca^{2+} waves across astrocytes. In what follows, we examine the influence of a second physiological characteristic of Ca^{2+} signaling in astrocytes, namely their stimulus encoding mode (FM-encoding or AFM-encoding chains).

AFM vs. FM cells. As illustrated in Figure 5, Ca^{2+} waves do not propagate in our model of AFM-type astrocyte chains. In Figure 5, large Ca^{2+} variations are observed only in the driving cell (cell 1 in Figure 5), whereas the other astrocytes exhibit subthreshold Ca^{2+} changes or no Ca^{2+} change at all. Importantly, Figure 4b

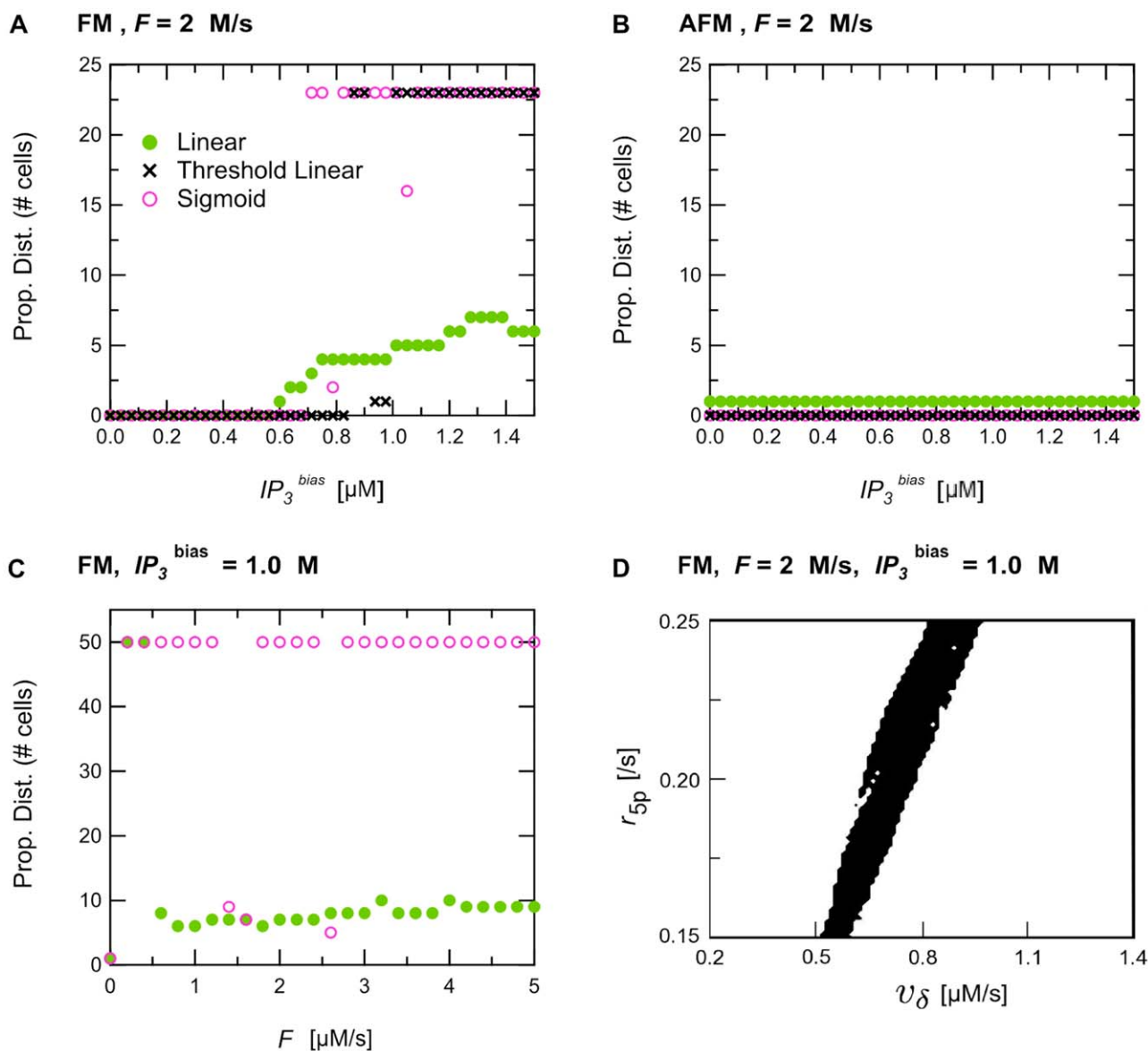


Figure 4. Traveled distance for the propagation of Ca^{2+} waves as a function of stimulus intensity. The stimulus is applied to the first cell and the traveled distance is expressed in number of cells. With moderate coupling strength ($F = 2 \mu\text{m/s}$) and $N = 25$ cells, long-range Ca^{2+} propagation is observed in the case of FM (a) but not AFM chains (b). Linear gap junctions (closed green circles) do not sustain propagation over long distances, whatever the encoding mode is. Long-range propagation is observed for AFM cells coupled by non-linear sigmoid (open magenta circles) or threshold-linear (times signs) gap junctions. Variation of the propagation range with F for 50 coupled FM cells ($IP_3^{\text{bias}} = 2.0 \mu\text{M}$) is shown in (c) for sigmoid and linear gap junctions. Panel (d) shows a map of the r_{5p} - v_δ parameter space, where black dots correspond to waves propagating over all the cells, while white areas locate non-propagating waves. In these figures, a wave was considered to have reached a given cell whenever the amplitude of calcium variations in this cell was larger than $0.6 \mu\text{M}$. Boundary conditions in these simulations were reflective.
doi:10.1371/journal.pcbi.1000909.g004

shows that this observation is not restricted to the parameters of Figure 5 but holds true whatever the stimulation strength of the driving cell or the nature of the connecting gap junctions are, i.e. linear or nonlinear. In particular Figure 4b reports propagation failure even when the stimulation applied to the driving cell is as strong as $IP_3^{\text{bias}} = 1.5 \mu\text{M}$, namely an intensity deeply inside the oscillatory region of the bifurcation diagrams in Figures S1a, c. This failure to propagate is not caused by a failure of IP_3 diffusion through gap junctions. First, in the case of nonlinear gap junctions, the stimulus strength is well beyond the diffusion threshold (IP_3^{thr}). Secondly, failure is also observed with linear gap junctions, where no coupling threshold can impede cell-to-cell diffusion. Hence the

propagation failure likely stems from an intrinsic inability of AFM astrocytes to build up sufficient intracellular IP_3 levels to trigger CICR in neighboring cells.

This intrinsic difference in the propagation properties brought about by AFM or FM modes can be explained on the basis of the single-cell bifurcation diagrams (Figures S1a, c). Indeed, in the AFM-encoding mode, the peak concentration of the IP_3 and Ca^{2+} oscillations decreases with decreasing IP_3 stimulations. Hence the IP_3 generation in AFM is such that a local depression of transmitted IP_3 will be accentuated in the next cell. Any decline of IP_3 production in a given cell will thus be transmitted outward and amplified along the chain, until the signal eventually fails. This

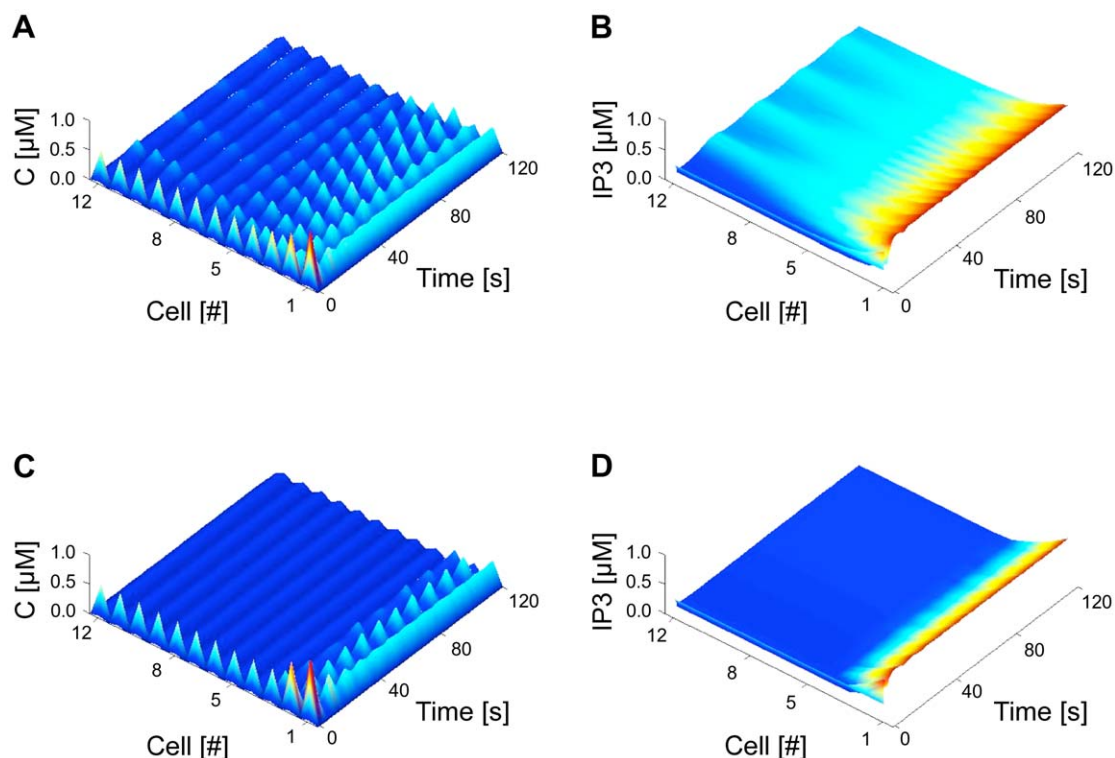


Figure 5. Propagation patterns for linear (a, b) and non-linear sigmoidal (c, d) gap junctions. The astrocyte chain was composed of 12 AFM astrocytes. Stimulus protocol and other parameters as in Figure 3. doi:10.1371/journal.pcbi.1000909.g005

phenomenon is not observed with FM cells because, by definition of the FM mode, the peak amplitude of the IP_3 oscillations in cell i is hardly dependent of the strength of the IP_3 stimulus coming from cell $i-1$ (at least in the limit where the incoming IP_3 stimulus falls within the oscillatory range of cell i). This simple mechanism guarantees that peak IP_3 values in cell i will remain high even though the incoming stimulation is lower. In other words, the FM mode guarantees robust regeneration of the wave propagation.

Moreover, the range of IP_3 input that gives rise to oscillations in the AFM encoding regime is much narrower than in the FM case. Thus, a perturbation of the IP_3 stimulation from cell i to $i+1$ in the AFM mode is more likely to be enough to push cell $i+1$ outside of its oscillatory range, leading to termination of wave propagation in this cell. Importantly, our simulations with AFM-encoding cell chains reported propagation failures for all the F values (Figure 4c) and (v_δ, r_{5P}) pairs that were tested (results not shown).

Therefore, these results suggest a neat functional difference between AFM and FM oscillations in astrocytes: while FM could support long distance propagation of pulse-like Ca^{2+} waves, AFM is rather expected to give rise to localized Ca^{2+} signalling with diffusion-like spatial patterns for IP_3 . Hence, any parameter relevant to *intra*-cellular Ca^{2+} signaling and able to switch the cell between AFM and FM modes (e.g. the affinity or activity of the SERCA pumps) is predicted to play a key role in the *inter*-cellular propagation of Ca^{2+} signals in astrocytes.

Propagation in composite chains. Because the astrocyte population within the brain is heterogeneous [49], the results reported above question the possibility of intercellular Ca^{2+} wave propagation across astrocytes with different properties. Here we tackled this issue using composite astrocyte chains, namely chains constituted of both FM and AFM cells, and investigated under what conditions propagation is possible with nonlinear sigmoid gap junctions.

In Figure 6, we simulated the first cell of the chain (cell 1) with a constant stimulus so as to initiate the Ca^{2+} wave in this cell. The intensity of the stimulus was set close to the upper edge of the cell oscillatory range according to the bifurcation diagrams in Figures S1c, d so as to maximize the chance of wave propagation. Figure 6a illustrates the propagation of the Ca^{2+} wave in a chain of alternating FM (black traces) and AFM (gray traces) cells and shows that propagation abruptly terminates at the second AFM cell in the chain (cell 4). Notably, closer inspection of IP_3 dynamics in the subsequent FM cell (i.e. cell 5 in Figure 6d) reveals that the IP_3 concentration intermittently passes across the predicted threshold for oscillations in this cell. However the time spent above the threshold is never large enough to trigger CICR, so that propagation halts. Extending propagation to further cells in the chain thus demands faster endogenous IP_3 production. This can for instance be obtained with larger values of the maximal rate of $\text{PLC}\delta$, v_δ , and/or smaller IP_3 degradation rates, v_{3K} and/or r_{5P} .

The former possibility is considered in Figures 6b,e. The simulation reported in these figures corresponds to the same conditions as in Figures 6a,d, except that v_δ is larger in AFM cells. Clearly, wave propagation now extends across the entire chain. Due to the increased rate of IP_3 production, all AFM cells in the chain in fact maintain intracellular IP_3 concentration either beyond or within the oscillatory range. Moreover, since this range essentially overlaps with the lower part of the oscillatory range for FM cells, the IP_3 transported from one AFM to the next FM cell in the chain can trigger CICR there, thus perpetuating propagation.

Another possible mechanism to facilitate wave propagation across AFM cells in heterogeneous conditions consists in increasing the frequency of the wave pulses in the FM cell preceding the AFM one. This effect is actually naturally obtained when several successive FM cells are placed between two AFM

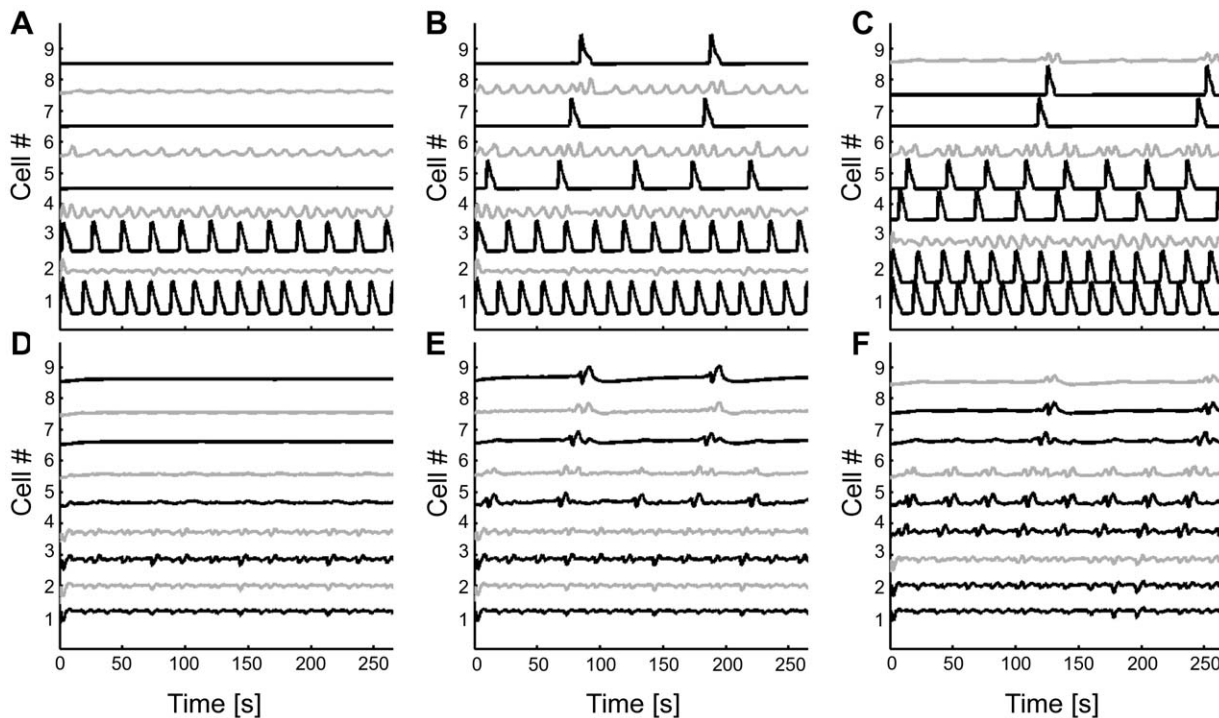


Figure 6. Calcium (a–c) and IP₃ (d–f) traces for wave propagation in composite astrocyte chains. *Black* traces locate FM cells while AFM cells are displayed with *gray* traces. (a, d) Alternating one FM with one AFM cell for example, may not allow propagation beyond the second AFM cell. (b, e) Larger propagation distances can be obtained by increasing the maximal rate of PLC δ in AFM cells. (c, f) Alternatively, longer traveling distances can be observed in chains where two AFM cells are separated by more than one FM cell. Parameters: a stimulus of $IP_3^{bias} = 1.2 \mu M$ was applied between $t = 10$ and $t = 300$ s on the first cell of the chain (i.e. cell 1). Other parameters: $v_s^{(AFM)} = 0.108 \mu M/s$; $v_s^{(FM)} = 0.832 \mu M/s$; $r_{sp} = 0.202 s^{-1}$; $IP_3^{thr} = 0.215 \mu M$; (b, e): $v_s^{(AFM)} = 0.15 \mu M/s$. In all these simulations, a 5-minute-long stimulus was applied. doi:10.1371/journal.pcbi.1000909.g006

ones. We illustrate this in Figures 6c,f, where the same conditions as in Figures 6a,d were used, except that one has now two successive FM cells between two AFM ones. The interactions between the two successive FM cells increase the frequency of the Ca²⁺ pulses, and thus the frequency of elementary diffusion events of IP₃ in the next AFM cell. In turn this increases both the frequency of the IP₃ oscillations in the AFM cell and their minimal level, thus allowing Ca²⁺ wave propagation in the subsequent FM cells.

The presence of homogenous FM cell domains between AFM cells is therefore likely to enable long traveling distances for propagating Ca²⁺ waves. One may even assume that if the number of successive FM cells in the FM domains is large enough, the Ca²⁺ wave should propagate over the entire network, whatever its size. Although we did not further investigate this possibility, our simulations hint on the contrary that there likely exists an upper bound for the travelling distance because the frequency of propagating Ca²⁺ waves in FM domains is not constant, but tend to decrease after each AFM cell, as can be seen by comparison of the pulse frequency in the Ca²⁺ traces of FM cells in Figures 6a–c. Indeed such progressive decay of the pulse frequency along the chain eventually brings forth insufficient IP₃ diffusion through gap junctions, thus terminating propagation (results not shown).

We note that modifications of the IP₃ threshold for diffusion in the nonlinear gap junctions, IP_3^{thr} , should facilitate transmission of Ca²⁺ pulses from cell to cell in the chain, thus increasing the frequency of propagation (Figure S5), with the possibility of observing very different dynamics of propagation in chains of identical astrocytes. Such scenario supports the notion that although nonlinear gap junctions could explain long-distance propagation, their specific properties are expected to be critical

factors for the dynamics of propagation. This aspect is further investigated in the next and last section of results of our study.

Propagation of complex waves

The Ca²⁺ and IP₃ dynamics observed so far were all obtained using a rather high value of the coupling strength ($F = 2.0 \mu M \cdot s^{-1}$). In these conditions, the properties of the propagated waves are rather simple: a pulse-like (or not) wave front travels across astrocytes, with conserved shape and either stops after a few cells or invades the whole cell chain. However, our system is a spatially extended dynamical system with large numbers of degrees of freedom. Such systems (e.g. coupled map lattices) are known to manifest complex spatiotemporal behaviors when the coupling strength changes. To get an insight on the possible propagation behavior exhibited by our model with weaker coupling, we considered the dynamics with reduced levels of gap junction permeability (setting $F = 0.23 \mu M \cdot s^{-1}$).

Figure 7 shows the Ca²⁺ dynamics of 41 coupled FM cells and a square wave periodic stimulation applied to the central cell #21 (see figure caption for details). Visual inspection of the Ca²⁺ traces in each cell (Figure 7a) indicates that such periodic (oscillatory) stimulation can trigger Ca²⁺ waves that can propagate along the whole chain. Importantly, this figure also evidences the occurrence of occasional propagation failures that do not seem to result from a simple spatiotemporal pattern. Actually, observation of the temporal traces of each individual cell reveals the occurrence of pulse-like events showing up with no apparent regularity. Accordingly, the distribution of the time-intervals between two such pulses can be very broad for some cells, with large intervals often almost as probable as small ones (see Figure S6).

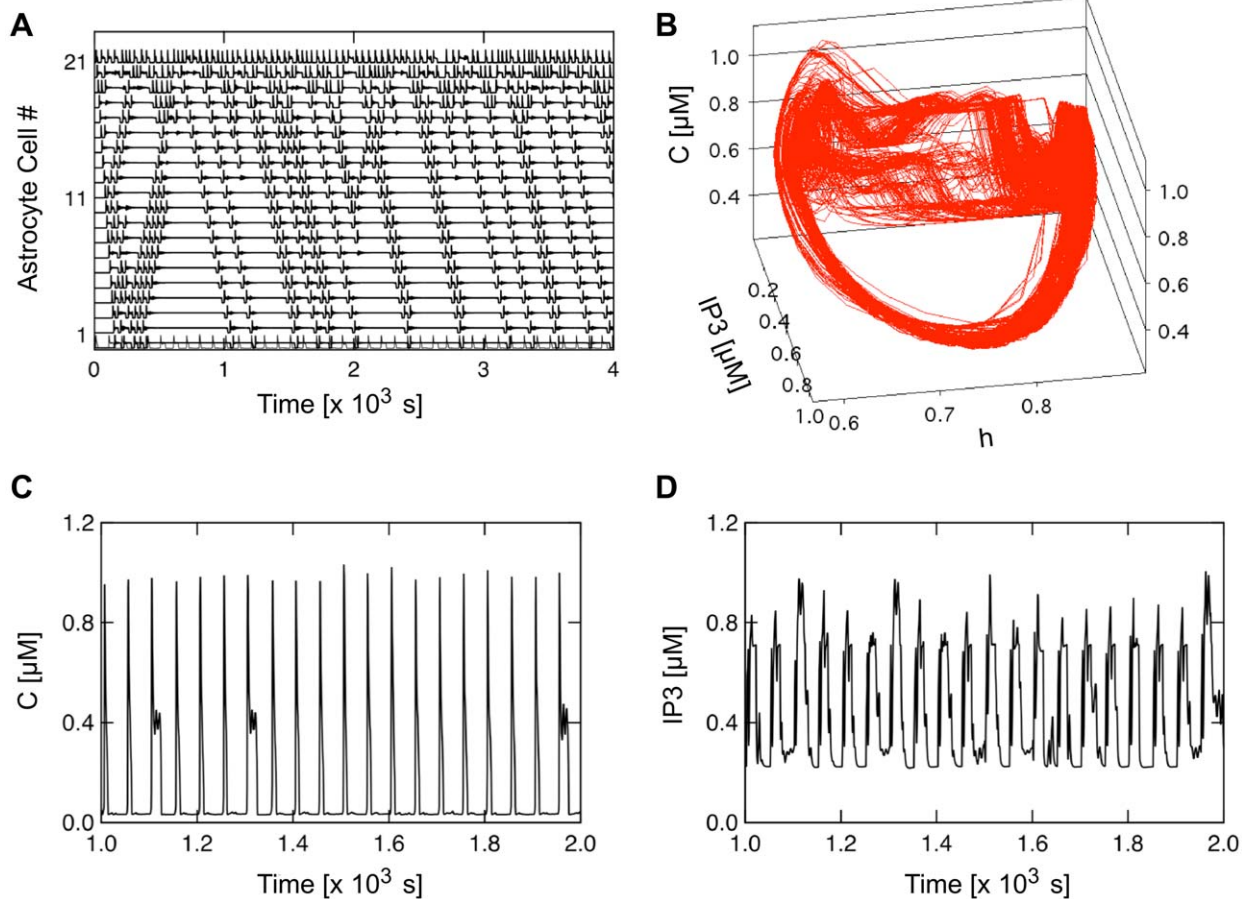


Figure 7. Complex behaviors at low coupling strength ($F = 0.23 \mu\text{M}\cdot\text{s}^{-1}$). The stimulus is an oscillatory input (positive square wave) applied to the central cell of an $N = 41$ cell chain. (a) Calcium concentration in cells 1 to 21 (cells 21 to 41, respectively, are identical). (b) The trajectory in the C - h - IP_3 phase space for cell 21 (i.e. the stimulated cell) and (c, d) the corresponding Ca^{2+} and IP_3 time series. Simulation performed on FM-encoding astrocytes with reflective boundary conditions and sigmoid gap junctions. Stimulus protocol: positive square wave of 50-second period and duty cycle of 0.4.
doi:10.1371/journal.pcbi.1000909.g007

Albeit consistently pulse-like, the shape of the propagated Ca^{2+} waves is also quite variable. Closer inspection of the time series for the driving cell (i.e. cell 21) for instance shows that the generated Ca^{2+} pulses vary from a single-peak waveform to multiple peaks per single pulse (Figure 7c). Furthermore, Figure 7d shows that the variability and complexity of the IP_3 signals is also very large. The lack of obvious regular behavior is particularly striking on movies showing the parallel temporal evolution of the Ca^{2+} and IP_3 level in each cell, as in Video S1 in the Supplementary Information.

To further illustrate the complexity of the obtained dynamics, we plot in Figure 7b the trajectory of the system in the phase space of the driving cell. It is very tempting to compare the resulting trajectories to those observed with classical low-dimensional strange attractors. In this regard, preliminary analysis of the three time series of the driving cell using nonlinear time series analysis tools [46] suggested that the dynamics indeed corresponds to deterministic chaos, with sensitivity to initial conditions testified by a positive maximal Lyapunov exponent that we estimated between 0.020 and 0.050 s^{-1} (depending on the time series under consideration).

The apparent complexity of the dynamics is most likely due to some form of spatiotemporal chaos, the nature of which is beyond the scope of the current article and is left to future work. But whatever the response, these simulations evidence that complex

Ca^{2+} wave propagation patterns can manifest at low couplings, even with spatially homogeneous cell properties and in the absence of any stochastic source.

Discussion

Calcium-mediated signalling is a predominant mode of communication between astrocytes [50]. Consequently, it is important to understand how different biophysical mechanisms determine the ability of these brain cells to communicate over long distances. Here, we used the computational modeling approach to study the properties of gap junction-mediated signaling in simple networks of realistically modeled astrocytes. Using numerical simulations and tools of bifurcation theory, we showed that long-distance regenerative Ca^{2+} wave propagation is possible when the gap junctions are rendered by nonlinear permeability but only when most of the model astrocytes are tuned to encode the strength of incoming IP_3 signal into frequency modulated Ca^{2+} oscillations.

There has been a long-standing debate over the nature and characteristics of intercellular Ca^{2+} waves observed in astrocyte networks. The present article concerns about the purely intracellular route, which involves the transfer of IP_3 molecules directly from cytosol to cytosol through gap junctions [23]. In the

extracellular route instead, propagation is mediated by extracellular diffusion of ATP and purinergic receptor activation [18,24]. Although these two routes need not be mutually exclusive, experiments indicated that their relative influences vary across the brain. Indeed, experimental evidence suggests that the purely intracellular route predominates in astrocytes of the neocortex [14,51] and the striatum [28] while the extracellular (purinergic-dependent) route seems predominant in the CA1 hippocampus area as well as in the corpus callosum [51]. Hence, the results obtained in the present paper are expected to be relevant to the former structures. Their relevance to the case where the two routes coexist could however be tested by simple extensions of our current model, in the spirit of the recent Ref. [52].

A critical issue for the modeling studies of intercellular Ca²⁺ waves is to explain the observed variability of Ca²⁺ wave travelling distance [14]. Indeed, experimental measurements show travelling distances varying from 30 cells [16] (that is, often outside the imaging microscope field) down to 3–4 cells only [15]. Models featuring purely regenerative waves (e.g. traveling waves in the usual mathematical sense) easily account for long distance propagations but hardly account for the observed short ones. Conversely, nonregenerative models (e.g. purely diffusive ones) cannot explain long-range propagation. A possible solution was suggested by Höfer et al. [32]. In the model proposed by these investigators, long-range propagating Ca²⁺ waves are obtained via IP₃ regeneration in each cell by Ca²⁺-activated PLC δ . However, whenever PLC δ maximal activity is lower, regeneration becomes partial and the Ca²⁺ wave propagation distance decreases. Yet this model does not include Ca²⁺-dependent IP₃ degradation, which could be critical for the occurrence of IP₃-mediated Ca²⁺ oscillations [33]. This latter process in particular, can compete with PLC δ -mediated IP₃ production, thus hindering IP₃ regeneration and Ca²⁺ wave propagation. This calls for additional factors to be taken into account to explain intercellular Ca²⁺ wave propagation.

A first prediction of our model is that, regenerative waves are possible in a network composed in its majority of astrocytes that encode information about incoming IP₃ signals in the frequency of their Ca²⁺ oscillations (FM). Interestingly, the response of astrocytes *in vivo* to IP₃ stimulation is known to exhibit high variability, both in frequency and amplitude [53–55]. This variability could be due to cell-to-cell heterogeneity (extrinsic noise) in some of the CICR parameters. In particular, this could include variability of the expression of PLC δ or of the affinity for Ca²⁺ of the SERCA pumps. To our knowledge, the kinetic properties of SERCA2b have never been measured in astrocytes. However the hypothesis that SERCA2b affinity for Ca²⁺ shows variability *in vivo* seems realistic, given the experimental literature. First, reports of experimental measurements of the SERCA2b affinity showed somewhat variable results, ranging from 170 [56] to 270 nM [57], albeit both studies used cDNA transfection in COS1 cells. Secondly, SERCA2b functionality can be directly modulated by quality-control chaperones of the ER, e.g. calreticulin and calnexin [58]. In particular, there exists strong indication that calreticulin may dynamically switch SERCA affinity for Ca²⁺ from 170 to ~400 nM [59]. In this case, cell-to-cell variability in the concentration of calreticulin could result in the mixed AFM-FM cell networks studied here. Our observations then lead to the experimental prediction that such variability or heterogeneity of the astrocyte response would have a strong impact on the propagation of intercellular calcium waves between these cells. Notably, this scenario is also supported by several experimental studies [21,60]. In particular, calreticulin has been shown to regulate Ca²⁺ wave propagation via direct interaction with SERCA2b thus modulation of Ca²⁺ uptake by this pump [61].

In our model, the strength and the transfer properties of the gap junction coupling are critical permissive factors that allow long-range intercellular signaling between the astrocytes. In particular, nonlinear gap junctions were found to significantly enhance the range of Ca²⁺ wave propagation (as opposed to the classic linear gap junctions that caused fast dissipation). Gap junctions with dynamic resistance are known to exist in cardiac networks [62,63] and in several other cells [35]. Yet there is currently no direct evidence for nonlinear transfer of second messenger molecules through gap junctions between astrocytes. Nonetheless, the activation of PKC, which is intimately related to IP₃ metabolism [33,64], is known to block astroglial gap junction communication and inhibit the spread of Ca²⁺ waves therein [65]. Hence, in light of the existing knowledge regarding the control of gap junctional permeability by various signaling molecules [66], it is plausible to assume that some nonlinearity should exist in astrocytes too. The exact form of the nonlinearity of course will be dictated by the properties of the solute and the nature of its interaction with the membrane channels in the proximity of the gap junction complex. Meanwhile, the generic form of nonlinear coupling that we considered here allowed us to get a qualitative insight into the putative effect of nonlinear coupling on signal propagation in model astrocyte networks.

In the present study, we considered a simplified setup of 1D network implemented as a regular chain of coupled cells. Such 1D chains display attractive aspects. In particular, we could proceed to a numerical bifurcation study of these 1D coupled-cell systems (see Figure S2), which has proven invaluable for the interpretation of the simulation results. Such bifurcation analysis would hardly be possible in higher dimensions (e.g. 2D), because the number of cells one needs to account for in 2D is much larger than in 1D at constant propagation distance. Furthermore, a serious study of a 2D system must include the exploration of the influence of the coupling network topology [67], which adds further parameters to the study of the robustness of the model dynamical features. However, real astrocytes in tissues are believed to organize in quasi 2D networks with significantly more complex structure. Our model is thus a simplification of this quasi 2D reality. For instance, obstruction of wave propagation could depend on the spatial dimension. Indeed in 2D or 3D reaction-diffusion systems or on random graphs, where the strength of the coupling or the local number of neighbors can vary across the network, the wave propagation distance can critically depend on the number of stimulated cells or the distribution of the number of coupled neighbors [68]. It is not yet clear whether our observation that linear gap junctions support only local wave propagation is restricted to regular 1D networks such as those used in the present work. Future works will be designed to tackle this issue. Nevertheless, in spite of its simplicity, this 1D model yields important predictions about the influence of the spatial arrangement of astrocytes. In particular, it shows that the distribution in space of heterogeneous gap junction permeabilities can result in rich dynamics [14,30]. Reducing the maximal strength of coupling between the model astrocytes imparted the individual cells with rich dynamics, possibly associated with spatiotemporal chaos. Keeping in mind that in reality the changes in gap junction permeability are mediated by the dynamic action of different effectors, we anticipate that a network of biological astrocytes could have the capacity to self-regulate the complexity of its dynamics. Whether or not this is the case, can be determined by experiments that selectively target the pathways of gap junction regulation.

Recent studies suggest that the astrocytes within the cortex form heterogeneous populations [69,70]. Therefore, we considered the

case of intercellular Ca²⁺ wave propagation in composite 1D networks, consisting of both FM- and AFM-encoding cells. Our simulations predict that the propagation dynamics and distance of intercellular Ca²⁺ waves critically depends both on the encoding property of the cells and on their spatial arrangement. Interestingly, the cell bodies of neighboring astrocytes within the brain are believed to distribute in space in a nonrandom orderly fashion called “contact spacing” [71,72]. Our study thus suggests a possible link between contact spacing and intercellular Ca²⁺ wave propagation in astrocyte networks. If, as suggested by our model, the spatial arrangement of the astrocytes, coupled to the heterogeneity of their response, conditions Ca²⁺ wave propagation, then contact spacing may play a critical role in intercellular wave propagations in the brain and the related computational properties of astrocyte networks.

It is now widely accepted that astrocytes and neurons are interwoven into complex networks and are engaged in an intricate dialogue, exchanging information on molecular level [3]. By releasing different gliotransmitters (such as glutamate and ATP) astrocytes dynamically modulate the excitability of neurons and control the flow of information at synaptic terminals [4]. Diffusion of glutamate and/or ATP is limited due to the action of glutamate transporters and degradation of ATP, thus defining spatiotemporal range for the local effect of astrocyte on neurons and synapses [73]. On the other hand, long-range and temporally delayed regulation of neuronal and synaptic activity by astrocytes is believed to be mediated by intercellular Ca²⁺ waves spreading through the astrocyte network. The connectivity of this astrocyte network is in turn defined by the patterns of electrical activity in neuronal network [74]. Thus, it appears that astrocytes and neurons are organized in networks that operate on distinct time scales and utilize the principles of feedback regulation to modulate the activities of each other. How such mutual regulation of neuronal and astrocytic networks affects the complexity of neuronal network dynamics in health and disease is a question that should be addressed by future combined experimental and modeling studies.

Supporting Information

Figure S1 Bifurcation analysis of an uncoupled (i.e. isolated) *ChI* astrocyte for AFM (a, c, e) and FM (b, d, f) encoding regimes. (a, b) 3D-rendering of bifurcation surfaces in the state space. AFM oscillation amplitude (c) and period (e) are controlled by a supercritical Hopf (H) bifurcation and a saddle-node limit cycle (SNC) bifurcation respectively. Conversely in FM-mode, the occurrence of a saddle-node on an invariant circle (SNIC) bifurcation accounts for the rise of arbitrarily-small frequency Ca²⁺ oscillations (f) at almost constant amplitude (d). Legend: (a, b): *black lines*: stable fixed points; *red dashed lines* unstable fixed points; *blue lines*: bifurcating limit cycles; semi-transparent *surfaces* denote envelopes of stable (*grey*) and unstable (*red*) oscillations. (c–f): *green*: IP₃; *orange*: Ca²⁺ (c) *full lines*: stable oscillations; *dashed lines*: unstable oscillations. Parameters as in Table 1.

Found at: doi:10.1371/journal.pcbi.1000909.s001 (4.70 MB TIF)

Figure S2 Bifurcation analysis of the astrocyte chain model for $N=7$ FM-encoding cells with sigmoid coupling and reflective boundary conditions. Calcium concentrations at steady states are shown for the central (stimulated) cell (*Cell 4*) and for cells 5, 6 and 7. Although not apparent in the figure, for IP₃^{bias} values larger than $\approx 0.8 \mu\text{M}$, the stable oscillations become far more complex than in the isolated case. This is due to a very rapid cascade of period-doubling bifurcations, which yields extremely complex limit cycles (with numerous folds) that could not be precisely rendered in

the figure (see also Section III.1.b). Moreover, for IP₃^{bias} $> 1.1 \mu\text{M}$, the amplitude of these limit cycles shrinks and numerical investigations evidenced the coexistence of multiple complex stable orbits. Legend: *thin full lines* locate unstable fixed points, and *thick full lines* stable one. *Full (open) circles* denote the envelopes of *stable (unstable)* limit cycles. Letters denote bifurcation type as in Figure S11.

Found at: doi:10.1371/journal.pcbi.1000909.s002 (1.66 MB TIF)

Figure S3 IP₃-triggered CICR-mediated propagation of a pulsed Ca²⁺ wave within a chain of five FM *ChI* astrocytes (A1–A5). (a) An IP₃ stimulation of constant intensity (IP₃^{bias} = 0.8 μM) is applied to cell A1 from $t = 10$ s to $t = 30$ s. This increases IP₃ concentration, thus triggering CICR from the ER and the generation of a Ca²⁺ pulse. (b) By means of communication through gap junctions, suprathreshold IP₃ from A1 can diffuse to A2, triggering CICR there. The process is essentially regenerative so that a Ca²⁺ pulse almost identical to the original one can be observed in the arrival cells. (c) As soon as the IP₃ influx to one cell from its neighbors is not sufficient to trigger CICR, the propagation stops. This is indeed the case of cells A4 and A5. Cells were coupled by sigmoid gap junctions and experienced reflective boundary conditions.

Found at: doi:10.1371/journal.pcbi.1000909.s003 (1.60 MB TIF)

Figure S4 Propagation patterns with non-linear sigmoid-like gap junctions in an astrocyte chain of 12 FM-encoding cells with periodic (a,b) or absorbing (c,d) boundary conditions. Stimulation triggered by IP₃^{bias} = 1.0 μM from $t = 0$ s to $t = 120$ s applied to the central cell (i.e. cell 6) (a,b) or the first cell in the chain (c,d).

Found at: doi:10.1371/journal.pcbi.1000909.s004 (5.58 MB TIF)

Figure S5 Calcium traces for wave propagation in composite astrocyte chains constituted of both FM (*black*) and AFM (*gray*) cells with (a) IP₃^{thr} = 0.215 μM or (b) IP₃^{thr} = 0.3 μM . The diffusion threshold is critical to determine the efficiency of transmission of Ca²⁺ waves along astrocyte chains. Other parameters as in Figure 7c.

Found at: doi:10.1371/journal.pcbi.1000909.s005 (2.04 MB TIF)

Figure S6 Interpulse interval distributions for the simulations shown in Figure 7 (main text). (a) Distributions for cells A1 to A10. (b) Distributions for cells A11 to A20. In several cells (e.g. cells A1, A2, A4 and A5), the distribution is broad, and large intervals are as commonly observed as smaller ones. Each panel indicates the number of pulses counted.

Found at: doi:10.1371/journal.pcbi.1000909.s006 (5.04 MB TIF)

Table S1 Parameter list and used values. The parameters of the Li-Rinzel core of the ChI model were taken according to previous studies [De Pittà *et al.* (2008) *Phys Rev E* 77: 030903(R); De Pittà *et al.* (2009) *Cogn Proc* 10:55 and De Pittà *et al.* (2009) *J Biol Phys* 35:38]. Gap junction parameters were chosen in order to allow sufficient diffusion of IP₃ across cell borders in order to trigger CICR in neighboring cells. With these parameters, Ca²⁺ and IP₃ oscillations in the simulations show amplitudes that are consistent with those reported in the literature [Politi *et al.* (2006) *Biophys J* 90:3120; Mishra and Bhalla (2002) *Biophys J* 83:1298]. When two values are indicated for the same parameter, the first one corresponds to AFM conditions, the second one to FM conditions.

Found at: doi:10.1371/journal.pcbi.1000909.s007 (0.05 MB DOC)

Text S1 Supplementary information text.

Found at: doi:10.1371/journal.pcbi.1000909.s008 (0.10 MB DOC)

Video S1 Illustration of the chaotic-like behavior at low coupling. This movie shows the evolution with time of the calcium

(upper panel, blue bars) and IP₃ (lower panel, green bars) concentration in each cell (x-axis) of a $N=24$ cell chain. The total duration represents 540 seconds of real time. Parameter values are the same as in Figure 7 (in particular, $F=0.23 \mu\text{M}\cdot\text{s}^{-1}$). Stimulation triggered by $IP_3^{\text{bias}}=1.0 \mu\text{M}$ from $t=0$ s to $t=540$ s applied to the first cell.

Found at: doi:10.1371/journal.pcbi.1000909.s009 (3.68 MB MPG)

References

- Herculano-Houzel S (2009) The human brain in numbers: a linearly scaled-up primate brain. *Front Hum Neurosci* 3: 1–11.
- Allen NJ, Barres BA (2009) Glia - more than just brain glue. *Nature* 457: 675–677.
- Volterra A, Meldolesi J (2005) Astrocytes, from brain glue to communication elements: the revolution continues. *Nat Rev Neurosci* 6: 626–640.
- Santello M, Volterra A (2009) Synaptic modulation by astrocytes via Ca²⁺-dependent glutamate release. *Neuroscience* 158: 253–259.
- Bezzi P, Volterra A (2001) A neuron-glia signalling network in the active brain. *Curr Opin Neurobiol* 11: 387–394.
- Agulhon C, Petravic J, McMullen AB, Sweger EJ, Minton SK, et al. (2008) What is the role of astrocyte calcium in neurophysiology? *Neuron* 59: 932–946.
- Codazzi F, Teruel MN, Meyer T (2001) Control of astrocyte Ca²⁺ oscillations and waves by oscillating translocation and activation of protein kinase C. *Curr Biol* 11: 1089–1097.
- Zonta M, Carmignoto G (2002) Calcium oscillations encoding neuron-to-astrocyte communication. *J Physiol Paris* 96: 193–198.
- Grosche J, Matyash V, Möller T, Verkhratsky A, Reichenbach A, et al. (1999) Microdomains for neuron-glia interaction: parallel fiber signaling to Bergmann glial cells. *Nature* 2: 139–143.
- Pasti L, Volterra A, Pozzan T, Carmignoto G (1997) Intracellular calcium oscillations in astrocytes: a highly plastic, bidirectional form of communication between neurons and astrocytes in situ. *J Neurosci* 17: 7817–7830.
- Dani JW, Chernjavsky A, Smith SJ (1992) Neuronal activity triggers calcium waves in hippocampal astrocyte networks. *Neuron* 8: 429–440.
- Cornell-Bell AH, Finkbeiner SM, Cooper MS, Smith SJ (1990) Glutamate induces calcium waves in cultured astrocytes: long-range glial signaling. *Science* 247: 470–473.
- Charles AC (1998) Intercellular calcium waves in glia. *Glia* 24(1): 39–49.
- Scemes E, Giaume C (2006) Astrocyte calcium waves: What they are and what they do. *Glia* 54: 716–725.
- Sul JY, Orosz G, Givens Rs, Haydon PG (2004) Astrocytic connectivity in the hippocampus. *Neuron Glia Biol* 1: 3–11.
- Tian GF, Takano T, Liu JHC, Wang X, Bekar L, et al. (2006) Imaging of cortical astrocytes using 2-photon laser scanning microscopy in the intact mouse brain. *Adv Drug Deliv Rev* 58: 773–787.
- Hirase H, Qian L, Barthó P, Buzsáki G (2004) Calcium dynamics of cortical astrocyte networks in vivo. *PLoS Biol* 2: 0494–0496.
- Newman EA, Zahs KR (1997) Calcium waves in retinal glial cells. *Science* 275: 844–847.
- Carmignoto G (2000) Reciprocal communication systems between astrocytes and neurones. *Prog Neurobiol* 62: 561–581.
- Berridge MJ (1997) The AM and FM of calcium signaling. *Nature* 389: 759–760.
- Camacho P, Leichleiter JD (1993) Increased frequency of calcium waves in *Xenopus laevis* oocytes that express a calcium-ATPase. *Science* 260: 226–229.
- Schipke CG, Heidenmann A, Skupin A, Peters O, Falcke M, et al. (2008) Temperature and nitric oxide control spontaneous calcium transients in astrocytes. *Cell Calcium* 43: 285–295.
- Giaume C, Venance L (1998) Intracellular calcium signaling and gap junctional communication in astrocytes. *Glia* 24: 50–64.
- Guthrie PB, Knappenberger J, Segal M, Bennett MVL, Charles AC, et al. (1999) ATP released from astrocytes mediates glial calcium waves. *J Neurosci* 19: 520–528.
- Charles AC, Dirksen ER, Merrill JE, Sanderson MJ (1991) Intercellular signalling in glial cells: calcium waves and oscillations in response to mechanical stimulation and glutamate. *Neuron* 6: 983–992.
- Finkbeiner SM (1993) Glial calcium. *Glia* 9: 83–104.
- Kettenmann H, Schipke CG (2004) Calcium signaling in glia. In: Hatton GI, Parpura V, eds. *Glial-neuronal signaling* Kluwer Academic Publisher. pp 297–322.
- Venance L, Stella N, Glowinski J, Giaume C (1997) Mechanism involved in initiation and propagation of receptor-induced intercellular calcium signaling in cultured rat astrocytes. *J Neurosci* 17: 1981–1992.
- Sneyd J, Wetton BTR, Charles AC, Sanderson MJ (1995) Intercellular calcium waves mediated by diffusion of inositol trisphosphate: a two-dimensional model. *Am J Physiol* 268: C1537–C1545.
- Falcke M (2004) Reading the patterns in living cells - the physics of Ca²⁺ signaling. *Adv Phys* 53: 255–440.
- Harootunian AT, Kao JPY, Paranjape S, Tsien RY (1991) Generation of calcium oscillations in fibroblasts by positive feedback between calcium and IP₃. *Science* 251: 75–78.
- Höfer T, Venance L, Giaume C (2002) Control and plasticity of intercellular calcium waves in astrocytes: a modeling approach. *J Neurosci* 22: 4850–4859.
- De Pittà M, Goldberg M, Volman V, Berry H, Ben-Jacob E (2009) Glutamate-dependent intracellular calcium and IP₃ oscillating and pulsating dynamics in astrocytes. *J Biol Phys* 35: 383–411.
- Li Y, Rinzel J (1994) Equations for InsP₃ receptor-mediated [Ca²⁺]_i oscillations derived from a detailed kinetic model: A Hodgkin-Huxley like formalism. *J Theor Biol* 166: 461–473.
- Harris AL (2001) Emerging issues of connexin channels: biophysics fills the gap. *Q Rev Biophys* 34: 325–472.
- Nagy JI, Rash JE (2000) Connexins and gap junctions of astrocytes and oligodendrocytes in the CNS. *Brain Res Rev* 32: 29–44.
- Lampe PD, Tenbroek EM, Burt JM, Kurata WE, Johnson RG, et al. (2000) Phosphorylation of connexin43 on serine368 by protein kinase C regulates gap junctional communication. *J Cell Biol* 149: 1503–1512.
- Kwak B, Hermans MMP, DeJonge H, Lohmann S, Jongma HJ, et al. (1995) Differential regulation of distinct types of gap junction channels by similar phosphorylating conditions. *Molec Biol Cell* 6: 1707–1719.
- Müller T, Möller T, Neuhaus J, Kettenmann H (1996) Electrical coupling among Bergmann glial cells and its modulation by glutamate receptor activation. *Glia* 17: 274–284.
- Scemes E (2001) Components of astrocytic intercellular calcium signaling. *Mol Neurobiol* 22: 167–179.
- Sanderson MJ, Charles AC, Boitano S, Dirksen ER (1994) Mechanisms and function of intercellular calcium signaling. *Mol Cell Endocrinol* 98: 173–187.
- Christ C, Brink PR, Ramanan SV (1994) Dynamic gap junctional communication: a delimiting model for tissue responses. *Biophys J* 67: 1335–1344.
- Henriquez AP, Vogel R, Muller-Borer BJ, Henriquez CS, Weingart R, et al. (2001) Influence of dynamic gap junction resistance on impulse propagation in ventricular myocardium: A computer simulation study. *Biophys J* 81: 2112–2121.
- Klein CT, Seelig FF (1995) Turing structures in a system with regulated gap-junctions. *Biosystems* 35: 15–23.
- Irvine RF, Letcher AJ, Heslop JP, Berridge MJ (1986) The inositol tris/tetrakisphosphate pathway – demonstration of Ins(1,4,5)P₃ 3-kinase activity in animal tissues. *Nature* 320: 631–634.
- Hegger R, Kantz H, Schreiber T (1999) Practical implementation of nonlinear time series methods: The TISEAN package. *Chaos* 9: 413–435.
- De Pittà M, Volman V, Levine H, Pioggia G, De Rossi D, et al. (2008) Coexistence of amplitude and frequency modulations in intracellular calcium dynamics. *Phys Rev E* 77: 030903(R).
- De Pittà M, Volman V, Levine H, Ben-Jacob E (2009) Multimodal encoding in a simplified model of intracellular calcium signaling. *Cogn Proc* 10: 55–70.
- Kimelberg HK (2004) The problem of astrocyte identity. *Neurochem Int* 45: 191–202.
- Nimmerjahn A (2009) Astrocytes going live: advances and challenges. *J Physiol* 587: 1639–1647.
- Haas B, Schipke CG, Peters O, Söhl G, Willecke K, et al. (2006) Activity-dependent ATP-waves in the mouse neocortex are independent from astrocytic calcium waves. *Cereb. Cortex* 16: 237–246.
- Edwards JR, Gibson WG (2010) A model for Ca²⁺ waves in networks of glial cells incorporating both intercellular and extracellular communication pathways. *J Theor Biol* 263: 45–58.
- Young KW, Nash MS, Challiss JRA, Nahorski SR (2003) Role of Ca²⁺ feedback on single cell inositol 1,4,5-trisphosphate oscillations mediated by G-protein-coupled receptors. *J Biol Chem* 278: 20753–20760.
- Nash MS, Young KW, Challiss JRA, Nahorski SR (2001) Intracellular signalling receptor-specific messenger oscillations. *Nature* 413: 381–382.
- Hirose K, Kadowaki S, Tanabe M, Takeshima H, Lino M (1999) Spatiotemporal dynamics of inositol 1,4,5-trisphosphate that underlies complex Ca²⁺ mobilization. *Science* 284: 1527–1530.
- Verboomen H, Wuytack F, De Smedt H, Himpens B, Casteels R (1992) Functional difference between SERCA2a and SERCA2b Ca²⁺ pumps and their modulation by phospholamban. *Biochem J* 286: 591–596.

Acknowledgments

The authors wish to thank Vladimir Parpura, Giorgio Carmignoto and Ilyia Bezprozvanny and Herbert Levine for insightful conversations.

Author Contributions

Conceived and designed the experiments: MG MDP VV HB EBJ. Performed the experiments: MG MDP HB. Analyzed the data: MG MDP VV HB EBJ. Wrote the paper: MDP VV HB EBJ.

57. Lytton J, Weslin M, Burk SE, Schull GE, MacLennan DH (1992) Functional comparison between isoforms of the sarcoplasmic or endoplasmic reticulum family of calcium pumps. *J Biol Chem* 267: 14483–14489.
58. Papp S, Dziak E, Michalak M, Opas M (2003) Is all of the endoplasmic reticulum created equal? The effects of the heterogeneous distribution of endoplasmic reticulum Ca²⁺-handling proteins. *J Cell Biol* 160: 475–479.
59. Baker HL, Errington RJ, Davies SC, Campbell AK (2002) A mathematical model predicts that calreticulin interacts with the endoplasmic reticulum Ca²⁺-ATPase. *Biophys J* 82: 582–590.
60. Rebecchi MJ, Pentyala SN (2000) Structure, function, and control of phosphoinositide-specific phospholipase C. *Physiol Rev* 80: 1291–1335.
61. Lechleiter JLM, Camacho P (1998) Differential modulation of SERCA2 isoforms by calreticulin. *J Cell Biol* 142: 963–973.
62. Henriquez AP, Vogel R, Müller-Borer BJ, Henriquez CS, Weingart R, et al. (2001) Influence of dynamic gap junction resistance on impulse propagation in ventricular myocardium: a computer simulation study. *Biophys J* 81: 2112–2121.
63. Banach K, Weingart R (1996) Connexin43 gap junctions exhibit asymmetrical gating properties. *Pflügers Arch* 431: 775–785.
64. Sim SS, Kim JW, Rhee SG (1990) Regulation of D-myo-inositol 1,4,5-trisphosphate 3-kinase by cAMP-dependent protein kinase and protein kinase C. *J Biol Chem* 265: 10367–10372.
65. Enkvist MO, McCarthy KD (1992) Activation of protein kinase C blocks astroglial gap junction communication and inhibits the spread of calcium waves. *J Neurochem* 59: 519–526.
66. Rouach N, Avignone E, Meme W, Koulakoff A, Venance L, et al. (2002) Gap junctions and connexin expression in the normal and pathological central nervous system. *Biol Cell* 94: 457–475.
67. Dokukina IV, Gracheva ME, Grachev EA, Gunton JD (2008) Role of network connectivity in intercellular calcium signaling. *Physica D* 237: 745–754.
68. Volman V, Perc M (2010) Fast random rewiring and strong connectivity impair subthreshold signal detection in excitable networks. *New J Phys* 12: 043013.
69. Houades V, Rouach N, Ezan P, Kirchhoff F, Koulakoff A, et al. (2006) Shapes of astrocyte networks in the juvenile brain. *Neuron Glia Biol* 2: 3–14.
70. Walz W (2000) Controversy surrounding the existence of discrete functional classes of astrocytes in adult gray matter. *Glia* 31: 95–103.
71. Dreher Z, Tout S, Stone J (1994) Interactions of living astrocytes in vitro: Evidence of the development of contact spacing. *Glia* 11: 56–63.
72. Chan-Ling T, Stone J (1991) Factors determining the morphology and distribution of astrocytes in the cat retina: A contact-spacing model of astrocyte interaction. *J Comp Neurol* 303: 387–399.
73. Fellin T, Gonzalo MG, Gobbo S, Carmignoto G, Haydon PG (2006) Astrocytic glutamate is not necessary for the generation of epileptiform neuronal activity in hippocampal slices. *J Neurosci* 26: 9312–9322.
74. Aguado F, Espinosa-Parrilla JF, Carmona MA, Soriano E (2002) Neuronal activity regulates correlated network properties of spontaneous calcium transients in astrocytes in situ. *J Neurosci* 22: 9430–9444.
75. Communi D, Vanweyenberg V, Erneux C (1995) Molecular study and regulation of D-myo-inositol 1,4,5-trisphosphate 3-kinase. *Cell Signal* 7: 643–650.