



HAL
open science

Classification aided two stage localization

Hedi Harzallah, Cordelia Schmid, Frédéric Jurie, Adrien Gaidon

► **To cite this version:**

Hedi Harzallah, Cordelia Schmid, Frédéric Jurie, Adrien Gaidon. Classification aided two stage localization. PASCAL Visual Object Classes Challenge Workshop, in conjunction with ECCV, Oct 2008, Marseille, France. 2008. inria-00548652

HAL Id: inria-00548652

<https://inria.hal.science/inria-00548652v1>

Submitted on 20 Dec 2010

HAL is a multi-disciplinary open access archive for the deposit and dissemination of scientific research documents, whether they are published or not. The documents may come from teaching and research institutions in France or abroad, or from public or private research centers.

L'archive ouverte pluridisciplinaire **HAL**, est destinée au dépôt et à la diffusion de documents scientifiques de niveau recherche, publiés ou non, émanant des établissements d'enseignement et de recherche français ou étrangers, des laboratoires publics ou privés.

Classification aided two stage localization

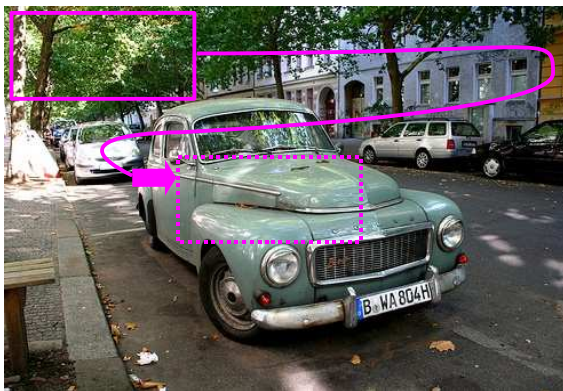
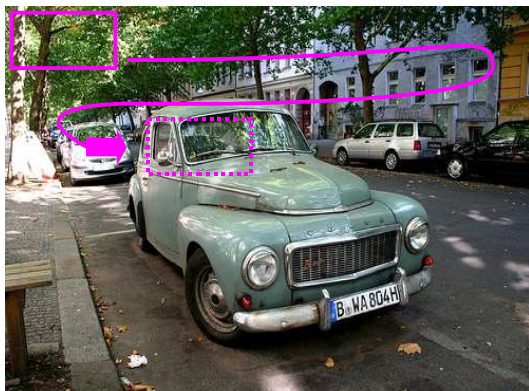
Hedi Harzallah, Cordelia Schmid, Frederic Jurie, Adrien Gaidon

INRIA, LEAR project team

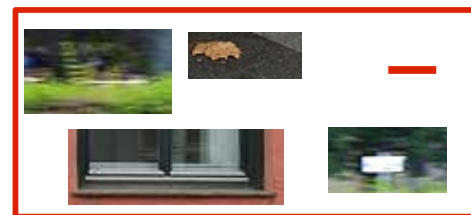
PASCAL VOC2008 challenge workshop

Introduction

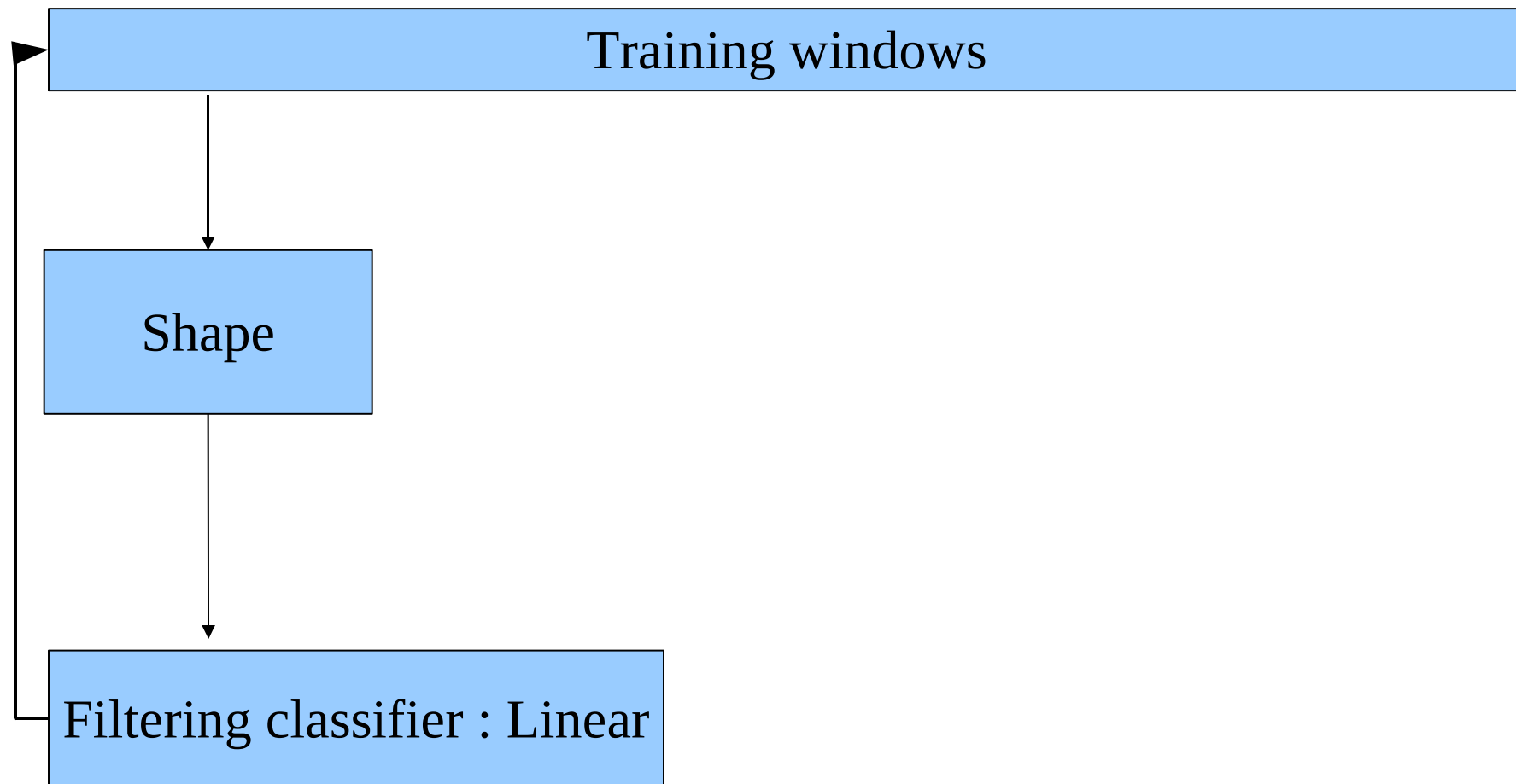
- Detection task on PASCAL VOC2008 challenge
- Method with sliding windows (Each window is classified as containing or not the targeted object)



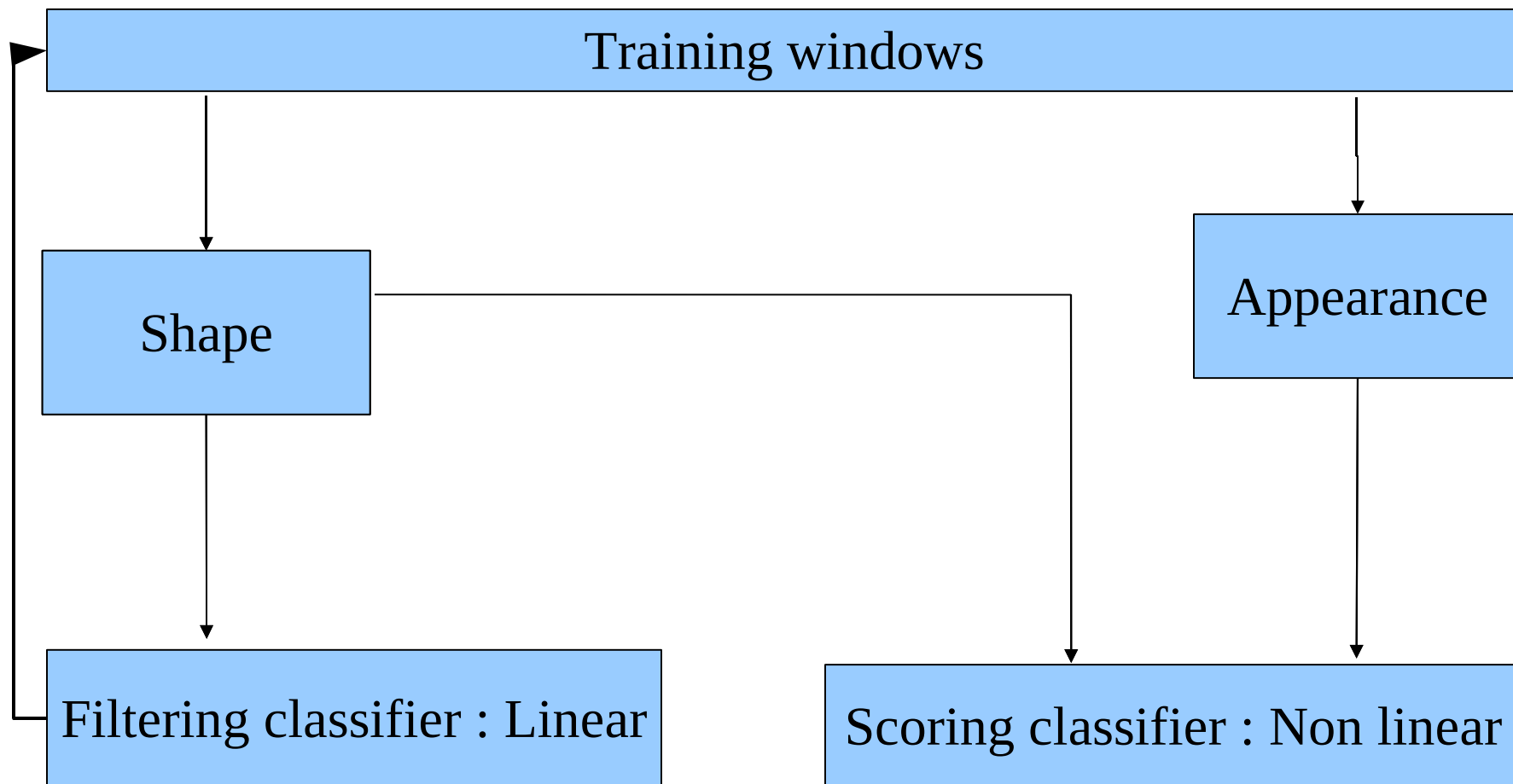
- Learn a classifier by providing positive and negative examples



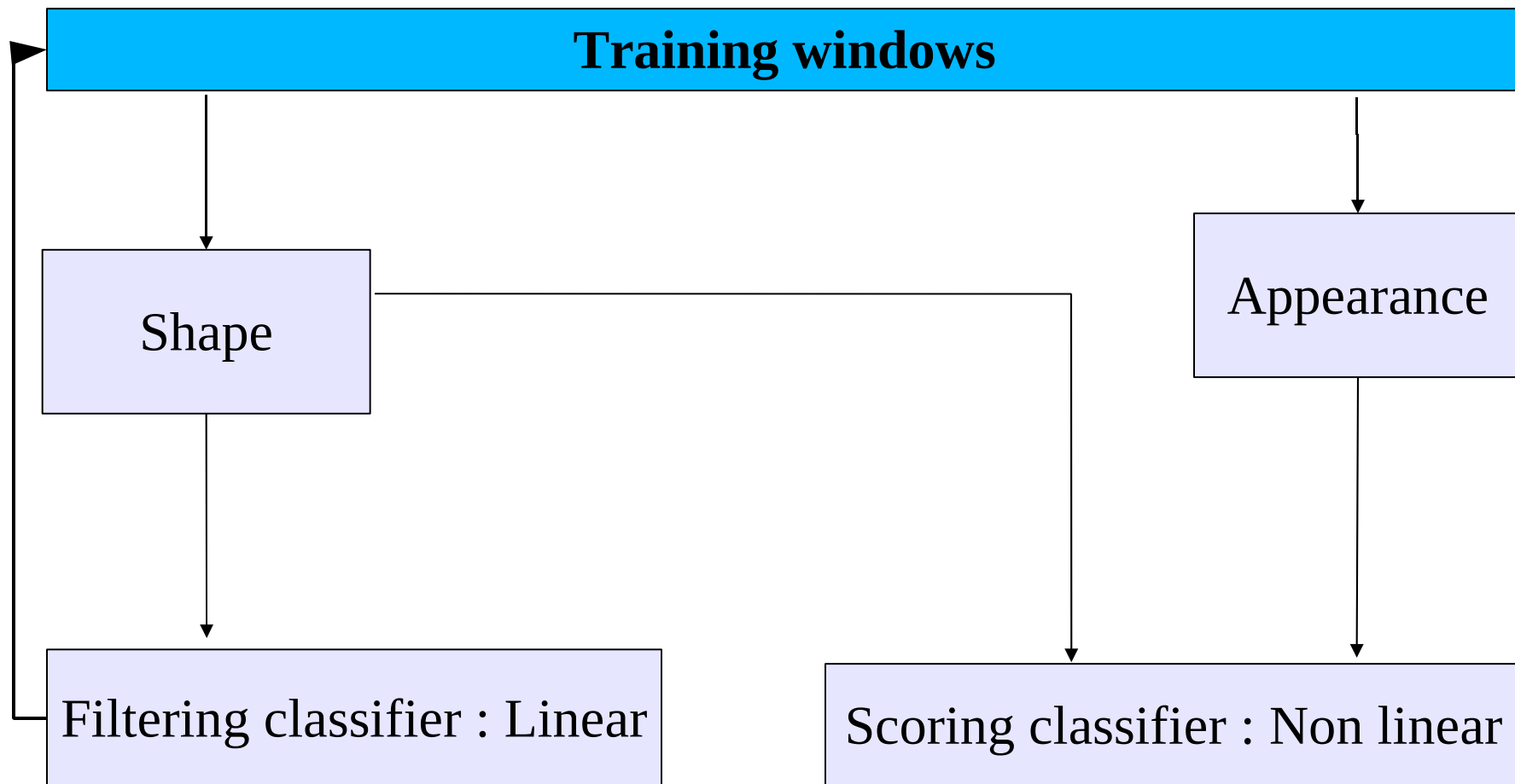
Training outline



Training outline

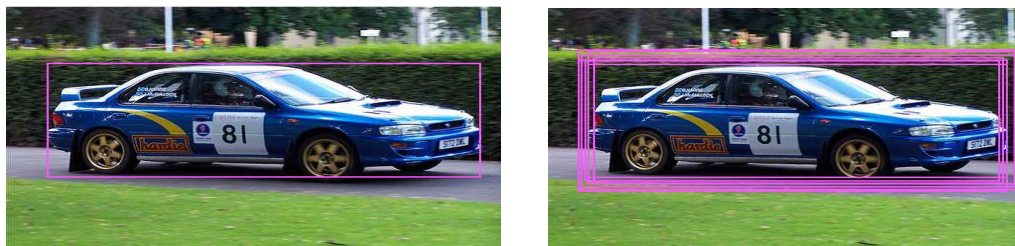


Generating training windows

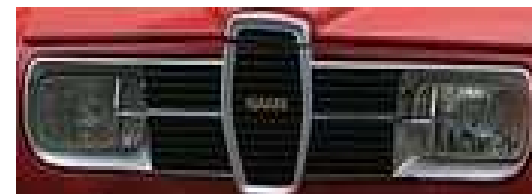
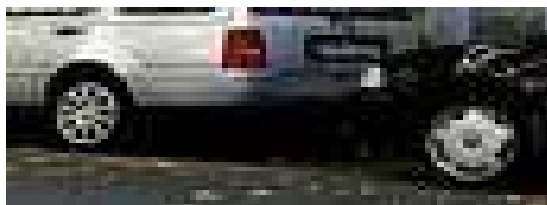


Generating training windows

- Adding positive training examples by shifting and scaling the original annotations [Laptev06]



- Negative examples randomly extracted from background
- Training an initial classifier
- Retraining 4 times by adding false positives



Examples of false positives

Image representation

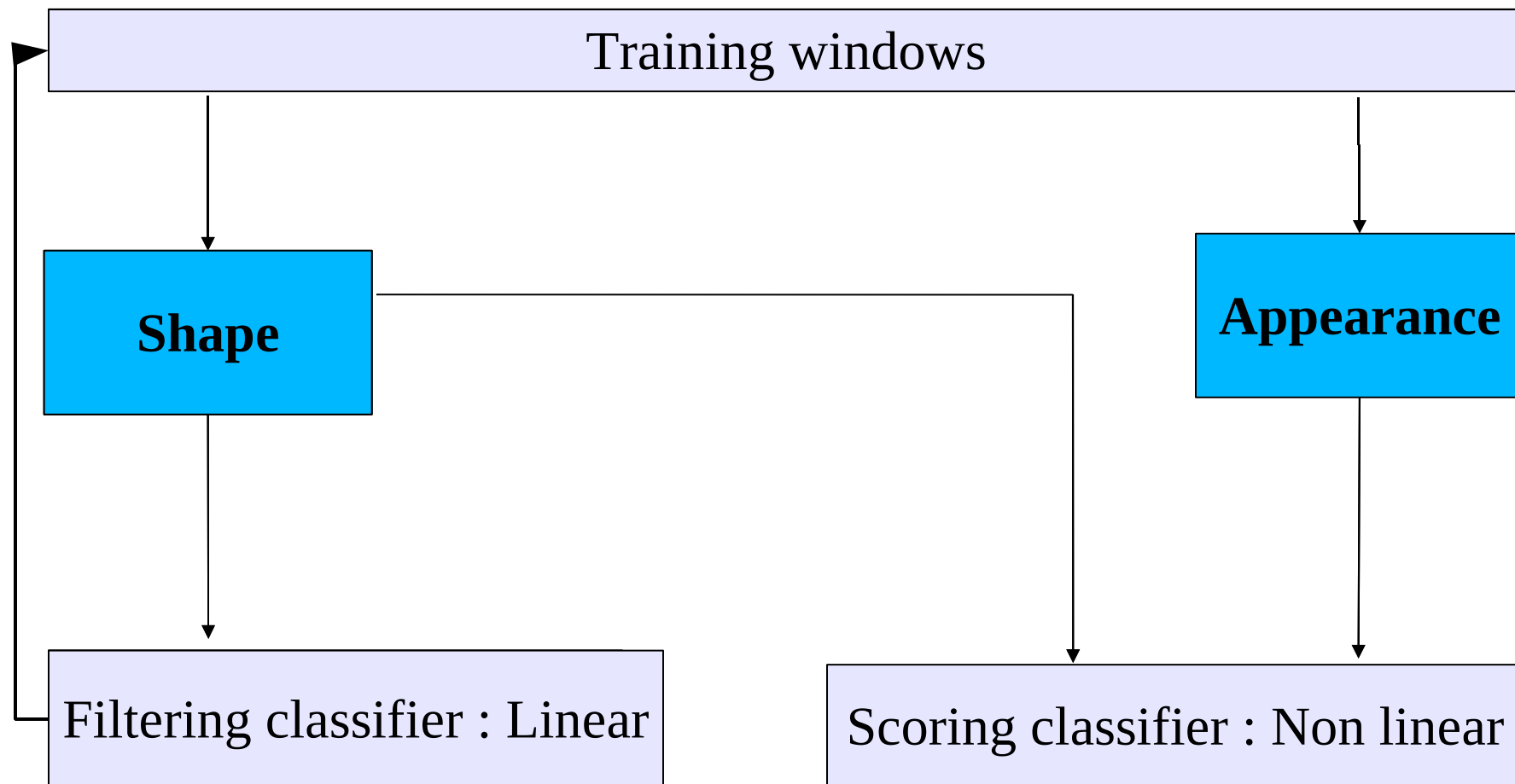
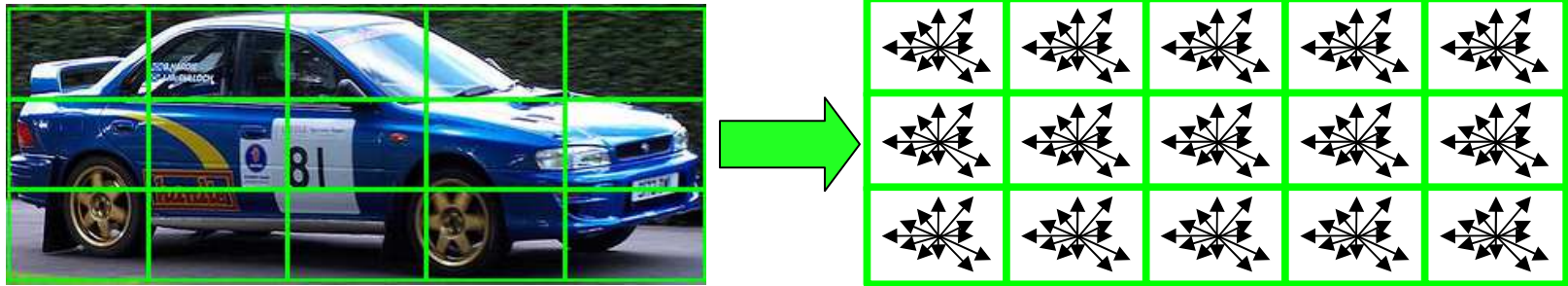


Image representation: Histogram-of-gradients (HOG)

- Tiling optimized per class (around 100 overlapping tiles)



- Computed with integral histograms
- With 16 orientations

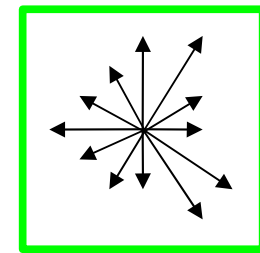
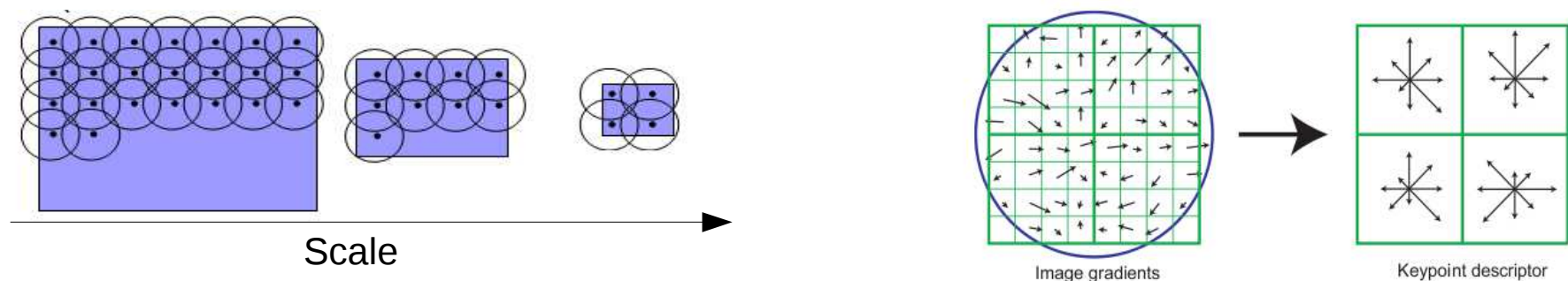
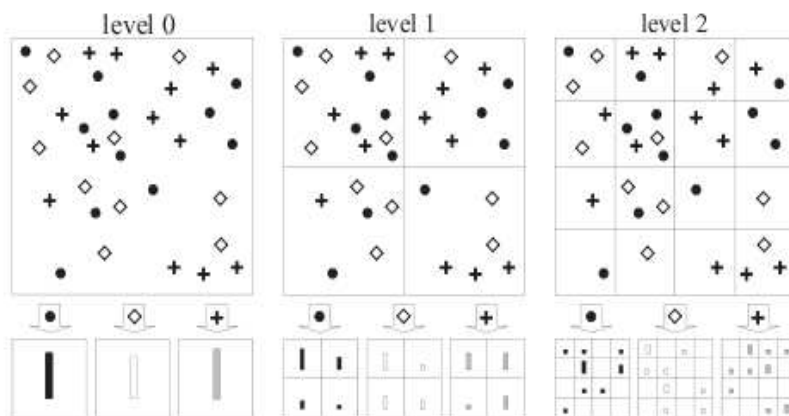


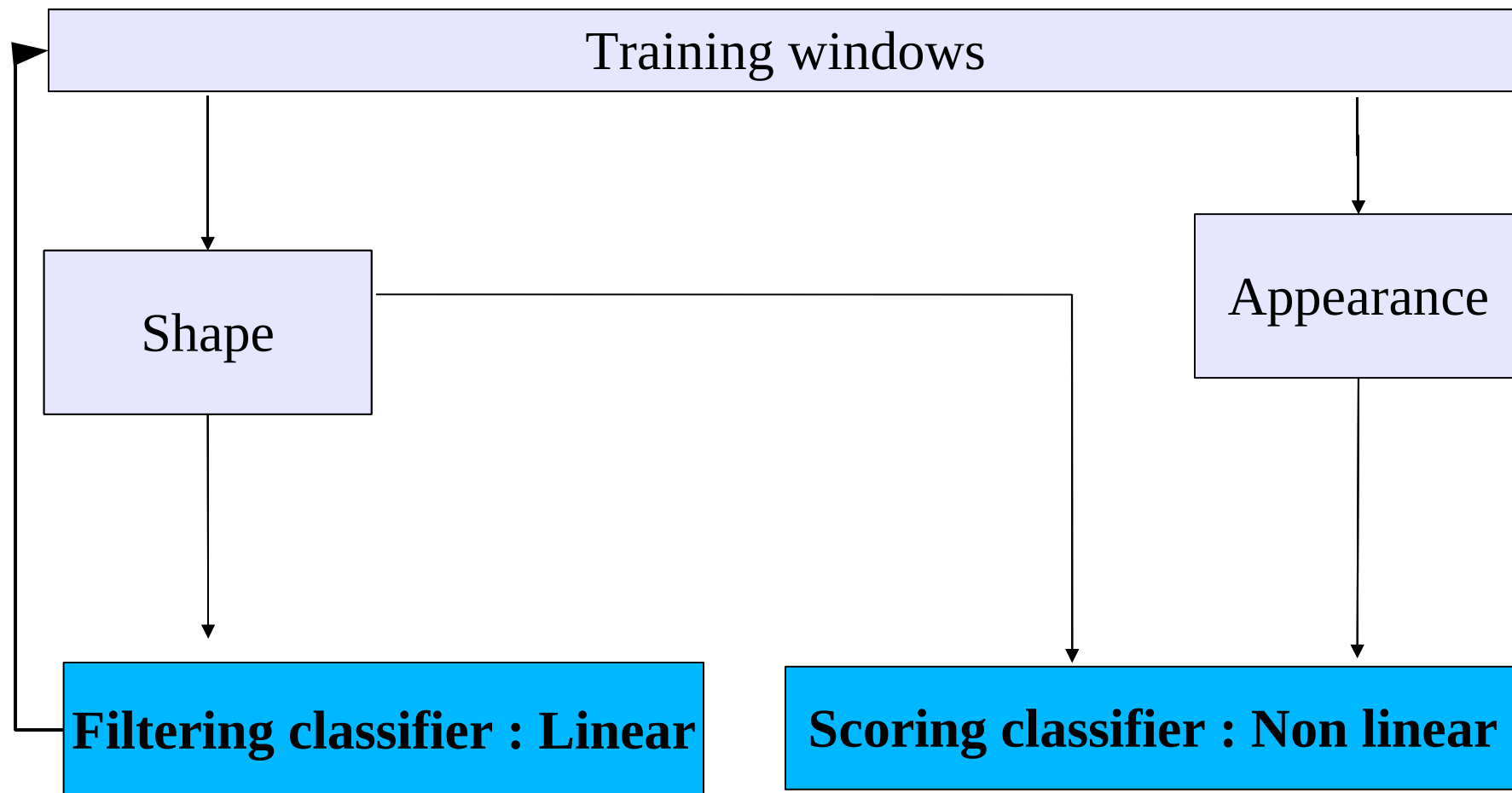
Image representation : Dense SIFT



- Computed over dense patches (shift step 6 pixels, scale step 1.2)
- Discretized into 100 visual words using k-means
- Used as BOW with a spatial pyramid [Lazebnik06]



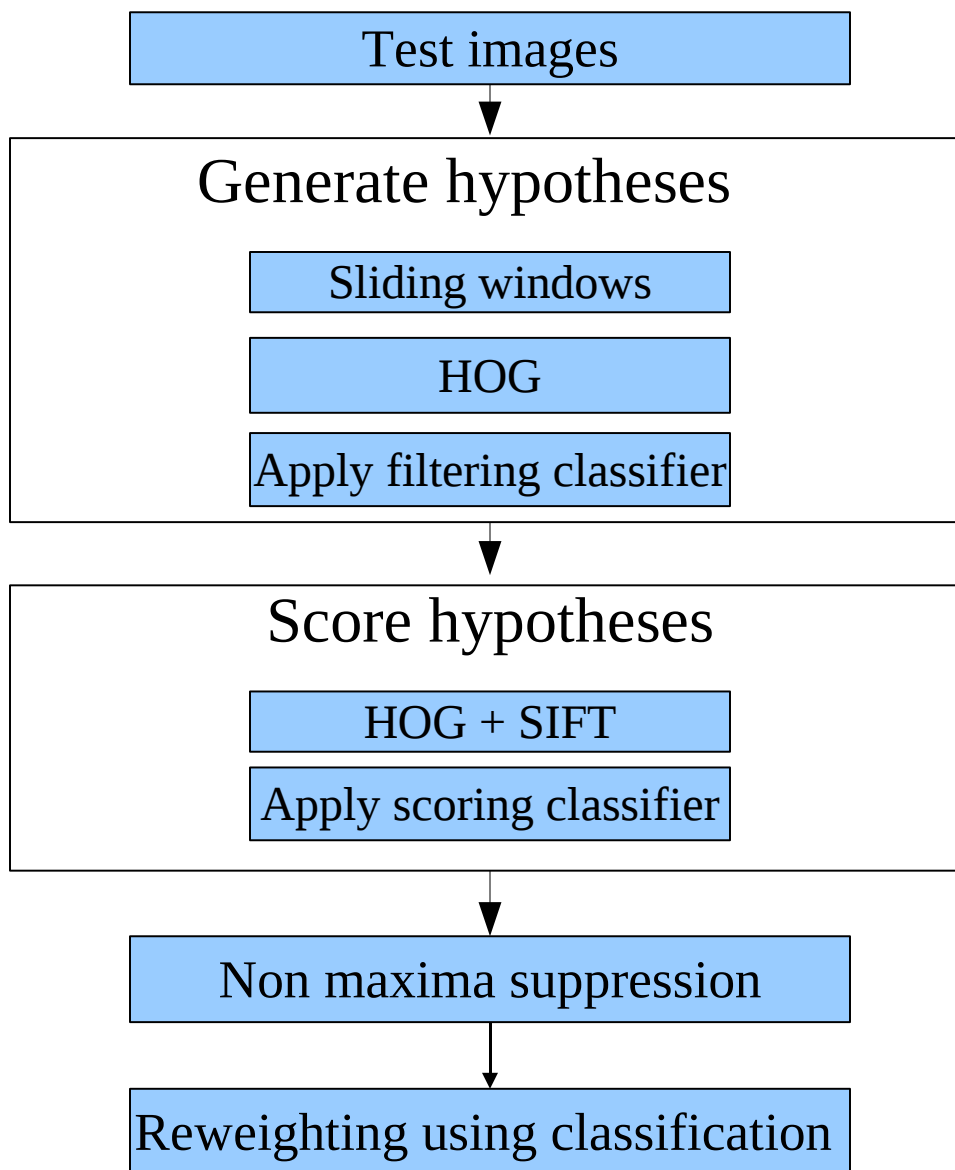
Learning procedure



Learning procedure

- Training one classifier per view (Side, Front/Rear, Unspecified)
- Linear SVM classifier
 - HOG only (combining with SIFT gives minor gain at high cost)
- Non Linear SVM classifier
 - We use non linear X^2 kernel SVM [Zhang et al 2007]
 - Training with:
 - Examples used in the linear case (positives + shifted positives + hard false positives)
 - Additional random 70K negative examples

Testing outline



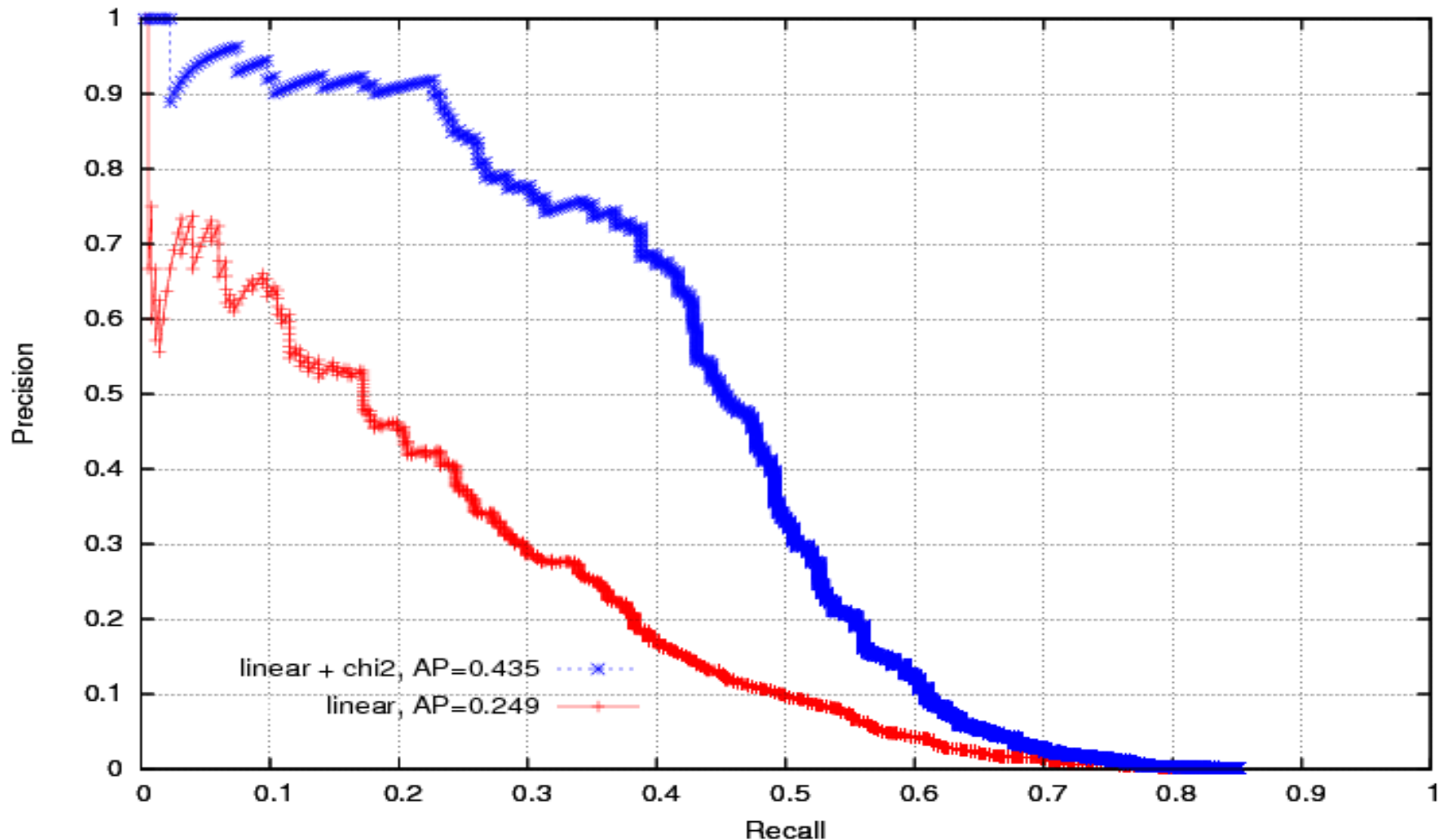
Evaluation of linear/non linear SVM

- Using HOG only to learn the non linear classifier
- Linear classifier used not only for filtering but also for scoring

	Linear	Linear + X^2
All classes	0.139	0.220
aeroplane	0.039	0.184
horse	0.249	0.435
diningtable	0.096	0.108
pottedplant	0.100	0.118

Evaluation of linear/non linear SVM

Precision recall curve for the class horse using HOG features

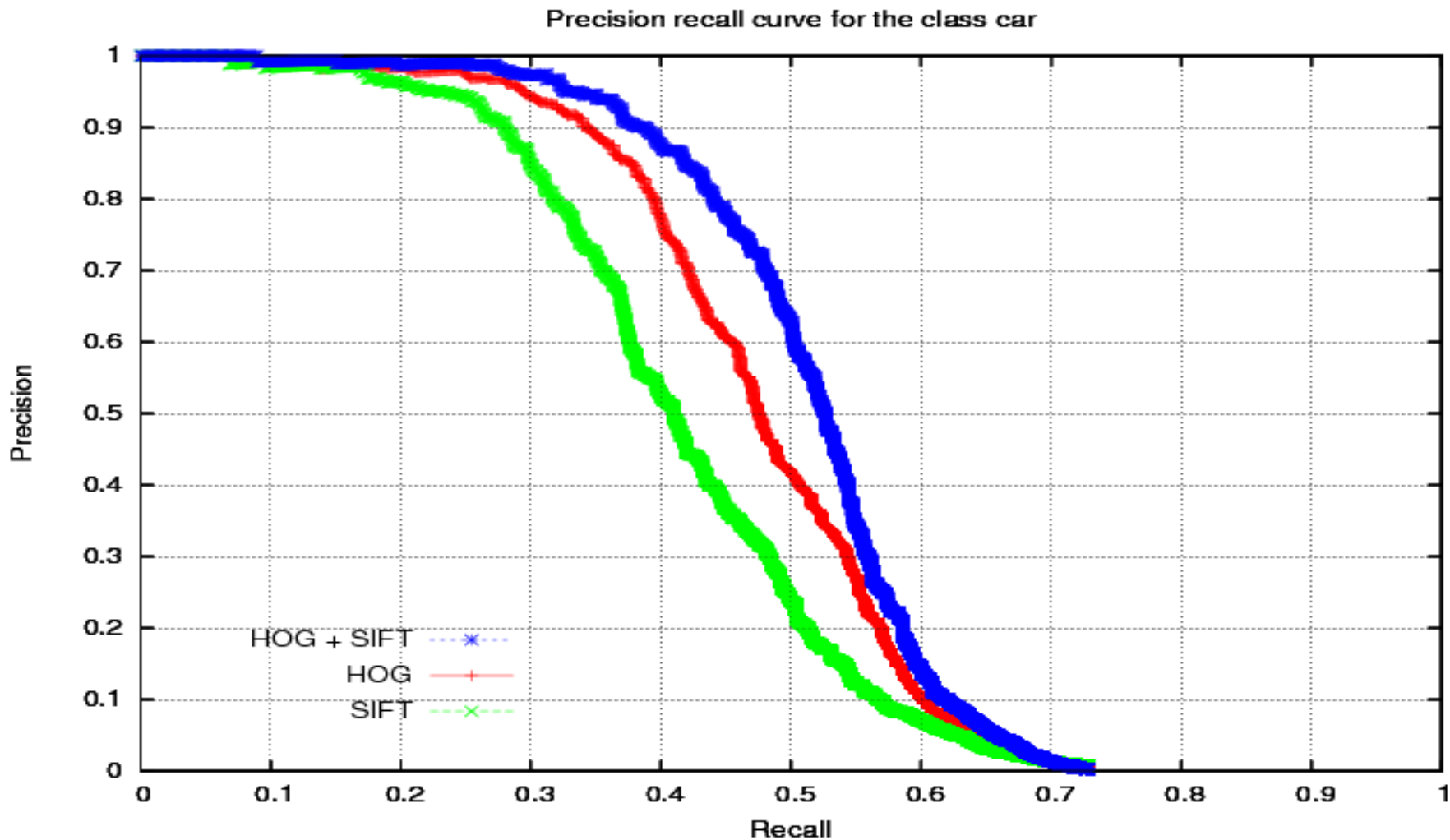


Evaluation of descriptors

- Scoring classifiers learned with different features
- Applied on the same hypotheses

	HOG	SIFT	HOG+SIFT
All classes	0.220	0.231	0.264
aeroplane	0.184	0.298	0.338
car	0.475	0.425	0.511
train	0.318	0.344	0.291
bus	0.432	0.397	0.423

Evaluation of descriptors



Combining localization and image classification

- Provides contextual information
- Results are more reliable in image classification
- Transform scores into probabilities
- New score = $P(\text{det}) * P(\text{cls})$

Influence of the use of image classification score

- We use the Lear_flat submission [Gaidon and Marszalek]

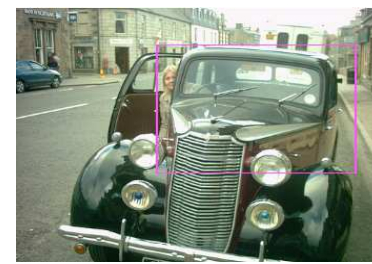
	HOG+SIFT	HOG+SIFT plusclass
All classes	0.264	0.290
cow	0.240	0.309
sheep	0.212	0.273
car	0.511	0.518
motorbike	0.417	0.427

Example of results: cars

Top true positives



First false positives



Missed

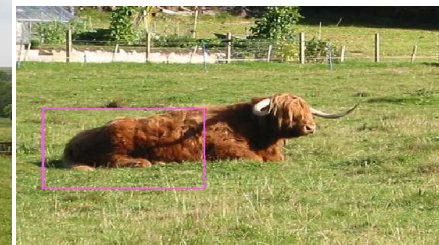
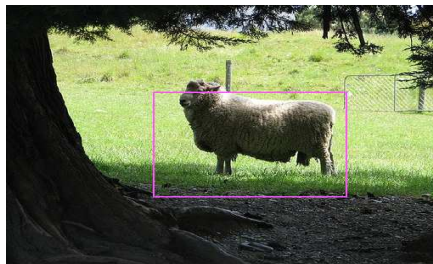


Example of results: cow

Top true positives



First false positives

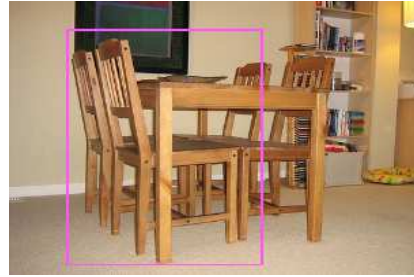


Missed



Example of results: chair

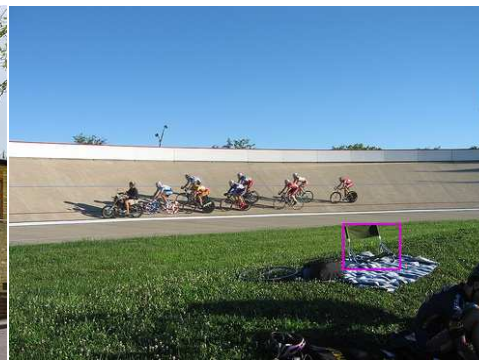
Top true positives



First false positives



Missed



Summary

- Two stage classification (hypotheses prediction, hypotheses verification)
- Image representation combination
- Reweighting with classification score
- Worse performance on some articulated classes (part models more suited)
- Outperform other competitors on most of the rigid classes

Thank you