



**HAL**  
open science

## Sur l'effet de peau en électromagnétisme

Victor Péron

► **To cite this version:**

Victor Péron. Sur l'effet de peau en électromagnétisme. Groupe de Travail Numérique, Jan 2010, Orsay, France. inria-00528536

**HAL Id: inria-00528536**

**<https://inria.hal.science/inria-00528536>**

Submitted on 18 Oct 2022

**HAL** is a multi-disciplinary open access archive for the deposit and dissemination of scientific research documents, whether they are published or not. The documents may come from teaching and research institutions in France or abroad, or from public or private research centers.

L'archive ouverte pluridisciplinaire **HAL**, est destinée au dépôt et à la diffusion de documents scientifiques de niveau recherche, publiés ou non, émanant des établissements d'enseignement et de recherche français ou étrangers, des laboratoires publics ou privés.

# Sur l'effet de peau en électromagnétisme

VICTOR PÉRON

Projet MC2

INRIA Bordeaux Sud-Ouest

Groupe de Travail Numérique, Orsay

27.01.2010

# Motivation

## Skin effect in a half-space

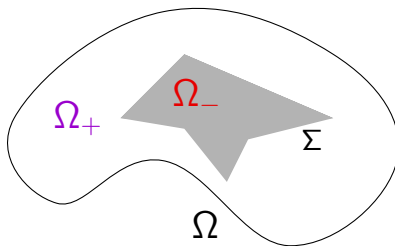
*Skin Effect* : in  $\{z > 0\}$  ,

$$\|\mathbf{E}_\sigma(z)\| = E_0 e^{-z/\ell(\sigma)}$$

*Skin Depth* :

$$\ell(\sigma) = \sqrt{2/\omega\mu_0\sigma}$$

# The Model Problem



- $\Omega_-$  Highly Conducting body  $\subset\subset \Omega$ : Conductivity  $\sigma_- \equiv \sigma \gg 1$
- $\Sigma = \partial\Omega_-$ : Interface
- $\Omega_+$  Insulating or Dielectric body: Conductivity  $\sigma_+ = 0$

Aim : Understand the Behavior of the Electromagnetic Field as  $\sigma \rightarrow \infty$

# Tools for the Asymptotic Analysis

- Tensor Calculus & Differential Geometry
- Asymptotic Expansions: *Scaling* Technique. *Boundary Layer* Expansion
- PDE Analysis : *Uniform Estimates*
- Numerical Simulations : the Asymptotic solution Procedure yields a *Fast and Efficient method*

## References



E.P. STEPHAN, R.C. McCAMY (83-84-85)

*Plane Interface and Eddy Current Problems*



H. HADDAR, P. JOLY, H.N. NGUYEN (08)

*Smooth Interface and Generalized Impedance Boundary Conditions*



V. PÉRON (09)

*PhD : Smooth and Polyhedral Interfaces*



M. DAUGE, E. FAOU, V. PÉRON (10)

*Asymptotic Behavior for High Conductivity of the Skin Depth*



G. CALOZ, M. DAUGE, V. PÉRON (09)

*Uniform Estimates for Transmission Problems with High Contrast in Heat Conduction and Electromagnetism*

# Outline

- 1 Uniform Estimates for Interface Problems
- 2 3D Multiscaled Asymptotic Expansion
- 3 Numerical Simulations

# Outline

## 1 Uniform Estimates for Interface Problems

## 2 3D Multiscaled Asymptotic Expansion

## 3 Numerical Simulations



# Maxwell Problem

## Issue and Framework

$$(\mathbf{P}_{\underline{\sigma}}) \quad \operatorname{curl} \mathbf{E} - i\omega\mu_0 \mathbf{H} = 0 \quad \text{and} \quad \operatorname{curl} \mathbf{H} + (i\omega\varepsilon_0 - \underline{\sigma}) \mathbf{E} = \mathbf{j} \quad \underline{\sigma} = (0, \sigma)$$

Issue: *Uniform*  $L^2$  estimates for solutions  $(\mathbf{E}, \mathbf{H})$  of  $(\mathbf{P}_{\underline{\sigma}})$  as  $\sigma \rightarrow \infty$  ?

# Maxwell Problem

## Issue and Framework

$$(\mathbf{P}_{\underline{\sigma}}) \quad \operatorname{curl} \mathbf{E} - i\omega\mu_0 \mathbf{H} = 0 \quad \text{and} \quad \operatorname{curl} \mathbf{H} + (i\omega\varepsilon_0 - \underline{\sigma}) \mathbf{E} = \mathbf{j} \quad \underline{\sigma} = (0, \sigma)$$

Issue: *Uniform*  $L^2$  estimates for solutions  $(\mathbf{E}, \mathbf{H})$  of  $(\mathbf{P}_{\underline{\sigma}})$  as  $\sigma \rightarrow \infty$  ?

### Hypothesis

$\Sigma$  is a bounded Lipschitz surface in  $\mathbb{R}^3$

### Hypothesis (SH)

The angular frequency  $\omega$  is not an eigenfrequency of the problem

$$\left\{ \begin{array}{ll} \operatorname{curl} \mathbf{E} - i\omega\mu_0 \mathbf{H} = 0 \quad \text{and} \quad \operatorname{curl} \mathbf{H} + i\omega\varepsilon_0 \mathbf{E} = 0 & \text{in } \Omega_+ \\ \mathbf{E} \times \mathbf{n} = 0 & \text{on } \Sigma \\ \text{B.C.} & \text{on } \partial\Omega \end{array} \right.$$

# Maxwell Problem

## Uniform $L^2(\Omega)$ Estimates

Boundary Conditions :  $\mathbf{E} \times \mathbf{n} = 0$  on  $\partial\Omega$

$\mathbf{j} \in \mathbf{H}(\text{div}, \Omega) = \{\mathbf{u} \in \mathbf{L}^2(\Omega) \mid \text{div } \mathbf{u} \in L^2(\Omega)\}$

### Theorem (CALOZ, DAUGE, P., 09)

Under Hypothesis (SH), there exist  $\sigma_0$  and  $C > 0$ , such that for all  $\sigma \geq \sigma_0$ ,  $(\mathbf{P}_{\underline{\sigma}})$  with B.C. and  $\mathbf{j} \in \mathbf{H}(\text{div}, \Omega)$  has a unique solution  $(\mathbf{E}, \mathbf{H})$  in  $L^2(\Omega)^2$ , and

$$\|\mathbf{E}\|_{0,\Omega} + \|\mathbf{H}\|_{0,\Omega} + \sqrt{\sigma} \|\mathbf{E}\|_{0,\Omega_-} \leq C \|\mathbf{j}\|_{\mathbf{H}(\text{div},\Omega)}$$

# Maxwell Problem

## Uniform $L^2(\Omega)$ Estimates

Boundary Conditions :  $\mathbf{E} \times \mathbf{n} = 0$  on  $\partial\Omega$

$\mathbf{j} \in \mathbf{H}(\text{div}, \Omega) = \{\mathbf{u} \in \mathbf{L}^2(\Omega) \mid \text{div } \mathbf{u} \in L^2(\Omega)\}$

### Theorem (CALOZ, DAUGE, P., 09)

Under Hypothesis (SH), there exist  $\sigma_0$  and  $C > 0$ , such that for all  $\sigma \geq \sigma_0$ ,  $(\mathbf{P}_\sigma)$  with B.C. and  $\mathbf{j} \in \mathbf{H}(\text{div}, \Omega)$  has a unique solution  $(\mathbf{E}, \mathbf{H})$  in  $L^2(\Omega)^2$ , and

$$\|\mathbf{E}\|_{0,\Omega} + \|\mathbf{H}\|_{0,\Omega} + \sqrt{\sigma} \|\mathbf{E}\|_{0,\Omega_-} \leq C \|\mathbf{j}\|_{\mathbf{H}(\text{div},\Omega)}$$

Application: Convergence of asymptotic expansion for high conductivity

# Maxwell Problem

## Proof of Uniform Estimates

### Lemma

Under Hypothesis (SH), there are  $\sigma_0$  and  $C_0 > 0$  such that if  $\sigma \geq \sigma_0$  any solution  $(\mathbf{E}, \mathbf{H}) \in L^2(\Omega)^2$  of  $(\mathbf{P}_{\underline{\sigma}})$  with B.C. and data  $\mathbf{j} \in \mathbf{H}(\operatorname{div}, \Omega)$  satisfies

$$\|\mathbf{E}\|_{0,\Omega} \leq C_0 \|\mathbf{j}\|_{\mathbf{H}(\operatorname{div},\Omega)}$$

# Maxwell Problem

## Proof of Uniform Estimates

### Lemma

Under Hypothesis (SH), there are  $\sigma_0$  and  $C_0 > 0$  such that if  $\sigma \geq \sigma_0$  any solution  $(\mathbf{E}, \mathbf{H}) \in L^2(\Omega)^2$  of  $(\mathbf{P}_{\underline{a}})$  with B.C. and data  $\mathbf{j} \in \mathbf{H}(\text{div}, \Omega)$  satisfies

$$\|\mathbf{E}\|_{0,\Omega} \leq C_0 \|\mathbf{j}\|_{\mathbf{H}(\text{div},\Omega)}$$

Proof by contradiction: keys

- 1  C. AMROUCHE, C. BERNARDI, M. DAUGE, V. GIRALT (98)

Vector Potential technique:  $\mathbf{E} =: \mathbf{w} + \nabla\varphi$  and  $\text{div } \mathbf{w} = 0$

$$\text{curl } \mathbf{H} + \underbrace{(i\omega\varepsilon_0 - \underline{\sigma})}_{=: \underline{a}} (\mathbf{w} + \nabla\varphi) = \mathbf{j} \longrightarrow \text{div } \underline{a} \nabla\varphi = \text{div } \mathbf{j} - \underbrace{\text{div } \underline{a} \mathbf{w}}_{= [\underline{a}]_{\Sigma} \mathbf{w} \cdot \mathbf{n}} \delta_{\Sigma}$$

- 2 Issue: Uniform piecewise regularity for

$$\text{div } \underline{a} \text{grad } \varphi = f + [\underline{a}]_{\Sigma} g \quad \text{as} \quad |a_-/a_+| \rightarrow \infty ?$$

# Uniform Estimates

## Scalar Problem

$$(\mathbf{P}_{\underline{a}}) : \quad \operatorname{div} \underline{a} \operatorname{grad} \varphi = f + [\underline{a}]_{\Sigma} g \quad \text{as} \quad |\rho| := |\underline{a}_- / \underline{a}_+| \rightarrow \infty$$

### Theorem (CALOZ, DAUGE, P., 09)

There exists  $\rho_0 > 0$  independent of  $\underline{a}_+ \neq 0$  s. t. for all  $\underline{a}_- \in \{z \in \mathbb{C} \mid |z| \geq \rho_0 |\underline{a}_+|\}$ , and for all  $(f, g) \in L^2(\Omega) \times L^2(\Sigma)$  s.t.  $\int_{\Sigma} g \, ds = 0$ ,  $(\mathbf{P}_{\underline{a}})$  has a unique solution  $\varphi \in H_0^1(\Omega)$ , piecewise  $H^{3/2}$  and

$$\|\varphi^+\|_{\frac{3}{2}, \Omega_+} + \|\varphi^-\|_{\frac{3}{2}, \Omega_-} \leq C_{\rho_0} (|\underline{a}_+|^{-1} \|f\|_{0, \Omega} + \|g\|_{0, \Sigma})$$

with  $C_{\rho_0} > 0$ , independent of  $\underline{a}_+$ ,  $\underline{a}_-$ ,  $f$ , and  $g$ .

# Uniform Estimates

## Scalar Problem

$$(\mathbf{P}_{\underline{a}}) : \quad \operatorname{div} \underline{a} \operatorname{grad} \varphi = f + [\underline{a}]_{\Sigma} g \quad \text{as} \quad |\rho| := |\underline{a}_- / \underline{a}_+| \rightarrow \infty$$

### Theorem (CALOZ, DAUGE, P., 09)

There exists  $\rho_0 > 0$  independent of  $\underline{a}_+ \neq 0$  s. t. for all  $\underline{a}_- \in \{z \in \mathbb{C} \mid |z| \geq \rho_0 |\underline{a}_+|\}$ , and for all  $(f, g) \in L^2(\Omega) \times L^2(\Sigma)$  s.t.  $\int_{\Sigma} g \, ds = 0$ ,  $(\mathbf{P}_{\underline{a}})$  has a unique solution  $\varphi \in H_0^1(\Omega)$ , piecewise  $H^{3/2}$  and

$$\|\varphi^+\|_{\frac{3}{2}, \Omega_+} + \|\varphi^-\|_{\frac{3}{2}, \Omega_-} \leq C_{\rho_0} (|\underline{a}_+|^{-1} \|f\|_{0, \Omega} + \|g\|_{0, \Sigma})$$

with  $C_{\rho_0} > 0$ , independent of  $\underline{a}_+$ ,  $\underline{a}_-$ ,  $f$ , and  $g$ .

Key of the Proof:

$$\varphi^+ = \sum_{n=0}^{\infty} \varphi_n^+ \rho^{-n} \quad \Omega_+ \quad \text{and} \quad \varphi^- = \sum_{n=0}^{\infty} \varphi_n^- \rho^{-n} \quad \Omega_-$$



## Remarks

- ① Similar estimate hold when  $a_+$  and  $a_-$  are switched.  
More precise estimate when  $a_+$  and  $a_-$  play symmetric roles
- ② The assumption that  $\Sigma$  is Lipschitz is necessary
- ③ For *polyhedral* Lipschitz interface  $\Sigma$

$$\|\varphi^+\|_{s,\Omega_+} + \|\varphi^-\|_{s,\Omega_-} \leq C_{\rho_0} (|a_+|^{-1} \|f\|_{s-2,\Omega} + \|g\|_{s-\frac{3}{2},\Sigma})$$

for  $s \leq s_\Sigma$  with some  $\frac{3}{2} < s_\Sigma \leq 2$

- ④ For *smooth* interface  $\Sigma$ , uniform piecewise  $H^s$  estimates for any  $s \geq 2$

# Outline

1 Uniform Estimates for Interface Problems

**2 3D Multiscaled Asymptotic Expansion**

3 Numerical Simulations

## References and Notations

Asymptotic Expansion as  $\sigma \rightarrow \infty$  of solutions of  $(\mathbf{P}_\sigma)$  when  $\Sigma$  is smooth :



STEPHAN, MCCAMY (83-84)

*Plane Interface*



HADDAR, JOLY, NGUYEN (08)



PÉRON (09)

# References and Notations

Asymptotic Expansion as  $\sigma \rightarrow \infty$  of solutions of  $(\mathbf{P}_\sigma)$  when  $\Sigma$  is smooth :



STEPHAN, MCCAMY (83-84)

*Plane Interface*



HADDAR, JOLY, NGUYEN (08)



PÉRON (09)

## Hypothesis

- 1  $\Sigma$  is a Smooth Surface
- 2  $\omega$  satisfies the Spectral Hypothesis (SH)
- 3  $\mathbf{j} \in \mathbf{H}(\text{div}, \Omega)$  and  $\mathbf{j} = 0$  in  $\Omega_-$
- 4 Perfectly Conducting Electric B.C.

# Asymptotic Expansion

$$\delta := \sqrt{\frac{\omega \varepsilon_0}{\sigma}} \longrightarrow 0 \quad \text{as } \sigma \rightarrow \infty$$

By Theorem there exists  $\delta_0$  s.t. for all  $\delta \leq \delta_0$ , there exists a unique solution  $(\mathbf{E}_{(\delta)}, \mathbf{H}_{(\delta)})$  to  $(\mathbf{P}_{\underline{\sigma}})$

$$\mathbf{E}_{(\delta)}^+(\mathbf{x}) \approx \sum_{j \geq 0} \delta^j \mathbf{E}_j^+(\mathbf{x}), \quad \mathbf{E}_{(\delta)}^-(\mathbf{x}) \approx \chi(y_3) \sum_{j \geq 0} \delta^j \mathbf{W}_j(y_\beta, \frac{y_3}{\delta})$$

$(y_\beta, y_3)$ : “normal coordinates” to  $\Sigma$  in a tubular region  $\mathcal{U}_-$  of  $\Sigma$  in  $\Omega_-$

$$\mathbf{E}_j^+ \in H(\text{curl}, \Omega_+) \quad , \quad \mathbf{W}_j \in H(\text{curl}, \Sigma \times \mathbb{R}_+) \quad \text{profiles}$$

# Asymptotic Expansion

$$\delta := \sqrt{\frac{\omega \varepsilon_0}{\sigma}} \longrightarrow 0 \quad \text{as} \quad \sigma \rightarrow \infty$$

By Theorem there exists  $\delta_0$  s.t. for all  $\delta \leq \delta_0$ , there exists a unique solution  $(\mathbf{E}_{(\delta)}, \mathbf{H}_{(\delta)})$  to  $(\mathbf{P}_{\underline{\sigma}})$

$$\mathbf{E}_{(\delta)}^+(\mathbf{x}) \approx \sum_{j \geq 0} \delta^j \mathbf{E}_j^+(\mathbf{x}), \quad \mathbf{E}_{(\delta)}^-(\mathbf{x}) \approx \chi(y_3) \sum_{j \geq 0} \delta^j \mathbf{W}_j(y_\beta, \frac{y_3}{\delta})$$

$(y_\beta, y_3)$ : “normal coordinates” to  $\Sigma$  in a tubular region  $\mathcal{U}_-$  of  $\Sigma$  in  $\Omega_-$

$$\mathbf{E}_j^+ \in \mathbf{H}(\text{curl}, \Omega_+) \quad , \quad \mathbf{W}_j \in \mathbf{H}(\text{curl}, \Sigma \times \mathbb{R}_+) \quad \text{profiles}$$

Similar Expansion for the Magnetic Field  $\mathbf{H}_{(\delta)}$

# Validation of the Asymptotic Expansion

## Remainders

Aim : proving Estimates for Remainders  $\mathbf{R}_{m;\delta}$

$$\mathbf{R}_{m;\delta} := \mathbf{E}(\delta) - \sum_{j=0}^m \delta^j \mathbf{E}_j \quad \text{in } \Omega$$

Evaluation of the right hand side when the Maxwell operator is applied to  $\mathbf{R}_{m;\delta}$

$$\left\{ \begin{array}{ll} \text{curl curl } \mathbf{R}_{m;\delta}^+ - \kappa^2 \alpha_+ \mathbf{R}_{m;\delta}^+ & = 0 \quad \text{in } \Omega_+ \\ \text{curl curl } \mathbf{R}_{m;\delta}^- - \kappa^2 \alpha_- \mathbf{R}_{m;\delta}^- & = \mathbf{j}_{m;\delta}^- \quad \text{in } \Omega_- \\ [\mathbf{R}_{m;\delta} \times \mathbf{n}]_{\Sigma} & = 0 \quad \text{on } \Sigma \\ [\text{curl } \mathbf{R}_{m;\delta} \times \mathbf{n}]_{\Sigma} & = \mathbf{g}_{m;\delta} \quad \text{on } \Sigma \\ \text{curl } \mathbf{R}_{m;\delta}^+ \times \mathbf{n} & = 0 \quad \text{on } \partial\Omega \end{array} \right.$$

with  $\alpha_+ = 1$  and  $\alpha_- = 1 + i \delta^{-2}$ , and  $\kappa = \omega \sqrt{\varepsilon_0 \mu_0}$

# Validation of the asymptotic expansion

## Estimates for Remainders

Estimates for the residues  $\mathbf{j}_{m;\delta}^-$  and  $\mathbf{g}_{m;\delta}$  :

$$\|\mathbf{j}_{m;\delta}^-\|_{2,\Omega_-} + \|\mathbf{g}_{m;\delta}\|_{\frac{1}{2},\Sigma} + \|\operatorname{curl}_{\Sigma} \mathbf{g}_{m;\delta}\|_{\frac{3}{2},\Sigma} \leq C_m \delta^{m-1}$$



# Validation of the asymptotic expansion

## Estimates for Remainders

Estimates for the residues  $\mathbf{j}_{m;\delta}^-$  and  $\mathbf{g}_{m;\delta}$  :

$$\|\mathbf{j}_{m;\delta}^-\|_{2,\Omega_-} + \|\mathbf{g}_{m;\delta}\|_{\frac{1}{2},\Sigma} + \|\operatorname{curl}_{\Sigma} \mathbf{g}_{m;\delta}\|_{\frac{3}{2},\Sigma} \leq C_m \delta^{m-1}$$

### Theorem (CALOZ, DAUGE, P., 09)

Under Hypothesis in the framework above, for all  $m \in \mathbb{N}$  and  $\delta \in (0, \delta_0]$ , the remainders  $\mathbf{R}_{m;\delta}$  satisfy the optimal estimates

$$\begin{aligned} \|\mathbf{R}_{m;\delta}^+\|_{0,\Omega_+} + \|\operatorname{curl} \mathbf{R}_{m;\delta}^+\|_{0,\Omega_+} \\ + \delta^{-\frac{1}{2}} \|\mathbf{R}_{m;\delta}^-\|_{0,\Omega_-} + \delta^{\frac{1}{2}} \|\operatorname{curl} \mathbf{R}_{m;\delta}^-\|_{0,\Omega_-} \leq C'_m \delta^{m+1} \end{aligned}$$

## Profiles of the Magnetic Field

$\mathbf{V}_j =: (\mathcal{V}_j^\alpha ; v_j)$  in coordinates  $(y_\beta, Y_3)$  with  $Y_3 = \frac{y_3}{\delta}$

## Profiles of the Magnetic Field

$\mathbf{V}_j =: (\mathcal{V}_j^\alpha ; v_j)$  in coordinates  $(y_\beta, Y_3)$  with  $Y_3 = \frac{y_3}{\delta}$

$$\mathbf{V}_0(y_\beta, Y_3) = \mathbf{h}_0(y_\beta) e^{-\lambda Y_3}$$

$$\mathcal{V}_1^\alpha(y_\beta, Y_3) = \left[ h_1^\alpha + Y_3 \left( \mathcal{H} h_0^\alpha + b_\sigma^\alpha h_0^\sigma \right) \right] (y_\beta) e^{-\lambda Y_3}$$

with

$\mathcal{H}$  mean curvature of  $\Sigma$

$$\mathbf{h}_0(y_\beta) = (\mathbf{n} \times \mathbf{H}_0^+) \times \mathbf{n}(y_\beta, 0) \quad \text{and} \quad h_j^\alpha(y_\beta) := (\mathbf{H}_j^+)^\alpha(y_\beta, 0)$$

## Profiles of the Magnetic Field

$\mathbf{v}_j =: (\mathcal{V}_j^\alpha ; v_j)$  in coordinates  $(y_\beta, Y_3)$  with  $Y_3 = \frac{y_3}{\delta}$

$$\mathbf{v}_0(y_\beta, Y_3) = \mathbf{h}_0(y_\beta) e^{-\lambda Y_3}$$

$$\mathcal{V}_1^\alpha(y_\beta, Y_3) = \left[ h_1^\alpha + Y_3 \left( \mathcal{H} h_0^\alpha + b_\sigma^\alpha h_0^\sigma \right) \right] (y_\beta) e^{-\lambda Y_3}$$

with

$\mathcal{H}$  mean curvature of  $\Sigma$

$$\mathbf{h}_0(y_\beta) = (\mathbf{n} \times \mathbf{H}_0^+) \times \mathbf{n}(y_\beta, 0) \quad \text{and} \quad h_j^\alpha(y_\beta) := (\mathbf{H}_j^+)^\alpha(y_\beta, 0)$$

Comparison with



HADDAR, JOLY, NGUYEN (08)

# Profiles of the Magnetic Field

$\mathbf{v}_j =: (\mathcal{V}_j^\alpha ; v_j)$  in coordinates  $(y_\beta, Y_3)$  with  $Y_3 = \frac{y_3}{\delta}$

$$\mathbf{v}_0(y_\beta, Y_3) = \mathbf{h}_0(y_\beta) e^{-\lambda Y_3}$$

$$\mathcal{V}_1^\alpha(y_\beta, Y_3) = \left[ h_1^\alpha + Y_3 \left( \mathcal{H} h_0^\alpha + b_\sigma^\alpha h_0^\sigma \right) \right] (y_\beta) e^{-\lambda Y_3}$$

with

$\mathcal{H}$  mean curvature of  $\Sigma$

$$\mathbf{h}_0(y_\beta) = (\mathbf{n} \times \mathbf{H}_0^+) \times \mathbf{n}(y_\beta, 0) \quad \text{and} \quad h_j^\alpha(y_\beta) := (\mathbf{H}_j^+)^\alpha(y_\beta, 0)$$

Comparison with



HADDAR, JOLY, NGUYEN (08)

Tool: a Normal Parameterization Technique

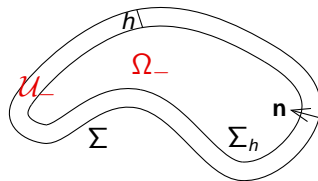


FAOU (02)

*Elasticity on a thin shell*

# Curl Operator and Levi-Civita Tensor

$$h := y_3$$



Curl Operator in Normal Parameterization:

$$(\nabla \times \mathbf{E})^\alpha = \epsilon^{3\beta\alpha} (\partial_3^h E_\beta - \partial_\beta E_3) \quad \text{on } \Sigma_h$$

$$(\nabla \times \mathbf{E})^3 = \epsilon^{3\alpha\beta} D_\alpha^h E_\beta \quad \text{on } \Sigma_h$$

Levi-Civita Tensor  $\epsilon$ :

$$\epsilon^{ijk} = \epsilon_0(i, j, k) / \sqrt{\det a_{\alpha\beta}(h)}$$

with  $a_{\alpha\beta}(h) = \text{metric on } \Sigma_h$  and  $\epsilon_0(i, j, k) \in \{0, 1, -1\}$

Covariant Derivative:

$$D_\alpha^h E_\beta = \partial_\alpha E_\beta - \Gamma_{\alpha\beta}^\gamma(h) E_\gamma$$

# Application 1

## A New Definition of the Skin Depth

3D model :  $\mathbf{V}_{(\delta)}(y_\alpha, y_3) := \mathbf{H}_{(\delta)}^-(\mathbf{x})$ ,  $y_\alpha \in \Sigma$ ,  $0 \leq y_3 < h_0$

### Definition

Let  $\Sigma$  be a smooth surface, and  $\mathbf{j}$  s.t.  $\mathbf{V}_{(\delta)}(y_\alpha, 0) \neq 0$ . The skin depth is the smallest length  $\mathcal{L}(\sigma, y_\alpha)$  defined on  $\Sigma$  s.t.

$$\|\mathbf{V}_{(\delta)}(y_\alpha, \mathcal{L}(\sigma, y_\alpha))\| = \|\mathbf{V}_{(\delta)}(y_\alpha, 0)\| e^{-1}$$

### Theorem (DAUGE, FAOU, P., 10)

Let  $\Sigma$  be a regular surface with mean curvature  $\mathcal{H}$ , and assume  $\mathbf{h}_0(y_\alpha) \neq 0$ .

$$\mathcal{L}(\sigma, y_\alpha) = \ell(\sigma) \left( 1 + \mathcal{H}(y_\alpha) \ell(\sigma) + \mathcal{O}(\sigma^{-1}) \right), \quad \sigma \rightarrow \infty$$

$$\|\mathbf{V}_{(\delta)}\|^2 = \left[ \|\mathbf{h}_0\|^2 + 2y_3 \mathcal{H} \|\mathbf{h}_0\|^2 + 2\delta \operatorname{Re}\langle \mathbf{h}_0, \mathbf{h}_1 \rangle + \mathcal{O}((\delta + y_3)^2) \right] e^{-2y_3/\ell(\sigma)}$$

# Outline

1 Uniform Estimates for Interface Problems

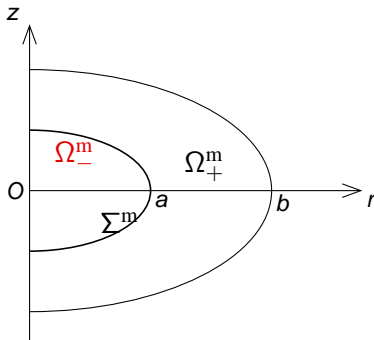
2 3D Multiscaled Asymptotic Expansion

**3 Numerical Simulations**



# Framework

- Magnetic Field  $\mathbf{H}_\sigma$
- Axisymmetric Problem:  $\Omega_-^m$  and  $\Omega_+^m$  Axisymmetric Domains
- $\text{curl } \mathbf{j}$  Axisymmetric & Orthoradial  $\longrightarrow \mathbf{H}_\sigma$  Axisymmetric & Orthoradial

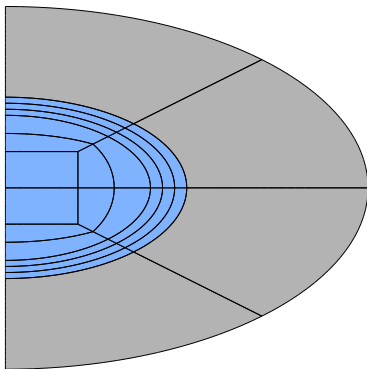


**Figure:** The meridian domain. Configuration A

- FEM: Finite Element Library Melina

## Convergence w.r.t. Interpolation degree $p$

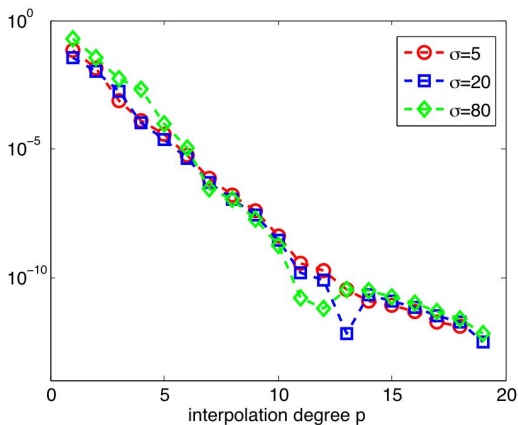
$H_\sigma^p$ : the computed solution with an interpolation degree  $p$  and a fixed mesh



We define

$$A_\sigma^p := \|H_\sigma^p\|_{L_1^2(\Omega_-^m)} \quad (\text{weight function} = r)$$

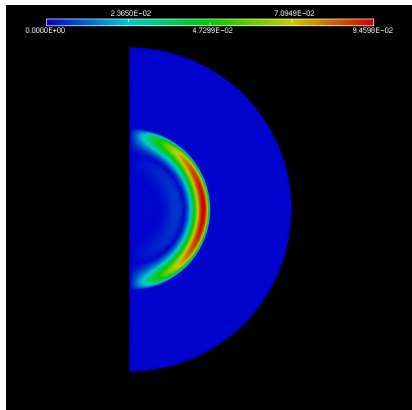
# Interpolation degree p



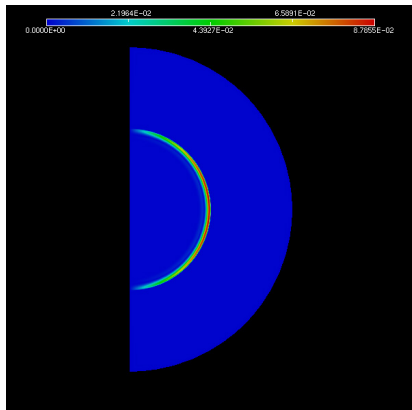
**Figure:**  $|A_\sigma^p - A_\sigma^{20}|$  when  $p = 1, \dots, 19$  in semilog scale

# Spherical Geometry

$|\operatorname{Im} H_\sigma|$ . Configuration A



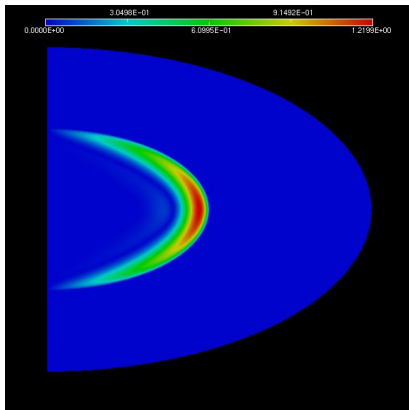
$|\operatorname{Im} H_\sigma|$  as  $\sigma = 5\text{S.m}^{-1}$



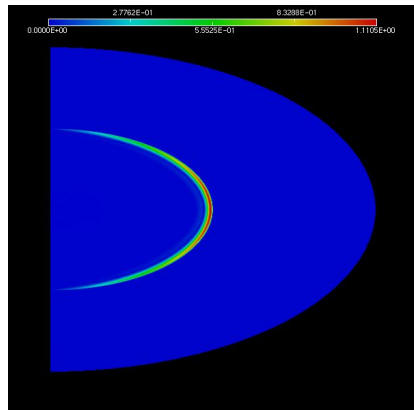
$|\operatorname{Im} H_\sigma|$  as  $\sigma = 80\text{S.m}^{-1}$

# Spheroidal Geometry

$|\operatorname{Im} H_\sigma|$ . Configuration A



$|\operatorname{Im} H_\sigma|$  as  $\sigma = 5 \text{ S.m}^{-1}$



$|\operatorname{Im} H_\sigma|$  as  $\sigma = 80 \text{ S.m}^{-1}$

# Influence of the Mean Curvature

## Configuration B

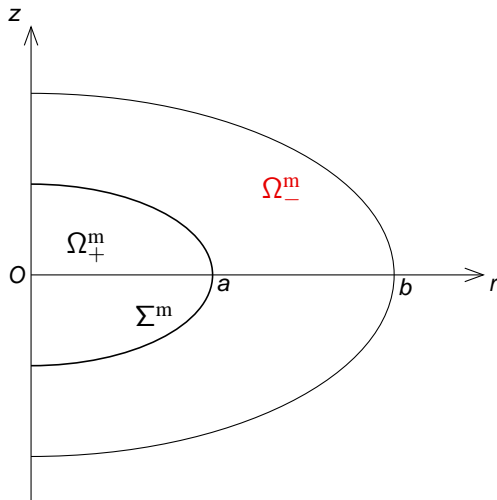
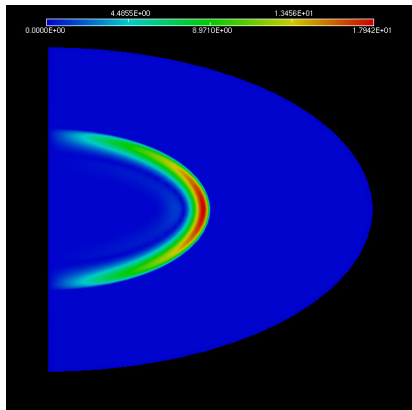


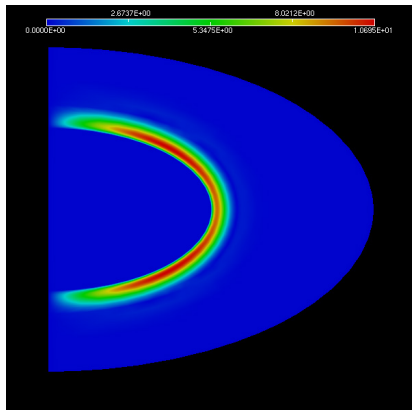
Figure: Configuration B.  $\mathcal{H} < 0$

# Influence of the Mean Curvature

$|\operatorname{Im} H_\sigma|$  when  $\sigma = 5S.m^{-1}$



Configuration A ( $\mathcal{H} > 0$ )



Configuration B ( $\mathcal{H} < 0$ )

# Numerical Post-Treatment

## Linear Regression. Configuration A

Extract  $|\mathbf{H}_\sigma(h)|$  along edges of the mesh in  $\Omega_m$  when  $z = 0$ :  $h = 2 - r$

$$\log_{10} |\mathbf{H}_\sigma(h)| = -s(\sigma)h + \alpha$$

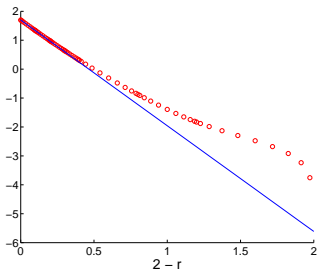


# Numerical Post-Treatment

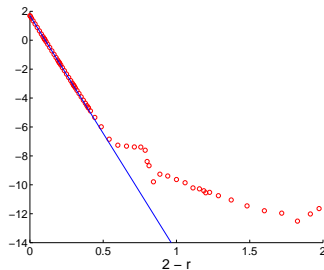
## Linear Regression. Configuration A

Extract  $|\mathbf{H}_\sigma(h)|$  along edges of the mesh in  $\Omega_{-}^m$  when  $z = 0$ :  $h = 2 - r$

$$\log_{10} |\mathbf{H}_\sigma(h)| = -s(\sigma)h + \alpha$$



○ :  $\log_{10} |\mathbf{H}_\sigma(h)|$  when  $\sigma = 5$   
 $n(\sigma) = 7$ ,  $s(5) = 3,65542$



○ :  $\log_{10} |\mathbf{H}_\sigma(h)|$  when  $\sigma = 80$   
 $n(\sigma) = 3$ ,  $s(80) = 16,279162$

# Post-Treatment

## Accuracy of Asymptotics

$$\log_{10} \|\mathbf{V}_{(\delta)}(y_\alpha, h)\| = - \underbrace{\frac{1}{\ln 10} \left( \frac{1}{\ell(\sigma)} - \mathcal{H}(y_\alpha) \right)}_{=: S(y_\alpha, \sigma)} h + \beta + \mathcal{O}(\delta) + \mathcal{O}((\delta+h)^2)$$

Relative Error between slopes:

$$\text{error}(\sigma) := \left| \frac{S(\sigma) - s(\sigma)}{S(\sigma)} \right|$$

# Post-Treatment

## Accuracy of Asymptotics

$$\log_{10} \|\mathbf{V}(\delta)(y_\alpha, h)\| = - \underbrace{\frac{1}{\ln 10} \left( \frac{1}{\ell(\sigma)} - \mathcal{H}(y_\alpha) \right)}_{=: S(y_\alpha, \sigma)} h + \beta + \mathcal{O}(\delta) + \mathcal{O}((\delta+h)^2)$$

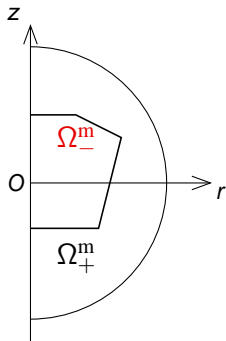
Relative Error between slopes:

$$\text{error}(\sigma) := \left| \frac{S(\sigma) - s(\sigma)}{S(\sigma)} \right|$$

$\sigma$	5	20
$\ell(\sigma)$ (cm)	10.3	5.15
$s(\sigma)$	3, 65542	7, 883903
$S(\sigma)$	3, 673319	7, 889506
$\text{error}(\sigma)$ (%)	0, 48	0, 07
$n(\sigma)$	7	5

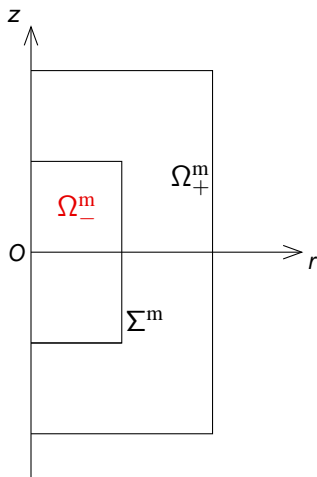
# Conclusion

- Efficiency Methods → Skin Effect
- Solution Structure & Optimal Estimates of Remainders
- A Singular Transmission Problem: with C. Poignard and M. Dauge

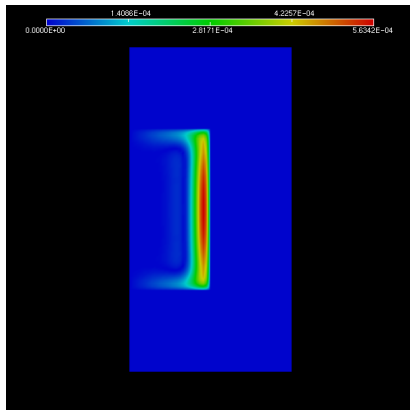
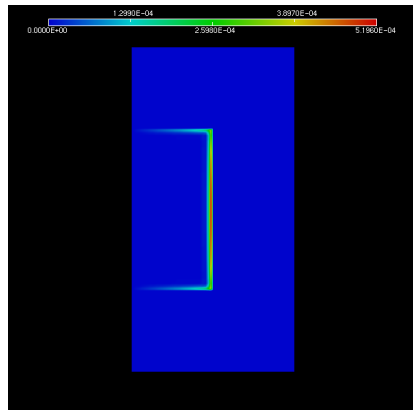


# Cylindrical Geometry

Meridian domain  $\Omega^m$

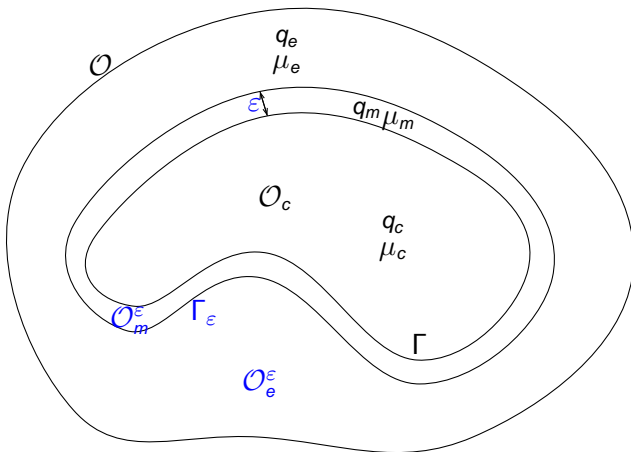


# Cylindrical Geometry

 $|\operatorname{Im} H_\sigma|$ 

 $|\operatorname{Im} H_\sigma|$  as  $\sigma = 5 \text{ S.m}^{-1}$ 

 $|\operatorname{Im} H_\sigma|$  as  $\sigma = 80 \text{ S.m}^{-1}$

## Application 2

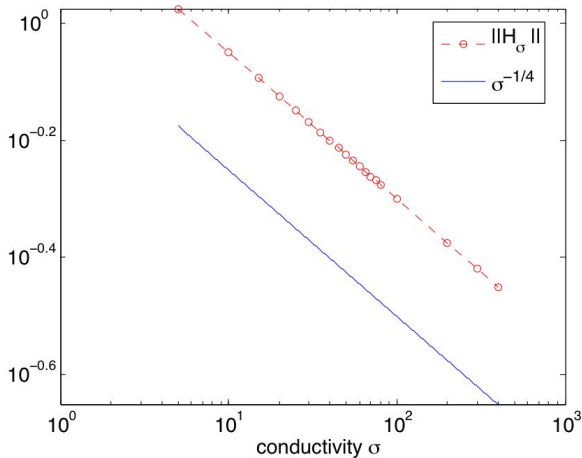
### Approximate Transmission Conditions [POIGNARD, P., 08]



Thanks for your attention !



# Weighted Norm of $H_\sigma^{16}$



Behavior consistent with the asymptotic expansion ( $\sqrt{\delta} \sim \sigma^{-1/4}$ )