



A million pixels, a million polygons: which is heavier?

François X. Sillion

► To cite this version:

François X. Sillion. A million pixels, a million polygons: which is heavier?. Eurographics '97, Sep 1997, Budapest, Hungary. Blackwell, 1997. inria-00510091

HAL Id: inria-00510091

<https://inria.hal.science/inria-00510091>

Submitted on 17 Aug 2010

HAL is a multi-disciplinary open access archive for the deposit and dissemination of scientific research documents, whether they are published or not. The documents may come from teaching and research institutions in France or abroad, or from public or private research centers.

L'archive ouverte pluridisciplinaire **HAL**, est destinée au dépôt et à la diffusion de documents scientifiques de niveau recherche, publiés ou non, émanant des établissements d'enseignement et de recherche français ou étrangers, des laboratoires publics ou privés.

A million pixels, a million polygons.
Which is heavier?

François X. Sillion

iMAGIS*

Grenoble, France

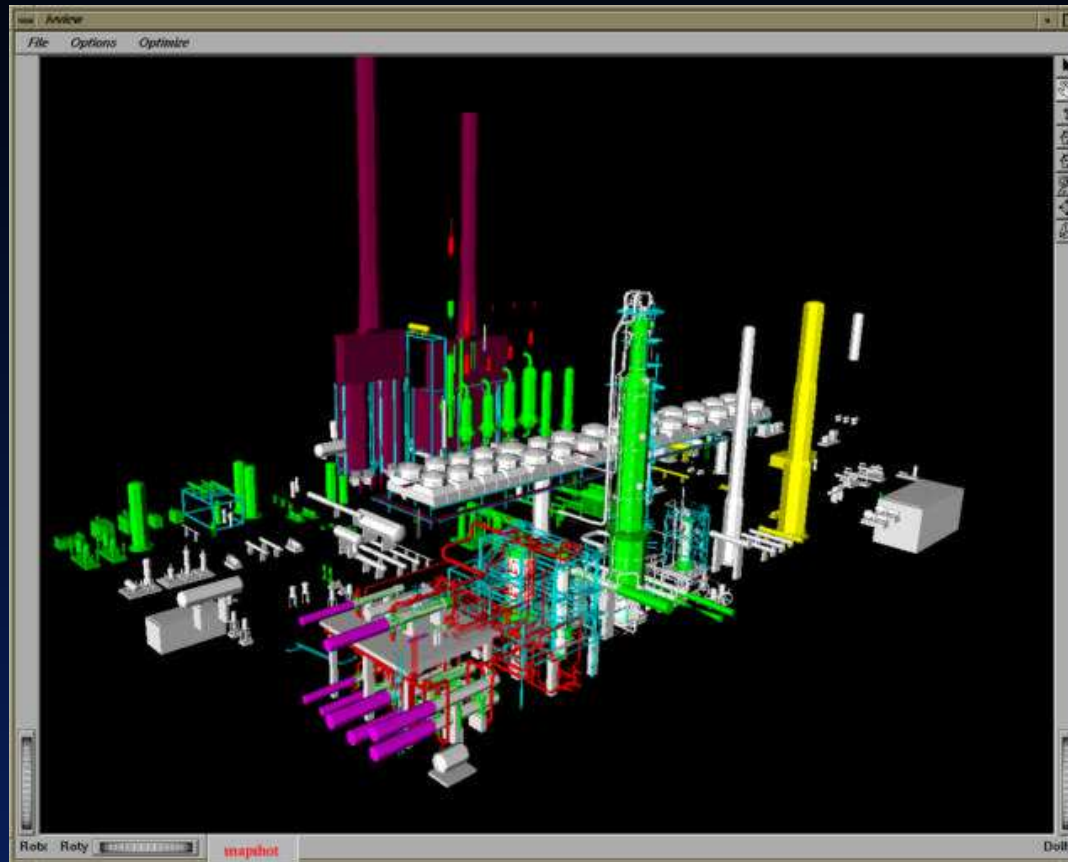
*A joint research project of CNRS, INRIA, INPG and UJF

iMAGIS

Why this question?

- ✓ Evolution of processing power and architectures
- ✓ New applications, demands and markets
 - Giant databases (digital mock up)
 - virtual reality, games...
- ✓ Image-based graphics:
 - current state and trends
 - potentialities

A million polygons



© François Sillion, iMAGIS 1997

Who needs a million polygons?

- ✓ Assemblies of CAD models
- ✓ Integrated design/manufacturing
- ✓ Digital mock-ups

A million pixels



© François Sillion, **iMAGIS 1997**

Rendering in Computer Graphics

- ✓ Models for 3D geometry, light reflection
- ✓ Global illumination simulation
- ✓ Real-time rendering

All of these requirements
present difficult challenges !

Subtle illumination effects



© François Sillion, **iMAGIS** 1997

Real-time rendering for dynamic scenes



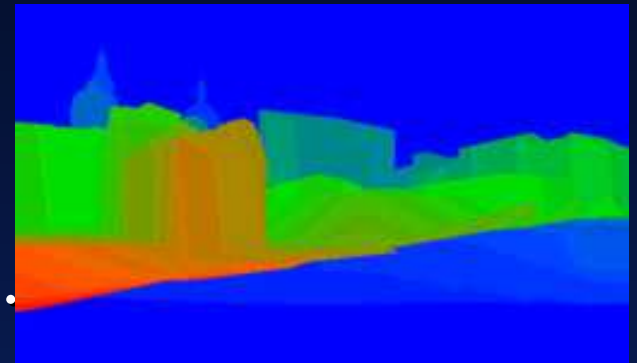
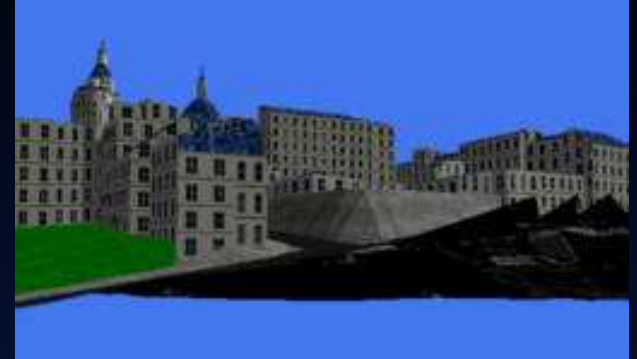
© François Sillion, **iMAGIS** 1997

Image-based rendering (IBR)

- ✓ Avoid expensive/difficult 3D model
- ✓ Start from a set of images
- ✓ Manipulate pixels to create new image
- ✓ With real images, elaborate lighting effects are “free”
- ✓ QuicktimeVR [Chen95], [Laveau], [McMillan95,97],...

What's an image?

- ✓ array of RGB (α) samples
- ✓ add depth sample
- ✓ add multiple depths, normals..
(Layered Depth Image, LDI)



Tour into the picture [Horry 97]



- ✓ Use a single image
- ✓ Manually define simple perspective
- ✓ Manually create layers with selected portions of the image

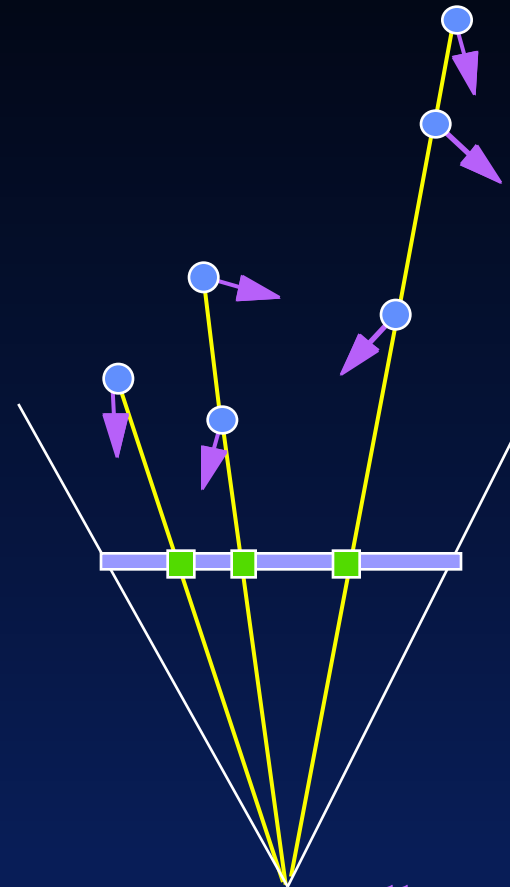
© François Sillion, **iMAGIS 1997**

See <http://www-syntim.inria.fr/~horry/images/s97slide.html>

Layered depth images [Gortler97]

See http://www.research.microsoft.com/research/graphics/cohen/SIG_97_IBR/index.htm

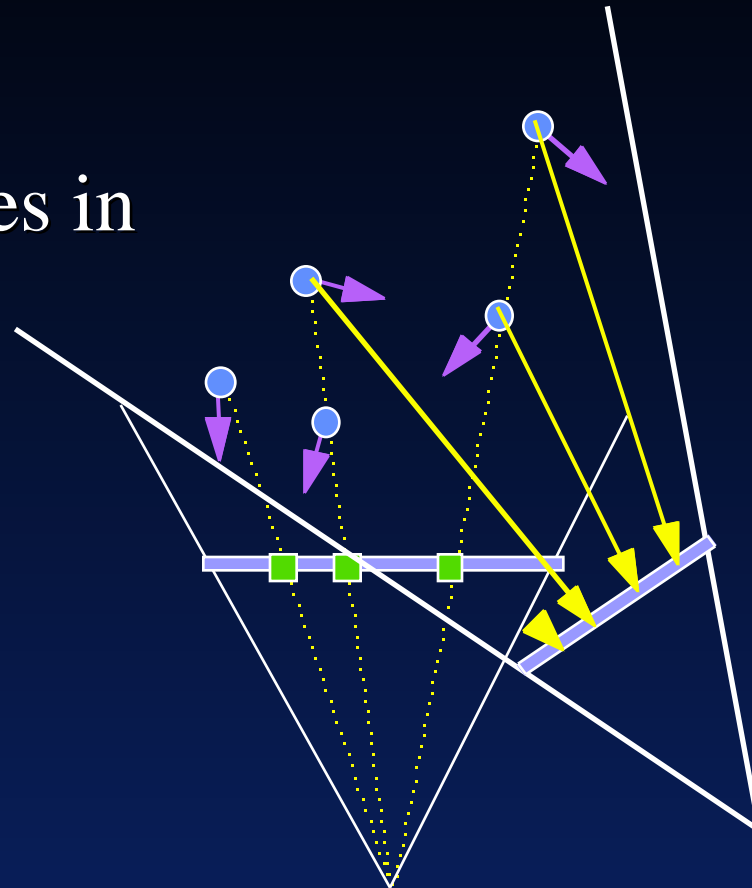
- ✓ Gather multiple depth samples for each pixel



© François Sillion, iMAGIS 1997

Layered depth images

- ✓ Reproject all samples in new image
 - no need for depth comparisons
 - splatting technique



Rendering from a million polygons?

- ✓ Transform 1-3M vertices 20 M flop
- ✓ Lighting 10 M flop
- ✓ Texturing 15 M flop
- ✓ Memory bandwidth 100 Mb
- ✓ Raster engine, z-buffering ?

Rendering from a million pixels?

- ✓ Transform 1M points (coherence) 6 M flop
- ✓ No lighting
- ✓ No z-buffering
- ✓ Memory bandwidth (coherent access) 8 Mb

Rendering performance considerations

- ✓ 3D rendering reaches the consumer market
 - thousands of lit,textured polygons / second.
 - specialized boards require careful design for efficient integration.
- ✓ Image processing subsystems
 - video (analog/digital),
 - texture (games),
 - multimedia extensions

Generating and obtaining IBR models

- ✓ From synthetic images
 - Ray tracing
 - Range images, LDIs, Lumigraphs
- ✓ From real images
 - use panoramic views, vision techniques
 - feature matching (difficult)
 - Lumigraphs (no depth)

Link with vision

- ✓ Image based modeling (IBM...)
- ✓ Use images + parameters
 - avoid WYSIAYG
 - object class information
 - interactive modeling (facade)

IBR = sampling + reconstruction

- ✓ Operate without geometry
- ✓ More complete representations (higher dimensionality)
- ✓ Simplified representations (adding simplified 3D model)

Light field - Lumigraph

4D Light Field

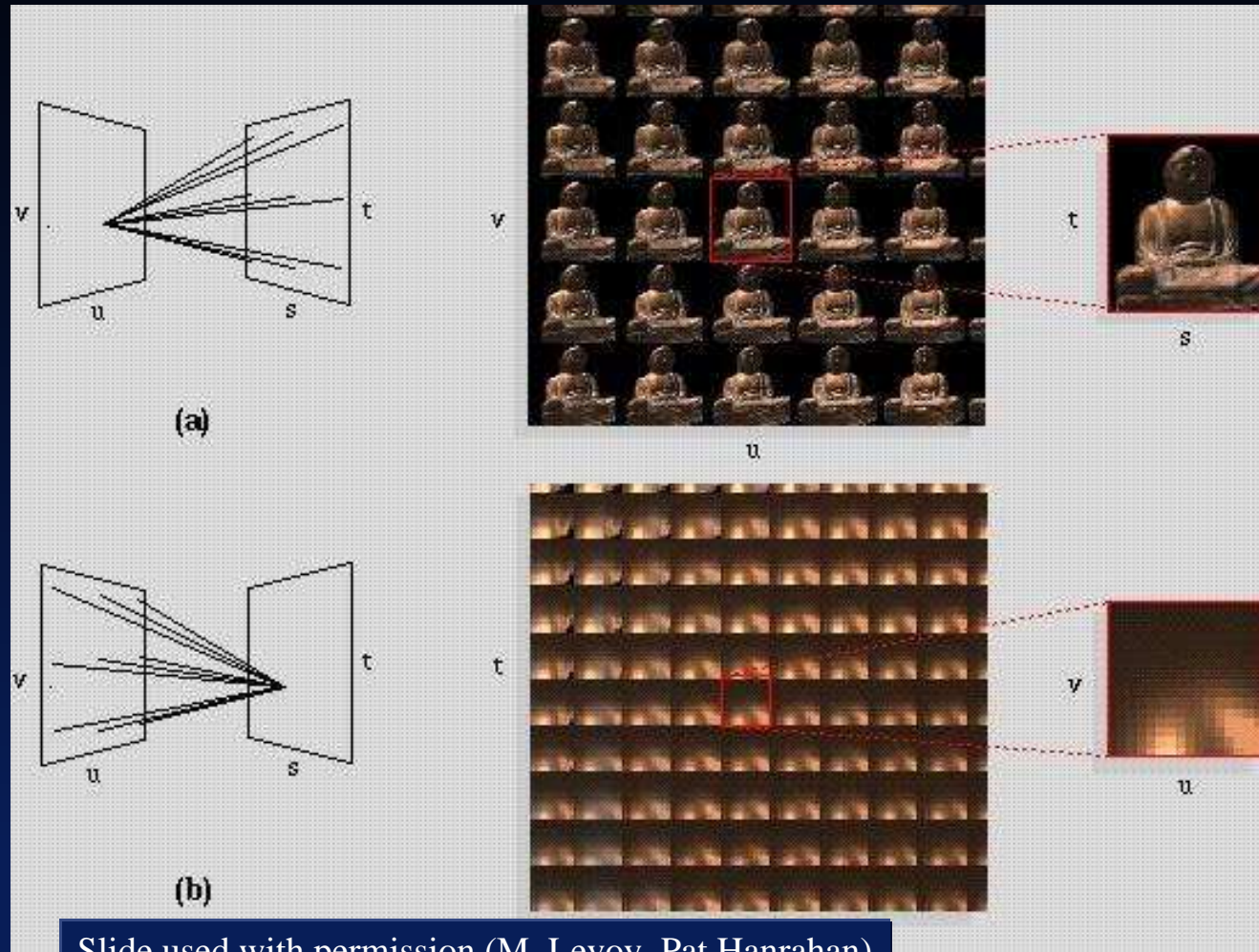


Levoy, Hanrahan 96
Gortler et al 96

Slide used with permission (M. Levoy, Pat Hanrahan)
See <http://www-graphics.stanford.edu/projects/lightfield>

© François Sillion, **iMAGIS 1997**

Light field - Lumigraph sampling



Slide used with permission (M. Levoy, Pat Hanrahan)

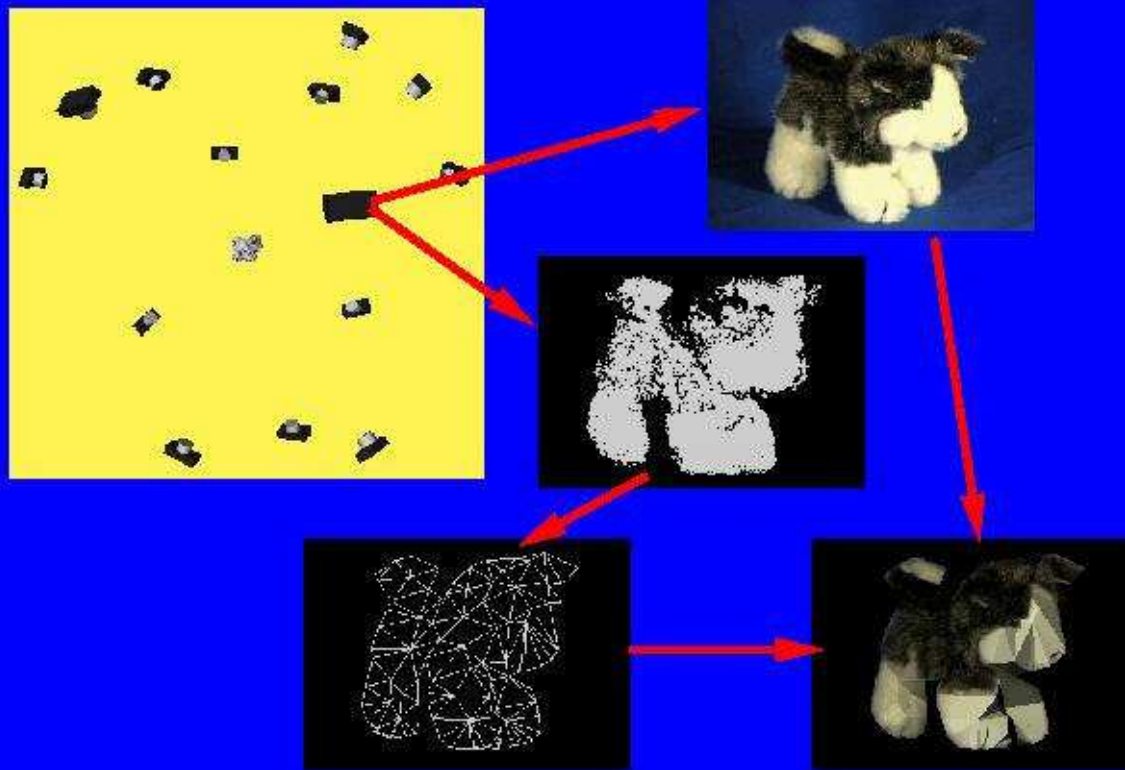
n, iMAGIS 1997

Impostors

- ✓ Create textured 3D model from images
 - *simplified* representation
 - rendered as 3D geometry
- ✓ Planar polygons [Maciel95, Schaufler96, Shade96]
- ✓ 3D meshes from range images
[Pulli 97, Darsa 97, Sillion 97]

Textured 3D mesh from a range image

View based models



Pulli 97

ion, **iMAGIS 1997**

Slide used with permission (K. Pulli et al.)

Blending required to combine views



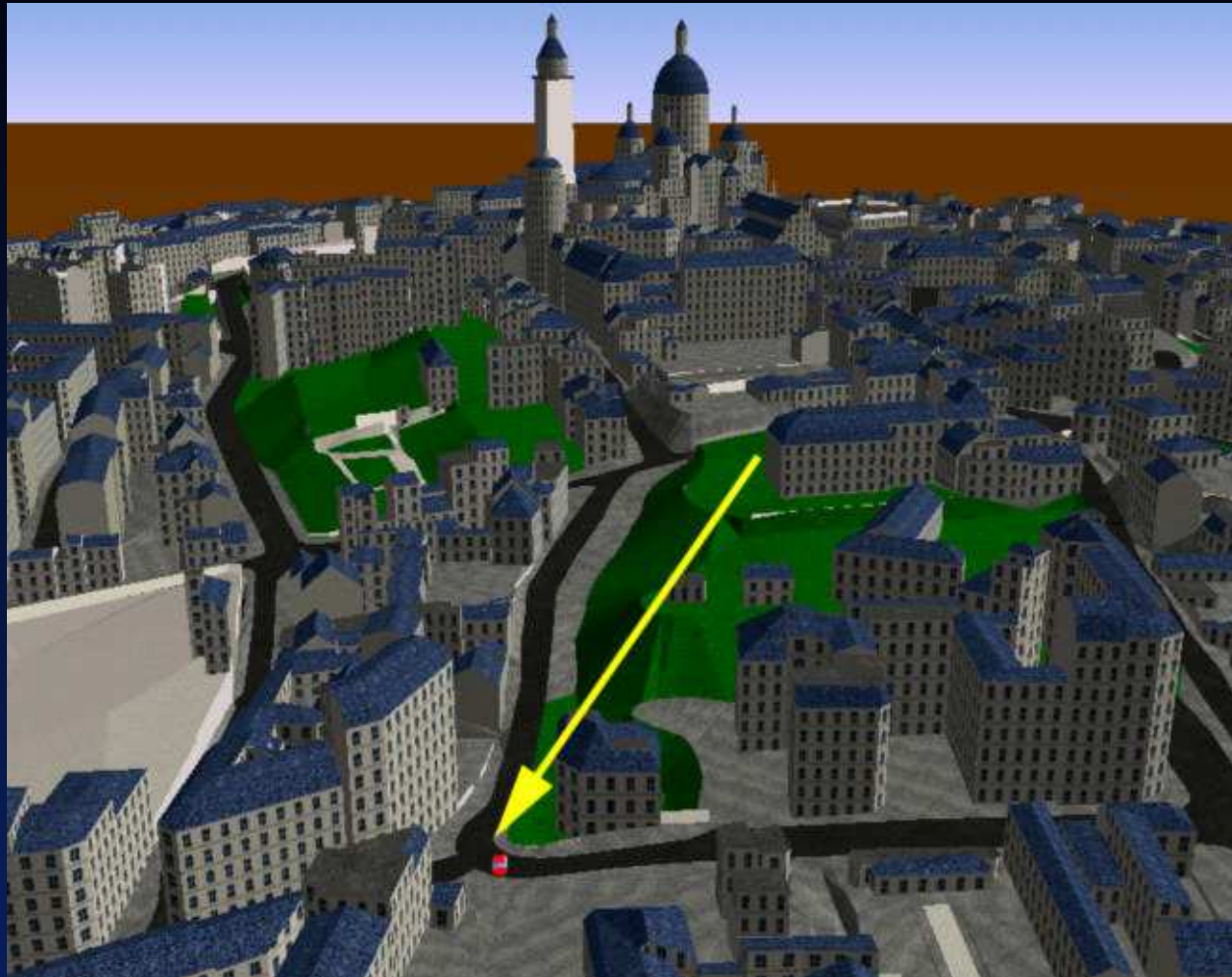
without blending
(z-buffer)

with blending
[Pulli 97]

François Sillion, **iMAGIS 1997**

Images used with permission (K. Pulli et al.) See <http://www.cs.washington.edu/homes/kapu>

Principles of our approach: example



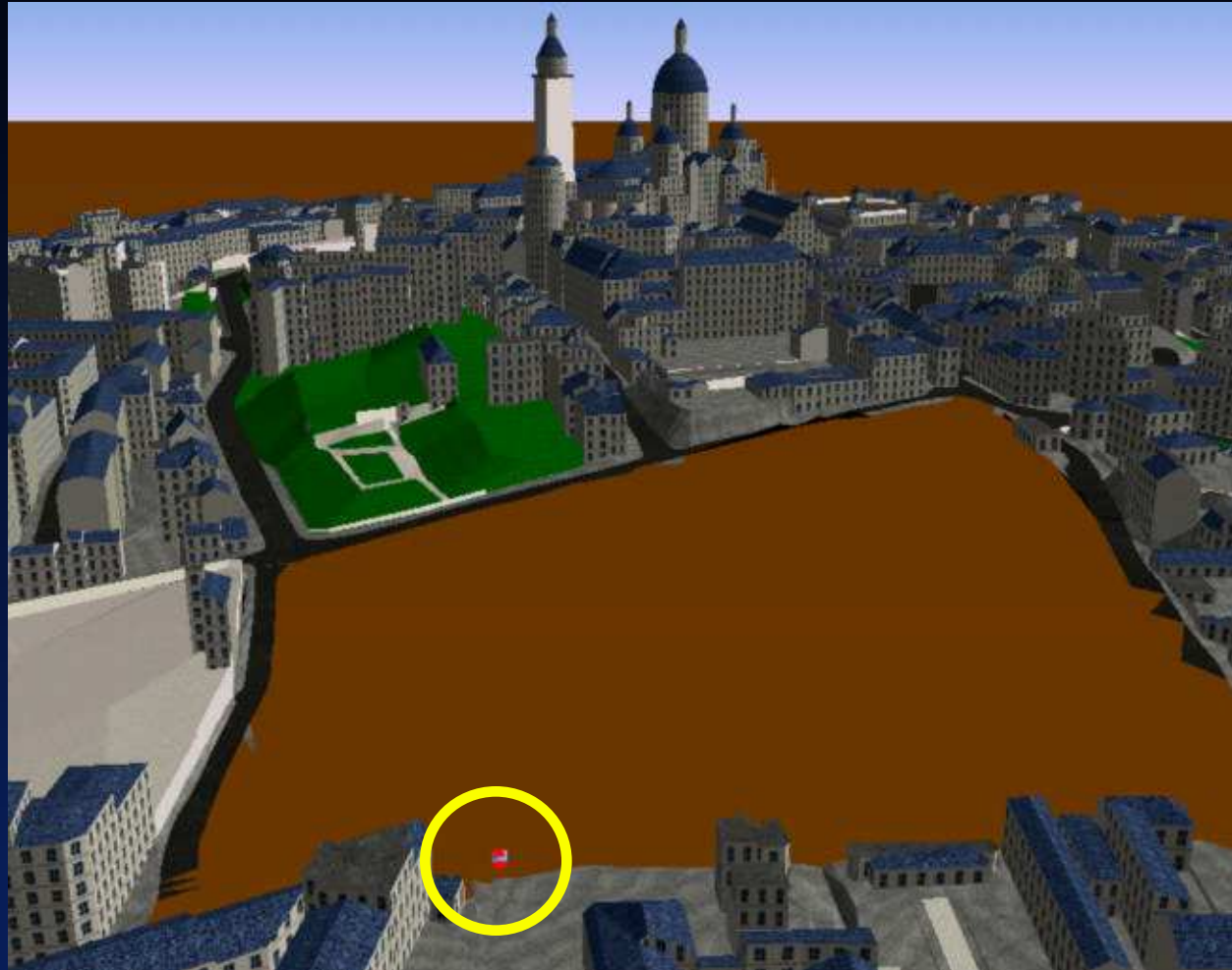
iMAGIS 1997

Local model (3D objects)



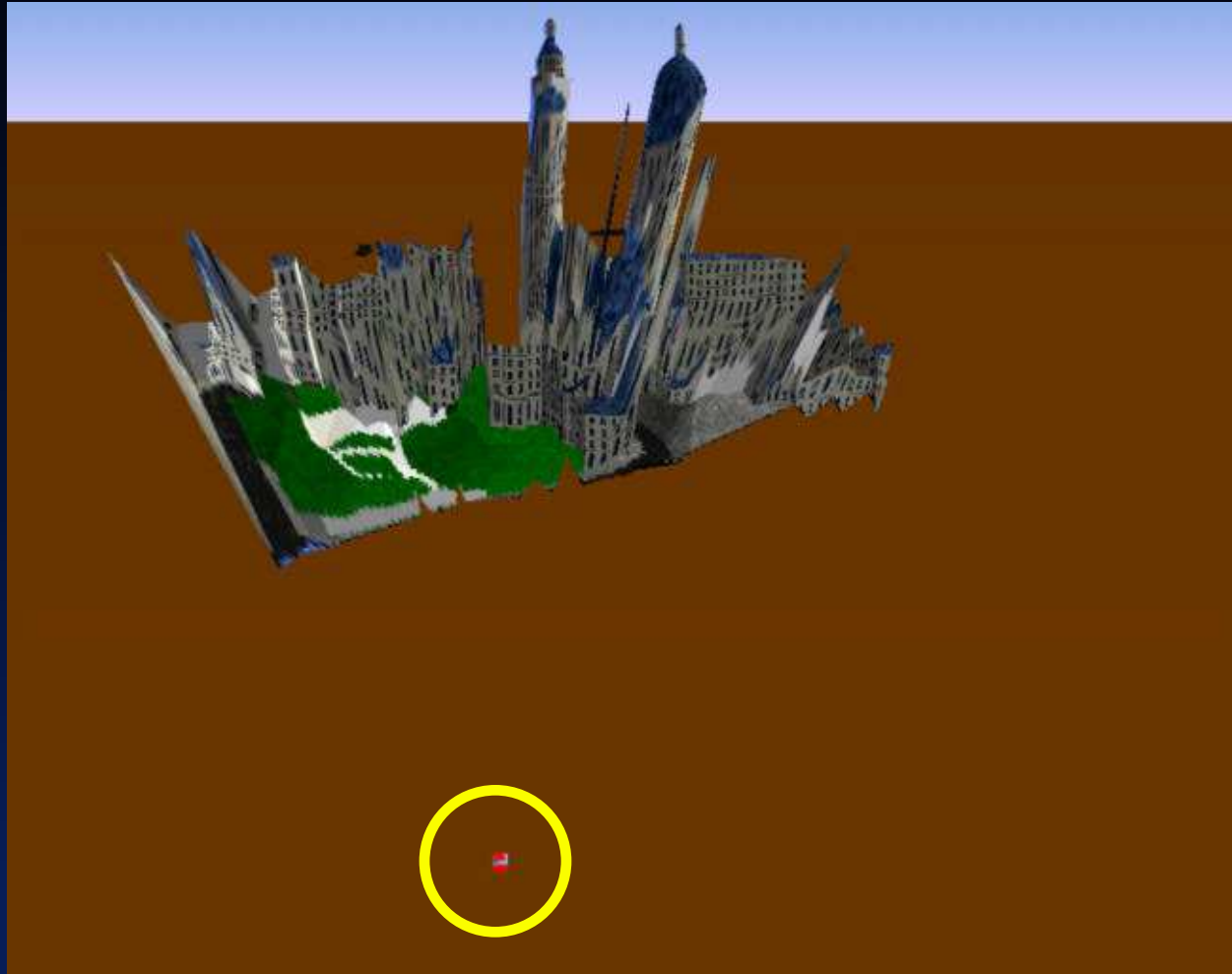
iMAGIS 1997

Distant model (3D objects)



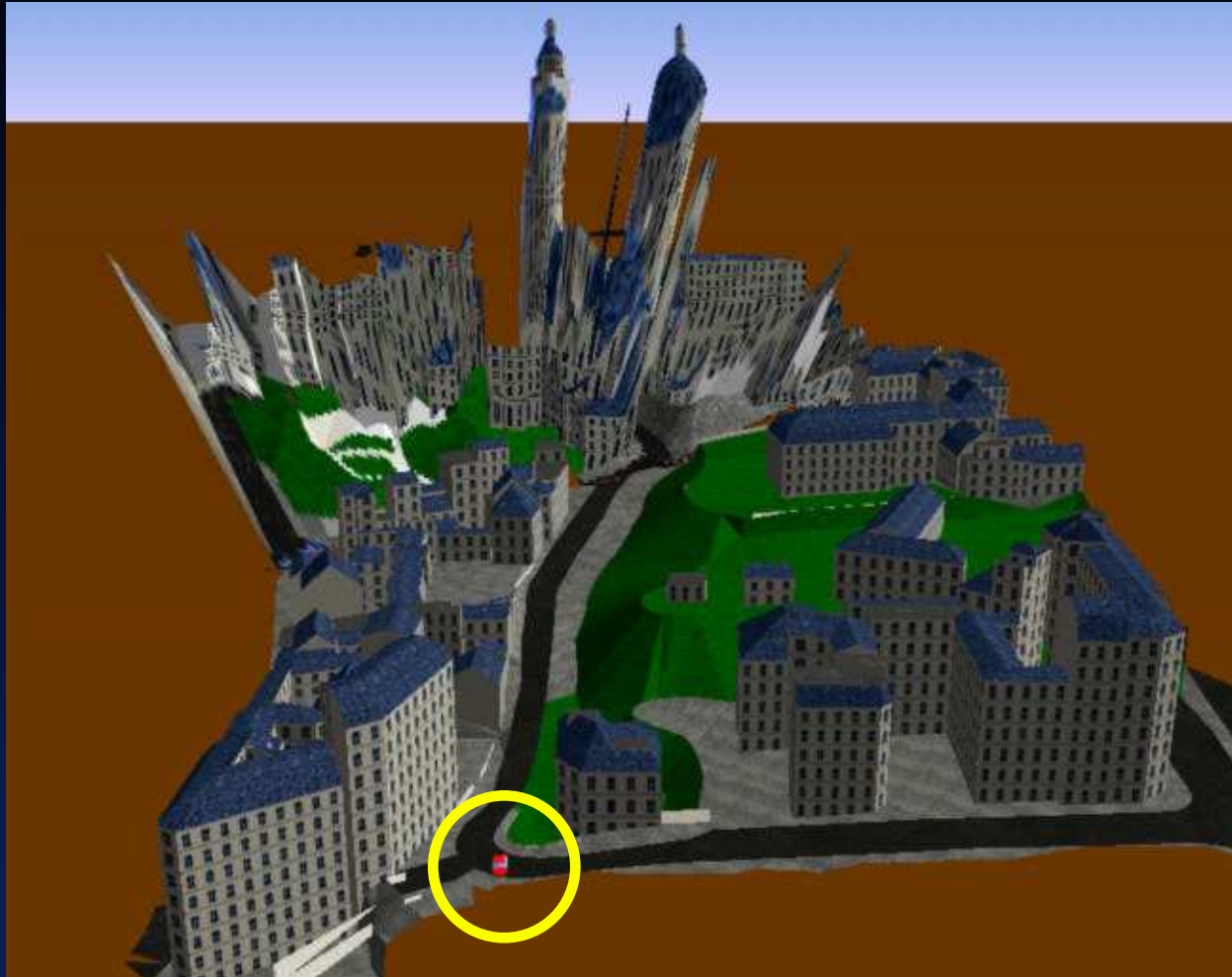
MAGIS 1997

Impostor (Textured 3D mesh)



MAGIS 1997

Combined model (local+impostor)



MAGIS 1997

Combined model (local+impostor)



iMAGIS 1997

Deforming impostors

- ✓ Talisman [Torborg 96]
 - Render sprites
 - Layered model
 - Affine transforms [Lengyel97]
- ✓ Impostor transition



Slide used with permission (J. Lengyel et al, Microsoft research.)

See <http://research.microsoft.com/~jedl>

© François Sillion, **iMAGIS 1997**

Applications for IBR

- ✓ Walkthrough / view synthesis
- ✓ Stereo synthesis
- ✓ Interpolation/extrapolation
 - Latency compensation
 - Frame rate equalization
 - Network transmission
 - Leverage expensive rendering

Polygons

Pixels

- ✓ Continuous
- ✓ Modeling
- ✓ Animation
- ✓ Level of detail

- ✓ Discrete
- ✓ Capture
- ✓ Video streams
- ✓ Filtering

Pixels

- ✓ Discrete, regular nature
 - easy to filter: adaptation to user perceptual limitations
- ✓ Work with real images
 - Easy to capture
 - Let nature do the modeling/lighting
 - Work from existing images (historical, legal, forensic applications...)
- ✓ WYSIAYG

Polygons

- ✓ Complete 3D model
 - solid modeling
 - global illumination
 - path planning, assembly checking, collision detection
- ✓ Common denominator for many modeling systems
- ✓ Can be simplified but it's hard to keep the model consistent

Extended notion of image-based models

- ✓ Use *both* images and 3D data
- ✓ Combine a simplified model with images
- ✓ model can be extracted from images or other information

IBR and availability of 3D models

- ✓ Complete 3D model
 - IBR as graphics subsystem
- ✓ No 3D model
 - QTVR, plenoptic rendering
 - The model *is* the image(s)
- ✓ Range data available
 - Scanned data is huge: need to simplify

Problems with current algorithms

- ✓ Holes in reconstructed images
- ✓ Image deformation (impostors)
- ✓ Volume of data
- ✓ Sampling/filtering artifacts

Can we expect hardware advances?

- ✓ view interpolator
- ✓ soft z-buffering and blending
- ✓ multiple or view-dependent textures
- ✓ decompression
- ✓ memory bandwidth

Limitations of IBR

- ✓ Specularities
- ✓ Lighting/geometry/reflectance changes are hard
- ✓ Computer Vision issues: model building
- ✓ Images may not be available!

Marketability

- ✓ QTVR, panoramic images
- ✓ Image-based modeling
- ✓ Image-based rendering architectures
- ✓ Image caching, impostors
- ✓ Network applications (QoS)
- ✓ Light field

...and now?

- ✓ Simulation of global illumination
- ✓ Visibility calculations
- ✓ View-dependent texture mapping
 - disparity/depth
 - specularity/shading
 - re-lighting
- ✓ Compression of depth values

Computer-augmented reality



input panorama

Drettakis 97



computed solution MAGIS 1997

Conclusions

- ✓ IBR offers useful advances
 - leverage cost of high-quality rendering
 - fast extension via specialized subsystem
- ✓ Vision issues limit applicability of “pure” IBR for real images
- ✓ Use combined 3D models and images
- ✓ Polygons are still useful!

Acknowledgements

- ✓ Yann Argotti, George Drettakis, Frédo Durand, Peter Kipfer, Céline Loscos, Stéphane Moreau, Cyril Soler
- ✓ Michael F. Cohen, Steven Gortler
- ✓ Marc Levoy, Pat Hanrahan, Kari Pulli, Jed Lengyel, Youichi Horry, Ken-ichi Anjyo, Kiyoshi Arai