



HAL
open science

Well-posedness, stability and invariance results for a class of multivalued Lur'e dynamical systems

Bernard Brogliato, Daniel Goeleven

► To cite this version:

Bernard Brogliato, Daniel Goeleven. Well-posedness, stability and invariance results for a class of multivalued Lur'e dynamical systems. [Research Report] RR-7158, INRIA. 2009. <inria-00442081>

HAL Id: inria-00442081

<https://inria.hal.science/inria-00442081v1>

Submitted on 12 Jan 2010

HAL is a multi-disciplinary open access archive for the deposit and dissemination of scientific research documents, whether they are published or not. The documents may come from teaching and research institutions in France or abroad, or from public or private research centers.

L'archive ouverte pluridisciplinaire HAL, est destinée au dépôt et à la diffusion de documents scientifiques de niveau recherche, publiés ou non, émanant des établissements d'enseignement et de recherche français ou étrangers, des laboratoires publics ou privés.



HAL Authorization

*Well-posedness, stability and invariance results for a
class of multivalued Lur'e dynamical systems*

Bernard Brogliato — Daniel Goeleven

N° 7158

December 2009

 *Rapport
de recherche*

Well-posedness, stability and invariance results for a class of multivalued Lur'e dynamical systems

Bernard Brogliato*, Daniel Goeleven †

Thème : Modélisation, optimisation et contrôle de systèmes dynamiques
Équipes-Projets Bipop

Rapport de recherche n° 7158 — December 2009 — 30 pages

Abstract: This paper analyzes the existence and uniqueness issues in a class of multivalued Lur'e systems, where the multivalued part is represented as the subdifferential of some convex, proper, lower semicontinuous function. Through suitable transformations the system is recast into the framework of dynamic variational inequalities and the well-posedness (existence and uniqueness of solutions) is proved. Stability and invariance results are also studied, together with the property of continuous dependence on the initial conditions. The problem is motivated by practical applications in electrical circuits containing electronic devices with nonsmooth multivalued voltage/current characteristics, and by state observer design for multivalued systems.

Key-words: Lur'e dynamical systems, passivity, invariance, Kato's theorem, maximal monotone operators, variational inequalities, differential inclusions, normal cones.

* INRIA Grenoble Rhône-Alpes, Bipop team-project, 655 avenue de l'Europe, 38334 Saint-Ismier, France; bernard.brogliato@inrialpes.fr

† IREMA, Université de la Réunion, 97400, Saint-Denis, France; daniel.goeleven@univ-reunion.fr

Existence et unicité de solutions, stabilité et invariance pour une classe de systèmes de Lur'e multivalués

Résumé : Cet article propose deux critères permettant d'assurer l'existence et l'unicité des solutions pour des systèmes de Lur'e multivalués, dans lesquels la partie multivaluée est représentée par la sous-différentielle d'une fonction convexe, propre, semi continue inférieurement. Par le biais de transformations adéquates le système est mis sous la forme d'une inéquation variationnelle dynamique. La stabilité et le principe d'invariance sont aussi étudiés, ainsi que la dépendance continue aux conditions initiales. Le problème est motivé par l'analyse de circuits comportant des composants non-réguliers multivalués, ainsi que par la synthèse d'observateurs d'état.

Mots-clés : système de Lur'e, passivité, invariance, stabilité, théorème de Kato, opérateurs maximaux monotones, inéquations variationnelles, inclusions différentielles, cônes normaux.

1 Introduction

Lur'e systems, which consist of a linear time-invariant system in negative feedback with a static nonlinearity satisfying a sector condition, have received a considerable interest in the applied mathematics and control literature, due to their broad interest (see [28] for a survey). More recently the case where the nonlinearity is a maximal monotone map has been studied [7]. The maximal monotonicity allows one to consider unbounded sectors $[0, +\infty]$ and nonsmooth set-valued nonlinearities. So-called linear complementarity systems can be recast into Lur'e systems, where the feedback nonlinearity takes the form of a set of complementarity conditions between two slack variables [24, 15, 31]. One of these slack variables may be interpreted as a Lagrange multiplier λ , while the other one usually takes the form $y = Cx + D\lambda$. More general piecewise linear nonlinearities have been considered in [27, 26]. As pointed out in [7] there exists a close relationship between some complementarity systems and differential inclusions with maximal monotone right-hand-sides, in particular inclusions into normal cones to convex sets (which are in turn equivalent to dynamical variational inequalities of the first kind). Particular cases have been investigated in [23, 10, 11]. All these works are however restricted to the case where $D = 0$, except [26] where affine complementarity systems are considered. In this paper, we extend the works in [23, 10] to the case where $D \neq 0$, *i.e.* there exists a feedthrough matrix in the linear part of the system. Moreover the nonlinearities which we consider are much more general than complementarity conditions between y and λ (*i.e.* $y \geq 0$, $\lambda \geq 0$, $y^T \lambda = 0$) and the considered systems may be written equivalently as dynamical variational inequalities of the second kind. Such an extension may be important in practice (for instance electrical circuits with ideal diodes and transistors usually yield systems with a nonzero feedthrough matrix D , possibly positive semidefinite and non symmetric). Observer synthesis for set-valued systems is also an important application [8, 14]. This work may also be seen as the continuation of previous efforts to study the relationships between various types of differential inclusions, complementarity systems, projected systems in finite dimensions [11, 19, 25, 21].

The paper is organized as follows: In section 2 the dynamical system is presented, and its well-posedness is studied in section 3. In section 4 the stability properties are studied, and an invariance result is presented in section 5. Conclusions end the paper in section 6.

Notations : Let $f : \mathbb{R}^n \rightarrow \mathbb{R} \cup \{+\infty\}$ be a proper convex and lower semicontinuous function, we denote by $\text{dom}(f) := \{x \in \mathbb{R}^n : f(x) < +\infty\}$ the domain of the function $f(\cdot)$. Recall that the Fenchel transform $f^*(\cdot)$ of $f(\cdot)$ is the proper, convex and lower semicontinuous function defined by

$$(\forall z \in \mathbb{R}^n) : f^*(z) = \sup_{x \in \text{dom}(f)} \{\langle x, z \rangle - f(x)\}.$$

The subdifferential $\partial f(x)$ of $f(\cdot)$ at $x \in \mathbb{R}^n$ is defined by

$$\partial f(x) = \{\omega \in \mathbb{R}^n : f(v) - f(x) \geq \langle \omega, v - x \rangle, \forall v \in \mathbb{R}^n\},$$

where $\langle \cdot, \cdot \rangle$ denotes the usual scalar product in \mathbb{R}^n , *i.e.* $\langle y, z \rangle = y^T z$ for any vectors y and z of \mathbb{R}^n . We denote by $\text{Dom}(\partial f) := \{x \in \mathbb{R}^n : \partial f(x) \neq \emptyset\}$ the

domain of the subdifferential operator $\partial f : \mathbb{R}^n \rightarrow \mathbb{R}^n$. Let x_0 be any element in the domain $\text{dom}(f)$ of $f(\cdot)$, the recession function $f_\infty(\cdot)$ of $f(\cdot)$ is defined by

$$(\forall x \in \mathbb{R}^n) : f_\infty(x) = \lim_{\lambda \rightarrow +\infty} \frac{1}{\lambda} f(x_0 + \lambda x).$$

The function $f_\infty : \mathbb{R}^n \rightarrow \mathbb{R} \cup \{+\infty\}$ is a proper convex and lower semicontinuous function which describes the asymptotic behavior of $f(\cdot)$. For a nonempty closed and convex set $K \subset \mathbb{R}^n$, the dual cone of K is the nonempty closed convex cone K^\star defined by

$$K^\star := \{w \in \mathbb{R}^n : \langle w, v \rangle \geq 0, \forall v \in K\}, \quad (1)$$

while the polar cone $K^\circ = -K^\star$. Let x_0 be any element in K , the recession cone of K is defined by

$$K_\infty = \bigcap_{\lambda > 0} \frac{1}{\lambda} (K - x_0).$$

The set K_∞ is a nonempty closed convex cone that is described in terms of the directions which recede from K . When K is a cone then $K_\infty = K$. The relative interior of a set K is denoted as $\text{rint}(K)$, and its closure as \bar{K} . Let $M \in \mathbb{R}^{m \times n}$ be a given matrix, we denote by $\ker(M)$ the kernel of M and by $\mathcal{R}(M)$ the range of M . $M \geq 0$ means that M is positive semidefinite, $M > 0$ means that it is positive definite.

2 The multivalued Lur'e system

Let $A \in \mathbb{R}^{n \times n}$, $B \in \mathbb{R}^{n \times p}$, $C \in \mathbb{R}^{p \times n}$, $D \in \mathbb{R}^{p \times p}$ be given matrices, $f \in C^0(\mathbb{R}_+; \mathbb{R})$ such that $f' \in L^1_{\text{loc}}(\mathbb{R}_+; \mathbb{R}^n)$ and $\varphi_i : \mathbb{R} \rightarrow \mathbb{R} \cup \{+\infty\}$ ($1 \leq i \leq p$) given proper convex and lower semicontinuous functions. Let $x_0 \in \mathbb{R}^n$ be some initial condition, we consider the problem : Find $x \in C^0(\mathbb{R}_+; \mathbb{R}^n)$ such that $x' \in L^\infty_{\text{loc}}(\mathbb{R}_+; \mathbb{R}^n)$ and x right-differentiable on \mathbb{R}_+ , $\lambda \in C^0(\mathbb{R}_+; \mathbb{R}^p)$ and $y \in C^0(\mathbb{R}_+; \mathbb{R}^p)$ satisfying the nonsmooth dynamical system $NSDS(A, B, C, D, f, \varphi_1, \dots, \varphi_p, x_0)$:

$$\left\{ \begin{array}{ll} x(0) & = x_0 \\ \text{a.e. } t \geq 0 : & \\ x'(t) & = Ax(t) + B\lambda(t) + f(t) \\ \text{for all } t \geq 0 : & \\ y(t) & = Cx(t) + D\lambda(t) \\ \lambda_1(t) & \in -\partial\varphi_1(y_1(t)) \\ \lambda_2(t) & \in -\partial\varphi_2(y_2(t)) \\ & \vdots \\ \lambda_p(t) & \in -\partial\varphi_p(y_p(t)) \end{array} \right. \quad (2)$$

The system is therefore in the canonical absolute stability form since it is the negative feedback interconnection of a linear invariant system (A, B, C, D) (with "input" λ , "output" y and external excitation $f(\cdot)$) with a static multivalued nonlinearity (with "input" y and "output" $-\lambda$). In [23, 10] it was considered that $D = 0$. As we shall see next the case $D \neq 0$ complicates the analysis. It is noteworthy that one may have $p > n$, which is crucial because λ is not a

control input and p may in applications be very large. Physical examples are given later in the paper. It is assumed in this paper that the “output” y does not depend explicitly on time. If this is the case the results of this paper do not apply because one has to resort to the perturbed Moreau’s sweeping process to derive well-posedness results, see [13].

Let us set $\lambda = (\lambda_1 \cdots \lambda_p)^T$, $\Phi(\cdot) = \varphi_1(\cdot) + \cdots + \varphi_p(\cdot)$, and $M \in \mathbb{R}^{p \times p}$ is an invertible matrix. One may consider a slightly more general version of the Lur’e system (2) as:

$$\begin{cases} x(0) = x_0 \\ x'(t) = Ax(t) + B\lambda(t) + f(t) \\ \lambda(t) \in -M \partial\Phi(y(t)) \end{cases} \quad (3)$$

Denoting $\bar{\lambda} = M^{-1}\lambda$, $\bar{B} = BM$, $\bar{D} = DM$, (3) is equivalently rewritten as:

$$\begin{cases} x(0) = x_0 \\ x'(t) = Ax(t) + \bar{B}\bar{\lambda}(t) + f(t) \\ \bar{\lambda}(t) \in -\partial\Phi(Cx(t) + \bar{D}\bar{\lambda}) \end{cases} \quad (4)$$

Therefore the transformed system (4) possesses the same structure as the system in (2). The Lur’e system (2) can be represented as in figure 1 (a).

Finally as will appear clearly later, all the existence and uniqueness of solutions results which are derived in this paper (section 3) also hold when the linear term Ax is replaced by a Lipschitz continuous mapping $A(x)$. For the sake of clarity of the presentation the linear case Ax is kept all through the paper, for the well-posedness and the stability analysis.

3 Well-posedness analysis

In this section the existence and uniqueness of solutions will be shown first by using a version of Kato’s theorem, second *via* maximal monotone operators. Examples coming from electrical circuits and state observer design are provided to illustrate the theoretical developments.

3.1 Well-posedness by Kato’s theorem

In the remainder of this section we shall apply some transformations to the Lur’e system so that its well-posedness can be analyzed.

3.1.1 System’s transformations

Let us set

$$(\forall z \in \mathbb{R}) : \varphi_i^{*,-}(z) := \varphi_i^*(-z). \quad (5)$$

Assumption 1. We assume the existence of $z_{0,i} \in \mathbb{R}$ at which $\varphi_i^{*,-}(\cdot)$ is continuous.

Assumption 1 is a simple qualitative condition that is required to ensure that (see [29]):

$$(\forall z \in \mathbb{R}) : \partial\varphi_i^{*,-}(z) = -\partial\varphi_i^*(-z).$$

Then

$$\lambda_i \in -\partial\varphi_i(y_i) \Leftrightarrow y_i \in \partial\varphi_i^*(-\lambda_i) = -[-\partial\varphi_i^*(-\lambda_i)] = -\partial\varphi_i^{*,-}(\lambda_i).$$

Let us now denote by p_I (and set $p_{II} = p - p_I$) the largest integer such that the matrix D can be written as follows:

$$D = \begin{pmatrix} 0_{p_I \times p_I} & 0_{p_{II} \times p_I} \\ 0_{p_I \times p_{II}} & D_{II} \end{pmatrix} \quad (6)$$

with $D_{II} \neq 0_{p_{II} \times p_{II}}$. In using this notation, we suppose by convention that $p_I = 0$ (resp. $p_{II} = 0$) means that the terms indexed by I (resp. II) are useless and not considered. So, if $p_I = 0$ (resp. $p_{II} = 0$) then $D \equiv D_{II}$ (resp. $D \equiv 0_{p \times p}$). For $z \in \mathbb{R}^p$, we set also $z = \begin{pmatrix} z_I & z_{II} \end{pmatrix}^T$ with $z_I \in \mathbb{R}^{p_I}$ and $z_{II} \in \mathbb{R}^{p_{II}}$,

$$B = \begin{pmatrix} B^I & B^{II} \end{pmatrix}, \quad C = \begin{pmatrix} C_I \\ C_{II} \end{pmatrix}$$

with $B^I \in \mathbb{R}^{n \times p_I}$, $B^{II} \in \mathbb{R}^{n \times p_{II}}$, $C_I \in \mathbb{R}^{p_I \times n}$ and $C_{II} \in \mathbb{R}^{p_{II} \times n}$. Finally, we set

$$(\forall y \in \mathbb{R}^{p_I}) : \Phi_I(y) := \varphi_1(y_1) + \varphi_2(y_2) + \dots + \varphi_{p_I}(y_{p_I}) \quad (7)$$

and

$$(\forall y \in \mathbb{R}^{p_{II}}) : \Phi_{II}(y) := \varphi_{p_I+1}(y_1) + \varphi_{p_I+2}(y_2) + \dots + \varphi_{p_{II}}(y_{p_{II}}). \quad (8)$$

We have:

$$(\forall z \in \mathbb{R}^{p_{II}}) : \Phi_{II}^*(z) = \varphi_{p_I+1}^*(z_1) + \varphi_{p_I+2}^*(z_2) + \dots + \varphi_{p_{II}}^*(z_{p_{II}}).$$

We set

$$(\forall z \in \mathbb{R}^{p_{II}}) : \Phi_{II}^{*,-}(z) := \Phi_{II}^*(-z). \quad (9)$$

We note also that Assumption 1 ensures that:

$$(\forall z \in \mathbb{R}^{p_{II}}) : \partial\Phi_{II}^{*,-}(z) = -\partial\Phi_{II}^*(-z).$$

We also set:

$$(\forall x \in \mathbb{R}^p) : \Phi(x) = \Phi_I(x) + \Phi_{II}(x) \quad (10)$$

and

$$(\forall x \in \mathbb{R}^p) : \Phi^{*,-}(x) = \Phi^*(-x). \quad (11)$$

Assumption 1 guarantees that

$$(\forall x \in \mathbb{R}^p) : \partial\Phi^{*,-}(x) = -\partial\Phi^*(-x).$$

It follows that the system

$$\begin{cases} \lambda_1(t) \in -\partial\varphi_1(y_1(t)) \\ \lambda_2(t) \in -\partial\varphi_2(y_2(t)) \\ \vdots \\ \lambda_p(t) \in -\partial\varphi_p(y_p(t)) \end{cases}$$

can be written equivalently as:

$$\begin{cases} \lambda_I(t) \in -\partial\Phi_I(y_I(t)) \\ \lambda_{II}(t) \in -\partial\Phi_{II}(y_{II}(t)) \end{cases}$$

or as:

$$\begin{cases} \lambda_I(t) \in -\partial\Phi_I(y_I(t)) \\ y_{II}(t) \in -\partial\Phi_{II}^{*-}(\lambda_{II}(t)) \end{cases}$$

Using these notations, we see that the system $NSDS(A, B, C, D, f, \varphi_1, \dots, \varphi_p, x_0)$ reduces to the system:

$$\begin{cases} x(0) = x_0 \\ \text{a.e. } t \geq 0 : \\ x'(t) = Ax(t) + B^I \lambda_I(t) + B^{II} \lambda_{II}(t) + f(t) \\ \text{for all } t \geq 0 : \\ y_I(t) = C_I x(t) \\ \lambda_I(t) \in -\partial\Phi_I(y_I(t)) \\ y_{II}(t) = C_{II} x(t) + D_{II} \lambda_{II}(t) \\ y_{II}(t) \in -\partial\Phi_{II}^{*-}(\lambda_{II}(t)) \end{cases}$$

The feedback nonlinearity is therefore splitted into two main parts: one part indexed by I is multivalued, the other part indexed by II will be shown under certain conditions to be single-valued.

Remark 1 *The case $p_I = n$ (i.e. $D = 0_{n \times n}$) has been the object of specific papers, see [23, 10, 4]. The complementarity problem (i.e. $\varphi_i(\cdot) = \Psi_{\mathbb{R}_+}(\cdot) \forall i \in \{1, \dots, n\}$), has also been the object of various papers [24, 15, 17, 16].*

Assumption 2. (If $p_I \geq 1$) There exists a symmetric and invertible matrix $W \in \mathbb{R}^{n \times n}$ such that:

$$W^2 B^I = C_I^T. \quad (12)$$

We set:

$$V = \begin{cases} W & \text{if } p_I \geq 1 \\ I & \text{if } p_I = 0 \end{cases} \quad (13)$$

and

$$(\forall w \in \mathbb{R}^{p_I}) : \Xi_I(w) = \begin{cases} \Phi_I(C_I V^{-1} w) & \text{if } p_I \geq 1 \\ 0 & \text{if } p_I = 0 \end{cases} \quad (14)$$

Notice that by [30, Exercise 1.40, Proposition 1.39] the function $\Xi_I(\cdot) = \Phi \circ C_I V^{-1}(\cdot)$ is lower semicontinuous, proper, convex.

Assumption 3. (If $p_I \geq 1$) There exists a point w_0 in \mathbb{R}^{p_I} at which $\Xi_I(\cdot)$ is continuous.

Assumptions 2 and 3 ensure in case $p_I \geq 1$ that

$$(\forall w \in \mathbb{R}^{p_I}) : \partial \Xi_I(w) = V^{-T} C_I^T \partial \Phi_I(C_I V^{-1} w) = V^{-1} C_I^T \partial \Phi_I(C_I V^{-1} w).$$

The multivalued mapping $\Xi_I(\cdot)$ is maximal monotone, being the subdifferential of a convex, proper, lower semicontinuous function. Let us now set:

$$(\forall x \in \mathbb{R}^n) : \Lambda_{II}(x) := \begin{cases} VB^{II}(D_{II} + \partial \Phi_{II}^{*, -})^{-1}(-C_{II} V^{-1} x) & \text{if } p_{II} \geq 1 \\ 0 & \text{if } p_{II} = 0 \end{cases}$$

We suppose also the following:

Assumption 4. (If $p_{II} \geq 1$) The operator $\Lambda_{II} : \mathbb{R}^n \rightarrow \mathbb{R}^n : x \mapsto \Lambda_{II}(x)$ is well-defined, single-valued and Lipschitz continuous.

Recalling that

$$D_{II} z - q \in -\partial \Phi_{II}^{*, -}(z) \Leftrightarrow q \in (D_{II} + \partial \Phi_{II}^{*, -})(z) \Leftrightarrow z \in (D_{II} + \partial \Phi_{II}^{*, -})^{-1}(q),$$

we note that Assumption 4 (in case $p_{II} \geq 1$) requires that for all $q \in \mathbb{R}^{p_{II}}$, there exists at least one $z(q) \in \mathbb{R}^{p_{II}}$ such that

$$\langle D_{II} z - q, v - z \rangle + \Phi_{II}^{*, -}(v) - \Phi_{II}^{*, -}(z) \geq 0, \forall v \in \mathbb{R}^{p_{II}}, \quad (15)$$

and there exists a constant $K > 0$ such that for all $x_1, x_2 \in \mathbb{R}^n$ and $z_1 \in (D_{II} + \partial \Phi_{II}^{*, -})^{-1}(-C_{II} V^{-1} x_1)$, $z_2 \in (D_{II} + \partial \Phi_{II}^{*, -})^{-1}(-C_{II} V^{-1} x_2)$:

$$\|VB^{II} z_1 - VB^{II} z_2\| \leq K \|x_1 - x_2\| \quad (16)$$

The solvability of the variational inequality in (15) ensures that

$$(\forall x \in \mathbb{R}^n) : VB^{II}(D_{II} + \partial \Phi_{II}^{*, -})^{-1}(-C_{II} V^{-1} x) \neq \emptyset$$

while the condition in (16) guarantees that if $x \in \mathbb{R}^n$ and $z_1, z_2 \in (D_{II} + \partial \Phi_{II}^{*, -})^{-1}(-C_{II} V^{-1} x)$ then $\|z_1 - z_2\| \leq 0$ and thus $z_1 = z_2$. It results that the operator $\Lambda_{II}(\cdot)$ is single-valued. The Lipschitz continuity of $\Lambda_{II}(\cdot)$ is then also a direct consequence of (16).

Conditions on the matrix D_{II} and on the function $\Phi_{II}^{*, -}(\cdot)$ ensuring that Assumption 4 holds will be discussed in the following section.

The problem $NSDS(A, B, C, D, f, \varphi_1, \dots, \varphi_p, x_0)$ can be reduced, by setting $X(t) = Vx(t)$ ($\forall t \geq 0$), to the following dynamical variational inequality problem: Find $X \in C^0(\mathbb{R}_+; \mathbb{R}^n)$ such that $X' \in L_{loc}^\infty(\mathbb{R}_+; \mathbb{R}^n)$ and X right-differentiable on \mathbb{R}_+ such that $X(0) = Vx_0$ and satisfying for a.e $t \geq 0$ the variational inequality:

$$\langle X'(t) - VAV^{-1}X(t) - \Lambda_{II}(X(t)) - Vf(t), v - X(t) \rangle$$

$$+\Xi_I(v) - \Xi_I(X(t)) \geq 0, \forall v \in \mathbb{R}^n. \quad (17)$$

which we may name a dynamical variational inequality of the second kind. Indeed, let us here write the details in case $p_I \geq 1$ and $p_{II} \geq 1$. It is clear that

$$x(0) = x_0 \Leftrightarrow Vx(0) = Vx_0 \Leftrightarrow X(0) = Vx_0$$

and

$$\begin{cases} x'(t) &= Ax(t) + B^I \lambda_I(t) + B^{II} \lambda_{II}(t) + f(t) \\ y_I(t) &= C_I x(t) \\ \lambda_I(t) &\in -\partial\Phi_I(y_I(t)) \\ y_{II}(t) &= C_{II} x(t) + D_{II} \lambda_{II}(t) \\ y_{II}(t) &\in -\partial\Phi_{II}^{*,-}(\lambda_{II}(t)) \end{cases}$$

\Downarrow

$$x'(t) - B^{II}(D_{II} + \partial\Phi_{II}^{*,-})^{-1}(-C_{II}x(t)) - Ax(t) - f(t) \in -B^I \partial\Phi_I(C_I x(t))$$

\Downarrow

$$\begin{aligned} Vx'(t) - VB^{II}(D_{II} + \partial\Phi_{II}^{*,-})^{-1}(-C_{II}V^{-1}Vx(t)) \\ -VAV^{-1}Vx(t) - Vf(t) \in -V^{-1}V^2B^I \partial\Phi_I(C_IV^{-1}Vx(t)) \end{aligned}$$

\Downarrow

$$\begin{aligned} X'(t) - VB^{II}(D_{II} + \partial\Phi_{II}^{*,-})^{-1}(-C_{II}V^{-1}X(t)) \\ -VAV^{-1}X(t) - Vf(t) \in -V^{-1}C_I^T \partial\Phi_I(C_IV^{-1}X(t)) \end{aligned}$$

\Downarrow

$$X'(t) - VAV^{-1}X(t) - VB^{II}(D_{II} + \partial\Phi_{II}^{*,-})^{-1}(-C_{II}V^{-1}X(t)) - Vf(t) \in -\partial\Xi_I(X(t))$$

from which one deduces (17). The case $p_I = 0$ (resp. $p_{II} = 0$) can be deduced from the previous relations in removing the terms indexed by I (resp. II). The system has therefore been transformed from (a) to (b) in figure 1, which are equivalent representations. As will be made clear in the next section, the transformation consists of inserting the Lipschitz continuous part of the multivalued nonlinearity, into the continuous dynamics of the system.

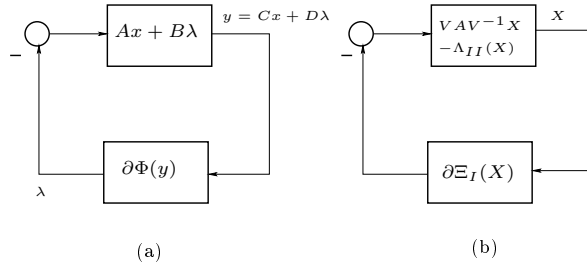


Figure 1: Lur'e system transformation.

3.1.2 The operator $x \mapsto VB^{II}(D_{II} + \partial\Phi_{II}^{*, -})^{-1}(-C_{II}V^{-1}x)$

In this section, we suppose that $p_{II} \geq 1$. The following two results give conditions on D_{II} and $\Phi_{II}(\cdot)$ ensuring that the operator $z \in \mathbb{R}^{p_{II}} \mapsto (D_{II} + \partial\Phi_{II}^{*, -})^{-1}(z)$ is well-defined, single-valued and Lipschitz continuous, *i.e.* such that Assumption 4 is satisfied. The operator $\Lambda_{II} : x \in \mathbb{R}^n \mapsto VB^{II}(D_{II} + \partial\Phi_{II}^{*, -})^{-1}(-C_{II}V^{-1}x)$ is then consequently also well-defined, single-valued and Lipschitz continuous.

Proposition 1 *Suppose that D_{II} is positive definite and $\Phi_{II}(\cdot)$ is proper convex and lower semicontinuous. Then the operator $(D_{II} + \partial\Phi_{II}^{*, -})^{-1}$ is well-defined, single-valued and Lipschitz continuous.*

Proof: The conditions of the proposition ensure (see *e.g.* [2]) that for all $q \in \mathbb{R}^{p_{II}}$ there exists a unique $z = z(q) \in \mathbb{R}_+^{p_{II}}$ such that

$$\langle D_{II}z - q, v - z \rangle + \Phi_{II}^{*, -}(v) - \Phi_{II}^{*, -}(z) \geq 0, \forall v \in \mathbb{R}^{p_{II}},$$

that is equivalent to $D_{II}z - q \in -\partial\Phi_{II}^{*, -}(z)$. The operator $(D_{II} + \partial\Phi_{II}^{*, -})^{-1} : \mathbb{R}^p \rightarrow \mathbb{R}^p; q \mapsto (D_{II} + \partial\Phi_{II}^{*, -})^{-1}(q)$ is thus well-defined and single-valued. It is also Lipschitz continuous. Indeed, let $q_1, q_2 \in \mathbb{R}^p$ be given. Set $z_1 = (D_{II} + \partial\Phi_{II}^{*, -})^{-1}(q_1)$ and $z_2 = (D_{II} + \partial\Phi_{II}^{*, -})^{-1}(q_2)$. We have $\langle D_{II}z_1 - q_1, z_2 - z_1 \rangle + \Phi_{II}^{*, -}(z_2) - \Phi_{II}^{*, -}(z_1) \geq 0$ and $\langle D_{II}z_2 - q_2, z_1 - z_2 \rangle + \Phi_{II}^{*, -}(z_1) - \Phi_{II}^{*, -}(z_2) \geq 0$ and thus $\langle D_{II}(z_1 - z_2), z_1 - z_2 \rangle \leq \langle q_1 - q_2, z_1 - z_2 \rangle$. The matrix D is positive definite and thus $(\forall x \in \mathbb{R}^n) : \langle D_{II}x, x \rangle \geq \frac{\lambda_1(D_{II} + D_{II}^T)}{2} \|x\|^2$, where $\lambda_1(D_{II} + D_{II}^T) > 0$ is the smallest eigenvalue of the matrix $D_{II} + D_{II}^T$. Thus $\|z_1 - z_2\| \leq \frac{2}{\lambda_1(D_{II} + D_{II}^T)} \|q_1 - q_2\|$ and then:

$$\|(D_{II} + \partial\Phi_{II}^{*, -})^{-1}(q_1) - (D_{II} + \partial\Phi_{II}^{*, -})^{-1}(q_2)\| \leq \frac{2}{\lambda_1(D_{II} + D_{II}^T)} \|q_1 - q_2\|.$$

■

Let us recall that a P-matrix is a matrix with all its principal minors positive [20].

Proposition 2 *Suppose that D_{II} is a P-matrix and $\Phi_{II}(\cdot) = \Psi_{\mathbb{R}_+^{p_{II}}}(\cdot)$. Then the operator $(D_{II} + \partial\Phi_{II}^{*, -})^{-1}$ is well-defined, single-valued and Lipschitz continuous.*

Proof: Here $(\forall z \in \mathbb{R}_+^{p_{II}}) : \Phi_{II}^{*, -}(z) = \Psi_{\mathbb{R}_+^{p_{II}}}^*(-z) = \Psi_{\mathbb{R}_-^{p_{II}}}(-z) = \Psi_{\mathbb{R}_+^{p_{II}}}(z)$. Thus $(D_{II} + \partial\Phi_{II}^{*, -})^{-1} \equiv (D_{II} + \partial\Psi_{\mathbb{R}_+^{p_{II}}})^{-1}$. It is easy to check that $z = (D_{II} + \partial\Psi_{\mathbb{R}_+^{p_{II}}})^{-1}(q)$ if and only if z is solution of the complementarity problem: $z \in \mathbb{R}_+^{p_{II}}, D_{II}z - q \in \mathbb{R}_+^{p_{II}}, \langle z, D_{II}z - q \rangle = 0$. The matrix D_{II} is assumed to be a P-matrix and the well-defined single-valued Lipschitz continuity property of the solution map of the complementarity problem is in this case a well-known result, see *e.g.* [20]. ■

Let us recall that $\Phi_{II}(\cdot) = \Psi_{\mathbb{R}_+^{p_{II}}}(\cdot)$ implies the complementarity relations $0 \leq \lambda_{II}(\cdot) \perp y_{II}(t) \geq 0$. The following result concerns the important class of positive semidefinite matrices.

Proposition 3 *Suppose that D_{II} is positive semidefinite, i.e.*

$$\forall z \in \mathbb{R}^{p_{II}} : \langle D_{II}z, z \rangle \geq 0. \quad (18)$$

Suppose also that

$$\text{dom}(\Phi_{II}^{*, -}) = \overline{\text{dom}(\Phi_{II}^{*, -})}, \quad (19)$$

$$(\text{dom}(\Phi_{II}^{*, -}))_{\infty} \cap \ker(D_{II} + D_{II}^T) \cap \{z \in \mathbb{R}^{p_{II}} : D_{II}z \in (\text{dom}((\Phi_{II}^{*, -})_{\infty}))^{\star}\} = \{0\} \quad (20)$$

and

$$\mathcal{R}(C_{II}) \subset \mathcal{R}(D_{II} + D_{II}^T) \subset \ker(B^{II}). \quad (21)$$

Then the operator $x \mapsto VB^{II}(D_{II} + \partial\Phi_{II}^{, -})^{-1}(-C_{II}V^{-1}x)$ is well-defined, single-valued and Lipschitz continuous.*

Proof: The existence for any $q \in \mathbb{R}_+^{p_{II}}$ of at least one solution of the variational inequality

$$z = z(q) \in \mathbb{R}_+^{p_{II}} : \langle D_{II}z - q, v - z \rangle + \Phi_{II}^{*, -}(v) - \Phi_{II}^{*, -}(z) \geq 0, \forall v \in \mathbb{R}^{p_{II}}.$$

follows from assumptions (18), (19), (20) and Corollary 3.6 in [2]. Let $x_1, x_2 \in \mathbb{R}^{p_{II}}$ and set $q_1 = -C_{II}V^{-1}x_1, q_2 = -C_{II}V^{-1}x_2, z_1 = z(q_1)$ and $z_2 = z(q_2)$. We have

$$\langle D_{II}z_1 - q_1, v - z_1 \rangle + \Phi_{II}^{*, -}(v) - \Phi_{II}^{*, -}(z_1) \geq 0, \forall v \in \mathbb{R}^{p_{II}}.$$

and

$$\langle D_{II}z_2 - q_2, v - z_2 \rangle + \Phi_{II}^{*, -}(v) - \Phi_{II}^{*, -}(z_2) \geq 0, \forall v \in \mathbb{R}^{p_{II}}$$

from which we deduce that

$$\langle D_{II}(z_2 - z_1), z_2 - z_1 \rangle \leq \langle q_2 - q_1, z_2 - z_1 \rangle. \quad (22)$$

Let $H = \ker(D_{II} + D_{II}^T)$. We denote by P_H the orthogonal projector from $\mathbb{R}^{p_{II}}$ onto H and by $P_{H^{\perp}}$ the orthogonal projector from $\mathbb{R}^{p_{II}}$ onto the orthogonal space $H^{\perp} = \mathcal{R}(D_{II} + D_{II}^T)$. There exists a constant $c > 0$ such that

$$\forall z \in \mathbb{R}^{p_{II}} : \langle D_{II}z, z \rangle \geq c\|P_{H^{\perp}}z\|^2. \quad (23)$$

We know from (21) that $q_i = -C_{II}V^{-1}x_i \in \mathcal{R}(C_{II}) \subset H^{\perp} = \mathcal{R}(D_{II} + D_{II}^T)$ so that $P_H(q_i) = 0$ and $P_{H^{\perp}}(q_i) = q_i$ ($i = 1, 2$). Thus

$$\begin{aligned} \langle q_2 - q_1, z_2 - z_1 \rangle &= \langle P_H(q_2 - q_1), P_H(z_2 - z_1) \rangle + \langle P_{H^{\perp}}(q_2 - q_1), P_{H^{\perp}}(z_2 - z_1) \rangle \\ &= \langle q_2 - q_1, P_{H^{\perp}}(z_2 - z_1) \rangle \leq \|q_2 - q_1\| \|P_{H^{\perp}}(z_2 - z_1)\| \\ &\leq \|C_{II}V^{-1}\| \|x_2 - x_1\| \|P_{H^{\perp}}(z_2 - z_1)\|. \end{aligned} \quad (24)$$

It results from (22), (23) and (24) that

$$\|P_{H^{\perp}}(z_2 - z_1)\| \leq \frac{1}{c} \|C_{II}V^{-1}\| \|x_2 - x_1\|$$

Then recalling that by assumption $H^\perp \subset \ker(B^{II})$, we get

$$\begin{aligned} \|VB^{II}(z_2 - z_1)\| &= \|VB^{II}(P_{H^\perp}(z_2 - z_1)) + VB^{II}(P_H(z_2 - z_1))\| = \|VB^{II}(P_{H^\perp}(z_2 - z_1))\| \\ &\leq \frac{1}{c} \|VB^{II}\| \|C_{II}V^{-1}\| \|x_2 - x_1\|. \end{aligned}$$

This means that the operator $x \mapsto VB^{II}(D_{II} + \partial\Phi_{II}^{*, -})^{-1}(-C_{II}V^{-1}x)$ is well-defined, single-valued and Lipschitz continuous. ■

We now may state the next result as a corollary of Proposition 3.

Corollary 1 *Let D_{II} be positive semidefinite, and suppose that $\Phi_{II}(\cdot) = \Psi_K(\cdot)$ for some closed convex cone $K \subset \mathbb{R}^{p_{II}}$. Then if $K^\circ \cap \ker(D_{II} + D_{II}^T) = \{0\}$ and $\mathcal{R}(C_{II}) \subset \mathcal{R}(D_{II} + D_{II}^T) \subset \ker(B^{II})$, the operator $x \mapsto VB^{II}(D_{II} + \partial\Phi_{II}^{*, -})^{-1}(-C_{II}V^{-1}x)$ is well-defined, single-valued and Lipschitz continuous.* ■

The proof relies on the fact that $\text{dom}(\Psi_K) = K$ and $\Psi_K^*(\cdot) = \Psi_{K^\circ}(\cdot)$. Notice that in such a case one has the cone complementarity problem $K \ni y_{II}(t) \perp \lambda_{II}(t) \in K^* = -K^\circ$. If D_{II} is definite positive then Proposition 1 applies.

3.1.3 Existence and uniqueness of solutions

Let us now state the well-posedness result relying on Kato's Theorem.

Theorem 1 *Suppose that Assumptions 1 - 4 hold. Then for any $X_0 \in \text{Dom}(\partial\Xi_I)$ there exists a unique $X \in C^0(\mathbb{R}_+; \mathbb{R}^n)$ such that $X' \in L_{loc}^\infty(\mathbb{R}_+; \mathbb{R}^n)$, $X(\cdot)$ right-differentiable on \mathbb{R}_+ and:*

$$X(t) \in \text{Dom}(\partial\Xi_I), \quad (\forall t \geq 0), \quad (25)$$

$$\langle X'(t) - VAV^{-1}X(t) - \Lambda_{II}(X(t)) - Vf(t), v - X(t) \rangle$$

$$+ \Xi_I(v) - \Xi_I(X(t)) \geq 0, \quad \forall v \in \mathbb{R}^n, \quad (\text{a.e. } t \geq 0), \quad (26)$$

$$X(0) = X_0. \quad (27)$$

Proof: The mapping $X \mapsto -VAV^{-1}X - \Lambda_{II}(X)$ is Lipschitz continuous. We may then apply a version of Kato's Theorem (see Corollary 2.2 in [22]) to guarantee the existence and the uniqueness of the solution $X(\cdot)$ of problem (25-27). ■

Then for $x_0 \in V^{-1}\text{Dom}(\Xi_I)$, the solution $x(\cdot)$ of the problem $NSDS(A, B, C, D, \varphi_1, \dots, \varphi_p, f, x_0)$ is uniquely defined by the formula:

$$x(t) = V^{-1}X(t).$$

It results that λ_{II} (case $p_{II} \geq 1$) is uniquely defined by the formula

$$\lambda_{II}(t) = (D_{II} + \partial\Phi_{II}^{*, -})^{-1}(-CV^{-1}X(t))$$

The uniqueness of y is then a consequence of the formula:

$$y(t) = CV^{-1}X(t) + D\lambda(t) = CV^{-1}X(t) + D_{II}\lambda_{II}(t).$$

The uniqueness of λ_I (case $p_I \geq 1$) is not in general guaranteed. However, if λ_I^1 and λ_I^2 denote two solutions then necessarily

$$(\forall t \geq 0) : B^I \lambda_I^1(t) = B^I \lambda_I^2(t).$$

It results that if $\text{rank}\{B^I\} = p_I$ then the uniqueness of λ_I is also ensured.

Remark 2 Let $X = Vx$ be given. We note that if $p_I \geq 1$ then $X \in \text{Dom}(\partial \Xi_I) \Leftrightarrow C_I V^{-1}X \in \text{Dom}(\partial \Phi_I) \Leftrightarrow C_I x \in \text{Dom}(\partial \Phi_I)$. If $p_I = 0$ then $X \in \text{Dom}(\partial \Xi_I) \Leftrightarrow X \in \mathbb{R}^n \Leftrightarrow x \in \mathbb{R}^n$.

The case $p_I = p$ is given in the following corollary. Here $\Lambda \equiv 0$ and we may set

$$(\forall w \in \mathbb{R}^n) : \Xi_I(w) = \Xi(w) := \Phi(CV^{-1}w).$$

Assumption 4 is here useless and we obtain the result:

Corollary 2 Let $p_I = p$. Suppose that assumptions 1-3 hold. Then for any $X_0 \in \text{dom}(\Xi)$ there exists a unique $X \in C^0(\mathbb{R}_+; \mathbb{R}^n)$ such that $X' \in L_{loc}^\infty(\mathbb{R}_+; \mathbb{R}^n)$, $X(\cdot)$ right-differentiable on \mathbb{R}_+ and:

$$X(t) \in \text{Dom}(\partial \Xi), \quad (\forall t \geq 0), \quad (28)$$

$$\langle X'(t) - VAV^{-1}X(t) - Vf(t), v - X(t) \rangle$$

$$+ \Xi(v) - \Xi(X(t)) \geq 0, \quad \forall v \in \mathbb{R}^n, \quad (\text{a.e. } t \geq 0), \quad (29)$$

$$X(0) = X_0. \quad (30)$$

■

Under the conditions of the Corollary it follows that for $x_0 \in \mathbb{R}^n$ such that $Cx_0 \in \text{Dom}(\partial \Phi)$, the function

$$x(\cdot) = V^{-1}X(\cdot).$$

is the unique solution of the problem:

$$\begin{cases} x'(t) &= Ax(t) + B\lambda(t) + f(t) \quad (\text{a.e. } t \geq 0) \\ x(0) &= x_0 \\ y(t) &= Cx(t) \quad (\forall t \geq 0) \\ \lambda(t) &\in -\partial \Phi(y(t)) \quad (\forall t \geq 0) \end{cases}$$

Remark 3 The function y is uniquely defined by the formula $y = Cx$ and if $\text{rank}(B) = p$ then λ is also uniquely defined by the formula $B\lambda = x' - Ax - f$.

Let us now state the case $p_{II} = p$. Then $\Xi_I \equiv 0$. Here Assumptions 2 and 3 are useless and we obtain the following result:

Corollary 3 *Let $p_{II} = p$. Suppose that assumptions 1 and 4 hold. Then for any $X_0 \in \mathbb{R}^n$ there exists a unique $X \in C^0(\mathbb{R}_+; \mathbb{R}^n)$ such that $X' \in L_{loc}^\infty(\mathbb{R}_+; \mathbb{R}^n)$ and $X(\cdot)$ right-differentiable on \mathbb{R}_+ such that:*

$$X'(t) - AX(t) - B(D + \partial\Phi^{*, -})^{-1}(-CX(t)) - f(t) = 0 \text{ (a.e. } t \geq 0), \quad (31)$$

$$X(0) = X_0. \quad (32)$$

■

Then for $X_0 \in \mathbb{R}^n$ the function $X(\cdot)$ is the unique solution of the problem:

$$\begin{cases} X'(t) &= AX(t) + B\lambda(t) + f(t) \text{ (a.e. } t \geq 0) \\ X(0) &= X_0 \\ y(t) &= CX(t) + D\lambda(t) \text{ } (\forall t \geq 0) \\ \lambda(t) &\in -\partial\Phi(y(t)) \text{ } (\forall t \geq 0) \end{cases}$$

Remark 4 *If $\text{rank}(B) = p$ then λ is uniquely defined by the formula $B\lambda = X' - AX - f$ and y is then also uniquely defined by the formula $y = CX + D\lambda$.*

Remark 5 *If the operator $(D + \partial\Phi^{*, -})^{-1}$ is single-valued (see Proposition 1 and Proposition 2) then λ is uniquely defined by the formula $\lambda = (D + \partial\Phi^{*, -})^{-1}(-CX)$. Then y is also uniquely defined by the formula $y = CX + D\lambda$.*

3.1.4 A physical example

Let us consider the electrical system of Figure 2 that is composed of two resistors R with voltage/current law $u(t) = Ri(t)$, four capacitors C with voltage/current law $Cu'(t) = i(t)$, and two ideal diodes with characteristics $0 \leq v_1(t) \perp i_1(t) \geq 0$ and $0 \leq v_2(t) \perp i_3(t) \geq 0$ respectively. The state variables are $x_1(t) = \int_0^t i_1(t)dt$, $x_2(t) = \int_0^t i_2(t)dt$, $x_3(t) = v_2(t)$, and $\lambda_1(t) = -i_3(t)$, $\lambda_2(t) = v_1(t)$.

The dynamics of this circuit is given by:

$$\begin{aligned} \begin{pmatrix} x_1'(t) \\ x_2'(t) \\ x_3'(t) \end{pmatrix} &= \begin{pmatrix} \frac{-2}{RC} & \frac{1}{C} & 0 \\ \frac{1}{C} & \frac{-2}{RC} & 1 \\ 0 & 0 & 0 \end{pmatrix} \begin{pmatrix} x_1(t) \\ x_2(t) \\ x_3(t) \end{pmatrix} + \begin{pmatrix} 0 & \frac{1}{R} \\ 0 & 0 \\ \frac{1}{C} & 0 \end{pmatrix} \lambda(t), \\ 0 \leq \lambda(t) \perp y(t) &= \begin{pmatrix} 0 & 0 & 1 \\ \frac{-2}{RC} & \frac{1}{RC} & 0 \end{pmatrix} \begin{pmatrix} x_1(t) \\ x_2(t) \\ x_3(t) \end{pmatrix} + \begin{pmatrix} 0 & 0 \\ 0 & \frac{1}{R} \end{pmatrix} \lambda(t) \geq 0 \end{aligned} \quad (33)$$

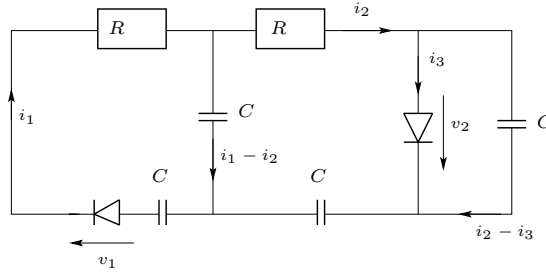


Figure 2: Electrical circuit with capacitors, resistors and ideal diodes.

The matrices A , B , C and D are easily identified. Assumptions 1-4 are satisfied as one may check that Proposition 1 (or Proposition 2) and consequently Theorem 1 apply. One has $\varphi_H(\cdot) = \psi_K(\cdot)$ with $K = \mathbb{R}^+$. It is noteworthy that one may consider any other electronic devices with current/voltage laws $v_1 \in \partial\varphi_2(i_1)$ and $-i_3 \in \partial\varphi_1(v_2)$ provided the functions $\varphi_1(\cdot)$ and $\varphi_2(\cdot)$ are proper, convex lower semicontinuous. Doing so our framework encompasses linear complementarity systems and allows for a much larger set of nonsmooth nonlinear characteristics of the electronic devices, see [3] for some examples.

3.2 Well-posedness by maximal monotonicity

It is noteworthy that the application of condition (21) in Proposition 3 implies that the symmetric part of D has a large enough range. This is not the case when D is skew-symmetric (see a four-diode bridge full wave rectifier in Example 4 in [2]) or when its symmetric part has an orthogonal range to the range of C (see a four-diode bridge wave rectifier in section 14.2.1 in [1], despite the condition (20) may be satisfied). This motivates us to look for another path to show the well-posedness of (2).

3.2.1 The existence and uniqueness result

In this section we shall not make the assumption that D possesses a structure as in (6), however a stronger assumption than Assumption 2 is made:

Assumption 5. (i) There exists a matrix $P = P^T > 0$ such that $PB = C^T$, and (ii) D is positive semidefinite.

Using the same notations as in section 3.1, one has $\lambda \in -\partial\Phi(Cx + D\lambda)$, and $Cx + D\lambda \in -\partial\Phi^{*,-}(\lambda)$. Let us define the operator $\lambda \mapsto D\lambda + \partial\Phi^{*,-}(\lambda)$. In view of the assumptions on $\Phi(\cdot)$ and of Assumption 5, the operator $(D \cdot + \partial\Phi^{*,-}(\cdot))$ is maximal monotone, being the sum of two maximal monotone operators with $\text{dom}(D \cdot) = \mathbb{R}^p$ [30, Corollary 12.44]. Now from [30, Exercise 12.8] it follows that the inverse operator $(D \cdot + \partial\Phi^{*,-})^{-1}(\cdot)$ is maximal monotone as well. It is now easy to see that the Lur'e system in (2) may be rewritten equivalently as:

$$x'(t) \in Ax(t) + B(D \cdot + \partial\Phi^{*,-})^{-1}(-Cx(t)) + f(t) \quad (34)$$

Let R be the symmetric positive definite square root of P , i.e. $R^2 = P$. Let us perform the state variable transformation $z = -Rx$. Using Assumption 5 the system in (34) may be rewritten as:

$$z'(t) \in RAR^{-1}z(t) - R^{-1}C^T(D \cdot + \partial\Phi^{*, -})^{-1}(CR^{-1}z(t)) - Rf(t) \quad (35)$$

Since R is symmetric it now follows from [30, Theorem 12.43] that the operator $z \mapsto R^{-1}C^T(D \cdot + \partial\Phi^{*, -})^{-1}(CR^{-1}z)$ is maximal monotone, provided $\mathcal{R}(CR^{-1}) \cap \text{rint}(\text{Dom}((D \cdot + \partial\Phi^{*, -})^{-1})) \neq \emptyset$.

We now may state the following:

Theorem 2 *Let Assumptions 1 and 5 hold, and suppose that $\mathcal{R}(CR^{-1}) \cap \text{rint}(\text{Dom}((D \cdot + \partial\Phi^{*, -})^{-1})) \neq \emptyset$. Let also $x_0 \in \mathbb{R}^n$ such that $-Cx_0 \in \text{Dom}((D \cdot + \partial\Phi^{*, -})^{-1}) (= \mathcal{R}(D \cdot + \partial\Phi^{*, -}))$. Then the Lur'e system in (2) possesses a unique solution that is Lipschitz continuous.*

Proof: The proof follows directly from the above developments and the application of [6, Proposition 3] (see also [5, Proposition 4.3]). ■

It is noteworthy that since $\mathcal{R}(D \cdot + \partial\Phi^{*, -}) = \text{Dom}((D \cdot + \partial\Phi^{*, -})^{-1})$ then the condition of the Theorem is equivalent to $\mathcal{R}(CR^{-1}) \cap \text{rint}(\mathcal{R}(D \cdot + \partial\Phi^{*, -})) \neq \emptyset$. It is also noteworthy that contrary to section 3.1 where the operator $x \mapsto VB^{II}(D_{II} + \partial\Phi_{II}^{*, -})^{-1}(-C_{II}V^{-1}x)$ is supposed (or shown) to be single-valued, here we allow for multivaluedness. Notice that there is no obstacle to consider “outputs” $y = Cx + D\lambda + E$ with constant E of appropriate dimension. Indeed this does not preclude for the above reasoning to work because considering composition with affine mappings preserves also the maximal monotonicity [30, Theorem 12.43], provided the range intersection condition is still satisfied.

Notice that if $p_I = 0$ and if we rely on the results of section 3.1, then we impose that the operator $(D \cdot + \partial\Phi^{*, -})^{-1}$ is single-valued, which is not the case in this section where it is allowed to be multivalued.

Remark 6 *Assumption 5 (i) implies that the so-called Markov parameter $CB = B^T P B \geq 0$ and is symmetric. This is a relative degree condition on the quadruplet (A, B, C, D) , in the sense that if $D = 0$ and $p = 1$ then $CB > 0$ and the relative degree is equal to one.*

3.2.2 A physical example

Let us consider the four-diode bridge wave rectifier in figure 3, with a capacitor $\mathbf{C} >$, an inductance $\mathbf{L} > 0$, a resistor $\mathbf{R} > 0$. Its dynamics is given by [1]:

$$\begin{bmatrix} x'_1(t) \\ x'_2(t) \end{bmatrix} = \begin{bmatrix} 0 & -\frac{1}{\mathbf{C}} \\ \frac{1}{\mathbf{L}} & 0 \end{bmatrix} \begin{bmatrix} x_1(t) \\ x_2(t) \end{bmatrix} + \begin{bmatrix} 0 & 0 & -\frac{1}{\mathbf{C}} & \frac{1}{\mathbf{C}} \\ 0 & 0 & 0 & 0 \end{bmatrix} \lambda(t) \quad (36)$$

$$0 \leq y(t) \perp \lambda(t) \geq 0$$

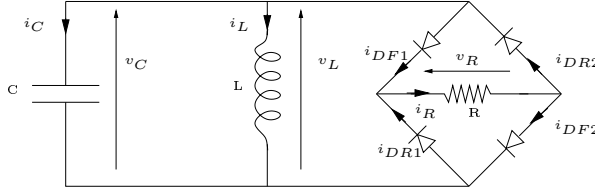


Figure 3: A 4-diode bridge wave rectifier.

where $x_1 = v_L$, $x_2 = i_L$, $\lambda = (-v_{DR1} - v_{DF2} \ i_{DF1} \ i_{DR2})^T$, $y = (i_{DR1} \ i_{DF2} - v_{DF1} - v_{DR2})^T$ and

$$y = \begin{bmatrix} 0 & 0 \\ 0 & 0 \\ -1 & 0 \\ 1 & 0 \end{bmatrix} \begin{bmatrix} x_1 \\ x_2 \end{bmatrix} + \begin{bmatrix} \frac{1}{R} & \frac{1}{R} & -1 & 0 \\ \frac{1}{R} & \frac{1}{R} & 0 & -1 \\ 1 & 0 & 0 & 0 \\ 0 & 1 & 0 & 0 \end{bmatrix} \lambda \quad (37)$$

Notice that in this example one has $n = 2$ and $p = 4$. The matrix D is full rank, semi-definite positive. The relation $PB = C^T$ holds with $P = \begin{pmatrix} \mathbf{C} & 0 \\ 0 & p_{22} \end{pmatrix}$, $p_{22} > 0$, where $\mathbf{C} > 0$ is the capacitor parameter. One may check that condition (20) is satisfied, however (21) is not.

As a second example, let us consider another diode-bridge that is taken from [2, Example 4]. It is simply obtained from the circuit of figure 3 by dropping the capacitor and the inductance outside the bridge, and adding a capacitor \mathbf{C} in parallel with the resistor inside the bridge. The state x is the voltage across the capacitor. We assume that each diode has a current/voltage law of the form $V_k \in -\partial\varphi_k(i_k)$, $k = 1, 2, 3, 4$, for some convex, proper lower semicontinuous functions $\varphi_k(\cdot)$. The dynamics of this circuit is given by:

$$x'(t) = -\frac{1}{RC}x(t) + \left(\frac{1}{C} \ 0 \ \frac{1}{C} \ 0\right) \lambda(t)$$

$$y(t) = \begin{pmatrix} 1 \\ 0 \\ 1 \\ 0 \end{pmatrix} x(t) + \begin{pmatrix} 0 & -1 & 0 & 0 \\ 1 & 0 & 1 & -1 \\ 0 & -1 & 0 & 0 \\ 0 & 1 & 0 & 0 \end{pmatrix} \lambda(t) \quad (38)$$

with $y_1 = V_{DR1}$, $y_2 = i_{DF2}$, $y_3 = V_{DF1}$, $y_4 = V_{DR2}$, and $\lambda = (i_{DR1} \ V_{DF2} \ i_{DF1} \ i_{DR2})^T$. The matrix D has rank 2, it is positive semidefinite since it is skew symmetric. Assumption 5 is satisfied with $P = \mathbf{C} > 0$. We may then choose $R = \sqrt{\mathbf{C}}$. One has $\mathcal{R}(CR^{-1}) = \alpha(1 \ 0 \ 1 \ 0)^T$, $\alpha \in \mathbb{R}$, and $\mathcal{R}(D) = \{\alpha(-1 \ 0 \ -1 \ 1)^T + \beta(0 \ 1 \ 0 \ 0)^T, \alpha \in \mathbb{R}, \beta \in \mathbb{R}\}$. The condition of Theorem 2 is satisfied for a large range of functions $\varphi_i(\cdot)$. This is the case in the complementarity framework if $\varphi_i[\cdot] = \psi_{K_i}(\cdot)$ with $K_i = \mathbb{R}^+$: then $\varphi_i^*[\cdot] = \psi_{K_i^\circ}(\cdot)$ where $K_i^\circ = \mathbb{R}^-$ is the polar cone to K_i .

Remark 7 (Time-discretization) *The implicit Euler time-stepping method studied in [5] can be used to discretize the Lur'e system under study. Under the stated assumptions the method may be shown to converge, and to be of order $\frac{1}{2}$ or 1 (in the case where $\varphi_i(\cdot)$ are the indicator functions of closed convex sets,*

i.e. the complementarity framework. Therefore our results permit to encompass the results of [17], since we do not assume the stability of the matrix A and we may have $p > n$. Moreover we do not need that the matrix $\begin{pmatrix} B \\ D + D^T \end{pmatrix}$ be full column rank as in [17, 16]. It is noteworthy that for such types of nonsmooth dynamical systems, event-driven methods [1] may fail to integrate the system even on arbitrarily small intervals of time, and time-stepping methods are the only available methods.

3.2.3 State observer design

This example illustrates how the foregoing results on well-posedness may be used for the design of asymptotically stable state observers for the Lur'e system in (2). The state x and the multiplier λ are not available for feedback. The measured output of (2) is supposed to possess the general form: $z = Gx + F\lambda$, $z \in \mathbb{R}^m$, $G \in \mathbb{R}^{m \times n}$, $F \in \mathbb{R}^{m \times p}$. It may also be assumed that $m < n$. The following state observer is proposed:

$$\begin{cases} \xi'(t) = A\xi(t) + B\gamma(t) + f(t) + L(z(t) - G\xi(t) - F\gamma(t)) \\ \gamma(t) \in -\partial\Phi(C\xi(t) + D\gamma(t)) \end{cases} \quad (39)$$

which is equivalently rewritten as:

$$\begin{cases} \xi'(t) = (A - LG)\xi(t) + (B - LF)\gamma(t) + LGx(t) + LF\lambda(t) + f(t) \\ \gamma(t) \in -\partial\Phi(C\xi(t) + D\gamma(t)) \end{cases} \quad (40)$$

Let us make the following assumption:

Assumption 6 The observed dynamics in (2) is well-posed, i.e. it possesses for each admissible initial condition a unique right-differentiable continuous solution with bounded derivative, defined on $[0, +\infty)$.

Starting from this assumption, we may consider the term $LGx(t) + LF\lambda(t) + f(t)$ as an exogenous function of time for the observer dynamics, denoted as $g(t)$. The observer dynamics in (40) is therefore under the general form in (2). Its well-posedness may be analyzed similarly. Notice that we may equivalently rewrite (40) as:

$$\begin{cases} \xi'(t) = (A - LG)\xi(t) + (B - LF)\gamma(t) + LGx(t) + LF\lambda(t) + f(t) \\ C\xi(t) + D\gamma(t) \in -\partial\Phi^{*, -}(\gamma(t)) \end{cases} \quad (41)$$

Let us suppose that both the observed system and the observer are well-posed, and let us form the so-called error dynamics with state vector $e = x - \xi$:

$$\begin{cases} e'(t) = (A - LG)e(t) + (B - LF)(\lambda(t) - \gamma(t)) \\ Ce(t) + D(\lambda(t) - \gamma(t)) \in -\partial\Phi^{*, -}(\lambda(t)) + \partial\Phi^{*, -}(\gamma(t)) \end{cases} \quad (42)$$

The proof of the asymptotic stability of (42) is similar to the proof of theorem 4.4 in [8] and is omitted here.

In [8, 9] it is assumed that $D = 0$, $\Phi(\cdot) = \psi_K(\cdot)$ for some closed convex set K , and $p \leq n$. However y may depend explicitly on an absolutely continuous (resp. piecewise AC) function of time. Then $K = K(t)$ varies in an absolutely continuous way (resp. in a piecewise AC way allowing for state jumps) which is not the case in this paper. Hence the so-called extended observers (see [8, Equ.(7)]) cannot be designed relying on the above well-posedness results.

4 Stability results

Once the Lur'e system has been shown to be well-posed, one can study its stability properties. Let us set:

$$\mathcal{X}_0 = \begin{cases} \{x \in \mathbb{R}^n : C_I x \in \text{Dom}(\partial\Phi_I)\} & \text{if } p_I \geq 1 \\ \mathbb{R}^n & \text{if } p_I = 0. \end{cases}$$

Then, for $x_0 \in \mathcal{X}_0$, problem $NSDS(A, B, C, D, 0, \varphi_1, \dots, \varphi_p, x_0)$ has a unique solution

$$x(\cdot; x_0) : \mathbb{R}_+ \rightarrow \mathbb{R}^n; t \mapsto \mathbb{R}^n.$$

We note that problem $NSDS(A, B, C, D, 0, \varphi_1, \dots, \varphi_p, x_0)$ can be written as follows:

$$\begin{cases} (\text{a.e. } t \geq 0) : x'(t) = Ax(t) + B\lambda(t) \\ x(0) = x_0 \\ (\forall t \geq 0) : y(t) = Cx(t) + D\lambda(t) \\ (\forall t \geq 0) : y(t) \in -\partial\Phi^{*, -}(\lambda(t)) \end{cases} \quad (43)$$

and is denoted as the system $(A, B, C, D, \Phi^{*, -})$. Let us state the following:

Assumption 7 The initial data satisfy:

$$0 \in \mathcal{X}_0 \text{ and } \Lambda_{II}(0) \in \partial\Xi_I(0).$$

Let us recall that the system in (43) may be written equivalently as the variational inequality:

$$\begin{aligned} & \langle X'(t) - VAV^{-1}X(t) - \Lambda_{II}(X(t)), v - X(t) \rangle \\ & + \Xi_I(v) - \Xi_I(X(t)) \geq 0, \quad \forall v \in \mathbb{R}^n, \end{aligned} \quad (44)$$

with

$$(\forall t \geq 0) : X(t) = Vx(t).$$

We see that Assumption 7 ensures that

$$(\forall t \geq 0) : x(t; 0) = 0.$$

In this section, we suppose that the Lur'e system is well-posed, *i.e.* Assumptions 1 through 4 or Assumptions 1 and 5 hold. We also suppose that Assumption 7 holds.

4.1 Dissipativity and stability results

We may now examine the question of stability of this last trivial solution. For this we shall rely on the property of dissipativity of dynamical systems, which plays a central role in control and feedback systems theory [12]. Let us first introduce several definitions of dissipative systems.

Definition 1 *One says that the system (A, B, C, D) is passive provided that there exists a symmetric and positive definite matrix $P \in \mathbb{R}^{n \times n}$ such that the matrix*

$$Q = \begin{pmatrix} A^T P + PA & PB - C^T \\ B^T P - C & -(D + D^T) \end{pmatrix} \quad (45)$$

is negative semidefinite.

It is easy to show that the linear matrix inequality $Q \leq 0$ in (45) is equivalent to the so-called dissipation inequality:

$$\frac{1}{2}x^T(t_1)Px(t_1) - \frac{1}{2}x^T(t_0)Px(t_0) = \int_{t_0}^{t_1} y^T(t)\lambda(t)dt + \int_{t_0}^{t_1} (x^T(t) \lambda^T(t))Q \begin{pmatrix} x(t) \\ \lambda(t) \end{pmatrix} dt$$

for any $t_1, t_0, t_1 \geq t_0$, see for instance Chapter 3 in [12]. One may also define the passivity with a positive semidefinite P . Then if the pair (C, A) is observable it follows that the solutions of the LMI $Q \leq 0$ are full-rank, hence P is positive definite [18].

Definition 2 *One says that the system (A, B, C, D) is strictly passive provided that there exists a symmetric and positive definite matrix $P \in \mathbb{R}^{n \times n}$ and a real $\varepsilon > 0$ such that*

$$Q = \begin{pmatrix} A^T P + PA + \varepsilon P & PB - C^T \\ B^T P - C & -(D + D^T) \end{pmatrix} \quad (46)$$

is negative semidefinite.

These two well-known definitions are now slightly extended to cope with the multivalued Lur'e systems we are dealing with.

Definition 3 *One says that the system $(A, B, C, D, \Phi^{*, -})$ is passive provided that there exists a symmetric and positive definite matrix $P \in \mathbb{R}^{n \times n}$ such that*

$$(\forall x \in \mathbb{R}^n, z \in \mathbb{R}^p) : \langle PAx, x \rangle + \langle (PB - C^T)z, x \rangle - \langle Dz, z \rangle + \Phi^{*, -}(0) - \Phi^{*, -}(z) \leq 0.$$

Definition 4 *One says that the system $(A, B, C, D, \Phi^{*, -})$ is strictly passive provided that there exists a symmetric and positive definite matrix $P \in \mathbb{R}^{n \times n}$ and a real $\varepsilon > 0$ such that*

$$\begin{aligned} (\forall x \in \mathbb{R}^n, z \in \mathbb{R}^p) : \langle PAx + \frac{1}{2}\varepsilon Px, x \rangle + \langle (PB - C^T)z, x \rangle - \langle Dz, z \rangle \\ + \Phi^{*, -}(0) - \Phi^{*, -}(z) \leq 0. \end{aligned}$$

Let us note that $(A, B, C, D, \Phi^{*, -})$ is strictly passive if and only if there exists $\varepsilon > 0$ such that $(A + \frac{1}{2}\varepsilon I, B, C, D, \Phi^{*, -})$ is passive.

Proposition 4 *If the system (A, B, C, D) is passive and*

$$(\forall z \in \mathbb{R}^p) : \Phi^{*,-}(z) \geq \Phi^{*,-}(0)$$

then the system $(A, B, C, D, \Phi^{,-})$ is passive.*

Proof: See the proof of Proposition 5 with $\varepsilon = 0$. ■

Proposition 5 *If the system (A, B, C, D) is strictly passive and*

$$(\forall z \in \mathbb{R}^p) : \Phi^{*,-}(z) > \Phi^{*,-}(0)$$

then the system $(A, B, C, D, \Phi^{,-})$ is strictly passive.*

Proof: Indeed,

$$\begin{aligned} & \langle PAx + \frac{1}{2}\varepsilon Px, x \rangle + \langle (PB - C^T)z, x \rangle - \langle Dz, z \rangle + \Phi^{*,-}(0) - \Phi^{*,-}(z) \\ = & \frac{1}{2}\langle (A^T P + PA)x + \varepsilon Px, x \rangle + \frac{1}{2}\langle [(PB - C^T) + (B^T P - C)]z, x \rangle - \frac{1}{2}\langle (D + D^T)z, z \rangle \\ & + \Phi^{*,-}(0) - \Phi^{*,-}(z) = \frac{1}{2} \begin{pmatrix} x^T & z^T \end{pmatrix} Q \begin{pmatrix} x \\ z \end{pmatrix} + \Phi^{*,-}(0) - \Phi^{*,-}(z) \end{aligned}$$

and the result holds. ■

Theorem 3 *1) If the system $(A, B, C, D, \Phi^{*,-})$ is passive then there exists a constant $C > 0$ such that for each $x_0 \in \mathcal{X}_0$:*

$$(\forall t \geq 0) : \|x(t; x_0)\| \leq C\|x_0\|.$$

2) If the system $(A, B, C, D, \Phi^{,-})$ is strictly passive then there exist constants $C > 0$ and $\alpha > 0$ such that for each $x_0 \in \mathcal{X}_0$:*

$$(\forall t \geq 0) : \|x(t; x_0)\| \leq C\|x_0\|e^{-\alpha t}.$$

Proof: Let $x_0 \in \mathcal{X}_0$ be given. We set $(\forall t \geq 0) : x(t) = x(t; x_0)$. Let us first prove part 2) of the theorem. We have :

$$x'(t) = Ax(t) + B\lambda(t) \implies Px'(t) = PAx(t) + PB\lambda(t)$$

$$\implies \langle Px'(t), x(t) \rangle = \langle PAx(t), x(t) \rangle + \langle (PB - C^T)\lambda(t), x(t) \rangle + \langle C^T\lambda(t), x(t) \rangle.$$

The matrix P is symmetric and positive definite and thus : $(\forall x \in \mathbb{R}^n) : \langle Px, x \rangle \geq \lambda_1(P)\|x\|^2$ where $\lambda_1(P) > 0$ is the smallest eigenvalue of the matrix P . We have

$$\langle Px'(t), x(t) \rangle = \frac{1}{2} \frac{d}{dt} \langle Px(t), x(t) \rangle$$

We have also ($\forall t \geq 0$):

$$\begin{aligned} y(t) \in -\partial\Phi^{*, -}(\lambda(t)) &\implies Cx(t) + D\lambda(t) \in -\partial\Phi^{*, -}(\lambda(t)) \\ \implies \langle Cx(t) + D\lambda(t), v - \lambda(t) \rangle + \Phi^{*, -}(v) - \Phi^{*, -}(\lambda(t)) &\geq 0, \forall v \in \mathbb{R}^p. \end{aligned}$$

Thus ($\forall t \geq 0$):

$$-\langle Cx(t), \lambda(t) \rangle - \langle D\lambda(t), \lambda(t) \rangle + \Phi^{*, -}(0) - \Phi^{*, -}(\lambda(t)) \geq 0$$

and thus ($\forall t \geq 0$)

$$\langle x(t), C^T \lambda(t) \rangle \leq -\langle D\lambda(t), \lambda(t) \rangle + \Phi^{*, -}(0) - \Phi^{*, -}(\lambda(t)).$$

It results that ($\forall t \geq 0$):

$$\begin{aligned} \frac{d}{dt} \langle Px(t), x(t) \rangle &= 2 \left[\langle PAx(t), x(t) \rangle + \langle (PB - C^T)\lambda(t), x(t) \rangle + \langle C^T \lambda(t), x(t) \rangle \right] \\ &\leq 2 \left[\langle PAx(t), x(t) \rangle + \langle (PB - C^T)\lambda(t), x(t) \rangle \right] - 2 \langle D\lambda(t), \lambda(t) \rangle + 2\Phi^{*, -}(0) - 2\Phi^{*, -}(\lambda(t)) \\ &= 2 \left[\langle PAx(t) + \frac{1}{2}\varepsilon x(t), x(t) \rangle + \langle (PB - C^T)\lambda(t), x(t) \rangle \right] - 2 \langle D\lambda(t), \lambda(t) \rangle \\ &\quad + 2\Phi^{*, -}(0) - 2\Phi^{*, -}(\lambda(t)) - \varepsilon \langle Px(t), x(t) \rangle \\ &\leq -\langle \varepsilon Px(t), x(t) \rangle \leq -\varepsilon \lambda_1(P) \|x(t)\|^2. \end{aligned}$$

Thus

$$\langle Px(t), x(t) \rangle \leq \langle Px_0, x_0 \rangle - \varepsilon \lambda_1(P) \int_0^t \|x(s)\|^2 ds.$$

Hence

$$\|x(t)\|^2 \leq \frac{\langle Px_0, x_0 \rangle}{\lambda_1(P)} - \varepsilon \int_0^t \|x(s)\|^2 ds.$$

It results from the Gronwall's lemma that

$$\|x(t)\|^2 \leq \frac{\langle Px_0, x_0 \rangle}{\lambda_1(P)} e^{-\varepsilon t}$$

Setting

$$C = \sqrt{\frac{\|P\|}{\lambda_1(P)}}, \quad \alpha = \frac{\varepsilon}{2},$$

we have proved that

$$(\forall t \geq 0) : \|x(t)\| \leq C \|x_0\| e^{-\alpha t}$$

The proof of part 1) of the theorem is obtained as above by setting $\varepsilon = 0$. ■

Remark 8 *i) If the system $(A, B, C, D, \Phi^{*, -})$ is passive then for each $\varepsilon > 0$, there exists $\delta > 0$ such that*

$$(x_0 \in \mathcal{X}_0, \|x_0\| \leq \delta) \implies (\forall t \geq 0) : \|x(t; x_0)\| \leq \varepsilon.$$

This relation ensures the stability of the trivial solution.

ii) If the system $(A, B, C, D, \Phi^{, -})$ is strictly passive then the trivial solution is stable and*

$$(x_0 \in \mathcal{X}_0) \implies \lim_{t \rightarrow +\infty} \|x(t; x_0)\| = 0.$$

This last relation ensures the global attractivity of the trivial solution.

4.2 An implication of dissipativity

Suppose that the linear matrix inequality (LMI) in (45) is satisfied for some $P = P^T > 0$, and that D has the form in (6). Then using for instance the Schur complement Lemmas A.64 and A.65 in [12] it may be deduced that $D + D^T \geq 0$ and that $PB^I = C_I^T$ while

$$Q = \begin{pmatrix} A^T P + PA & PB_{II} - C_{II}^T \\ (B_{II}^I)^T P - C_{II} & -(D_{II} + D_{II}^T) \end{pmatrix} \leq 0.$$

Therefore (12) holds with $W^2 = P$. The application of the well-posedness results (and in particular whether Assumption 4 holds or not) then depends on whether the conditions of Propositions 1, 2 or 3 hold.

When the matrix D is skew symmetric with $p_{II} = p$ (see for instance (38)) then $D + D^T = 0$ and one may again use Lemma A.64 in [12] to deduce that Assumption 5 (i) holds.

4.3 Comments

The existence and uniqueness results, as well as the stability, are focused on the state $x(\cdot)$. The multiplier $\lambda(\cdot)$ is not considered. In practice however λ may be a vector that contains physical variables (see section 3.1.4 and 3.2.2 with the circuits where λ contains voltages and currents). It may then be better to consider the whole vector $\begin{pmatrix} x \\ \lambda \end{pmatrix}$ into the well-posedness and the stability analysis. This is outside the scope of the present work, anyway.

5 Invariance results

In this section it is shown that the Krasovskii-LaSalle invariance principle extends to the autonomous multivalued Lur'e system under study (43). The first theorem concerns the continuity of the solutions with respect to the initial condition. We suppose that the Lur'e system is well-posed, *i.e.* Assumptions 1 through 4 or Assumptions 1 and 5 hold. We also suppose that Assumption 7 holds all through this section.

Theorem 4 *If the system (A, B, C, D) is passive then for each $t \geq 0$, the function*

$$x(t; \cdot) : \mathcal{X}_0 \rightarrow \mathbb{R}^n; x_0 \mapsto x(t; x_0)$$

is Lipschitz continuous.

Proof: Let $x_1^0, x_2^0 \in \mathcal{X}_0$ be given and set

$$(\forall t \geq 0) : x_1(t) = x(t; x_1^0), \quad x_2(t) = x(t; x_2^0).$$

Let also $\lambda_1(t)$ and $\lambda_2(t)$ be such that:

$$Cx_1(t) + D\lambda_1(t) \in -\partial\Phi^{*, -}(\lambda_1(t))$$

and

$$Cx_2(t) + D\lambda_2(t) \in -\partial\Phi^{*, -}(\lambda_2(t))$$

We have

$$\begin{aligned} & \langle P(x'_1(t) - x'_2(t)), x_1(t) - x_2(t) \rangle = \\ & \langle PA(x_1(t) - x_2(t)), x_1(t) - x_2(t) \rangle + \langle PB(\lambda_1(t) - \lambda_2(t)), x_1(t) - x_2(t) \rangle. \end{aligned}$$

Thus

$$\begin{aligned} & \frac{d}{dt} \langle P(x_1 - x_2)(t), (x_1 - x_2)(t) \rangle = 2[\langle PA(x_1(t) - x_2(t)), x_1(t) - x_2(t) \rangle \\ & + \langle (PB - C^T)(\lambda_1(t) - \lambda_2(t)), x_1(t) - x_2(t) \rangle + \langle C^T(\lambda_1(t) - \lambda_2(t)), x_1(t) - x_2(t) \rangle] \end{aligned}$$

We have

$$\langle Cx_1(t) + D\lambda_1(t), v - \lambda_1(t) \rangle + \Phi^{*, -}(v) - \Phi^{*, -}(\lambda_1(t)) \geq 0, \forall v \in \mathbb{R}^p.$$

and

$$\langle Cx_2(t) + D\lambda_2(t), v - \lambda_2(t) \rangle + \Phi^{*, -}(v) - \Phi^{*, -}(\lambda_2(t)) \geq 0, \forall v \in \mathbb{R}^p.$$

It results that

$$\langle Cx_1(t) + D\lambda_1(t), \lambda_2(t) - \lambda_1(t) \rangle + \Phi^{*, -}(\lambda_2(t)) - \Phi^{*, -}(\lambda_1(t)) \geq 0$$

and

$$\langle Cx_2(t) + D\lambda_2(t), \lambda_1(t) - \lambda_2(t) \rangle + \Phi^{*, -}(\lambda_1(t)) - \Phi^{*, -}(\lambda_2(t)) \geq 0,$$

from which we deduce that

$$\langle C(x_2(t) - x_1(t)), \lambda_2(t) - \lambda_1(t) \rangle \leq -\langle D(\lambda_2(t) - \lambda_1(t)), \lambda_2(t) - \lambda_1(t) \rangle.$$

Thus

$$\begin{aligned} & \frac{d}{dt} \langle P(x_1 - x_2)(t), (x_1 - x_2)(t) \rangle \leq 2[\langle PA(x_1(t) - x_2(t)), x_1(t) - x_2(t) \rangle \\ & + \langle (PB - C^T)(\lambda_1(t) - \lambda_2(t)), x_1(t) - x_2(t) \rangle - \langle D(\lambda_1(t) - \lambda_2(t)), \lambda_1(t) - \lambda_2(t) \rangle] \leq 0. \end{aligned}$$

Therefore

$$\langle P(x_1(t) - x_2(t)), x_1(t) - x_2(t) \rangle \leq \langle P(x_1^0 - x_2^0), x_1^0 - x_2^0 \rangle$$

and

$$\|x_1(t) - x_2(t)\| \leq \sqrt{\frac{\|P\|}{\lambda_1(P)}} \|x_1^0 - x_2^0\|.$$

■

For $x_0 \in \mathcal{X}_0$, we denote by $\gamma(x_0)$ the orbit

$$\gamma(x_0) := \{x(\tau; x_0); \tau \geq 0\},$$

and by $\Lambda(x_0)$ the limit set

$$\Lambda(x_0) := \{z \in \mathbb{R}^n : \exists \{\tau_i\} \subset [0, +\infty); \tau_i \rightarrow +\infty \text{ and } x(\tau_i; x_0) \rightarrow z\}.$$

We say that a set $\mathcal{D} \subset X_0$ is invariant provided that

$$x_0 \in \mathcal{D} \Rightarrow \gamma(x_0) \subset \mathcal{D}.$$

We also denote by $d(s, \mathcal{M})$ the distance from a point $s \in \mathbb{R}^n$ to a set $\mathcal{M} \subset \mathbb{R}^n$, that is $d(s, \mathcal{M}) := \inf_{m \in \mathcal{M}} \|s - m\|$.

Taking advantage of the continuity property with respect to the initial conditions we may state the following:

Proposition 6 *Assume that the system (A, B, C, D) is passive. Let $x_0 \in \mathcal{X}_0$ be given. The set $\Lambda(x_0)$ is invariant.*

Proof: Let $z \in \Lambda(x_0)$ be given. There exists $\{\tau_i\} \subset [0, +\infty)$ such that $\tau_i \rightarrow +\infty$ and $x(\tau_i; x_0) \rightarrow z$. Let $\tau \geq 0$ be given. Using Theorem 4, we obtain $x(\tau; z) = \lim_{i \rightarrow \infty} x(\tau; x(\tau_i; x_0))$. Then remarking that $x(\tau; x(\tau_i; x_0)) = x(\tau + \tau_i; x_0)$, we get $x(\tau; z) = \lim_{i \rightarrow \infty} x(\tau + \tau_i; x_0)$. Thus setting $w_i := \tau + \tau_i$, we see that $w_i \geq 0$, $w_i \rightarrow +\infty$ and $x(w_i; x_0) \rightarrow x(\tau; z)$. It results that $x(\tau; z) \in \Lambda(x_0)$. ■

Finally the result of the next lemma will be used in the invariance theorem:

Lemma 1 *Assume that the system (A, B, C, D) is passive. We set*

$$(\forall x \in \mathbb{R}^n) : V(x) = \langle Px, x \rangle.$$

Let $x_0 \in \mathcal{X}_0$ be given. There exists a constant $k \in \mathbb{R}$ such that

$$(\forall x \in \Lambda(x_0)) : V(x) = k.$$

Proof: Let us set $(\forall t \geq 0)$, $x(t) = x(t; x_0)$ and $V^*(t) = V(x(t))$. As it has been checked in the proof of Theorem 3, we have

$$(\forall t \geq 0) : \frac{dV^*}{dt}(t) = 2\langle Px'(t), x(t) \rangle \leq 0.$$

It follows that $V^*(\cdot)$ is decreasing on $[0, +\infty[$. Moreover $V^*(\cdot)$ is bounded from below (by 0) on $[0, +\infty[$. It results that

$$\lim_{\tau \rightarrow +\infty} V(x(\tau; x_0)) = k$$

for some $k \in \mathbb{R}$. Let $y \in \Lambda(x_0)$ be given. There exists $\{\tau_i\} \subset [0, +\infty)$ such that $\tau_i \rightarrow +\infty$ and $x(\tau_i; x_0) \rightarrow y$. By continuity

$$\lim_{i \rightarrow +\infty} V(x(\tau_i; x_0)) = V(y).$$

Therefore $V(y) = k$. Here y has been chosen arbitrary in $\Lambda(x_0)$ and thus

$$(\forall y \in \Lambda(x_0)) : V(y) = k. \quad \blacksquare$$

The invariance theorem for autonomous passive multivalued Lur'e systems (2) can now be stated:

Theorem 5 (*Invariance Theorem*) *Assume that the system (A, B, C, D) is passive. Assume also that:*

$$(\forall x \in \mathbb{R}^p, x \neq 0) : \Phi^{*, -}(x) > \Phi^{*, -}(0).$$

Let \mathcal{M} be the largest invariant subset of

$$E = \{z \in \mathbb{R}^n : \langle PAz, z \rangle = 0\}.$$

Then for each $x_0 \in \mathcal{X}_0$, the orbit $\gamma(x_0)$ is bounded and

$$\lim_{\tau \rightarrow +\infty} d(x(\tau; x_0), \mathcal{M}) = 0.$$

Proof: Here $(A, B, C, D, \Phi^{*, -})$ is passive since (A, B, C, D) is passive and $(\forall x \in \mathbb{R}^p) : \Phi^{*, -}(x) \geq \Phi^{*, -}(0)$ (see Proposition 4). The set $\gamma(x_0)$ is thus bounded (see Theorem 3) and following standard arguments (see Remark 3.1 iii) and iv) in [4]), we deduce that $\Lambda(x_0)$ is nonempty and

$$\lim_{\tau \rightarrow +\infty} d(x(\tau; x_0), \Lambda(x_0)) = 0.$$

Let us now check that $\Lambda(x_0) \subset E$. From Lemma 1, there exists $k \in \mathbb{R}$ such that

$$(\forall x \in \Lambda(x_0)) : V(x) = k.$$

Let $z \in \Lambda(x_0)$ be given. Using Proposition 6, we see that $(\forall t \geq 0) : x(t; z) \in \Lambda(x_0)$ and thus

$$(\forall t \geq 0) : V(x(t; z)) = k.$$

Thus

$$\frac{d}{dt} V(x(t; z)) = 0, \text{ a.e. } t \geq 0. \quad (47)$$

It results that for a.e. $t \geq 0$:

$$\langle PAx(t; z), x(t; z) \rangle + \langle PB\lambda(t; z), x(t; z) \rangle = 0$$

with

$$Cx(t; z) + D\lambda(t; z) \in -\partial\Phi^{*, -}(\lambda(t; z)).$$

Thus

$$\begin{aligned} 0 &= \langle PAx(t; z), x(t; z) \rangle + \langle (PB - C^T)\lambda(t; z), x(t; z) \rangle + \langle C^T\lambda(t; z), x(t; z) \rangle \\ &\leq \langle PAx(t; z), x(t; z) \rangle + \langle (PB - C^T)\lambda(t; z), x(t; z) \rangle \\ &\quad - \langle D\lambda(t; z), \lambda(t; z) \rangle + \Phi^{*, -}(0) - \Phi^{*, -}(\lambda(t; z)) \leq \Phi^{*, -}(0) - \Phi^{*, -}(\lambda(t; z)) \leq 0. \end{aligned}$$

It results that for a.e. $t \geq 0$:

$$\Phi^{*, -}(\lambda(t; z)) = \Phi^{*, -}(0).$$

and then

$$\lambda(t; z) = 0.$$

It results that for a.e. $t \geq 0$ and by continuity for all $t \geq 0$:

$$\langle PAx(t; z), x(t; z) \rangle = 0$$

Taking the limit as $t \rightarrow 0$, we obtain

$$\langle PAz, z \rangle = 0$$

It results that $z \in E$. Finally $\Lambda(x_0) \subset \mathcal{M}$ since $\Lambda(x_0) \subset E$ and $\Lambda(x_0)$ is invariant. ■

Remark 9 Denoting by \mathcal{S} the set of stationary solutions of our problem, i.e.

$$\mathcal{S} = \{z \in \mathbb{R}^n : Az + B\lambda = 0; Cz + D\lambda \in -\partial\Phi^{*,\cdot}(\lambda)\}.$$

It is clear that \mathcal{S} is invariant and we check easily that the assumptions of Theorem 5 imply that

$$\mathcal{S} \subset E.$$

Then if we can prove that \mathcal{S} is the largest invariant subset of E then we may assert that for any $x_0 \in X_0$, $\lim_{\tau \rightarrow +\infty} d(x(\tau; x_0), \mathcal{S}) = 0$.

Remark 10 (Feedback system) In the case $y = Cx + D\lambda + Fu$ and $f(t) = Eu(t)$, where $u(\cdot)$ is some m -dimensional control input, then the study of this paper may be used to analyze feedback controllers of the form $u = Sx + G\lambda$. It suffices to replace (A, B, C, D) by $(A + ES, B + EG, C + FS, D + FG)$ in the analysis. For instance the condition (i) of Assumption 5 can be formulated as the problem:

P1: Find $P = P^T > 0$, $P \in \mathbb{R}^{n \times n}$, and $S \in \mathbb{R}^{m \times n}$, $G \in \mathbb{R}^{m \times p}$ such that $P(B + EG) = (C + FS)^T$.

The feedback stabilization (resp. asymptotic stabilization) issue via dissipativity (Proposition 4 or 5 and Theorem 3) may then take the form of the nonlinear matrix inequality problem:

P2: Find $P = P^T > 0$, $P \in \mathbb{R}^{n \times n}$, $S \in \mathbb{R}^{m \times n}$, and $G \in \mathbb{R}^{m \times p}$ such that

$$\begin{pmatrix} (A + ES)^T P + P(A + ES) & P(B + EG) - (C + FS)^T \\ (B + EG)^T P - (C + FS) & -(D + FG) - (D + FG)^T \end{pmatrix} \leq 0 \text{ (resp. } < 0) \quad (48)$$

This problem reduces, if Problem **P1** is solved with some P , to find S and G such that $(A + ES)^T P + P(A + ES) \leq 0$ and $-(D + FG) - (D + FG)^T \leq 0$. The fact that the nonlinear matrix inequality (48) possesses a solution relies on invertibility and minimum phase properties of the quadruple (A, E, C, F) [12, Proposition 5.39].

6 Conclusions

In this paper a class of Lur'e systems with a multivalued feedback nonlinearity is studied. A non zero feedthrough matrix is considered in the linear part. After some suitable transformations the system is proved to be, under certain conditions on the feedthrough matrix, well-posed using an extension of Kato's theorem. Another path to show the existence and uniqueness of solutions is based on maximal monotone operators, using a suitable state variable change. Stability properties related to dissipativity are studied and an extension of the Krasovskii-LaSalle invariance principle is proposed. Applications are in the study of electrical circuits with piecewise-linear electronic devices, and state observer design. A convergent time-stepping method with order 1 or $\frac{1}{2}$ depending on the data is easily derived from [5].

References

- [1] V. Acary, B. Brogliato, *Numerical Methods for Nonsmooth Dynamical Systems. Applications in Mechanics and Electronics*, Springer Verlag, LNACM 35, 2008.
- [2] K. Addi, B. Brogliato, D. Goeleven, A qualitative mathematical analysis of a class of linear variational inequalities via semi-complementarity problems: applications in electronics, *Mathematical Programming A*, in press, DOI 10.1007/s10107-009-0268-7.
- [3] K. Addi, S. Adly, B. Brogliato, D. Goeleven, A method using the approach of Moreau and Panagiotopoulos for the mathematical formulation of non-regular circuits in electronics, *Nonlinear Analysis: Hybrid Systems*, vol.1, no 1, pp.30-43, March 2007.
- [4] S. Adly, D. Goeleven, A stability theory for second-order nonsmooth dynamical systems with application to friction problems, *J. Math. Pures et Appliquées*, vol.83, no 1, pp.17-51, 2004.
- [5] J. Bastien, M. Schatzman, Numerical precision for differential inclusions with uniqueness, *Mathematical Modelling and Numerical Analysis (ESAIM:M2AN)*, vol.36, no 3, pp.427-460, 2002.
- [6] J. Bastien, C.H. Lamarque, Persoz's gephyroidal model described by a maximal monotone differential inclusion, *Archives Applied Mechanics*, vol.78, pp.393-407, 2008.
- [7] B. Brogliato, Absolute stability and the Lagrange-Dirichlet theorem with monotone multivalued mappings, *Systems and Control Letters*, vol.51, no 5, pp.343-353, 2004.
- [8] B. Brogliato, W.P.M.H. Heemels, Observer design for Lur'e systems with multivalued mappings: a passivity approach, *IEEE Transactions on Automatic Control*, vol.54, no 8, pp.1996-2001, August 2009.
- [9] B. Brogliato, W.P.M.H. Heemels, Design of observers and certainty equivalence controllers for differential inclusions: a passivity approach, INRIA research report RR-6916, 2009, <http://hal.inria.fr/inria-00380820/fr/>

-
- [10] B. Brogliato, D. Goeleven, The Krasovskii-LaSalle invariance principle for a class of unilateral dynamical systems, *Mathematics of Control, Signals and Systems*, vol.17, no 1, pp.57-76, February 2005.
- [11] B. Brogliato, A. Daniliidis, C. Lemaréchal, V. Acary, On the equivalence between complementarity systems and projected systems and differential inclusions, *Systems and Control Letters*, vol.55, no 1, pp.45-51, January 2006.
- [12] B. Brogliato, R. Lozano, B. Maschke, O. Egeland, *Dissipative Systems Analysis and Control. Theory and Applications*, Springer Verlag, 2nd edition, 2007.
- [13] B. Brogliato, L. Thibault, Existence and uniqueness of solutions for non-autonomous complementarity dynamical systems, submitted to the *Journal of Convex Analysis*.
- [14] J.C.A. de Bruin, A. Doris, N. van de Wouw, W.P.M.H. Heemels, H. Nijmeijer, Control of mechanical motion systems with non-collocation of actuation and friction: A Popov criterion approach for input-to-state stability and set-valued nonlinearities, *Automatica*, vol.45, no 2, pp.405-415, February 2009.
- [15] M.K. Camlibel, W.P.M.H. Heemels, A.J. van der Schaft, J.M. Schumacher, Switched networks and complementarity, *IEEE Transactions on Circuits and Systems I*, vol.50, no 8, pp.1036-1046, 2003.
- [16] M.K. Camlibel, W.P.M.H. Heemels, J.M. Schumacher, On linear passive complementarity systems, *European Journal of Control*, vol.8, no 3, pp.220-237, 2002.
- [17] M.K. Camlibel, W.P.M.H. Heemels, J.M. Schumacher, Consistency of a time-stepping method for a class of piecewise-linear networks, *IEEE Transactions on Circuits and Systems I*, vol.49, pp.349-357, 2002.
- [18] M.K. Camlibel, L. Iannelli, F. Vasca, Passivity and complementarity, submitted to *Mathematical Programming A*, 2009.
- [19] B. Cornet, Existence of slow solutions for a class of differential inclusions, *J. Math. Anal. Appl.*, vol.96, pp.130-147, 1983.
- [20] R. W. Cottle, J.-S. Pang, R. E. Stone, *The Linear Complementarity Problem*, Academic Press, 1992.
- [21] P. Dupuis, A. Nagurney, Dynamical systems and variational inequalities, *Ann. Operations Res.*, vol.44, n no 1-4, pp.9-42, 1993.
- [22] D. Goeleven, D. Motreanu, V.V. Motreanu, On the stability of stationary solutions of first order evolution variational inequalities, *Advances in Nonlinear Variational Inequalities*, vol.6, pp.1-30, 2003.
- [23] D. Goeleven, B. Brogliato, Stability and instability matrices for linear evolution variational inequalities, *IEEE Trans. Automatic Control*, vol.49, no 4, pp.521-534, April 2004.

-
- [24] W.P.M.H. Heemels, J.M. Schumacher, S. Weiland, Linear complementarity systems, *SIAM Journal on Applied Mathematics*, vol.60, no 4, pp.1234-1269, 2000.
 - [25] C.Henry, An existence theorem for a class of differential equations with multivalued right-hand side, *J. Math. Anal. Appl.*,vol.41, pp.179-186, 1973.
 - [26] L. Iannelli, F. Vasca, K. Camlibel, Complementarity and passivity for piecewise linear feedback systems, *Proc. 45th IEEE Conf. on Decision and Control*, San Diego, USA, pp.4212-4217, 13-15 December 2006.
 - [27] D.M.W. Leenaerts, W.M.G. van Bokhoven, *Piecewise Linear Modeling and Analysis*, New York, Kluwer, 1998.
 - [28] M.R. Liberzon, Essays on the absolute stability theory, *Automation and Remote Control*, vol.67, no 10, pp.1610-1644, October 2006.
 - [29] P.D. Panagiotopoulos, *Inequality Problems in Mechanics and Applications*, Birkhäuser, Boston, 1985
 - [30] R.T. Rockafellar, R.J.B. Wets, *Variational Analysis*, Springer, Grundlehren der Mathematischen Wissenschaften vol.317, 1998.
 - [31] A.J. van der Schaft, J.M. Schumacher, The complementary-slackness class of hybrid systems, *Mathematics of Control, Signals and Systems*, vol.9, no 3, pp.266-301, September 1996.



Centre de recherche INRIA Grenoble – Rhône-Alpes
655, avenue de l'Europe - 38334 Montbonnot Saint-Ismier (France)

Centre de recherche INRIA Bordeaux – Sud Ouest : Domaine Universitaire - 351, cours de la Libération - 33405 Talence Cedex
Centre de recherche INRIA Lille – Nord Europe : Parc Scientifique de la Haute Borne - 40, avenue Halley - 59650 Villeneuve d'Ascq
Centre de recherche INRIA Nancy – Grand Est : LORIA, Technopôle de Nancy-Brabois - Campus scientifique
615, rue du Jardin Botanique - BP 101 - 54602 Villers-lès-Nancy Cedex
Centre de recherche INRIA Paris – Rocquencourt : Domaine de Voluceau - Rocquencourt - BP 105 - 78153 Le Chesnay Cedex
Centre de recherche INRIA Rennes – Bretagne Atlantique : IRISA, Campus universitaire de Beaulieu - 35042 Rennes Cedex
Centre de recherche INRIA Saclay – Île-de-France : Parc Orsay Université - ZAC des Vignes : 4, rue Jacques Monod - 91893 Orsay Cedex
Centre de recherche INRIA Sophia Antipolis – Méditerranée : 2004, route des Lucioles - BP 93 - 06902 Sophia Antipolis Cedex

Éditeur
INRIA - Domaine de Voluceau - Rocquencourt, BP 105 - 78153 Le Chesnay Cedex (France)
<http://www.inria.fr>
ISSN 0249-6399