



HAL
open science

Wireless Broadcast with Network Coding in Mobile Ad-Hoc Networks: DRAGONCAST

Song Yean Cho, Cédric Adjih

► **To cite this version:**

Song Yean Cho, Cédric Adjih. Wireless Broadcast with Network Coding in Mobile Ad-Hoc Networks: DRAGONCAST. [Research Report] RR-6569, INRIA. 2008. inria-00292867

HAL Id: inria-00292867

<https://inria.hal.science/inria-00292867>

Submitted on 2 Jul 2008

HAL is a multi-disciplinary open access archive for the deposit and dissemination of scientific research documents, whether they are published or not. The documents may come from teaching and research institutions in France or abroad, or from public or private research centers.

L'archive ouverte pluridisciplinaire **HAL**, est destinée au dépôt et à la diffusion de documents scientifiques de niveau recherche, publiés ou non, émanant des établissements d'enseignement et de recherche français ou étrangers, des laboratoires publics ou privés.



INSTITUT NATIONAL DE RECHERCHE EN INFORMATIQUE ET EN AUTOMATIQUE

*Wireless Broadcast with Network Coding
in Mobile Ad-Hoc Networks: DRAGONCAST*

Song Yean Cho, Cédric Adjih

N° 6569

July 2008

Thème COM

*R*apport
de recherche

Wireless Broadcast with Network Coding in Mobile Ad-Hoc Networks: DRAGONCAST

Song Yean Cho, Cédric Adjih

Thème COM — Systèmes communicants
Équipe-Projet Hipercom

Rapport de recherche n° 6569 — July 2008 — 23 pages

Abstract: Network coding is a recently proposed method for transmitting data, which has been shown to have potential to improve wireless network performance. We study network coding for one specific case of multicast, broadcasting, from one source to all nodes of the network.

We use network coding as a loss tolerant, energy-efficient, method for broadcast. Our emphasis is on mobile networks. Our contribution is the proposal of DRAGONCAST, a protocol to perform network coding in such a dynamically evolving environment. It is based on three building blocks: a method to permit real-time decoding of network coding, a method to adjust the network coding transmission rates, and a method for ensuring the termination of the broadcast.

The performance and behavior of the method are explored experimentally by simulations; they illustrate the excellent performance of the protocol.

Key-words: wireless networks, network coding, broadcasting, multi-hop, min-cut, hypergraph, control

Diffusion dans les réseaux mobile ad-hoc avec le codage réseau: DRAGONCAST

Résumé : Le codage réseau est une méthode qui a été proposée récemment, et dont le potentiel pour améliorer les performances des réseaux sans fil a été démontré. Dans ce rapport, nous étudions le codage réseau pour un cas spécifique de communication multicast, la diffusion, d'une source à tous les noeuds du réseau.

Nous utilisons le codage réseau comme une méthode de diffusion qui est tolérante aux pertes de messages, et est aussi efficace en énergie. Notre contribution est la proposition de DRAGONCAST, un protocole utilisant le codage réseaux dans des environnements évoluant dynamiquement. Il est basé sur trois briques: une méthode qui permet le décodage en temps réel du codage réseau, une méthode pour ajuster les débits des retransmissions, et une méthode pour garantir la terminaison de la diffusion.

La performance et le comportement de la méthode sont explorés expérimentalement par des simulations: elles illustrent l'excellente performance du protocole.

Mots-clés : réseaux sans fil, codage de réseau, diffusion, multi-sauts, coupe minimale, hypergraphe, contrôle

Contents

1	Introduction	4
2	Practical Framework for Network Coding	5
2.1	Linear Coding and Random Linear Coding	5
2.2	Decoding, Vector Space, and Rank	5
2.3	Rate Selection	6
3	Theoretical Performance of Wireless Network Coding	6
4	Our Approach: DRAGONCAST	7
4.1	Framework for Broadcast with Network Coding	7
4.2	SEW: Encoding for Real-time Decoding	7
4.2.1	Overview of Real-time Decoding	7
4.2.2	SEW (Sliding Encoding Window)	9
4.3	DRAGON: Rate Selection	11
4.3.1	Static Heuristic IRON	11
4.3.2	Dynamic Heuristic DRAGON	11
4.4	Termination Protocol	13
4.5	Proof of convergence of DRAGONCAST	13
5	Evaluation Metrics for Experimental Results	16
5.1	Metric for Energy-efficiency	16
5.2	Energy-efficiency reference point for routing	16
5.3	Real-Time Decoding	17
6	Experimental Results	17
6.1	Real-Time Decoding: Effects of SEW	18
6.2	Efficiency and Read-Time Decoding	19
7	Conclusion	22

1 Introduction

The concept of *network coding*, where intermediate nodes mix information from different flows, was introduced by seminal work from Ahlswede, Cai, Li and Yeung [1]. Since then, a rich literature has flourished for both theoretical and practical aspects. In particular, several results have established network coding as an efficient method to broadcast data to the whole wireless networks (see Lun et al. [6] or Fragouli et al. [16] for instance), when efficiency consists in: minimizing the total number of packet transmissions for broadcasting from the source to all nodes of the network.

From an information-theoretic point of view, the case of broadcast with a single source in a static network is well understood, see for instance Deb. et al [22] or Lun et al. [3] and their references. In practical networks, the simple method *random linear coding* from Ho et al. [2] may be used but several features should be added. Examples of practical protocols for multicast, are CodeCast from Park et al. [23] or MORE of Chachulski et al. [8]. Three practical features that this article addresses are: real-time decoding, termination, and retransmission rate.

- Real-time decoding: one desirable feature is the ability to decode without waiting for the whole set of (coded) packets from the source beforehand: this has been previously achieved by slicing the source stream in successive sequences of packets, called generations, and by exclusively coding packets of the same generation together (as in Chou et al. [7], Codecast [23], and MORE [8]). Then decoding is performed generation per generation.

- Termination: a second related feature is the ability to be able to get and decode all packets, at the end of the transmission or generation, even in cases with mobility and packet losses. A specific protocol may be added: a termination protocol.

- Retransmission (rate): this is related to functioning of random linear coding. Every node receives packets, and from time to time, will retransmit coded packets. As indicated in section 3, the optimal retransmission fixed rates may be computed for static networks ; however in a mobile networks changes of topology would cause optimal rates to evolve continuously¹. Hence a network coding solution should incorporate an algorithm to determine when to retransmit packets and how many of them, such as the ones in Fragouli et al. [16], or MORE [8].

In this article, we propose a protocol for broadcast in wireless networks: DRAGONCAST. It provides the three previous features in a novel way and is based on simplicity and universality. Unlike previous approaches, it does not use explicitly or implicit knowledge relative to the topology (such as the direction or distance to the source, the loss rate of the links, . . .), hence is perfectly suited to ad-hoc networks with high mobility.

It uses piggybacking of node state information on coded packets. One cornerstone of DRAGONCAST is the real-time decoding method, SEW (Sliding Encoding Window): it does not use the concept of generation; instead, the knowledge of the state of neighbors is used to constrain the content of generated coded packets. The other cornerstone of DRAGONCAST is a rate adjustment method: every node is retransmitting coded packets with a certain rate;

¹also when loss probabilities evolve in a unknown manner

this rate is adjusted dynamically. Essentially, the rate of the node increases if it detects some nodes that lack too many coded packets in the current neighborhood. This is called a “dimension gap”, and the adaptation algorithm is a Dynamic Rate Adjustment from Gap with Other Nodes (DRAGON). Finally, a termination protocol is integrated.

The rest of the paper is organized as follows: section 2 provides some background about network coding in practical aspects, section 3 presents some in theoretical aspects, section 4 details our approach and protocols, section 5 explains evaluation metrics, section 6 analyzes performance from experimental results and section 7 concludes.

2 Practical Framework for Network Coding

In this section, we present the known practical framework for network coding (see also Fragouli et al. [17] for tutorial) that is used in this article.

2.1 Linear Coding and Random Linear Coding

Network coding differs from classical routing by permitting coding at intermediate nodes. One possible coding algorithm is linear coding that performs only linear transformations through addition and multiplication (see Li et al. [13] and Koetter et al. [15]). Precisely, linear coding assumes identically sized packets and views the packets as vectors on a fixed Galois field \mathbb{F}_q^n . In the case of single source multicasting, all packets initially originate from the source, and therefore any coded packet received at a node v at any point of time is a linear combination of some source packets as:

$$i^{th} \text{ received coded packet at node } v : y_i^{(v)} = \sum_{j=1}^{j=k} a_{i,j} P_j$$

where the $(P_j)_{j=1,\dots,k}$ are k packets generated from the source. The sequence of coefficients for a coded packet $y_i^{(v)}$ (denoted “information vector”) is $[a_{i,1}, a_{i,2}, \dots, a_{i,n}]$ (denoted “global encoding vector”).

When a node generates a coded packet with linear coding, an issue is how to select coefficients. Whereas centralized deterministic methods exist, Ho and al. [2] presented a novel coding algorithm, which does not require any central coordination. The coding algorithm is *random linear coding*: when a node transmits a packet, it computes a linear combination of all data possess with randomly selected coefficients (γ_i), and sends the result of the linear combination: $\text{coded_packet} = \sum_i \gamma_i p_i^{(v)}$. In practice, a special header containing the coding vector of the transmitted packet may be added as proposed by Chou et al. [7].

2.2 Decoding, Vector Space, and Rank

A node will recover the source packets $\{P_j\}$ from the received packets $\{p_i^{(v)}\}$, considering the matrix of coefficients $\{a_{i,j}\}$ in section 2.1. Decoding amounts to inverting this matrix, for instance with Gaussian elimination.

Thinking in terms of coding vectors, at any point of time, it is possible to associate with one node v , the *vector space*, Π_v spawned by the coding vectors,

and which is identified with the matrix. The dimension of that vector space, denoted D_v , $D_v \triangleq \dim \Pi_v$, is also the *rank* of the matrix. In the rest of this article, by abuse of language, we will call *rank of a node*, that rank and dimension. The rank of a node is a direct metric for the amount of useful received packets, and a received packet is called *innovative* when it increases the rank of the receiving node. Ultimately a node can decode all source packets when its rank is equal to the total number of source packets (*generation size*). See also [16, 7]. When a node will recover the source packets at once only at the end of network coding transmission, the decoding process is called as “*block decoding*”.

2.3 Rate Selection

When using random linear coding, the rate of each node should be decided. For static networks, the optimal rates with respect to either energy-efficiency, or capacity maximization may be computed as in the references in section 3.

For dynamic networks, the rate may evolve with time, and in our framework we assume a “rate selection algorithm”: at every point of time, the algorithm is deciding the rate of the node. We denote \mathcal{V} the set of nodes, and $C_v(\tau)$ the rate of the node $v \in \mathcal{V}$ at time τ . Then, random linear coding operates as indicated on algorithm 1.

Algorithm 1: Random Linear Coding with Rate Selection

- 1.1 **Source scheduling:** the source transmits sequentially D vectors (packets) with rate C_s .
 - 1.2 **Nodes’ start and stop conditions:** The nodes start transmitting when they receive the first vector but they continue transmitting until themselves **and their current neighbors** have enough vectors to recover the D source packets.
 - 1.3 **Nodes’ scheduling:** every node v retransmits linear combinations of the vectors it has, and waits for a delay computed from the rate distribution.
-

With this scheduling of Algorithm 1, the changing parameter is the delay, and we choose to compute it as an approximation from the rate $C_v(t)$ as: delay $\approx 1/C_v(t)$.

3 Theoretical Performance of Wireless Network Coding

For static networks, several important results exist for network coding in the case of single source multicast.

First, it has been shown that the simple method of *random linear coding* from Ho et al. [2] could asymptotically achieve maximal multicast capacity (optimal performance), and also optimal energy-efficiency (see [6]). Second, for energy-efficiency, only the average rates of the nodes are relevant. Third, the optimal average rates may be found in polynomial time with linear programs as with

Wu et al. [5] Li et al. [4], Lun et al. [6]². Last, performing random linear coding, with a source rate slightly lower than the maximal one, will allow to decode all packets in the long run (when time grows indefinitely, see [19,3]).

For mobile ad-hoc networks, if one desires to use the optimal rates at any point of time, an issue is that they are a function of the topology, which should then also be perfectly known.

4 Our Approach: DRAGONCAST

As mentioned in section 1, our contribution is a method for broadcast from a single source to the entire network with network coding.

It is based on known principles described in section 2.3; and the general framework of our protocol is described in section 4.1. There are three components in this framework:

- SEW, a coding method to allow real-time decoding of the packets, described in section 4.2.
- DRAGON, a rate selection algorithm, proposed in [9] (extended version in [10]) and summarized in section 4.3
- A termination protocol described in section 4.4.

4.1 Framework for Broadcast with Network Coding

In this section, we briefly describe our practical framework for broadcast protocols. It assumes the use of random linear coding. It further details the basic operation presented on algorithm 1, and appears in algorithm 2.

As described in algorithm 2, the source initiates broadcasting by sending its first original data packets. Other nodes initiate transmission of encoded data upon receiving the first coded packet, and stay in a transmission state where they will transmit packets with an interval decided by the rate selection algorithm. Upon detection of termination, they will stop transmitting.

4.2 SEW: Encoding for Real-time Decoding

In this section, we propose a method for real-time decoding, which allows recovery of some source packets without requiring to decode all source packets at once. This section is organized as follows: we first explain the decoding process and the concept of real-time decoding in section 4.2.1, then introduce our method for real-time decoding itself in section 4.2.2.

4.2.1 Overview of Real-time Decoding

In this section, we explain the general decoding process. Decoding is a process to recover the source packets from accumulated coded packets inside a node.

²“optimal”, again, in the sense of energy-efficiency, and assuming transmissions without interferences – with our linear cost model, energy-efficiency is invariant by a scaling of the rates, hence we are assuming that the rates are scaled to be well below channel capacity. Therefore, the capacity limits of the wireless medium and the impact of interferences or of the scheduling, are a peripheral issue for this particular problem of energy-efficiency, which is entirely different from the issue of maximum capacity, and from practical issues when the source has an immutable rate

Algorithm 2: Framework for Broadcast with Network Coding

- 2.1 **Source data transmission scheduling:** the source transmits sequentially D vectors (packets) with rate C_s .
 - 2.2 **Nodes' data transmission start condition:** the nodes start transmitting a vector when they receive the first vector.
 - 2.3 **Nodes' data storing condition:** the nodes store a received vector in their local buffer only if the received vector has new and different information from the vectors that the nodes already have.
 - 2.4 **Nodes' termination conditions:** the nodes continue transmitting until themselves **and their current known neighbors in their local information base** have enough vectors to recover the D source packets.
 - 2.5 **Nodes' data transmission scheduling:** every node retransmits linear combinations of the vectors in its local buffer after waiting for a delay computed from the rate selection.
 - 2.6 **Nodes' data transmission restart condition:** When one node receives a notification indicating that one neighboring node requires more vectors to recover the D source packets and it has already stopped data transmission, the node re-enters in a transmission state.
-

As explained in section 2.1, any received coded packets are originated from the source, and are a set of linear combinations of the original source packets as represented in Fig. 1(a). In Fig. 1(a), $(P_j)_{j=1,\dots,k}$ are k packets generated from the source, and the set $\{y_i^{(v)}\}$ is the set of packets that were received by a node v . The sequence of coefficients for $y_i^{(v)}$, $[g_{i,1}, g_{i,2}, \dots, g_{i,k}]$ is the *global encoding vector* of coded packet ($y_i^{(v)}$).

Considering the matrix of coefficients $[g_{i,j}]$ of a set of coded packets inside a node, a node can recover the source packets $[P_j]$ from the accumulated packets $[p_i^{(v)}]$ if the matrix of coefficients has full rank. Then, decoding amounts to inverting this matrix, for instance with Gaussian elimination as seen in Figure 1(b).

$$\begin{array}{c}
 \left| \begin{array}{c} y_1^v \\ y_1^v \\ \dots \\ y_n^v \end{array} \right| \\
 \mathbf{Y}
 \end{array}
 =
 \begin{array}{c}
 \left| \begin{array}{ccc} g_{1,1} & g_{1,2} & \dots & g_{1,k} \\ g_{2,1} & g_{2,2} & \dots & g_{2,k} \\ \dots & \dots & \dots & \dots \\ g_{n,1} & g_{n,2} & \dots & g_{n,k} \end{array} \right| \\
 \mathbf{G}
 \end{array}
 \begin{array}{c}
 \left| \begin{array}{c} p_1 \\ p_2 \\ \dots \\ p_n \end{array} \right| \\
 \mathbf{P}
 \end{array}
 \qquad
 \begin{array}{c}
 \mathbf{G}^{-1}
 \left| \begin{array}{c} y_1^v \\ y_1^v \\ \dots \\ y_n^v \end{array} \right|
 =
 \left| \begin{array}{cccc} 1 & 0 & 0 & \dots & 0 \\ 0 & 1 & 0 & \dots & 0 \\ \dots & \dots & \dots & \dots & \dots \\ 0 & 0 & 0 & \dots & 1 \end{array} \right|
 \left| \begin{array}{c} p_1 \\ p_2 \\ \dots \\ p_n \end{array} \right| \\
 \mathbf{G}^{-1} \times \mathbf{Y} = \mathbf{I} \times \mathbf{P}
 \end{array}$$

(a) A set of coded packets in a local buffer of a node

(b) Decoding with Gaussian Elimination with $k=n$

Figure 1: Decoding at a Node

In the worst case, a node may have to wait until it has sufficient information to decode all packets at once (block decoding). Because block decoding delays recovery of source packets until the rank of a node reaches at least the generation

size, the delay could be rather large. In order to shorten the delay of the block decoding, Chou et al. [7] suggested that an early decoding process could be possible by recovering some source packets before a node receives enough data for block decoding, but did not specify a method to ensure it. The early decoding process uses the fact that partial decoding is possible [7] if a subset of encoding vectors could be combined by Gaussian elimination, yielding a lower triangular part of the matrix as seen in Fig. 2. Notice that packets forming the lower triangular part do not need to be on sequential rows inside the nodes' buffers and rows of the packet could be non-continuous in a matrix of the global encoding vectors and information vectors.

$$\begin{array}{c}
 \left| \begin{array}{c} y_1^v \\ y_2^v \\ y_3^v \\ \dots \\ y_{n-1}^v \\ y_n^v \end{array} \right| = \left| \begin{array}{cccc} 1 & 0 & 0 & \dots & 0 \\ 0 & 1 & 0 & \dots & 0 \\ 0 & 0 & 1 & \dots & 0 \\ \dots & \dots & \dots & \dots & \dots \\ g_{n-1,1} & g_{n-1,2} & \dots & g_{n-1,k} & \\ g_{n,1} & g_{n,2} & \dots & g_{n,k} & \end{array} \right| \left| \begin{array}{c} p_1 \\ p_2 \\ p_3 \\ \dots \\ p_n \\ p_n \end{array} \right| \\
 \mathbf{Y} = \mathbf{G} \times \mathbf{P} \\
 \triangle \quad \text{Early Decodable Part}
 \end{array}$$

Figure 2: Low Triangle in Global Encoding Vectors in Local Buffer

An explicit mechanism to permit for early decoding is useful, since when the source rate approaches its “maximum broadcast rate”, in other terms as the source rate approaches optimality, the probability of being able to partially decode after a fixed time decreases (as implied by [19]).

4.2.2 SEW (Sliding Encoding Window)

In this section, we introduce our real-time decoding method, Sliding Encoding Window (SEW). In order to enable real-time decoding, it ensures the existence of a low triangle in global encoding vectors saved in a node. Hence the existence of an early decodable part as in Fig. 2.

Our approach is deliberately simpler than most coding schemes, including for instance LT codes [12], Growth Codes [11] or opportunistic coding approaches such as MORE [8]. Our rationale starts from the observation that according to [3] for instance, random linear coding is asymptotically capacity-achieving ; in other words, in theory, a sophisticated coding scheme is not necessary (ignoring the header overhead). Our intuition, is that adding simple constraints (the ones in SEW) to random linear coding, we will still be able to be able to perform near to the performance of random linear coding (which is asymptotically optimal). Compared to other approaches, SEW has the added benefit of making few assumptions on the communication characteristics (loss probabil-

ity, stationarity, average number of neighbors, direction of the source or of the destinations, ...).

The key of SEW, is to ensure the existence of an early decoding part, and to do so, the method SEW relies on two properties:

Principles of SEW:

- SEW coding rule: generates only coded packets that are linear combinations of the first L source packets, where L is a quantity that increases with time.
- SEW decoding rule: when decoding, performs a Gaussian elimination, in such a way that one coded packet is only used to eliminate the source packet with the highest possible index (i.e. the latest source packet).

Before detailing the insights behind these rules, we first define notations: the high index of a node, I_{high} , and the low index of a node, I_{low} . As explained in section 4.2.1, a coded packet is a linear combination of source packets. If we assume that the most recently generated source packet has always the highest *sequence number*, that is if the source is successively sending packets P_1, P_2, P_3, \dots with sequence numbers 1, 2, 3, ..., then it is meaningful to identify the highest and lowest such sequence number in the global encoding vector of any coded packet. Let us refer to the highest and lowest sequence numbers as: highest and lowest index of the coded packet respectively. For instance, a packet $y = P_3 + P_5 + P_7 + P_8$, the highest index is 8 and the lowest index is 3.

Because all encoded packets have their own highest index and lowest index, we can also compute the maximum of the highest index of all not-yet decoded packets in a node, as well as the minimum of the lowest index. We refer to the maximum and the minimum as high index (I_{high}) of a node and low index (I_{low}) of a node. Notice that a node will generally have decoded the source packets from 1 up to its low index.

The intent of the SEW coding rule is to use knowledge about the state of neighbors of one node, namely their high and low index. A node restricts the generated packets to a subset of the packets of the source, until it is confirmed that perceived neighbors of the node are able to decode nearly all of them, up to a margin K . Notice that once all its neighbors may decode up to the first $L - K$ packets, it is unnecessary for the node to include packets P_1, \dots, P_L in its generated combinations.

Hence, the general idea of SEW is that it restricts the mixed original packets within an encoded packet from a window of a fixed size K . In other words, a node encodes only source packets inside a fixed Encoding Window as:

$$i^{\text{th}} \text{ coded packet at node } v : p_i^{(v)} = \sum_{j=k}^{j=k+K} a_{i,j} P_j$$

where the $(P_j)_{j=k, \dots, k+K}$ are K packets generated from the source. The sequence of coefficients for $p_i^{(v)}$ is the following global encoding vector: $[0, 0, \dots, a_{i,k}, a_{i,k+1}, \dots, a_{i,k+K}, \dots, 0, 0]$. A node will repeat transmissions of new random combinations within the same window, until its neighbors have progressed in the decoding process.

The intent of the SEW decoding rule, is to guarantee proper functioning of the Gaussian elimination. An example of SEW decoding rule is the following: assume that node v has received packets y_1 and y_2 , for instance $y_1 = P_1 + P_9$ and

$y_2 = P_1 + P_2 + P_3$. Then y_1 would be used to eliminate P_9 for newly incoming packets (the highest possible index is 9), and y_2 would be used to eliminate P_3 from further incoming packets. On the contrary, if the SEW decoding rule was not applied and if y_1 were used to eliminate P_1 , then it would be used to eliminate it in y_2 , and would result into the computation of $y_2 - y_1 = P_2 + P_3 - P_9$; this quantity now requires elimination of P_9 , an higher index than the initial one in y_2 . In contrast the SEW decoding rule guarantees the following invariant: during the Gaussian elimination process, the highest index of every currently non-decoded packet will always stay identical or decrease.

Provided that neighbor state is properly exchanged and known, as a result, the combination of the SEW coding rule and the SEW decoding rule, guarantee that ultimately every node will be able to decode the packets in the window starting from its lowest index; that is, they guarantee early decoding.

Notice that improper knowledge of neighbor state might impact the performance of the method but not its correctness: if a previously unknown neighbor is detected (for instance due to mobility), the receiving node will properly adjust its sending window. Conversely, in DRAGONCAST, obsolete neighbor information, for instance about disappeared neighbors, will ultimately expire.

4.3 DRAGON: Rate Selection

In this section, we describe rate selection algorithms which complement the real-time decoding method SEW, in the framework we previously proposed.

Precisely, we introduce our core heuristic for rate selection, DRAGON. Before that, we describe a simplified rate selection, IRON, which is used later in simulations for reference, and that would approach the algebraic gossip method of Deb et al. [15] in networks with high mobility.

These heuristics do not assume a specific type of network topology; the only assumption is that one transmission reaches several neighbors at the same time.

4.3.1 Static Heuristic IRON

The reference heuristic, IRON, starts from the simple logic of setting the same rate on every node: for instance let us assume that the every node has an identical rate as one, e.g. a packet per a second.

Now we further optimistically assume that near-optimal energy-efficiency is achieved and that every transmission would bring *innovative* information to almost every receiver, and we denote M the average number of neighbors of a node in the mobile network.

Then every node will receive on average M packets a second. Hence the source should inject at least M packets per a second. This constitutes the heuristic IRON:

- IRON (Identical Rate for Other Nodes than source): every node retransmits with the same rate, except from the source which has a rate M times higher.

4.3.2 Dynamic Heuristic DRAGON

The heuristic DRAGON has been proposed and analyzed in [9] and [10]. We briefly summarize it in this section for completeness.

The starting point of our heuristic DRAGON, is that the observation that, for real-time decoding, the rank of nodes inside the network should be close to the index of the last source packet, and that in any case, they should at least evolve in parallel.

Thus, one would expect the rank of a node to grow at the same pace as the source transmission, as in the example of optimal rate selections for static networks (see section 3). Decreasing the rates of intermediate nodes by a too large factor, would not permit the proper propagation of source packets in real time. On the contrary, increasing excessively their rates, would not increase the rate of the decoded packets (naturally bounded by the source rate) while it would decrease energy-efficiency (by increasing the amount of redundant transmissions).

The idea of the proposed rate selection is to find a balance between these two inefficient states. As we have seen, ideally the rank of a node would be comparable to the lastly sent source packet. Since we wish to have a simple decentralized algorithm, instead of comparing with the source, we compare indirectly the rank of a node with the rank of all its perceived neighbors.

The key idea is to perform a control so that the rank of neighbor nodes would tend to be equalized: if a node detects that one neighbor had a rank which is too low in comparison with its own, it would tend to increase its rate. Conversely, if all its neighbors have greater ranks than itself, the node need not to send packets in fact.

Precisely, let $D_v(\tau)$ denote the rank of a node v at time τ , and let $g_v(\tau)$ denote the maximum gap of rank with its neighbors, normalized by the number of neighbors, that is:

$$g_v(\tau) \triangleq \max_{u \in H_u} \frac{D_v(\tau) - D_u(\tau)}{|H_u|}$$

We propose the following rate selection, DRAGON, *Dynamic Rate Adaptation from Gap with Other Nodes*, which adjusts the rates dynamically, based on that gap of rank between one node and its neighbors as follows:

- DRAGON: the rate of node v is set to $C_v(\tau)$ at time τ as:
 - if $g_v(\tau) > 0$ then: $C_v(\tau) = \alpha g_v(\tau)$
where α is some constant
 - Otherwise, the node stops sending encoded packets until $g_v(\tau)$ becomes larger than 0

Consider the total rate of the transmissions that one node would receives from its neighbors: the *local received rate*. In a static network with the previous rate selection: DRAGON ensures that every node will receive a total rate at least equal to the average gap of one node and its neighbors scaled by α . That is, the local received rate, at time τ verifies:

$$\text{Local Received Rate} \geq \alpha \left(\frac{1}{|H_v|} \sum_{u \in H_v} D_u(\tau) - D_v(\tau) \right)$$

This would ensure that the gap with the neighbors would be closed in time $\approx \leq \frac{1}{\alpha}$ if the neighbors did not receive new innovative packets. Notice that this is independent from the size of the gap: the greater the gap, the higher the rate. Overall, the time for closing the gap would be identical. This is only an informal argument to describe the mechanisms of DRAGON; however

experimental results in section 6, illustrate the proper behavior of the algorithm, and its synergy with SEW.

4.4 Termination Protocol

A network coding protocol for broadcast requires a termination protocol in order to decide when retransmissions of coded packets should stop.

Our precise terminating condition is as follows: when a node (a source or an intermediate node) itself and all its known neighbors have sufficient data to recover all source packets, the transmission stops. This stop condition requires information about the status of neighbors including their ranks. Hence, each node manages a local information base to store one hop neighbor information, including their ranks.

Algorithm 3: Brief Description of Local Information Base Management Algorithm

- 3.1 **Nodes' local info notify scheduling:** The nodes start notifying their neighbors of their current rank and their lifetime when they start transmitting vectors. The notification can generally be piggybacked in data packets if the nodes transmit a vector within the lifetime interval.
 - 3.2 **Nodes' local info update scheduling:** On receiving notification of rank and lifetime, the receivers create or update their local information base by storing the sender's rank and lifetime. If the lifetime of the node information in the local information base expires, the information is removed.
-

In order to keep up-to-date information about neighbors, every entry in the local information base has lifetime. If a node does not receive notification for update until the lifetime of an entry is expired, the entry is removed. Hence, every node needs to provide an update to its neighbors. In order to provide the update, each node notifies its current rank with new lifetime. The notification is usually piggybacked in an encoded data packet, but could be delivered in a control packet if a node does not have data to send during its lifetime. A precise algorithm to organize the local information base is described in algorithm 3

The notification of rank has two functions: it acts both as a positive acknowledgement (ACK) and as a negative acknowledgement (NACK). When a node has sufficient data to recover all source packets, the notification works as ACK, and when a node needs more data to recover all source packets, the notification has the function of an NACK. In this last case, a receiver of the NACK could have already stopped transmission, and thus detects and acquires a new neighbor that needs more data to recover all source packets. In this case, the receiver restarts transmission. The restarted transmission continues until the new neighbor notifies that it has enough data, or until the entry of the new neighbor is expired and therefore removed.

4.5 Proof of convergence of DRAGONCAST

In this section, we prove that when the source has a finite number of packets, and when the network is connected, the algorithm SEW will always ensure that

every node may decode the packets (in association with the rest of the protocol DRAGONCAST). Note that we do not address performance issues.

Our first step towards the proof is a formal definition of the assumption “network connected”:

Connectivity Definition:

If a network is *connected*, then for any pair of nodes u et v , one may find a sequence of nodes $(u_0 = u, u_1, u_2, \dots, u_{k-1}, u_k = v)$, with the following properties (for any $i = 0, \dots, k - 1$)

- u_i may send packets to u_{i+1} with a rate greater or equal to than some constant C and with average loss probability lower or equal to some constant $p_{\max\text{-loss}}$
- and u_{i+1} may send packets to u_i with the same properties

This definition is more complex than a graph-theory definition, because it may be applied to mobile networks (even delay-tolerant networks), networks with limited capacity, or with lossy transmissions,

Our second important step, is to remark one property of DRAGON, described in section 4.3.2:

Neighbor Transmission Assumption:

If a node detects that one neighbor node has a lower rank, it will send coded packets with a rate greater than some minimal rate (actually at least some constant α , see section 4.3.2)

The third step is to note that the following property can be ensured in DRAGONCAST, in the termination protocol (see section 4.4)

Advertisement Assumption:

Every node, that cannot yet decode, will advertise once its state at least with a rate greater than some constant $C_{\min\text{-adv}}$

A technical detail is the expiration time for keeping neighbor state information: in the remaining we simply will assume that it is sufficiently large.

With the previous assumptions, we can now prove the following result:

Theorem 1. *Ultimately, every node will be able to decode (almost always, in the probabilistic sense).*

Proof: Note that for clarity, the proof that follows is written informally, but a more formal version could be derived, as every detail is addressed.

Consider a source with a finite number of packets.

We will do a proof by contradiction. Assume that DRAGONCAST is run for an arbitrary large time on the network. Consider the point in time, where nodes receive no new innovative packets. Because the number of source packets is finite³, such a time always exists.

Imagine that at that point of time, there exists at least one node that would not be able to decode in the network, and among such nodes, take the node

³and this number of source packet bounds the rank of one node, which is always increased when receiving an innovative packet

with the smallest low index I_{low} denoted I_{lowest} . The node associated with this index is denoted v_{lowest} .

Consider the source s : by the connectivity definition, there exists a path from the source to this node ($u_0 = s, \dots, u_k = v_{\text{lowest}}$) satisfying the condition in the connectivity definition.

Along this path, we will consider u_i , the node with the minimum i , such that its low index is I_{lowest} (i.e. along this path, the closest node to the source with low index I_{lowest})

As long as the node u_i cannot decode, as the advertisement assumption indicates, the node will retransmit its state (piggybacked or not) at a guaranteed minimal rate. With the assumptions of the connectivity definition such messages might actually be sent only with a lower rate (C might be lower than $C_{\text{min-adv}}$), and will be received with probability greater than $1 - p_{\text{max-loss}}$. The global result is that as time τ converge to infinity, the probability that the node u_{i-1} receives the state message from u_i increases exponentially as $1 - e^{-\beta\tau}$ for some constant $\beta > 0$. By a large selecting τ properly, we have have an arbitrarily low probability p_ϵ that a state message from any node is not received by its neighbor after a time τ .

Once the state message from u_i is received by u_{i-1} , by using the neighbor transmission assumption, we know that u_{i-1} will retransmit packets at least with a certain frequency, and using the same reasoning as previously, after a time τ' , u_{i-1} will receive such a packet, with a probability greater than $1 - p_\epsilon$.

The outcome is that as long as u_i cannot decode, it will receive a coded packet from u_{i-1} with probability greater than $(1 - p_\epsilon)^2$ after a time $\tau + \tau'$

Now consider the content of the packet: it is a set of coded packets. Since the low index I_{lowest} must be lower than the low index of u_{i-1} , the node u_{i-1} may at least send the I_{lowest} -th packet from the source as uncoded packet, or in general a linear combination of some of the sources packets with indices between I_{lowest} and $I_{\text{lowest}} + K$.

In fact, as long as u_i cannot decode the I_{lowest} -th packet from the source, u_{i-1} will send such coded packets with probability $(1 - p_\epsilon)^2$, in every $\tau + \tau'$ time intervals.

Denote Q_0 the I_{lowest} -th packet from the source, and Q_1 to Q_m the other packets in the buffer of u_{i-1} with indices between I_{lowest} and $I_{\text{lowest}} + K$. The point being that u_{i-1} must have decoded Q_0 , but not necessarily the other Q_1, \dots, Q_m that are linear combination of source packets.

In any case, the key is that we have transmissions of linear combinations of Q_0, Q_1, \dots, Q_m by u_{i-1} to u_i , with a lower-bounded rate. We can use the classical random linear coding results, to deduce that the probability of not being to decode the (Q_i) after several transmissions decreases exponentially (or faster than that) with the number received linear combinations. Hence ultimately, the node u_i will be able to decode the packets Q_i , including specifically Q_0 , which is a new source packet for it. This contradicts the hypothesis that no new innovative packets is received.

Hence this proves the fact that ultimately nodes can always decode (almost always, since we depend on events with probability 1).

5 Evaluation Metrics for Experimental Results

To evaluate the performance of our broadcasting protocol DRAGONCAST, we are interested in two aspects: first, the energy-efficiency of the method, and second, a quantitative assessment of the ability to perform real-time decoding with SEW.

To do so, we provide two metrics, one for each aspect: to evaluate efficiency, we measure a quantity denoted $E_{\text{ref-eff}}$ and whereas to evaluate real-time decoding, we measure a quantity denoted RDT ; they are defined as follows:

- $E_{\text{ref-eff}} = \frac{E_{\text{bound}}}{E_{\text{cost}}}$: the ratio between E_{cost} and E_{bound} , where E_{cost} is a total number of transmissions to broadcast one data packet to the entire network and E_{bound} is one lower bound of the possible value of E_{cost} .
- RDT : the average real-time decoding rate per unit time; the ratio between the number of decoded packet of a node and the rank of the node.

They are further described in the following sections.

5.1 Metric for Energy-efficiency

The metric for efficiency, $E_{\text{ref-eff}}$ is always smaller than 1 and may approach 1 only when the protocol becomes close to optimality (the opposite is false).

As indicated previously, E_{cost} , the quantity appearing in the expression of $E_{\text{ref-eff}}$ is the average number of packet transmissions per one broadcast of a source packet. We compute directly E_{cost} as

$$E_{\text{cost}} \triangleq \frac{\text{Total number of transmitted packets}}{\text{Number of source packets}}$$

The numerator of $E_{\text{ref-eff}}$, E_{bound} is a lower bound of the number of transmissions to broadcast one unit data to all N nodes, and we compute it as $\frac{N}{M_{\text{avg-max}}}$ where $M_{\text{avg-max}}$ is an average of the maximum number of neighbors. The value of E_{bound} comes from assumption that a node has $M_{\text{avg-max}}$ neighbors at most and one transmission can provide new and useful information to M_{max} nodes at most. Notice the maximum number of neighbors (M_{max}) evolves in a mobile network, and hence we compute the average of M_{max} as $M_{\text{avg-max}}$ for the whole broadcast session after measuring M_{max} at periodic intervals.

5.2 Energy-efficiency reference point for routing

In our simulations, the performance of DRAGONCAST was not compared to the performance of methods using routing. Indeed, many routing methods (such as connected dominating sets), would suffer from changes of topology due to the mobility, and would need to be specially tuned or adaptable.

In order to still obtain a reference point for routing, we are using the upper bound of efficiency without coding

($E_{\text{bound-ref-eff}}$) of Fragouli et al. [16]. Their argument works as follows: consider the broadcasting of one packet to an entire network and consider one node in the network which retransmits the packet. To further propagate the packet to network, another connected neighbor must receive the forwarded packet and retransmit it, as seen in Fig. 3. Considering the inefficiency due to the fact that

any node inside the shared area receives duplicated packets, an geometric upper bound of for routing can be deduced:

$$E_{\text{rel-cost}}^{(\text{no-coding})} \geq \frac{6\pi}{2\pi + 3\sqrt{3}}$$

. Notice that $\frac{6\pi}{2\pi+3\sqrt{3}} \approx 1.6420\dots > 1$

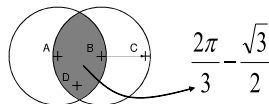


Figure 3: $E_{\text{bound-ref-eff}}$ without coding

5.3 Real-Time Decoding

For a real-time decoding metric, we measure an average real-time decoding rate (*RTD*). We compute it as a ratio between the number of decoded packets inside a node and the number of received useful (innovative) packets of the node per unit time. As explained in section 2, the number of these useful packets is the rank of a node. Thus we compute *RTD* of all nodes precisely as

$$RTD \triangleq \frac{\text{Total number of decoded packets at a node}}{\text{Rank of the node}}$$

(and perform averages).

6 Experimental Results

In order to evaluate the protocol DRAGONCAST, we performed several sets of simulations using the NS-2 simulator. The simulation parameters are given in Table 1.

Parameter	Value(s)
Number of nodes	200
transmission range	250m
network field size	1100m x 1100m
antenna	omni-antenna
propagation model	two way ground
MAC	802.11
Data Packet Size	512 including headers
Generation size	1000
Field \mathbb{F}_p , (xor)	$p = 2$

Table 1: simulation parameters of NS-2

Simulations were made with different scenarios and for the metrics described in section 5. First we assess the quality of a real-time decoding rate with our method SEW in section 6.1. Because real-time decoding sacrifices some energy-efficiency, we analyzed the impact of the introduction SEW on efficiency, and then the whole protocol DRAGONCAST in section 6.2.

6.1 Real-Time Decoding: Effects of SEW

In order to evaluate the effects of our real-time decoding method SEW, simulations were run with parameters in Table 1 and the following additional parameters: SEW window size $K = 100$, high mobility (2.7 radio range/sec), and a source rate $M = 8.867$.

We used both rate selection heuristics IRON and DRAGON, and drew the evolution of the following parameters with time:

- the average rank of nodes,
- average I_{high}
- minimum I_{high} ,
- source rank
- average RTD

The results are represented on Fig. 4(a) with rate selection IRON, whereas Fig. 4(c) shows results using DRAGON, and Fig. 4(b) shows results using IRON and SEW. The results for DRAGONCAST (DRAGON + SEW) are given in the next section.

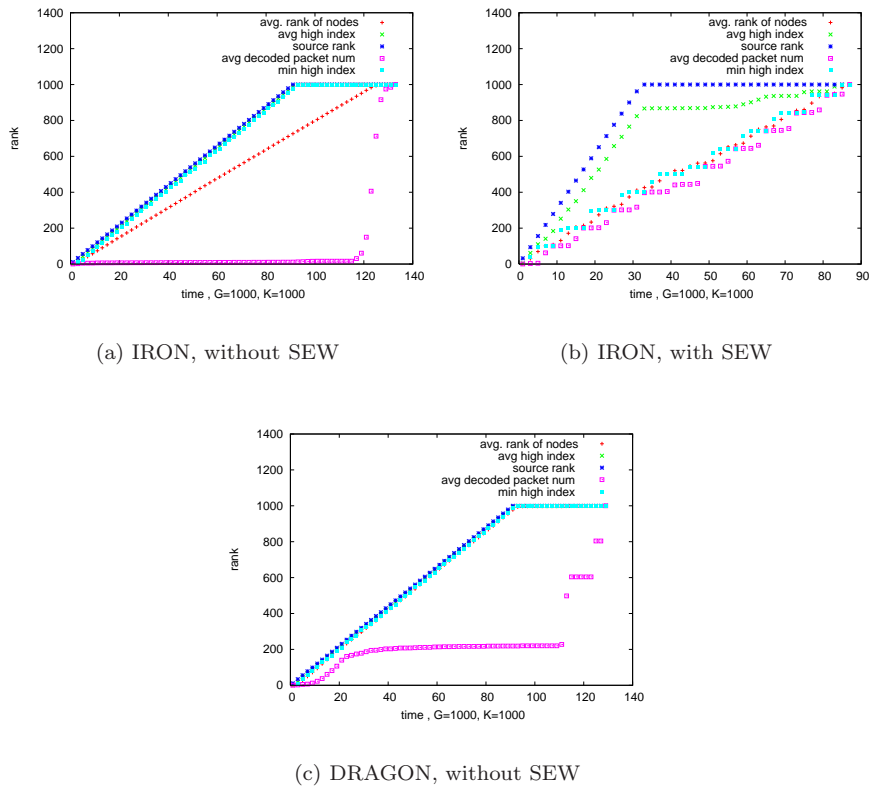


Figure 4: Evolution of avg. D , avg. (I_{high}) , min. (I_{high}) and source rank, with high mobility, $N=200$ $M=8.867$

As seen in Fig. 4, SEW could decrease the gap between the average number of decoded packets and average rank of nodes. Hence this evidences the success of real-time decoding: indeed, on that example, and thanks to this small gap, a node could decode more than 80 percent of received packets, (the results for

DRAGONCAST are comparable and are not reported here, but the next section evidence that even in the case with less mobility DRAGONCAST also achieves 80 % real-time decoding).

On the contrary, the results without SEW show that a node can decode only a fraction of its received coded packets for most of the simulation's duration (in the example, about 5 % for IRON, and 20 % for DRAGON), and will then decode most of the coded packets suddenly, at the end of the simulation. Such behavior is not uncommon: indeed the difference between being able to decode or not a whole set of packets may be made by one single additional packet.

In this spirit, we can explain the different decoding success rates by comparing the evolution of I_{high} and of the average rank of nodes. In the simulation without using SEW, the high index of a node I_{high} stays higher than the rank of the node and hence the node will not get a chance to perform real-time decoding: at the same time as the node gets more useful coded packets for the decoding process, it gets also get additional coefficients to eliminate.

On the contrary, in the simulation using SEW, the average high index I_{high} increases more slowly than the rank of the source and at the similar pace with the average rank of nodes, as seen in Figure 4(b). This keeps I_{high} close to the rank. Therefore, in these simulations, nodes are able to decode more than 80 percent of received packets during almost all simulation time.

Results only using DRAGON also show that DRAGON enables real-time decoding from time to time without using SEW as seen in Figure 4(c). Figure 4(c) shows that average rank of all nodes and average I_{high} of all nodes increases similarly. They increase at the similar pace but there steadily exists a small gap between them. Hence, I_{high} of a node does not meet a rank of a node, and RTD of only using DRAGON is overall low as 0.2 almost until the end of the simulation. Hence, even though DRAGON is performing better than IRON on this example, the results show real-time decoding cannot be expected with DRAGON alone: hence the full DRAGONCAST protocol (DRAGON+SEW) is necessary.

6.2 Efficiency and Real-Time Decoding

Our method SEW enables real-time decoding, but the real-time decoding rate is naturally related with a SEW window size K . As the SEW window size gets smaller, the real-time decoding rate increases. However, on the other hand, a too small SEW window size will decrease innovative packet rates, because it will force some nodes to retransmit packets from the same subset more often until some neighbors reach their own rank. These retransmissions from the same subset are more likely to be redundant to up-to-date neighbors and this may result in efficiency decrease.

Therefore, there exists a natural tradeoff between energy-efficiency and the amount of real-time decoding. However, when the rate selection is ensuring globally an uniform, regular, increase of the ranks of every node, then the gap between two neighbors would stay limited. This is, for instance, the intent of DRAGON. In that case, one can hypothesize that the ideal window size of SEW would be on the order of magnitude of the natural average gap between two neighbors. The impact of SEW on energy-efficiency would then be expected to be limited.

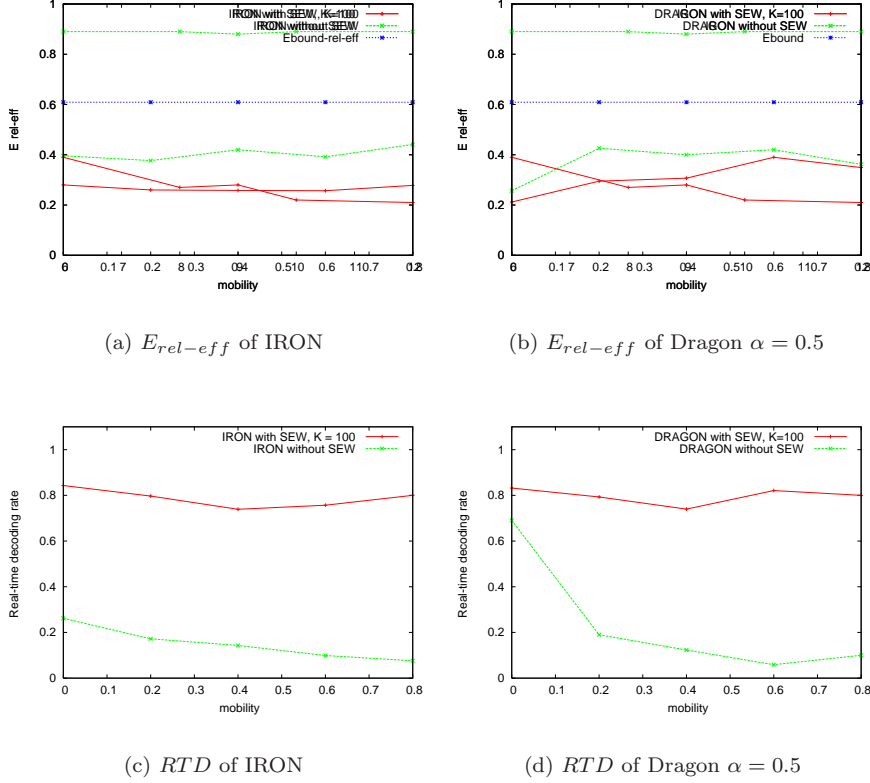


Figure 5: $E_{rel-eff}$ and decoding rate with changing mobility, $N=200$ $M=8.867$

Fig. 5 shows the relation between efficiency and a real-time decoding rate (RTD) in networks with high mobility. In Fig. 5, each value on x-axis (mobility) represents an average moving speed of a node (a value 0.25 corresponds to 275 m/sec) The source rate was fixed as 10 packets per second, a packet of 512 bytes. When using DRAGON, we tuned the adaption speed by setting the parameter α to $\alpha = 0.5$.

From Fig. 5 we observed several notable results.

The first one is that, as explained in the previous section, SEW could improve RTD dramatically, as intended, up to approximately 0.8 in these simulations. Even if DRAGON would allow some amount of real-time decoding in some cases with no mobility, also it appears that these opportunities disappear with more mobility, and hence SEW appears as a necessity also here.

The second one is the illustration of the energy-efficiency of DRAGONCAST: compared to the bound of routing when the network would be static, it is within a factor 2 of that absolute upper-bound for energy-efficiency of routing method (stronger than the optimal broadcast method). This indicates how the combination of the simple algorithms of DRAGONCAST and network coding permits efficient broadcast in a context where broadcast with routing could be difficult (high mobility).

The last observation is the illustration of the tradeoff between decoding and energy-efficiency: as one may see, using SEW has an limited but negative

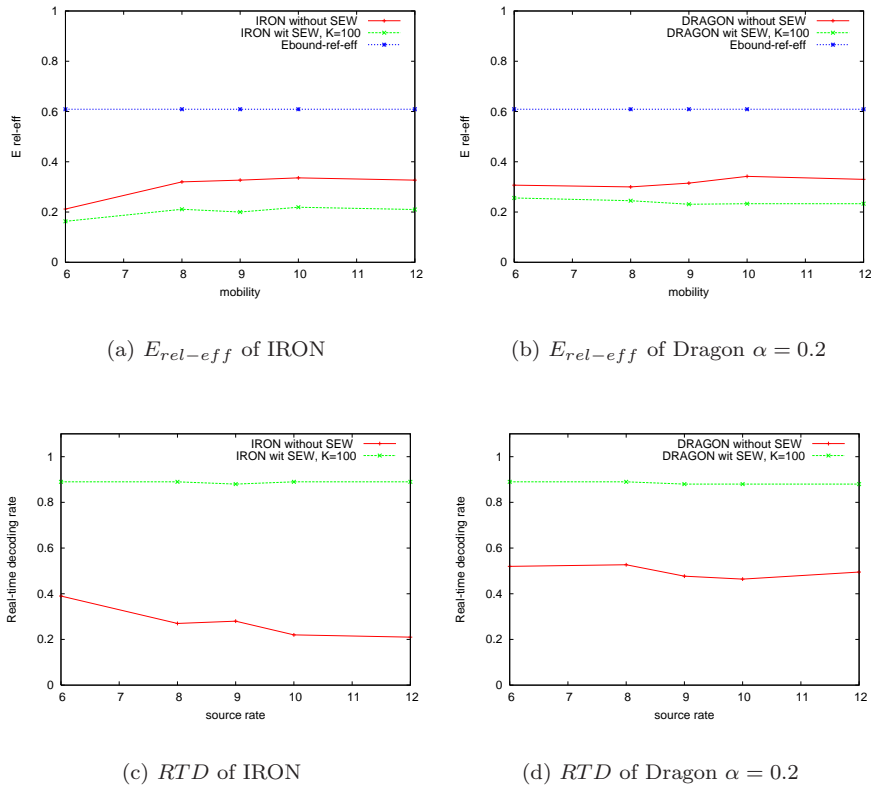


Figure 6: $E_{rel-eff}$ and decoding rate with changing source rate, speed=33m/sec N=200 M=8.867

impact on the energy-efficiency of DRAGON. This impact is more marked for IRON, because generally IRON fails to uniformly spread information at a rate comparable to the source rate.

Figure 6 shows simulation results in relatively slow networks (mobility = 33 m/sec). These simulations were done, this time, by varying the source rate ranging from 6 packets (3 Kbyte) per second to 12 packets (6 Kbyte) per second. For these simulations, the parameter for adaptation speed with DRAGON was tuned to $\alpha = 0.2$. From these results, represented in Fig. 6, a part of the previous observations can be reiterated, but one may observe new points.

First, DRAGON and DRAGONCAST did successfully adapt the rate of intermediate nodes to the diverse source rates as the near-constant energy-efficiency $E_{ref-eff}$ of DRAGON shows in Fig. 6(d). Second, DRAGON does not lose much efficiency when it is combined with SEW. Fig. 6(d) shows that DRAGON loses at most 20 % efficiency (less than IRON) there.

In summary, the simulation results have shown several interesting points: the first point is that the algorithm SEW has limited impact in terms of energy-efficiency. The second one is that SEW does indeed permit real-time decoding regardless of mobility, hence it is a necessary component of the protocol DRAGONCAST. The last point is that the energy-efficiency of DRAGONCAST is

quite satisfying, even compared to a optimistic upper bound of the optimal non-coding method, and even in networks with notable mobility.

7 Conclusion

We have introduced a new protocol for broadcasting with network coding in a wireless mobile network: DRAGONCAST. It relies on three building blocks: a real-time decoding algorithm SEW which constrains the coded packet transmissions, but allows decoding the source stream without requiring to wait for its end; a rate adjustment algorithm, DRAGON, that performs a control so that the coded source packets are properly propagated everywhere, while still staying energy-efficient; and a termination protocol.

We evidenced and investigated the performance of these building blocks, experimentally by simulations. They have shown dramatic improvement in real-time decoding when SEW is used with a limited cost in energy-efficiency. They have shown also more generally that, despite its simplicity, DRAGONCAST is an energy-efficient protocol, that performs adequately in mobile context.

Future work includes further investigation and modeling of the relationship between the parameters and the expected performance.

References

- [1] R. Ahlswede, N. Cai, S.-Y. R. Li and R. W. Yeung, “*Network Information Flow*”, IEEE Trans. on Information Theory, vol. 46, no.4, Jul. 2000
- [2] T. Ho, R. Koetter, M. Médard, D. Karger and M. Effros, “*The Benefits of Coding over Routing in a Randomized Setting*”, International Symposium on Information Theory (ISIT 2003), Jun. 2003
- [3] D. S. Lun, M. Médard, R. Koetter, and M. Effros, “*On coding for reliable communication over packet networks*”, Technical Report #2741, MIT LIDS, Jan. 2007
- [4] Z. Li, B. Li, D. Jiang, L. C. Lau, “*On Achieving Optimal Throughput with Network Coding*” Proc. INFOCOM 2005.
- [5] Y. Wu, P. A. Chou, and S.-Y. Kung, “*Minimum-Energy Multicast in Mobile Ad Hoc Networks using Network Coding*”, IEEE Trans. Commun., vol. 53, no. 11, pp. 1906-1918, Nov. 2005
- [6] D. S. Lun, N. Ratnakar, M. Médard, R. Koetter, D. R. Karger, T. Ho, E. Ahmed, and F. Zhao, “*Minimum-Cost Multicast over Coded Packet Networks*”, IEEE/ACM Trans. Netw., vol. 52, no. 6, Jun. 2006
- [7] P. A. Chou, Y. Wu, and K. Jain, “*Practical Network Coding*”, Forty-third Annual Allerton Conference on Communication, Control, and Computing, Monticello, IL, Oct. 2003
- [8] S. Chachulski, M. Jennings, S. Katti and D. Katabi, “*Trading Structure for Randomness in Wireless Opportunistic Routing*”, SIGCOMM’07

- [9] S. Y. Cho and C. Adjih “*Wireless Broadcast with Network Coding: Dynamic Rate Selection*”, Med-Hoc-Net 2008, June 2008, Palma de Mallorca, Spain
- [10] S. Y. Cho and C. Adjih “*Network Coding for Wireless Broadcast: Rate Selection with Dynamic Heuristics*”, INRIA Research Report RR-6349, Nov 2007.
- [11] A. Kamra, V. Misra, J. Feldman and D. Rubenstein “*Growth Codes: Maximizing Sensor Network Data Persistence*” SIGCOMM 2006
- [12] M.Luby, “*LT Codes*”, 43rd Annual IEEE Symposium on Foundations of Computer Science, 2002
- [13] S.-Y. R. Li, R. W. Yeung, and N. Cai. ”Linear network coding”. IEEE Transactions on Information Theory , Februray, 2003
- [14] Y. Wu, P. A. Chou, and S.-Y. Kung, “*Minimum-Energy Multicast in Mobile Ad Hoc Networks using Network Coding*”, IEEE Trans. Commun., vol. 53, no. 11, pp. 1906-1918, Nov. 2005
- [15] R. Koetter, M. Medard, “*An algebraic approach to network coding*”, IEEE/ACM Transactions on Networking, Volume 11, Issue 5, Oct. 2003
- [16] C. Fragouli, J. Widmer, and J.-Y. L. Boudec, “*A Network Coding Approach to Energy Efficient Broadcasting*”, Proceedings of INFOCOM 2006, Apr. 2006
- [17] C. Fragouli, J.-Y. L. Boudec, and J. Widmer, “*Network Coding : an Instant Primer*”, Proceedings of ACM SIGCOMM Computer Communicatino Review, vol. 36, no. 4, 2006
- [18] A. Dana, R. Gowaikar, R. Palanki, B. Hassibi, and M. Effros, “*Capacity of Wireless Erasure Networks*”, IEEE Trans. on Information Theory, vol. 52, no.3, pp. 789-804, Mar. 2006
- [19] D. S. Lun, M. Médard, R. Koetter, and M. Effros, “*Further Results on Coding for Reliable Communication over Packet Networks*” International Symposium on Information Theory (ISIT 2005), Sept. 2005
- [20] B. Clark, C. Colbourn, and D. Johnson, “*Unit disk graphs*”, Discrete Mathematics, Vol. 86, Issues 1-3, Dec. 1990
- [21] C. Fragouli and E. Soljanin, ”*A connection between network coding and convolutional codes*”, IEEE International Conference on Communications (ICC), vol. 2, pp. 661-666, June 2004.
- [22] S. Deb, M. Effros, T. Ho, D. Karger, R. Koetter, D. Lun, M. Medard and R. Ratnakar, “*Network Coding for Wireless Application A Brief Tutorial*”, IWVAN05.
- [23] J. S. Park, M. Gerla, D.S. Lun, Y. Yi, and M. Médard, *IEEE Personal Communications*. Volume 13, Issue 5, October 2006 Page(s):76 - 81
- [24] J.S. Park, D. S. Lun, F. Soldo, M. Gerla, and M. Médard *Performance of network coding in ad hoc networks*. Proc. IEEE Milcom 2006, October 2006.



Centre de recherche INRIA Paris – Rocquencourt
Domaine de Voluceau - Rocquencourt - BP 105 - 78153 Le Chesnay Cedex (France)

Centre de recherche INRIA Bordeaux – Sud Ouest : Domaine Universitaire - 351, cours de la Libération - 33405 Talence Cedex
Centre de recherche INRIA Grenoble – Rhône-Alpes : 655, avenue de l'Europe - 38334 Montbonnot Saint-Ismier
Centre de recherche INRIA Lille – Nord Europe : Parc Scientifique de la Haute Borne - 40, avenue Halley - 59650 Villeneuve d'Ascq
Centre de recherche INRIA Nancy – Grand Est : LORIA, Technopôle de Nancy-Brabois - Campus scientifique
615, rue du Jardin Botanique - BP 101 - 54602 Villers-lès-Nancy Cedex
Centre de recherche INRIA Rennes – Bretagne Atlantique : IRISA, Campus universitaire de Beaulieu - 35042 Rennes Cedex
Centre de recherche INRIA Saclay – Île-de-France : Parc Orsay Université - ZAC des Vignes : 4, rue Jacques Monod - 91893 Orsay Cedex
Centre de recherche INRIA Sophia Antipolis – Méditerranée : 2004, route des Lucioles - BP 93 - 06902 Sophia Antipolis Cedex

Éditeur
INRIA - Domaine de Voluceau - Rocquencourt, BP 105 - 78153 Le Chesnay Cedex (France)
<http://www.inria.fr>
ISSN 0249-6399