



HAL
open science

Evolving Symbolic Controllers

Nicolas Godzik, Marc Schoenauer, Michèle Sebag

► **To cite this version:**

Nicolas Godzik, Marc Schoenauer, Michèle Sebag. Evolving Symbolic Controllers. 4th European Workshop on Evolutionary Robotics, Apr 2003, Essex, United Kingdom. pp.638-650. inria-00145206

HAL Id: inria-00145206

<https://inria.hal.science/inria-00145206>

Submitted on 9 May 2007

HAL is a multi-disciplinary open access archive for the deposit and dissemination of scientific research documents, whether they are published or not. The documents may come from teaching and research institutions in France or abroad, or from public or private research centers.

L'archive ouverte pluridisciplinaire **HAL**, est destinée au dépôt et à la diffusion de documents scientifiques de niveau recherche, publiés ou non, émanant des établissements d'enseignement et de recherche français ou étrangers, des laboratoires publics ou privés.

Evolving Symbolic Controllers

Nicolas Godzik¹, Marc Schoenauer¹, and Michèle Sebag²

¹ Projet Fractales, INRIA Rocquencourt, France

² LRI, Université Paris-Sud, France

Published in G. Raidl et al., eds, *Applications of Evolutionary Computing*, pp 638-650, LNCS 2611, Springer Verlag, 2003.

Abstract. The idea of *symbolic controllers* tries to bridge the gap between the top-down manual design of the controller architecture, as advocated in Brooks' subsumption architecture, and the bottom-up designer-free approach that is now standard within the Evolutionary Robotics community. The designer provides a set of elementary behavior, and evolution is given the goal of assembling them to solve complex tasks. Two experiments are presented, demonstrating the efficiency and showing the recursiveness of this approach. In particular, the sensitivity with respect to the proposed elementary behaviors, and the robustness w.r.t. generalization of the resulting controllers are studied in detail.

1 Introduction

There are two main trends in autonomous robotics. There are two main trends in autonomous robotics. The first one, advocated by R. Brooks [2], is a human-specified deterministic approach: the tasks of the robot are manually decomposed into a hierarchy of independent sub-tasks, resulting in the the so-called *subsumption architecture*.

On the other hand, evolutionary robotics (see e.g. [13]), is generally viewed as a pure black-box approach: some controllers, mapping the sensors to the actuators, are optimized using the Darwinian paradigm of Evolutionary Computation; the programmer only designs the fitness function.

However, the scaling issue remains critical for both approaches, though for different reasons. The efficiency of the human-designed approach is limited by the human factor: it is very difficult to decompose complex tasks into the subsumption architecture. On the other hand, the answer of evolutionary robotics to the complexity challenge is very often to come up with an ad hoc (sequence of) specific fitness function(s). The difficulty is transferred from the internal architecture design to some external action on the environment. Moreover, the black-box approach makes it extremely difficult to understand the results, be they successes or failures, hence forbidding any capitalization of past expertise for further re-use. This issue is discussed in more details in section 2.

The approach proposed in this work tries to find some compromise between the two extremes mentioned above. It is based on the following remarks: First, scaling is one of the most critical issues in autonomous robotics. Hence, the *same*

mechanism should be used all along the complexity path, leading from primitive tasks to simple tasks, and from simple tasks to more complex behaviors.

One reason for the lack of intelligibility is that the language of the controllers consists in low-level orders to the robot actuators (e.g. speeds of the right and left motors). Using instead hand-coded basic behaviors (e.g. forward, turn left or turn right) as proposed in section 3 should allow one to better understand the relationship between the controller outputs and the resulting behavior. Moreover, the same approach will allow to recursively build higher level behaviors from those evolved simple behaviors, thus solving more and more complex problems.

Reported experiments tackle both aspects of the above approach. After describing the experimental setup in section 4, simple behaviors are evolved based on basic primitives (section 5). Then a more complex task is solved using the results of the first step (section 6). Those results are validated by comparison to the pure black-box evolution, and important issues like the sensitivity w.r.t. the available behaviors, and the robustness w.r.t generalization are discussed. The paper ends by revisiting the discussion in the light of those results.

2 State of the art

The trends in autonomous robotics can be discussed in the light of the “innate vs acquired” cognitive aspects – though at the time scale of evolution. From that point of view, Brooks’ subsumption architecture is extreme on the “innate” side: The robots are given all necessary skills by their designer, from basic behaviors to the way to combine them. Complex behaviors so build on some “instinctive” predefined simple behaviors. Possible choices lie in a very constrained space, guaranteeing good performances for very specific tasks, but that does not scale up very well: Brooks’ initial goal was to reach the intelligence of insects [3].

Along similar lines are several computational models of action-selection (e.g. Spreading Activation Networks [10], reinforcement learning [8,7], ...). Such approaches have two main weaknesses. The first one is that such architecture is biologically questionable – but do we really care here? The second weakness is concerned with the autonomy issue. Indeed, replacing low level reflexes by decisions about high level behaviors (use this or that behavior now) might be beneficial. However, how to program the *interactions* of such reflexes in an open world amounts to solve the *exploration vs exploitation* dilemma – and both Game Theory and Evolutionary Computation have underlined the difficulty of answering this question.

At the other extreme of the innate/acquired spectrum is the evolutionary robotics credo: any a priori bias from the designer can be harmful. Such position is also defended by Bentley [1] in the domain of optimal design, where it has been reinforced by some very unexpected excellent solutions that arose from evolutionary design processes. In the Evolutionary Robotics area, this idea has been sustained by the recent revisit by Tuci, Harvey and Quinn [16] of an experiment initially proposed by Yamauchi and Beer [18]: depending on some random variable, the robot should behave differently (i.e. go toward the light,

or away from it). The robot must hence learn from the first epoch the state of that random variable, and act accordingly in the following epochs.

The controller architecture is designed manually in the original experience, whereas evolution has complete freedom in its recent remake [16]. Moreover, Tuci et al. use no explicit reinforcement. Nevertheless, the results obtained by this recent approach are much better than the original results - and the authors claim that the reason for that lies in their complete black-box approach.

However, whereas the designers did decide to use a specifically designed modular architecture in the first experiment, the second experience required a careful design of the fitness function (for instance, though the reward lies under the light only half of the time, going toward the light has to be rewarded more than fleeing away to break the symmetry). So be it at the “innate” or “acquired” level, human intervention is required, and must act at some very high level of subtlety.

Going beyond this virtual “innate/acquired” debate, an intermediate issue would be to be able to evolve complex controllers that could benefit from human knowledge but that would not require high level of intervention with respect to the complexity of the target task.

Such an approach is what is proposed here: the designer is supposed to help the evolution of complex controllers by simply seeding the process with some simple behaviors – hand-coded or evolved – letting evolution arrange those building blocks together. An important side-effect is that the designer will hopefully be able to better *understand* the results of an experiment, because of the greater intelligibility of the controllers. It then becomes easier to manually optimize the experimental protocol, e.g. to gradually refine the fitness in order to solve some very complex problems.

3 Symbolic controllers

3.1 Rationale

The proposed approach pertains to Evolutionary Robotics [13]. Its originality lies in the representation space of the controllers, i.e. the search space of the evolutionary process. One of the main goals is that the results will be intelligible enough to allow an easy interpretation of the results, thus easing the whole design process.

A frequent approach in Evolutionary Robotics is to use Neural Networks as controllers (feedforward or recurrent, discrete or continuous). The inputs of the controllers are the sensors (Infra-red, camera, . . .), plus eventually some reward “sensor”, either direct [18] or indirect [16].

The outputs of the controllers are the actuators of the robot (e.g. speeds of the left and right motors for a Khepera robot). The resulting controller is hence comparable to a program in machine language, thus difficult to interpret. To overcome this difficulty, we propose to use higher level outputs, namely involving four possible actions: *Forward*, *Right*, *Left* and *Backward*. In order to allow some flexibility, each one of these symbolic actions should be tunable by some

continuous parameter (e.g. speed of forward displacement, or turning angle for left and right actions).

The proposed *symbolic controller* has eight outputs with values in $[0, 1]$: the first four outputs are used to specify which action will be executed, namely action i , with $i = \text{Argmax}(\text{output}(j), j = 1..4)$. Output $i + 4$ then gives the associated parameter. From the given action and the associated parameter, the values of the commands for the actuators are computed by some simple hard-coded program.

3.2 Discussion

Using some high level representation language for the controller impacts on both the size of the search space, and the possible modularity of the controller.

At first sight, it seems that the size of the search space is increased, as a symbolic controller has more outputs than a classical controller. However, at the end of the day, the high level actions are folded into the two motor commands. On the other hand, using a symbolic controller can be viewed as adding some constraints on the search space, hence reducing the size of the part of the search space actually explored. The argument here is similar to the one used in statistical learning [17], where rewriting the learning problem into a very high dimensional space actually makes it simpler. Moreover, the fitness landscape of the space that is searched by a symbolic controller has many neutral plateaus, as only the highest value of the first outputs is used – and neutrality can be beneficial to escape local optima [6].

On the other hand, the high level primitives of symbolic controllers make room for modularity. And according to Dawkins [4], the probability to build a working complex system by a randomized process increases with the degree of modularity. It should be noted that this principle is already used in Evolutionary Robotics, for instance to control the robot gripper : the outputs of the controllers used in [13] are high-level actions (e.g. *GRAB*, *RAISE GRIPPER*, ...), and not the commands of the gripper motors.

Finally, there are some similarities between the symbolic controller approach and reinforcement learning. Standard reinforcement learning [15,8] aims at finding an optimal policy. This requires an intensive exploration of the search space. In contrast, evolutionary approaches sacrifice optimality toward satisfactory timely satisfying solutions. More recent developments [11], closer to our approach, handle continuous state/action spaces, but rely on the specification of some relevant initial policy involving manually designed “reflexes”.

4 Experimental setup

Initial experiments have been performed using the Khepera simulator *E0Bot*, that was developed by the first author from the *EvoRobot* software provided by S. Nolfi and D. Floreano [13]. *EvoRobot* was ported on Linux platform using *OpenGL* graphical library, and interfaced with the *E0* library [9]. It is hence now possible to use all features of *E0* in the context of Evolutionary Robotics, e.g.

other selection and replacement procedures, multi-objective optimization, and even other paradigms like Evolution Strategies and Genetic Programming. However, all experiments presented here use as controllers Neural Networks (NNs) with fixed topology. The genotype is hence the vector of the (real-valued) weights of the NN. Those weights evolve in $[-1, 1]$ (unless otherwise mentioned), using a (30, 150)-Evolution Strategy with intermediate crossover and self-adaptive Gaussian mutation [14]: Each one of 30 parents gives birth to 5 offspring, and the best 30 of the 150 offspring become the parents for next generation. All experiments run for 250 generations, requiring about 1h to 3h depending on the experiment.

All results shown in the following are statistics based on at least 10 independent runs. One fitness evaluation is made of 10 *epochs*, and each epoch lasts from 150 to 1000 time steps (depending on the experiment), starting from a randomly chosen initial position.

5 Learning a simple behavior: obstacle avoidance

5.1 Description

The symbolic controller (SC) with 8 outputs, described in section 3.1, is compared to the classical controller (CC) the outputs of which are the speeds of both motors. Both controllers have 8 inputs, namely the IR sensors of the Khepera robot in active mode (i.e. detecting the obstacles).

Only Multi-Layer Perceptrons (MLP) were considered for this simple task. Some preliminary experiments with only two layers (i.e. without hidden neurons) demonstrated better results for the Symbolic Controllers than for the Classical Controller. Increasing the number of hidden neurons increased the performance of both types of controllers. Finally, to make the comparison “fair”, the following architectures were used: 14 hidden neurons for the SC, and 20 hidden neurons for the CC, resulting in roughly the same number of weights (216 vs 221).

The fitness function[12], is defined as $\sum_{epoch} \sum_t |V(t)|(1 - \sqrt{|\delta V(t)|})$, where $V(t)$ is the average speed of the robot at time t , and $\delta V(t)$ the absolute value of the difference between the speeds of the left and right motors. The difference with the original fitness function is the lack of IR sensor values in the fitness: the obstacle avoidance behavior is here implicit, as an epoch immediately ends whenever the robot hits an obstacle. The arena is similar to that in [12].

5.2 Results

The first results for the SC were surprising: half of the runs, even without hidden neurons, find a loophole in the fitness function: due to the absence of inertia in the simulator, an optimal behavior is obtained by a rapid succession of *FORWARD - BACKWARD* movements at maximum speed - obviously avoiding all obstacles!

A degraded SC that has no *BACKWARD* action cannot take advantage of this bug. Interestingly, classical controllers only discover this trick when provided with more than 20 hidden neurons **and** if the weights are searched in a larger interval (e.g. $[-10, 10]$).

Nevertheless, in order to definitely avoid this loophole, the fitness is modified in such a way that it increases only when the robot moves forward (sum of both motor speeds positive)¹.

This modification does not alter the ranking of the controllers: the Symbolic Controller still outperforms the Classical Controller. This advantage somehow vanishes when more hidden neurons are added (see Table 1), but the results of the SC exhibit a much smaller variance.

Architecture	CC	CS
8-2 / 8-6	861 ± 105	1030 ± 43
8-8-2 / 8-8-6	1042 ± 100	1094 ± 55
8-20-2 / 8-14-6	1132 ± 55	1197 ± 16
8-20-2 / 8-14-6*	1220 ± 41	1315 ± 6

Table 1. Averages and standard deviations for 10 independent runs for the obstacle avoidance experiment. * this experiment was performed in a more constrained environment.

6 Evolution of a complex behavior

6.1 Description

The target behavior is derived the homing experiment first proposed in [5], combining exploration of the environment with energy management. The robot is equipped with an accumulator. The robot completely consumes the accumulator energy in 285 times steps. A specific recharge area is signaled by a light in the arena. There are no obstacles in the arena, and the position of the recharge area is randomly assigned at each epoch.

The fitness is increased proportionally to the forward speed of the robot (as described in section 5.2), but only when the robot is not in the recharge area.

In the original experiment [5], the accumulator was instantly recharged when the robot entered the recharge area. We suppose here that the recharge is proportional to the time spent in the recharge area (a full recharge takes 100 times steps). Moreover, the recharge area is not directly “visible” for the robot, whereas it was signaled by a black ground that the robot could detect with a sensor in [5]. These modifications increase the complexity of the task.

6.2 Supervisor architectures

The *supervisor* architecture is a hierarchical controller that decide at each time step which one of the basic behaviors it supervises will be executed. Its number of outputs is the number of available basic behaviors, namely:

- *Obstacle avoidance.* This behavior is evolved as described in section 5.2;
- *Light following.* The fitness used to evolve this behavior is the number of times it reaches the light during 10 epoch (no energy involved);

¹ Further work will introduce inertia in the simulator, thus avoiding this trap – and possibly many others.

- *Stop*. This behavior is evolved to minimize the speed of the center of mass of the robot. Note that a very small number of generations is needed to get the perfect behavior, but that all evolved *Stop* behaviors in fact rotate rapidly with inverse speeds on both motors.
- *Area sweeping*. The arena is divided in small squares, and the fitness is the number of squares that were visited by the robot during 10 epoch ².

Two types of supervisors have been tested: the Classical Supervisor (CS), using Classical Controllers as basic behaviors, and the Symbolic Supervisor (SS), that uses symbolic controllers (see section 3) as basic behaviors. The NN implementing the supervision are Elman networks ³ with 5 hidden neurons.

Baseline experiments were also performed using *direct controllers* with the same Elman architecture - either Classical, or Symbolic (see section 3).

All supervisors and direct controllers have 17 inputs: the 8 IR sensors in active mode for obstacle detection, the 8 IR sensors in passive mode for ambient light detection, and the accumulator level.

The number of outputs is 2 for the classical controller, the speeds of the motors, 6 for the symbolic controller using the three hard-coded behaviors *FORWARD*, *LEFT*, *RIGHT* (see section 3), and 4 for both supervisors (Classical and Symbolic) that use the evolved basic behaviors *obstacle avoidance*, *light following*, *area sweeping* and *stop*. The *obstacle avoidance* behaviors that are used are the best results obtained in the experiments of section 5. Similar experiments (i.e. with the same architectures) were run for the *area sweeper* and the best results of 10 runs were chosen. For the simpler *light following* and *stop*, 2-layers networks were sufficient to get a perfect fitness.

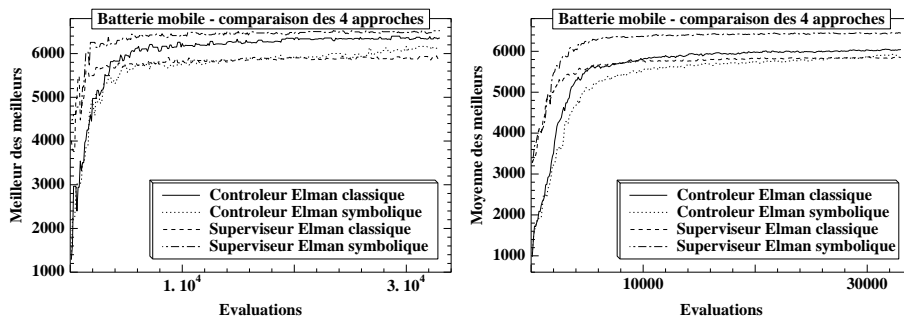


Fig. 1. Maximum (left) and average (right) of best fitness in the population for the energy experiments.

² This performance is external, i.e. it could not be computed autonomously by the robot. But the resulting controller only uses internal inputs.

³ Elman recurrent neural networks are 3 layers MLP in which all neurons of the hidden layer are totally connected with one another.

6.3 Results

The statistics over 10 independent runs can be seen on Figure 1. Three criteria can be used to compare the performances of the 4 architectures: the best overall performance, the variance of the results, and how rapidly good performances are obtained. The sensitivity and generalization abilities of the resulting controllers are important criteria that require additional experiments (sections 6.4, 6.5).

The best overall performance are obtained by the SS (Symbolic Supervisor) architecture. Moreover, it exhibits a very low variance (average best fitness is 6442 ± 28). Note that overpassing a fitness of 6400 means that the resulting behavior could go on for ever, almost optimally storing fitness between the recharge phases).

Next best architecture is the CC (Classical Controller). But whereas its best overall fitness is only slightly less than that of the SS, the variance is 10 times larger (average best fitness is 6044 ± 316 , with best at 6354). The difference is statistically significant with 95% confidence using the Student T-test.

The SC (Symbolic Controller) and CS (Classical Supervisors) come last, with respective average best fitness of 5902 ± 122 and 5845 ± 27 .

Some additional comments can be made about those results. First, both supervisors architectures exhibit a very good best fitness (≈ 3200) in the initial population: such fitness is in fact obtained when the supervisors only use the obstacle avoidance – they score maximum fitness until their accumulator level goes to 0. Of course, the direct controller architectures require some time to reach the same state (more than 2000 evaluations).

Second, the variance for both supervisor architectures is very low. Moreover, it seems that this low variance is not only true at the performance level, but also at the behavior level: whereas all symbolic supervisors do explore the environment until their energy level becomes dangerously low, and then head toward the light and **stay** in the recharge area until their energy level is maximal again, most (but not all) of the direct controller architectures seem to simply stay close to the recharge area, entering it randomly.

One last critical issue is the low performance of the Symbolic Controller. A possible explanation is the existence of the neutrality plateaus discussed in section 3.2: though those plateaus help escaping local minima, they also slow down the learning process. Also it appears clearly on Figure 1-left that the SC architecture is the only one that seems to steadily increase its best fitness until the very end of the runs. Hence, the experiment was carried on for another 250 generations, and indeed the SC architecture did continue to improve (over a fitness level of 6200) – while all other architectures simply stagnates.

The evolved behaviors have been further examined. Figure 2-left shows a typical plot of the number of calls of each basic behaviors by the best evolved Symbolic Supervisor during one fitness evaluation. First, it appears that both supervisors architectures mainly use the *obstacle avoidance* behavior, never use the *area sweeping*, and, more surprisingly, almost never use the *light following*.

when they see the light, they turn using the *stop* behavior (that consists in fast rotation), and then go to the light using the *obstacle avoidance*. However, once on the recharge area, they use the *stop* until the energy level is back over 90%.

Investigating deeper, it appears that the speeds of the *light following* and *area sweeper* are lower than that of the *obstacle avoidance* – and speed is crucial in this experiment. Further experiments will have to modify the speeds of all behaviors to see if it makes any difference. However, this also demonstrates that the supervisor can discard some behavior that proves under-optimal or useless.

6.4 Sensitivity Analysis

One critical issue of the proposed approach is how to ensure that the “right” behavior will be available to the supervisor. A possible solution is to propose a large choice – but will the supervisor be able to retain only the useful ones? In order to assess this, the same energy experiment was repeated but many useless, or even harmful, behaviors were added to the 4 basic behaviors.

First, 4 behaviors were added to the existing ones: *random*, *light avoiding*, *crash* (goes straight into the nearest wall!) and *stick to the walls* (tries to stay close to a wall). The first generations demonstrated lower performances and higher variance than in the initial experiment, as all behaviors were used with equal probability. However, the plot of the best fitness (not shown) soon catches up with the plots of Figure 1, and after 150 generations, the results are hardly distinguishable. Looking at the frequency of use of each behavior, it clearly appears that the same useful behaviors are used (see Figure 2-left, and section 6.3 for a discussion). Moreover, the useless behaviors are scarcely used as evolution goes along, as can be seen on Figure 2-right (beware of the different scale).

These good stability results have been confirmed by adding 20 useless behaviors (5 times the same useless 4). The results are very similar - though a little worse, of course, as the useless behaviors are called altogether a little more often.

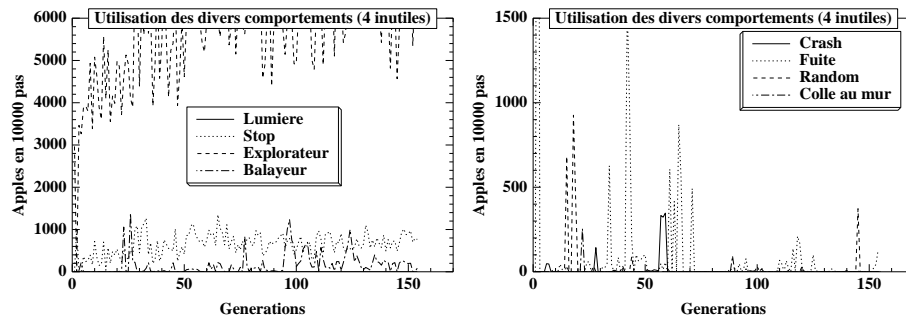


Fig. 2. Number of calls out of 10000 time steps of the **useful** (left) and **useless** (right) behaviors. The plots for the useful behaviors are roughly the same whether or not some useless behaviors are available.

6.5 Generalization

Several other experiments were performed in order to test the generalization abilities of the resulting controllers. The 10×4 best controllers obtained in the experiments above were tested in new experimental environments.

First, some obstacles were added in the environment (the arena was free of obstacle in the experiments described above). But no controller was able to go to the recharge area whenever an obstacle was in the way. However, when the evolution was performed with the obstacles, the overall results are about the same (with slightly worse overall performance, as predicted).

More interesting are the results obtained when the robots are put in an arena that is three times larger than the one used during evolution. The best generalization results are obtained by the Classical Controller architecture, with only a slight decrease of fitness (a few percents). Moreover, 100 additional generations of evolution in the new environment gives back the same level of fitness.

The Symbolic Controllers come next (in terms of generalization capability!): they initially lose around 10% of their fitness, then reach the same level again in 150 generations, and even overpass that level (see the discussion in section 6.3).

Surprisingly, both supervisor architectures fail to reach the same level of performance in the new environment even after a new cycle of evolution. The Symbolic Supervisor lose about 12.5% of their fitness, and only recover half of it, while the Classical Supervisors lose more than 20% and never recover.

These results can be at least partly explained by the behaviors that are obtained by the first experiments: whereas all direct controller architectures mainly stay around the recharge area, and thus are not heavily disturbed by the change of size of the arena, the Supervisor architectures use their exploration behavior and fail to turn back on time. The only surprising result is that they also fail to reach the same level of fitness even after some more generations ⁴.

This difference in the resulting behaviors also explains the results obtained in the last generalization experiment that will be presented here: the recharge of energy was made 2 times slower (or the energy consumption was made twice faster – both experiments give exactly the same results). Here, the results of the Symbolic Supervisors are clearly much better than those of the other architectures: in all cases, the robot simply stays in the recharge area **until the energy level is back to maximum**, using the *stop* behavior.

Surprisingly, most Classical Supervisors, though they also can use their *STOP* behavior, fail to actually reach the recharge area. On the other hand, both direct controller architecture never stop on the recharge area. However, while the Symbolic Controllers manage to survive more than one epoch for half of the trials, all Classical Controllers fail to do so.

This last generalization experiment shows a clear advantage to the Symbolic Controller architecture: it is the only one that actually learned to recharge the accumulator to its maximum before leaving the recharge area. But the ultimate

⁴ However, when restarting the evolution from scratch in the large arena, the SSs easily reach the 6400 fitness level, outperforming again all other architectures

test for controllers evolved using a simulator is of course to be applied on the real robot. This is on-going work, and the first experiments, applied to the obstacle avoidance behaviors, have confirmed the good performance of the symbolic controllers in any environment.

7 Discussion and Perspectives

The main contribution of this work is to propose some compromise between the pure black box approach where evolution is supposed to evolve everything from scratch, and the “transparent box” approach, where the programmer must decompose the task manually.

The proposed approach is based on a toolbox, or library, of behaviors ranging from elementary hand-coded behaviors to evolved behaviors of low to medium complexity. The combination and proper use of those tools is left to evolution. The new space of controllers that is explored is more powerful than the one that is classically explored in Evolutionary Robotics. For instance, it was able to easily find some loophole in the (very simple) obstacle behavior fitness; moreover, it actually discovered the right way to recharge its accumulator in the more complex homing experiment.

Adding new basic behaviors to that library allows one to gradually increase the complexity of the available controllers without having to cleverly insert those new possibilities in the available controllers: evolution will take care of that, and the sensitivity analysis demonstrated that useless behaviors will be filtered out at almost no cost (section 6.4). For instance, there might be some cases where a random behavior can be beneficial – and it didn’t harm the energy experiment. More generally, this idea of a library allows one to store experience from past experiments: any controller (evolved or hand-coded) can be added to the toolbox, and eventually used later on - knowing that useless tools will simply not be used.

Finally, using such a library increases the intelligibility of the resulting controllers, and should impact the way we evolutionary design controllers, i.e. fitness functions. One can add some constraints on the distribution over the use of the different available controllers, (e.g. use the light following action $\varepsilon\%$ of the time); by contrast, traditional evolutionary approach had to set up sophisticated *ad hoc* experimental protocol to reach the same result (as in [16]). Further work will have to investigate in that direction.

But first, more experiments are needed to validate the proposed approach (e.g. experiments requiring some sort of memory, as in [18,16]). The impact of redundancy will also be investigated: in many Machine Learning tasks, adding redundancy improves the quality and/or the robustness of the result. Several controllers that have been evolved for the same task, but exhibit different behaviors, can be put in the toolbox. It can also be useful to allow the overall controller to use all levels of behaviors simultaneously instead of the layered architecture proposed so far. This should allow to discover on the fly specific behaviors whenever the designer fails to include them in the library.

Alternatives for the overall architecture will also be looked for. One crucial issue in autonomous robotics is the adaptivity of the controller. Several architectures have been proposed in that direction (see [13] and references herein) and will be tried, like for instance the idea of auto-teaching networks.

Finally, in the longer run, the library approach helps to keep tracks of the behavior of the robot at a level of generality that can be later exploited by some data mining technique. Gathering the Frequent Item Sets in the best evolved controllers can help deriving some brand new macro-actions. The issue will then be to check how useful such macro-actions can be if added to the library.

References

1. P. J. Bentley, editor. *Evolutionary Design by Computers*. Morgan Kaufman Publishers Inc., 1999.
2. R. A. Brooks. A robust layered control system for a mobile robot. *Journal of Robotics and Automation*, 2(1):14–23, 1986.
3. R. A. Brooks. How to build complete creatures rather than isolated cognitive simulators. In Kurt VanLehn, editor, *Architectures for Intelligence: The 22nd Carnegie Mellon Symp. on Cognition*, pages 225–239. Lawrence Erlbaum Associates, 1991.
4. R. Dawkins. *The blind watchmaker*. Norton, W. W. and Company, 1988.
5. D. Floreano and F. Mondada. Evolution of homing navigation in a real mobile robot. *IEEE Transactions on Systems, Man, and Cybernetics*, 26:396–407, 1994.
6. I. Harvey. *The Artificial Evolution of Adaptive Behaviour*. PhD thesis, University of Sussex, 1993.
7. M. Humphrys. *Action Selection Methods Using Reinforcement Learning*. PhD thesis, University of Cambridge, 1997.
8. Leslie Pack Kaelbling, Michael L. Littman, and Andrew P. Moore. Reinforcement learning: A survey. *Journal of Artificial Intelligence Research*, 4:237–285, 1996.
9. M. Keijzer, J. J. Merelo, G. Romero, and M. Schoenauer. Evolving objects: a general purpose evolutionary computation library. In P. Collet et al., editors, *Artificial Evolution'01*, pages 229–241. Springer Verlag, LNCS 2310, 2002.
10. P. Maes. The dynamics of action selection. In *Proceedings of the 11th International Joint Conference on Artificial Intelligence*, 1989.
11. J.R. Millan, D. Posenato, and E. Dedieu. Continuous-action Q-learning. *Machine Learning Journal*, 49(23):247–265, 2002.
12. S. Nolfi and D. Floreano. How co-evolution can enhance the adaptive power of artificial evolution: implications for evolutionary robotics. In P. Husbands and J.A. Meyer, editors, *Proceedings of EvoRobot98*, pages 22–38. Springer Verlag, 1998.
13. S. Nolfi and D. Floreano. *Evolutionary Robotics*. MIT Press, 2000.
14. H.-P. Schwefel. *Numerical Optimization of Computer Models*. John Wiley & Sons, New-York, 1981. 1995 – 2nd edition.
15. R.S. Sutton and A. G. Barto. *Reinforcement learning*. MIT Press, 1998.
16. E. Tuci, I. Harvey, and M. Quinn. Evolving integrated controllers for autonomous learning robots using dynamic neural networks. In B. Hallam et al., editor, *Proc. of SAB'02*. MIT Press, 2002.
17. V. N. Vapnik. *Statistical Learning Theory*. Wiley, 1998.
18. B.M. Yamauchi and R.D. Beer. Integrating reactive, sequential, and learning behavior using dynamical neural network. In D. Cliff et al., editor, *Proc. SAB'94*. MIT Press, 1994.