



HAL
open science

The Radial Spanning Tree of a Poisson Point Process

François Baccelli, Charles Bordenave

► **To cite this version:**

François Baccelli, Charles Bordenave. The Radial Spanning Tree of a Poisson Point Process. [Research Report] RR-5707, INRIA. 2005, pp.73. inria-00070309

HAL Id: inria-00070309

<https://inria.hal.science/inria-00070309>

Submitted on 19 May 2006

HAL is a multi-disciplinary open access archive for the deposit and dissemination of scientific research documents, whether they are published or not. The documents may come from teaching and research institutions in France or abroad, or from public or private research centers.

L'archive ouverte pluridisciplinaire **HAL**, est destinée au dépôt et à la diffusion de documents scientifiques de niveau recherche, publiés ou non, émanant des établissements d'enseignement et de recherche français ou étrangers, des laboratoires publics ou privés.

The Radial Spanning Tree of a Poisson Point Process

François Baccelli — Charles Bordenave

N° 5707

Octobre 2005

Thème COM



*R*apport
de recherche

The Radial Spanning Tree of a Poisson Point Process

François Baccelli ^{*}, Charles Bordenave [†]

Thème COM — Systèmes communicants
Projet TREC

Rapport de recherche n° 5707 — Octobre 2005 — 73 pages

Abstract: We analyze a class of random spanning trees built on a realization of an homogeneous Poisson point process of the plane. This tree has a local construction rule and a radial structure with the origin as its root

We first use stochastic geometry arguments to analyze local functionals of the random tree such as the distribution of the length of the edges or the mean degree of the vertices. Far away from the origin, these local properties are shown to be close to those of the directed spanning tree introduced by Bhatt and Roy.

We then use the theory of continuous state space Markov chains to analyze some non local properties of the tree such as the shape and structure of its semi-infinite paths or the shape of the set of its vertices less than k generations away from the origin.

This class of spanning trees has applications in many fields and in particular in communications.

Key-words: Nearest neighbor graph, Directed spanning tree, asymptotic shape, stochastic geometry, continuous space Markov chain, small set.

^{*} INRIA-ENS, Département d'Informatique, ENS, 45 rue d'Ulm, F-75230 Paris Cedex 05, France, francois.baccelli@ens.fr

[†] INRIA-ENS, Département d'Informatique, ENS, 45 rue d'Ulm, F-75230 Paris Cedex 05, France, charles.bordenave@ens.fr

Sur l'arbre couvrant radial d'un processus ponctuel de Poisson

Résumé : Nous étudions une classe d'arbres couvrants aléatoires construits sur les réalisations d'un processus ponctuel de Poisson dans le plan. Ces arbres ont une règle de construction locale et une structure radiale avec une racine située en l'origine du plan.

Nous utilisons d'abord des arguments de géométrie stochastique pour analyser les propriétés locales de ces arbres aléatoires telles que la distribution de la longueur des arcs ou le degré moyen des noeuds. Lorsqu'on s'éloigne de l'origine, ces propriétés locales sont proches de celles de l'arbre couvrant dirigé introduit par Bhatt et Roy.

Nous utilisons ensuite le théorie des chaînes de Markov à espace d'état continu pour analyser certaines propriétés non locales de ces arbres comme la forme et la structure de leurs chemins semi-infinis ou encore la forme de l'ensemble des noeuds qui sont à moins de k générations de la racine.

Cette classe d'arbres a de nombreuses applications, notamment dans le domaine des communications.

Mots-clés : Graphe des plus proches voisins, arbre couvrant dirigé, forme asymptotique, géométrie stochastique, chaîne de Markov à espace d'état continu, ensemble petit.

1 Introduction

There is a current interest in graphs generated over a random point set. This class of graphs includes in particular the minimal spanning tree, the nearest neighbor graph or the geometric graphs, [16], [25]. On these graphs, the theory has mainly focused on large sample asymptotic when the random point sets consists of independent uniform points in the unit square.

In this paper we define a new model of tree generated over a point set, the *Radial Spanning Tree* (RST). This tree holds similarities with the minimal directed spanning tree ([11], [18], [17]) and the Poisson forest (as defined in [9], [8]). The mathematical analysis of the RST is conducted on a homogeneous Poisson point process (PPP) on the plane. The scope of this paper is two-fold : to prove some local geometric properties using stochastic geometry and to derive asymptotic properties such as the characterization of the semi-infinite paths.

This class of spanning trees has applications in many fields and especially in wireless sensor communication networks, where information has to be gathered at a central point called cluster head, and where the specificities of wireless communications make it so that it is best to do this in several small hops; another application can be found within the context of a class of information location algorithms used in peer to peer networks.

In the next section, we give the basic definition and we summarize our main results. Section 3 gives various distributions on local properties on the tree. In Section 4 we focus on the Directed Spanning Forest (DSF) which can be seen as the limit of the RST far away from the origin. In Sections 5.1 and 5.3, we prove asymptotic shape theorems on the RST. Section 5.2 contains a proof of a law of large of large numbers on a semi-infinite path of the RST and Section 6 the proof of a law of large numbers for the spatial averages. Finally in Section 7, we quickly discuss some extensions of the RST and give some open questions.

2 The Radial Spanning Tree

2.1 Definition

Let $|\bullet|$ denote a norm on \mathbb{R}^d and $B(x, r)$ the open ball of radius r and center x . A set of points N of \mathbb{R}^d is said to be *non-equidistant* if there do not exist points x, y, z, t of N such that $\{x, y\} \neq \{z, t\}$ and $|x - y| = |z - t|$.

If N is a countable set of points in \mathbb{R}^d with no accumulation points, we write for all bounded sets A :

$$N(A) = \sum_{x \in N} \mathbf{1}(x \in A).$$

Let N be a countable set of points in \mathbb{R}^d , non-equidistant, with no accumulation points and such that $0 \in N$. We define the RST of N , $\mathcal{T} = (N, E)$ with E the set of edges, as follows : each point, excluding the one in the origin, has an edge to its closest neighbor among the set of points which are closer to the origin. More formally, \mathcal{T} is defined by:

$$\begin{aligned} & \text{If } |y| < |x| \text{ and } x, y \in N \text{ then } (x, y) \in E \\ & \iff N(B(0, |x|) \cap B(x, |x - y|)) = 0. \end{aligned}$$

The non-equidistant property is needed to ensure that there is no tie: a vertex x which is not the origin has exactly one nearest neighbor which is closer to the origin. We trivially deduce that \mathcal{T} is a tree.

It is important to notice that the construction of the tree is local and that it does not minimize any global functional as do the Minimal Spanning Tree or the trees analyzed by Howard and Newman in [13].

In this paper we will consider only point sets in the plane \mathbb{R}^2 . All the results extend to higher dimension. If not otherwise specified, the norm $|\bullet|$ will be the Euclidean norm. We consider an orthonormal basis $(0, e_x, e_y)$.

Consider now some homogeneous Poisson point process N on the plane, with intensity $\lambda > 0$ and in its Palm version: almost surely (a.s.) $0 \in N$. Since the Poisson point process is a.s. non equidistant, we can a.s. generate the RST \mathcal{T} of N .

An instance of such RST is given in Figure 1.

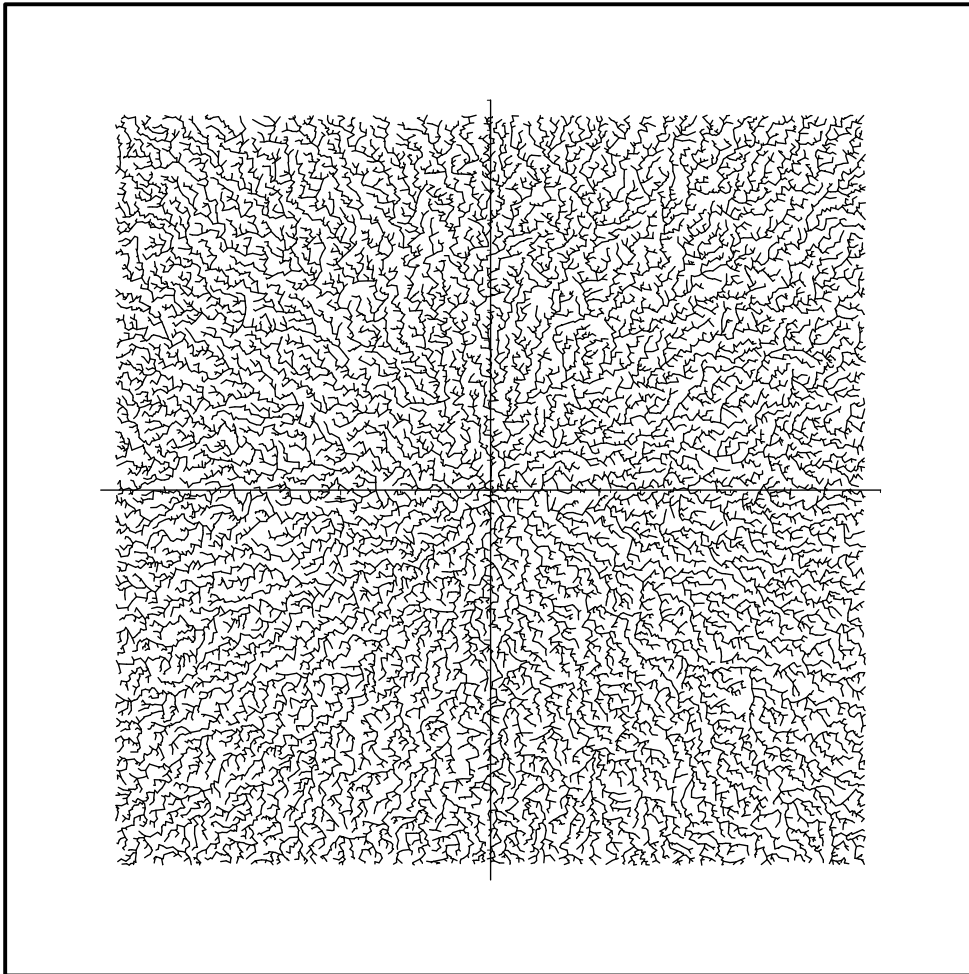


Figure 1: Radial spanning tree of 25000 points uniformly and independently distributed in the unit square.

Since, \mathcal{T} is scale-invariant, without loss of generality, we can set $\lambda = 1$, for a general λ , all results follow by multiplying distances by $\sqrt{\lambda}$. From the invariance of the PPP by rotation, we deduce also that the law of the RST is invariant by rotation.

We now define another random graph which will be used in the analysis of the asymptotic behavior of the RST. Let $(0, e_1, e_2)$ an orthonormal basis of \mathbb{R}^2 , on a non-equidistant point set N with non accumulation, we define the *Directed Spanning Forest (DSF) with direction $-e_1$* as follows: the ancestor of $x \in N$ is the nearest point of N which has a strictly smaller e_1 -coordinate. This random graph was first introduced by Bhatt and Roy in [4] and it also holds some similarities with the Poisson forest.

2.2 Notation

1

The cardinality of set S will also be denoted by $|S|$. For all points $x \in N \setminus 0$, the ancestor of x in the tree is the nearest neighbor which is closer to the origin. It will be denoted by $\mathcal{A}(x)$ and by convention we will take $\mathcal{A}(0) = 0$. The iterate of order k of \mathcal{A} will be denoted by $\mathcal{A}^k(x)$.

We will denote by $R_0(x)$ the path from x to the origin, defined as the sequence of ancestors of x . In Section 5.1, $R_0(x)$ will also be thought of as a piecewise linear curve in \mathbb{R}^2 , namely as the union of the edges connecting the points of this sequence.

Throughout the paper, we will focus on functionals F defined on the vertices of \mathcal{T} , such as the length of the edge $(x, \mathcal{A}(x))$, its orientation etc. For any $x \in \mathbb{R}^2$, $F(x)$ is defined on the tree \mathcal{T} constructed over $N \cup \{x\}$. This definition is consistent with Slyvniak's theorem: if P is the probability measure of the Poisson point process N , the Palm measure of N with two points 0 and x is $P * \delta_x * \delta_0$. Hence a.s. $N \cup \{x\}$ is non-equidistant and $F(x)$ can be interpreted as the value of the functional F conditioned on the fact that x is a vertex of the tree.

Note also that for this type of functionals, from the isotropy of the PPP, the law of $F(x)$ depends on x only through its radius $|x|$. Consequently we will often write $F(|x|)$ instead of $F(x)$.

Several qualitative results of the present paper involve constants. For the sake of clarity, we will use C_0 to denote a positive constant to be thought of as small and C_1 to denote a positive constant to be thought of as large. The exact value of C_0 and C_1 may change from one line to the other and we could

¹A glossary of the main mathematical notation can be found at the end of the paper.

for example write : $C_0/C_1 = C_0$. The important point is that C_0 and C_1 are universal constants that will never depend on the parameters of the problem.

2.3 Summary of Results

2.3.1 Topology of the Radial Spanning Tree

We have seen that if N is a Poisson point process under its Palm version, \mathcal{T} is a.s. a tree. We will check also that this tree is a.s. locally finite (i.e. no vertex has an infinite degree).

The next step to understand the intrinsic structure of \mathcal{T} is to characterize its *ends*. An end is a semi-infinite self-avoiding path in \mathcal{T} , starting from the origin: $(0 = x_0, x_1, \dots)$. The set of ends of a tree is the set of distinct semi-infinite, self-avoiding paths (two semi-infinite paths are non distinct if they share an infinite sub-path).

A semi-infinite path $(0 = x_0, x_1, \dots)$ has an asymptotic direction if $x_n/|x_n|$ has an a.s. limit in the unit sphere S^1 .

The following theorem will be a consequence of Proposition 2.8 in [13]; it characterizes the ends of the RST:

Theorem 1 *The following set of properties holds almost surely :*

- every semi-infinite path has an asymptotic direction,
- for every $u \in S^1$, there exists at least one semi-infinite path with asymptotic direction u ,
- the set of u 's of S^1 such that there is more than one semi-infinite path with asymptotic direction u is dense in S^1 .

This theorem shows that the RST strongly differs from the minimal spanning tree. In dimension two, it has been proved that the minimal spanning tree has only one end (see [2]).

Another property of the tree of interest to us is the set of points at tree-distance less than k from the origin $\mathcal{T}(k) = \{X \in N : \mathcal{A}^k(X) = 0\}$.

Theorem 2 *There exists a constant $p > 0$, such that a.s., for all $\epsilon > 0$, for k large enough :*

$$N \cap B(0, (1 - \epsilon)kp) \subset \mathcal{T}(k) \subset B(0, (1 + \epsilon)kp). \quad (1)$$

Moreover a.s. and in L^1 :

$$\frac{|\mathcal{T}(k)|}{k^2} \rightarrow \pi p^2, \quad (2)$$

In other words, the graph-diameter of the RST generated by a Poisson Point Process inside a ball grows linearly with the number of points.

2.3.2 Geometry of the Radial Spanning Tree

In this paper, we will focus on two types of geometrical results.

The first type concerns functionals $F(x, \mathcal{T})$ which depend only on vertices around x . For example, we will give explicit formulae for the distributions of $L(x) = |x - \mathcal{A}(x)|$ (the length of the edge with the ancestor), $P(x) = |x| - |\mathcal{A}(x)|$ (the progress to the origin) and the expectations of the degree $D(x)$ of node x in the tree.

More generally, we will prove a limit theorem for a large class of functionals, called *stabilizing functionals*. This class was first introduced by [14] and it was used by Penrose and Yukich ([19], [20]); it is slightly modified here to suit to our framework. Roughly speaking, $F(x, \mathcal{T})$ stabilizes \mathcal{T} if the value at x depends only a small number of vertices around x .

Since \mathcal{T} depends only on the point set N , with an abuse of notation, we can write equivalently $F(x, N)$ or $F(x, \mathcal{T})$ to make the dependence on N explicit.

Definition 1 *Let $F(x, N)$ be a measurable \mathbb{R}_+ -valued function defined on the vertices of a random graph $G = (N, E)$.*

F stabilizes G if for all x there exists an a.s. finite random variable $R(x) > 0$ such that $F(x, N \cap B(x, R(x)) \cup N') = F(x, N)$ for any locally finite point set $N' \subset \mathbb{R}^2 \setminus B(x, R(x))$ and the distribution of $R(x)$ does not depend on x .

We will prove the following theorem where \mathcal{T}_d denotes the DSF with direction $-e_x$:

Theorem 3 *Let F be a stabilizing functional for \mathcal{T}_d . As x tends to infinity, the distribution of $F(xe_x, \mathcal{T})$ converges in total variation toward the distribution of $F(0, \mathcal{T}_d)$.*

This theorem has to be related to the convergence of geometric graphs as it is defined for the Objective Method (refer to [1]).

The second class of geometrical results is of different nature: it concerns the path $R_0(x)$ from x to the origin. The simplest result bears on $H(x)$, the generation of x in the RST, that is the cardinal of $R_0(x)$. Let $X_0 = x, \dots, X_{H(x)} = 0$ be the sequence of points of N in $R_0(x)$. Along the line of [13], it is interesting to look at $\sum_{k=0}^{H(x)-1} |X_{k+1} - X_k|^\alpha$, with $\alpha > 0$. More generally, we will prove :

Theorem 4 *Let p be the constant in Theorem 2. There exists a probability measure π on \mathbb{R} such that if $g(x)$ is a measurable function from \mathbb{R}^2 to \mathbb{R} , $|g(x)| \leq \max(C_1, |x|^\alpha)$ for some $\alpha > 0$, then a.s.:*

$$\lim_{x \rightarrow +\infty} \frac{H(x)}{x} = \frac{1}{p} \quad \text{and} \quad \lim_{x \rightarrow +\infty} \frac{1}{H(x)} \sum_{k=1}^{H(x)} g([X_{k-1} - X_k]_{X_{k-1}}) = \pi(g),$$

where $[u]_v$ is the vector u rotated by an angle $-\theta$ and $v = r \cos \theta . e_x + r \sin \theta . e_y$ ($[u]_v$ is the vector u expressed in the local coordinates of v).

If g is continuous, we also have a.s.:

$$\lim_{x \rightarrow +\infty} \frac{1}{H(x)} \sum_{k=1}^{H(x)} g(X_{k-1} - X_k) = \pi(g)$$

We prove in Section 4 that the probability measure π can be interpreted as the stationary measure on the infinite edge process in the DSF. Theorem 4 is a law of large numbers and π can be understood as the limit probability measure of an edge conditioned on being on an semi-infinite path.

Theorems 3 and 4 are of different nature. In particular the mean of $L(x)$ is different from the average of the lengths of the edges along the path $R_0(x)$. The paradox vanishes if we understand that being on a long path is a bias. We will discuss this point in the scope of a more precise result in Section 6.

3 Local Properties of the Radial Spanning Tree

3.1 Distribution of the Length of Edges

Let $X \in \mathbb{R}^2$ and $L(X) = |X - \mathcal{A}(X)|$. Let $0 \leq r < |X|$, we get :

$$\begin{aligned} P(L(X) \geq r) &= \mathbf{1}(r \leq |X|)P(N(B(X, r) \cap B(0, |X|) = 0)) \\ &= \mathbf{1}(r \leq |X|)e^{-M(|X|, r)}, \end{aligned} \quad (3)$$

where $M(x, r)$ is the volume of the lune of the right part of Figure 2. Using the formula for the surface depicted by the left figure of Figure 2, we get that :

$$M(x, r) = x^2\left(\phi - \frac{\sin(2\phi)}{2}\right) + r^2\left(\frac{\pi}{2} - \frac{\phi}{2} - \frac{\sin(\phi)}{2}\right), \quad (4)$$

with

$$\phi = 2 \arcsin \frac{r}{2x}.$$

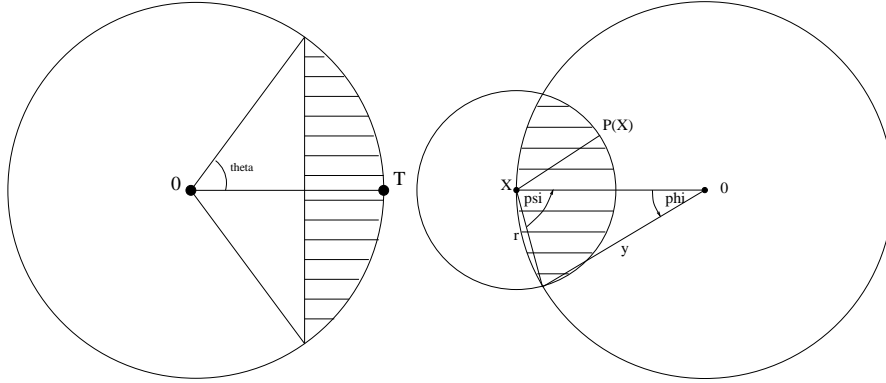


Figure 2: Left : the surface of the dashed lens is equal to $\frac{|T|^2}{2}|2\theta - \sin 2\theta|$. Right : the dashed lune.

With our notation, for $x > 0$, we define : $L(x) = L((x, 0))$. $L(x)$ has a density on $(0, x)$ equal to

$$\frac{d}{dr}M(x, r)e^{-M(x, r)}$$

and a mass at x equal to

$$e^{-M(x,x)} = e^{-x^2(2\pi/3 - \sin(2\pi/3))} = e^{-x^2(2\pi/3 - \sqrt{3}/2)}. \quad (5)$$

Notice that the distribution function of $L(x)$ is not stochastically monotone in x . Its mean $E(L(x))$ which is plotted in Figure 3, is not monotone in x either.

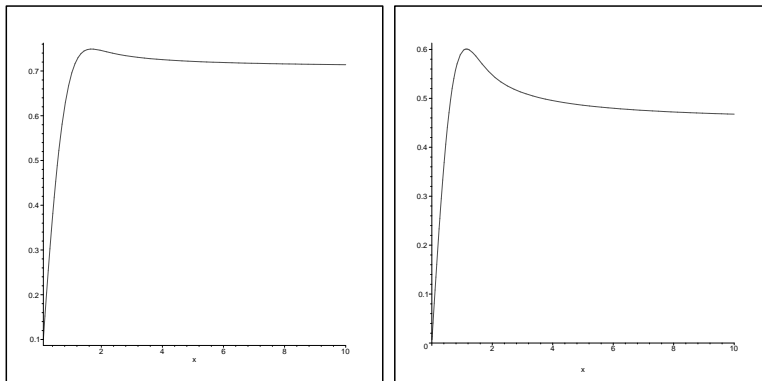


Figure 3: Left: Mean of $L(x)$ in function of x . Right: Mean of $P(x)$ in function of x .

Remark 1 In Appendix §8.1, we also consider the distribution of $L(X_n)$ when we number the points of N by their a.s. increasing radius.

3.2 Distribution of Progress

Given $L(X) = r < |X|$, consider the angle $\theta(X)$ of the edge from X to $\mathcal{A}(X)$ in the tree. Using the property of the right part of Figure 2 that $\psi = \pi/2 - \phi/2$, we get that $\theta(X)$ is uniformly distributed on the interval : $(\pi + \arg(X) - \psi, \pi + \arg(X) + \psi)$, with $\cos \psi = \sin(\phi/2) = r/(2|X|)$, that is $\psi = \arccos \frac{r}{2|X|}$. Given $L(X) = |X|$, the angle $\theta(X)$ is $\pi + \arg(X)$.

The joint distribution function of $(L(X), \theta(X))$ will be denoted by $\xi_{|X|}(dr, d\theta)$ and is equal to

$$\begin{aligned} & \mathbf{1}(r \in (0, |X|)) \frac{d}{dr} M(|X|, r) e^{-M(|X|, r)} dr \times \\ & \mathbf{1}(\theta \in (\pi + \arg(X) - \psi, \pi + \arg(X) + \psi)) \frac{d\theta}{2\psi} \\ & + \delta_{|X|}(r) \delta_{\pi + \arg(X)}(\theta) e^{-M(|X|, |X|)}. \end{aligned} \quad (6)$$

The progress is defined as $P(x) = |x| - |\mathcal{A}(x)|$. It is equal to the length of the projection of the edge $(x, \mathcal{A}(x))$ on $\overline{0x}$. The mean progress is plotted in function of x in Figure 3.

3.3 Mean Degree of a Vertex

3.3.1 Degree at the Origin

The degree of the origin is

$$D(0) = \sum_{T \in \mathcal{N} \setminus \{0\}} \mathbf{1}(N(B(T, |T|) \cap B(0, |T|) = 0).$$

Hence, using Campbell's formula, we get

$$ED(0) = 2\pi \int_0^\infty e^{-r^2(2\pi/3 - \sin(2\pi/3))} r dr = \frac{\pi}{2\pi/3 - \sqrt{3}/2} \sim 2.56. \quad (7)$$

The following property is also of interest. Similarly that the degree of a vertex in the minimal spanning tree is bounded, we have:

Lemma 1 *The degree of node 0 is bounded from above by 5 a.s.*

Proof Order the points directly attached to the origin by increasing polar angle. Let X and Y denote two neighboring points in this sequence. Assume $|0\vec{X}| < |0\vec{Y}|$. Denote by ϕ the angle between these two vectors. We have

$$|X\vec{Y}|^2 = |0\vec{X}|^2 + |0\vec{Y}|^2 - 2|0\vec{X}||0\vec{Y}| \cos \phi.$$

Since Y is attached to the origin, necessarily $|\vec{X}\vec{Y}|^2 > |\vec{0}\vec{Y}|^2$, which implies that

$$2|0\vec{X}||0\vec{Y}|\cos\phi < |0\vec{X}|^2.$$

Using now the assumption that $|0\vec{X}| < |0\vec{Y}|$, we get $\cos\phi < 1/2$. Hence $|\phi| > \pi/3$. \square

3.3.2 Degree outside the Origin

The degree of a vertex $X \neq 0$ is given by :

$$D(X) = 1 + \sum_{T \in \mathcal{N}} \mathbf{1}(|T| \geq |X|) \mathbf{1}(N(B(T, |X - T|) \cap B(0, |T|) = \emptyset) \mathbf{1}(0 \notin B(T, |X - T|)). \tag{8}$$

Indeed, a point T of modulus larger than $|X|$ shares an edge with X if and only if there is no point of smaller modulus closer from T than X .

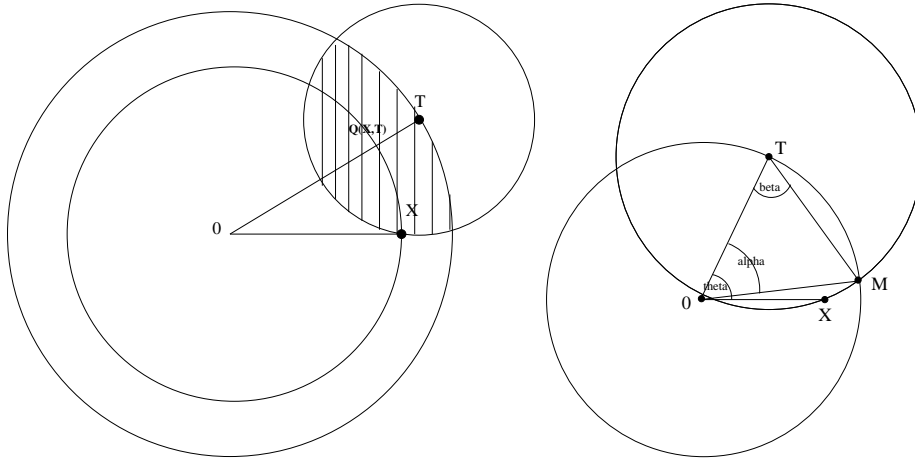


Figure 4: Left : $Q(t, \rho, \theta)$. Right : The α and β angles.

Let $X \neq 0$ and $|X| = x$, using Campbell's formula while taking the expectation of Equation (8),

$$\begin{aligned} ED(x) &= 1 + E \sum_{T \in N} \mathbf{1}(N(B(T, |X - T|) \cap B(0, |T|) = 0) \\ &\quad \mathbf{1}(x \leq |T|) \mathbf{1}(|T| > |X - T|) \\ &= 1 + \int_{\rho > x} \int_{-\arccos(\frac{x}{2\rho})}^{\arccos(\frac{x}{2\rho})} e^{-Q(x, \rho, \theta)} \rho d\rho d\theta, \end{aligned}$$

where $Q(x, \rho, \theta)$ is the dashed surface in Figure 4 for $X = (x, 0)$ and $T = (\rho, \theta)$. The condition that $|T| > |X - T|$ (or equivalently that θ belongs to the interval $(-\arccos(\frac{x}{2\rho}), \arccos(\frac{x}{2\rho}))$) translates the fact that the origin should not be contained in this lune. Hence

$$ED(x) = 1 + \int_{\rho > x} \int_{-\arccos(\frac{x}{2\rho})}^{\arccos(\frac{x}{2\rho})} e^{-\frac{\rho^2}{2}|2\alpha - \sin 2\alpha|} e^{-\frac{\rho^2 + x^2 - 2\rho x \cos \theta}{2}|2\beta - \sin 2\beta|} \rho d\rho d\theta,$$

where α and β are the angles depicted in Figure 4.

If $u = \frac{\rho}{x}$, we have : $\cos \alpha = (1 - u^{-2})/2 + u^{-1} \cos \theta$ and $\beta = (\pi - \alpha)/2$. Finally,

$$\begin{aligned} ED(x) &= 1 + 2x^2 \int_{u > 1} \int_0^{\arccos(\frac{1}{2u})} e^{-\frac{u^2 x^2}{2}(2\alpha - \sin 2\alpha)} \\ &\quad e^{-\frac{x^2}{2}(1 + u^2 - 2u \cos \theta)(\pi - \alpha - \sin \alpha)} u du d\theta. \end{aligned} \quad (9)$$

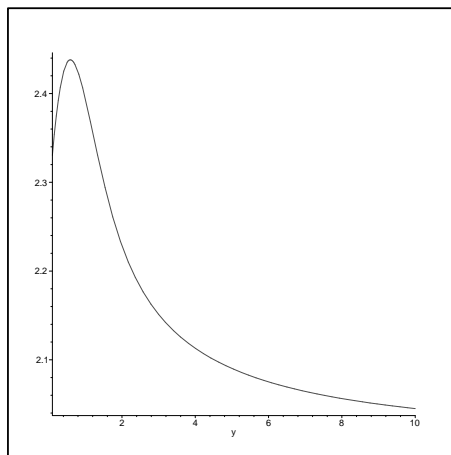
The mean degree is plotted in Figure 5.

The following lemma is remarkable in view of Lemma 1.

Lemma 2 *The degree of a node of the DSF is not bounded and in the RST a.s.*

$$\sup_{x \in N} D(x) = +\infty.$$

Proof Let $\mathcal{A}_d(x)$ be the ancestor of x in the DSF with direction $-e_x$. The DSF built on the point set $\{X_n = (2^{-n}, 3^n), n \in \mathbb{N}\} \cup \{0\}$ gives: for all n , $\mathcal{A}_d(X_n) = 0$, in particular the degree of the origin is infinite.

Figure 5: $ED(x)$ as function of $x > 0$.

We now prove the second statement of the lemma.

Let $M \in \mathbb{N}^*$; for $n \geq 0$, we define $\mathbb{U}_n = [2^{-n} - \epsilon, 2^{-n} + \epsilon] \times [3^n - \epsilon, 3^n + \epsilon]$, $\mathbb{U}_{-1} = [-\epsilon, \epsilon] \times [-\epsilon, \epsilon]$, $A_M = B(0, 4^M) \setminus (\cup_{-1 \leq n \leq M} \mathbb{U}_n)$ and $E_M(X) = \{N(X + A_M) = 0, N(X + \mathbb{U}_n) = 1, -1 \leq n \leq M\}$. We have $P(E_M(X)) = \delta > 0$ and if $|X - Y| > 2.4^M$, $E_M(X)$ and $E_M(Y)$ are independent (for ϵ is small enough).

For ϵ small enough, if $E_M(X)$ occurs, the point in $\mathbb{U}_{-1}(X)$ has degree at least M in \mathcal{T}_d . Similarly for the RST, if $|X|$ is large enough and if $E_M(X)$ occurs, the point in $\mathbb{U}_{-1}(X)$ has degree at least M in \mathcal{T} .

Using the independence of the events $E_M(2k4^M e_x)$, $k \in \mathbb{N}$, we deduce that these events appear infinitely often and this concludes the proof. \square

3.4 Limit Distribution of an Edge Length

A direct computation gives:

$$\lim_{x \rightarrow +\infty} P(L(x) \geq r) = \exp\left(-\frac{\pi r^2}{2}\right). \quad (10)$$

In particular,

$$\lim_{x \rightarrow +\infty} E[L(x)] = \int_0^\infty e^{-\frac{\pi r^2}{2}} dr = \frac{1}{\sqrt{2}}. \quad (11)$$

By similar arguments, the asymptotic progress has for Laplace transform

$$\begin{aligned} \lim_{x \rightarrow +\infty} E(e^{-sP(x)}) &= \frac{1}{\pi} \int_{r=0}^{\infty} \int_{\theta=-\pi/2}^{\pi/2} e^{-sr \cos \theta} \exp\left(-\frac{\pi r^2}{2}\right) \pi r dr d\theta \\ &= \int_{r=0}^{\infty} \int_{\theta=-\pi/2}^{\pi/2} e^{-sr \cos \theta} \exp\left(-\frac{\pi r^2}{2}\right) r dr d\theta. \end{aligned} \quad (12)$$

In particular, the mean asymptotic progress is

$$\lim_{x \rightarrow +\infty} E(P(x)) = \frac{1}{\pi} \int_{r=0}^{\infty} \int_{\theta=-\pi/2}^{\pi/2} \exp\left(-\frac{\pi r^2}{2}\right) \cos \theta dr d\theta = \frac{\sqrt{2}}{\pi}. \quad (13)$$

L and P are distributed as the length of the edge $(0, \mathcal{A}(0))$ and its x coordinate in the DSF. This result is contained in Theorem 3 that we will prove in §3.6.

With the same limit reasoning, for the degree, we get:

$$\begin{aligned} \lim_{x \rightarrow +\infty} ED(x) &= 1 + \int_{Half-Plane} \exp\left(-\frac{\pi |X|^2}{2}\right) dX \\ &= 1 + \int_{-\pi/2}^{\pi/2} \int_0^{+\infty} \exp\left(-\frac{\pi r^2}{2}\right) r dr d\theta \\ &= 2. \end{aligned}$$

3.5 Expectation of the Number of Crossing Edges

Let $x > 0$ and $C(x)$ be the number of edges connecting a vertex inside $B(0, x)$ and a vertex outside. Almost surely, we can sort the points of N by increasing norm $0 = |T_0| < |T_1| < \dots$. We have :

$$C(|T_{n+1}|) = C(|T_n|) + D(T_{n+1}) - 2.$$

It follows that :

$$C(x) = D(0) + \sum_{|T_k| \leq x} (D(T_k) - 2).$$

Taking expectation, we deduce from Campbell's formula that

$$EC(x) = ED(0) + 2\pi \int_0^x (ED(t) - 2)tdt,$$

In §3.4, we proved that $\lim_{x \rightarrow +\infty} ED(x) = 2$ and $ED(x) \geq 2$. Hence the evaluation of the asymptotic behavior of $EC(x)$ requires that of $c = -\lim_{x \rightarrow +\infty} x^2 ED(x)'$. We would then deduce: $\lim_{x \rightarrow +\infty} EC(x)/x = c$. The exact computation of c is beyond the scope of this paper.

Let γ be an arc on the circle of radius r and center 0 and let $C(r, \gamma)$ be the counting measure of the number of edges crossing γ . From the invariance by rotations of the PPP, we deduce that $EC(r, \gamma) = l(\gamma) \frac{EC(r)}{2\pi r}$, where $l(\gamma)$ is the length of the arc. In other words, the point process of edge crossings on the circle of radius r is stationary and with intensity $\mu(r) = \frac{EC(r)}{2\pi r}$.

3.6 Proof of Theorem 3

Let $X \in \mathbb{R}^2 \setminus \{0\}$ and $\mathcal{A}_d(X)$ be the ancestor of X in \mathcal{T}_d with direction $-e_1$ (a given vector). We define θ as the angle between e_1 and X . The next lemma compares $\mathcal{A}(X)$ with $\mathcal{A}_d(X)$ if we build \mathcal{T} and \mathcal{T}_d (with direction $-e_1$) on the same PPP.

Lemma 3 *Let $X \in \mathbb{R}^2 \setminus \{0\}$, there exists C_1 such that*

$$P(\mathcal{A}(X) \neq \mathcal{A}_d(X)) \leq 1 \wedge C_1(1/|X| + \theta).$$

Proof

Without loss of generality we suppose $X = xe_x$, $x > 0$ and $\theta > 0$. The sets $L(X, e_1)$ and $K(X, e_1)$ are depicted in Figure 6. We note that if $\mathcal{A}_d(X) \notin K(X, e_1)$ and $\mathcal{A}(X) \notin L(X, e_1) \cup \{0\}$, then $\mathcal{A}_d(X) = \mathcal{A}(X)$ and hence

$$\begin{aligned} P(\mathcal{A}_d(X) \neq \mathcal{A}(X)) &\leq P(\mathcal{A}_d(X) \in K(X, e_1)) \\ &\quad + P(\mathcal{A}(X) \in L(X, e_1)) + P(\mathcal{A}(X) = 0). \end{aligned}$$

The last term is easily computed : $P(\mathcal{A}(X) = 0) = e^{-M(x,x)}$.

To upper bound the second term, we notice that $L(X, e_1)$ is contained in a cone of angle θ (see Figure 6); hence $P(\mathcal{A}(X) \in L(X, e_1)) \leq \theta/\pi$.

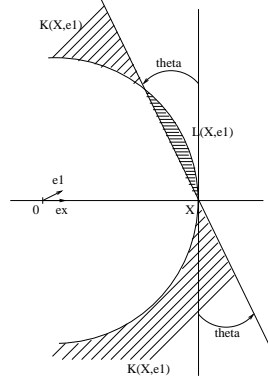


Figure 6: The sets $L(X, e_1)$ and $K(X, e_1)$.

The first term is upper bounded similarly. Let $K_-(X, e_1)$ be the lower part of $K(X, e_1)$; we have

$$\begin{aligned}
 P(\mathcal{A}_d(X) \in K(X, e_1)) &\leq 2 P(\mathcal{A}_d(X) \in K_-(X, e_1)) \\
 &\leq \int_0^\infty 2\pi r e^{-\pi r^2} (\arcsin(\frac{r}{2x}) + \theta) dr \\
 &\leq C_1(1/x + \theta).
 \end{aligned}$$

□

We now prove Theorem 3. Without loss of generality, we can suppose that $X = xe_x$, $x > 0$. We build \mathcal{T} and \mathcal{T}_d on the same PPP. For all $r > 0$, we define the event $J_r(X) = \{\mathcal{T} \cap B(X, r) = \mathcal{T}_d \cap B(X, r)\}$. Let F be a stabilizing functional for \mathcal{T}_d . Using the terminology of Definition 1, we have:

$$\begin{aligned}
 P(F(X, \mathcal{T}) \neq F(X, \mathcal{T}_d)) &\leq P(J_{R(X)}(x)^c) \\
 &\leq P(R(X) > r) + P(J_r(x)^c) \\
 &\leq P(R > r) + P(\cup_{T \in N \cap B(x, r)} \mathcal{A}(T) \neq \mathcal{A}_d(T)) \\
 &\leq P(R > r) + P(N(B(x, r)) \geq n) \\
 &\quad + nC_1(r/(x-r) + 1/(x-r)),
 \end{aligned}$$

where we have used Lemma 3.

For $\eta > 0$, we fix r such that $P(R > r) \leq \eta$. Note also that $P(N(B(x, r)) > n) \leq \exp(-n \ln \frac{n}{e\pi r^2})$ (Lemma 11.1.1. of [23]). Hence taking, $n = \lfloor x^\alpha \rfloor$ for some $0 < \alpha < 1$, we deduce that

$$\limsup_x P(F(x, \mathcal{T}) \neq F(x, \mathcal{T}_d)) \leq \eta,$$

and it follows $\lim_x P(F(X, \mathcal{T}) \neq F(X, \mathcal{T}_d)) = 0$.

To complete the proof, notice that \mathcal{T}_d is stationary: $F(x, \mathcal{T}_d)$ and $F(0, \mathcal{T}_d)$ have the same distribution. \square

Remark 2 It is easy to check that the vector $(L(X), \theta(X))$ (and hence the progress $P(X)$), or the degree $D(X)$ are stabilizing functional for \mathcal{T}_d . So are the first k segments of the path from X to the origin in the DSF, for all finite k , or the subtree of the DSF rooted in X and of depth k .

4 The Directed Path

The directed spanning forest is the key tool for the asymptotic analysis of the RST. This section is dedicated to the analysis of the paths originating from some node. A path made of 20000 hops is depicted in Figure 7.

4.1 The Underlying Markov Chain

We denote by T_0, T_1, \dots, T_n the sequence of the successive ancestors of point T_0 in the DSF with respect to the direction $-e_x$. The edge between T_i and T_{i-1} is $U_i = T_{i-1} - T_i$. Let $U_0 = -T_0$. From the definition of the tree, the x -coordinate of U_i is positive (almost-surely) and we have:

$$T_n = - \sum_{l=0}^n U_l \text{ and } T_n - T_k = - \sum_{l=k+1}^n U_l \text{ for } k < n.$$

The conditional probability of U_{n+1} given (U_0, \dots, U_n) can be analytically determined. Indeed let \mathcal{H} be the half-plane $(x > 0)$, $D_0 = \mathcal{H}$ and let

$$D_n = \mathcal{H} \cap \left\{ \bigcup_{k=0}^{n-1} B(T_n - T_k, |U_{k+1}|) \right\}^c \tag{14}$$

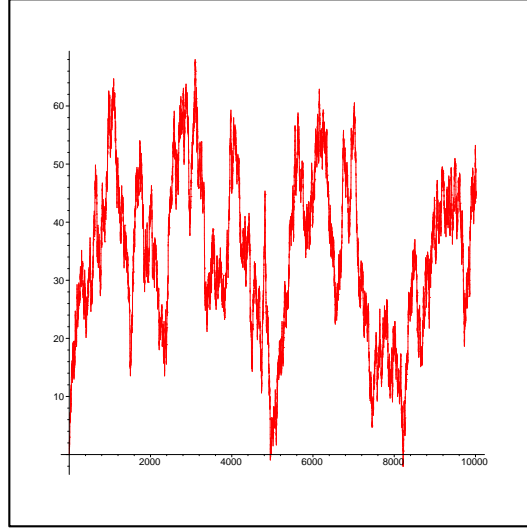


Figure 7: A directed path.

(see Figure 10). Given (U_0, \dots, U_n) , U_{n+1} admits the following density in polar coordinates:

$$\frac{d}{dr} |B(0, r) \cap D_n| e^{-|B(0, r) \cap D_n|} \frac{\mathbf{1}_{(r, \theta) \in D_n} r dr d\theta}{\nu_1(C(0, r) \cap D_n)}, \quad (15)$$

where ν_1 denotes the 1-dimensional Lebesgue measure and $C(T, r)$ the circle of radius r and center T .

Let D_n be the set given by Equation (14) for some fixed nodes T_0, \dots, T_n . The following two lemmas will have important applications.

Lemma 4 *Let (r_n, θ_n) denote the coordinates of U_n . Then for all $0 < \alpha < \pi/2$,*

$$P(|\theta_n| < \alpha \mid D_{n-1}, r_n) \geq \frac{\alpha}{\pi}.$$

For $-\pi/2 \leq \alpha \leq \beta \leq \pi/2$, if the cone $\{(r, \theta); \theta \in [\alpha, \beta]\}$ is included in D_{n-1} , then

$$P(\theta_n \in [\alpha, \beta] \mid D_{n-1}, r_n) \geq \frac{\beta - \alpha}{\pi}.$$

Proof Fix r , in view of the geometry of D_n ,

$$d_{n-1}(r) = \{\theta \in (-\frac{\pi}{2}, \frac{\pi}{2}) : (r, \theta) \in D_{n-1}\} = (-\theta_-(r), \theta_+(r)),$$

with $0 < \theta_{\pm} \leq \frac{\pi}{2}$.

From Equation (15), for a fixed r , the pdf of θ_1 conditioned on $r_n = r$ is uniform on $(-\theta_-(r), \theta_+(r))$. If $\theta_- < \alpha$ and $\theta_+ < \alpha$, then $P(|\theta_n| < \alpha \mid r_n = r, D_{n-1}) = 1$; else, supposing for example $\theta_+ \geq \alpha$, then

$$\begin{aligned} P(|\theta_n| < \alpha \mid r_n = r, D_{n-1}) &\geq P(0 < \theta_n < \alpha \mid r_n = r, D_{n-1}) \\ &\geq \frac{\alpha}{\theta_+ + \theta_-} \geq \frac{\alpha}{\pi}. \end{aligned}$$

The proof of the second assertion is similar. □

Define the cones

$$\begin{aligned} c_{\alpha} &= \{x = (r, \theta) \in \mathbb{R}^2 : \theta \in [0, \alpha)\}, \text{ for } \alpha > 0 \\ c_{\alpha} &= \{x = (r, \theta) \in \mathbb{R}^2 : \theta \in (\alpha, 0]\}, \text{ for } \alpha < 0. \end{aligned}$$

Lemma 5 For all n ,

$$c_{\frac{\pi}{6}} \subset D_n \quad \text{or} \quad c_{-\frac{\pi}{6}} \subset D_n.$$

In particular if (r_n, θ_n) denote the coordinates of U_n , then

$$P(r_n \geq u \mid T_{n-1}, T_{n-2}, \dots, T_0) \leq e^{-\frac{\pi u^2}{12}}.$$

Proof The proof relies on a simple geometrical argument. Suppose first $n = 2$ and consider a circle C_2 of radius r_2 and center 0 (set to be T_1) and another circle C_1 of radius r_1 and center T_0 , $0 \in C_1$. In polar coordinates, T_0 is at (r_1, θ_1) and T_2 at (θ_2, r_2) . For $|\theta_2 - \theta_1| \leq \frac{\pi}{2}$, the equation of C_1 in polar coordinates is $r = 2r_1 \cos(\theta - \theta_1)$ (see Figure 8). The point T_2 is somewhere on C_2 ; suppose for example that it is in the orthant $\theta_2 \in [-\frac{\pi}{2}, 0]$. If $\theta_1 \notin [-\pi, -\frac{\pi}{2}]$ or $r_1 \geq 2r_2 \cos \theta_1$, then D_2 contains $c_{\frac{\pi}{2}}$.

Suppose instead $\theta_1 \in [-\pi, -\frac{\pi}{2}]$ and $r_1 \leq 2r_2 \cos \theta_1$ (see Figure 8). We have to prove that the largest cone with origin T_2 contained in D_2 contains $c_{\frac{\pi}{6}}$ or $c_{-\frac{\pi}{6}}$.

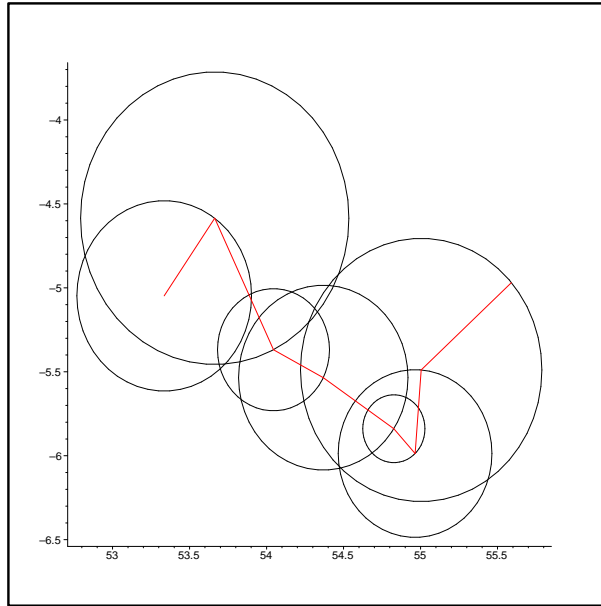


Figure 9: A sample path and the associated discs.

The projection of $\mathcal{H} \setminus D_{\tau_0} = \mathcal{H} \cap \{B(T_1 - T_0, |U_1|)\}$ on the x -axis is $\xi_1 = L_0 - P_0$. More generally, denote by ξ_n the projection of $\mathcal{H} \setminus D_n = \mathcal{H} \cap \{\bigcup_{k=0}^{n-1} B(T_n - T_k, |U_{k+1}|)\}$ on the x -axis. This sequence satisfies the recurrence relation

$$\xi_{n+1} = \max(\xi_n - P_n, L_n - P_n), \quad n \geq 1, \quad (17)$$

so that for all $n \geq 1$,

$$\xi_n = \max_{1 \leq i \leq n} (L_{i-1} - \sum_{k=i-1}^{n-1} P_k).$$

and the markovian time τ_1 is then simply rewritten as:

$$\tau_1 = \inf\{m > 1 : P_m \geq \xi_m\}.$$

For instance, on the realization of Figure 10, $\tau_1 = 4$.

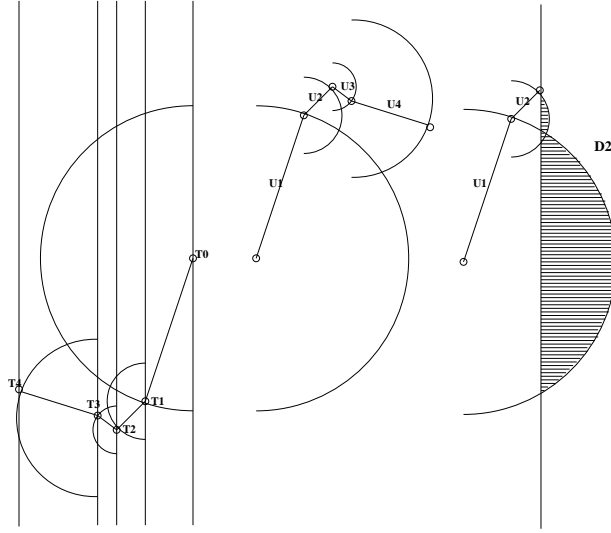


Figure 10: The process T_0, T_1, \dots, T_n , the associated U_1, \dots, U_n and in dashed $\mathcal{H} \setminus D_2$.

Lemma 6 For all $m \geq 1$,

$$P(\tau_m - \tau_{m-1} > n \mid D_{\tau_0}) \leq C_1 e^{-C_0 n} \quad \text{and} \quad P(\tau_m > \beta m \mid D_{\tau_0}) \leq C_1 e^{-C_0 m},$$

for some positive constants β, C_0, C_1 (depending on D_{τ_0}), so that in particular τ_m is a.s. finite.

Proof This result follows from the statement of Lemma 15 (in Appendix). We explain the connection between the setting Lemma 15 and the current setting in the particular case $m = 0$.

We first show that for all n , the random variable ξ_n defined in (17) is bounded from above by $\tilde{\xi}_n$, where $\tilde{\xi}_n$ is the maximal residual service time just before the n -th arrival in a GI/GI/ ∞ queue with i.i.d. service times $\{\tilde{L}_n\}$ and i.i.d. inter-arrival times $\{\tilde{P}_n\}$ where:

- \tilde{L}_i is the distance from T_i to the closest point in the cone (either $c_{\frac{\pi}{6}}$ and $c_{-\frac{\pi}{6}}$) that is fully included in D_i if there is only one such cone. If both $c_{\frac{\pi}{6}}$ and $c_{-\frac{\pi}{6}}$ are included in D_i , then one selects one of them at random;

- \tilde{P}_i is defined as follows: one samples an independent Poisson point process N' of intensity 1 and one picks the point of

$$((N \cap D_i) \cup (N' \cap D_i^c \cap \mathcal{H})) \cap B(T_i, \tilde{L}_i)$$

which has the smallest progress from T_i .

Since for all i , $L_i \leq \tilde{L}_i$ and $P_i \geq \tilde{P}_i$ a.s. an immediate induction gives $\xi_i \leq \tilde{\xi}_i$ a.s., where $\tilde{\xi}_i$ is defined by the same recursion but with \tilde{L}_i and \tilde{P}_i in place of L_i and P_i . This recursion is that of the maximal residual service time just before the arrivals in a GI/GI/ ∞ queue.

Using a Loynes type argument, the sequence $\{\tilde{\xi}_i\}$ is easily seen to be stochastically monotone in i and to converge weakly to a non degenerate limit $\tilde{\xi}$ when i tends to infinity.

Pick a such that $P(\tilde{\xi} \leq a) = \eta > 0$. Let (r_n, θ_n) be the polar coordinates of U_n . In view of the remark preceding the lemma,

$$\begin{aligned} P(\tau_1 = m \mid D_0) &\geq P(\xi_m \leq a)P(r_{m+1} \cos(\theta_{m+1}) \geq a \mid D_m) \\ &\geq P(\tilde{\xi} \leq a)P(r_{m+1} \cos(\theta_{m+1}) \geq a \mid D_m). \end{aligned}$$

Let $c(r, \alpha)$ denote the set $\{(\rho, \theta) : \rho < r; |\theta| < \alpha\}$. From Lemma 4, for all sets D_m , for all $\alpha \in (0, \frac{\pi}{2})$:

$$\begin{aligned} P(r_{m+1} \cos \theta_{m+1} \geq a \mid D_m) &\geq P(r_{m+1} \cos \theta_{m+1} \geq a; |\theta_n| < \alpha \mid D_m) \\ &\geq \frac{\alpha}{\pi} e^{-\nu_2(c(\frac{a}{\cos \alpha}, \alpha) \cap D_m)} \\ &\geq \frac{\alpha}{\pi} e^{-\frac{a^2 \alpha}{\cos^2 \alpha}} = \mu > 0. \end{aligned}$$

Let

$$\tilde{\tau}_1 = \inf\{m > 1 : \tilde{P}_m \geq \tilde{\xi}_m\}.$$

Since $\tau_1 \leq \tilde{\tau}_1$, in order to prove the finiteness of τ_1 (or the exponential bound on the tail of its law), it is enough to prove this property on $\tilde{\tau}_1$. □

For $n \geq 1$, we define the path between two successive stopping times as the point process :

$$\Phi_n = \{0, T_{\tau_{n-1}} - T_{\tau_{n-1}+1}, \dots, T_{\tau_{n-1}} - T_{\tau_n}\} \quad (18)$$

and we define $\Phi_0 = \{0, T_0 - T_1\}$. From Lemma 6, for all n , Φ_n is a finite point process on $\mathcal{X} = \mathbb{R}_+ \times \mathbb{R}$. We endow the set $\mathcal{N}_{\mathcal{X}}$ of finite point processes on \mathcal{X} with the usual weak topology, $(\mathcal{N}_{\mathcal{X}}, \mathcal{B}(\mathcal{N}_{\mathcal{X}}))$, making a complete metric space (see [5] for details).

Theorem 5 $\{\Phi_n\}, n \in \mathbb{N}$, is a positive and uniformly ergodic Harris chain.

The proof is organized in several steps. All definitions on Markov Chains are taken from [15].

Markov Property Almost surely, we may write : $\Phi_n = \{0, X_1^n, \dots, X_{N_n}^n\}$, where the x -coordinates of the X_i^n are increasing. By the definition of τ_n , for all n , we have :

$$D_{\tau_n} = \mathcal{H} \cap B(-U_{\tau_n}, |U_{\tau_n}|)^c.$$

It follows from Equation (15) that the law of $U_{\tau_{n+1}} = X_1^n$ depends on Φ_0, \dots, Φ_n only through $U_{\tau_n} = T_{\tau_{n-1}} - T_{\tau_n}$.

More generally, since $\mathcal{H} \cap B(T_n - T_k, |U_{k+1}|) = \emptyset$ implies $\mathcal{H} \cap B(T_m - T_k, |U_{k+1}|) = \emptyset$ for $m \geq n$, it follows that for all $m \geq \tau_n$,

$$D_m = \mathcal{H} \cap \left\{ \bigcup_{k=\tau_n-1}^{m-1} B(T_m - T_k, |U_{k+1}|) \right\}^c,$$

which depends only on U_{τ_n}, \dots, U_m . In particular, for all n ,

$$P(\Phi_{n+1} \in \bullet | \Phi_0, \dots, \Phi_n) = P(\Phi_{n+1} \in \bullet | U_{\tau_n}) = P(\Phi_{n+1} \in \bullet | \Phi_n),$$

since U_{τ_n} is a functional of Φ_n only, which completes the proof of the Markov Property.

In what follows, it will be useful to consider more general initial conditions than the two-point Φ_0 defined above. Any finite point process Φ on \mathcal{X} with $\Phi = \{0, X_1^0, \dots, X_N^0\}$ and satisfying the constraint

$$D_N = \mathcal{H} \cap B(-U_N, |U_N|)^c$$

is an acceptable initial condition when taking $\tau_0 = N$. A special case is that where $\Phi = \{0\}$ where $N = 0$ and $D_0 = \mathcal{H}$.

In what follows, for a point pattern Φ as above, we will also use the notation $X_i(\Phi)$ for the i -th point, $N(\Phi)$ for the number of points, $D(\Phi)$ for the set D_N .

As commonly done in Markov chain theory, we will denote by P_Φ the probability $P(\bullet|\Phi_0 = \Phi)$ and by P_Φ^n the probability $P(\Phi_n \in \bullet|\Phi_0 = \Phi)$, with $\Phi = \{0, X_1, \dots, X_N\}$ a finite point process satisfying the above property. In particular, P_0 (or P_0^n) will denote the probability measure of the process conditioned on $\Phi_0 = \{0\}$.

Note that P_Φ depends on Φ only through $D(\Phi)$.

Irreducibility and Aperiodicity For $A \in \mathcal{B}(\mathcal{N}_\mathcal{X})$, define :

$$\sigma_A = \min\{n \geq 1 : \Phi_n \in A\} \quad (19)$$

and

$$L(\Phi, A) = P(\sigma_A < \infty | \Phi_0 = \Phi).$$

The irreducibility of a Markov Chain on $\mathcal{N}_\mathcal{X}$ relies on the existence of a measure ν on $\mathcal{B}(\mathcal{N}_\mathcal{X})$ such that, for all A in $\mathcal{B}(\mathcal{N}_\mathcal{X})$:

$$\nu(A) > 0 \text{ implies } L(\Phi, A) > 0 \text{ for all } \Phi \in \mathcal{N}_\mathcal{X}. \quad (20)$$

For all sub σ -algebras \mathcal{G} of $\mathcal{B}(\mathcal{N}_\mathcal{X})$, let $P_\Phi^1|_{\mathcal{G}}$ denote the restriction of P_Φ^1 to \mathcal{G} .

Let \mathcal{F} denote the sub σ -algebra of $\mathcal{B}(\mathcal{N}_\mathcal{X})$ generated by the set $\{N(\Phi) = 1\} \cap \{X_1(\Phi) \in B\}$, $B \in \mathcal{O}^+$, where \mathcal{O}^+ denotes the positive orthant $\mathbb{R}_+ \times \mathbb{R}_+$. We choose ν to be $P_0^1|_{\mathcal{F}}$.

As already pointed out, P_Φ^1 depends on Φ only through $D(\Phi)$. In view of Equation (15), if $D(\Phi) \cap \mathcal{O}^+ = \mathcal{O}^+$, then $P_\Phi^1|_{\mathcal{F}}$ and $P_0^1|_{\mathcal{F}}$ are equivalent measures. So if $D(\Phi) \cap \mathcal{O}^+ = \mathcal{O}^+$ and $P_0^1(A) > 0$, for some $A \in \mathcal{F}$, we have then $P_\Phi^1(A) > 0$ so that $L(\Phi, A) > 0$.

Consider now the case where $D(\Phi) \cap \mathcal{O}^+ \neq \mathcal{O}^+$. The first point of Φ_1 is $X_1(\Phi_1) = U_{\tau_0+1}$. Let (R_1, Θ_1) be the coordinates of $X_1(\Phi_1)$. Let $(0, \xi)$ denote the projection on the x axis of the set $\mathcal{H} \setminus D(\Phi)$. From Equation (15), $P(R_1 \cos \Theta_1 > \xi, \Theta_1 > 0) > 0$. If $R_1 \cos \Theta_1 > \xi$, $\tau_0 + 1$ is a Markovian time, so that $\tau_1 = \tau_0 + 1$, and $D(\Phi_1) = \mathcal{H} \cap B(-U_{\tau_1}, |U_{\tau_1}|)^c$. If in addition $\Theta_1 > 0$, $D(\Phi_1) \cap \mathcal{O}^+ = \mathcal{O}^+$, from what precedes, for $A \in \mathcal{F}$ and such that $P_0^1(A) > 0$, then $P_\Phi^2(A) > 0$, which implies $L(\Phi, A) > 0$.

The irreducibility is thus proved. The proof of the aperiodicity is along the same lines.

Small Set A set $S \in \mathcal{B}(\mathcal{N}_{\mathcal{X}})$ is small if there exists an integer $n > 0$ and a non-trivial measure ν on $\mathcal{B}(\mathcal{N}_{\mathcal{X}})$ such that for all $A \in \mathcal{B}(\mathcal{N}_{\mathcal{X}})$

$$\inf_{\Phi \in S} P_{\Phi}^n(A) \geq \nu(A). \quad (21)$$

For $\Phi = \{0, X_1, \dots, X_{\tau(\Phi)}\}$ in $\mathcal{N}_{\mathcal{X}}$, we define $(R(\Phi), \Theta(\Phi))$ as the coordinates of $X_{\tau} - X_{\tau-1}$. For $r > 0$ and $0 < \alpha < \pi/2$, let $\mathcal{S}(r, \alpha) \in \mathcal{B}(\mathcal{N}_{\mathcal{X}})$ be defined by

$$\mathcal{S}(r, \alpha) = \{\Phi \in \mathcal{N}_{\mathcal{X}} : |\Theta(\Phi)| \leq \alpha, R(\Phi) \leq r\}. \quad (22)$$

Let \mathcal{G} denote the sub σ -algebra of $\mathcal{B}(\mathcal{N}_{\mathcal{X}})$ generated by the sets $\{\tau(\Phi) = 1\} \cap \{X_1(\Phi) \in B\}$, $B \in C_{\alpha}$, where C_{α} denotes the cone

$$C_{\alpha} = \{(r, \theta) \in \mathbb{R}^2 : \theta \in [-\pi/2 + \alpha, \pi/2 - \alpha]\}.$$

We now prove that

$$\mathcal{S} = \mathcal{S}(r, \alpha) \quad (23)$$

is a small set for $\nu = g(r, \alpha)P_0^1|_{\mathcal{G}}$ and $n = 1$, where $g(r, \alpha)$ is a positive constant to be determined below.

From Equation (15), for all $\Phi \in \mathcal{S}$,

$$\begin{aligned} P_{\Phi}(X_1(\Phi_1) \in C_{\alpha}, \tau(\Phi_1) = 1) &= P_{\Phi}(|\Theta_1| \leq \pi/2 - \alpha, R_1 \cos \Theta_1 \geq r) \\ &\geq P_0(|\Theta_1| \leq \pi/2 - \alpha, R_1 \cos \Theta_1 \geq r) \\ &\geq \frac{\pi/2 - \alpha}{\pi} e^{-\frac{r^2(\pi/2 - \alpha)}{\sin^2 \alpha}} = g(r, \alpha) > 0. \end{aligned}$$

Note also that from Equation (15), for all $B \subset \mathcal{E}$,

$$\begin{aligned} &P_{\Phi}(X_1 \in B \mid |\Theta_1| \leq \pi/2 - \alpha, R_1 \cos \Theta_1 \geq r) \\ &= P_0(X_1(\Phi_1) \in B \mid |\Theta_1| \leq \pi/2 - \alpha, R_1 \cos \Theta_1 \geq r). \end{aligned}$$

These two remarks imply that for all $A \in \mathcal{G}$

$$P_{\Phi}(\Phi_1 \in A) \geq g(r, \alpha)P_0(\Phi_1 \in A),$$

which concludes the proof.

Positivity and Uniform Ergodicity Let $\sigma_{\mathcal{S}} = \inf\{n \geq 1 : \Phi_n \in \mathcal{S}\}$ be the first return time to \mathcal{S} with \mathcal{S} defined as above.

Lemma 7 For all $r > 0$, $\mathcal{S} = \mathcal{S}(r, \pi/6)$, we have $\sup_{\Phi} E_{\Phi} \sigma_{\mathcal{S}} < \infty$. More precisely $\sup_{\Phi} P(\sigma_{\mathcal{S}} > n) \leq (1 - \delta(r))^n$, with $\delta(r) = (1 - e^{-\pi r^2/12})/6$.

Proof From Lemma 4 and Lemma 5, for all n ,

$$P(r_n \leq r, |\theta_n| \leq \frac{\pi}{6} \mid T_{n-1}, \dots, T_0) \geq \frac{1}{6}(1 - e^{-\pi r^2/12}).$$

Hence, for all Φ ,

$$P_{\Phi}(R(\Phi_1) \leq r, |\Theta(\Phi_1)| \leq \frac{\pi}{6}) \geq \frac{1}{6}(1 - e^{-\pi r^2/12}), \quad (24)$$

from which one easily deduces that $\sup_{\Phi} E_{\Phi} \sigma_{\mathcal{S}} < \infty$. \square

In view of Theorem 10.4.10 and 16.0.2 of [15], $\{\Phi_n\}$ is positive and uniformly ergodic.

4.2 Limit Theorems

We follow the approach of Athreya and Ney (see [3]). Since the Markov Chain Φ is positive Harris recurrent, we can build an increasing sequence of finite stopping times N_k (on an enlarged probability space) such that $N_0 = 0$ and

$$P_{\Phi_0}(\Phi_n \in A, N_k = n) = \mu(A)P_{\Phi_0}(N_k = n), \quad (25)$$

where μ is a probability measure on $\mathcal{N}_{\mathcal{X}}$. Therefore, $N_k - 1$ is a regenerative time : the sequences $(\Phi_{n+N_k}), n \in \mathbb{N}$, and $(\Phi_n), 0 \leq n \leq N_k - 1$, are independent.

Lemma 7 implies that $N_k - N_{k-1}$ is stochastically dominated by a geometric law. We define $\theta_k = \tau_{N_k}$ with τ_n defined in (18); since $\xi_{\theta_k} \leq r$ (with ξ_n defined in (17)), from Lemma 6, $P(\theta_{k+1} - \theta_k \geq t \mid \mathcal{F}_{\theta_k}) \leq C_1 \exp(-C_0 k)$, for some positive constants.

Finally we have :

Theorem 6 *There exists an increasing sequence of finite stopping times $\{\theta_k\}$, $k \in \mathbb{N}$, (on an enlarged probability space) such that $\theta_0 = 0$, for all $k \geq 0$, $P(\theta_{k+1} - \theta_k > n | \mathcal{F}_{\theta_k}) \leq C_1 \exp(-C_0 n)$, for some positive constants and the vectors $(U_{\theta_{k+1}}, \dots, U_{\theta_{k+1}})$, $k \in \mathbb{N}^*$ are i.i.d..*

For $\Phi = \{0, X_1, \dots, X_\tau\}$ in \mathcal{N}_X , we define $f(\Phi) = \sum_{n=1}^\tau \max(1, |X_n|^\alpha)$, $\alpha > 1$. Using the upper bounds of Lemma 6 and Lemma 5, we get

$$\sup_{x \in \mathcal{S}} E_x \left(\sum_{k=0}^{\sigma_{\mathcal{S}}-1} f(\Phi_k) \right) < \infty, \quad (26)$$

where $\sigma_{\mathcal{S}}$ is defined by Equation (19) and \mathcal{S} is the small set defined above.

Let Π be the invariant distribution of the Markov chain. We define the *invariant distribution* of the edge process $T_0 - T_1, \dots, T_{n-1} - T_n, \dots$ as :

$$\pi(A) = E_{\Pi}(\tau)^{-1} E_{\Pi} \left(\sum_{l=0}^{\tau-1} \mathbf{1}((X_{l+1} - X_l) \in A) \right), \quad A \in \mathbb{R}^2. \quad (27)$$

We may now deduce a first limit theorem.

Theorem 7 *For all measurable functions g , let $S_n = \sum_{k=0}^{n-1} g(T_{k+1} - T_k)$. If $g(x) \leq \max(C, |x|^\alpha)$ for $C > 0$, $\alpha > 0$ then a.s. :*

$$\lim_{n \rightarrow \infty} \frac{S_n}{n} = E_{\Pi}(\tau)^{-1} E_{\Pi} \left(\sum_{l=0}^{\tau-1} g(X_{l+1} - X_l) \right) = \pi(g),$$

Let $G(\Phi) = \sum_{l=0}^{\tau-1} (g(X_{l+1} - X_l) - \pi(g))$; if

$$\gamma^2 = E_{\Pi}(G(\Phi_0)^2) + 2 \sum_{k=1}^{\infty} E_{\Pi}(G(\Phi_0)G(\Phi_k)) > 0,$$

then a central limit theorem also holds :

$$\frac{1}{\gamma \sqrt{n}} (S_n - \pi(g)) \xrightarrow{d} \mathcal{N}(0, 1).$$

If $\gamma = 0$ then $\frac{1}{\sqrt{n}} (S_n - \pi(g))$ tends a.s. to 0.

This theorem characterizes the asymptotic behavior of a path in the directed spanning forest.

Proof Theorem 7 is a direct application of Theorem 17.0.1 of [15]. Theorems 14.2.3, 14.2.4 and 14.3.7 of [15] along with Equation(26) ensure that all requirements are fulfilled. \square

Corollary 8 *There exists positive constants p , p_y and for $\alpha > 0$, l_α such that*

$$\lim_{n \rightarrow \infty} \frac{1}{n} \sum_{k=0}^{n-1} \langle T_k - T_{k+1}, e_x \rangle = p_x = p, \quad (28)$$

$$\lim_{n \rightarrow \infty} \frac{1}{n} \sum_{k=0}^{n-1} |\langle T_k - T_{k+1}, e_y \rangle| = p_y, \quad (29)$$

$$\lim_{n \rightarrow \infty} \frac{1}{n} \sum_{k=0}^{n-1} |T_{k+1} - T_k|^\alpha = l_\alpha. \quad (30)$$

By simulation of 20000 hops of the chain, one obtains that $p \sim .504$, $p_y \sim .46$ and $l_1 \sim .75$. The value of p is significantly larger than the mean asymptotic progress as evaluated in (13). The latter can be seen as the expectation of the progress from point $T_0 = 0$ under the Palm probability of the Poisson point process N , whereas p is the expectation of the progress under another measure: for all n , let $P_n = |U_n \cdot e_x|$ be the progress from the n -th ancestor of point $T_0 = 0$. From the above analysis, the law of P_n under the Palm probability of N converges weakly to a limit when n tends to infinity, and p is the mean of the limit law. A similar observations holds for l_1 when compared to (11): as it is the case for progress, on a long path, the magnitude of the hop from a point to its ancestor is "boosted" by the presence of its offspring.

Note that it is also possible to derive a functional central limit theorem for the sequence $(T_k)_k$ from Theorem 17.4.4 of [15].

Remark 3 An interesting question along the line of [9] and [11] is whether the Directed Spanning Forest is almost surely a tree, namely whether two sequences of ancestors coalesce almost surely (in dimension 2 and 3). Similarly, every vertex has almost surely a finite number of successors. One can also expect that the Directed Spanning Tree converges toward the Brownian Web,

(see [24], [8], [10]). If this holds true, then the Directed Spanning Tree has only one semi-infinite path whereas in view of Theorem 1, the RST has a semi-infinite path in every direction. The edge process of successive ancestors in the RST converges in some sense toward the edge process of successive ancestors in the Directed Spanning Tree; however the two trees have a completely different topology.

4.3 Maximal Fluctuation

We end this section with a result on the deviation of the path from its mean.

Let $R(x)$ denote the path from $(x, 0)$ in the DSF with direction $-e_x$; $R(x)$ may be seen as a piecewise linear curve $(t, Y(t))_{t \leq x}$ in \mathbb{R}^2 . The maximal deviation of this curve between x' and x with $x' \leq x$ is defined as

$$D_{\max}(x, x') = d(R(x), \overline{0x}) = \sup_{t \in [x', x]} |Y(t)|. \quad (31)$$

Theorem 9 *For all $x \geq x'$, for all $\epsilon > 0$ and all integers n ,*

$$P(D_{\max}(x, x') \geq |x - x'|^{\frac{1}{2} + \epsilon}) = O(|x - x'|^{-n}).$$

This theorem is a consequence of a result on the convergence rates of the law of large numbers for sums of i.i.d. random variables.

Lemma 8 *Let $(U_n), n \in \mathbb{N}$, be an i.i.d sequence of random variables in \mathbb{R}^2 and let (X_i, Y_i) be the coordinates of U_i . Suppose that $EX_1 > 0$, $EY_1 = 0$ and $E|U_1|^n < \infty$ for all n .*

Let $t > 0$ and $T_n = \sum_{k=1}^n U_k$. We define :

$$K_t = \inf\{n : \sum_{i=1}^n X_i \geq t\} \quad \text{and} \quad M_t = \sup_{1 \leq k \leq K_t} \left| \sum_{i=1}^k Y_i \right|.$$

Then for all $\epsilon > 0$ and all integers n ,

$$P(M_t \geq t^{\frac{1}{2} + \epsilon}) = O(t^{-n}).$$

Proof Let $c < EX_1$, $P(K_t \geq \frac{t}{c}) = P(\sum_{i=1}^{\lfloor \frac{t}{c} \rfloor} X_i \geq t) = O(t^{-n})$, from Theorem 3.1 of [12]. Similarly from the same theorem,

$$P\left(\sup_{1 \leq k \leq \lfloor \frac{t}{c} \rfloor} \left| \sum_{i=1}^k Y_i \right| \geq t^{\frac{1}{2} + \epsilon}\right) = O(t^{-n}).$$

The lemma follows from

$$P(M_t \geq t^{\frac{1}{2} + \epsilon}) \leq P(K_t \geq \frac{t}{c}) + P\left(\sup_{1 \leq k \leq \lfloor \frac{t}{c} \rfloor} \left| \sum_{i=1}^k Y_i \right| \geq t^{\frac{1}{2} + \epsilon}\right).$$

□

Proof of Theorem 9 The n^{th} ancestor of $T_0 = (x, 0)$ is T_n ; let $S_n = T_n - x = -\sum_{k=1}^n U_k$ and if (X_i, Y_i) denotes the coordinates of U_i , let :

$$K_{x-x'} = \inf\left\{n : \sum_{i=1}^n X_i \geq x - x'\right\} \quad \text{and} \quad M_{x-x'} = \sup_{1 \leq k \leq K_{x-x'}} \left| \sum_{i=1}^k Y_i \right|.$$

We have $D_{\max}(x, x') = M_{x-x'}$. Since the variables $(U_n), n \in \mathbb{N}$, are not independent, we cannot apply directly Lemma 8. Let $(\theta_k), k \in \mathbb{N}$, be the sequence given in Theorem 6 and $\tilde{U}_k = \sum_{i=\theta_{k-1}+1}^{\theta_k} U_i$. $(\tilde{U}_k), k \in \mathbb{N}^*$ is an i.i.d. sequence and $E|\tilde{U}_1|^n < \infty$.

Let $\alpha_n = \sup\{k : \theta_{k+1} \leq n\}$, we have :

$$\left| S_n - \sum_{k=1}^{\alpha_n} \tilde{U}_k \right| \leq \sum_{i=1}^{\theta_1} |U_i| + \sum_{i=\theta_{\alpha_n}}^n |U_i|.$$

Thus from Lemma 8 applied to $(\tilde{U}_k), k \in \mathbb{N}^*$, we deduce the result for $(U_k), k \in \mathbb{N}$. □

5 The Radial Path

For $x > 0$, let $R_0(x)$ denote the path from $X_0 = (x, 0)$ to the origin in the RST. This path (a sample of which is depicted in Figure 11) may be seen as a

piecewise linear curve in \mathbb{R}^2 . We denote by $H(x)$ the generation of T_0 in the RST. As for the DSF, we will denote by $X_0, X_1, \dots, X_{H(x)} = 0$ the sequence of the successive ancestors of X_0 in the RST.

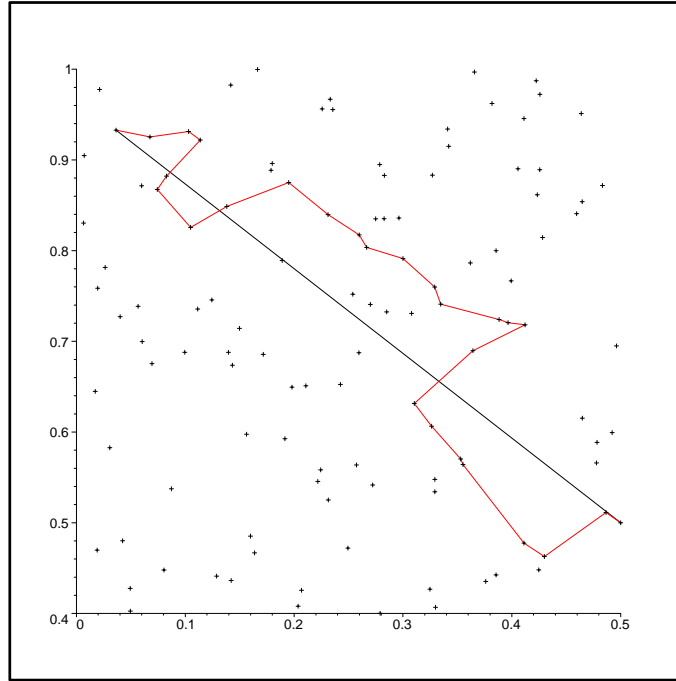


Figure 11: An example of radial path (with its origin in $(1/2, 1/2)$). The initial point is of generation 26.

One of the important differences with the path $R(x)$ of the directed spanning tree studied in the last section is that the points $X_0, X_1, \dots, X_{H(x)}$ which are the ancestors of point $X_0 = (0, x)$ in the RST are not necessarily such that $X_i \cdot e_x$ is a decreasing sequence in i .

5.1 Maximal Fluctuation of the Radial Path

The aim of this section is to bound the tail of the distribution of :

$$D_{\max}(x) = d(R_0(x), \overline{0x}) = \sup_{X \in R_0(x)} \inf_{X' \in \overline{0x}} |X - X'|, \quad (32)$$

where $\overline{0x}$ denotes the x axis. For all $t \in \mathbb{R}$, we define :

$$\begin{aligned} Y(t) &= \max(0, \sup\{y : (t, y) \in R_0(x)\}) \\ Z(t) &= \max(0, -\inf\{y : (t, y) \in R_0(x)\}), \end{aligned}$$

where the supremum over an empty set is taken to be $-\infty$. Notice that $Y(x) = 0$, $Y(t) = 0$ for $t \notin [-x, x]$, $\sup_{t \in \mathbb{R}} Y(t) = \sup\{X.e_y : X \in R_0(x)\}$ and:

$$D_{\max}(x) = \max(\sup_{t \in \mathbb{R}} Y(t), \sup_{t \in \mathbb{R}} Z(t)).$$

Now let $\hat{R}(x)$ denote the path from $(x, 0)$ in the directed spanning tree with direction $-e_x$, when building this tree on the same point process as the RST, but with all points below the line $\overline{0x}$ removed. The path $\hat{R}(x)$ may be parameterized by the x coordinate of the process

$$\hat{R}(x) = \{(t, \hat{Y}(t)), t \leq x\}.$$

The key result of this subsection is the following :

Theorem 10 For all $t \leq x$, $Y(t) \leq \hat{Y}(t)$.

Proof The proof of this result is in two steps.

We first prove that if the two curves share a common point T of the point process, namely if $(t, Y(t)) = (t, \hat{Y}(t)) = T$ for some T (like for instance $T = (x, 0)$), then the segment of $R_0(x)$ from T to its ancestor is never above that from T to its ancestor in $\hat{R}(x)$.

Let $y = Y(t) = \hat{Y}(t) \geq 0$. The ancestor of T in the radial (resp. directed) tree is denoted by S (resp. \hat{S}). If $S = \hat{S}$, then the segments from T to its ancestor coincide in the two trees and the property is proved.

If $S \neq \hat{S}$ and $S \in L_-$ (where L_- denote the half plane $y \leq 0$), the property also holds since $\hat{S} \in L_-^c$.

Let $\mathcal{H}^-(t)$ denote the left half-plane ($x < t$). If $S \neq \hat{S}$ and $S \in L^c$, then $\hat{S} \in \mathcal{H}^-(t) \setminus B(0, |T|)$, and since $\hat{S} \in L^c$, \hat{S} is necessarily above $B(0, |T|)$, the property is proved in this case too.

To complete the proof, we now show that the curve $R_0(x)$ cannot cross the curve $\hat{R}(x)$ to enter the region above $\hat{R}(x)$ at a location which is not a point of the point process. Suppose that the two curves intersect as indicated and that the intersection takes place between nodes $\hat{T}_i = (\hat{x}_i, \hat{y}_i)$ and $\hat{T}_{i+1} = (\hat{x}_{i+1}, \hat{y}_{i+1})$ in the directed spanning tree and between nodes $T_j = (x_j, y_j)$ and $T_{j+1} = (x_{j+1}, y_{j+1})$ in the RST. Because of the assumptions on the intersection, one can assume $\hat{x}_i \geq \hat{x}_{i+1}$ and $x_j \geq x_{j+1}$. Let L denote the closed half plane below the line (T_j, T_{j+1}) . We have $\hat{T}_i \in L^c$ and $\hat{T}_{i+1} \in L$.

Suppose that $\hat{x}_i < x_j$. The ancestors of \hat{T}_i , \hat{T}_{i+1} and T_j are both in $\mathcal{H}^-(\hat{x}_i)$. From the construction of the directed spanning tree, for any point X of the point process lying in $H(\hat{x}_i)$, $\hat{T}_{i+1} \in B(\hat{T}_i, |\hat{T}_i - X|)$. Using the fact that $\hat{x}_i < x_j$ and $y_j < \hat{y}_j$, we get that $B(\hat{T}_i, |\hat{T}_i - T_{j+1}|) \cap \mathcal{H}^-(\hat{x}_i) \cap L \subset B(T_j, |T_j - T_{j+1}|) \cap \mathcal{H}^-(\hat{x}_i) \cap L$. Now, by construction of the RST, $B(T_j, |T_j - T_{j+1}|) \cap \mathcal{H}^-(\hat{x}_i) \cap L = \{T_{j+1}\}$. It follows that $\hat{T}_{i+1} = T_{j+1}$.

If $\hat{x}_i \geq x_j$, then simple geometric arguments show that necessarily, $\hat{T}_{i+1} = T_j$. \square

Corollary 11 *For all $\epsilon > 0$ and all integers n ,*

$$P(D_{\max}(x) \geq |x|^{\frac{1}{2}+\epsilon}) = O(|x|^{-n}).$$

Proof Let $x > 0$ and $\tilde{R}(x)$ be the path from $(x, 0)$ in the directed spanning tree with direction $-e_x$, obtained when using the same point process as in the RST but when removing all points above the line $\overline{0x}$. We define $\tilde{Z}(t)$ from $\tilde{R}(x)$ as we defined $\hat{Y}(t)$ from $\hat{R}(x)$. From Theorem 10 we have : $Z(t) \leq \tilde{Z}(t)$.

By symmetry, the law of the process $\tilde{Z}(\cdot)$ is the same as the law of $\hat{Y}(\cdot)$. To derive the result it is enough to prove that :

$$P\left(\sup_{t \in [-x, x]} \hat{Y}(t) \geq x^{\frac{1}{2}+\epsilon}\right) = O(x^{-n}).$$

We have already proved this statement for the path $R(x)$ in the directed chain built on the whole Poisson point process. The difference between $R(x)$

and $\hat{R}(x)$ appears on the vicinity of the line $\overline{0x}$. Thus the supremum should not be too much affected.

To formalize this idea, consider the event, $\gamma > 0$,

$$A_{\gamma,x} = \{\exists a \in \mathbb{R}^2, \text{ with } |a| \leq 2x \text{ and } |a - \mathcal{A}(a)| \geq x^\gamma\}.$$

Following the proof of Lemma 5.2 of [13], we have

$$P(A_{\gamma,x}) \leq C_1 \exp(-C_0 x^{2\gamma}).$$

Fix $\epsilon > 0$, $\epsilon'' < \epsilon' < \epsilon$ and $\gamma \leq \frac{1}{2}$. On $A_{\gamma,x}^c$, if $\sup_{t \in [-x,x]} \hat{Y}(t) \geq x^{\frac{1}{2}+\epsilon}$, then for x large enough, there exists at least a point of $\hat{R}(x) \cap N$ with its y coordinate in the interval $[x^{\frac{1}{2}+\epsilon'}, 2x^{\frac{1}{2}+\epsilon'}]$. Let $X_0 = (t_0, y_0)$ be the rightmost such point. Note that $|X_0| \geq x^{\frac{1}{2}+\epsilon'} \geq \sqrt{x}$. The path $\hat{R}(x)$ coincides with the path $R(X_0)$ on the interval $[-x, X_0]$ provided the maximal deviation of $R(X_0)$ is less than $x^{\frac{1}{2}+\epsilon''}$; indeed the infimum of $R(X_0)$ will then be lower bounded by $y_0 - x^{\frac{1}{2}+\epsilon''} > 0$. The event $\{R(X_0) \geq x^{\frac{1}{2}+\epsilon''}\}$ is a subset of $\tilde{A}_{\epsilon'',x} = \cup_{y \in N \cap B(0,x) \setminus B(0,\sqrt{x})} \{D_{\max}(y, -y)(R) \geq x^{\frac{1}{2}+\epsilon''}\}$. From Theorem 9 there exists a constant C (depending on ϵ'') such that $P(D_{\max}(y, -y)(R) \geq y^{\frac{1}{2}+\epsilon''}) \leq C|y|^{-n}$. Now, let $l > e$, we get:

$$\begin{aligned} P(\tilde{A}_{\epsilon'',x}) &\leq P(\cup_{y \in N \cap B(0,x) \setminus B(0,\sqrt{x})} \{D_{\max}(y, -y)(R) \geq y^{\frac{1}{2}+\epsilon''}\}) \\ &\leq P(N(B(0, x)) \geq l\pi x^2) + l\pi x^2 C|x|^{-n/2}. \end{aligned}$$

Thus $P(\tilde{A}_{\epsilon'',x}) = O(|x|^{-n})$ for all integer n .

Using this remark, we have :

$$P(\sup_{t \in [-x,x]} \hat{Y}(t) \geq x^{\frac{1}{2}+\epsilon}) \leq P(A_{\gamma,x}) + P(\tilde{A}_{\epsilon'',x})$$

□

For $X \in N$, let $R_{out}(X)$ be the set of offspring of X in the RST, namely the set $X' \in N$ such that $X \in R_0(X')$. We now state a definition introduced in [13].

Definition 2 Let f be a positive function on \mathbb{R}_+ . A tree is said to be f -straight at the origin, if for all but finitely many vertices :

$$R_{out}(X) \subset C(X, f(X)),$$

where for all $X \in \mathbb{R}^2$ and $\epsilon \in \mathbb{R}^+$, $C(X, \epsilon) = \{Y \in \mathbb{R}^2 : \theta(X, Y) \leq \epsilon\}$ and $\theta(X, Y)$ is the absolute value of the angle (in $[0, \pi]$) between X and Y .

Theorem 12 *The number of points of N such that $D_{\max}(x) \geq |x|^{\frac{1}{2}+\epsilon}$ is a.s. finite. The RST is f -straight at 0 for $f(x) = |x|^{-\frac{1}{2}+\epsilon}$ for all $\epsilon > 0$.*

Proof We first prove that the number K of points T_n of N such that $D_{\max}(T_n) \geq |T_n|^{\frac{1}{2}+\epsilon}$ is finite.

From Corollary 11, for all $X \in \mathbb{R}^2$, $P(D_{\max}(X) \geq |X|^{\frac{1}{2}+\epsilon}) \leq 1 \wedge C|X|^{-3}$, where C depends on ϵ . From Campbell's Formula :

$$\begin{aligned} EK &= E \sum_{T_n \in N} \mathbf{1}(D_{\max}(T_n) \geq |T_n|^{\frac{1}{2}+\epsilon}) \\ &= 2\pi \int_0^\infty P(D_{\max}(x) \geq |x|^{\frac{1}{2}+\epsilon}) x dx \\ &\leq 2\pi \int_0^\infty 1 \wedge Cx^{-2} dx < \infty. \end{aligned}$$

The rest of the proof uses the same argument as Theorem 2.6, Lemma 2.7 of [13] (with $3/4$ replaced with $1/2$). \square

f -straight trees have a simple topology described by Proposition 2.8 of [13] and restated in Theorem 1.

5.2 Law of Large Numbers on the Radial Path

The aim of this section is to prove Theorem 4. We use the notation introduced at the beginning of §5. Let $X_0 = x, X_1, \dots, X_{H(x)} = 0$ be the successive ancestors of x in the RST.

The edge between X_i and X_{i-1} is $U_i = X_{i-1} - X_i$. Let $U_0 = -X_0$, we have :

$$X_n = - \sum_{l=0}^n U_l \quad \text{and} \quad X_n - X_k = - \sum_{l=k+1}^n U_l.$$

We define $D_0 = B(X_0, |X_0|)$ and

$$D_n = B(X_n, |X_n|) \cap \left\{ \bigcup_{k=0}^{n-1} B(X_n - X_k, |U_{k+1}|) \right\}^c. \quad (33)$$

The distribution of U_{n+1} given (U_0, \dots, U_n) is:

$$\mathbb{1}(r < |X_n|) \frac{d}{dr} \nu_2(B(0, r) \cap D_n) e^{-\nu_2(B(0, r) \cap D_n)} \frac{\mathbb{1}_{(r, \theta) \in D_n} r dr d\theta}{\nu_1(C(0, r) \cap D_n)} + c \delta_{-X_n}(r, \theta),$$

where c is a normalizing constant.

Let g be a measurable $\mathbb{R}^2 \mapsto \mathbb{R}$ function, we suppose that $|g(x)| \leq \max(C, |x|^\alpha)$ for some positive constants C and α . We define the statistical average of g on $R_0(x)$ as:

$$S_{H(x)} = \sum_{n=1}^{H(x)} g([X_{n-1} - X_n]_{X_{n-1}}).$$

where $[u]_v$ is the vector u rotated by an angle $-\theta$ and $v = r \cos \theta \cdot e_x + r \sin \theta \cdot e_y$ ($[u]_v$ is the vector u expressed in the local coordinates of v).

We will first prove that:

$$\lim_{x \rightarrow +\infty} \frac{S_{H(x)}}{H(x)} = \pi(g), \tag{34}$$

where π is defined by Equation (27).

Results on the matter will follow from the corresponding results on the directed path. The proof of theorem is in three steps.

5.2.1 Step I : Pseudo-Regenerative Times

In this part, we associate to the RST a sequence equivalent to the sequence given by Theorem 6 for the DSF.

Let \mathcal{F}_n be the σ -field generated by X_0, U_1, \dots, U_n . Clearly, $X_n \in \mathcal{F}_n$. We build a coupling on the process $\{U_n\}$ in same vein as in [3] for Markov Chains. As in the DSF, we define

$$\tau_{n+1} = \inf \left\{ m > \tau_n : B(0, |X_m|) \cap \left\{ \bigcup_{k=\tau_n-1}^{m-2} B(X_m - X_k, |U_{k+1}|) = \emptyset \right\} \right\},$$

with $\tau_0 = 1$ and $\Phi_n = \{0, X_{\tau_{n-1}} - X_{\tau_{n-1}+1}, \dots, X_{\tau_n-1} - X_{\tau_n}\}$. For n large enough, $\Phi_n = \{0\}$. Let $\tilde{\Phi}_n$ denote the Φ_n vector in the following referential:

the origin is in $X_{\tau_{n-1}}$ and the basis vectors are $(e_{X_{\tau_{n-1}}}, e_{\hat{X}_{\tau_{n-1}}})$, where $\hat{X}_{\tau_{n-1}}$ is the point of coordinates $(-X_{\tau_{n-1}}^{(2)}, X_{\tau_{n-1}}^{(1)})$.

We recall some notation introduced in the proof of Theorem 5. For $\tilde{\Phi} = \{0, Y_1, \dots, Y_{\tau(\tilde{\Phi})}\}$ in $\mathcal{N}_{\mathcal{X}}$ and $\tau(\tilde{\Phi}) \geq 1$, we define $(R(\tilde{\Phi}), \Theta(\tilde{\Phi}))$ as the coordinates of $Y_{\tau(\tilde{\Phi})}$. The set $\mathcal{S} \in \mathcal{B}(\mathcal{N}_{\mathcal{X}})$ is defined by :

$$\mathcal{S} = \{0\} \cup \{\Phi \in \mathcal{N}_{\mathcal{X}} \setminus \{0\} : |\Theta(\Phi)| \leq \pi/6, R(\Phi) \leq 1\}. \quad (35)$$

Let \mathcal{G} denote the sub σ -algebra of $\mathcal{B}(\mathcal{N}_{\mathcal{X}})$ generated by the sets $\{\tau(\Phi) = 1\} \cap \{X_1(\Phi) \in B\}$, $B \in \mathcal{C}$, where $\mathcal{C} = \{(r, \theta) \in \mathbb{R}^2 : \theta \in [-\pi/3, \pi/3], r \leq 1\}$. We have the following lemma :

Lemma 9 *There exist positive constants λ and g , and a measure ν with support on \mathcal{G} , such that for any x_0 large enough and for all n ,*

$$(i) P(\tilde{\Phi}_{n+1} \in \mathcal{S} | \mathcal{F}_{\tau_n}) \geq \lambda > 0;$$

$$(ii) \text{ if } |X_{\tau_n}| \geq x_0 \text{ and } \tilde{\Phi}_n \in \mathcal{S}, \text{ then } P(\tilde{\Phi}_{n+1} \in A | \mathcal{F}_{\tau_n}) \geq g\nu(A),$$

Proof Define $c_\alpha(R) = \{x = (r, \theta) \in \mathbb{R}^2 : \theta \in (\alpha, 0], r \leq R\}$ for $\alpha < 0$, and $c_\alpha(R) = \{x = (r, \theta) \in \mathbb{R}^2 : \theta \in [0, \alpha), r \leq R\}$ for $\alpha > 0$. We may prove as in Lemma 5 that the RST is such that either $c_{\pi/6}(|X_n|) \subset \tilde{D}_n$ or $c_{-\pi/6}(|X_n|) \subset \tilde{D}_n$, where \tilde{D}_n is the set defined by Equation (33) reexpressed in the above referential. Hence,

$$P(\tilde{U}_{n+1} \in c_{\frac{\pi}{6}}(1) \cup c_{-\frac{\pi}{6}}(1) | \mathcal{F}_n) \geq \frac{1}{6}(1 - e^{-\frac{\pi}{12}}) = \lambda > 0.$$

The proof of Property (i) is then similar to that of (24) in Lemma 7 for the RST case.

For x_0 large enough, if $|X_{\tau_n}| \geq x_0$ and $\tilde{\Phi}_n \in \mathcal{S}$, the cone C is included in \tilde{D}_{τ_n} . As in the proof of Theorem 5, we can check that $\nu = P_0^1|_{\mathcal{G}}$ satisfies Property (ii) for a suitable choice of g , where P_0^1 was defined in Theorem 5. \square

Fix x_0 and define

$$n(x) = \sup\{n : |X_n| \geq x_0\}. \quad (36)$$

Following the proof of the Regeneration Lemma [3], we can show the existence of a sequence of stopping times N_k (on an enlarged probability space) such that $N_0 = 0$ and such that for all $A \in \mathcal{B}(\mathcal{N}_{\mathcal{X}})$,

$$P(\Phi_{n+1} \in A, N_k = n, \tau_n \leq n(x)) = \nu(A)P(N_k = n, \tau_n \leq n(x)).$$

From property (i) and (ii), $\{N_k\}$ is a renewal process and it can be built such that $N_{k+1} - N_k$ is a geometric random variable of parameter $\lambda g > 0$.

Let

$$K'(x) = \sup\{k : |X_{\tau_{N_k}}| \geq x_0\}.$$

For $1 \leq k \leq K'(x) + 1$, $(\tilde{\Phi}_{N_{k+1}}, \dots, \tilde{\Phi}_{N_{k+1}})$ depends on the past only through $|X_{\tau_{N_{k-1}}}|$. Thus, we have found some homogeneous regenerative structure on the non-homogeneous process (U_n) .

Let

$$\theta_k = \tau_{N_{k-1}} \tag{37}$$

and

$$K(x) = \tau_{N_{K'(x)}}. \tag{38}$$

Note that Lemma 6 is still valid for the RST. Indeed, this lemma relies on the bounds \tilde{L}_i and \tilde{P}_i which also hold for the RST. Finally we have the following decomposition :

Lemma 10 *For all x_0 large enough, there exists an increasing sequence of finite stopping times $\{\theta_k\}, k \in \mathbb{N}$, (on an enlarged probability space) such that $\theta_0 = 0$, for all $k \geq 0$, $P(\theta_{k+1} - \theta_k > n | \mathcal{F}_{\theta_k}) \leq C_1 \exp(-C_0 n)$, for some positive constants and for $0 \leq k \leq K(x)$, $(U_{\theta_{k+1}}, \dots, U_{\theta_{k+1}})$ depends on \mathcal{F}_{θ_k} only through $|X_{\theta_k}|$.*

Lemma 11 *Almost surely, $H(x)$ and $K(x)$ tend toward infinity with x .*

Proof Let $\beta < 1$ and $A_{\beta,x} = \{\exists a \in N, \text{ with } |a| \leq 2x \text{ and } |a - \mathcal{A}(a)| \geq x^\beta\}$. The proof of Lemma 5.2 of [13] implies that $P(A_{\beta,x}) = O(|x|^{-q})$ for all q .

On $A_{\beta,|X|}^c$, $H(X) \geq \lfloor |X|^{1-\beta} \rfloor$. Let M be the number of points in N such that $H(X) \leq |X|^{1-\beta}$. From Campbell's Formula : $EM \leq 2\pi \int_0^\infty P(A_{\beta,x}) x dx < \infty$. Hence M is finite almost surely.

To prove that $K(x)$ is finite, notice that

$$P(\theta_{k+1} - \theta_k > n | \mathcal{F}_{\theta_k}) \leq C_1 \exp(-C_0 n)$$

which implies that a.s. $\limsup_k \theta_k/k < C_1 < \infty$. Hence, a.s. for k large enough $|X_{\lfloor C_1 k \rfloor}| \geq x_0$ implies that $K(x) \geq k$. Pick $k = \lfloor |x|^{1-\beta} \rfloor$ and the proof is similar to the proof for $H(x)$. \square

5.2.2 Step II : Identification of the Limit

For $0 \leq k \leq K(x)$, let $V_n = [U_n]_{X_{n-1}}$ and:

$$\tilde{S}_k(x) = \sum_{n=\theta_k+1}^{\theta_{k+1}} g(V_n).$$

The next step is to identify $\lim_{x \rightarrow \infty} E\tilde{S}_k(x)$. Notice that in the DSF with direction $-e_x$, the same construction can be done on the path starting from 0; we will denote similarly U_n^{DSF} , θ_k^{DSF} and $\tilde{S}_k^{DSF} = \sum_{n=\theta_k^{DSF}+1}^{\theta_{k+1}^{DSF}} g(U_n^{DSF})$. These sequences are i.i.d. sequence, so that Theorem 7 gives $E\tilde{S}_k^{DSF} = \pi(g)\bar{\theta}$, where $\bar{\theta} = E(\theta_{k+1}^{DSF} - \theta_k^{DSF})$.

From Lemma 10, using the Cauchy-Schwartz inequality, we get

$$\begin{aligned} E\tilde{S}_1(x) &= \sum_{k=0}^{\infty} E \left(\mathbf{1}(\theta_1 = k) \sum_{n=0}^k g(V_n(x)) \right) \\ &\leq \sum_{n=0}^{\infty} C_1 \exp(-C_0 n) \sqrt{Eg^2(V_n(x))}. \end{aligned} \quad (39)$$

Since $g(V_n(x))$ is stochastically dominated by $\max(C, Z^\alpha)$, where $P(Z > t) \leq e^{-\pi t^2/12}$, it follows from Theorem 3 that

$$\lim_{x \rightarrow \infty} Eg(V_n(x)) = Eg(U_n^{DSF}).$$

Since $P(|U_{n+1}(x)| > t | \mathcal{F}_n) \leq e^{-\pi t^2/12}$, $Eg^2(V_n(x))$ is uniformly bounded. So, from the dominated convergence theorem and Equation (39) we deduce that $\lim_{x \rightarrow +\infty} E\tilde{S}_1(x) = \pi(g)\bar{\theta}$.

Similarly, the law $\tilde{S}_k(x)$ depends of x and k only through $|X_{\theta_k}|$, which tends toward infinity as x tends toward infinity; it follows a.s. :

$$\lim_{x \rightarrow +\infty} E(\tilde{S}_k(x) | \mathcal{F}_{\theta_k}) = \pi(g)\bar{\theta}. \quad (40)$$

5.2.3 Step III : Convergence

We may write :

$$\frac{S_{H(x)}}{H(x)} = \frac{1}{H(x)} \sum_{k=1}^{K(x)} \tilde{S}_k(x) + \frac{1}{H(x)} \sum_{\theta_{K(x)+1}}^{H(x)} g(V_n).$$

There is almost surely a finite number of edges in $B(0, x_0)$; thus, from Lemma 11, the second term tends a.s. to 0. From Equation (40), we also obtain that a.s. $\lim_{x \rightarrow \infty} 1/K(x) \sum_{k=1}^{K(x)} E(\tilde{S}_k(x) | \mathcal{F}_{\theta_k}) = \pi(g)\bar{\theta}$.

Moreover using the same arguments as in Equation (39), we get $E(|\tilde{S}_k(x)|^2) < M < \infty$. We can then apply Theorem VII.9.3 of [7] which gives

$$\lim_{x \rightarrow \infty} \frac{1}{K(x)} \sum_{k=1}^{K(x)} \tilde{S}_k(x) = \lim_{x \rightarrow +\infty} \frac{1}{K(x)} \sum_{k=1}^{K(x)} E(\tilde{S}_k(x) | \mathcal{F}_{\theta_k}) = \pi(g)\bar{\theta}, \quad a.s.$$

For $g = 1$, we deduce that a.s. $H(x)/K(x)$ tends to $\bar{\theta}$. This ends the proof of Equation (34).

To complete the proof of Theorem 4, it remains to show that if g is continuous $\lim_{x \rightarrow +\infty} 1/H(x) \sum_{k=1}^{H(x)} g(X_{k-1} - X_k) = \pi(g)$. This is a consequence of Theorem 12 and Equation (34). Indeed a.s. for all k , as x tends toward infinity, $[X_{k-1} - X_k]_{X_{k-1}}$ tends toward $X_{k-1} - X_k$. If g is continuous, we deduce that $1/H(x) \sum_{k=1}^{H(x)} g(X_{k-1} - X_k)$ and $1/H(x) \sum_{k=1}^{H(x)} g([X_{k-1} - X_k]_{X_{k-1}})$ have the same limit.

Corollary 13 *The following a.s. limits hold :*

$$\lim_{x \rightarrow +\infty} \frac{H(x)}{x} = \frac{1}{p}.$$

$$\lim_{x \rightarrow +\infty} \frac{1}{x} \sum_{k=0}^{H(x)-1} |T_{k+1} - T_k|^\alpha = \frac{l_\alpha}{p}.$$

where p and l_α are defined in Corollary 8.

5.3 Shape Fluctuation

Figure 12 depicts the sequence \mathcal{T}_k , of subtrees with nodes less than k generations away from the origin.



Figure 12: The subtrees $\mathcal{T}(k)$ for k ranging from 1 to 10.

We define $G_k = |\mathcal{T}(k)|$; G_k is the size of the ball of center 0 and radius k for the graph-distance on the RST.

The main aim of this section is to prove Theorem 2, and in particular the fact that G_k/k^2 a.s. tends to a constant when k tends to ∞ . In the literature, this constant is known as the *volume growth*.

The intuition behind Theorem 2 is as follows: from the results of Section 5.2, a point k hops away from the origin is asymptotically at Euclidean distance $d_k \sim kp$ from the origin. The disc of radius d_k contains πd_k^2 nodes asymptotically.

In order to prove Theorem 2, we need an estimate of the tail of the fluctuations of $H(x)$ around its mean. This fluctuation is depicted in Figure 13 where

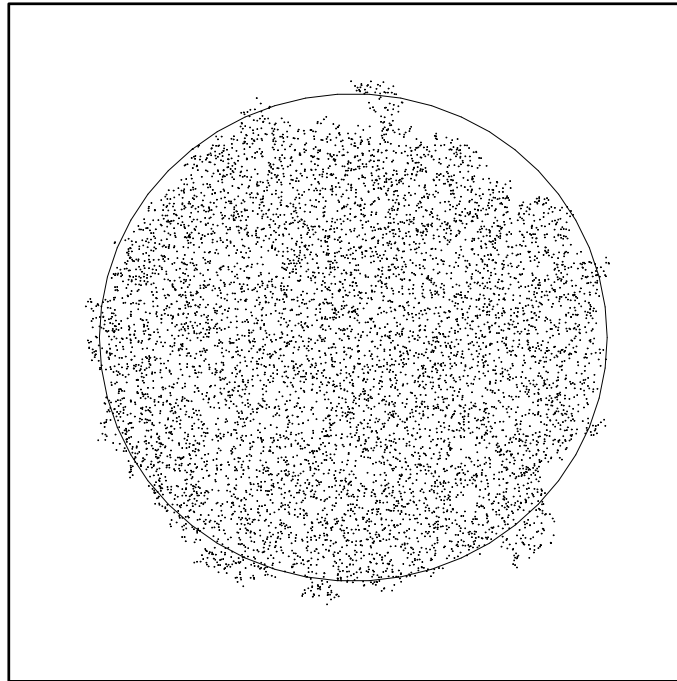


Figure 13: The points of $\mathcal{T}(100)$ and the disc of radius $100p$.

we give the set of points T of a realization of the PPP such that $H(T) \leq 100$.

The proof of the next theorem is the heart of the proof of Theorem 2.

Theorem 14 *For all $q < p$, there exists positive constants C_0 and C_1 :*

$$P(H(x) > \frac{x}{q}) \leq C_1 \exp(-C_0 x).$$

Similarly for $q > p$:

$$P(H(x) < \frac{x}{q}) \leq C_1 \exp(-C_0 x).$$

The proof is again in three steps.

Let $X_0 = x, X_1, \dots, X_{H(x)} = 0$, the successive ancestors of x in the radial spanning tree. For $1 \leq n \leq H(x)$, we define the progress:

$$P_n(x) = |X_{n-1}| - |X_n|$$

and for $n > H(x)$, $P_n(x) = 0$. By definition, for all integers m ,

$$P(H(x) > m) = P\left(\sum_{n=1}^m P_n(x) < x\right).$$

In order to derive the tail bounds of the theorem, we will analyze the asymptotic behavior of $P_n(x)$.

5.3.1 Step I : Pseudo Regenerative Times

We will use the notation of §5.2 and the sequence of stopping times $0 = \theta_0, \theta_1, \dots$ given by Lemma 10, which are such that, for $0 \leq k \leq K(x)$, $(P_{\theta_{k+1}}(x), \dots, P_{\theta_{k+1}}(x))$ depends of \mathcal{F}_{θ_k} only through $|X_{\theta_k}|$.

Let

$$\widehat{P}_k(x) = \sum_{n=\theta_{k+1}}^{\theta_{k+1}} P_n(x).$$

From Equation (40):

$$\lim_{x \rightarrow \infty} E\widehat{P}_k(x) = p\bar{\theta} = p/\delta, \quad (41)$$

where $\bar{\theta} = \delta^{-1} = \lim_{x \rightarrow \infty} E\theta_1$.

Lemma 12 *There exists positive constants C_0, C_1 such that for all k :*

$$P(\widehat{P}_k(x) \geq t | \mathcal{F}_{\theta_k}) \leq C_1 \exp(-C_0 t).$$

Proof We will state this result for $k = 1$; the proof extends to all k with minor changes. From Lemma 10, the sequence (θ_k) is such that for some constants C_0, C_1 , $P(\theta_{k+1} - \theta_k \geq K | \mathcal{F}_{\theta_k}) \leq C_1 \exp(-C_0 K)$ for all $K > 0$. Let $s > 0$.

From the Cauchy-Schwartz inequality,

$$\begin{aligned}
Ee^{s\widehat{P}_1(x)} &= \sum_{K=1}^{\infty} E\mathbf{1}(\theta_1 = K)e^{s\sum_{n=1}^K P_n(x)} \\
&\leq \sum_{K=1}^{\infty} \sqrt{P(\theta_1 = K)Ee^{2s\sum_{n=1}^K P_n(x)}} \\
&\leq \sum_{K=1}^{\infty} C_1 \exp(-C_0 K) \sqrt{Ee^{2s\sum_{n=1}^K P_n(x)}}. \tag{42}
\end{aligned}$$

We have already noticed that

$$\begin{aligned}
P(P_{n+1}(x) \geq t | \mathcal{F}_n) &\leq \exp\left(-\frac{\pi}{12}t^2\right) \\
E(P_{n+1}(x) | \mathcal{F}_n) &\leq \mu.
\end{aligned}$$

Calculations based on Chernoff's inequality lead to

$$Ee^{2s\sum_{n=1}^K P_n(x)} \leq e^{sK\mu}(1 + C_1 s)^K e^{KC_1^2 s^2} \leq C_1 e^{C_1 s K},$$

for all $s \leq 1$. For s sufficiently small, $sC_1' < C_0$, where C_0 is the constant in (42). For such a choice of s , we get $Ee^{s\widehat{P}_1(x)} \leq C_1$ from Equation (42). The lemma then follows from Chernoff's inequality. \square

5.3.2 Step II : Case $q < p$

Let $q < p' < p$ and $\epsilon > 0$ be such that $q < \frac{\delta}{\delta+\epsilon}p' < p$, with $\delta = \bar{\theta}^{-1}$. From Equation (41), there exists x_0 such that for $x > x_0$, $E(\widehat{P}_k(x) | |X_{\theta_k}| \geq x_0) > \frac{p'}{\delta+\epsilon}$.

$$\begin{aligned}
P(H(x) > m) &= P\left(\sum_{n=1}^m P_n(x) < x\right) \\
&\leq P\left(\sum_{n=1}^{m-l} P_n(x) < x - x_0\right) + P(N(B(0, x_0)) > l) \\
&\leq P\left(\sum_{n=1}^{m-l} P_n(x) < x - x_0\right) + \exp\left(-l \ln \frac{l}{e\pi x_0^2}\right), \tag{43}
\end{aligned}$$

where we have used the classical inequality

$$P(N(B(0, x_0)) > l) \leq \exp(-l \ln \frac{l}{e\pi x_0^2})$$

(Lemma 11.1.1. of [23]).

Let $n(x)$ and $K(x)$ be defined as in (36) and (38) respectively. Let Z_k be the conditional random variable $\widehat{P}_k(x)$ given $K(x) \geq k$. We have $E(Z_k | \mathcal{F}_{\theta_k}) > \frac{p'}{\delta + \epsilon}$. Note that for all integers j :

$$\begin{aligned} P\left(\sum_{n=1}^j P_n(x) < x - x_0\right) &= P\left(\sum_{n=1}^j P_n(x) < x - x_0, n(x) > j\right) \\ &\leq P\left(\sum_{k=1}^{\lfloor (\delta + \epsilon)j \rfloor} \widehat{P}_k(x) < x - x_0\right) + P(\theta_{\lfloor (\delta + \epsilon)j \rfloor} < j) \\ &\leq P\left(\sum_{k=1}^{\lfloor (\delta + \epsilon)j \rfloor} Z_k < x\right) \\ &\quad + P\left(\sum_{k=1}^{\lfloor (\delta + \epsilon)j \rfloor} \theta_k - \theta_{k-1} < j\right). \end{aligned} \tag{44}$$

Indeed, $\{\sum_{k=1}^{\lfloor (\delta + \epsilon)j \rfloor} \widehat{P}_k(x) < x - x_0\}$ is a subset of $\cup_{1 \leq k \leq (\delta + \epsilon)j} \{K(x) \geq k\}$.

Now, let x, j such that $p'j - x > \alpha j$ for some $\alpha > 0$.

$$\begin{aligned}
 & P\left(\sum_{k=1}^{\lfloor(\delta+\epsilon)j\rfloor} Z_k < x\right) \\
 = & P\left(\frac{1}{(\delta+\epsilon)j} \sum_{k=1}^{\lfloor(\delta+\epsilon)j\rfloor} (Z_k - E(Z_k|\mathcal{F}_{N_k}))\right. \\
 & \left. < \frac{x}{(\delta+\epsilon)j} - \frac{1}{(\delta+\epsilon)j} \sum_{k=1}^{\lfloor(\delta+\epsilon)j\rfloor} E(Z_k|\mathcal{F}_{N_k})\right) \\
 \leq & P\left(\frac{1}{(\delta+\epsilon)j} \sum_{k=1}^{\lfloor(\delta+\epsilon)j\rfloor} (Z_k - E(Z_k|\mathcal{F}_{N_k})) < \frac{x}{(\delta+\epsilon)j} - \frac{p'}{q+\epsilon}\right) \\
 \leq & P\left(\left|\frac{1}{(\delta+\epsilon)j} \sum_{k=1}^{\lfloor(\delta+\epsilon)j\rfloor} (Z_k - E(Z_k|\mathcal{F}_{N_k}))\right| > \frac{jp' - x}{(\delta+\epsilon)j}\right).
 \end{aligned}$$

The process $(Z_k - E(Z_k|\mathcal{F}_{N_k}))_k$ satisfies the hypothesis of Lemma 14 (in the Appendix) with $t_0 = \frac{\alpha}{\delta+\epsilon}$. We deduce that :

$$P\left(\sum_{k=1}^{\lfloor(\delta+\epsilon)j\rfloor} Z_k < x\right) \leq C_1 e^{-C_0(jp'-x)}. \quad (45)$$

Similarly, $\theta_k - \theta_{k-1}$ satisfies the same light tail hypothesis as Z_k and for x_0 large enough, $E(\theta_k - \theta_{k-1} | |X_{\theta_{k-1}}| \geq x_0) > t'0 > 1/(\delta+\epsilon)$. We get :

$$P\left(\sum_{k=1}^{\lfloor(\delta+\epsilon)j\rfloor} \theta_k - \theta_{k-1} < j\right) \leq C_1 e^{C_0 j}. \quad (46)$$

Now let $m = \lfloor \frac{x}{q} \rfloor$, $l = \lfloor \frac{\epsilon x}{2q\delta} \rfloor$ and $j = m - l$. For x large enough, the inequality $p'j - x > \alpha j$ holds for some positive α . Putting together Equations (43), (44), (45) and (46), we obtain that for x large enough,

$$P(H(x) > \frac{x}{q}) \leq C_1 e^{-C_0 x \ln x} + C_1 e^{C_0 x} + C_1 e^{C_0 x} = C_1 e^{C_0 x}.$$

Since $P(H(x) > \frac{x}{q}) \leq 1$, by increasing arbitrarily C_1 , we get the above inequality for all x .

5.3.3 Step III : Case $q > p$

The bound $P(H(x) < \frac{x}{q})$, for $q > p$ is obtained with the same type of decomposition :

$$\begin{aligned}
P(H(x) \leq m) &= P\left(\sum_{n=1}^m P_n(x) = x\right) \\
&\leq P\left(\sum_{n=1}^m P_n(x) \geq x - x_0\right) \\
&\leq P\left(\sum_{k=1}^{\lfloor(\delta-\epsilon)m\rfloor} \tilde{P}_k(x) \geq x - x_0\right) + P(\theta_{\lfloor(\delta-\epsilon)m\rfloor} > m) \\
&\leq P\left(\sum_{k=1}^{\lfloor(\delta-\epsilon)m\rfloor} Z_k \geq x - x_0\right) + P\left(\sum_{k=1}^{\lfloor(\delta-\epsilon)m\rfloor} \theta_k - \theta_{k-1} > m\right) \\
&\leq C_1 e^{-C_0(x-x_0-mp')} + C_1 e^{-C_0 m},
\end{aligned}$$

for $p' > p$ and all x, m such that $x - mp' > \alpha m$, for some $\alpha > 0$. Taking $m = \lfloor x/q \rfloor$ and $q > p' > p$, we obtain the upper bound for $P(H(x) < x/q)$ and we are done with the proof of Theorem 14.

Note that the statement of the Theorem is not tight since we do not bound the tail of $|H(x) - x/p|$. It seems possible to derive some concentration inequalities.

Remark 4 Let $S(x) = \frac{1}{H(x)} \sum_{n=1}^{H(x)} f(U_n)$, the same type of theorem holds for any function f which is growing to infinity slower than exponentially, with $1/p$ replaced by $\pi(f)/p$.

5.3.4 Proof of Theorem 2

We begin by the proof of Equation (2). Notice that :

$$G_k = \sum_{T \in \mathcal{N}} \mathbf{1}(H(T) \leq k)$$

Let $\epsilon \in (0, 1)$, we may write :

$$\begin{aligned}
\frac{|G_k - N(B(0, pk))|}{k^2} &\leq \frac{1}{k^2} \left(\sum_n \mathbf{1}(X_n \notin B(0, pk) \cap H(X_n) \leq k) \right. \\
&\quad \left. + \sum_n \mathbf{1}(X_n \in B(0, pk) \cap H(X_n) > k) \right) \\
&\leq \frac{1}{k^2} \sum_n \mathbf{1}(X_n \notin B(0, (1 + \epsilon)pk) \cap H(X_n) \leq k) \\
&\quad + \frac{N(B(0, (1 + \epsilon)pk) \setminus B(0, (1 - \epsilon)pk))}{k^2} \\
&\quad + \frac{1}{k^2} \sum_n \mathbf{1}(X_n \in B(0, (1 - \epsilon)pk) \cap H(X_n) > k) \\
&\leq I_k + J_k + L_k.
\end{aligned}$$

From Campbell's formula and using Theorem 14

$$\begin{aligned}
E(I_k) &= \frac{2\pi}{k^2} \int_{(1+\epsilon)pk}^{\infty} P(H(x) \leq k) x dx \\
&\leq \frac{2\pi}{k^2} \int_{(1+\epsilon)pk}^{\infty} C_1 e^{-C_0 x} x dx \\
&\leq \frac{2\pi}{k^2} C_1 e^{-C_0 k}.
\end{aligned}$$

From Markov's inequality, $P(I_k > 0) = P(I_k \geq 1/k^2) \leq k^2 E(I_k)$ and from the Borel Cantelli Lemma, we obtain that almost surely I_k is equal to 0 for k large enough.

Similarly, let p' such that $q = p(1 - \epsilon) < p' < p$, chosen as in the proof of Theorem 14. Using Equations (43), (44), (45) we get similarly :

$$\begin{aligned}
E(L_k) &= \frac{2\pi}{k^2} \int_0^{(1-\epsilon)pk} P(H(x) \geq k) x dx \\
&\leq \frac{2\pi}{k^2} \left(\int_0^{(1-\epsilon)pk} x C_1 e^{-C_0(kp'-x)} x dx + C_1 e^{-C_0 k} \int_0^{(1-\epsilon)pk} x dx \right) \\
&\leq \frac{2\pi}{k^2} C_1 e^{-C_0 k}.
\end{aligned}$$

Using Markov's inequality and the Borel-Cantelli Lemma, we deduce that almost surely, L_k is 0 for k large enough.

The ergodic properties of the PPP imply that

$$J_k = k^{-2} N(B(0, (1 + \epsilon)pk) \setminus B(0, (1 - \epsilon)pk))$$

converges almost surely and in mean toward $4\pi p\epsilon$. Notice that $N(B(0, (1 + \epsilon)pk) \setminus B(0, (1 - \epsilon)pk))$ is not an increasing sequence of convex sets. To prove this convergence, we need to use the independent properties of the PPP.

We have proved that for all $\epsilon > 0$, almost surely,

$$\limsup_k \frac{|G_k - N(B(0, pk))|}{k^2} \leq 4\pi p\epsilon.$$

Hence, almost surely,

$$\lim_k \frac{G_k}{k^2} = \lim_k \frac{N(B(0, p))}{k^2} = \pi p^2.$$

The proof for the L^1 convergence is a consequence of the dominated convergence theorem.

Equation (1) holds since we have seen that a.s. for k large enough I_k and L_k are both equal to 0, where I_k is the cardinal of $\mathcal{T}(k) \cap B(0, p + \epsilon)^c$, L_k is the cardinal of $\mathcal{T}(k)^c \cap B(0, p - \epsilon)$.

6 Spatial Averages of Edge Lengths

Consider the total edge length of the RST for points included in the ball $B(0, x)$

$$\mathcal{L}_x = \sum_{X \in \mathcal{N}} \mathbf{1}(X \in B(0, x)) |X - \mathcal{A}(X)|.$$

It is well known that for the Minimal Spanning Tree, the subadditive ergodic theorem allows one to prove that $\frac{\mathcal{L}_x}{x^2}$ tends almost surely toward a constant. We prove that the same holds for the RST (with of course a larger constant).

From Campbell's Formula

$$E\mathcal{L}_x = 2\pi \int_0^x E(L(t))t dt.$$

With the change of variable $u = \frac{t}{x}$, this leads to

$$E \frac{\mathcal{L}_x}{x^2} = 2\pi \int_0^1 u E(L(xu)) du,$$

The dominated convergence theorem together with Equation (11) gives

$$\lim_{x \rightarrow \infty} E \frac{\mathcal{L}_x}{x^2} = 2\pi \int_0^1 u \frac{1}{\sqrt{2}} du = \pi/\sqrt{2}.$$

We will prove a stronger result: $\frac{\mathcal{L}_x}{x^2}$ converges almost surely and in L^1 toward $\pi/\sqrt{2}$.

To prove this, we consider here a slightly different problem. We sample n points uniformly and independently on the unit disk. This defines a finite point set $F_n = \{0, X_1, \dots, X_n\}$. We can then construct the RST associated to this point set. The total edge length of this RST is

$$\mathcal{L}(F_N) = \sum_{k=1}^n |X_k - \mathcal{A}(X_k)|.$$

First notice that \mathcal{L} is homogeneous of order 1: for all sets F_n as above and all positive real numbers r , we have $\mathcal{L}(rF_n) = r\mathcal{L}(F_n)$, where $rF_n = \{0, rX_1, \dots, rX_n\}$. Using this and the fact that the ratio $N(B(0, x))/x^2$ tends a.s. toward π , it is easy to check that $\frac{\mathcal{L}_x}{x^2}$ converges a.s. toward $\pi/\sqrt{2}$ if and only if $\frac{\mathcal{L}(F_n)}{\sqrt{n}}$ tends to $\sqrt{\frac{\pi}{2}}$. Since we have already computed the mean of $\frac{\mathcal{L}_x}{x^2}$, it is sufficient to prove that $\frac{\mathcal{L}(F_n)}{\sqrt{n}}$ converges a.s. toward a constant.

For proving the last property, we use the smoothness of $\mathcal{L}(F_n)$ (Theorem 15) and the Rhee and Talagrand concentration inequalities.

Theorem 15 *There exists a positive constant C_1 such that for all finite subsets F and G as defined above,*

$$|\mathcal{L}(F \cup G) - \mathcal{L}(F)| \leq C_1 \sqrt{|G|},$$

in particular : $\mathcal{L}(F) \leq C_1 \sqrt{|F|}$.

Proof \mathcal{L} clearly satisfies the subadditive property: for all finite subsets F and G ,

$$\mathcal{L}(F \cup G) \leq \mathcal{L}(G) + \mathcal{L}(F). \quad (47)$$

From Lemma 3.4.1 of [22], we deduce that there exists a constant C_1 such that $\mathcal{L}(F) \leq C_1 \sqrt{|F|}$. Subadditivity then implies:

$$\begin{aligned} \mathcal{L}(F) &\geq \mathcal{L}(F \cup G) - \mathcal{L}(G) \\ &\geq \mathcal{L}(F \cup G) - C_1 \sqrt{|G|}. \end{aligned}$$

It remains to prove that $\mathcal{L}(F) \leq \mathcal{L}(F \cup G) + C_1 \sqrt{|G|}$, for all finite sets F and G as above.

Let $Y \in G$ and suppose that the points X_1, \dots, X_n of F all have Y as ancestor in the RST built over the set $\{0\} \cup F \cup G$. In particular $|X_i| \geq |Y|$. Suppose $|X_k| \geq |X_j|$ then

$$|X_k - Y|^2 \leq |X_k - X_j|^2 = |X_k - Y|^2 + |X_j - Y|^2 - 2|X_k - Y||X_j - Y| \cos \widehat{X_k Y X_j}.$$

Thus if $\widehat{X_k Y X_j} \leq \frac{\pi}{3}$, $|X_k - Y| \leq |X_j - Y|$. The inequality $|X_k - Y|^2 + |X_j - Y|^2 - 2|X_k - Y||X_j - Y| \cos \widehat{X_k Y X_j} \leq |X_j - Y|^2$ holds for $|X_k - Y| \in [0, 2|X_j - Y| \cos \widehat{X_k Y X_j}] \supset [0, |X_j - Y|]$. It follows that :

$$\begin{aligned} |X_k| \geq |X_j| \text{ and } \widehat{X_k Y X_j} \leq \frac{\pi}{3} \\ \text{implies} \\ |X_k - Y| \leq |X_j - Y| \text{ and } |X_k - X_j| \leq |X_j - Y|. \end{aligned} \quad (48)$$

Let $\Theta(Y, X)$ denote the oriented angle between $0\vec{Y}$ and $0\vec{X}$. Due to the origin if X is connected to $Y \neq 0$ in the RST then $|\Theta(Y, X)| \leq \pi/2$. We index the n points of F connected to Y by their increasing oriented angle $\Theta(Y, X)$ such that $|\Theta(Y, X_0)|$ is minimal. X_1, \dots, X_d are the points counted clockwise from X_0 : $\Theta(Y, X_0) \leq \Theta(Y, X_1) \leq \dots \leq \Theta(Y, X_d) \leq \pi/2$ and $X_{-1}, \dots, X_{-d'}$ are the points counted counter-clockwise from X_0 with $n = d + d' + 1$ (see right picture in Figure 14). We need a tie-breaking rule: if $\Theta(Y, X) = \Theta(Y, X')$ the point with the higher norm has an index closer to 0.

Assume now that for a given $j \geq 0$ we have both $|X_{j+1}| \geq |X_j|$ and $\widehat{X_j Y X_{j+1}} \leq \frac{\pi}{3}$. Then from Equation (48): $|X_{j+1} - Y| \leq |X_j - Y|$, X_{j+1}

belongs to the set $\mathcal{G}(X_j)$ of points closer to Y than X_j and with a norm larger than X_j . However by elementary considerations $X \in \mathcal{G}(X_j)$ implies that $|\Theta(Y, X)| \leq |\Theta(Y, X_j)|$ (see left picture in Figure 14) and this contradicts $\Theta(Y, X_{j+1}) > \Theta(Y, X_j)$ (the strict inequality comes from the tie-breaking rule). Similarly for $j \leq 0$: if $\widehat{X_{j-1}YX_j} \leq \frac{\pi}{3}$ then $|X_{j-1}| \leq |X_j|$.

There are at most 6 points such that $\widehat{X_iYX_{i+1}} \geq \frac{\pi}{3}$ ($i \geq 0$) or $\widehat{X_iYX_{i-1}} \geq \frac{\pi}{3}$ ($i \leq 0$). Therefore from Equation (48) there are at most 6 points such that: ($i \geq 0$ and $|X_{i+1}| \leq |X_i|$ and $|X_{i-1} - X_i| \leq |X_i - Y|$) or ($i < 0$ and $|X_{i+1}| \geq |X_i|$ and $|X_{i+1} - X_i| \leq |X_i - Y|$) does not hold.

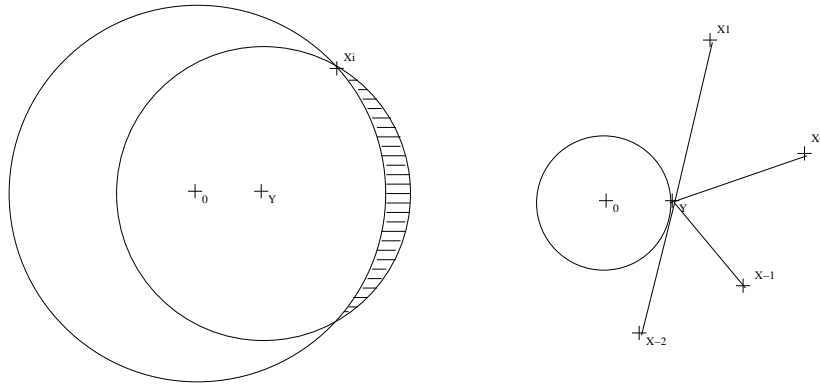


Figure 14: On the left, the dashed area is $\mathcal{G}(X_i)$, on the right, the set of connected points to Y .

Let $\mathcal{A}_F(X)$ denote the ancestor of X in the RST built on the set $\{0\} \cup F$. We have

$$\begin{aligned}
\mathcal{L}(F) &= \sum_{X \in F} |X - \mathcal{A}_F(X)| \\
&= \sum_{X \in F} \mathbf{1}(\mathcal{A}_F(X) = \mathcal{A}_{F \cup G}(X)) |X - \mathcal{A}_{F \cup G}(X)| \\
&\quad + \sum_{Y \in G} \sum_{X \in F \cap \mathcal{A}_{F \cup G}^{-1}(Y)} |X - \mathcal{A}_F(X)| \\
&\leq \mathcal{L}(F \cup G) + \sum_{Y \in G} \sum_{X \in F \cap \mathcal{A}_{F \cup G}^{-1}(Y)} |X - \mathcal{A}_F(X)| - |X - Y|.
\end{aligned}$$

If $F \cap \mathcal{A}_{F \cup G}^{-1}(Y) = \{X_{-d'}, \dots, X_0, \dots, X_d\}$, we have seen above that for at most 6 points $|X_i - \mathcal{A}_{F \cup G}(X_i)| = |X_i - Y| \geq |X_i - X_{i-1}| \geq |X_{i-1} - \mathcal{A}_F(X_{i-1})|$ ($i > 0$) or $|X_i - Y| \geq |X_{i+1} - X_i| \geq |X_{i+1} - \mathcal{A}_F(X_{i+1})|$ ($i < 0$) does not hold.

Henceforth, if J denotes the set of points such that the preceding inequality does not hold and $H(Y) = \{X_d, X_{-d'}\} \cup J$, we have $|H(Y)| \leq 8$ and

$$\begin{aligned}
\sum_{X \in F \cap \mathcal{A}_{F \cup G}^{-1}(Y) \setminus H(Y)} |X - \mathcal{A}_F(X)| &\leq \sum_{i=1}^d |X_i - X_{i-1}| \\
&\quad + \sum_{i=2}^{d'} |X_{-i} - X_{-i+1}| \\
&\leq \sum_{X \in F \cap \mathcal{A}_{F \cup G}^{-1}(Y)} |X - \mathcal{A}_{F \cup G}(X)|.
\end{aligned}$$

If $H = \cup_{Y \in G} H(Y)$, we have $|H| \leq 8|G|$. Using subadditivity, we deduce

$$\mathcal{L}(F) \leq \mathcal{L}(F \cup G) + \mathcal{L}(H) \leq \mathcal{L}(F \cup G) + C\sqrt{8|G|}.$$

□

Theorem 15 ensures that we can apply the Rhee and Talagrand concentration inequalities to the functional \mathcal{L} (Theorem 1 of [21] and Theorem 11.3.2 of [23]) : $\frac{\mathcal{L}(F_N)}{\sqrt{N}}$ converges a.s. toward its mean. Finally, we have proved that a.s.

and in L^1 ,

$$\lim_{x \rightarrow \infty} \frac{\mathcal{L}_x}{x^2} = \pi/\sqrt{2}. \quad (49)$$

More generally, for $\alpha \geq 1$, we define

$$\mathcal{L}^{(\alpha)}(F) = \sum_{X \in F} |X - \mathcal{A}(X)|^\alpha.$$

The proof of Theorem 15 is unchanged if we replace $\mathcal{L}^{(\alpha)}$ by \mathcal{L} (however the constant C_1 does depend on α). Define

$$\lambda_\alpha = \alpha \int_0^\infty r^{\alpha-1} e^{-\frac{\pi r^2}{2}} dr = E|0 - \mathcal{A}_d(0)|^\alpha. \quad (50)$$

From Equation (10), using Campbell formula, we get that

$$\lim_{x \rightarrow +\infty} E\mathcal{L}^{(\alpha)}(x)/x^2 = \pi\lambda_\alpha.$$

We finally deduce :

Theorem 16 *For all $\alpha \geq 1$ a.s. and in L^1 ,*

$$\lim_{x \rightarrow \infty} \frac{\mathcal{L}_x^{(\alpha)}}{x^2} = \pi\lambda_\alpha.$$

We can rewrite this result as $1/N(B(0, x)) \sum_{X \in N} |X - \mathcal{A}(X)|^\alpha$ tends a.s. toward λ_α . That is, the spatial average of the lengths of the edges tends toward the distribution of the length of $(0, \mathcal{A}_d(0))$ in the DSF.

It is crucial to notice that $\lambda_\alpha < l_\alpha$: the spatial average and the average along a long path do not coincide.

Remark 5 We have done our analysis on the length of an edge, of course the same type of result could be obtained for other stabilizing functional. In order to derive weak laws for stabilizing functionals, we can invoke Theorem 2.1 of [20].

7 Model Extension and Open Problems

7.1 Greedy Forests

The radial spanning tree lies in a large class of spanning forests which are locally defined. We could extend the definition of the radial spanning tree over a point set N as follows.

Let l be a measurable function from N to \mathbb{R} and L be a measurable function from $N \times N$ to $\overline{\mathbb{R}}$. Suppose that for all $x, y, z, t \in N$, $\{x, y\} \neq \{z, t\}$, $L(x, y) \neq L(z, t)$, for $x \neq y$ $l(x) \neq l(y)$ and $l(N)$ as no accumulation point. Then we can define the following forest $\mathcal{F} = (N, E)$: for $l(y) < l(x)$: $(x, y) \in E$ if and only if $y = \arg \min_{z \in N, l(z) < l(x)} L(x, z)$.

When $l(x) = |x|$, $L(x, y) = |x - y|$ and $0 \in N$, we define the radial spanning tree, if $l(x) = \langle x, e_x \rangle$ and $L(x, y) = |x - y|$, this is the directed spanning forest, if instead $L(x, y)$ is the length of a possibly infinite well chosen cylinder, we obtain the Poisson Forest of [9].

Let $R(x)$ denotes the set of successive ancestors of vertex at x . The construction of $R(x)$ can be thought as greedy because at each vertex of $R(x)$ a one-step optimization is performed.

As an example, in Appendix §8.2, we discuss briefly the radial spanning tree obtained by choosing the L^∞ -norm.

7.2 The Radial Spanning Tree of a Voronoi Cell

An interesting way to extend the RST is to consider two independent Poisson point processes, $N_0 = \{T_n^0\}$, the point process of *cluster heads* (we use here the terminology of sensor networks, which motivate this extension), of intensity λ_0 and $N_1 = \{T_n^1\}$, the point process of *nodes*, with intensity λ_1 . The first point process tessellates the plane in Voronoi cells. We denote by V_n the Voronoi cell of point T_n^0 w.r.t. the points of N_0 . Two forests can then be defined in relation with this tessellation:

- The family of *internal* RSTs: the n -th tree of this forests, \mathcal{T}_n , is the RST built using the points of N_1 that are contained in V_n , with T_n^0 as a root.
- The family of *local* RSTs: if node X belongs to V_n , one defines its ancestor as the point of $(N_1 \cup \{T_n^0\}) \cap B(T_n^0, |X - T_n^0|)$ that is the closest to X .

Notice that this ancestor does not necessarily belong to V_n . Nevertheless, this rule defines a forest too (see Lemma 13). One then defines the n -th local RST tree \mathcal{U}_n as the tree which is the union of all the paths from nodes with ultimate ancestor T_n^0 .

In what follows, we concentrate on the second case which can be analyzed using the same type of tools as in §3. Figure 15 depicts a sample of such a forest.

Lemma 13 *Almost surely, there exists no node X of N_0 such that the sequence of ancestors of X based on the local RST rule contains node X .*

Proof Let $\{Y_i\}_{i \geq 0}$ be the sequence of ancestors of $X = Y_0$. If $Y_i = X$ for some $i > 0$, then necessarily the points of $\{Y_i\}$ belong to different Voronoi cells (if this were not the case, then the distance to the cluster head of the cell to which all points belong would be strictly decreasing, which forbids cycles). Then one can then rewrite $\{Y_i\}_{i \geq 0}$ as

$$\{Y_i\}_{i \geq 0} = \{Z_0(1), \dots, Z_0(n_0), Z_1(1), \dots, Z_1(n_1), \dots, Z_j(1), \dots, Z_j(k), \dots\}$$

with $Z_l(1), \dots, Z_l(n_l) \in W_l$ for all $0 \leq l \leq j$, where $\{W_j\}_{j \geq 0}$ is a sequence of cells such that $W_l \neq W_{l+1}$ for all $l < j$, n_l is a sequence of integers and $Z_j(k) = X$. Let S_l denote the cluster head of W_l . Then the definition of the local RST implies that a.s.

$$|X - S_0| = |Z_0(1) - S_0| > |Z_0(2) - S_0| > \dots > |Z_0(n_0) - S_0| > |Z_1(1) - S_0|.$$

Since $Z_1(1)$ belongs to W_1 , we have a.s.

$$|Z_1(1) - S_0| > |Z_1(1) - S_1|.$$

For the same reasons, for all $l = 1, \dots, j - 1$

$$|Z_l(1) - S_l| > |Z_l(2) - S_l| > \dots > |Z_l(n_l) - S_l| > |Z_{l+1}(1) - S_l|$$

and

$$|Z_{l+1}(1) - S_l| > |Z_{l+1}(1) - S_{l+1}|, \quad a.s.$$

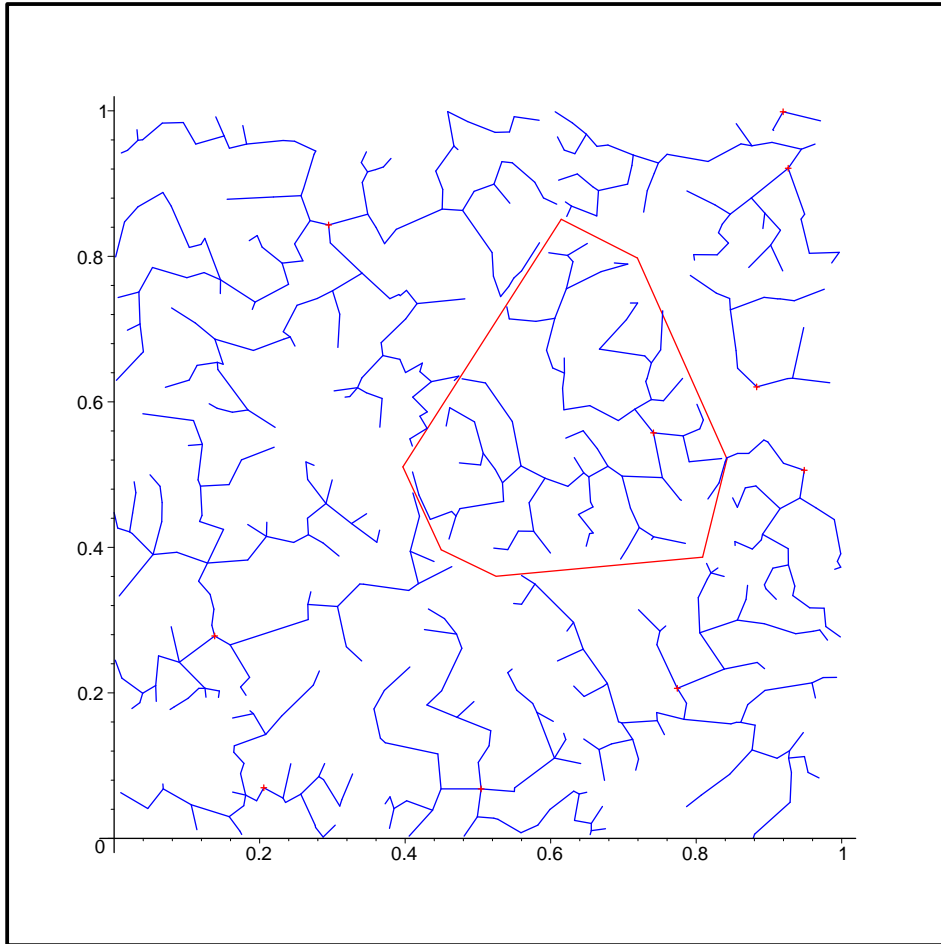


Figure 15: Local Voronoi radial spanning trees (in blue) of 600 nodes uniformly and independently distributed in the unit square, w.r.t 10 cluster heads (in red), also uniformly and independently distributed in the unit square. The Voronoi cell of one of the cluster heads is depicted in red.

In addition

$$|Z_j(1) - S_j| > |Z_l(2) - S_l| > \cdots > |Z_j(k) - S_j| = |X - S_0|.$$

Hence a contradiction. □

Let \mathcal{L}_n denote the total length of all edges from nodes in V_n . Let E_0 denote the Palm probability w.r.t. N_0 . We have

$$\mathcal{L}_n = \sum_m \mathbf{1}(T_m^1 \in V_n) L_m,$$

where L_m is the length of the link that connects T_m^1 to its ancestor. Using the fact that $T_m^1 \in V_n$ iff $N_0(B(T_m^1, |T_m^1 - T_n^0|)) = 0$ and the fact that $L_m > u$ with $u < |T_m^1 - T_n^0|$ iff $N_1(B(T_m^1, u) \cap B(T_n^0, |T_m^1 - T_n^0|)) = 0$, we get from Campbell's formula that

$$E_0 \left(\sum_m \mathbf{1}(T_m^1 \in V_n) L_m \right) = 2\pi\lambda_1 \int_{r=0}^{\infty} e^{-\lambda_0\pi r^2} \left(\int_{u=0}^r e^{-\lambda_1 M(r,u)} du \right) r dr,$$

with $M(r, u)$ the lune defined in §3.1. Hence

$$E_0(\mathcal{L}_0) = 2\pi\lambda_1 \int_{r=0}^{\infty} e^{-\lambda_0\pi r^2} \left(\int_{u=0}^r e^{-\lambda_1 M(r,u)} du \right) r dr. \quad (51)$$

7.3 Open Problems

The local geometry of the RST is rather well understood. Unfortunately, the distribution of the degree of a vertex is still unknown. It would be appealing to compute this distribution at least in the DSF. In contrast with what happens in the Minimal Spanning Tree, the degree is not upper bounded and so the moments of this distribution could be large.

The laws of large numbers we have found do not rely heavily on the assumption that N is a PPP. It is an open question to prove that the same type of results holds for a large class of ergodic point processes.

Properly scaled, the path $R(x)$ of successive ancestors of x in the DSF, converges weakly toward the Brownian Motion. An interesting problem is to find a functional central limit theorem for $R_0(x)$. Along this line, we may prove that the DSF converges weakly toward the Brownian Web. Proving a weak limit for the RST is a challenging question.

8 Appendix

8.1 Distribution for the n^{th} point of the PPP

We will denote by T_n the n -th point of the point process when sorting points according to their distance to the origin. For a bounded Borel set A , let

$$N(A) = \sum_n \mathbf{1}(T_n \in A).$$

We will denote the angle of T_n by ϕ_n and its norm by $|T_n| = \nu_n$.

The sequence $\{\phi_n\}$ is i.i.d., uniform on $(0, 2\pi)$ and independent of the sequence $\{\nu_n\}$.

The random variable ν_n^2 has a Gamma distribution of parameter $(n, \pi\lambda)$ and the sequence $\{\nu_n\}$ is a Markov chain with kernel of density

$$K(y, t) = 2\pi\lambda t e^{-\lambda\pi(t^2 - y^2)}, \quad t \geq y.$$

The Markov property is immediate from the definition of Poisson point processes. In addition, by a direct martingale argument

$$E\left(e^{\lambda(1-z)\pi(\nu_{n+1}^2 - y^2)} \mid \nu_n = y\right) = z^{-1}.$$

Hence

$$E\left(e^{-u\nu_{n+1}^2} \mid \nu_n = y\right) = e^{-uy^2} \frac{\lambda\pi}{u + \lambda\pi},$$

so that conditioned on $\nu_n = y$, ν_{n+1}^2 is the sum of y^2 and of an exponential random variable of parameter $\lambda\pi$. Hence ν_n^2 has a Gamma distribution of parameter $(n, \pi\lambda)$ indeed. In addition, the conditional density of ν_{n+1} given $\nu_n = y$ is

$$f_n(t, y) = 2\pi\lambda t e^{-\lambda\pi(t^2 - y^2)}, \quad t \geq y.$$

Let $\gamma_{n,\pi}$ be the density of a Gamma distribution of parameter (n, π) ; let $L_n = |T_n - \mathcal{A}(T_n)|$, we have :

$$\begin{aligned}
 P(L_n \geq r) &= P(\nu_n \geq r; N(B(T_n, r) \cap B(0, \nu_n)) = 0) \\
 &= \int_{r^2}^{+\infty} P(N(B(T_n, r) \cap B(0, \sqrt{t})) = 0 | \nu_n^2 = t) \\
 &\quad \gamma_{n,\pi}(t) dt \\
 &= \int_{r^2}^{+\infty} \left(1 - \frac{M(\sqrt{t}, r)}{\pi t^2}\right)^{n-1} \gamma_{n,\pi}(t) dt,
 \end{aligned}$$

The same type of computation can be done on the distribution of the edge $(T_n, \mathcal{A}(T_n))$ or for $D_n = ED(T_n)$.

8.2 Radial Spanning Tree with L^∞ -norm

In the L_∞ case, if $X = (t \cos \theta, t \sin \theta)$ then for $r \leq |X|_\infty = t \max(|\cos(\theta)|, |\sin(\theta)|)$,

$$M(X, r) = 2r^2 \mathbf{1}(r < g(X)) + (r^2 + rg(X)) \mathbf{1}(r \geq g(X))$$

with

$$g(X) = t(\max(|\cos \theta|, |\sin \theta|) - \min(|\cos \theta|, |\sin \theta|))$$

(see Figure 16).

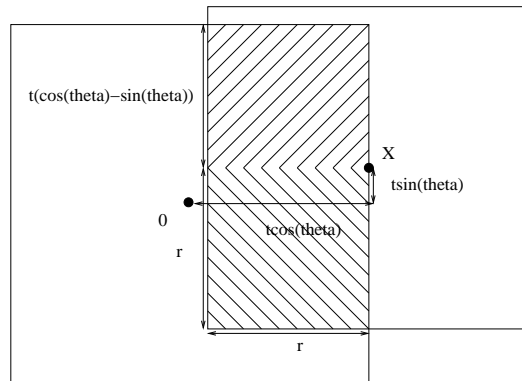


Figure 16: The L_∞ lune.

In addition, when denoting by $L(X)$ the L_∞ distance of point X to its parent node in the tree, we still have

$$P(L(X) \geq r) = \mathbf{1}(r \leq |X|_\infty) e^{-M(X,r)}.$$

8.3 Tail Inequality for Sums of Non-negative Random Variables

Lemma 14 *Let $(X_k)_k$ be a sequence of real random variables and $\{\mathcal{F}_k\}_k$ a filtration of this process. If $E(X_{n+1}|\mathcal{F}_n) = 0$ and $P(|X_{n+1}| \geq t|\mathcal{F}_n) \leq C_1 \exp(-C_0 t)$ then for all $t_0 > 0$, there exists positive constants C_0, C_1 such that for all $t \geq t_0$*

$$P\left(\left|\frac{1}{n} \sum_{k=1}^n X_k\right| \geq t\right) \leq C_1 e^{-C_0 n t}.$$

Proof This lemma relies on a classical computation on large deviations, we only give a sketch of the proof. Let $\Lambda_n(\lambda) = \ln E(e^{\lambda X_n}|\mathcal{F}_{n-1})$ and $\Lambda_n^*(t) = \sup_\lambda \lambda t - \Lambda_n(\lambda)$, the Fenchel-Legendre transform of Λ_n . With have $\Lambda_n^*(0) = 0$, the condition $P(|X_{n+1}| \geq t|\mathcal{F}_n) \leq C_1 \exp(-C_0 t)$ ensures that for $t \neq 0$, $\Lambda_n^*(t)$ is positive and lower bounded uniformly in n by a positive C_0 . For $t \geq 0$, Λ_n^* is non-decreasing and convex (refer to [6]), hence if $t \geq t_0 > 0$, $\Lambda_n^*(t) \geq t \frac{\Lambda_n^*(t_0)}{t_0} \geq t C_0$. As usual for upper bounds in Large Deviation, the rest of the proof follows from Chernoff's inequality. \square

8.4 Some Tail Inequalities in the GI/GI/ ∞ Queue

This section uses the classical notation of queueing theory. This leads to conflicts with some of the notation used elsewhere in the paper. This should not lead to difficulties as only the results stated in Lemma 15 will actually be used.

Let $\{\sigma_n, \tau_n\}, n \in \mathbb{Z}$, be an i.i.d. sequence of $\mathbb{R}_+ \times \mathbb{R}_+$ -valued random variables representing the service times and inter-arrival times in a GI/GI/ ∞ queue. For n fixed, the random variables σ_n and τ_n are possibly dependent. We set $T_0 = 0$ as the arrival time of customer 0; for $n \geq 1$, $T_n = \sum_{k=0}^{n-1} \tau_k$ is the arrival time of the n^{th} customer. Let $Y \in \mathbb{R}_+$ be a non-negative initial

condition, independent of the $\{\sigma_n, \tau_n\}$ sequence. We set $W_0^{[Y]} = Y$, and for $n \geq 1$, we define

$$\begin{aligned} W_n^{[Y]} &= \max \left(Y - \sum_{k=0}^{n-1} \tau_k, \max_{2 \leq i \leq n} \sigma_{i-1} - \sum_{k=i-1}^{n-1} \tau_k \right)^+ \\ &= \max \left(Y - (T_n - T_0), \max_{2 \leq i \leq n} \sigma_{i-1} - (T_n - T_{i-1}) \right)^+. \end{aligned}$$

The random variable $W_n^{[Y]}$ is the largest residual service time just before the arrival of the n^{th} customer in the GI/GI/ ∞ queue with initial condition Y .

The following additional assumptions are made:

- There exist constants C_0, C_1 such that : $P(\tau_1 \geq t) \leq C_1 \exp(-C_0 t)$, $P(\sigma_1 \geq t) \leq C_1 \exp(-C_0 t)$ and $P(Y > t) \leq C_1 \exp(-C_0 t)$;
- The support of σ_1 is \mathbb{R}_+ .

The Loynes' sequence $\{M_n\}$ of this GI/GI/ ∞ queue is defined by $M_0 = 0$ and

$$M_n = \max_{-n+1 \leq i \leq 0} (\sigma_{i-1} - \sum_{k=i-1}^{-1} \tau_k)^+, \quad n \geq 1.$$

This sequence is non-decreasing in n and it a.s. converges to

$$M = \sup_{i \leq 0} (\sigma_{i-1} - \sum_{k=i-1}^{-1} \tau_k)^+. \quad (52)$$

The random variable M is a.s. finite. Indeed, we can easily obtain a stronger assertion when using the following inequality: for all $s > 0$,

$$E \exp(s \sup_{i \leq 0} (\sigma_{i-1} - \sum_{k=i-1}^{-1} \tau_k)^+) \leq 1 + \sum_{i \leq 0} E \exp(s(\sigma_{i-1} - \sum_{k=i-1}^{-1} \tau_k)).$$

From this and Chernoff's inequality, we deduce that

$$P(M > t) \leq C_1 e^{-C_0 t}, \quad (53)$$

for some constants C_0, C_1 .

Now, we define :

$$\nu(Y) = \nu = \inf\{n \geq 2 : Y - \sum_{k=0}^{n-1} \tau_k < 0\}. \quad (54)$$

From time ν on, the initial workload does not count anymore, i.e. for $n \geq \nu$ $W_n^{[Y]} = \max_{2 \leq i \leq n} (\sigma_{i-1} - T_n + T_{i-1})^+$. Note that ν has the same distribution as

$$\nu' = \max\{n \leq -1 : Y - \sum_{k=n}^{-1} \tau_k < 0\}.$$

More generally,

$$\left(\sum_{k=0}^{\nu-1} \tau_k, \sum_{k=1}^{\nu-1} \tau_k, \dots, \tau_{\nu-1} \right)$$

and

$$\left(\sum_{k=-\nu'}^{-1} \tau_k, \sum_{k=-\nu'+1}^{-1} \tau_k, \dots, \tau_{-1} \right)$$

have the same law, which implies that $M_{\nu'}$ and $W_{\nu'}^{[Y]}$ have the same distribution. Since $M_{\nu'} \leq M$, we have

$$W_{\nu'}^{[Y]} \leq_{st} M. \quad (55)$$

Note that this bound is uniform in Y .

The upper bound in Cramer's Theorem (Chernoff's inequality) applied to the sequence $\{\tau_n\}$ gives

$$P(\nu > n) = P\left(\sum_{k=0}^{n-1} \tau_k < Y\right) \leq E \exp(-n\Lambda^*(Y/n) | \mathcal{F}_0),$$

where Λ^* is the Fenchel-Legendre transform of $s \rightarrow \ln E \exp(s\tau_1)$ and \mathcal{F}_0 is the σ -field generated by Y .

Under the tail assumption on τ_1 , for $t \neq E\tau_1$, $\Lambda^*(t) > 0$. Let $t_0 < E\tau_1$; since Y is such that $P(Y > t) \leq C_1 \exp(-C_0 t)$, we have

$$P(\nu > n) \leq P(Y > nt_0) + e^{-n\Lambda^*(t_0)} \leq C_1 e^{-C_0 n}, \quad (56)$$

for some positive constants C_0, C_1 , uniformly on the initial conditions Y .

Let \mathcal{F}_n be the σ -field generated by the random variables Y and $\{(\sigma_k, \tau_k), k = 0, \dots, n-1\}$. The sequence $\{W_n^{[Y]}\}$ is a $\{\mathcal{F}_n\}$ -Markov chain and the random variables

$$\nu_{n+1} = \nu_n + \nu(W_{\nu_n}^{[Y]}), \quad n \geq 1,$$

with $\nu(W)$ defined in (54) and with $\nu_1 = \nu = \nu(Y)$, are $\{\mathcal{F}_n\}$ -stopping times. Using what precedes, one gets by induction that each ν_n is a.s. finite and that for all n ,

$$P(\nu_{n+1} - \nu_n > m | \mathcal{F}_{\nu_n}) = P(\nu_{n+1} - \nu_n > m | W_{\nu_n}^{[Y]}) \leq C_1 e^{-C_0 m}, \quad \forall m \quad (57)$$

$$P(W_{\nu_{n+1}}^{[Y]} > x | \mathcal{F}_{\nu_n}) = P(W_{\nu_{n+1}}^{[Y]} > x | W_{\nu_n}^{[Y]}) \leq P(M > x), \quad \forall x. \quad (58)$$

Using (57) and a Chernoff type bound, one gets

$$P(\nu_n > \alpha n) \leq C_1 e^{-C_0 n}, \quad (59)$$

for some positive constants α, C_0, C_1 .

Consider now the $\{\mathcal{F}_n\}$ -stopping time

$$\theta(Y) = \theta = \inf\{n \geq 1 : (\sigma_{n-1} - \tau_{n-1})^+ = W_n^{[Y]}\}. \quad (60)$$

Since $W_\nu^{[Y]} \leq_{st} M$, the assumption on the support of σ_n implies

$$P(\theta \leq \nu_1 + 2) \leq P(M + \sigma_{\nu_1} - \tau_{\nu_1} - \tau_{\nu_1+1} \leq \sigma_{\nu_1+1} - \tau_{\nu_1+1}) = \delta > 0.$$

In the same vein, when using (59) and (58), one gets that

$$P(\theta > n) \leq (1 - \delta)^{\lfloor n/\alpha \rfloor} + P(\nu_{\lfloor n/\alpha \rfloor} > n) \leq C_1 e^{-C_0 n},$$

for some positive constants C_0, C_1 .

We define the sequence $\theta_0 = 0, \theta_1 = \theta(Y)$ and

$$\theta_{n+1} = \inf\{k > \theta_n : \sigma_{k-1} - \tau_{k-1} = W_k^{[Y]}\}, \quad n \geq 1. \quad (61)$$

Let $\xi_n = \mathbf{1}(W_{\nu_{n+2}}^{[Y]} = \sigma_{\nu_{n+1}} - \tau_{\nu_{n+1}})^+$. We have $P(\xi_n = 1 | \mathcal{F}_{\nu_{n-1}}) \geq \delta$ for all n . Let $0 < \epsilon < \delta$, we have:

$$\begin{aligned} P(\theta_n > (\delta - \epsilon)n/\alpha) &\leq P(\nu_{\lfloor n/\alpha \rfloor} > n) + P\left(\sum_{k=1}^{\lfloor n/\alpha \rfloor} \xi_k < n(\delta - \epsilon)/\alpha\right) \\ &\leq C_1 e^{-C_0 n}, \end{aligned} \quad (62)$$

when using (59) and a Chernoff type bound.

We have proved the following lemma:

Lemma 15 *Let θ_n be the stopping time defined in Equation (61). Under the foregoing probabilistic assumptions on Y , (τ_n) and (σ_n) , there exists $\beta > 0$ such that for all k :*

$$P(\theta_{k+1} - \theta_k > n) \leq C_1 e^{-C_0 n} \quad \text{and} \quad P(\theta_n > \beta n) \leq C_1 e^{-C_0 n},$$

for some positive constants C_0, C_1 .

Acknowledgments

The authors would like to thank Marc Lelarge and Venkat Anantharam for their comments and suggestions on this paper. This research was funded in part by the EuroNGI network.

Mathematical Notation

- $\mathcal{A}(X)$: the ancestor of point at X in the RST - see §2.2;
- $\mathcal{A}^k(X)$: the ancestor of level k of point at X in the tree - see §2.2;
- $\mathcal{A}_d(X)$: the ancestor of point at X in the DSF;
- $B(x, r)$: the open ball of radius r and center x .
- $C(X)$: the number of links of the tree that cross the circle of radius $|X|$ - see §3.5;
- C_0 : a small constant - see §2.2;
- C_1 : a large constant - see §2.2;
- $D(X)$: the degree of a point located at X - see §2.3.2;
- D_n : the domain (14) associated with the n -th point of the path;
- $D_{\max}(x)$: the maximal deviation of $R_0(x)$ and the x axis - see Equation (32);
- $D_{\max}(x, x')$: the maximal deviation of $R(x)$ between x' and x defined in Equation (31);
- $\{\Phi_n\}$: Markov chain with state in the space of finite point processes - Equation (18);
- \mathcal{H} : the right half-plane ($x > 0$);
- $\mathcal{H}^-(t)$: the left half-plane ($x < t$);
- $H(X)$: the number of hops from point X to the origin - see §2.3.2;
- $L(X)$: the length of the link connecting a point located at X to its ancestor in the RST - see §2.3.2;
- N : the underlying Poisson point process;

- p : the mean stationary progress in a long path of the DSF - Equation (28);
- $P(X)$: the progress of the link from a point at X toward the origin - see §2.3.2;
- $R(x)$: the path from $(x, 0)$ in the DSF - see §4.3;
- $R_0(X)$: the path from X to 0 in the RST - see §2.2;
- \mathcal{S} : the small set of the Markov chain $\{\Phi_n\}$ - Equation (23);
- σ_A : return time of the Markov chain $\{\Phi_n\}$ to set A - Equation (19);
- \mathcal{T} : the RST;
- \mathcal{T}_d : the DSF;
- $\mathcal{T}(k)$: the subtree of the RST with nodes less than k generations away from the root;
- $\{T_n\}$: the points of N ;
- τ_n : the Markovian times in the sequence of successive ancestors of a point - Equation (16);
- ξ_n : the projection of $\mathcal{H} \setminus D_n$ on the x axis - Equation (17);

References

- [1] D. Aldous and J. M. Steele. The objective method: probabilistic combinatorial optimization and local weak convergence. 110:1–72, 2004.
- [2] K.S. Alexander. Percolation and minimal spanning trees in infinite graphs. *Annals of Probability*, 23:87–104, 1995.
- [3] K.B. Athreya and P. Ney. A new approach to the limit theory of recurrent markov chains. *Trans. Amer. Math. Soc.*, 245:493–501, 1978.
- [4] A.G. Bhatt and R. Roy. On a random directed spanning tree. *Advances in Applied Probability*, 36:19–42, 2004.
- [5] D.J. Daley and D. Vere-Jones. *An introduction to the Theory of Point Processes*. Springer Series in Statistics. Springer-Verlag, New-York, 1988.
- [6] A. Dembo and O. Zeitouni. *Large Deviations Techniques and Applications*. Applications of Mathematics. Springer-Verlag, New-York, 1998.
- [7] W. Feller. *An Introduction to Probability Theory and its Applications, vol. II*. Wiley Series in Probability and Mathematical Statistics. John Wiley & Sons Ltd., second edition, 1971.
- [8] P. A. Ferrari, L. R. G. Fontes, and Xian-Yuan Wu. Two-dimensional poisson trees converge to the brownian web. <http://arXiv.org/abs/math/0304247>, 2003.
- [9] P.A. Ferrari, C. Landim, and H. Thorisson. Poisson trees, succession lines and coalescing random walks. <http://arXiv.org/abs/math/0304247>, 2003.
- [10] L. R. G. Fontes, M. Isopi, C. M. Newman, and K. Ravishankar. The brownian web : Characterization and convergence. *Annals of Probability*, 32:2857–2883, 2004.
- [11] S. Gangopadhyay, R. Roy, and A. Sarkar. Random oriented trees : a model of drainage networks. *Annals in Applied Probability*, 14:1242–1266, 2004.

-
- [12] A. Gut. Convergence rates for probabilities of moderate deviations for sums of random variables with multidimensional indices. *Annals of Probability*, 8:298–313, 1980.
 - [13] C. Howard and C. Newman. Geodesics and spanning trees for euclidean first-passage percolation. *Ann. Probab.*, 29:577–623, 2001.
 - [14] S. Lee. The central limit theorem for euclidian minimal spanning trees. *The Annals of Applied Probability*, 7:996–1020, 1997.
 - [15] S. Meyn and R. Tweedie. *Markov Chains and Stochastic Stability*. Springer-Verlag, London, 1993.
 - [16] M. Penrose. *Random Geometric Graphs*. Oxford Studies in Probability. Oxford Univeristy Press, Oxford, 2003.
 - [17] M. Penrose and A. Wade. On the total length of the random minimal directed spanning tree. *preprint math.PR/0409201 from arxiv.org.*, 2004.
 - [18] M. Penrose and A. Wade. Random minimal directed spanning trees and dickman-type distributions. *Advances in Applied Probability*, 36:691–714, 2004.
 - [19] M. Penrose and J. Yukich. Limit theory for random sequential packing and deposition. *Annals of Applied Probability*, 12:272–301, 2001.
 - [20] M. Penrose and J. Yukich. Weak laws of large numbers in geometric probability. *Annals of Applied Probability*, 13:277–303, 2003.
 - [21] W. Rhee. A matching problem and subadditive euclidean functionals. *Annals of Applied Probability*, 3:794–801, 1993.
 - [22] J.M. Steele. *Probability Theory and Combinatorial Optimization*. NSF-CBMS Volume 69. SIAM, 1997.
 - [23] M. Talagrand. Concentration of measure and isoperimetric inequalities in product spaces. *Publications Mathematiques de l’I.H.E.S.*, 81:73–205, 1995.

- [24] B. Toth and W. Werner. The true self repelling motion. *Probability Theory and Related Fields*, 111:375–452, 1998.
- [25] J. Yukich. *Probability Theory of Classical Euclidean Optimization Problems*. Lecture Notes in Mathematics. Springer, 1998.



Unité de recherche INRIA Rocquencourt
Domaine de Voluceau - Rocquencourt - BP 105 - 78153 Le Chesnay Cedex (France)

Unité de recherche INRIA Futurs : Parc Club Orsay Université - ZAC des Vignes
4, rue Jacques Monod - 91893 ORSAY Cedex (France)

Unité de recherche INRIA Lorraine : LORIA, Technopôle de Nancy-Brabois - Campus scientifique
615, rue du Jardin Botanique - BP 101 - 54602 Villers-lès-Nancy Cedex (France)

Unité de recherche INRIA Rennes : IRISA, Campus universitaire de Beaulieu - 35042 Rennes Cedex (France)

Unité de recherche INRIA Rhône-Alpes : 655, avenue de l'Europe - 38334 Montbonnot Saint-Ismier (France)

Unité de recherche INRIA Sophia Antipolis : 2004, route des Lucioles - BP 93 - 06902 Sophia Antipolis Cedex (France)

Éditeur
INRIA - Domaine de Voluceau - Rocquencourt, BP 105 - 78153 Le Chesnay Cedex (France)
<http://www.inria.fr>
ISSN 0249-6399