



**HAL**  
open science

# Leaf/Wood discrimination in ULS LiDAR using Neural Network

Yuchen Bai, Jean-Baptiste Durand, Grégoire Vincent, Florence Forbes,  
Nicolas Barbier, Olivier Martin-Ducup

► **To cite this version:**

Yuchen Bai, Jean-Baptiste Durand, Grégoire Vincent, Florence Forbes, Nicolas Barbier, et al.. Leaf/Wood discrimination in ULS LiDAR using Neural Network. SilviLaser 2023, University College London, Gower Street, London, Sep 2023, London, United Kingdom. hal-04837412

**HAL Id: hal-04837412**

**<https://inria.hal.science/hal-04837412v1>**

Submitted on 19 Dec 2024

**HAL** is a multi-disciplinary open access archive for the deposit and dissemination of scientific research documents, whether they are published or not. The documents may come from teaching and research institutions in France or abroad, or from public or private research centers.

L'archive ouverte pluridisciplinaire **HAL**, est destinée au dépôt et à la diffusion de documents scientifiques de niveau recherche, publiés ou non, émanant des établissements d'enseignement et de recherche français ou étrangers, des laboratoires publics ou privés.



Distributed under a Creative Commons Attribution 4.0 International License

Yuchen Bai<sup>1,2</sup>, Jean-Baptiste Durand<sup>2,3</sup>, Grégoire Vincent<sup>3</sup>, Florence Forbes<sup>1,2</sup>,  
Nicolas Barbier<sup>3</sup>, Olivier Martin-Ducup<sup>3</sup>

<sup>1</sup>Inria

<sup>2</sup>Université Grenoble Alpes

<sup>3</sup>AMAP, Univ Montpellier, CIRAD, CNRS, INRAE, IRD

Title: LEAF/WOOD DISCRIMINATION IN ULS LIDAR USING NEURAL NETWORK

Abstract:

Separating leaf from wood returns in forest lidar point cloud is a commonly required pre-processing step to estimate leaf area or wood volume. This key step is particularly challenging in tall dense hyper-diverse evergreen forest

Unmanned aerial vehicle laser scanning (ULS) has emerged as a premium solution to collect high density point clouds ( $\sim 10^3/\text{m}^2$ ) rapidly over several hectares of forest. However, the level of detail remains much lower than what is typically achieved using multiple TLS positions ( $\sim 10^5/\text{m}^2$ ). In particular in the lower canopy.

In this study we compared three semantic segmentation procedures applied to TLS and DLS point cloud over one-ha of moist tropical forest in French Guiana.

Both point clouds were acquired in October 2021. A subset of 418 trees were manually isolated in the TLS point cloud and a semi-automatic segmentation of leaf and wood returns was conducted on each isolated tree. Labels were then transferred to the co-registered ULS point cloud based on nearest neighbors. These two datasets (TLS and ULS) were used as a reference to evaluate the three algorithms.

The three procedure to evaluate were 1) A geometric leaf-wood classification method (Lewos) 2) a deep learning (DL) approach (Forest Structural Complexity Tool: FSCT) and 3) A DL algorithm we developed. The latter was based on PointNet++ that combines convolution networks on 3D point clouds, quantitative information attached to each point and prior spatial and geometrical and topological information related to the neighbourhood of each point.

We compare the three models in terms of their performance in separating leaf from wood, in TLS and DLS point clouds. We further discuss which features of our DL approach allow it to outperform the other two methods for the designated task.

Figure:

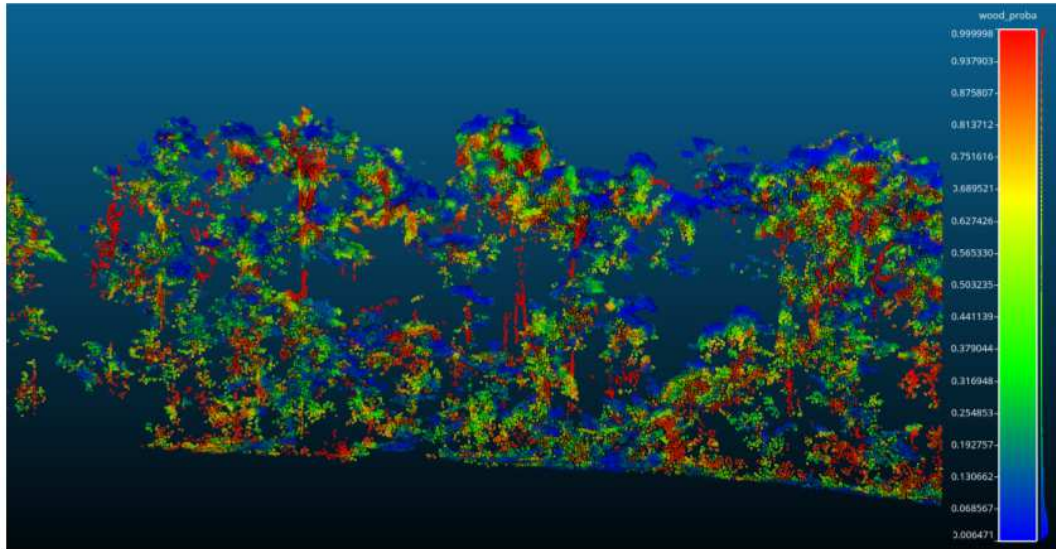


Fig. The prediction result of our deep learning model applying on ULS tropical forest data, where different colors indicate the probability of each point being a wooden point.