

Inria





*Large CFL explicit scheme for
nonlinear shallow water equations*

Antoine ROUSSEAU (Inria, Montpellier)

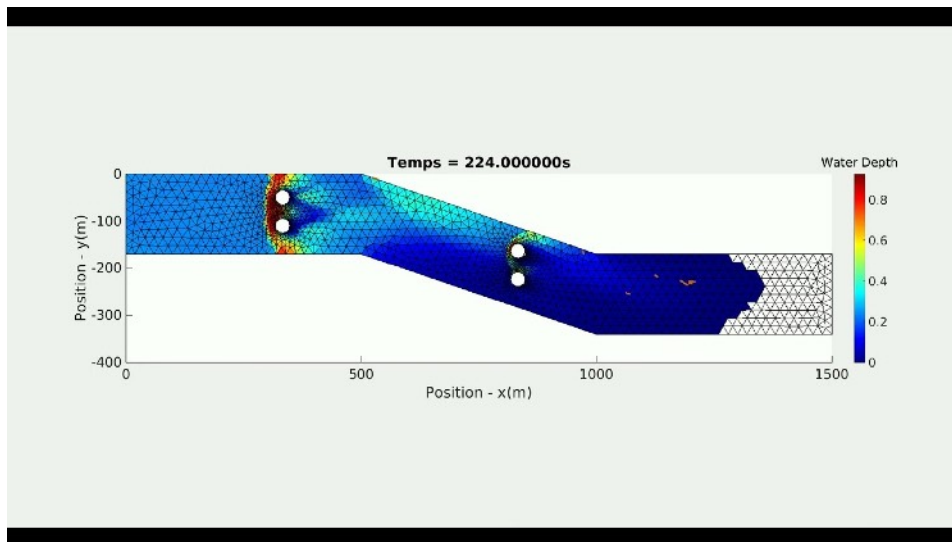
& Vincent Guinot (University of Montpellier)

References

 S. Soares Frazão and V. Guinot. An eigenvector-based linear reconstruction scheme for the shallow-water equations on two-dimensional unstructured meshes. *International Journal for Numerical Methods in Fluids*, 53(1):23–55, 2007.

 V. Guinot, A. Rousseau.
Large CFL explicit scheme for one-dimensional shallow water equations.
Preprint HAL, under review, 2023.

Currently implemented (in 2D) in sw2d.inria.fr



Thanks!