



HAL
open science

Using critical dynamics to capture processes underlying Brain-Computer Interface performance

Marie-Constance Corsi, Pierpaolo Sorrentino, Denis P Schwartz, Nathalie George, Laurent Hugueville, Ari E Kahn, Sophie Dupont, Danielle S Bassett, Viktor Jirsa, Fabrizio de Vico Fallani

► To cite this version:

Marie-Constance Corsi, Pierpaolo Sorrentino, Denis P Schwartz, Nathalie George, Laurent Hugueville, et al.. Using critical dynamics to capture processes underlying Brain-Computer Interface performance. NeuroFrance 2023, Société des Neurosciences, May 2023, Lyon, France. hal-04140131

HAL Id: hal-04140131

<https://inria.hal.science/hal-04140131>

Submitted on 24 Jun 2023

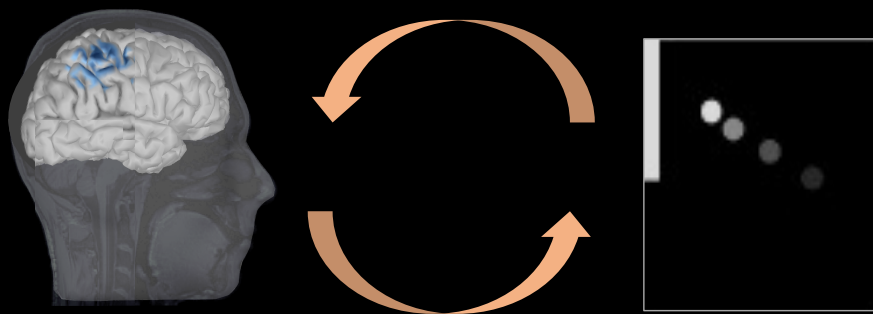
HAL is a multi-disciplinary open access archive for the deposit and dissemination of scientific research documents, whether they are published or not. The documents may come from teaching and research institutions in France or abroad, or from public or private research centers.

L'archive ouverte pluridisciplinaire **HAL**, est destinée au dépôt et à la diffusion de documents scientifiques de niveau recherche, publiés ou non, émanant des établissements d'enseignement et de recherche français ou étrangers, des laboratoires publics ou privés.



Distributed under a Creative Commons Attribution 4.0 International License

Using critical dynamics to capture processes underlying Brain-Computer Interface performance



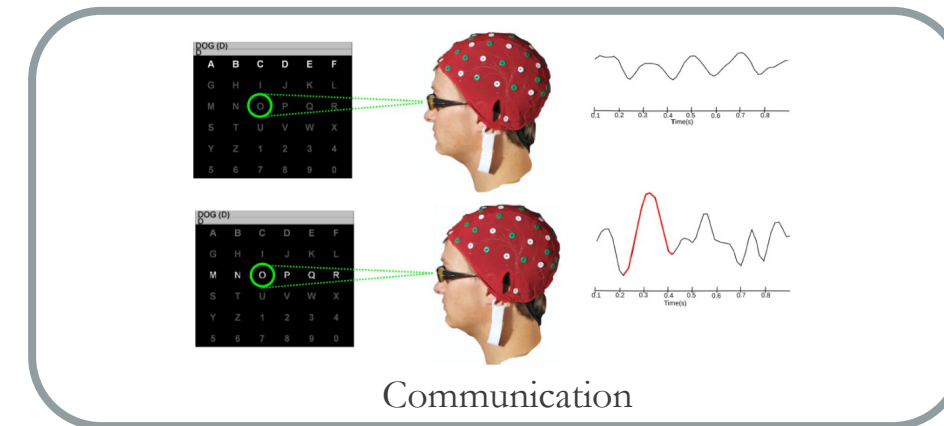
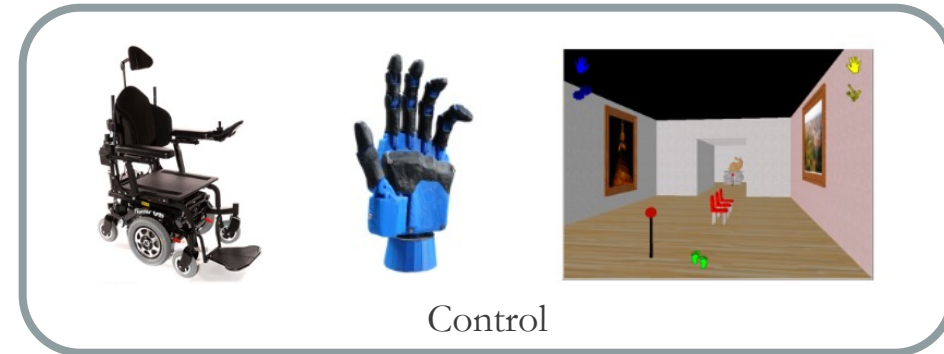
Marie-Constance Corsi*,

Inria-Paris Brain Institute, France

Pierpaolo Sorrentino*,

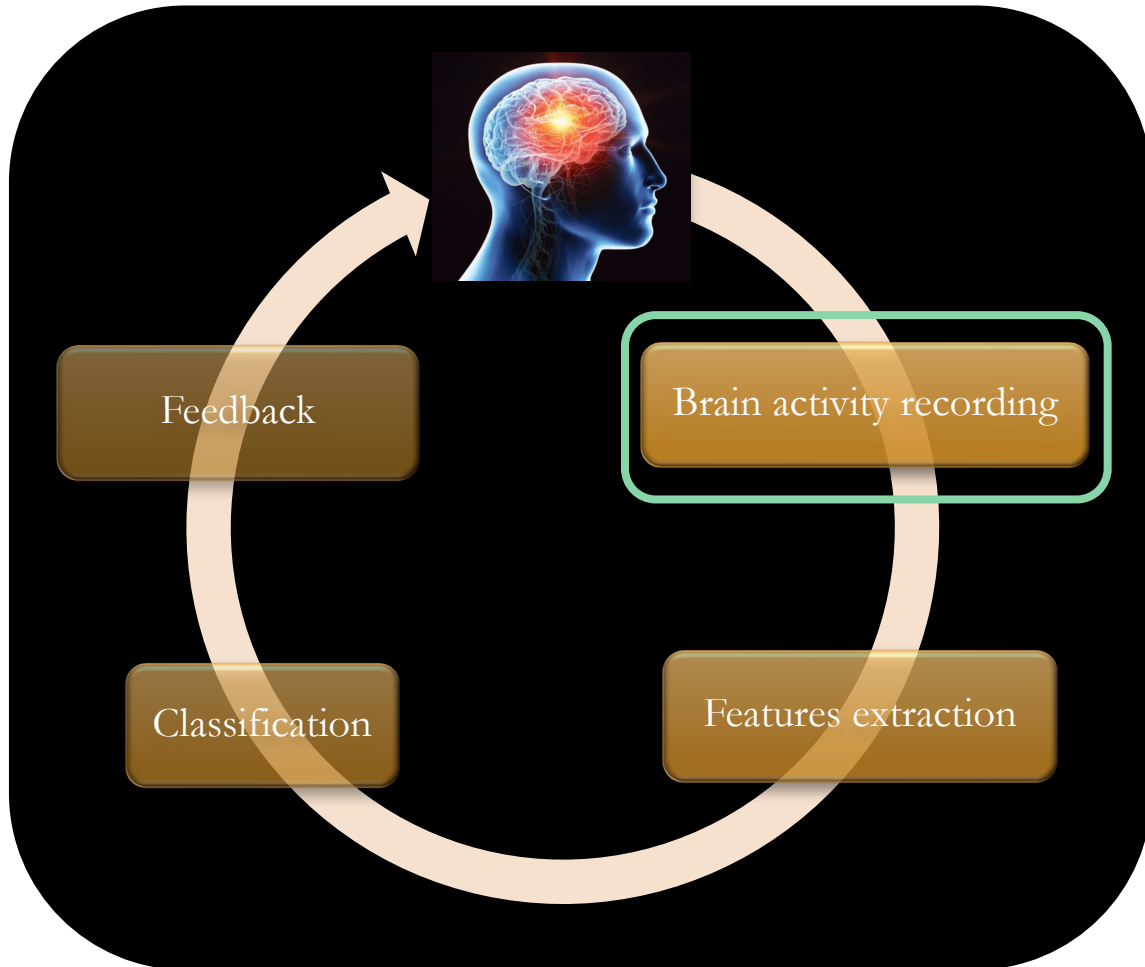
Institut de Neurosciences des Systèmes, France

What is a Brain-Computer Interface (BCI)?



Adapted from (Lotte et al, 2015)

Behind the magic...

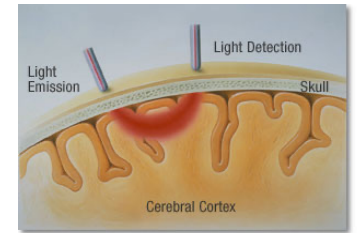


Non-invasive tools

EEG



NIRS



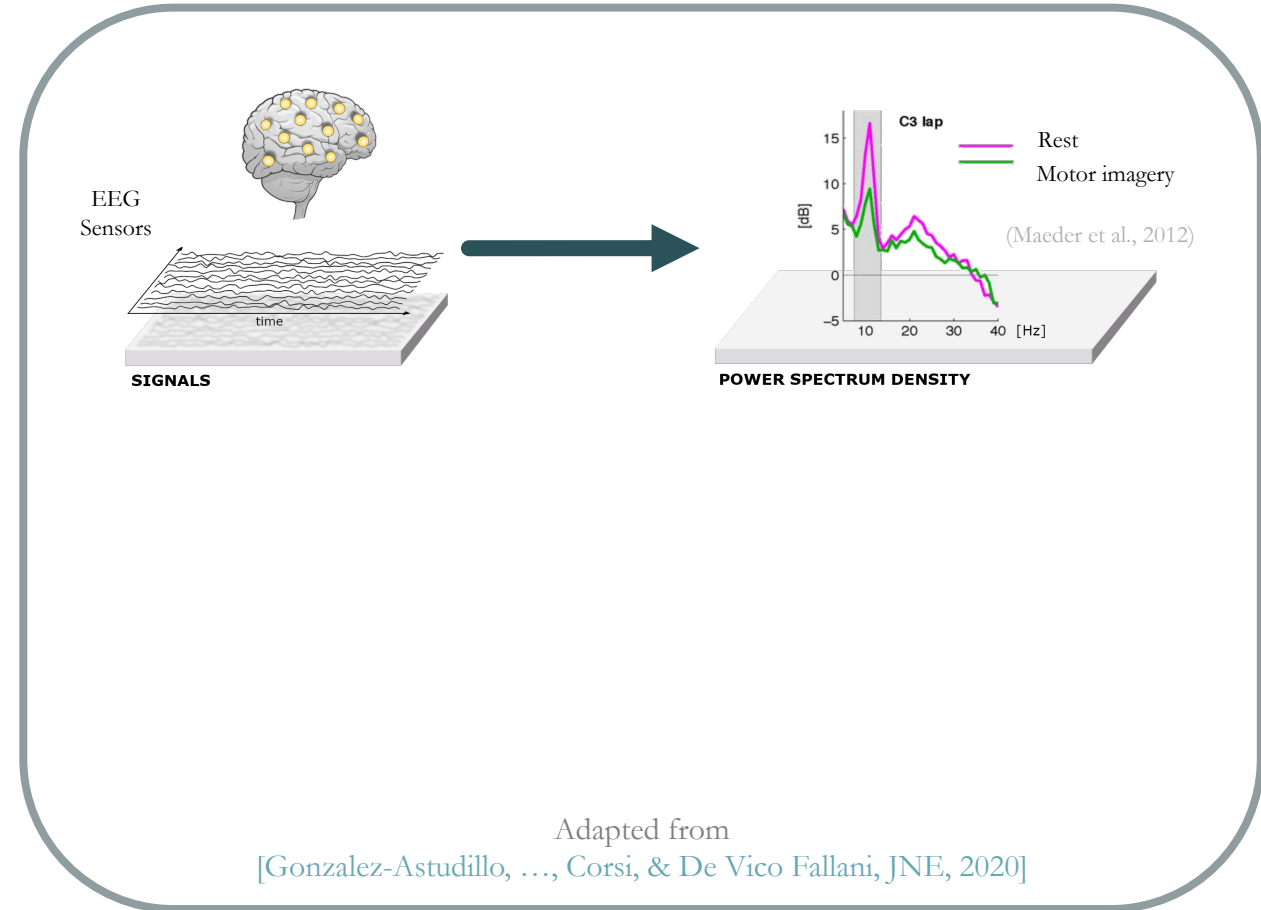
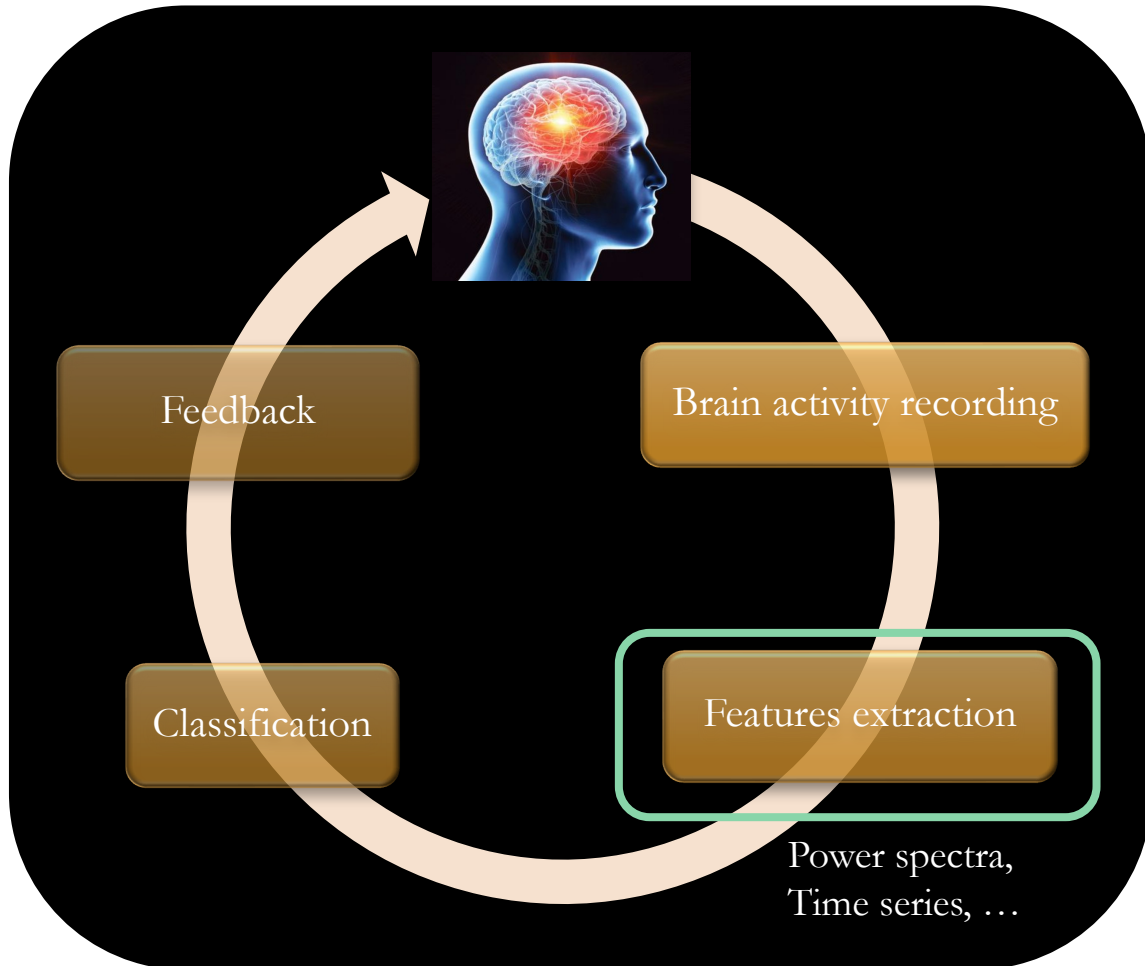
MEG



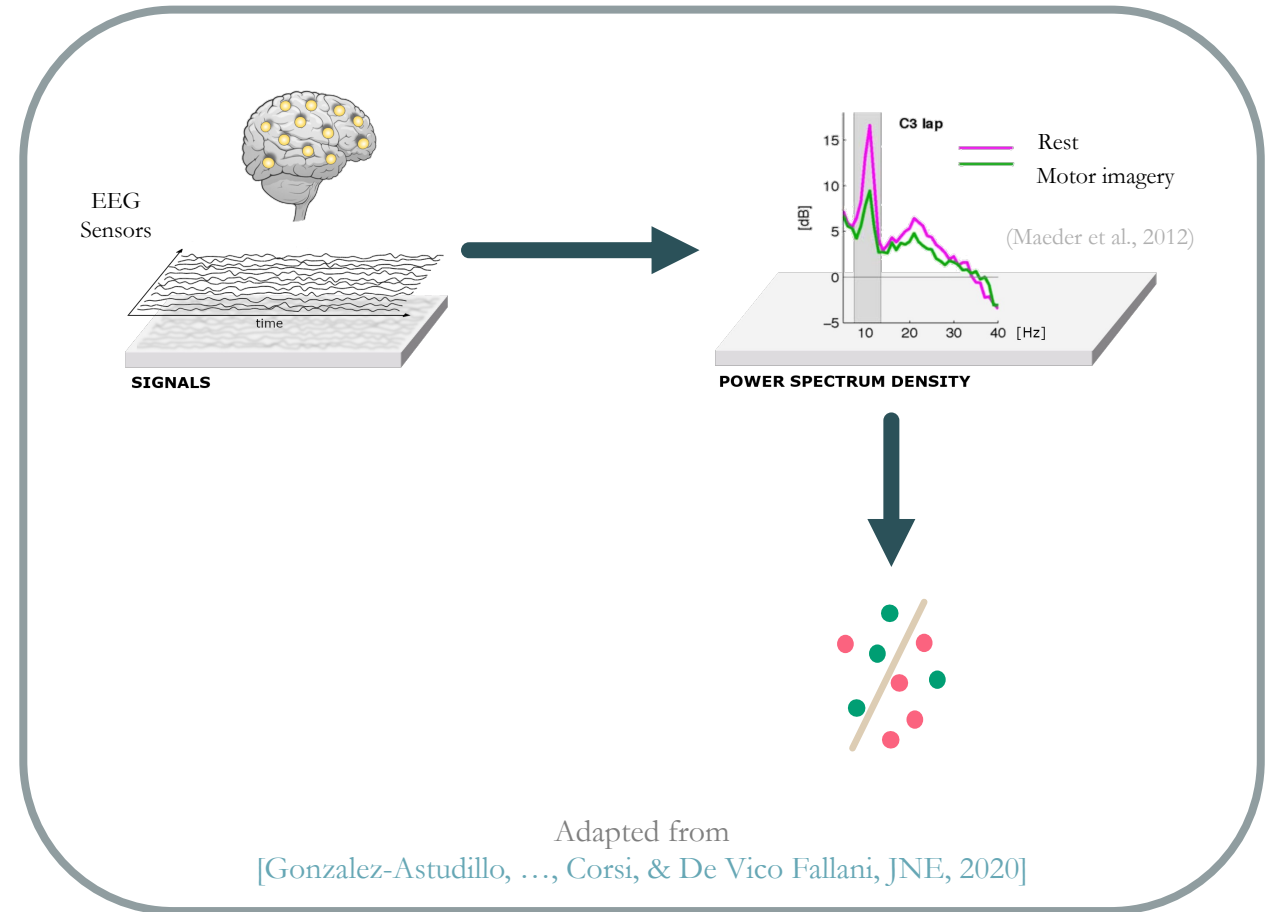
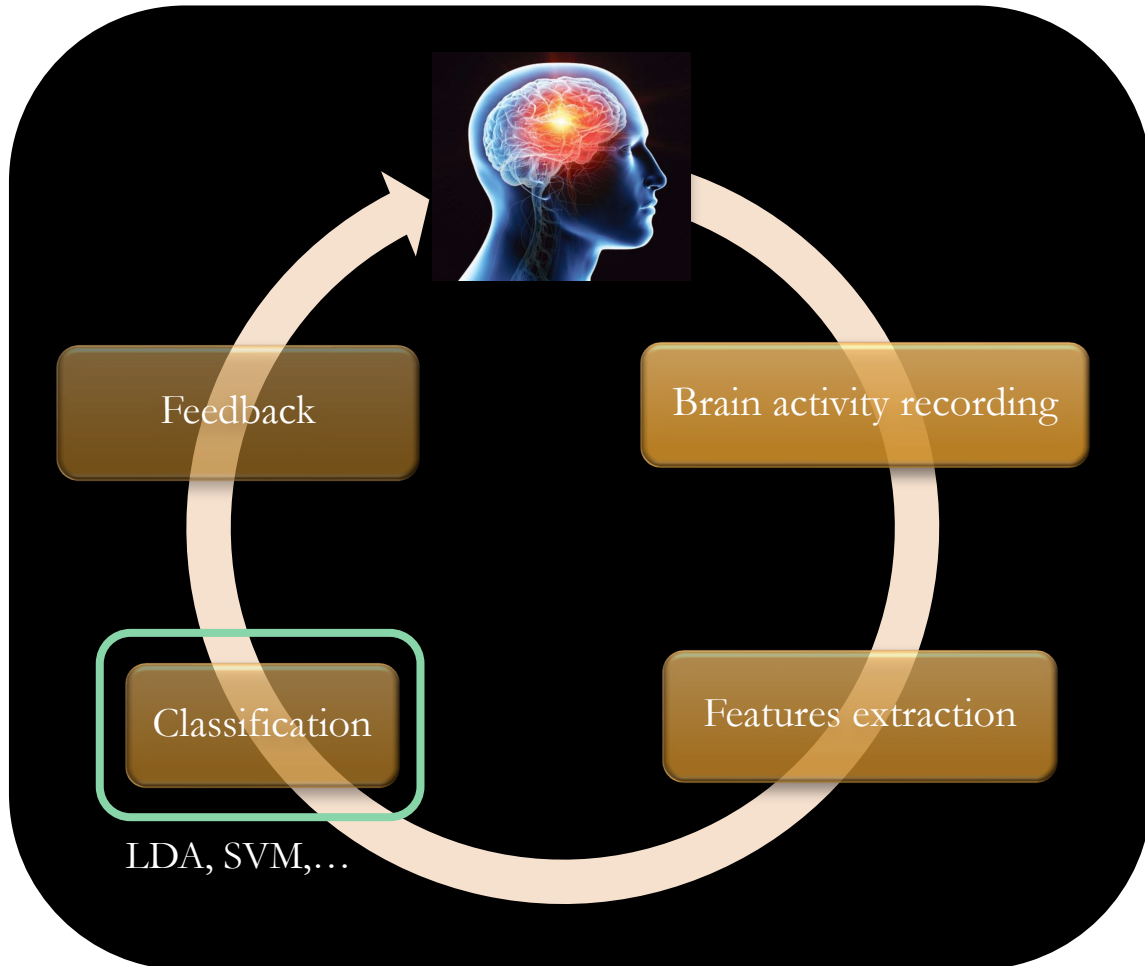
fMRI



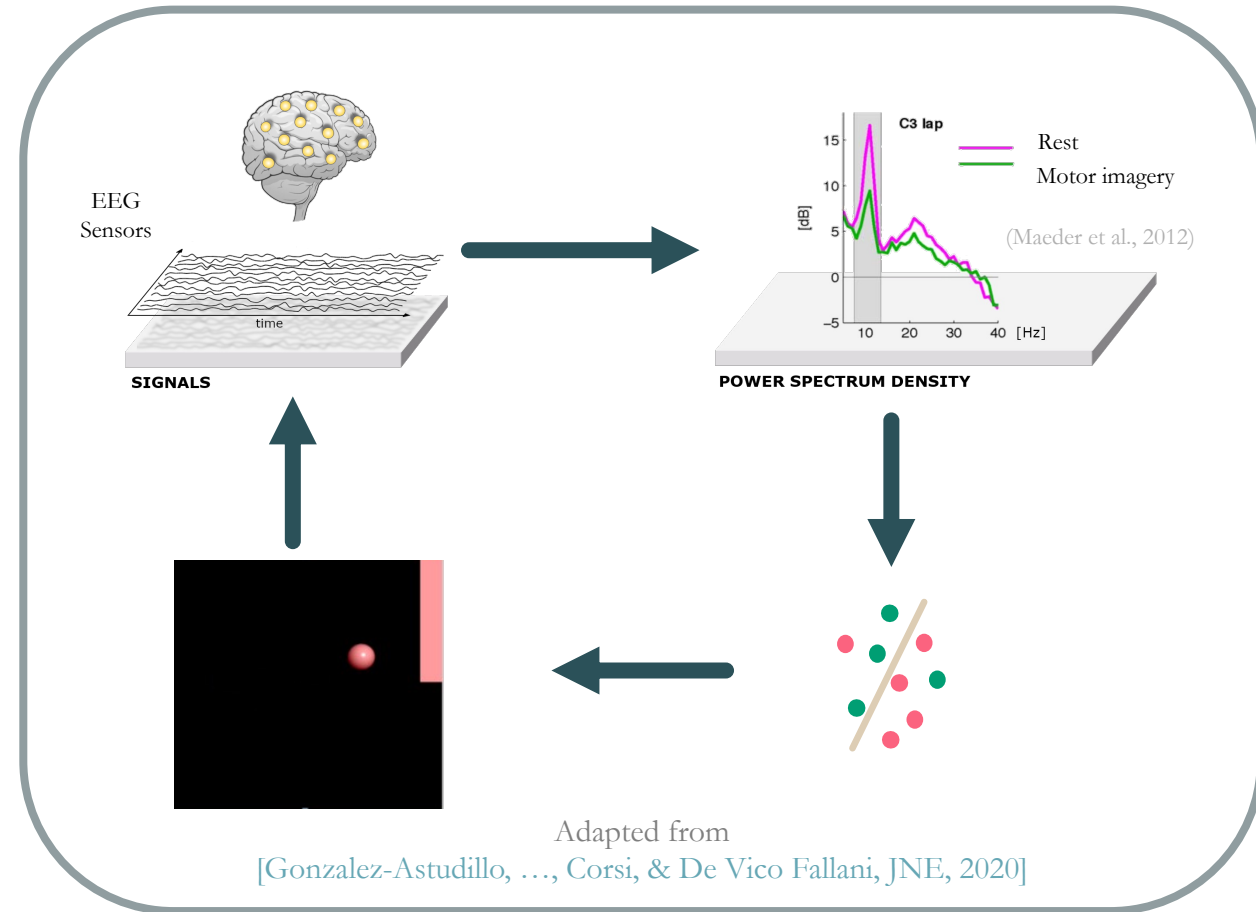
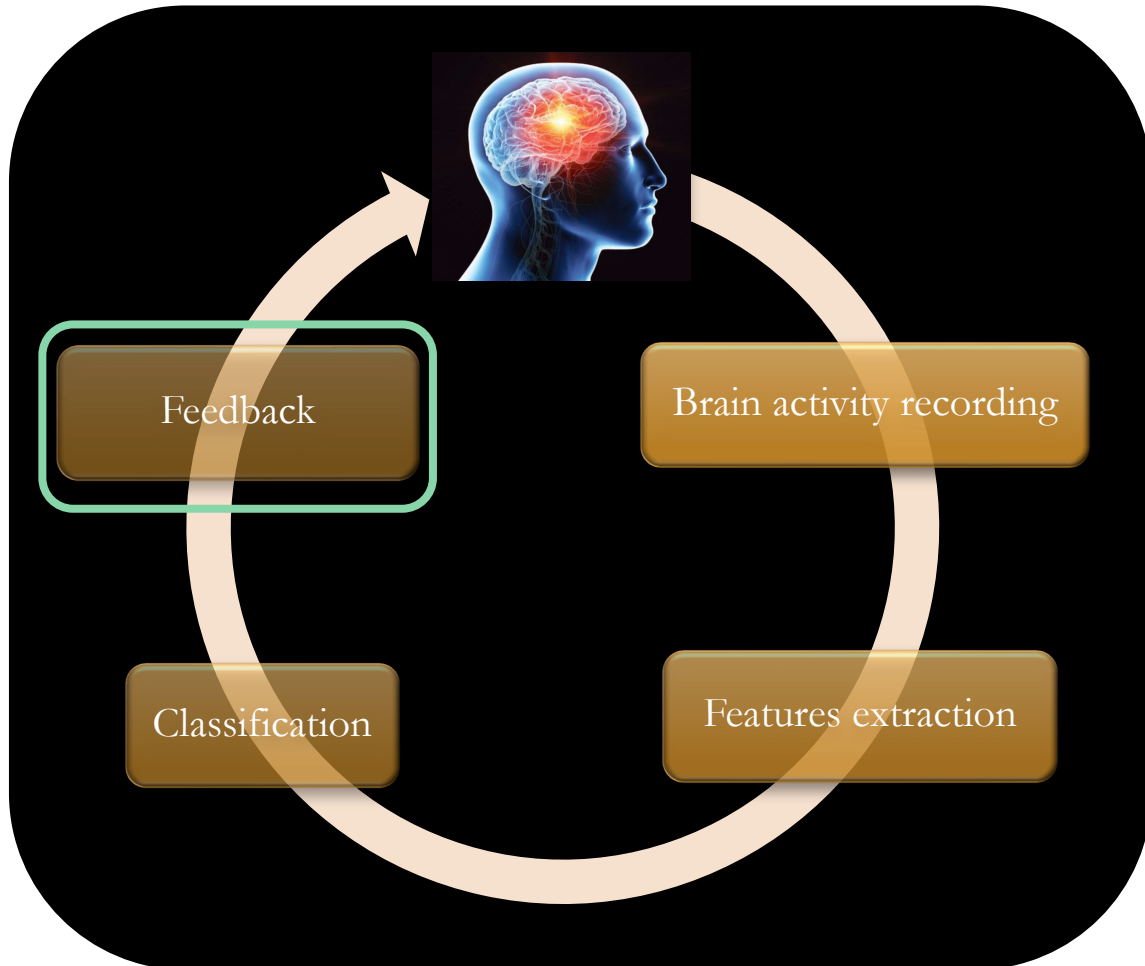
Behind the magic...

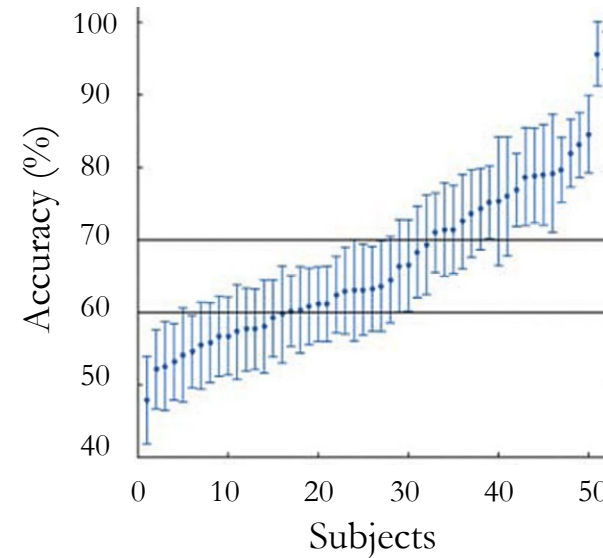
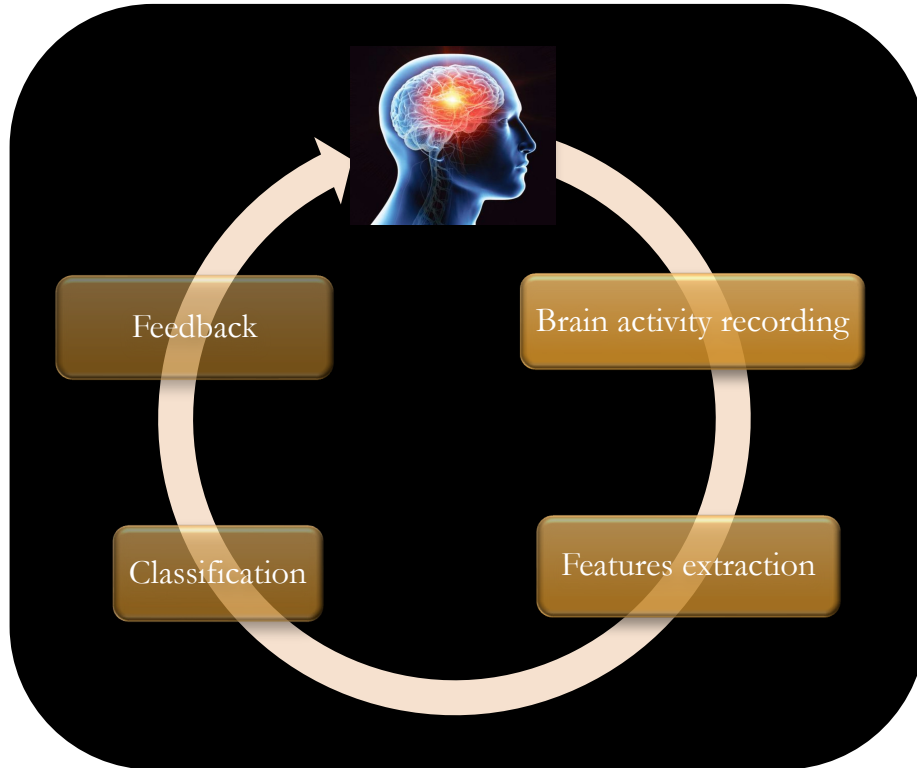


Behind the magic...



Behind the magic...





Adapted from (Ahn & Jun, 2015)

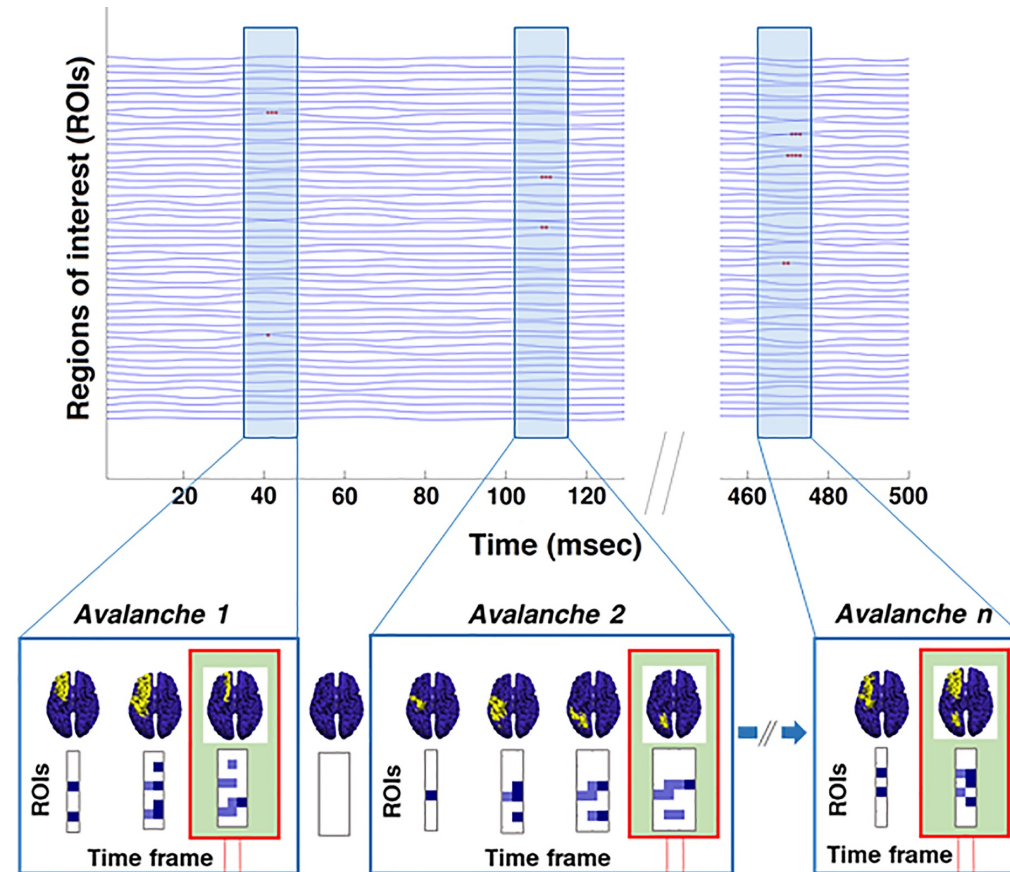
Problem:

Current BCIs fail to detect the mental intentions in ~30% of users – **BCI inefficiency** (Thompson, 2018)

⇒ Rely on local measurements of the brain activity

Capturing fast, non-linear brain dynamics

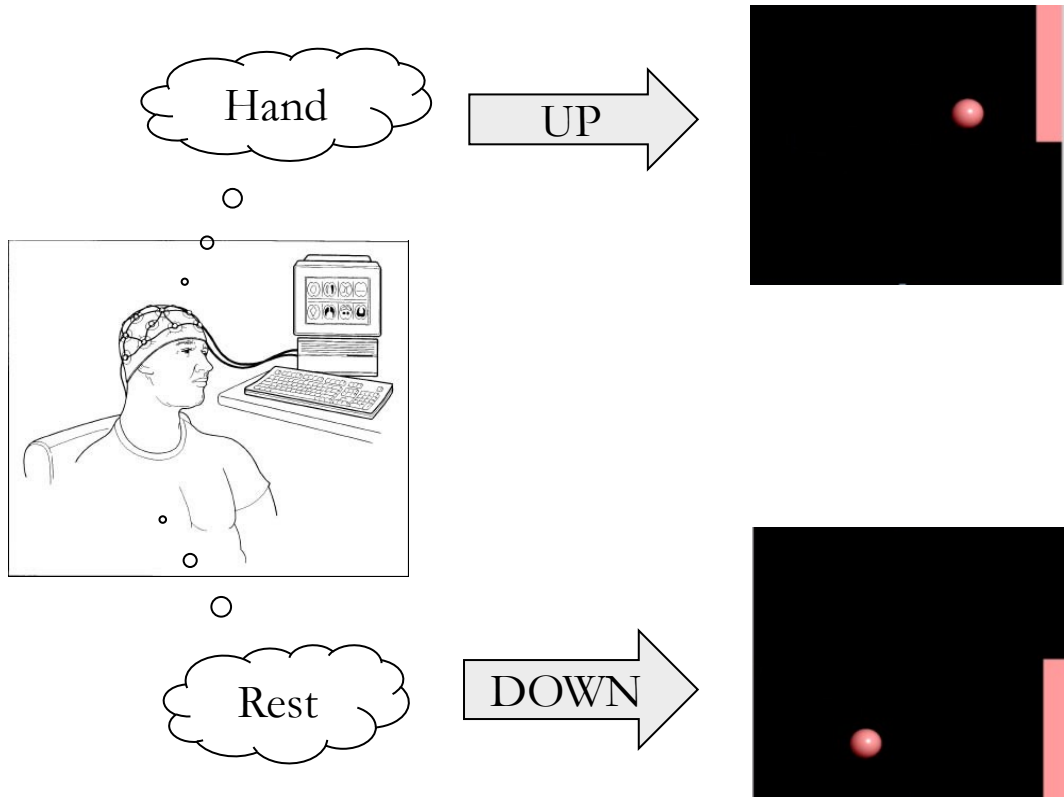
Neuronal avalanches: bursts of enhanced activity observed across neuroimaging modalities



Adapted from [Polverino et al, Neurology, 2022]

Hypothesis:

The neuronal avalanches could spread differently according to the task & provide original markers of BCI performance.

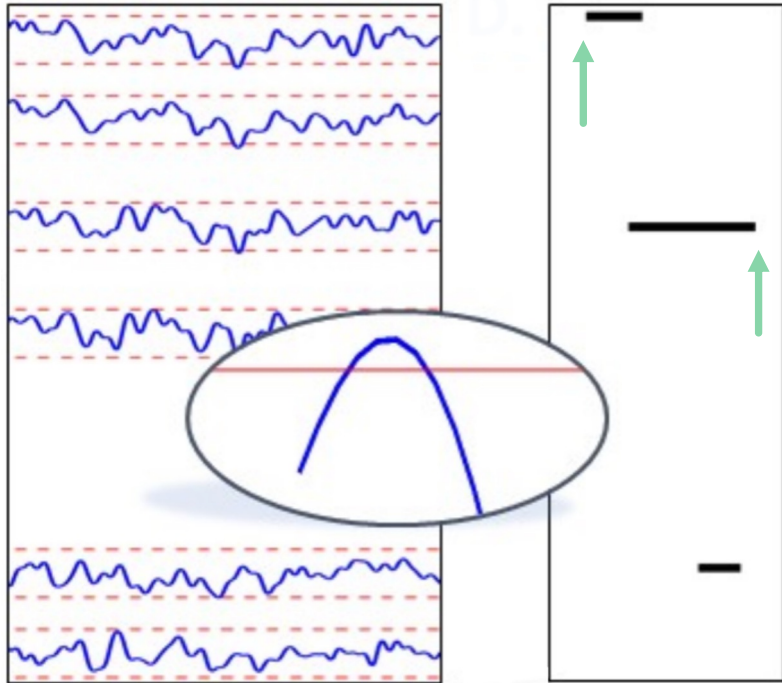


For a complete description of the protocol and the dataset, please refer to [\[Corsi et al, NeuroImage, 2020\]](#)

Objective:

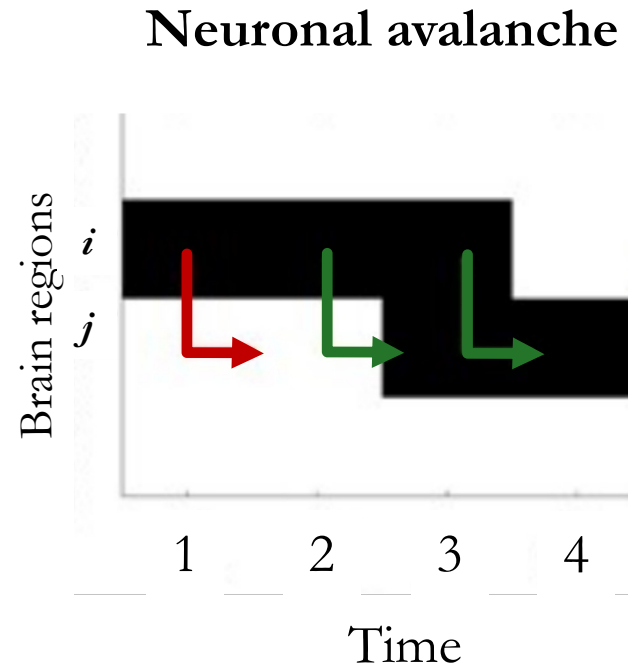
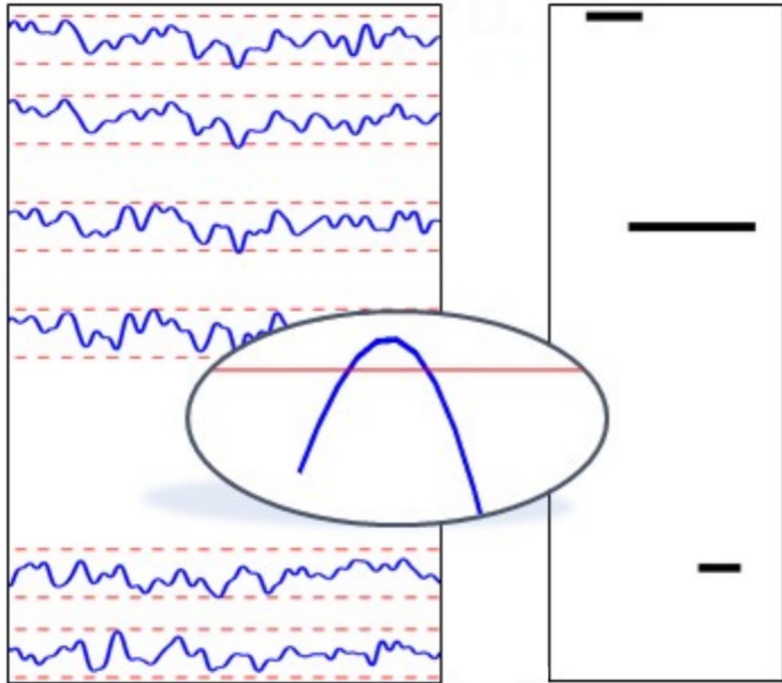
Tracking the dynamical features related to motor imagery as compared to rest

Differences in transition probabilities discriminate mental states

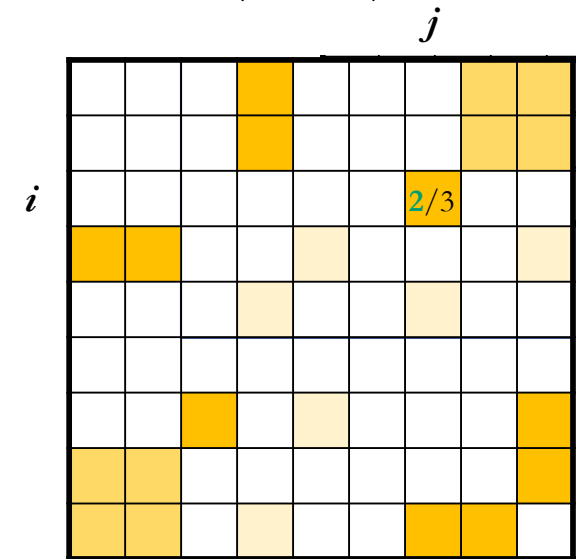


Adapted from [Sorrentino et al, eLife, 2021]





Avalanche Transition Matrix (ATM)

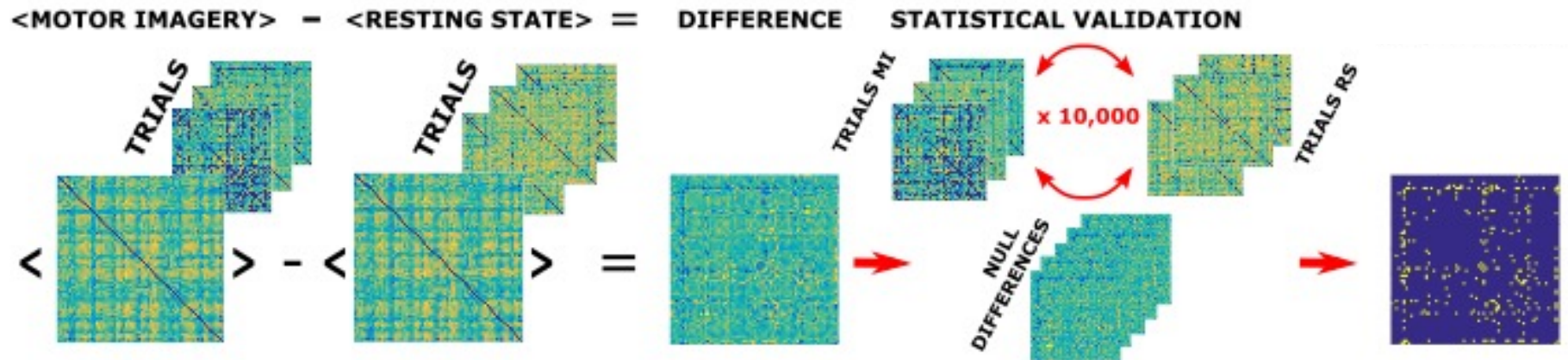


Adapted from [Sorrentino et al, eLife, 2021]

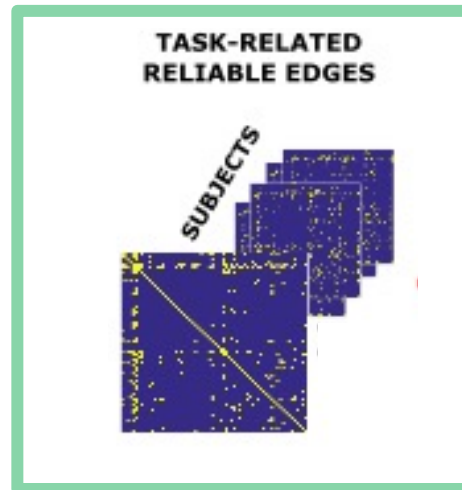


Differences in transition probabilities discriminate mental states

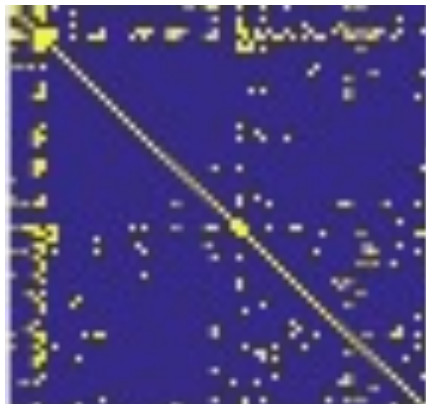
Subject-level



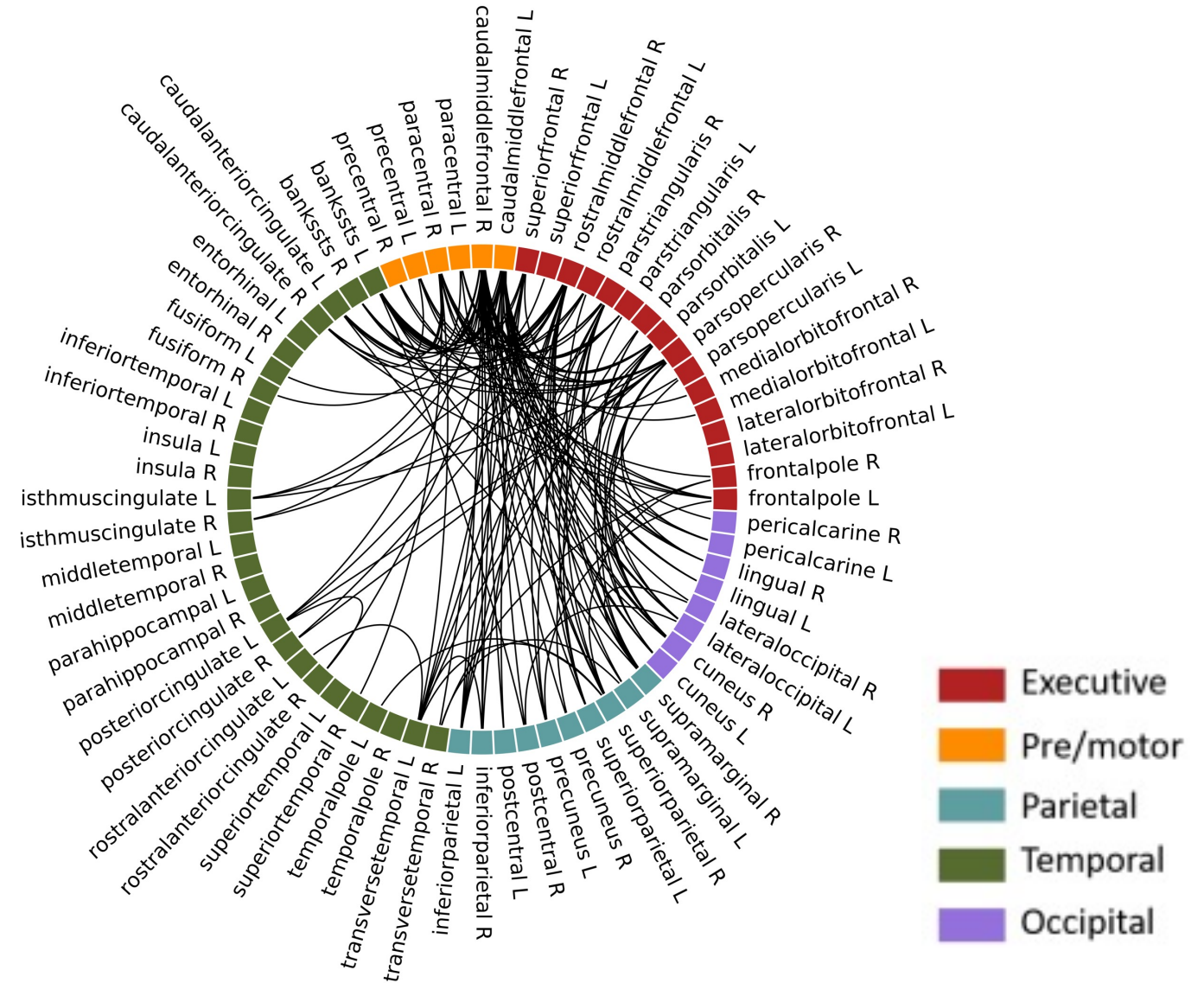
Group-level



Differences in transition probabilities discriminate mental states



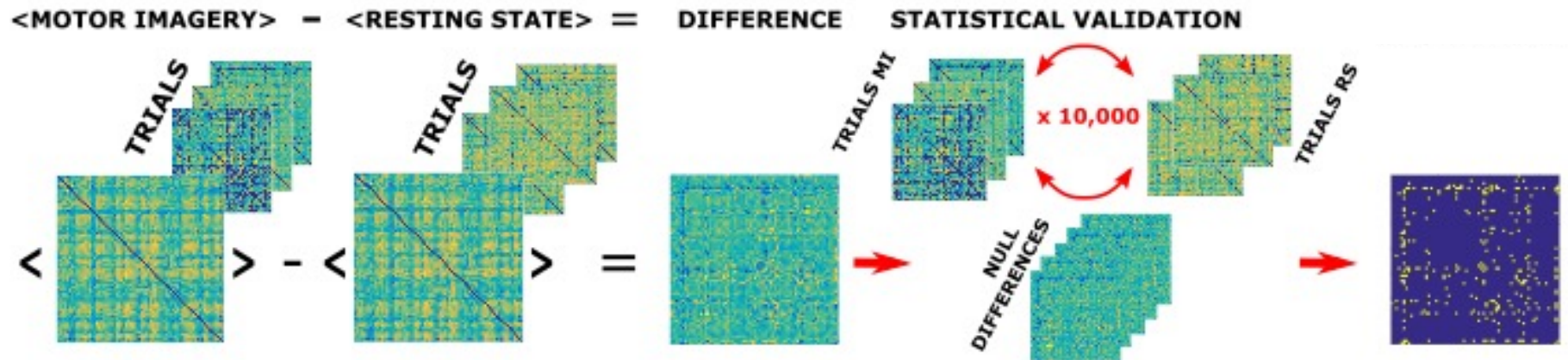
||



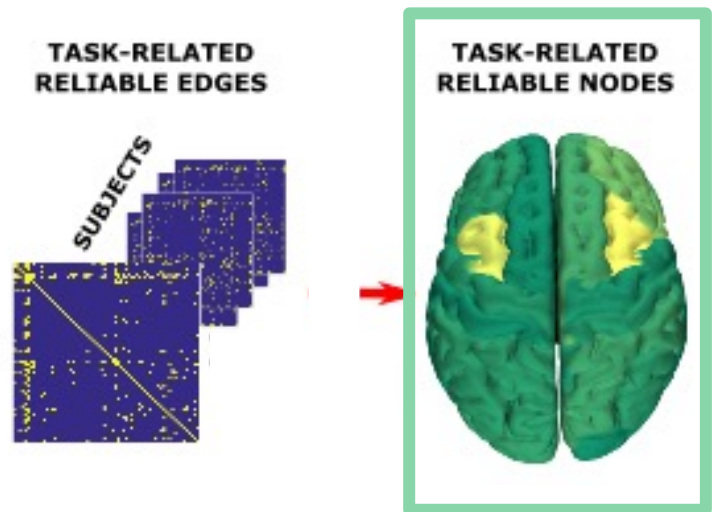
Task-related differences are in edges hinging on pre/motor areas (in most subjects)

Differences in transition probabilities discriminate mental states

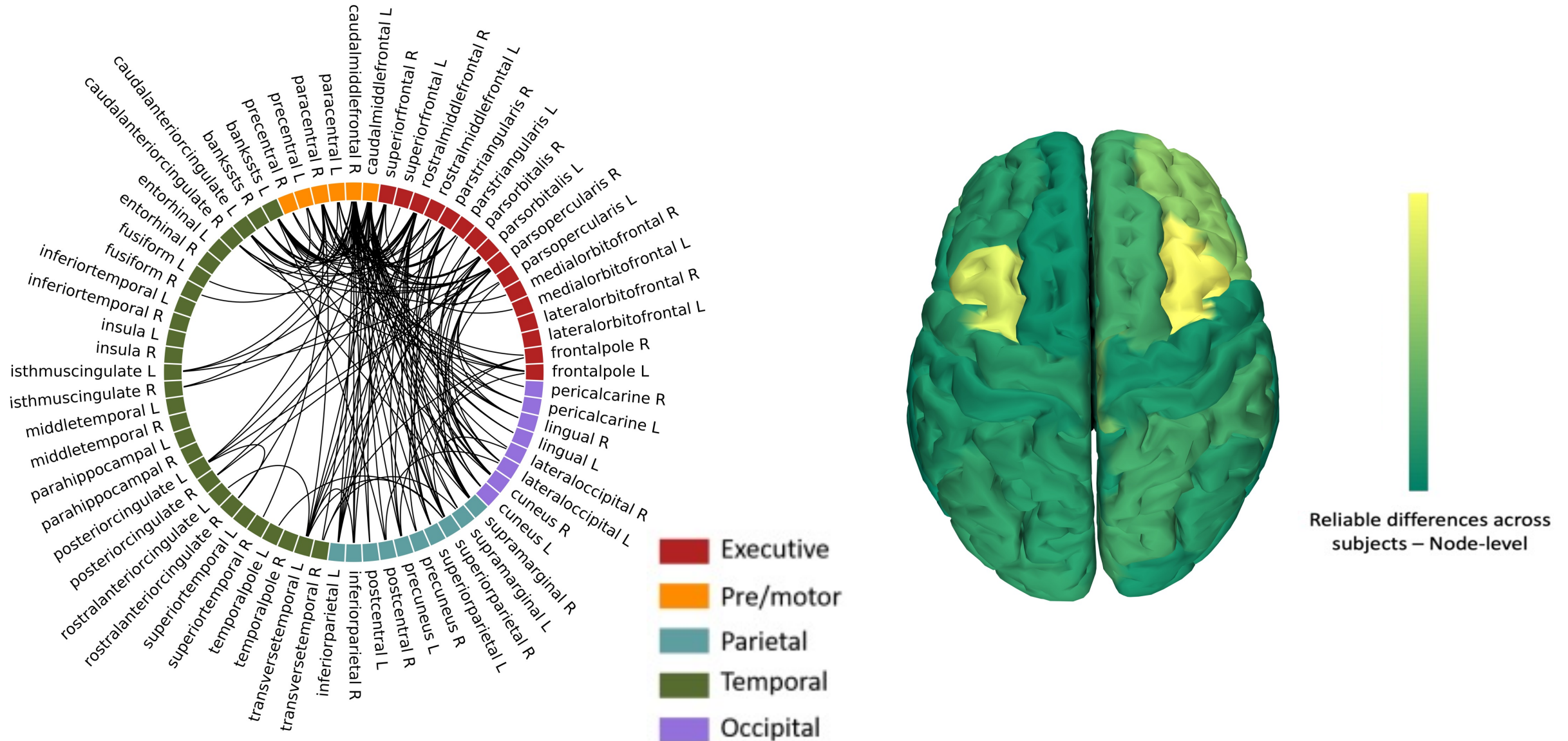
Subject-level



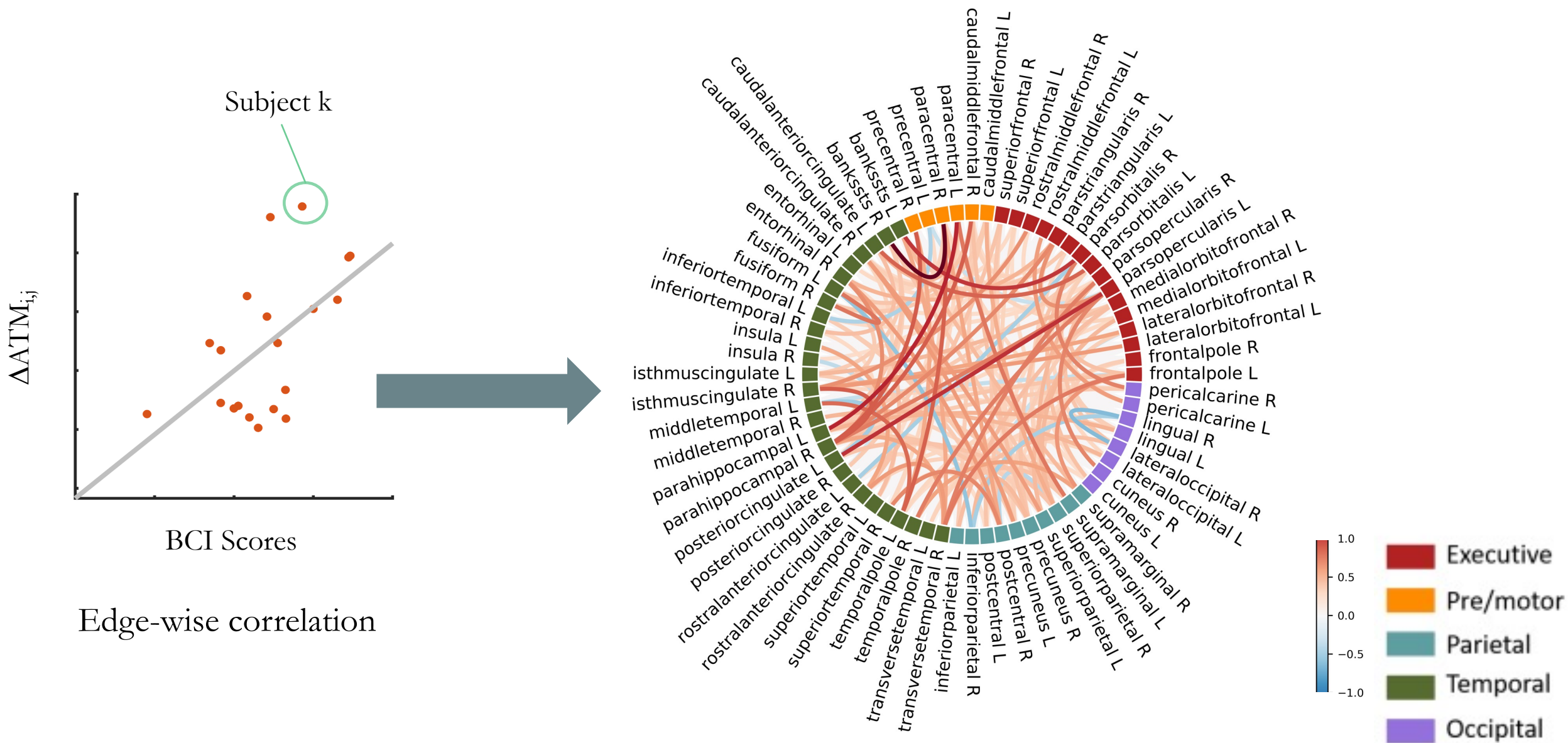
Group-level

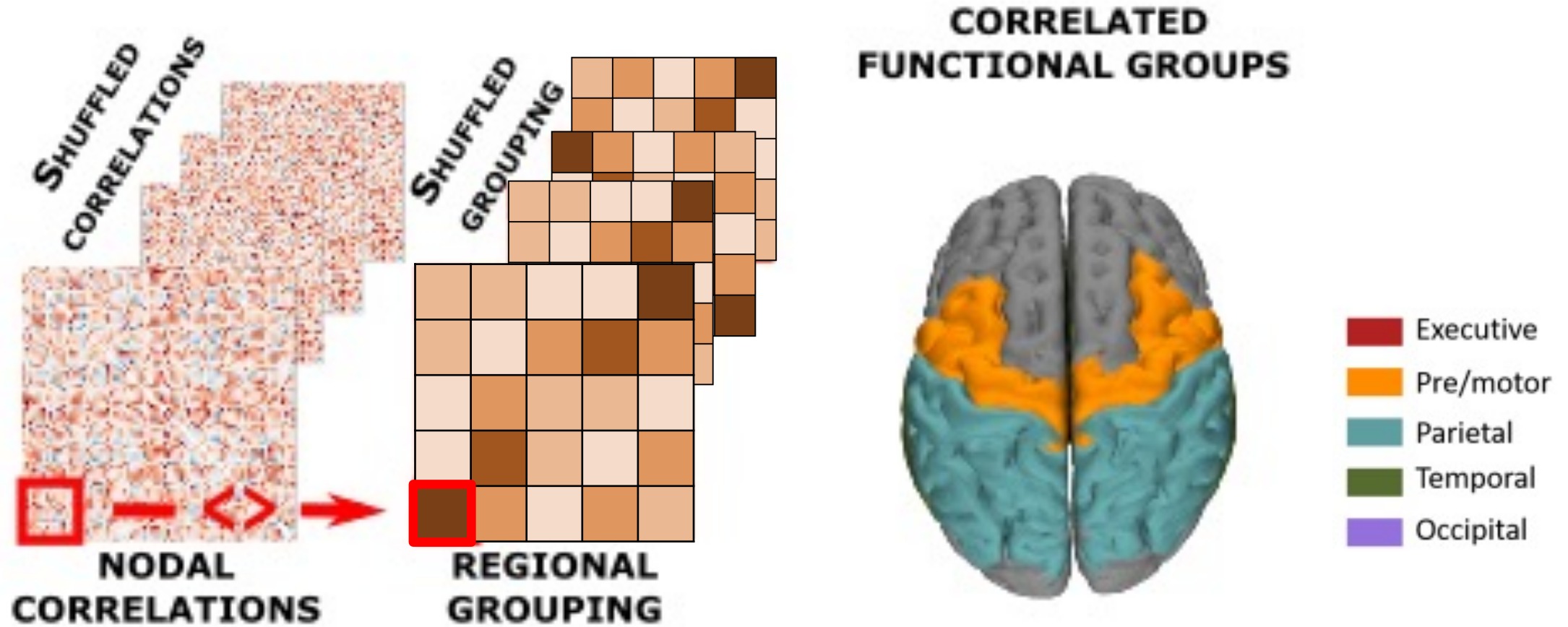


Differences in transition probabilities discriminate mental states

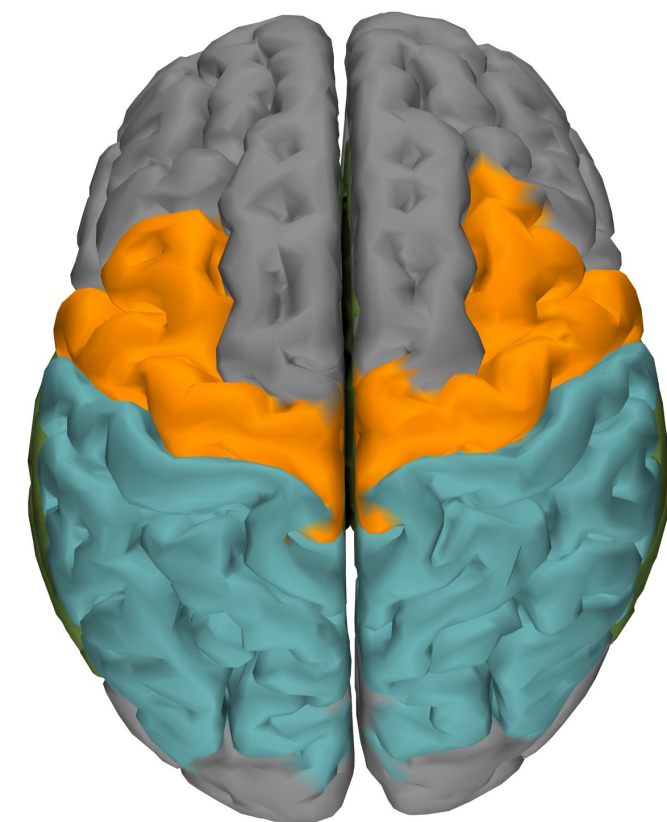
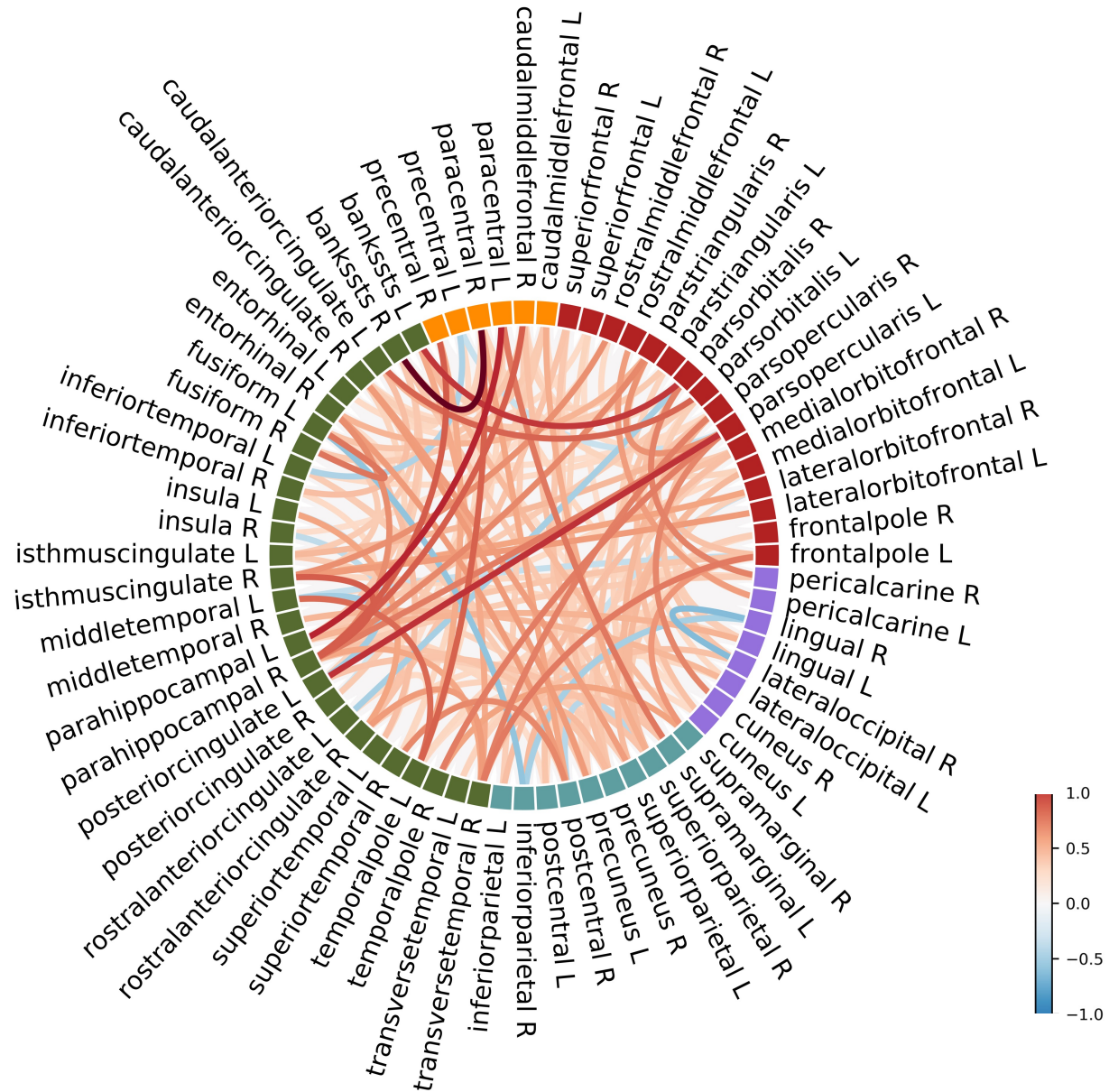


Differences in transition probabilities relate to BCI scores



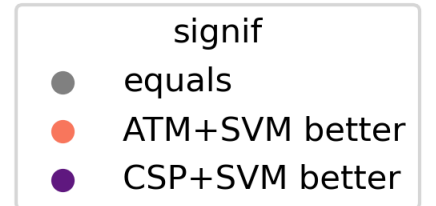
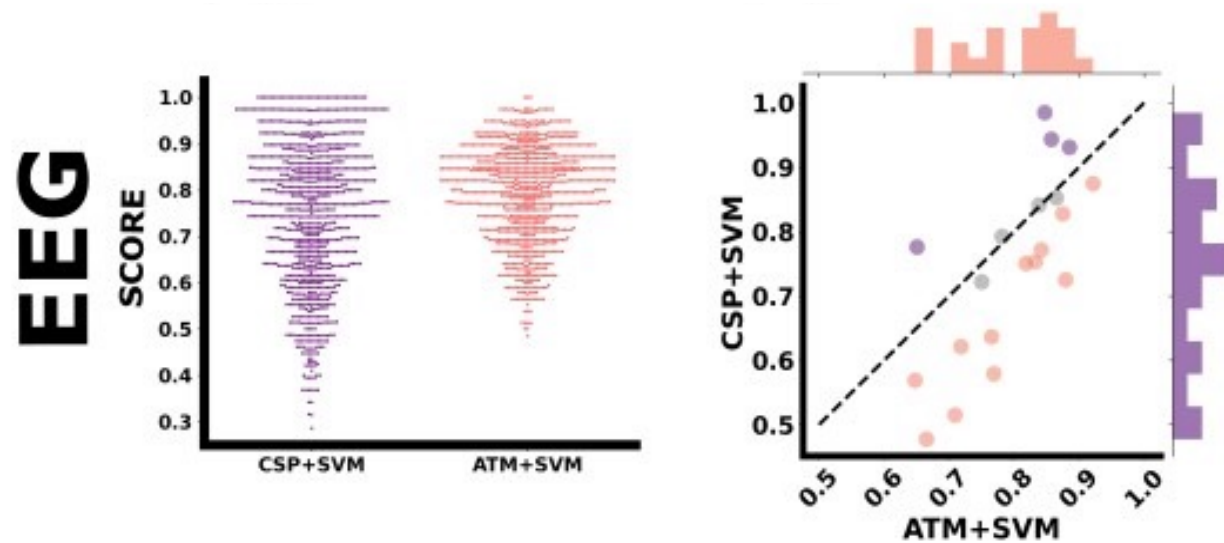
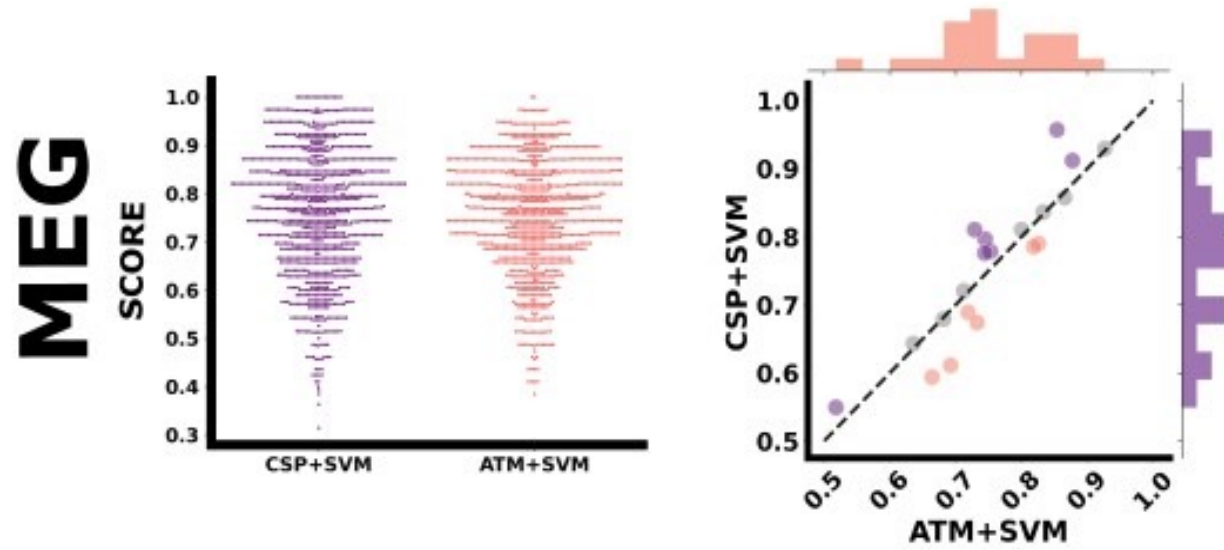


Differences in transition probabilities relate to BCI scores



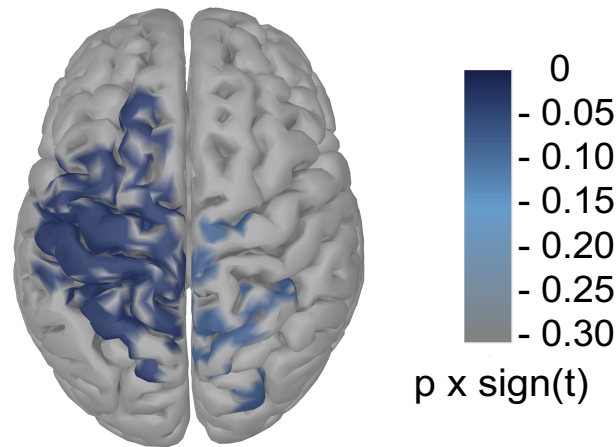
- Executive
- Pre/motor
- Parietal
- Temporal
- Occipital

Transition probabilities as alternative features for BCI

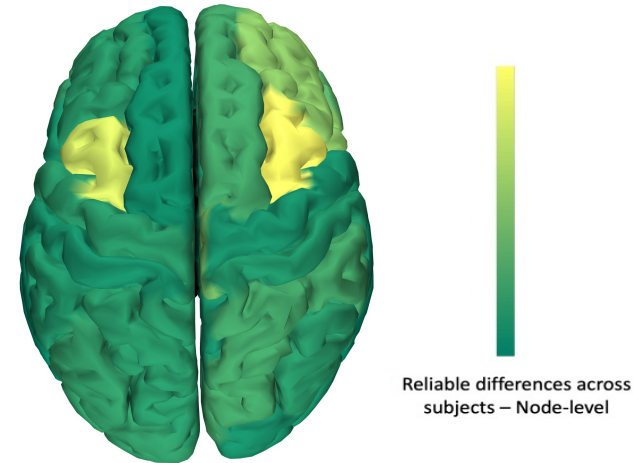


Reliable functional information of task performance retrieval

- Meaningful information communication among regions on the large-scale & aperiodic and scale-free perturbation



Power spectra
significant at **group** level

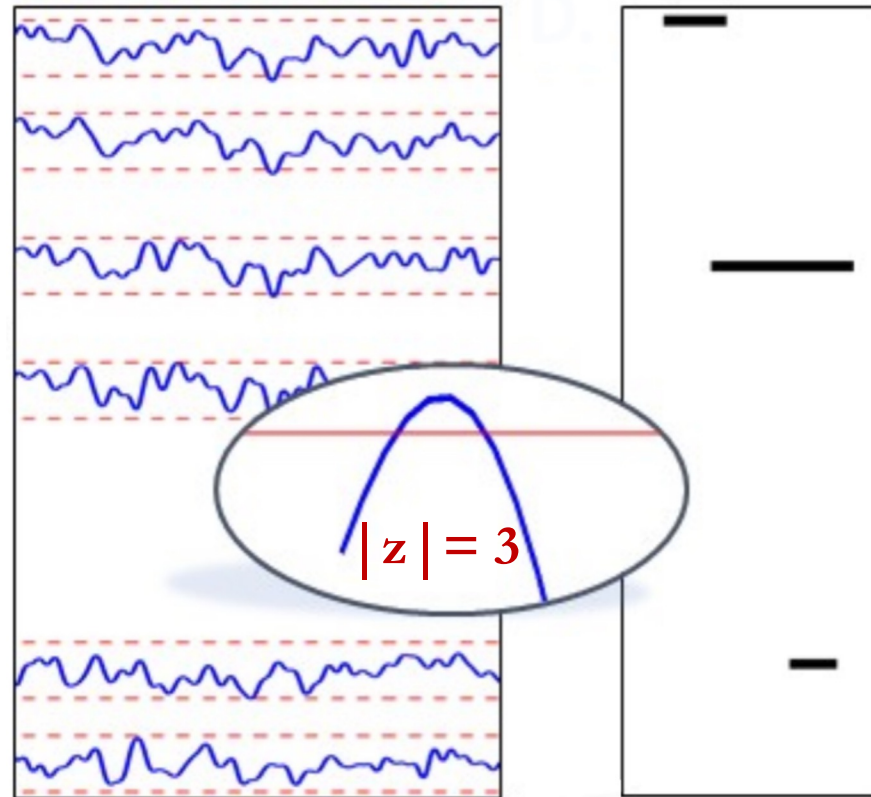


Neuronal avalanches
significant at **individual** level

⇒ Tracking changes in perturbation spreading while performing different tasks via the avalanches transition matrices

Reliable functional information of task performance retrieval

- Meaningful information communication among regions on the large-scale & aperiodic and scale-free perturbation

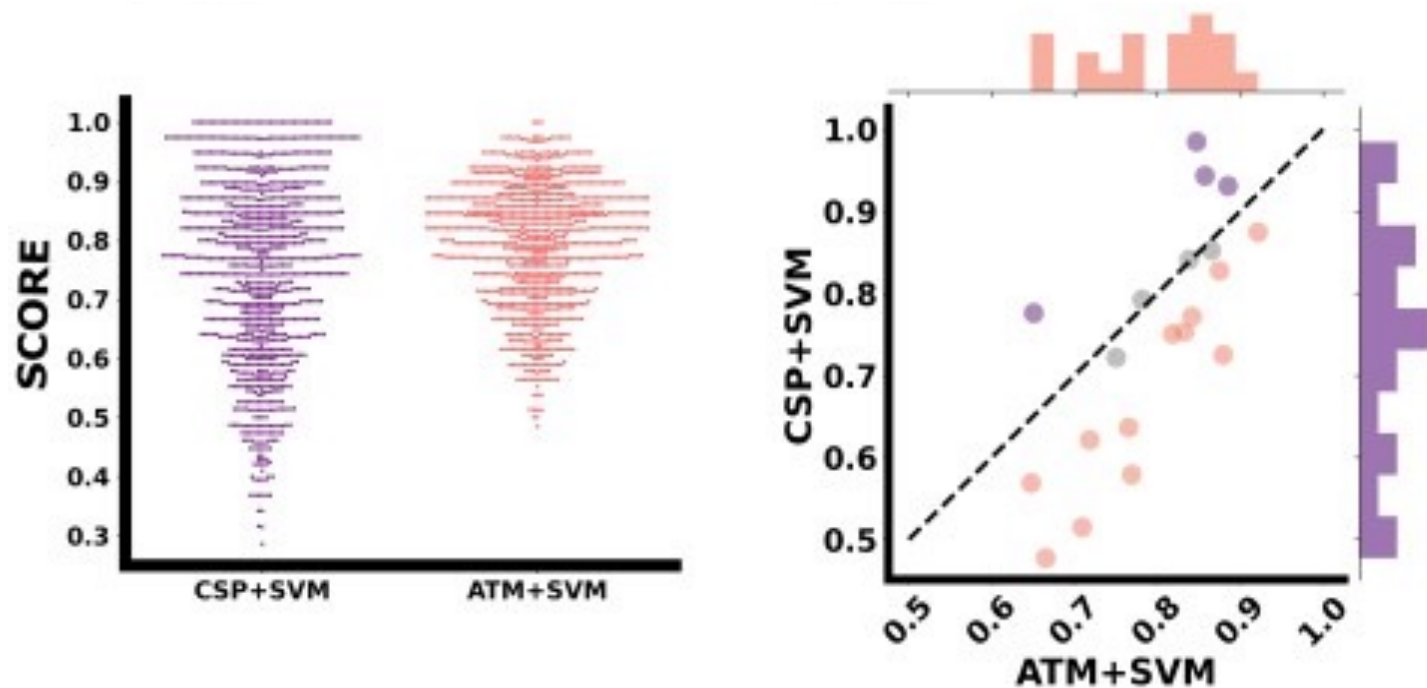


⇒ Focusing on higher-order perturbations to capture functionally-relevant processes & reliable information

Reliable functional information of task performance retrieval

Building innovative BCI protocols based on ATMs

- Outperforms the benchmark in EEG – gold standard in BCI → one step closer to the implementation
- Need to further investigate more suited classification methods



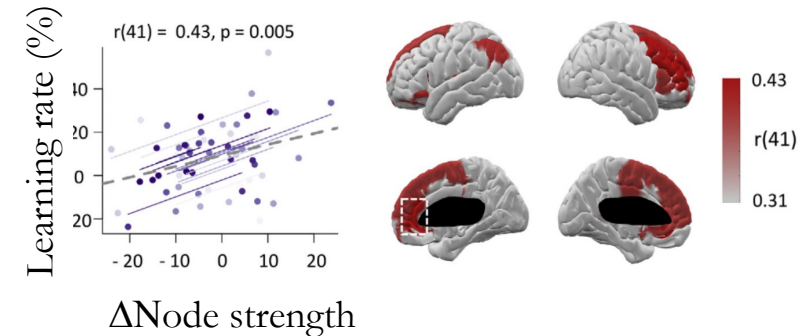
Reliable functional information of task performance retrieval

Building innovative BCI protocols based on ATMs

Markers of BCI performance

- Current predictors of BCI
 - Local measurements – power spectra (Ahn et al, 2015) → replicability issues
 - Time-averaged brain interactions (Sugata et al, 2014) & Brain networks metrics [Gonzalez-Astudillo et al, JNE, 2020]

- Spreading of neuronal avalanches
 - Patterns behaviorally meaningful (Chialvo et al, 2010)
 - Computational fast marker



Node strength [Corsi et al, NeuroImage 2020]]
Multimodal core-periphery properties [Corsi et al, JNE 2021]

Paris Brain Institute

Mario Chavez,
Denis Schwartz,
Nathalie George,
Laurent Hugueville,
Christophe Gitton
Sophie Dupont,
Juliana Gonzalez-Astudillo,
Fabrizio De Vico Fallani (PI)



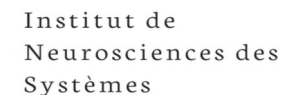
Penn University

Ari E. Kahn,
Ankit Khambhati,
Jennifer Stiso,
Arnold Campbell,
Danielle S. Bassett (PI)



Institut de Neurosciences des Systèmes

Pierpaolo Sorrentino,
Viktor Jirsa (PI)



Interested in this study?

Scan the QR code to get access to the associated preprint!



[mccorsi/NeuronalAvalanches4BCI](https://github.com/mccorsi/NeuronalAvalanches4BCI)

Thank you for your attention!



marie-constance.corsi@inria.fr

pierpaolo.sorrentino@univ-amu.fr



MConstanceCorsi
PierpaSorre