



HAL
open science

Dimensionality Reduction and Frequency Bin Optimization To Improve a Riemannian-based Classification Pipeline

Rune Frateur, Sylvain Chevallier, Florian Yger, Marie-Constance Corsi

► **To cite this version:**

Rune Frateur, Sylvain Chevallier, Florian Yger, Marie-Constance Corsi. Dimensionality Reduction and Frequency Bin Optimization To Improve a Riemannian-based Classification Pipeline. CORTICO 2023 - Journées Collectif pour la Recherche Transdisciplinaire sur les Interfaces Cerveau-Ordinateur, May 2023, Paris, France. . hal-04140107

HAL Id: hal-04140107

<https://inria.hal.science/hal-04140107v1>

Submitted on 24 Jun 2023

HAL is a multi-disciplinary open access archive for the deposit and dissemination of scientific research documents, whether they are published or not. The documents may come from teaching and research institutions in France or abroad, or from public or private research centers.

L'archive ouverte pluridisciplinaire **HAL**, est destinée au dépôt et à la diffusion de documents scientifiques de niveau recherche, publiés ou non, émanant des établissements d'enseignement et de recherche français ou étrangers, des laboratoires publics ou privés.



Distributed under a Creative Commons Attribution 4.0 International License

DIMENSIONALITY REDUCTION & FREQUENCY BIN OPTIMIZATION TO IMPROVE A RIEMANNIAN-BASED CLASSIFICATION PIPELINE

Rune Frateur¹, Sylvain Chevallier², Florian Yger³, and Marie-Constance Corsi¹

1. Aramis project-team, Paris Brain Institute, France 3. LAMSADE, Univ Paris Dauphine PSL, France
2. TAU, LISN, Univ. Paris Saclay, France

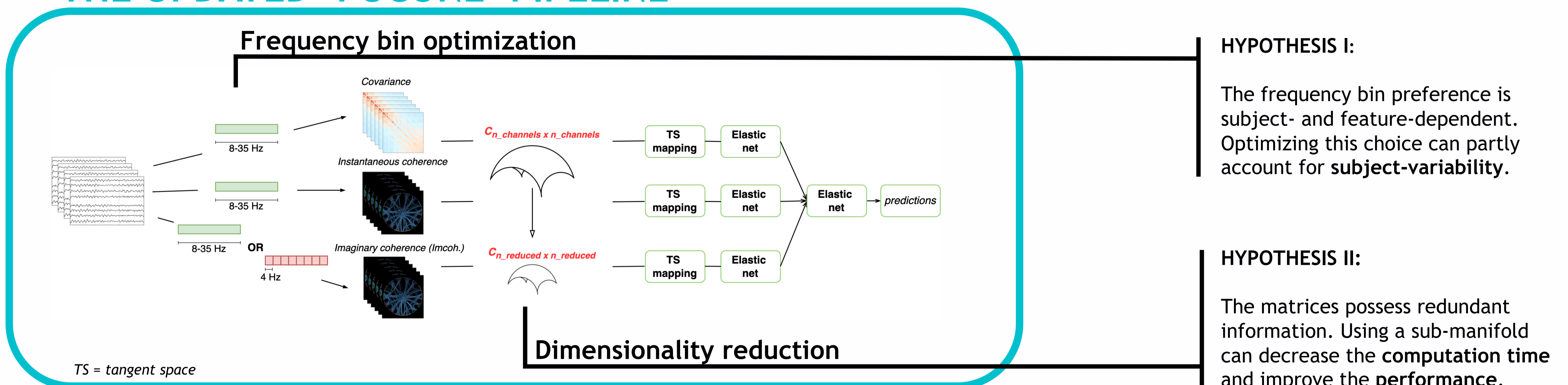
rune.frateur@student-cs.fr

Subject variability and **BCI illiteracy** pose a challenge to the BCI domain. To tackle this, the field has taken a turn towards **Riemannian geometry**, which has been shown to reach state-of-the-art performance. This promising mathematical concept is applicable in this field as the **covariance matrices** lay on a Riemannian manifold. This idea is exploited by combining Riemannian geometry with **functional connectivity** in a 'Functional Connectivity Ensemble' (FUCONE) in [1] with the aim to improve the performance of motor imagery (MI) BCI. FUCONE showed promising results, but this multi-step classification process also holds room for improvement. In this work, we focus on two aspects of the pipeline: **the choice of frequency band** and **dimensionality reduction** of the feature space.

RIEMANNIAN GEOMETRY

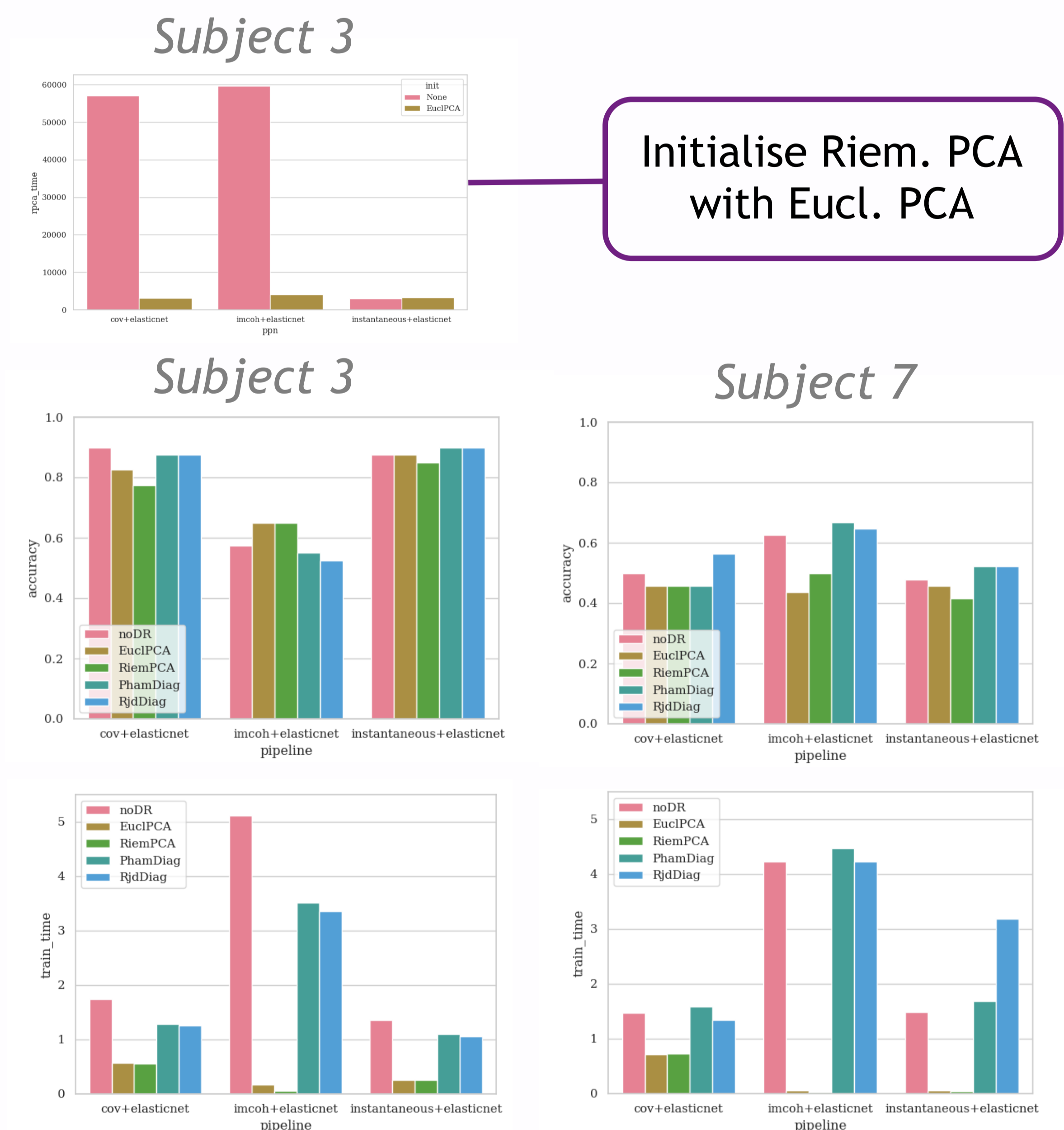
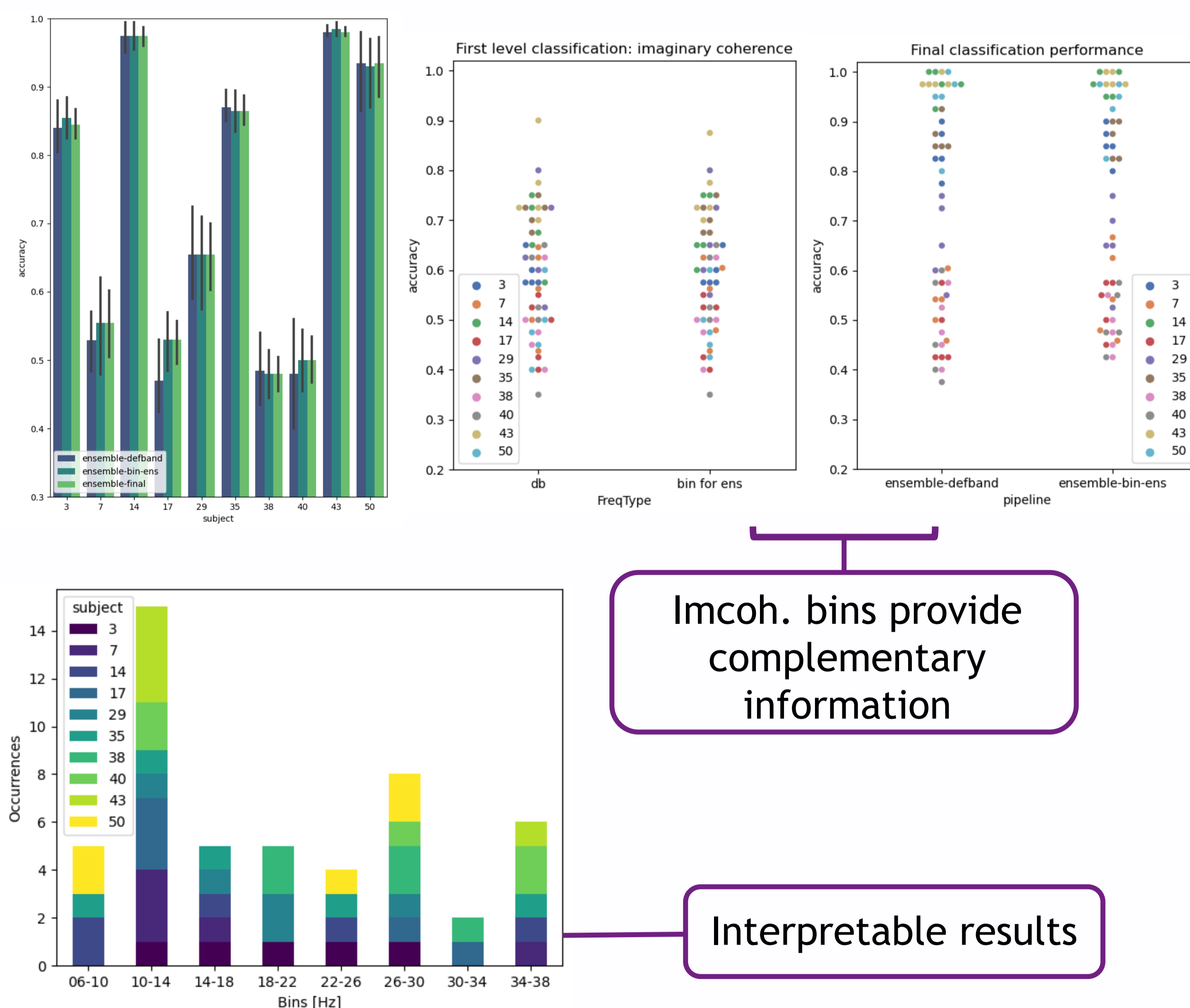
This promising mathematical concept is applicable in the field of BCI as the **covariance matrices** lay on a Riemannian manifold, a curved space. This manifold enables to extract **structural information** that is embedded in the matrices. By mapping the matrices onto the **tangent space** (an Euclidean space), traditional classification methods can be applied, such as LDA and SVM.

THE UPDATED 'FUCONE' PIPELINE



I - Frequency bin optimization

II - Dimensionality reduction



NEXT STEPS

- Introduce **multi-modal data**
- Take **feature/subject bin-preferences** into account
- More extensive bin/metric combinations

- Further **hyperparameter tuning** (focus on Riemannian PCA)
- Improve **interpretability** by analyzing the projection matrix

REFERENCES

[1] M.-C. Corsi et al. "Functional Connectivity Ensemble Method to Enhance BCI Performance (FUCONE)". In: IEEE Trans. Biomed. Eng. 69.9 (2022), pp. 2826-2838. doi: 10.1109/TBME.2022.3154885.