



**HAL**  
open science

## AdaStop: adaptive statistical testing for sound comparisons of Deep RL agents

Timothée Mathieu, Riccardo Della Vecchia, Alena Shilova, Matheus Medeiros Centa, Hector Kohler, Odalric-Ambrym Maillard, Philippe Preux

► **To cite this version:**

Timothée Mathieu, Riccardo Della Vecchia, Alena Shilova, Matheus Medeiros Centa, Hector Kohler, et al.. AdaStop: adaptive statistical testing for sound comparisons of Deep RL agents. Inria. 2024. hal-04132861v1

**HAL Id: hal-04132861**

**<https://inria.hal.science/hal-04132861v1>**

Submitted on 20 Jun 2023 (v1), last revised 13 Nov 2024 (v2)

**HAL** is a multi-disciplinary open access archive for the deposit and dissemination of scientific research documents, whether they are published or not. The documents may come from teaching and research institutions in France or abroad, or from public or private research centers.

L'archive ouverte pluridisciplinaire **HAL**, est destinée au dépôt et à la diffusion de documents scientifiques de niveau recherche, publiés ou non, émanant des établissements d'enseignement et de recherche français ou étrangers, des laboratoires publics ou privés.



Distributed under a Creative Commons Attribution 4.0 International License

*Inria*

# AdaStop: sequential testing for efficient and reliable comparisons of Deep RL Agents

Timothée Mathieu, Riccardo Della Vecchia, Alena Shilova, Matheus Centa de Medeiros, Hector Kohler, Odalric-Ambrym Maillard, Philippe Preux

**RESEARCH  
REPORT**

**N° 9513**

June 2023

Project-Team Scool

ISRN INRIA/RR--9513--FR+ENG

ISSN 0249-6399





## AdaStop: sequential testing for efficient and reliable comparisons of Deep RL Agents

Timothée Mathieu<sup>\*</sup>, Riccardo Della Vecchia<sup>\*</sup>, Alena Shilova<sup>\*</sup>,  
Matheus Centa de Medeiros<sup>†</sup>, Hector Kohler<sup>†</sup>, Odalric-Ambrym  
Maillard<sup>\*</sup>, Philippe Preux<sup>†</sup>

Project-Team Scool

Research Report n° 9513 — June 2023 — 38 pages

**Abstract:** The reproducibility of many experimental results in Deep Reinforcement Learning (RL) is under question. To solve this reproducibility crisis, we propose a theoretically sound methodology to compare multiple Deep RL algorithms. The performance of one execution of a Deep RL algorithm is random so that independent executions are needed to assess it precisely. When comparing several RL algorithms, a major question is how many executions must be made and how can we assure that the results of such a comparison are theoretically sound. Researchers in Deep RL often use less than 5 independent executions to compare algorithms: we claim that this is not enough in general. Moreover, when comparing several algorithms at once, the error of each comparison accumulates and must be taken into account with a multiple tests procedure to preserve low error guarantees. To address this problem in a statistically sound way, we introduce AdaStop, a new statistical test based on multiple group sequential tests. When comparing algorithms, AdaStop adapts the number of executions to stop as early as possible while ensuring that we have enough information to distinguish algorithms that perform better than the others in a statistical significant way. We prove both theoretically and empirically that AdaStop has a low probability of making an error (Family-Wise Error). Finally, we illustrate the effectiveness of AdaStop in multiple use-cases, including toy examples and difficult cases such as Mujoco environments.

**Key-words:** Reproducibility, Reinforcement Learning, Sequential Tests.

---

<sup>\*</sup> Univ. Lille, Inria, CNRS, Centrale Lille, UMR 9189 – CRISTAL, Lille, France

<sup>†</sup> Univ. Lille, CNRS, Inria, Centrale Lille, UMR 9189 – CRISTAL, Lille, France

**RESEARCH CENTRE  
LILLE – NORD EUROPE**

Parc scientifique de la Haute-Borne  
40 avenue Halley - Bât A - Park Plaza  
59650 Villeneuve d'Ascq

## AdaStop: test séquentiel pour les comparaisons efficaces et fiables d'Agents Profonds APR

**Résumé :** La reproductibilité de nombreux résultats expérimentaux dans le domaine de l'apprentissage par renforcement profond (APR) est remise en question. Pour résoudre cette crise de reproductibilité, nous proposons une méthodologie théoriquement solide pour comparer plusieurs algorithmes d'apprentissage par renforcement profond. La performance d'une exécution d'un algorithme de APR Profond est aléatoire, de sorte que des exécutions indépendantes sont nécessaires pour l'évaluer avec précision. Lors de la comparaison de plusieurs algorithmes APR, une question majeure est de savoir combien d'exécutions doivent être effectuées et comment garantir que les résultats d'une telle comparaison sont théoriquement valides. Les chercheurs en APR profond utilisent souvent moins de 5 exécutions indépendantes pour comparer les algorithmes : nous affirmons que cela n'est pas suffisant en général. De plus, lorsque l'on compare plusieurs algorithmes à la fois, l'erreur de chaque comparaison s'accumule et doit être prise en compte par une procédure de tests multiples afin de préserver des garanties d'erreur faibles. Pour résoudre ce problème d'une manière statistiquement fiable, nous présentons AdaStop, un nouveau test statistique basé sur des tests séquentiels à groupes multiples. Lors de la comparaison d'algorithmes, AdaStop adapte le nombre d'exécutions pour s'arrêter le plus tôt possible tout en garantissant que nous disposons de suffisamment d'informations pour distinguer les algorithmes plus performants que les autres de manière statistiquement significative. Nous prouvons à la fois théoriquement et empiriquement qu'AdaStop a une faible probabilité de commettre une erreur. Enfin, nous illustrons l'efficacité d'AdaStop dans de multiples cas d'utilisation, y compris des exemples de jouets et des cas difficiles tels que les environnements Mujoco.

**Mots-clés :** Reproductibilité, Apprentissage par Renforcement, Tests Séquentiels.

# 1 Introduction

We consider the problem of comparing a set of Reinforcement Learning (RL) agents, based on experimental runs only, in a theoretically sound way while using as few runs as possible.

*A methodology crisis.* In this paper, the end-goal is *result reproducibility* which consists in being able to get the “same” result when re-running an experiment even if the seed of randomness changes [1, 7, 13]. In RL, in particular, papers that contain an experimental study usually compare the performance of 2 or more agents facing a certain task. The common practice is to run each agent  $N$  times, typically using different pseudo-random number seeds. From these runs, the performance of the agent is measured (e.g. using an estimate of the value of the agent policy). This  $N$  is usually set *a priori*, hoping that it is enough to decide how agents rank, or at least the best one. When the training does not take too long, it is possible to take  $N$  large and be confident about the conclusion. As it is customary today, one may also test the agents on computationally heavy tasks, where an experimental run of one agent may take several days to complete. In such cases, practitioners may execute only  $N = 3$  runs, and still proceed with conclusions. We scanned all RL papers published in the proceedings of ICML 2022: there are 82 and only one paper uses a statistical test to compare agents [19]. Most papers use less than  $N = 5$  runs (see Appendix H.1). For a statistician, it is clear that the  $N$  being used is unlikely to be enough, except maybe the paper using  $N = 80$ . In any case, for all these 82 papers, we simply do not know if the conclusion is statistically significant. Indeed, from a probabilistic point of view, the performance of an agent is a random variable, and one run generates one sample from this random variable. The randomness may come from the agent itself (e.g. random initialization of some variables, or random decisions), from stochastic transitions or rewards of the environment, or both. For these reasons, comparing the performance of two agents in a reliable way usually requires more than a single run of each agent, to account for the statistical variability of the random variables and hence draw the correct conclusion. This creates a tension between collecting enough runs to ensure the correct conclusion and keeping the running time (also computational power, energy consumption) required by all experimental runs as low as possible. Moreover, the distribution of the performance of an agent rarely belongs to a classical parametric family and should rather be thought of as being non-parametric (see Appendix H.2), which creates an additional difficulty.

*Motivation.* Motivated by these critical methodological issues, we want to introduce a sound statistical test as a tool for practitioners to assess whether agent  $A_1$  is statistically better than learning agents  $A_2, \dots, A_L$ . Furthermore, due to the stringent cost of performing one run of an agent, we want to achieve a statistically significant conclusion with as few runs as possible to rank the agents. In short, we want a sequential non-parametric multiple-hypothesis test with sound guarantees (for drawing the right conclusion), able to stop experiments as soon as enough evidence is acquired to rule out the wrong hypotheses. While designing such a test may be beneficial far beyond the field of reinforcement learning (e.g. computational optimization), in this paper we focus on RL due to its identified methodology issues and easily available benchmarks.

*Literature overview of evaluation methods.* The literature relevant to solving the evaluation methodology challenge is three-fold:

**Non-adaptive approaches.** In the literature, two approaches for RL agent comparison have been studied. In [6, 7], the authors show how to use hypothesis testing to test the equality between agents. Compared to our work, their approach is non-adaptive and only compares two agents. Another line of works can be found in [1] in which the authors compare many agents using confidence intervals. Their approach is non-adaptive and lacks theoretical guarantees, as they do not use multiple tests.

**Sequential tests.** A closely related method for adaptive hypothesis testing are sequential

tests. Two particular classes of sequential tests that are commonly used are the Sequential Probability Ratio test [30] and the Generalized Likelihood Ratio test [18]. In the sequential testing, one deals with the performance of each single run, one after the other. This is not adapted to our situation because in RL practice, one often trains several agents in parallel, hence obtaining a batch of performances simultaneously. This motivates the use of group sequential tests [17]. In particular, the test we use is close to the one presented in [22] in which they use rank test with group-sequential testing. Contrary to our work, [22] do not provide theoretical guarantees.

**Bandits (Best arm identification or ranking).** Our objective is close to the one of bandit algorithms [20]. Similar to bandits, we *minimize the stopping time* (as in fixed-confidence setting) of the test and have a *fixed maximum budget* (as in fixed-budget setting). In our test, we allow a type I error with probability  $\alpha \in (0, 1)$ , which is similar to the fixed confidence setting while still having a fixed budget. Compared to the fixed budget setting, we allow a larger error rate, which results in a test that is more sample efficient than bandit algorithms.

*Contribution.* The main contribution of this paper is to define AdaStop, a statistical test able to decide whether the number of runs already made is enough to rank a set of agents with some confidence level  $\alpha$ . Moreover, AdaStop enables us to generate the number of runs adaptively until it can tell how the agents are ranked. AdaStop is a new sequential test; we provide the theoretical analysis that proves that AdaStop is actually performing this test. Aside from the theoretical contribution, we report on an experimental study that demonstrates its use. AdaStop also comes as an off-the-shelf open source program that is easy to use.

By providing a statistical test to compare the performance of different agents, AdaStop improves on experimental reproducibility (we define this term below) by making researchers run their experiments just enough times, but not more. In this regard, AdaStop may also help to optimize the energy consumption by avoiding unnecessary runs, while ensuring statistically valid conclusions.

**Overview of the paper:** In Section 2, we state the problem and make a survey of existing evaluation workflows in RL. In Section 3, we provide a background on the statistical tools used to design AdaStop, especially group-sequential, permutation and multiple hypotheses tests. Our main algorithm, AdaStop, is introduced in Section 4, Algorithm 1, and its theoretical guarantees are stated in Theorem 1. Finally, in Section 6, we give a detailed experimental study of potential benefits of AdaStop to draw statistically significant comparisons of agents.

The code (in python) to reproduce the article is on github, and, in addition, we provide a library and command-line tool that can be used independently<sup>1</sup>.

## 2 Problem setting

First, we fix some vocabulary that we will use throughout the article.

- Vocabulary in RL

**Agent:** a program implementing an RL algorithm with its set of parameters and hyper-parameters values, except the seed of the pseudo-random number generator.

<sup>1</sup>Anonymous repository can be found here: AdaStop Library repo <https://anonymous.4open.science/r/adastop-1CF3>, paper reproducibility repo [https://anonymous.4open.science/r/Adaptive\\_stopping\\_MC\\_RL-5450/](https://anonymous.4open.science/r/Adaptive_stopping_MC_RL-5450/).

**Seed & run:** a run is one training of an agent and the subsequent evaluations of this trained agent. Because one run is initialized with a seed of the random number generator, it is common to refer to the number of runs as the number of seeds.

**Evaluation:** cumulative reward obtained after running the policy of a trained agent for one episode.

**Performance:** denoted  $e_N(j)$  or  $e_{N,k}(j)$ : quantification of the performance of a trained agent on one run. Typically, we run the agent’s policy on the environment for 100 epochs and recover the evaluation of each epoch. The performance returned is usually the mean of these 100 evaluations.

- Vocabulary on tests

**Interim:** interim  $k$  is the  $k^{th}$  iteration in a group sequential testing, when we take a decision whether to reject the hypotheses and stop early or continue with the group sequential test.

**Boundary:** denoted  $B_N^{(j)}$  or  $B_{N,k}^{(j)}$ , the boundary is the set of all the thresholds used in the group sequential test.

## 2.1 Goal and requirements for AdaStop

Given two agents  $A_1$  and  $A_2$ , the goal of this article is to propose a sound way to evaluate how large  $N$  must be to be confident that either  $\mathbb{E}[e_1(A_1)] = \mathbb{E}[e_2(A_2)]$  or  $\mathbb{E}[e_1(A_1)] \neq \mathbb{E}[e_2(A_2)]$ , i.e. if two agents perform similarly or if one is better than the other. This leads to manage a trade-off between the computational time and the correct assessment of the performances of  $A_1$  and  $A_2$ . The main properties of AdaStop are as follows:

**Non-Parametric** The distribution of agents’ performances is typically non-Gaussian, usually multi-modal, skewed, etc.

**Fixed Budget** AdaStop should use a fixed maximum number of runs so that the computational time stays reasonable.

**Sample efficient** AdaStop should stop as soon as possible in practice, that is, as soon as a statistically significant conclusion can be drawn.

**Handling batches of data** AdaStop should be able to manage batches of data to be run in parallel. Training one instance of an agent may take a long time, but training multiple instances of an agent is easy to parallelize, and thus should be done to speed-up computations.

Hence, AdaStop should be a distribution-free test.

A candidate statistical test that may verify all these properties can be found in group sequential permutation test (see the textbook [17] on the subject).

## 2.2 Survey of current evaluation workflows in RL

In the RL community, different approaches currently exist to compare agents and most of them are not based on any theoretically sound workflow. In what follows, we summarize some of the problems we see with the current approaches used to compare two or more RL agents in research articles.



### Theoretically sound study of Atari environments?

Atari environments are famous benchmarks in Deep RL [2]. Due to time constraints, when using these environments, it is customary to use very few seeds for one given game (typically 3 seeds) and compare the agents on many different games. The comparisons are then aggregated in: agent  $A_1$  is better than agent  $A_2$  on more than 20 games over the 26 games considered. In terms of rigorous statistics, this kind of aggregation is complicated to analyze properly because the reward distributions are not the same in all games.  $A_2$  may be better than  $A_1$  only on some easy games: does this mean that  $A_1$  is a better than  $A_2$ ? Up to our knowledge, there is not any proper statistical guarantee for this kind of comparison. Aggregating the comparisons on several games in Atari is still an *open problem*, and it is *beyond the scope of this article*. In this article, we suppose that we compare the agents only on one given task and leave the comparisons on a set of different tasks for future work.

### Theoretically sound comparison of multiple agents?

Statistical theory tells that to compare more than 2 agents (this is called multiple testing in statistics), we need more samples from each agent than if we compare only two agents. The basic idea is that there are a lot more occasions to make an error than when we compare only two agents, hence we need more data to have a lower probability of error at each comparison. This informal argument is made precise when using multiple testing, but the theory of multiple testing has never been used to compare RL agents. In this paper, we remedy this with AdaStop giving a theoretically sound workflow to compare many RL agents.

### How many random seeds for Mujoco environments?

The number of runs used in practice in RL is quite arbitrary and often quite small (see Appendix H.1). An arbitrary choice of seeds do not allow us to make a statistically significant comparison of the agents.

## 3 Background material on hypothesis testing

In this section we describe the basic building blocks used to construct AdaStop: group sequential testing, permutation tests, and step-down method for multiple tests. We explain these items separately, and then we combine them to create AdaStop in Section 4. We also provide a small recap on hypotheses testing in the Appendix (Section B) for readers that are not used to hypothesis testing and we provide an index of notations (Section A) defining the notations used in this article.

### 3.1 Group sequential testing

To choose the number of runs  $N$  adaptively, we propose to use group sequential testing (GST, see [17, 14, 25, 23]). GST often makes strong assumptions on the data, in particular it is often assumed that the data is i.i.d. and drawn from a Gaussian distribution (see [17]). With AdaStop, we propose a non-parametric approach to GST similar to [22]. In GST, the data are obtained sequentially, but the tests are done only at interim time points, with a new block of  $n$  data being obtained from one monitoring point to the next. At each interim, the boundary deciding which test to reject is derived from the permutation distribution of the statistics observed across all previously obtained data.

### 3.2 Permutation tests

Permutation tests (originally from [24, 11] and more recently [5, 27, 21]) are non-parametric tests that are exact for testing the equality of distributions. This means that the type I error of the

test (e.g. the probability to make a mistake and reject the equality of two agents when their performances are statistically the same) is controlled by the parameter of the test  $\alpha$ .

Let us recall the basic formulation of a two-sample permutation test. Let  $X_1, \dots, X_N$  be i.i.d. sampled from a law  $P$  and  $Y_1, \dots, Y_N$  i.i.d. sampled from a law  $Q$ , we want to test  $P = Q$  against  $P \neq Q$ . Let  $Z_i = X_i$  if  $i \leq N$  and  $Z_i = Y_i$  if  $i > N$ ,  $Z_1, \dots, Z_{2N}$  is the concatenation of  $X_1, \dots, X_N$  and  $Y_1, \dots, Y_N$ . Then, the test proceeds as follows: we reject  $P = Q$  if  $T(\text{id}) = \left| \frac{1}{N} \sum_{i=1}^N (Z_i - Z_{N+i}) \right|$  is larger than a proportion  $(1 - \alpha)$  of the values  $T(\sigma) = \left| \frac{1}{N} \sum_{i=1}^N (Z_{\sigma(i)} - Z_{\sigma(N+i)}) \right|$  where  $\sigma$  enumerates all possible permutations of  $\{1, \dots, N\}$ . The idea is that if  $P \neq Q$ , then  $T(\text{id})$  should be large, and due to compensations, most  $T(\sigma)$  should be smaller than  $T(\text{id})$ . Conversely, if  $P = Q$ , the difference of mean  $T(\sigma)$  will be closer to zero.

### 3.3 Multiple hypothesis testing

Multiple comparisons arise when a statistical analysis involves multiple simultaneous statistical tests [21, Chapter 9]. One possible error measurement in such a test is the family-wise error. The idea is that the confidence level for rejection probability of a true hypothesis (type I error) generally applies only to each test considered individually, but often it is desirable to have a confidence level for the whole family of simultaneous tests. Instead of the type I error considered in two-sample testing, we consider the classical family-wise error rate [29] which is defined as the probability of making at least one type I error.

**definiton 1** (Family-Wise Error [29]). *Given a set of hypothesis  $H_j$  for  $j \in \{1, \dots, J\}$ , its alternative  $H'_j$ , and  $\mathbf{I} \subset \{1, \dots, J\}$  the set of the true hypotheses among them, then<sup>2</sup>*

$$\text{FWE} = \mathbb{P}_{H_j, j \in \mathbf{I}}(\exists j \in \mathbf{I}: \text{reject } H_j).$$

*We say that an algorithm has a weak FWE control at a joint level  $\alpha \in (0, 1)$  if the FWE is smaller than  $\alpha$  when all the hypotheses are true, that is  $\mathbf{I} = \{1, \dots, J\}$  but not necessarily otherwise. We say it has strong FWE control if FWE is smaller than  $\alpha$  for any non-empty set of true hypotheses  $\mathbf{I} \neq \emptyset$  (while  $\mathbf{I}^c$  refer to false hypotheses).*

There are several procedures that can be used to control the FWE. The most famous one is Bonferroni's procedure [4] recalled in the Appendix (Section B). As it can be very conservative in general, we prefer a *step-down* method [27] that performs better in practice because it implicitly estimates the dependence structure of the test statistic. The step-down method that we use is described in details in the case of two agents in the Appendix in Section F.2. The basic idea is to use the quantiles of the permutation law of the maximum over all the comparisons of the test statistics of the tests for two agents. This step corresponds to line 10 to 15 in AdaStop algorithm (Algorithm 1).

## 4 Adaptive stopping for non-parametric group-sequential multiple hypothesis testing

We now go further and propose a new statistical test, AdaStop (see Algorithm 1), to compare the performance of multiple agents in an *adaptive* rather than fixed way. We consider  $L \geq 2$  agents  $A_1, \dots, A_L$ . The  $k^{\text{th}}$  step of the algorithm is called the  $k^{\text{th}}$  *interim*, where  $k \in \{1, \dots, K\}$ .

<sup>2</sup>Regarding the precise meaning of the notation  $\mathbb{P}_{H_j, j \in \mathbf{I}}$ , we refer to Appendix B.

We let  $\mathbf{C}_0 = \{c_1, \dots, c_J\} \subseteq \{1, \dots, L\}^2$  be all the comparisons we want to make between agents. Therefore,  $c_j = (c_{j,1}, c_{j,2}) \in \mathbf{C}_0$  denotes a comparison between a couple of agent's indices  $c_{j,1}, c_{j,2} \in \{1, \dots, L\}$ . To simplify the notation, we indicate a comparison between two agents directly with the index  $j \in \{1, \dots, J\}$  instead of writing  $c_j$ , and we reserve the use of index  $j$  just for this purpose. We adopt the same shorthand notation also to re-define equivalently the set of all comparisons  $\mathbf{C}_0 = \{1, \dots, J\}$  using just the indices of the comparisons.  $\mathbf{I}$  denotes the set of indices of the true hypotheses among  $\{1, \dots, J\}$ .

We denote  $e_{1,i}(j), \dots, e_{2N,i}(j)$  the concatenation at interim  $i$  of the  $2N$  performance evaluations obtained for comparison  $j$  of two agents. We also consider permutations of these evaluations to define our test statistics  $T_{N,k}^{(j)}$  below. Let  $\mathfrak{S}_{2N}$  be the set of all the permutations of  $\{1, \dots, 2N\}$ . For a comparison  $j$ , and a concatenation of the evaluations of the two agents in the comparison, we consider a permutation  $\sigma_i \in \mathfrak{S}_{2N}$  at interim  $i$  that reshuffles the order of the evaluations sending  $n \in \{1, \dots, 2N\}$  to  $\sigma_i(n) \in \{1, \dots, 2N\}$ . Note that, if  $n \in \{1, \dots, N\}$  and  $\sigma_i(n) \in \{N+1, \dots, 2N\}$ , we are permuting an evaluation of the first agent with an evaluation of the second agent in the comparison and vice versa. It can also happen that we instead permute evaluations of the same agents. The difference between the two cases is important for the definition of the following permutation statistic:

$$T_{N,k}^{(j)}(\sigma_{1:k}) = \left| \sum_{i=1}^k \left( \sum_{n=1}^N e_{\sigma_i(n),i}(j) - \sum_{n=N+1}^{2N} e_{\sigma_i(n),i}(j) \right) \right|. \quad (1)$$

In other words,  $T_{N,k}^{(j)}(\sigma_{1:k})$  is the absolute value of the sum of differences of all evaluations until interim  $k$  after consecutive permutations of the concatenation of the two agents' evaluations by  $\sigma_1, \dots, \sigma_k \in \mathfrak{S}_{2N}$ . Let  $\mathbf{C} \subseteq \mathbf{C}_0$  be a subset of the set of considered hypothesis and denote

$$\bar{T}_{N,k}^{(\mathbf{C})}(\sigma_{1:k}) = \max_{j \in \mathbf{C}} T_{N,k}^{(j)}(\sigma_{1:k}).$$

**AdaStop: adaptive stopping algorithm using step-down method and group sequential permutation tests.** Algorithm 1 specifies the AdaStop test. It depends on the values of the boundary thresholds. Some implementation details are discussed below.

*Choice of permutations.* Instead of using all the permutations as it was done previously when comparing two agents, one may use a random subset of all permutations  $\mathcal{S}_k \subset \{\sigma_{1:k}, \forall i \leq k, \sigma_i \in \mathfrak{S}_{2N}\}$  to speed-up computations. The theoretical guarantees persist as long as the choice of the permutations is made independent on the data. Using a small number of permutations will decrease the total power of the test, but with a sufficiently large number of random permutations (typically for the values of  $N$  and  $K$  considered,  $10^4$  permutations are sufficient) the loss in power is acceptable.

$T_{N,k}$  is invariant by permutation of the first half and the second half of a group. In essence, choosing a permutation is equivalent to choosing the signs in  $\sum_{n=1}^N e_{\sigma_i(n),i}(j) - \sum_{n=N+1}^{2N} e_{\sigma_i(n),i}(j)$ . And because we take the absolute value, we obtain that there are  $\frac{1}{2} \binom{2N}{N}$  possible permutations in the first interim that give unique values to  $T_{N,1}$ . Then, by choosing permutation for the other interim, there are  $\frac{1}{2} \binom{2N}{N}^k$  possible permutations giving unique values to  $T_{N,k}$ .

Then, we use a parameter  $m \in \mathbb{N}$  and the number of permutations used at interim  $k$  will be  $|\mathcal{S}_k| = m_k = \min\left(m, \frac{1}{2} \binom{2N}{N}^k\right)$ , i.e. whenever possible, we use all the permutations and if this is too much, we use random permutations.

*Definition of the boundaries.* With these permutations, we define  $B_{N,k}^{(\mathbf{C})}$  such that

$$B_{N,k}^{(\mathbf{C})} = \inf \left\{ b > 0 : \frac{1}{m_k} \sum_{\sigma \in \widehat{\mathcal{S}}_k} \mathbb{1}\{\overline{T}_{N,k}^{(\mathbf{C})}(\sigma_{1:k}) \geq b\} \leq q_k \right\}. \quad (2)$$

where  $\sum_{j=1}^k q_j \leq \frac{k\alpha}{K}$  and where  $\widehat{\mathcal{S}}_k$  is the subset of  $\mathcal{S}_k$  such that the statistic associated to the permutation would not have rejected before. Formally,  $\widehat{\mathcal{S}}_k$  is the following set of permutations  $\widehat{\mathcal{S}}_k = \left\{ \sigma_{1:k} : \forall m < k, \overline{T}_{N,m}^{(\mathbf{C})}(\sigma_{1:m}) \leq B_{N,m}^{(\mathbf{C})} \right\}$ . Note that  $q_1$  is not equal to  $\alpha/K$ . Due to discreteness (we use an empirical quantile over a finite number of values),  $q_1$  is chosen equal to  $\lfloor \frac{\alpha}{2K} \binom{2N}{N} \rfloor / \binom{1}{2} \binom{2N}{N}$ , and similarly  $q_2$  is chosen to be as large as possible while having  $q_1 + q_2$  smaller than  $2\alpha/K$ , and so on for  $q_i$  for  $3 \leq i \leq k$ .

---

**Algorithm 1:** AdaStop (main algorithm)

---

**Parameters:** Agents  $A_1, A_2, \dots, A_L$ , environment  $\mathcal{E}$ , comparison pairs  $(c_i)_{i \leq L}$  where  $c_i$  is a couple of two agents that we want to compare. Integers  $K, N \in \mathbb{N}^*$ , test parameter  $\alpha$ .

```

1 Define  $LNK$  different seeds  $(s_{l,n,k})_{l \leq L, n \leq N, k \leq K}$ .
2 Set  $\mathbf{C} = \{1, \dots, J\}$  the set of indices for the comparisons we want to do.
3 for  $k = 1, \dots, K$  do
4   for  $l = 1 \dots L$  do
5     Train agent  $A_l$  on environment  $\mathcal{E}$  with the seeds  $s_{l,1,k}, \dots, s_{l,N,k}$ .
6     Collect the  $N$  evaluations of agent  $A_l$ .
7   end
8   while True do
9     Compute the boundaries  $B_{N,k}^{(\mathbf{C})}$  from Equation (2).
10    if  $T_{N,k}^{(\mathbf{C})}(\text{id}) > B_{N,k}^{(\mathbf{C})}$  then
11      Reject  $H_{j_{\max}}$  where  $j_{\max} = \arg \max ( \overline{T}_{N,k}^{(j)}(\text{id}), j \in \mathbf{C} )$ .
12      Update  $\mathbf{C} = \mathbf{C} \setminus \{j_{\max}\}$ 
13    else
14      Break the while loop.
15    end
16  end
17  if  $\mathbf{C} = \emptyset$  then Break the loop and returns the answers. ;
18  if  $k = K$  then Then accept all hypotheses remaining in  $\mathbf{C}$ . ;
19 end

```

---

## 5 Theoretical guarantees

### 5.1 Control on the Family-wise Error

One of the basic properties of two-sample permutation tests is that when the null hypothesis is true, then all permutations are as likely to give a certain value and hence the law given the data is the uniform distribution over all permutations. Then, as a consequence of our choice of  $\overline{B}_{N,k}$

as a quantile of the law given the data, the algorithm has a probability to wrongly reject the hypothesis bounded by  $\alpha$ . This informal statement is made precise in the following theorem.

**Theorem 1** (Controlled family-wise error). *Suppose that  $\alpha \in (0, 1)$ , and consider the multiple testing problem  $H_j : P_j = P_k$  against  $H'_j : P_j \neq P_k$  for all the couples  $(j, k) \in \{c_1, \dots, c_J\}$ . Then, the test resulting from Algorithm 1 has a strong control on the Family-wise error for the multiple test, i.e. if we suppose that all the hypotheses  $H_i, i \in \mathbf{I}$  are true and the remainder are false, then*

$$\mathbb{P}(\exists j \in \mathbf{I} : \text{reject } \mathbf{H}_j) \leq \alpha.$$

The proof of Theorem 1 is postponed to the Appendix (Section C).

*Hypotheses of the test:* in Theorem 1 we show that Algorithm 1 tests the equality of the distributions  $P_j = P_k$  versus  $P_j \neq P_k$ , whereas in practice we would prefer to compare the means of the distribution  $\mu_j = \mu_k$  versus  $\mu_j \neq \mu_k$ . Doing the test on distributions is something that is often seen in non-parametric tests (see [21]) and it is justified because without strong concentration assumptions on the distributions, we lack control on the mean of the distributions. On the other hand, we show in the Appendix (Section E) that for  $N$  large the test of comparing the means  $\mu_j = \mu_k$  versus  $\mu_j \neq \mu_k$  has the right guarantees (FWE smaller than  $\alpha$ ), this shows that even though we test the distributions, we also have an approximate test on the means.

*Power of the test:* in Theorem 1 there is no information on the power of the test. We show that, for any  $N, K$ , the test is of level  $\alpha$ . Having information on the power allows us to give a rule for the choice of  $N$  and  $K$  but power analysis in non-parametric setting is in general hard, and it is outside the scope of this article. Instead, we compute empirically the power of our test and show that we perform well empirically compared to non-adaptive approaches. See Section 6.2 for the empirical power study on a Mujoco environment.

## 5.2 Heuristic for early accept for even faster decisions

AdaStop only rejects hypotheses early, it is in addition also possible to accept some hypotheses early. When comparing four agents, we could have Agent  $A_1$  performs similarly to  $A_2$  and  $A_3$  performs similarly to  $A_4$ . In such a case, AdaStop would use up all the maximum number of comparisons and would stop only when  $k = K$  because it will never be able to reject the comparisons  $A_1$  vs.  $A_2$ , and  $A_3$  vs.  $A_4$ . To solve this problem, we *early accept* the equality of agents that are statistically very similar. We proceed by analogy with the early reject methodology and construct a boundary under which the minimum of the test statistics  $T_{N,k}^{(j)}$  must be to accept. The details of the implementation and its effect on the Walker environment are given in the Appendix (see Section G).

## 6 Experimental study

In this section, we first illustrate the statistical properties of AdaStop on toy examples for which the performances of agents are simulated. Then, we compare empirically AdaStop to non-adaptive approach. Finally, we exemplify the use of AdaStop on a real case to compare several deep-RL agents, each from a different library. We believe this is a key section demonstrating the strength of our approach from a practitioner perspective.

### 6.1 Toy examples

To start with, let us demonstrate the execution of our algorithm on toy examples. In what follows, we use  $\mathcal{N}(\mu, \sigma^2)$  for the normal distribution with the mean  $\mu$  and the standard deviation  $\sigma$ ,  $t(\mu, \nu)$

for the  $t$ -Student distribution with the mean  $\mu$  and the degree of freedom  $\nu$ ,  $\mathcal{M}_{\frac{1}{2}}^{\mathcal{N}}(\mu_1, \sigma_1^2; \mu_2, \sigma_2^2)$  for the mixture of Gaussians  $\mathcal{N}(\mu_1, \sigma_1^2)$  and  $\mathcal{N}(\mu_2, \sigma_2^2)$  and  $\mathcal{M}_{\frac{1}{2}}^t(\mu_1, \nu_1; \mu_2, \nu_2)$  for the mixture of  $t$ -Student distributions  $t(\mu_1, \nu_1)$  and  $t(\mu_2, \nu_2)$ . In the two examples, we suppose that we compare two agents  $A_1$  and  $A_2$  for which we know the distributions of their performances. Those two examples are summarized in Fig. 1 (top), where  $\Delta$  denotes the distance between two modes of the mixtures ( $\Delta = |\mu_1 - \mu_2|$ ). For both cases, we execute AdaStop with  $K = 5$ ,  $N = 5$  and  $\alpha = 0.05$ . We also limit the maximum number of permutations to  $B = 10\,000$ . These two cases are executed without early accept. In Fig. 1 (bottom), we plot the rate of rejection of the null hypothesis, stating that compared distributions are the same. By varying  $\Delta$  from 0 to 1, we observe the evolution of the power of tests. The bottom line (Case 1) shows that the power of the test stays around 0.05 level for all  $\Delta$ . Indeed, even though the distributions in the comparison are different, their means remain the same. If the null hypothesis states that the means are the same, then AdaStop will return the correct answer with type I error not larger than 0.11 for  $\alpha = 0.05$ . This is an illustration of the fact that in addition to performing a test on the distributions, AdaStop approximates the test on the means as shown theoretically in the asymptotic result in Appendix Section E and as discussed at the end of Section 5. In contrast, the top line (Case 2) demonstrates the increasing trend, reaching the level close to 1 after  $\Delta = 0.6$ , which corresponds to the case when two modes are separated by 3 standard deviations from both sides. To obtain error bars, we have executed each comparison  $M = 5\,000$  number of times, and we plot confidence intervals corresponding to  $3\sigma/\sqrt{M}$  (more than 99% of confidence) where  $\sigma$  is a standard deviation of the test decision. In addition to Cases 1 and 2, we also provide a third experiment with a comparison of 10 agents in Appendix Section H.3.

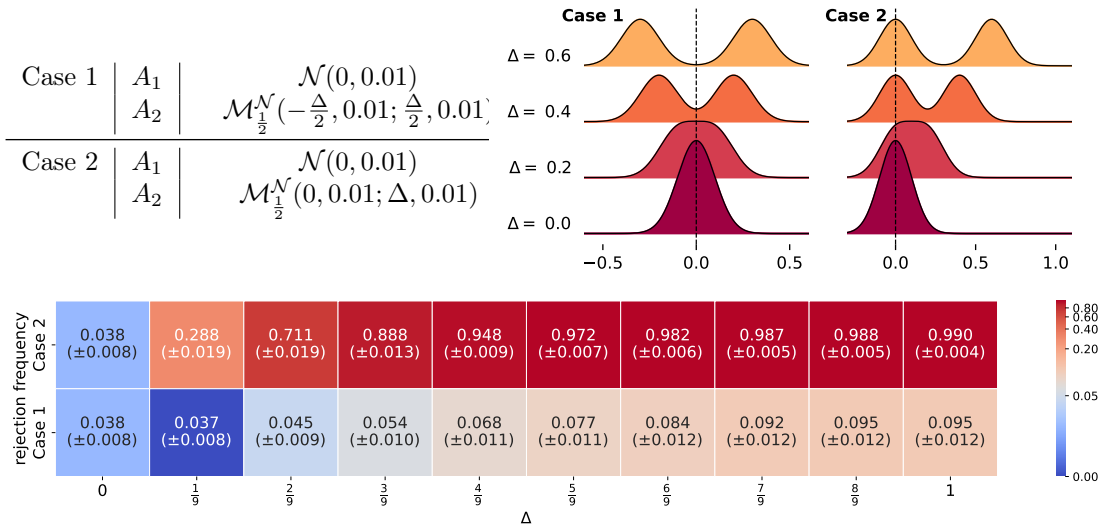


Figure 1: Toy examples 1 and 2 with an illustration of Gaussian mixtures (top) and rejection frequency of null hypothesis according to  $\Delta$  (bottom).

## 6.2 Comparison with non-adaptive approach

The article [7] shares the same objective as ours. However, it uses non-adaptive tests unlike AdaStop. We follow their experimental protocol and compare AdaStop and non-adaptive ap-

| $N \setminus K$ | 2              | 3              | 4              | 5             | 6              |
|-----------------|----------------|----------------|----------------|---------------|----------------|
| 1               | 0.0 (2.0)      | 0.0 (3.0)      | 0.277 (4.0)    | 0.465 (5.0)   | 0.56 (6.0)     |
| 2               | 0.005 (4.0)    | 0.33 (6.0)     | 0.531 (6.96)   | 0.602 (8.345) | 0.704 (9.198)  |
| 3               | 0.213 (5.984)  | 0.506 (8.085)  | 0.627 (10.212) | 0.689 (11.02) | 0.785 (11.52)  |
| 4               | 0.371 (7.616)  | 0.611 (9.648)  | 0.744 (11.7)   | 0.82 (12.08)  | 0.845 (13.89)  |
| 5               | 0.465 (9.044)  | 0.691 (11.031) | 0.78 (13.28)   | 0.853 (14.27) | 0.884 (14.532) |
| 6               | 0.534 (10.4)   | 0.73 (12.306)  | 0.837 (14.124) | 0.89 (14.94)  | 0.911 (15.978) |
| 7               | 0.599 (11.358) | 0.779 (13.404) | 0.879 (14.916) | 0.92 (15.495) | 0.939 (16.404) |
| 8               | 0.635 (12.322) | 0.818 (13.95)  | 0.885 (15.824) | 0.942 (16.03) | 0.961 (17.268) |

Table 1: Empirical statistical power and effective number of seeds used by AdaStop as a function of the total number of seeds ( $N \times K$ ) when comparing SAC and TD3 on HalfCheetah. The number of permutations is 10 000 and  $\alpha$  is 0.05. AdaStop is run 1000 times for every  $(N, K)$  pair. The shades of blue are proportional to a value in  $[0, 1]$  (we use the same color scheme as in [6])

proaches empirically in terms of statistical power as a function of the sample size (number of seeds). In particular, we use the data they provide for a SAC agent and for a TD3 agent evaluated on HalfCheetah (See Fig. 8 in Appendix). Similarly to [7, Table 15], we compute the empirical statistical power of AdaStop as a function of the number of seeds of the RL algorithms (Table 1). To compute the empirical statistical power for a given number of seeds, we make the hypothesis that the distributions of SAC and TD3 agents evaluations are different, and we count how many times AdaStop decides that one agent is better than the other (number of true positives). As the test is adaptive, we also report the effective number of seeds necessary to make a decision with 0.95 confidence level. For each number of seeds, we have launched AdaStop 1000 times. For example, when comparing SAC and TD3 agents performances on HalfCheetah using AdaStop with  $N = 4$  and  $K = 5$ , the maximum number of seeds that could be used is  $N \times K = 20$  without early stopping. However, we observe in Table 1 that when  $N = 4$  and  $K = 5$ , AdaStop can make a decision with a power of 0.82 using only 12 seeds. In [7, Table 15], the minimum number of seeds required to obtain a statistical power of 0.8 when comparing SAC and TD3 agents is 15 when using a t-test, a Welch test, or a bootstrapping test.

### 6.3 AdaStop for Deep Reinforcement Learning

In this section, we use AdaStop to compare four commonly-used Deep RL algorithms on the MuJoCo<sup>3</sup> ([28]) benchmark for high-dimensional continuous control, as implemented in Gymnasium<sup>4</sup>. More specifically, we train agents on the Ant-v3, HalfCheetah-v3, Hopper-v3, Humanoid-v3, and Walker-v3 environments using PPO from rllberry [9], SAC from Stable-Baselines3 [26], DDPG from CleanRL [16], and TRPO from MushroomRL [8]. PPO, SAC, DDPG, and TRPO are all deep reinforcement learning algorithms used for high-dimensional continuous control tasks. We chose these algorithms because they are commonly used and represent a diverse set of approaches from different RL libraries. We employ different RL libraries in order to demonstrate the flexibility of AdaStop, as well as to provide examples on how to integrate these popular libraries with AdaStop. On-policy algorithms, such as PPO and TRPO, update their policies based on the current data they collect during training, while off-policy algorithms, such as SAC and DDPG, can learn from any data, regardless of how it was collected. This difference may make off-policy

<sup>3</sup>We use MuJoCo version 2.1, as required by <https://github.com/openai/mujoco-py>

<sup>4</sup><https://github.com/Farama-Foundation/Gymnasium>

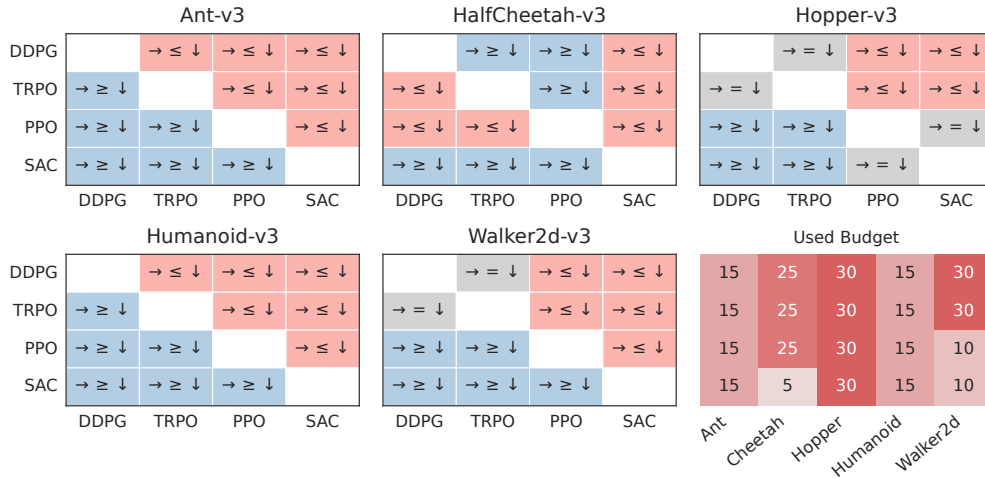


Figure 2: AdaStop decision tables for each MuJoCo environment, and the budget used to make these decisions (bottom right). See Appendix H.5 for further details.

algorithms more sample-efficient but less stable than on-policy algorithms. Furthermore, SAC typically outperforms DDPG in continuous control robotics tasks due to its ability to handle stochastic policies, while DDPG restricts itself to deterministic policies [15]. Finally, PPO is generally accepted to perform better than TRPO in terms of cumulative reward [10]. For each algorithm, we fix the hyperparameters to those used by the library authors in their benchmarks for one of the MuJoCo environments. In Appendix H.5, we provide the values that were used and further discuss the experimental setup.

We compare the four agents in each environment using AdaStop with  $N = 5$  and  $K = 6$ . Fig. 2 shows the AdaStop decision tables in each environment, as well as the number of evaluations per agent and environment. As expected, SAC ranks first in every environment. In contrast, DDPG is ranked last in four out of five environments. Such performance may be a product of the restriction to deterministic policies, which hurts exploration in high-dimensional continuous control environments such as the MuJoCo benchmarks. Furthermore, we observe that the expected ordering between PPO and TRPO is generally respected, with TRPO outperforming PPO in only one environment. Finally, we note that PPO performs particularly well in some environments with its performance comparable to SAC, while also being the worst-performing algorithm for HalfCheetah-v3. Overall, the AdaStop rankings in these experiments are not unexpected.

Moreover, our experiments demonstrate that AdaStop can make decisions with fewer evaluations, thus reducing the computational cost of comparing Deep RL agents. For instance, as expected, SAC outperformed other agents on the environment HalfCheetah-v3, and AdaStop required only five evaluations to make all decisions involving SAC. Additionally, we observed that the decisions requiring the entire budget of  $NK = 30$  evaluations were the ones in which AdaStop determined that the agents were equivalent in terms of their performance. With the early-accept heuristic proposed in 5.2 and detailed in the Appendix (Section G), this process can be sped-up and for instance in the Walker2d-v3 environment, early accept allows us to take all the decisions after only 10 seeds.



## 7 Conclusion and future works

In this paper, we introduce AdaStop which is a sequential group test aiming at ranking the performance of agents. Our goal is to provide statistical grounding to define the number of times a set of agents should be run to be able to confidently rank them, up to some level  $\alpha$ . This is the first such test, and we think this is a major contribution to computational studies in reinforcement learning and other domains. Using AdaStop is simple, and we provide open source software to use it. From a statistical point of view, we have been able to demonstrate the soundness of AdaStop as a statistical test. Experiments demonstrate how AdaStop may be used in practice, even in a retrospective manner using logged data. The next step of our study is the case where we compare agents facing a collection of different tasks, such as the Atari games. Properly dealing with such experimental settings require a careful statistical analysis. Moreover, additional theoretical guarantees for the early accept and to control the power of AdaStop would also greatly improve its interpretability.

## 8 Ethical statement

We believe that there are no ethical concerns with our work. On the contrary, our work provides theory and tools for reproducible and open research. We hope AdaStop will be used for RL research so that, moving forward, one can be confident when saying a new agent is better than another. As a side-note, this paper is also a step towards "green AI" by trying to use only the necessary amount of computation to make a decision.

## References

- [1] Agarwal, R., Schwarzer, M., Castro, P.S., Courville, A.C., Bellemare, M.: Deep reinforcement learning at the edge of the statistical precipice. *Advances in neural information processing systems* **34**, 29304–29320 (2021)
- [2] Bellemare, M.G., Naddaf, Y., Veness, J., Bowling, M.: The arcade learning environment: An evaluation platform for general agents. *Journal of Artificial Intelligence Research* **47**, 253–279 (2013)
- [3] Benjamini, Y., Hochberg, Y.: Controlling the false discovery rate: a practical and powerful approach to multiple testing. *Journal of the Royal statistical society: series B (Methodological)* **57**(1), 289–300 (1995)
- [4] Bonferroni, C.: *Teoria statistica delle classi e calcolo delle probabilita*. Pubblicazioni del R Istituto Superiore di Scienze Economiche e Commerciali di Firenze **8**, 3–62 (1936)
- [5] Chung, E., Romano, J.P.: Exact and asymptotically robust permutation tests. *The Annals of Statistics* **41**(2), 484 – 507 (2013). <https://doi.org/10.1214/13-AOS1090>, <https://doi.org/10.1214/13-AOS1090>
- [6] Colas, C., Sigaud, O., Oudeyer, P.Y.: How many random seeds? statistical power analysis in deep reinforcement learning experiments. *arXiv preprint arXiv:1806.08295* (2018)
- [7] Colas, C., Sigaud, O., Oudeyer, P.Y.: A hitchhiker’s guide to statistical comparisons of reinforcement learning algorithms. *arXiv preprint arXiv:1904.06979* (2019)

- 
- [8] D’Eramo, C., Tateo, D., Bonarini, A., Restelli, M., Peters, J.: Mushroomrl: Simplifying reinforcement learning research. *Journal of Machine Learning Research* **22**(131), 1–5 (2021), <http://jmlr.org/papers/v22/18-056.html>
- [9] Domingues, O.D., Flet-Berliac, Y., Leurent, E., Ménard, P., Shang, X., Valko, M.: rlberry - A Reinforcement Learning Library for Research and Education (10 2021). <https://doi.org/10.5281/zenodo.5544540>, <https://github.com/rlberry-py/rlberry>
- [10] Engstrom, L., Ilyas, A., Santurkar, S., Tsipras, D., Janoos, F., Rudolph, L., Madry, A.: Implementation matters in deep policy gradients: A case study on ppo and trpo. *arXiv preprint arXiv:2005.12729* (2020)
- [11] Fisher, R.A.: Design of experiments. *British Medical Journal* **1**(3923), 554 (1936)
- [12] Flet-Berliac, Y., Ouhamma, R., Maillard, O.A., Preux, P.: Learning value functions in deep policy gradients using residual variance. In: *ICLR 2021-International Conference on Learning Representations* (2021)
- [13] Goodman, S.N., Fanelli, D., Ioannidis, J.P.: What does research reproducibility mean? *Science translational medicine* **8**(341), 341ps12–341ps12 (2016)
- [14] Gordon Lan, K., DeMets, D.L.: Discrete sequential boundaries for clinical trials. *Biometrika* **70**(3), 659–663 (1983)
- [15] Haarnoja, T., Zhou, A., Abbeel, P., Levine, S.: Soft actor-critic: Off-policy maximum entropy deep reinforcement learning with a stochastic actor. In: *International conference on machine learning*. pp. 1861–1870. PMLR (2018)
- [16] Huang, S., Dossa, R.F.J., Ye, C., Braga, J., Chakraborty, D., Mehta, K., Araújo, J.G.: Cleanrl: High-quality single-file implementations of deep reinforcement learning algorithms. *Journal of Machine Learning Research* **23**(274), 1–18 (2022), <http://jmlr.org/papers/v23/21-1342.html>
- [17] Jennison, C., Turnbull, B.W.: *Group sequential methods with applications to clinical trials*. CRC Press (1999)
- [18] Kaufmann, E., Koolen, W.M.: Mixture martingales revisited with applications to sequential tests and confidence intervals. *The Journal of Machine Learning Research* **22**(1), 11140–11183 (2021)
- [19] Klink, P., Yang, H., D’Eramo, C., Peters, J., Pajarinen, J.: Curriculum reinforcement learning via constrained optimal transport. In: Chaudhuri, K., Jegelka, S., Song, L., Szepesvari, C., Niu, G., Sabato, S. (eds.) *Proceedings of the 39th International Conference on Machine Learning*. *Proceedings of Machine Learning Research*, vol. 162, pp. 11341–11358. PMLR (17–23 Jul 2022), <https://proceedings.mlr.press/v162/klink22a.html>
- [20] Lattimore, T., Szepesvári, C.: *Bandit algorithms*. Cambridge University Press (2020)
- [21] Lehmann, E.L., Romano, J.P., Casella, G.: *Testing statistical hypotheses*, vol. 3. Springer (2005)
- [22] Mehta, C.R., Patel, N., Senchaudhuri, P., Tsiatis, A.: Exact permutational tests for group sequential clinical trials. *Biometrics* pp. 1042–1053 (1994)

- 
- [23] Pampallona, S., Tsiatis, A.A.: Group sequential designs for one-sided and two-sided hypothesis testing with provision for early stopping in favor of the null hypothesis. *Journal of Statistical Planning and Inference* **42**(1-2), 19–35 (1994)
- [24] Pitman, E.J.: Significance tests which may be applied to samples from any populations. *Supplement to the Journal of the Royal Statistical Society* **4**(1), 119–130 (1937)
- [25] Pocock, S.J.: Group sequential methods in the design and analysis of clinical trials. *Biometrika* **64**(2), 191–199 (1977)
- [26] Raffin, A., Hill, A., Gleave, A., Kanervisto, A., Ernestus, M., Dormann, N.: Stable-baselines3: Reliable reinforcement learning implementations. *Journal of Machine Learning Research* **22**(268), 1–8 (2021), <http://jmlr.org/papers/v22/20-1364.html>
- [27] Romano, J.P., Wolf, M.: Exact and approximate stepdown methods for multiple hypothesis testing. *SSRN Journal Electronic Journal* (2003). <https://doi.org/10.2139/ssrn.563267>, <https://doi.org/10.2139%2Fssrn.563267>
- [28] Todorov, E., Erez, T., Tassa, Y.: Mujoco: A physics engine for model-based control. In: 2012 IEEE/RSJ international conference on intelligent robots and systems. pp. 5026–5033. IEEE (2012)
- [29] Tukey, J.W.: The problem of multiple comparisons. *Multiple comparisons* (1953)
- [30] Wald, A.: Sequential Tests of Statistical Hypotheses. *The Annals of Mathematical Statistics* **16**(2), 117 – 186 (1945). <https://doi.org/10.1214/aoms/1177731118>, <https://doi.org/10.1214/aoms/1177731118>

## A Index of notations

- $\mathbb{E}[X]$ : expectation of the random variable  $X$ .
- $\mathfrak{S}_n$ : set of all the permutations of  $\{1, \dots, n\}$ .
- $H_j$ : denotes hypothesis  $j$  in a multiple test,  $H'_j$  denotes the alternative of hypothesis  $H_j$ .
- $\sigma$ : generic notation for a permutation. Element of  $\mathfrak{S}_n$  for some  $n \in \mathbb{N}^*$ .
- $e_i(j)$  or  $e_{i,k}(j)$ : performance measure that corresponds to run number  $i$  when doing the test for comparison  $j$ . See the beginning of Section 2.
- $\sigma_{1:k}$ : shorthand for the permutation that applies each  $\sigma_i$  to the elements  $(e_{n,i})_{n \leq 2N}$ , for interims from  $i = 1$  to  $i = k$ .
- $T_N(\sigma)$  and  $T_{N,k}^{(j)}(\sigma)$ : test statistics. See Equation (9) and Equation (1).
- $c_j$ : denotes a comparison. This is a couple in  $\{1, \dots, L\}^2$ .
- $j$ : shorthand for denoting comparison  $c_j$ .
- $\mathbf{C}_0$ : set of all the comparisons done in AdaStop.
- $\mathbf{C}$ : current set of undecided comparisons in AdaStop, a subset of  $\mathbf{C}_0$ .
- $\mathbf{C}_k$ : state of  $\mathbf{C}$  at interim  $k$  in AdaStop.
- $\mathbf{I}$ : set of true hypotheses.
- FWE: family-wise error, see Definition 1.
- $\mathcal{N}(\mu, \sigma^2)$ : law of a Gaussian with mean  $\mu$  and variance  $\sigma^2$ .
- $t(\mu, \nu)$ : law of a translated Student distribution with center of symmetry  $\mu$  and  $\nu$  degrees of freedom.
- $\mathcal{M}_{\frac{1}{2}}^{\mathcal{N}}(\mu_1, \sigma_1^2; \mu_2, \sigma_2^2)$ : mixture of two normal distributions.
- $\mathcal{M}_{\frac{1}{2}}^t(\mu_1, \nu_1; \mu_2, \nu_2)$ : mixture of two Student distributions.
- $\mathbb{P}_{H_j, j \in \mathbf{I}}$ : probability distribution when  $H_j, j \in \mathbf{I}$  are true and  $H_j, j \notin \mathbf{I}$  are false.

## B Recap on hypothesis testing

To be fully understood, this paper requires the knowledge of some notions of statistics. In the hope of widening the potential audience of this paper, we provide a short recap of essential notions of statistics related to hypothesis testing.

## B.1 Type I and type II error

In its most simple form, a statistical test is aimed at deciding, whether a given collection of data  $X_1, \dots, X_N$  adheres to some hypothesis  $H_0$  (called the null hypothesis), or if it is a better fit for an alternative hypothesis  $H_1$ . Typically,  $H_0 : \mu = \mu_0$  and  $H_1 : \mu \neq \mu_0$  where  $\mu$  is the mean of the distribution of  $X_1, \dots, X_N$ . Because  $\mu$  is unknown, it has to be estimated using the data, and often that is done using the empirical mean  $\hat{\mu} = \frac{1}{N} \sum_{i=1}^N X_i$ .  $\hat{\mu}$  is random and some deviation from  $\mu$  is to be expected, the theory of hypothesis tests is concerned in finding a threshold  $c$  such that if  $|\hat{\mu} - \mu_0| > c$  then we say that  $H_0$  is false because the deviation is more than what was expected by the theory.

A slightly more complex problem is to consider two samples  $X_1, \dots, X_N$  and  $Y_1, \dots, Y_N$  and do a two-sample test deciding whether the mean of the distribution of the  $X_i$ 's is equal to the mean of the distribution of the  $Y_i$ 's.

In both cases, the result of a test is either accept  $H_0$  or reject  $H_0$ . This answer is not a ground truth: there is some probability that we make an error. However, this probability of error is often controlled and can be decomposed in type I error and type II errors (often denoted  $\alpha$  and  $\beta$  respectively, see Table 2). Please note that the problem is not symmetric: failing to

|                 | $H_0$ is true         | $H_0$ is false        |
|-----------------|-----------------------|-----------------------|
| We accept $H_0$ | No error              | type II error $\beta$ |
| We reject $H_0$ | type I error $\alpha$ | No error              |

Table 2: Type I and type II error.

reject the null hypothesis does not mean that the null hypothesis is true. It can be that there is not enough data to reject  $H_0$ .

## B.2 Multiple tests and FWE

When doing simultaneously several statistical tests, one must be careful that the error of each test accumulate and if one is not cautious, the overall error may become non-negligible. As a consequence, multiple strategies have been developed to deal with multiple testing problem.

To deal with the multiple testing problem, the first step is to define what is an error. There are several definitions of error in multiple testing, among which is the False discovery rate, which measures the expected proportion of false rejections. Another possible measure of error is the Family-wise error (this is the error we use in this article) and which is defined as the probability to make at least one false rejection:

$$\text{FWE} = \mathbb{P}_{H_j, j \in \mathbf{I}} (\exists j \in \mathbf{I} : \text{reject } H_j),$$

where  $\mathbb{P}_{H_j, j \in \mathbf{I}}$  is used to denote the probability when  $\mathbf{I}$  is the set of indices of the hypotheses that are actually true (and  $\mathbf{I}^c$  the set of hypotheses that are actually false). To construct a procedure with FWE smaller than  $\alpha$ , the simplest method is perhaps Bonferroni correction [4] in which one would use one statistical test for each of the  $J$  couple of hypotheses to be tested. And then, one would tune each hypothesis test to have a type I error  $\alpha/J$  where  $J$  is the number of tests that have to be done. The union bound then implies that the FWE is bounded by  $\alpha$ :

$$\text{FWE} = \mathbb{P}_{H_j, j \in \mathbf{I}} \left( \bigcup_{j \in \mathbf{I}} \{\text{reject } H_j\} \right) \leq \sum_{i \in \mathbf{I}} \mathbb{P}_{H_j, j \in \mathbf{I}} (\text{reject } H_j) \leq |\mathbf{I}| \frac{\alpha}{J} \leq \alpha.$$

which is the probability of rejecting the hypothesis given that it is actually true. Bonferroni correction has the advantage of being very simple to implement, but it is often very conservative and the final FWE would be most often a lot smaller than  $\alpha$ . An alternative method that performs well in practice is the step-down method that we use in this article and which is presented in Section F.2.

## C Proof of Theorem 1

The proof of Theorem 1 is based on an extension of the proof of the control of FWE in the non-sequential case and the proof of the step-down method (see [27]). The interested reader may refer to Lemma 1 in the Appendix where we reproduce the proof of the bound on FWE for simple permutation tests as it is a good introduction to permutation tests. The proof proceeds as follows: first, we prove weak control on the FWE by decomposing the error as the sum of the errors on each interim and using the properties of permutation tests to show that the error done at each interim is controlled by  $\alpha/K$ . Then, using the step-down method construction, we show that the strong control of the FWE is a consequence of the weak control because of monotony properties on the boundary values of a permutation test.

### C.1 Simplified proof for $L = 2$ agents, and $K = 1$

The proof of the theorem for this result is a bit technical. We begin by showing the result in a very simplified case with  $L = 2$  agents, and  $K = 1$ .

**Lemma 1.** *Let  $X_1, \dots, X_N$  be i.i.d from a distribution  $P$  and  $Y_1, \dots, Y_N$  be i.i.d. from a distribution  $Q$ . Denote  $Z_1^{2N} = X_1, \dots, X_N, Y_1, \dots, Y_N$  be the concatenation of  $X_1^N$  and  $Y_1^N$ . Let  $\alpha \in (0, 1)$  and define  $B_N$  such that*

$$B_N = \inf \left\{ b > 0 : \frac{1}{(2N)!} \sum_{\sigma \in \mathfrak{S}_{2N}} \mathbb{1} \left\{ \frac{1}{N} \sum_{i=1}^N (Z_{\sigma(i)} - Z_{\sigma(N+i)}) > b \right\} \leq \alpha \right\}.$$

Then, if  $P = Q$ , we have

$$\mathbb{P} \left( \frac{1}{N} \sum_{i=1}^N (X_i - Y_i) > B_N \right) \leq \alpha$$

*Proof.* Denote  $T(\sigma) = \frac{1}{N} \sum_{i=1}^N (Z_{\sigma(i)} - Z_{\sigma(N+i)})$ . Since  $P = Q$ , for any  $\sigma, \sigma' \in \mathfrak{S}_{2N}$  we have  $T(\sigma) \stackrel{d}{=} T(\sigma')$ . Then, because  $B_N$  does not depend on the permutation  $\sigma$  (but it depends on the values of  $Z_1^{2N}$ ), we have, for any  $\sigma \in \mathfrak{S}_{2N}$

$$\mathbb{P}(T(\text{id}) > B_N) = \mathbb{P}(T(\sigma) > B_N)$$

Now, take the sum over all the permutations,

$$\begin{aligned} \mathbb{P}(T(\text{id}) > B_N) &= \frac{1}{(2N)!} \sum_{\sigma \in \mathfrak{S}_{2N}} \mathbb{E}[\mathbb{1}\{T(\sigma) > B_N\}] \\ &= \mathbb{E} \left[ \frac{1}{(2N)!} \sum_{\sigma \in \mathfrak{S}_{2N}} \mathbb{1}\{T(\sigma) > B_N\} \right] \leq \alpha \end{aligned}$$

which proves the result. □ □

Next, we prove weak control in the general case.

## C.2 Proof of Theorem 1

In this section, we use the shorthand  $\mathbb{P}$  instead of  $\mathbb{P}_{H_j, j \in \mathbf{I}}$  and omit  $H_j, j \in \mathbf{I}$  because  $\mathbf{I}$  will always be the set of true hypotheses and the meaning should be clear from the context.

**Weak control on FWE:** First, we prove weak control on the FWE. This means that we suppose that  $\mathbf{I} = \{1, \dots, J\}$ : all the hypotheses are true, and we control the probability to make at least one rejection. We have,

$$\text{FWE} = \mathbb{P}(\exists j \in \mathbf{I} : H_j \text{ is rejected}).$$

We decompose the FWE on the diverse interims.

$$\text{FWE} = \sum_{k=1}^K \mathbb{P} \left( \bar{T}_{N,k}^{(\mathbf{I})}(\text{id}) > B_{N,k}^{(\mathbf{I})}, \text{NR}_k(\text{id}) \right), \quad (3)$$

where  $\text{NR}_k(\sigma_{1:k}) = \{\forall m < k, \bar{T}_{N,m}^{(\mathbf{I})}(\sigma_{1:k}) \leq B_{N,m}^{(\mathbf{I})}\}$  is the event on which we did not reject before. We use  $\sigma_{1:k}$  and not only  $\text{id}$  as this will be useful later on (See Equation (4)).

Then, similarly as in the proof of Lemma 1, we want to use the invariance by permutation to make the link with the definition of  $B_{N,k}^{(\mathbf{I})}$ . For this purpose, we introduce the following lemma, that we prove in Appendix D.

**Lemma 2.** *We have that for  $k \leq K$ , for any  $\sigma_{1:k}$  concatenation of  $k$  permutations,*

$$(\bar{T}_{N,l}^{(\mathbf{I})}(\text{id}), B_{N,l}^{(\mathbf{I})})_{l \leq k} \stackrel{d}{=} (\bar{T}_{N,l}^{(\mathbf{I})}(\sigma_{1:l}), B_{N,l}^{(\mathbf{I})})_{l \leq k}.$$

Using Lemma 2, we have for any  $\sigma_{1:k}$

$$\mathbb{P} \left( \bar{T}_{N,k}^{(\mathbf{I})}(\text{id}) > B_{N,k}^{(\mathbf{I})}, \text{NR}_k(\text{id}) \right) = \mathbb{P} \left( \bar{T}_{N,k}^{(\mathbf{I})}(\sigma_{1:k}) > B_{N,k}^{(\mathbf{I})}, \text{NR}_k(\sigma_{1:k}) \right) \quad (4)$$

Hence, injecting this in Equation (3),

$$\begin{aligned} \text{FWE} &\leq \sum_{k=1}^K \frac{1}{m_k} \sum_{\sigma_{1:k} \in \mathcal{S}_k} \mathbb{P} \left( \bar{T}_{N,k}^{(\mathbf{I})}(\sigma_{1:k}) > B_{N,k}^{(\mathbf{I})}, \text{NR}_k(\sigma_{1:k}) \right) \\ &= \sum_{k=1}^K \mathbb{E} \left[ \frac{1}{m_k} \sum_{\sigma_{1:k} \in \mathcal{S}_k} \mathbb{1} \left\{ \bar{T}_{N,k}^{(\mathbf{I})}(\sigma_{1:k}) > B_{N,k}^{(\mathbf{I})}, \text{NR}_k(\sigma_{1:k}) \right\} \right] \end{aligned}$$

Then, use that  $\sigma_{1:k} \in \widehat{\mathcal{S}}_k$  if and only if  $\sigma_{1:k} \in \mathcal{S}_k$  and  $\text{NR}_k(\sigma_{1:k})$  is true. Hence,

$$\text{FWE} \leq \sum_{k=1}^K \mathbb{E} \left[ \frac{1}{m_k} \sum_{\sigma_{1:k} \in \widehat{\mathcal{S}}_k} \mathbb{1} \left\{ \bar{T}_{N,k}^{(\mathbf{I})}(\sigma_{1:k}) > B_{N,k}^{(\mathbf{I})} \right\} \right] \leq \sum_{k=1}^K q_k \leq \alpha$$

where we used the definition of  $B_{N,k}^{(\mathbf{I})}$  to make the link with  $\alpha$

**Strong control of FWE:** To prove strong control, it is sufficient to show the following Lemma (see Appendix D for a proof), which is an adaptation of the proof of step-down multiple-test strong control of FWE from [27].

**Lemma 3.** *Suppose that  $\mathbf{I} \subset \{1, \dots, J\}$  is the set of true hypotheses. We have*

$$\text{FWE} = \mathbb{P}(\exists j \in \mathbf{I} : H_j \text{ is rejected}) \leq \mathbb{P}(\exists k \leq K : \bar{T}_{N,k}^{(\mathbf{I})}(\text{id}) > B_{N,k}^{(\mathbf{I})}).$$

Lemma 3 shows that to control the FWE, it is sufficient to control the probability to reject on  $\mathbf{I}$  given by  $\mathbb{P}(\exists k \leq K : \bar{T}_{N,k}^{(\mathbf{I})}(\sigma_{1:k}) > B_{N,k}^{(\mathbf{I})})$  and this quantity, in turns, is exactly the FWE of the restricted problem of testing  $(H_j)_{j \in \mathbf{I}}$  against  $(H'_j)_{j \in \mathbf{I}}$ . In other words, Lemma 3 says that to prove strong FWE control for our algorithm, it is sufficient to prove weak FWE control, and we already did that in the first part of the proof.

## D Proof of Lemmas

### D.1 Proof of Lemma 2

In this section, for an easier comprehension, we change the notation for the performance measure  $e_{n,k}^{(j)}(\sigma)$  and denote by  $e_{n,k}(A_i)$  the  $n^{\text{th}}$  performance value of agent  $A_i$  at interim  $k$ . In effect, this means that for the comparison  $j$  of agent  $A_i$  versus agent  $A_l$ , we have the equality  $e_{n,k}(A_i) = e_{n,k}^{(j)}(\text{id})$  for  $n \leq N$  and  $e_{n,k}(A_l) = e_{N+n,k}^{(j)}(\text{id})$ .

We denote the comparisons by  $(c_i)_{i \in \mathbf{I}}$ , they describe a graph with the nodes being the agents denoted  $1, \dots, L$  and  $(j_1, j_2)$  has an edge if  $(j_1, j_2) \in (c_i)_{i \in \mathbf{I}}$  is one of the comparisons that corresponds to a true hypothesis. This graph is not necessarily connected, we denote  $C(i)$  the connected component to which node  $a$  (e.g. agent  $a$ ) belongs, i.e. for any  $a_1, a_2 \in C(a)$  there exists a path going from  $a_1$  to  $a_2$ . Remark that  $C(a)$  cannot be equal to the singleton  $\{a\}$ , because it would mean that all the comparisons with  $a$  are in fact false hypotheses, and then  $a$  would not belong to a couple in  $\mathbf{I}$ .

Then, it follows from the construction of permutation test that jointly on  $k \leq K$  and  $a_1, a_2 \in C(i)$ , we have  $T_{N,k}^{(a_1, a_2)}(\text{id}) \stackrel{d}{=} T_{N,1}^{(a_1, a_2)}(\sigma_{1:k})$  for any  $\sigma_1, \dots, \sigma_k \in \mathfrak{S}_{2N}$ .

Let us illustrate that on an example. Suppose that  $N = 2$  and  $J = 3$ . Consider the permutation

$$\sigma_1 = \begin{pmatrix} 1 & 2 & 3 & 4 \\ 3 & 1 & 2 & 4 \end{pmatrix}$$

Because all the evaluations are i.i.d., we have the joint equality in distribution

$$\left( \begin{array}{l} |e_{1,1}(A_1) + e_{2,1}(A_1) - e_{1,1}(A_2) - e_{2,1}(A_2)| \\ |e_{1,1}(A_3) + e_{2,1}(A_3) - e_{1,1}(A_2) - e_{2,1}(A_2)| \\ |e_{1,1}(A_1) + e_{2,1}(A_1) - e_{1,1}(A_3) - e_{2,1}(A_3)| \end{array} \right) \stackrel{d}{=} \left( \begin{array}{l} |e_{1,1}(A_1) + e_{2,1}(A_2) - e_{1,1}(A_1) - e_{2,1}(A_2)| \\ |e_{1,1}(A_3) + e_{2,1}(A_2) - e_{1,1}(A_3) - e_{2,1}(A_2)| \\ |e_{1,1}(A_1) + e_{2,1}(A_3) - e_{1,1}(A_1) - e_{2,1}(A_3)| \end{array} \right)$$

and hence,

$$(T_{N,1}^{(j)}(\text{id}))_{1 \leq j \leq 3} \stackrel{d}{=} (T_{N,1}^{(j)}(\sigma_1))_{1 \leq j \leq 3}.$$



For  $k = 2$ , we have for  $\sigma_2 = \sigma_1$ ,

$$\begin{aligned} & \left( \begin{array}{c} |e_{1,1}(A_1) + e_{2,1}(A_1) - e_{1,1}(A_2) - e_{2,1}(A_2)| \\ |e_{1,1}(A_3) + e_{2,1}(A_3) - e_{1,1}(A_2) - e_{2,1}(A_2)| \\ |e_{1,1}(A_1) + e_{2,1}(A_1) - e_{1,1}(A_3) - e_{2,1}(A_3)| \\ |e_{1,1}(A_1) + e_{2,1}(A_1) - e_{1,1}(A_2) - e_{2,1}(A_2) + e_{1,2}(A_1) + e_{2,2}(A_1) - e_{1,2}(A_2) - e_{2,2}(A_2)| \\ |e_{1,1}(A_3) + e_{2,1}(A_3) - e_{1,1}(A_2) - e_{2,1}(A_2) + e_{1,2}(A_3) + e_{2,2}(A_3) - e_{1,2}(A_2) - e_{2,2}(A_2)| \\ |e_{1,1}(A_1) + e_{2,1}(A_1) - e_{1,1}(A_3) - e_{2,1}(A_3) + e_{1,2}(A_1) + e_{2,2}(A_1) - e_{1,2}(A_3) - e_{2,2}(A_3)| \end{array} \right) \\ & \stackrel{d}{=} \left( \begin{array}{c} |e_{1,1}(A_1) + e_{2,1}(A_2) - e_{1,1}(A_1) - e_{2,1}(A_2)| \\ |e_{1,1}(A_3) + e_{2,1}(A_2) - e_{1,1}(A_3) - e_{2,1}(A_2)| \\ |e_{1,1}(A_1) + e_{2,1}(A_3) - e_{1,1}(A_1) - e_{2,1}(A_3)| \\ |e_{1,1}(A_1) + e_{2,1}(A_2) - e_{1,1}(A_1) - e_{2,1}(A_2) + e_{1,2}(A_1) + e_{2,2}(A_2) - e_{1,2}(A_1) - e_{2,2}(A_2)| \\ |e_{1,1}(A_3) + e_{2,1}(A_2) - e_{1,1}(A_3) - e_{2,1}(A_2) + e_{1,2}(A_3) + e_{2,2}(A_2) - e_{1,2}(A_3) - e_{2,2}(A_2)| \\ |e_{1,1}(A_1) + e_{2,1}(A_3) - e_{1,1}(A_1) - e_{2,1}(A_3) + e_{1,2}(A_1) + e_{2,2}(A_3) - e_{1,2}(A_1) - e_{2,2}(A_3)| \end{array} \right) \end{aligned}$$

and then, we get jointly

$$(T_{N,k}^{(j)}(\text{id}))_{1 \leq j \leq 3, k \leq 2} \stackrel{d}{=} (T_{N,k}^{(j)}(\sigma_1 \cdot \sigma_2))_{1 \leq j \leq 3, k \leq 2}.$$

This reasoning can be generalized to general  $N$ ,  $J$  and  $K$ :

$$(T_{N,k}^{(a_1, a_2)}(\text{id}))_{k \leq K, a_1 \in C(i), a_2 \in C(i)} \stackrel{d}{=} (T_{N,k}^{(a_1, a_2)}(\sigma_{1:k}))_{k \leq K, a_1 \in C(i), a_2 \in C(i)}.$$

Then, use that by construction, the different connected component  $C(i)$  are independent of one another and hence,

$$(T_{N,k}^{(c_i)}(\text{id}))_{k \leq K, c_i \in \mathbf{I}} \stackrel{d}{=} (T_{N,k}^{(c_i)}(\sigma_{1:k}))_{k \leq K, c_i \in \mathbf{I}}.$$

The result follows from taking the maximum on all the comparisons, and because the boundaries do not depend on the permutation.

## D.2 Proof of Lemma 3

Denote by  $\mathbf{C}_k$  the (random) value of  $\mathbf{C}$  at the beginning of interim  $k$ . We have,

$$\begin{aligned} \text{FWE} &= \mathbb{P}(\exists j \in \mathbf{I} : H_j \text{ is rejected}) \\ &= \mathbb{P}\left(\exists k \leq K : \bar{T}_{N,k}^{(\mathbf{C}_k)}(\text{id}) > B_{N,k}^{(\mathbf{C}_k)}, \arg \max_{j \in \mathbf{C}_k} \bar{T}_{N,k}^{(j)}(\text{id}) \in \mathbf{I}\right). \end{aligned} \quad (5)$$

Then, let  $k_0$  correspond to the very first rejection (if any) in the algorithm. Having that the argmax is attained in  $\mathbf{I}$ ,

$$\bar{T}_{N,k_0}^{(\mathbf{C}_{k_0})}(\text{id}) = \max\{\bar{T}_{N,k_0}^{(j)}(\text{id}), j \in \mathbf{C}_{k_0}\} = \max\{\bar{T}_{N,k_0}^{(j)}(\text{id}), j \in \mathbf{I}\} = \bar{T}_{N,k_0}^{(\mathbf{I})}(\text{id})$$

Moreover, having  $\mathbf{C}_{k_0} \supset \mathbf{I}$ , we have  $B_{N,k_0}^{(\mathbf{C}_{k_0})} \geq B_{N,k_0}^{(\mathbf{I})}$ . Injecting these two relations in Equation (5), we obtain

$$\begin{aligned} \text{FWE} &\leq \mathbb{P}\left(\exists k \leq K : \bar{T}_{N,k}^{(\mathbf{I})}(\text{id}) > B_{N,k}^{(\mathbf{I})}, \arg \max_{j \in \mathbf{C}_k} \bar{T}_{N,k}^{(j)}(\text{id}) \in \mathbf{I}\right) \\ &\leq \mathbb{P}\left(\exists k \leq K : \bar{T}_{N,k}^{(\mathbf{I})}(\text{id}) > B_{N,k}^{(\mathbf{I})}\right). \end{aligned}$$

This proves the desired result.

## E Asymptotic results for two agents

### E.1 Convergence of boundaries and comparing the means

Because there are only two agents and no early stopping, we simplify the notations and denote

$$t_{N,i}(\sigma_i) = \sum_{n=1}^N e_{\sigma_i(n),i}(2) - \sum_{n=N+1}^{2N} e_{\sigma_i(n),i}(1)$$

and

$$\begin{aligned} T_{N,k}(\sigma_{1:k}) &= \left| \sum_{i=1}^k \left( \sum_{n=1}^N e_{\sigma_i(n),i}(2) - \sum_{n=N+1}^{2N} e_{\sigma_i(n),i}(1) \right) \right| \\ &= \left| \sum_{i=1}^k t_{N,i}(\sigma_i) \right| \end{aligned}$$

and

$$B_{N,k} = \inf \left\{ b > 0 : \frac{1}{((2N)!)^k} \sum_{\sigma_1, \dots, \sigma_k \in \mathfrak{S}_{2N}^k} \mathbb{1}\{T_{N,k}(\sigma_{1:k}) \geq b\} \leq q_k \right\}$$

When there is only one interim ( $K = 1$ ), we have the following convergence of the randomization law of  $T_{N,1}(\sigma)$ .

**Proposition 1.** *Suppose  $e_{1,1}(1), \dots, e_{N,1}(1)$  are i.i.d from  $P$  and  $e_{1,1}(2), \dots, e_{N,1}(2)$  are i.i.d from  $Q$  and both  $P$  and  $Q$  has finite variance. Then, we have*

$$\sup_t \left| \frac{1}{(2N)!} \sum_{\sigma \in \mathfrak{S}_{2N}} \mathbb{1}\left\{ \frac{1}{\sqrt{N}} T_{N,1}(\sigma) \leq t \right\} - \Phi(t/\tau(P, Q)) \right| \xrightarrow[N \rightarrow \infty]{P} 0$$

where  $\Phi$  is the standard normal c.d.f. and  $\tau(P, Q)^2 = \sigma_P^2 + \sigma_Q^2 + \frac{(\mu_P - \mu_Q)^2}{2}$ .

**Theorem 2.** *We have that for any  $1 \leq k \leq K$ ,  $\frac{1}{\sqrt{N}} B_{N,k} \xrightarrow[N \rightarrow \infty]{} b_k$  where the real numbers  $b_k$  are defined as follows. Let  $W_1, \dots, W_K$  be i.i.d random variable with law  $\mathcal{N}(0, 1)$ , then  $b_1$  is the solution of the following equation:*

$$\mathbb{P}\left(|W_1| \geq \frac{b_1}{\tau(P, Q)}\right) = \frac{\alpha}{K},$$

and for any  $1 < k \leq K$ ,  $b_k$  is the solution of

$$\mathbb{P}\left(\left|\frac{1}{k} \sum_{j=1}^k W_j\right| > \frac{b_l}{\tau(P, Q)}, \quad \forall j < k, \left|\frac{1}{j} \sum_{i=1}^j W_i\right| \leq \frac{b_j}{\tau(P, Q)}\right) = \frac{\alpha}{K}.$$

Remark that the test we do corresponds to testing

$$\mathbb{1}\{\exists k \leq K : \frac{1}{\sqrt{N}} T_{N,k}(\text{id}) > \frac{1}{\sqrt{N}} B_{N,k}\}$$

and from Theorem 2 and central-limit theorem  $\frac{1}{\sqrt{N}}T_{N,k}(\text{id})$  converges to  $\sum_{j=1}^k W_j \sqrt{\sigma_P^2 + \sigma_Q^2}$  and  $B_{N,k}/\sqrt{N}$  converges to  $b_k$ , hence the test is asymptotically equivalent to

$$\mathbb{1} \left\{ \exists k \leq K : \sum_{j=1}^k W_j \sqrt{\sigma_P^2 + \sigma_Q^2} > b_k \right\}.$$

Then, in the case in which  $\mu_P = \mu_Q$ , we have  $\tau(P, Q) = \sqrt{\sigma_P^2 + \sigma_Q^2}$  and

$$\begin{aligned} \text{FWE} &= \mathbb{P} \left( \exists k \leq K : \sum_{j=1}^k W_j \sqrt{\sigma_P^2 + \sigma_Q^2} > b_k \right) \\ &= \sum_{k=1}^K \mathbb{P} \left( \left| \frac{1}{k} \sum_{j=1}^k W_j \right| > \frac{b_k}{\tau(P, Q)}, \quad \forall j < k, \left| \frac{1}{j} \sum_{i=1}^j W_i \right| \leq \frac{b_j}{\tau(P, Q)} \right) \\ &= \sum_{k=1}^K \frac{\alpha}{K} = \alpha. \end{aligned}$$

Hence, for the test  $H_0 : \mu_P = \mu_Q$  versus  $H_1 : \mu_P \neq \mu_Q$ , our test is asymptotically of level  $\alpha$ .

## E.2 Proof of Theorem 2

We denote for  $x \in \mathbb{R}$ ,

$$R_{N,k}(x) = \frac{1}{(2N)!} \sum_{\sigma_k \in \mathfrak{S}_{2N}} \mathbb{1}\{t_{N,k}(\sigma_k) \leq x\}.$$

$R_{N,k}$  is the c.d.f of the randomization law of  $t_{N,k}(\sigma_k)$ , and by Proposition 1, it converges uniformly to a Gaussian c.d.f when  $N$  goes to infinity.

### Convergence of $B_{N,1}$

$$\frac{1}{\sqrt{N}}B_{N,1} = \frac{1}{\sqrt{N}} \min \left\{ b > 0 : \frac{1}{(2N)!} \sum_{\sigma_1 \in \mathfrak{S}_{2N}} \mathbb{1}\{|T_{N,1}(\sigma_1)| > b\} \leq \frac{\alpha}{K} \right\}$$

This implies

$$\begin{aligned} \frac{1}{(2N)!} \sum_{\sigma_1 \in \mathfrak{S}_{2N}} \mathbb{1}\{|T_{N,1}(\sigma_1)| \leq B_{N,1}\} &= \widehat{R}_{N,1} \left( \frac{1}{\sqrt{N}}B_{N,1} \right) - \widehat{R}_{N,1} \left( -\frac{1}{\sqrt{N}}B_{N,1} \right) \\ &\geq 1 - \frac{\alpha}{K} \end{aligned}$$

and for any  $b < B_{N,1}$ , we have

$$\frac{1}{(2N)!} \sum_{\sigma_1 \in \mathfrak{S}_{2N}} \mathbb{1}\{|T_{N,1}(\sigma_1)| \leq b\} = \widehat{R}_{N,1} \left( \frac{b}{\sqrt{N}} \right) - \widehat{R}_{N,1} \left( -\frac{b}{\sqrt{N}} \right) < 1 - \frac{\alpha}{K}$$

Then,

$$\begin{aligned}
& \Phi\left(\frac{B_{N,1}}{\tau(P,Q)\sqrt{N}}\right) - \Phi\left(-\frac{B_{N,1}}{\tau(P,Q)\sqrt{N}}\right) \\
& \geq \widehat{R}_{N,1}\left(\frac{B_{N,1}}{\sqrt{N}}\right) - \widehat{R}_{N,1}\left(-\frac{B_{N,1}}{\sqrt{N}}\right) - \left|\Phi\left(\frac{B_{N,1}}{\tau(P,Q)\sqrt{N}}\right) - \widehat{R}_{N,1}\left(\frac{B_{N,1}}{\sqrt{N}}\right)\right| \\
& \quad - \left|\Phi\left(-\frac{B_{N,1}}{\tau(P,Q)\sqrt{N}}\right) - \widehat{R}_{N,1}\left(-\frac{B_{N,1}}{\sqrt{N}}\right)\right| \\
& \geq 1 - \frac{\alpha}{K} - 2 \sup_t \left|\Phi\left(\frac{t}{\tau(P,Q)}\right) - \widehat{R}_{N,1}(t)\right|
\end{aligned}$$

Hence, by taking  $N$  to infinity, we have from Proposition 1,

$$\liminf_{N \rightarrow \infty} \Phi\left(\frac{B_{N,1}}{\tau(P,Q)\sqrt{N}}\right) - \Phi\left(-\frac{B_{N,1}}{\tau(P,Q)\sqrt{N}}\right) \geq 1 - \frac{\alpha}{K}.$$

and for any  $\varepsilon > 0$ , because of the definition of  $B_{N,1}$  as a supremum, we have

$$\limsup_{N \rightarrow \infty} \Phi\left(\frac{B_{N,1} + \varepsilon}{\tau(P,Q)\sqrt{N}}\right) - \Phi\left(-\frac{B_{N,1} + \varepsilon}{\tau(P,Q)\sqrt{N}}\right) < 1 - \frac{\alpha}{K}.$$

By continuity of  $\Phi$ , this implies that  $\frac{1}{\sqrt{N}}B_{N,1}$  converges almost surely and its limit is such that

$$\Phi\left(\frac{\lim_{N \rightarrow \infty} B_{N,1}/\sqrt{N}}{\tau(P,Q)}\right) - \Phi\left(-\frac{\lim_{N \rightarrow \infty} B_{N,1}/\sqrt{N}}{\tau(P,Q)}\right) = 1 - \frac{\alpha}{K}.$$

Or said differently, let  $W \sim \mathcal{N}(0, 1)$ , then we have the almost sure convergence  $\lim_{N \rightarrow \infty} \frac{1}{\sqrt{N}}B_{N,1} = b_1$  where  $b_1$  is the real number defined by

$$\mathbb{P}\left(|W| \geq \frac{b_1}{\tau(P,Q)}\right) = \frac{\alpha}{K}.$$

**Convergence of  $B_{N,k}$  for  $k > 1$ .** We proceed by induction. Suppose that  $\frac{1}{\sqrt{N}}B_{N,k-1}$  converges to some  $b_{k-1} > 0$  and that for any  $d_1, \dots, d_{k-1}$ , the randomization probability

$$\begin{aligned}
& \sup_{d_1, \dots, d_{k-1}} \left| \frac{1}{((2N)!)^{k-1}} \sum_{\sigma_1, \dots, \sigma_{k-1} \in \mathfrak{S}_{2N}} \mathbb{1}\left\{\forall j \leq k-1, \sum_{i=1}^j t_{N,i}(\sigma_i) \leq d_j \sqrt{N}\right\} \right. \\
& \quad \left. - \mathbb{P}\left(\forall j \leq k-1, \sum_{i=1}^j W_i \leq \frac{d_j}{\tau(P,Q)}\right) \right| \xrightarrow[a.s.]{N \rightarrow \infty} 0, \quad (6)
\end{aligned}$$

where  $W_1, \dots, W_{k-1}$  are i.i.d  $\mathcal{N}(0, 1)$  random variables. In other words, the randomization law converges uniformly to the joint law described above with the sum of Gaussian random variables.

Then, by uniform convergence and by convergence of the  $B_{N,j}$ , we have

$$\frac{1}{((2N)!)^{k-1}} \sum_{\sigma_1, \dots, \sigma_{k-1} \in \mathfrak{S}_{2N}} \mathbb{1}\{T_{N,j}(\sigma_{1:j}) > B_{N,k-1}, \quad \forall j < k-1, T_{N,j}(\sigma_{1:j}) \leq B_{N,j}\}$$

converges to

$$\mathbb{P} \left( \left| \sum_{i=1}^l W_i \right| > \frac{b_l}{\tau(P, Q)}, \quad \forall j < l, \left| \sum_{i=1}^j W_i \right| \leq \frac{b_j}{\tau(P, Q)} \right). \quad (7)$$

which is equal to  $\frac{\alpha}{K}$  by construction of  $B_{N,j}$  for  $j < k$ ,

We have

$$B_{N,k} = \min \left\{ b > 0 : \frac{1}{((2N)!)^k} \sum_{\sigma_1, \dots, \sigma_k \in \mathfrak{S}_{2N}} \mathbb{1} \left\{ \begin{array}{l} |\sum_{j=0}^k t_{N,j}(\sigma_j)| \geq b, \\ \forall j < k, |\sum_{i=0}^j t_{N,i}(\sigma_i)| \leq B_{N,j} \end{array} \right\} + \sum_{i=1}^{k-1} q_i \leq \frac{k\alpha}{K} \right\}.$$

By the induction hypothesis, we have  $q_i \xrightarrow[n \rightarrow \infty]{} \alpha/K$  for any  $i < k$ .

Let  $W_1, \dots, W_k$  be i.i.d  $\mathcal{N}(0, 1)$  random variables. We show the following lemma that prove part of the step  $k$  of the induction hypothesis, and proved in Section E.3.

**Lemma 4.** *Suppose Equation (7) is true. Then,*

$$\begin{aligned} \sup_{d_1, \dots, d_k} \left| \frac{1}{((2N)!)^k} \sum_{\sigma_1, \dots, \sigma_k \in \mathfrak{S}_{2N}} \mathbb{1} \left\{ \forall j \leq k, \sum_{i=1}^j t_{N,i}(\sigma_i) \leq d_j \sqrt{N} \right\} \right. \\ \left. - \mathbb{P} \left( \forall j \leq k, \sum_{i=1}^j W_i \leq \frac{d_j}{\tau(P, Q)} \right) \right| \xrightarrow[a.s.]{N \rightarrow \infty} 0, \end{aligned}$$

Then, what remains is to prove the convergence of  $B_{N,k}$ . Denote

$$\Psi_k(d_k) = \mathbb{P} \left( \left| \sum_{i=1}^k W_i \right| > \frac{d_k}{\tau(P, Q)}, \forall j \leq k-1, \left| \sum_{i=1}^j W_i \right| \leq \frac{b_j}{\tau(P, Q)} \right),$$

we have, from Lemma 4, that

$$\left| \Psi_k \left( \frac{B_{N,k}}{\sqrt{N}} \right) - \frac{1}{((2N)!)^k} \sum_{\sigma_1, \dots, \sigma_k \in \mathfrak{S}_{2N}} \mathbb{1} \{ T_{N,k}(\sigma_{1:k}) > B_{N,k}, \quad \forall j < k, T_{N,j}(\sigma_{1:j}) \leq B_{N,j} \} \right|$$

converges to 0 as  $N$  goes to infinity. Hence,

$$\limsup_{N \rightarrow \infty} \Psi_k \left( \frac{B_{N,k}}{\sqrt{N}} \right) \leq \alpha/K.$$

Then, similarly to the case  $k = 1$ , we also have for any  $\varepsilon > 0$ ,

$$\liminf_{N \rightarrow \infty} \Psi_k \left( \frac{B_{N,k} - \varepsilon}{\sqrt{N}} \right) \geq \alpha/K$$

and by continuity of  $\Psi_k$  (which is a consequence of the continuity of the joint c.d.f. of Gaussian random variables) we conclude that  $B_{N,k}/\sqrt{N}$  converges almost surely to  $b_k$ .

### E.3 Proof of Lemma 4

In this proof, we denote by  $E_{\sigma_{1:k}}(x)$  the expectation of the randomization law defined for some function  $f : \mathfrak{S}_{2N}^k \rightarrow \mathbb{R}$  by

$$E_{\sigma_{1:k}}[f(\sigma_{1:k})] = \frac{1}{((2N)!)^k} \sum_{\sigma_1, \dots, \sigma_k \in \mathfrak{S}_{2N}} f(\sigma_{1:k}).$$

Remark that this is still random and should be differentiated from the usual expectation  $\mathbb{E}$ .

First, let us first handle the convergence of step  $k$ . We have,

$$\begin{aligned} & \frac{1}{(2N)!} \sum_{\sigma_k \in \mathfrak{S}_{2N}} \mathbb{1} \left\{ \sum_{j=1}^k t_{N,j}(\sigma_j) \leq d_k \sqrt{N} \right\} \\ &= \frac{1}{(2N)!} \sum_{\sigma_k \in \mathfrak{S}_{2N}} \mathbb{1} \left\{ \frac{1}{\sqrt{N}} t_{N,k}(\sigma_k) \leq d_k - \frac{1}{\sqrt{N}} \sum_{j=1}^{k-1} t_{N,j}(\sigma_j) \right\} \\ &= \widehat{R}_{n,k} \left( d_k - \frac{1}{\sqrt{N}} \sum_{j=1}^{k-1} t_{N,j}(\sigma_j) \right) \end{aligned}$$

We have, because the convergence in Proposition 1 is uniform,

$$\begin{aligned} & \left| \widehat{R}_{n,k} \left( d_k - \frac{1}{\sqrt{N}} \sum_{j=1}^{k-1} t_{N,j}(\sigma_j) \right) - \Phi \left( \frac{1}{\tau(P,Q)} \left( d_k - \frac{1}{\sqrt{N}} \sum_{j=1}^{k-1} t_{N,j}(\sigma_j) \right) \right) \right| \\ & \leq \sup_t \left| \widehat{R}_n(t) - \Phi \left( \frac{t}{\tau(P,Q)} \right) \right| \xrightarrow{n \rightarrow \infty} 0 \end{aligned}$$

Then, using this convergence we have that

$$E_{\sigma_{1:k}} \left[ \mathbb{1} \left\{ \forall j < k, \sum_{i=1}^j t_{N,i}(\sigma_i) \leq d_j \sqrt{N} \right\} \right]$$

converges uniformly on  $d_1, \dots, d_k$  when  $N$  goes to infinity to

$$\begin{aligned} & E_{\sigma_{1:k}} \left[ \mathbb{1} \left\{ \forall j < k-1, \sum_{i=1}^j t_{N,i}(\sigma_i) \leq d_j \sqrt{N} \right\} \mathbb{P} \left( W_k \leq \frac{1}{\tau(P,Q)} \left( d_k - \frac{1}{\sqrt{N}} \sum_{i=1}^{k-1} t_{N,i}(\sigma_i) \right) \right) \right] \\ &= \mathbb{E} \left[ E_{\sigma_{1:k-1}} \left[ \mathbb{1} \left\{ \frac{\forall j < k-2, \sum_{i=1}^j t_{N,i}(\sigma_i) \leq d_j \sqrt{N},}{\frac{1}{\sqrt{N}} \sum_{i=1}^{k-1} t_{N,i}(\sigma_i) \leq \min(d_k - \tau(P,Q)W_k, d_{k-1})} \right\} \right] \right] \end{aligned}$$

Then, using the induction hypothesis, this converges to Equation (6),

$$\begin{aligned} \mathbb{E} \left[ \mathbb{1} \left\{ \frac{\forall j < k-2, \sum_{i=1}^j W_i \leq \frac{d_j}{\tau(P,Q)},}{\frac{1}{\sqrt{N}} \sum_{i=1}^{k-1} W_i \leq \frac{1}{\tau(P,Q)} \min(d_k - W_k, d_{k-1})} \right\} \right] &= \mathbb{E} \left[ \mathbb{1} \left\{ \forall j < k, \sum_{i=1}^j W_i \leq \frac{d_j}{\tau(P,Q)} \right\} \right] \\ &= \mathbb{P} \left( \forall j \leq k, \sum_{i=1}^j W_i \leq \frac{d_j}{\tau(P,Q)} \right). \end{aligned}$$

## F Understanding AdaStop through simplified algorithms – 2 agents, non sequential

### F.1 Comparing two agents

In this section, we present the simpler case of two agents, we call them  $A_1$  and  $A_2$ . We denote by  $\mathfrak{S}_{2N}$  the set of permutations of  $\{1, \dots, 2N\}$  and for  $\sigma_1, \sigma_2, \dots, \sigma_k \in \mathfrak{S}_{2N}$ , we denote  $\sigma_{1:k} = \sigma_1 \cdot \sigma_2 \cdot \dots \cdot \sigma_k$  the concatenation of the permutation  $\sigma_1$  done in interim 1 with  $\sigma_2$  done on interim 2,  $\dots$ , and  $\sigma_k$  on interim  $k$ . At interim  $i$ , we denote the concatenation of the  $2N$  evaluations obtained from the two agents with  $e_{1,k}, \dots, e_{2N,k}$ . Then, we indicate with  $e_{\sigma_i(n),i}$  the permutation of the  $n$ -th evaluation using permutation  $\sigma_i$  for interim  $i$ .

In the case where only two agents are compared, we use the following algorithm (see Section 4 for the multi-agent and fully developed version of the algorithm). We denote

$$T_{N,k}(\sigma_{1:k}) = \left| \sum_{i=1}^k \left( \sum_{n=1}^N e_{\sigma_i(n),i} - \sum_{n=N+1}^{2N} e_{\sigma_i(n),i} \right) \right|,$$

and the boundary

$$B_{N,k} \in \inf \left\{ b > 0 : \frac{1}{((2N)!)^k} \sum_{\sigma_{1:k} \in S_k} \mathbb{1}\{T_{N,k}(\sigma_{1:k}) \geq b\} \leq \frac{\alpha}{K} \right\}, \quad (8)$$

where  $S_k$  is the set of permutations  $\sigma_{1:k} \in (\mathfrak{S}_{2N})^k$  such that it would not have rejected before

$$\forall m < k, \quad T_{N,m}(\sigma_{1:k}) \leq B_{N,m}.$$

The algorithm is summarized in Algorithm

---

**Algorithm 2:** Adaptive stopping to compare two agents.

---

**Parameters:** Agents  $A_1, A_2$ , environment  $\mathcal{E}$ , number of blocks  $K \in \mathbb{N}^*$ , size of a block  $N$ , level of the test  $\alpha \in (0, 1)$ .

- 1 Define  $2NK$  different seeds  $s_{1,1}, \dots, s_{1,N}, s_{2,1}, \dots, s_{2,N}$ .
- 2 **for**  $k = 1, \dots, K$  **do**
- 3     **for**  $i = 1, 2$  **do**
- 4         Train agent  $A_i$  on environment  $\mathcal{E}$  with the seeds  $s_{i,kN}, \dots, s_{i,(k+1)N}$ .
- 5         Collect evaluations  $e_{1,k}(A_i), \dots, e_{N,k}(A_i)$  using this trained agent.
- 6     **end**
- 7     Compute the boundary  $B_{N,k}$  from Equation (8).
- 8     **if**  $T_{N,k}(\text{id}) \geq B_{N,k}$  **then**
- 9         Reject the equality of the agents' evaluation, break the loop.
- 10    **end**
- 11    **else**
- 12         If  $k = K$  then accept, otherwise continue.
- 13    **end**
- 14 **end**
- 15 If the test was never rejected, return accept. Else return reject.

---

An illustration of the group sequential test is given in Fig. 3. The boundary in blue is computed sequentially to have a final level  $1 - \alpha$  for the test, the red points are the observed

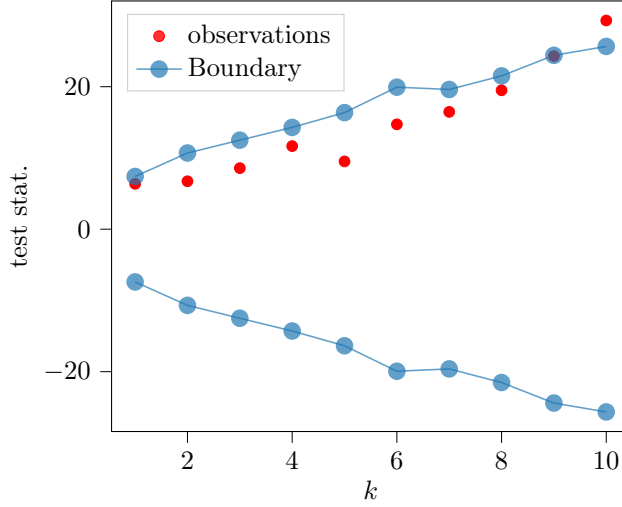


Figure 3: Illustration of the boundary for two agents.

values of the test statistic (denoted  $w_i$ ). The algorithm stops at the third iteration  $k = 10$  because the observed value of  $w_i$  is outside the boundary, which was computed using Equation (8).

## F.2 Step-down procedure

Proposed by [27], the step-down procedure is defined as follows: let  $\mathfrak{S}_{2N}$  be the set of all the permutations of  $\{1, \dots, 2N\}$ , for a permutation  $\sigma \in \mathfrak{S}_{2N}$  we define the concatenation  $(e_n(j))_{1 \leq n \leq 2N}$  of the random variables being compared in hypothesis  $j$ , and the permuted test statistics of hypothesis  $j$  is

$$T_N^{(j)}(\sigma) = \left| \sum_{n=1}^N e_{\sigma(n)}(j) - \sum_{n=N+1}^{2N} e_{\sigma(n)}(j) \right|.$$

This test statistics is extended to any subset of hypothesis  $\mathbf{C} \subset \{1, \dots, J\}$ , as follows

$$\bar{T}_N^{(\mathbf{C})}(\sigma) = \max_{j \in \mathbf{C}} T_N^{(j)}(\sigma). \quad (9)$$

To specify the test, one compares  $\bar{T}_N^{(\mathbf{C})}(\text{id})$  to some threshold value  $B_N^{(\mathbf{C})}$ , that is: accept all hypotheses in  $\mathbf{C}$  if  $\bar{T}_N^{(\mathbf{C})}(\text{id}) \leq B_N^{(\mathbf{C})}$ . The threshold of the test  $B_N^{(\mathbf{C})}$  is defined as the quantile of order  $1 - \alpha$  of the permutation law of  $\bar{T}_N^{(\mathbf{C})}(\sigma)$ :

$$B_N^{(\mathbf{C})} = \inf \left\{ b > 0 : \left( \frac{1}{(2N)!} \sum_{\sigma \in \mathfrak{S}_{2N}} \mathbb{1}\{\bar{T}_N^{(\mathbf{C})}(\sigma) \geq b\} \right) \leq \alpha \right\}. \quad (10)$$

In other words,  $B_N^{(\mathbf{C})}$  is the real number such that an  $\alpha$  proportion of the values of  $\bar{T}_N^{(\mathbf{C})}(\sigma)$  exceeds it, when  $\sigma$  enumerates all the permutations of  $\{1, \dots, 2N\}$ .

The permutation test is summarized in Algorithm 3. It is initialized with all the hypotheses to test in  $\mathbf{C} = \mathbf{C}_0$ . Then, it enters a loop where it decides to reject or not the most extreme



---

**Algorithm 3:** Multiple testing by step-down permutation test.

---

**Parameters:**  $\alpha \in (0, 1)$   
**Input:**  $e_n(j)$  for  $1 \leq n \leq 2N$  and  $j \in \mathbf{C}_0 = \{1, \dots, J\}$ .

- 1 Initialize  $\mathbf{C} \leftarrow \mathbf{C}_0$ .
- 2 **while**  $\mathbf{C} \neq \emptyset$  **do**
- 3     Compute  $T_N^{(\mathbf{C})}(\sigma)$  for every  $j$  and every  $\sigma$  using Equation (9).
- 4     Compute  $B_n^{(\mathbf{C})}$  using Equation (10).
- 5     **if**  $\bar{T}_N^{(\mathbf{C})}(\text{id}) \leq B_n^{(\mathbf{C})}$  **then**
- 6         Accept all the hypotheses  $H_j, j \in \mathbf{C}$  and break the loop.
- 7     **else**
- 8         Reject  $H_{j_{\max}}$  where  $j_{\max} = \arg \max_{j \in \mathbf{C}} T_N^{(j)}(\text{id})$ .
- 9         Define  $\mathbf{C} = \mathbf{C} \setminus \{j_{\max}\}$
- 10    **end**
- 11 **end**

---

hypothesis in  $\mathbf{C}$ , the set of not yet discarded, nor accepted hypotheses. If the test statistic  $T_N^{(j)}(\text{id})$ , for the most extreme hypothesis in  $\mathbf{C}$  (i.e.  $\bar{T}_N^{(\mathbf{C})}(\text{id})$ ), does not exceed the given threshold  $B_n^{(\mathbf{C})}$ , then it accepts all the hypotheses in  $\mathbf{C}$  and breaks the loop. Otherwise, it just rejects the most extreme hypothesis and it discards that from the set  $\mathbf{C}$ . Then, it enters the loop again until the set of remaining hypotheses is empty.

The maximum of the statistics in Equation (9) for  $\sigma = \text{id}$  allows to test an intersection of hypotheses, while, the threshold  $B_n^{(\mathbf{C})}$ , because of the equality of distribution hypotheses, allows to have strong control on the FWE (i.e.  $\text{FWE} \leq \alpha$ ). In fact, this procedure is not specific to permutation tests, and it can be used for other tests provided some properties on the thresholds  $B_n^{(\mathbf{C})}$ .

**remark 1** (Non-independent hypothesis). *The acute reader may have noticed that as the hypotheses are not assumed to be independent, we can not resort to Benjamini-Hochberg or similar procedure [3] here. We adapt this procedure to the case of group sequential testing later in Section 4*

## G On early accept in AdaStop

In this section, we present in details the early-accept heuristic proposed to speed up computation of AdaStop. Let  $\mathbf{C} \subset \{1, \dots, J\}$  be a subset of the set of comparisons that we want to do, denote

$$\bar{T}_{N,k}^{(\mathbf{C})}(\sigma_1^k) = \max \left( T_{N,k}^{(j)}(\sigma_1^k), \quad j \in \mathbf{C} \right) \quad \text{and} \quad \underline{T}_{N,k}^{(\mathbf{C})}(\sigma_1^k) = \min \left( T_{N,k}^{(j)}(\sigma_1^k), \quad j \in \mathbf{C} \right)$$

$$\bar{B}_{N,k}^{(\mathbf{C})} = \inf \left\{ b > 0 : \frac{1}{m_k} \sum_{\sigma \in \hat{S}_k} \mathbb{1} \{ \bar{T}_{N,k}^{(\mathbf{C})}(\sigma_1^k) \geq b \} \leq \bar{q}_k \right\} \quad (11)$$

and

$$\underline{B}_{N,k}^{(\mathbf{C})} = \sup \left\{ b > 0 : \frac{1}{m_k} \sum_{\sigma \in \hat{S}_k} \mathbb{1} \{ \underline{T}_{N,k}^{(\mathbf{C})}(\sigma_1^k) \leq b \} \leq \underline{q}_k \right\}. \quad (12)$$

where  $\sum_{j=1}^k q_j \leq \frac{k\alpha}{K}$  and  $\sum_{j=1}^k \bar{q}_j \leq \frac{k\beta}{K}$  and where  $\widehat{S}_k$  is the subset of  $S_k$  such that it would not have accepted or rejected before: for each  $\sigma_1^k \in \widehat{S}_k$ , we have the following property

$$\forall m < k, \quad \bar{T}_{N,m}^{(\mathbf{C})}(\sigma_1^k) \leq \bar{B}_{N,m}^{(\mathbf{C})} \quad \text{and} \quad \underline{T}_{N,m}^{(\mathbf{C})}(\sigma_1^k) \geq \underline{B}_{N,m}^{(\mathbf{C})}.$$

In AdaStop, modify the decision step (line 10 to 15 in Algorithm 1) to The resulting algorithm

---

**Algorithm 4:** Early accept

---

```

1 if  $\bar{T}_{N,k}^{(\mathbf{C})}(\text{id}) > \bar{B}_{N,k}^{(\mathbf{C})}$  then
2   | Reject  $H_{j_{\max}}$  where  $j_{\max} = \arg \max (T_{N,k}^{(j)}(\text{id}), j \in \mathbf{C})$ .
3   | Update  $\mathbf{C} = \mathbf{C} \setminus \{j_{\max}\}$ 
4 else if  $\underline{T}_{N,k}^{(\mathbf{C})}(\text{id}) < \underline{B}_{N,k}^{(\mathbf{C})}$  then
5   | Accept  $H_{j_{\min}}$  where  $j_{\min} = \arg \min (T_{N,k}^{(j)}(\text{id}), j \in \mathbf{C})$ .
6   | Update  $\mathbf{C} = \mathbf{C} \setminus \{j_{\min}\}$ 

```

---

have a small probability to accept a decision early, and as a consequence it may be unnecessary to compute some of the agent in the subsequent steps.

As illustration of the performance of early accept, if one was to execute AdaStop with early parameter  $\beta = 0.01$  for the Walked2D-v3 experiment from Section 6.3, the experiment would stop at interim 2 and 10 seeds would have been used for each agent. By comparison, in Section 6.3 we showed that without early accept, Adastop uses 30 seeds for DDPG and TRPO. Early stopping give in this instance a consequent speed-up without affecting the final decisions.

## H Implementation details and additional plots

### H.1 Plot of the census on the number of seeds in ICML 2022 RL articles

In Fig 4, we present the results of the census we did on the number of seeds used in the RL articles from ICML 2022. We plot only the articles having experiment on environments using Mujoco as this represent the majority of the articles.

### H.2 The distribution of evaluation performances in Deep RL problems

In Fig. 5, we represent the densities of the evaluations (cumulative rewards) of some RL agents on the Hopper environment (see Section 6.3 for the details on the experiment). The p-values for the Shapiro normality test on these data are: 0.0032 for PPO<sup>5</sup>, 0.0003 for SAC, 0.0393 for DDPG and 0.015 for TRPO. As all p-values are less than  $\alpha = 0.05$ , we reject the null hypothesis of normality for at least one of them. This confirms what our eyes already told us: the performance of Deep-RL agents is not normally distributed (at least on this example).

### H.3 Complementary experiment for Section 6.1

In this third example, we suppose we have 10 agents whose performance distributions are listed in Fig. 6, where the first column indicates the labels of the agents as they are shown in Fig. 7.

<sup>5</sup>Here, PPO, SAC, DDPG, and TRPO should be read as “an agent that implements xxx”.

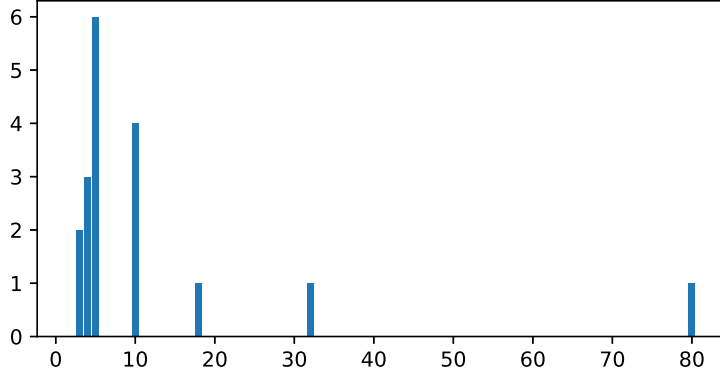


Figure 4: Census of the number of seeds used in RL articles published in ICML 2022 proceedings to study environments using Mujoco.

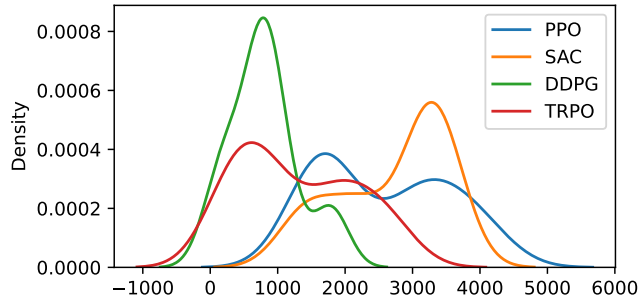


Figure 5: Empirical density of the performances of various agents on Hopper Mujoco environment using 15 seeds for each agent.

Similarly to Cases 1 and 2 (see Section 6.1), we execute AdaStop with  $K = 5$ ,  $N = 5$ ,  $\alpha = 0.05$  and the maximum number of permutations  $B = 10\,000$ . In contrast to Cases 1 and 2, in Case 3 we use early accept (with  $\beta = 0.01$ ) to avoid situations when all agents are run with all  $NK$  seeds, which may occur when each agent has a similar distribution to at least one another agent in comparison.

We show the performance of AdaStop for multiple agents' comparison in Fig. 7, which corresponds to the output of one execution of AdaStop (with labels summarized in Fig. 6). The table (left) summarizes the decisions of the algorithm for every pair of comparisons, and violin plots (right) reflect empirically measured distributions in the comparison. From this figure, we can see that almost all agents are grouped in clusters of distributions with equal means, except for \*MG3 that is assigned to two different groups at the same time. Interestingly, these clusters except for \*MG3 are correctly formed. Moreover, similarly to two previous cases, we have executed AdaStop  $M = 5\,000$  times to measure FWE of the test. The empirical measurements are 0.0178 of rejection rate of at least one correct hypothesis when comparing distributions and 0.0472 of rejection rate when comparing means, both are below 0.05. Thus, AdaStop can be efficiently

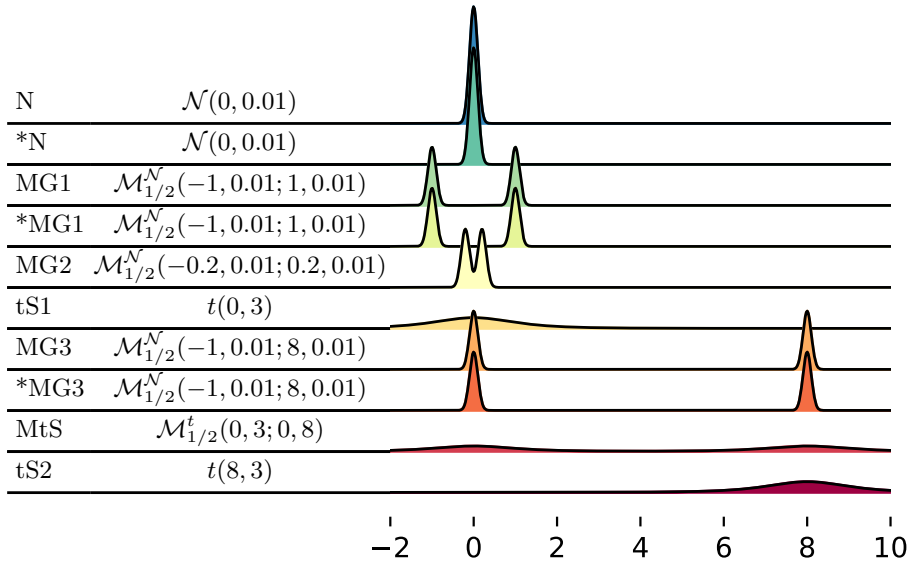


Figure 6: Toy example 3, with an illustration of the involved distributions.

used to compare performances of several agents simultaneously.

#### H.4 Additional plot for Section 6.2

#### H.5 MuJoCo Experiments

In this section, we go into details about the experimental setup of the MuJoCo experiments, as well as present additional plots.

**Hyperparameters.** Table 3 details the hyperparameters used with each Deep RL on the MuJoCo benchmark. For all agents, we use a budget of one million time steps for HalfCheetah-v3, Hopper-v3, and Walker2d-v3, and a budget of two million time steps for Ant-v3 and Humanoid-v3. Finally, we use a maximum horizon of one thousand steps for all environments.

**Evaluation.** Agents are evaluated by stopping the training procedure on predetermined time steps and averaging the results of 50 evaluation episodes.

**Learning Curves.** Fig. 10 presents sample efficiency curves for all algorithms in each environment. The shaded areas represent 95% bootstrapped confidence intervals, computed using `rliable` [1]. Note that each curve may be an aggregation of a different number of runs, which can be found in the bottom right of Fig. 9.

**Additional Comparison Plots.** Fig. 9 expands upon the comparisons given in the main text (in Fig. 2) by also plotting the evaluation distributions of each agent using boxplots.

|                   | DDPG               | TRPO               | PPO                | SAC                |
|-------------------|--------------------|--------------------|--------------------|--------------------|
| $\gamma$          | 0.99               | 0.99               | 0.99               | 0.99               |
| Learning Rate     | $1 \times 10^{-3}$ | $1 \times 10^{-3}$ | $3 \times 10^{-4}$ | $3 \times 10^{-4}$ |
| Batch Size        | 128                | 64                 | 64                 | 256                |
| Buffer Size       | $10^6$             | 1024               | 2048               | $10^6$             |
| Value Loss        | MSE                | MSE                | AVEC [12]          | MSE                |
| Use gSDE          | No                 | No                 | No                 | Yes                |
| Entropy Coef.     | -                  | 0                  | 0                  | auto               |
| GAE $\lambda$     | -                  | 0.95               | 0.95               | -                  |
| Advantage Norm.   | -                  | Yes                | Yes                | -                  |
| Target Smoothing  | 0.005              | -                  | -                  | 0.005              |
| Learning Starts   | $10^4$             | -                  | -                  | $10^4$             |
| Policy Frequency  | 32                 | -                  | -                  | -                  |
| Exploration Noise | 0.1                | -                  | -                  | -                  |
| Noise Clip        | 0.5                | -                  | -                  | -                  |
| Max KL            | -                  | $10^{-2}$          | -                  | -                  |
| Line Search Steps | -                  | 10                 | -                  | -                  |
| CG Steps          | -                  | 100                | -                  | -                  |
| CG Damping        | -                  | $10^{-2}$          | -                  | -                  |
| CG Tolerance      | -                  | $10^{-10}$         | -                  | -                  |
| LR Schedule       | -                  | -                  | Linear to 0        | -                  |
| Clip $\epsilon$   | -                  | -                  | 0.2                | -                  |
| PPO Epochs        | -                  | -                  | 10                 | -                  |
| Value Coef.       | -                  | -                  | 0.5                | -                  |
| Train Freq.       | -                  | -                  | -                  | 1 step             |
| Gradient Steps    | -                  | -                  | -                  | 1                  |

Table 3: Hyperparameters used for the MuJoCo experiments.

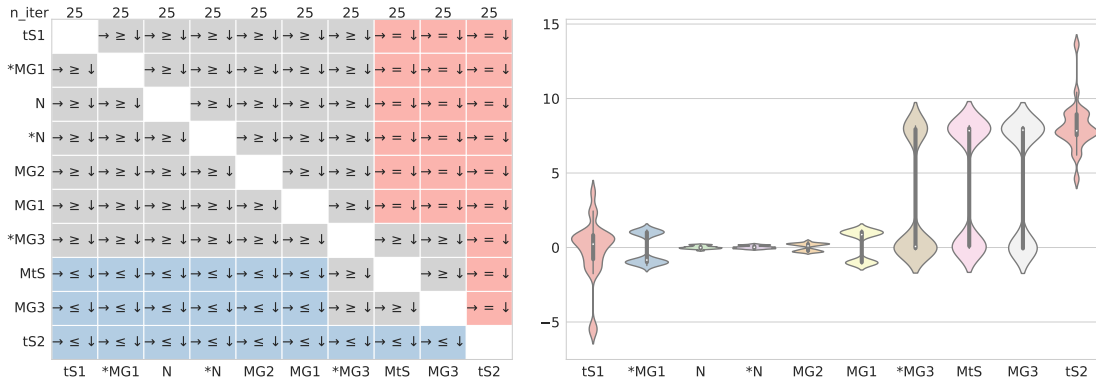


Figure 7: Case 3. AdaStop decision table (left) and measured empirical distributions (right).

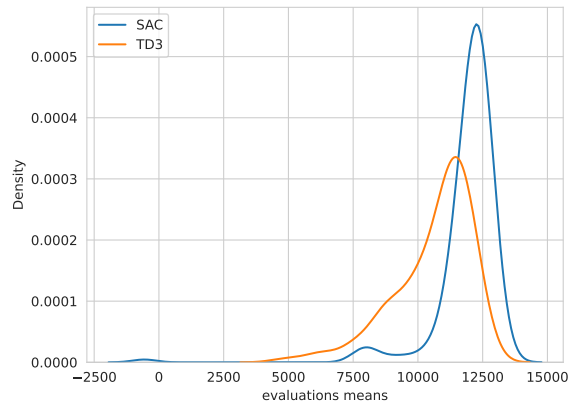


Figure 8: Evaluations distributions for a SAC and a TD3 agents on HalfCheetah obtained from 192 independent seeds of 2 million steps.

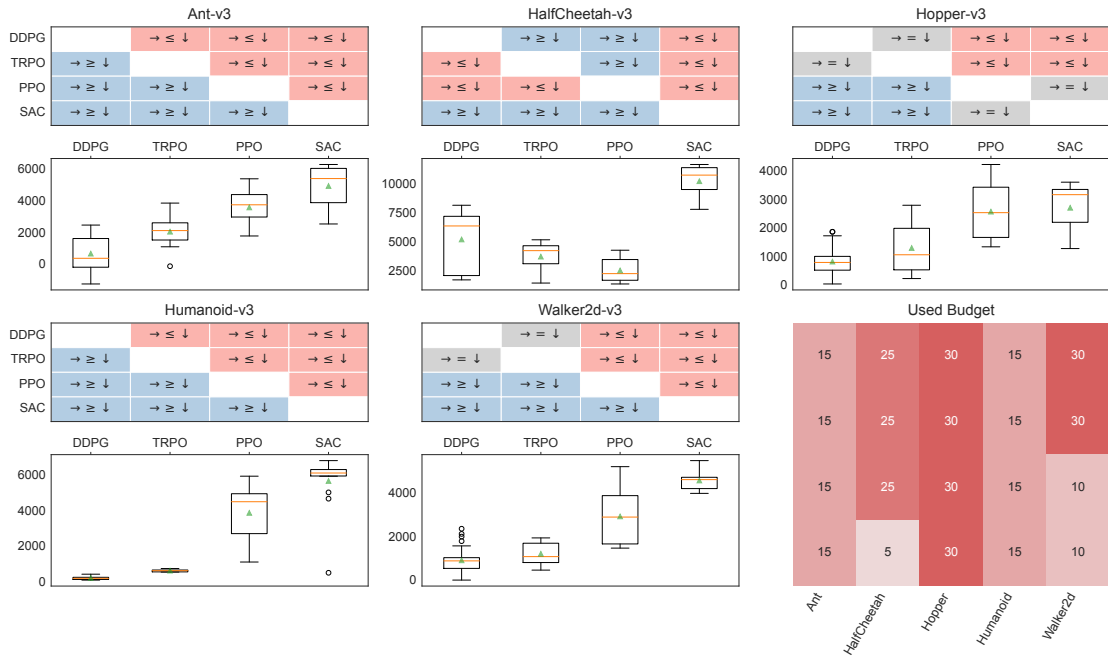


Figure 9: AdaStop decision tables (top) and evaluation distributions (bottom) for each MuJoCo environment, and the budget used to make these decisions (bottom right). The medians are represented as the green triangles and the means as the horizontal orange lines.

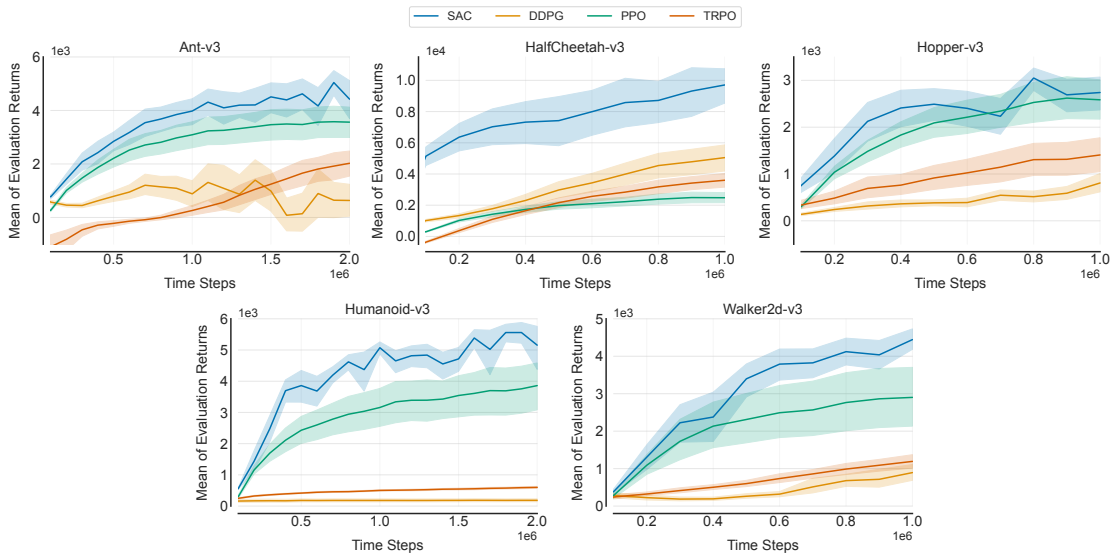


Figure 10: Mean of Evaluation Returns with 95% stratified bootstrap CIs. Note that curves in the same figure may use a different number of random seeds, depending on when AdaStop made the decisions.

## Contents

|          |  |           |
|----------|--|-----------|
| <b>1</b> | <b>Introduction</b>  | <b>3</b>  |
| <b>2</b> | <b>Problem setting</b>   | <b>4</b>  |
| 2.1      | Goal and requirements for AdaStop . . . . .  | 5         |
| 2.2      | Survey of current evaluation workflows in RL . . . . .                                   | 5         |
| <b>3</b> | <b>Background material on hypothesis testing</b>   | <b>6</b>  |
| 3.1      | Group sequential testing . . . . .   | 6         |
| 3.2      | Permutation tests . . . . .  | 6         |
| 3.3      | Multiple hypothesis testing . . . . .  | 7         |
| <b>4</b> | <b>Adaptive stopping for non-parametric group-sequential multiple hypothesis testing</b> | <b>7</b>  |
| <b>5</b> | <b>Theoretical guarantees</b>  | <b>9</b>  |
| 5.1      | Control on the Family-wise Error . . . . .   | 9         |
| 5.2      | Heuristic for early accept for even faster decisions . . . . .                           | 10        |
| <b>6</b> | <b>Experimental study</b>  | <b>10</b> |
| 6.1      | Toy examples . . . . .   | 10        |
| 6.2      | Comparison with non-adaptive approach . . . . .  | 11        |
| 6.3      | AdaStop for Deep Reinforcement Learning . . . . .  | 12        |
| <b>7</b> | <b>Conclusion and future works</b>   | <b>14</b> |
| <b>8</b> | <b>Ethical statement</b>   | <b>14</b> |
| <b>A</b> | <b>Index of notations</b>  | <b>17</b> |
| <b>B</b> | <b>Recap on hypothesis testing</b>   | <b>17</b> |
| B.1      | Type I and type II error . . . . .   | 18        |
| B.2      | Multiple tests and FWE . . . . .   | 18        |
| <b>C</b> | <b>Proof of Theorem 1</b>  | <b>19</b> |
| C.1      | Simplified proof for $L = 2$ agents, and $K = 1$ . . . . .                               | 19        |
| C.2      | Proof of Theorem 1 . . . . .   | 20        |
| <b>D</b> | <b>Proof of Lemmas</b>   | <b>21</b> |
| D.1      | Proof of Lemma 2 . . . . .   | 21        |
| D.2      | Proof of Lemma 3 . . . . .   | 22        |
| <b>E</b> | <b>Asymptotic results for two agents</b>   | <b>23</b> |
| E.1      | Convergence of boundaries and comparing the means . . . . .                              | 23        |
| E.2      | Proof of Theorem 2 . . . . .   | 24        |
| E.3      | Proof of Lemma 4 . . . . .   | 27        |



---

|          |   |           |
|----------|---|-----------|
| <b>F</b> | <b>Understanding AdaStop through simplified algorithms – 2 agents, non sequential</b> | <b>28</b> |
| F.1      | Comparing two agents . . . . .  | 28        |
| F.2      | Step-down procedure . . . . .   | 29        |
| <b>G</b> | <b>On early accept in AdaStop</b>   | <b>30</b> |
| <b>H</b> | <b>Implementation details and additional plots</b>                                    | <b>31</b> |
| H.1      | Plot of the census on the number of seeds in ICML 2022 RL articles . . . . .          | 31        |
| H.2      | The distribution of evaluation performances in Deep RL problems . . . . .             | 31        |
| H.3      | Complementary experiment for Section 6.1 . . . . .                                    | 31        |
| H.4      | Additional plot for Section 6.2 . . . . .   | 33        |
| H.5      | MuJoCo Experiments . . . . .  | 33        |



*Inria*

**RESEARCH CENTRE  
LILLE – NORD EUROPE**

Parc scientifique de la Haute-Borne  
40 avenue Halley - Bât A - Park Plaza  
59650 Villeneuve d'Ascq

Publisher  
Inria  
Domaine de Voluceau - Rocquencourt  
BP 105 - 78153 Le Chesnay Cedex  
[inria.fr](http://inria.fr)

ISSN 0249-6399