



**HAL**  
open science

## Automatic detection of perfusion abnormalities based on an Arterial Spin Labeling template

Camille Maumet, Pierre Maurel, Jean-Christophe Ferré, Christian Barillot

### ► To cite this version:

Camille Maumet, Pierre Maurel, Jean-Christophe Ferré, Christian Barillot. Automatic detection of perfusion abnormalities based on an Arterial Spin Labeling template. ISMRM Scientific Workshop: Perfusion MRI 2012, Oct 2012, Amsterdam, Netherlands. , 2012. hal-04091251

**HAL Id: hal-04091251**

**<https://inria.hal.science/hal-04091251v1>**

Submitted on 7 May 2023

**HAL** is a multi-disciplinary open access archive for the deposit and dissemination of scientific research documents, whether they are published or not. The documents may come from teaching and research institutions in France or abroad, or from public or private research centers.

L'archive ouverte pluridisciplinaire **HAL**, est destinée au dépôt et à la diffusion de documents scientifiques de niveau recherche, publiés ou non, émanant des établissements d'enseignement et de recherche français ou étrangers, des laboratoires publics ou privés.



Distributed under a Creative Commons Attribution 4.0 International License

# Automatic detection of perfusion abnormalities based on an Arterial Spin Labeling template

ISMRM Scientific Workshop: Perfusion MRI 2012

Camille Maumet, Pierre Maurel, Jean-Christophe Ferré,  
Christian Barillot

October 13th, 2012

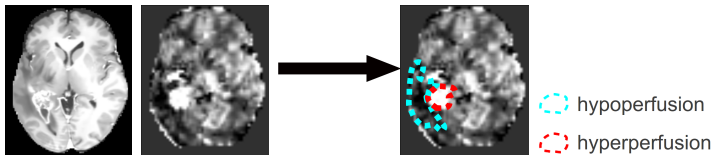


- 1 Context
- 2 Method
- 3 Results

- 1 Context
- 2 Method
- 3 Results

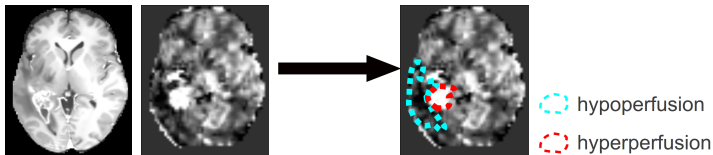
## Objective

**Quantitative** *identification of voxelwise patient-specific perfusion abnormalities.*



## Objective

**Quantitative** *identification of voxelwise patient-specific perfusion abnormalities.*



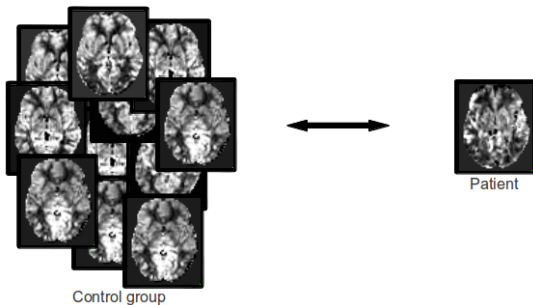
## Challenges:

- Low signal-to-noise ratio of the Q2TIPS PASL sequence.
- Presence of artefacts.

- 1 Context
- 2 Method
  - Statistical analysis
  - Ground Truth estimation
- 3 Results

- 1 Context
- 2 Method
  - Statistical analysis
  - Ground Truth estimation
- 3 Results





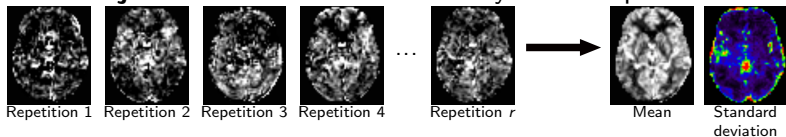
## Method

*Originality of our approach:*

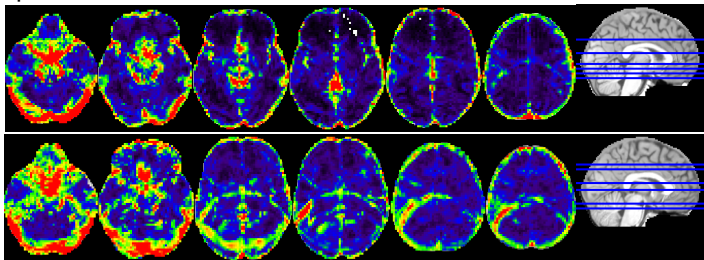
- *Explicit modelling of both **intra-subject** and **inter-subject** variances.*
- ***No pre-smoothing** of the data: a *contrario* approach.*

# Intra-subject variance

**Intra-subject variance** models variability across repetitions

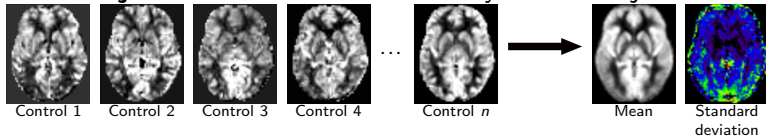


Examples

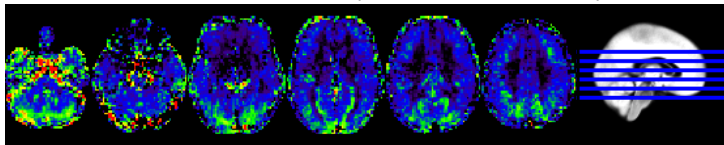


# Inter-subject variance

**Inter-subject** variance models variability across subjects

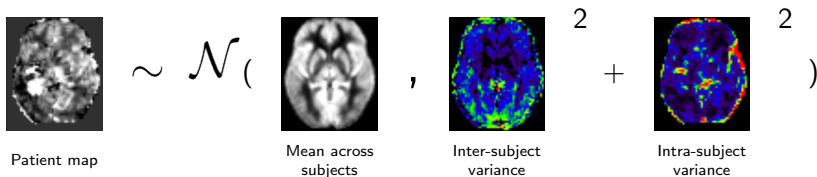


Inter-subject standard deviation (35 healthy subjects)

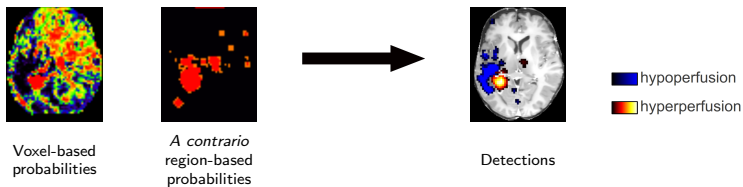


# Detection of perfusion abnormalities

Model of normal perfusion:



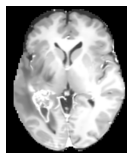
Detection of hypoperfusions and hyperperfusions:



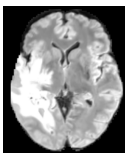
- 1 Context
- 2 Method
  - Statistical analysis
  - Ground Truth estimation
- 3 Results

# Ground Truth estimation

Step 1 – Segmentation of the tumor:



T1 Gadolinium



T2 FLAIR

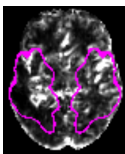


Tumor and  
edema  
segmentation

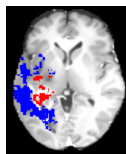
Step 2 – Combination with T2 perfusion information:



Tumor segment.



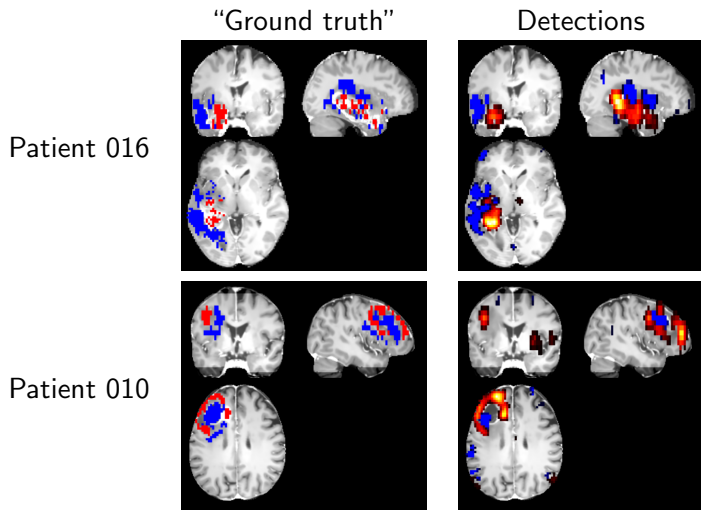
DSC CBF



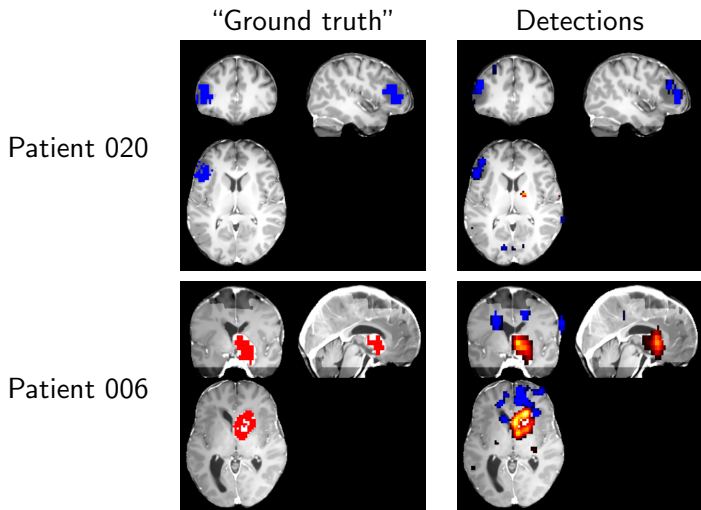
"Ground truth"

Step 3 – Visual assesment and manual corrections by a clinician

- 1 Context
- 2 Method
- 3 Results**







Quantitative results on a dataset including 22 patients and 35 controls:

Specificity (controls)	0.99
Specificity (patients)	0.93
Sensitivity (hyper)	0.82

## Conclusions:

- Importance of intra-subject variance in the detection of patient-specific perfusion abnormalities.
- Good sensitivity and specificity of the proposed approach.

## Future work:

- Relationship between the level of CBF in identified abnormalities and the grade of the tumor.
- Application in other pathological contexts.

More details on the *a contrario* approach: C. Maumet, P. Maurel, J.-C. Ferré, and C. Barillot, "A comprehensive framework for the detection of individual brain perfusion abnormalities using arterial spin labeling" MICCAI 2012, pp. 542–549.

Q & A