



HAL
open science

Controllable Lighting Model for Designing Digital Panorama Maps in the Style of Novat

Nolan Mestres, Romain Vergne, Joëlle Thollot, Arthur Novat

► To cite this version:

Nolan Mestres, Romain Vergne, Joëlle Thollot, Arthur Novat. Controllable Lighting Model for Designing Digital Panorama Maps in the Style of Novat. ICA 12th Mountain Cartography Workshop, Apr 2023, Colorado, United States. hal-04070162

HAL Id: hal-04070162

<https://inria.hal.science/hal-04070162v1>

Submitted on 15 Apr 2023

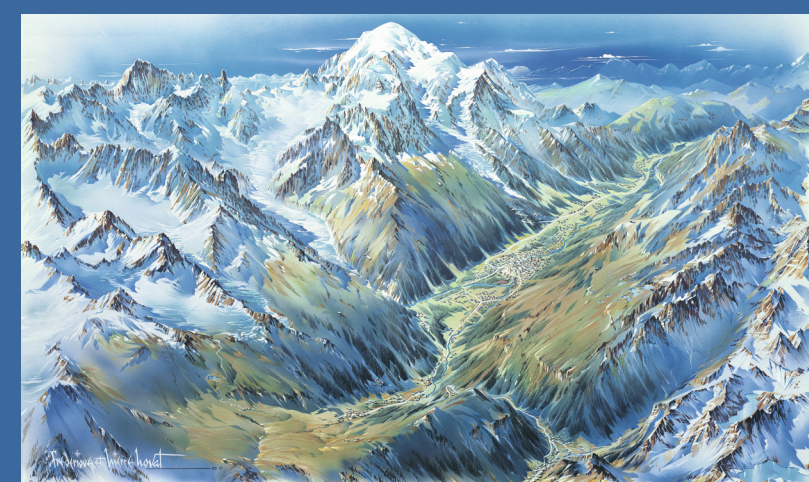
HAL is a multi-disciplinary open access archive for the deposit and dissemination of scientific research documents, whether they are published or not. The documents may come from teaching and research institutions in France or abroad, or from public or private research centers.

L'archive ouverte pluridisciplinaire **HAL**, est destinée au dépôt et à la diffusion de documents scientifiques de niveau recherche, publiés ou non, émanant des établissements d'enseignement et de recherche français ou étrangers, des laboratoires publics ou privés.

Controllable Lighting Model for Designing Digital Panorama Maps in the Style of Novat



Nolan Mestres¹, Romain Vergne¹, Joëlle Thollot¹, Arthur Novat² | ¹Univ. Grenoble Alpes, INRIA, CNRS, Grenoble INP | ²Atelier Novat



Chamonix, Atelier Novat

Analytical Shading

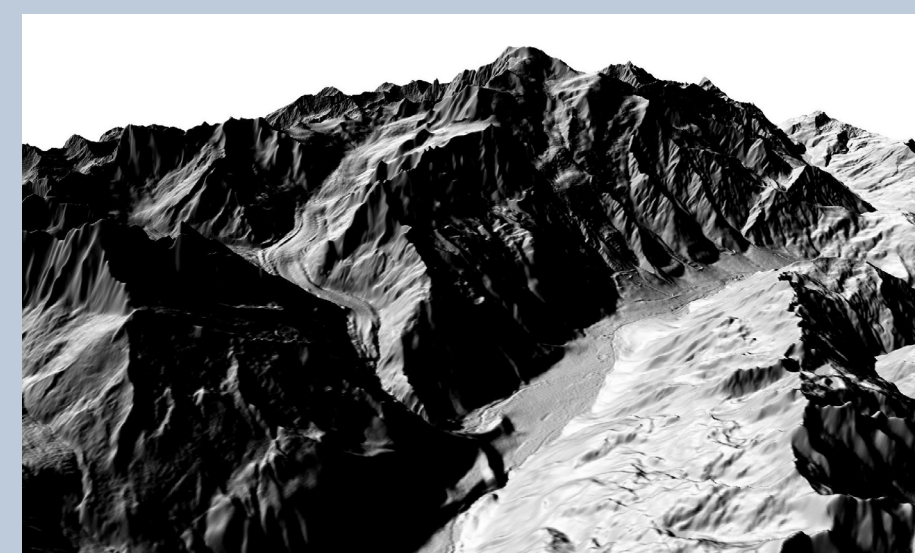
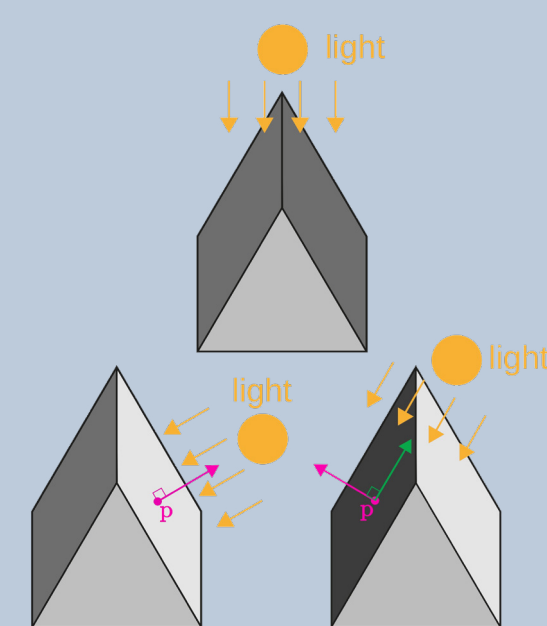
Whatever the shading model (diffuse, aspect based, global illumination,...) having a single light direction results in masking effects and contrast issues.



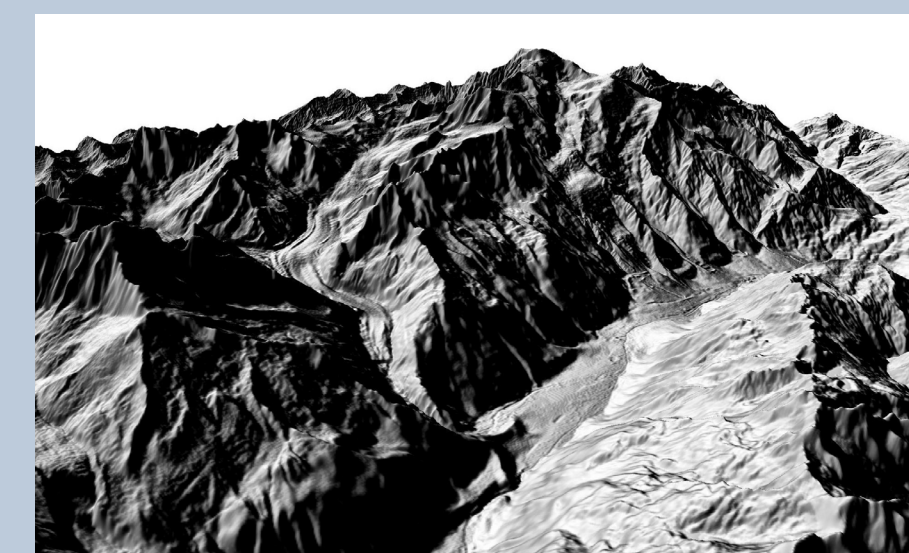
Shading with shadow map and simple color model

Multi-scale Local Light Alignment

For each detail scale, we move the light at each point of the surface to maximize contrast between both sides of features.

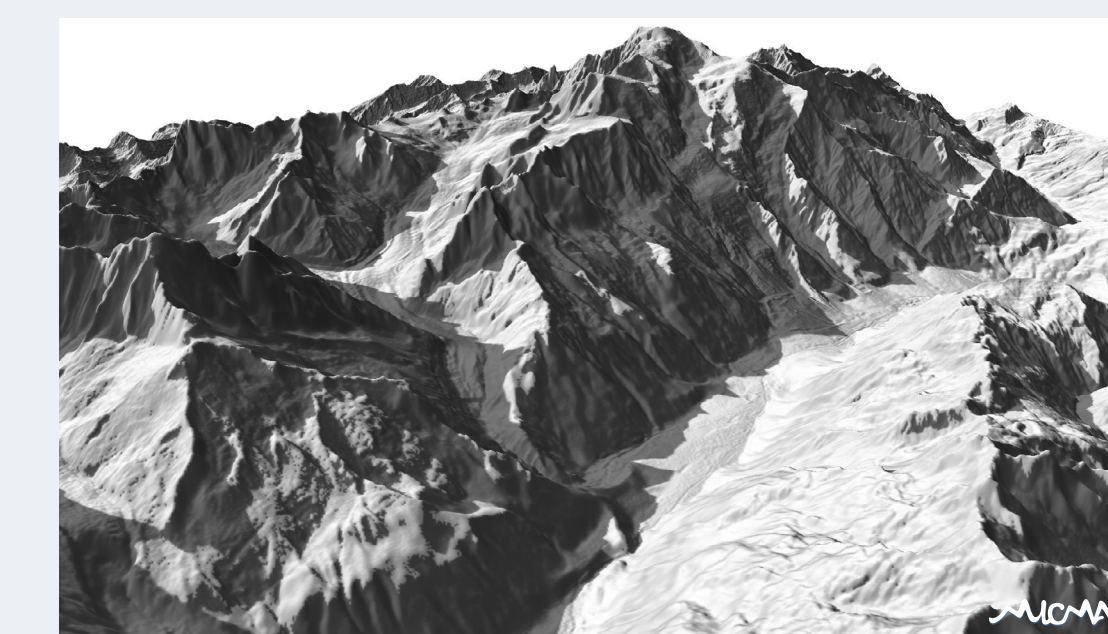


Lambert diffuse rendering



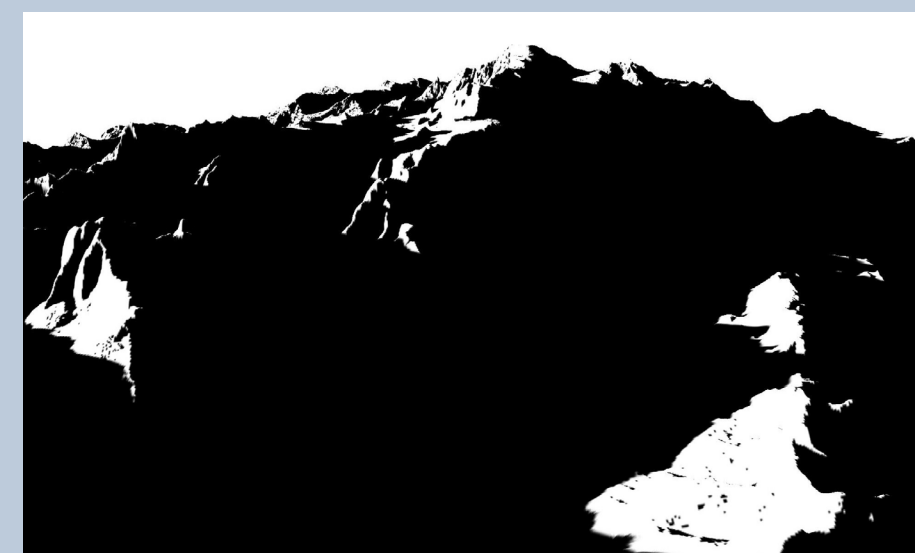
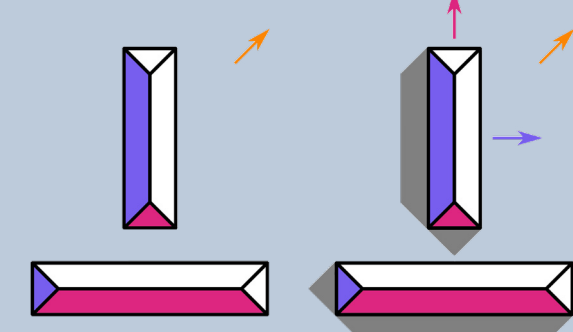
Our result with Local Light Alignment

Combined Result

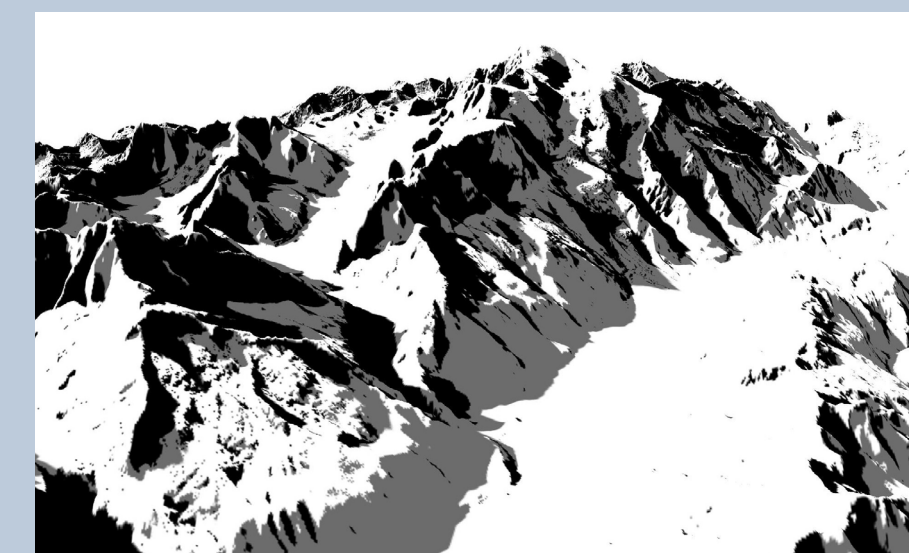


Multi-scale Adjusted Shadows

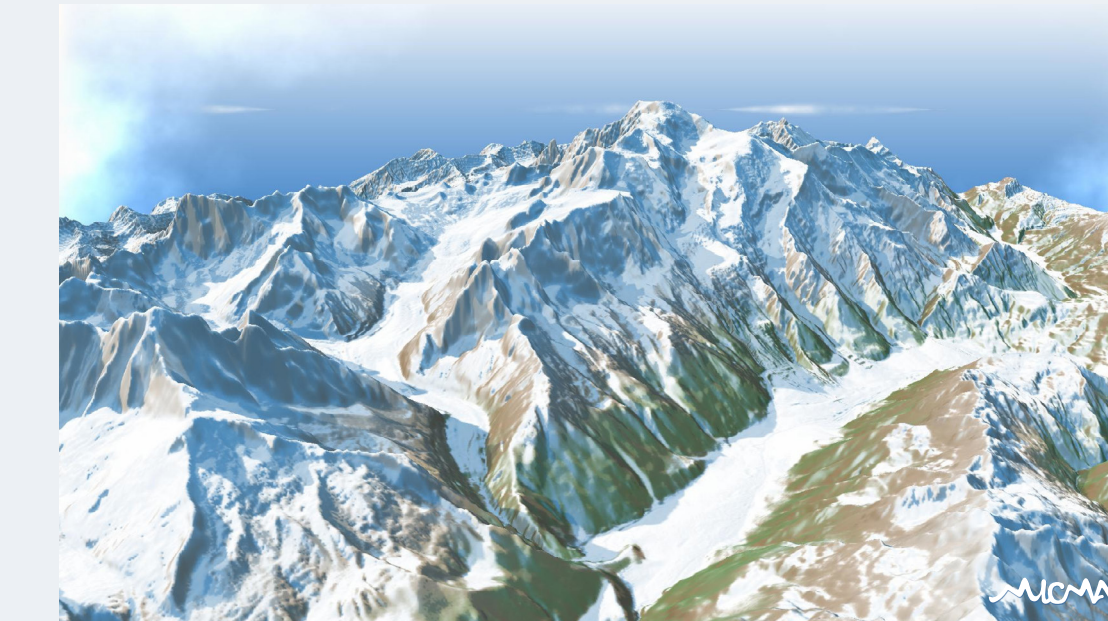
We compute a set of light directions to compute multi-scale shadows. We control their length to solve masking while aligning shadows with the relief.



Shadow map with a single light



Two scales (grey and black) adjusted shadows



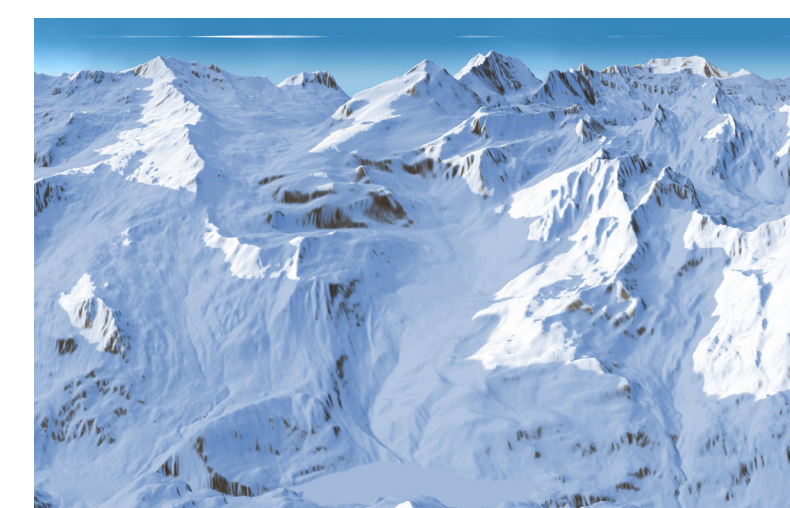
Alpe d'Huez, Atelier Novat



Simple colored shading



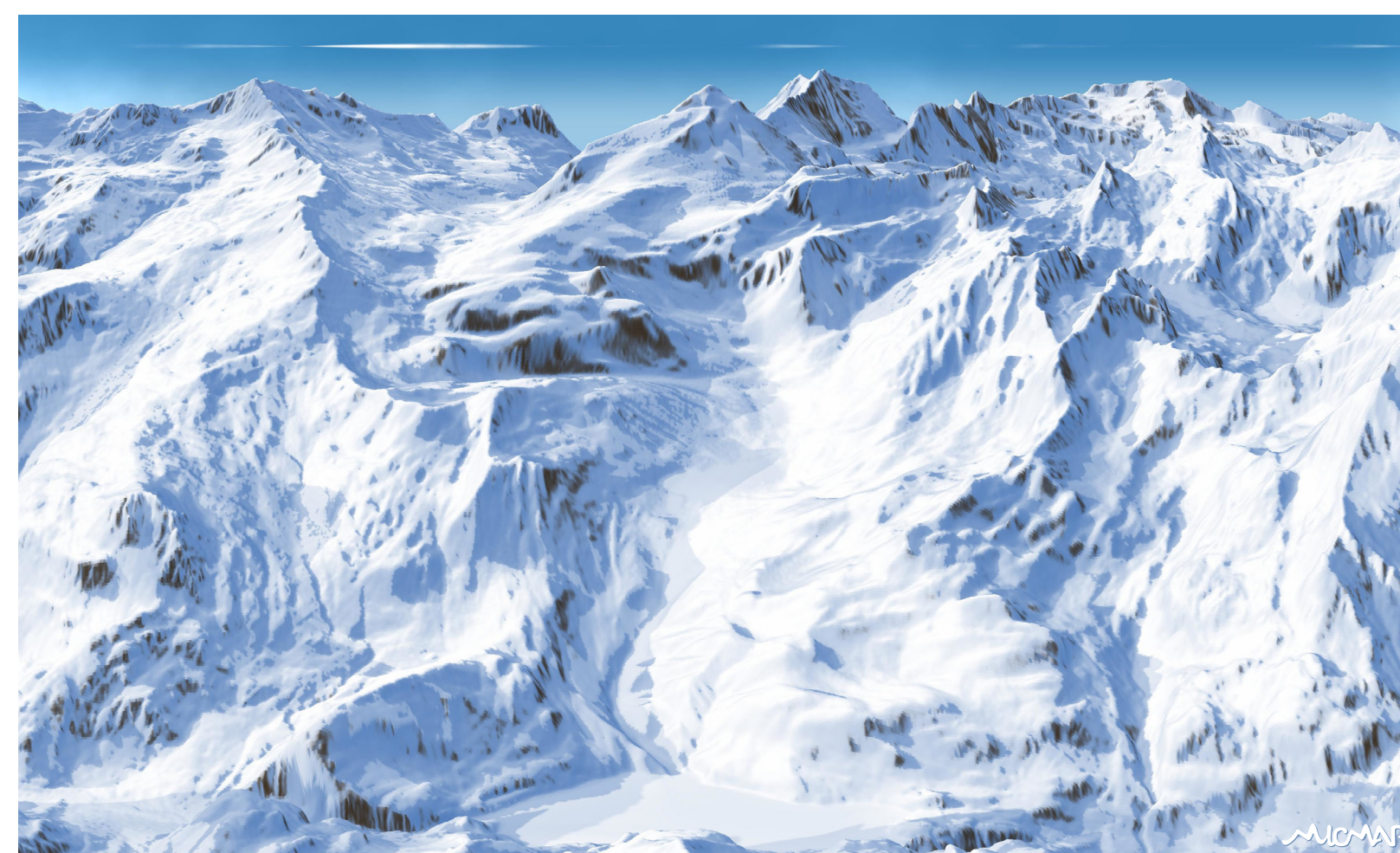
Val d'Isère-Tignes, Atelier Novat



Simple colored shading



Our result



Our result



To be continued...

Cartographic elements:
 ► roads,
 ► trees,
 ► ski tracks...

References

- A Stylistic Study of the Winter Panorama Maps of Pierre Novat
Nolan Mestres
Cartographic Perspectives 2022, 10.14714/CP100.1753
- Local Light Alignment for Multi-Scale Shape Depiction
Nolan Mestres, Romain Vergne, Camille Noûs, Joëlle Thollot
Eurographics 2021, 10.1111/cgf.142656

