



HAL
open science

Overall survival in spinocerebellar ataxia types 1, 2, 3, and 6: a longitudinal cohort study

Alhassane Diallo, Heike Jacobi, Arron Cook, Robyn Labrum, Alexandra Durr, Alexis Brice, Perrine Charles, Cecilia Marelli, Caterina Mariotti, Lorenzo Nanetti, et al.

► To cite this version:

Alhassane Diallo, Heike Jacobi, Arron Cook, Robyn Labrum, Alexandra Durr, et al.. Overall survival in spinocerebellar ataxia types 1, 2, 3, and 6: a longitudinal cohort study. *The Lancet Neurology*, 2018, 17 (4), pp.327-334. 10.1016/S1474-4422(18)30042-5 . hal-03854540

HAL Id: hal-03854540

<https://inria.hal.science/hal-03854540>

Submitted on 16 Nov 2022

HAL is a multi-disciplinary open access archive for the deposit and dissemination of scientific research documents, whether they are published or not. The documents may come from teaching and research institutions in France or abroad, or from public or private research centers.

L'archive ouverte pluridisciplinaire **HAL**, est destinée au dépôt et à la diffusion de documents scientifiques de niveau recherche, publiés ou non, émanant des établissements d'enseignement et de recherche français ou étrangers, des laboratoires publics ou privés.

Overall survival in spinocerebellar ataxia types 1, 2, 3, and 6: a longitudinal cohort study

Alhassane Diallo, MD, Heike Jacobi, MD, Arron Cook, MD, Robyn Labrum, PhD, Prof Alexandra Durr, MD, Prof Alexis Brice, MD, Perrine Charles, MD, Cecilia Marelli, MD, Caterina Mariotti, MD, Lorenzo Nanetti, MD, Marta Panzeri, MD, Maria Rakowicz, PhD, Anna Sobanska, MD, Anna Sulek, PhD, Tanja Schmitz-Hübsch, MD, Ludger Schöls, MD, Holger Hengel, MD, Prof Bela Melegh, PhD, Prof Alessandro Filla, MD, Antonella Antenora, MD, Jon Infante, MD, Prof José Berciano, MD, Bart P. van de Warrenburg, PhD, Dagmar Timmann, MD, Sylvia Boesch, MD, Prof Massimo Pandolfo, MD, Prof Jörg B. Schulz, MD, Peter Bauer, MD, Paola Giunti, PhD, Jun-Suk Kang, MD, Prof Thomas Klockgether, MD, and Sophie Tezenas du Montcel, PhD.

Alhassane Diallo, MD, Sophie Tezenas du Montcel, PhD: Sorbonne Universités, Université Pierre et Marie Curie (UPMC) Univ Paris 06, UMR S 1136, INSERM U 1136, Institut Pierre Louis d'Epidémiologie et de Santé Publique, F-75013, Paris, France

Heike Jacobi, MD, Tanja Schmitz-Hübsch, MD, Prof Thomas Klockgether: Department of Neurology, University Hospital of Heidelberg, Heidelberg, and German Center for Neurodegenerative Diseases (DZNE), Bonn, Germany

Arron Cook, MD, Paola Giunti, PhD: Department of Molecular Neuroscience, UCL, Institute of Neurology, London, United Kingdom

Robyn Labrum, PhD: Neurogenetics Laboratory, National Hospital of Neurology and Neurosurgery, UCLH, London, United Kingdom

Prof Alexandra Durr, MD, Prof Alexis Brice, MD : Sorbonne Universités, UPMC Univ Paris 06, UMRS_1127, INSERM, U 1127, CNRS, UMR 7225, Institut du Cerveau et de la Moelle épinière, ICM, Pitié-Salpêtrière University Hospital Paris, France.

Prof Alexandra Durr, MD, Prof Alexis Brice, MD, Perrine Charles, MD : APHP, Genetics Department, Pitié-Salpêtrière University Hospital Paris, France

Cecilia Marelli, MD : Service de Neurologie – CMRR, CHRU Gui de Chauliac, 80, av. A. Fliche, 34295 - Montpellier CEDEX 05, France

Caterina Mariotti, MD, Lorenzo Nanetti, MD, Marta Panzeri, MD: SOSD Genetics of Neurodegenerative and Metabolic Diseases, Fondazione-IRCCS Istituto Neurologico Carlo Besta, Milan, Italy

Maria Rakowicz, PhD, Anna Sobanska, MD: Department of Clinical Neurophysiology, Institute of Psychiatry and Neurology, Warsaw, Poland

Anna Sulek, PhD: Department of Genetics, Institute of Psychiatry and Neurology, Warsaw, Poland

Tanja Schmitz-Hübsch, MD: Charité-Universitätsmedizin Berlin, NeuroCure Clinical Research Center, Clinical Neuroimmunology Group, Berlin, Germany

Ludger Schöls, MD, Holger Hengel, MD: Department of Neurodegeneration and Hertie-Institute for Clinical Brain Research, University of Tübingen and Deutsches Zentrum für Neurodegenerative Erkrankungen (DZNE), D-72076 Tübingen, Germany

Prof Bela Melegh, PhD: Department of Medical Genetics, and Szentagothai Research Center, University of Pécs, Pécs, Hungary

Prof Alessandro Filla, MD, Antonella Antenora, MD: Department of Neuroscience, and Reproductive and Odontostomatological Sciences, Federico II University Naples, Italy

Jon Infante, MD, Prof José Berciano, MD: Service of Neurology, University Hospital Marqués de Valdecilla (IDIVAL), University of Cantabria (UC) and Centro de Investigación Biomédica en Red de Enfermedades Neurodegenerativas (CIBERNED), Santander, Spain

Bart P. van de Warrenburg, PhD: Department of Neurology, Donders Institute for Brain, Cognition and Behaviour, Radboud University Medical Center, PO Box 9101, 6500 HB Nijmegen, The Netherlands

Dagmar Timmann, MD: Department of Neurology, Essen University Hospital, University of Duisburg-Essen

Sylvia Boesch, MD: Department of Neurology, Medical University, Innsbruck, Innsbruck Austria

Prof Massimo Pandolfo, MD: Université Libre de Bruxelles (ULB), Neurology Service - ULB Hôpital Erasme, ULB Laboratory of Experimental Neurology, Brussels, Belgium

Prof Jörg B. Schulz, MD: Department of Neurology, RWTH Aachen University, Pauwelsstraße 30, 52074 Aachen, Germany and JARA - Translational Brain Medicine, Aachen-Jülich, INM 11, Germany

Peter Bauer, MD: Institute of Medical Genetics and Applied Genomics, University of Tübingen, Tübingen, Germany

Prof Bela Melegh, PhD: Department of Neurology, Zala County Hospital, H-8900 Zalaegerszeg, Zrinyi M. Str. 1, Hungary

Jun-Suk Kang, MD: Department of Neurology, University of Frankfurt, Frankfurt/M, Germany

Prof Thomas Klockgether, Ludger Schöls, MD, Holger Hengel, MD: Department of Neurology, University Hospital of Bonn, Bonn, Germany and German Center for Neurodegenerative Diseases (DZNE), Bonn, Germany

Sophie Tezenas du Montcel, PhD: AP-HP, Biostatistics Unit, Groupe Hospitalier Pitié-Salpêtrière, F-75013, Paris, France

Correspondance to: Dr. Sophie Tezenas du Montcel, Sorbonne Universités, Université Pierre et Marie Curie (UPMC) Univ Paris 06, UMR S 1136, INSERM U 1136, Institut Pierre Louis d'Epidémiologie et de Santé Publique, F-75013, Paris, France and AP-HP, Biostatistics Unit, Groupe Hospitalier Pitié-Salpêtrière, F-75013, Paris, France

sophie.tezenas@aphp.fr

Phone: +33142160582

Keywords: EUROSICA study, spinocerebellar ataxia, survival data, prognosis factors, nomogram.

Summary

Background:

Spinocerebellar ataxias (SCAs) are dominantly inherited progressive ataxia disorders that can lead to premature death. We aimed to study the overall survival of the most common spinocerebellar ataxias: SCA1, SCA2, SCA3, and SCA6. We also aimed to identify the strongest contributing predictors that influence overall survival.

Methods:

In this longitudinal cohort study (EUROSCA), we enrolled men and women, aged 18 years or older, with positive genetic test results for SCA1, SCA2, SCA3, or SCA6 and progressive, otherwise unexplained, ataxias from 17 ataxia referral centers in ten European countries. Survival was defined as the time from enrollment to death for any reason. We used the Cox regression model adjusted for age at baseline to analyze survival. We used prognostic factors with $P < 0.05$ from multivariate model to build nomograms and assessed their performance based on discrimination and calibration. This study is registered with ClinicalTrials.gov, number NCT02440763.

Findings:

Between July 1, 2005, and Aug 31, 2006, 525 patients with SCA1, SCA2, SCA3, or SCA6 were enrolled and followed. The 10-year survival rate was 57% (95 %CI: 47 – 69) for SCA1, 74% (67 – 81) for SCA2, 73% (65 – 82) for SCA3, and 87% (80 – 94) for SCA6. Factors associated with shorter survival were dysphagia (HR: 4.52 [95%CI=1.83 – 11.15]) and a higher value for the scale for the assessment and rating of ataxia (SARA) score (1.26 [1.19 – 1.33]) for SCA1; older age at inclusion (1.04 [1.01 – 1.08]), longer CAG repeat number (1.16 [1.03 – 1.31]), and higher SARA score (1.15 [1.10 – 1.20]) for SCA2; older age at inclusion (1.44 [1.20 – 1.74]), dystonia (2.65 [1.21 – 5.53]), higher SARA score (1.26 [1.17 – 1.35]), and negative interaction between CAG and age at inclusion (0.994 [0.991 – 0.997]) for SCA3; and higher SARA score (1.17 [1.08 – 1.27]) for SCA6. The nomogram-predicted probability of 10-year survival showed good discrimination (*c-index* equal to 0.905 ± 0.027, 0.822 ± 0.032, 0.891 ± 0.021 and 0.825 ± 0.054 for SCA1, 2, 3, and 6, respectively) and excellent calibration: in each genotype, the predicted probability of five- and 10-year survival was very close to the actual observed survival.

Interpretation:

Our study provides quantitative data on the survival of the most common spinocerebellar ataxias based on a follow-up period that exceeds those of the previous studies. These results have substantial implications for the design of future interventional studies of SCA; the prognostic survival nomogram would be useful for patient selection and stratification but need validation in external population.

Funding:

EU FP6 (EUROSCA, grant LSHM-CT-503304), German Ministry of Education and Research (GeneMove), Polish Ministry of Scientific Research and Information Technology, EU FP7 (Neuromics, grant F5-2012-305121), and Fondation pour la Recherche Médicale (FRM, grant number: PLP20151034334).

Panel: Research in context

Evidence before this study

We searched PubMed using the search terms [“spinocerebellar ataxia” OR “dominant ataxia” OR “Machado-Joseph disease” AND “survival”] for reports published before October 31, 2017. Only peer-reviewed, English-language reports of studies performed in patients were considered. Four studies were identified: two were restricted to a single genotype (SCA2 and SCA3), the third focused on index cases with known SCA mutations and affected parents of SCA and analyzed SCAs due to polyglutamine expansion as a group, and the last was an international retrospective study with short follow-up. These studies were very heterogeneous in terms of design, population follow-up, and methods. Few predictors of death were identified: gender, year of birth, age at onset and repeat lengths of the expanded allele.

Added value of this study

In this European, multicenter, longitudinal study (EUROSCA) we prospectively investigated a large cohort of patients with SCA1, SCA2, SCA3, and SCA6 for 10 years. Survival rates differed with respect to genotype. A higher SARA score at baseline was associated with shorter survival for all genotypes. Nomograms constructed from these data allowed precise prediction of survival on an individual basis.

Implications of all available evidence

The available data provide quantitative information on overall survival of patients with SCA1, SCA2, SCA3, and SCA6, and allowed the identification of predictors of survival. The prognostic nomograms will help researchers to optimize the design of future clinical trials and need validation in external population to assist clinicians in counseling patients and their families.

Introduction

Spinocerebellar ataxias (SCAs) are a clinically and genetically heterogeneous group of dominantly inherited autosomal progressive ataxia disorders. Several genetically distinct SCAs have been defined, the most common being SCA1, SCA2, SCA3, and SCA6. They are caused by translated CAG repeat expansions that code for elongated polyglutamine tracts within the various proteins associated with each type. In addition, there are SCAs caused by non-translated repeat expansions or conventional mutations. Clinically, they are characterized by progressive balance problems and incoordination, with onset most commonly during adulthood, that lead to severe disability and premature death.¹

Although life expectancy of SCA patients with these subtypes is substantially reduced, there are only a few studies that have estimated survival or identified factors that influence survival. Significantly decreased survival associated with CAG repeat number, age at onset, and year of birth was observed for Brazilian SCA3 patients.² Similar findings were obtained for Cuban SCA2 patients, except for the effect of year of birth on survival.³ A recent study of 446 index cases with known SCA mutations and 509 affected relatives reported a lower age of death in patients with polyglutamine expansion than in those with other types of mutations.⁴ In addition, among the polyglutamine SCA cases, survival was significantly shorter for patients with SCA1 than those with SCA2, SCA3, SCA6, or SCA7.⁴

The EUROSCA natural history study is a European multicenter longitudinal cohort study of patients with SCA1, SCA2, SCA3, and SCA6. It was initiated in 2005 with the goal of characterizing the natural history of the disease and identifying prognostic factors. We recorded phenotypical differences between genotypes at baseline and identified factors that determined disease severity. Analyses of longitudinal data after two⁵ and eight⁶ years allowed us to establish genotype-specific progression rates and identify factors that determine the course of the disease. In this study, we report survival data of the EUROSCA participants based on an observational period of 10 years. The aim of this study was to (a) quantify overall survival of patients with SCA1, SCA2, SCA3, or SCA6, (b) identify prognostic factors that influence survival, and (c) develop a prognostic model that allows prediction of individual survival based on genetic and clinical characteristics.

Methods

Study design and population

The study population consisted of 525 SCA patients recruited from the longitudinal multicenter (17 European centers) EUROSCA prospective cohort study⁷ between July 1, 2005 and Aug 31, 2006. Patients were identified with the help of an electronic patient registry that contained data for all patients with spinocerebellar ataxias who had been in contact with one of the study centers. These patients suffered from progressive, otherwise unexplained, ataxia and had a positive molecular genetic test for SCA1 (n = 117), SCA2 (n = 162), SCA3 (n = 139), or SCA6 (n = 107). Assessments were performed according to a written study protocol. Patients were seen at baseline and followed by annual visits for three years. Afterwards, study participants entered an extension phase in which study assessments were performed during routine visits, resulting in irregular intervals between the visits. The database was locked in November 03, 2016, after a maximum observation period of 11 years. The ethics committees of the participating centers approved the study. Written informed consent was obtained from all study participants at enrollment.

Outcome and predictor variables

The clinical outcome was overall survival. We updated the vital status available in the electronic EUROSCA patient registry to avoid survival bias. Thus, we retrieved the updated vital status from the electronic database when available, through interviews of family members, and by interrogation of records from civil registry offices when feasible. As candidate predictors we selected gender, age at onset and repeat lengths of the expanded alleles which have been reported as predictors of death in previously published studies.²⁻⁴ As additional candidates, we selected disease duration, and factors that characterize the neurological phenotype (SARA, INAS, individual non-ataxia signs), mood (PHQ-9) and physical state (BMI, disease stage) of the study participants. "Any use of physiotherapy" was included, because it is the only known therapeutic intervention in ataxia. The complete list of candidate predictors is given in table 1 of the appendix. Demographical data included age, age at ataxia onset, gender, disease duration, disease stage at enrollment, and use of physiotherapy at any time. Body mass index (BMI) at baseline was calculated using the formula [weight/height²]. Scores on the scale for the assessment and rating of ataxia (SARA)⁷, total scores on the inventory of non-ataxia signs (INAS, 0-16), and individual non-ataxia signs, as given in the INAS, including reported abnormalities, such as dysphagia and double vision,⁸ were recorded at baseline. To assess the severity of depressive symptoms, the depression scale of the Patient Health Questionnaire (PHQ-9) was used.⁹ The PHQ-9 is a 9-item self-rating questionnaire that simply scores each of the nine DSM-IV criteria for depressive disorders. The severity of depression is calculated by assigning scores of 0, 1, 2, and 3, to the response categories "not at all", "several days", "more than half the days" and "nearly every day" respectively. The sum score ranges from 0 (absence of depression) to 27 (severe depression). Repeat lengths of the expanded and normal alleles were determined at the Institute of Medical Genetics and Applied Genomics of the University of Tübingen (Tübingen, Germany).

Data analysis

Mean (standard deviation) or frequencies (percentages) were used to describe the continuous and categorical variables at baseline. Survival was calculated from the date of enrollment to death for any reason. Data for patients who were alive or lost to follow-up were censored. Time from enrollment was used as the time scale. Survival was estimated using the Kaplan-Meier method and compared using a log-rank test. Cox- proportional-hazard models adjusted for age at baseline were used to study prognostic factors, and then candidates with $P < 0.10$ were entered in to the multivariate Cox regression. The strongest contributing predictors for death from multivariate regression were selected through backward procedure based on the lowest Akaike information criterion (AIC). Because the backward selection models heavily relies on statistical significance which in turn depends on statistical power, we computed a posteriori statistical power to highlight an increase in the risk of death of 2 (HR = 2) for any binary variable with a proportion of patient of 50% in each group. Subsequent analyses were performed separately for each genotype, as survival differed between genotypes. Assumptions of hazard proportionality and log-linearity were verified.

A nomogram that included the selected prognostic factors was constructed from each final Cox model to estimate the probability of survival after five and 10 years. A raw prognostic score was computed by summing the contribution of each individual factor, based on the points given for each factor in the nomogram. We divided the patients of each genotype into three prognostic risk groups to provide a reasonable spread of risk. Thus, various cut-offs for the risk score were explored based on the optimal cut-off using the three-risk group approach.⁹ The distribution of 55%, 25%, and 20% for prognostic risk group 1 (*good prognosis*), 2 (*intermediate prognosis*), and 3 (*poor prognosis*), respectively, was used, as they were the most discriminative relative to the *c*-index (appendix). We performed calibration plots and computed the discrimination *c*-index to assess the performance of the nomograms. One thousand random samples of the population were used to derive the 95% confidence interval bootstrap percentile for the *c*-index.^{11,12} The multivariate model was internally validated using the 1,000-samples bootstrap procedure.

All data analyses were performed using SAS version 9·4 (SAS institute) and the R package. Values of $P < 0·05$ were considered to be statistically significant and all tests were two-sided.

Role of the funding source

The sponsors of the study had no role in the design, data collection, data analysis, data interpretation, or writing of the report. The corresponding author had full access to all data in the study and had final responsibility for the decision to submit for publication.

Results:

Between July 1, 2005, and Aug 31, 2006, we enrolled 525 patients with SCA1, SCA2, SCA3, or SCA6. Table 1 shows the clinical and demographical data. During the follow-up, 66 (13%) patients were lost to follow-up and 121 (23%) died: 36 (31%) with SCA1, 38 (24%) with SCA2, 34 (25%) with SCA3, and 13 (12 %) with SCA6. The causes of death were reported for 47% (57/121) of cases. Among them, pulmonary diseases (pneumonia or pulmonary insufficiency) were the most frequent (six in SCA1, four in SCA2, seven in SCA3, and one in SCA6), followed by unknown causes (three in SCA1, three in SCA2, six in SCA3, and two in SCA6), cardiac (five in SCA3 and three in SCA6), cancer (one in SCA1, two in SCA2, and three in SCA6), sepsis/cachexia (one in SCA1, one in SCA2, and two in SCA6), gastric (two in SCA2), suicide (one in SCA1 and one in SCA2), stroke (one in SCA2 and one in SCA3), and renal (one in SCA2).

The five-year survival rate was 80% (95% CI: 72 – 88) for SCA1, 87% (95% CI: 82 – 93) for SCA2, 87% (95% CI: 82 – 93) for SCA3, and 98% (95% CI: 95 – 100) for SCA6. The corresponding 10-year survival rate was 57% (95% CI: 47 – 69), 74% (95% CI: 67 – 81), 73% (95% CI: 65 – 82), and 87% (95% CI: 80 – 94). Overall, survival was significantly different between SCAs (figure 1, $p = 0.0002$). The risk of death was higher for SCA1 (HR: 3.79, 95% CI: 2.01 – 7.15), SCA2 (HR: 2.13, 95% CI: 1.13 – 4.00), and SCA3 (HR: 2.46, 95% CI: 1.30 – 4.66) than SCA6. Moreover, the risk of death for SCA1 was higher than that for SCA2 (HR: 1.80, 95% CI: 1.14 – 2.8) or SCA3 (HR: 1.63, 95% CI: 1.02 – 2.61), whereas it was similar between SCA2 and SCA3 (HR: 0.91, 95% CI: 0.57 – 1.44).

We applied univariate Cox regression modeling adjusted for age at baseline to identify predictors for death for each genotype. For SCA1, 19 of 28 evaluated predictors were associated with survival (appendix): CAG repeat number, age at onset, disease duration, BMI, disease stage, PHQ9 sum score, SARA score, number of non-ataxia signs, and the following individual non-ataxia signs: areflexia, paresis, muscle atrophy, fasciculation, myoclonus, chorea/dyskinesia, dystonia, resting tremor, urinary dysfunction, cognitive impairment and dysphagia (appendix). A predictive model obtained from the multivariate Cox analysis, adjusted on age at baseline identified two strongest contributing risk factors for death (table 2): dysphagia (HR: 4.52, 95% CI: 1.83 – 11.15; $p = 0.0011$) and higher SARA score (HR: 1.26, 95% CI: 1.19 – 1.33; $p < 0.0001$).

For SCA2, the significant predictors in the univariate analysis were CAG repeat number, age at onset, disease duration, disease stage, SARA score, number of non-ataxia signs, and the following individual non-ataxia signs: paresis, muscle atrophy, fasciculation, myoclonus, rigidity, chorea/dyskinesia, dystonia and cognitive impairment (appendix). The strongest contributing risk factors for death (table 2) were older age at inclusion (HR: 1.04, 95% CI: 1.01 – 1.08; $p = 0.0130$), longer CAG repeat number (HR: 1.16, 95% CI: 1.03 – 1.31; $p = 0.0158$), and higher SARA score (HR: 1.15, 95% CI: 1.10 – 1.20; $p < 0.0001$).

For SCA3, CAG repeat number, age at onset, disease duration, disease stage, PHQ9 sum score, SARA score, number of non-ataxia signs, and the following individual non-ataxia signs: extensor plantar signs, spasticity, paresis, muscle atrophy, fasciculation, rigidity, chorea/dyskinesia, dystonia and brainstem oculomotor were significant predictors of death in the univariate analysis (appendix). The strongest contributing risk factors (table 2) were older age at inclusion (HR: 1.44, 95% CI: 1.20 – 1.74; $p = 0.0001$), dystonia (HR: 2.65, 95% CI: 1.21 – 5.53; $p = 0.0151$), higher SARA score (HR: 1.26, 95% CI: 1.17 – 1.35; $p < 0.0001$), and a negative interaction between CAG repeat number and age at inclusion (HR: 0.994, 95% CI: 0.991 – 0.997; $p < 0.0001$). Patients with CAG-expanded alleles with less than 62 repeats had a higher risk of death for older age at inclusion, whereas those with more than 62 repeats had a higher risk of death for younger age at inclusion, independently of the severity of the disease. In addition, there was an age-dependent effect on the risk of death associated with CAG-expanded alleles: the older the age at baseline, the weaker the effect of CAG-expanded alleles on the risk of death, and conversely, the younger the age at baseline, the stronger the effect.

In SCA6, disease stage, SARA score and rigidity were significantly associated with survival in Cox univariate analyses, whereas urinary dysfunction ($p = 0.06$) and cognitive impairment ($p = 0.07$) were borderline (appendix). The only contributing risk factor for death was a higher SARA score (HR: 1.17, 95% CI: 1.08 – 1.27; $p = 0.0001$) (table 2).

A posteriori statistical power to highlight an increase in the risk of death of 2 (HR = 2) for any binary variable with a proportion of patient of 50% in each group was 55%, 58%, 53% and 24% for SCA1, 2, 3 and 6 respectively.

We built nomograms that included all selected factors from the final Cox models to predict the probability of five- and 10-year survival for each genotype (appendix). The nomograms showed that the SARA score contributed the most strongly to the prognosis for SCA1, SCA2, and SCA6, whereas age at baseline and its interaction with CAG were the strongest factors for SCA3. The number of CAG repeats and age at baseline had a moderate impact on the survival of SCA2 patients, whereas dysphagia and dystonia had a low impact on the survival of SCA1 and SCA3 patients,

respectively. A raw score was computed from the nomograms, and the patients were classified into three risk categories: *good*, *intermediate*, and *poor prognosis* based on the thresholds defined in the appendix. For example, a 50-year-old SCA1 patient (3 points) with dysphagia (17 points) and a SARA score of 20 (50 points) has 70 points, placing him in the *intermediate* group with a probability of five- and 10-year survival of 80% (95% CI 73 – 87) and 5% (95% CI 1 – 9), respectively (appendix).

The prognostic nomograms had good discriminatory capacity for all SCAs (appendix). The adjusted nomograms *c-index* for predicting death at 10 years was 0.905 ± 0.027 , 0.822 ± 0.032 , 0.891 ± 0.021 and 0.825 ± 0.054 for SCA1, 2, 3, and 6, respectively. Moreover, the Kaplan-Meier curves of the three stratification risk groups were clearly separated (figure 2). The calibration plots showed excellent agreement between the nomogram prediction and the actual predicted probability of five- and 10-year survival (appendix). The uncertainties measured by the bootstrapping procedure in the internal validation were close to the estimated HR, except for a slight deviation for the dysphagia parameter in SCA1 patients (table 2), suggesting robustness of the final model.

Discussion:

This study provides data on the overall survival of patients suffering from SCA1, SCA2, SCA3, or SCA6, based on 10-year longitudinal findings of the EUROSCA cohort. Strengths of our study include the large number of patients and the prospective design of the study. The 10-year observational period may appear to be short, given an estimated survival of SCA patients of 20 to 30 years after ataxia onset.^{4,13} However, the average disease duration of study participants at inclusion was 10 years. Thus, we followed the patients up to an average of 20 years after ataxia onset. The information on vital status in the study database was incomplete, because most of the deceased patients had not attended the study centers in the years before death. We therefore used alternative approaches, including interviews of family members and records from civil registry offices to update the information on vital status. This allowed us to recover 40% (49/121) of the deaths and reduced the bias due to censorship, which is one of the major sources of bias in survival analyses. The other possible sources of bias were the bias due to the omission of a balanced covariate and the missing of a covariate being a confounder.¹³ We were unable to consider all potential covariates in our model. For example, clinical signs other than those assessed by the used scales, imaging and biomarker data were not available.

In survival analysis, there is an ongoing debate on the choice of the optimal time scale. In this study, we used time-on-study rather than disease duration or chronological age as the time scale. Various simulation studies¹⁴⁻¹⁶ have shown the time-on-study time scale, adjusted for age at inclusion, to be the best as it is the most robust against misspecification (small bias) and is more suitable than other time scales to measure predictive discrimination, such as the time-dependent Area Under the Curve (AUC). We compared the different time scales to choose the most appropriate for our data. Our empirical results agreed with the simulation studies in that the time-on-study was the best.

Survival was shortest for SCA1, intermediate for SCA2 and SCA3, and longest for SCA6. These results corroborate the finding reported by Monin *et al.*⁴ that the age at death was lower in SCA1 than in other SCAs due to polyglutamine expansions. These findings characterize SCA1 as the disease with the least favorable prognosis among the polyglutamine SCAs. Correspondingly, two longitudinal studies found that the progression of ataxia severity in SCA1 was faster than in SCA2, SCA3, or SCA6.^{5,6,17} The 10-year death rate of the SCA2 patients of our cohort (24%) was lower than that of a Cuban SCA2 cohort (29%). Similarly, the death rate for SCA3 (25%) was lower than that of a Brazilian cohort (35%). Possible reasons for these discrepancies are selection bias, genetic background, and differences between health care systems.

We used Cox regression modelling to identify predictors for death in each genotype. For SCA1 patients, ataxia severity measured with SARA and the presence of dysphagia increased the risk of death. These findings are contrary to the results of an international retrospective study.¹² However, this study used different time scales and did not include clinical findings in the statistical models. For SCA2, the risk of death increased with older age at inclusion, longer CAG repeat number, and severity of ataxia. Longer CAG repeats were similarly found to be a risk factor for death in a Cuban SCA2 cohort.³ We were unable to confirm the effect of being female on death that was reported in the international retrospective study.¹² For SCA3, predictors of shorter survival identified by univariate Cox analysis, such as early age of onset and long CAG repeat length, overlapped with factors reported in the Brazilian SCA3 study.² None of the previous studies reported predictors for the risk of death in SCA6 patients. We found that only the severity of ataxia at baseline affected survival. The finding that the severity of ataxia at baseline measured with SARA was a predictor of survival in all genotypes underlines the clinical relevance and predictive power of SARA. In our analysis, we failed to find an effect on of physiotherapy on survival, although previous studies had shown a temporary symptomatic effect.^{19,20} We do not exclude to have missed some risk factors due to lack of power.

Nomograms are widely used prognostic tools in various fields of medicine. For example, there are nomograms that allow prediction of lymph node metastasis in cancer patients. These nomograms may assist physicians in decisions on surgical management.²²⁻²⁴ More recently, a prognosis nomogram was developed to predict individual outcomes after antiepileptic drug withdrawal in people with epilepsy.²⁵ One main limit of the nomogram is that it assumes that outcomes remain constant over time. Consequently, its accuracy becomes less good over time probably because of changes in natural history of the disease, early diagnosis detection and improvements in therapy.²¹ We constructed nomograms for each genotype that allowed predicting individual survival with high precision based on a number of easily accessible factors identified in the Cox models. Nomograms were constructed in a rigorous methodological framework, including the choice of the candidate predictors and time scale.¹⁶ The nomograms had good discriminatory capacity, and there was excellent agreement between the nomogram prediction and actual survival. DR Cox proposed to use the following distribution: 27%, 49.5%, and 27%, when categorizing the prognostic score in three groups.¹⁰ This distribution was not appropriate for our data, as we had a large number of patients with good prognoses. We chose the distribution that optimized the separation of the Kaplan Meier curves and thus retained the distribution with the largest *c*-index (appendix). However, the nomograms need to be externally validated on independent samples including non-

European patients to determine the generalizability of the model.^{10,11} They may be further improved by the incorporation of imaging data and biomarkers.

Our data extend the knowledge of the biological characteristics of SCA1, SCA2, SCA3, and SCA6. The nomograms are easy-to-use tools that may facilitate selection and stratification of patients for future clinical trials.

Contributors

ADi designed and executed the statistical analysis, and wrote the first draft of the report and reviewed the report; HJ and TS-H contributed to the conception, organisation, and execution of the research project and reviewed and commented on the statistical analysis and the report; AC, RL, ADu, AB, PC, CeM, CaM, LN, MarP, MR, ASo, ASu, LS, HH, BM, AF, AA, JI, JB, BPvdW, DT, SB, MP, JBS, PB, PG and K-JS organised and did the research project and reviewed and commented on the statistical analysis and the report; TK conceived, organised, and did the research project, and designed, reviewed, and commented on the statistical analysis and wrote the first draft of the report and reviewed the report; STdM contributed to the conception of the research project wrote the first draft of the report and reviewed the report.

Declaration of interests

STdM reports grants from EU FP6 EUROSCA, during the conduct of the study; ADi reports grants from Fondation pour la Recherche Médicale (FRM), grant number: PLP20151034334, during the conduct of the study; TK reports grants from EU FP6 EUROSCA, during the conduct of the study; MP reports grants from Friedreich Ataxia Research Alliance, grants from FNRS (Belgium), grants and personal fees from Biomarin, grants and personal fees from Voyager Therapeutics, personal fees from Apopharma, personal fees from Vertex, personal fees from Pfizer, grants from Euroataxia, outside the submitted work; BPvdW reports grants from Radboud university medical centre, grants from Hersenstichting, grants from ZonMW, grants from BBMRI-NL, grants from Gossweiler Foundation, grants from Bioblast Pharma, outside the submitted work; PB reports grants from European Commission, during the conduct of the study; personal fees from CENTOGENE AG, personal fees from Actelion Pharmaceuticals, outside the submitted work; TS-H reports grants from EU, during the conduct of the study; grants from Bundesministerium für Wirtschaft und Energie, grants from Ipsen Pharma, outside the submitted work; JBS reports grants from BMBF (GeNeMove) grants from EU (EUROSCA) during the conduct of the study; grants from the EU (HEALTH-F2-2010- 242193). JBS serves on scientific advisory boards for Lundbeck Inc., TEVA, Novartis, ForwardPharma and Lilly; he has received funding for travel and speaker honoraria from GlaxoSmithKline, Merz Pharmaceuticals, Medical Tribune, Lundbeck Inc., Pfizer Inc, Boehringer, Bayer; serves as Editor-in-Chief of the Journal of Neurochemistry and Associate Editor for eNeuro; PG is supported by the National Institute for Health Research University College London Hospitals Biomedical Research Centre; JS-K reports other financial support from Merz Pharma Gmbtt, from Medtronic Gbmtt, and from Ipsen Pharma, outside the submitted work; and JB, AA, AF, DT, HH, LS, RL, MR, AC, ASu, ASo, HJ, SB, JI, CaM, LN, MarP, BM, ADu, AB, CeM, PC, JB declare no competing interests.

Acknowledgments

This study was funded within the framework of EU FP6 (EUROSCA). Additional funds came from the German Ministry of Education and Research (BMBF; GeneMove), Polish Ministry of Scientific Research and Information Technology, and from the European Community's Seventh Framework Programme (FP7/2007-2013) under grant agreement number 2012-305121 "Integrated European –omics research project for diagnosis and therapy in rare neuromuscular and neurodegenerative diseases (NEUROMICS)". We thank Thomas Klopstock (Department of Neurology, University of Munich, Munich, Germany) and Jens Petersen (Department of Neurology, University of Munich, Munich, Germany, Department of Neurology, University of Zurich, Zurich, Switzerland), and Cathérine Delnooz (Department of Neurology, Maxima Medical Centre, Veldhoven, The Netherlands) and Rafal Rola (First Department of Neurology, Institute of Psychiatry and Neurology, Warsaw, Poland) for contribution of patients and help in patient assessment. We thank the Fondation pour la Recherche Médicale for the financial support of Alhassane Diallo, grant number: PLP20151034334.

References:

1. Durr A. Autosomal dominant cerebellar ataxias: polyglutamine expansions and beyond. *Lancet Neurol.* 2010; **9**:885-94.
2. Kieling C, Prestes PR, Saraiva-Pereira ML, Jardim LB. Survival estimates for patients with Machado-Joseph disease (SCA3). *Clin Genet.* 2007; **72**:543-5.
3. Almaguer-Mederos LE, Aguilera Rodríguez R, González Zaldivar Y, Almaguer Gotay D, Cuello Almarales D, Laffita Mesa J, et al. Estimation of survival in spinocerebellar ataxia type 2 Cuban patients. *Clin Genet.* 2013; **83**:293-4.
4. Monin M-L, Tezenas du Montcel S, Marelli C, Cazeneuve C, Charles P, Tallaksen C, et al. Survival and severity in dominant cerebellar ataxias. *Ann Clin Transl Neurol.* 2015; **2**:202-7.
5. Jacobi H, Bauer P, Giunti P, Labrum R, Sweeney MG, Charles P, et al. The natural history of spinocerebellar ataxia type 1, 2, 3, and 6: a 2-year follow-up study. *Neurology.* 2011; **77**:1035-41.
6. Jacobi H, du Montcel ST, Bauer P, Giunti P, Cook A, Labrum R, et al. Long-term disease progression in spinocerebellar ataxia types 1, 2, 3, and 6: a longitudinal cohort study. *Lancet Neurol.* 2015; **14**:1101-8.
7. Schmitz-Hübsch T, du Montcel ST, Baliko L, Berciano J, Boesch S, Depondt C, et al. Scale for the assessment and rating of ataxia: development of a new clinical scale. *Neurology.* 2006; **66**:1717-20.
8. Schmitz-Hübsch T, Coudert M, Bauer P, Giunti P, Globas C, Baliko L, et al. Spinocerebellar ataxia types 1, 2, 3, and 6: disease severity and nonataxia symptoms. *Neurology.* 2008; **71**:982-9.
9. Spitzer RL, Kroenke K, Williams JB. Validation and utility of a self-report version of PRIME-MD: the PHQ primary care study. Primary Care Evaluation of Mental Disorders. Patient Health Questionnaire. *JAMA.* 1999; **282**:1737-44.
10. Cox DR. Note on Grouping. *J Am Stat Assoc.* 1957; **52**:543--7.
11. Royston P, Altman DG. External validation of a Cox prognostic model: principles and methods. *BMC Med Res Methodol.* 2013; **13**:33.
12. van Houwelingen HC. Validation, calibration, revision and combination of prognostic survival models. *Stat Med.* 2000; **19**:3401-15.
13. Klockgether T, Lüdtke R, Kramer B, Abele M, Bürk K, Schöls L, et al. The natural history of degenerative ataxia: a retrospective study in 466 patients. *Brain J Neurol.* 1998; **121**:589-600.
14. Lin NX, Logan S, Henley WE. Bias and sensitivity analysis when estimating treatment effects from the cox model with omitted covariates. *Biometrics.* 2013; **69**:850-60.
15. Chalise P, Chicken E, McGee D. Baseline age effect on parameter estimates in Cox models. *J Stat Comput Simul.* 2012; **82**:1767-74.
16. Chalise P, Chicken E, McGee D. Performance and Prediction for Varying Survival Time Scales. *Commun Stat - Simul Comput.* 2013; **42**:636-49.
17. Chalise P, Chicken E, McGee D. Time Scales in Epidemiological Analysis: An Empirical Comparison. *Int J Stat Probab.* 2016; **5**:91.
18. Ashizawa T, Figueroa KP, Perlman SL, Gomez CM, Wilmot GR, Schmahmann JD, et al. Clinical characteristics of patients with spinocerebellar ataxias 1, 2, 3 and 6 in the US; a prospective observational study. *Orphanet J Rare Dis.* 2013; **8**:177.

19. Keller JL, Bastian AJ. A home balance exercise program improves walking in people with cerebellar ataxia. *Neurorehabil Neural Repair*. 2014; **28**:770-8.
20. Synofzik M, Ilg W. Motor Training in Degenerative Spinocerebellar Disease: Ataxia-Specific Improvements by Intensive Physiotherapy and Exergames. *BioMed Res Int*. 2014; **2014**:583507.
21. Balachandran VP, Gonen M, Smith JJ, DeMatteo RP. Nomograms in oncology: more than meets the eye. *Lancet Oncol*. 2015; **16**:e173-180.
22. Kim D-Y, Shim S-H, Kim S-O, Lee S-W, Park J-Y, Suh D-S, et al. Preoperative nomogram for the identification of lymph node metastasis in early cervical cancer. *Br J Cancer*. 2014; **110**:34-41.
23. Hayashi Y, Xiao L, Suzuki A, Blum MA, Sabloff B, Taketa T, et al. A Nomogram associated with high probability of malignant nodes in the surgical specimen after trimodality therapy of patients with oesophageal cancer. *Eur J Cancer Oxf Engl*. 2012; **48**:3396-404.
24. Thompson AM, Turner RM, Hayen A, Aniss A, Jalaty S, Learoyd DL, et al. A preoperative nomogram for the prediction of ipsilateral central compartment lymph node metastases in papillary thyroid cancer. *Thyroid Off J Am Thyroid Assoc*. 2014; **24**:675-82.
25. Lamberink HJ, Otte WM, Geerts AT, Pavlovic M, Ramos-Lizana J, Marson AG, et al. Individualised prediction model of seizure recurrence and long-term outcomes after withdrawal of antiepileptic drugs in seizure-free patients: a systematic review and individual participant data meta-analysis. *Lancet Neurol*. 2017; **16**:523-31.

Table 1: Population characteristics at baseline

	SCA1 (n=117)	SCA 2 (n=162)	SCA 3 (n=139)	SCA 6 (n=107)
Gender (n, %male)	71 (61)	74 (46)	73 (53)	58 (54)
Age (years)	46.3 ± 12.2	46.4 ± 13.3	48.8 ± 11.8	65.0 ± 10.9
Age at onset (years)	36.7 ± 10.4	35.2 ± 12.5	37.0 ± 11.3	54.3 ± 10.6
Disease duration (years)	9.5 ± 5.7	11.1 ± 6.0	11.7 ± 6.0	10.7 ± 6.9
Number of CAG repeats	47.6 ± 5.6	39.4 ± 3.5	69.1 ± 4.6	22.5 ± 2.2
BMI (kg/m ²)	24.4 ± 4.1	25.1 ± 4.3	23.1 ± 4.0	25.7 ± 4.1
SARA score	15.6 ± 9.1	15.7 ± 8.0	15.1 ± 8.5	15.2 ± 6.8
PHQ-9 sum score	6.7 ± 6.4	5.5 ± 4.9	6.9 ± 6.2	5.3 ± 5.4
Any physiotherapy use (yes)	43 (37)	75 (46)	75 (54)	51 (48)
Number of non-ataxia signs	4.8 ± 2.2	4.2 ± 2.2	4.9 ± 2.6	1.9 ± 1.6
Death (n, % yes)	36 (31)	38 (24)	34 (25)	13 (12)
Median follow-up (years), 95% CI	9.9 (6.9 10.1)	10.2 (10.1 10.3)	10.2 (10.1 10.4)	10.2 (10.1 10.3)

The categorical variables are shown as n (%), the continuous variables as mean (SD). SARA = Scale for the Assessment and Rating of Ataxia. SCA = spinocerebellar ataxia.

Table 2: Multivariate Cox model

Parameters	HR	95 % CI		p-value	§Max score in		Internal validation		
					nomogram	Median (IQR)	BHR	BCI	HR 95 %
SCA1									
Age at baseline (years)	1.01	0.98	1.04	0.53021	6	46 (37 55)	1.003	0.975	1.033
Dysphagia (yes)	4.52	1.83	11.15	0.00107	17	0 (1 1)	7.029	1.939	41.81
SARA score	1.26	1.19	1.33	<.0001	100	13.5 (8.5 20.5)	1.288	1.201	1.382
SCA2									
Age at baseline (years)	1.04	1.01	1.08	0.01300	51	47.5 (37 54)	1.045	1.009	1.082
CAG (number repeats)	1.16	1.03	1.31	0.01580	53	39 (37 41)	1.172	1.028	1.337
SARA score	1.15	1.10	1.20	<.0001	100	14 (10 19.5)	1.155	1.103	1.210
SCA3									
Age at baseline (years)	1.44	1.20	1.74	0.0001	100	48 (40 56)	1.692	1.179	2.486
Dystonia (yes)	2.65	1.21	5.53	0.0151	4	0 (0 0)	2.898	1.132	7.341
SARA score	1.26	1.17	1.35	<.0001	33	14 (10 20.5)	1.295	1.189	1.406
CAG (number repeats)	1.04	0.89	1.21	0.6501	5	69 (66 72)	1.151	0.867	1.533
Interaction Age*CAG	0.994	0.991	0.997	<.0001	86	3328 (2850 3776)	0.993	0.988	0.998
SCA6									
Age at baseline (years)	1.02	0.95	1.08	0.6426	14	67 (58 73)	1.018	0.947	1.096
SARA score	1.17	1.08	1.27	0.0001	100	14 (10.5 19)	1.187	1.080	1.306

HR: hazard ratio, CI: confidence interval, BHR: bootstrap hazard ratio, BCI: bootstrap confidence interval; §Maximum number for the highest observed value attributed by a nomogram for each predictor.

Main figures:

Figure 1: Overall survival from enrollment according to genotype

Figure 2: Overall survival from enrollment according to the characterization score from nomograms by genotype

Appendix

Figure 1: Prognostic nomograms to predict the probability of individual overall survival of patients with spinocerebellar ataxia type 1, 2, 3, and 6.

Points are assigned to each risk factor by drawing a line upward from the corresponding value to the 'Points' line. The total sum point for the three factors is plotted on the 'Total points' line. A line is drawn down to read the corresponding predictions of the probability of five- and 10-year survival.

For example, a 50-year-old SCA1 patient (3 points) with dysphagia (17 points) and a SARA score of 20 (50 points) has 70 points (3 + 17 + 50), placing him in the *intermediate* group with a probability of five- (blue line) and 10-year (red line) survival of 80% and 5%, respectively.

Figure 2: Calibration plots for predicting ataxia patient overall survival at each time point by genotype.

The X-axis shows the nomogram predicted probability of survival. Patients were grouped by quartiles of predicted risk. The Y-axis is the actual probability of five- (blue) and 10-year (red) survival estimated by the Kaplan-Meier method. The solid line represents the values from the nomograms with their 95% CI. A plot along a 45-degree line (dotted line) would indicate a perfect calibration model in which the predicted probabilities are identical to the actual outcomes.

Table 1: Univariate Cox model in SCAs of the 28 potential predictors of death

Table 2: Various range and threshold prognostic score computed from nomograms

Table 3: Discrimination measures and β estimates with their SE from the Cox model

Table 4: Individual non-ataxia signs characteristics at baseline

Table 5: Predicted probability and actual observed survival of five- and 10-year

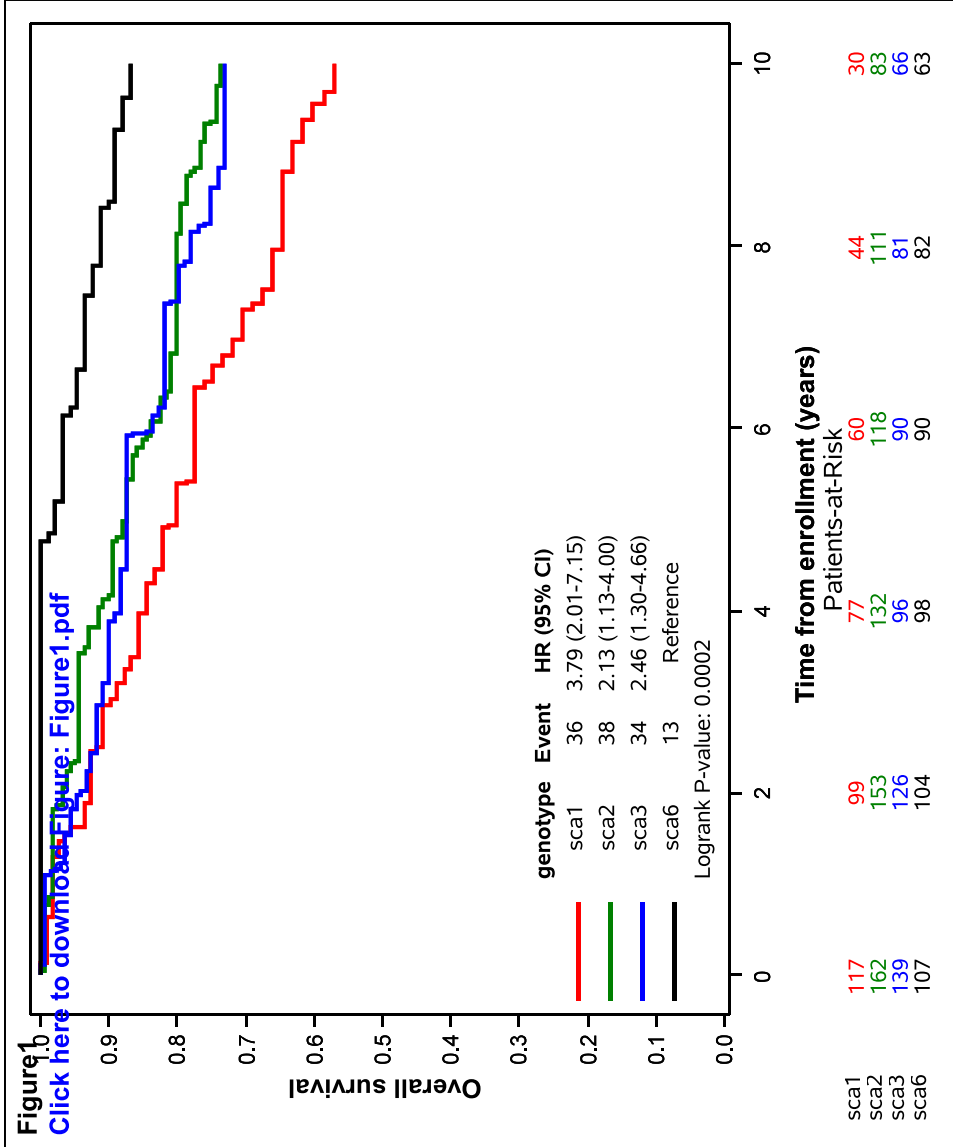
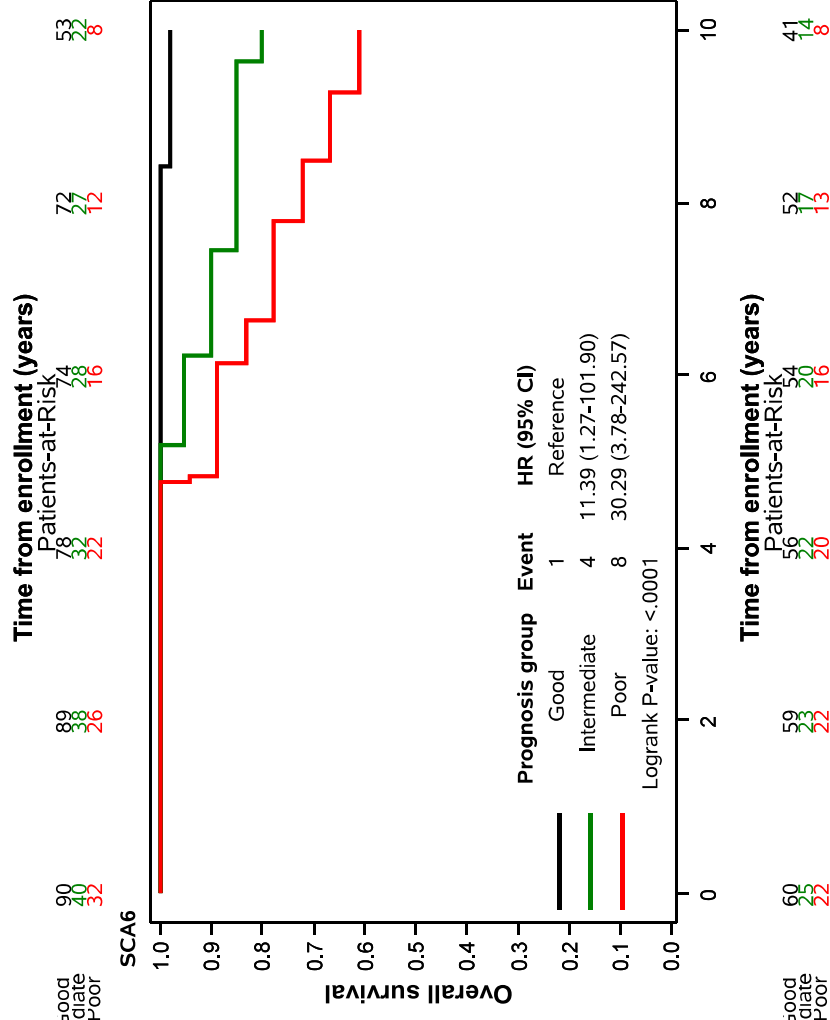
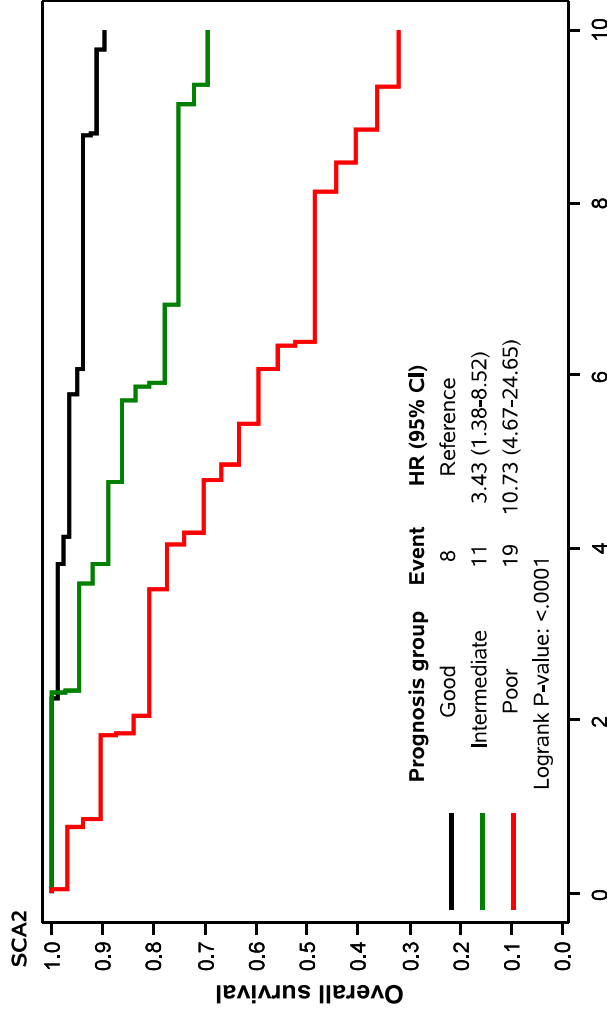
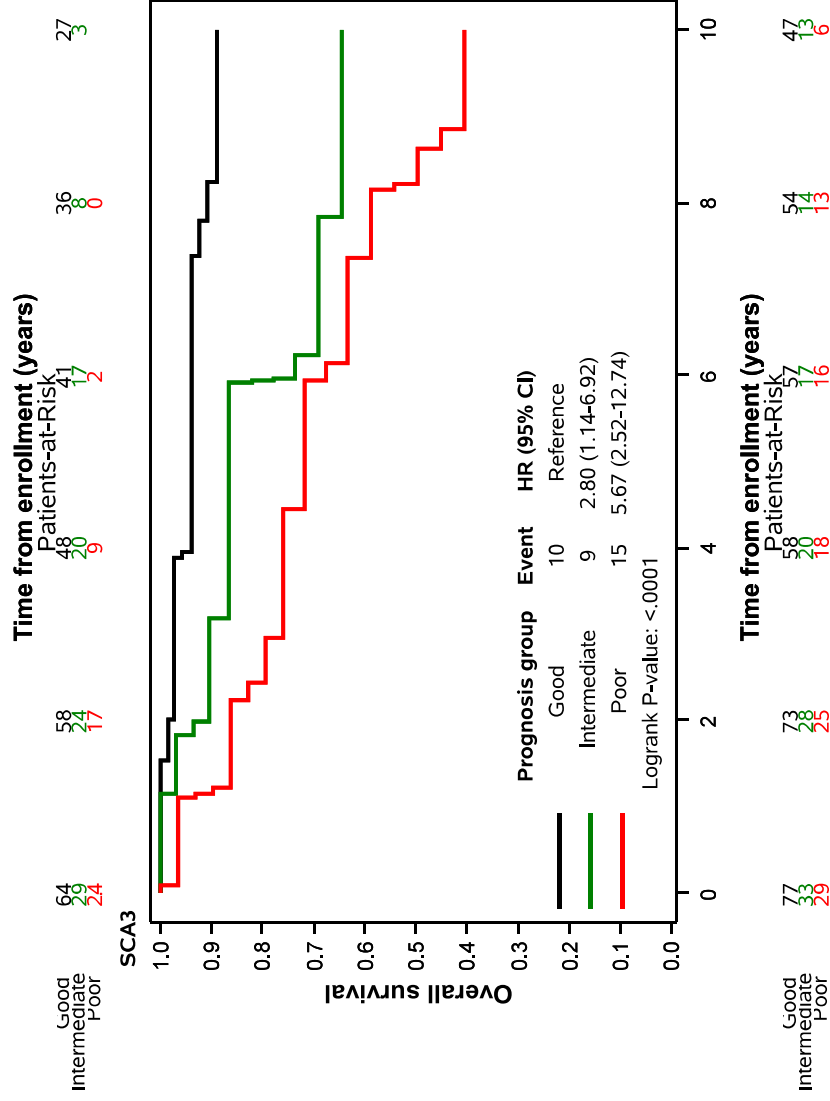
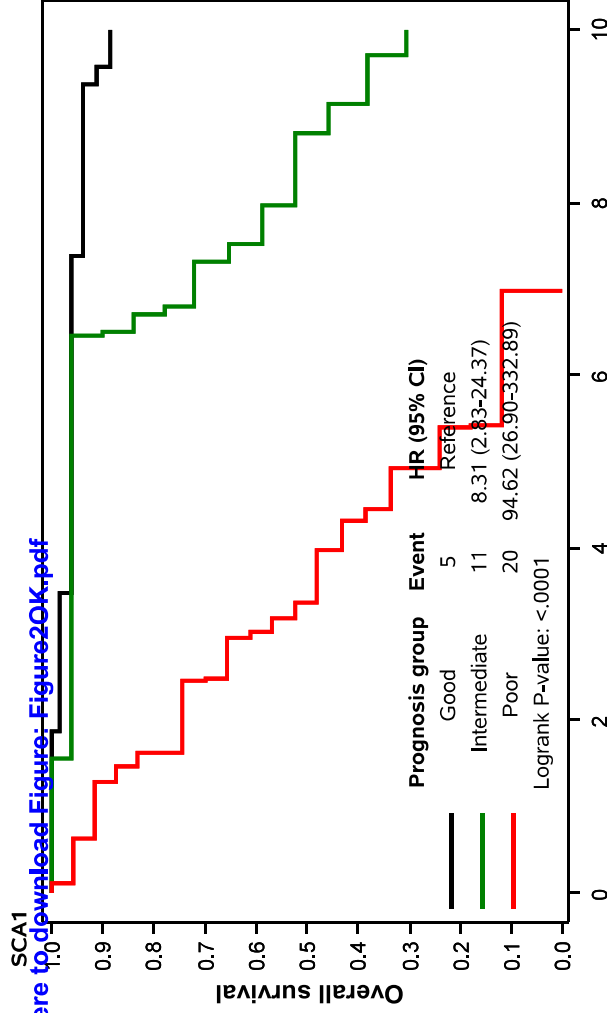


Figure2

[Click here to download Figure: Figure2OK.pdf](#)



Appendix

Figure 1: Prognostic nomograms to predict the probability of individual overall survival of patients with spinocerebellar ataxia type 1, 2, 3, and 6.

Points are assigned to each risk factor by drawing a line upward from the corresponding value to the 'Points' line. The total sum point for the three factors is plotted on the 'Total points' line. A line is drawn down to read the corresponding predictions of the probability of five- and 10-year survival.

For example, a 50-year-old SCA1 patient (3 points) with dysphagia (17 points) and a SARA score of 20 (50 points) has 70 points ($3 + 17 + 50$), placing him in the *intermediate* group with a probability of five- (blue line) and 10-year (red line) survival of 80% and 5%, respectively.

Figure 2: Calibration plots for predicting ataxia patient overall survival at each time point by genotype.

The X-axis shows the nomogram predicted probability of survival. Patients were grouped by quartiles of predicted risk. The Y-axis is the actual probability of five- (blue) and 10-year (red) survival estimated by the Kaplan-Meier method. The solid line represents the values from the nomograms with their 95% CI. A plot along a 45-degree line (dotted line) would indicate a perfect calibration model in which the predicted probabilities are identical to the actual outcomes.

Table 1: Univariate Cox model in SCAs of the 28 potential predictors of death

	SCA1	SCA2	SCA3	SCA6
	HR (95 % CI)	HR (95 % CI)	HR (95 % CI)	HR (95 % CI)
Gender (male)	0.80 (0.41 1.56)	1.34 (0.71 2.54)	1.42 (0.72 2.80)	1.61 (0.52 4.94)
Age at onset (years)	0.84 (0.78 0.90)	0.90 (0.86 0.95)	0.89 (0.85 0.94)	0.97 (0.90 1.04)
Disease duration (years)	1.20 (1.12 1.28)	1.11 (1.05 1.16)	1.12 (1.06 1.18)	1.03 (0.96 1.12)
Number of CAG repeats	1.13 (1.06 1.19)	1.27 (1.15 1.40)	1.21 (1.08 1.34)	1.11 (0.36 3.42)
BMI (kg/m ²)	0.81 (0.74 0.90)	0.94 (0.86 1.04)	0.94 (0.85 1.03)	1.02 (0.88 1.17)
SARA score	1.23 (1.17 1.29)	1.16 (1.12 1.21)	1.16 (1.12 1.20)	1.17 (1.08 1.27)
Number of non-ataxia signs	1.60 (1.32 1.95)	1.42 (1.24 1.63)	1.99 (1.62 2.46)	1.22 (0.94 1.58)
Hyperreflexia (yes)	0.66 (0.34 1.30)	0.74 (0.26 2.10)	1.73 (0.84 3.57)	0.71 (0.15 3.28)
Areflexia (yes)	2.53 (1.22 5.26)	1.82 (0.86 3.85)	1.28 (0.58 2.82)	0.75 (0.20 2.89)
Extensor plantar (yes)	2.01 (0.94 4.29)	1.21 (0.60 2.43)	2.78 (1.34 5.77)	*
Spasticity (yes)	0.67 (0.34 1.30)	1.59 (0.61 4.10)	4.14 (1.77 9.67)	2.34 (0.64 8.59)
Paresis (yes)	2.90 (1.47 5.74)	3.32 (1.60 6.91)	4.36 (2.16 8.80)	3.19 (0.71 14.42)
Muscle atrophy (yes)	3.96 (2.03 7.73)	6.14 (3.14 12.00)	2.89 (1.41 5.95)	0.45 (0.06 3.49)
Fasciculations (yes)	3.39 (1.67 6.88)	1.93 (1.00 3.69)	3.04 (1.54 6.02)	*
Myoclonus (yes)	3.22 (1.13 9.17)	2.80 (1.34 5.87)	1.84 (0.43 7.86)	*
Rigidity (yes)	2.83 (0.36 22.05)	5.44 (2.37 12.49)	3.19 (1.36 7.46)	8.83 (2.64 29.55)
Chorea/dyskenia (yes)	3.01 (1.04 8.73)	3.83 (1.46 10.02)	7.83 (3.57 17.20)	2.54 (0.31 20.80)
Dystonia (yes)	3.63 (1.73 7.61)	2.31 (1.09 4.90)	4.10 (2.08 8.07)	1.98 (0.25 15.61)
Resting tremor (yes)	3.08 (1.17 8.07)	1.27 (0.53 3.04)	2.06 (0.49 8.67)	4.38 (0.56 34.19)
Sensory symptoms (yes)	1.68 (0.74 3.82)	0.63 (0.31 1.26)	1.48 (0.63 3.49)	0.89 (0.29 2.76)
Urinary dysfunction (yes)	2.01 (1.02 3.96)	1.25 (0.65 2.38)	1.81 (0.87 3.75)	2.99 (0.96 9.29)
Cognitive impairment (yes)	3.03 (1.520 6.03)	2.63 (1.36 5.08)	1.03 (0.44 2.40)	3.13 (0.93 10.57)
Brainstem oculomotor signs (yes)	1.63 (0.85 3.14)	1.36 (0.71 2.61)	3.01 (1.40 6.46)	2.32 (0.68 7.90)
Dysphagia (yes)	4.14 (1.81 9.48)	1.59 (0.82 3.07)	1.93 (0.92 4.06)	0.98 (0.33 2.93)
Double vision (yes)	1.71 (0.77 3.84)	1.22 (0.58 2.60)	1.39 (0.69 2.81)	1.94 (0.65 5.79)
[§] Any physiotherapy use (yes)	1.85 (0.96 3.57)	1.23(0.65 2.34)	0.79 (0.40 1.56)	0.96 (0.32 2.90)
PHQ-9 sum score	1.05 (1.00 1.10)	0.99(0.93 1.07)	1.06 (1.02 1.11)	1.05 (0.96 1.14)
Disease stage (Independent as reference)	1	1	1	1
Dependent on walking aids	5.36 (2.07 13.83)	2.83 (1.22 6.67)	15.33 (1.99 118.21)	7.911 (0.88 57.73)
Dependent on wheelchair	48.0 (16.16 142.70)	10.25 (4.75 22.13)	91.76 (12.0 700.7)	13.64 (1.30 143.0)

*The model did not converge due to the absence of an event (death) in one of the modalities, HR: hazard ratio, CI: confidence interval, bold indicates the significance of a predictor of risk of death (HR not included 1);

[§]variable was used as time-dependent covariate in Cox model. All analyses were adjusted on age at inclusion.

Table 2: Various range and threshold prognostic score computed from nomograms

	Observed total score range	Good prognosis	Intermediate prognosis	Poor prognosis	c-index
Our proposed cut-off (55, 25 and 20%)					
SCA1	2.7 – 120.4	<48 (64) [§]	48 – 70 (29)	>70 (24)	0.905
SCA2	31.7 – 146.4	<74 (90)	74 – 102 (40)	>102 (32)	0.822
SCA3[¶]	39.9 – 131.7	<79 (77)	79 – 92 (33)	>92 (29)	0.891
SCA6	3.5 – 112.0	<53 (60)	53 – 68 (25)	>68 (22)	0.825
According to tertile (33, 33 and 33%)					
SCA1	2.7 – 120.4	<35 (39)	35 – 56 (39)	>56 (39)	0.823
SCA2	31.7 – 146.4	<62 (53)	62 – 83 (53)	>83 (55)	0.781
SCA3[¶]	39.9 – 131.7	<69 (44)	69 – 84 (44)	>84 (46)	0.715
SCA6	3.5 – 112.0	<42 (35)	42 – 58 (35)	>58 (37)	0.726
Proposed by DR Cox (27, 49.5 and 27%)					
SCA1	2.7 – 120.4	<29 (32)	29 – 45 (57)	>45 (28)	0.825
SCA2	31.7 – 146.4	<59 (44)	59 – 71 (79)	>71 (38)	0.774
SCA3[¶]	39.9 – 131.7	<65 (36)	65 – 91 (66)	>91 (32)	0.712
SCA6	3.5 – 112.0	<39 (29)	39 – 67 (53)	>67 (25)	*

[¶]Interaction between age and CAG repeat length (age x CAG) was divided by 1,000 in the total score computation; *Model did not converged; [§]numbers in brackets are the number of patients in each group.

Table 3: Discrimination measures and β estimates with their SE from the Cox model

Measures	SCA1		SCA2		SCA3		SCA6	
	Estimate	SE	Estimate	SE	Estimate	SE	Estimate	SE
c-index	0.905	0.027	0.822	0.032	0.891	0.021	0.825	0.054
β (SE): group 2 versus 1	2.110	0.549	1.233	0.465	1.031	0.461	2.432	1.118
β (SE): group 3 versus 1	4.614	0.640	2.373	0.425	1.735	0.413	3.411	1.062

All values are based on scores from the nomograms. The risk groups were: group 1 (*Good prognosis*), group 2 (*Intermediate prognosis*), and group 3 (*Poor prognosis*). β is the estimate with their SE from the Cox model. Standard error (SE) for the *c*-index was estimated from 1,000 bootstrap samples.

Table 4: Individual non-ataxia signs characteristics at baseline

	SCA1 (n=117)	SCA 2 (n=162)	SCA 3 (n=139)	SCA 6 (n=107)
Hyperreflexia (n, % yes)	79 (68)	21 (13)	53 (39)	23 (22)
Areflexia (n, % yes)	21 (18)	104 (65)	78 (57)	24 (23)
Extensor plantor sign (n, % yes)	54 (51)	45 (31)	57 (42)	2 (2)
Spasticity (n, % yes)	67 (59)	14 (9)	60 (44)	15 (15)
Paresis (n, % yes)	27 (23)	23 (15)	34 (25)	6 (6)
Muscle atrophy (n, % yes)	34 (29)	35 (22)	52 (38)	12 (12)
Fasciculations (n, % yes)	45 (39)	61 (38)	51 (37)	3 (3)
Myoclonus (n, % yes)	5 (4)	22 (14)	6 (4)	0 (0)
Rigidity (n, % yes)	2 (2)	11 (7)	14 (10)	6 (6)
Chorea/dyskenia (n, % yes)	8 (7)	11 (7)	14 (10)	2 (2)
Dystonia (n, % yes)	15 (13)	23 (14)	33 (24)	4 (4)
Resting tremor (n, % yes)	8 (7)	24 (15)	5 (4)	2 (2)
Sensory symptoms (n, % yes)	69 (62)	106 (69)	83 (65)	49 (47)
Urinary dysfunction (n, % yes)	41 (35)	64 (40)	63 (46)	32 (30)
Cognitive impairment (n, % yes)	25 (22)	41 (26)	26 (19)	10 (9)
Brainstem oculomotor signs (n, % yes)	44 (38)	58 (36)	72 (53)	18 (17)
Dysphagia (n, % yes)	70 (60)	85 (53)	83 (60)	58 (54)
Double vision (n, % yes)	18 (15)	32 (20)	78 (56)	45 (42)

Table 5: Predicted probability and actual observed five- and 10-year survival

Genotype	§Groups	Time prediction			
		5-year survival prediction		10-year survival prediction	
		Predicted	Observed	Predicted	Observed
SCA1	1	0.306	0.302	0.000	0.000
	2	0.885	0.881	0.327	0.315
	3	0.980	1.000	0.831	0.867
	4	0.999	1.000	0.952	0.950
SCA2	1	0.640	0.630	0.351	0.335
	2	0.937	0.943	0.828	0.823
	3	0.909	0.918	0.816	0.832
	4	0.995	1.000	0.961	0.971
SCA3	1	0.584	0.577	0.167	0.144
	2	0.912	0.926	0.758	0.773
	3	0.991	1.000	0.933	0.966
	4	0.999	1.000	0.997	1.000
SCA6	1	0.909	0.910	0.700	0.682
	2	0.999	1.000	0.807	0.815
	3	0.999	1.000	0.934	0.955
	4	0.998	1.000	0.990	1.000

§Participants for each genotype were grouped in quartiles based on the risk score from the respective multivariate model.

In each genotype, the predicted probability of five- and 10-year survival was very close to the actual observed survival supporting the statement of a good calibration.

Author's affiliations

Alhassane Diallo, MD, Heike Jacobi, MD, Arron Cook, MD, Robyn Labrum, PhD, Prof Alexandra Durr, MD, Prof Alexis Brice, MD, Perrine Charles, MD, Cecilia Marelli, MD, Caterina Mariotti, MD, Lorenzo Nanetti, MD, Marta Panzeri, MD, Maria Rakowicz, PhD, Anna Sobanska, MD, Anna Sulek, PhD, Tanja Schmitz-Hübsch, MD, Ludger Schöls, MD, Holger Hengel, MD, Prof Bela Melegh, PhD, Prof Alessandro Filla, MD, Antonella Antenora, MD, Jon Infante, MD, Prof José Berciano, MD, Bart P. van de Warrenburg, PhD, Dagmar Timmann, MD, Sylvia Boesch, MD, Prof Massimo Pandolfo, MD, Prof Jörg B. Schulz, MD, Peter Bauer, MD, Paola Giunti, PhD, Kang Jun-Suk, MD, Prof Thomas Klockgether, MD, and Sophie Tezenas du Montcel, PhD.

Alhassane Diallo, MD, Sophie Tezenas du Montcel, PhD: Sorbonne Universités, Université Pierre et Marie Curie (UPMC) Univ Paris 06, UMR S 1136, INSERM U 1136, Institut Pierre Louis d'Epidémiologie et de Santé Publique, F-75013, Paris, France

Heike Jacobi, MD, Tanja Schmitz-Hübsch, MD, Prof Thomas Klockgether: Department of Neurology, University Hospital of Heidelberg, Heidelberg, and German Center for Neurodegenerative Diseases (DZNE), Bonn, Germany

Tanja Schmitz-Hübsch, MD: Charité-Universitätsmedizin Berlin, NeuroCure Clinical Research Center, Clinical Neuroimmunology Group, Berlin, Germany

Arron Cook, MD, Paola Giunti, PhD: Department of Molecular Neuroscience, UCL, Institute of Neurology, London, United Kingdom

Robyn Labrum, PhD: Neurogenetics Laboratory, National Hospital of Neurology and Neurosurgery, UCLH, London, United Kingdom

Prof Alexandra Durr, MD, Prof Alexis Brice, MD : Sorbonne Universités, UPMC Univ Paris 06, UMRS_1127, INSERM, U 1127, CNRS, UMR 7225, Institut du Cerveau et de la Moelle épinière, ICM, Pitié-Salpêtrière University Hospital Paris, France.

Prof Alexandra Durr, MD, Prof Alexis Brice, MD, Perrine Charles, MD : APHP, Genetics Department, Pitié-Salpêtrière University Hospital Paris, France

Cecilia Marelli, MD : Service de Neurologie – CMRR, CHRU Gui de Chauliac, 80, av. A. Fliche, 34295 - Montpellier CEDEX 05, France

Caterina Mariotti, MD, Lorenzo Nanetti, MD, Marta Panzeri, MD: SOSD Genetics of Neurodegenerative and Metabolic Diseases, Fondazione-IRCCS Istituto Neurologico Carlo Besta, Milan, Italy

Maria Rakowicz, PhD, Anna Sobanska, MD: Department of Clinical Neurophysiology, Institute of Psychiatry and Neurology, Warsaw, Poland

Anna Sulek, PhD: Department of Genetics, Institute of Psychiatry and Neurology, Warsaw, Poland

Ludger Schöls, MD, Holger Hengel, MD: Department of Neurodegeneration and Hertie-Institute for Clinical Brain Research, University of Tübingen and Deutsches Zentrum für Neurodegenerative Erkrankungen (DZNE), D-72076 Tübingen, Germany

Prof Bela Melegh, PhD: Department of Medical Genetics, and Szentagothai Research Center, University of Pécs, Pécs, Hungary

Prof Alessandro Filla, MD, Antonella Antenora, MD: Department of Neuroscience, and Reproductive and Odontostomatological Sciences, Federico II University Naples, Italy

Jon Infante, MD, Prof José Berciano, MD: Service of Neurology, University Hospital Marqués de Valdecilla (IDIVAL), University of Cantabria (UC) and Centro de Investigación Biomédica en Red de Enfermedades Neurodegenerativas (CIBERNED), Santander, Spain

Bart P. van de Warrenburg, PhD: Department of Neurology, Donders Institute for Brain, Cognition and Behaviour, Radboud University Medical Center, PO Box 9101, 6500 HB Nijmegen, The Netherlands

Dagmar Timmann, MD: Department of Neurology, Essen University Hospital, University of Duisburg-Essen

Sylvia Boesch, MD: Department of Neurology, Medical University, Innsbruck, Innsbruck Austria

Prof Massimo Pandolfo, MD: Université Libre de Bruxelles (ULB), Neurology Service - ULB Hôpital Erasme, ULB Laboratory of Experimental Neurology, Brussels, Belgium

Prof Jörg B. Schulz, MD: Department of Neurology, RWTH Aachen University, Pauwelsstraße 30, 52074 Aachen, Germany and JARA - Translational Brain Medicine, Aachen-Jülich, INM 11, Germany

Peter Bauer, MD: Institute of Medical Genetics and Applied Genomics, University of Tübingen, Tübingen, Germany

Prof Bela Melegh, PhD: Department of Neurology, Zala County Hospital, H-8900 Zalaegerszeg, Zrinyi M. Str. 1, Hungary

Kang Jun-Suk, MD: Department of Neurology, University of Frankfurt, Frankfurt/M, Germany

Prof Thomas Klockgether, Ludger Schöls, MD, Holger Hengel, MD: Department of Neurology, University Hospital of Bonn, Bonn, Germany and German Center for Neurodegenerative Diseases (DZNE), Bonn, Germany

Sophie Tezenas du Montcel, PhD: AP-HP, Biostatistics Unit, Groupe Hospitalier Pitié-Salpêtrière, F-75013, Paris, France

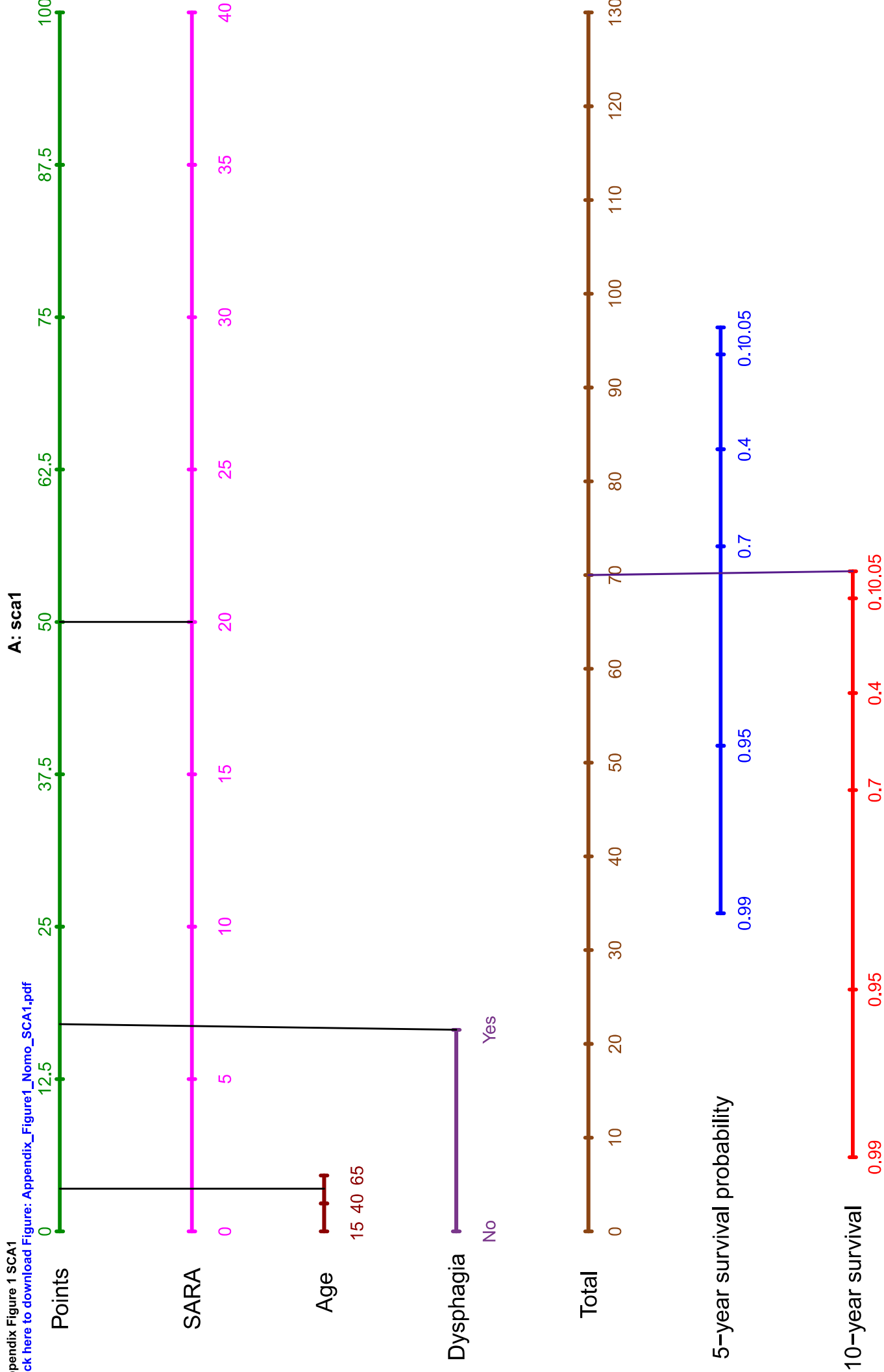
Table 6: List of the 17 participant centers.

N°	Centers	EUROSCA study group
1	London	Arron Cook, Paola Giunti, Robyn Labrum
2	Paris	Alexandra Durr, Alexis Brice, Perrine Charles, Cecilia Marelli
3	Milan	Caterina Mariotti, Lorenzo Nanetti, Marta Panzeri
4	Warsaw	Maria Rakowicz, Anna Sobanska, Anna Sulek
5	Bonn	Heike Jacobi, Thomas Klockgether, Tanja Schmitz-Hübsch
6	Tubingen	Peter Bauer, Ludger Schöls, Holger Hengel
7	Naples	Alessandro Filla, Antonella Antenora
8	Pécs	Bela Melegh
9	Santander	Jon Infante, José Berciano
10	Nijmegen	Bart P. van de Warrenburg
11	Essen	Dagmar Timmann
12	Bochum	
13	Innsbruck	Sylvia Boesch
14	Frankfurt	Kang Jun-Suk
15	Bruxelles	Massimo Pandolfo
16	GO1	
17	Aachen	Jörg B. Schulz

+ Sophie Tezenas du Montcel and Alhassane Diallo: Biostat Unit (Paris).

Appendix Figure 1 SCA1

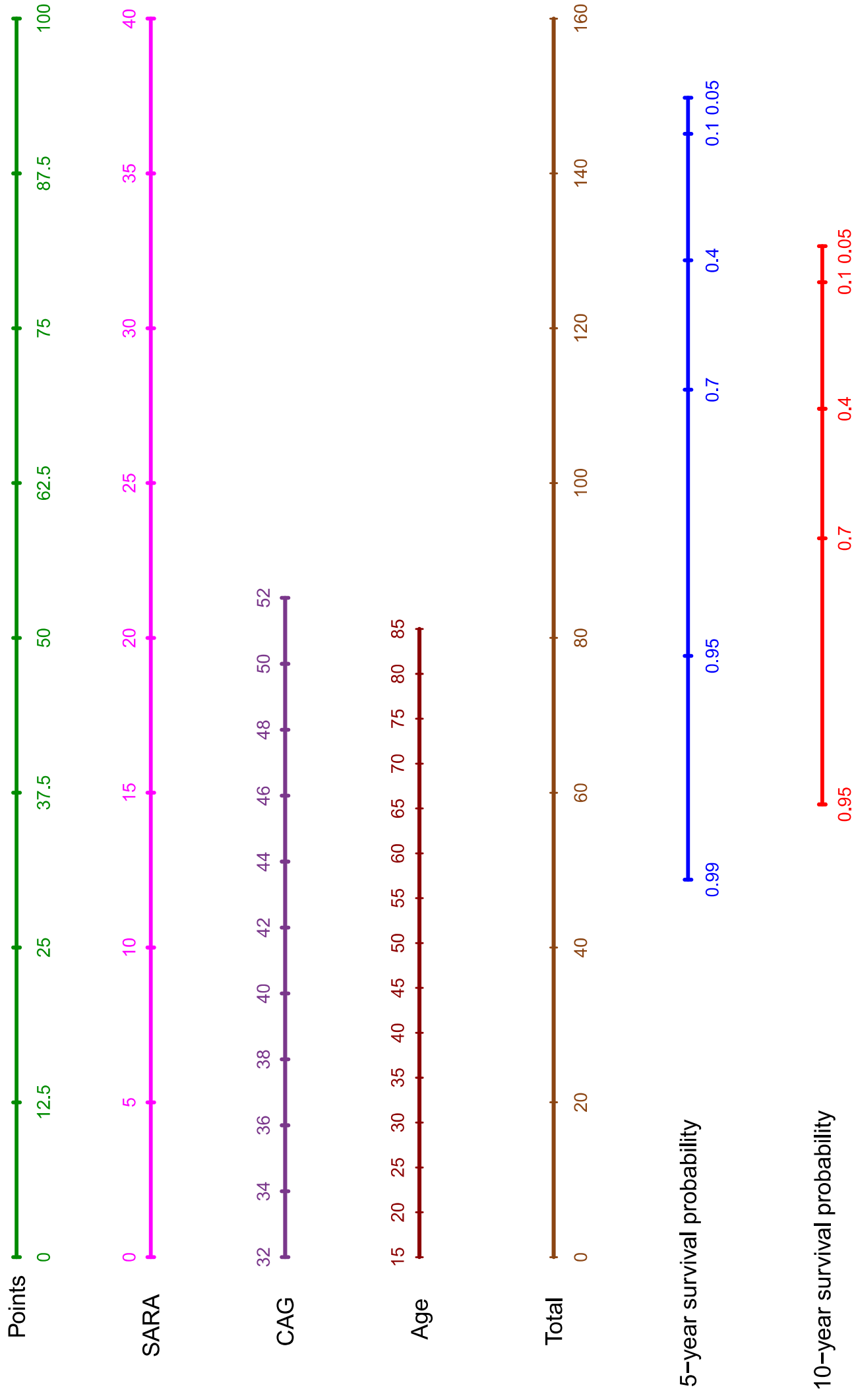
[Click here to download Appendix_Figure1_Nomo_SCA1.pdf](#)



Appendix Figure 1 SCA2

[Click here to download Figure: Appendix_Figure1_Nomo_SCA2.pdf](#)

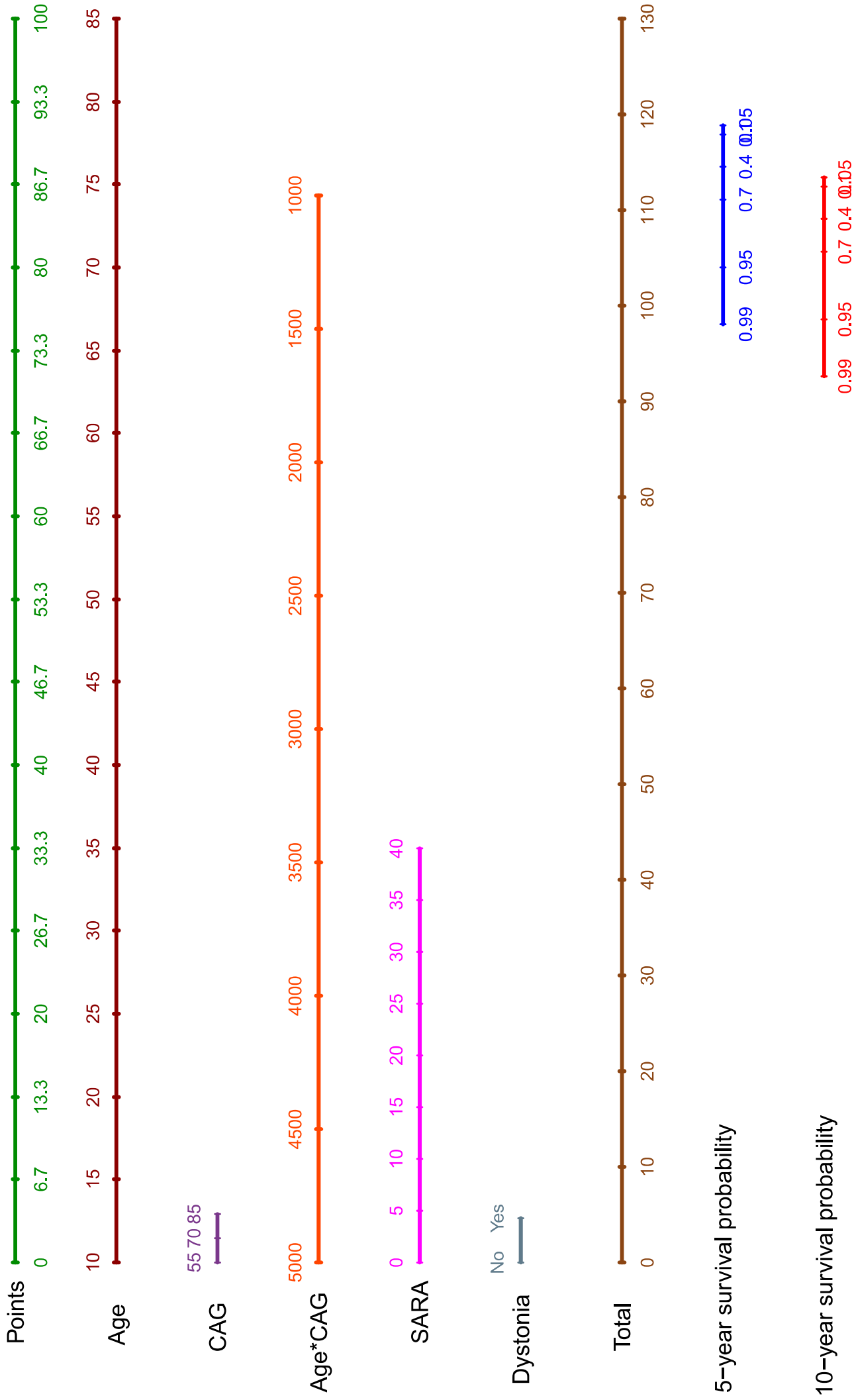
B: sca2



Appendix Figure1 SCA3

[Click here to download Figure: Appendix_Figure1_Nomo_SCA3.pdf](#)

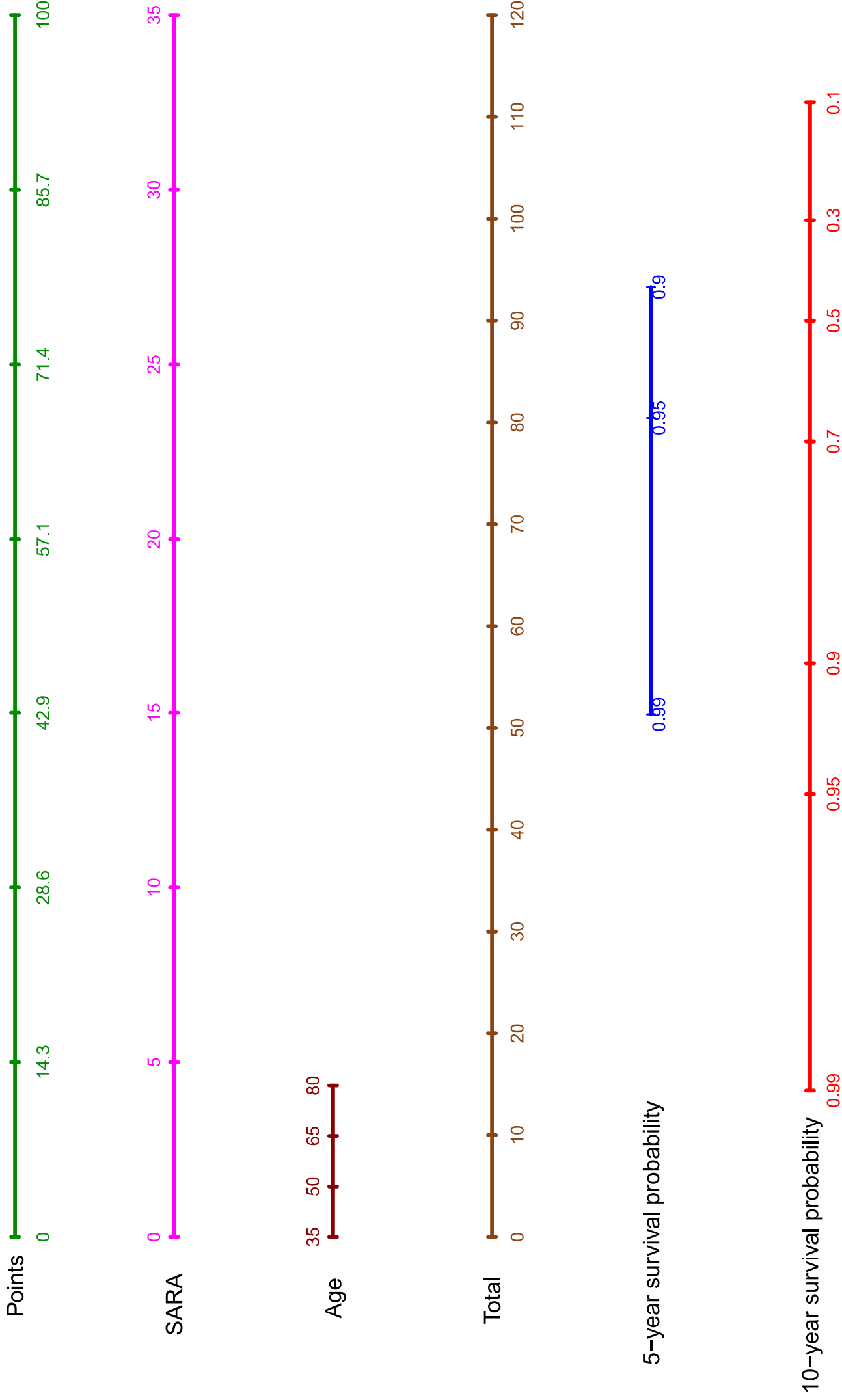
C: sca3

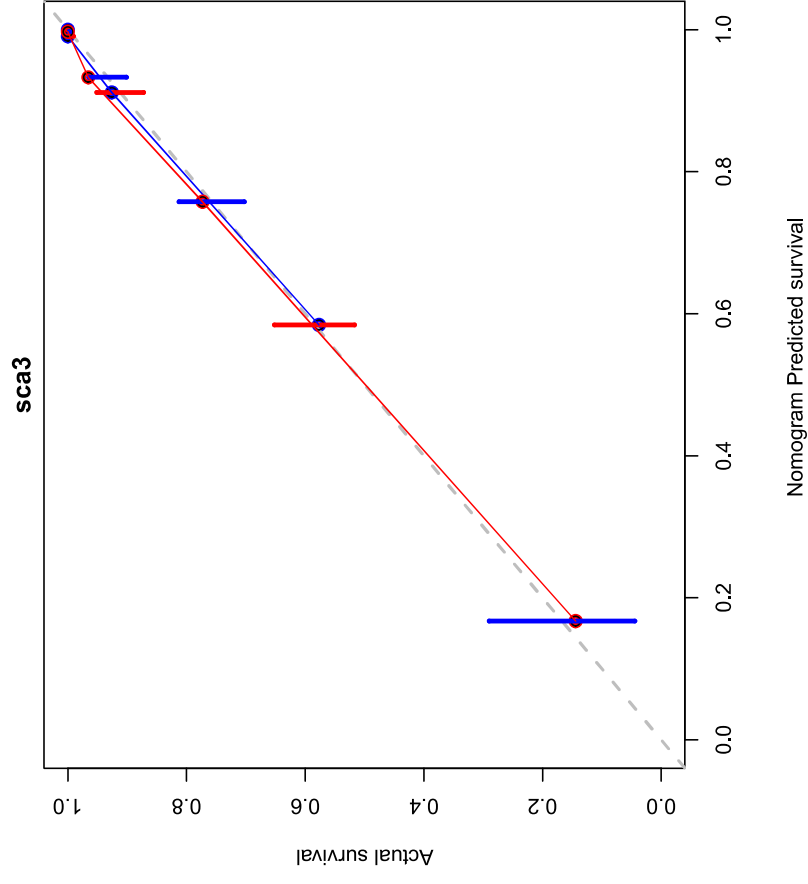
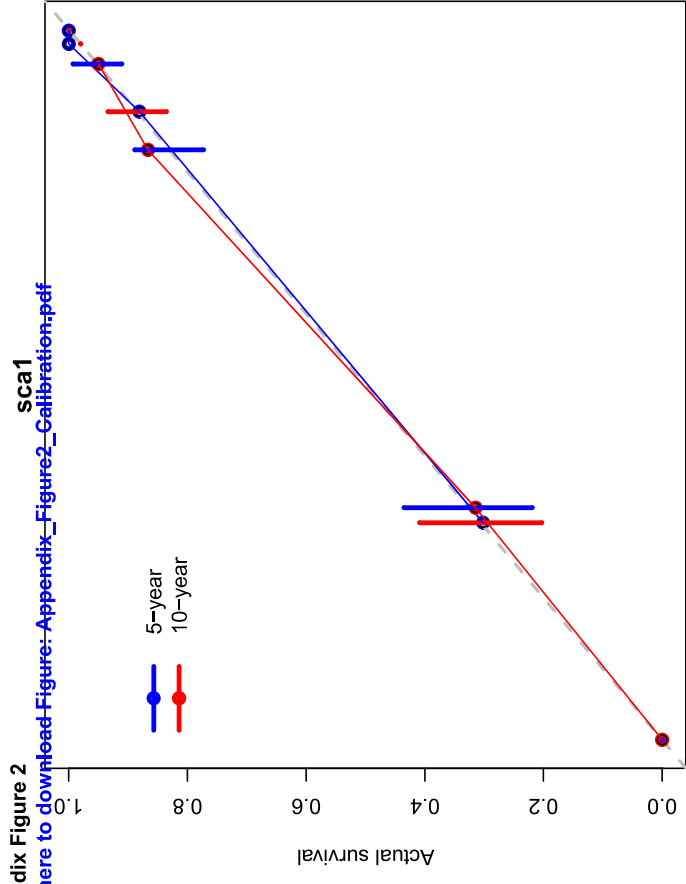
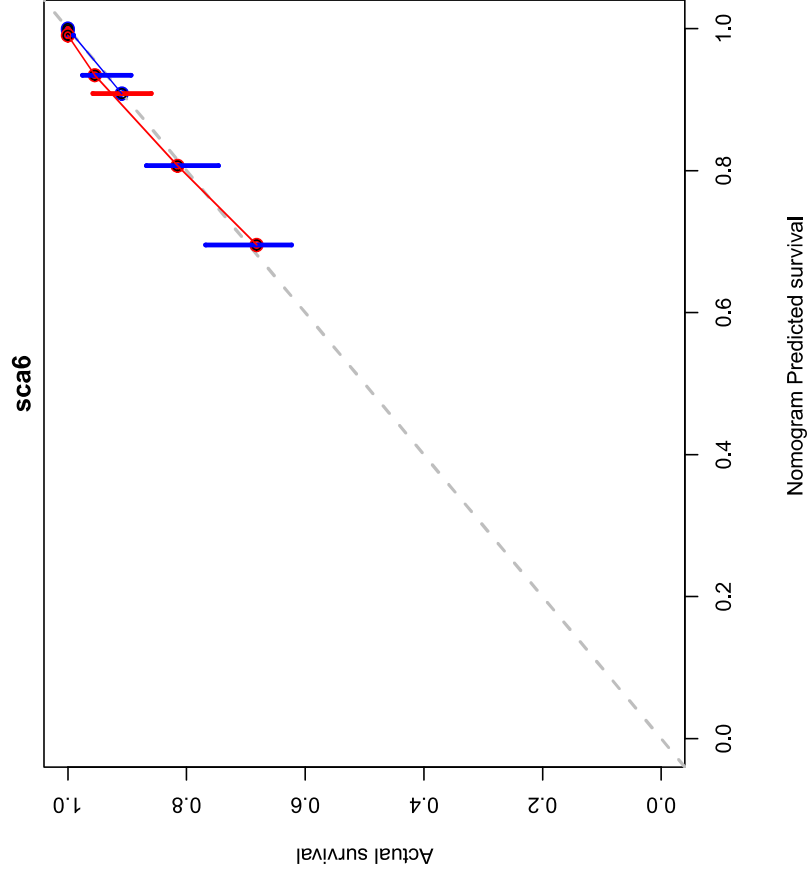
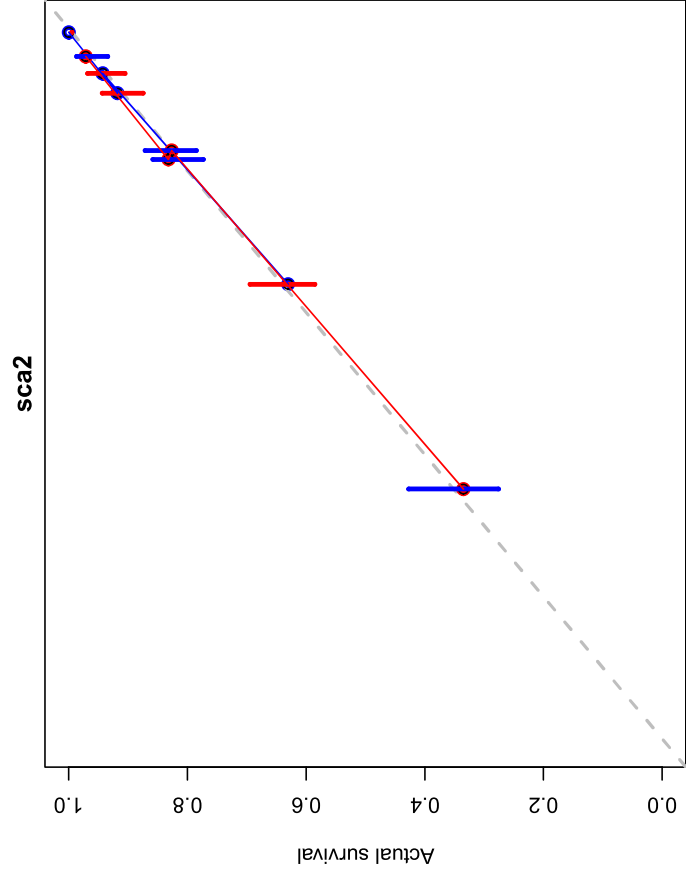


Appendix Figure 1 SCA6

[Click here to download Figure: Appendix_Figure1_Nomo_SCA6.pdf](#)

D: sca6





TRIPOD Checklist: Prediction Model Development

Section/Topic	Item	Checklist Item	Page
Title and abstract			
Title	1	Identify the study as developing and/or validating a multivariable prediction model, the target population, and the outcome to be predicted.	1, 1 st para
Abstract	2	Provide a summary of objectives, study design, setting, participants, sample size, predictors, outcome, statistical analysis, results, and conclusions.	3
Introduction			
Background and objectives	3a	Explain the medical context (including whether diagnostic or prognostic) and rationale for developing or validating the multivariable prediction model, including references to existing models.	5, 2 nd para
	3b	Specify the objectives, including whether the study describes the development or validation of the model or both.	5, 3 rd para
Methods			
Source of data	4a	Describe the study design or source of data (e.g., randomized trial, cohort, or registry data), separately for the development and validation data sets, if applicable.	6, 1 st para
	4b	Specify the key study dates, including start of accrual; end of accrual; and, if applicable, end of follow-up.	6, 1 st para
Participants	5a	Specify key elements of the study setting (e.g., primary care, secondary care, general population) including number and location of centres.	6, 1 st para
	5b	Describe eligibility criteria for participants.	6, 1 st para
	5c	Give details of treatments received, if relevant.	
Outcome	6a	Clearly define the outcome that is predicted by the prediction model, including how and when assessed.	6, 2 nd para
	6b	Report any actions to blind assessment of the outcome to be predicted.	
Predictors	7a	Clearly define all predictors used in developing or validating the multivariable prediction model, including how and when they were measured.	6, 2 nd para
	7b	Report any actions to blind assessment of predictors for the outcome and other predictors.	
Sample size	8	Explain how the study size was arrived at.	
Missing data	9	Describe how missing data were handled (e.g., complete-case analysis, single imputation, multiple imputation) with details of any imputation method.	6, 3 rd para
Statistical analysis methods	10a	Describe how predictors were handled in the analyses.	6, 3 rd para
	10b	Specify type of model, all model-building procedures (including any predictor selection), and method for internal validation.	6, 4 th para
	10d	Specify all measures used to assess model performance and, if relevant, to compare multiple models.	6, 4 th para
Risk groups	11	Provide details on how risk groups were created, if done.	6, 4 th para
Results			
Participants	13a	Describe the flow of participants through the study, including the number of participants with and without the outcome and, if applicable, a summary of the follow-up time. A diagram may be helpful.	8, 1 st para
	13b	Describe the characteristics of the participants (basic demographics, clinical features, available predictors), including the number of participants with missing data for predictors and outcome.	8, 1 st para
Model development	14a	Specify the number of participants and outcome events in each analysis.	8, 1 st para
	14b	If done, report the unadjusted association between each candidate predictor and outcome.	8, 3 rd - 6 th para
Model specification	15a	Present the full prediction model to allow predictions for individuals (i.e., all regression coefficients, and model intercept or baseline survival at a given time point).	8, 3 rd - 6 th para
	15b	Explain how to use the prediction model.	8, 7 th para
Model performance	16	Report performance measures (with CIs) for the prediction model.	9, 2 nd para
Discussion			
Limitations	18	Discuss any limitations of the study (such as nonrepresentative sample, few events per predictor, missing data).	10, 1 st , 5 th para
Interpretation	19b	Give an overall interpretation of the results, considering objectives, limitations, and results from similar studies, and other relevant evidence.	10, 1 st , 3 rd , 4 th para
Implications	20	Discuss the potential clinical use of the model and implications for future research.	10, 5 th para