



HAL
open science

A Decision Support Tool for the Selection of Promoting Actions to Encourage Collaboration in Projects for the Agriculture Sector

M. Alemany, F. Alarcón, D. Pérez, C. Guyon

► **To cite this version:**

M. Alemany, F. Alarcón, D. Pérez, C. Guyon. A Decision Support Tool for the Selection of Promoting Actions to Encourage Collaboration in Projects for the Agriculture Sector. 21th Working Conference on Virtual Enterprises (PRO-VE), Nov 2020, Valencia, Spain. pp.534-545, 10.1007/978-3-030-62412-5_44 . hal-03745819

HAL Id: hal-03745819

<https://inria.hal.science/hal-03745819>

Submitted on 4 Aug 2022

HAL is a multi-disciplinary open access archive for the deposit and dissemination of scientific research documents, whether they are published or not. The documents may come from teaching and research institutions in France or abroad, or from public or private research centers.

L'archive ouverte pluridisciplinaire **HAL**, est destinée au dépôt et à la diffusion de documents scientifiques de niveau recherche, publiés ou non, émanant des établissements d'enseignement et de recherche français ou étrangers, des laboratoires publics ou privés.



Distributed under a Creative Commons Attribution 4.0 International License



This document is the original author manuscript of a paper submitted to an IFIP conference proceedings or other IFIP publication by Springer Nature. As such, there may be some differences in the official published version of the paper. Such differences, if any, are usually due to reformatting during preparation for publication or minor corrections made by the author(s) during final proofreading of the publication manuscript.

A Decision Support Tool for the Selection of Promoting Actions to Encourage Collaboration in Projects for the Agriculture Sector

M. M. E. Alemany¹, F. Alarcón ¹, D. Pérez ¹, C. Guyon²

¹ Research Centre on Production Management and Engineering (CIGIP). Universitat Politècnica de València. Camino de Vera S/N, 46022 València, Spain; ² Bretagne Development Innovation. Ibis Route de Fougères, 35510 Cesson-Sévigne, France
{mareva, faualva, dapep}@cigip.uvp.es, c.guyon@bdi.fr

Abstract. Development and innovation agencies promote consortiums of agricultural stakeholders to collaborate in the proposal of projects for public calls. To achieve this partnerships, these agencies should select between different promoting actions to be performed with two objectives: maximize the number of project proposals presented and minimize the resources invested. To support agencies with these decisions, a computer tool based on a multi-objective integer linear programming model is proposed. To deal with the two objectives the weighting sum method is implemented. The model is validated in different scenarios by means a realistic case of an agency in Brittany (France). The results show the conflict between the two objectives considered and the dependency of the solutions on the scenarios defined. As a conclusion it can be stated that: 1) decision-makers should be careful in defining the weights of each objective and 2) the impact of the different promoting actions on the level of stakeholders' participation should be precisely estimated.

Keywords: Decision Support, Optimization, Collaboration, Project Proposals, Agriculture

1 Introduction

Many EU-funded research and innovation programmes have been developed since 1990, such as INTERREG, H2020, Intelligent Energy Europe, LIFE, etc. Others, such as Europe-Horizon (2021-27) are coming soon. Not only EU-funded but also a high number of national and regional programmes have been launched in the last three decades. These programmes aim to drive economic growth and create jobs. They do special emphasis on excellent science, industrial leadership and tackling societal challenges. The goal is to ensure Europe produces world-class science, removes barriers to innovation and makes it easier for the public and private sectors to work together in delivering innovation and collaborative work.

At the operational side, these EU, national or regional programmes may comprise one or more thematic sections, which, in turn, describe their overall objectives, the

respective calls for proposals, and the topics within each call. Besides, some general annexes describing general rules such as standard admissibility conditions and eligibility criteria, selection and award criteria are presented [1].

One of the problems that some entities face is deciding on which topic or topics from a certain call to make project proposals, since a multitude of them can be presented in each topic. Besides, these entities are often engaged in several programmes, what increases the number of calls and makes the decision-making process more complex due to the limited resources. These entities must assess then what are the inputs (resources, costs...) and outputs (benefits) of presenting projects proposals in different topics of each program call.

Among other data, they must account for the planned start and end dates of the projects (in case they are approved), some strict requirements about the number and type of partners that can participate as well as their objectives or budget.

Finally, these entities, taking into consideration all the previous issues, decide to present a certain number of project proposals, of which only some of them will be approved. These approved proposals will become firm projects and be developed within the defined terms and conditions.

The described problem may be included within what is well known in the literature as project selection problem, considered as the first essential part of project portfolio management. It consists in selecting from a large set of projects, a subset of projects to be undertaken [2].

A large amount of methods for project selection are presented in the literature, basically divided into two categories.

First ones, are based on the multi-objective nature (basically return and risk) of the problem [3]. Different techniques (quantitative and qualitative) to select projects according to these multi-objective criteria are proposed in deterministic and uncertain environments. Regarding deterministic techniques, three are considered as the most popular: analytic hierarchy process (AHP), analytic network process (ANP) and order of preference by similarity to ideal solution (TOPSIS). In stochastic scenarios researchers usually consider uncertainty in the form of fuzzy or interval data and proposed more sophisticated method for ranking projects.

Second ones are based on optimization models, based on operation research tools. Some form of mathematical programming is used to select a set of projects which deliver the maximum benefit represented by an objective function subjected to a series of constraints. They consider relationships between projects and other factors that first ones do not consider [4]. Among the major deterministic optimization models are linear and non-linear programming, integer algorithms, dynamic programming and goal programming [5]. The inclusion of the uncertainty is well described in [6], where a brief review of fuzzy mathematical programming and a comparison with stochastic programming in portfolio selection problem is conducted.

Nevertheless, most of the reviewed works only deal with R&D projects conducted by companies from different sectors or industries to innovate and introduce new products and services or to improve their existing offerings. Typical sectors that invest the most are technological [7], construction [8], energy [9]-[10], etc.

Only a few works address the project selection problem as described at the beginning of this introduction, and if so, it is usually done from the perspective of the institution that launches the calls for projects [11]-[12], as they must select, once

received the project proposals from the different entities, which projects to finance or co-finance with public or private aid.

The literature lacks work in which the project selection is made from the perspective of the agencies whose business is based on disseminating the data and interest of different calls and to encourage the creation of consortia among different partners for the development of projects proposals of which they previously know the selection procedure and criteria. The creation of consortia involves the choice of partners to carry out the projects in a collaborative network context. Selecting partner(s) for collaborative projects is the main challenge that organizations face before they can attain the advantages of collaboration [13]. Collaboration is defined in [14] as process in which entities share information, resources and responsibilities to jointly plan, implement, and evaluate a program of activities to achieve a common goal. In this task of boosting collaborative networks for projects development, even less, research has been done to support these agencies to decide about what types of actions to be done in order to promote project proposals of different partners.

Partially related to this, only a research stream that addresses the partners' selection problem have been found in the literature. [15] develop a conceptual model indicating how an organization should choose the right partners for a set of projects. [16] present an explorative empirical study that shows the steps in the partner selection process. [17] formulates a multicriteria best value source selection methodology for public-private partnerships projects. But these studies neither include optimization models based on mathematical programming nor with the characteristics addressed in the problem under study.

To fill the above gap, in this paper a multi-objective integer linear programming (ILP) model for project selection in this specific scenario is proposed. The main contribution of this paper is to address the project selection problem not from the perspective of the institution that launches the calls for projects but from the perspective of agencies boosting the creation of collaborative networks. These agencies should select the investment in promoting actions to establish consortia among supply chain stakeholders for project proposals. Additionally, the selection of stakeholders (partners) at each supply chain stage to create collaborative networks to participate in different projects proposals presented at each call should be made. In doing so, it is necessary to consider different constraints related to the potential participation of stakeholders in calls based on their previous knowledge and expertise, the maximum number of projects in which each stakeholder can simultaneously participate at each period and the available capacity of the resources to carry out the marketing actions by the agency. In doing so, besides the traditional objective of maximizing the number of projects proposals presented, the resources allocated by the agency to the promoting actions is aimed also to be minimized. These marketing actions are crucial to encourage different companies to be engaged in different partnerships and therefore presenting project proposals.

The rest of the paper is arranged as follows. Section 2 describes the problem being studied, as is the case of an agency that supports and encourages the implementation of projects of different nature. In Section 3, a deterministic ILP model to solve the problem is presented. Section 4 reports its application to a realistic case based on

different scenarios that validate the model. Finally, some conclusions and future research lines are drawn in Section 5.

2 Problem Description

The configuration of the agricultural supply chain under study is assumed to be composed by three stages (see Fig. 1):

- The stage 1 corresponds to the experimental laboratories that test and evaluate the technology developed by the technology manufacturers.
- The stage 2 is integrated by manufacturers of the technology for the agricultural companies
- The stage 3 makes reference to the agricultural companies.

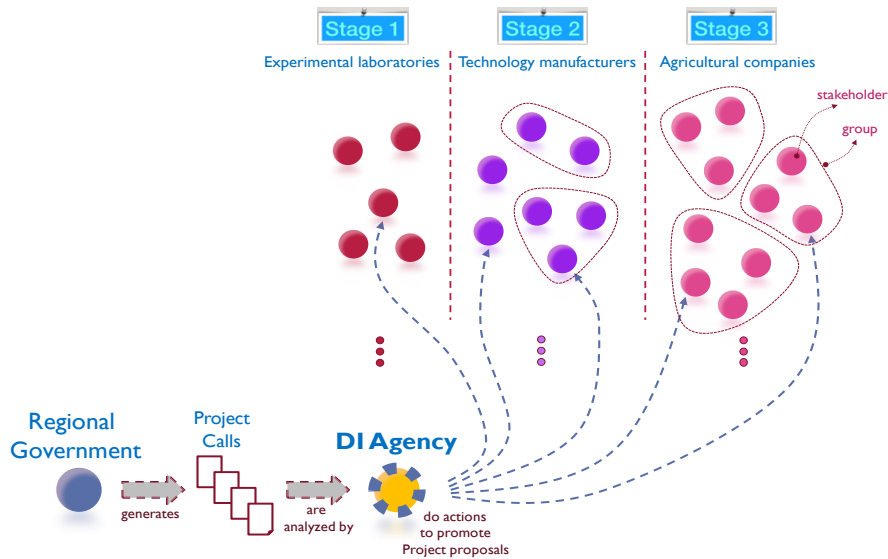


Fig. 1. Configuration of the agricultural supply chain.

In addition, there is an agency dedicated to promote development and innovation projects in the region. This agency, usually of governmental character, promotes collaboration among stakeholders of the different stages to encourage the consortia development to present as many project proposals as possible. These projects respond to regional calls that specify:

- A start and end date for the presentation of project proposals,
- A topic, which may generate more or less interest among stakeholders of different stages of the supply chain and fit in a lesser or greater extent the skills and previous experiences of the stakeholders,
- Economic endowment, which make the call for companies more or less attractive.

Due to the budget limitations, for each call a limited number of projects can be presented. To ensure that a project proposal has some possibility of being accepted in a specific call a minimum number of stakeholders of the different stages is required. Besides, a maximum number is desirable in order to apply for several projects in the same call. Indeed, the consortia for each project can be made up of any number of companies at the third stage, combined or not with suppliers at the first or second stage. Nevertheless, if there are stakeholders at the first stage in the consortium, there may also be a variable number of stakeholders belonging to the second stage. Stakeholders of the same stage that are interested in the same project calls will integrate a group of interest. Because regional calls can be overlapped during different time periods along the year, it is assumed that each group of stakeholders can work simultaneously in the preparation of a limited number of project proposals.

In order to encourage the creation of projects, the agency dedicated to the innovation and development, designs actions, plans them, carries them out, evaluates the results of the actions according to the number of projects proposals presented and calculates the costs of these actions so that it is possible to know in which actions there is a greater probability of success in relation to costs. These actions are aimed at disseminating the data and interest of each regional call and at encouraging the creation of consortiums for the development of projects. If the actions succeed in arousing the interest of the stakeholders these are associated in one or several consortiums and propose one or several projects respectively. These actions include the simple sending of an e-mail (low consumption of resources) until the organization of conferences, stakeholder meeting days (high consumption of resources), etc. So the agency is interested in knowing the actions to be done during each period of the year in order to achieve the maximum number of project proposal presented while also taking into account the resources invested.

3 Mathematical Model Formulation

The notation of the integer programming model used to support the Agency decision about the number of action types to be performed on each group of stakeholders belonging to the different stages for each project call is presented in Tables 1 to 3.

Table 1. Nomenclature: indexes and sets.

Indexes	Sets
s Stage of the agriculture supply chain	G_s Group of stakeholders g in stage s
g Group of stakeholders with the same interests	
j Project call	J_g Projects calls j of interest for a group of stakeholders g
p Proposal of projects to be presented	
a Promotion action type of the agency	
t Time period	P_j Group of projects p that can be proposed in a project call j
r Resource type of the agency	

Table 2. Nomenclature: parameters

Parameters	
ns_g	Number of stakeholders belonging to group g
nj_g	Number of projects in which the stakeholders of group g can simultaneously work
nsm_{js}	Minimum number of stakeholders of stage s required to participate in a project call j
$nsmax_{js}$	Maximum number of stakeholders of stage s allowed to participate in a project call j
$npmax_j$	Maximum number of projects that can be presented for the project call j
ia_{agj}	Impact of one action type a on a group of stakeholders g expressed as the percentage of the number of stakeholders in the group g that will be interested in participating in the project call j .
$cons_{rajt}$	Consumption of resource type r of the agency in doing action type a for the project call j in t
cap_{rt}	Available capacity of resource r during the time period t
δ_{jt}	Parameter with a value of 1 if the time period for presenting proposals to project call j include period t and 0 otherwise

Table 3. Nomenclature: decision variables

Decision Variables	
N_{sgjp}	Number of stakeholders in stage s of group g participating in project p of call j
Y_{sjp}	Binary variable with a value of 1 if some stakeholder of stage s participate in project p of call j
Y_{jp}	Binary variable with a value of 1 if project p is presented in project call j and 0 otherwise
YA_{asgj}	Binary variable with a value of 1 if action type a is performed in the group of stakeholders g of stage s for the project call j and 0 otherwise
YAT_a	Total number of type action a carried out by the agency

Different objectives are pursued when assigning the number of each action type to the different projects. The first one aims to maximize the number of projects proposals presented for all the project calls triggered during the horizon (1). The second one, aims to minimize the quantity of resources invested in these actions (2).

$$Max[Z1] = \sum_j \sum_{p \in P_j} YP_{jp} \tag{1}$$

$$Min[Z2] = \sum_r \sum_a \sum_s \sum_{g \in G_s} \sum_{j \in J_g} \sum_{t \in T_j} cons_{rajt} YA_{asgj} \tag{2}$$

Both objectives are combined by means of the weighting sum method. In order to scale these objectives, each one is divided by their maximum value. This ensures that they both move in the range [0, 1]. The maximum value can be obtained by maximizing only one objective at a time. The weights $w1$ and $w2$ represent the importance provided by the decision-maker to each objective in such a way that the more important the objective, the greater the weight assigned. It is noteworthy that the following relationship always apply: $w1+w2=1$.

$$Max[Z] = w1 \frac{Z1}{Z1max} - w2 \frac{Z2}{Z2max} \quad (3)$$

The following constraints should be respected. Each project proposal p of a certain call j requires a minimum (4) and a maximum (5) number of stakeholders of each stage in case this project is finally presented.

$$nsm_{js} \cdot YP_{jp} \leq \sum_{g \in G_s} N_{sgjp} \quad \forall s, j, p \in P_j \quad (4)$$

$$\sum_{g \in G_s} N_{sgjp} \leq nsmax_{js} \cdot YP_{jp} \quad \forall s, j, p \in P_j \quad (5)$$

The total number of stakeholders of each group at each stage participating in a specific call j should be no higher than the expected impact on each group of stakeholders produced by the action carried out (6).

$$\sum_{p \in P_j} N_{sgpj} \leq \sum_a (ia_{agj} \cdot ns_g \cdot YA_{asgj}) \quad \forall s, g \in G_s, j \in J_g \quad (6)$$

Constraints (7) calculate the total number of each type action a to be performed by the agency.

$$YAT_a = \sum_s \sum_{g \in G_s} \sum_{j \in J_g} YA_{asgj} \quad \forall a \quad (7)$$

Constraints (8) and (9) establish the relationship between the number of stakeholders interested to participate in a project p of a certain call j and the binary variable indicating if some stakeholder of stage s participate in the corresponding project p .

$$\sum_{g \in G_s} N_{sgjp} \leq M \cdot Y_{sjp} \quad \forall s, j, p \in P_j \quad (8)$$

$$Y_{sjp} \leq \sum_{g \in G_s} N_{sgjp} \quad \forall s, j, p \in P_j \quad (9)$$

Constraints (10) and (11) ensure that a project proposal p should be presented only if there are stakeholders interested on it. Through constraints (12) the maximum number of project proposals that can be presented in a call is respected.

$$Y_{sjp} \leq YP_{jp} \quad \forall s, j, p \in P_j \quad (10)$$

$$Y_{P_{jp}} \leq \sum_s Y_{sjp} \quad \forall j, p \in P_j \quad (11)$$

$$\sum_{p \in P_j} Y_{P_{jp}} \leq npmax_j \quad \forall j \quad (12)$$

It has no sense that stakeholders of the first stage participate in a project proposal if there are no stakeholders of the second stage. Because the laboratories participation only has sense if there are some technological stakeholder that need to do experimentation with the technology. Constraints (13) ensure this aspect.

$$Y_{1jp} \leq Y_{2jp} \quad \forall j, p \in P_j \quad (13)$$

Through constraints (14) it is not allowed to exceed the number of simultaneous projects that one stakeholder of a group is able to attend.

$$\sum_j \sum_{p \in P_j} N_{sgjp} \cdot \delta_{jt} \leq njg \cdot ns_g \quad \forall s, g \in G_s, t \quad (14)$$

At each time period, the consumed quantity of each resource by all the promoting actions implemented should not be greater than the available capacity of this resource in this time period (15).

$$\sum_a \sum_j cons_{raj} \cdot \delta_{jt} \cdot YA_{aj} \leq cap_{rt} \quad \forall r, t \quad (15)$$

The nature of the different decision variables is declared by means of the constraints (16).

$$\begin{array}{ll} N_{sgjp}, YAT_a \geq 0, & Integer \\ Y_{sjp}, Y_{P_{jp}}, YA_{asgj} & Binary \end{array} \quad (16)$$

4 Implementation and Validation: Application to a Development and Innovation Agency in Brittany

The model was implemented in MPL® 5.0.8 and solved by using the solver Gurobi™ 8.1.1 in a computer with an Intel® Xeon® CPU E5-1620 v2(C) @3.70GHz processor, with an installed capacity of 35GB and a 64-bits operating system. Microsoft Access Database was used to store input data and results.

The above MILP model has been validated through a data set inspired in the case of a Development and Innovation Agency in Brittany that interact with stakeholders of the three stages indicated in Fig 1. It is assumed to be 15 groups of stakeholders: 5 groups in stage 1 with 10 members each one, 4 groups in stage 2 with 10 members

each one, and 6 groups in stage 3 with 30 members each. The number of projects in which stakeholders can be simultaneously working are 3 for group 1, 5 for group 2 and 6 for group 3. It is assumed to be 7 project calls with a maximum of 4 projects to be presented per call. The open period for presenting each project call expressed in months can be seen in Fig 2 from which the δ_{jt} parameter can be defined. The minimum and maximum number of stakeholders for each stage and project call are: for stage 1, 0 and 7, for stage 2, 2 and 12 and for stage 3, 15 and 40, respectively.

It is assumed the Agency has 2 limited resources: money and personnel time work. The agency can implement 5 types of actions: 1) send an e-mail with information about the project call, 2) to send a triptych, 3) to make a call phone, 4) to develop a stakeholder meeting days and 5) to visit the stakeholders. Each action type consumes a different quantity of both types of resources and has a certain impact as regards the stakeholders attracted to participate in different project call. They are defined in a way that the greater the impact of an action type the greater the resources consumption.

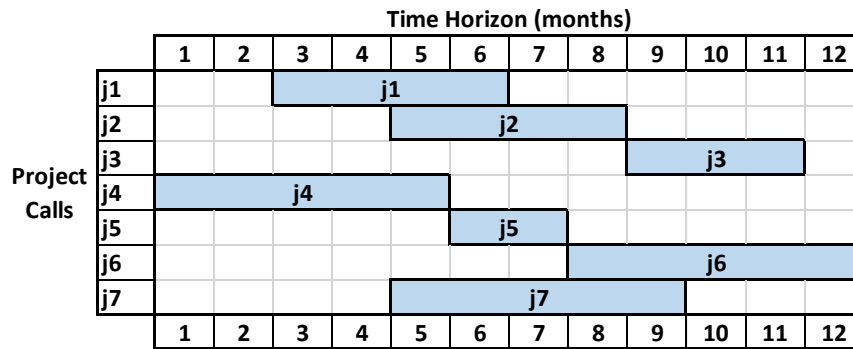


Fig. 2. Time period for presenting project proposals of each call (months).

In order to validate the MILP model proposed, we have assigned different weights to each objective function. This allows us to analyze the impact of these weights on the solutions obtained. In this case, only the money has been considered as the resource to be minimized (Z2) and only the personnel time work has been considered in constraints (14). Besides in order to analyze the model sensitivity to the impact of each action type ia_{agj} , three scenarios have been defined (Table 4).

Table 4. Value of the action impact (ia_{agj}) per action type and scenario.

Action Type	Base Scenario	Scenario 1	Scenario 2
1	0,025	0,030	0,020
2	0,030	0,035	0,030
3	0,040	0,045	0,100
4	0,850	0,800	0,900
5	0,600	0,400	0,300

Results of the different weights combination as regards the two objective function can be consulted in (Fig. 3) for the three scenarios defined. As it can be observed in all three scenarios the number of projects presented and the investment diminish when the weight assigned to the Z1 decreases showing they are in conflict. It can be seen that to provide some weight to the Z2 (w_2) inside the interval $[0.1, 0.3]$ considerably decreases the amount of money invested by the Agency, while the number of projects presented practically remains the same. On the opposite, if the weight assigned to Z2 is higher than 0.6 ($w_2 > 0.6$) the number of projects presented considerably decreases being practically null in the interval $0.7 \leq w_2 \leq 1$, as it was expected.

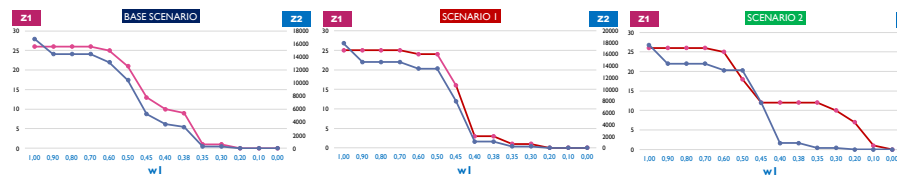


Fig. 3. Value of Z1 and Z2 for each scenario under different weights for the objective functions.

It is noteworthy that for each scenario there is a critical combination of weights around in the middle ($w_1=0.5$ and $w_2=0.5$) where a little variation of weights originates high differences in the projects presented. Therefore, this aspect should be taken into account when defining the weights of each objective. From the different type of actions selected in each scenario, it can be deduced the importance of properly estimating the value of the impact of each action type (ia_{agj}).

Table 5. N° of each action type for different objective function weights and scenario

w1	w2	BASE SCENARIO					SCENARIO 1					SCENARIO 2				
		YAT(1)	YAT(2)	YAT(3)	YAT(4)	YAT(5)	YAT(1)	YAT(2)	YAT(3)	YAT(4)	YAT(5)	YAT(1)	YAT(2)	YAT(3)	YAT(4)	YAT(5)
1,00	0,00	43	29	47	5	18	42	32	46	14	6	9	7	51	17	5
0,90	0,10	36	22	50	1	21	39	14	43	14	4	0	0	40	15	0
0,80	0,20	36	22	50	1	21	39	14	43	14	4	0	0	40	15	0
0,70	0,30	36	22	50	1	21	39	14	43	14	4	0	0	40	15	0
0,60	0,40	31	13	40	1	21	20	0	28	14	6	0	0	57	11	3
0,50	0,50	17	6	34	2	16	20	0	28	14	6	0	0	52	6	1
0,45	0,55	16	0	21	0	10	10	0	14	8	4	4	4	60	1	0
0,40	0,60	12	0	16	0	7	18	5	22	0	0	4	4	60	1	0
0,38	0,62	21	3	21	0	5	18	5	22	0	0	4	4	60	1	0
0,35	0,65	6	1	6	0	0	5	1	7	0	0	4	4	60	1	0
0,30	0,70	6	1	6	0	0	5	1	7	0	0	0	0	52	1	0
0,20	0,80	0	0	0	0	0	0	0	0	0	0	0	0	48	0	0
0,10	0,90	0	0	0	0	0	0	0	0	0	0	0	0	5	0	0
0,00	1,00	0	0	0	0	0	0	0	0	0	0	0	0	0	0	0

5 Conclusions and Future Research Lines

In this paper a decision support tool based on an ILP model has been developed to assist innovation agencies in deciding the type of actions to promote project proposals in the agricultural sector. The model has been validated through its application to a

realistic case inspired on a Development and Innovation Agency in Brittany. From the results obtained it can be concluded that the two objectives considered in the model are in conflict. Therefore, it seems to be reasonable consider both them. Even more, for all scenarios, it is observed that assign even a low weight to the second objective can substantially diminish the money investment with a very small variation in the number of project proposals. Therefore, it is recommended to follow this practice. On the other hand, the results of the model are highly dependent on the impact of each action type, so this parameter should be defined as precisely as possible. Along these lines, future research lines are devised to include the modelling of uncertainty in some parameters such as the impact of action types.

Acknowledgments. The authors acknowledge the support of the project 691249, RUCAPS: “Enhancing and implementing knowledge based ICT solutions within high risk and uncertain conditions for agriculture production systems”, funded by the European Union’s research and innovation programme under the H2020 Marie Skłodowska-Curie Actions.

References

1. European Commission Funded Programs, <https://ec.europa.eu/programmes/horizon2020>
2. Zoie, C., Radulescu, M.: Decision Analysis for the Project Selection Problem Under Risk, IFAC Proceedings Volumes. 34 (8), 445–450 (2001)
3. Sadi-Nezhad, S.: A state-of-art survey on project selection using MCDM techniques. *J. Project Manage.* 2, 1–10 (2017)
4. Caballero, H.C., Chopra, S., Schmidt, E.K.: Project portfolio selection using mathematical programming and optimization methods. Paper presented at PMI® Global Congress 2012—North America, Vancouver, British Columbia, Canada. Newtown Square, PA: Project Management Institute. (2012)
5. Ahmad, B., Haq, I.: Project Selection Techniques, Relevance & Applications in Pakistan. *Int. J. Technol. Res.* 4, 52–60 (2016)
6. Inuiguchi, M., Ramík, J.: Possibilistic linear programming: a brief review of fuzzy mathematical programming and a comparison with stochastic programming in portfolio selection problem, *Fuzzy Sets Syst.* 111(1), 3–28 (2000)
7. Stewart, R., Mohamed, S.: IT/IS projects selection using multi-criteria utility theory, *Log. Inf. Manage.* 15(4), 254–270 (2002)
8. Alzober, W., Yaakub, A.R.: Integrated model for MCDM: Selection contractor in Malaysian construction industry. In *Applied Mechanics and Materials* 548, pp.1587–1595). Trans Tech Publications. (2014)
9. Adhikary, P., Roy, P.K., Mazumdar, A.: Optimal renewable energy project selection: A multi-criteria optimization technique approach. *Global J. Pure Appl. Math.* 11(5), 3319–3329 (2015)
10. Strang, K.D.: Portfolio selection methodology for a nuclear project. *Project Manage. J.* 42(2), 81–93 (2011)
11. Benjamin, C.O.: A linear goal-programming model for public-sector project selection. *J. Oper. Res. Soc.* 13–23. (1985)
12. Coronado, J.R., Pardo-Mora, E.M., Valero, M.: A Multi-objective model for selection of projects to finance new enterprise SMEs in Colombia. *J. Ind. Eng. Manage.* 4(3), 407–417 (2011)

13. Mat, N.A.C., Cheung, Y.: Partner selection: criteria for successful collaborative network. In: 20th Australian Conference on Information Systems, 631--641 (2009)
14. Camarinha-Matos L.M., Afsarmanesh H.: Collaborative Networks. Value creation in a knowledge society in International Federation for Information Processing (IFIP), Volume 207, Knowledge Enterprise: Intelligent Strategies In K. Wang, Kovacs G., Wozny M., Fang M. (eds), 26--40. Springer, Boston (2006). https://doi.org/10.1007/0-387-34403-9_4
15. Paixão, M., Sbragia, R., Kruglianskas, I.: Factors for selecting partners in innovation projects – evidences from alliances in the brazilian petrochemical leader. *Rev. Admin. Innov. São Paulo*, 11(2), 241--272 (2014)
16. Duysters, D., Duysters, G., de Man, A.P.: The partner selection process: Steps, effectiveness, governance. *Ann. Hematol.* 2, 7--25 (2011)
17. Zhang, X.: Criteria for Selecting the Private-Sector Partner in Public-Private Partnerships. *J. Constr. Eng. Manage.* 131(6), 631--644 (2005)