



**HAL**  
open science

# Assessing the Impact of Pumpkins Plantation, Harvest and Storage Decisions on a Collaborative Supply Chain with Data Analysis Tools

David Pérez, Maria De Los Ángeles Rodríguez, Ángel Ortiz, Cécile Guyon

## ► To cite this version:

David Pérez, Maria De Los Ángeles Rodríguez, Ángel Ortiz, Cécile Guyon. Assessing the Impact of Pumpkins Plantation, Harvest and Storage Decisions on a Collaborative Supply Chain with Data Analysis Tools. 21th Working Conference on Virtual Enterprises (PRO-VE), Nov 2020, Valencia, Spain. pp.511-523, 10.1007/978-3-030-62412-5\_42 . hal-03745798

HAL Id: hal-03745798

<https://inria.hal.science/hal-03745798v1>

Submitted on 4 Aug 2022

**HAL** is a multi-disciplinary open access archive for the deposit and dissemination of scientific research documents, whether they are published or not. The documents may come from teaching and research institutions in France or abroad, or from public or private research centers.

L'archive ouverte pluridisciplinaire **HAL**, est destinée au dépôt et à la diffusion de documents scientifiques de niveau recherche, publiés ou non, émanant des établissements d'enseignement et de recherche français ou étrangers, des laboratoires publics ou privés.



Distributed under a Creative Commons Attribution 4.0 International License



This document is the original author manuscript of a paper submitted to an IFIP conference proceedings or other IFIP publication by Springer Nature. As such, there may be some differences in the official published version of the paper. Such differences, if any, are usually due to reformatting during preparation for publication or minor corrections made by the author(s) during final proofreading of the publication manuscript.

# Assessing the Impact of Pumpkins Plantation, Harvest and Storage Decisions on a Collaborative Supply Chain with Data Analysis Tools

David Pérez<sup>1</sup>, Maria de los Ángeles Rodríguez <sup>1</sup>, Ángel Ortiz <sup>1</sup>, Cécile Guyon<sup>2</sup>

<sup>1</sup> Research Centre on Production Management and Engineering (CIGIP).

Universitat Politècnica de València. Camino de Vera S/N, 46022 València, Spain;

<sup>2</sup> Bretagne Développement Innovation. Ibis Route de Fougères, 35510 Cesson-Sévigne, France

<sup>1</sup>{dapepe, marodriguez, aortiz}@cigip.uvp.es, <sup>2</sup>c.guyon@bdi.fr

**Abstract.** Successful pumpkins production requires the use of varieties that jointly with other factors yield well and produce pumpkins of the size, shape, color, and quality demanded by the market. But not only these issues are important. The perishable nature of pumpkins makes other issues such as how to prevent deterioration after harvest to become also relevant. In this paper the pumpkins plantation, harvest and storage (PHS) process is described and how some decisions affect certain goals, such as yield or conservation time. Additionally, some decision-making insights in a supply chain collaborative scenario made up of two stages: plantation/harvest and storage are given, where yield and conservation time trade-offs are outlined to develop win-win strategies. A real case using data analysis tools is analyzed. Results provide guidelines not only to make decisions independently on each stage but also to collaboratively work.

**Keywords:** Pumpkins, Plantation Harvest and Storage Process, Collaborative Decision-Making, Yield-Conservation Time Tradeoff, Data Analysis Tools.

## 1 Introduction

The term agri-food supply chain (ASC) has been associated to describe the activities from production to distribution that bring agricultural or horticultural products from the farm to the folk [1]. One of these ASC's is the pumpkins SC. Different activities throughout this SC are carried out by different actors (producers, processors and distributors) from upstream to downstream.

This paper focuses on upstream the pumpkins SC and particularly in the plantation, harvest and storage (PHP) process. Later, pumpkins would be processed or just distributed to the market.

PHP decision-making is not an easy task, since some peculiar issues (that differentiate it from other types of SC's) must be considered [2] such as the limited pumpkins shelf-life and the importance that consumers give to aspects such as quality, size and health.

Other inherent characteristics are the high levels of uncertainty these ASC should face mainly due to weather unexpected variations [3].

PHP decision-making aims, among others, to optimize different objectives such as the optimization of production yield [4], some physical characteristics or some nutrients level [5]. Another important objective is the maximization of the conservation time while keeping certain levels of the former characteristics and nutrients during storage (either in a warehouse or stored when transported) [6].

Many producers only focus on maximizing yield. This may in turn have consequences not only in terms of environmental or social impacts [7], but also downstream the pumpkins SC, since conservation time during storage can be affected, especially when the time to market is high.

Literature lacks works where the compatibility of yield and conservation time maximizing strategies is analyzed [8]. While yield-maximizing policies result in higher benefits from producers side, they are not optimal in a multi-objective context where other objectives such as conservation time after must be taken into account.

This paper makes then two main contributions:

First, the pumpkins plantation, harvest and storage (PHS) process is characterized, describing the decisions that are made as well as how they affect certain objectives, such as yield or conservation time.

Secondly, some decision-making insights in a supply chain collaborative scenario made up of two stages: plantation/harvest and storage are given, where yield and conservation time trade-offs are outlined to develop win-win strategies. A real case using data analysis tools is analysed. Results provide guidelines not only to make decisions independently on each stage but also to collaboratively work.

The paper is structured as follows: In Chapter 2, a review about the main decisions, objectives and uncertainty sources that characterize the pumpkins PHS process is conducted. Chapter 3 analyzes the PHS decision-making process and how certain decisions can affect various objectives such as yield or conservation time, either from an independent or collaborative perspective, by also reviewing some works. In Chapter 4 a real two-stage SC is analysed by assessing the impact of certain specific PHS decisions on each stage and the whole SC by means of data analysis tools. Finally, in Chapter 5 some conclusions are drawn.

## 2 Pumpkins Plantation, Harvest and Storage (PHS) Process

This paper aims first to characterize the PHS decision-making process. A literature review was first conducted.

Among others, some of the consulted works were [9]-[13].

Tables 1 to 4 show what are the main decisions that are made throughout the PHS process as well as their scope, that is, which are their usual values ranges.

The PHP process was splitted into four sub-processes: pre-plantation (Table 1), plantation (Table 2), harvest (Table 3) and storage (Table 4).

**Table 1.** Main pre-plantation decisions types & scopes in the pumpkins PHS process

<b>Decision Types</b>	<b>Decision Scope</b>
Place	Pumpkin plants grow faster in hot climates than cold ones
Date	Between late may and mid of july
Crop Type	Very rich soils with good drainage and not too soggy and with a lot of space for sprawling vines
Crop Temperature	Before sowing seeds the plant soil must be at least 70°F
Seeds Variety	It is important to choose the right pumpkin seeds. There are many different varieties of pumpkins and each of them have different characteristics
Method	Seeds planted directly in the ground or transplanted
Compost Use	It is advisable to dig large holes and fill them with a compost mixture one week before planting.

**Table 2.** Main plantation decisions types & scopes in the pumpkins PHS process

<b>Decision Types</b>	<b>Decision Scope</b>
Mulching	Row covers of different materials to protect plants and to prevent insect problems must be used. They must be removed before flowering to allow pollination.
Fertilization	Pumpkins must be fertilized regularly. Adding fertilizer encourages healthy plant growth. A high in nitrogen formula could be used just before vines begin to run and a high in phosphorous one just before the blooming period.
Irrigation	Pumpkins need lots of water (at least one inch per week). The amount of water must be decreased when the pumpkins begin to grow and turn orange. Besides, watering must be removed about a week before the planned harvest.
Protection	If insecticides, fungicides, or herbicides must be applied against pests, it must be taken into account that bees are essential for pollination and can be killed. If necessary, an organic pesticide to rid the plants out of pests must be used.
Pruning	Pruning the vines may help with space and allow the plant's energy to be focused on the other vines and fruits.
Fruit Turning	As the fruit develops, they should be turned (with great care not to hurt the vine) to encourage an even shape. A thin board or heavy cardboard under ripening pumpkins must be placed to avoid decay and insect damage.

**Table 3.** Main harvest decisions types & scopes in the pumpkins PHS process

<b>Decision Types</b>	<b>Decision Scope</b>
Date	Pumpkins must be harvested when they are mature. It typically takes 95 to 120 days. The measurement of some inputs may indicate the ripening degree: dry matter, firmness, peduncle characteristics, colour and quantity of sugar.
Method	The fruit must be cut off the vine carefully, without tearing. A liberal amount of stem will increase the pumpkin's keeping time and prevent early rotting.
Curing Period	In normal conditions, pumpkins should be cured in the sun for about a week to toughen the skin. Early frost and cold rainy weather call for early harvest. If so, pumpkins must be cured for 10 days in an area with T <sup>a</sup> between 27-29 C.

**Table 4.** Main storage decisions types & scopes in the pumpkins PHS process

Decision Types	Decision Scope
Washing/ Brushing	Pumpkins are usually washed and kept dry before being stored. A good practice consists in wiping them down with a weak bleach solution to discourage rot.
Storage Conditions	Pumpkins must be stored in a cool and dry place. They must be kept away from humidity, damp, and direct sunlight. No refrigeration is needed. Temperatures between 10 and 16 °C are ideal.
Storage Type	The pumpkins can be set in a single layer on bales of hay, cardboard or wooden shelves. They can also be hanged in mesh produce sacks. They must not be stored on concrete since it leads to rot.
Rot Checking	Soft spots or other signs of rot must be checked from time to time. Rotting pumpkins must be thrown away, or cut and added to the compost pile.

The main objectives to be optimized (maximized or minimized) and the uncertainty sources were also analysed [14]:

- *Objectives*: no. of fruits per seed, weight, firmness, colour, dry matter, sugar level, no. of non-sold fruits, conservation time, incomes, costs, benefits.
- *Uncertainty sources*: seeds quality, temperature, rainfall, humidity, solar radiation, atmospheric CO<sub>2</sub> concentration, soil evaporation, wind, weeds, pests, fire or flood disasters, diseases, effects of fertilization, ripening pace, agricultural machinery breakdowns, rot rate, customer demand, competitors influence.

### 3 Pumpkins PHS Decision-making Process in a Collaborative Context

Many works in the literature analyse how different goals values may considerably vary depending on the decisions made throughout the PHS process.

However, most of them face it from a non-collaborative perspective, considering two independent stages.

On the one hand a first stage made up of pre-plantation, plantation and harvest sub-processes where the main goal is to maximize yield [15]-[17]. Other goals are the optimization (max or min) of certain physical-chemical properties [18]-[19].

On the other hand a second stage made up of the storage sub-process where the conservation time (while maintaining acceptable levels of certain important properties over time) becomes the most relevant goal to be maximized ([20]-[27]).

Collaborative perspective in which optimal strategies may involve a trade-off between yield and conservation time is rarely discussed [8]. Nevertheless, other trade-offs have extensively analyzed in the literature, mainly those between the yield and some environmental and social impacts (nutrient cycling, water quality, carbon emissions, soil degradation, labor workload, etc.) [28]-[30].

In this paper an approach based on data analysis tools to support decision-making in the pumpkins PHS process is developed. The obtained results will provide guidelines to make decisions in a collaborative scenario in a two-stage SC (pre-

plantation, plantation and harvest sub-processes & storage sub-process) where different trade-offs between yield and conservation time will be outlined.

## 4 Real Case Study

### 4.1 Study Area and Experiments Development

The study was carried out in South Brittany (France). Neighboring parcels divided into blocks were selected. Only one type of pumpkin was chosen: the orange summer, an uchiki kuri variety that has been bred to a hybrid one to be more productive and resistant.

The different experiments were carried out in each block then, assuming almost constant soil characteristics. Besides, only 15 seeds were planted in each block.

The selected decision variables and their specific values concerning to each of the different PHS sub-processes are as follows:

1. *Pre-plantation*: date (21st week; 24th week)
2. *Plantation*: mulching types (plastic; biodegradable)
3. *Harvest*: state based on maturation degree (under maturity; optimum; controlled; over maturity), brushing (yes; no)
4. *Storage*: storage conditions (hangar; controlled conditions/fridge with a temperature of 14°C, a humidity rate by 60-75% and regular ventilation )

All the other potential variables throughout the different PHS sub-processes (expressed at the beginning of the paper) were assumed to remain constant or not subject to significant variability between the different experiments.

In a first stage, different performance parameters/characteristics of the pumpkins were analyzed after production (pre-plantation, plantation and harvest sub-processes), before being stored (storage sub-process).

- *Yield parameters*: number of commercial fruits/seed planted; Marketable weight/seed planted
- *Physical characteristics*: weight; color; stem stage; hardness with or without skin.
- *Biochemical characteristics*: sugar level; dry matter level.

Different experiments were carried out by crossing the different agreed values for the three decision variables: planting date, mulching type and harvesting state.

It must be remarked that once the seeds are planted, it is relatively easy to guess the maturation degree and therefore the harvesting date from the follow-up of some factors such as temperature or rain (until the flowering) or with the simple visualization of some physical characteristics.

In a second stage, it was aimed to analyze the performance measure “conservation time”.

This was done by storing some samples between 20-30 pumpkins from each modality, that is, considering the planting date, mulching type and the harvesting state based on the maturation degree, under two different storage types: hangar and

controlled conditions (fridge). A weekly tracking allowed to analyze the pumpkins conservation time for each modality and therefore the losses (rotten pumpkins) over time of each modality.

## 4.2 Data Collecting and Processing

The study data was collected either in a traditional manual way or with the help of new technologies such as internet of things sensors. Then, the data was stored in several excel spreadsheet for its analysis.

The excel spreadsheets were loaded in a dataset. For that, it was previously necessary to perform a data cleaning (data conversion, missing values correction, etc.) in order to obtain a consistent dataset. Then, a dataframe was created from the dataset.

## 4.3 Experiments Development and Results

Regarding the first stage (pre-plantation, plantation and harvest sub-processes) it must be noted that due to a lack of data, mulching factor was kept constant (plastic). Therefore eight experiments were carried out (2 levels for “planting date” factor \* 4 levels for “harvesting state” factor), resulting in eight different modalities of pumpkins. Different performance parameters/characteristics (dependent variables) were analyzed.

More specifically, a two-factor ANOVA statistic analysis (2\*4) with various samples per modality was performed for each dependent variable: weight, fruits per seed, sugar, dry matter and firmness (skinless and with skin).

ANOVA analysis (99% confidence level) based on F ratio performed for each one of the previous dependent variables indicated that there were significant differences between the means obtained for the 2 levels of the “planting date” factor.

There were also significant differences between the means of the 4 levels of the “harvesting state” factor except for the dependent variable “fruits per seed”. Finally, only a significant interaction between the factors was found for the dependent variable firmness.

Further analysis based on Tukey’s HSD (honestly significant difference) test was performed to find which means were significantly different from each other for the 4 levels factor “harvesting state”.

Table 5 shows the mean, standard deviation and 99% confidence levels after ANOVA analysis. Only the dependent variables with no interaction between the factors are shown since the firmness (skinless and with skin) would require more precise analysis.



**Table 5.** Statistic parameters (mean, standard deviation and 99% confidence levels limits) after ANOVA analysis of some of the different dependent variables measured after production

DEPENDENT VARIABLES	Factors	Levels	Statistic parameters		99% confidence level limits	
			Mean	Standard deviation	Lower limit	Upper limit
WEIGHT (g)	Planting Date	21 <sup>st</sup> week	1468	181,4712399	1333,062002	1602,937998
		24 <sup>th</sup> week	1293,222222	124,6775504	1200,514755	1385,92969
	Harvesting State	Under maturity	1304,222222	139,1170932	1200,77783	1407,666614
		Optimum	1534,611111	252,9806437	1346,500303	1722,72192
		Controlled	1291,488889	102,4285608	1215,325278	1367,6525
		Over maturity	1392,122222	65,63812465	1343,315165	1440,929279
FRUITS PER SEED (nº)	Planting Date	21 <sup>st</sup> week	2,655555556	0,390631018	2,365090975	2,946020137
		24 <sup>th</sup> week	1,083333333	0,256038192	0,892949	1,273717667
SUGAR (ºbrix)	Planting Date	21 <sup>st</sup> week	7,6	1,544491679	6,866631577	8,333368423
		24 <sup>th</sup> week	10,58333333	1,062159036	10,07899012	11,08767655
	Harvesting State	Under maturity	7,566666667	2,525162261	5,870998287	9,262335047
		Optimum	9,133333333	1,724077853	7,975600088	10,29106658
		Controlled	9,244444444	1,200493726	8,438302486	10,0505864
		Over maturity	10,42222222	1,635531401	9,323948688	11,52049576
DRY MATTER (%)	Planting Date	21 <sup>st</sup> week	11,83333333	2,223156369	10,18024345	13,48642321
		24 <sup>th</sup> week	18,18333333	2,763671252	16,12832855	20,23833812
DRY MATTER (%)	Harvesting State	Under maturity	15,56666667	4,830596927	11,97474169	19,15859164
		Optimum	17,78333333	3,307214336	15,32416194	20,24250473
		Controlled	13,7	4,097316195	10,65332635	16,74667365
		Over maturity	12,98333333	2,900632115	10,82648748	15,14017919

The main insights were the following:

- F ratio from ANOVA indicated that planting date has an influence over the weight, fruits per seed, sugar and dry matter. But this influence is greater for the last three dependent variables and not as much for the weight. For example the yield (fruits per seed) of planting at 21st week (start of june) rather than at 24th (end of june) results in a mean deviation of 1.5 fruits per seed approx.
- F ratio from ANOVA indicated that harvesting state has an influence over the weight, sugar and dry matter. Further Tukey's test indicates that: for the weight there is a slight significant variation between the means of the levels "optimum" and "controlled" (250 g. aprox.); for the sugar there is a significant variation between the means of the level "under maturity" with respect "optimum", "controlled" and "over maturity" (2º brix aprox.); for the dry matter there is a significant variation between the means of the level "optimum" with respect "controlled" and "over maturity" (4,5% aprox.).

Regarding the second stage (storage sub-process) it must be also noted that, similarly to the first stage, a lack of data led to not to consider the brushing variable. This simplification led to just check the storage conditions (hangar, controlled conditions/fridge) over the former 8 modalities. A weekly tracking allowed to analyze the "conservation time" of the different samples of pumpkins.

As in the first stage, a two-factor ANOVA analysis (8\*2) with various samples per group was performed for the dependent variable conservation time. ANOVA analysis (99% confidence level) based on F ratio indicated that there were significant differences either between some of the means obtained for the 8 levels of the "modality" factor or the means for the 2 levels of the "storage conditions" factor. But in this case, a significant interaction between the factors existed.

It led to separately analyze the simple effects in an attempt to maintain the essential structure of the interaction effect. The approach consisted in breaking the interaction

effect into component parts and then tested the separate parts for significance (Tables 6 to 7). Since multiple test were performed, some significance level adjustments were applied, dividing the current one (0,01%) by the number of simple effects tests performed within each factor [31].

**Table 6.** Statistic parameters (mean and standard deviation) after ANOVA analysis to test effect of storage conditions over each modality.

DEPENDENT VARIABLE	Modality factor	Storage Conditions factor	Statistic parameters	
			Mean	Standard deviation
CONSERVATION TIME (weeks)	21 <sup>st</sup> week -under maturity	hangar	18,6	2,357672727
		fridge	31,7	8,116182218
	21 <sup>st</sup> week -optimum	hangar	19,4	4,404543109
		fridge	29,06666667	5,391351098
	21 <sup>st</sup> week -controlled	hangar	16,06666667	3,321127076
		fridge	18,3	4,526930908
	21 <sup>st</sup> week -over maturity	hangar	13,4	3,317664322
		fridge	15,2	5,155512617
	24 <sup>th</sup> week -optimum	hangar	19,86666667	3,540244813
		fridge	25,4	5,424084223
	24 <sup>th</sup> week -optimum	hangar	20,33333333	5,208304598
		fridge	22,4	4,406891155
	24 <sup>th</sup> week -controlled	hangar	15,83333333	4,698373404
		fridge	17,66666667	5,83292281
	24 <sup>th</sup> week -over maturity	hangar	15,23333333	4,352433591
		fridge	14,7	4,340268544

**Table 7.** Statistic parameters (mean and standard deviation) after ANOVA analysis to test effect of modality over each storage condition.

DEPENDENT VARIABLE	Storage Conditions factor	Modality factor	Statistic parameters	
			Mean	Standard deviation
CONSERVATION TIME (weeks)	hangar	21 <sup>st</sup> week -under maturity	18,6	2,357672727
		21 <sup>st</sup> week -optimum	19,4	3,74718285
		21 <sup>st</sup> week -controlled	16,06666667	3,321127076
		21 <sup>st</sup> week -over maturity	13,4	3,317664322
		24 <sup>th</sup> week -under maturity	19,86666667	3,540244813
		24 <sup>th</sup> week -optimum	20,33333333	5,208304598
		24 <sup>th</sup> week -controlled	15,83333333	4,698373404
		24 <sup>th</sup> week -over maturity	15,23333333	4,352433591
	fridge	21 <sup>st</sup> week -under maturity	31,7	8,116182218
		21 <sup>st</sup> week -optimum	29,06666667	6,736075463
		21 <sup>st</sup> week -controlled	18,3	4,526930908
		21 <sup>st</sup> week -over maturity	15,2	5,155512617
		24 <sup>th</sup> week -under maturity	25,4	5,424084223
		24 <sup>th</sup> week -optimum	22,4	4,406891155
		24 <sup>th</sup> week -controlled	17,66666667	5,83292281
		24 <sup>th</sup> week -over maturity	14,7	4,340268544

The main insights were the following:

- F-ratio from the various ANOVA analysis to separately test the effect of storage conditions over the different modality levels resulted in significant mean variations only for the modalities 21st week-under maturity, 21st week-optimum and 24th week-under maturity, and mainly the first one (13 weeks gap aprox.)
- F-ratio from the various ANOVA analysis to separately test the effect of modality over the different storage conditions levels resulted in significant

mean variations either for the hangar or fridge levels. Further analysis based on Tukey’s HSD test was performed to find which means were significantly different from each other for the 8 modality levels.

- HSD scored 3,562 for the case of hangar level, so that significant mean variations were found between:
  - 24th week-optimum with respect to 21st week-controlled, 21st week-over maturity, 24th week-controlled and 24th week-over maturity.
  - 24th week-under maturity with respect to 21st week-controlled, 21st week-over maturity, 24th week-controlled and 24th week-over maturity.
  - 21st week-optimum with respect to 21st week-over maturity, 24th week-controlled and 24th week-over maturity.
  - 21st week-under maturity with respect to 21st week-over maturity
- HSD scored 5,194 for the case of fridge level, so that significant mean variations were found between:
  - 21st week-under maturity with respect to 21st week-controlled, 21st week-over maturity, 24th week-under maturity, 24th week-optimum, 24th week-controlled and 24th week-over maturity.
  - 21st week-optimum with respect to 21st week-controlled, 21st week-over maturity, 24th week-under maturity, 24th week-optimum, 24th week-controlled and 24th week-over maturity.
  - 24th week-under maturity with respect to 21st week-controlled, 21st week-over maturity, 24th week-optimum, 24th week-controlled and 24th week-over maturity.
  - 24th week-optimum with respect to 21st week-over maturity and 24th week-over maturity.

This statistic analysis in both stages can be used as an aid for SC collaborative decision-making, so that different trade-offs between yield and conservation time can be easily computed and therefore implemented (see Fig.1 and Table 8).

Fig. 1 depicts how the losses were over time for the various modalities under different storage conditions. Only the first 28 weeks were represented.

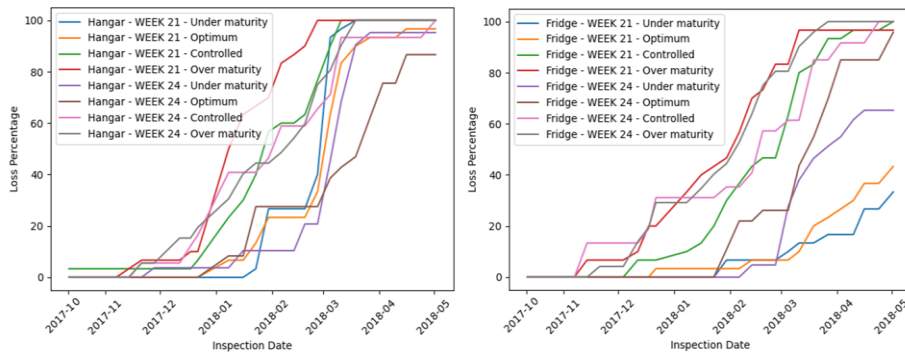


Fig. 1. Loss percentage over time of the different “modalities” varying storage conditions

Table 8 shows the different trade-offs for the various modalities. Each modality has a different yield (only dependent of the planting date) and a loss percentage (25%, 50%, 75% and 100%) over time depending on the storage conditions: hangar or fridge. It must be noted that some modalities under certain storage conditions were not completely lost over the 28 weeks tracking time, so that only the loss percentage at that time is indicated.

**Table 8.** Yield & Conservation time (% losses over time) of the various modalities

1st stage (pre-plantation,plantation, harvest)		2nd stage (storage)							
Modalities	YIELD (no.fruits per seed)	% LOSSES OVER TIME (weeks) - Hangar				% LOSSES OVER TIME (weeks) - Fridge			
		25%	50%	75%	100%	25%	50%	75%	100%
WEEK 21-Under Maturity	2,65	15	19	20	22	27	28 (30%)		
WEEK 21-Optimum		15,5	19,5	21	28 (95%)	24	28 (40%)		
WEEK 21-Controlled		13	15	19	20,5	15	19	21	28
WEEK 21-Over Maturity		10,5	12	15	18,5	11,5	16	18	28 (95%)
WEEK 24-Under Maturity	1,08	20	21	22	28 (93%)	20	22,5	28 (65%)	
WEEK 24-Optimum		13,5	23	24	28 (85%)	18	21,5	23	28 (95%)
WEEK 24-Controlled		10,5	16	20,5	28	10	18	22	26,5
WEEK 24-Over Maturity		12	17,5	21	22	10	16	18	22,5

Some insights from Fig. 1 and Table 8 could be drawn:

- Harvesting states “under maturity” and “optimum” had a reasonable conservation time for storage condition “hangar”. However those whose planting date was in the week 24 (higher yields) had even higher conservation times.
- Losses over time, as it could be predicted, were lower for storage condition “fridge”. However the maximum variation between “hangar” and “fridge” is given for those whose planting date was in the week 21, mainly for harvesting states “under maturity” and “optimum”. No rotten pumpkin after 24-27 weeks stored and 60-70% marketable after 28 weeks.

Different trade-offs between yield and conservation are then outlined. Decision-making in a collaborative scenario will select the most profitable for the SC as a whole. Nevertheless, other factors will have to be considered such as time to market after harvest, targeted quality of pumpkins, sustainable issues (environmental and social impacts) as well as the cost of implementing the different decisions.

It must be finally noted the absence in this paper of knowing how certain relevant characteristics (biochemical or physical) evolve during storage, and therefore meet the customers quality requirements when marketed. This would require a more precise analysis.

## 5 Conclusions

Two main contributions are made in this paper:

First, the pumpkins plantation, harvest and storage (PHS) process was characterized, describing the decisions and their usual scopes in each of the different sub-processes. Later, with the use of data analysis tools, the effect of some of these decisions (with specific scopes) over certain objectives throughout the PHS process

such as physical and biochemical characteristics, yield or conservation time was checked.

Secondly, and taking advantage of the first contribution, some decision-making insights in a collaborative real two-stage pumpkins SC were pointed out. Some trade-offs were outlined between the yield (plantation and harvest 1<sup>st</sup> stage) and conservation time (storage 2<sup>nd</sup> stage) to develop win-win strategies.

**Acknowledgments.** The authors acknowledge the support of the project 691249, RUCAPS: “Enhancing and implementing knowledge based ICT solutions within high risk and uncertain conditions for agriculture production systems”, funded by the European Union’s research and innovation programme under the H2020 Marie Skłodowska-Curie Actions.

## References

1. Prima, W. A., Xing, K., Amer, Y.: Collaboration and Sustainable Agri-food Supply Chain: a Literature Review. *MATEC*, 5802004 (2016)
2. Pérez, D., Alarcón, F., Drummond, C., Ortiz, A.: Towards a Sustainable Agri-food Supply Chain Model. The Case of LEAF. In: Ortiz, Á., Andrés, C., Poler, R., García-Sabater J.P. (eds) *Engineering Digital Transformation. LNCS*, pp. 333--341. Springer, Cham (2019)
3. Estes, A., Alemany, M.M.E., Ortiz, A.: Conceptual Framework for Designing Agri-food Supply Chains under Uncertainty by Mathematical Programming Models. *Int. J. Prod. Res.* 56(13), 4418--4446 (2018).
4. Bahrami, R., Khodadadi, M., Piry, S., Hassanpanah, D.: The Effects of Planting Methods and Head Pruning on Seed Yield and Yield Components of Medicinal Pumpkin (*Cucurbita Pepo* Subsp. *Pepo* Convar. *Pepo* Var. *Styriaca*) at Low Temperature Areas. *Pak. J. Bio. Sci.* 12(6), 538--541 (2009)
5. Tarus, W.J., Ochuodho, J.O., Rop, N.K.: Influence of Harvesting Stage on Seed Quality Aspects of Pumpkin (*Cucurbita Pepo* L.). *J. Exp. Agr.* 18(2), 1--9 (2017)
6. Amodio, M.L., Rinaldi, R., Colell, G.: Extending Shelf Life of Fresh-cut Pumpkin (*Cucurbita Maxima*): Effect of Pre-treatments and Storage Conditions. *Acta. Hortic.* 876, 333--340 (2010)
7. Pimentel, D., Cerasale, D., Stanley, R.C., Perlman, R., Newman, E.M., Brent, L.C., Chang, D.T.I.: Annual vs Perennial Grain Production. *Agric. Ecosyst. Environ.* 161, 1--9 (2012)
8. Biesiada, A., Nawirska, A., Kucharska, A., Sokół-Łętowska, A.: The Effect of Nitrogen Fertilization Methods on Yield and Chemical Composition of Pumpkin (*Cucurbita Maxima*) Fruits Before and After Storage. *Veg. Crops. Res. B.* 70, 203--211 (2009)
9. Gwenaël, J., Paul, Ch., Sau, I., Saurabh, S., Thomasse, S.: Hitting and Harvesting Pumpkins. *Siam. J. Discrete. Math.* 28(3), 1363--1390 (2014)
10. Oluoch, M.O.: Production Practices of Pumpkins for Improved Productivity. *Scripta. Hort.* 15, 181--189 (2012)
11. Ondigi, A., Toili, W., Ijani, A., Omuterema, S.: Comparative Analysis of Production Practices and Utilization of Pumpkins (*Cucurbita Pepo* and *Cucurbita Maxima*) by Smallholder Farmers in the Lake Victoria Basin, East Africa. *Afr. J. Environ. Sci. Tech.* 2(9), 296--304 (2008).
12. Naik, M.L., Prasad, V.M., Raya, L.P.: A Study on Character Association and Path Analysis in Pumpkin (*Cucurbita Moschata* Duch. Ex Poir.). *Int J Adv Res.* 3(1), 1030--1034 (2015)
13. Nerson, H., Paris, H.S., Paris, E.P.: Fruit Shape, Size and Seed Yield in *Cucurbita Pepo*. *Acta Hort.* 510, 227--230 (2000)

14. Ortiz, A., Alarcón, F., Pérez, D., Alemany, M.M.E.: Identifying the Main Uncertainties in the Agri-Food Supply Chain. In: Mula, J., Barbastefano, R., Díaz-Madroñero, M., Poler, R. (eds) *New Global Perspectives on Industrial Engineering and Management. Lecture Notes in Management and Industrial Engineering*, pp. 221–229. Springer, Cham (2019)
15. Khalid, E., Mohammed, E.: Dependence of Pumpkin Yield on Plant Density and Variety. *Am. J. Plant. Sci.* 2, 636–643 (2011)
16. Jakop, M., Grobelnik S., Bavec, M., Robačar, M., Vukmanič, T., Liseč, U., Bavec, F.: Yield Performance and Agronomic Efficiency in Oil Pumpkins (*Cucurbita Pepo* L. Group *Pepo*) Depending on Production Systems and Varieties. *Agr.* 14(1), 25–36 (2017).
17. Ahmed, B., Masud, M.A.T., Zakaria, M., Hossain, M.M., Mian, M.A.K.: Evaluation of Pumpkin (*Cucurbita Moschata* Duch. Ex Poir.) for Yield and other Characters. *Bangl. J. Agr. Res.* 42(1), 1–11 (2017)
18. Zhao, J., Liu, W., Chen, D., Song, Y., Zhang, Y., Ni, Y., Li, Q.: Physicochemical and Antioxidant Properties of Different Pumpkin Cultivars Grown in China. *Food Sci Technol.* 9(4), 308–316 (2015).
19. Zhou, Chun., Li, Liu., Wei, Zhao., Jing, Yuan., Chi, Song., Yi, Chen., Dong, Ni., Yuan, Ying., Li, Quan-Hong.: The Effect of High Hydrostatic Pressure on the Microbiological Quality and Physical–Chemical Characteristics of Pumpkin (*Cucurbita Maxima* Duch.) during Refrigerated Storage. *Innov. Food. Sci. Emerg.* 21, 24–34 (2014)
20. Loy, J.B.: Harvest Period and Storage Affect Biomass Partitioning and Attributes of Eating Quality in Acorn Squash (*Cucurbita Pepo*). *Présenté à Cucurbitaceae*, Asheville, North Carolina, USA, pp. 568–577 (2006).
21. Nagao, A., Indou, T., Dohi, H.: Effects of Curing Condition and Storage Temperature on Postharvest Quality of Squash Fruit. *J. Jpn. Soc. Hort. Sci.* 60(1), 175–181 (1991)
22. Habibunnisa, R., Prasad, R., Shivaiah K.M.: Storage Behaviour of Minimally Processed Pumpkin (*Cucurbita Maxima*) under Modified Atmosphere Packaging Conditions. *Eur. Food. Res. Technol.* 212(2), 165–169 (2001)
23. Sharrock, K.R., Parkes, S.L.: Physiological Changes During Development and Storage of Fruit of Buttercup Squash in Relation to their Susceptibility to Rot. *New. Zeal. J. Crop. Hort.* 18(4), 185–196 (1990)
24. Sabeera, M., Waqas, B., Nuzhat, N., Masoodi, F.A., Bhat, Mohd Munaff, B., Bazaz, R.: Effect of Storage on Physicochemical, Microbial and Antioxidant Properties of Pumpkin (*Cucurbita Moschata*) Candy. *Cog. Food. Agr.* 2(1).
25. Rahman, M.A., Miaruddin, M., Khan, M.H.H., Masud, M.A.T., Begum, M.M.: Effect of Storage Periods on Postharvest Quality of Pumpkin. *Bangl. J. Agr. Res.* 38(2), 247–255 (2013)
26. Song, Jiangfeng., Wei, Qiuyu., Wang, Xiaoping., Li, Dajing., Liu, Chunquan., Zhang, Min., Meng, L.: Degradation of Carotenoids in Dehydrated Pumpkins as Affected by Different Storage Conditions. *Food. Res. Int.* 107, 130–136 (2018)
27. Matová, A.: The Influence of Genotype and Storage Condition on the Content of Selected Bioactive Substances in the Fruit of Pumpkin (*Cucurbita Moschata* Duch.). *J. Microbiol. Bioech. Food. Sci.* 9(2), 288–292 (2019)
28. Tilman, D., Balzer, C., Hill, J., Befort, B.L.: Global Food Demand and the Sustainable Intensification of Agriculture. *Proc. Natl. Acad. Sci. U. S. A.* 108, 20260–20264 (2011)
29. Wang, W., Wang, C., Sardans, J., Fang, Y., Singh, B. P., Wang, H., Huang, X., Zeng, C., Tong, C., Peñuelas, J.: Multiple Trade-Offs Between Maximizing Yield and Minimizing Greenhouse Gas Production in Chinese Rice Croplands. *Land. Degrad. Dev.* (2020)
30. Pleijel, H., Uddling, J.: Yield Vs. Quality Trade-Offs for Wheat in Response to Carbon Dioxide and Ozone. *Glob. Change. Biol.* 18(2), 596–n/a. (2011)
31. Pedhazur, E.J., Schmelkin, L.P.: *Measurement, Design, and Analysis: An Integrated Approach*. Hillsdale, NJ: Lawrence Erlbaum Associates (1991)