



**HAL**  
open science

## A Kappa model for hepatic stellate cells activation by TGFB1

Matthieu Bouguéon, Pierre Boutillier, Jerome Feret, Octave Hazard, Nathalie  
Theret

► **To cite this version:**

Matthieu Bouguéon, Pierre Boutillier, Jerome Feret, Octave Hazard, Nathalie Theret. A Kappa model for hepatic stellate cells activation by TGFB1. CompSysBio 2021 - Advanced Lecture Course on Computational Systems Biology, Nov 2021, Aussois, France. pp.1-1. hal-03545135

**HAL Id: hal-03545135**

**<https://inria.hal.science/hal-03545135>**

Submitted on 27 Jan 2022

**HAL** is a multi-disciplinary open access archive for the deposit and dissemination of scientific research documents, whether they are published or not. The documents may come from teaching and research institutions in France or abroad, or from public or private research centers.

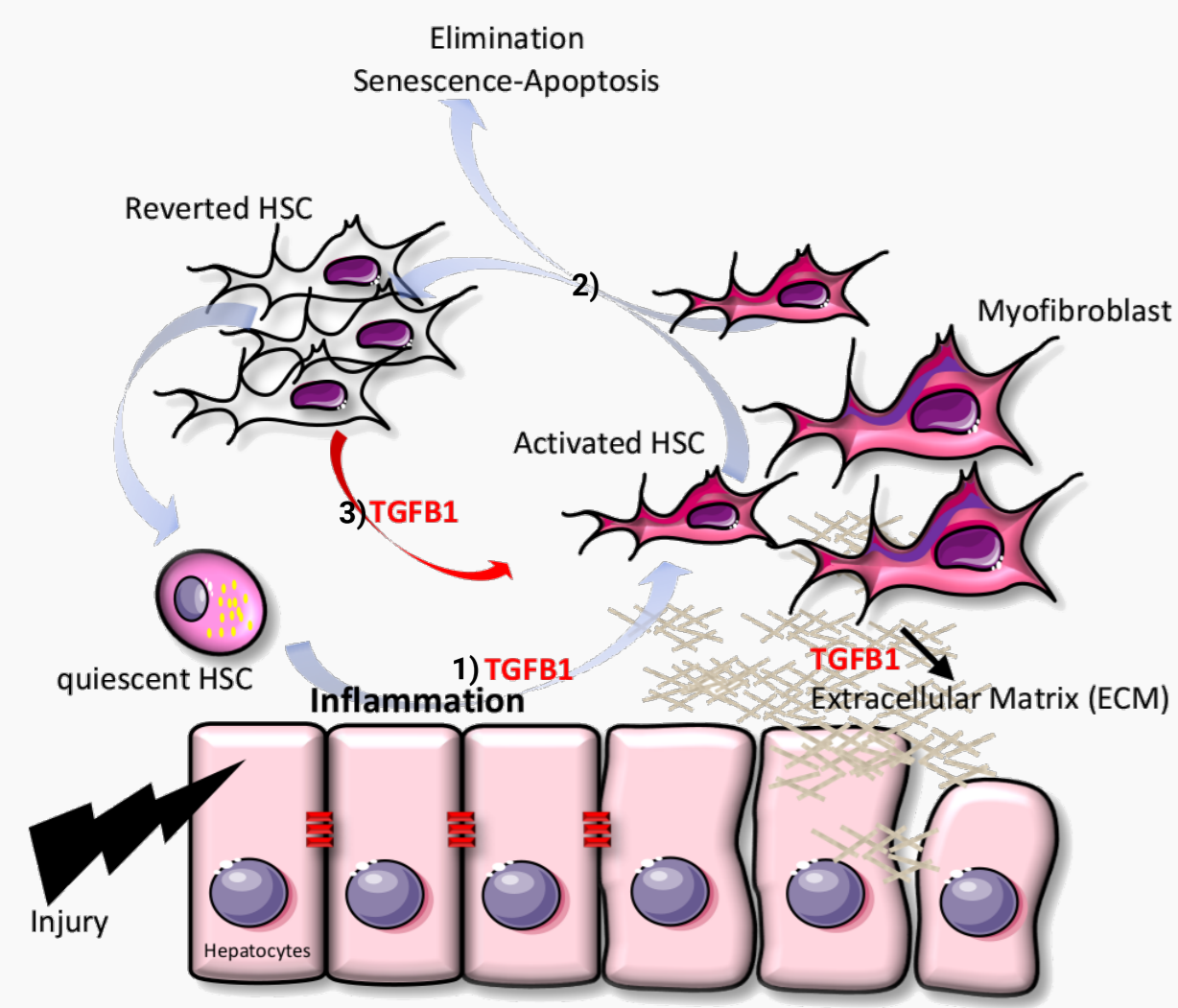
L'archive ouverte pluridisciplinaire **HAL**, est destinée au dépôt et à la diffusion de documents scientifiques de niveau recherche, publiés ou non, émanant des établissements d'enseignement et de recherche français ou étrangers, des laboratoires publics ou privés.

# A Kappa model for hepatic stellate cells activation by TGFB1

- 1 2 Matthieu Bouguéon
- 3 Pierre Boutillier
- 4 5 Jérôme Feret
- 4 5 6 Octave Hazard
- 1 2 Nathalie Théret

- 1 Univ Rennes, Inria, CNRS, IRISA, UMR 6074, Rennes, France
- 2 Univ Rennes, Inserm, EHESP, Irset, UMR S1085, Rennes, France
- 3 Nomadic Lab, France
- 4 Team Antique, Inria Paris, Paris, France
- 5 DI-ENS (ÉNS, CNRS, PSL University), École normale supérieure, Paris, France
- 6 École Polytechnique, Palaiseau, France

## Introduction

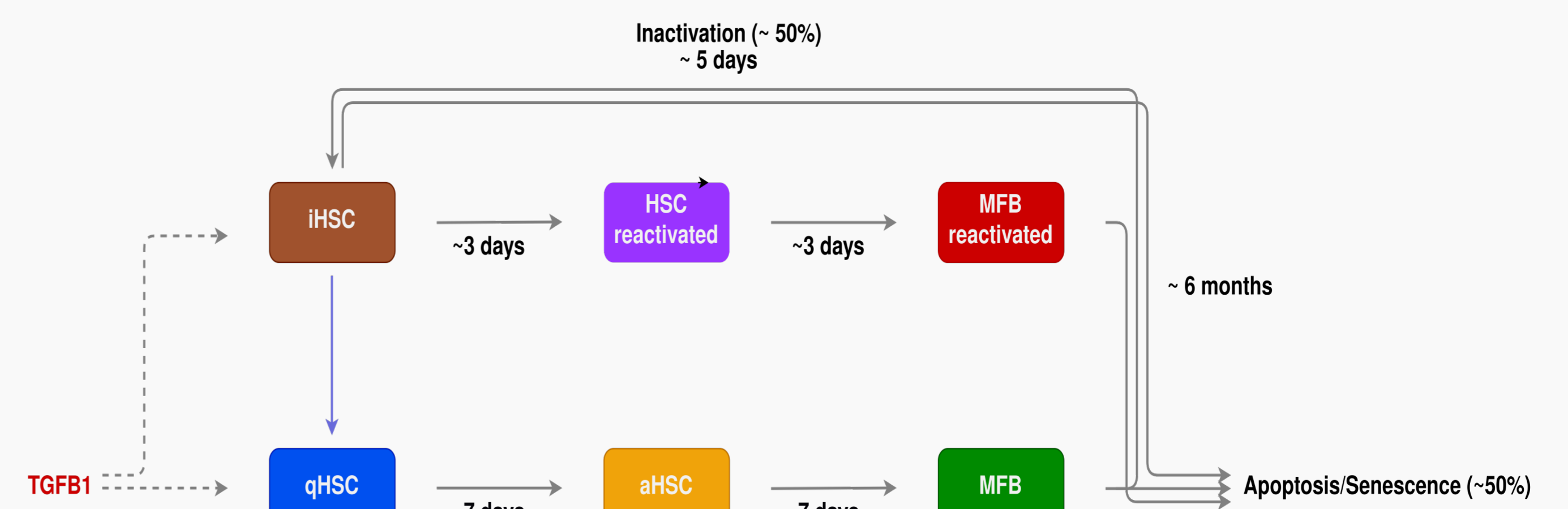


Chronic hepatitis is associated with the development of fibrosis, which results in the abnormal deposition of extracellular matrix (ECM) and a severe dysfunction of liver functions. The terminal stage of fibrosis is cirrhosis, which constitutes the major risk of occurrence of Hepatocellular Carcinoma (HCC). The matrix microenvironment is therefore the major regulator of events related to the fibrosis-cirrhosis-cancer progression and Hepatic Stellate Cells (HSC) are the main actors of the extracellular matrix remodelling.

- Upon liver injury, damaged hepatocytes produce signals inducing inflammation that in turn promotes **TGFB1**-dependent activation of **quiescent HSC (qHSC)**(1). **Activated HSC** orchestrate tissue repair and are either eliminated through Senescence and Apoptosis (2) or deactivated towards **reverted HSC (iHSC)**(2), that can be reactivated more rapidly(3).
- Upon chronic liver injuries, **activated HSC(aHSC)** progress toward a **Myofibroblast (MFB)** state that escape to control, leading to fibrosis.

The understanding of the dynamics of HSC activation and regulation by TGFB1 is essential to identify markers and therapeutic targets likely to promote the resolution of fibrosis at the expense of its progression. Here we develop a rule-based model to characterize the dynamics of HSC activation and identify the key regulators.

## Model



Schematic representation of the model, built using biological data

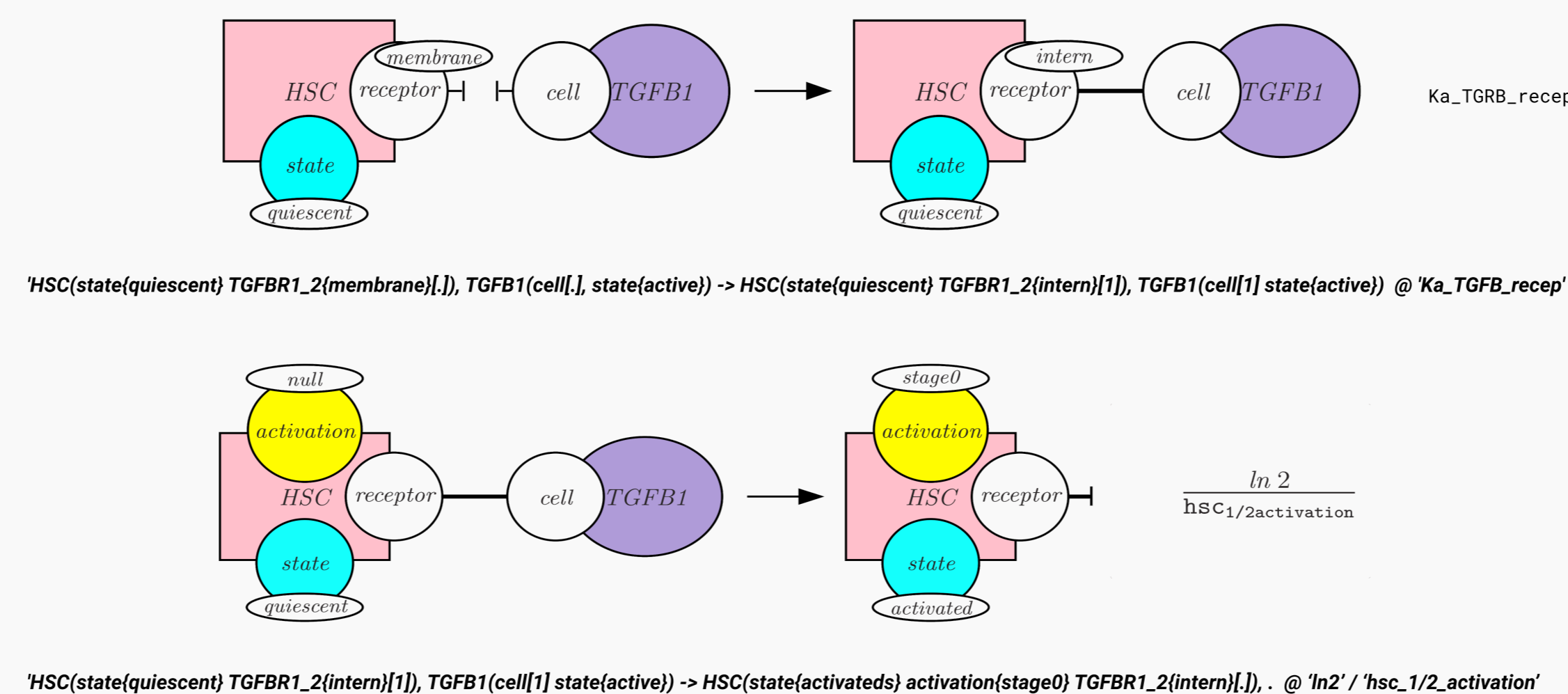
## Kappa

### Kappa:

- Rule-based language for modeling systems of interacting agents (<https://kappalanguage.org/>)
- Entities are graphical structures, rules are graph-rewrite directives.
- Rules locally modified the state of a system

### Tools:

- Stochastic simulator **KaSim**
  - a. samples trajectory according to their probability density distribution
  - b. relies on a representation of the state of the system as a site graph
  - c. set of events that may be applied in the current state is computed dynamically
- Modeling platform
  - a. direct simulation
  - b. interactions during the execution of a model

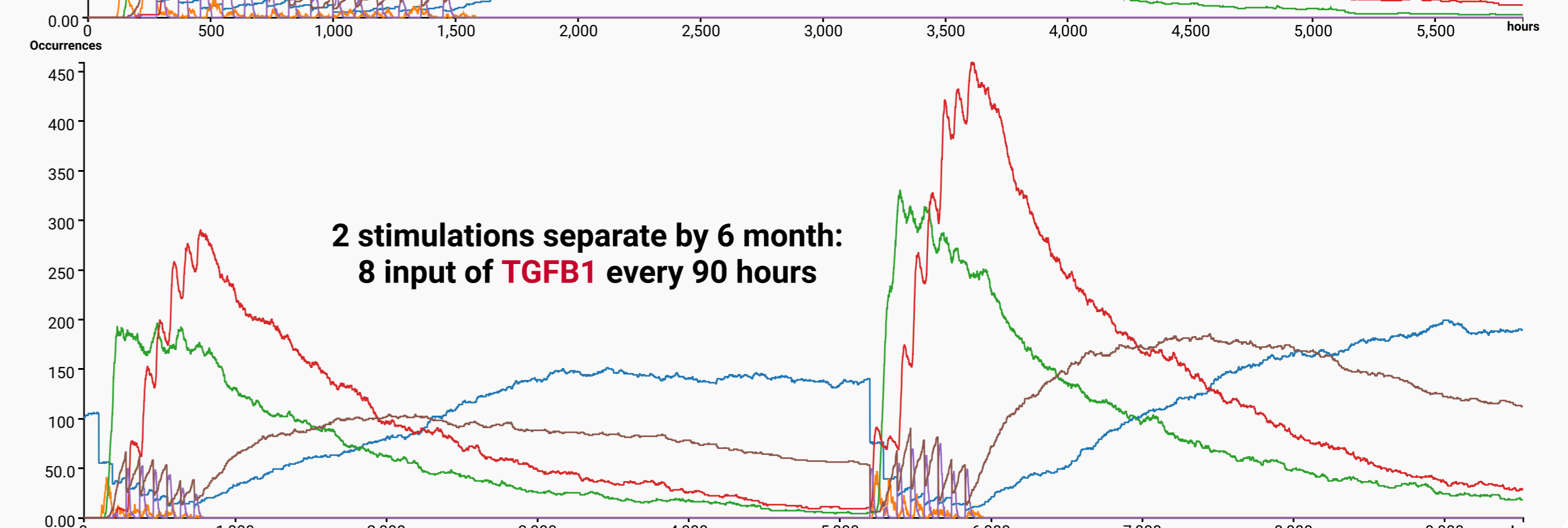
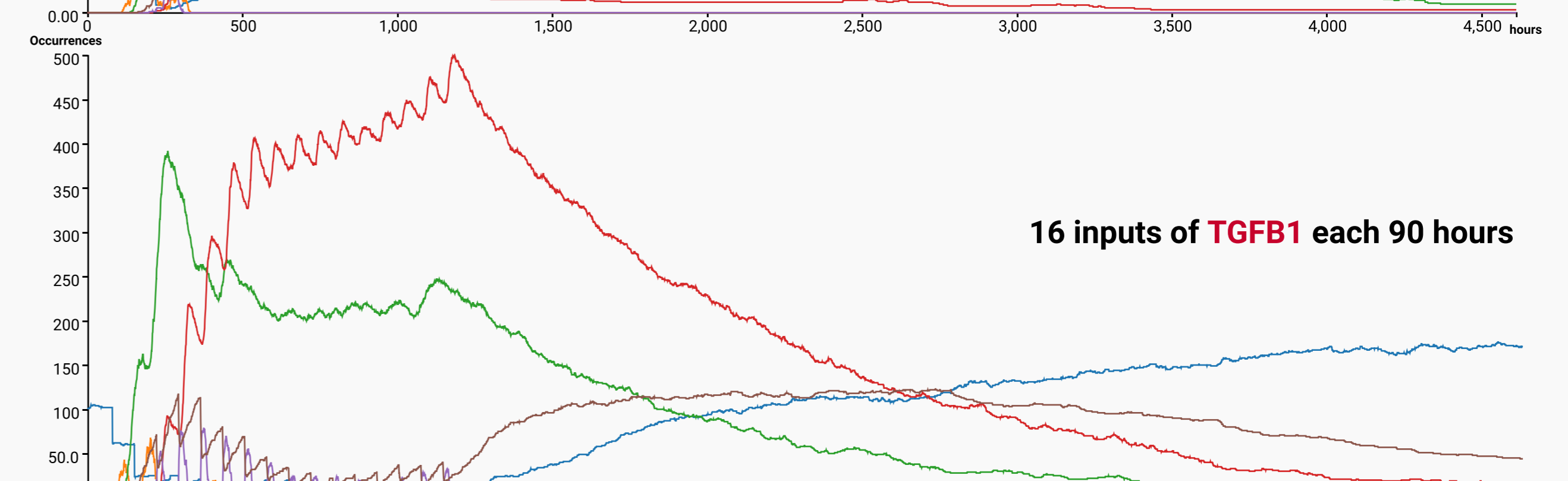
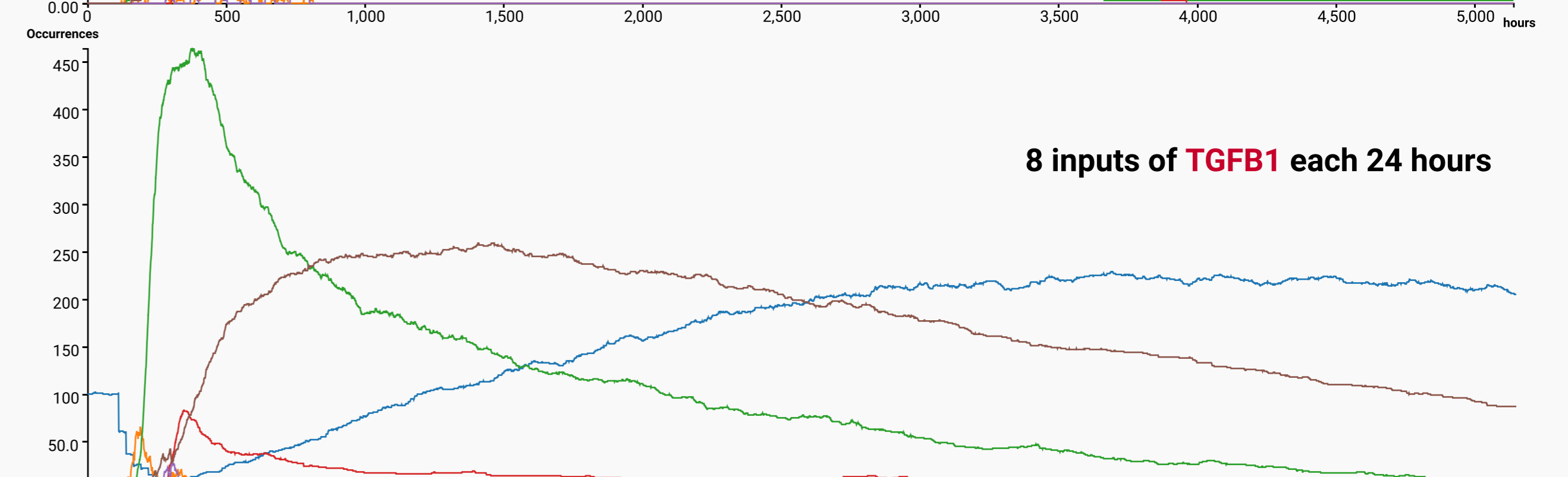
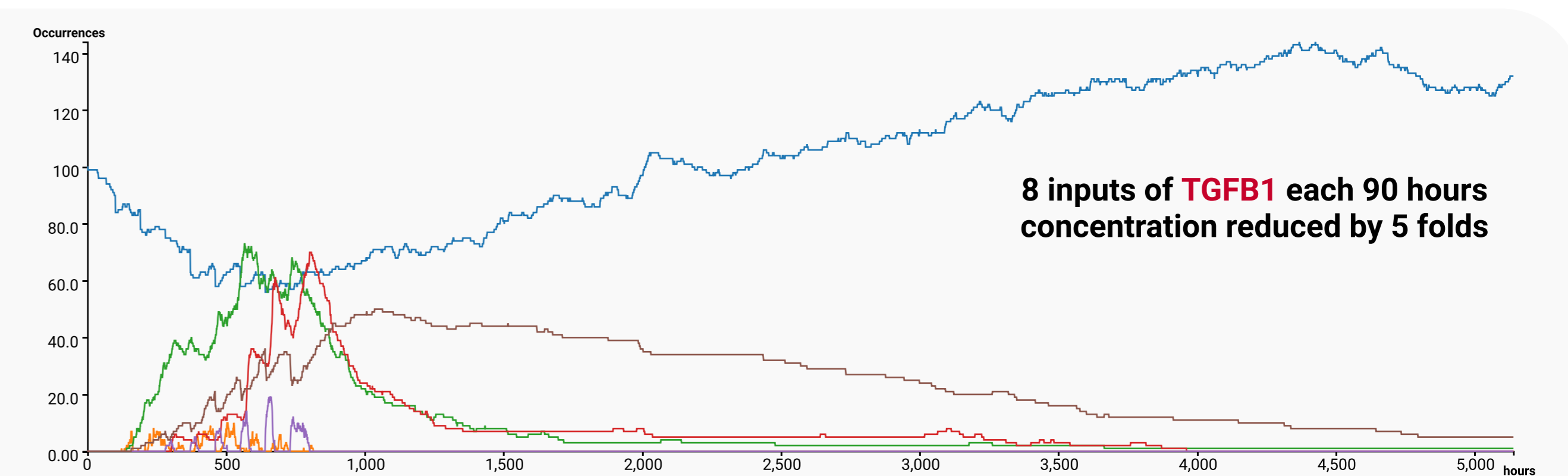
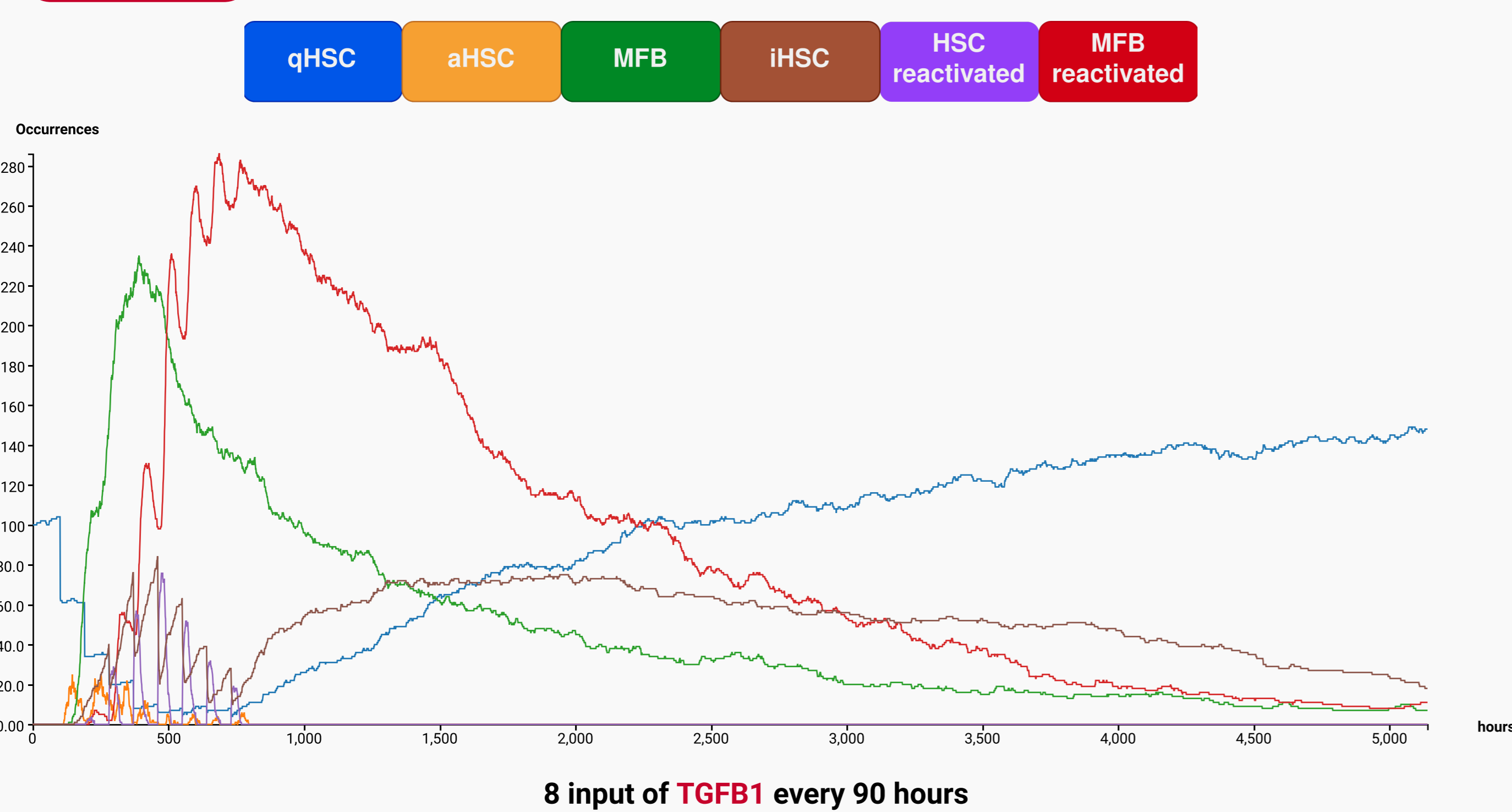


Agent (HSC and TGFB1) are defined by different sites:

- the site **receptor** which bind to the site **cell** of **TGFB1**
- the site **state** which have different values: **quiescent** or **activated**

M Bouguéon, P Boutillier, J Feret, O Hazard and N Theret. 2021 A Kappa model for hepatic stellate cells activation by TGFB. WILEY, Systems Biology Modelling and Analysis: Formal Bioinformatics Methods and Tools.

## Results



## Conclusion / Perspectives

### Conclusion

- **Reverted HSC (iHSC)** are key regulators
- **TGFB1** is necessary to induce HSC activation but chronic stimulation by **TGFB1** doesn't allow to reach a fibrotic state characterised by persistent high level of **MFB**

### Perspectives

Because **ECM** deposition induced by **activated HSC** and **MFB** lead to an increase of stiffness, which may also contribute to activation of **HSC** (4). The futur challenges will be the integration of a new agent **ECM** to take into account this information.

