



**HAL**  
open science

# Learning to Parse Sentences with Cross-Situational Learning using Different Word Embeddings Towards Robot Grounding

Subba Reddy Oota, Frédéric Alexandre, Xavier Hinaut

► **To cite this version:**

Subba Reddy Oota, Frédéric Alexandre, Xavier Hinaut. Learning to Parse Sentences with Cross-Situational Learning using Different Word Embeddings Towards Robot Grounding. Spatial Language Understanding and Grounded Communication for Robotics Workshop, ACL-IJCNLP 2021, Aug 2021, Bangkok, Thailand. . hal-03533730

**HAL Id: hal-03533730**

**<https://inria.hal.science/hal-03533730>**

Submitted on 19 Jan 2022

**HAL** is a multi-disciplinary open access archive for the deposit and dissemination of scientific research documents, whether they are published or not. The documents may come from teaching and research institutions in France or abroad, or from public or private research centers.

L'archive ouverte pluridisciplinaire **HAL**, est destinée au dépôt et à la diffusion de documents scientifiques de niveau recherche, publiés ou non, émanant des établissements d'enseignement et de recherche français ou étrangers, des laboratoires publics ou privés.



# Learning to Parse Sentences with Cross-Situational Learning using Different Word Embeddings Towards Robot Grounding

Spatial Language Understanding and Grounded Communication for Robotics Workshop, ACL-IJCNLP 2021

Subba Reddy Oota<sup>1</sup>, Frédéric Alexandre<sup>1</sup>, Xavier Hinaut<sup>1</sup>

<sup>1</sup>INRIA Bordeaux Sud-Ouest, France

{subba-reddy.oota, frederic.alexandre, xavier.hinaut}@inria.fr



## Introduction

- Grounded Language Acquisition:
  1. it is the process of learning a language
  2. how children can learn language by observing their environments, interacting with others, understanding the concepts of a language (i.e., word-to-meaning) as it relates to the physical world.
- Cross-situational Learning (CSL): Understanding the mechanism enabling children to learn rapidly word-to-meaning mapping in uncertain conditions.

## Why to perform grounded language acquisition through CSL?

- Acquiring language is not a supervised task: e.g. before one year of age, children can segment words from speech based on statistical learning mechanisms.
- What children observe while hearing the "the red cup is on the right" and how they map these sounds to multi-modal features, learning the concept as it refers to a red or blue cup.
- It is still not understood how meaning concepts are captured from complex sentences, along with learning language-based interactions.
- Also, how pre-trained transformer models perform grounded language acquisition through cross-situational learning (CSL) remains unclear.
- Such systems could benefit the field of human-robot interactions and help understand how children learn and ground language.

## Main Contributions

- We introduce a fine-tuned BERT using the masked-language modeling objective trained on a language corpus (i.e. Juven's CSL + GoLD).
- We showcase that One-Hot and BERT fine-tuned representations significantly improve the stimulated vision's prediction than pre-trained Google BERT.
- We interpret the inner working details of both models and plot the evolution of the output activation during the processing of a sentence.

## Approach

To build the grounded language acquisition models to employ a CSL task using two sequence models:

- Echo State Networks (i.e Reservoir Computing) – ESN
  1. ESN with Final Learning: the online algorithm is applied to the reservoir state after the last word of the sentence.
  2. ESN with Continual Learning: the reservoir states are updated after each word of a sentence using the online method
- Long Short-Term Memory Networks (LSTM)

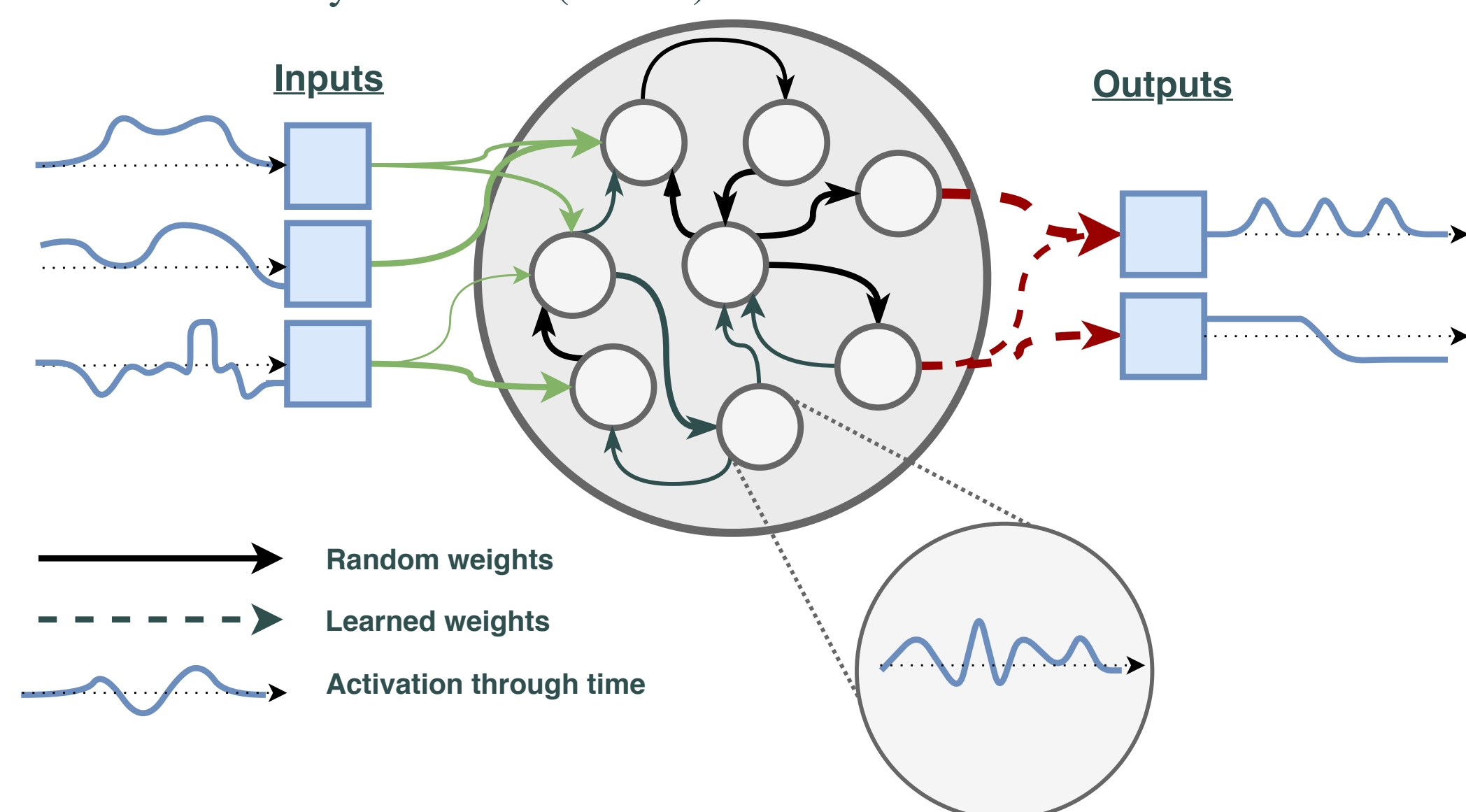


Figure 1: Echo State Networks are an instance of the Reservoir Computing paradigm using units with continuous states

## Evaluation Metrics

"the cup is on the right"		
Imagined vision	is valid ?	is exact ?
(a)	X	X
(b)	✓	X
(c)	✓	✓

Figure 2: Evaluations of different imagined scenes: Valid and Exact Errors.

## Dataset

- **Juven's CSL Dataset:** It is composed of 1000 training sentences, 1000 testing sentences, where each sentence is describing one or two objects.
- **Grounded language dataset (GoLD):** There are 8250 textual descriptions consists of 47 object classes spread across five different groups, 7 actions, and 8 colors.

## Experimental Results

### Baseline Results Comparison

Model	Juven's CSL Data		GoLD Data	
	Valid Error	Exact Error	Valid Error	Exact Error
ESN FL + One-Hot	0.28	5.64	20.05	49.7
ESN FL + BERT CSL	<b>0</b>	6.28	25.22	47.4
ESN FL + Google BERT	0.2	7.72	26.8	51.48
ESN CL + One-Hot	2.32	12.1	20.16	49.5
ESN CL + BERT CSL	2.41	13.7	<b>18.19</b>	45.2
ESN CL + Google BERT	2.78	14.6	22.92	49.01
LSTM + One-Hot	0.1	3.5	30.65	34.65
LSTM + BERT CSL	0.2	<b>1.3</b>	22.72	<b>27.11</b>
LSTM + Google BERT	<b>0</b>	4.56	31.9	36.35

Table 1: Accuracy for word attribute prediction using Xception CNN classifiers. The precision and recall for both single and multi-task experiments are listed in the table.

### Juven's CSL: Quantitative Analysis

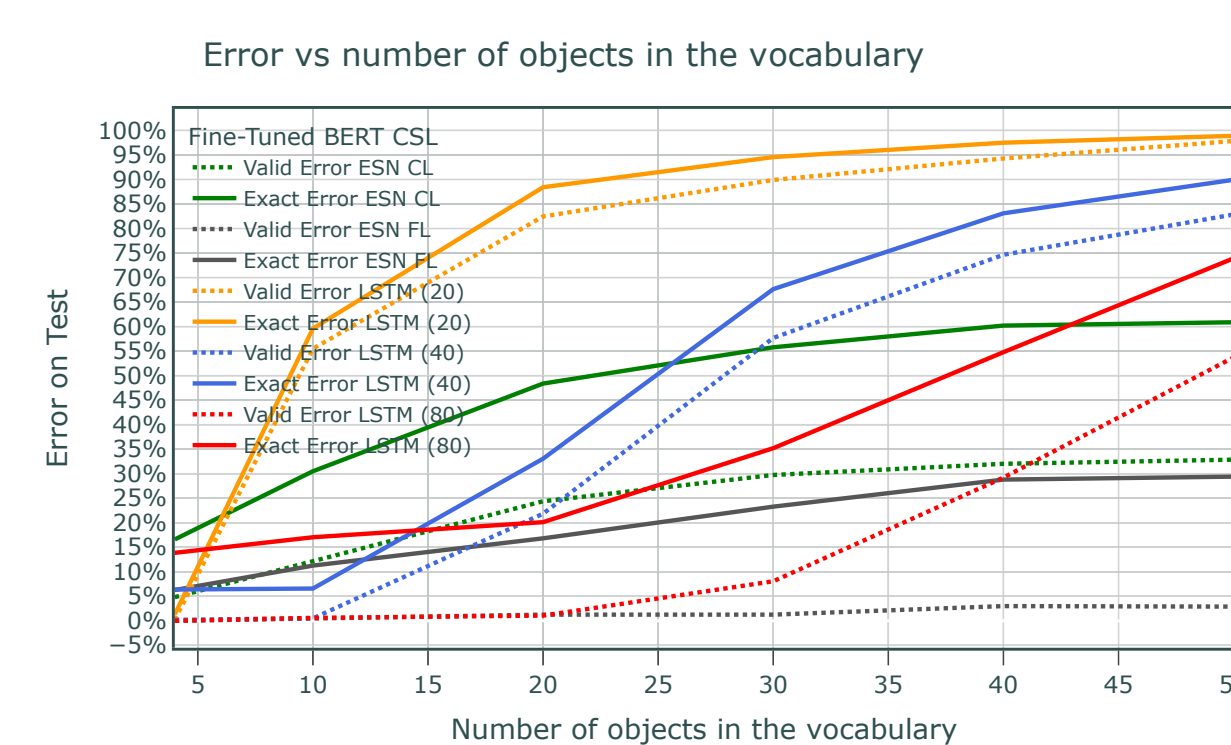


Figure 3: Juven's data Fine-Tuned BERT CSL

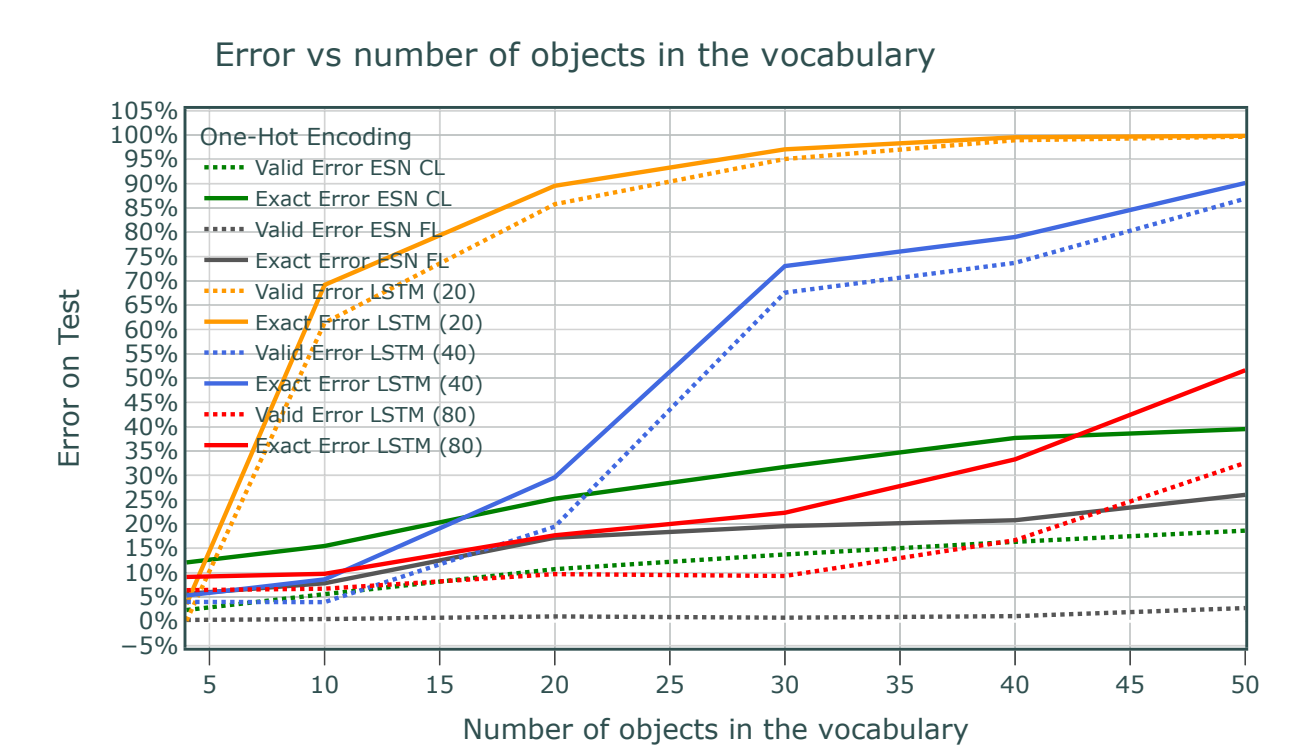


Figure 4: Juven's data: One-Hot Encoding

### Juven's CSL: Qualitative Analysis

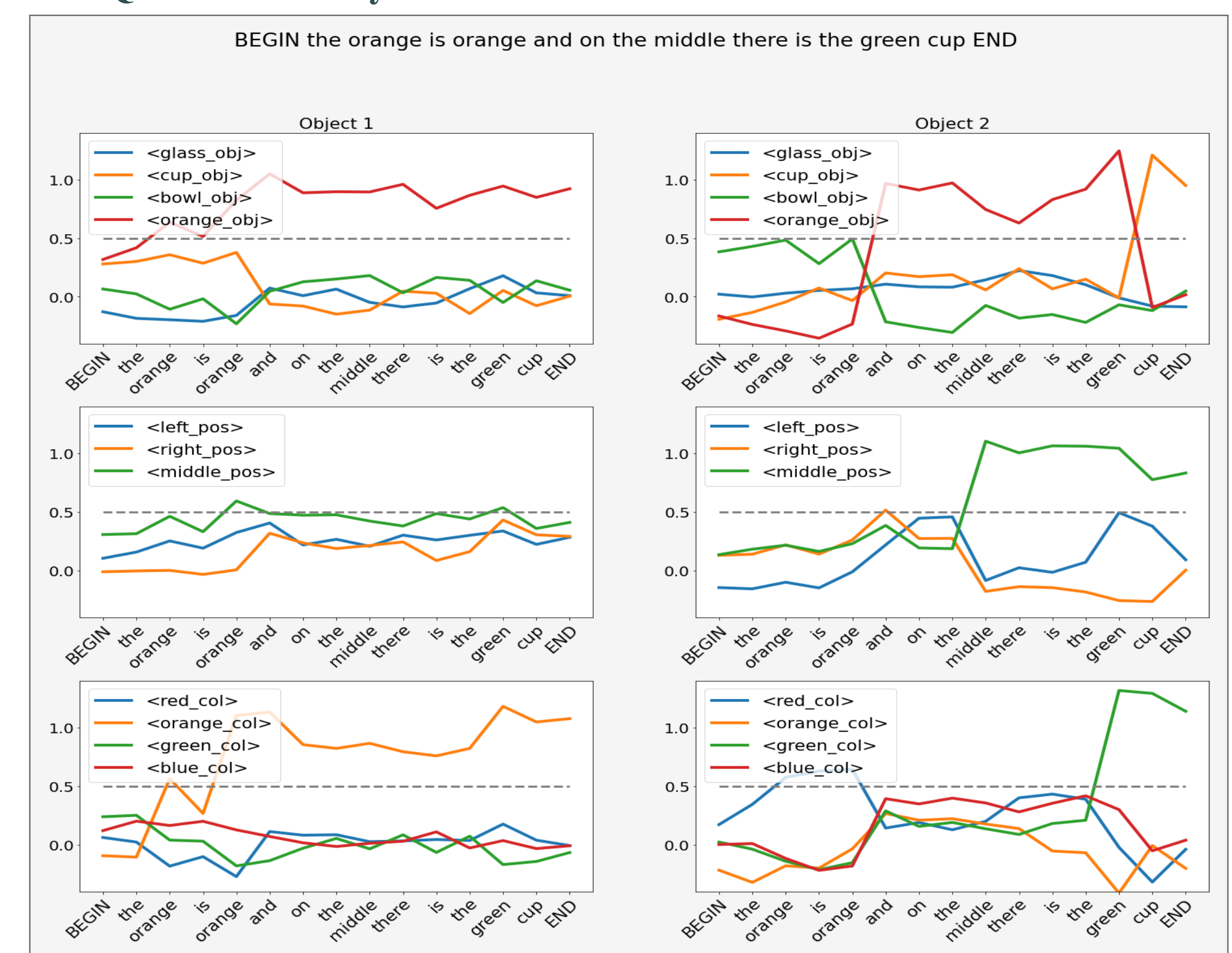


Figure 5: Juven's Data: Output activation of the LSTM + Fine-Tuned BERT CSL

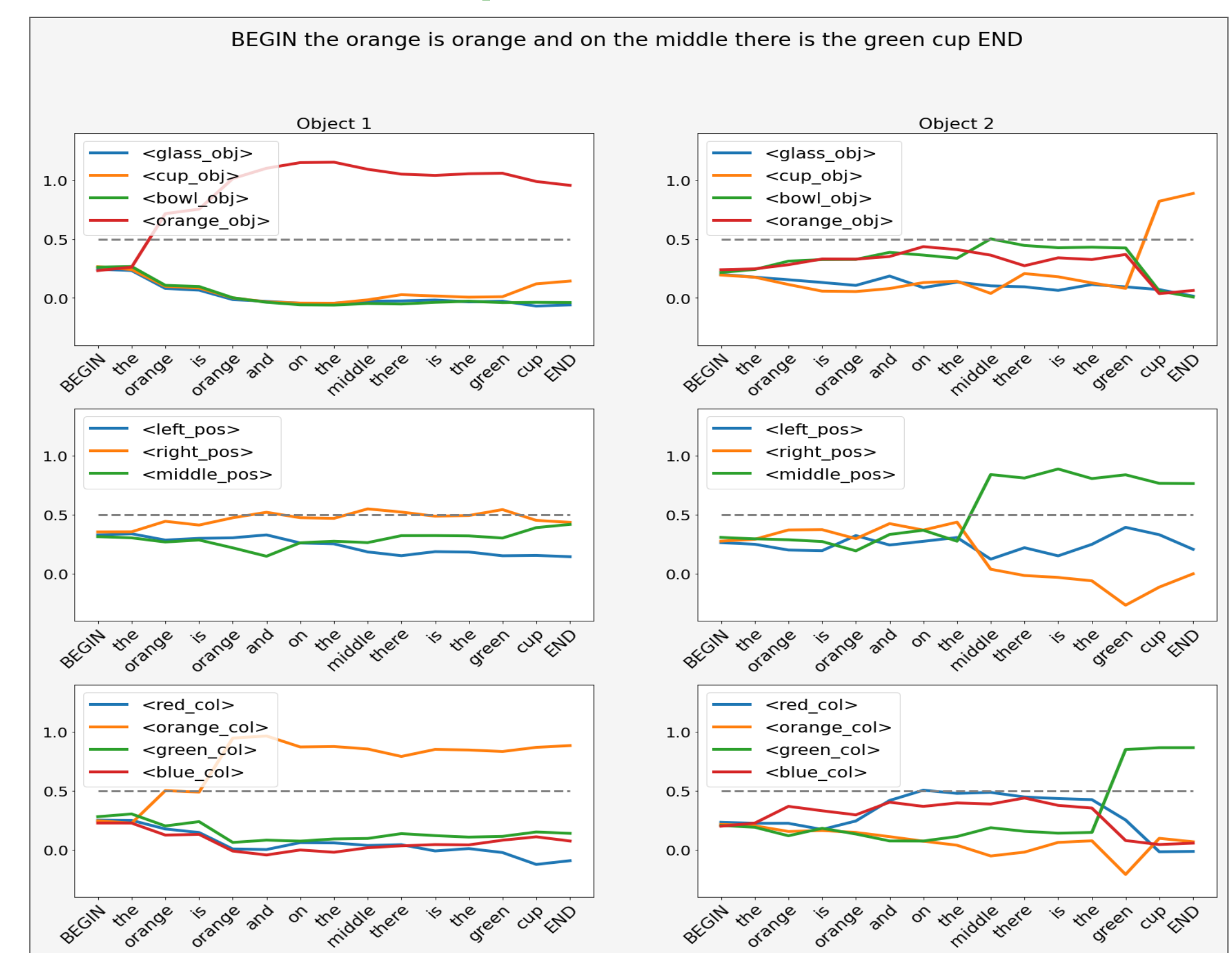


Figure 6: Juven's Data: Output activation of the ESN + BERT CSL.

## Discussion

- We compare the ability of ESNs and LSTMs to learn to parse sentences via imperfect supervision (cross-situational learning)
- These experiments yield the following insights: (i) ESNs generalize better than LSTMs when the vocabulary size increases (for a comparable number of trained parameters); (ii) fine-tuned BERT representation (i.e. BERT CSL) is the best representation among all models;
- In future work, we will investigate how to transfer this surprisingly good ESN generalizing performance by adding gating mechanisms to ESNs and attention mechanisms.