



HAL
open science

Spacetime Trefftz-DG formulation for Wave Propagation using Tent-Pitching Meshes

Vinduja Vasanthan, H el ene Barucq, Henri Calandra, Julien Diaz

► **To cite this version:**

Vinduja Vasanthan, H el ene Barucq, Henri Calandra, Julien Diaz. Spacetime Trefftz-DG formulation for Wave Propagation using Tent-Pitching Meshes. *Eccomas Congress 2020 & WCCM 2020 - European Congress on Computational Methods in Applied Sciences and Engineering & 14th World Congress in Computational Mechanics*, Jan 2021, Paris, France. hal-03533374

HAL Id: hal-03533374

<https://inria.hal.science/hal-03533374v1>

Submitted on 18 Jan 2022

HAL is a multi-disciplinary open access archive for the deposit and dissemination of scientific research documents, whether they are published or not. The documents may come from teaching and research institutions in France or abroad, or from public or private research centers.

L'archive ouverte pluridisciplinaire **HAL**, est destin ee au d ep ot et  a la diffusion de documents scientifiques de niveau recherche, publi es ou non,  emanant des  tablissements d'enseignement et de recherche fran ais ou  trangers, des laboratoires publics ou priv es.

The Inria logo is written in a red, cursive script.

Depth Imaging Partnership
DIP



Virtual Congress 11-15 January, 2021
ECCOMAS CONGRESS 2020 & 14TH WCCM

Spacetime Trefftz-DG formulation for Wave Propagation using Tent-Pitching Meshes

V. Vasanthan^{1,*}, H. Barucq¹, H. Calandra², J. Diaz¹, E. Shishenina²

1. Project-Team Magique-3D, Inria, E2S UPPA, CNRS, France,
`firstname.lastname@inria.fr`

2. Total R&D, France, `firstname.lastname@total.com`

- Aim of our work ?
 - ↪ to develop a spacetime method with the Tent-Pitcher algorithm, for wave problems.
- Why ?
 - ↪ gain precision,
 - ↪ reduce computational time.
- What kind of problems ?
 - ↪ acoustic,
 - ↪ elastodynamic,
 - ↪ elasto-acoustic wave propagation systems.
- What kind of methods ?
 - ↪ Trefftz-Discontinuous Galerkin methods with Tent-Pitching.
- What kind of basis ?
 - ↪ polynomial basis functions,
 - ↪ Green's functions.

Acoustic Wave equation

First order acoustic wave equation :

$$\left\{ \begin{array}{ll} \frac{1}{c^2 \rho} \frac{\partial p}{\partial t} + \nabla \cdot \mathbf{v} = f & \text{in } \Omega, \\ \rho \frac{\partial \mathbf{v}}{\partial t} + \nabla p = 0 & \text{in } \Omega, \\ \mathbf{v}(\cdot, 0) = \mathbf{v}_0, p(\cdot, 0) = p_0 & \text{in } \mathcal{D}, \\ \mathbf{v} \cdot \mathbf{n}_x = 0 & \text{in } \partial \mathcal{D} \times \mathcal{I}. \end{array} \right. \quad \begin{array}{l} \Omega = \mathcal{D} \times \mathcal{I} \\ \mathcal{I} = [0, T] \end{array}$$

with

$p = p(\mathbf{x}, t)$, pressure,

$\mathbf{v} = \mathbf{v}(\mathbf{x}, t)$, velocity,

$f = f(\mathbf{x}, t)$, source term,

$c = c(\mathbf{x})$, acoustic wave
propagation speed,

$\rho = \rho(\mathbf{x})$, density.

- Basis functions are local solutions of the initial PDEs
- We work on the skeleton of the mesh only
- Requires low number of degrees of freedom,
- Characteristics of the solution are included in the discrete solution
- Basis functions are discontinuous → Discontinuous Galerkin discretization
- Flexibility in choice of basis functions (plane waves, Green's function...)
- Implicit scheme

Variational formulation

\mathcal{T}_h : non-overlapping space-time mesh composed of Lipschitz smooth elements $K \in \Omega$

$$V^h(\mathcal{T}_h) = \{\phi \in L^2(Q), \phi|_K \in H^1(K)\}$$

Trefftz space

$$\mathbf{T}(\mathcal{T}_h) = \{(\mathbf{w}, q) \in V^h(\mathcal{T}_h)^d \times V^h(\mathcal{T}_h) \mid \\ \rho \frac{\partial \mathbf{w}}{\partial t} + \nabla q = 0 \text{ and } \frac{1}{c^2 \rho} \frac{\partial q}{\partial t} + \operatorname{div} \mathbf{w} = 0\}$$

Discrete Trefftz space :

$$\mathbf{T}^p(\mathcal{T}_h) = \{(\mathbf{w}, q) \in \mathbf{T}(\mathcal{T}_h), (\mathbf{w}, q)|_K \in \mathbb{P}^p(K)^d \times \mathbb{P}^p(K)\}$$

On \mathcal{F}_h^Q , the internal element faces, we have :

$$\begin{aligned}\{\{p\}\} &= \frac{1}{2}(p^- + p^+), \\ \llbracket p \rrbracket_t &= p^- \mathbf{n}_x^- + p^+ \mathbf{n}_x^+, \\ \llbracket p \rrbracket_x &= p^- n_t^- + p^+ n_t^+, \\ \{\{\mathbf{v}\}\} &= \frac{1}{2}(\mathbf{v}^- + \mathbf{v}^+), \\ \llbracket \mathbf{v} \rrbracket_t &= \mathbf{v}^- \cdot n_t^- + \mathbf{v}^+ \cdot n_t^+, \\ \llbracket \mathbf{v} \rrbracket_x &= \mathbf{v}^- \cdot \mathbf{n}_x^- + \mathbf{v}^+ \cdot \mathbf{n}_x^+.\end{aligned}$$

\mathcal{F}_h^D : boundary element faces $\partial D \times I$

\mathcal{F}_h^0 : initial time element faces $D \times \{0\}$

\mathcal{F}_h^T : final time element faces $D \times \{T\}$

Variational formulation

Seek $(\mathbf{v}_h, p_h) \in \mathbf{T}^p(\mathcal{T}_h)$ such that, $\forall(\mathbf{w}, q) \in \mathbf{T}^p(\mathcal{T}_h)$, it holds true :

$$\begin{aligned} & \int_{\mathcal{F}_h^Q} \left[\frac{1}{c^2 \rho} \{ \{ p_h \} \} [q]_t + \rho \{ \{ \mathbf{v}_h \} \} \cdot [\mathbf{w}]_t + \{ \{ p_h \} \} [\mathbf{w}]_x + \rho \{ \{ \mathbf{v}_h \} \} \cdot [q]_x \right] ds \\ & + \int_{\mathcal{F}_h^Q} \left[\alpha_1 [\mathbf{v}_h]_x [\mathbf{w}]_x + \beta_1 [p_h]_x [q]_x + \alpha_2 \rho [\mathbf{v}_h]_t \cdot [\mathbf{w}]_t + \frac{\beta_2}{c^2 \rho} [p_h]_t [q]_t \right] ds \\ & + \int_{\mathcal{F}_h^T} \left[\frac{1}{c^2 \rho} p_h q + \rho \mathbf{v}_h \cdot \mathbf{w} \right] ds + \int_{\mathcal{F}_h^D} \left[p_h \mathbf{w} \cdot \mathbf{n}_x + \alpha_1 (\mathbf{v}_h \cdot \mathbf{n}_x) (\mathbf{w} \cdot \mathbf{n}_x) \right] ds \\ & - \left(\frac{1}{2} - \beta_2 \right) \int_{\mathcal{F}_h^0} \frac{1}{c^2 \rho} p_h q ds - \left(\frac{1}{2} - \alpha_2 \right) \int_{\mathcal{F}_h^0} \rho \mathbf{v}_h \cdot \mathbf{w} ds = \\ & + \left(\frac{1}{2} + \beta_2 \right) \int_{\mathcal{F}_h^0} \frac{1}{c^2 \rho} p_0 q ds + \left(\frac{1}{2} + \alpha_2 \right) \int_{\mathcal{F}_h^0} \rho \mathbf{v}_0 \cdot \mathbf{w} ds \end{aligned}$$

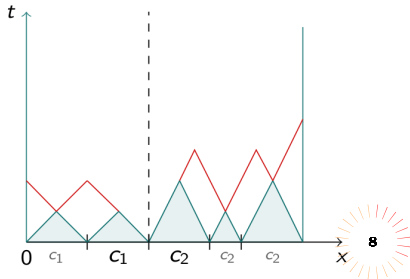
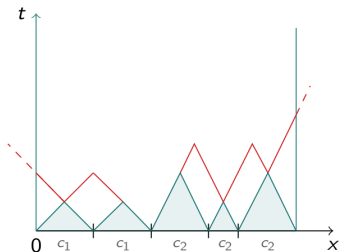
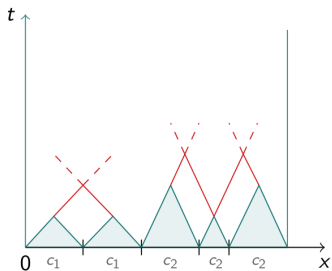
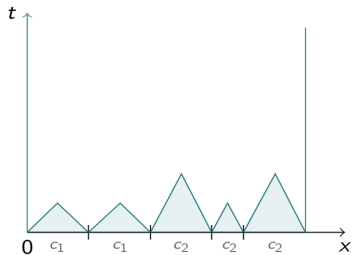
How to reduce computational costs ?

□ solve element-by-element if mesh respects constraints

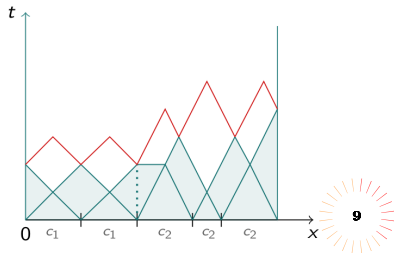
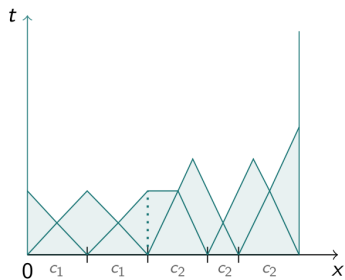
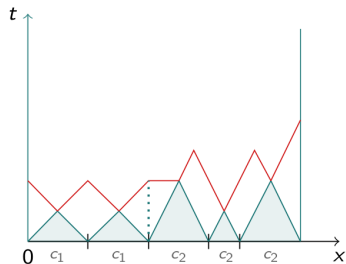
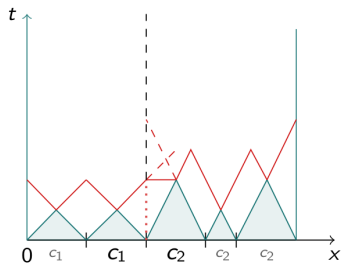
↳ Tent-Pitcher algorithm

- introduced for hyperbolic problems in spacetime domain,
- consists in building a causal mesh, which respects the wave propagation speed,
- conducive to parallel computing.

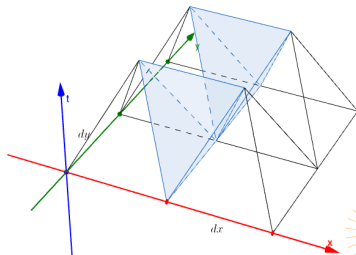
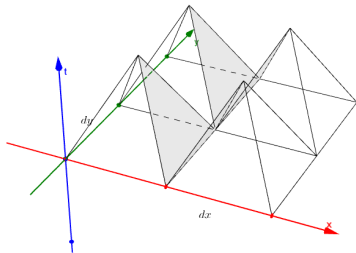
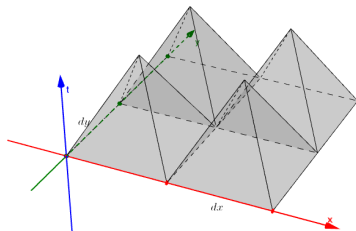
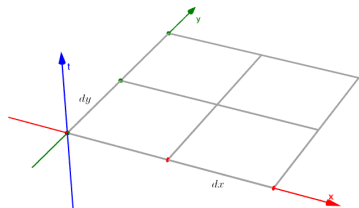
Tent-pitching process 1d+t



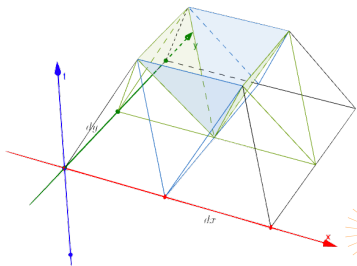
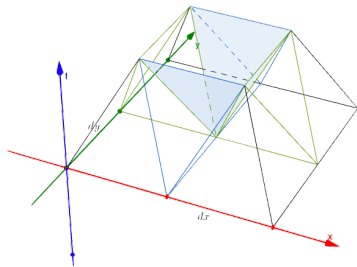
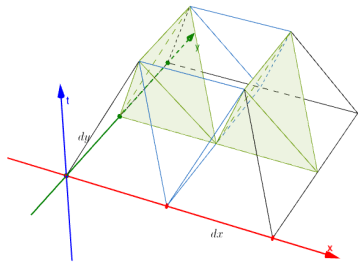
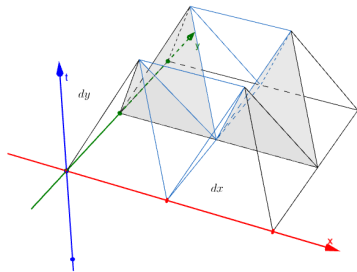
Tent-pitching process 1d+t



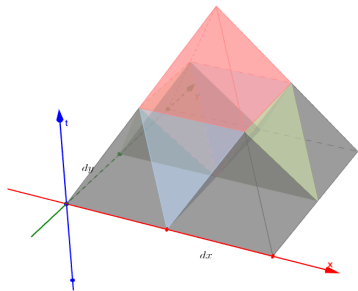
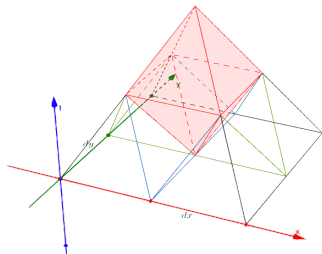
Tent-pitching process $2d+t$



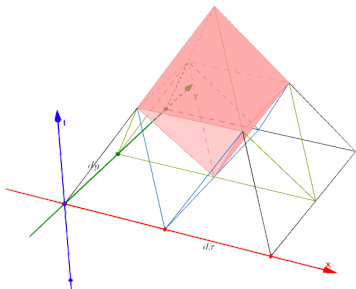
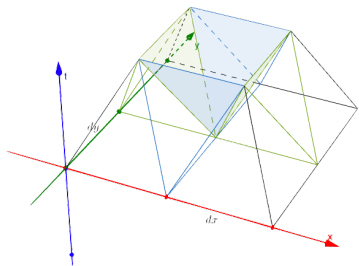
Tent-pitching process 2d+t



Tent-pitching process $2d+t$



Tent-pitching process



$$\begin{aligned}
 & -\left(\frac{1}{2} + \beta_2\right) \int_{\mathcal{F}_h^{in}} \frac{1}{c^2 \rho} p_h^{in} q n_t \\
 & -\left(\frac{1}{2} + \alpha_2\right) \int_{\mathcal{F}_h^{in}} \rho \mathbf{v}_h^{in} \cdot \mathbf{w} n_t \\
 & -\frac{1}{2} \int_{\mathcal{F}_h^{in}} p_h^{in} \mathbf{w} \cdot \mathbf{n}_x + q \mathbf{v}_h^{in} \cdot \mathbf{n}_x \\
 & = \\
 & \int_{\mathcal{F}_h^{out}} \frac{1}{c^2 \rho} p_h q n_t + \rho \mathbf{v}_h \cdot \mathbf{w} n_t + p_h \mathbf{w} \cdot \mathbf{n}_x + q \mathbf{v}_h \cdot \mathbf{n}_x \\
 & + \left(\frac{1}{2} - \beta_2\right) \int_{\mathcal{F}_h^{in}} \frac{1}{c^2 \rho} p_h q n_t + \left(\frac{1}{2} - \alpha_2\right) \int_{\mathcal{F}_h^{in}} \rho \mathbf{v}_h \cdot \mathbf{w} n_t \\
 & + \frac{1}{2} \int_{\mathcal{F}_h^{in}} p_h \mathbf{w} \cdot \mathbf{n}_x + q \mathbf{v}_h \cdot \mathbf{n}_x
 \end{aligned}$$

- Neumann boundary condition

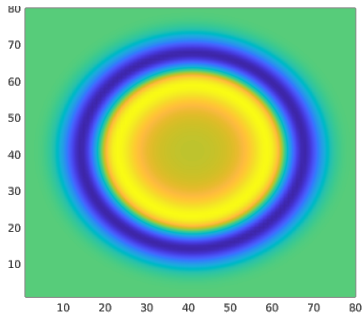


Figure: Pressure at time $t=0.308$ with Trefftz-DG+Tent-Pitching

$$CPU_{exact} = 20 \times CPU_{approx}.$$

- polynomial basis functions

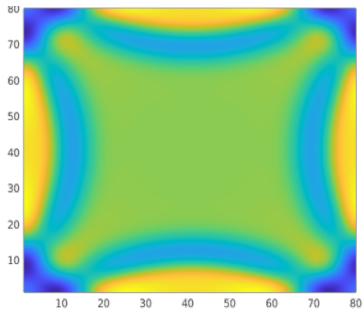


Figure: Pressure at time $t=0.616$ with Trefftz-DG+Tent-Pitching

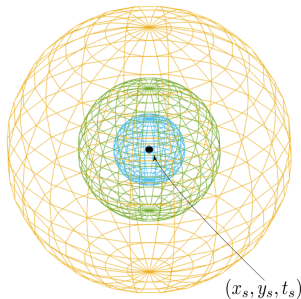
$$CPU_{approx} = 10 \times CPU_{tent-pitch}.$$

- Boundary Elements Method (BEM) consists in finding the solution of a PDE, thanks to the solution on the boundary of the domain :
 - ✓ only the boundary has to be discretized,
 - ✗ need to determine fundamental solutions beforehand,
 - ✗ have to compute complex singular integrals,
 - ✗ meshes are hard to build.

- Method of Fundamental Solutions (MFS) introduced as alternative to BEM :
 - ✓ no need to compute singular integrals,
 - ✓ meshfree method,
 - ✗ but we also need fundamental solutions, since the solution is approximated by a linear combination of these

Green's function as basis

$$\begin{aligned}G_p(x, y, t) &= \frac{1}{\sqrt{(t-t_s)^2 - (x-x_s)^2 - (y-y_s)^2}}, \\G_{v_x}(x, y, t) &= \frac{(t-t_s)(x-x_s)}{\sqrt{(t-t_s)^2 - (x-x_s)^2 - (y-y_s)^2}}, \\G_{v_y}(x, y, t) &= \frac{(t-t_s)(y-y_s)}{\sqrt{(t-t_s)^2 - (x-x_s)^2 - (y-y_s)^2}}.\end{aligned}$$



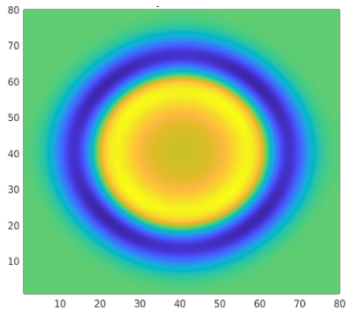


Figure: Pressure at time $t=0.308$
with Green's functions

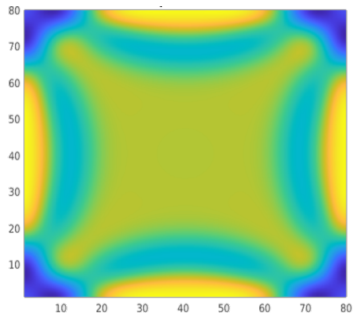
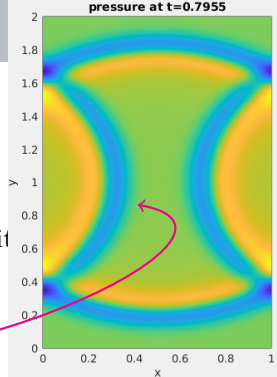


Figure: Pressure at time $t=0.616$
with Green's functions

Boundary Conditions

- In numerical simulations, cannot work in infinite domain
 - ↳ we truncate the domain
 - ↳ it creates reflections !



- Solution : introduce appropriate boundary conditions
 - ↳ Absorbing Boundary Conditions
 - ↳ Perfectly Matched Layers

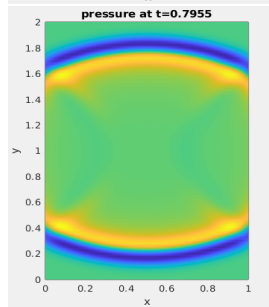
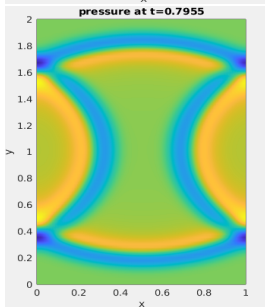
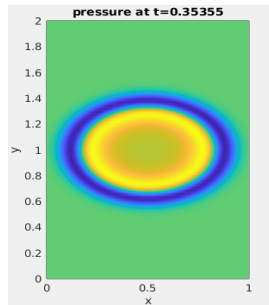
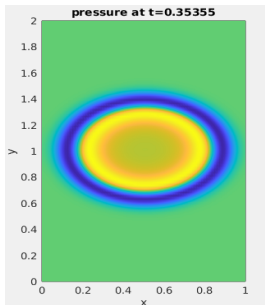
1st order Absorbing Boundary Conditions

- First order ABC for acoustic wave equation on absorbing boundary :

$$\frac{\partial p}{\partial n} = \frac{1}{c} \frac{\partial p}{\partial t} \text{ on } \Gamma .$$

- Here, use of Green's functions as ABC.

Results



Perfectly Matched Layers

$$\begin{cases} \rho \frac{\partial u}{\partial t} + \frac{\partial p}{\partial x} - \frac{\sigma}{i\omega + \sigma} \frac{\partial p}{\partial x} = 0, \\ \rho \frac{\partial v}{\partial t} + \frac{\partial p}{\partial y} = 0, \\ \frac{1}{c^2 \rho} \frac{\partial p}{\partial t} + \frac{\partial u}{\partial x} + \frac{\partial v}{\partial y} - \frac{\sigma}{i\omega + \sigma} \frac{\partial u}{\partial x} = 0. \end{cases}$$

Modified Green's functions :

$$G_p^{pml}(\mathbf{x}, t) = \exp(-A(\mathbf{x}, t)) \cos(B(\mathbf{x}, t)) G(\mathbf{x}, t)$$

$$A(\mathbf{x}, t) = \cos(\theta(\mathbf{x})) I(\mathbf{x}) \frac{t}{r(\mathbf{x})}$$

$$B(\mathbf{x}, t) = \sin(\theta(\mathbf{x})) I(\mathbf{x}) \sqrt{\frac{t^2}{r(\mathbf{x})^2} - \frac{1}{c^2}}$$

$$I(\mathbf{x}) = \int_0^x \sigma(\mathbf{x}) dx$$

Prospects

- Parallelization
- Extend to unstructured meshes
- Extend 2D to 3D
- Consider adaptive meshes & local-time stepping

References

Bérenger.

A perfectly matched layer for the absorption of electromagnetic waves.

Journal of Computational Physics, 114(2):185 – 200, 1994.

Björn Engquist and Andrew Majda.

Absorbing boundary conditions for numerical simulation of waves.

Proceedings of the National Academy of Sciences, 74(5):1765–1766, 1977.

I. Herrera.

Trefftz method: A general theory.

Eq., 16:561–580, 11 2000.

Ralf Hiptmair, Andrea Moiola, and Ilaria Perugia.

A survey of trefftz methods for the helmholtz equation.

06 2015.

V.D. Kupradze and M.A. Aleksidze.

An approximate method of solving certain boundary-value problems.

Soobšč. Akad. Nauk Gruzin. SSR, 30:529–536, 01 1963.

Rudolf Mathon and R.L. Johnston.

The approximate solution of elliptic boundary-value problems by fundamental solutions.

SIAM Journal on Numerical Analysis, 14, 09 1977.

Ilaria Perugia, Joachim Schöberl, Paul Stocker, and Christoph Wintersteiger.

Tent pitching and trefftz-dg method for the acoustic wave equation.

Computers & Mathematics with Applications, 2020.

Elvira Shishenina.

Space-Time Discretization of Elasto-Acoustic Wave Equation in Polynomial Trefftz-DG Bases.

PhD thesis, 2018.

Erich Trefftz.

Ein gegenstück zum ritzschen verfahren.

In *Proc. 2nd Int. Cong. Appl. Mech. Zurich*, pages 131–137, 1926.

Alper Üngör and Alla Sheffer.

Tent-pitcher: A meshing algorithm for space-time discontinuous galerkin methods.

In *In proc. 9th int'l. meshing roundtable*, pages 111–122, 01 2000.

Thank you for your attention !
vinduja.vasanthan@inria.fr