



HAL
open science

Perfusion Index: Physical Principles, Physiological Meanings and Clinical Implications in Anaesthesia and Critical Care

Maxime Coutrot, Emmanuel Dudoignon, Jona Joachim Md, Etienne Gayat,
Fabrice Vallee, François Depret

► To cite this version:

Maxime Coutrot, Emmanuel Dudoignon, Jona Joachim Md, Etienne Gayat, Fabrice Vallee, et al.. Perfusion Index: Physical Principles, Physiological Meanings and Clinical Implications in Anaesthesia and Critical Care. *Anaesthesia Critical Care & Pain Medicine*, 2021. hal-03475091

HAL Id: hal-03475091

<https://inria.hal.science/hal-03475091v1>

Submitted on 10 Dec 2021

HAL is a multi-disciplinary open access archive for the deposit and dissemination of scientific research documents, whether they are published or not. The documents may come from teaching and research institutions in France or abroad, or from public or private research centers.

L'archive ouverte pluridisciplinaire **HAL**, est destinée au dépôt et à la diffusion de documents scientifiques de niveau recherche, publiés ou non, émanant des établissements d'enseignement et de recherche français ou étrangers, des laboratoires publics ou privés.

Perfusion Index: Physical Principles, Physiological Meanings and Clinical Implications in Anaesthesia and Critical Care

Short title: Clinical Usefulness of Perfusion Index

Maxime COUTROT MD^{1,4}, Emmanuel DUDOIGNON MD^{1,2*}, Jona JOACHIM MD¹, Etienne GAYAT MD, PhD^{1,2,3,4}, Fabrice VALLEE MD, PhD^{1,2,3,4,6,7}, François DEPRET MD, PhD^{1,2,3,4,5}

(1) AP-HP, GH St-Louis-Lariboisière, Department of Anaesthesiology and Critical Care and Burn Unit, Paris, France

(2) University Paris Diderot, France

(3) UMR INSERM 942, Institut National de la Santé et de la Recherche Médicale (INSERM)

(4) FHU PROMICE, Paris, France

(5) F-CRIN INICRCT network- Paris, France

(6) Inria, France

(7) LMS, Ecole Polytechnique, CNRS, Institut Polytechnique de Paris, France

***Corresponding author:** Emmanuel DUDOIGNON

Department of Anaesthesiology and Critical Care and Burn Unit, Saint-Louis Hospital, 1, Avenue Claude Vellefaux, Paris, France

Email: emmanuel.dudoignon@aphp.fr

Keywords: Perfusion index; Haemodynamic monitoring; non-invasive monitoring; photoplethysmography

Disclosure of funding: None

Conflicts of interest:

A patent application (n° PCT IB2009/006903) is pending on variations of P_cCO₂ and PI during Heating Challenge. The patent belongs to the Assistance Publique-Hôpitaux de Paris (France).

Etienne Gayat has received Consulting Fees from Magnisense, research support from Sphingotec, Deltex Medical and Retia Medical.

Fabrice Vallée has received research support from Radiometer, Deltex Medical and Retia Medical.

François Dépret has received research grants from the French Ministry of Health, SFAR (Société française d'anesthésie et de réanimation), the ESICM (European Society of Intensive Care Medicine), and lecture fees Sedana medical.

Authors' contribution:

Maxime Coutrot: this author drafted and approved the final version of the manuscript

Emmanuel Dudoignon: this author drafted and approved the final version of the manuscript

Jona Joachim: this author drafted and approved the final version of the manuscript

Etienne Gayat: this author drafted and approved the final version of the manuscript

Fabrice Vallée: this author drafted and approved the final version of the manuscript

François Dépret: this author drafted and approved the final version of the manuscript

All the authors have drafted and approved the final version of the manuscript.

Glossary of Terms:

PPG: photoplethysmography

PI: perfusion index

PVI: pleth variability index

AC: alternating current

DC: direct current

SV: stroke volume

MAP: mean arterial pressure

ICU: intensive care unit

ScvO₂: central venous oxygen saturation

P(v-a)CO₂: arteriovenous carbon dioxide gradient

PLR: passive leg raising

CI: confidence interval

Acknowledgement

The authors would sincerely thank Dr Colleen Breslin and Isabelle Taufflieb for their proofreading as well as their advice for writing this review

Abstract

1
2
3 Photoplethysmography (PPG) has been extensively used for pulse oximetry monitoring in
4
5 anaesthesia, perioperative and intensive care. However, some components of PPG signal
6
7 have been employed for other purposes, such as non-invasive haemodynamic monitoring.
8
9 Perfusion index (PI) is derived from PPG signal and represents the ratio of pulsatile on non-
10
11 pulsatile light absorbance or reflectance of the PPG signal. PI determinants are complex and
12
13 interlinked, involving and reflecting the interaction between peripheral and central
14
15 haemodynamic characteristics, such as vascular tone and stroke volume. Recently, several
16
17 studies have shed light on the interesting performances of this variable, especially assessing
18
19 regional or neuraxial block success, and haemodynamic monitoring in anaesthesia,
20
21 perioperative and intensive care. Nevertheless, no review has yet been published concerning
22
23 the interest of PI in these fields.
24
25
26
27
28
29
30

31
32 In this narrative review will be exposed first the physiological and pathophysiological
33
34 determinants of PI, and then the mean to measure this value as well as its potential
35
36 limitations. In the second part, the existing data concerning usefulness of PI in different
37
38 clinical settings such as operating theatres, intensive care units and emergency departments
39
40 will be presented and discussed. Finally, the perspectives concerning the use of PI and
41
42 mentioned aspects that should be explored regarding this tool will be underlined.
43
44
45
46
47
48
49
50
51
52
53
54
55
56
57
58
59
60
61
62
63
64
65

1) Introduction

In the 1970s, following previous works, Takuo Aoyagi, who passed away on the 18th of April 2020, developed pulse oximetry using red and infrared lights transmission through tissues [1].

Increasing interest in non-invasive monitoring of macrohaemodynamic and microcirculation has risen in anaesthesia, perioperative and critical care. Photoplethysmography (PPG) signal, which was used during decades only to monitor oxygen saturation, represents nowadays an interesting tool in haemodynamic monitoring.

PPG is a non-invasive tool, cheap, fast, and simple to use. However, interpretation of PPG data can be challenging: haemodynamic monitoring using PPG signal initially suffered from a large lack of knowledge and misunderstanding of its determinants, resulting in an incorrect use of this multifactorial device. However, analysis of PPG signal has benefitted from regained interest in the past years and the usefulness of PPG has been highlighted by several works in anaesthesia, perioperative and critical care [2–4].

Among different components of PPG signal, perfusion index (PI), which represents the proportion of the pulsatile part of PPG, has been widely studied and stands as a promising tool for physicians. A good understanding of the principles of PPG and PI determinants as well as the knowledge of its limits is therefore essential to optimise its correct use and performance. Physical principles and the physiological determinants of PI will be explained thereafter in this review.

Several reviews have been proposed on PPG, notably about PI respiratory variations, commonly referred to as Pleth Variability Index (PVI), and its applications [3,5–7]. However,

1 none of above-mentioned reviews focused on PI itself. Additionally, several new data have
2 been published since.
3

4
5
6 This review covers the physiological and technical aspects of PPG and PI that clinicians need
7
8 to understand and presents the clinical usefulness of PI in the operating theatre,
9
10 perioperative and critical care.
11
12

13 14 15 16 17 18 **2) How is Perfusion Index measured?** 19

20 21 **2.1 Principle of photoplethysmography** 22

23
24
25 The principle of conventional PPG is based on indirect measurement of tissue volume
26
27 variations by absorbance variations of light beams through this tissue. The oximeter probe
28
29 generates incident red and ultra-red light beams, whose transmitted intensities are
30
31 transformed into an electrical current by a photodetector, after penetrating a tissue (**Figure**
32
33
34
35 **1**) [8,9].
36

37
38
39 Another PPG modality (PPG by reflection) uses reflection properties of the light in the tissue,
40
41 according to the same principle. The photodetector is then placed next to the light source to
42
43 measure the reflectance of the incident beams [10].
44

45
46
47 Usually, two wavelengths are used for PPG: red light (660 nm) and infrared light (940 nm),
48
49 mainly absorbed by deoxyhaemoglobin and oxyhaemoglobin, respectively. The PPG curve is
50
51 obtained with infrared light absorption variations. However some PPG devices use one, or
52
53 more often more than two wavelengths [11].
54
55
56
57
58
59
60
61
62
63
64
65

2.2 PI components: alternating and direct currents

1
2
3 Light absorption varies across the cardiac cycle. The absorption is maximal during the
4
5
6 systole, reflecting the dilatation of vessels under the systolic pressure, *i.e.*, the increase of
7
8
9 arterial blood volume under the light source. The signal received by the photodetector is
10
11 then decomposed into pulsatile and non-pulsatile signals. Pulsatile variations in light
12
13 absorption, during systole, are commonly referred to as “alternating current” (AC). AC
14
15 represents variations of absorbance or reflectance of the incident light beams due to
16
17
18 pulsatile vessels under arterial pressure variations, *i.e.* the sum of the variations of the
19
20
21 diameters of pulsatile vessels through which the light beams pass. AC then represents a
22
23
24 volume variation measurement. It is important to underline that AC is therefore not a flow
25
26
27 measurement in those vessels but an indirect measurement of the arterial volume variation
28
29 during the cardiac cycle.
30

31
32 The PPG curve displayed on actual monitors represents AC, derived from the infrared light
33
34
35 signal, after signal processing. Restitution of AC requires computer processing of the raw
36
37
38 signal received by the photodetector by computer filters to reduce signal artifacts [8,12,13].
39
40 These manufacturer-dependent algorithms can significantly deform the PPG curve from one
41
42
43 manufacturer to another [8,9].
44

45
46 On the other hand, continuous absorption is referred to as “direct current” (DC), from which
47
48
49 AC varies. DC corresponds to light absorption from other tissues, such as non-pulsatile
50
51
52 capillaries and venous vessels, skin, soft tissues, and bones. DC is not displayed in current
53
54
55 practice on usual oximeter’s monitors.
56
57
58
59
60
61
62
63
64
65

2.3 PI calculation: alternating and direct currents ratio

1
2
3 PI represents the ratio of pulsatile light absorption on continuous light absorption, *i.e.*, the
4 ratio AC/DC (**Figure 1**). PI, often referred to as “peripheral PI” was initially used as a quality
5 signal indicator for pulse oximetry [4,14]. However, PI represents the local blood volume
6 variation during systole, and varies according to the systemic and local haemodynamic
7 status. Hence, PI can be used for non-invasive haemodynamic monitoring.
8
9

2.4 Physiological value of PI

10
11 In healthy awake volunteers, when measured at the finger, the mean PI values (\pm standard
12 deviation) described in two studies were $2.2\% \pm 2.0$ and $3.5\% \pm 2.4$ [15,16]. This means that
13 AC represents only around 2% to 3% of DC, and by analogy in vascular physiology, it means
14 that the blood volume under the sensor increases by around 2% at each heartbeat.
15 However, due to the wide variations in normal values in healthy volunteer (from $< 1\%$ to $>$
16 10%), it is difficult to propose a reliable normal value of this parameter.
17
18

19
20 Determinants of PI are numerous and complex. When measured in a peripheral site, both AC
21 and DC and their ratio, *i.e.*, PI, are the resultants of systemic and local factors, discussed
22 below, and resumed in **Table 1**. The characteristics and main results of discussed studies are
23 detailed in **Supplementary Table 1**.
24
25
26
27
28
29
30
31
32
33
34
35

2.5 Influence of direct current (DC) determinants

36
37 As PI represents the ratio AC/DC, any variation of DC will result in PI variation. Hence, soft
38 tissues or venous compression (*e.g.*, by a finger clip) may decrease DC and increase PI.
39 Likewise, congestion due to global fluid overload would have the opposite consequences.
40
41
42
43
44
45
46
47
48
49
50
51
52
53
54
55
56
57
58
59
60
61
62
63
64
65

1 increase in DC if the limb is in a declive position (venous congestion) and the opposite in a
2 proclive position [3]. Physiologically, DC is also not constant, and small variations are
3
4 observed due to variation of venous return and sympathetic tone in patients spontaneously
5
6 breathing or under mechanical ventilation [17,18]. Similarly, DC may also change in case of
7
8 change in vascular tone, as under action of vasoactive drugs (*i.e.*, decrease of DC under
9
10 increased vascular tone) [19].
11
12
13
14
15

16 **2.6 Alternating current (AC): vascular tone *versus* stroke volume**

17

18
19 Some authors have described PI as a surrogate of vascular tone only. Lima *et al.* showed that
20
21 PI was correlated with central to toe temperature gradient – an accurate surrogate of
22
23 vascular tone [15]. Indeed, PI rapidly increased after local vasodilation induced by plexus or
24
25 epidural anaesthesia, measured in the blocked area. PI was also strongly influenced by
26
27 changes of vascular tone under action of vasopressors in patients under general anaesthesia
28
29 (*i.e.*, decrease in PI secondary to norepinephrine infusion) [20–25].
30
31
32
33
34

35 Indeed, several recent studies suggested that stroke volume (SV) is another important
36
37 determinant of PI. PI was correlated to superior vena cava flow and cardiac output in infants
38
39 [26–28]. Low flow could be associated with increased vascular tone, but such data are not
40
41 presented in these works. Van Genderen *et al.* exposed healthy volunteers to a lower body
42
43 negative pressure [29]. They observed a rapid decrease of PI (from 2.2% [1.6–3.3] to 1.3%
44
45 [0.9–1.7], expressed as median and interquartile), while SV decreased, and skin temperature
46
47 difference between forearm and fingertip did not increase significantly. Lack of significant
48
49 variation in skin temperature gradient between forearm and fingertip may be explained by
50
51 the lack of power of this study (the study population comprised 25 males) or because of
52
53 temperature change inertia. This suggested that PI was not only influenced by local vascular
54
55
56
57
58
59
60
61
62
63
64
65

1 tone but also by SV itself. Another study performed in healthy volunteers showed PI
2 variations induced by body positioning modifications (e.g., Trendelenburg, 45-degree, supine
3 etc.) [30]. The highest values of PI were observed in Trendelenburg position ($7.8 \pm 3.8\%$). On
4 the contrary, PI was the lowest in the sitting position ($4.5 \pm 2.5\%$), suggesting a positive
5 relationship between PI and SV. This has been recently confirmed in a work showing that
6 variation of PI was highly correlated to variation of SV ($r = 0.9$), and mean arterial pressure
7 (MAP) ($r = 0.9$) during head up and down tilt test in patients under anaesthesia with low
8 basal sympathetic tone or reactivity to position-induced hypovolaemia [31]. Additionally,
9 other recent works further discussed, found significant correlation of cardiac index and PI
10 variations after passive leg raising and fluid challenge [32–34]. These works confirmed the
11 major influence of SV on PI, and the complexity of PI variations interpretation, especially in
12 septic shock [35].

13 The respective influence of vascular tone and SV variations in case of vasoplegia are drawn in
14 **Figure 2**, cases **A** and **B**. **Figure 2** case **A** represents moderate vasoplegia (for example
15 intraoperative hypotension secondary to anaesthetic drugs). In this case, the increase of PI
16 (from 5 to 10%) would mainly be the consequence of a fall of arterial vascular tone
17 (secondary to vasodilatation induced by anaesthetic drugs) without substantial SV variations
18 [15,19,25]. In case of severe vasoplegia (**Figure 2** case **B**), such as under general anaesthesia
19 with overdose of anaesthetics leading to a significant decrease in stressed volume, venous
20 return and thus in SV, or in case of surgical bleeding, PI decreases secondarily in comparison
21 to **Figure 2** case **A** despite a low arterial vascular tone. In this case, SV would be the
22 predominant determinant, leading to PI secondary decrease, *i.e.* “hiding” the effect of the
23 decrease of vascular tone, on PI [29–31,33]. However, data are lacking to quantify the
24
25
26
27
28
29
30
31
32
33
34
35
36
37
38
39
40
41
42
43
44
45
46
47
48
49
50
51
52
53
54
55
56
57
58
59
60
61
62
63
64
65

1
2
3
4
5
6
7
8
9
10
11
12
13
14
15
16
17
18
19
20
21
22
23
24
25
26
27
28
29
30
31
32
33
34
35
36
37
38
39
40
41
42
43
44
45
46
47
48
49
50
51
52
53
54
55
56
57
58
59
60
61
62
63
64
65

respective contributions of vascular tone and stroke volume in PI values and interpret its variations in such clinical situations.

On the contrary, as illustrated in the **Figure 2 case C**, in case of hypovolaemia with preserved baroreceptors activation, SV will decrease and vascular tone increase. Both variations of SV and vascular tone will contribute to a decrease of AC. In such conditions, a decrease of DC secondary to the activation of the sympathetic system also participates to the drop of PI, suggesting that the decrease in AC is predominant over the decrease in DC [19,29,30]. Another comparable situation characterised by a low SV and potential increased vascular tone is cardiac failure, where both contribute also to the fall of AC, DC, and PI values (**Figure 2 case D**). In this situation, PI would be typically extremely low PI (< 0.5). After inotropic drugs, an increase in SV would lead to a greater PI value [19].

2.7 Local conditions

PI measurement assesses local perfusion. The PI value varies according to the measurement site, even for clothe sites to a few centimetres [33]. Thus, PI is highly influenced by systemic macrohaemodynamic status as well as local conditions. Since local vascular tone is mainly influenced by thermoregulation and non-thermoregulatory stimuli (*e.g.*, nociception, exercise...) [36,37]. As an example, PPG waveform variation was substantially different between ear and finger after cold exposure [38]. Regional anaesthesia also illustrates the influence of local conditions: the increase in PI measured in the blocked area after regional anaesthesia is the witness of a decrease in local vascular tone, associated with an increase in local blood flow and volume at each heartbeat in the blocked region. Both the decrease in vascular tone and the increase in local blood flow and volume are contributing to the rise of AC and PI values. As for other variations of vascular tone, it is expected that DC also increase

1 in the blocked area, although this has not been studied. In this situation, PI is a tool for local
2 haemodynamic monitoring, but not central haemodynamic. Likewise, many local conditions
3 must be considered to interpret PI value: local compression (soft tissues, veins and/or
4 arteries), outside temperature variations, positions of the limbs or severe arterial
5 abnormalities such as obliterating arteriopathy. In the conditions mentioned above,
6 peripheral PI rather reflects local conditions than the central haemodynamic status [11,27].
7 However, no difference was found in basal PI in volunteers with or without vascular disease
8 (hypertension and diabetes mellitus). On the contrary, macrohaemodynamic status (*i.e.*,
9 cardiac index) can influence PI value depending on the measurement site. Indeed, in infants,
10 PI tends to be higher at the right hand compared to foot for low cardiac output, and
11 inversely for high cardiac output [26]. All these elements suggest the importance of regional
12 perfusion variation secondary to changes of sympathetic response and central
13 haemodynamic status on local PI value.
14
15
16
17
18
19
20
21
22
23
24
25
26
27
28
29
30
31

32 **2.8 Sources of errors and variations of PPG signal**

33
34
35
36
37 One should also be aware of the classic and frequent sources of errors in the measurement
38 of PI. Any extrinsic soft tissues and/or vascular compression could affect AC and/or DC and
39 so the basal value of PI and/or its variations [3]. A common example is the digital
40 compression by the clamp of PPG. The ear and finger PPG sensors are usually fitted with a
41 clip, which prevents venous stasis and its influence on DC and thus on PI. Without a clip,
42 forehead PPG waveform, *i.e.*, AC signal, has been described significantly affected by a strong
43 venous signal. Therefore, venous compression by a clip may result in a more reliable arterial
44 waveform [39]. However, the use of an external pressure on the forehead probe with a
45 dedicated headband to suppress the impact of venous pulsation may also result in a more
46
47
48
49
50
51
52
53
54
55
56
57
58
59
60
61
62
63
64
65

1 reliable PPG waveform. Other classical sources of errors or factors that may influence PPG
2 waveform, such as nail polish, obesity, age, gender, ambient lights changes, course artifacts
3 of movement of the probe, or the patient, etc., have been recently pointed out [11].
4
5
6
7
8
9

10 11 **3) Clinical usefulness in Anaesthesia: what are the data?**

12
13
14
15
16
17
18
19
20
21
22
23
24
25
26
27
28
29
30
31
32
33
34
35
36
37
38
39
40
41
42
43
44
45
46
47
48
49
50
51
52
53
54
55
56
57
58
59
60
61
62
63
64
65
66
67
68
69
70
71
72
73
74
75
76
77
78
79
80
81
82
83
84
85
86
87
88
89
90
91
92
93
94
95
96
97
98
99
100
101
102
103
104
105
106
107
108
109
110
111
112
113
114
115
116
117
118
119
120
121
122
123
124
125
126
127
128
129
130
131
132
133
134
135
136
137
138
139
140
141
142
143
144
145
146
147
148
149
150
151
152
153
154
155
156
157
158
159
160
161
162
163
164
165
166
167
168
169
170
171
172
173
174
175
176
177
178
179
180
181
182
183
184
185
186
187
188
189
190
191
192
193
194
195
196
197
198
199
200
201
202
203
204
205
206
207
208
209
210
211
212
213
214
215
216
217
218
219
220
221
222
223
224
225
226
227
228
229
230
231
232
233
234
235
236
237
238
239
240
241
242
243
244
245
246
247
248
249
250
251
252
253
254
255
256
257
258
259
260
261
262
263
264
265
266
267
268
269
270
271
272
273
274
275
276
277
278
279
280
281
282
283
284
285
286
287
288
289
290
291
292
293
294
295
296
297
298
299
300
301
302
303
304
305
306
307
308
309
310
311
312
313
314
315
316
317
318
319
320
321
322
323
324
325
326
327
328
329
330
331
332
333
334
335
336
337
338
339
340
341
342
343
344
345
346
347
348
349
350
351
352
353
354
355
356
357
358
359
360
361
362
363
364
365
366
367
368
369
370
371
372
373
374
375
376
377
378
379
380
381
382
383
384
385
386
387
388
389
390
391
392
393
394
395
396
397
398
399
400
401
402
403
404
405
406
407
408
409
410
411
412
413
414
415
416
417
418
419
420
421
422
423
424
425
426
427
428
429
430
431
432
433
434
435
436
437
438
439
440
441
442
443
444
445
446
447
448
449
450
451
452
453
454
455
456
457
458
459
460
461
462
463
464
465
466
467
468
469
470
471
472
473
474
475
476
477
478
479
480
481
482
483
484
485
486
487
488
489
490
491
492
493
494
495
496
497
498
499
500
501
502
503
504
505
506
507
508
509
510
511
512
513
514
515
516
517
518
519
520
521
522
523
524
525
526
527
528
529
530
531
532
533
534
535
536
537
538
539
540
541
542
543
544
545
546
547
548
549
550
551
552
553
554
555
556
557
558
559
560
561
562
563
564
565
566
567
568
569
570
571
572
573
574
575
576
577
578
579
580
581
582
583
584
585
586
587
588
589
590
591
592
593
594
595
596
597
598
599
600
601
602
603
604
605
606
607
608
609
610
611
612
613
614
615
616
617
618
619
620
621
622
623
624
625
626
627
628
629
630
631
632
633
634
635
636
637
638
639
640
641
642
643
644
645
646
647
648
649
650
651
652
653
654
655
656
657
658
659
660
661
662
663
664
665
666
667
668
669
670
671
672
673
674
675
676
677
678
679
680
681
682
683
684
685
686
687
688
689
690
691
692
693
694
695
696
697
698
699
700
701
702
703
704
705
706
707
708
709
710
711
712
713
714
715
716
717
718
719
720
721
722
723
724
725
726
727
728
729
730
731
732
733
734
735
736
737
738
739
740
741
742
743
744
745
746
747
748
749
750
751
752
753
754
755
756
757
758
759
760
761
762
763
764
765
766
767
768
769
770
771
772
773
774
775
776
777
778
779
780
781
782
783
784
785
786
787
788
789
790
791
792
793
794
795
796
797
798
799
800
801
802
803
804
805
806
807
808
809
810
811
812
813
814
815
816
817
818
819
820
821
822
823
824
825
826
827
828
829
830
831
832
833
834
835
836
837
838
839
840
841
842
843
844
845
846
847
848
849
850
851
852
853
854
855
856
857
858
859
860
861
862
863
864
865
866
867
868
869
870
871
872
873
874
875
876
877
878
879
880
881
882
883
884
885
886
887
888
889
890
891
892
893
894
895
896
897
898
899
900
901
902
903
904
905
906
907
908
909
910
911
912
913
914
915
916
917
918
919
920
921
922
923
924
925
926
927
928
929
930
931
932
933
934
935
936
937
938
939
940
941
942
943
944
945
946
947
948
949
950
951
952
953
954
955
956
957
958
959
960
961
962
963
964
965
966
967
968
969
970
971
972
973
974
975
976
977
978
979
980
981
982
983
984
985
986
987
988
989
990
991
992
993
994
995
996
997
998
999
1000

PI has been studied in the operating theatre for patients under regional or general anaesthesia in different clinical settings. The characteristics and main results of discussed studies are detailed in **Supplementary Table 1**.

24 **3.1 PI in assessment of regional block success**

27
28
29
30
31
32
33
34
35
36
37
38
39
40
41
42
43
44
45
46
47
48
49
50
51
52
53
54
55
56
57
58
59
60
61
62
63
64
65
66
67
68
69
70
71
72
73
74
75
76
77
78
79
80
81
82
83
84
85
86
87
88
89
90
91
92
93
94
95
96
97
98
99
100
101
102
103
104
105
106
107
108
109
110
111
112
113
114
115
116
117
118
119
120
121
122
123
124
125
126
127
128
129
130
131
132
133
134
135
136
137
138
139
140
141
142
143
144
145
146
147
148
149
150
151
152
153
154
155
156
157
158
159
160
161
162
163
164
165
166
167
168
169
170
171
172
173
174
175
176
177
178
179
180
181
182
183
184
185
186
187
188
189
190
191
192
193
194
195
196
197
198
199
200
201
202
203
204
205
206
207
208
209
210
211
212
213
214
215
216
217
218
219
220
221
222
223
224
225
226
227
228
229
230
231
232
233
234
235
236
237
238
239
240
241
242
243
244
245
246
247
248
249
250
251
252
253
254
255
256
257
258
259
260
261
262
263
264
265
266
267
268
269
270
271
272
273
274
275
276
277
278
279
280
281
282
283
284
285
286
287
288
289
290
291
292
293
294
295
296
297
298
299
300
301
302
303
304
305
306
307
308
309
310
311
312
313
314
315
316
317
318
319
320
321
322
323
324
325
326
327
328
329
330
331
332
333
334
335
336
337
338
339
340
341
342
343
344
345
346
347
348
349
350
351
352
353
354
355
356
357
358
359
360
361
362
363
364
365
366
367
368
369
370
371
372
373
374
375
376
377
378
379
380
381
382
383
384
385
386
387
388
389
390
391
392
393
394
395
396
397
398
399
400
401
402
403
404
405
406
407
408
409
410
411
412
413
414
415
416
417
418
419
420
421
422
423
424
425
426
427
428
429
430
431
432
433
434
435
436
437
438
439
440
441
442
443
444
445
446
447
448
449
450
451
452
453
454
455
456
457
458
459
460
461
462
463
464
465
466
467
468
469
470
471
472
473
474
475
476
477
478
479
480
481
482
483
484
485
486
487
488
489
490
491
492
493
494
495
496
497
498
499
500
501
502
503
504
505
506
507
508
509
510
511
512
513
514
515
516
517
518
519
520
521
522
523
524
525
526
527
528
529
530
531
532
533
534
535
536
537
538
539
540
541
542
543
544
545
546
547
548
549
550
551
552
553
554
555
556
557
558
559
560
561
562
563
564
565
566
567
568
569
570
571
572
573
574
575
576
577
578
579
580
581
582
583
584
585
586
587
588
589
590
591
592
593
594
595
596
597
598
599
600
601
602
603
604
605
606
607
608
609
610
611
612
613
614
615
616
617
618
619
620
621
622
623
624
625
626
627
628
629
630
631
632
633
634
635
636
637
638
639
640
641
642
643
644
645
646
647
648
649
650
651
652
653
654
655
656
657
658
659
660
661
662
663
664
665
666
667
668
669
670
671
672
673
674
675
676
677
678
679
680
681
682
683
684
685
686
687
688
689
690
691
692
693
694
695
696
697
698
699
700
701
702
703
704
705
706
707
708
709
710
711
712
713
714
715
716
717
718
719
720
721
722
723
724
725
726
727
728
729
730
731
732
733
734
735
736
737
738
739
740
741
742
743
744
745
746
747
748
749
750
751
752
753
754
755
756
757
758
759
760
761
762
763
764
765
766
767
768
769
770
771
772
773
774
775
776
777
778
779
780
781
782
783
784
785
786
787
788
789
790
791
792
793
794
795
796
797
798
799
800
801
802
803
804
805
806
807
808
809
810
811
812
813
814
815
816
817
818
819
820
821
822
823
824
825
826
827
828
829
830
831
832
833
834
835
836
837
838
839
840
841
842
843
844
845
846
847
848
849
850
851
852
853
854
855
856
857
858
859
860
861
862
863
864
865
866
867
868
869
870
871
872
873
874
875
876
877
878
879
880
881
882
883
884
885
886
887
888
889
890
891
892
893
894
895
896
897
898
899
900
901
902
903
904
905
906
907
908
909
910
911
912
913
914
915
916
917
918
919
920
921
922
923
924
925
926
927
928
929
930
931
932
933
934
935
936
937
938
939
940
941
942
943
944
945
946
947
948
949
950
951
952
953
954
955
956
957
958
959
960
961
962
963
964
965
966
967
968
969
970
971
972
973
974
975
976
977
978
979
980
981
982
983
984
985
986
987
988
989
990
991
992
993
994
995
996
997
998
999
1000

At first, PI was used as an early indicator of regional anaesthesia success, using PI increase to detect vasodilation due to sympathetic tone inhibition.

PI measured at the toe was described as the earliest and 100% sensitive indicator of sympathectomy and epidural anaesthesia success compared to MAP and skin temperature [21,40]. Usefulness of PI variation after neuraxial anaesthesia in paediatric patients under general anaesthesia was also demonstrated [23,41]. PI variation was highly predictive of block success for regional plexus blocks in adults as well [20,22,42]. Variation of PI by a factor 1.55 had an area under the receiver operating characteristic curve of 0.94 for sciatic block, and area under the receiver operating characteristic curve of 1 for axillary block [20]. PI accuracy for prediction of regional block success was also higher than cold or pinprick sensations.

A recent work showed that PI performances for detection of regional block success were not different when using epinephrine as an adjuvant to local anaesthetics [43].

3.2 PI in assessment of neuraxial anaesthesia-induced haemodynamic variations

1
2
3 In parturients undergoing caesarean delivery after spinal-epidural anaesthesia, basal PI
4
5
6 measured at finger location was correlated with the decline of systolic arterial pressure ($r =$
7
8
9 0.66) [44]. Baseline PI also showed a better correlation with systolic arterial pressure or MAP
10
11 decrease than baseline heart rate, systolic arterial pressure, or MAP. The area under the
12
13 receiver operating characteristics curve for baseline PI to predict arterial hypotension after
14
15 spinal-epidural anaesthesia (defined as decrease in systolic arterial pressure $\geq 25\%$) was 0.87
16
17 (95% CI 0.74–0.99, $p < 0.001$), with a best threshold value of 3.5%. Similar results were found
18
19 later with the same cut-off value [45]. So, a PI value greater than 3.5% before spinal
20
21 anaesthesia is a risk factor for anaesthesia-induced hypotension. One could expect that
22
23 baseline PI value would also predict accurately diastolic arterial pressure decrease since
24
25 vascular tone is one of the main determinants of diastolic arterial pressure. However, none
26
27 of these studies evaluated the correlation between baseline PI values and diastolic arterial
28
29 pressure decrease. A high PI value at baseline suggests a low basal vascular tone. Therefore,
30
31 the decrease in sympathetic tone induced by spinal-epidural in patients with already low
32
33 basal sympathetic tone, is more likely to induce a decrease in the stressed volume, resulting
34
35 in a decrease of venous return and SV. Thus, PI is a simple tool to easily detect parturient
36
37 patients with low sympathetic tone at high risk of arterial hypotension after spinal
38
39 anaesthesia.
40
41
42
43
44
45
46
47
48
49

3.3 PI in assessment of nociception

50
51
52
53
54 As sympathetic tone is highly affected by nociceptive stimuli, PI signal has been used for
55
56 nociception assessment during anaesthesia and in critical care [5]. Thus, the increase of
57
58 vascular tone and MAP following nociceptive stimuli is associated with a decrease in PI [46].
59
60
61
62
63
64
65

1
2
3
4
5
6
7
8
9
10
11
12
13
14
15
16
17
18
19
20
21
22
23
24
25
26
27
28
29
30
31
32
33
34
35
36
37
38
39
40
41
42
43
44
45
46
47
48
49
50
51
52
53
54
55
56
57
58
59
60
61
62
63
64
65

Variation in PI could nevertheless be viewed only as a measurement of haemodynamic variation, *i.e.*, increase of sympathetic tone, following nociceptive stimulation. Hence, it may not be accurate in patients with external control of adrenergic receptors, such as those under high dose of vasopressors or contrarily, in case of pharmacological blockade of their sympathetic tone (*e.g.*, epidural anaesthesia or peripheral nerve blockade).

3.4 PI to detect blood pressure variation during general anaesthesia

Recent data have highlighted usefulness of PI to detect arterial hypotension during general anaesthesia. During induction of anaesthesia, PI variations were inversely correlated with MAP variations [25]. An increase of 51% or more from baseline PI detected a decrease of MAP of at least 20%. Another recent study found opposite but complementary results regarding the association between MAP and PI, in patients under general anaesthesia. Indeed, in 20 patients under general anaesthesia with head-up and head-down tilt, Højlund et al. observed that PI variations were positively correlated to MAP variations [31]. In this study, head-up tilt induced a decrease in SV correlated to MAP decrease, suggesting no significant variations in vascular tone, and resulting in a drop of PI. On the contrary, induction of anaesthesia is associated with severe drop in vascular tone. Both studies explored two major determinants of PI, reinforcing the fact that PI should be considered as the balance between SV and vascular tone, as schematically described in **Figure 2**. Then, a rapid variation of PI represents an alarm signal that should warn and force the clinician to quickly check the occurrence of an arterial hypotension in patients under general anaesthesia, monitored with intermittent cuff blood pressure measurement. Kinetics of PI variation may also help clinicians to identify the mechanism of arterial hypotension and manage these situations quickly and accurately: an increase of PI suggests excessive

1 vasodilatation (relative to excessive depth of anaesthesia for example), while a secondary
2 decrease of PI in a patient deeply anaesthetised may reveal SV decrease (hypovolaemia
3 and/or cardiac dysfunction).
4
5
6

7 8 **3.5 PI and prognosis in anaesthesia** 9

10
11 In a large recent and retrospective study, intraoperative PI was associated with severe
12 postoperative complications or death (lower values being associated with worse outcomes)
13 in a time-dependent manner even after adjustment for confounding variables [47].
14
15 Furthermore, they observed that the association between PI with the primary outcome was
16 higher in patients with MAP > 65 mmHg compared to patients with MAP ≤ 65 mmHg (OR =
17 1.17; 95% CI 1.09-1.27; *p* < 0.001 vs. OR = 1.07; 95% CI 1.02-1.13; *p* = 0.011; respectively),
18 suggesting a degree of incoherence between systemic haemodynamic and microcirculation.
19
20 Indeed, increasing afterload with the use of vasopressors without assessing the cause of
21 hypotension (e.g., hypovolaemia, cardiac dysfunction...) could impair tissue perfusion and
22 therefore lead to organ dysfunction. Whether targeting PI during anaesthesia could improve
23 patient's outcome remains to be assessed in randomised controlled trials.
24
25
26
27
28
29
30
31
32
33
34
35
36
37
38
39
40
41
42

43 **4) Clinical usefulness in ICU and emergency department: what are the data?** 44 45 46

47
48 The characteristics and main results of discussed studies are detailed in **Supplementary**
49
50

51 **Table 1.** 52 53 54 55 56 57 58 59 60 61 62 63 64 65

4.1 Static and dynamic values of PI in ICU patients

1
2
3 The first study evaluating PI in ICU was published more than 15 years ago by Lima et al. [15].
4
5
6 It evaluated the evolution of PI in healthy volunteers and critically ill patients with poor
7
8 peripheral perfusion (*i.e.*, capillary refill time > 2 sec or central-to-toe temperature
9
10 difference ≥ 7 °C). In this study, the authors observed a significant exponential relationship
11
12 between PI and core-to-toe temperature difference, and significant linear correlation
13
14 between changes in PI and in core-to-toe temperature difference. Then, they compared
15
16 haemodynamic variables between two periods; T1 during poor peripheral perfusion and T2
17
18 during normal peripheral perfusion in the 37 critically ill patients under vasoactive
19
20 medication. They observed a concordant change between T1 and T2 in PI and core-to-toe
21
22 temperature difference but not with cardiac output, mean arterial pressure or dose of
23
24 vasoactive agents. In this study, a PI of 1.4 best discriminated between normal and abnormal
25
26 core-to-toe temperature differences in the critically ill patients (area under the receiver
27
28 operating characteristics curve 0.91; 95% CI 0.84–0.98, $p < 0.001$). In this study, the authors
29
30 neither looked at the relationship between PI and capillary refill time, nor between PI and
31
32 prognosis (*e.g.*, mortality). This observation suggests that PI could reflect local
33
34 microcirculation status.
35
36
37
38
39
40
41
42
43
44

4.2 PI and prognosis in ICU and emergency department

45
46
47
48
49 Several studies have shown the negative impact of persisting macrohaemodynamic and/or
50
51 microcirculatory alterations in patients with acute circulatory failure [48–50]. The hypothesis
52
53 that severe and/or persistent circulatory alterations in these patients, with higher
54
55 sympathetic activation, would be reflected by PI values or variations is therefore highly
56
57 expected. Thus, several studies have confirmed this hypothesis and the prognostic value of
58
59
60
61
62
63
64
65

1
2
3
4
5
6
7
8
9
10
11
12
13
14
15
16
17
18
19
20
21
22
23
24
25
26
27
28
29
30
31
32
33
34
35
36
37
38
39
40
41
42
43
44
45
46
47
48
49
50
51
52
53
54
55
56
57
58
59
60
61
62
63
64
65

PI has been evaluated in critically ill patients in different clinical settings (*i.e.*, septic patients, after cardiac arrest, in patients with hypoperfusion, in emergency department and in neonates).

In ICU, in different populations (*e.g.*, septic patients, mechanically ventilated patients...), PI values allow a discrimination between septic patients and non-septic patients and between survivors and non-survivors [51]. Furthermore, PI was strongly associated with ICU mortality [51,52]. In patients with hypoperfusion, after 8 hours of resuscitation, PI allowed a better 30-days mortality prediction than central venous oxygen saturation (ScvO₂), lactate and arteriovenous carbon dioxide gradient (P(v-a) CO₂) [53]. Subgroup analysis suggested that PI (with a 0.6% cut-off) could enable to detect patients with the worst prognosis despite ScvO₂ normalisation selecting them for adjunctive therapies, notably targeting the microcirculation. This was confirmed in a recent study, in which PI was significantly higher in survivors compared to non-survivors after 6 hours of resuscitation, suggesting that the increase of PI value in the first hours of resuscitation is associated with a better outcome [54]. However, it is impossible to assess whether the difference observed in PI between survivors and non-survivors after initial resuscitation is secondary to an improvement of macrohaemodynamic (*i.e.*, cardiac index) or microcirculation.

The potential prognostic value of peripheral PI after cardiac arrest has been confirmed in a prospective study [55]. In this study, PI was significantly also higher in survivors than in non-survivors at day 30 in the first 30 minutes after return to spontaneous circulation. Similar results were again described by the same authors, including a better survival with good neurologic outcome (cerebral performance categories ≤ 2) in patients who had higher PI [56]. However, the authors did not report the cardiac index or other variable such as

1 microcirculation variables, making difficult to interpret the PI differences between survivors
2 and non-survivors.
3

4
5
6 In a prospective study, performances of PI were evaluated for triage of patients admitted to
7 the emergency department for the prediction of mortality at 15 and 30 days [57]. PI was
8 neither predictive of hospital admission, nor associated with mortality in this study.
9
10 However, this may be explained by a low severity rate and lack of power of PI in this
11 population, compared with ICU patients.
12
13
14
15
16
17

18
19
20 In neonates, a low PI ($\leq 1.4\%$) was found to be accurate for detection of illness severity in the
21 24 h after admission [58,59]. More recently, a prospective study gave more data concerning
22 PI values in pre-term infants [60]. Thus, PI seems promising in neonates and infants to easily
23 detect illness severity, and has already made the object of a dedicated review [61].
24
25
26
27
28
29
30

31 Although PI appears efficient to discriminate survivors from non-survivors and septic from
32 non-septic patients in ICU, most studies are retrospective, with PI measurement at different
33 time points and different cut-off values, therefore the clinical use of PI as a prognostic tool
34 remains to be explored.
35
36
37
38
39
40
41

42 **4.3 Dynamic changes of PI induced by heat**

43
44
45 More recently, PI was used with a heating challenge to monitor microvascular reactivity in
46 patients presenting a shock [62]. PI at earlobe was significantly higher in healthy volunteers
47 compared to shocked patients. After heating challenge, all the non-septic patients (healthy
48 volunteers, ICU-control patients and non-septic shocked patients, *i.e.*, cardiogenic and
49 haemorrhagic) had similar increase in PI value. PI increase was smaller in septic shock
50 patients after heating challenge than in non-septic patients. In a small population, there was
51
52
53
54
55
56
57
58
59
60
61
62
63
64
65

1 a non-significant trend in the evolution of PI and PImax/min after heating challenge in
2 survivors compared to non-survivors. PI variations could enable physicians to discriminate
3
4
5 septic from non-septic patients and identify patients with a poor prognosis.
6

7
8 In a prospective observational study including patients under therapeutic hypothermia after
9
10 cardiac arrest, Van Genderen et al. studied peripheral tissue perfusion, notably using PI
11
12 before and after rewarming [63]. At admission, PI was not significantly different between
13
14 survivors and non-survivors. PI became significantly different between survivors and non-
15
16 survivors after rewarming similarly to other microcirculation variable (*i.e.*, perfused capillary
17
18 density and proportion-perfused vessels) assessed using a side stream dark-field imager.
19
20 Interestingly, cardiac index was not different between survivors and non-survivors after
21
22 rewarming, suggesting that PI differences observed between survivors and non-survivors
23
24 were rather secondary to microcirculation disorders than macrohaemodynamic disorders.
25
26
27
28
29
30
31
32
33
34
35

36 **5) Fluid Responsiveness**

37
38
39 The characteristics and main results of discussed studies are detailed in **Supplementary**
40
41
42 **Table 1.**
43
44

45 **5.1 PI and prediction of fluid responsiveness or fluid removal in ICU**

46
47
48 Beurton et al. assessed whether PI variation during a passive leg-raising (PLR) test could
49
50 accurately predict fluid responsiveness in ICU patients, mostly under mechanical ventilation
51
52 [32]. An increase of PI > 9% induced by PLR predicted an increase of cardiac index > 10%
53
54 induced by PLR with a sensitivity of 91% (95% CI 76–98%), a specificity of 79% (95% CI 63–
55
56 90%) and an area under the receiver operating characteristics curve of 0.89 (95% CI 0.8–
57
58
59
60
61
62
63
64
65

1 0.95). These results were confirmed in another study, which also showed that PI variations
2 during an end-expiratory occlusion test could help to predict positive PLR [33]. However, the
3
4 cut-off value of relative PI increase during end-expiratory occlusion test was very low (2.5%),
5
6 compared to the PI values displayed today in most monitors with most often only one
7
8 decimal place, and with respect to spontaneous variations in PI. Other authors, using the
9
10 same relationship between PI and SV, studied in mechanically ventilated patients during
11
12 spontaneous breathing trial (using the ratio: PI before weaning trial/PI during weaning trial),
13
14 to predict weaning failure [64]. They observed that the lack of increase in PI during
15
16 spontaneous breathing trial was associated with trial failure. This suggests that when PI
17
18 increases during spontaneous breathing trial, patients may be on the initial vertical part of
19
20 the Franck-Starling curve, *i.e.*, fluid responders, and thus at lower risk of weaning-induced
21
22 pulmonary oedema. Furthermore, PI and PI variations have been used to predict
23
24 hypotension during fluid removal under renal replacement therapy [65]. A PI value $\leq 0.82\%$
25
26 predicted hypotension with an area under the receiver operating characteristics curve of 0.8
27
28 ± 0.11 and PI variation (*i.e.*, decrease) during fluid removal was also predictive of
29
30 hypotension. As for neuraxial anaesthesia, a low PI may be a witness of high vascular tone
31
32 and/or low SV, and thus predictive of hypotension due in part to hypovolaemia induced by
33
34 fluid removal. However, this study included only 23 patients and should be confirmed in a
35
36 larger cohort.
37
38
39
40
41
42
43
44
45
46
47

5.2 PI respiratory variations and prediction of fluid responsiveness

51
52
53
54
55 The variability of PI is low during steady-state conditions, under deep general anaesthesia,
56
57 because general anaesthesia reduces the oscillatory components of the perfusion signal
58
59 related to sympathetic, myogenic activity and the component modulated by the
60
61
62
63
64
65

1 endothelium [66]. Therefore, in this situation PI variations are mainly due to stroke volume
2 variations. PI respiratory variations, called PVI (Pleth Variability Index), have been widely
3 studied in mechanically ventilated patients for the prediction of fluid responsiveness,
4 notably in the operating theatre. The physiological concept is based on tracking PI variations
5 as a surrogate of SV variations (or pulse pressure) induced by positive pressure ventilation,
6
7 Then the respiratory variations of PI could have nearly the same accuracy to predict fluid
8 responsiveness than pulse pressure variation [67,68].
9

10 A recent meta-analysis by Liu et al. highlighted the wide range of PVI cut-off value (from 7%
11 to 20%), depending on the studied population and ventilation settings (*e.g.*, ICU, or, tidal
12 volume, positive end expiratory pressure...) to predict fluid responsiveness [69].
13 Furthermore, PVI is also (as it is derived from PI) largely influenced by the measurement site
14 and seems to be more accurate to predict fluid responsiveness when measured in the
15 forehead, less influenced by vasomotor tone than finger and earlobe [70]. Although a
16 previous study showed reduced volume of intraoperative fluid infused and lactate levels
17 using a PVI-guided fluid management, a recent randomised controlled trial using a
18 haemodynamic peroperative management based on PVI value compared to a standard
19 management did not shorten the duration of hospitalisation [71,72]. Therefore, further
20 studies are needed to assess whether or not PVI value is useful in haemodynamic
21 management in the OT.
22

23 PVI could also be an accurate tool to predict fluid responsiveness in children under
24 mechanical ventilation in the operating theatre [73]. Nevertheless, results are conflicting
25 among the studies performed in children and further studies are required to confirm the
26 accuracy of PVI to predict fluid responsiveness in the paediatric population [73–75].
27
28
29
30
31
32
33
34
35
36
37
38
39
40
41
42
43
44
45
46
47
48
49
50
51
52
53
54
55
56
57
58
59
60
61
62
63
64
65

6) Perspectives

After a wide use of PPG for decades for oximetry only, we are experiencing renewed interest and increasing use of PI in anaesthesia, perioperative and critical care. However, some important issues remain to be answered (**Figure 3**). The characteristics and main results of discussed studies are detailed in **Supplementary Table 1**.

6.1 Technical aspects

Firstly, technical aspects need to be assessed, as the value of PI between manufacturers has never been evaluated and could vary significantly. Algorithms and filters used by manufacturers to process the signal could be sources of distortion of PPG signal, and influence PI performances in various clinical settings. Furthermore, these differences between monitors could also have an impact on the absolute value of PI, and could lead to misinterpretations of this value. Therefore, the adequate cut-off value could be different between manufacturers. Studies assessing PI should always indicate which PPG device has been used.

6.2 Impact of PI use in haemodynamic management during anaesthesia

If data show that PI is useful for haemodynamic monitoring, it remains to be explored whether the use of PI for haemodynamic monitoring would improve the prognosis of patients undergoing surgery. To date, no well-designed studies have been conducted. An interesting study reported the use of an algorithm integrating PI and pulse pressure variation to guide fluid administration and the use of vasopressors (*i.e.*, in the case of a hypotension event, fluids should be administered if the PI value remained steady during the 15 minutes

1 before the hypotension, on the contrary the increase of the PI value should lead to the use
2 of vasopressors). The use of this algorithm was associated with lower duration of arterial
3 hypotension (7.7 ± 5.0 min vs. 17.1 ± 10.6 min, $p = 0.003$) and lower intraoperative fluid
4 administration (4.3 ± 1.3 ml/kg/h vs. 7.2 ± 3.3 ml/kg/h, $p = 0.003$) [76]. However, this study
5 suffers from several limitations. Among others, there was no algorithm in the control group
6 and the use of an algorithm itself may have favoured an early use of vasopressors rather
7 than fluid challenge. We could assume that another algorithm using other variables without
8 PI may have similar effects.
9

10 PI value before neuraxial anaesthesia predicts hypotension [44,45]. Similarly, variations of PI
11 allow real-time detection of arterial hypotension during the induction of general anaesthesia
12 [25]. In these specific situations (*i.e.*, neuraxial anaesthesia, peripheral nerve blockade,
13 induction of anaesthesia, etc.), modifications of PI values are due predominantly to
14 modifications of the vascular tone. Therefore, in such cases, PI variations are a reliable
15 reflection of sympathetic tone fluctuations. Nevertheless, the impact of PI use in these fields
16 remains to be explored. Indeed, algorithms using PI for early use of vasopressor should be
17 evaluated to prevent hypotension following neuraxial anaesthesia or induction of general
18 anaesthesia.
19
20

21 **6.3 Impact of PI use in haemodynamic management in ICU**

22 In ICU, PI and its early variations are associated with prognosis. Haemodynamic situations
23 can be complex especially in septic patients, and PI difficult to interpret [35]. In septic
24 patients, PI can also reflect microcirculation disorders as suggested by the lower increase of
25 PI after heating challenge [62]. However, in patients with preserved microcirculation in ICU,
26 rapid PI variations analyses remain useful in situations in which, among PI determinants, one
27
28
29
30
31
32
33
34
35
36
37
38
39
40
41
42
43
44
45
46
47
48
49
50
51
52
53
54
55
56
57
58
59
60
61
62
63
64
65

1 varies predominantly in regard to the others (*e.g.*, PLR, fluid challenge, etc.). Comparing PI
2 value in different measurement sites would possibly provide useful indications about local
3 perfusion; indeed, some territories could remain poorly perfused despite normalisation of
4 macrohaemodynamic status (*i.e.*, MAP, cardiac index, ScvO₂). We recently described urethral
5 PI monitoring through a modified urinary catheter [77]. Urethral PI monitoring featured a
6 stable, reliable signal capable of measuring urethral tissue perfusion. However, in this study
7 we neither compared urethral PI value with other measurement sites, nor specifically
8 evaluated the effects of therapeutics (*i.e.*, fluid challenge, vasopressors, and blood
9 transfusion) on PI value. In a proof of concept study, comparing an early peripheral
10 perfusion-guided fluid therapy (using capillary refill time, PI, skin temperature difference
11 between forearm and fingertip and tissue oxygen saturation) vs. standard of care in patients
12 with septic shock, Van Genderen et al. observed that perfusion-guided fluid therapy lead to
13 a trend toward less fluid administration and less organ dysfunction at 72 h compared with a
14 conventional regimen [78]. Recently, Hernandez et al., in a Bayesian reanalysis of the
15 ANDROMEDA-SHOCK Trial have confirmed this results, concluding that peripheral perfusion-
16 targeted resuscitation (*i.e.*, guided by capillary refill time) may result in lower 28-day
17 mortality when compared with a lactate-targeted resuscitation strategy [79]. Resuscitation
18 algorithms integrating PI for tissue perfusion assessment have also been proposed in ICU
19 [80]. The impact on critically ill patients' outcomes of such algorithms including PI, in
20 association with other resuscitation targets (*i.e.*, cardiac index, mean arterial pressure,
21 ScvO₂, capillary refill time) should be tested in large randomised controlled trials. However,
22 in these complex situations (*e.g.*, septic shock, haemorrhagic shock...), several determinants
23 of PI may vary simultaneously and abruptly (*i.e.*, increase in vascular tone due to
24 vasopressors, increase in stroke volume due to fluid loading and/or inotropic drug
25
26
27
28
29
30
31
32
33
34
35
36
37
38
39
40
41
42
43
44
45
46
47
48
49
50
51
52
53
54
55
56
57
58
59
60
61
62
63
64
65

1 introduction). This may contribute to abrupt and complex changes in PI. In these situations,
2 PI variations are more difficult to interpret, and should probably be used as an early signal
3 that should prompt reassessment of haemodynamic status, including stroke volume to
4 accurately interpret PI variations.
5
6
7
8
9

10 **7) Conclusion**

11 PI is a PPG-derived variable, already given by most devices, measuring perfusion at
12 crossroads between central and peripheral perfusion. It appears to be a useful, non-invasive
13 additional tool for haemodynamic monitoring in anaesthesiology, perioperative and critical
14 care for clinicians. Knowing its determinants is crucial to be able to interpret its variations.
15
16 Whether the use of PI in resuscitation algorithms would improve patient outcomes remains
17 to be explored.
18
19
20
21
22
23
24
25
26
27
28
29
30
31
32
33
34
35
36
37
38
39
40
41
42
43
44
45
46
47
48
49
50
51
52
53
54
55
56
57
58
59
60
61
62
63
64
65

References:

- [1] Aoyagi T. Pulse oximetry: its invention, theory, and future. *Journal of Anesthesia* 2003;17:259–66. <https://doi.org/10.1007/s00540-003-0192-6>.
- [2] Alian AA, Shelley KH. Photoplethysmography. *Best Practice & Research Clinical Anaesthesiology* 2014;28:395–406. <https://doi.org/10.1016/j.bpa.2014.08.006>.
- [3] Reisner A, Shaltis PA, McCombie D, Asada HH. Utility of the photoplethysmogram in circulatory monitoring. *Anesthesiology* 2008;108:950–8. <https://doi.org/10.1097/ALN.0b013e31816c89e1>.
- [4] Elgendi M. Optimal Signal Quality Index for Photoplethysmogram Signals. *Bioengineering* 2016;3:21. <https://doi.org/10.3390/bioengineering3040021>.
- [5] Korhonen I, Yli-Hankala A. Photoplethysmography and nociception. *Acta Anaesthesiologica Scandinavica* 2009;53:975–85. <https://doi.org/10.1111/j.1399-6576.2009.02026.x>.
- [6] Allen J. Photoplethysmography and its application in clinical physiological measurement. *Physiological Measurement* 2007;28:R1–39. <https://doi.org/10.1088/0967-3334/28/3/R01>.
- [7] Murray WB, Foster PA. The peripheral pulse wave: information overlooked. *J Clin Monit* 1996;12:365–77.
- [8] Plethsmographic waveform shapes displayed by oximeters-Technical note 2008.
- [9] PHILIPS. IntelliVue Patient Monitor Philips FAST-SpO2: Application Note n.d.
- [10] Nijboer JA, Dorlas JC, Mahieu HF. Photoelectric plethysmography--some fundamental aspects of the reflection and transmission method. *Clin Phys Physiol Meas* 1981;2:205–15.
- [11] Fine J, Branam KL, Rodriguez AJ, Boonya-ananta T, Ajmal, Ramella-Roman JC, et al. Sources of Inaccuracy in Photoplethysmography for Continuous Cardiovascular Monitoring. *Biosensors* 2021;11:126. <https://doi.org/10.3390/bios11040126>.
- [12] Goldman JM, Petterson MT, Kopotic RJ, Barker SJ. Masimo signal extraction pulse oximetry. *Journal of Clinical Monitoring and Computing* 2000;16:475–483.
- [13] Sang-Soo Oak, Praveen Aroul. How to Design Peripheral Oxygen Saturation (SpO2) and Optical Heart Rate Monitoring (OHRM) Systems Using the AFE4403. 2015.
- [14] Colquhoun DA, Forkin KT, Durieux ME, Thiele RH. Ability of the Masimo pulse CO-Oximeter to detect changes in hemoglobin. *J Clin Monit Comput* 2012;26:69–73. <https://doi.org/10.1007/s10877-012-9335-3>.
- [15] Lima AP, Beelen P, Bakker J. Use of a peripheral perfusion index derived from the pulse oximetry signal as a noninvasive indicator of perfusion. *Critical Care Medicine* 2002;30:1210–1213.
- [16] Keller G, Cassar E, Desebbe O, Lehot J-J, Cannesson M. Ability of pleth variability index to detect hemodynamic changes induced by passive leg raising in spontaneously breathing volunteers. *Crit Care* 2008;12:R37. <https://doi.org/10.1186/cc6822>.
- [17] Nitzan M, Faib I, Friedman H. Respiration-induced changes in tissue blood volume distal to occluded artery, measured by photoplethysmography. *J Biomed Opt* 2006;11:040506. <https://doi.org/10.1117/1.2236285>.
- [18] Shelley KH. Photoplethysmography: beyond the calculation of arterial oxygen saturation and heart rate. *Anesth Analg* 2007;105:S31-36, tables of contents. <https://doi.org/10.1213/01.ane.0000269512.82836.c9>.
- [19] Jeong I, Jun S, Um D, Oh J, Yoon H. Non-Invasive Estimation of Systolic Blood Pressure and Diastolic Blood Pressure Using Photoplethysmograph Components. *Yonsei Med J* 2010;51:345. <https://doi.org/10.3349/ymj.2010.51.3.345>.
- [20] Galvin EM, Niehof S, Verbrugge SJ, Maissan I, Jahn A, Klein J, et al. Peripheral Flow Index Is a Reliable and Early Indicator of Regional Block Success: *Anesthesia & Analgesia* 2006;103:239–43. <https://doi.org/10.1213/01.ane.0000220947.02689.9f>.
- [21] Ginosar Y, Weiniger CF, Meroz Y, Kurz V, Bdoelah-Abram T, Babchenko A, et al. Pulse oximeter perfusion index as an early indicator of sympathectomy after epidural anesthesia. *Acta*

Anaesthesiologica Scandinavica 2009;53:1018–26. <https://doi.org/10.1111/j.1399-6576.2009.01968.x>.

- [22] Kus A, Gurkan Y, Gormus SK, Solak M, Toker K. Usefulness of perfusion index to detect the effect of brachial plexus block. *Journal of Clinical Monitoring and Computing* 2013;27:325–8. <https://doi.org/10.1007/s10877-013-9439-4>.
- [23] Uemura A, Yagihara M, Miyabe M. Pulse oxymeter perfusion index as a predictor for the effect of pediatric epidural block. *Anesthesiology* 2006;105:A1354.
- [24] Sebastiani A, Philippi L, Boehme S, Closhen D, Schmidtman I, Scherhag A, et al. Perfusion index and plethysmographic variability index in patients with interscalene nerve catheters. *Canadian Journal of Anesthesia/Journal Canadien d’anesthésie* 2012;59:1095–101. <https://doi.org/10.1007/s12630-012-9796-3>.
- [25] Coutrot M, Joachim J, Dépret F, Millasseau S, Nougué H, Matéo J, et al. Noninvasive continuous detection of arterial hypotension during induction of anaesthesia using a photoplethysmographic signal: proof of concept. *British Journal of Anaesthesia* 2019;122:605–12. <https://doi.org/10.1016/j.bja.2019.01.037>.
- [26] Corsini I, Cecchi A, Coviello C, Dani C. Perfusion index and left ventricular output correlation in healthy term infants. *Eur J Pediatr* 2017;176:1013–8. <https://doi.org/10.1007/s00431-017-2920-1>.
- [27] Janaillac M, Beausoleil TP, Barrington KJ, Raboisson M-J, Karam O, Dehaes M, et al. Correlations between near-infrared spectroscopy, perfusion index, and cardiac outputs in extremely preterm infants in the first 72 h of life. *Eur J Pediatr* 2018;177:541–50. <https://doi.org/10.1007/s00431-018-3096-z>.
- [28] Takahashi S, Kakiuchi S, Nanba Y, Tsukamoto K, Nakamura T, Ito Y. The perfusion index derived from a pulse oximeter for predicting low superior vena cava flow in very low birth weight infants. *Journal of Perinatology* 2010;30:265–269.
- [29] van Genderen ME, Bartels SA, Lima A, Bezemer R, Ince C, Bakker J, et al. Peripheral Perfusion Index as an Early Predictor for Central Hypovolaemia in Awake Healthy Volunteers: *Anesthesia & Analgesia* 2013;116:351–6. <https://doi.org/10.1213/ANE.0b013e318274e151>.
- [30] Tapar H, Karaman S, Dogru S, Karaman T, Sahin A, Tapar GG, et al. The effect of patient positions on perfusion index. *BMC Anesthesiol* 2018;18:111. <https://doi.org/10.1186/s12871-018-0571-z>.
- [31] Højlund J, Agerskov M, Clemmesen CG, Hvolris LE, Foss NB. The Peripheral Perfusion Index tracks systemic haemodynamics during general anaesthesia. *J Clin Monit Comput* 2019. <https://doi.org/10.1007/s10877-019-00420-x>.
- [32] Beurton A, Teboul J-L, Gavelli F, Gonzalez FA, Giroto V, Galarza L, et al. The effects of passive leg raising may be detected by the plethysmographic oxygen saturation signal in critically ill patients. *Crit Care* 2019;23:19. <https://doi.org/10.1186/s13054-019-2306-z>.
- [33] Beurton A, Gavelli F, Teboul J-L, De Vita N, Monnet X. Changes in the Plethysmographic Perfusion Index During an End-Expiratory Occlusion Detect a Positive Passive Leg Raising Test*. *Critical Care Medicine* 2021;49:e151–60. <https://doi.org/10.1097/CCM.0000000000004768>.
- [34] Lian H, Wang X, Zhang Q, Zhang H, Liu D. Changes in perfusion can detect changes in the cardiac index in patients with septic shock. *J Int Med Res* 2020;48:030006052093167. <https://doi.org/10.1177/0300060520931675>.
- [35] He H-W, Liu W-L, Zhou X, Long Y, Liu D-W. Effect of mean arterial pressure change by norepinephrine on peripheral perfusion index in septic shock patients after early resuscitation. *Chin Med J (Engl)* 2020;133:2146–52. <https://doi.org/10.1097/CM9.0000000000001017>.
- [36] Charkoudian N. Mechanisms and modifiers of reflex induced cutaneous vasodilation and vasoconstriction in humans. *Journal of Applied Physiology* 2010;109:1221–8. <https://doi.org/10.1152/jappphysiol.00298.2010>.
- [37] Hodges GJ, Johnson JM. Adrenergic control of the human cutaneous circulation. *Appl Physiol Nutr Metab* 2009;34:829–39. <https://doi.org/10.1139/H09-076>.

- 1 [38] Awad AA, Ghobashy MA, Ouda W, Stout RG, Silverman DG, Shelley KH. Different responses of
2 ear and finger pulse oximeter wave form to cold pressor test. *Anesth Analg* 2001;92:1483–6.
3 <https://doi.org/10.1097/00000539-200106000-00026>.
- 4 [39] Shelley KH, Tamai D, Jablonka D, Gesquiere M, Stout RG, Silverman DG. The Effect of Venous
5 Pulsation on the Forehead Pulse Oximeter Wave Form as a Possible Source of Error in Spo₂
6 Calculation: *Anesthesia & Analgesia* 2005;100:743–7.
7 <https://doi.org/10.1213/01.ANE.0000145063.01043.4B>.
- 8 [40] Kakazu CZ, Chen B-J, Kwan W-F. Masimo set technology using perfusion index is a sensitive
9 indicator for epidural onset. *Anesthesiology* 2005;103:A576.
- 10 [41] Xu Z, Zhang J, Xia Y, Deng X. Accuracy of pulse oximeter perfusion index in thoracic epidural
11 anesthesia under basal general anesthesia. *International Journal of Clinical and Experimental*
12 *Medicine* 2014;7:1728.
- 13 [42] Abdelhamid B, Emam M, Mostafa M, Hasanin A, Awada W, Rady A, et al. The ability of
14 perfusion index to detect segmental ulnar nerve sparing after supraclavicular nerve block. *J Clin*
15 *Monit Comput* 2019. <https://doi.org/10.1007/s10877-019-00443-4>.
- 16 [43] Kim D, Jeong JS, Park MJ, Ko JS. The effect of epinephrine on the perfusion index during
17 ultrasound-guided supraclavicular brachial plexus block: a randomized controlled trial. *Sci Rep*
18 2020;10:11585. <https://doi.org/10.1038/s41598-020-68475-4>.
- 19 [44] Toyama S, Kakumoto M, Morioka M, Matsuoka K, Omatsu H, Tagaito Y, et al. Perfusion index
20 derived from a pulse oximeter can predict the incidence of hypotension during spinal
21 anaesthesia for Caesarean delivery. *British Journal of Anaesthesia* 2013;111:235–41.
22 <https://doi.org/10.1093/bja/aet058>.
- 23 [45] Duggappa D, Lokesh M, Dixit A, Paul R, Raghavendra Rao R, Prabha P. Perfusion index as a
24 predictor of hypotension following spinal anaesthesia in lower segment caesarean section.
25 *Indian J Anaesth* 2017;61:649. https://doi.org/10.4103/ija.IJA_429_16.
- 26 [46] Hager H., Church S., Mandadi G., Pulley D. The Perfusion Index as Measured by a Pulse
27 Oximeter Indicates Pain Stimuli in Anesthetized Volunteers. *Anesthesiology* 2004;101:A514.
- 28 [47] Agerskov M, Thusholdt ANW, Holm-Sørensen H, Wiberg S, Meyhoff CS, Højlund J, et al.
29 Association of the intraoperative peripheral perfusion index with postoperative morbidity and
30 mortality in acute surgical patients: a retrospective observational multicentre cohort study.
31 *British Journal of Anaesthesia* 2021:S0007091221003561.
32 <https://doi.org/10.1016/j.bja.2021.06.004>.
- 33 [48] Sakr Y, Dubois M-J, De Backer D, Creteur J, Vincent J-L. Persistent microcirculatory alterations
34 are associated with organ failure and death in patients with septic shock. *Crit Care Med*
35 2004;32:1825–31.
- 36 [49] Top APC, Ince C, de Meij N, van Dijk M, Tibboel D. Persistent low microcirculatory vessel density
37 in nonsurvivors of sepsis in pediatric intensive care*: *Critical Care Medicine* 2011;39:8–13.
38 <https://doi.org/10.1097/CCM.0b013e3181fb7994>.
- 39 [50] Ait-Oufella H, Lemoine S, Boelle PY, Galbois A, Baudel JL, Lemant J, et al. Mottling score
40 predicts survival in septic shock. *Intensive Care Medicine* 2011;37:801–7.
41 <https://doi.org/10.1007/s00134-011-2163-y>.
- 42 [51] He H, Liu D, Long Y, Wang X. The peripheral perfusion index and transcutaneous oxygen
43 challenge test are predictive of mortality in septic patients after resuscitation. *Crit Care*
44 2013;17:R116. <https://doi.org/10.1186/cc12788>.
- 45 [52] Su L, Zhang R, Zhang Q, Xu Q, Zhou X, Cui N, et al. The Effect of Mechanical Ventilation on
46 Peripheral Perfusion Index and Its Association With the Prognosis of Critically Ill Patients:
47 *Critical Care Medicine* 2019;47:685–90. <https://doi.org/10.1097/CCM.0000000000003661>.
- 48 [53] He H, Long Y, Liu D, Wang X, Zhou X. Clinical classification of tissue perfusion based on the
49 central venous oxygen saturation and the peripheral perfusion index. *Crit Care* 2015;19:330.
50 <https://doi.org/10.1186/s13054-015-1057-8>.
- 51
52
53
54
55
56
57
58
59
60
61
62
63
64
65

- 1 [54] Mongkolpun W, Orbegozo D, Cordeiro CPR, Franco CJCS, Vincent J-L, Creteur J. Alterations in
2 Skin Blood Flow at the Fingertip Are Related to Mortality in Patients With Circulatory Shock:
3 Critical Care Medicine 2020;48:443–50. <https://doi.org/10.1097/CCM.0000000000004177>.
- 4 [55] Savastano S, Baldi E, Molinari S, Canevari F, Corazza V, Cacciatore E, et al. Post ROSC pulse-
5 oximetry derived perfusion index and thirty days survival after out-of-hospital cardiac arrest.
6 New insights from the Pavia CARE (Pavia Cardiac Arrest Registry). Resuscitation 2017;117:e19–
7 20. <https://doi.org/10.1016/j.resuscitation.2017.05.027>.
- 8 [56] Savastano S, Baldi E, Contri E, De Pirro A, Sciutti F, Compagnoni S, et al. Post-ROSC peripheral
9 perfusion index discriminates 30-day survival after out-of-hospital cardiac arrest. Intern Emerg
10 Med 2020. <https://doi.org/10.1007/s11739-020-02430-z>.
- 11 [57] Oskay A, Eray O, Dinç SE, Aydın AG, Eken C. Prognosis of Critically Ill Patients in the ED and
12 Value of Perfusion Index Measurement: A Cross-Sectional Study. The American Journal of
13 Emergency Medicine 2015;33:1042–4. <https://doi.org/10.1016/j.ajem.2015.04.033>.
- 14 [58] De Felice C, Latini G, Vacca P, Kopotic RJ. The pulse oximeter perfusion index as a predictor for
15 high illness severity in neonates. European Journal of Pediatrics 2002;161:561–2.
16 <https://doi.org/10.1007/s00431-002-1042-5>.
- 17 [59] Richardson DK, Gray JE, McCormick MC, Workman K, Goldmann DA. Score for Neonatal Acute
18 Physiology: a physiologic severity index for neonatal intensive care. Pediatrics 1993;91:617–23.
- 19 [60] Alderliesten T, Lemmers PMA, Baerts W, Groenendaal F, van Bel F. Perfusion Index in Preterm
20 Infants during the First 3 Days of Life: Reference Values and Relation with Clinical Variables.
21 Neonatology 2015;107:258–65. <https://doi.org/10.1159/000370192>.
- 22 [61] Piasek CZ, Van Bel F, Sola A. Perfusion index in newborn infants: a noninvasive tool for neonatal
23 monitoring. Acta Paediatr 2014;103:468–73. <https://doi.org/10.1111/apa.12574>.
- 24 [62] Vallée F, Nougé H, Mari A, Vodovar N, Dubreuil G, Damoiseil C, et al. Variations of Cutaneous
25 Capnometry and Perfusion Index During a Heating Challenge is Early Impaired in Septic Shock
26 and Related to Prognostic in Non-Septic Shock: SHOCK 2019;51:585–92.
27 <https://doi.org/10.1097/SHK.0000000000001216>.
- 28 [63] van Genderen ME, Lima A, Akkerhuis M, Bakker J, van Bommel J. Persistent peripheral and
29 microcirculatory perfusion alterations after out-of-hospital cardiac arrest are associated with
30 poor survival*: Critical Care Medicine 2012;40:2287–94.
31 <https://doi.org/10.1097/CCM.0b013e31825333b2>.
- 32 [64] Lotfy A, Hasanin A, Rashad M, Mostafa M, Saad D, Mahmoud M, et al. Peripheral perfusion
33 index as a predictor of failed weaning from mechanical ventilation. J Clin Monit Comput 2020.
34 <https://doi.org/10.1007/s10877-020-00483-1>.
- 35 [65] Klijn E, Groeneveld ABJ, van Genderen ME, Betjes M, Bakker J, van Bommel J. Peripheral
36 Perfusion Index Predicts Hypotension during Fluid Withdrawal by Continuous Veno-Venous
37 Hemofiltration in Critically Ill Patients. Blood Purif 2015;40:92–8.
38 <https://doi.org/10.1159/000381939>.
- 39 [66] Landsverk SA, Kvandal P, Bernjak A, Stefanovska A, Kirkeboen KA. The Effects of General
40 Anesthesia on Human Skin Microcirculation Evaluated by Wavelet Transform: Anesthesia &
41 Analgesia 2007;105:1012–9. <https://doi.org/10.1213/01.ane.0000281932.09660.96>.
- 42 [67] Chu H, Wang Y, Sun Y, Wang G. Accuracy of pleth variability index to predict fluid
43 responsiveness in mechanically ventilated patients: a systematic review and meta-analysis. J
44 Clin Monit Comput 2016;30:265–74. <https://doi.org/10.1007/s10877-015-9742-3>.
- 45 [68] Yang X, Du B. Does pulse pressure variation predict fluid responsiveness in critically ill patients?
46 A systematic review and meta-analysis. Crit Care 2014;18:650. <https://doi.org/10.1186/s13054-014-0650-6>.
- 47 [69] Liu T, Xu C, Wang M, Niu Z, Qi D. Reliability of pleth variability index in predicting preload
48 responsiveness of mechanically ventilated patients under various conditions: a systematic
49 review and meta-analysis. BMC Anesthesiol 2019;19:67. <https://doi.org/10.1186/s12871-019-0744-4>.
- 50
51
52
53
54
55
56
57
58
59
60
61
62
63
64
65

- 1 [70] Desgranges F-P, Desebbe O, Ghazouani A, Gilbert K, Keller G, Chiari P, et al. Influence of the site
2 of measurement on the ability of plethysmographic variability index to predict fluid
3 responsiveness. *British Journal of Anaesthesia* 2011;107:329–35.
4 <https://doi.org/10.1093/bja/aer165>.
- 5 [71] Fischer M-O, Lemoine S, Tavernier B, Bouchakour C-E, Colas V, Houard M, et al. Individualized
6 Fluid Management Using the Pleth Variability Index: A Randomized Clinical Trial.
7 *Anesthesiology* 2020;133:31–40. <https://doi.org/10.1097/ALN.0000000000003260>.
- 8 [72] Forget P, Lois F, de Kock M. Goal-Directed Fluid Management Based on the Pulse Oximeter–
9 Derived Pleth Variability Index Reduces Lactate Levels and Improves Fluid Management:
10 *Anesthesia & Analgesia* 2010;1. <https://doi.org/10.1213/ANE.0b013e3181eb624f>.
- 11 [73] Desgranges F-P, Evain J-N, Pereira de Souza Neto E, Raphael D, Desebbe O, Chassard D. Does
12 the plethysmographic variability index predict fluid responsiveness in mechanically ventilated
13 children? A meta-analysis. *British Journal of Anaesthesia* 2016;117:409–10.
14 <https://doi.org/10.1093/bja/aew245>.
- 15 [74] Pereira de Souza Neto E, Grousson S, Duflo F, Ducreux C, Joly H, Convert J, et al. Predicting fluid
16 responsiveness in mechanically ventilated children under general anaesthesia using dynamic
17 parameters and transthoracic echocardiography. *British Journal of Anaesthesia* 2011;106:856–
18 64. <https://doi.org/10.1093/bja/aer090>.
- 19 [75] Chen P, Chan K, Liao M, Wu C. Accuracy of dynamic preload variables for predicting fluid
20 responsiveness in patients with pediatric liver cirrhosis: A prospective study. *Pediatr Anaesth*
21 2020;30:455–61. <https://doi.org/10.1111/pan.13819>.
- 22 [76] Godai K, Matsunaga A, Kanmura Y. The effects of hemodynamic management using the trend
23 of the perfusion index and pulse pressure variation on tissue perfusion: a randomized pilot
24 study. *JA Clin Rep* 2019;5:72. <https://doi.org/10.1186/s40981-019-0291-5>.
- 25 [77] Dépret F, Leone M, Duclos G, Futier E, Montagne M, Legrand M, et al. Monitoring tissue
26 perfusion: a pilot clinical feasibility and safety study of a urethral photoplethysmography-
27 derived perfusion device in high-risk patients. *J Clin Monit Comput* 2019.
28 <https://doi.org/10.1007/s10877-019-00414-9>.
- 29 [78] van Genderen ME, Engels N, van der Valk RJP, Lima A, Klijn E, Bakker J, et al. Early Peripheral
30 Perfusion-guided Fluid Therapy in Patients with Septic Shock. *Am J Respir Crit Care Med*
31 2015;191:477–80. <https://doi.org/10.1164/rccm.201408-1575LE>.
- 32 [79] Zampieri FG, Damiani LP, Bakker J, Ospina-Tascón GA, Castro R, Cavalcanti AB, et al. Effects of a
33 Resuscitation Strategy Targeting Peripheral Perfusion Status versus Serum Lactate Levels
34 among Patients with Septic Shock. A Bayesian Reanalysis of the ANDROMEDA-SHOCK Trial. *Am*
35 *J Respir Crit Care Med* 2020;201:423–9. <https://doi.org/10.1164/rccm.201905-0968OC>.
- 36 [80] Hariri G, Joffre J, Leblanc G, Bonsey M, Lavillegrand J-R, Urbina T, et al. Narrative review: clinical
37 assessment of peripheral tissue perfusion in septic shock. *Ann Intensive Care* 2019;9:37.
38 <https://doi.org/10.1186/s13613-019-0511-1>.
- 39
40
41
42
43
44
45
46
47
48
49
50
51
52
53
54
55
56
57
58
59
60
61
62
63
64
65

Table 1: Determinants of Perfusion Index and artifacts

Physiological and pathophysiological determinants of Perfusion Index

Systemic factors	Local factors
Factors influencing AC	
<ul style="list-style-type: none">• Volaemia and venous return*• Diastolic function and inotropism *• Valvulopathy*• Vascular tone*(sympathetic, parasympathetic and non-adrenergic/non-cholinergic tones)• Arterial stiffness*• Vasoactive and cardiac medications*	<ul style="list-style-type: none">• Obliterant arteriopathy• Position of the limb in relation to the heart• Vascular compression• Local temperature exposure• Local arterial compliance• Local vascular tone
Factors influencing DC	
<ul style="list-style-type: none">• Vascular tone* (notably venous tone)• Volaemia*	<ul style="list-style-type: none">• Position of the limb• Body position• Vascular compression• Soft tissues compression• Local vascular tone
Artifacts that may influence AC and DC	
<ul style="list-style-type: none">• External light• Nail polish	<ul style="list-style-type: none">• Tissues and vascular extrinsic compressions• Probe and/or patient movements

Numerous intrinsic or extrinsic factors influence AC and/or DC, and therefore their ratio, *i.e.* Perfusion Index. The main determinants are stroke volume and vascular tone, themselves influenced by many factors. Determinants of stroke volume (*) all may influence AC and PI. Volaemia, external temperature, stress, nociception, and medications (*e.g.* norepinephrine, vasodilator effect of anaesthetic drugs, etc.) are determinants of vascular tone and therefore of Perfusion Index.

* Determinants of stroke volume

AC: alternating current; DC: direct current

Figure 1: Principles of photoplethysmography and PI calculation

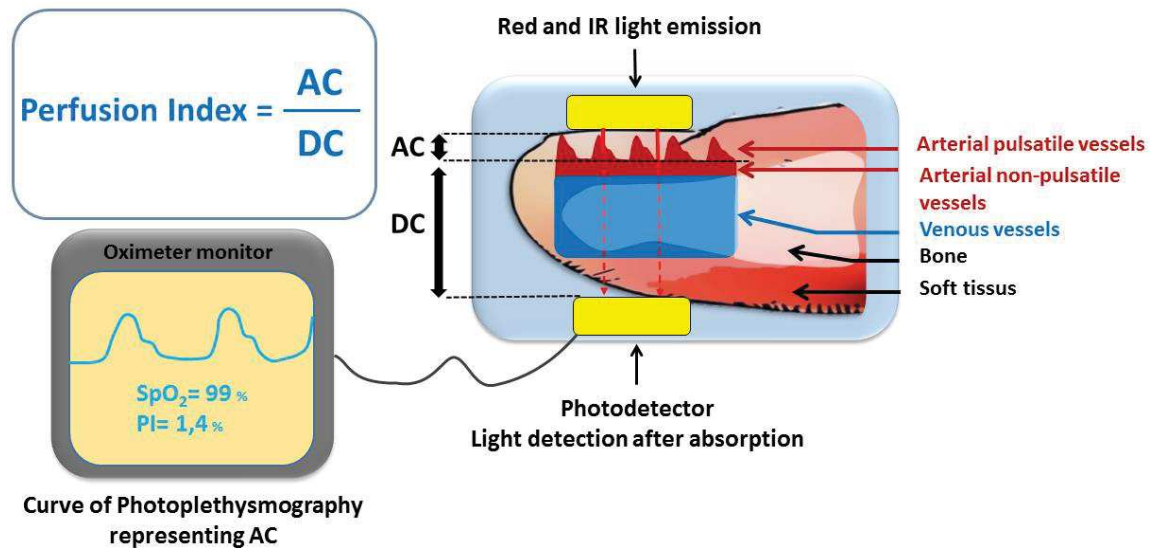
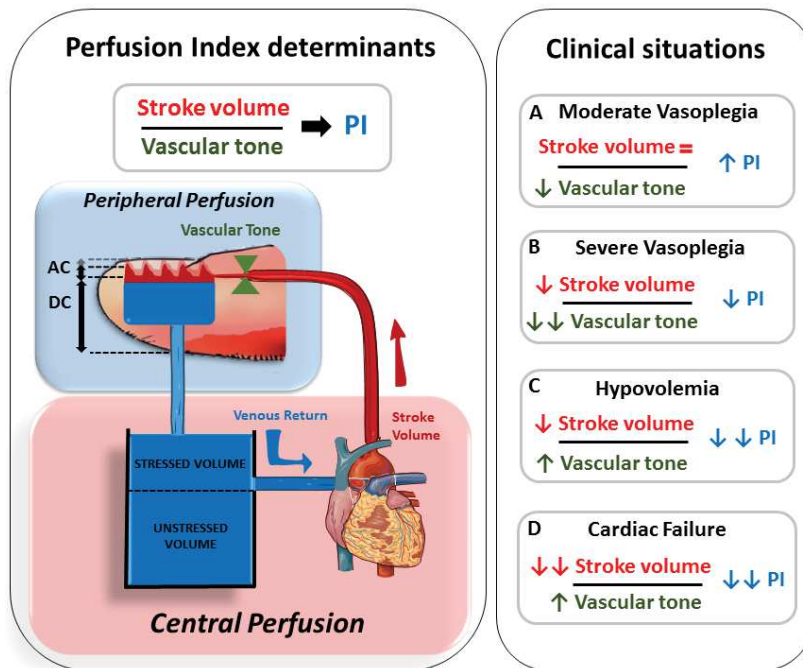


Figure 1 represents the principles of PPG and PI calculation. AC corresponds to the variation of red and IR lights absorption related to the variation of diameters of pulsatile vessels (*i.e.* arrowed arterial pulsatile vessels on the figure). DC corresponds to the light absorption of: arterial non-pulsatile vessels, venous vessels, bone and soft tissues. PI value is calculated as the AC/DC ratio.

AC: alternating current; DC: direct current; IR: infrared light PI: perfusion index; PPG: photoplethysmography

Figure 2: Determinants of PI and typical clinical situations

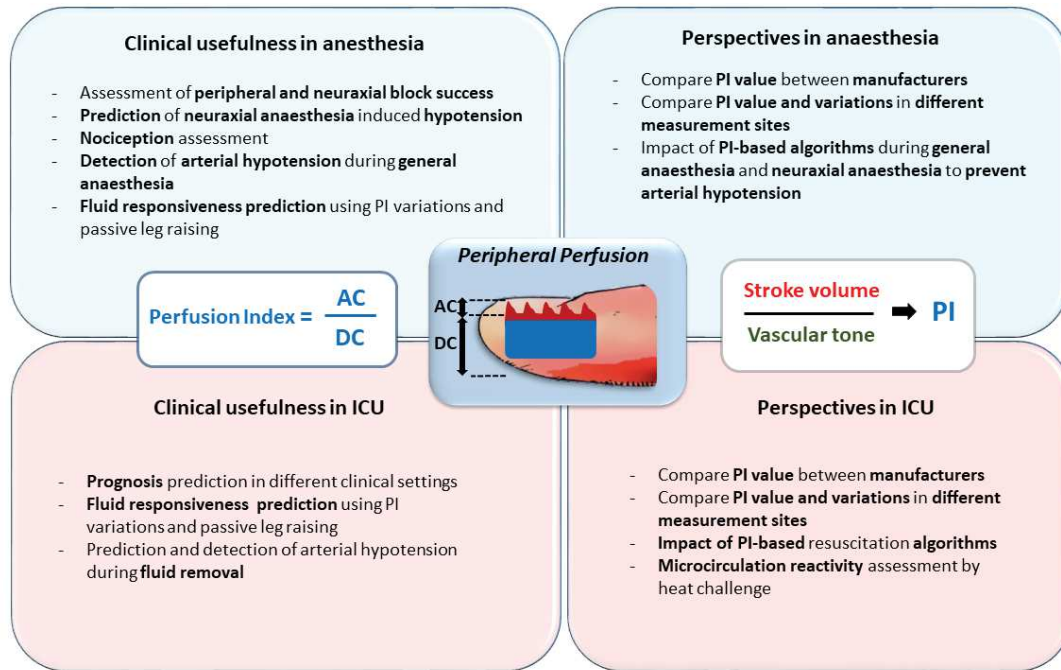


PI results from the local perfusion balance between peripheral determinants, mainly vascular tone and central determinants, *i.e.* SV. Situation A represents the components of moderate vasoplegia: decreased vascular tone with single arterial vasodilatation, without significant variations in SV, resulting in an increase in PI. If vasoplegia becomes severe (situation B), with arterial and venous vasodilatation, the drop of stressed volume, venous return and thus SV leads to a secondary decrease in PI, despite the decrease of vascular tone.

In situation C and D, *i.e.* hypovolaemia and cardiogenic shock, the drop of SV and the increase in vascular tone both contributes to a decrease in PI.

AC: alternating current; DC: direct current; PI: perfusion index; SV: stroke volume

Figure 3: Summary of clinical usefulness and perspectives of PI use in anaesthesia and critical care



AC: alternating current; DC: direct current; IR: infrared light; PI: perfusion index; PPG: photoplethysmography; AC: alternating current; DC: direct current

1
2
3
4
5
6
7
8
9
10
11
12
13
14
15
16
17
18
19
20
21
22
23
24
25
26
27
28
29
30
31
32
33
34
35
36
37
38
39
40
41
42
43
44
45
46
47
48
49
50
51
52
53
54
55
56
57
58
59
60
61
62
63
64
65