



HAL
open science

Consistent Change Propagation within Models

Roland Kretschmer, Djamel Eddine Khelladi, Roberto E Lopez-Herrejon,
Alexander Egyed

► **To cite this version:**

Roland Kretschmer, Djamel Eddine Khelladi, Roberto E Lopez-Herrejon, Alexander Egyed. Consistent Change Propagation within Models. *Software and Systems Modeling*, 2021, 20 (2), pp.539-555. 10.1007/s10270-020-00823-4 . hal-03029432

HAL Id: hal-03029432

<https://inria.hal.science/hal-03029432>

Submitted on 28 Nov 2020

HAL is a multi-disciplinary open access archive for the deposit and dissemination of scientific research documents, whether they are published or not. The documents may come from teaching and research institutions in France or abroad, or from public or private research centers.

L'archive ouverte pluridisciplinaire **HAL**, est destinée au dépôt et à la diffusion de documents scientifiques de niveau recherche, publiés ou non, émanant des établissements d'enseignement et de recherche français ou étrangers, des laboratoires publics ou privés.

Consistent Change Propagation within Models

**Roland Kretschmer · Djamel Eddine
Khelladi · Roberto E. Lopez-Herrejon ·
Alexander Egyed**

the date of receipt and acceptance should be inserted later

Abstract Developers change models with clear intentions - e.g., for refactoring, defects removal, or evolution. However, in doing so, developers are often unaware of the consequences of their changes. Changes to one part of a model may affect other parts of the same model and/or even other models, possibly created and maintained by other developers. The consequences are incomplete changes and with it inconsistencies within or across models. Extensive works exist on detecting and repairing inconsistencies. However, literature tends to focus on inconsistencies as errors in need of repairs rather than on incomplete changes in need of further propagation. Many changes are non-trivial and require a series of coordinated model changes. As developers start changing the model, intermittent inconsistencies arise with other parts of the model that developers have not yet changed. These inconsistencies are cues for incomplete change propagation. Resolving these inconsistencies should be done in a manner that is consistent with the original changes. We speak of consistent

Roland Kretschmer
Institute for Software Systems Engineering
Johannes Kepler University
Linz, Austria
E-mail: roland.kretschmer@jku.at

Djamel Eddine Khelladi
French
E-mail: djamel-eddine.khelladi@irisa.fr

Roberto E. Lopez-Herrejon
D'epartement de g'enie logiciel et des TI
'ETS - University of Quebec
Quebec, Canada E-mail: roberto.lopez@etsmtl.ca

Alexander Egyed
Institute for Software Systems Engineering
Johannes Kepler University
Linz, Austria
E-mail: alexander.egyed@jku.at

change propagation. This paper leverages classical inconsistency repair mechanisms to explore the vast search space of change propagation. Our approach not only suggests changes to repair a given inconsistency but also changes to repair inconsistencies caused by the aforementioned repair. In doing so, our approach follows the developer’s intent where subsequent changes may not contradict or backtrack earlier changes. We argue that consistent change propagation is essential for effective model driven engineering. Our approach and its tool implementation were empirically assessed on 18 case studies from industry, academia, and GitHub to demonstrate its feasibility and scalability. A comparison with two versioned models shows that our approach identifies actual repair sequences that developers had chosen. Furthermore, an experiment involving 22 participants shows that our change propagation approach meets the work flow of how developers handle changes by always computing the sequence of repairs resulting from the change propagation.

1 Introduction

The benefits of *Model-Driven Engineering (MDE)* hinge on the assumption that models remain consistent. This is obviously a problem during evolution when changes happen. Avoiding or repairing inconsistencies is important, because inconsistencies often cause subsequent errors if developers do not recognize them in a timely manner. Moreover, if models are inconsistent, all automation around them is untrustworthy and likely causes further errors. Therefore, inconsistencies must not only be detected but ultimately be repaired [Frakes and Kang(2005), Whittle et al(2014)Whittle, Hutchinson, and Rouncefield, Demuth et al(2016)Demuth, Kretschmer, Egyed, and Maes].

Not surprisingly, inconsistency detection and repair has received considerable attention from the scientific community [Taentzer et al(2017)Taentzer, Ohrndorf, Lamo, and Rutle, Hegedüs et al(2015)Hegedüs, Horváth, and Varró, Reder and Egyed(2013), Mens et al(2006)Mens, Van Der Straeten, and D’Hondt].

However, not only wrong but also incomplete model changes may cause inconsistencies. That is, a change in a part of the model that was not carried through to other parts of the model causes inconsistencies. Those inconsistencies are cues for missing changes and not for (earlier) erroneous changes. This paper focuses on these incomplete changes. We discuss how to use inconsistencies as guides for completing changes (i.e., for consistent change propagation) by 1) suggesting changes to (not yet modified) parts of the model that repair the given inconsistencies, 2) systematically exploring further changes that repair inconsistencies caused by the changes in (1), and 3) by ensuring that the resulting sequence of changes is faithful to the initial, incomplete changes the developer made (which convey the developers intention). We speak of consistent change propagation.

As an example, imagine that a message is passed among two components and the name of this message is inconsistent, because there is no declaration with such a name. One possible repair of this inconsistency is to change the

message name. As such, the message name could be changed to the name of any declaration. However, another possible repair is to change the name of one of the declarations. Both are valid repairs but which repair is in fact the desired one? This depends on the developer's intent. In fact, by considering the original developer's change that caused the the message to become inconsistent we could infer the intent. For example, if the developer initially renamed the message which caused the inconsistency, then the likely intent was to rename the declaration or add a new declaration. It would be contradictory to the developer's intent to rename the message once again, even though doing so would be a valid repair.

The basic idea governing consistent change propagation is to treat earlier developer changes as correct modifications of the model. The inconsistencies caused by these changes should then be repaired such that they do not contradict the developer and/or earlier repairs. Consistent change propagation cannot be solved adequately if one merely investigates one change at a time without also considering subsequent changes therefore.

This paper introduces a method and corresponding implementation that explores the propagation of initial developer changes by systematically trying alternatives for repairing arising inconsistencies. This is done by computing a model state tree for each developer change, where every model state represents the application of exactly one repair. This allows us to track every effect the repair has on the model and provide guidance on how a developer can propagate the performed change through affected parts of the model. The result is not a single repair but rather alternative sequences of changes.

We evaluated the performance and usability of our approach on 18 case studies consisting of inconsistent models. Two of those models were taken from GitHub. Among the 176 changes, we were able to reach a consistent model state within five repairs on average for every developer change. We further conducted an experiment with 22 students. The experiment helped us to further assess the usefulness of our consistent change propagation approach, by investigating if our approach can reproduce the repair sequences the students have applied to the model. We were able to compute all repair sequences the students applied to the models to propagate changes. On average our approach is able to provide all model state trees and repair plans within 3 seconds over all used models. In cases where models have hundreds of possible repairs to propagate changes, we sorted them by the number of necessary repair steps from shortest to longest repair sequences, i.e., "fewer is better" is often considered a desirable sorting strategy.

2 Running Example

To illustrate our approach, we use a *video on demand* (VOD) system which is based on a client-server architecture taken from Egyed et al. [Egyed(2006)]. Figure 1 depicts example snippets of three different UML diagram types of this system: a class diagram, a sequence diagram and a state machine diagram.

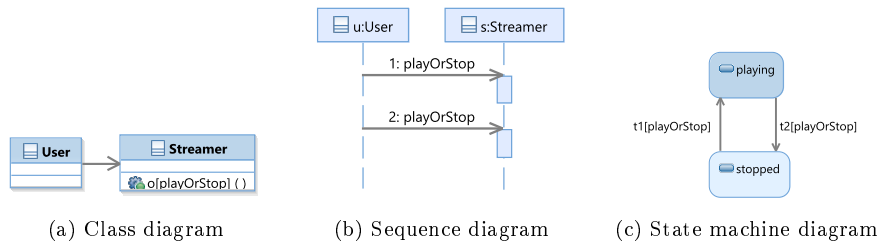


Fig. 1: UML model snippets of VOD system

Table 1: Consistency Rules

Consistency Rule 1 (CR1) – Every message has to have a corresponding operation in the lifeline’s class.	<code>context: Message</code> <code>self.class.operations-></code> <code>exists(o:self.name =</code> <code>o.name)</code>
Consistency Rule 2 (CR2) – Every transition has to have a corresponding operation in the state machine diagram’s class.	<code>context: Transition</code> <code>self.class.operations-></code> <code>exists(o:self.name =</code> <code>o.name)</code>
Consistency Rule 3 (CR3) – Every transition has to have a corresponding message in the lifeline.	<code>context: Transition</code> <code>self.lifeline.messages-></code> <code>exists(m:self.name =</code> <code>m.name)</code>

In the class diagram in Figure 1a, class `User` initiates the process of playing or stopping a stream by calling operation `playOrStop` on class `Streamer`. Class `Streamer` handles the user interaction, e.g., receiving user input and visualizing streams. The sequence diagram in Figure 1b describes the operation where a user plays or stops a specific stream by calling operation `playOrStop` on an instance of class `Streamer`, which then initiates the playback of a movie or stops the playback. The state machine diagram describes the possible states of class `Streamer`. When a `Streamer` is in the state `stopped` and a user changes the state by calling `playOrStop` then the state machine transitions to the state `playing` (the reverse happens if `playOrStop` happens again). To distinguish those two transitions in the text we will annotate them with `t1[playOrStop]` for the transition from state `stopped` to `playing`, and `t2[playOrStop]` for the transition from state `playing` to `stopped`.

In this paper we use the *Object Constraint Language (OCL)* [OMG(2014)], a declarative language based on first order logic, to define our *consistency rules* for UML models. Table 1 shows three examples of consistency rules (CRs). *Consistency rules* define specific constraints that must hold in software models.

These constraints express relations among model elements that can range from well-formedness to very domain-specific ones for non-functional properties such as maintainability or usability [Reder and Egyed(2013)]. CR1 ensures that all messages in a lifeline have an equally named operation in their corresponding class. CR2 ensures that every transition in a state machine diagram has an equally named operation in its corresponding class. CR3 checks that every transition in a state machine diagram has an equally named message in its corresponding lifeline.

The focus of this paper is supporting developers in propagating changes. Hence, the initial change is made by the developer. For example, let us imagine that a developer wants to split the `playOrStop` transition into two separate transitions `play` and `stop`. The developer may initiate this by first renaming transition `t1[playOrStop]` to `t1[play]`. However, doing so causes two inconsistencies:

- I1 **Violation of CR2.** There is no operation named `play` in class `Streamer` for the new transition `play`.
- I2 **Violation of CR3.** There is no incoming message `play` to lifeline `s:Streamer` for transition `play`.

Our approach assumes that the initial developer change was performed with intent (i.e., the software engineer wants to evolve the state machine diagram in this manner). The resulting inconsistencies need to be repaired with respect to this intent.

It is easy to see that these inconsistencies imply incomplete changes. Splitting `playOrStop` requires additional changes in the sequence and class diagrams. Without automated support, the developer may be unaware of this problem. Even if the developer knows about the inconsistencies then she may not know which further changes are needed to resolve the inconsistencies. It is important to note that there are many alternatives to propagate a change throughout the whole model. A repair mechanism that does not understand the developer's intent would for instance, suggest to repair I1 by either 1) renaming transition `play` to `playOrStop`, 2) adding an operation with name `play` to the model or 3) renaming the existing operation `playOrStop`. Obviously, repair 1 is valid but contradictory to the developer's intent. Repairs 2 and 3 appear reasonable but what are their effects? Are they equal? For example, repair 3 would resolve I1 but it would introduce further inconsistencies. Moreover, recall that the initial developer change caused two inconsistencies.

Starting to propagate the developer change by fixing I1 is one possibility. Another possibility is to propagate it by fixing I2, for example renaming message `1:playOrStop` (in Figure 1b) to `play`, but that causes a new inconsistency I3.

- I3 **Violation of CR1.** There is no operation named `play` in class `Streamer` for message `play`.

To fix I3, we further propagate the above repair by adding a new operation `play` to class `Streamer`, which fixes I3 and also I1. After this step the model

is consistent and the developer's change from the state machine diagram has been propagated to all corresponding diagrams. While the repairing of I2 with the consequence I3 has the beneficiary side effect of also repairing of I1, the opposite could be true also: the repair of I2 with I3 could contradict I1.

Please note that instead of adding an operation named `play` to class `Streamer` it would be also possible to rename operation `playOrStop` to `play`, which propagates the developer's change, but creates two new inconsistencies: no operation for message `2:playOrStop` and no operation for transition `t2[playOrStop]` in class `Streamer`. To fix those two inconsistencies we can add operation `playOrStop` to class `Streamer`, which would result in the same consistent model state as shown above (i.e., presence of operations `play` and `playOrStop`). This is an alternative sequence of propagating the change, but it needs one additional action to fix the new inconsistencies.

As another example after `play` has been propagated, the software engineer changes the transition `t2[playOrStop]` in the state machine diagram to `stop`. This again causes two inconsistencies:

- I4 **Violation of CR2.** There is no operation named `stop` in class `Streamer` for transition `stop`.
- I5 **Violation of CR3.** There is no incoming message `stop` to lifeline `s:Streamer` for transition `stop`.

This time we start propagating the developer's change to class `Streamer` by fixing I4. Again we have two possibilities: either we add operation `stop` to class `Streamer` or we rename operation `playOrStop`. Renaming the already existing `play` should not be done here, since it has been propagated beforehand, and would undo this propagation. We can rename operation `playOrStop` to `stop` and then rename message `2:playOrStop` also to `stop`. Thus, class `Streamer` then only contains two operations `play` and `stop` and the model is consistent. However, as an alternative, we can also add an operation `stop` to `Streamer`, the result would be three operations (e.g., `play`, `stop`, `playOrStop`) in class `Streamer` after reaching a consistent model state.

All these repair sequences are alternative change propagations that are a consequence of the initial developer change to reach a consistent model state again. As this example illustrates, repairs should follow the developers intent and there are alternative possible repair sequences, for satisfying this intent. Invalid repair sequences do not resolve all inconsistencies caused or may change the developer's intent (e.g., by overwriting the developer change). Our approach propagates the change of the developer by computing relevant repairs only, and not all possible repairs in contrast to the existing work in literature.

3 Background

This section provides definitions and examples of the most important terms for a proper understanding of this paper, as well as an explanation of the consistency checking mechanism.

3.1 Definitions

Definition 1 Model. A model \mathbb{M} consists of model elements ($me \in \mathbb{M}$) where model elements can have properties py . A property of a model element is referred to by element dot (\cdot) property name, e.g. "Streamer.name". A diagram is simply a subset of model elements from the model.

Definition 2 Consistency Rule A consistency rule is a condition defined for a context. For example, CR1 from Section 2 defines a condition that every message has to satisfy. The condition itself is a hierarchically ordered (tree-based) set of expressions, where the root expression corresponds to the condition as a whole and its subexpressions correspond to parts of the condition.

An expression identifies an operation, has a single parent and one or more children and values to be validated ($se2v$). Recall that CR1 has two parts: an exists expression (\rightarrow exists(...)) and an equals expression ($=$). The **equals** expression has two children: `self.name` and `o.name`, both are leaf expression. Typically, leaf expressions either access model elements or are constants.

Definition 3 Validation Tree A consistency rule validated on a specific model element is a validation. E.g., there are two messages in Figure 1b: `1:playOrStop` and `2:playOrStop`. Hence, there are two validations, one for each message. Each validation checks if a consistency rule's condition validates to true for its given context. This can be done recursively for every expression/subexpression of a condition. The root expression of a condition is expected to validate to true, however, as earlier work has shown, this expectation may change with subexpressions (e.g., because of negations [Reder and Egyed(2013)]). A validation tree mirrors the tree-structure of the consistency rule condition. However, in case of repetitions (e.g., exists quantifier above) their (sub)tree-structures repeat for every iteration. Hence, the validation tree is an exact log of each operation computed during the validation of a condition. As an example, Figure 3 shows a validation tree for CR1. This validation tree will be explained in detail in the next section.

Definition 4 Scope Element. A scope element is a model element and its properties ($e.p$) accessed during the validation of a consistency rule. A set of scope elements is called a scope. The scope is derived from the various property call expressions of the validation tree.

Definition 5 Repair Action. A *repair action* defines a change to a model that resolves an inconsistency in part or full (often multiple repair actions are needed to resolve an inconsistency). A repair action contains the model element (me), the property (py) that is affected by the change, the type of operation (op), and a value (v , which can be a model element $v \in \mathbb{M}$, or a primitive value $v \in \mathbb{V}$) or no value (\emptyset) applied to the property. The following types of changes are possible: $+$ adds a value, $-$ deletes a value, and $=$ modifies a model element property to a given value. In addition there are the

constraining changes: \neq , $<$, $>$, where respectively a property has to be different than value, less than value, or greater than value. \mathbb{RA} is the set of all possible repair actions.

$$ra \in \mathbb{RA} := \langle me.py, op, v \rangle, op \in \{+, -, =, \neq, <, >\}$$

Literature distinguishes between *abstract* and *concrete* repair actions, where an abstract repair action has no concrete value ($v = \emptyset$). In this paper, we only use concrete repair actions, since abstract repair actions cannot be executed, and therefor are not suitable for automated consistent change propagation.

As an example the inconsistency I2 discussed in Section 2 can be fixed by changing the name of message `1:playOrStop`. Expressed as an abstract repair action this leads to: $\langle 1 : playOrStop.name, =, \emptyset \rangle$. Note that this abstract repair action is a hint and is not automatically executable yet, because we do not have a specific value for `1:playOrStop.name`.

To fix I2 (from Section 2) we can use the following concrete repair action: $\langle 1 : playOrStop.name, =, "play" \rangle$, which renames `1:playOrStop` to "play". Note that it might be necessary to change multiple scope elements at once to fix an inconsistency. For that purpose, we define groups of repair actions as follows.

Definition 6 Repair. A *repair* is a non empty collection of repair actions (ra) that fixes a specific inconsistency (i from the set of all possible inconsistencies \mathbb{I}). This set ras (repair actions) may contain both repair actions which can be abstract ($isAbstract(ra)$) and/or concrete ($\neg isAbstract(ra)$).

$$\langle i \in \mathbb{I}, ras \subseteq \mathbb{RA}_i \rangle$$

Furthermore we define the term *abstract repair* which states that the set of repair actions contains at least one abstract repair action ($ra \subseteq \mathbb{RA}_i | (\exists x \in \mathbb{RA} | isAbstract(x))$), and we also define the term *concrete repair* which exclusively contains concrete repair actions ($ras \subseteq \mathbb{RA}_i | (\forall ra \in ras | \neg isAbstract(x))$). Please note that only a concrete repair is able to fix an inconsistency automatically.

As an example, I2 from Section 2 can be fixed by changing the name of message `1:playOrStop`. Expressed as a concrete repair this leads to: $\langle I2, \{1 : playOrStop.name, =, "play"\} \rangle$. Basically each correct value leads to a concrete repair.

Definition 7 Developer Change A developer change is a single intentional modification of a model element performed by human. A developer change is similar to a repair action (i.e., it affects a model element, one of its properties, has an operation $+$, $-$, $=$, and always a concrete value v), however it may

create or repair new inconsistencies, or it may have no effect on the model's consistency.

$$\langle me.py \in \mathbb{M}, op, v \rangle, op \in \{+, -, =\}$$

As an example, consider the developer change from Section 2 where a developer renamed transition `t1[playOrStop]` to `play`. Expressed as tuple this leads to: $\langle t1[playOrStop].name, =, "play" \rangle$

Definition 8 Model State A model state represents an applied change to the model r (through the execution of a repair) leading to a changed set of inconsistencies (i), where at least one inconsistency is repaired, and possibly new inconsistencies are caused. Every model state has a preceding model state (one change applied before) called parent p and a set of multiple succeeding model states (multiple repairs applied after) called children c forming a *model state tree*.

$$\langle r \in \mathbb{R}, p \in \text{MS}, c \subseteq \text{MS}, i \in \mathbb{I} \rangle$$

As an example, consider the change of renaming message `1:playOrStop` to `play` from Section 2. Expressed as tuple this leads to:

$$\left\langle \langle I2, \{ \langle 1 : playOrStop.name, =, "play" \rangle \} \rangle, \emptyset, \emptyset, \{ I1, I3 \} \right\rangle$$

Definition 9 Repair Sequence A repair sequence represents a list of repairs, which (when executed in order) lead to a final model state where the initial developer's change has been propagated. The set \mathbb{DC} represent all possible developer changes in the model.

$$\langle u \in \mathbb{DC}, \langle r_1 \in \mathbb{R}, \dots, r_n \in \mathbb{R} \rangle \rangle$$

For instance a repair sequence from Section 2 is:

$$\langle \langle t1[playOrStop].name, =, "play" \rangle, \langle \langle I2, \{ \langle 1 : playOrStop.name, =, "play" \rangle \} \rangle, \langle I3, \{ \langle Streamer.operations, +, play \rangle \} \rangle \rangle$$

Which first applies the developer change (rename `t1[playOrStop]` to `play`) then message `1:playOrStop.name` to `play` and finally adds an operation `play` to class `Streamer`.

Definition 10 Model State Tree A model state tree represents sequences of repairs that propagate a developer change to a consistent model state. The repair sequences are implicitly represented by the hierarchy of the model states. A model tree's origin is always a developer change dc , it consists of at least on model state and an arbitrary amount of original inconsistencies oi (e.g., inconsistencies present before the developer change has been applied to the model). Please note that we do not consider those inconsistencies, since they are not created by the developer change. We only use consistent propagation for the new caused inconsistencies.

$$\langle dc \in \mathbb{DC}, ms \subseteq \text{MS}, oi \subset \mathbb{I} \rangle$$

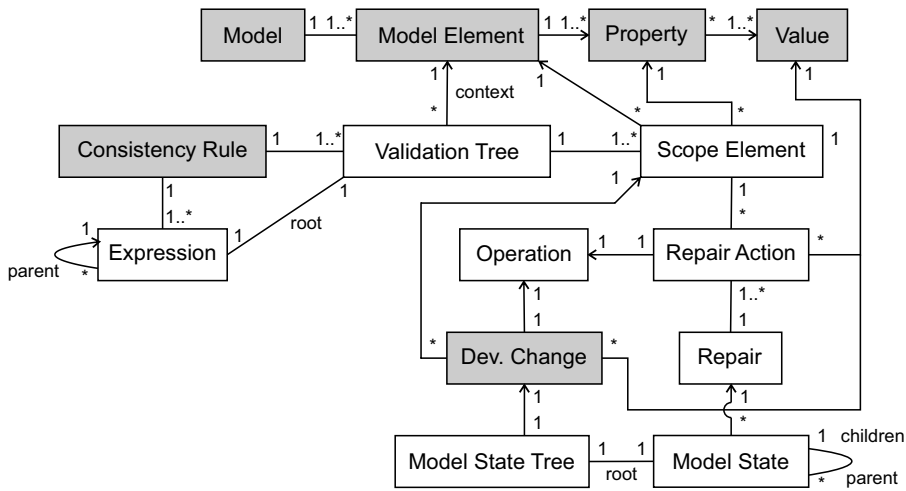


Fig. 2: UML class diagram for the definitions

3.2 Relations of the Defined Terms

For a better understanding of how our defined terms are related to each other we give an overview in Figure 2. This figure shows a UML class diagram of the definitions from the previous section depicted as classes (without attributes) and their associations. For instance a `Validation Tree` has exactly one `Model Element` as `context` element, depicted as association from `Validation Tree` to `Model Element` with the name `context`. In turn, one `Model Element` can be used by multiple `Validation Trees` as their `context` element.

The boxes highlighted in grey are the foundation of our approach and are provided by an engineer.

3.3 Consistency Checking

Consistency checking is a well-covered topic in literature. In this section, we explain one such approach on a simple example. To illustrate the consistency checking mechanism we use CR1 from Section 2.

```
context: Message self.class.operations->exists(o:self.name = o.name)
```

Figure 3 shows the instantiation of CR1 for the message `play`. The root expression represents the model element, for which the consistency rule is instantiated `self[play:Message]`. The next expression is an `exists expression` (\exists) where at least one of its children has to fulfill the condition defined in CR1 (`self.name = o.name`).

At the exists expression we create one subtree for operation `playOrStop`, which is in the corresponding class `Streamer` of the message `play`. Remember that message `play` is the modification performed by a developer (i.e., the

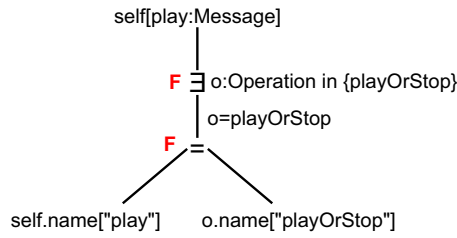


Fig. 3: Validation Tree for CR1

developer change) from Section 2. If there would be more operations, every operation results in its own sub tree in Figure 3. This subtree represents an equals expression (=) which compares the values returned by their children for equality. The comparison is between the message's name `play` and the operation's name `playOrStop`.

The scope elements of those expressions in the validation tree in Figure 3 are `[play:Message].name`, `[playOrStop:Operation].name`, `Streamer:Class` and `s:Lifeline`. Together those four scope elements form the scope for CR1.

In the validation tree, the root expression is expected to validate to `true` (i.e., consistent) and so its children expressions. For example, the `∃` and `=` expressions in Figure 3 are also expected to validate to `true`. If the root expression validates to `false`, then we detect an inconsistency. To compute the validation result of a validation tree, we start from the leafs (bottom) and start computing the validation result of the subexpressions (parent nodes) and continue this process until the root expression.

In Figure 3, since the name `"play"` is unequal to `"playOrStop"` the subtrees' validation result is `false` (denoted with a red `F`). At the exists expression (`∃`) there has to exist at least one subtree in its children with the validated result `true`, but in this example the subtree validates to `false`. Thus, the exists expression validates to `false`, which is the same validation result of the root expression. This is how the inconsistency I1 from Section 2 is detected in the model based on its validation tree.

3.4 Repair Generation

In the previous subsection, we explained how inconsistencies in models are detected. In this section we introduce, why we can repair arising inconsistencies in software models. Before computing the repairs, we first need to identify the cause of an inconsistency.

Take again the inconsistency I1. To identify the *cause* for I1 we take the *scope* from the previous section $scope = \{[play:Message].name, [playOrStop:Operation].name, Streamer:Class, s:Lifeline\}$. We then check for every scope element, if it is part of a violated expression, i.e., validation result \neq expected result (validation result of those expressions

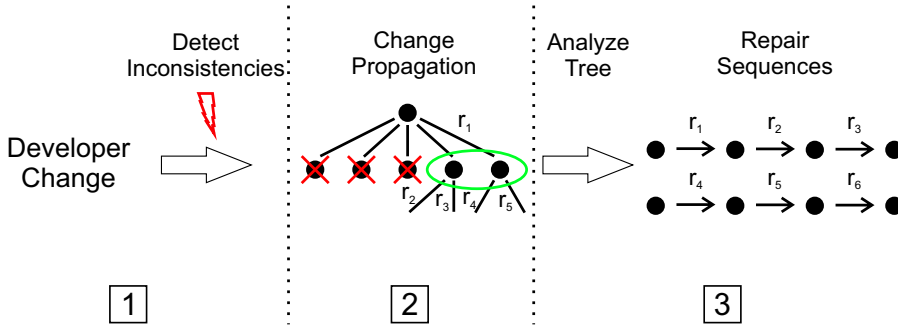


Fig. 4: Overview of our approach

is false in Figure 3), we add it to the *cause* of the inconsistency. The *cause* of our example shown in Figure 3 is $cause = \{[play:Message].name, [playOrStop:Operation].name, Streamer.operations\}$.

To generate repair actions we iterate over every scope element in the *cause* and look for every violated expression where the scope element is used. We then generate a change (i.e., repair action) so that the direct violated expression is validated. For instance, the scope element `[playOrStop:Operation].name` is used in the violated `=` expression in the right hand side of the validation tree shown in Figure 3. Based on this expression we know that the equals condition `=` is not fulfilled, since `name playOrStop` is unequal to `name play`. Therefore, the repair action for the scope element `playorstop` would be to rename it to `play` $\langle playOrStop.name, \odot, "play" \rangle$, which leads to the repair $\langle I1, \{ \langle playOrStop.name, \odot, "play" \rangle \} \rangle$ that fixes `I1` when executed.

However, changing the name of operation `playOrStop` to `play` is not the only valid repair for fixing `I1`. Based on the `=` expression in Figure 3, another repair can be generated for the scope element `play` which is to rename message `play` back to `playOrStop` $\langle I1, \{ \langle play.name, =, "playOrStop" \rangle \} \rangle$. This repair also fixes `I1`, however it would not make sense to rename `play` to `playOrStop` as it would undo the initial developer change. For a more detailed explanation of the repair generation mechanism please refer to [Reder and Egyed(2012a)].

4 Change Propagation Approach

This section presents our automated approach to consistently propagate a developer change to other parts of the model. The resulting sequences of repairs guide the developer towards a consistent model state containing the information provided by the initial developer change. First we give a general overview, then we describe how we perform the change propagation.

Figure 4 shows the basic workflow of our approach, which consists of the following three stages.

The *first stage* (1) applies the developer change to the model and identifies arising inconsistencies caused by this change. To detect those inconsistencies, consistency rules written in OCL are applied to the model via a consistency checking approach (e.g., [Xiong et al(2009)Xiong, Hu, Zhao, Song, Takeichi, and Mei, Reder and Egyed(2013), Reder and Egyed(2012b)], etc.). Those approaches come up with abstract repairs, which can be transformed to concrete repairs by using [Hegedüs et al(2011)Hegedüs, Horváth, Ráth, Branco, and Varró, Kretschmer et al(2017)Kretschmer, Khelladi, Demuth, Lopez-Herrejon, and Egyed].

The *second stage* (2) creates a model state tree for each of the initial developer changes causing inconsistencies. The model state tree explores new model states by repairing arising inconsistencies, where every repair leads to a new model state.

The *third stage* (3) analyzes the model state trees generated in the previous stage. This stage looks for final model states that are consistent (i.e., the leafs) and collects every repair applied from the root to those model states. Of course, there can be many possibilities of propagating a change resulting in a consistent model state. In the end the developer has to choose which one of them satisfies her needs. To help developers in choosing a repair sequence, we rank the repair sequences (from shortest to longest) based on the amount of repairs.

4.1 Stage 1. Initial Model State Tree

Algorithm 1 Create model state trees for the provided developer changes

```

1: function PROPAGATECHANGES(changes  $\subseteq$  CH)
2:   roots =  $\emptyset$ 
3:   for all ch  $\in$  changes do
4:     oI = getInconsistencies()
5:     apply(ch)
6:     causedInconsistencies = getInconsistencies()  $\setminus$  oI
7:     for all r  $\in$  getRepairs(causedInconsistencies) do
8:        $\triangleright$  Create new state at level 0
9:       root =  $\langle r, \emptyset, \emptyset, r.i \rangle$ 
10:      propagateRepair(root, 0, oI, r)
11:       $\triangleright$  Collect all ch with corresponding trees
12:      roots = roots  $\cup$   $\langle$  ch, root  $\rangle$ 
13:     end for
14:     undo(ch)
15:   end for
16:   return roots
17: end function

```

The first stage $\boxed{1}$ applies the provided developer changes sequentially (one after the other) through the impacted model elements and diagrams. After all developer changes have been applied, each developer change has a corresponding `model state tree` as defined in Section 3. Those model state trees can then be used to provide repair sequences for each developer change. Algorithm 1 illustrates the first stage $\boxed{1}$ of the developer change application.

The function `propagateChanges` takes a set of `developer changes` and returns a set of `model state trees` for each of them. From Line 3 to Line 6 we iterate over every provided developer change `ch` in `changes` and check the consistency of the model before we apply `ch`. This prevents the interference from already existing inconsistencies in the model. We then apply `ch` and check the model for the caused inconsistencies (caused by `ch`) (`causedInconsistencies`) by removing the already existing inconsistencies from the new set (\setminus is the set difference operation). Inconsistencies present before the application of the developer change are not considered for change propagation, since they are not caused by the developer change. However, as they are inevitably caused by previous changes, they could naturally be repaired with our current work by considering their causing changes too. For the sake of simplicity, we focus on new inconsistencies caused by developer changes.

From Line 7 to Line 16 we first iterate over every possible repair `r` from the caused inconsistencies ($r \in \text{getRepairs}(\text{causedInconsistencies})$).

The function `getRepairs()` generates repairs based on validation trees (see section 3.4), which originate from the provided consistency rules. We use our previous work [Reder and Egyed(2013), Reder and Egyed(2012a), Kretschmer et al(2017) Kretschmer, Khelladi, Demuth, Lopez-Herrejon, and Egyed] to compute repairs. However, our change propagation approach is generic and can work with repairs computed by any of the existing related works.

After that for each repair, we create a new model state at level 0 with the original inconsistencies `oI` (every sub model state needs to know them, to avoid propagating their repairs), no parent, no children (at this moment) and the repair `r` itself. We then start the propagation of the current developer change `ch` for every subsequent repair `r` by calling `propagateRepair()` (stage $\boxed{2}$). After the propagation of one developer change `ch` in `changes`, we undo the change (calling `undo(ch)`) so that we can propagate the next change without interference from the previous one. After all changes have been propagated we return their model state trees, so they can be analyzed afterwards (stage $\boxed{3}$). Stages $\boxed{2}$ and $\boxed{3}$ are discussed in the next sections.

As an example to better illustrate the first stage $\boxed{1}$, consider the model shown in Figure 1 and the developer change $\langle t1[\text{playOrStop}].\text{name}, =, \text{"play"} \rangle$ from Section 2. In this example, we have one developer change to propagate $\text{ch} = \langle t1[\text{playOrStop}].\text{name}, =, \text{"play"} \rangle$. Before we apply `ch` there are no inconsistencies in the model ($\text{oI} = \emptyset$). After the application of `ch` the two inconsistencies `I1` and `I2` from Section 2 are detected ($\text{causedInconsistencies} = \{ \text{I1}, \text{I2} \}$). The possible repairs for those two inconsistencies can be seen in Table 2.

Table 2: Repairs for I1, I2, I3, I4 and I5

Abbreviation	Repairs
R1	$\langle I1, \{ \langle o[\text{playOrStop}].\text{name}, =, \text{play} \rangle \} \rangle$
R2	$\langle I1, \{ \langle \text{Streamer}.\text{operations}, +, \text{play} \rangle \} \rangle$
R3	$\langle I2, \{ \langle 1 : \text{playOrStop}.\text{name}, =, \text{play} \rangle \} \rangle$
R4	$\langle I2, \{ \langle 2 : \text{playOrStop}.\text{name}, =, \text{play} \rangle \} \rangle$
R5	$\langle I2, \{ \langle s : \text{Streamer}.\text{messages}, +, \text{play} \rangle \} \rangle$
R6	$\langle I3, \{ \langle o[\text{playOrStop}].\text{name}, =, \text{play} \rangle \} \rangle$
R7	$\langle I3, \{ \langle \text{Streamer}.\text{operations}, +, \text{play} \rangle \} \rangle$
R8	$\langle I4, \{ \langle \text{Streamer}.\text{operations}, +, \text{playOrStop} \rangle \} \rangle$
R9	$\langle I5, \{ \langle \text{Streamer}.\text{operations}, +, \text{playOrStop} \rangle \} \rangle$

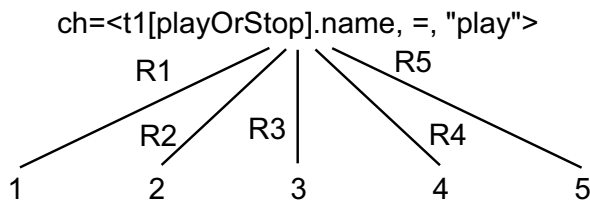


Fig. 5: Initial model state tree for a developer change

Of course another additional repair for both inconsistencies would be to rename transition `play` back to `playOrStop`, but this would undo the developer change and performs no propagation. Hence, it is not considered as relevant repair option. After those first repairs have been found, we get an initial propagation tree with only one level, as shown in Figure 5. This tree depicts all possible model states (labeled with 1 to 5) after applying the repairs shown in Table 2. All the shown repairs have the same structure, where either a value is modified (=) or an element added (+). For instance, R1 renames operation `o[playOrStop]` to `play`, and R2 adds an operation `play` to class `Streamer`.

4.2 Stage 2. Model State Propagation

The next step is to further propagate those repairs towards a consistent model, since those 5 repairs cause subsequent inconsistencies. The second stage (2) depicts this process shown in Algorithm 2.

From Line 2 to Line 6 we check if the current model state reached the limit of the current model state tree by checking its `level` with the maximum admissible level (`maxLevel`). This is done to skip propagation in cases where it takes too long to reach a consistent model state (i.e., to much inconsistencies caused by subsequent repairs). It also aims to skip cycles of

Algorithm 2 Propagate developer change through the model

```

1: function PROPAGATEREPAIR(parent, level,  $\text{oI} \subseteq \mathbb{I}$ ,  $r \in \mathbb{R}$ )
2:   if level > maxLevel then
3:     ▷ Stop propagation if there are too many tree levels
4:     return
5:   end if
6:   apply(r)
7:   causedInconsistencies = getInconsistencies() \ oI
8:   causedRepairs = getRepairs(causedInconsistencies)
9:   children =  $\emptyset$ 
10:  for all repair  $\in$  causedRepairs do
11:    ▷ Create new state for next tree level
12:    child =  $\langle \textit{repair}, \textit{parent}, \textit{children}, r.i \rangle$ 
13:    children = children  $\cup$  child
14:  end for
15:  for all c  $\in$  children do
16:    propagateRepair(c, level+1, oI, r)
17:  end for
18:  undo(r)
19: end function

```

repairs that would lead to an endless recursion in the tree. We then apply the repair to the model to possibly get new inconsistencies (`apply(r)`). From Line 7 to Line 14 we retrieve new repairs from the inconsistencies caused by the application of repair *r* (`getRepairs(causedInconsistencies)`) with respect to the original inconsistencies *oI*. Repairs from *oI* are not considered for the propagation, since they have not been created by the initial developer change. If there are no new repairs, our algorithm has found a consistent model state and the developer change has been propagated successfully. If we detected new repairs (`causedRepairs` not empty) we create a new model state for each repair at the next level (`level + 1`) and add this new state to the children of the current state (`children = children \cup child`). Then, we continue propagating the change for every child recursively to the next level (`propagateRepair(c, level+1, oI, r)`). After every recursive step we undo (`undo(r)`) the applied repair to restore the parent model state and to explore another branch in the tree.

After running the algorithm 2, the model state tree in Figure 5 is augmented by propagating the subsequent repairs R1-R5 resulting in the model state tree shown in Figure 6. Take for example R3, as mentioned in Section 2, R3 repairs I2 but also creates a new inconsistency I3 which can be repaired with the repairs R1, R2, R6, and R7.

For simplicity, let us focus on the propagation of two repairs R6 and R7 in this example. First we select R7 and propagate this to the next model state 9 (`c.propagateRepair(3)`). After we apply R7 in model state 9 (`apply(R7)`) we detect no more inconsistencies, and therefore no more repairs. So we undo

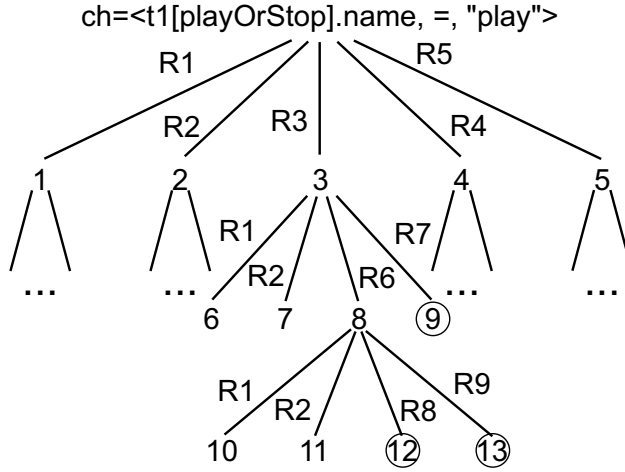


Fig. 6: Model state tree for a developer change.

R7 and return to model state 3. Model state 9 now represents a consistent model state (marked with a circle) in which the initial developer's change has been propagated successfully. Back in model state 3 we now select R6 (the next repair in collection `children`). We then continue propagating the change to the next model state 8. After we applied R6 we create two new inconsistencies I4 and I5 (no operation `playOrStop` for message `2:playOrStop` and transition `t2[playOrStop]`) with the corresponding repairs shown in Table 2. In model state 8 we now propagate R8 and R9 to the consistent model states 12 and 13.

Model states 9, 12 and 13 represent now model states in which the initial developer's change $\langle t1[\text{playOrStop}].\text{name}, =, \text{"play"} \rangle$ has been propagated and all related inconsistencies have been fixed. The second developer change $\langle t2[\text{playOrStop}].\text{name}, =, \text{"stop"} \rangle$ (from section 2) is propagated following the same principles as shown in this example.

4.3 Stage 3. Analyze Model State Tree

In stage three ([3](#)), we analyze the model state trees that have been computed in stage [2](#), to derive the repair sequences which propagate the developer change and lead to consistent model states. This is performed with a simple depth first search. For example, from the model state tree shown in Figure 6, after analyzing the subtree R3, we get three repair sequences (repairs from Table 2) which propagate successfully the developer change:

$$\begin{aligned} \langle t1[\text{playOrStop}].\text{name}, =, \text{"play"} \rangle &: \langle R3, R7 \rangle \\ \langle t1[\text{playOrStop}].\text{name}, =, \text{"play"} \rangle &: \langle R3, R6, R8 \rangle \\ \langle t1[\text{playOrStop}].\text{name}, =, \text{"play"} \rangle &: \langle R3, R6, R9 \rangle \end{aligned}$$

We also rank those sequences based on the amount of repairs, which makes the selection process easier for the developer from shortest to longest. In the end, the developer has to decide which one of those repair sequences fits the most her needs and requirements.

5 Evaluation

We evaluate our approach by assessing its correctness, scalability and usefulness. For the evaluation we applied 20 consistency rules to 18 models taken from three different sources: academia (VOD, Curriculum Planer, Course System, Hotel Management, Calndarium), industry (eBullition, MVC, Inventory, Tele, Vacation System, Home Control System, DESI, Micro, iTalks, Dice, dSpace) and GitHub (Pro11, fullAdder) [Hebig et al(2016)Hebig, Quang, Chaudron, Robles, and Fernandez], and one model used in an experiment for this paper. The domains of the models range from control of a micro wave oven to a model view controller of software and an inventory storage management system. Two of these models from GitHub have two versions each, where version one had inconsistencies that had been fixed in version two by a developer. This further allowed us to assess the quality of our approach and the relevance of our repairs, i.e. whether the manually applied repairs by the developers could be replicated by our approach. The model sizes ranged from 300 to 8800 model elements, the number of applied changes from 1 to 29 and the sum of all repaired inconsistencies during the propagation of all changes from 4 to 99. Table 3 shows those details per model. Note that our implementation has a compilation module integrated to check the syntactical correctness of the OCL consistency rules. The data set is archived in the FigShare platform¹ to be used for reproducibility and for comparison purposes. We executed the evaluation on a Windows 10 PC with a Core i7 3.4GHz and 32GB RAM.

5.1 Research Questions

In this section, we define three research questions (RQ) to evaluate our approach.

RQ 1: To what extent is it possible to propagate a developer change based on model consistency information? This aims to investigate if it is feasible to propagate developer changes based on caused subsequent inconsistencies through the model.

RQ 2: How many consistent model states does our approach find, what is the average length of the found repair sequences, and how much time did it take to compute the model state trees? This aims to investigate the performance and scalability as well as the correctness of our approach, when a developer change has been successfully propagated through the model.

¹ <https://figshare.com/s/e27177256a9dc10693d2>

Table 3: Model information

Model Name	#Model Elements	#Changes	Sum Re-paired In-con.	Source
pro11	284	2	4	GitHub ^a
fullAdder	992	1	5	GitHub ^b
VOD	467	3	8	Academia
Curriculum Planer	868	26	99	Academia
eBullition	1346	5	22	Industry
MVC	1410	2	9	Industry
Inventory	1422	17	81	Industry
Tele	1471	7	21	Industry
Course System	1620	29	91	Academia
Vacation System	1805	9	21	Industry
Home Control System	1882	10	89	Industry
DESI	2056	3	3	Industry
Micro	2346	5	9	Industry
iTalks	2462	9	58	Industry
Hotel Management	2790	3	15	Academia
Calendarium	3263	20	50	Academia
Dice	4485	16	30	Industry
dSpace	8859	5	5	Industry
experiment	210	4	21	Academia

^a <https://github.com/11TCLC-DA-CNPM/doan-cnpm-quanly-ban-dien-thoai-pro11tclc/>

^b <https://github.com/acdoorn/design-patterns/tree/master/diagrams/>

RQ 3: Does our approach also find repair sequences a developer would have applied to the model? This aims to find out if we can reproduce relevant repair sequences a developer also would have performed to propagate a change when repairing her inconsistencies. Thus, assessing our approach usefulness.

5.2 Results

5.2.1 RQ1

To propagate developer changes, we needed models where developers modified the model, and those modifications led to inconsistencies. Our models (VOD to **experiment**) are inconsistent, but we do not have the original changes which caused them. However, we can treat their repairs as developer changes

Table 4: Evaluation results

Model Name	#Repair Sequ.	Avg Sequ. Length	Repair time [s]
pro11	34	3	0.065
fullAdder	29	3	0.075
VOD	60	3	0.076
Curriculum Planer	937	4	25
eBullition	434	6	3
MVC	73	3	0.313
Inventory	4875	13	19
Tele	163	4	7
Course System	2650	6	0.924
Vacation Planer	620	4	0.842
Home Control System	3453	16	583
DESI	10	1	3
Micro	76	2	0.367
iTalks	1248	8	291
Hotel Management	955	21	18
Calendarium	834	4	34
Dice	342	4	0.672
dSpace	18	1	1
experiment	651	7	0.297

that might further cause inconsistencies and thus can be propagated in our approach. First, we use our models from Table 3 with the already existing inconsistencies (present before any applied change). We then analyze those inconsistencies and treat the resulting repairs as developer changes. After all, a repair is similar to a model change with the same implications as a change made by a developer.

Since we convert abstract to concrete repairs based on [Kretschmer et al(2017)Kretschmer, Khelladi, Demuth, Lopez-Herrejon, and Egyed], it may happen that this approach is not able to find concrete repairs for a given abstract repair. In this case, we use other abstract repairs from the same inconsistency. In the cases where there are no concrete repairs for an entire inconsistency, e.g. a completely new class must be added to the model, we cannot propagate the change further. In this case user intervention might be necessary. However, this was never the case. In fact, we are able to transform for each inconsistency at least some abstract repairs to concrete ones.

We successfully propagated 176 changes, each leading to one propagation tree, in our 18 models and repaired a total amount of 642 inconsistencies during this process leading to hundreds of repair sequences. For instance, we propagated five changes in model `Micro` while repairing nine caused inconsistencies.

This shows the feasibility of our approach that it can indeed successfully propagate changes to consistent model states.

5.2.2 RQ 2

Additionally, we also analyzed how many consistent model states we were able to detect in all our models. Table 4 shows the results of this analysis. Column **#Repair Sequ.** shows the total amount of all repair sequences of all propagated changes per model leading to a consistent model state. Please note that we added a limit (i.e., maximum tree level) to the model state trees of 50 repairs, which limits the maximum amount of repairs in a repair sequence to this number. This limit was introduced in cases where the propagation takes too long, resulting in too many repairs. However, we never reached this limit, and the maximum length of all repair sequences was 37 repairs. Each repair sequence represents one possibility to propagate a change to a consistent model state. This shows the correctness of our change propagation which allows developers to reach a consistent model state.

The column **Avg Sequ. Length** shows the average length of all repair sequences per model. This means that in most cases a developer change can be propagated with one to 21 repairs. Column **time** shows the average time per model it took to propagate a change to a consistent model state. In most cases we are able to propagate a change within milliseconds up to 10 minutes.

For example, applying five changes to the model *Micro* leads to a total amount of 76 repair sequences (15 on average per change) and an average repair sequence length of 2. To detect all 76 repair sequences our approach needed 367ms. Please note that a developer would propagate each change by looking at the computed repair sequences. From those sequences she might choose the one with the least amount of repairs, or one which affects only specific parts of the model (e.g., class diagrams). After that she can choose the next developer's change to be propagated. The breadth of the model state trees ranges from two to 176.

The time deviations in the column **time** from Table 4 are explained by the applied consistency rules and the resulting inconsistency. On smaller models (**# Model Elements**) the change propagation might take longer than on larger models since the inconsistencies can be more dependent on each other, i.e., repairing one inconsistency causes more inconsistencies. Furthermore, the complexity of the inconsistency plays also a major role, i.e., the amount of model elements affected by the inconsistency and the amount of OCL expressions used from the consistency rule. One complex inconsistency can have more impact on the runtime than many simple inconsistencies.

5.2.3 RQ 3

To assess the quality of our generated repair sequences, we applied the same strategy (explained in **RQ1**) to the two versioned models (*pro11* and *fullAdder*) from GitHub, and compared the repair sequences applied manually by

the developers to our computed repair trees. We were able to generate repair sequences consisting of all the repairs the developers also have applied in their manual repair from version 1 to version 2 in *pro11* and *fullAdder*. Additional 20 alternative repairs were provided per change on average. This shows that our change propagation approach is useful in computing repair sequences that developers actually applied manually. However, the limitation of those two models is, that we did not know the initial developer's change and we do not know how the actual change propagation process was executed. For example, how did the developers come up with possible repairs for the inconsistencies? How long did it take to propagate their change and how many modeling experience do they have? To gain more evidence we conducted an experiment to investigate change propagation based on model inconsistency repair.

The experiment was performed with students who had to propagate a set of changes and repair caused inconsistencies. For each inconsistency, a set of repairs was provided. In total, subjects had to repair 4 inconsistencies from 2 consistency rules with 46 repairs in total (minimum of 8 repairs and a maximum of 14 repairs per inconsistency).

The premise was always the same: the subjects were given inconsistencies with their possible repairs; and they were asked to choose one repair per inconsistency which propagates the initial change causing the inconsistency. The experiment thus set the initial condition to explore how developers propagate initial changes by repairing inconsistencies. Thus, we can compare the results with our automated change propagation approach.

In the experiment 22 students participated, all master-level computer science students at our university. Their professional programming/developer experience was an average of 2 Years and 3 months. We used a medium sized UML model consisting of Class, Sequence, and State chart diagrams with the consistency rules from Table 1.

In the experiment, every student came up with one repair sequence for each of the four provided changes. Those sequences contained on average four repairs consisting of renaming, removing already existing model elements or adding new model elements. Most of the applied repairs were renames of model elements. Only two students focused on adding new model elements (e.g., adding an operation or message). Also, every repair sequence from the students was unique, since everyone chose at least one repair the others did not. Thus we can compare our change propagation with 22 different repair sequences.

Our approach was able to generate all repair sequences from all students and additionally suggested 15 alternative repair sequences. For example, one change was to propagate a rename of a transition (similar to the one from Section 2). One student chose to propagate the change by first adding this operation to the corresponding class and then renaming the corresponding message in the sequence diagram. Another student chose to rename first a message from the class' corresponding lifeline, then adding this operation to the transition's corresponding class. Our computed model state tree in this case provided both applied repair sequences.

This further shows the usefulness of our approach to developers in repairing inconsistencies with change propagation. The time to generate the propagation tree for our four changes was 300ms (75ms on average per change). The average time for the students to propagate all four changes 15 minutes (3.75 minutes on average per change). Using our approach would thus reduce the time significantly needed to propagate a change in a consistent manner.

6 Threats to validity

In this section we discuss internal, external and conclusion threats to validity according to Wohlin et al. [Wohlin et al(2012)Wohlin, Runeson, Höst, Ohlsson, Regnell, and Wesslén]

6.1 Internal Validity

The internal threats to validity are centered on the used repairs in our evaluation. As explained in Section 5 we needed models where developers modified the model, and those modifications lead to inconsistencies. We did not find any models with this constraint. The threat to validity here is that we were not able to propagate changes that were directly caused by a developer. However, interpreting already existing repairs as developer changes is still a valid strategy, since those repairs have been caused by a developer change in the past, and those repairs are a direct consequence of this change. Repairs are also model changes with the same implications as a change made by a developer.

To further mitigate this threat we conducted an experiment (explained in **RQ3** from Section 5) with 22 students each having an average professional experience of two years to three months. In this experiment we provided a model and repairs for inconsistencies. The threat to validity here is that this model might be biased in a way that favors our approach. To mitigate this threat we used one of our models from industry (VOD) and changed the names of some operations, messages, etc. Also we provided the repairs for arising inconsistencies. To make sure we do not miss any, we performed a consistency check with our consistency analyzing tool [Reder and Egyed(2013), Reder and Egyed(2012a)] that provided all possible repairs.

Furthermore, the experiment only investigated the usefulness of our approach. We did not record the time it takes for the students to propagate multiple repair sequences, or choose from a list of repair sequences our approach generated. We are confident, that this threat is acceptable, since selecting from an already existing list is easier than creating the list manually, and then selecting a repair sequence.

6.2 External Validity

We implemented our approach for UML and OCL, although we are confident that the generation of model state trees and repair sequences is also applicable to other modeling and constraint languages, we cannot generalize our results to all modeling constraint languages. However, the only requirement to apply our approach to other domains, is to detect inconsistencies and compute concrete repairs to fix them. In future work we plan to evaluate on other modeling and constraint languages as well.

6.3 Conclusion Validity

Our evaluation gives promising results (quantitatively and qualitatively), demonstrating that our repair tree generation algorithm is very fast and reduces the amount of work a developer would have to perform drastically. The results in our case studies indicate that we are not only able to propagate changes the same way a developer would have had performed the propagation, but we also suggest additional correct propagation strategies. Only 22 students participated in our experiment which is not enough to gain statistical evidence. However, with those 22 students we were able to observe that our approach is indeed able to perform useful change propagation by providing the used repair sequences. To have more evident results, we plan to evaluate on more versioned models.

7 Related Work

Model evolution has gained significant momentum in the recent years. Common evolution types range from co-evolution of meta-models, consistency rules, transformation rules, etc. They all have in common that a developer change creates some kind of inconsistency, which has to be repaired in order to propagate this change.

UML model refactoring [Misbhauddin and Alshayeb(2015)] can also be seen close to our work. However, model refactoring is performed on consistent model states while keeping the model consistency, i.e., no inconsistencies before or after refactoring. Our approach in contrast is able to perform the change propagation from inconsistent model states to consistent model states. Our work is rather complementary by repairing possible inconsistencies caused by refactoring or any model change.

In this section we present and discuss approaches that are closest to ours.

Inconsistency checking and repair: Our approach relies on detecting inconsistencies and repairing them to be able to create new model states and propagate a developer change to impacted model elements. Briand et al. [Briand et al(2006)Briand, Labiche, O’Sullivan, and Sówka] proposed an approach to check UML consistency by applying an impact analysis to identify

consistencies in UML models. König et al. [König and Diskin(2017)] proposed an algorithm for consistency checking on inter-related models to reduce cost of inconsistency detection due to model merging. There is also approaches that rely on formal methods to detect inconsistencies (e.g., [Snook and Butler(2006), Cabot et al(2014) Cabot, Clarisó, and Riera, Khelladi et al(2015) Khelladi, Bendraou, Baair, Laurent, and Gervais]). Moreover, Jongeling et al. [Jongeling(2019)] proposes to detect inconsistencies and report on how to live with them in an industrial case study. In [Jongeling et al(2019) Jongeling, Ciccozzi, Cicchetti, and Carlson] they further allow to detect inconsistencies for heterogeneous models. Tröls et al. [Tröls et al(2019) Tröls, Mashkooor, and Egyed] also propose to detect inconsistencies over different kinds of artifacts and not just models. However, those approaches do not propose repairs.

All other approaches that provide repairs may be used as input for our approach to generate concrete repairs. For instance Xiong et al., Reder et al. and Jackson et al. use a very similar notation of abstract repairs [Xiong et al(2009) Xiong, Hu, Zhao, Song, Takeichi, and Mei, Jackson(2002), Reder and Egyed(2012b), Reder and Egyed(2012a)]. Those abstract repairs can then be used to generate concrete repairs based on already existing model information (including the developer change) [Kretschmer et al(2017) Kretschmer, Khelladi, Demuth, Lopez-Herrejon, and Egyed].

Our approach utilizes a similar method used by Reder et al. and Kretschmer et al., to detect inconsistencies [Reder and Egyed(2013)] and generate possible concrete repairs to fix them [Kretschmer et al(2017) Kretschmer, Khelladi, Demuth, Lopez-Herrejon, and Egyed]. Furthermore, Khelladi et al. propose an approach to rank repairs for a single inconsistency based on their side effects on the model, and analyze possible cycles of negative side effect [Khelladi et al(2019) Khelladi, Kretschmer, and Egyed]. The difference between those approaches and our approach is that we use the inconsistencies and repairs information to propagate developer changes to a consistent model state. Reder et al., Kretschmer et al. and Khelladi et al. do not consider developer changes and multiple model states for change propagation.

Approaches which use probabilistic generators to derive concrete repairs are not suited for a developer change propagation, since they might not consider developer created values or overwrite them during the generation process [Mougenot et al(2009) Mougenot, Darrasse, Blanc, and Soria, Hegedüs et al(2011) Hegedüs, Horváth, Ráth, Branco, and Varró]. Also they might not provide all possible solutions for a concrete repair [Hegedüs et al(2011) Hegedüs, Horváth, Ráth, Branco, and Varró, Macedo et al(2013) Macedo, Guimaraes, and Cunha].

Puissant et al. [Puissant et al(2015) Puissant, Van Der Straeten, and Mens] proposed a planning technique to generate repair plans for inconsistencies while aiming at a fast computation of repairs without assessing the relevance of the repair plans. Taentzer et al. [Taentzer et al(2017) Taentzer, Ohrndorf, Lamo, and Rutle] proposed to repair inconsistent models w.r.t. their meta models. They relied on the model change history which helped in reducing the amount of possible repairs. Similarly, Ohrndorf et al. [Ohrndorf

et al(2018)Ohrndorf, Pietsch, Kelter, and Kehrer] use an initial change to propose repairs for arising inconsistencies. In contrast to those approaches, we propagate a change further than one repair step, addressing possibly arising inconsistencies.

In summary, the only requirement for other approaches to be used is that they provide a repair mechanism for inconsistencies which takes also the developer change into account.

Co-evolution: In model co-evolution there exists a large body of work on how to detect, resolve and propagate changes to either the model or meta model [Hebig et al(2017)Hebig, Khelladi, and Bendraou, Paige et al(2016)Paige, Matragkas, and Rose]. We discuss some of the most recent work in this section. Kessentini et. al. propose to co-evolve models based on changes on the meta model automatically [Kessentini et al(2016)Kessentini, Sahraoui, and Wimmer]. They view this process as a multi objective optimization problem and use a specialized algorithm to propose a conflict resolution with the minimal amount of inconsistencies, changes to the model, and information loss. Furthermore, Mantz et al. propose to analyze meta model to model consistency based on graph data structures and use coupled graph transformation as their co-evolutions [Mantz et al(2015)Mantz, Taentzer, Lamo, and Wolter].

In contrast to those approaches we do not consider changes in the meta model, but we only consider changes in the model itself. Furthermore, we propagate those changes only within the model w.r.t. its consistency. Co-evolution is mainly interested in creating new versions of meta models or models based on changes in one or the other.

Change propagation: Semerath et al. propose to propagate a changes in a view model to model instances [Semeráth et al(2016)Semeráth, Debrecei, Horváth, and Varró, Semeráth Oszkár(2016)]. The challenge here is, to trace back the change in the abstract view to the model that involves complex logic analysis, which is done using SAT solvers. In contrast to their work, we only consider changes applied to the model, and propagate those changes based on the model's consistency. There exist also many approaches dealing with bidirectional model transformations with uncertainties [Eramo et al(2014)Eramo, Pierantonio, and Rosa, Eramo Romina(2015), Macedo and Cunha(2016)]. However, those approaches try to synchronize changes between two models and only consider the consistency between themselves.

Program repair: In program repair, literature tries to suggest repairs for malformed programs. Muslu et al. [Muşlu et al(2012)Muşlu, Brun, Holmes, Ernst, and Notkin] proposed to detect consequences of the code quick fixes but without exploring propagation to repair the program. Steimann et al., propose an approach for finding fixes for malformed programs based on constraint attribute grammars [Steimann et al(2016)Steimann, Hagemann, and Ulke, Steimann and von Pilgrim(2012)]. This approach proposes deep fixing which generates repairs that avoid new violations. Cuadrado et al. [Cuadrado et al(2018)Cuadrado, Guerra, and de Lara] proposed to compute quick fixes for ATL transformations. They also proposed to detect side effects for each quick fix. In contrast to our approach, these works do not consider initial de-

veloper changes to automatically propagate, and tries to avoid negative side effects at all. However, our approach uses negative side effects to propagate a change, which is helpful in cases where negative side effects are unavoidable.

Martinez et al., propose Astor a framework for automated program repair [Martinez and Monperrus(2019)]. It defines extension points to which users can attach already existing approaches for code transformations, search space navigation and validation candidate solutions. Astor generates program variants, and generates patches/fixes for the original program. In this context, many approaches exist that compute patches for program failures, such as [Le et al(2016)Le, Lo, and Le Goues, Mehtaev et al(2016)Mehtaev, Yi, and Roychoudhury, Long et al(2017)Long, Amidon, and Rinard, Saha et al(2017)Saha, Lyu, Yoshida, and Prasad, Xin and Reiss(2017)] The patches are then validated if they are indeed able to fix their corresponding bug. Other approaches propose to use mutation, to mine or to learn the patches, such as [Ghanbari et al(2019)Ghanbari, Benton, and Zhang, Chen et al(2019)Chen, Kommrusch, Tufano, Pouchet, Poshyvanyk, and Monperrus, Liu and Zhong(2018), Koyuncu et al(2020)Koyuncu, Liu, Bissyandé, Kim, Klein, Monperrus, and Le Traon] In contrast to those works, our approach is not a framework for program bug fixes. We propagate changes based on their influence of a model's consistency. Furthermore, our approach is based on consistency rules and a metamodel. The metamodel enables our approach to be used for different domains, e.g., software models, formal specifications, etc.

The novelty of our approach is that we explore the chain of consequences of initial changes made by developers, i.e., inconsistencies caused. Based on that knowledge we propose repair sequences a developer can use to continue these initial changes. In essence propagating the initial changes to other parts of the model until it is consistent again. Many existing approaches deal with suggesting repairs for inconsistencies. However, they do not investigate the meaning of sequences of repairs-a recursive exploration of non-contradictory changes. In that regard, other approaches do not take under consideration earlier changes made by developers and ongoing consequences.

To the best of our knowledge, there exists no approach which performs change propagation of developer changes to repair their caused model inconsistencies in depth.

8 Conclusion and Future Work

This paper presented a novel approach for automatically propagating developer changes. Our approach utilized model state trees to determine possible propagation strategies (i.e., repair sequences) to propagate the change to a consistent model state. The approach first detects inconsistencies in the model caused by the initial developer's changes, and generates repairs to fix them. It then executes those repairs to generate new model states and detects new caused inconsistencies in that state. This process is repeated recursively until no more inconsistencies are caused and the change has been propagated. We

refer to this as consistent change propagation. As the last step we analyze the model state tree and present repair sequences which guide the developer in propagating the initial change.

Our evaluation applied 20 consistency rules to 18 models. To check the relevance of our repair sequences, we used 2 versioned models from GitHub and performed an experiment with 22 students. We showed that our approach provides repair sequences that developers also have applied and additionally suggested alternative repair sequences. Furthermore, we have shown on larger models that our approach is scalable. We were able to propagate 176 developer changes within three seconds on average. Our approach saves time and effort that would have been spent on manually propagating a change through an entire model.

For future work, we plan to further evaluate on experiments to gain more evidence on consistent change propagation. Additionally, we will apply evolutionary algorithms to propagate changes in cases where there are too many repair sequences. This might help in cases where the developer is overwhelmed by the amount of repair sequences our approach suggests in the end. Finally, we will investigate other ranking heuristics for the repair sequences.

Acknowledgements This research was supported by the Austrian Science Fund FWF P 31989, the LIT Secure and Correct Systems Lab, and Pro2Future, a COMET K1-Centre of the Austrian Research Promotion Agency (FFG), grant no. 854184 co-funded by the Provinces of Upper Austria and Styria, and by the Natural Sciences and Engineering Research Council of Canada (NSERC) grant RGPIN-2017-0542.

References

- Briand et al(2006)Briand, Labiche, O’Sullivan, and Sówka. Briand LC, Labiche Y, O’Sullivan L, Sówka MM (2006) Automated impact analysis of uml models. *Journal of Systems and Software* 79(3):339–352
- Cabot et al(2014)Cabot, Clarisó, and Riera. Cabot J, Clarisó R, Riera D (2014) On the verification of uml/ocl class diagrams using constraint programming. *Journal of Systems and Software* 93:1–23
- Chen et al(2019)Chen, Kommrusch, Tufano, Pouchet, Poshyvanyk, and Monperrus. Chen Z, Kommrusch SJ, Tufano M, Pouchet LN, Poshyvanyk D, Monperrus M (2019) Sequencer: Sequence-to-sequence learning for end-to-end program repair. *IEEE Transactions on Software Engineering*
- Cuadrado et al(2018)Cuadrado, Guerra, and de Lara. Cuadrado JS, Guerra E, de Lara J (2018) Quick fixing atl transformations with speculative analysis. *Software & Systems Modeling* pp 1–35
- Demuth et al(2016)Demuth, Kretschmer, Egyed, and Maes. Demuth A, Kretschmer R, Egyed A, Maes D (2016) Introducing traceability and consistency checking for change impact analysis across engineering tools in an automation solution company: An experience report. In: *Software Maintenance and Evolution (ICSME), 2016 IEEE International Conference on*, IEEE, pp 529–538
- Egyed(2006). Egyed A (2006) Instant consistency checking for the UML. In: *28th International Conference on Software Engineering (ICSE 2006)*, Shanghai, China, May 20–28, 2006, pp 381–390, DOI 10.1145/1134339, URL <http://doi.acm.org/10.1145/1134339>
- Eramo et al(2014)Eramo, Pierantonio, and Rosa. Eramo R, Pierantonio A, Rosa G (2014) Uncertainty in bidirectional transformations. In: *Proceedings of the 6th International Workshop on Modeling in Software Engineering*, ACM, pp 37–42

- Eramo Romina(2015). Eramo Romina RG Pierantonio Alfonso (2015) Managing uncertainty in bidirectional model transformations. In: Proceedings of the 2015 ACM SIGPLAN International Conference on Software Language Engineering, ACM, pp 49–58
- Frakes and Kang(2005). Frakes WB, Kang K (2005) Software reuse research: Status and future. *IEEE transactions on Software Engineering* 31(7):529–536
- Ghanbari et al(2019)Ghanbari, Benton, and Zhang. Ghanbari A, Benton S, Zhang L (2019) Practical program repair via bytecode mutation. In: Proceedings of the 28th ACM SIGSOFT International Symposium on Software Testing and Analysis, pp 19–30
- Hebig et al(2016)Hebig, Quang, Chaudron, Robles, and Fernandez. Hebig R, Quang TH, Chaudron MR, Robles G, Fernandez MA (2016) The quest for open source projects that use uml: mining github. *ACM*, pp 173–183
- Hebig et al(2017)Hebig, Khelladi, and Bendraou. Hebig R, Khelladi DE, Bendraou R (2017) Approaches to co-evolution of metamodels and models: A survey. *IEEE Transactions on Software Engineering* 43(5):396–414
- Hegedüs et al(2011)Hegedüs, Horváth, Ráth, Branco, and Varró. Hegedüs Á, Horváth Á, Ráth I, Branco MC, Varró D (2011) Quick fix generation for dsmls. In: VL/HCC, pp 17–24, DOI 10.1109/VLHCC.2011.6070373, URL <http://dx.doi.org/10.1109/VLHCC.2011.6070373>
- Hegedüs et al(2015)Hegedüs, Horváth, and Varró. Hegedüs Á, Horváth Á, Varró D (2015) A model-driven framework for guided design space exploration. *Autom Softw Eng* 22(3):399–436, DOI 10.1007/s10515-014-0163-1, URL <http://dx.doi.org/10.1007/s10515-014-0163-1>
- Jackson(2002). Jackson D (2002) Alloy: a lightweight object modelling notation. *ACM Trans Softw Eng Methodol* 11(2):256–290, DOI 10.1145/505145.505149, URL <http://doi.acm.org/10.1145/505145.505149>
- Jongeling(2019). Jongeling R (2019) How to live with inconsistencies in industrial model-based development practice. In: 2019 ACM/IEEE 22nd International Conference on Model Driven Engineering Languages and Systems Companion (MODELS-C), IEEE, pp 642–647
- Jongeling et al(2019)Jongeling, Ciccozzi, Cicchetti, and Carlson. Jongeling R, Ciccozzi F, Cicchetti A, Carlson J (2019) Lightweight consistency checking for agile model-based development in practice. In: 15th European Conference on Modelling Foundations and Applications (ECMFA)
- Kessentini et al(2016)Kessentini, Sahraoui, and Wimmer. Kessentini W, Sahraoui H, Wimmer M (2016) Automated metamodel/model co-evolution using a multi-objective optimization approach. In: European Conference on Modelling Foundations and Applications, Springer, pp 138–155
- Khelladi et al(2015)Khelladi, Bendraou, Baarir, Laurent, and Gervais. Khelladi DE, Bendraou R, Baarir S, Laurent Y, Gervais MP (2015) A framework to formally verify conformance of a software process to a software method. In: Proceedings of the 30th Annual ACM Symposium on Applied Computing, ACM, pp 1518–1525
- Khelladi et al(2019)Khelladi, Kretschmer, and Egyed. Khelladi DE, Kretschmer R, Egyed A (2019) Detecting and exploring side effects when repairing model inconsistencies. In: Proceedings of the 12th ACM SIGPLAN International Conference on Software Language Engineering, pp 113–126
- König and Diskin(2017). König H, Diskin Z (2017) Efficient consistency checking of inter-related models. In: European Conference on Modelling Foundations and Applications, Springer, pp 161–178
- Koyuncu et al(2020)Koyuncu, Liu, Bissyandé, Kim, Klein, Monperrus, and Le Traon. Koyuncu A, Liu K, Bissyandé TF, Kim D, Klein J, Monperrus M, Le Traon Y (2020) Fixminer: Mining relevant fix patterns for automated program repair. *Empirical Software Engineering* pp 1–45
- Kretschmer et al(2017)Kretschmer, Khelladi, Demuth, Lopez-Herrejon, and Egyed. Kretschmer R, Khelladi DE, Demuth A, Lopez-Herrejon RE, Egyed A (2017) From abstract to concrete repairs of model inconsistencies: An automated approach. In: APSEC 2017, pp 456–465, DOI 10.1109/APSEC.2017.52, URL <http://doi.ieeecomputersociety.org/10.1109/APSEC.2017.52>

- Le et al(2016)Le, Lo, and Le Goues. Le XBD, Lo D, Le Goues C (2016) History driven program repair. In: 2016 IEEE 23rd International Conference on Software Analysis, Evolution, and Reengineering (SANER), IEEE, vol 1, pp 213–224
- Liu and Zhong(2018). Liu X, Zhong H (2018) Mining stackoverflow for program repair. In: 2018 IEEE 25th International Conference on Software Analysis, Evolution and Reengineering (SANER), IEEE, pp 118–129
- Long et al(2017)Long, Amidon, and Rinard. Long F, Amidon P, Rinard M (2017) Automatic inference of code transforms for patch generation. In: Proceedings of the 2017 11th Joint Meeting on Foundations of Software Engineering, pp 727–739
- Macedo and Cunha(2016). Macedo N, Cunha A (2016) Least-change bidirectional model transformation with qvt-r and atl. *Software & Systems Modeling* 15(3):783–810
- Macedo et al(2013)Macedo, Guimaraes, and Cunha. Macedo N, Guimaraes T, Cunha A (2013) Model repair and transformation with echo. In: Automated Software Engineering (ASE), 2013 IEEE/ACM 28th International Conference on, IEEE, pp 694–697
- Mantz et al(2015)Mantz, Taentzer, Lamo, and Wolter. Mantz F, Taentzer G, Lamo Y, Wolter U (2015) Co-evolving meta-models and their instance models: a formal approach based on graph transformation. *Science of Computer Programming* 104:2–43
- Martinez and Monperrus(2019). Martinez M, Monperrus M (2019) Astor: Exploring the design space of generate-and-validate program repair beyond genprog. *Journal of Systems and Software* 151:65–80
- Mechtaev et al(2016)Mechtaev, Yi, and Roychoudhury. Mechtaev S, Yi J, Roychoudhury A (2016) Angelix: Scalable multiline program patch synthesis via symbolic analysis. In: Proceedings of the 38th international conference on software engineering, pp 691–701
- Mens et al(2006)Mens, Van Der Straeten, and D'Hondt. Mens T, Van Der Straeten R, D'Hondt M (2006) Detecting and resolving model inconsistencies using transformation dependency analysis. In: International Conference on Model Driven Engineering Languages and Systems, Springer, pp 200–214
- Misbhauddin and Alshayeb(2015). Misbhauddin M, Alshayeb M (2015) Uml model refactoring: a systematic literature review. *Empirical Software Engineering* 20(1):206–251
- Mougenot et al(2009)Mougenot, Darrasse, Blanc, and Soria. Mougenot A, Darrasse A, Blanc X, Soria M (2009) Uniform random generation of huge metamodel instances. In: European Conference on Model Driven Architecture-Foundations and Applications, Springer, pp 130–145
- Muşlu et al(2012)Muşlu, Brun, Holmes, Ernst, and Notkin. Muşlu K, Brun Y, Holmes R, Ernst MD, Notkin D (2012) Speculative analysis of integrated development environment recommendations. *ACM SIGPLAN Notices* 47(10):669–682
- Ohrndorf et al(2018)Ohrndorf, Pietsch, Kelter, and Kehrer. Ohrndorf M, Pietsch C, Kelter U, Kehrer T (2018) Revision: a tool for history-based model repair recommendations. In: Proceedings of the 40th International Conference on Software Engineering: Companion Proceedings, pp 105–108
- OMG(2014). OMG (2014) Object constraint language. URL <http://www.omg.org/spec/OCL/2.4>
- Paige et al(2016)Paige, Matragkas, and Rose. Paige RF, Matragkas N, Rose LM (2016) Evolving models in model-driven engineering: State-of-the-art and future challenges. *Journal of Systems and Software* 111:272–280
- Puissant et al(2015)Puissant, Van Der Straeten, and Mens. Puissant JP, Van Der Straeten R, Mens T (2015) Resolving model inconsistencies using automated regression planning. *Software & Systems Modeling* 14(1):461–481
- Reder and Egyed(2012a). Reder A, Egyed A (2012a) Computing repair trees for resolving inconsistencies in design models. In: ASE, pp 220–229, DOI 10.1145/2351676.2351707, URL <http://doi.acm.org/10.1145/2351676.2351707>
- Reder and Egyed(2012b). Reder A, Egyed A (2012b) Incremental consistency checking for complex design rules and larger model changes. In: MODELS, pp 202–218, DOI 10.1007/978-3-642-33666-9_14, URL http://dx.doi.org/10.1007/978-3-642-33666-9_14
- Reder and Egyed(2013). Reder A, Egyed A (2013) Determining the cause of a design model inconsistency. *IEEE Trans Software Eng* 39(11):1531–1548, DOI 10.1109/TSE.2013.30, URL <http://dx.doi.org/10.1109/TSE.2013.30>

- Saha et al(2017)Saha, Lyu, Yoshida, and Prasad. Saha RK, Lyu Y, Yoshida H, Prasad MR (2017) Elixir: Effective object-oriented program repair. In: 2017 32nd IEEE/ACM International Conference on Automated Software Engineering (ASE), IEEE, pp 648–659
- Semeráth et al(2016)Semeráth, Debreceni, Horváth, and Varró. Semeráth O, Debreceni C, Horváth Á, Varró D (2016) Change propagation of view models by logic synthesis using sat solvers. In: Bx@ ETAPS, pp 40–44
- Semeráth Oszkár(2016). Semeráth Oszkár HÁVD Debreceni Csaba (2016) Incremental backward change propagation of view models by logic solvers. In: Proceedings of the ACM/IEEE 19th International Conference on Model Driven Engineering Languages and Systems, ACM, pp 306–316
- Snook and Butler(2006). Snook C, Butler M (2006) Uml-b: Formal modeling and design aided by uml. ACM Transactions on Software Engineering and Methodology (TOSEM) 15(1):92–122
- Steimann and von Pilgrim(2012). Steimann F, von Pilgrim J (2012) Constraint-based refactoring with foresight. In: European Conference on Object-Oriented Programming, Springer, pp 535–559
- Steimann et al(2016)Steimann, Hagemann, and Ulke. Steimann F, Hagemann J, Ulke B (2016) Computing repair alternatives for malformed programs using constraint attribute grammars. In: Proceedings of the 2016 ACM SIGPLAN International Conference on Object-Oriented Programming, Systems, Languages, and Applications, pp 711–730
- Taentzer et al(2017)Taentzer, Ohrndorf, Lamo, and Rutle. Taentzer G, Ohrndorf M, Lamo Y, Rutle A (2017) Change-preserving model repair. In: International Conference on Fundamental Approaches to Software Engineering, Springer, pp 283–299
- Tröls et al(2019)Tröls, Mashkoor, and Egyed. Tröls MA, Mashkoor A, Egyed A (2019) Multifaceted consistency checking of collaborative engineering artifacts. In: 2019 ACM/IEEE 22nd International Conference on Model Driven Engineering Languages and Systems Companion (MODELS-C), IEEE, pp 278–287
- Whittle et al(2014)Whittle, Hutchinson, and Rouncefield. Whittle J, Hutchinson J, Rouncefield M (2014) The state of practice in model-driven engineering. IEEE software 31(3):79–85
- Wohlin et al(2012)Wohlin, Runeson, Höst, Ohlsson, Regnell, and Wesslén. Wohlin C, Runeson P, Höst M, Ohlsson MC, Regnell B, Wesslén A (2012) Experimentation in software engineering. Springer Science & Business Media
- Xin and Reiss(2017). Xin Q, Reiss SP (2017) Leveraging syntax-related code for automated program repair. In: 2017 32nd IEEE/ACM International Conference on Automated Software Engineering (ASE), IEEE, pp 660–670
- Xiong et al(2009)Xiong, Hu, Zhao, Song, Takeichi, and Mei. Xiong Y, Hu Z, Zhao H, Song H, Takeichi M, Mei H (2009) Supporting automatic model inconsistency fixing. In: ESEC FSE, pp 315–324, DOI 10.1145/1595696.1595757, URL <http://doi.acm.org/10.1145/1595696.1595757>