



**HAL**  
open science

## Modelling of drought stress in field crops by crop growth model DAISY

Eva Pohanková, Petr Hlavinka, Jozef Takáč, Martin Bednařík, Miroslav Trnka

### ► To cite this version:

Eva Pohanková, Petr Hlavinka, Jozef Takáč, Martin Bednařík, Miroslav Trnka. Modelling of drought stress in field crops by crop growth model DAISY. ICROP2020: Second International Crop Modelling Symposium , Feb 2020, Montpellier, France. hal-02950322

**HAL Id: hal-02950322**

**<https://inria.hal.science/hal-02950322>**

Submitted on 27 Sep 2020

**HAL** is a multi-disciplinary open access archive for the deposit and dissemination of scientific research documents, whether they are published or not. The documents may come from teaching and research institutions in France or abroad, or from public or private research centers.

L'archive ouverte pluridisciplinaire **HAL**, est destinée au dépôt et à la diffusion de documents scientifiques de niveau recherche, publiés ou non, émanant des établissements d'enseignement et de recherche français ou étrangers, des laboratoires publics ou privés.

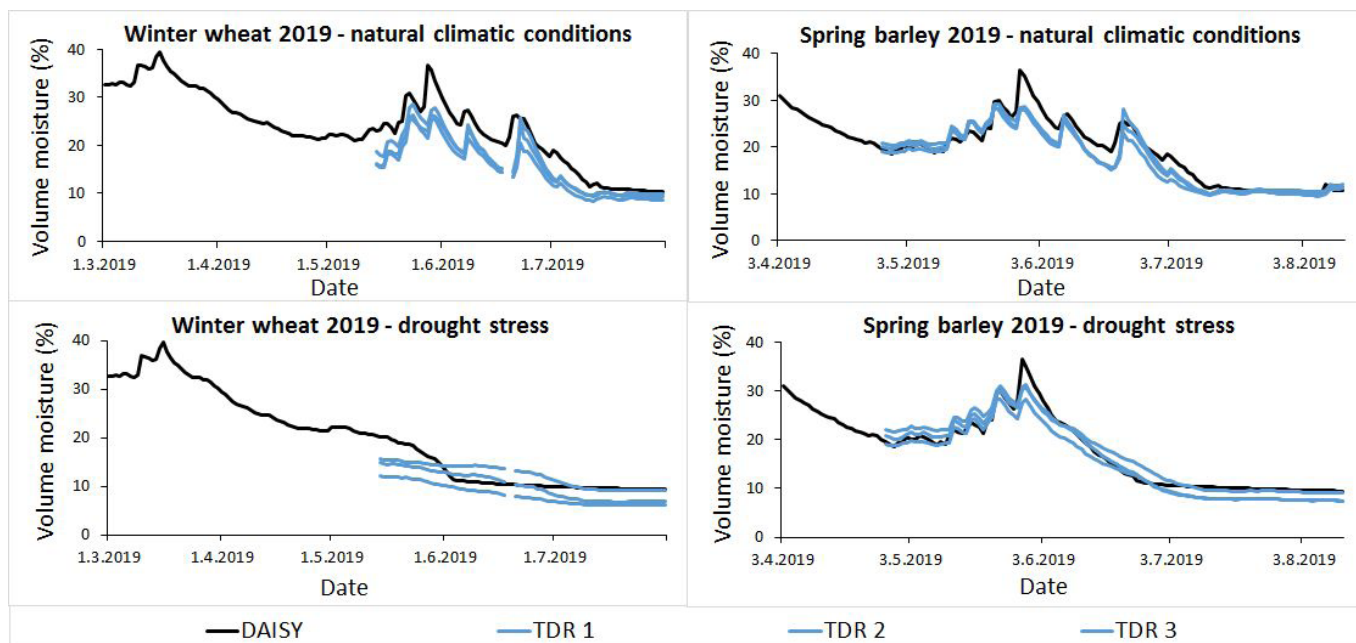
## Modelling of drought stress in field crops by crop growth model DAISY

Pohanková Eva<sup>1</sup> (Eva.Pohankova@seznam.cz), Hlavinka Petr<sup>2</sup>, Takáč Jozef<sup>3</sup>, Bednařík Martin<sup>2</sup>, Trnka Miroslav<sup>4</sup>

<sup>1</sup> Department of Climate Change Impacts, Global Change Research Institute CAS, Brno, Česká republika, Czech Republic; <sup>2</sup> Department of Climate Change Impacts, Global Change Research Institute CAS, Brno, Czech Republic; <sup>3</sup> Soil Science and Conservation Research I, Bratislava, Slovakia; <sup>4</sup> Department of Climate Change Impacts on, Global Change Research Institute CAS, Brno, Czech Republic

The field experiment with rain-out shelters for precipitation reduction was established in Bohemian-Moravian highlands (Domanínek experimental station, 49°31'42»N, 16°14'13»E, altitude 560 m) in 2014. The purpose of this field experiment is to gather sufficient data for modelling the crop's response to the climatic conditions expected in the future, in this case drought stress. Winter wheat and spring barley are the most widely grown cereals in the Czech Republic. The main aim of this study was evaluate a drought stress effect on winter wheat (cultivar Bohemia) and spring barley (cultivar Bojos). At the same time the ability of crop model DAISY to simulate drought stress response was tested. The monitored parameters were development, grain yield and soil moisture on two growth seasons (2017/2018 and 2018/2019) for two experimental variants with three repetitions in each crops (the first variant = natural climatic conditions; the second variant = drought stress is induced using the mobile rain-out shelters made of corrugated clear polycarbonate material and installed in the crop canopy). In each variant were sensors TDR (time domain reflectometry, CS 616, Campbell Scientific Inc., Shepshed, UK) to measure the soil water content placed vertically to monitor the soil water content from the surface to a depth of 30 cm. Observed and measured parameters such as terms of phenological phases, soil moisture and grain yields were compared with modelled data. The simulation results with respect to the phenological phase of flowering/maturity showed a slight deviation from the observations, from +3/-1 to -3/+1 days for winter wheat and -6/-2 to +5/+1 days for spring barley. The precipitation was reduced during the growth season. A reduction of precipitation by 138,2 mm and 203,8 mm for winter wheat 2018 and 2019 and a reduction of precipitation by 87,6 mm and 102,2 mm for spring barley 2018 and 2019, led to decrease in grain yields. Grain yield for winter wheat/spring barley decreased from 7.43 /4.97 t/ha (natural climatic conditions) to 4.19/3.70 t/ha (drought stress was induced using the rain-out shelters) in 2018 and from 6.72/6.12 t/ha to 4.99/4.44 t/ha in 2019. The results of this study showed that the crop model DAISY relatively satisfactorily simulates the main feature soil water content dynamics as measured by TRD sensors in 2018 and 2019 and reproduce the drought stress for crop yields of winter wheat and spring barley to a certain extent. The crop model DAISY simulated the movement of soil water based on the numerical solution of Richards' equation. The decrease in the simulated grain yield after precipitation reduction is obvious. The simulation results for winter wheat/spring barley grain yield in natural climatic conditions were 8.04/3.98 t / ha in 2018 and 8.01/6.12 t/ha in 2019. The simulation results for winter wheat/spring barley grain yield in drought stress were 4.42/2.54 t/ha in 2018 and 4.40/4.20 t/ha in 2019. When rain-out shelters were used, real winter wheat/spring barley grain yields were reduced by 3.24/1.27 t/ha in 2018 and by 1.73/1.68 t/ha in 2019. The model underestimated the yields of winter wheat/spring barley for the sheltered variant by 3.62/1.44 t/ha in 2018 and by 3.61/1.92 t/ha in 2019. The study and contribution was funded through SustES - Adaptation strategies for sustainable ecosystem services and food security under adverse environmental conditions" project no. CZ.02.1.01/0.0/0.0/16\_019/0000797.

.../...



Comparisons between the simulated (DAISY) and measured (by sensors TDR, under the rain-out shelters as drought stress and outside as natural climatic conditions) soil water content from 0.0 to 30 cm.

**Keywords:** crop development, soil moisture, grain yields, DAISY crop model.

#### References:

1. Wimmerová, M., Hlavinka, P., Pohanková, E., Kersebaum, K. C., Trnka, M., Klem, K., & Žalud, Z., *Acta Univ. Agric. Silvic. Mendelianae Brun.* 2018, 66, 225-233. *Acta Univ. Agric. Silvic. Mendelianae Brun.*, 66, 225-233.
2. Abrahamsen, P., & Hansen, S., *Daisy: an open soil-crop-atmosphere system model. Environmental modelling & software*, 2000, 15(3), 313-330.
3. Pohanková, E., Hlavinka, P., Takáč, J., Žalud, Z., & Trnka, M., *Calibration and validation of the crop growth model daisy for spring barley in the Czech Republic. Acta Universitatis Agriculturae et Silviculturae Mendelianae Brunensis*, 2015, 63(4), 1177-1186.
4. Hlaváčová, M., Klem, K., Rapantová, B., Novotná, K., Urban, O., Hlavinka, P., ... & Wimmerová, *Interactive effects of high temperature and drought stress during stem elongation, anthesis and early grain filling on the yield formation and photosynthesis of winter wheat. Field crops research*, 2018, 221, 182-195.