



Reading with maculopathy: the inhibitory effect of word neighborhood size is modulated by word predictability and reading proficiency

Lauren Sauvan, Natacha Stolowy, Carlos Aguilar, Thomas François, Nuria Gala, Frederic Matonti, Eric Castet, Aurelie Calabrese

► To cite this version:

Lauren Sauvan, Natacha Stolowy, Carlos Aguilar, Thomas François, Nuria Gala, et al.. Reading with maculopathy: the inhibitory effect of word neighborhood size is modulated by word predictability and reading proficiency. 2020. hal-02920126v1

HAL Id: hal-02920126

<https://inria.hal.science/hal-02920126v1>

Preprint submitted on 24 Aug 2020 (v1), last revised 16 Nov 2020 (v2)

HAL is a multi-disciplinary open access archive for the deposit and dissemination of scientific research documents, whether they are published or not. The documents may come from teaching and research institutions in France or abroad, or from public or private research centers.

L'archive ouverte pluridisciplinaire **HAL**, est destinée au dépôt et à la diffusion de documents scientifiques de niveau recherche, publiés ou non, émanant des établissements d'enseignement et de recherche français ou étrangers, des laboratoires publics ou privés.

Title: Reading with maculopathy: the inhibitory effect of word neighborhood size is modulated by word predictability and reading proficiency

Authors: Lauren Sauvan¹, Natacha Stolowy¹, Carlos Aguilar², Thomas François³, Núria Gala⁴, Frédéric Matonti⁵, Eric Castet⁶, Aurélie Calabrèse^{7*}

Affiliations:

¹ North Hospital, Marseille France

² Mantu Lab, Amaris Research Unit, Sophia Antipolis, France

³ UCLouvain, IL&C, CENTAL, Belgique

⁴ Aix-Marseille Univ., CNRS UMR 7309, Aix-en-Provence, France

⁵ Centre Paradis Monticelli, Marseille, France

⁶ Aix-Marseille Univ., CNRS UMR 7290, Marseille, France

⁷ Université Côte d'Azur, Inria, Sophia Antipolis, France

Corresponding author:

Aurélie Calabrèse (AC)

aurelie.calabrese@inria.fr

2004 Route des Lucioles, 06902 Valbonne, France

22 **Word count:**

23 Abstract = 324 words

24 Main text (not including Methods) = 3451 words

25 *Intro = 1080; Methods = 1324; Results = 936; Discussion = 1435*

26 References = 55; Figures = 6; Tables = 5

27

28 **Funding:**

29 This work was supported by the Fondation de France and by the Belgian FNRS.

30

31 **Declarations of interest:**

32 None

33

34

ABSTRACT

Background: For normally sighted readers, word neighborhood size (i.e., the total number of words that can be formed from a single word by changing only one letter) has a facilitator effect on word recognition. When reading with central field loss (CFL), however, individual letters may not be correctly identified, leading to possible misidentifications and a reverse neighborhood size effect. Here we investigate this inhibitory effect of word neighborhood size on reading performance and whether it is modulated by word predictability and reading proficiency.

Methods: Nineteen patients with binocular CFL from 32 to 89 years old (mean \pm SD = 75 ± 15) read short sentences presented with the self-paced reading paradigm. Accuracy and reading time were measured for each target word read, along with its predictability, i.e., its probability of occurrence following the two preceding words in the sentence using a trigram analysis. Linear mixed effects models were then fit to estimate the individual contributions of word neighborhood size, predictability, frequency and length on accuracy and reading time, while taking into account patients' reading proficiency.

Results: For the less proficient readers who quit reading on a daily basis, we found that the effect of neighborhood size was reversed compared to normal readers and of higher amplitude than the effect of frequency. Furthermore, this inhibitory effect is of greater amplitude (up to 50% decrease in reading speed) when a word is not easily predictable because its chances to occur after the two preceding words in a specific sentence are rather low.

Conclusion: Severely impaired patients with CFL often quit reading on a daily basis because this task becomes simply too exhausting. Based on our results, we envision

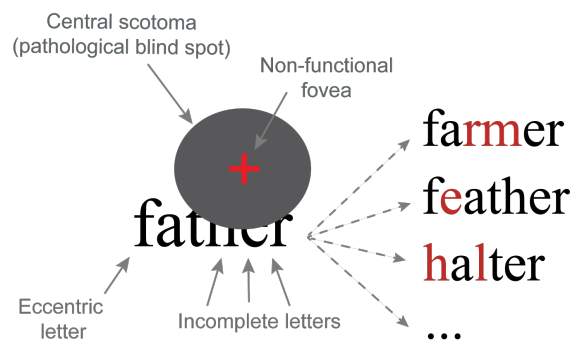
59 lexical text simplification as a new alternative to promote decisive rehabilitation in
60 these patients. By increasing reading accessibility for those who struggle the most,
61 text simplification might be used as an efficient readaptive tool and daily reading
62 assistive technology, fostering overall reading ability and fluency through increased
63 practice.

INTRODUCTION

Individuals with Central Field Loss (CFL) induced by maculopathy experience severely impaired functional vision, leading to major incapacitating reading deficits [1,2,3]. Reading speed being a strong determinant of overall quality of life in low-vision patients of all ages, there is a real societal need to help promote their reading performance through readaptive interventions and assistive reading technology [4,5]. Such initiative requires a better characterization of the underlying factors involved in their overall reading deficit, which remain poorly understood. The influence of psycholinguistic factors, for instance, have been generally overlooked in the context of low vision. In 2016, Calabrèse et al. investigated eye movement characteristics when low-vision patients with CFL read short sentences and showed that specific disruptions in fixation patterns occurred in the presence of low-frequency words [6]. This result alone suggests that psycholinguistic factors may be an important determinant of reading performance for low vision, opening the way for further investigations and potential use of text simplification for the visually impaired.

Word frequency and word neighborhood size are some of the most important lexical factors known to affect reading in normal vision [7,8]. However, whether findings from normal readers can be applied to low-vision individuals is not obvious. In the case of CFL, visual input is deteriorated because of blur, distortion and/or missing parts [9] and access to text is only partial (Fig. 1). For instance, when reading the word “father” with a central blind spot, some letters are totally or partially occluded by the scotoma. In addition, complete letters that fall out of the scotoma must be identified with eccentric portions of the retina, yielding degraded letter identification due to low acuity and strong crowding [10]. Therefore, incomplete and/or eccentric

89 letters may not be correctly identified, leading to many possible misidentifications
 90 (“farmer”, “feather”, “halter”, etc.). Since bottom-up visual input is not reliable,
 91 patients must rely much more on top-down linguistic inference than normally sighted
 92 readers [11,12,13]. For this reason, the effect of lexical factors on reading
 93 performance should be rather different in visually impaired readers than reported
 94 before with normally sighted individuals.



95
 96 **Figure 1: The presence of a central scotoma occludes part of the word “father”, leading to**
 97 **possible misidentifications (e.g., farmer, feather, halter) and a greater need for linguistic**
 98 **inference**

99 A first attempt to characterize this effect has been made recently by Stology et al.
 100 who inspected the effect of word frequency on the reading performance of CFL
 101 readers [14]. The clear-cut frequency effects they reported on word reading time
 102 validated the hypothesis that, as for normal readers, low-frequency words tend to
 103 decrease reading speed with CFL patients. However, the amplitude of this effect was
 104 much larger (differences in the range of seconds) than it had been reported before
 105 with normal vision (range of milliseconds). More interestingly, the same effect of
 106 frequency was not observed for all pairs of synonyms. For instance, the high-
 107 frequency word “*utiliser*” (*use*) was read on average more slowly than its lower
 108 frequency synonym “*employer*” (*employ*). Such observation suggests that frequency
 109 cannot be the only predictive linguistic factor of reading speed with CFL. This

reasoning was a cornerstone for the present work that aims at investigating two other psycholinguistic factors extensively studied in normal reading: orthographic similarity and word predictability.

The most common measure of orthographic similarity in the psychological literature is Coltheart's orthographic neighborhood size metric 'N' [15]. N measures the number of close orthographical neighbors of a stimulus word and is defined as the total number of words that can be formed by changing one letter, while preserving letter positions. For example, "shore" has many neighbors, including chore, score and share, while "neighbor" has 0 neighbor. For skilled readers with normal vision, N (i.e., word neighborhood size) seems to have a facilitator effect on word recognition: the more neighbors, the faster a word is identified - although this effect is now often assumed to be task dependent and language dependent (see [16,17] for reviews). It is possible that the visual constraint imposed by the presence of a central scotoma, hiding portions of the text (*i.e.*, letters) and forcing to use eccentric vision, may lead to a reverse effect of neighborhood size. The lack of high resolution coupled with missing visual information, would lead CFL readers to confuse one word with its orthographic neighbors, creating even more uncertainty for large word neighborhood size. Therefore, we hypothesize that, unlike normal vision, word neighborhood size has a negative effect on reading speed with CFL (Hypothesis 1). This first hypothesis has recently received support through some preliminary work of ours [18].

In addition to frequency and orthographic similarity, word predictability counts as one of the most influential processing factors during word recognition with normal vision [19]. The predictability of a target word in sentence (based on the context induced by the preceding words) has been shown to influence processing speed by enabling

134 readers to make forward inferences (i.e. predictions about the probable upcoming
135 word). Thus, as shown by eye movement studies, highly predictable words: (1) are
136 skipped more often, (2) are more likely to be identified within a single fixation and (3)
137 yield overall shorter fixations during sentence reading [20,21]. In the context of CFL,
138 word predictability should also play an additional role by reducing uncertainty when
139 identifying a word with many confusable neighbors. In the sentence “You should go
140 for a walk along the shore” for instance, even if the word “shore” has many
141 potentially confusable neighbors, most of them (such as chore, score and share) may
142 be easily ruled out based on semantic context and forward inferences. Therefore, we
143 hypothesize that the amplitude of the neighborhood size effect is influenced by word
144 predictability: the more predictable a word is (thanks to sentence context), the smaller
145 the effect of neighborhood size should be (Hypothesis 2).

146 Finally, for normally sighted adult readers, word predictability does influence reading
147 processing differently depending on individual reading skills [21,22]. Simply put, less
148 skilled readers rely more on context for word identification than highly skilled readers
149 do. Based on this result, we assume that results of CFL individuals should also be
150 influenced by their reading proficiency. Therefore, we hypothesize that the interaction
151 between neighborhood size and word predictability (see Hypothesis 2) depends on
152 patients’ reading proficiency. Our prediction is that this interaction will be more
153 pronounced for less proficient readers than for proficient ones (Hypothesis 3).

154 In short, the purpose of this work is two-fold: (1) to test the hypothesis that word
155 neighborhood size exerts an inhibitory effect on reading performance with CFL
156 (Hypothesis 1; Analyses 1 & 2) and (2) to test whether this effect is modulated by
157 word predictability and reading proficiency (Hypothesis 2 & 3; Analysis 3).

METHODS

Participants

19 patients (13 females) were recruited from the Low-Vision Clinic of the La Timone Hospital (Marseille, France) between March and June 2017. All presented a bilateral central scotoma with a monocular acuity of 0.4 logMAR or worse in their better eye. Patients with ophthalmologic disorders other than maculopathy (e.g. glaucoma) or cognitive disorders were not included. The following information was collected for each participant: age, etiology, lens status, duration of maculopathy, field loss (central only vs. central + peripheral), low-vision rehabilitation history and daily reading time. Recruited participants ranged in age from 32 to 89 years (mean \pm SD = 75 \pm 15). Mean best-corrected visual acuity was 0.81 \pm 0.28 logMAR. Details of the participants' demographic, visual and reading characteristics are given in Table 1. The research was carried out in accordance with the Code of Ethics of the World Medical Association (Declaration of Helsinki). Informed consent was obtained from all participants after complete explanation of the nature and possible consequences of the study.

Partici pants	Gen der	Age (years)	Etiology	Disease onset (years)	Low- vision rehabili tation	Visual acuity (logMAR)	Lens status	Daily reading time (min/day)
1	M	76	Atrophic AMD	2	Yes	1	Phakic	0
2	F	77	Atrophic AMD	7	No	0.4	Pseudophakic	45
3	F	80	Atrophic AMD	7	Yes	1	Pseudophakic	0
4	F	80	Atrophic AMD	5	Yes	0.8	Phakic	0
5	F	83	Atrophic AMD	12	Yes	0.5	Phakic	60
6	F	83	Atrophic AMD	2	Yes	0.5	Pseudophakic	0
7	F	85	Atrophic AMD	15	No	0.7	Pseudophakic	60
8	M	86	Atrophic AMD	8	Yes	0.7	Pseudophakic	60
9	M	88	Atrophic AMD	20	Yes	0.7	Phakic	60
10	F	78	Exudative AMD	3	No	1.1	Pseudophakic	0
11	F	87	Exudative AMD	2	Yes	0.5	Pseudophakic	10

12	M	89	Exudative AMD	3	Yes	0.4	Pseudophakic	30
13	F	48	Stargardt's disease	35	Yes	1.3	Phakic	25
14	F	72	Stargardt's disease	16	No	1	Phakic	120
15	F	32	Cone dystrophy	30	No	1	Phakic	120
16	M	73	Diabetic retinopathy	10	No	0.7	Pseudophakic	0
17	M	59	Myopic retinopathy	15	Yes	1	Phakic	0
18	F	70	Myopic retinopathy	20	Yes	1.3	Pseudophakic	120
19	F	70	Myopic retinopathy	70	Yes	0.8	Pseudophakic	30

Table 1: Participants' demographic, visual and reading characteristics.

Visual acuity and lens status are given for the tested eye only. Participants with central scotoma only are highlighted in red. Participants with central scotoma and peripheral lesions are highlighted in blue.

Apparatus and stimuli

Experiments were run at 60 Hz with an LCD HP LE2201W monitor (full display area: 1680 x 1050 pixels; 47.4 x 29.6 cm). Stimuli (i.e. sentences) were generated with the PsychoPy library [23,24] and presented on a 1400 x 1050 pixel window that subtended 56° x 42° at 40 cm. Sentences were aligned to the left and displayed in Courier (non-proportional font) in black on a white background. Print size was chosen optimally for each participant as the value of his/her critical print size, measured before testing with a French computerized version of MNREAD [25,26]. Reading was monocular (eye with better visual acuity) with an appropriate correction for near vision (wide-field Metrovision lenses).

Reading material

Reading material was created in French using ReSyf, a French lexicon with disambiguated and graded synonyms [27] and Lexique3, a lexical database with word frequencies of standard written and oral French [28]. First, we created a pool of target words (Figure 2 – Step 1), by selecting 32 pairs of synonyms matching the following

criteria: (1) equal length within a pair (from 3 to 8 characters); (2) difference in number of orthographic neighbors (N) comprised between 5 and 10 within a pair; (3) frequency ratio between a large neighborhood word and a its small neighborhood synonym could be either <1 or >1 . Second, 32 pairs of matching sentences were created so that each word from a pair could fit within either sentence of the corresponding sentence pair (Figure 2 – Step 2). Three criteria were used: (1) all sentences had similar length (42 to 65 characters; mean \pm SD = 54 ± 6), with a maximum difference of 5 characters within a pair; (2) pairs of sentences were specifically designed to fit the single and most frequent common sense of a synonym pair; (3) within each sentence, comprised of ‘n’ words, the target word could be located in any of these three locations: ‘n-1’, ‘n-2’, or ‘n-3’. Target words were never presented in position ‘n’ to avoid any interference from a possible wrap-up effect [14,29]. At last, we created our final reading material by combining sentence pairs with their matching synonym pairs (Figure 2 - Step 3). In Condition 1, the first word of a pair was assigned to the first sentence of the corresponding pair, while the second word was assigned to the second sentence, thus creating 64 full sentences. In Condition 2, the “sentence – word” pairing was reversed to create a different set of 64 full sentences. These two experimental conditions allowed us to counterbalance any potential effect of the sentence structure and complexity (by randomly assigning participants to Condition 1 or 2), while providing two different measures of predictability for a single target word.

Step 1: Selection of 32 pairs of synonyms

Synonym 1

shore - 13 neighbors (share, score, short, ...)

Synonym 2

coast - 3 neighbors (roast, toast, boast)

Length = 5 characters
Diff. = 10 neighbors

Selection criteria within a pair
1- Equal length - 3 to 8 characters
2- Difference in neighbors number - 5 to 10
3- No restriction on the frequency ratio

Step 2: Creation of 32 matching pairs of sentences

Sentence A

You should go for a walk along the [...] to relax
(44 characters / synonym position = n-2)

Sentence B

My parents have worked by the [...] for many years
(45 characters / synonym position = n-3)

Creation criteria within a pair
1- Equivalent length - 5 characters difference max.
2- Must fit the **same sense** with both synonyms
3- Must include synonym in position
n-1, n-2 or n-3

Length diff. = 1 character
Unique sense = 'seaboard'

Step 3: Creation of the final corpus of sentences

Condition 1 - 64 sentences

Sentence A + **Synonym 1**
*You should go for a walk along the **shore** to relax.*

Sentence B + **Synonym 2**
*My parents have worked by the **coast** for many years*

Condition 2 - 64 sentences

Sentence A + **Synonym 2**
*You should go for a walk along the **coast** to relax*

Sentence B + **Synonym 1**
*My parents have worked by the **shore** for many years*

Figure 2: Creation of the reading material.

Illustration of the reading material creation, using the synonym pair “*shore / coast*”. Both words in this example contain 5 characters. Their difference in number of neighbors is 10. Sentences A and B were created so either word of this synonym pair can fit in both sentences. In Condition 1, sentence A contains the target word 1 (‘shore’) and sentence B contains the target word 2 (‘coast’). In Condition 2, the pairing is reversed. Note that this example is given in English to ease understanding. See Supplementary Material for the complete set of French sentences created.

Reading procedure and experimental design

Sentences were presented within 4 blocks of 16 trials (8 pairs of sentences) each. Participants were randomly assigned to Condition 1 or 2 and read between two to four blocks, depending on their reading speed and level of fatigue. Sentences were displayed randomly within each block with non-cumulative self-paced reading, where sentences appear as a whole but with all words masked by strings of “x” [30,31,32] (Figure 3). As opposed to other reading paradigms specifically designed for low vision, such as “word mode” [33], self-paced reading allows to present words

Figure 3: Self-paced Reading paradigm.

Words are revealed one at a time by the participant, using keyboard presses. A press on the right arrow key will unmask the upcoming word (while masking the currently visible word) and a press on the left arrow key will unmask the previous word (while masking the currently visible word). For words unmasked only once (e.g. word 1), the total reading time equals the 1st-pass reading time. For words unmasked more than once (e.g. word 2), the total reading time is the sum of each individual reading time pass.

Measure of word predictability

For each target word, we estimated its percentage of occurrence following the two preceding words in the sentence based on a large corpus of French texts. To do so, we selected in our reading material all series of three consecutive words (i.e., 3-grams or trigrams) ending with a target word. Using the Google Books Ngram Viewer resource [34], we extracted for each of these 128 trigrams (64 sentences x 2 conditions) its percentage of occurrence in the ‘French 2012’ corpus, a corpus of 792 118 digitized books published in French between 1800 and 2008. This measure will be referred to as the ‘trigram occurrence’.

Measure of reading proficiency

The amount of daily reading (reported subjectively by each patient in minutes per day; cf. Table 1) was used to create the binary variable “Daily reading” (*yes or no*), later used as a “proxy” for reading proficiency. Patients who reported to read at least 10 minutes each day were categorized as Daily reading – *yes*; The other patients who reported to read between 0 and 10 minutes daily were categorized as Daily reading – *no*.

Statistical analysis

Statistical analyses were carried out using R [35]. Reading accuracy (i.e. binary variable) was analyzed by fitting a generalized linear mixed-effects model (GLME; Analysis 1), while reading time (i.e. continuous variable) was analyzed with linear mixed-effects models (LME; Analyses 2 & 3), both allowing the modeling of experimental designs with unbalanced repeated measures [36,37]. Models were constructed with either target word accuracy or target word reading time as the dependent variable. Several factors of interest (Table 2) were included as independent variables to inspect their effect on accuracy and reading time, as well as their potential interaction with each other. The random structure of all models included a random intercept for participants, assuming a different “baseline” performance level for each individual, as well as random intercept for each target word. Before analysis, variables of interest were inspected and transformed as follow to satisfy the assumptions of parametric statistical tests [38,39]: reading time and word frequency were transformed in natural logarithm (ln) units, trigram occurrence was transformed with the ordered quantile normalization and context amount was square-root transformed. Word frequency and word length were centered around their mean. Optimal model structures were assessed using the Akaike Information Criterion (AIC) and likelihood-ratio tests [40]. Significance of the fixed effects was estimated using z-values for the GLME model and t-values for the LME models. Z- and t- values larger than 2 were considered significant, corresponding to a 5% significance level in a two-tailed test [41,42]. In the Results section fixed-effects estimates are reported along with their z- and t-values and 95% confidence intervals [43].

Variable name	Unit / Transformation	Centered	Description
Target word characteristics			
Neighborhood size (N)	--	--	Number of neighbors
Frequency (ln)	Natural log	Yes	Occurrences/million
Length	--	Yes	Number of characters
Sentence characteristics			
Trigram occurrence	Ordered quantile normalization	--	Percentage of occurrence for each trigram ending with a target word
Participant's individual characteristics			
Age	Years	--	--
Visual Acuity	LogMAR	--	--
Type of field loss	<ul style="list-style-type: none"> • Central only • Central + peripheral 	--	--
Still reading daily	<ul style="list-style-type: none"> • Yes • No 	--	--

Table 2: Description of the different factors included as independent variables in the linear mixed-effects models.

RESULTS

Analysis 1 – Effect of neighborhood size on reading accuracy

On average, target words were read accurately 94% of the time, with individual variations ranging from 62 to 100% depending on patients. When all implemented in a GLME model, N, word frequency, word length and word predictability (expressed as trigram occurrence) showed no significant effect on accuracy (Table 3). As estimated by the model, percentage of accuracy for patients who continue reading on a daily basis was 99.1% ($\exp(4.716) / (1 + \exp(4.716)) * 100$) ($z = 7.694$; $p < 0.001$; 95%CI = [3.65; 6.17]). For patients who quit daily reading activities, percentage of accuracy was 97.3% ($\exp(4.716-1.126) / (1 + \exp(4.716-1.126)) * 100$). This 1.8% difference barely reached significance ($z = -2.064$; $p = 0.039$; 95%CI = [-2.31; -

0.03]). Figure 4 shows the null effect of N on accuracy, for these two groups of participants.

	Estimate	Standard Error	z-value	p-value	95% Confidence Interval
Intercept	4.716	0.613	7.694	<0.001	[3.65; 6.17]
Word neighborhood size (N)	-0.058	0.054	-1.069	0.285	[-0.17; 0.05]
Word frequency (ln)	0.147	0.147	1.003	0.316	[-0.15; 0.46]
Word length	-0.028	0.213	-0.13	0.897	[-0.47; 0.41]
Trigram occurrence	0.361	0.292	1.236	0.216	[-0.21; 0.98]
Daily reading No	-1.126	0.545	-2.064	0.039	[-2.31; -0.03]

Table 3: Fixed-effects estimates from the GLME model (Analysis 1).

The dependent variable is ‘Target word reading accuracy’. The intercept estimate is the predicted value of the dependent variable when all independent variables are at 0 (continuous variables) or at their reference level (categorical variable). Reference level for the binary factor “Daily reading” (representing reading proficiency) is ‘yes’. Factors showing a significant effect on reading accuracy are in bold font and highlighted in grey.

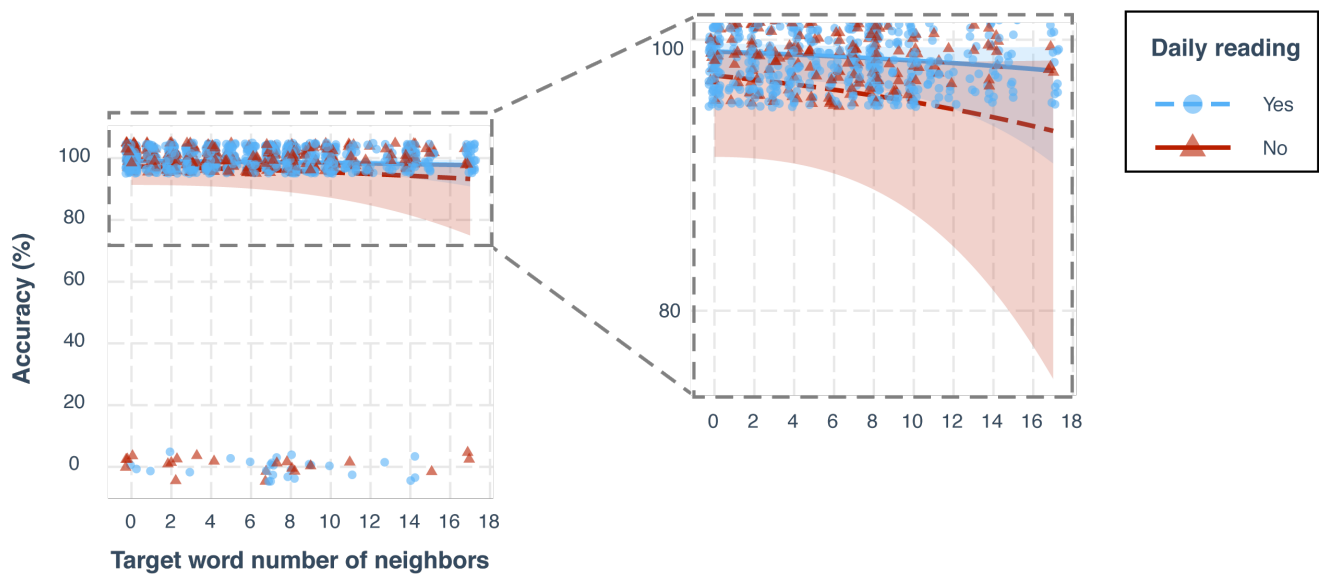


Figure 4: Effect of the neighborhood size (N) on word reading accuracy.

Each data point represents a target word. Raw data points and fitted curves estimated by the GLME model are grouped according to reading proficiency: blue for participants reading daily, red for participants who quit daily reading activities. The right side panel shows a zoomed view of the left plot between 70 and 100% accuracy.

Analysis 2 – Effect of neighborhood size on reading time

In this first LME model (Table 4), the respective effects of neighborhood size, word predictability and reading proficiency are estimated individually, without any interaction term, to test our Hypothesis 1. According to this simple model, words with zero neighbors were read on average in 2.3 seconds ($\exp(0.841)$). Increasing the number of neighbors by 1 did increase reading time significantly, but moderately, by a factor of 1.01 ($\exp(0.013)$; $t = 2.507$, $p = 0.013$, $95\%CI = [0.003; 0.023]$; Figure 5). In other words, increasing neighborhood size from 0 to 6 (the mean value in our pool of target words), increases reading time by a factor of 1.08 ($\exp(0.013)^6$), i.e. an 8% increase. Similarly, increasing neighborhood size from 0 to 10 (where most of our values lie), increases reading time by a factor of 1.14 ($\exp(0.013)^{10}$), i.e. a 14%

increase. Word predictability (expressed as trigram occurrence) also showed a significant effect on reading time ($t = -4.129$, $p < 0.001$, $[-0.17; -0.06]$). Age, acuity and type of field loss (which were dropped from the final model) showed no significant effect on reading time.

	Estimate	Standard Error	t-value	p-value	95% Confidence Interval
Intercept	0.841	0.143	5.855	<0.001	[0.55; 1.13]
Word neighborhood size (N)	0.013	0.005	2.507	0.013	[0.003; 0.023]
Word frequency (ln)	-0.047	0.013	-3.419	<0.001	[-0.07; -0.021]
Word length	0.016	0.030	0.546	0.589	[-0.04; 0.08]
Trigram occurrence	-0.115	0.027	-4.129	<0.001	[-0.17; -0.06]
Daily reading <i>No</i>	0.392	0.217	1.809	0.087	[-0.09; 0.87]

350

351 **Table 4: Fixed-effects estimates from the simple LME model (Analysis 2).**

352 **The dependent variable is log-transformed target word total reading time. The intercept estimate**
353 **represents the log-transformed reading time when all factors included in the model are at their**
354 **reference level (categorical variable) or at 0 (continuous variables). Reference level for the binary**
355 **factor "Daily reading" is 'yes'. Factors showing a significant effect on reading time are in bold**
356 **font and highlighted in grey.**

357

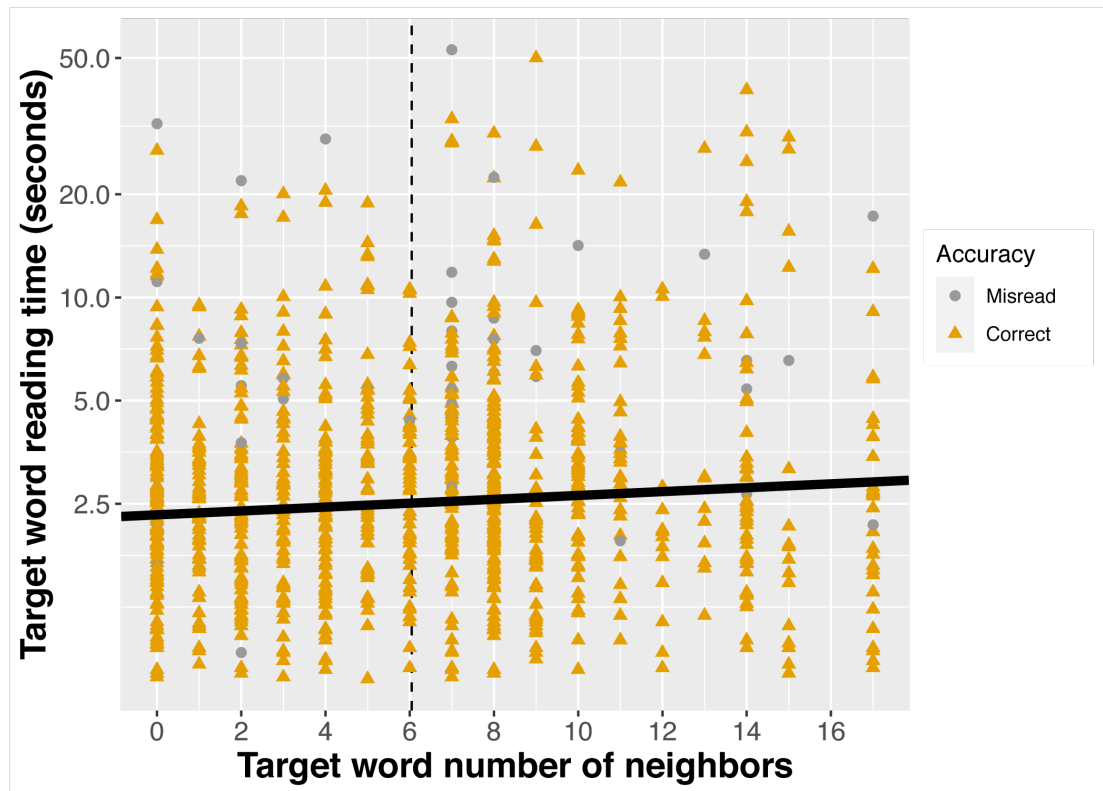


Figure 5: Effect of neighborhood size (N) on word reading time.

Data for both well-read words (yellow triangles) and misread words (grey circles) are plotted but the fitted line extracted from the LME model (solid black) only took into account the words correctly read. The black dotted line marks N mean value.

Analysis 3 – Effect of the interaction between neighborhood size, word predictability and reading proficiency on reading time

In this second LME model (Table 5), a 3-way interaction between neighborhood size, word predictability and reading proficiency was added to test our Hypotheses 2 and 3. According to this complex model, when trigram occurrence is at 0 (implying a highly infrequent trigram and low predictability; Figure 6A), words with zero neighbors were read on average in 3.0 seconds ($\exp(1.099)$) by patients who practice reading daily (Figure 6A – blue dashed line). For this same group of readers, increasing the number of neighbors did not have a significant effect on reading time ($t = -1.043$, $p = 0.298$; 95%CI = $[-0.02; 0.01]$; Figure 6A – blue dashed line). For patients who quit daily

374 reading activities, average reading time of words with zero neighbors was 3.14
375 seconds ($\exp(1.099+0.044)$) and was not significantly different from the ‘daily
376 reading’ group estimate ($t = 0.188$, $p = 0.853$, $95\%CI = [-0.42; 0.52]$; Figure 6A – red
377 solid line). However, for these participants who stopped reading on a daily basis,
378 increasing the number of neighbors by 1 did increase reading time significantly by a
379 factor of 1.07 ($\exp(0.07)$; $t = 5.22$, $p < 0.001$, $95\%CI = [0.04; 0.10]$; Figure 6A – red
380 solid line). In other words, for low predictability, increasing neighborhood size from 0
381 to 6 (the mean value in our pool of target words), increases reading time by a factor of
382 1.52 ($\exp(0.07)^6$), i.e. a 52% increase. Similarly, increasing neighborhood size from 0
383 to 10 (where most of our values lie), increases reading time by a factor of 2.01
384 ($\exp(0.07)^{10}$), i.e. a 101% increase.

385

	Estimate	Standard Error	t-value	p-value	95% Confidence Interval
Intercept	1.099	0.136	8.09	<0.001	[0.84; 1.37]
Word neighborhood size (N)	-0.009	0.008	-1.043	0.298	[-0.02; 0.01]
Word frequency (ln)	-0.046	0.014	-3.39	<0.001	[-0.07; -0.02]
Word length	0.013	0.028	0.48	0.633	[-0.04; 0.07]
Trigram occurrence	-0.162	0.049	-3.24	0.002	[-0.26; -0.07]
Daily reading <i>No</i>	0.044	0.234	0.188	0.853	[-0.42; 0.52]
N : Daily reading <i>No</i>	0.07	0.013	5.22	<0.001	[0.04; 0.10]
Trigram occurrence : Daily reading <i>No</i>	0.093	0.081	1.15	0.248	[-0.06; 0.25]
N : Trigram occurrence : Daily reading <i>Yes</i>	0.011	0.006	1.85	0.066	[-4e-04; 0.02]
N : Trigram occurrence : Daily reading <i>No</i>	-0.017	0.008	-2.03	0.043	[-0.03; -8e-04]

386

Table 5: Fixed-effects estimates from the complex LME model (Analysis 3).

The dependent variable is log-transformed target word total reading time. The intercept estimate represents the log-transformed reading time when all factors included in the model are at their reference level (categorical variable) or at 0 (continuous variable). Reference level for the binary factor "Daily reading" is 'yes'. Interactions are represented by the symbol ":". Factors showing a significant effect on reading time are in bold font and highlighted in grey.

As trigram occurrence increases to an average value (Figure 6B) and a high value (Figure 6C), the effect of neighborhood size remains null for the 'daily reading' group ($t = 1.85$; $p = 0.066$; $95\%CI = [-4e-04; 0.02]$; blue dashed lines). However, for the other group of patients who stopped practicing reading daily (red solid lines), the amplitude of the neighborhood size effect is significantly reduced by a factor of 1.02 ($\exp(0.017)$; $t = -2.03$; $p = 0.043$; $95\%CI = [-0.03; -8e-04]$) every time trigram occurrence increases by one unit. As given by a slopes post-hoc analysis, the amplitude of the effect for the group who quit daily reading (red solid line) was of 1.05 ($\exp(0.05)$; $t = 5.39$, $p < 0.001$) for average trigram occurrence values (Figure 6B) and of 1.03 ($\exp(0.03)$; $t = 2.77$, $p = 0.01$) for highly frequent trigrams (Figure 6C). In other words, for fairly frequent trigrams yielding average predictability, increasing neighborhood size from 0 to 10, increases reading time significantly by a factor of 1.65 ($\exp(0.05)^{10}$), i.e. a 65% increase, while the same increase in neighborhood size for highly frequent trigrams yielding high predictability, increases reading time significantly by a factor of only 1.35 ($\exp(0.03)^{10}$), i.e. a 35% increase.

Besides this significant 3-way interaction, word frequency also had a significant effect on reading time with a regression coefficient estimate of -0.046 ($t = -3.39$, $p < 0.001$, $95\%CI = [-0.07; -0.02]$). As both reading time and frequency are expressed in natural log units, multiplying frequency (in original units) by 10 multiplies reading time (in

original units) by $0.90 (10^{-0.046})$, i.e. a 10% decrease. We found no significant interaction between frequency and the ‘daily reading’ factor, nor between frequency and the number of neighbors. Word length had no significant effect on reading time ($t = 0.48, p = 0.633, 95\%CI = [-0.04; 0.07]$). Similarly, age, acuity and type of field loss (all dropped from the final model) showed no significant effect on reading time.

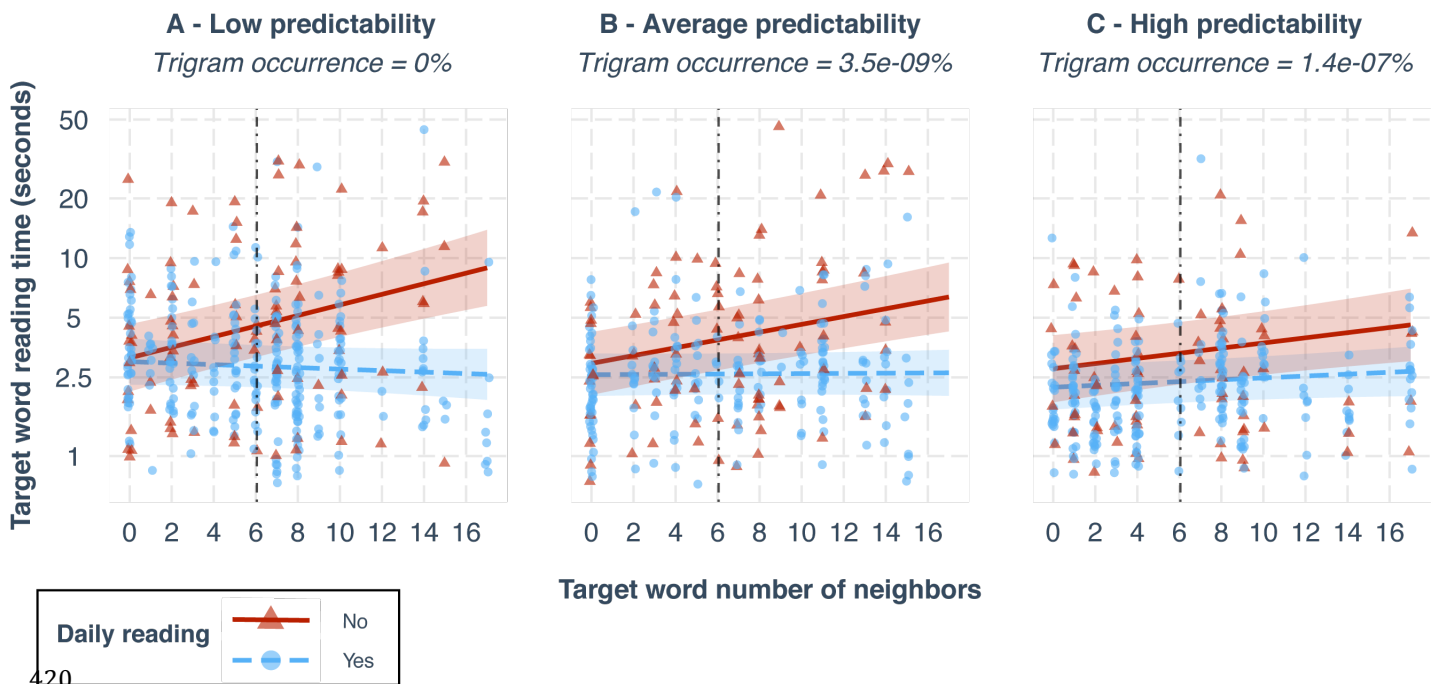


Figure 6: Effect of neighborhood size (N) on reading time, depending on word predictability and reading proficiency.

Raw data points and fitted lines estimated by the LME model are grouped by reading proficiency: red for participants who quit reading on a daily basis, blue for participants still reading daily. Each subplot represents the effect of N for a different value of the trigram occurrence distribution, split into three equal-sized groups (i.e., terciles): (A) median of the lower tercile, (B) median of the middle tercile, (C) median of the upper tercile (C).

DISCUSSION

The first goal of the present work was to test the hypothesis that the visual constraint imposed by the presence of a central scotoma leads to an inhibitory effect of neighborhood size during sentence reading. Therefore, we assessed the effect of word neighborhood size (N) on the reading performance of 19 patients with CFL, namely reading accuracy (Analysis 1) and reading time (Analysis 2). Our results show that N has no significant effect on accuracy, which ceils around 94% overall. On the other hand, we found a moderate inhibitory effect of N on reading time, with a 14% increase in word reading time when N goes from 0 to 10 neighbors (i.e., the range where most of our values lie). This result confirms our first hypothesis and builds up the recent report of a reversed neighborhood size effect for visually impaired individuals compared to normal readers [18].

Effects of orthographic neighbors on word identification have been extensively explored in readers with normal vision. Despite the many contradictory findings accumulated over the years, it is now accepted that the neighborhood size effect depends on the task and is modulated by the frequency of the neighbors themselves (i.e. the neighborhood frequency effect). Indeed, large neighborhood has consistently been reported to facilitate responses in a variety of tasks such as word naming [44] and lexical decision [45,46], but this facilitative effect seems to be restricted to low-frequency neighbors [47]. Despite their great interest to help understand the underlying mechanisms of lexical processing, these results are difficult to interpret in the context of our work with natural reading since they are restrained to isolated word identification.

Because semantic context may help decide between visually similar words, it is necessary to examine the effects of neighborhood during natural reading in context to assess their influence on reading performance. To this end, Pollatsek et al. examined the pattern of eye movements during both a lexical decision task and silent reading when target words varying in neighborhood size were embedded in neutral sentences [48]. Their overall conclusion was that, for silent reading, increasing the number of higher frequency neighbors had a clear inhibitory effect on word identification, whereas increasing the number of lower frequency neighbors may have a weak facilitative effect. In the present work, reading material was created without controlling for neighborhood frequency, but a post-hoc analysis revealed that most of our target words (82%) had a majority of low-frequency neighbors (from 60% to 100%; mean = $83 \pm 14\%$). Based on this distribution, results from normal vision would predict a weak facilitative effect of neighborhood size on reading performance [48]. On the contrary, we found a reverse effect of neighborhood size, with a weak inhibitory effect. This result confirms our assumption that under degraded visual conditions, the lack of complete stimulus information will have more of an effect on words that are visually similar to many others than on words with few neighbors. It is likely that in the interest of time performance, readers may infer a word by guessing one of its high-frequency neighbors. However, because of the incongruousness between this guess and the overall sentence meaning, processing would persist until a better match, that fits both the visually identified letters and the meaning, is found. This would explain why reading accuracy remained very high among our participants, at the expense of reading time.

The second goal of the present work was to test the hypotheses that, with CFL, the effect of neighborhood size is modulated by both word predictability and reading

proficiency. Therefore, we assessed the word neighborhood size effect through a 3-way interaction, including a measure of predictability (trigram occurrence) and proficiency (daily reading - *yes or no*) (Analysis 3). First, we found that the inhibitory effect of N is modulated by word predictability: the more familiar a sequence of words is, the weaker the effect of neighborhood size on the last word identification time. This result confirms our second hypothesis that the amplitude of the neighborhood size effect is influenced by word predictability.

However, we found that this is only true for the less proficient readers, who have stopped reading on a daily basis, confirming our third hypothesis that the interaction between neighborhood size and word predictability depends on patients' reading proficiency. In short, we found that for the less proficient readers reaching a low-predictable word in a sentence, reading speed decreases by up to 50% (101% increase in reading time) when the number of neighbors goes from 0 to 10. As predictability increases, the amplitude of this effect lessens gradually, with 39% decrease in reading speed for average predictability (65% increase in reading time) and 26% decrease in reading speed for high predictability (35% increase in reading time). For proficient readers who reported to retain a daily leisure activity of reading however, even for a few minutes each day, the effect of N remains null, regardless of the word predictability. This result, close to what has been reported with normally sighted readers [48], leads us to the conclusion that practice can help minimize the adverse effect of ambiguity induced by orthographic similarity when visual input is degraded and access to text is only partial because of maculopathy.

These results are particularly relevant in the context of low-vision rehabilitation, as they reinforce the need to provide patients with individualized readaptive care of functional vision, in order to help maintain daily reading practice. More importantly,

our results suggest that text simplification might be a powerful way to leverage text accessibility for low-vision patients. Text simplification is the process of reducing the linguistic complexity of a text, while still retaining the original information and meaning [49,50]. Its main goal is to make a text more accessible to people with low literacy [51] or individuals with reading disorders (e.g., aphasia [52], dyslexia [53]). For the first time, our results show that it could also be used efficiently to improve low-vision readaptation, especially for the most impaired patients, who have stopped reading on a daily basis (36.8% in our population sample). For these less proficient readers, substituting complex words (i.e, words with many orthographic neighbors) with synonyms that have less neighbors and equal or higher frequency should reduce reading difficulty. Therefore, using simplified texts with increased accessibility as rehabilitation training material might help (1) improve overall reading ability and fluency, while (2) fostering the long-term motivation necessary to resume daily reading practice. Text simplification could then be used daily as an efficient reading aid (made available through tablets, e-readers, or web plugins) to keep practicing reading at home and enhance everyday reading performance.

As a side note, we would like to point to the fact that our results were obtained using the occurrence percentage of trigrams (3-gram, i.e., sequence of three words) in the French literature. It is worth mentioning that we also ran the analysis with other n-gram values, namely 2- and 4-gram and that neither of them showed significant effect. Since most of our target words were common nouns (89%; against 9.4% of adjectives and 1.6% of verbs), they were most likely preceded by an article that did not convey meaningful information. Therefore an analysis based on 2-gram prediction was not likely to be meaningful. On the other hand, we expected 4-gram analysis to be highly significant. However, because we created our reading material so that target words

were not too predictable, 77% of our 4-grams were highly infrequent (less than 40 occurrences across the ‘French 2012’ corpus) and rated at 0 percent occurrence by Google Ngram. We suspect that the absence of significant effect with 4-grams is due to this highly skewed distribution towards 0.

Overall, the present work presents some limitations that should be taken into account in future investigations of neighborhood effects on low vision. First, neighborhood frequency should be gauged thoroughly when designing the reading material in order to better control for its effect when assessing the effect of neighborhood size. Second, the definition of orthographic neighbor used in this work is letter-position-specific and length-dependent [15]. Given that letter position uncertainty is a crucial factor limiting peripheral word recognition, and reading without central vision in general [54], Coltheart’s definition should probably be extended to include letter transposition (e.g., trial and trail), addition (e.g. trial and tribal) and deletion (e.g. trial and rial) in order to encompass a larger number of highly similar words. Finally, the results presented here should be interpreted cautiously in the context of reading under natural conditions, since they were obtained with a paradigm that does not allow word skipping, forcing participants to read each single word of a sentence [55].

REFERENCES

1. Brown JC, Goldstein JE, Chan TL, Massof R, Ramulu P, Low Vision Research Network Study Group (2014) Characterizing functional complaints in patients seeking outpatient low-vision services in the United States. *Ophthalmology* 121: 1655-62.e1.
2. Kanonidou E (2011) Reading performance and central field loss. *Hippokratia* 15: 103-8.
3. Chung S (2020) Reading in the presence of macular disease: a mini-review. *Ophthalmic and Physiological Optics*.
4. Murro V, Sodi A, Giacomelli G, Mucciolo DP, Pennino M, Virgili G, et al. (2017) Reading Ability and Quality of Life in Stargardt Disease. *Eur J Ophthalmol* 27: 740-745.
5. Pondorfer SG, Terheyden JH, Heinemann M, Wintergerst MWM, Holz FG, Finger RP (2019) Association of Vision-related Quality of Life with Visual Function in Age-Related Macular Degeneration. *Scientific Reports* 9: 15326.
6. Calabrèse A, Bernard J, Faure G, Hoffart L, Castet E (2016b) Clustering of Eye Fixations: A New Oculomotor Determinant of Reading Speed in Maculopathy. *Invest Ophthalmol Vis Sci* 57: 3192-202.
7. Leroy G, Kauchak D (2014) The effect of word familiarity on actual and perceived text difficulty. *J Am Med Inform Assoc* 21: e169-72.
8. Adelman JS, Brown GDA (2007) Phonographic neighbors, not orthographic neighbors, determine word naming latencies. *Psychonomic Bulletin & Review* 14: 455--459.
9. Taylor DJ, Edwards LA, Binns AM, Crabb DP (2018) Seeing it differently: self-reported description of vision loss in dry age-related macular degeneration. *Ophthalmic Physiol Opt* 38: 98-105.
10. Chung ST (2007) Learning to identify crowded letters: Does it improve reading speed?. *Vision Research* 47.
11. Bullimore M, Bailey I (1995) Reading and eye movements in age related maculopathy. *Optometry and Vision Science*.
12. Fine EM, Peli E (1996) The role of context in reading with central field loss. *Optom Vis Sci* 73: 533-9.

13. Legge GE, Klitz TS, Tjan BS (1997) Mr. Chips: an ideal-observer model of reading. *Psychol Rev* 104: 524-53.
14. Stolowy N, Calabrèse A, Sauvan L, Aguilar C, François T, Gala N, et al. (2019) The influence of word frequency on word reading speed when individuals with macular diseases read text. *Vision Research* 155: 1 - 10.
15. Coltheart M, Davelaar E, Jonasson JE, Besner D (1977) Access to the internal lexicon. In: Dornio S, editor. *Attention and performance VI*. Hillsdale, NJ: Erlbaum: pp. 535--555.
16. Andrews S (1997) The effect of orthographic similarity on lexical retrieval: Resolving neighborhood conflicts. *Psychonomic Bulletin & Review* 4: 439--461.
17. Perea M, Martínez E (2000) The effects of orthographic neighborhood in reading and laboratory word identification tasks. *Psicológica* 21.
18. Sauvan L, Stolowy N, Aguilar C, François T, Gala N, Matonti F, et al. (2020) Text Simplification to Help Individuals With Low Vision to Read More Fluently. Workshop Tools and Resources to Empower People with Reading Difficulties (READI) at International conference on Language Resources and Evaluation (LREC 2020), oral presentation.: 27-32. Marseille, France.
19. Rayner K (1998) Eye movements in reading and information processing: 20 years of research. *Psychol Bull* 124: 372-422.
20. Balota DA, Pollatsek A, Rayner K (1985) The interaction of contextual constraints and parafoveal visual information in reading. *Cogn Psychol* 17: 364-90.
21. Hawelka S, Schuster S, Gagl B, Hutzler F (2015) On forward inferences of fast and slow readers. An eye movement study. *Sci Rep* 5: 8432.
22. Ashby J, Rayner K, Clifton C (2005) Eye movements of highly skilled and average readers: differential effects of frequency and predictability. *Q J Exp Psychol A* 58: 1065-86.
23. Peirce JW (2007) PsychoPy--Psychophysics software in Python. *J Neurosci Methods* 162: 8-13.
24. Peirce JW (2009) Generating stimuli for neuroscience using PsychoPy. *Frontiers in Neuroinformatics* 2: 10.
25. Calabrèse A, Bernard J, Faure G, Hoffart L, Castet E (2014) Eye movements and

reading speed in macular disease: the shrinking perceptual span hypothesis requires
and is supported by a mediation analysis. *Invest Ophthalmol Vis Sci* 55: 3638-45.

26. Calabrèse A, Mansfield JS, Legge GE (2019) mnreadR, an R package to analyze
MNREAD data. version 2.1.3 <https://CRAN.R-project.org/package=mnreadR>.

27. Billami M, François T, Gala N (2018) ReSyf: a French lexicon with ranked
synonyms. In *Proceedings of the 27th Conference on Computational Linguistics*
(COLING 2018), Santa Fe, USA: 2570-2581. <https://cental.uclouvain.be/resyf/>.

28. New B, Ferrand L, Pallier C, Brysbaert M (2006) Reexamining the word length
effect in visual word recognition: new evidence from the English Lexicon Project.
Psychon Bull Rev 13: 45-52.

29. Just MA, Carpenter PA (1980) A theory of reading: from eye fixations to
comprehension. *Psychol Rev* 87: 329-54.

30. Aaronson D, Scarborough HS (1976) Performance theories for sentence coding:
Some quantitative evidence. *Journal of Experimental Psychology: Human Perception*
and Performance 2: 56-70.

31. Mitchell DC, Green DW (1978) The effects of context and content on immediate
processing in reading. *Q. J. Exp. Psychol.* 30: 609-636.

32. Just MA, Carpenter PA, Woolley JD (1982) Paradigms and processes in reading
comprehension. *J Exp Psychol Gen* 111: 228-38.

33. Wallis S, Yang Y, Anderson SJ (2018) Word Mode: a crowding-free reading
protocol for individuals with macular disease. *Sci Rep* 8: 1241.

34. Michel J, Shen YK, Aiden AP, Veres A, Gray MK, Google Books Team, et al.
(2011) Quantitative analysis of culture using millions of digitized books. *Science* 331:
176-82.

35. R Core Team (2018) R: A Language and Environment for Statistical Computing.
Vienna, Austria: R Foundation for Statistical Computing. , [https://www.R-](https://www.R-project.org/)
[project.org/](https://www.R-project.org/).

36. Bolker BM, Brooks ME, Clark CJ, Geange SW, Poulsen JR, Stevens MH, et al.
(2009) Generalized linear mixed models: a practical guide for ecology and evolution.
Trends Ecol Evol 24 (3): 127-135.

37. Cheng J, Edwards LJ, Maldonado-Molina MM, Komro KA, Muller KE (2010)
Real longitudinal data analysis for real people: building a good enough mixed model.

- Stat Med 29: 504-20.
38. Tabachnick BG, Fidell LS, Ullman JB (2007) Using multivariate statistics. Pearson Boston, MA, .
 39. Howell DC (2009) Statistical methods for psychology. Cengage Learning, .
 40. Zuur AF, Ieno EN, Elphick CS (2010) A protocol for data exploration to avoid common statistical problems. *Methods in Ecology and Evolution* 1: 3-14.
 41. Baayen RH, Davidson DJ, Bates DM (2008) Mixed-effects modeling with crossed random effects for subjects and items. *Journal of Memory and Language* 59: 390-412.
 42. Gelman A, Hill J (2007) Data analysis using regression and multilevel/hierarchical models. Cambridge University Press, New York.
 43. Bates D, Mächler M, Bolker B, Walker S (2015) Fitting Linear Mixed-Effects Models Using lme4. *Journal of Statistical Software* 67: 1--48.
 44. Andrews S (1989) Frequency and neighborhood effects on lexical access: Activation or search? *Journal of Experimental Psychology: Learning, Memory, and Cognition* 15: 802--814.
 45. Sears CR, Hino Y, Lupker SJ (1995) Neighborhood size and neighborhood frequency effects in word recognition. *Journal of Experimental Psychology: Human Perception and Performance* 21: 876-900.
 46. Forster KI, Shen D (1996) No enemies in the neighborhood: absence of inhibitory neighborhood effects in lexical decision and semantic categorization.. *J Exp Psychol Learn Mem Cogn* 22: 696--713.
 47. Carreiras M, Perea M, Grainger J (1997) Effects of orthographic neighborhood in visual word recognition: cross-task comparisons.. *J Exp Psychol Learn Mem Cogn* 23: 857--871.
 48. Pollatsek A, Perea M, Binder KS (1999) The effects of "neighborhood size" in reading and lexical decision. *J Exp Psychol Hum Percept Perform* 25: 1142-58.
 49. Siddharthan A (2014) A survey of research on text simplification. *Int. J. Appl. Linguist.* 165: 259-298.
 50. Saggion H (2017) Automatic Text Simplification. *Synthesis Lectures on Human Language Technologies* 10: 1-137.

54. Bernard J, Castet E (2019) The optimal use of non-optimal letter information in foveal and parafoveal word recognition. *Vision Res* 155: 44-61.

55. Albregues C, Lavigne F, Aguilar C, Castet E, Vitu F (2019) Linguistic processes do not beat visuo-motor constraints, but they modulate where the eyes move regardless of word boundaries: Evidence against top-down word-based eye-movement control during reading. *PLOS ONE* 14: 1-47.

ACKNOWLEDGEMENTS

This work was supported by the Fondation de France and by the Belgian FNRS.

AUTHOR CONTRIBUTIONS

LS, TF and NG prepared the linguistic material used for data collection. CA developed the program used for data collection. LS and NS collected the data. AC performed the data analysis and wrote the main manuscript text. All authors reviewed the manuscript.

FIGURE LEGENDS

Figure 1: The presence of a central scotoma occludes part of the word “father”,
leading to possible misidentifications (e.g., farmer, feather, halter) and a greater need
for linguistic inference

Figure 2: Creation of the reading material.

Illustration of the reading material creation, using the synonym pair “*shore / coast*”.
Both words in this example contain 5 characters. Their difference in number of
neighbors is 10. Sentences A and B were created so either word of this synonym pair
can fit in both sentences. In Condition 1, sentence A contains the target word 1
(‘shore’) and sentence B contains the target word 2 (‘coast’). In Condition 2, the
pairing is reversed. Note that this example is given in English to ease understanding.
See Supplementary Material for the complete set of French sentences created.

Figure 3: Self-paced Reading paradigm.

Words are revealed one at a time by the participant, using keyboard presses. A press
on the right arrow key will unmask the upcoming word (while masking the currently
visible word) and a press on the left arrow key will unmask the previous word (while
masking the currently visible word). For words unmasked only once (e.g. word 1), the
total reading time equals the 1st-pass reading time. For words unmasked more than
once (e.g. word 2), the total reading time is the sum of each individual reading time
pass.

Figure 4: Effect of the neighborhood size (N) on word reading accuracy.

Each data point represents a target word. Raw data points and fitted curves estimated by the GLME model are grouped according to reading proficiency: blue for participants reading daily, red for participants who quit daily reading activities. The right side panel shows a zoomed view of the left plot between 70 and 100% accuracy.

Figure 5: Effect of neighborhood size (N) on word reading time.

Data for both well-read words (yellow triangles) and misread words (grey circles) are plotted but the fitted line extracted from the LME model (solid black) only took into account the words correctly read. The black dotted line marks N mean value.

Figure 6: Effect of neighborhood size (N) on reading time, depending on word predictability and reading proficiency.

Raw data points and fitted lines estimated by the LME model are grouped by reading proficiency: red for participants who quit reading on a daily basis, blue for participants still reading daily. Each subplot represents the effect of N for a different value of the trigram occurrence distribution, split into three equal-sized groups (i.e., terciles): (A) median of the lower tercile, (B) median of the middle tercile, (C) median of the upper tercile (C).

TABLES

Participants	Gender	Age (years)	Etiology	Disease onset (years)	Low-vision rehabilitation	Visual acuity (logMAR)	Lens status	Daily reading time (min/day)
1	M	76	Atrophic AMD	2	Yes	1	Phakic	0
2	F	77	Atrophic AMD	7	No	0.4	Pseudophakic	45
3	F	80	Atrophic AMD	7	Yes	1	Pseudophakic	0
4	F	80	Atrophic AMD	5	Yes	0.8	Phakic	0
5	F	83	Atrophic AMD	12	Yes	0.5	Phakic	60
6	F	83	Atrophic AMD	2	Yes	0.5	Pseudophakic	0
7	F	85	Atrophic AMD	15	No	0.7	Pseudophakic	60
8	M	86	Atrophic AMD	8	Yes	0.7	Pseudophakic	60
9	M	88	Atrophic AMD	20	Yes	0.7	Phakic	60
10	F	78	Exudative AMD	3	No	1.1	Pseudophakic	0
11	F	87	Exudative AMD	2	Yes	0.5	Pseudophakic	10
12	M	89	Exudative AMD	3	Yes	0.4	Pseudophakic	30
13	F	48	Stargardt's disease	35	Yes	1.3	Phakic	25
14	F	72	Stargardt's disease	16	No	1	Phakic	120
15	F	32	Cone dystrophy	30	No	1	Phakic	120
16	M	73	Diabetic retinopathy	10	No	0.7	Pseudophakic	0
17	M	59	Myopic retinopathy	15	Yes	1	Phakic	0
18	F	70	Myopic retinopathy	20	Yes	1.3	Pseudophakic	120
19	F	70	Myopic retinopathy	70	Yes	0.8	Pseudophakic	30

Table 1: Participants' demographic, visual and reading characteristics.

Visual acuity and lens status are given for the tested eye only. Participants with central scotoma only are highlighted in red. Participants with central scotoma and peripheral lesions are highlighted in blue.

801

Variable name	Unit / Transformation	Centered	Description
Target word characteristics			
Neighborhood size (N)	--	--	Number of neighbors
Frequency (ln)	Natural log	Yes	Occurrences/million
Length	--	Yes	Number of characters
Sentence characteristics			
Trigram occurrence	Ordered quantile normalization	--	Percentage of occurrence for each trigram ending with a target word
Participant's individual characteristics			
Age	Years	--	--
Visual Acuity	LogMAR	--	--
Type of field loss	<ul style="list-style-type: none"> • Central only • Central + peripheral 	--	--
Still reading daily	<ul style="list-style-type: none"> • Yes • No 	--	--

802

803 **Table 2: Description of the different factors included as independent variables in the linear**

804 **mixed-effects models.**

805

	Estimate	Standard Error	z-value	p-value	95% Confidence Interval
Intercept	4.716	0.613	7.694	<0.001	[3.65; 6.17]
Word neighborhood size (N)	-0.058	0.054	-1.069	0.285	[-0.17; 0.05]
Word frequency (ln)	0.147	0.147	1.003	0.316	[-0.15; 0.46]
Word length	-0.028	0.213	-0.13	0.897	[-0.47; 0.41]
Trigram occurrence	0.361	0.292	1.236	0.216	[-0.21; 0.98]
Daily reading <i>No</i>	-1.126	0.545	-2.064	0.039	[-2.31; -0.03]

807

808 **Table 3: Fixed-effects estimates from the GLME model (Analysis 1).**

809 The dependent variable is ‘Target word reading accuracy’. The intercept estimate is the
810 predicted value of the dependent variable when all independent variables are at 0 (continuous
811 variables) or at their reference level (categorical variable). Reference level for the binary factor
812 ”Daily reading” (representing reading proficiency) is ‘yes’. Factors showing a significant effect
813 on reading accuracy are in bold font and highlighted in grey.

814

	Estimate	Standard Error	t-value	p-value	95% Confidence Interval
Intercept	0.841	0.143	5.855	<0.001	[0.55; 1.13]
Word neighborhood size (N)	0.013	0.005	2.507	0.013	[0.003; 0.023]
Word frequency (ln)	-0.047	0.013	-3.419	<0.001	[-0.07; -0.021]
Word length	0.016	0.030	0.546	0.589	[-0.04; 0.08]
Trigram occurrence	-0.115	0.027	-4.129	<0.001	[-0.17; -0.06]
Daily reading <i>No</i>	0.392	0.217	1.809	0.087	[-0.09; 0.87]

816

817 **Table 4: Fixed-effects estimates from the simple LME model (Analysis 2).**

818 The dependent variable is log-transformed target word total reading time. The intercept estimate
819 represents the log-transformed reading time when all factors included in the model are at their
820 reference level (categorical variable) or at 0 (continuous variables). Reference level for the binary
821 factor "Daily reading" is 'yes'. Factors showing a significant effect on reading time are in bold
822 font and highlighted in grey.

	Estimate	Standard Error	t-value	p-value	95% Confidence Interval
Intercept	1.099	0.136	8.09	<0.001	[0.84; 1.37]
Word neighborhood size (N)	-0.009	0.008	-1.043	0.298	[-0.02; 0.01]
Word frequency (ln)	-0.046	0.014	-3.39	<0.001	[-0.07; -0.02]
Word length	0.013	0.028	0.48	0.633	[-0.04; 0.07]
Trigram occurrence	-0.162	0.049	-3.24	0.002	[-0.26; -0.07]
Daily reading <i>No</i>	0.044	0.234	0.188	0.853	[-0.42; 0.52]
N : Daily reading <i>No</i>	0.07	0.013	5.22	<0.001	[0.04; 0.10]
Trigram occurrence : Daily reading <i>No</i>	0.093	0.081	1.15	0.248	[-0.06; 0.25]
N : Trigram occurrence : Daily reading <i>Yes</i>	0.011	0.006	1.85	0.066	[-4e-04; 0.02]
N : Trigram occurrence : Daily reading <i>No</i>	-0.017	0.008	-2.03	0.043	[-0.03; -8e-04]

823

824 **Table 5: Fixed-effects estimates from the complex LME model (Analysis 3).**

825 **The dependent variable is log-transformed target word total reading time. The intercept estimate**
826 **represents the log-transformed reading time when all factors included in the model are at their**
827 **reference level (categorical variable) or at 0 (continuous variable). Reference level for the binary**
828 **factor "Daily reading" is 'yes'. Interactions are represented by the symbol ":". Factors showing a**
829 **significant effect on reading time are in bold font and highlighted in grey.**

830 SUPPLEMENTARY MATERIAL

831

832 Mon ami nous parlait de son **métier (boulot)** passionnant

833 Il ne s'ennuyait pas car c'était un **boulot (métier)** prenant

834 Il était aimé de tous, c'était le **chef (boss)** de l'usine

835 Antoine a toujours voulu être le **boss (chef)** du groupe

836 Je suis resté bloqué car le **loquet (verrou)** ne s'ouvrait plus

837 Si j'étais toi je ferais installer un **verrou (loquet)** sur la porte

838 Tu devrais aller faire une **marche (balade)** pour te détendre

839 Nous avons aimé cette belle **balade (marche)** dans les bois

840 La semaine prochaine il faudra faire un **arrêt (halte)** chez mamie

841 En rentrant nous avons fait une **halte (arrêt)** à la boulangerie

842 Il a finalement réussi à trouver une **faille (brèche)** dans le système

843 Ils sont entrés par une petite **brèche (faille)** à travers le mur

844 On marchait dans de la **boue (vase)** c'était désagréable

845 Il fallait traverser de la **vase (boue)** pour y accéder

846 Elle a longtemps travaillé avec un autre **type (gars)** du bureau

847 Chaque samedi il vendait des poulets avec un **gars (type)** du village

848 Avec sa voiture décapotable il aime **frimer (crâner)** en ville

849 Elle est toujours en train de **crâner (frimer)** avec sa robe

850 Ne me dis pas que le chien a encore mangé ma **godasse (soulier)** en cuir

851 Ce matin en rangeant j'ai trouvé mon **soulier (godasse)** sous le lit

852 Tu devrais aller te mettre au **repos (calme)** dans la chambre

853 Ça m'a fait du bien ce séjour au **calme (repos)** chez ma mère

854 Il a travaillé de longues années pour devenir un **expert (savant)** réputé

855 Je lui ai demandé son avis car c'est un **savant (expert)** dans ce domaine

856 Nous pensons qu'il s'agit d'un **germe (virus)** plutôt agressif

857 Elle n'est pas sortie car elle avait un **virus (germe)** dangereux

858 Faites attention, vous devez marcher sur le **bord (côté)** de la route

859 Les enfants se mettaient sur le **côté (bord)** pour laisser passer

860 J'étais la seule déguisée hier soir, c'était **marrant (amusant)** mais gênant

861 Ils se sont revus par hasard, c'est **amusant (marrant)** cette coïncidence

862 Ce serait gentil de vous mettre bien au **centre (milieu)** de l'écran

863 Il tira de toutes ses forces depuis le **milieu (centre)** du terrain

864 Tous les vendredis midi je vais au **bar (pub)** du village

865 La semaine dernière il m'a invitée au **pub (bar)** du coin

866 Si tu vas jusqu'à la falaise tu vois une **baie (anse)** sublime en bas

867 J'aimais marcher jusqu'à cette **anse (baie)** à l'abri des touristes

868 Au musée nous avons vu un ancien **char (tank)** très abîmé

869 On nous a laissé grimper dans un **tank (char)** de l'époque

870 Au milieu de la cour il y avait une **botte (gerbe)** de blé

871 Pour la décoration je mettrai une **gerbe (botte)** de fleurs

872 Elle portait toujours un **large (grand)** manteau en hiver

873 Devant la maison il y avait un **grand (large)** patio
874 Avec le brouillard ils n'ont pas vu la **jetée (digue)** devant eux
875 Chaque dimanche il marchait jusqu'à la **digue (jetée)** et revenait
876 Mon frère ne travaille pas, c'est un **feignant (flemmard)** depuis toujours
877 Il ne fallait pas se plaindre ni être un **flemmard (feignant)** pour réussir
878 Le patron n'a pas pu obtenir un **délai (durée)** acceptable
879 Ils peuvent me rembourser avec une **durée (délai)** convenable
880 Il a freiné d'un coup pour éviter le **bus (car)** qui passait
881 Je l'ai rencontré dans le **car (bus)** la semaine dernière
882 Pour valider ce certificat il faut le **cachet (tampon)** du médecin
883 Vous êtes sensé mettre un **tampon (cachet)** sur ces documents
884 Ça me brûlait depuis trois jours, j'avais une **saleté (crasse)** dans l'œil
885 Lorsque nous sommes entrés, il y avait de la **crasse (saleté)** partout
886 Je te préviens car cet objet est **cassant (fragile)** et j'y tiens
887 Je l'ai hérité de ma mère il est **fragile (cassant)** mais très utile
888 Je souhaite refaire ma cuisine avec cette **nuance (teinte)** de bleu
889 On distingue sur tous ses tableaux une **teinte (nuance)** particulière
890 Ils ont passé la journée dans la même **salle (pièce)** sans se parler
891 Pouvez-vous déposer ces affaires dans la **pièce (salle)** du fond
892 Pierre est énervant, il est **avare (radin)** comme son père
893 Il devenait de plus en plus **radin (avare)** avec le temps
894 Olivier a fait refaire sa cuisine et il est **content (heureux)** du résultat
895 Il l'a trouvé sur une brocante, il était **heureux (content)** de sa trouvaille
896
897
898
899
900
901
902
903