



**HAL**  
open science

# Stable broken $H(\text{curl})$ polynomial extensions and $p$ -robust quasi-equilibrated a posteriori estimators for Maxwell's equations

Théophile Chaumont-Frelet, Alexandre Ern, Martin Vohralík

► **To cite this version:**

Théophile Chaumont-Frelet, Alexandre Ern, Martin Vohralík. Stable broken  $H(\text{curl})$  polynomial extensions and  $p$ -robust quasi-equilibrated a posteriori estimators for Maxwell's equations. 2020. hal-02644173v1

**HAL Id: hal-02644173**

**<https://inria.hal.science/hal-02644173v1>**

Preprint submitted on 28 May 2020 (v1), last revised 3 May 2021 (v2)

**HAL** is a multi-disciplinary open access archive for the deposit and dissemination of scientific research documents, whether they are published or not. The documents may come from teaching and research institutions in France or abroad, or from public or private research centers.

L'archive ouverte pluridisciplinaire **HAL**, est destinée au dépôt et à la diffusion de documents scientifiques de niveau recherche, publiés ou non, émanant des établissements d'enseignement et de recherche français ou étrangers, des laboratoires publics ou privés.

# STABLE BROKEN $\mathbf{H}(\text{curl})$ POLYNOMIAL EXTENSIONS AND $p$ -ROBUST QUASI-EQUILIBRATED A POSTERIORI ESTIMATORS FOR MAXWELL'S EQUATIONS\*

T. CHAUMONT-FRELET<sup>1,2</sup>, A. ERN<sup>3,4</sup>, AND M. VOHRALÍK<sup>4,3</sup>

ABSTRACT. We study extensions of piecewise polynomial data prescribed in a patch of tetrahedra sharing an edge. We show stability in the sense that the minimizers over piecewise polynomial spaces with prescribed tangential component jumps across faces and prescribed piecewise curl in elements are subordinate in the broken energy norm to the minimizers over the broken  $\mathbf{H}(\text{curl})$  space with the same prescriptions. Our proofs are constructive and yield constants independent of the polynomial degree. We then detail the application of this result to a posteriori error analysis of Maxwell's equations discretized with Nédélec's finite elements of arbitrary order. The resulting estimators are locally efficient, polynomial-degree-robust, and inexpensive since the quasi-equilibration only goes over edge patches and can be realized without solutions of patch problems by a sweep through tetrahedra around every mesh edge. The estimators become guaranteed when the regularity pick-up constant is explicitly known. Numerical experiments illustrate the theoretical findings.

KEY WORDS. A posteriori error estimates; Finite element methods; Maxwell's equations; High order methods.

AMS SUBJECT CLASSIFICATION. 65N30; 78M10; 65N15.

## 1. INTRODUCTION

The so-called Nédélec or also edge element spaces of [35] form, on meshes consisting of tetrahedra, the most natural piecewise polynomial subspace of the space  $\mathbf{H}(\mathbf{curl})$  composed of square-integrable fields with square-integrable weak curl. They are instrumental in numerous applications in link with electromagnetism and Maxwell's equations, see for example [1, 4, 33]. The goal of this paper is to study two different but connected questions related to these spaces.

**1.1. Stable broken  $\mathbf{H}(\text{curl})$  polynomial extensions.** Polynomial extension operators are an essential tool in numerical analysis involving Nédélec's spaces, in particular in the case of high-order discretizations. Let  $K$  be a tetrahedron. Then, given a boundary datum in the form of a suitable polynomial on each face of  $K$ , satisfying some compatibility

---

\*This project has received funding from the European Research Council (ERC) under the European Union's Horizon 2020 research and innovation program (grant agreement No 647134 GATIPOR).

<sup>1</sup>Inria, 2004 Route des Lucioles, 06902 Valbonne, France

<sup>2</sup>Laboratoire J.A. Dieudonné, Parc Valrose, 28 Avenue Valrose, 06108 Nice Cedex 02, 06000 Nice, France

<sup>3</sup>Université Paris-Est, CERMICS (ENPC), 6 et 8 av. Blaise Pascal 77455 Marne la Vallée cedex 2, France

<sup>4</sup>Inria, 2 rue Simone Iff, 75589 Paris, France

conditions, a *polynomial extension* operator constructs a curl-free polynomial in the interior of the tetrahedron  $K$  whose tangential trace fits the *boundary datum* and which is stable with respect to the datum in the intrinsic norm. Such an operator was derived in [16], as a part of equivalent developments in the  $H^1$  and  $\mathbf{H}(\text{div})$  spaces respectively in [15] and [17], see also [34] and the references therein. An important achievement extending in a similar stable way a given polynomial *volume datum* to a polynomial with curl given by this datum in a single simplex, along with a similar result in the  $H^1$  and  $\mathbf{H}(\text{div})$  settings, was presented in [10].

The above results were then combined together and extended from a single simplex to a patch of simplices sharing the given vertex in several cases: in  $\mathbf{H}(\text{div})$  in two space dimensions in [5] and in  $H^1$  and  $\mathbf{H}(\text{div})$  in three space dimensions in [25]. These results have important applications to a posteriori analysis but also to localization and optimal  $hp$  estimates in a priori analysis, see [21]. To the best of our knowledge, a similar patch-wise result in the  $\mathbf{H}(\text{curl})$  setting is not available yet, and it is our goal to establish it here. We achieve it in our first main result, Theorem 3.1, see also the equivalent form in Proposition 6.6.

Let  $\mathcal{T}^e$  be a patch of tetrahedra sharing a given edge  $e$  from a shape-regular mesh  $\mathcal{T}_h$  and let  $\omega_e$  be the corresponding patch subdomain. Let  $p \geq 0$  be a polynomial degree. Let two piecewise polynomial functions  $\mathbf{j}_p$  and  $\boldsymbol{\chi}_p$  belonging respectively to the Raviart–Thomas  $(\mathcal{RT}_p(\mathcal{T}^e) \cap \mathbf{H}(\text{div}, \omega_e))$  and the broken Nédélec  $(\mathcal{N}_p(\mathcal{T}^e))$  spaces of order  $p$  associated with  $\mathcal{T}^e$  be given. In this contribution, we establish that

$$(1.1) \quad \min_{\substack{\mathbf{v}_p \in \mathcal{N}_p(\mathcal{T}^e) \cap \mathbf{H}(\text{curl}, \omega_e) \\ \nabla \times \mathbf{v}_p = \mathbf{j}_p}} \|\boldsymbol{\chi}_p - \mathbf{v}_p\|_{\omega_e} \leq C \min_{\substack{\mathbf{v} \in \mathbf{H}(\text{curl}, \omega_e) \\ \nabla \times \mathbf{v} = \mathbf{j}_p}} \|\boldsymbol{\chi}_p - \mathbf{v}\|_{\omega_e},$$

which means that the *discrete* constrained *best-approximation error* in the patch is subordinate to the *continuous* constrained best-approximation error up to a constant  $C$ . Importantly,  $C$  only depends on the shape-regularity of the edge patch and does *not depend* on the *polynomial degree*  $p$  under consideration. Our proofs are constructive, which has a particular application in a posteriori analysis, as we discuss now.

### 1.2. $p$ -robust quasi-equilibrated a posteriori estimators for Maxwell's equations.

Let  $\Omega \subset \mathbb{R}^3$  be a Lipschitz, simply connected, polyhedral domain with unit outward normal  $\mathbf{n}$ . Let  $\Gamma_D, \Gamma_N$  be two disjoint, open, possibly empty subsets of  $\partial\Omega$  such that  $\partial\Omega = \Gamma_D \cup \Gamma_N$ . Given a divergence-free field  $\mathbf{j} : \Omega \rightarrow \mathbb{R}^3$ , Maxwell's equations amount to seeking a field  $\mathbf{E} : \Omega \rightarrow \mathbb{R}^3$  satisfying

$$(1.2a) \quad \nabla \times \nabla \times \mathbf{E} = \mathbf{j}, \quad \nabla \cdot \mathbf{E} = 0, \quad \text{in } \Omega,$$

$$(1.2b) \quad \mathbf{E} \times \mathbf{n} = \mathbf{0}, \quad \text{on } \Gamma_D,$$

$$(1.2c) \quad \nabla \times \mathbf{E} \times \mathbf{n} = \mathbf{0}, \quad \mathbf{E} \cdot \mathbf{n} = 0, \quad \text{on } \Gamma_N.$$

Notice that  $\mathbf{E} \times \mathbf{n} = \mathbf{0}$  implies that  $\nabla \times \mathbf{E} \cdot \mathbf{n} = 0$  on  $\Gamma_D$ .

In the rest of the introduction, assume for simplicity that  $\Gamma_D = \partial\Omega$  (so that the boundary conditions reduce to  $\mathbf{E} \times \mathbf{n} = \mathbf{0}$  on  $\partial\Omega$ ) and that  $\mathbf{j}$  is a piecewise polynomial in the Raviart–Thomas space,  $\mathbf{j} \in \mathcal{RT}_p(\mathcal{T}_h) \cap \mathbf{H}(\text{div}, \Omega)$ ,  $p \geq 0$ . Let  $\mathbf{E}_h \in \mathcal{N}_p(\mathcal{T}_h) \cap \mathbf{H}_0(\text{curl}, \Omega)$  be a

numerical approximation to  $\mathbf{E}$  in the Nédélec space. Then the Prager–Synge equality [38], cf., e.g., [40, equation (3.4)] or [6, Theorem 10], implies that

$$(1.3) \quad \|\nabla \times (\mathbf{E} - \mathbf{E}_h)\|_{\Omega} \leq \min_{\substack{\mathbf{h}_h \in \mathcal{N}_p(\mathcal{T}_h) \cap \mathbf{H}(\mathbf{curl}, \Omega) \\ \nabla \times \mathbf{h}_h = \mathbf{j}}} \|\mathbf{h}_h - \nabla \times \mathbf{E}_h\|_{\Omega}.$$

Bounds such as (1.3) have been used in, e.g., [11, 12, 30, 36], see also the references therein.

The estimate (1.3) leads to a guaranteed and sharp bound. Unfortunately, as written, it involves a global minimization over  $\mathcal{N}_p(\mathcal{T}_h) \cap \mathbf{H}(\mathbf{curl}, \Omega)$ , and is consequently too expensive in practical computations. Of course a further upper bound follows from (1.3) for *any*  $\mathbf{h}_h \in \mathcal{N}_p(\mathcal{T}_h) \cap \mathbf{H}(\mathbf{curl}, \Omega)$  such that  $\nabla \times \mathbf{h}_h = \mathbf{j}$ . At this stage, though, it is not clear how to find an *inexpensive local* way of constructing a suitable field  $\mathbf{h}_h$ , called an *equilibrated flux*. A proposition for the lowest degree  $p = 0$  was given [6], but suggestions for higher-order cases were not available until very recently in [27, 31]. In particular, the authors in [27] also prove efficiency, i.e., they devise a field  $\mathbf{h}_h^* \in \mathcal{N}_p(\mathcal{T}_h) \cap \mathbf{H}(\mathbf{curl}, \Omega)$  such that, up to a generic constant  $C$  independent of the mesh size  $h$  but possibly depending on the polynomial degree  $p$ ,

$$(1.4) \quad \|\mathbf{h}_h^* - \nabla \times \mathbf{E}_h\|_{\Omega} \leq C \|\nabla \times (\mathbf{E} - \mathbf{E}_h)\|_{\Omega},$$

as well as a local version of (1.4). Numerical experiments in [27] reveal very good effectivity indices, also for high polynomial degrees.

A number of a posteriori error estimates that are *polynomial-degree robust*, i.e., where no generic constant depends on  $p$ , were obtained recently. For equilibrations (reconstructions) in the  $\mathbf{H}(\mathbf{div})$  setting in two space dimensions, they were first obtained in [5]. Later, they were extended to the  $H^1$  setting in two space dimensions in [24] and to both  $H^1$  and  $\mathbf{H}(\mathbf{div})$  settings in three space dimensions in [25]. Applications to problems with arbitrarily jumping diffusion coefficients, second-order eigenvalue problems, the Stokes problem, linear elasticity, or the heat equation are reviewed in [25]. In the  $\mathbf{H}(\mathbf{curl})$  setting, with application to the Maxwell’s equations (1.2), however, to the best of our knowledge, such a result was missing<sup>1</sup>. It is our goal to establish it here, and we do so in our second main result, Theorem 3.2.

Our upper bound in Theorem 3.2 actually does *not derive* from the Prager–Synge equality to take the form (1.3), since we do not construct an equilibrated flux  $\mathbf{h}_h^* \in \mathcal{N}_p(\mathcal{T}_h) \cap \mathbf{H}(\mathbf{curl}, \Omega)$ . We instead perform a *quasi-equilibration* producing locally on each edge patch  $\mathcal{T}^e$  a piecewise polynomial  $\mathbf{h}_h^e \in \mathcal{N}_p(\mathcal{T}^e) \cap \mathbf{H}(\mathbf{curl}, \omega_e)$  such that  $\nabla \times \mathbf{h}_h^e = \mathbf{j}$ . Consequently, our estimate rather takes the form

$$(1.5) \quad \|\nabla \times (\mathbf{E} - \mathbf{E}_h)\|_{\Omega} \leq \sqrt{6} C_L C_{\text{cont}} \left( \sum_{e \in \mathcal{E}_h} \|\mathbf{h}_h^e - \nabla \times \mathbf{E}_h\|_{\omega_e}^2 \right)^{1/2},$$

We obtain each  $\mathbf{h}_h^e$  in a single-stage procedure, in contrast to the three-stage procedure of [27]. Our quasi-equilibration is also rather inexpensive, since the edge patches are

<sup>1</sup>We have learned very recently that a modification of [27] can lead to a polynomial-degree-robust estimate, see [28].

smaller than the usual vertex patches, employed in particular in [6]. Moreover, we can either solve the patch problems, see (3.9b), or replace them by a *sequential sweep* through tetrahedra sharing the given edge  $e$ , see (3.11b). This second option yields in particular a *fully explicit* (no local problem to be solved) a posteriori error estimate in the *lowest-order* setting  $p = 0$ . The price we pay for these advantages is the emergence of the constant  $\sqrt{6}C_L C_{\text{cont}}$  in our upper bound (1.5); here  $C_{\text{cont}}$  is fully computable, only depends on the mesh shape regularity, and takes values around 10 for usual meshes, whereas  $C_L$  only depends on the shape of the domain  $\Omega$ , with in particular  $C_L = 1$  whenever  $\Omega$  is convex. Crucially, our estimates are *locally efficient* and polynomial-degree robust in that

$$(1.6) \quad \|\mathbf{h}_h^e - \nabla \times \mathbf{E}_h\|_{\omega_e} \leq C \|\nabla \times (\mathbf{E} - \mathbf{E}_h)\|_{\omega_e}$$

for all edges  $e$ , where the constant  $C$  only depends on the shape-regularity of the mesh, as an immediate application of our first main result in Theorem 3.1. It is worth noting that the lower bound (1.6) is completely local to the edge patches  $\omega_e$  and does not comprise any neighborhood.

**1.3. Organization of this contribution.** The rest of this contribution is organised as follows. In Section 2, we recall the functional spaces, state a weak formulation of problem (1.2), describe the finite-dimensional Lagrange, Nédélec, and Raviart–Thomas spaces, and introduce the numerical discretization of (1.2). Our two main results, Theorems 3.1 and 3.2, are formulated and discussed in Section 3. Section 4 presents a numerical illustration of our a posteriori error estimates for Maxwell’s equations (1.2). Sections 5 and 6 are then dedicated to the proofs of our two main results.

## 2. MAXWELL’S EQUATIONS AND NÉDÉLEC’S FINITE ELEMENT DISCRETIZATION

**2.1. Basic notation.** Consider a Lipschitz polyhedral subdomain  $\omega \subseteq \Omega$ . We denote by  $H^1(\omega)$  the space of scalar-valued  $L^2(\omega)$  functions with  $\mathbf{L}^2(\omega)$  weak gradient,  $\mathbf{H}(\text{curl}, \omega)$  the space of vector-valued  $\mathbf{L}^2(\omega)$  fields with  $\mathbf{L}^2(\omega)$  weak curl, and  $\mathbf{H}(\text{div}, \omega)$  the space of vector-valued  $\mathbf{L}^2(\omega)$  fields with  $L^2(\omega)$  weak divergence. Below, we use the notation  $(\cdot, \cdot)_\omega$  for the  $L^2(\omega)$  or  $\mathbf{L}^2(\omega)$  scalar product and  $\|\cdot\|_\omega$  for the associated norm.  $L^\infty(\omega)$  and  $\mathbf{L}^\infty(\omega)$  are the spaces of essentially bounded functions with norm  $\|\cdot\|_{\infty, \omega}$ .

Let  $\mathbf{H}^1(\omega) := \{\mathbf{v} \in \mathbf{L}^2(\omega) \mid v_i \in H^1(\omega), i = 1, 2, 3\}$ . Let  $\gamma_D, \gamma_N$  be two disjoint, open, possibly empty subsets of  $\partial\omega$  such that  $\partial\omega = \overline{\gamma_D} \cup \overline{\gamma_N}$ . Then  $H_{\gamma_D}^1(\omega) := \{v \in H^1(\omega) \mid v = 0 \text{ on } \gamma_D\}$  is the subspace of  $H^1(\omega)$  formed by functions vanishing on  $\gamma_D$  in the sense of traces. Furthermore,  $\mathbf{H}_{\gamma_D}(\text{curl}, \omega)$  is the subspace of  $\mathbf{H}(\text{curl}, \omega)$  composed of fields with vanishing tangential trace on  $\gamma_D$ ,  $\mathbf{H}_{\gamma_D}(\text{curl}, \omega) := \{\mathbf{v} \in \mathbf{H}(\text{curl}, \omega) \text{ such that } (\nabla \times \mathbf{v}, \boldsymbol{\varphi})_\omega - (\mathbf{v}, \nabla \times \boldsymbol{\varphi})_\omega = 0 \text{ for all functions } \boldsymbol{\varphi} \in \mathbf{H}^1(\omega) \text{ such that } \boldsymbol{\varphi} \times \mathbf{n} = \mathbf{0} \text{ on } \partial\omega \setminus \gamma_D\}$ , where  $\mathbf{n}$  is the unit outward normal to  $\omega$ . Similarly,  $\mathbf{H}_{\gamma_N}(\text{div}, \omega)$  is the subspace of  $\mathbf{H}(\text{div}, \omega)$  composed of fields with vanishing normal trace on  $\gamma_N$ ,  $\mathbf{H}_{\gamma_N}(\text{div}, \omega) := \{\mathbf{v} \in \mathbf{H}(\text{div}, \omega) \text{ such that } (\nabla \cdot \mathbf{v}, \varphi)_\omega + (\mathbf{v}, \nabla \varphi)_\omega = 0 \text{ for all functions } \varphi \in H_{\gamma_D}^1(\omega)\}$ . We refer the reader to [26] for further insight on vector-valued Sobolev spaces with mixed boundary conditions.

**2.2. Maxwell's equations.** If  $\mathbf{j} \in \mathbf{H}_{\Gamma_N}(\text{div}, \Omega)$  with  $\nabla \cdot \mathbf{j} = 0$ , then the classical weak formulation of (1.2) consists in finding a pair  $(\mathbf{E}, q) \in \mathbf{H}_{\Gamma_D}(\text{curl}, \Omega) \times H_{\Gamma_D}^1(\Omega)$  such that

$$(2.1) \quad \begin{cases} (\mathbf{E}, \nabla w)_\Omega = 0 & \forall w \in H_{\Gamma_D}^1(\Omega), \\ (\nabla \times \mathbf{E}, \nabla \times \mathbf{v})_\Omega + (\nabla q, \mathbf{v})_\Omega = (\mathbf{j}, \mathbf{v})_\Omega & \forall \mathbf{v} \in \mathbf{H}_{\Gamma_D}(\text{curl}, \Omega). \end{cases}$$

When  $|\Gamma_D| = 0$ , the Lagrange multiplier  $q$  is defined up to a constant which can be fixed by restricting  $H^1(\Omega)$  to its subspace of functions with vanishing mean-value. Since  $\nabla H_{\Gamma_D}^1(\Omega) \subset \mathbf{H}_{\Gamma_D}(\text{curl}, \Omega)$ , picking the test function  $\mathbf{v} = \nabla q$  in the second equation of (2.1) shows that  $q = 0$ , so that we actually have

$$(2.2) \quad (\nabla \times \mathbf{E}, \nabla \times \mathbf{v})_\Omega = (\mathbf{j}, \mathbf{v})_\Omega \quad \forall \mathbf{v} \in \mathbf{H}_{\Gamma_D}(\text{curl}, \Omega).$$

**2.3. Tetrahedral mesh.** We consider a matching tetrahedral mesh  $\mathcal{T}_h$  of  $\Omega$ , i.e.,  $\bigcup_{K \in \mathcal{T}_h} \overline{K} = \overline{\Omega}$ , each  $K$  is a tetrahedron, and the intersection of two distinct tetrahedra is either empty or their common vertex, edge, or face. We also assume that  $\mathcal{T}_h$  is compatible with the partition  $\partial\Omega = \overline{\Gamma_D} \cup \overline{\Gamma_N}$  of the boundary, which means that each boundary face entirely lies either in  $\overline{\Gamma_D}$  or in  $\overline{\Gamma_N}$ . We denote by  $\mathcal{E}_h$  the set of edges of the mesh  $\mathcal{T}_h$  and by  $\mathcal{F}_h$  the set of faces. The mesh is oriented which means that every edge  $e \in \mathcal{E}_h$  is equipped with a fixed unit tangent vector  $\boldsymbol{\tau}_e$  and every face  $F \in \mathcal{F}_h$  is equipped with a fixed unit normal vector  $\mathbf{n}_F$  (see [22, Chapter 10]). Finally for every mesh cell  $K \in \mathcal{T}_h$ ,  $\mathbf{n}_K$  denotes its unit outward normal vector. The choice of the orientation is not relevant in what follows, but we keep it fixed in the whole work.

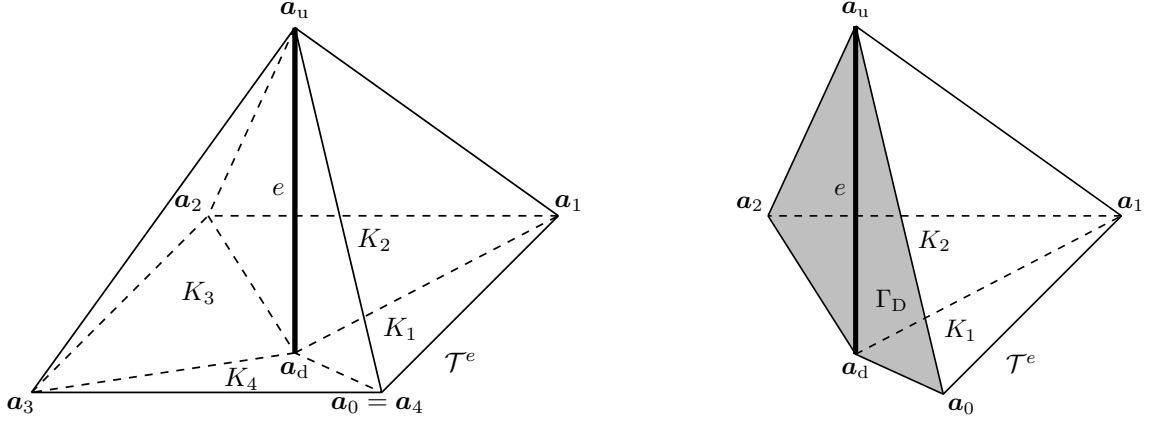
If  $K \in \mathcal{T}_h$ ,  $\mathcal{E}_K \subset \mathcal{E}_h$  denotes the set of edges of  $K$ , whereas for each edge  $e \in \mathcal{E}_h$ , we denote by  $\mathcal{T}^e$  the associated ‘‘edge-patch’’ that consists of those tetrahedra  $K \in \mathcal{T}_h$  for which  $e \in \mathcal{E}_K$ , see Figure 1. We also employ the notation  $\omega_e \subset \Omega$  for the open subdomain associated with the patch  $\mathcal{T}^e$ . We say that  $e \in \mathcal{E}_h$  is a boundary edge if it lies on  $\partial\Omega$  and that it is an interior edge otherwise (in this case,  $e$  may touch the boundary at one of its endpoints). The set of boundary edges is partitioned into the subset of Dirichlet edges  $\mathcal{E}_h^D$  with edges  $e$  that lie in  $\overline{\Gamma_D}$  and the subset of Neumann edges  $\mathcal{E}_h^N$  collecting the remaining boundary edges. For all edges  $e \in \mathcal{E}_h$ , we denote by  $\Gamma_N^e$  the open subset of  $\partial\omega_e$  corresponding to the collection of faces having  $e$  as edge and lying in  $\overline{\Gamma_N}$ . Note that for all interior edges,  $\Gamma_N^e$  is empty and that  $\Gamma_N^e$  never equals the whole  $\partial\omega_e$ . We also set  $\Gamma_D^e := (\partial\omega_e \setminus \Gamma_N^e)^\circ$ .

For every tetrahedron  $K \in \mathcal{T}_h$ , we denote the diameter and the inscribed ball diameter respectively by

$$h_K := \sup_{\mathbf{x}, \mathbf{y} \in K} |\mathbf{x} - \mathbf{y}|, \quad \rho_K := \sup \{r > 0 \mid \exists \mathbf{x} \in K; B(\mathbf{x}, r) \subset K\},$$

where  $B(\mathbf{x}, r)$  is the ball of diameter  $r$  centered at  $\mathbf{x}$ . For every edge  $e \in \mathcal{E}_h$ ,  $|e|$  is its measure (length) and

$$(2.3) \quad h_{\omega_e} := \sup_{\mathbf{x}, \mathbf{y} \in \omega_e} |\mathbf{x} - \mathbf{y}|, \quad \rho_e := \min_{K \in \mathcal{T}^e} \rho_K.$$

FIGURE 1. Interior (left) and Dirichlet boundary (right) edge patch  $\mathcal{T}^e$ 

The shape-regularity parameters of the tetrahedron  $K$  and of the edge-patch  $\mathcal{T}^e$  are respectively defined by

$$(2.4) \quad \kappa_K := h_K/\rho_K \quad \text{and} \quad \kappa_e := h_{\omega_e}/\rho_e.$$

**2.4. Lagrange, Nédélec, and Raviart–Thomas elements.** If  $K$  is a tetrahedron and  $p' \geq 0$  is an integer, we employ the notation  $\mathcal{P}_{p'}(K)$  for the space of scalar-valued (Lagrange) polynomials of degree less than or equal to  $p'$  on  $K$  and  $\tilde{\mathcal{P}}_{p'}(K)$  for homogeneous polynomials of degree  $p'$ . The notation  $\mathcal{P}_{p'}(K)$  (resp.  $\tilde{\mathcal{P}}_{p'}(K)$ ) then stands for the space of vector-valued polynomials such that all their components belong to  $\mathcal{P}_{p'}(K)$  (resp.  $\tilde{\mathcal{P}}_{p'}(K)$ ). Following [35] and [39], we then define on each tetrahedron  $K \in \mathcal{T}_h$  the polynomial spaces of Nédélec and Raviart–Thomas functions as follows:

$$(2.5) \quad \mathcal{N}_{p'}(K) := \mathcal{P}_{p'}(K) + \tilde{\mathcal{S}}_{p'+1}(K) \quad \text{and} \quad \mathcal{RT}_{p'}(K) := \mathcal{P}_{p'}(K) + \mathbf{x}\tilde{\mathcal{P}}_{p'}(K),$$

where  $\tilde{\mathcal{S}}_{p'}(K) := \{\mathbf{v} \in \tilde{\mathcal{P}}_{p'}(K) \mid \mathbf{x} \cdot \mathbf{v}(\mathbf{x}) = 0 \quad \forall \mathbf{x} \in \bar{K}\}$ . For any collection of tetrahedra  $\mathcal{T} = \bigcup_{K \in \mathcal{T}} \{K\}$  and the corresponding open subdomain  $\omega = (\bigcup_{K \in \mathcal{T}} K)^\circ \subset \Omega$ , we also write

$$\begin{aligned} \mathcal{P}_{p'}(\mathcal{T}) &:= \{v \in L^2(\omega) \mid v|_K \in \mathcal{P}_{p'}(K) \quad \forall K \in \mathcal{T}\}, \\ \mathcal{N}_{p'}(\mathcal{T}) &:= \{\mathbf{v} \in \mathbf{L}^2(\omega) \mid \mathbf{v}|_K \in \mathcal{N}_{p'}(K) \quad \forall K \in \mathcal{T}\}, \\ \mathcal{RT}_{p'}(\mathcal{T}) &:= \{\mathbf{v} \in \mathbf{L}^2(\omega) \mid \mathbf{v}|_K \in \mathcal{RT}_{p'}(K) \quad \forall K \in \mathcal{T}\}. \end{aligned}$$

**2.5. Nédélec's finite element discretization.** For the discretization of problem (2.1), we consider in this work finite-dimensional subspaces  $S_h \subset H_{\Gamma_D}^1(\Omega)$  and  $\mathbf{V}_h \subset \mathbf{H}_{\Gamma_D}(\mathbf{curl}, \Omega)$ . For a fixed integer  $p \geq 0$ , let the Lagrange and Nédélec finite element spaces be given by

$$S_h := \mathcal{P}_{p+1}(\mathcal{T}_h) \cap H_{\Gamma_D}^1(\Omega) \quad \text{and} \quad \mathbf{V}_h := \mathcal{N}_p(\mathcal{T}_h) \cap \mathbf{H}_{\Gamma_D}(\mathbf{curl}, \Omega).$$



The discrete problem consists in finding a pair  $(\mathbf{E}_h, q_h) \in \mathbf{V}_h \times S_h$  such that

$$(2.6) \quad \begin{cases} (\mathbf{E}_h, \nabla w_h)_\Omega = 0 & \forall w_h \in S_h, \\ (\nabla \times \mathbf{E}_h, \nabla \times \mathbf{v}_h)_\Omega + (\nabla q_h, \mathbf{v}_h)_\Omega = (\mathbf{j}, \mathbf{v}_h)_\Omega & \forall \mathbf{v}_h \in \mathbf{V}_h. \end{cases}$$

Since  $\nabla S_h \subset \mathbf{V}_h$ ,  $\nabla \cdot \mathbf{j} = 0$ , and  $\mathbf{j} \in \mathbf{H}_{\Gamma_N}(\text{div}, \Omega)$ , picking  $\mathbf{v}_h = \nabla q_h$  in the second equation of (2.6) shows that  $q_h = 0$ , so that actually we have

$$(2.7) \quad (\nabla \times \mathbf{E}_h, \nabla \times \mathbf{v}_h)_\Omega = (\mathbf{j}, \mathbf{v}_h)_\Omega \quad \forall \mathbf{v}_h \in \mathbf{V}_h.$$

### 3. MAIN RESULTS

This section presents our two main results.

**3.1. Stable discrete best-approximation of broken polynomials in  $\mathbf{H}(\text{curl})$ .** Our first main result is the combination and extension of [16, Theorem 7.2] and [10, Corollary 3.4] to the edge patches  $\mathcal{T}^e$ , complementing similar previous achievements in  $\mathbf{H}(\text{div})$  in two space dimensions in [5, Theorem 7] and in  $H^1$  and  $\mathbf{H}(\text{div})$  in three space dimensions [25, Corollaries 3.1 and 3.3].

**Theorem 3.1** ( $\mathbf{H}(\text{curl})$  best-approximation on an edge patch). *Let an edge  $e \in \mathcal{E}_h$  and the associated edge patch  $\mathcal{T}^e$  with subdomain  $\omega_e$  be fixed. Then, for every polynomial degree  $p \geq 0$ , all  $\mathbf{j}_h^e \in \mathcal{RT}_p(\mathcal{T}^e) \cap \mathbf{H}_{\Gamma_N^e}(\text{div}, \omega_e)$  with  $\nabla \cdot \mathbf{j}_h^e = 0$ , and all  $\chi_h \in \mathcal{N}_p(\mathcal{T}^e)$ , the following holds:*

$$(3.1) \quad \min_{\substack{\mathbf{h}_h \in \mathcal{N}_p(\mathcal{T}^e) \cap \mathbf{H}_{\Gamma_N^e}(\text{curl}, \omega_e) \\ \nabla \times \mathbf{h}_h = \mathbf{j}_h^e}} \|\mathbf{h}_h - \chi_h\|_{\omega_e} \leq C_{\text{st},e} \min_{\substack{\mathbf{h} \in \mathbf{H}_{\Gamma_N^e}(\text{curl}, \omega_e) \\ \nabla \times \mathbf{h} = \mathbf{j}_h^e}} \|\mathbf{h} - \chi_h\|_{\omega_e}.$$

Here both minimizers are uniquely defined and the constant  $C_{\text{st},e}$  only depends on the shape-regularity parameter  $\kappa_e$  of the patch  $\mathcal{T}^e$  defined in (2.4).

Note that the converse inequality to (3.1) holds trivially with constant 1, i.e.,

$$\min_{\substack{\mathbf{h} \in \mathbf{H}_{\Gamma_N^e}(\text{curl}, \omega_e) \\ \nabla \times \mathbf{h} = \mathbf{j}_h^e}} \|\mathbf{h} - \chi_h\|_{\omega_e} \leq \min_{\substack{\mathbf{h}_h \in \mathcal{N}_p(\mathcal{T}^e) \cap \mathbf{H}_{\Gamma_N^e}(\text{curl}, \omega_e) \\ \nabla \times \mathbf{h}_h = \mathbf{j}_h^e}} \|\mathbf{h}_h - \chi_h\|_{\omega_e}.$$

This also makes apparent the power of the statement (3.1), stating that for piecewise polynomial data  $\mathbf{j}_h^e$  and  $\chi_h$ , the best-approximation error over a piecewise polynomial subspace of  $\mathbf{H}_{\Gamma_N^e}(\text{curl}, \omega_e)$  of degree  $p$  is, up to a  $p$ -independent constant, equivalent to the best-approximation error over the entire space  $\mathbf{H}_{\Gamma_N^e}(\text{curl}, \omega_e)$ . The proof of this result is presented in Section 6. We also remark that Proposition 6.6 below gives an equivalent reformulation of Theorem 3.1 in the form of a stable broken  $\mathbf{H}(\text{curl})$  polynomial extension in the edge patch.

**3.2.  $p$ -robust quasi-equilibration a posteriori estimates for Maxwell's equations.** Our second main result is a polynomial-degree-robust a posteriori error analysis of Nédélec's finite elements (2.6) applied to Maxwell's equations (1.2). The local efficiency proof is an important application of Theorem 3.1. To present these results in detail, we need to prepare a few tools.



3.2.1. *Local functional inequalities and data oscillation.* For every edge  $e \in \mathcal{E}_h$ , we associate with the subdomain  $\omega_e$  a local Sobolev space  $H_\star^1(\omega_e)$  with mean/boundary value zero,

$$(3.2) \quad H_\star^1(\omega_e) := \begin{cases} \{v \in H^1(\omega_e) \mid v = 0 \text{ on faces having } e \text{ as edge} \\ \text{and lying in } \overline{\Gamma_D}\} & \text{if } e \in \mathcal{E}_h^D, \\ \{v \in H^1(\omega_e) \mid \int_{\omega_e} v = 0\} & \text{otherwise.} \end{cases}$$

Poincaré's inequality then states that there exists a constant  $C_{P,e}$  only depending on the shape-regularity parameter  $\kappa_e$  such that

$$(3.3) \quad \|v\|_{\omega_e} \leq C_{P,e} h_{\omega_e} \|\nabla v\|_{\omega_e} \quad \forall v \in H_\star^1(\omega_e).$$

Computable values of  $C_{P,e}$  are discussed in, e.g., [8, 42], see also the concise discussion in [3];  $C_{P,e}$  can be taken as  $1/\pi$  for convex interior patches and as 1 for most Dirichlet boundary patches.

We also need a variant of (3.3) for vector-valued fields called Weber's inequality. Specifically, following [26, Proposition 7.4], the following holds true for every edge  $e \in \mathcal{E}_h$ :

$$(3.4) \quad \|\mathbf{v}\|_{\omega_e} \leq C_{W,e} h_{\omega_e} \|\nabla \times \mathbf{v}\|_{\omega_e} \quad \forall \mathbf{v} \in \mathbf{H}_{\Gamma_D^e}(\text{curl}, \omega_e) \cap \mathbf{H}_{\Gamma_N^e}(\text{div}, \omega_e) \text{ with } \nabla \cdot \mathbf{v} = 0,$$

where the constant  $C_{W,e}$  only depends on the geometry of the patch and not on its size. When the patch is convex and  $\Gamma_N^e = \emptyset$ , a combination of Theorem 2.1 and Lemma 2.2 of [9] together with Theorem 3.7 of [29] shows that if  $\mathbf{v} \in \mathbf{H}_0(\text{curl}, \omega_e) \cap \mathbf{H}(\text{div}, \omega_e)$  with  $\nabla \cdot \mathbf{v} = 0$ , then  $\mathbf{v} \in \mathbf{H}^1(\omega_e)$  with

$$(3.5) \quad \|\nabla \mathbf{v}\|_{\omega_e} \leq \|\nabla \times \mathbf{v}\|_{\omega_e},$$

so that  $C_{W,e}$  can be expressed in terms of usual Poincaré constants. In particular, it is clear that  $C_{W,e}$  only depends on  $\kappa_e$  in this case.

In the remainder of this work, we assume that there exists a constant  $C_L$  such that for all  $v \in \mathbf{H}_{\Gamma_D}(\text{curl}, \Omega)$ , there exists  $\mathbf{w} \in \mathbf{H}^1(\Omega) \cap \mathbf{H}_{\Gamma_D}(\text{curl}, \Omega)$  such that  $\nabla \times \mathbf{w} = \nabla \times v$  and

$$(3.6) \quad \|\nabla \mathbf{w}\|_{\Omega} \leq C_L \|\nabla \times v\|_{\Omega}.$$

When either  $\Gamma_D$  or  $\Gamma_N$  has zero measure, the existence of  $C_L$  follows from Theorems 3.4 and 3.5 of [9]. If in addition  $\Omega$  is convex, one can take  $C_L = 1$  (see [9] together with [29, Theorem 3.7] for Dirichlet boundary conditions and [29, Theorem 3.9] for Neumann boundary conditions). As we are not aware of an equivalent version of Theorems 3.4 and 3.5 of [9] for mixed boundary conditions, we leave the existence of  $C_L$  as a hypothesis in this case.

To define our estimators, it is convenient to introduce a piecewise polynomial approximation of the datum  $\mathbf{j} \in \mathbf{H}_{\Gamma_N}(\text{div}, \Omega)$  by setting on every edge patch  $\mathcal{T}^e$  associated with the edge  $e \in \mathcal{E}_h$ ,

$$(3.7) \quad \mathbf{j}_h^e := \underset{\substack{\mathbf{j}_h \in \mathcal{RT}_p(\mathcal{T}^e) \cap \mathbf{H}_{\Gamma_N^e}(\text{div}, \omega_e) \\ \nabla \cdot \mathbf{j}_h = 0}}{\text{argmin}} \|\mathbf{j} - \mathbf{j}_h\|_{\omega_e}.$$

Then we define the data oscillation estimators as

$$(3.8) \quad \text{osc}_e := C_{W,e} h_{\omega_e} \|\mathbf{j} - \mathbf{j}_h^e\|_{\omega_e}.$$

3.2.2. *Quasi-equilibration by edge-patch problems.* Our a posteriori estimator is constructed via a simple restriction of the right-hand side of (1.3) to edge patches, where no hat function is employed, no modification of the source term appears, and no boundary condition is imposed for interior edges, in contrast to the usual equilibration in [18, 6, 24]. Specifically, recalling (3.7), for each edge  $e \in \mathcal{E}_h$ , we introduce

$$(3.9a) \quad \eta_e := \|\mathbf{h}_h^{e,*} - \nabla \times \mathbf{E}_h\|_{\omega_e},$$

$$(3.9b) \quad \mathbf{h}_h^{e,*} := \underset{\substack{\mathbf{h}_h \in \mathcal{N}_p(\mathcal{T}^e) \cap \mathbf{H}_{\Gamma_N^e}(\text{curl}, \omega_e) \\ \nabla \times \mathbf{h}_h = \mathbf{j}_h^e}}{\text{argmin}} \|\mathbf{h}_h - \nabla \times \mathbf{E}_h\|_{\omega_e}.$$

Since  $\mathbf{j}_h^e \in \mathcal{RT}_p(\mathcal{T}^e) \cap \mathbf{H}_{\Gamma_N^e}(\text{div}, \omega_e)$  with  $\nabla \cdot \mathbf{j}_h^e = 0$ , the surjectivity of the curl operator restricted to  $\mathcal{N}_p(\mathcal{T}^e) \cap \mathbf{H}_{\Gamma_N^e}(\text{curl}, \omega_e)$  implies that the minimizing set is nonempty. Consequently, the existence and uniqueness of the minimizer  $\mathbf{h}_h^{e,*}$  follows by standard convexity arguments. The minimization problem (3.9) is equivalent to the following patchwise mixed finite element problem: Find  $\mathbf{h}_h^* \in \mathcal{N}_p(\mathcal{T}^e) \cap \mathbf{H}_{\Gamma_N^e}(\text{curl}, \omega_e)$ ,  $\boldsymbol{\sigma}_h^* \in \mathcal{RT}_p(\mathcal{T}^e) \cap \mathbf{H}_{\Gamma_N^e}(\text{div}, \omega_e)$ , and  $\zeta_h^* \in \mathcal{P}_p(\mathcal{T}^e)$  such that

$$(3.10) \quad \begin{cases} (\mathbf{h}_h^*, \mathbf{v}_h)_{\omega_e} + (\boldsymbol{\sigma}_h^*, \nabla \times \mathbf{v}_h)_{\omega_e} & = (\nabla \times \mathbf{E}_h, \mathbf{v}_h)_{\omega_e}, \\ (\nabla \times \mathbf{h}_h^*, \mathbf{w}_h)_{\omega_e} + (\zeta_h^*, \nabla \cdot \mathbf{w}_h)_{\omega_e} & = (\mathbf{j}, \mathbf{w}_h)_{\omega_e}, \\ (\nabla \cdot \boldsymbol{\sigma}_h^*, \varphi_h)_{\omega_e} & = 0 \end{cases}$$

for all  $\mathbf{v}_h \in \mathcal{N}_p(\mathcal{T}^e) \cap \mathbf{H}_{\Gamma_N^e}(\text{curl}, \omega_e)$ ,  $\mathbf{w}_h \in \mathcal{RT}_p(\mathcal{T}^e) \cap \mathbf{H}_{\Gamma_N^e}(\text{div}, \omega_e)$ , and  $\varphi_h \in \mathcal{P}_p(\mathcal{T}^e)$ , which is used in practice to compute  $\mathbf{h}_h^*$  (note that from the optimality condition associated with (3.7), using  $\mathbf{j}$  or  $\mathbf{j}_h^e$  in (3.10) is equivalent).

3.2.3. *Quasi-equilibration by sequential sweeps.* The patch problems (3.9) lead to the solution of the linear systems (3.10). Although these are local around each edge and are mutually independent, they induce some computational cost. This cost can be significantly reduced by taking inspiration from [18], [32], [43, Section 4.3.3], the proof of [5, Theorem 7], or [25, Section 6] and literally following the proof in Section 6 below. This leads to the following estimate whose price is the sequential sweep through tetrahedra sharing the given edge and a tetrahedron solve that is non-trivial only for higher-order elements:

$$(3.11a) \quad \eta_e := \|\mathbf{h}_h^{e,\heartsuit} - \nabla \times \mathbf{E}_h\|_{\omega_e},$$

where  $\mathbf{h}_h^{e,\heartsuit} \in \mathcal{N}_p(\mathcal{T}^e) \cap \mathbf{H}(\text{curl}, \omega_e)$  is given by

$$(3.11b) \quad \mathbf{h}_h^{e,\heartsuit}|_K := \min_{\substack{\mathbf{h}_h \in \mathcal{N}_p(K) \\ \nabla \times \mathbf{h}_h = \mathbf{j}_h^e \\ \mathbf{h}_h|_{\mathcal{F}} = \mathbf{r}_{\mathcal{F}}}} \|\mathbf{h}_h - \nabla \times \mathbf{E}_h\|_K \quad \forall K \in \mathcal{T}^e.$$

Here  $\mathcal{F}$  is the set of faces that  $K$  shares with elements  $K'$  previously considered or lying in  $\Gamma_N^e$ , and  $\mathbf{h}_h|_{\mathcal{F}}$  denotes the restriction of the tangential trace of  $\mathbf{h}_h$  to the faces of  $\mathcal{F}$  (see Definition 6.1 below). The boundary datum  $\mathbf{r}_{\mathcal{F}}$  is either the tangential trace of  $\mathbf{h}_h^{e,\heartsuit}|_{K'}$  obtained after minimization over the previous  $K'$ , or  $\mathbf{0}$  on  $\Gamma_N^e$ .

3.2.4. *Guaranteed, locally efficient, and  $p$ -robust a posteriori estimates.* For each edge  $e \in \mathcal{E}_h$ , let  $\boldsymbol{\psi}_e$  be the (scaled) edge basis functions of the lowest-order Nédélec space, in particular satisfying  $\text{supp } \boldsymbol{\psi}_e = \overline{\omega_e}$ . More precisely, let  $\boldsymbol{\psi}_e$  be the unique function in  $\mathcal{N}_0(\mathcal{T}_h) \cap \mathbf{H}(\text{curl}, \Omega)$  such that

$$(3.12) \quad \int_{e'} \boldsymbol{\psi}_e \cdot \boldsymbol{\tau}_{e'} = \delta_{e,e'} |e|,$$

recalling that  $\boldsymbol{\tau}_{e'}$  is the unit tangent vector orienting the edge  $e'$ . We define

$$(3.13) \quad C_{\text{cont},e} := \|\boldsymbol{\psi}_e\|_{\infty,\omega_e} + C_{\text{P},e} h_{\omega_e} \|\nabla \times \boldsymbol{\psi}_e\|_{\infty,\omega_e} \quad \forall e \in \mathcal{E}_h,$$

where  $C_{\text{P},e}$  is Poincaré's constant from (3.3) and  $h_{\omega_e}$  is the diameter of the patch domain  $\omega_e$ . We actually show in Lemma 5.3 below that

$$(3.14) \quad C_{\text{cont},e} \leq C_{\kappa_e} := \frac{2|e|}{\rho_e} (1 + C_{\text{P},e} \kappa_e) \quad \forall e \in \mathcal{E}_h,$$

where  $\rho_e$  is defined in (2.3);  $C_{\text{cont},e}$  is thus uniformly bounded by the patch-regularity parameter  $\kappa_e$  defined in (2.4).

**Theorem 3.2** ( *$p$ -robust a posteriori error estimate*). *Let  $\mathbf{E}$  be the weak solution of Maxwell's equations (2.1) and let  $\mathbf{E}_h$  be its Nédélec's finite element approximation solving (2.6). Let the data oscillation estimators  $\text{osc}_e$  be defined in (3.8) and the quasi-equilibration estimators  $\eta_e$  be defined in either (3.9) or (3.11). Then, with the constants  $C_L$ ,  $C_{\text{cont},e}$ , and  $C_{\text{st},e}$  from respectively (3.6), (3.13), and (3.1), the following global upper bound holds true:*

$$(3.15) \quad \|\nabla \times (\mathbf{E} - \mathbf{E}_h)\|_{\Omega} \leq \sqrt{6} C_L \left( \sum_{e \in \mathcal{E}_h} C_{\text{cont},e}^2 (\eta_e + \text{osc}_e)^2 \right)^{1/2},$$

as well as the following lower bound local to the edge patches  $\omega_e$ :

$$(3.16) \quad \eta_e \leq C_{\text{st},e} (\|\nabla \times (\mathbf{E} - \mathbf{E}_h)\|_{\omega_e} + \text{osc}_e) \quad \forall e \in \mathcal{E}_h.$$

3.3. **Comments.** A few comments about Theorem 3.2 are in order.

- The constant  $C_L$  from (3.6) can be taken as 1 for convex domains  $\Omega$  and if either  $\Gamma_D$  or  $\Gamma_N$  is empty. In the general case however, we do not know the value of this constant, see the discussion in Section 3.2.1. The presence of the constant  $C_L$  is customary in a posteriori error analysis of Maxwell's equations, it appears, e.g., in Lemma 3.10 of [37] and Assumption 2 of [2].
- The constant  $C_{\text{cont},e}$  defined in (3.13) can be fully computed in practical implementations. Indeed, computable values of Poincaré's constant  $C_{\text{P},e}$  from (3.3) are discussed in Section 3.2.1. Recall also that  $C_{\text{cont},e}$  only depends on the shape-regularity parameter  $\kappa_e$  of the edge patch  $\mathcal{T}^e$ .
- A computable upper bound on the constant  $C_{\text{st},e}$  from (3.1) can be obtained by proceeding as in [24, Lemma 3.23]. The crucial property is again that  $C_{\text{st},e}$  can be uniformly bounded by the shape-regularity parameter  $\kappa_e$  of the edge patch  $\mathcal{T}^e$ .

- The key feature of the estimators of Theorem 3.2 is their polynomial-degree-robustness (or, shortly,  $p$ -robustness). This suggests to use them in  $hp$ -adaptation strategies, cf., e.g., [13, 14, 41] and the references therein.
- In contrast to [6, 31, 27], we do not obtain here an equilibrated flux, i.e., a piecewise polynomial  $\mathbf{h}_h^*$  in the global space  $\mathcal{N}_p(\mathcal{T}_h) \cap \mathbf{H}_{\Gamma_D}(\mathbf{curl}, \Omega)$  satisfying, for piecewise polynomial  $\mathbf{j}$ ,  $\nabla \times \mathbf{h}_h^* = \mathbf{j}$ . We only obtain from (3.9) that  $\mathbf{h}_h^{e,*} \in \mathcal{N}_p(\mathcal{T}^e) \cap \mathbf{H}_{\Gamma_N}(\mathbf{curl}, \omega_e)$  and  $\nabla \times \mathbf{h}_h^{e,*} = \mathbf{j}$  locally in every edge-patch  $\mathcal{T}^e$ , but we do not build a  $\mathbf{H}_{\Gamma_D}(\mathbf{curl}, \Omega)$ -conforming discrete field; we call this process quasi-equilibration.
- The upper bound (3.15) does not come from the Prager–Synge equality (1.3) and is typically worse than those obtained from (1.3) with an equilibrated flux  $\mathbf{h}_h^* \in \mathcal{N}_p(\mathcal{T}_h) \cap \mathbf{H}_{\Gamma_D}(\mathbf{curl}, \Omega)$ , because of the presence of the multiplicative factor  $\sqrt{6}C_L C_{\text{cont},e}$ . On the other hand, it is typically cheaper to compute the upper bound (3.15) than those based on an equilibrated flux since 1) the problems (3.9) are solved on edge-patches, whereas full equilibration would require solving problems also on vertex-patches which are larger than edge-patches; 2) the estimators are computed in one stage only solving the problems (3.9); 3) quasi-equilibration with polynomial degree  $p$  is enough for  $p$ -robustness, in contrast to the usual need to increase the equilibration polynomial degree to  $p + 1$ , cf. [5, 24, 25].
- The sequential sweep through the patch in (3.11) eliminates the patchwise problems (3.9) and leads instead to merely elementwise problems (3.11b). These are still much cheaper than (3.9), and, in particular, for  $p = 0$ , i.e., lowest-order Nédélec elements in (2.6) with one unknown per edge, there is only one unknown in (3.11b) for each tetrahedron  $K \in \mathcal{T}^e$ , so that the estimator (3.11a) actually becomes explicit.

#### 4. NUMERICAL EXPERIMENTS

In this section we present some numerical experiments to illustrate the a posteriori error estimator from Theorem 3.2 and its use within an adaptive mesh procedure. We consider a test case with a smooth solution and a test case with a solution featuring an edge singularity.

**4.1. Smooth solution in the unit cube.** We first consider an example in the unit cube  $\Omega = (0, 1)^3$  and Neumann boundary conditions,  $\Gamma_N = \partial\Omega$  in (1.2) and its weak form (2.1). The analytical solution reads

$$\mathbf{E}(\mathbf{x}) := \begin{pmatrix} \sin(\pi\mathbf{x}_1) \cos(\pi\mathbf{x}_2) \cos(\pi\mathbf{x}_3) \\ -\cos(\pi\mathbf{x}_1) \sin(\pi\mathbf{x}_2) \cos(\pi\mathbf{x}_3) \\ 0 \end{pmatrix}.$$

One checks that  $\nabla \cdot \mathbf{E} = 0$  and that

$$\mathbf{j}(\mathbf{x}) := (\nabla \times \nabla \times \mathbf{E})(\mathbf{x}) = 3\pi^2 \begin{pmatrix} \sin(\pi\mathbf{x}_1) \cos(\pi\mathbf{x}_2) \cos(\pi\mathbf{x}_3) \\ -\cos(\pi\mathbf{x}_1) \sin(\pi\mathbf{x}_2) \cos(\pi\mathbf{x}_3) \\ 0 \end{pmatrix}.$$

We notice that  $C_L = 1$  since  $\Omega$  is convex.

We first propose an “ $h$ -convergence” test case in which, for a fixed polynomial degree  $p$ , we study the behavior of Nédélec’s approximation  $\mathbf{E}_h$  solving (2.6) and of the estimator of Theorem 3.2. We consider a sequence of meshes obtained by first splitting the unit cube into an  $N \times N \times N$  Cartesian grid and then splitting each of the small cubes into six tetrahedra, with the resulting mesh size  $h = \sqrt{3}/N$ . More precisely, each resulting edge-patch is convex here, so that the constant  $C_{P,e}$  in (3.13) can be taken as  $1/\pi$  for all internal patches, see the discussion in Section 3.2.1. Figure 2 presents the results. The top-left panel shows that the expected convergence rates of  $\mathbf{E}_h$  are obtained for  $p = 0, \dots, 3$ . The top-right panel presents the local efficiency of the estimator based on the indicators  $\eta_e$  evaluated using (3.9). We see that it is very good, the ratio of the patch indicator to the patch error being at most 2 for  $p = 0$ , and close to 1 for higher-order polynomials. This seems to indicate that the constant  $C_{\text{st},e}$  in (3.1) is rather small. The bottom panels of Figure 2 report on the global efficiency of the error indicators

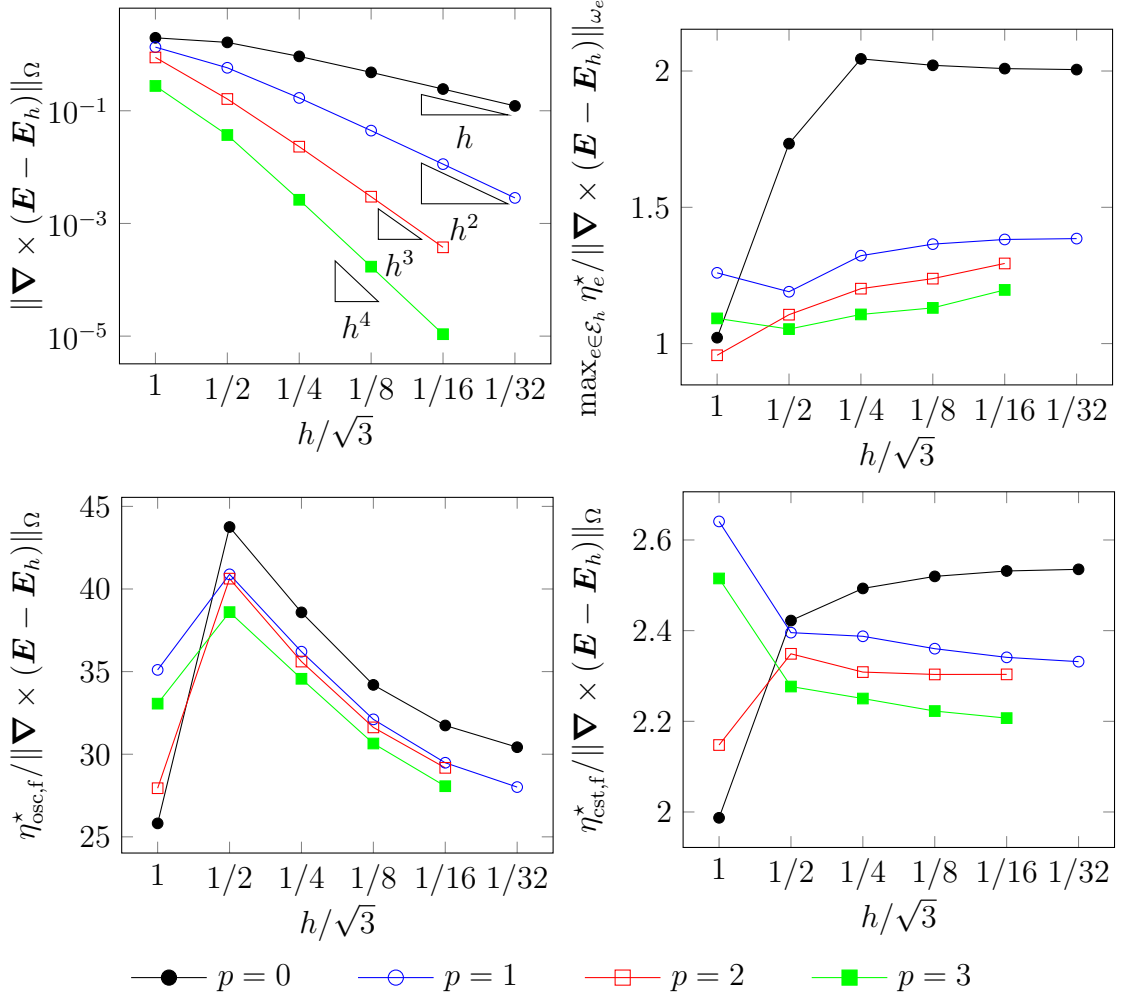
$$(4.1) \quad (\eta_{\text{ofree}})^2 := 6 \sum_{e \in \mathcal{E}_h} (C_{\text{cont},e} \eta_e)^2, \quad (\eta_{\text{cofree}})^2 := \sum_{e \in \mathcal{E}_h} (\eta_e)^2.$$

Here  $\eta_{\text{ofree}}$  corresponds to an “oscillation-free” estimator, obtained by discarding the oscillation terms  $\text{osc}_e$  in (3.15), whereas  $\eta_{\text{cofree}}$  corresponds to a “constant-and-oscillation-free” estimator. As shown in the bottom-right panel, the global efficiency of  $\eta_{\text{cofree}}$  is independent of the mesh size. The bottom-left panel shows a slight dependency of the global efficiency of  $\eta_{\text{ofree}}$  on the mesh size, but this is only due to the fact that Poincaré’s constants differ for boundary and internal patches. These two panels show that the efficiency actually slightly improves as the polynomial degree is increased, highlighting the  $p$ -robustness of the proposed estimator.

We then present a “ $p$ -convergence” test case where for a fixed mesh, we study the behavior of the solution and of the estimator when the polynomial degree  $p$  is increased. We provide this analysis for four different meshes. The three first meshes are structured as previously described with  $N = 1, 2$ , and  $4$ , whereas the last mesh is unstructured. The unstructured mesh has 358 elements, 1774 edges, and  $h = 0.37$ . Figure 3 presents the results. The top-left panel shows an exponential convergence rate as  $p$  is increased for all the meshes, which is in agreement with the theory, since the solution is analytic. The top-right panel shows that the local patch-by-patch efficiency is very good, and seems to tend to 1 as  $p$  increases. The bottom-right panel shows that the global efficiency of  $\eta_{\text{cofree}}$  also slightly improves as  $p$  is increased, and it seems to be rather independent of the mesh. The bottom-left panel shows that the global efficiency of  $\eta_{\text{ofree}}$  is significantly worse on the unstructured mesh. This is because in the absence of convex patches, we employ for  $C_{P,e}$  the estimate from [42] instead of the constant  $1/\pi$ . We believe that this performance could be improved by providing sharper Poincaré constants.

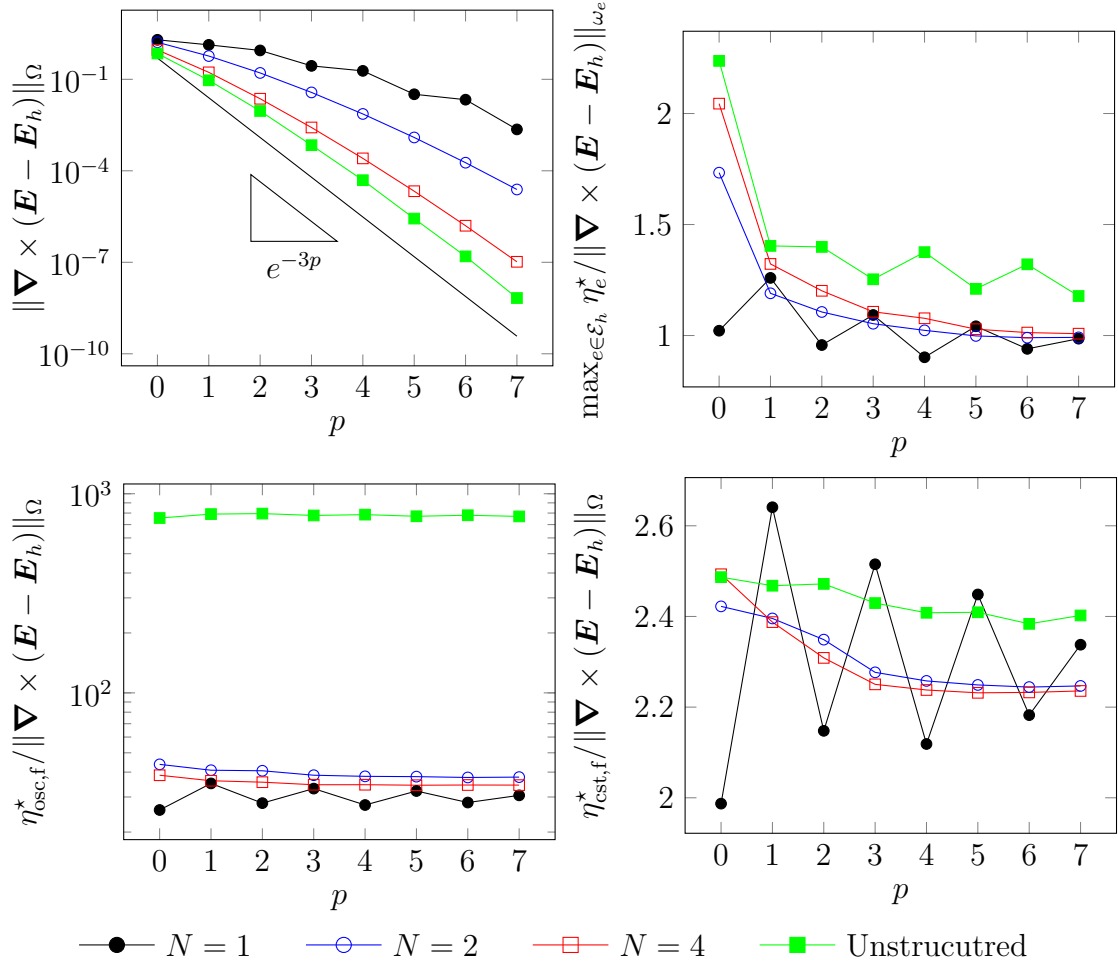
**4.2. Singular solution in an L-shaped domain.** We now turn our attention to an L-shaped domain featuring a singular solution. Specifically,  $\Omega := L \times (0, 1)$ , where

$$L := \{ \mathbf{x} = (r \cos \theta, r \sin \theta) \mid |\mathbf{x}_1|, |\mathbf{x}_2| \leq 1 \quad 0 \leq \theta \leq 3\pi/2 \},$$


 FIGURE 2.  $h$ -convergence for the unit cube experiment

see Figure 5, where  $L$  is represented. The solution reads  $\mathbf{E}(\mathbf{x}) := (0, 0, \chi(r)r^\alpha \sin(\alpha\theta))^\top$ , where  $\alpha := 3/2$ ,  $r^2 := |\mathbf{x}_1|^2 + |\mathbf{x}_2|^2$ ,  $(\mathbf{x}_1, \mathbf{x}_2) = r(\cos\theta, \sin\theta)$ , and  $\chi : (0, 1) \rightarrow \mathbb{R}$  is a smooth cutoff function such that  $\chi = 0$  in a neighborhood of 1. We emphasize that  $\nabla \cdot \mathbf{E} = 0$  and that, since  $\Delta(r^\alpha \sin(\alpha\theta)) = 0$  near the origin, the right-hand side  $\mathbf{j}$  associated with  $\mathbf{E}$  belongs to  $\mathbf{H}(\text{div}, \Omega)$ .

We use an adaptive mesh-refinement strategy based on Dörfler's marking [20]. The initial mesh we employ for  $p = 0$  and  $p = 1$  consists of 294 elements and 1418 edges with  $h = 0.57$ , whereas a mesh with 23 elements, 86 edges, and  $h = 2$  is employed for  $p = 2$  and 3. The meshing package `MMG3D` is employed to generate the sequence of adapted meshes [19]. Figure 4 shows the convergence histories of the adaptive algorithm for different values of  $p$ . In the top-left panel, we observe the optimal convergence rate (limited to  $N_{\text{dofs}}^{2/3}$  for isotropic elements in the presence of an edge singularity). We employ the indicator  $\eta_{\text{cofree}}$

FIGURE 3.  $p$ -convergence for the unit cube experiment

defined in (4.1). The top-right and bottom-left panels respectively present the global and local efficiency indices. In both cases, the efficiency is good considering that the mesh is fully unstructured with localized features. We also emphasize that the efficiency does not deteriorate when  $p$  increases.

Finally, Figure 5 depicts the estimated and the actual errors at the last iteration of the adaptive algorithm. The face on the top of the domain  $\Omega$  is represented, and the colors are associated with the edges of the mesh. The left panels correspond to the values of the estimator  $\eta_e$  of (3.9), whereas the value of  $\|\nabla \times (\mathbf{E} - \mathbf{E}_h)\|_{\omega_e}$  is represented in the right panels. Overall, this figure shows excellent agreement between the estimated and actual error distribution.

## 5. PROOF OF THEOREM 3.2 ( $p$ -ROBUST A POSTERIORI ERROR ESTIMATE)

In this section, we prove Theorem 3.2.



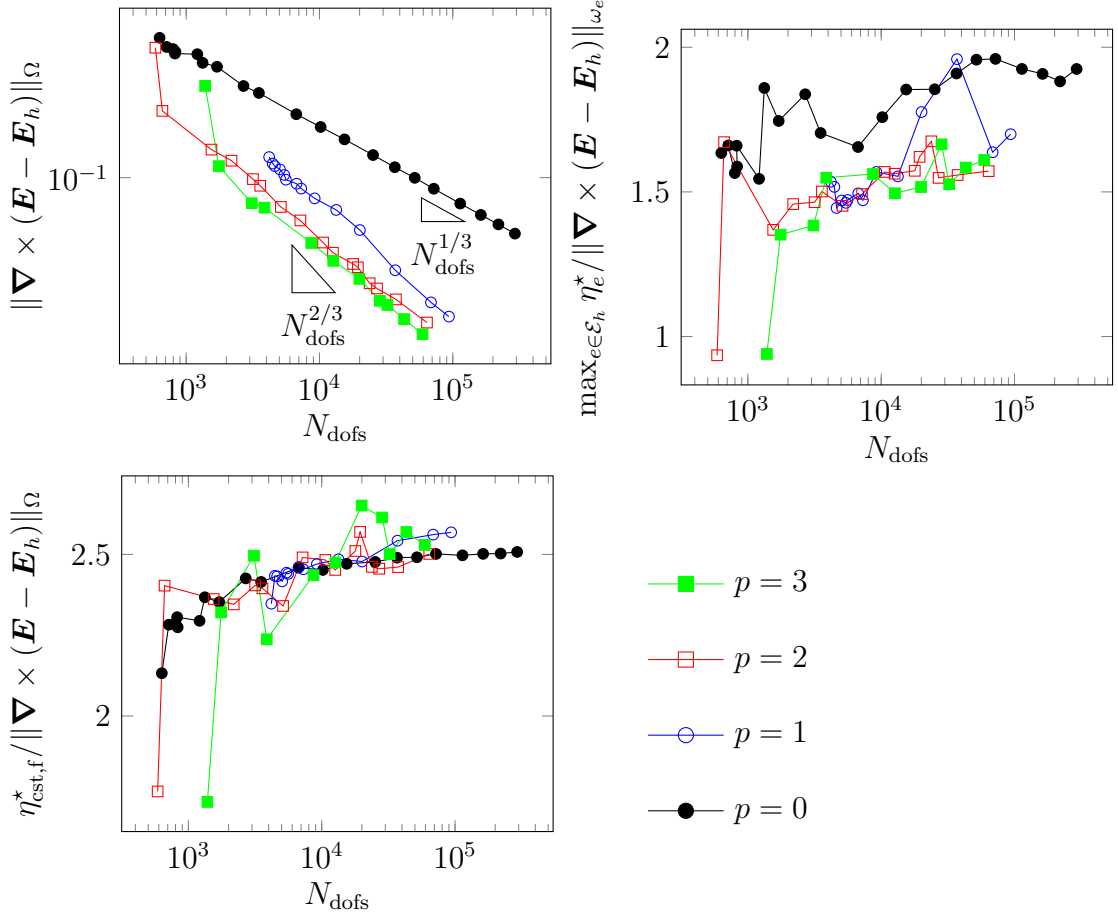


FIGURE 4. Convergence histories for the L shape experiment

5.1. **Residuals.** Recall that  $\mathbf{E}_h \in \mathbf{V}_h \subset \mathbf{H}_{\Gamma_D}(\mathbf{curl}, \Omega)$  solves (2.6) and satisfies (2.7). In view of the characterization of the weak solution (2.2), we define the residual  $\mathcal{R} \in (\mathbf{H}_{\Gamma_D}(\mathbf{curl}, \Omega))'$  by setting

$$\langle \mathcal{R}, \mathbf{v} \rangle := (\mathbf{j}, \mathbf{v})_\Omega - (\nabla \times \mathbf{E}_h, \nabla \times \mathbf{v})_\Omega = (\nabla \times (\mathbf{E} - \mathbf{E}_h), \nabla \times \mathbf{v})_\Omega \quad \forall \mathbf{v} \in \mathbf{H}_{\Gamma_D}(\mathbf{curl}, \Omega).$$

Taking  $\mathbf{v} = \mathbf{E} - \mathbf{E}_h$  and using a duality characterization, we have the error–residual link

$$(5.1) \quad \|\nabla \times (\mathbf{E} - \mathbf{E}_h)\|_\Omega = \langle \mathcal{R}, \mathbf{E} - \mathbf{E}_h \rangle^{1/2} = \sup_{\substack{\mathbf{v} \in \mathbf{H}_{\Gamma_D}(\mathbf{curl}, \Omega) \\ \|\nabla \times \mathbf{v}\|_\Omega = 1}} \langle \mathcal{R}, \mathbf{v} \rangle.$$

We will also employ local dual norms of the residual  $\mathcal{R}$ . Specifically, for each edge  $e \in \mathcal{E}_h$ , we set

$$(5.2) \quad \|\mathcal{R}\|_{*,e} := \sup_{\substack{\mathbf{v} \in \mathbf{H}_{\Gamma_D}^e(\mathbf{curl}, \omega_e) \\ \|\nabla \times \mathbf{v}\|_{\omega_e} = 1}} \langle \mathcal{R}, \mathbf{v} \rangle.$$

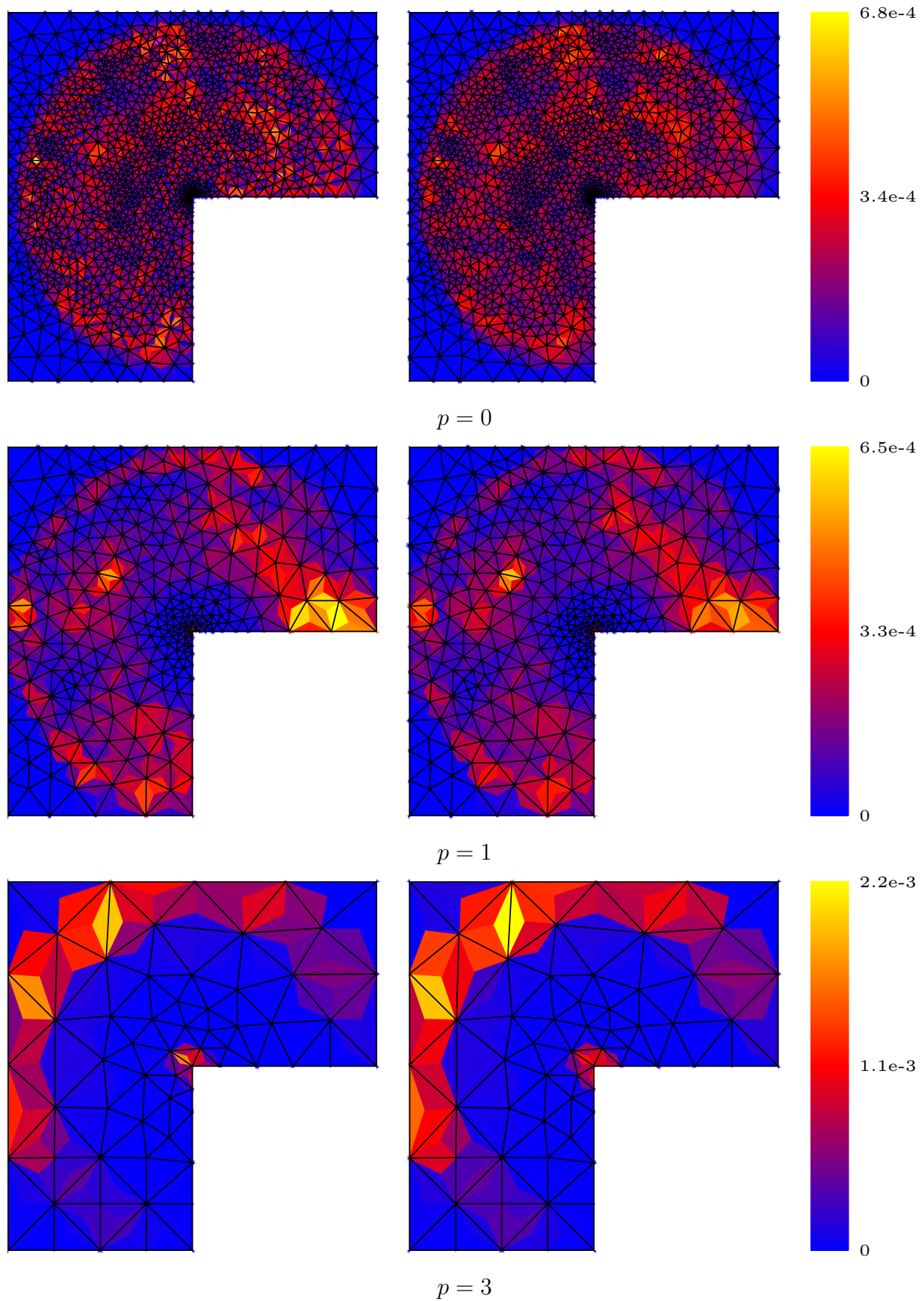


FIGURE 5. Estimated error (left) and actual error (right) in the L-shape experiment

For each  $e \in \mathcal{E}_h$ , we will also need an oscillation-free residual  $\mathcal{R}_h^e \in (\mathbf{H}_{\Gamma_D^e}(\text{curl}, \omega_e))'$  defined using the projected right-hand side introduced in (3.7),

$$\langle \mathcal{R}_h^e, \mathbf{v} \rangle := (\mathbf{j}_h^e, \mathbf{v})_{\omega_e} - (\nabla \times \mathbf{E}_h, \nabla \times \mathbf{v})_{\omega_e} \quad \forall \mathbf{v} \in \mathbf{H}_{\Gamma_D^e}(\text{curl}, \omega_e).$$

We also employ the notation

$$\|\mathcal{R}_h^e\|_{*,e} := \sup_{\substack{\mathbf{v} \in \mathbf{H}_{\Gamma_D^e}(\text{curl}, \omega_e) \\ \|\nabla \times \mathbf{v}\|_{\omega_e} = 1}} \langle \mathcal{R}_h^e, \mathbf{v} \rangle$$

for the dual norm of  $\mathcal{R}_h^e$ . Note that  $\mathcal{R}_h^e = \mathcal{R}|_{\mathbf{H}_{\Gamma_D^e}(\text{curl}, \omega_e)}$  whenever the source term  $\mathbf{j}$  is a piecewise  $\mathcal{RT}_p(\mathcal{T}_h)$  polynomial.

**5.2. Data oscillation.** Recalling the definition (3.8) of  $\text{osc}_e$ , we have the following comparison:

**Lemma 5.1** (Data oscillation). *The following holds true:*

$$(5.3a) \quad \|\mathcal{R}_h^e\|_{*,e} \leq \|\mathcal{R}\|_{*,e} + \text{osc}_e$$

and

$$(5.3b) \quad \|\mathcal{R}\|_{*,e} \leq \|\mathcal{R}_h^e\|_{*,e} + \text{osc}_e.$$

*Proof.* Let  $\mathbf{v} \in \mathbf{H}_{\Gamma_D^e}(\text{curl}, \omega_e)$  with  $\|\nabla \times \mathbf{v}\|_{\omega_e} = 1$  be fixed. We have

$$\langle \mathcal{R}_h^e, \mathbf{v} \rangle = \langle \mathcal{R}, \mathbf{v} \rangle - (\mathbf{j} - \mathbf{j}_h^e, \mathbf{v})_{\omega_e}.$$

We define  $q$  as the unique element of  $H_{\Gamma_D^e}^1(\omega_e)$  such that

$$(\nabla q, \nabla w) = (\mathbf{v}, \nabla w) \quad \forall w \in H_{\Gamma_D^e}^1(\omega_e),$$

and set  $\tilde{\mathbf{v}} := \mathbf{v} - \nabla q$ . Since  $\nabla \cdot \mathbf{j} = \nabla \cdot \mathbf{j}_h^e = 0$  and  $\mathbf{j} - \mathbf{j}_h^e \in \mathbf{H}_{\Gamma_N^e}(\text{div}, \omega_e)$ , we have  $(\mathbf{j} - \mathbf{j}_h^e, \nabla q)_{\omega_e} = 0$ , and it follows that

$$\langle \mathcal{R}_h^e, \mathbf{v} \rangle = \langle \mathcal{R}, \mathbf{v} \rangle - (\mathbf{j} - \mathbf{j}_h^e, \tilde{\mathbf{v}})_{\omega_e} \leq \|\mathcal{R}\|_{*,e} + \|\mathbf{j} - \mathbf{j}_h^e\|_{\omega_e} \|\tilde{\mathbf{v}}\|_{\omega_e}.$$

Since  $\tilde{\mathbf{v}} \in \mathbf{H}_{\Gamma_D^e}(\text{curl}, \omega_e) \cap \mathbf{H}_{\Gamma_N^e}(\text{div}, \omega_e)$  with  $\nabla \cdot \tilde{\mathbf{v}} = 0$  in  $\omega_e$ , recalling (3.4), we have

$$\|\tilde{\mathbf{v}}\|_{\omega_e} \leq C_{W,e} h_{\omega_e} \|\nabla \times \tilde{\mathbf{v}}\|_{\omega_e} = C_{W,e} h_{\omega_e} \|\nabla \times \mathbf{v}\|_{\omega_e} = C_{W,e} h_{\omega_e},$$

and we obtain (5.3a) by taking the supremum over all  $\mathbf{v}$ . The proof of (5.3b) follows exactly the same path.  $\square$

**5.3. Partition of unity and cut-off estimates.** We now analyze a partition of unity for vector-valued functions that we later employ to localize the error onto edge patches. Recalling the notation  $\boldsymbol{\tau}_e$  for the unit tangent vector orienting  $e$ , we quote the following classical partition of unity [22, Chapter 15]:

**Lemma 5.2** (Vectorial partition of unity). *Let  $\mathbb{I}$  be the identity matrix in  $\mathbb{R}^{3 \times 3}$ . The edge basis functions  $\boldsymbol{\psi}_e$  from (3.12) satisfy*

$$\sum_{e \in \mathcal{E}_h} \boldsymbol{\tau}_e \otimes \boldsymbol{\psi}_e = \sum_{e \in \mathcal{E}_h} \boldsymbol{\psi}_e \otimes \boldsymbol{\tau}_e = \mathbb{I},$$

where  $\otimes$  denotes the outer product, so that we have

$$(5.4) \quad \mathbf{w} = \sum_{e \in \mathcal{E}_h} (\mathbf{w} \cdot \boldsymbol{\tau}_e)|_{\omega_e} \boldsymbol{\psi}_e \quad \forall \mathbf{w} \in \mathbf{L}^2(\Omega).$$

**Lemma 5.3** (Cut-off stability). *For every edge  $e \in \mathcal{E}_h$ , recalling the space  $H_\star^1(\omega_e)$  defined in (3.2) and the constant  $C_{\text{cont},e}$  defined in (3.13), we have*

$$(5.5) \quad \|\nabla \times (v\boldsymbol{\psi}_e)\|_{\omega_e} \leq C_{\text{cont},e} \|\nabla v\|_{\omega_e} \quad \forall v \in H_\star^1(\omega_e).$$

Moreover the upper bound (3.14) on  $C_{\text{cont},e}$  holds true.

*Proof.* Let an edge  $e \in \mathcal{E}_h$  and  $v \in H_\star^1(\omega_e)$  be fixed. Since  $\nabla \times (v\boldsymbol{\psi}_e) = v\nabla \times \boldsymbol{\psi}_e + \nabla v \times \boldsymbol{\psi}_e$ , we have, using (3.3),

$$\begin{aligned} \|\nabla \times (v\boldsymbol{\psi}_e)\|_{\omega_e} &\leq \|\nabla \times \boldsymbol{\psi}_e\|_{\infty, \omega_e} \|v\|_{\omega_e} + \|\boldsymbol{\psi}_e\|_{\infty, \omega_e} \|\nabla v\|_{\omega_e} \\ &\leq (\|\nabla \times \boldsymbol{\psi}_e\|_{\infty, \omega_e} C_{\text{P},e} h_{\omega_e} + \|\boldsymbol{\psi}_e\|_{\infty, \omega_e}) \|\nabla v\|_{\omega_e} \\ &= C_{\text{cont},e} \|\nabla v\|_{\omega_e}. \end{aligned}$$

This proves (5.5). To prove (3.14), we remark that in every tetrahedron  $K \in \mathcal{T}^e$ , we have (see for instance [33, Section 5.5.1], [22, Chapter 15])

$$\boldsymbol{\psi}_e|_K = |e|(\lambda_1 \nabla \lambda_2 - \lambda_2 \nabla \lambda_1), \quad (\nabla \times \boldsymbol{\psi}_e)|_K = 2|e| \nabla \lambda_1 \times \nabla \lambda_2,$$

where  $\lambda_1$  and  $\lambda_2$  are the barycentric coordinates of  $K$  associated with the two endpoints of  $e$  such that  $\boldsymbol{\tau}_e$  points from the first to the second vertex. Since  $\|\lambda_j\|_{\infty, K} = 1$  and  $\|\nabla \lambda_j\|_{\infty, K} \leq \rho_K^{-1}$ , we have

$$\|\boldsymbol{\psi}_e\|_{\infty, K} \leq \frac{2}{\rho_K} |e|, \quad \|\nabla \times \boldsymbol{\psi}_e\|_{\infty, K} \leq \frac{2}{\rho_K^2} |e|$$

for every  $K \in \mathcal{T}^e$ . Recalling the definition (2.3) of  $\rho_e$ , which implies that  $\rho_e \leq \rho_K$ , as well as the definition  $\kappa_e$  in (2.4), we conclude that

$$C_{\text{cont},e} = \|\boldsymbol{\psi}_e\|_{\infty, \omega_e} + C_{\text{P},e} h_{\omega_e} \|\nabla \times \boldsymbol{\psi}_e\|_{\infty, \omega_e} \leq \frac{2|e|}{\rho_e} \left( 1 + C_{\text{P},e} \frac{h_{\omega_e}}{\rho_e} \right) = C_{\kappa_e}.$$

□

**5.4. Upper bound using localized residual dual norms.** We now establish an upper bound on the error using the localized residual dual norms  $\|\mathcal{R}_h^e\|_{\star, e}$ , in the spirit of [3], [23, Chapter 34], and the references therein.

**Proposition 5.4** (Upper bound by localized residual dual norms). *Let  $C_{\text{cont},e}$  and  $C_L$  be defined in (3.13) and (3.6), respectively. Then the following holds:*

$$(5.6) \quad \|\nabla \times (\mathbf{E} - \mathbf{E}_h)\|_\Omega \leq \sqrt{6}C_L \left( \sum_{e \in \mathcal{E}_h} C_{\text{cont},e}^2 (\|\mathcal{R}_h^e\|_{\star,e} + \text{osc}_e)^2 \right)^{1/2}.$$

*Proof.* We start with (5.1). Let  $\mathbf{v} \in \mathbf{H}_{\Gamma_D}(\text{curl}, \Omega)$  with  $\|\nabla \times \mathbf{v}\|_\Omega = 1$  be fixed. Following (3.6), we define  $\mathbf{w} \in \mathbf{H}^1(\Omega) \cap \mathbf{H}_{\Gamma_D}(\text{curl}, \Omega)$  such that  $\nabla \times \mathbf{w} = \nabla \times \mathbf{v}$  with

$$(5.7) \quad \|\nabla \mathbf{w}\|_\Omega \leq C_L \|\nabla \times \mathbf{v}\|_\Omega.$$

As a consequence of (2.2) and (2.7), the residual  $\mathcal{R}$  is (in particular) orthogonal to  $\mathcal{N}_0(\mathcal{T}_h) \cap \mathbf{H}_{\Gamma_D}(\text{curl}, \Omega)$ . Thus, by employing the partition of unity (5.4), we have

$$\langle \mathcal{R}, \mathbf{v} \rangle = \langle \mathcal{R}, \mathbf{w} \rangle = \sum_{e \in \mathcal{E}_h} \langle \mathcal{R}, (\mathbf{w} \cdot \boldsymbol{\tau}_e)|_{\omega_e} \psi_e \rangle = \sum_{e \in \mathcal{E}_h} \langle \mathcal{R}, (\mathbf{w} \cdot \boldsymbol{\tau}_e - \bar{w}_e)|_{\omega_e} \psi_e \rangle,$$

where  $\bar{w}_e := 0$  if  $e \in \mathcal{E}_h^D$  and

$$\bar{w}_e := \frac{1}{|\omega_e|} \int_{\omega_e} \mathbf{w} \cdot \boldsymbol{\tau}_e$$

otherwise. Since  $(\mathbf{w} \cdot \boldsymbol{\tau}_e - \bar{w}_e)\psi_e \in \mathbf{H}_{\Gamma_D^e}(\text{curl}, \omega_e)$  for all  $e \in \mathcal{E}_h$ , we have from (5.2)

$$\langle \mathcal{R}, \mathbf{v} \rangle \leq \sum_{e \in \mathcal{E}_h} \|\mathcal{R}\|_{\star,e} \|\nabla \times ((\mathbf{w} \cdot \boldsymbol{\tau}_e - \bar{w}_e)\psi_e)\|_{\omega_e}.$$

We observe that  $\mathbf{w} \cdot \boldsymbol{\tau}_e - \bar{w}_e \in H_\star^1(\omega_e)$  for all  $e \in \mathcal{E}_h$  and that

$$\|\nabla(\mathbf{w} \cdot \boldsymbol{\tau}_e - \bar{w}_e)\|_{\omega_e} = \|\nabla(\mathbf{w} \cdot \boldsymbol{\tau}_e)\|_{\omega_e} \leq \|\nabla \mathbf{w}\|_{\omega_e}.$$

As a result, (5.5) shows that

$$\langle \mathcal{R}, \mathbf{v} \rangle \leq \sum_{e \in \mathcal{E}_h} C_{\text{cont},e} \|\mathcal{R}\|_{\star,e} \|\nabla \mathbf{w}\|_{\omega_e} \leq \left( \sum_{e \in \mathcal{E}_h} C_{\text{cont},e}^2 \|\mathcal{R}\|_{\star,e}^2 \right)^{1/2} \left( \sum_{e \in \mathcal{E}_h} \|\nabla \mathbf{w}\|_{\omega_e}^2 \right)^{1/2}.$$

At this point, as each tetrahedron  $K \in \mathcal{T}_h$  has 6 edges, we have

$$\sum_{e \in \mathcal{E}_h} \|\nabla \mathbf{w}\|_{\omega_e}^2 \leq 6 \|\nabla \mathbf{w}\|_\Omega^2,$$

and using (5.7), we infer that

$$\langle \mathcal{R}, \mathbf{v} \rangle \leq \sqrt{6}C_L \left( \sum_{e \in \mathcal{E}_h} C_{\text{cont},e}^2 \|\mathcal{R}\|_{\star,e}^2 \right)^{1/2} \|\nabla \times \mathbf{v}\|_\Omega.$$

Then, we conclude with (5.3b). □

**5.5. Lower bound using localized residual dual norms.** We now consider the derivation of local lower bounds on the error using the residual dual norms. We first establish a result for the residual  $\mathcal{R}$ .

**Lemma 5.5** (Local residual). *For every edge  $e \in \mathcal{E}_h$ , the following holds:*

$$(5.8) \quad \|\mathcal{R}\|_{*,e} = \min_{\substack{\mathbf{h} \in \mathbf{H}_{\Gamma_{\mathbb{N}}^e}(\text{curl}, \omega_e) \\ \nabla \times \mathbf{h} = \mathbf{j}}} \|\mathbf{h} - \nabla \times \mathbf{E}_h\|_{\omega_e},$$

as well as

$$(5.9) \quad \|\mathcal{R}\|_{*,e} \leq \|\nabla \times (\mathbf{E} - \mathbf{E}_h)\|_{\omega_e}.$$

*Proof.* Let us define  $\mathbf{h}^*$  as the unique element of  $\mathbf{L}^2(\omega_e)$  such that

$$(5.10) \quad \begin{cases} \nabla \cdot \mathbf{h}^* = 0 & \text{in } \omega_e, \\ \nabla \times \mathbf{h}^* = \mathbf{j} & \text{in } \omega_e, \\ \mathbf{h}^* \cdot \mathbf{n} = \nabla \times \mathbf{E}_h \cdot \mathbf{n} & \text{on } \Gamma_{\mathbb{D}}^e, \\ \mathbf{h}^* \times \mathbf{n} = \mathbf{0} & \text{on } \Gamma_{\mathbb{N}}^e. \end{cases}$$

The existence and uniqueness of  $\mathbf{h}^*$  follows from [26, Proposition 7.4] after lifting by  $\nabla \times \mathbf{E}_h$ .

The second and fourth equations in (5.10) imply that  $\mathbf{h}^*$  belongs to the minimization set of (5.8). If  $\mathbf{h}' \in \mathbf{H}_{\Gamma_{\mathbb{N}}^e}(\text{curl}, \omega_e)$  with  $\nabla \times \mathbf{h}' = \mathbf{j}$  is another element of the minimization set, then  $\mathbf{h}^* - \mathbf{h}' = \nabla q$  for some  $q \in H_{\Gamma_{\mathbb{N}}^e}^1(\omega_e)$ , and we see that

$$\begin{aligned} \|\mathbf{h}' - \nabla \times \mathbf{E}_h\|_{\omega_e}^2 &= \|\mathbf{h}^* - \nabla \times \mathbf{E}_h - \nabla q\|_{\omega_e}^2 \\ &= \|\mathbf{h}^* - \nabla \times \mathbf{E}_h\|_{\omega_e}^2 - 2(\mathbf{h}^* - \nabla \times \mathbf{E}_h, \nabla q)_{\omega_e} + \|\nabla q\|_{\omega_e}^2 \\ &= \|\mathbf{h}^* - \nabla \times \mathbf{E}_h\|_{\omega_e}^2 + \|\nabla q\|_{\omega_e}^2 \\ &\geq \|\mathbf{h}^* - \nabla \times \mathbf{E}_h\|_{\omega_e}^2, \end{aligned}$$

where we used that  $\mathbf{h}^*$  is divergence-free,  $(\mathbf{h}^* - \nabla \times \mathbf{E}_h) \cdot \mathbf{n} = \mathbf{0}$  on  $\Gamma_{\mathbb{D}}^e$ , and  $q = 0$  on  $\Gamma_{\mathbb{N}}^e$  to infer that  $(\mathbf{h}^* - \nabla \times \mathbf{E}_h, \nabla q)_{\omega_e} = 0$ . Hence  $\mathbf{h}^*$  is a minimizer of (5.8).

Let  $\mathbf{v} \in \mathbf{H}_{\Gamma_{\mathbb{D}}^e}(\text{curl}, \omega_e)$ . Since  $(\nabla \times \mathbf{h}^*, \mathbf{v})_{\omega_e} = (\mathbf{h}^*, \nabla \times \mathbf{v})_{\omega_e}$ , we have

$$\begin{aligned} \langle \mathcal{R}, \mathbf{v} \rangle &= (\mathbf{j}, \mathbf{v})_{\omega_e} - (\nabla \times \mathbf{E}_h, \nabla \times \mathbf{v})_{\omega_e} \\ &= (\nabla \times \mathbf{h}^*, \mathbf{v})_{\omega_e} - (\nabla \times \mathbf{E}_h, \nabla \times \mathbf{v})_{\omega_e} \\ &= (\mathbf{h}^*, \nabla \times \mathbf{v})_{\omega_e} - (\nabla \times \mathbf{E}_h, \nabla \times \mathbf{v})_{\omega_e} \\ &= (\phi, \nabla \times \mathbf{v})_{\omega_e}, \end{aligned}$$

where we have set  $\phi := \mathbf{h}^* - \nabla \times \mathbf{E}_h$ . As above,  $\nabla \cdot \phi = 0$  in  $\omega_e$  and  $\phi \cdot \mathbf{n} = 0$  on  $\Gamma_{\mathbb{D}}^e$ . Therefore, Theorem 8.1 of [26] shows that  $\phi = \nabla \times \omega$  for some  $\omega \in \mathbf{H}_{\Gamma_{\mathbb{D}}^e}(\text{curl}, \omega_e)$ , and

$$\langle \mathcal{R}, \mathbf{v} \rangle = (\nabla \times \omega, \nabla \times \mathbf{v})_{\omega_e} \quad \forall \mathbf{v} \in \mathbf{H}_{\Gamma_{\mathbb{D}}^e}(\text{curl}, \omega_e).$$

At this point, it is clear that

$$\|\mathcal{R}\|_{*,e} = \sup_{\substack{\mathbf{v} \in \mathbf{H}_{\Gamma_{\mathbb{D}}^e}(\text{curl}, \omega_e) \\ \|\nabla \times \mathbf{v}\|_{\omega_e} = 1}} (\nabla \times \omega, \nabla \times \mathbf{v})_{\omega_e} = \|\nabla \times \omega\|_{\omega_e} = \|\mathbf{h}^* - \nabla \times \mathbf{E}_h\|_{\omega_e}.$$

Finally, we obtain (5.9) by observing that  $\tilde{\mathbf{h}} := (\nabla \times \mathbf{E})|_{\omega_e}$  is in the minimization set of (5.8).  $\square$

We are now ready to state our results for the oscillation-free residuals  $\mathcal{R}_h^e$ .

**Lemma 5.6** (Local oscillation-free residual). *For every edge  $e \in \mathcal{E}_h$ , the following holds:*

$$(5.11) \quad \|\mathcal{R}_h^e\|_{*,e} = \min_{\substack{\mathbf{h} \in \mathbf{H}_{\Gamma_N^e}(\text{curl}, \omega_e) \\ \nabla \times \mathbf{h} = \mathbf{j}_h^e}} \|\mathbf{h} - \nabla \times \mathbf{E}_h\|_{\omega_e},$$

as well as

$$(5.12) \quad \|\mathcal{R}_h^e\|_{*,e} \leq \|\nabla \times (\mathbf{E} - \mathbf{E}_h)\|_{\omega_e} + \text{osc}_e.$$

*Proof.* We establish (5.11) by following the same path as for (5.8). On the other hand, we simply obtain (5.12) as a consequence of (5.3a) and (5.9).  $\square$

**5.6. Proof of Theorem 3.2.** We are now ready to give a proof of Theorem 3.2.

On the one hand, the quasi-equilibration estimator  $\eta_e$  defined in (3.9) is evaluated from a field  $\mathbf{h}_h^{e,*} \in \mathcal{N}_p(\mathcal{T}^e) \cap \mathbf{H}_{\Gamma_N^e}(\text{curl}, \omega_e)$  such that  $\nabla \times \mathbf{h}_h^{e,*} = \mathbf{j}_h^e$ , and the sequential sweep (3.11) produces  $\mathbf{h}_h^{e,\heartsuit}$  also satisfying these two properties. Since the minimization set in (5.11) is larger, it is clear that

$$\|\mathcal{R}_h^e\|_{*,e} \leq \eta_e$$

for both estimators  $\eta_e$ . Then, (3.15) immediately follows from (5.6).

On the other hand, Theorem 3.1 with the choice  $\boldsymbol{\chi}_h := (\nabla \times \mathbf{E}_h)|_{\omega_e}$  and the polynomial degree  $p$  together with (5.11) of Lemma 5.6 implies that

$$\eta_e \leq C_{\text{st},e} \|\mathcal{R}_h^e\|_{*,e}$$

for the estimator (3.9), whereas  $\mathbf{h}_h^{e,\heartsuit}$  from (3.11) is actually the element realising the inequality in (3.1), see the constructive proof of Proposition 6.6 below. Therefore, (3.16) is a direct consequence of (5.12).

## 6. EQUIVALENT REFORMULATION AND PROOF OF THEOREM 3.1 ( $\mathbf{H}(\text{curl})$ BEST-APPROXIMATION ON AN EDGE PATCH)

In this section, we consider the minimization problem over edge patches posed in the statement of Theorem 3.1, which was a central tool to establish the efficiency of the quasi-equilibrated estimators in Theorem 3.2. This minimization problem is similar to the ones considered in [5, 24, 25] in the framework of  $H^1$  and  $\mathbf{H}(\text{div})$  spaces. We prove here Theorem 3.1 via its equivalence with a stable broken  $\mathbf{H}(\text{curl})$  polynomial extension on edge patch formulated in Proposition 6.6 below.

### 6.1. Stability of discrete minimization in a tetrahedron.



6.1.1. *Preliminaries.* We first recall some necessary notation from [7]. Consider an arbitrary mesh face  $F \in \mathcal{F}_h$  oriented by the fixed unit vector normal  $\mathbf{n}_F$ . For all  $\mathbf{w} \in \mathbf{L}^2(F)$ , we define the tangential component of  $\mathbf{w}$  as

$$(6.1) \quad \boldsymbol{\pi}_F^\tau(\mathbf{w}) := \mathbf{w} - (\mathbf{w} \cdot \mathbf{n}_F)\mathbf{n}_F.$$

Notice that the orientation of  $\mathbf{n}_F$  is not important here. Let  $K \in \mathcal{T}_h$  and let  $\mathcal{F}_K$  be the collection of the faces of  $K$ . For all  $\mathbf{v} \in \mathbf{H}^1(K)$  and all  $F \in \mathcal{F}_K$ , the tangential trace of  $\mathbf{v}$  on  $F$  is defined (with a slight abuse of notation) as  $\boldsymbol{\pi}_F^\tau(\mathbf{v}) := \boldsymbol{\pi}_F^\tau(\mathbf{v}|_F)$ .

Consider now a nonempty subset  $\mathcal{F} \subseteq \mathcal{F}_K$ . We denote  $\Gamma_{\mathcal{F}} \subset \partial K$  the corresponding part of the boundary of  $K$ . Let  $p \geq 0$  be the polynomial degree and recall that  $\mathcal{N}_p(K)$  is the Nédélec space on the tetrahedron  $K$ , see (2.5). We define the piecewise polynomial space on  $\Gamma_{\mathcal{F}}$

$$(6.2) \quad \mathcal{N}_p^\tau(\Gamma_{\mathcal{F}}) := \{ \mathbf{w}_{\mathcal{F}} \in \mathbf{L}^2(\Gamma_{\mathcal{F}}) \mid \exists \mathbf{v}_p \in \mathcal{N}_p(K); \mathbf{w}_F := (\mathbf{w}_{\mathcal{F}})|_F = \boldsymbol{\pi}_F^\tau(\mathbf{v}_p) \quad \forall F \in \mathcal{F} \}.$$

Note that  $\mathbf{w}_{\mathcal{F}} \in \mathcal{N}_p^\tau(\Gamma_{\mathcal{F}})$  if and only if  $\mathbf{w}_F \in \mathcal{N}_p^\tau(\Gamma_{\{F\}})$  for all  $F \in \mathcal{F}$  and whenever  $|\mathcal{F}| \geq 2$ , for every pair  $(F_-, F_+)$  of distinct faces in  $\mathcal{F}$ , the following tangential trace compatibility condition holds true along their common edge  $e := F_+ \cap F_-$ :

$$(6.3) \quad (\mathbf{w}_{F_+})|_e \cdot \boldsymbol{\tau}_e = (\mathbf{w}_{F_-})|_e \cdot \boldsymbol{\tau}_e.$$

For all  $\mathbf{w}_{\mathcal{F}} \in \mathcal{N}_p^\tau(\Gamma_{\mathcal{F}})$ , we set

$$(6.4) \quad \text{curl}_F(\mathbf{w}_F) := (\boldsymbol{\nabla} \times \mathbf{v}_p)|_F \cdot \mathbf{n}_F \quad \forall F \in \mathcal{F},$$

which is well-defined independently of the choice of  $\mathbf{v}_p$ . Notice that the orientation of  $\mathbf{n}_F$  is relevant here.

Definition (6.1) of the tangential trace cannot be applied to fields with the minimal regularity  $\mathbf{v} \in \mathbf{H}(\text{curl}, K)$ . In what follows, we use the following notion to prescribe the tangential trace of a field in  $\mathbf{H}(\text{curl}, K)$ .

**Definition 6.1** (Tangential trace by integration by parts in a single tetrahedron). *Let  $K$  be a tetrahedron and  $\mathcal{F} \subseteq \mathcal{F}_K$  a nonempty (sub)set of its faces. Given  $\mathbf{r}_{\mathcal{F}} \in \mathcal{N}_p^\tau(\Gamma_{\mathcal{F}})$  and  $\mathbf{v} \in \mathbf{H}(\text{curl}, K)$ , we employ the notation “ $\mathbf{v}|_{\mathcal{F}}^\tau = \mathbf{r}_{\mathcal{F}}$ ” to say that*

$$(\boldsymbol{\nabla} \times \mathbf{v}, \boldsymbol{\phi})_K - (\mathbf{v}, \boldsymbol{\nabla} \times \boldsymbol{\phi})_K = \sum_{F \in \mathcal{F}} (\mathbf{r}_F, \boldsymbol{\phi} \times \mathbf{n}_K)_F \quad \forall \boldsymbol{\phi} \in \mathbf{H}_{\tau, \mathcal{F}^c}^1(K),$$

where

$$\mathbf{H}_{\tau, \mathcal{F}^c}^1(K) := \{ \boldsymbol{\phi} \in \mathbf{H}^1(K) \mid \boldsymbol{\phi}|_F \times \mathbf{n} = \mathbf{0} \quad \forall F \in \mathcal{F}^c := \mathcal{F}_K \setminus \mathcal{F} \}.$$

Whenever  $\mathbf{v} \in \mathbf{H}^1(K)$ ,  $\mathbf{v}|_{\mathcal{F}}^\tau = \mathbf{r}_{\mathcal{F}}$  if and only if  $\boldsymbol{\pi}_F^\tau(\mathbf{v}) = \mathbf{r}_F$  for all  $F \in \mathcal{F}$ .

6.1.2. *Statement of the stability result in a tetrahedron.* Recall the Raviart–Thomas space  $\mathcal{RT}_p(K)$  on the simplex  $K$ , see (2.5). We are now ready to state a key technical tool from [7, Theorem 2], based on [16, Theorem 7.2] and [10, Proposition 4.2].

**Proposition 6.2** (Stable  $\mathbf{H}(\text{curl})$  polynomial extension on a tetrahedron). *Let  $K$  be a tetrahedron and let  $\emptyset \subseteq \mathcal{F} \subseteq \mathcal{F}_K$  be a (sub)set of its faces. Then, for every polynomial degree*

$p \geq 0$ , for all  $\mathbf{r}_K \in \mathcal{RT}_p(K)$  such that  $\nabla \cdot \mathbf{r}_K = 0$ , and if  $\mathcal{F} \neq \emptyset$ , for all  $\mathbf{r}_F \in \mathcal{N}_p^\tau(\Gamma_F)$  such that  $\mathbf{r}_K \cdot \mathbf{n}_F = \text{curl}_F(\mathbf{r}_F)$  for all  $F \in \mathcal{F}$ , the following holds:

$$(6.5) \quad \min_{\substack{\mathbf{v}_p \in \mathcal{N}_p(K) \\ \nabla \times \mathbf{v}_p = \mathbf{r}_K \\ \mathbf{v}_p|_{\mathcal{F}} = \mathbf{r}_F}} \|\mathbf{v}_p\|_K \leq C_{\text{st},K} \min_{\substack{\mathbf{v} \in \mathbf{H}(\text{curl},K) \\ \nabla \times \mathbf{v} = \mathbf{r}_K \\ \mathbf{v}|_{\mathcal{F}} = \mathbf{r}_F}} \|\mathbf{v}\|_K,$$

where the condition on the tangential trace in the minimizing sets is null if  $\emptyset = \mathcal{F}$ . Both minimizers in (6.5) are uniquely defined and the constant  $C_{\text{st},K}$  only depends on the shape-regularity parameter  $\kappa_K$  of  $K$ .

**6.2. Piola mappings.** This short section reviews some useful properties of Piola mappings used below, see [22, Chapter 9]. Consider two tetrahedra  $K_{\text{in}}, K_{\text{out}} \subset \mathbb{R}^3$  and an invertible affine mapping  $\mathbf{T} : \mathbb{R}^3 \rightarrow \mathbb{R}^3$  such that  $K_{\text{out}} = \mathbf{T}(K_{\text{in}})$ . Let  $\mathbb{J}_{\mathbf{T}}$  be the (constant) Jacobian matrix of  $\mathbf{T}$ . Note that we do not require that  $\det \mathbb{J}_{\mathbf{T}}$  is positive. The affine mapping  $\mathbf{T}$  can be identified by specifying the image of each vertex of  $K_{\text{in}}$ . We consider the covariant and contravariant Piola mappings

$$\psi_{\mathbf{T}}^c(\mathbf{v}) = (\mathbb{J}_{\mathbf{T}})^{-T} (\mathbf{v} \circ \mathbf{T}^{-1}), \quad \psi_{\mathbf{T}}^d(\mathbf{v}) = \frac{1}{\det(\mathbb{J}_{\mathbf{T}})} \mathbb{J}_{\mathbf{T}}(\mathbf{v} \circ \mathbf{T}^{-1})$$

for vector-valued fields  $\mathbf{v} : K_{\text{in}} \rightarrow \mathbb{R}^3$ . It is well-known that  $\psi_{\mathbf{T}}^c$  maps  $\mathbf{H}(\text{curl}, K_{\text{in}})$  onto  $\mathbf{H}(\text{curl}, K_{\text{out}})$  and it maps  $\mathcal{N}_p(K_{\text{in}})$  onto  $\mathcal{N}_p(K_{\text{out}})$  for any polynomial degree  $p \geq 0$ . Similarly  $\psi_{\mathbf{T}}^d$  maps  $\mathbf{H}(\text{div}, K_{\text{in}})$  onto  $\mathbf{H}(\text{div}, K_{\text{out}})$  and it maps  $\mathcal{RT}_p(K_{\text{in}})$  onto  $\mathcal{RT}_p(K_{\text{out}})$ . Moreover the Piola mappings  $\psi_{\mathbf{T}}^c$  and  $\psi_{\mathbf{T}}^d$  commute with the curl operator in the sense that

$$(6.6) \quad \nabla \times (\psi_{\mathbf{T}}^c(\mathbf{v})) = \psi_{\mathbf{T}}^d(\nabla \times \mathbf{v}) \quad \forall \mathbf{v} \in \mathbf{H}(\text{curl}, K_{\text{in}}).$$

In addition, we have

$$(6.7) \quad (\psi_{\mathbf{T}}^c(\mathbf{v}_{\text{in}}), \mathbf{v}_{\text{out}})_{K_{\text{out}}} = \text{sign}(\det \mathbb{J}_{\mathbf{T}}) (\mathbf{v}_{\text{in}}, (\psi_{\mathbf{T}}^d)^{-1}(\mathbf{v}_{\text{out}}))_{K_{\text{in}}},$$

for all  $\mathbf{v}_{\text{in}} \in \mathbf{H}(\text{curl}, K_{\text{in}})$  and  $\mathbf{v}_{\text{out}} \in \mathbf{H}(\text{curl}, K_{\text{out}})$ . We also have  $\|\psi_{\mathbf{T}}^c(\mathbf{v})\|_{K_{\text{out}}} \leq \frac{h_{K_{\text{in}}}}{\rho_{K_{\text{out}}}} \|\mathbf{v}\|_{K_{\text{in}}}$  for all  $\mathbf{v} \in \mathbf{L}^2(K_{\text{in}})$ , so that whenever  $K_{\text{in}}, K_{\text{out}}$  belong to the same edge patch  $\mathcal{T}^e$ , we have

$$(6.8) \quad \|\psi_{\mathbf{T}}^c(\mathbf{v})\|_{K_{\text{out}}} \leq C \|\mathbf{v}\|_{K_{\text{in}}} \quad \forall \mathbf{v} \in \mathbf{L}^2(K_{\text{in}}),$$

for a constant  $C$  only depending on the shape regularity  $\kappa_e$  of the patch  $\mathcal{T}^e$  defined in (2.4).

### 6.3. Stability of discrete minimization in an edge patch.

**6.3.1. Preliminaries.** In this section, we consider an edge patch  $\mathcal{T}^e$  associated with a mesh edge  $e \in \mathcal{E}_h$  consisting of tetrahedral elements  $K$  sharing the edge  $e$ , cf. Figure 1. We denote by  $n := |\mathcal{T}^e|$  the number of tetrahedra in the patch, by  $\mathcal{F}^e$  the set of all faces of the patch, by  $\mathcal{F}_{\text{int}}^e \subset \mathcal{F}^e$  the set of ‘‘internal’’ faces, i.e., those being shared by two different tetrahedra from the patch, and finally, by  $\mathcal{F}_{\text{ext}}^e := \mathcal{F}^e \setminus \mathcal{F}_{\text{int}}^e$  the set of ‘‘external’’ faces. The patch is either of ‘‘interior’’ type, corresponding to an edge in the interior of the domain  $\Omega$ , in which case there is a full loop around  $e$ , see Figure 1, left, or of ‘‘boundary’’ type,

corresponding to an edge on the boundary of the domain  $\Omega$ , in which case there is no full loop around  $e$ , see Figure 1, right, and Figure 6. We further distinguish three types of patches of boundary type depending on the status of the two boundary faces sharing the associated boundary edge: the patch is of Dirichlet boundary type if both faces lie in  $\overline{\Gamma_D}$ , of “mixed boundary” type if one face lies in  $\overline{\Gamma_D}$  and the other in  $\overline{\Gamma_N}$ , and of Neumann boundary type if both faces lie in  $\overline{\Gamma_N}$ . Note that for an interior patch,  $|\mathcal{F}_{\text{int}}^e| = n$ , whereas  $|\mathcal{F}_{\text{int}}^e| = n - 1$  for a boundary patch. The open domain associated with  $\mathcal{T}^e$  is denoted by  $\omega_e$ , and  $\mathbf{n}_{\omega_e}$  stands for the unit normal to  $\partial\omega_e$  pointing outward  $\omega_e$ .

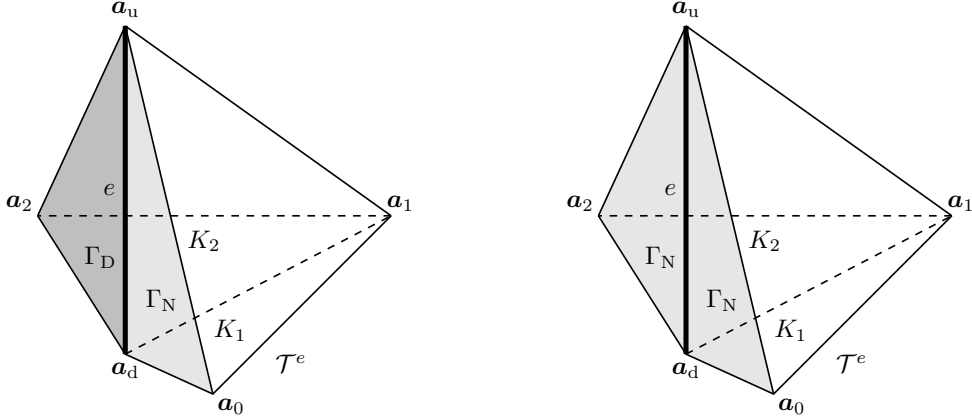


FIGURE 6. Mixed (left) and Neumann (right) boundary patch  $\mathcal{T}^e$

We denote by  $\mathbf{a}_d$  and  $\mathbf{a}_u$  the two vertices of the edge  $e$ . The remaining vertices are numbered consecutively in one sense of rotation around the edge  $e$  (this sense is only specific for the “mixed boundary” patches) and denoted by  $\mathbf{a}_0, \mathbf{a}_1, \dots, \mathbf{a}_n$ , with  $\mathbf{a}_0 = \mathbf{a}_n$  if the patch is interior. Then  $\mathcal{T}^e = \bigcup_{j \in \{1:n\}} K_j$  for  $K_j := \text{conv}(\mathbf{a}_{j-1}, \mathbf{a}_j, \mathbf{a}_d, \mathbf{a}_u)$ ; we also denote  $K_0 := K_n$  and  $K_{n+1} := K_1$ . For all  $j \in \{0:n\}$ , we define  $F_j := \text{conv}(\mathbf{a}_j, \mathbf{a}_d, \mathbf{a}_u)$ , and for all  $j \in \{1:n\}$ , we let  $F_j^d := \text{conv}(\mathbf{a}_{j-1}, \mathbf{a}_j, \mathbf{a}_d)$  and  $F_j^u := \text{conv}(\mathbf{a}_{j-1}, \mathbf{a}_j, \mathbf{a}_u)$ . Then  $\mathcal{F}_{K_j} = \{F_{j-1}, F_j, F_j^d, F_j^u\}$ , and  $F_0 = F_n$  if the patch is interior. We observe that, respectively for interior and boundary patches,  $\mathcal{F}_{\text{int}}^e = \bigcup_{j \in \{0:n-1\}} \{F_j\}$ ,  $\mathcal{F}_{\text{ext}}^e = \bigcup_{j \in \{1:n\}} \{F_j^d, F_j^u\}$  and  $\mathcal{F}_{\text{int}}^e = \bigcup_{j \in \{1:n-1\}} \{F_j\}$ ,  $\mathcal{F}_{\text{ext}}^e = \bigcup_{j \in \{1:n\}} \{F_j^d, F_j^u\} \cup \{F_0, F_n\}$ . Finally, if  $F_j \in \mathcal{F}_{\text{int}}^e$  is an internal face, we define its normal vector by  $\mathbf{n}_{F_j} := \mathbf{n}_{K_{j+1}} = -\mathbf{n}_{K_j}$ , whereas for any external face  $F \in \mathcal{F}_{\text{ext}}^e$ , we define its normal to coincide with the normal pointing outward the patch,  $\mathbf{n}_F := \mathbf{n}_{\omega_e}$ .

We now extend the notions of Section 6.1.1 to the edge patch  $\mathcal{T}^e$ . Consider the following “broken” Sobolev spaces:

$$\begin{aligned} \mathbf{H}(\text{curl}, \mathcal{T}^e) &:= \{ \mathbf{v} \in \mathbf{L}^2(\omega_e) \mid \mathbf{v}|_K \in \mathbf{H}(\text{curl}, K) \forall K \in \mathcal{T}^e \}, \\ \mathbf{H}^1(\mathcal{T}^e) &:= \{ \mathbf{v} \in \mathbf{L}^2(\omega_e) \mid \mathbf{v}|_K \in \mathbf{H}^1(K) \forall K \in \mathcal{T}^e \}, \end{aligned}$$

as well as the broken Nédélec space  $\mathcal{N}_p(\mathcal{T}^e)$ . For all  $\mathbf{v} \in \mathbf{H}^1(\mathcal{T}^e)$ , we employ the notation  $[[\mathbf{v}]]_F \in \mathbf{L}^2(F)$  for the “(strong) jump” of  $\mathbf{v}$  across any face  $F \in \mathcal{F}^e$ . Specifically, for an

patch type	$\mathcal{F}_{\text{int}}^e$	$\mathcal{F}$
interior	$\{F_1, \dots, F_n\}$	$\mathcal{F}_{\text{int}}^e = \{F_1, \dots, F_n\}$
Dirichlet boundary	$\{F_1, \dots, F_{n-1}\}$	$\mathcal{F}_{\text{int}}^e = \{F_1, \dots, F_{n-1}\}$
mixed boundary	$\{F_1, \dots, F_{n-1}\}$	$\{F_0\} \cup \mathcal{F}_{\text{int}}^e = \{F_0, F_1, \dots, F_{n-1}\}$
Neumann boundary	$\{F_1, \dots, F_{n-1}\}$	$\{F_0\} \cup \mathcal{F}_{\text{int}}^e \cup \{F_n\} = \{F_0, F_1, \dots, F_{n-1}, F_n\}$

TABLE 1. The set of internal faces  $\mathcal{F}_{\text{int}}^e$  and the set  $\mathcal{F}$  used for the minimization problems on the edge patch for the four patch types.

internal face  $F_j \in \mathcal{F}_{\text{int}}^e$ , we set  $[[\mathbf{v}]]_{F_j} := (\mathbf{v}|_{K_{j+1}})|_{F_j} - (\mathbf{v}|_{K_j})|_{F_j}$ , whereas for an external face  $F \in \mathcal{F}_{\text{ext}}^e$ , we set  $[[\mathbf{v}]]_F := \mathbf{v}|_F$ . Note in particular that piecewise polynomial functions from  $\mathcal{N}_p(\mathcal{T}^e)$  belong to  $\mathbf{H}^1(\mathcal{T}^e)$ , so that their strong jumps are well-defined.

To define a notion of a “weak tangential jump” for functions of  $\mathbf{H}(\mathbf{curl}, \mathcal{T}^e)$ , for which a strong (pointwise) definition cannot apply, some preparation is necessary. Let  $\mathcal{F}$  be a subset of the faces of an edge patch  $\mathcal{T}^e$  containing the internal faces, i.e.  $\mathcal{F}_{\text{int}}^e \subseteq \mathcal{F} \subseteq \mathcal{F}^e$ , and denote by  $\Gamma_{\mathcal{F}}$  the corresponding open set. The set  $\mathcal{F}$  depends on the type of edge patch and is reported in Table 1. In extension of (6.2), we define the piecewise polynomial space on  $\Gamma_{\mathcal{F}}$

$$(6.9) \quad \mathcal{N}_p^\tau(\Gamma_{\mathcal{F}}) := \{ \mathbf{w}_{\mathcal{F}} \in \mathbf{L}^2(\Gamma_{\mathcal{F}}) \mid \exists \mathbf{v}_p \in \mathcal{N}_p(\mathcal{T}^e); \mathbf{w}_F := (\mathbf{w}_{\mathcal{F}})|_F = \boldsymbol{\pi}_F^\tau([[ \mathbf{v}_p ]])_F \quad \forall F \in \mathcal{F} \}.$$

In extension of (6.4), for all  $\mathbf{w}_{\mathcal{F}} \in \mathcal{N}_p^\tau(\Gamma_{\mathcal{F}})$ , we set

$$(6.10) \quad \text{curl}_F(\mathbf{w}_F) := [[\boldsymbol{\nabla} \times \mathbf{v}_p]]_F \cdot \mathbf{n}_F \quad \forall F \in \mathcal{F}.$$

Then we can extend Definition 6.1 to prescribe weak tangential jumps of functions in  $\mathbf{H}(\mathbf{curl}, \mathcal{T}^e)$  as follows:

**Definition 6.3** (Tangential jumps by integration by parts in an edge patch). *Given  $\mathbf{r}_{\mathcal{F}} \in \mathcal{N}_p^\tau(\Gamma_{\mathcal{F}})$  and  $\mathbf{v} \in \mathbf{H}(\mathbf{curl}, \mathcal{T}^e)$ , we employ the notation “ $[[\mathbf{v}]]_{\mathcal{F}}^\tau = \mathbf{r}_{\mathcal{F}}$ ” to say that*

$$(6.11) \quad \sum_{K \in \mathcal{T}^e} \{ (\boldsymbol{\nabla} \times \mathbf{v}, \boldsymbol{\phi})_K - (\mathbf{v}, \boldsymbol{\nabla} \times \boldsymbol{\phi})_K \} = \sum_{F \in \mathcal{F}} (\mathbf{r}_F, \boldsymbol{\phi} \times \mathbf{n}_F)_F \quad \forall \boldsymbol{\phi} \in \mathbf{H}_{\tau, \mathcal{F}^c}^1(\mathcal{T}^e),$$

where

$$(6.12) \quad \mathbf{H}_{\tau, \mathcal{F}^c}^1(\mathcal{T}^e) := \{ \boldsymbol{\phi} \in \mathbf{H}^1(\mathcal{T}^e) \mid [[\boldsymbol{\phi}]]_F \times \mathbf{n}_F = \mathbf{0} \quad \forall F \in \mathcal{F}_{\text{int}}^e \cup (\mathcal{F}_{\text{ext}}^e \setminus \mathcal{F}) \}.$$

Whenever  $\mathbf{v} \in \mathbf{H}^1(\mathcal{T}^e)$ ,  $[[\mathbf{v}]]_{\mathcal{F}}^\tau = \mathbf{r}_{\mathcal{F}}$  if and only if  $\boldsymbol{\pi}_F^\tau([[ \mathbf{v} ]])_F = \mathbf{r}_F$  for all  $F \in \mathcal{F}$ . Note that  $\boldsymbol{\phi} \times \mathbf{n}_F$  in (6.11) is uniquely defined for all  $\boldsymbol{\phi} \in \mathbf{H}_{\tau, \mathcal{F}^c}^1(\mathcal{T}^e)$ .

6.3.2. *Statement of the stability result in an edge patch.* Henceforth, if  $\mathbf{r}_{\mathcal{T}} \in \mathcal{RT}_p(\mathcal{T}^e)$  is an elementwise Raviart–Thomas function, we will employ the notation  $\mathbf{r}_K := \mathbf{r}_{\mathcal{T}}|_K$  for all  $K \in \mathcal{T}^e$ . In addition, if  $\mathbf{v}_{\mathcal{T}} \in \mathcal{N}_p(\mathcal{T}^e)$  is an elementwise Nédélec function, the notations  $\boldsymbol{\nabla} \cdot \mathbf{r}_{\mathcal{T}}$  and  $\boldsymbol{\nabla} \times \mathbf{v}_{\mathcal{T}}$  will be understood elementwise.

**Definition 6.4** (Compatible data). *Let  $\mathbf{r}_{\mathcal{T}} \in \mathcal{RT}_p(\mathcal{T}^e)$  and  $\mathbf{r}_{\mathcal{F}} \in \mathcal{N}_p^{\tau}(\Gamma_{\mathcal{F}})$ . We say that the data  $\mathbf{r}_{\mathcal{T}}$  and  $\mathbf{r}_{\mathcal{F}}$  are compatible if*

$$(6.13a) \quad \nabla \cdot \mathbf{r}_{\mathcal{T}} = 0,$$

$$(6.13b) \quad \llbracket \mathbf{r}_{\mathcal{T}} \rrbracket_F \cdot \mathbf{n}_F = \text{curl}_F(\mathbf{r}_F) \quad \forall F \in \mathcal{F},$$

and with the following additional condition whenever the patch is either of interior or Neumann boundary type:

$$(6.13c) \quad \sum_{j \in \{1:n\}} \mathbf{r}_{F_j}|_e \cdot \boldsymbol{\tau}_e = 0 \quad (\text{interior type}),$$

$$(6.13d) \quad \sum_{j \in \{0:n-1\}} \mathbf{r}_{F_j}|_e \cdot \boldsymbol{\tau}_e = \mathbf{r}_{F_n}|_e \cdot \boldsymbol{\tau}_e \quad (\text{Neumann boundary type}).$$

**Definition 6.5** (Broken patch spaces). *Let  $\mathbf{r}_{\mathcal{T}} \in \mathcal{RT}_p(\mathcal{T}^e)$  and  $\mathbf{r}_{\mathcal{F}} \in \mathcal{N}_p^{\tau}(\Gamma_{\mathcal{F}})$  be compatible data as per Definition 6.4. We define*

$$(6.14a) \quad \mathbf{V}(\mathcal{T}^e) := \left\{ \mathbf{v} \in \mathbf{H}(\text{curl}, \mathcal{T}^e) \mid \begin{array}{l} \nabla \times \mathbf{v} = \mathbf{r}_{\mathcal{T}} \\ \llbracket \mathbf{v} \rrbracket_{\mathcal{F}} = \mathbf{r}_{\mathcal{F}} \end{array} \right\},$$

$$(6.14b) \quad \mathbf{V}_p(\mathcal{T}^e) := \mathbf{V}(\mathcal{T}^e) \cap \mathcal{N}_p(\mathcal{T}^e).$$

We will show in Lemma 6.9 below that the space  $\mathbf{V}_p(\mathcal{T}^e)$  (and therefore also  $\mathbf{V}(\mathcal{T}^e)$ ) is nonempty. We are now ready to present our central result of independent interest. To facilitate the reading, the proof is postponed to Section 6.5.

**Proposition 6.6** (Stable broken  $\mathbf{H}(\text{curl})$  polynomial extension on an edge patch). *Let an edge  $e \in \mathcal{E}_h$  and the associated edge patch  $\mathcal{T}^e$  with subdomain  $\omega_e$  be fixed. Let the set of faces  $\mathcal{F}$  be specified in Table 1. Then, for every polynomial degree  $p \geq 0$ , all  $\mathbf{r}_{\mathcal{T}} \in \mathcal{RT}_p(\mathcal{T}^e)$  and  $\mathbf{r}_{\mathcal{F}} \in \mathcal{N}_p^{\tau}(\Gamma_{\mathcal{F}})$  compatible as per Definition 6.4, the following holds:*

$$(6.15) \quad \min_{\mathbf{v}_p \in \mathbf{V}_p(\mathcal{T}^e)} \|\mathbf{v}_p\|_{\omega_e} = \min_{\substack{\mathbf{v}_p \in \mathcal{N}_p(\mathcal{T}^e) \\ \nabla \times \mathbf{v}_p = \mathbf{r}_{\mathcal{T}} \\ \llbracket \mathbf{v}_p \rrbracket_{\mathcal{F}} = \mathbf{r}_{\mathcal{F}}}} \|\mathbf{v}_p\|_{\omega_e} \leq C_{\text{st},e} \min_{\substack{\mathbf{v} \in \mathbf{H}(\text{curl}, \mathcal{T}^e) \\ \nabla \times \mathbf{v} = \mathbf{r}_{\mathcal{T}} \\ \llbracket \mathbf{v} \rrbracket_{\mathcal{F}} = \mathbf{r}_{\mathcal{F}}}} \|\mathbf{v}\|_{\omega_e} = C_{\text{st},e} \min_{\mathbf{v} \in \mathbf{V}(\mathcal{T}^e)} \|\mathbf{v}\|_{\omega_e}.$$

Here all the minimizers are uniquely defined and the constant  $C_{\text{st},e}$  only depends on the shape-regularity parameter  $\kappa_e$  of the patch  $\mathcal{T}^e$  defined in (2.4).

**Remark 6.7** (Converse inequality in Proposition 6.6). *Note that the converse to the inequality (6.15) holds trivially with constant one.*

**6.4. Equivalence of Theorem 3.1 with Proposition 6.6.** We now show, via a shift by the datum  $\boldsymbol{\chi}_h$ , that the statements (3.1) of Theorem 3.1 and (6.15) of Proposition 6.6 are equivalent. More precisely, let  $\mathbf{h}_p^* \in \mathcal{N}_p(\mathcal{T}^e) \cap \mathbf{H}_{\Gamma_N^e}(\text{curl}, \omega_e)$  and  $\mathbf{h}^* \in \mathbf{H}_{\Gamma_N^e}(\text{curl}, \omega_e)$  by any solutions to the minimization problems of Theorem 3.1 for the data  $\mathbf{j}_h^e \in \mathcal{RT}_p(\mathcal{T}^e) \cap \mathbf{H}_{\Gamma_N^e}(\text{div}, \omega_e)$  with  $\nabla \cdot \mathbf{j}_h^e = 0$  and  $\boldsymbol{\chi}_h \in \mathcal{N}_p(\mathcal{T}^e)$ . Let  $\mathbf{v}_p^* \in \mathbf{V}_p(\mathcal{T}^e)$  and  $\mathbf{v}^* \in \mathbf{V}(\mathcal{T}^e)$  be any minimizers of Proposition 6.6 for the data

$$(6.16) \quad \mathbf{r}_{\mathcal{T}} := \mathbf{j}_h^e - \nabla \times \boldsymbol{\chi}_h, \quad \mathbf{r}_F := -\boldsymbol{\pi}_F^{\tau}(\llbracket \boldsymbol{\chi}_h \rrbracket_F) \quad \forall F \in \mathcal{F},$$

where  $\mathcal{F}$  is specified in Table 1. We claim that

$$(6.17) \quad \mathbf{h}_p^* - \boldsymbol{\chi}_h = \mathbf{v}_p^*, \quad \mathbf{h}^* - \boldsymbol{\chi}_h = \mathbf{v}^*.$$

In the converse direction, for given data  $\mathbf{r}_{\mathcal{T}}$  and  $\mathbf{r}_{\mathcal{F}}$  compatible as per Definition 6.4, taking any  $\boldsymbol{\chi}_h \in \mathcal{N}_p(\mathcal{T}^e)$  such that  $-\boldsymbol{\pi}_F^{\tau}(\llbracket \boldsymbol{\chi}_h \rrbracket_F) = \mathbf{r}_F$  for all  $F \in \mathcal{F}$  and  $\mathbf{j}_h^e := \mathbf{r}_{\mathcal{T}} + \nabla \times \boldsymbol{\chi}_h$ , (6.17) holds true. As a consequence, Theorem 3.1, including the existence and uniqueness of the minimizers, will follow from the proof of Proposition 6.6 presented in the following section.

In order to show (6.17) in the forward direction for example, we merely need to show that  $\mathbf{r}_{\mathcal{T}}$  and  $\mathbf{r}_{\mathcal{F}}$  prescribed by (6.16) are compatible data as per Definition 6.4. Indeed, to start with, since  $\mathbf{j}_h^e, \nabla \times \boldsymbol{\chi}_h \in \mathcal{RT}_p(\mathcal{T}^e)$ , we have  $\mathbf{r}_{\mathcal{T}} \in \mathcal{RT}_p(\mathcal{T}^e)$ . In addition, since  $\nabla \cdot \mathbf{j}_h^e = 0$  from (3.7),

$$\nabla \cdot \mathbf{r}_{\mathcal{T}} = \nabla \cdot \mathbf{j}_h^e - \nabla \cdot (\nabla \times \boldsymbol{\chi}_h) = 0,$$

which is (6.13a). Then, for all  $j \in \{1 : n\}$  if the patch is of interior type and for all  $j \in \{1 : n - 1\}$  if the patch is of boundary type, we have

$$\mathbf{r}_{F_j} = \boldsymbol{\pi}_{F_j}^{\tau}(\boldsymbol{\chi}_h|_{K_j}) - \boldsymbol{\pi}_{F_j}^{\tau}(\boldsymbol{\chi}_h|_{K_{j+1}}),$$

and therefore, recalling the definition (6.4) of the surface curl, we infer that

$$\begin{aligned} \text{curl}_{F_j}(\mathbf{r}_{F_j}) &= \text{curl}_{F_j}(\boldsymbol{\pi}_{F_j}^{\tau}(\boldsymbol{\chi}_h|_{K_j})) - \text{curl}_{F_j}(\boldsymbol{\pi}_{F_j}^{\tau}(\boldsymbol{\chi}_h|_{K_{j+1}})) \\ &= (\nabla \times \boldsymbol{\chi}_h)|_{K_j}|_{F_j} \cdot \mathbf{n}_{F_j} - (\nabla \times \boldsymbol{\chi}_h)|_{K_{j+1}}|_{F_j} \cdot \mathbf{n}_{F_j} \\ &= -\llbracket \nabla \times \boldsymbol{\chi}_h \rrbracket_{F_j} \cdot \mathbf{n}_{F_j}. \end{aligned}$$

On the other hand, since  $\mathbf{j}_h^e \in \mathbf{H}(\text{div}, \omega_e)$ , we have  $\llbracket \mathbf{j}_h^e \rrbracket_{F_j} \cdot \mathbf{n}_{F_j} = 0$ , and therefore

$$\llbracket \mathbf{r}_{\mathcal{T}} \rrbracket_{F_j} \cdot \mathbf{n}_{F_j} = -\llbracket \nabla \times \boldsymbol{\chi}_h \rrbracket_{F_j} \cdot \mathbf{n}_{F_j} = \text{curl}_{F_j}(\mathbf{r}_{F_j}).$$

Since a similar reasoning applies on the face  $F_0$  if the patch is of Neumann or mixed boundary type and on the face  $F_n$  if the patch is of Neumann boundary type, (6.13b) is established.

It remains to show that  $\mathbf{r}_{\mathcal{F}}$  satisfies the edge compatibility condition (6.13c) or (6.13d) if the patch is interior or Neumann boundary type, respectively. Let us treat in detail the first case (the other case is treated similarly). Owing to the convention  $K_{n+1} = K_1$ , we infer that

$$\sum_{j \in \{1:n\}} \mathbf{r}_{F_j}|_e \cdot \boldsymbol{\tau}_e = \sum_{j \in \{1:n\}} (\boldsymbol{\chi}_h|_{K_j} - \boldsymbol{\chi}_h|_{K_{j+1}})|_e \cdot \boldsymbol{\tau}_e = 0,$$

which establishes (6.13c). We have thus shown that  $\mathbf{r}_{\mathcal{T}}$  and  $\mathbf{r}_{\mathcal{F}}$  are compatible data as per Definition 6.4.

**6.5. Proof of Proposition 6.6.** The proof of Proposition 6.6 is performed in two steps. First we prove that  $\mathbf{V}_p(\mathcal{T}^e)$  is nonempty by providing a generic elementwise construction of a field in  $\mathbf{V}_p(\mathcal{T}^e)$ ; this in particular implies the existence and uniqueness of all minimizers in (6.15). Then we prove the inequality (6.15) by using one such field  $\boldsymbol{\xi}_p^* \in \mathbf{V}_p(\mathcal{T}^e)$ . Throughout this section, if  $A, B \geq 0$  are two real numbers, we employ the notation  $A \lesssim B$  to say that there exists a constant  $C$  that only depends on the shape-regularity parameter

$\kappa_e$  of the patch  $\mathcal{T}^e$  defined in (2.4), such that  $A \leq CB$ . We note that in particular we have  $n = |\mathcal{T}^e| \lesssim 1$  owing to the shape-regularity of the mesh  $\mathcal{T}_h$ .

6.5.1. *Generic elementwise construction of fields in  $\mathbf{V}_p(\mathcal{T}^e)$ .* The generic construction of fields in  $\mathbf{V}_p(\mathcal{T}^e)$  is based on a loop over the mesh elements composing the edge patch  $\mathcal{T}^e$ . This loop is enumerated by means of an index  $j \in \{1 : n\}$ .

**Definition 6.8** (Element spaces). *For each  $j \in \{1 : n\}$ , let  $\emptyset \subseteq \mathcal{F}_j \subseteq \mathcal{F}_{K_j}$  be a (sub)set of the faces of  $K_j$ . Let  $\mathbf{r}_{K_j} \in \mathcal{RT}_p(K_j)$  with  $\nabla \cdot \mathbf{r}_{K_j} = 0$ , and if  $\emptyset \neq \mathcal{F}_j$ , let  $\tilde{\mathbf{r}}_{\mathcal{F}_j}^j \in \mathcal{N}_p^\tau(\Gamma_{\mathcal{F}_j})$  in the sense (6.2) be given data. We define*

$$(6.18a) \quad \mathbf{V}(K_j) := \left\{ \mathbf{v} \in \mathbf{H}(\text{curl}, K_j) \mid \begin{array}{l} \nabla \times \mathbf{v} = \mathbf{r}_{K_j} \\ \mathbf{v}|_{\mathcal{F}_j} = \tilde{\mathbf{r}}_{\mathcal{F}_j}^j \end{array} \right\},$$

$$(6.18b) \quad \mathbf{V}_p(K_j) := \mathbf{V}(K_j) \cap \mathcal{N}_p(K_j).$$

In what follows we are only concerned with the cases where  $\mathcal{F}_j$  is either empty or composed of one or two faces of  $K_j$ . In this situation the subspace  $\mathbf{V}_p(K_j)$  is nonempty if and only if

$$(6.19a) \quad \text{curl}_F(\tilde{\mathbf{r}}_F^j) = \mathbf{r}_{K_j} \cdot \mathbf{n}_F \quad \forall F \in \mathcal{F}_j,$$

$$(6.19b) \quad \tilde{\mathbf{r}}_{F_+}^j|_e \cdot \boldsymbol{\tau}_e = \tilde{\mathbf{r}}_{F_-}^j|_e \cdot \boldsymbol{\tau}_e \quad \text{if } \mathcal{F}_j = \{F_+, F_-\} \text{ with } e = F_+ \cap F_-,$$

where  $\mathbf{n}_F$  is the unit normal orienting  $F$  used in the definition of the surface curl (see (6.4)). The second condition (6.19b) is relevant only if  $|\mathcal{F}_j| = 2$ .

**Lemma 6.9** (Generic elementwise construction). *Let  $e \in \mathcal{E}_h$ , let  $\mathcal{T}^e$  be the edge patch associated with  $e$ , and let the set of faces  $\mathcal{F}$  be specified in Table 1. Let  $\mathbf{r}_{\mathcal{T}} \in \mathcal{RT}_p(\mathcal{T}^e)$  and  $\mathbf{r}_{\mathcal{F}} \in \mathcal{N}_p^\tau(\Gamma_{\mathcal{F}})$  be compatible data as per Definition 6.4. Define  $\mathbf{r}_{K_j} := \mathbf{r}_{\mathcal{T}}|_{K_j}$  for all  $j \in \{1 : n\}$ . Then, the following inductive procedure yields a sequence of nonempty spaces  $(\mathbf{V}_p(K_j))_{j \in \{1:n\}}$  in the sense of Definition 6.8, as well as a sequence of fields  $(\boldsymbol{\xi}_p^j)_{j \in \{1:n\}}$  such that  $\boldsymbol{\xi}_p^j \in \mathbf{V}_p(K_j)$  for all  $j \in \{1 : n\}$ . Moreover, the field  $\boldsymbol{\xi}_p$  prescribed by  $\boldsymbol{\xi}_p|_{K_j} := \boldsymbol{\xi}_p^j$  for all  $j \in \{1 : n\}$  belongs to the space  $\mathbf{V}_p(\mathcal{T}^e)$  of Definition 6.5:*

1) *First element ( $j = 1$ ): Set  $\mathcal{F}_1 := \emptyset$  if the patch is of interior or Dirichlet boundary type and set  $\mathcal{F}_1 := \{F_0\}$  if the patch is of Neumann or mixed boundary type together with*

$$(6.20a) \quad \tilde{\mathbf{r}}_{F_0}^1 := \mathbf{r}_{F_0}.$$

*Define the space  $\mathbf{V}_p(K_1)$  according to (6.18b) and pick any  $\boldsymbol{\xi}_p^1 \in \mathbf{V}_p(K_1)$ .*

2) *Middle elements ( $j \in \{2 : n-1\}$ ): Set  $\mathcal{F}_j := \{F_{j-1}\}$  together with*

$$(6.20b) \quad \tilde{\mathbf{r}}_{F_{j-1}}^j := \boldsymbol{\pi}_{F_{j-1}}^\tau(\boldsymbol{\xi}_p^{j-1}) + \mathbf{r}_{F_{j-1}},$$

*with  $\boldsymbol{\xi}_p^{j-1}$  obtained in the previous step of the procedure. Define the space  $\mathbf{V}_p(K_j)$  according to (6.18b) and pick any  $\boldsymbol{\xi}_p^j \in \mathbf{V}_p(K_j)$ .*

3) *Last element ( $j = n$ ): Set  $\mathcal{F}_n := \{F_{n-1}\}$  if the patch is of Dirichlet or mixed boundary*



type and set  $\mathcal{F}_n := \{F_{n-1}, F_n\}$  if the patch is of interior or Neumann boundary type and define  $\tilde{\mathbf{r}}_{\mathcal{F}_n}^n$  as follows: For the four cases of the patch,

$$(6.20c) \quad \tilde{\mathbf{r}}_{F_{n-1}}^n := \boldsymbol{\pi}_{F_{n-1}}^\tau(\boldsymbol{\xi}_p^{n-1}) + \mathbf{r}_{F_{n-1}},$$

with  $\boldsymbol{\xi}_p^{n-1}$  obtained in the previous step of the procedure, and in the two cases where  $\mathcal{F}_n$  also contains  $F_n$ :

$$(6.20d) \quad \tilde{\mathbf{r}}_{F_n}^n := \boldsymbol{\pi}_{F_n}^\tau(\boldsymbol{\xi}_p^1) - \mathbf{r}_{F_n} \quad \text{interior type,}$$

$$(6.20e) \quad \tilde{\mathbf{r}}_{F_n}^n := \mathbf{r}_{F_n} \quad \text{Neumann boundary type.}$$

Define the space  $\mathbf{V}_p(K_n)$  according to (6.18b) and pick any  $\boldsymbol{\xi}_p^n \in \mathbf{V}_p(K_n)$ .

*Proof.* We first show that  $\boldsymbol{\xi}_p^j$  is well-defined in  $\mathbf{V}_p(K_j)$  for all  $j \in \{1 : n\}$ . We do so by verifying that  $\tilde{\mathbf{r}}_{\mathcal{F}_j}^j \in \mathcal{N}_p^\tau(\Gamma_{\mathcal{F}_j})$  (recall (6.2)) and that the conditions (6.19) hold true for all  $j \in \{1 : n\}$ . Then we show that  $\boldsymbol{\xi}_p \in \mathbf{V}_p(\mathcal{T}^e)$ .

(1) First element ( $j = 1$ ). If the patch is of interior or Dirichlet boundary type, there is nothing to verify since  $\mathcal{F}_1$  is empty. If the patch is of Neumann or mixed boundary type,  $\mathcal{F}_1 = \{F_0\}$  and we need to verify that  $\tilde{\mathbf{r}}_{F_0}^1 \in \mathcal{N}_p^\tau(\Gamma_{\{F_0\}})$  and that  $\text{curl}_{F_0}(\tilde{\mathbf{r}}_{F_0}^1) = \mathbf{r}_{K_1} \cdot \mathbf{n}_{F_0}$ , see (6.19a). Since  $\tilde{\mathbf{r}}_{F_1}^1 = \mathbf{r}_{F_0} \in \mathcal{N}_p^\tau(\Gamma_{\{F_0\}})$  by assumption, the first requirement is met. The second one follows from  $\mathbf{r}_{K_1} \cdot \mathbf{n}_{F_0} = \llbracket \mathbf{r}_{\mathcal{T}} \rrbracket_{F_0} \cdot \mathbf{n}_{F_0} = \text{curl}_{F_0}(\mathbf{r}_{F_0}) = \text{curl}_{F_0}(\tilde{\mathbf{r}}_{F_0}^1)$  owing to (6.13b).

(2) Middle elements ( $j \in \{2 : n-1\}$ ). Since  $\mathcal{F}_j = \{F_{j-1}\}$ , we need to show that  $\tilde{\mathbf{r}}_{F_{j-1}}^j \in \mathcal{N}_p^\tau(\Gamma_{\{F_{j-1}\}})$  and that  $\text{curl}_{F_{j-1}}(\tilde{\mathbf{r}}_{F_{j-1}}^j) = \mathbf{r}_{K_j} \cdot \mathbf{n}_{F_{j-1}}$ . The first requirement follows from the definition (6.20b) of  $\tilde{\mathbf{r}}_{F_{j-1}}^j$ . To verify the second requirement we recall the definition (6.4) of the surface curl and use the curl constraint from (6.18a) to infer that

$$\begin{aligned} \text{curl}_{F_{j-1}}(\tilde{\mathbf{r}}_{F_{j-1}}^j) &= \text{curl}_{F_{j-1}}(\boldsymbol{\pi}_{F_{j-1}}^\tau(\boldsymbol{\xi}_p^{j-1})) + \text{curl}_{F_{j-1}}(\mathbf{r}_{F_{j-1}}) \\ &= (\boldsymbol{\nabla} \times \boldsymbol{\xi}_p^{j-1})|_{F_{j-1}} \cdot \mathbf{n}_{F_{j-1}} + \text{curl}_{F_{j-1}}(\mathbf{r}_{F_{j-1}}) \\ &= \mathbf{r}_{K_{j-1}} \cdot \mathbf{n}_{F_{j-1}} + \text{curl}_{F_{j-1}}(\mathbf{r}_{F_{j-1}}). \end{aligned}$$

By virtue of assumption (6.13b) it follows that

$$\begin{aligned} \mathbf{r}_{K_j} \cdot \mathbf{n}_{F_{j-1}} - \text{curl}_{F_{j-1}}(\tilde{\mathbf{r}}_{F_{j-1}}^j) &= \mathbf{r}_{K_j} \cdot \mathbf{n}_{F_{j-1}} - \mathbf{r}_{K_{j-1}} \cdot \mathbf{n}_{F_{j-1}} - \text{curl}_{F_{j-1}}(\mathbf{r}_{F_{j-1}}) \\ &= \llbracket \mathbf{r}_{\mathcal{T}} \rrbracket_{F_{j-1}} \cdot \mathbf{n}_{F_{j-1}} - \text{curl}_{F_{j-1}}(\mathbf{r}_{F_{j-1}}) = 0. \end{aligned}$$

(3) Last element ( $j = n$ ). We distinguish two cases.

(3a) Patch of Dirichlet or mixed boundary type. In this case  $\mathcal{F}_n = \{F_{n-1}\}$  and the reasoning is identical to the case of a middle element.

(3b) Patch of interior or Neumann boundary type. In this case,  $\mathcal{F}_n = \{F_{n-1}, F_n\}$ . First the prescriptions (6.20c)–(6.20d)–(6.20e) imply that  $\tilde{\mathbf{r}}_{\mathcal{F}_n}^n \in \mathcal{N}_p^\tau(\Gamma_{\mathcal{F}_n})$  in the sense of (6.2). It remains to show (6.19a), i.e.

$$(6.21) \quad \text{curl}_{F_{n-1}}(\tilde{\mathbf{r}}_{F_{n-1}}^n) = \mathbf{r}_{K_n} \cdot \mathbf{n}_{F_{n-1}}, \quad \text{curl}_{F_n}(\tilde{\mathbf{r}}_{F_n}^n) = \mathbf{r}_{K_n} \cdot \mathbf{n}_{F_n},$$

and, since  $\mathcal{F}_n$  is composed of two faces, we also need to show the edge compatibility condition (6.19b), i.e.

$$(6.22) \quad \widetilde{\mathbf{r}}_{F_{n-1}}^n|_e \cdot \boldsymbol{\tau}_e = \widetilde{\mathbf{r}}_{F_n}^n|_e \cdot \boldsymbol{\tau}_e.$$

The proof of the first identity in (6.21) is as above, so we now detail the proof of the second identity in (6.21) and the proof of (6.22).

**(3b-I)** Let us consider the case of a patch of interior type. To prove the second identity in (6.21), we use definition (6.4) of the surface curl together with the curl constraint in (6.18a) and infer that

$$\begin{aligned} \text{curl}_{F_n}(\widetilde{\mathbf{r}}_{F_n}^n) &= \text{curl}_{F_n}(\boldsymbol{\pi}_{F_n}^\tau(\boldsymbol{\xi}_p^1) - \mathbf{r}_{F_n}) \\ &= \nabla \times \boldsymbol{\xi}_p^1 \cdot \mathbf{n}_{F_n} - \text{curl}_{F_n}(\mathbf{r}_{F_n}) \\ &= \mathbf{r}_{K_1} \cdot \mathbf{n}_{F_n} - \text{curl}_{F_n}(\mathbf{r}_{F_n}). \end{aligned}$$

This gives

$$\begin{aligned} \mathbf{r}_{K_n} \cdot \mathbf{n}_{F_n} - \text{curl}_F(\widetilde{\mathbf{r}}_{F_n}^n) &= (\mathbf{r}_{K_n} - \mathbf{r}_{K_1}) \cdot \mathbf{n}_{F_n} + \text{curl}_F(\mathbf{r}_{F_n}) \\ &= -\llbracket \mathbf{r} \rrbracket_{F_n} \cdot \mathbf{n}_{F_n} + \text{curl}_F(\mathbf{r}_{F_n}) = 0, \end{aligned}$$

where the last equality follows from (6.13b). This proves the expected identity on the curl.

Let us now prove (6.22). For all  $j \in \{1 : n-1\}$ , since  $\boldsymbol{\xi}_p^j \in \mathcal{N}_p(K_j)$ , its tangential traces satisfy the edge compatibility condition

$$(6.23) \quad \left( \boldsymbol{\pi}_{F_{j-1}}^\tau(\boldsymbol{\xi}_p^j) \right)|_e \cdot \boldsymbol{\tau}_e = \left( \boldsymbol{\pi}_{F_j}^\tau(\boldsymbol{\xi}_p^j) \right)|_e \cdot \boldsymbol{\tau}_e.$$

Moreover, for all  $j \in \{1 : n-2\}$ , we have  $F_j \in \mathcal{F}_{j+1}$  so that by (6.18a) and the definition (6.20b) of  $\widetilde{\mathbf{r}}_{F_j}^{j+1}$ , we have

$$\boldsymbol{\pi}_{F_j}^\tau(\boldsymbol{\xi}_p^{j+1}) = \widetilde{\mathbf{r}}_{F_j}^{j+1} = \boldsymbol{\pi}_{F_j}^\tau(\boldsymbol{\xi}_p^j) + \mathbf{r}_{F_j},$$

and therefore using (6.23) yields

$$\left( \boldsymbol{\pi}_{F_{j-1}}^\tau(\boldsymbol{\xi}_p^j) \right)|_e \cdot \boldsymbol{\tau}_e = \left( \boldsymbol{\pi}_{F_j}^\tau(\boldsymbol{\xi}_p^{j+1}) \right)|_e \cdot \boldsymbol{\tau}_e - \mathbf{r}_{F_j}|_e \cdot \boldsymbol{\tau}_e.$$

Summing this identity for all  $j \in \{1 : n-2\}$  leads to

$$\left( \boldsymbol{\pi}_{F_0}^\tau(\boldsymbol{\xi}_p^1) \right)|_e \cdot \boldsymbol{\tau}_e = \left( \boldsymbol{\pi}_{F_{n-2}}^\tau(\boldsymbol{\xi}_p^{n-1}) \right)|_e \cdot \boldsymbol{\tau}_e - \sum_{j \in \{1:n-2\}} \mathbf{r}_{F_j}|_e \cdot \boldsymbol{\tau}_e.$$

In addition, using again the edge compatibility condition (6.23) for  $j = n-1$  and the definition (6.20c) of  $\widetilde{\mathbf{r}}_{F_{n-1}}^n$  leads to

$$\left( \boldsymbol{\pi}_{F_{n-2}}^\tau(\boldsymbol{\xi}_p^{n-1}) \right)|_e \cdot \boldsymbol{\tau}_e = \widetilde{\mathbf{r}}_{F_{n-1}}^n|_e \cdot \boldsymbol{\tau}_e - \mathbf{r}_{F_{n-1}}|_e \cdot \boldsymbol{\tau}_e.$$

Summing the above two identities gives

$$(6.24) \quad \left( \boldsymbol{\pi}_{F_0}^\tau(\boldsymbol{\xi}_p^1) \right)|_e \cdot \boldsymbol{\tau}_e = \widetilde{\mathbf{r}}_{F_{n-1}}^n|_e \cdot \boldsymbol{\tau}_e - \sum_{j \in \{1:n-1\}} \mathbf{r}_{F_j}|_e \cdot \boldsymbol{\tau}_e.$$

Since  $F_0 = F_n$  for a patch of interior type and  $\tilde{\mathbf{r}}_{F_n}^n = \boldsymbol{\pi}_{F_n}^\tau(\boldsymbol{\xi}_p^1) - \mathbf{r}_{F_n}$  owing to (6.20d), the identity (6.24) gives

$$\begin{aligned} \tilde{\mathbf{r}}_{F_n}^n|_e \cdot \boldsymbol{\tau}_e &= (\boldsymbol{\pi}_{F_0}^\tau(\boldsymbol{\xi}_p^1))|_e \cdot \boldsymbol{\tau}_e - (\mathbf{r}_{F_n}|_e \cdot \boldsymbol{\tau}_e) \\ &= \tilde{\mathbf{r}}_{F_{n-1}}^n|_e \cdot \boldsymbol{\tau}_e - \sum_{j \in \{1:n-1\}} \mathbf{r}_{F_j}|_e \cdot \boldsymbol{\tau}_e - (\mathbf{r}_{F_n}|_e \cdot \boldsymbol{\tau}_e) \\ &= \tilde{\mathbf{r}}_{F_{n-1}}^n|_e \cdot \boldsymbol{\tau}_e - \sum_{j \in \{1:n\}} \mathbf{r}_{F_j}|_e \cdot \boldsymbol{\tau}_e = \tilde{\mathbf{r}}_{F_{n-1}}^n|_e \cdot \boldsymbol{\tau}_e, \end{aligned}$$

where we used the edge compatibility condition (6.13c) satisfied by  $\mathbf{r}_{\mathcal{F}}$  in the last equality. This proves (6.22) in the interior case.

**(3b-N)** Let us finally consider a patch of Neumann boundary type. The second identity in (6.21) follows directly from (6.13b) and (6.20e). Let us thus prove (6.22). The identity (6.24) still holds true. Using that  $(\boldsymbol{\pi}_{F_0}^\tau(\boldsymbol{\xi}_p^1))|_e \cdot \boldsymbol{\tau}_e = \mathbf{r}_{F_0}|_e \cdot \boldsymbol{\tau}_e$ , this identity is rewritten as

$$\tilde{\mathbf{r}}_{F_{n-1}}^n|_e \cdot \boldsymbol{\tau}_e = \sum_{j \in \{0:n-1\}} \mathbf{r}_{F_j}|_e \cdot \boldsymbol{\tau}_e = \mathbf{r}_{F_n}|_e \cdot \boldsymbol{\tau}_e,$$

where the last equality follows from the edge compatibility condition (6.13d) satisfied by  $\mathbf{r}_{\mathcal{F}}$ . But since  $\tilde{\mathbf{r}}_{F_n}^n = \mathbf{r}_{F_n}$  owing to (6.20e), this again proves (6.22).

**(4)** It remains to show that  $\boldsymbol{\xi}_p \in \mathbf{V}_p(\mathcal{T}^e)$  as per Definition 6.5. By construction, we have  $\boldsymbol{\pi}_{F_j}^\tau(\boldsymbol{\xi}_p|_{K_{j+1}}) - \boldsymbol{\pi}_{F_j}^\tau(\boldsymbol{\xi}_p|_{K_j}) = \mathbf{r}_{F_j}$  for all  $j \in \{1:n-1\}$ ,  $\boldsymbol{\pi}_{F_n}^\tau(\boldsymbol{\xi}_p|_{K_0}) - \boldsymbol{\pi}_{F_n}^\tau(\boldsymbol{\xi}_p|_{K_n}) = \mathbf{r}_{F_n}$  if the patch is of interior type,  $\boldsymbol{\pi}_{F_0}^\tau(\boldsymbol{\xi}_p|_{K_1}) = \mathbf{r}_{F_0}$  if the patch is of Neumann or mixed boundary type, and  $\boldsymbol{\pi}_{F_n}^\tau(\boldsymbol{\xi}_p|_{K_n}) = \mathbf{r}_{F_n}$  if the patch is of Neumann type. This proves that  $\boldsymbol{\pi}_F^\tau(\llbracket \boldsymbol{\xi}_p \rrbracket_F) = \mathbf{r}_F$  for all  $F \in \mathcal{F}$ , i.e.,  $\llbracket \boldsymbol{\xi}_p \rrbracket_{\mathcal{F}}^\tau = \mathbf{r}_{\mathcal{F}}$  in the sense of Definition 6.3.  $\square$

6.5.2. *Proof of Proposition 6.6.* We are now ready to establish the proof of Proposition 6.6. Owing to Lemma 6.9, the fields

$$(6.25) \quad \boldsymbol{\xi}_p^{*j} := \underset{\mathbf{v}_p \in \mathbf{V}_p(K_j)}{\operatorname{argmin}} \|\mathbf{v}_p\|_{K_j}, \quad j \in \{1:n\},$$

are uniquely defined in  $\mathbf{V}_p(K_j)$ , and the field  $\boldsymbol{\xi}_p^*$  such that  $\boldsymbol{\xi}_p^*|_{K_j} := \boldsymbol{\xi}_p^{*j}$  for all  $j \in \{1:n\}$  satisfies  $\boldsymbol{\xi}_p^* \in \mathbf{V}_p(\mathcal{T}^e)$ . Since the minimizing sets in (6.15) are nonempty (they all contain  $\boldsymbol{\xi}_p^*$ ), both the discrete and the continuous minimizers are uniquely defined owing to standard convexity arguments. Let us set

$$\mathbf{v}^* := \underset{\mathbf{v} \in \mathbf{V}(\mathcal{T}^e)}{\operatorname{argmin}} \|\mathbf{v}\|_{\omega_e}, \quad \mathbf{v}_j^* := \mathbf{v}^*|_{K_j}, \quad j \in \{1:n\}.$$

To prove Proposition 6.6, it is enough to show that

$$(6.26) \quad \|\boldsymbol{\xi}_p^*\|_{\omega_e} \lesssim \|\mathbf{v}^*\|_{\omega_e}.$$

Owing to Proposition 6.2 applied with  $K := K_j$  and  $\mathcal{F} := \mathcal{F}_j$  for all  $j \in \{1:n\}$ , we have

$$(6.27) \quad \|\boldsymbol{\xi}_p^*\|_{K_j} \lesssim \min_{\boldsymbol{\zeta} \in \mathbf{V}(K_j)} \|\boldsymbol{\zeta}\|_{K_j},$$

where  $\mathbf{V}(K_j)$  is defined in (6.18a). Therefore, recalling that  $|\mathcal{T}^e| \lesssim 1$ , (6.26) will be proved if for all  $j \in \{1 : n\}$ , we can construct a field  $\boldsymbol{\zeta}_j \in \mathbf{V}(K_j)$  such that  $\|\boldsymbol{\zeta}_j\|_{K_j} \leq \|\mathbf{v}^*\|_{\omega_e}$ . To do so, we proceed once again by induction.

(1) First element ( $j = 1$ ). Since  $\mathbf{v}_1^* \in \mathbf{V}(K_1)$ , the claim is established with  $\boldsymbol{\zeta}_1 := \mathbf{v}_1^*$  which trivially satisfies  $\|\boldsymbol{\zeta}_1\|_{K_1} = \|\mathbf{v}_1^*\|_{K_1} \leq \|\mathbf{v}^*\|_{\omega_e}$ .

(2) Middle elements ( $j \in \{2 : n-1\}$ ). We proceed by induction. Given  $\boldsymbol{\zeta}_{j-1} \in \mathbf{V}(K_{j-1})$  such that  $\|\boldsymbol{\zeta}_{j-1}\|_{K_{j-1}} \lesssim \|\mathbf{v}^*\|_{\omega_e}$ , let us construct a suitable  $\boldsymbol{\zeta}_j \in \mathbf{V}(K_j)$  such that  $\|\boldsymbol{\zeta}_j\|_{K_j} \lesssim \|\mathbf{v}^*\|_{\omega_e}$ . We consider the affine geometric mapping  $\mathbf{T}_{j-1,j} : K_{j-1} \rightarrow K_j$  that leaves the three vertices  $\mathbf{a}_d$ ,  $\mathbf{a}_{j-1}$ , and  $\mathbf{a}_u$  (and consequently the face  $F_{j-1}$ ) invariant, whereas  $\mathbf{T}_{j-1,j}(\mathbf{a}_{j-2}) = \mathbf{a}_j$ . We denote by  $\boldsymbol{\psi}_{j-1,j}^c := \boldsymbol{\psi}_{\mathbf{T}_{j-1,j}}^c$  the associated Piola mapping, see Section 6.2. Let us define the function  $\boldsymbol{\zeta}_j \in \mathbf{H}(\text{curl}, K_j)$  by

$$(6.28) \quad \boldsymbol{\zeta}_j := \mathbf{v}_j^* - \epsilon_{j-1,j} \boldsymbol{\psi}_{j-1,j}^c (\boldsymbol{\xi}_p^{*j-1} - \mathbf{v}_{j-1}^*),$$

where  $\epsilon_{j-1,j} := \text{sign}(\det \mathbb{J}_{\mathbf{T}_{j-1,j}})$ . Using the triangle inequality, the  $L^2$ -stability of the Piola mapping (see (6.8)), inequality (6.27), and the induction hypothesis, we have

$$(6.29) \quad \begin{aligned} \|\boldsymbol{\zeta}_j\|_{K_j} &\leq \|\mathbf{v}^*\|_{K_j} + \|\boldsymbol{\psi}_{j-1,j}^c (\boldsymbol{\xi}_p^{*j-1} - \mathbf{v}_{j-1}^*)\|_{K_j} \\ &\lesssim \|\mathbf{v}^*\|_{K_j} + \|\boldsymbol{\xi}_p^* - \mathbf{v}^*\|_{K_{j-1}} \\ &\leq \|\mathbf{v}^*\|_{K_j} + \|\boldsymbol{\xi}_p^*\|_{K_{j-1}} + \|\mathbf{v}^*\|_{K_{j-1}} \\ &\lesssim \|\mathbf{v}^*\|_{K_j} + \|\boldsymbol{\zeta}_{j-1}\|_{K_{j-1}} + \|\mathbf{v}^*\|_{K_{j-1}} \lesssim \|\mathbf{v}^*\|_{\omega_e}. \end{aligned}$$

Thus it remains to establish that  $\boldsymbol{\zeta}_j \in \mathbf{V}(K_j)$  in the sense of Definition 6.8, i.e. we need to show that  $\nabla \times \boldsymbol{\zeta}_j = \mathbf{r}_{K_j}$  and  $\boldsymbol{\zeta}_j|_{\mathcal{F}_j}^\tau = \tilde{\mathbf{r}}_{\mathcal{F}_j}^j$ . Recalling the curl constraints in (6.14a) and (6.18a) which yield  $\nabla \times \boldsymbol{\xi}_p^* = \nabla \times \mathbf{v}^* = \mathbf{r}_{\mathcal{T}}$  and using (6.6), we have

$$(6.30) \quad \begin{aligned} \nabla \times \boldsymbol{\zeta}_j &= \nabla \times \mathbf{v}_j^* - \epsilon_{j-1,j} \nabla \times \boldsymbol{\psi}_{j-1,j}^c (\boldsymbol{\xi}_p^{*j-1} - \mathbf{v}_{j-1}^*) \\ &= \mathbf{r}_{K_j} - \epsilon_{j-1,j} \boldsymbol{\psi}_{j-1,j}^d (\nabla \times (\boldsymbol{\xi}_p^{*j-1} - \mathbf{v}_{j-1}^*)) = \mathbf{r}_{K_j}, \end{aligned}$$

which proves the expected condition on the curl of  $\boldsymbol{\zeta}_j$ .

It remains to verify the weak tangential trace condition  $\boldsymbol{\zeta}_j|_{\mathcal{F}_j}^\tau = \tilde{\mathbf{r}}_{\mathcal{F}_j}^j$  as per Definition 6.1. To this purpose, let  $\boldsymbol{\phi} \in \mathbf{H}_{\tau, \mathcal{F}_j^c}^1(K_j)$  and define  $\tilde{\boldsymbol{\phi}}$  by

$$(6.31) \quad \tilde{\boldsymbol{\phi}}|_{K_j} := \boldsymbol{\phi} \quad \tilde{\boldsymbol{\phi}}|_{K_{j-1}} := (\boldsymbol{\psi}_{j-1,j}^c)^{-1}(\boldsymbol{\phi}), \quad \tilde{\boldsymbol{\phi}}|_{K_l} = \mathbf{0} \quad \forall l \in \{1 : n\} \setminus \{j-1, j\}.$$

These definitions imply that  $\tilde{\boldsymbol{\phi}} \in \mathbf{H}(\text{curl}, \omega_e) \cap \mathbf{H}_{\tau, \mathcal{F}_j^c}^1(\mathcal{T}^e)$  (recall (6.12)) with

$$\left( \tilde{\boldsymbol{\phi}}|_{K_{j-1}} \right) \Big|_{F_{j-1}} \times \mathbf{n}_{F_{j-1}} = \left( \tilde{\boldsymbol{\phi}}|_{K_j} \right) \Big|_{F_{j-1}} \times \mathbf{n}_{F_{j-1}} = \boldsymbol{\phi}|_{F_{j-1}} \times \mathbf{n}_{F_{j-1}},$$

as well as

$$\tilde{\boldsymbol{\phi}}|_F \times \mathbf{n}_F = \mathbf{0} \quad \forall F \in \mathcal{F}^e \setminus \{F_{j-1}\}.$$

(Note that  $\tilde{\phi}|_F \times \mathbf{n}_F$  is uniquely defined by assumption.) Recalling definition (6.28) of  $\zeta_j$  and that  $\nabla \times \zeta_j = \mathbf{r}_{K_j} = \nabla \times \mathbf{v}_j^*$ , see (6.30), we have

$$\begin{aligned} & (\nabla \times \zeta_j, \phi)_{K_j} - (\zeta_j, \nabla \times \phi)_{K_j} \\ &= (\nabla \times \mathbf{v}^*, \phi)_{K_j} - (\mathbf{v}^*, \nabla \times \phi)_{K_j} + \epsilon_{j-1,j}(\psi_{j-1,j}^c(\xi_p^{*j-1} - \mathbf{v}_{j-1}^*), \nabla \times \phi)_{K_j} \\ &= (\nabla \times \mathbf{v}^*, \tilde{\phi})_{K_j} - (\mathbf{v}^*, \nabla \times \tilde{\phi})_{K_j} + (\xi_p^* - \mathbf{v}^*, \nabla \times \tilde{\phi})_{K_{j-1}}, \end{aligned}$$

where we used the definition of  $\tilde{\phi}$ , properties (6.7), (6.6) of the Piola mapping, and the definition of  $\epsilon_{j-1,j}$  to infer that

$$\begin{aligned} \epsilon_{j-1,j}(\psi_{j-1,j}^c(\xi_p^{*j-1} - \mathbf{v}_{j-1}^*), \nabla \times \phi)_{K_j} &= \epsilon_{j-1,j}^2(\xi_p^* - \mathbf{v}^*, \nabla \times ((\psi_{j-1,j}^c)^{-1} \phi|_{K_j}))_{K_{j-1}} \\ &= (\xi_p^* - \mathbf{v}^*, \nabla \times \tilde{\phi})_{K_{j-1}}. \end{aligned}$$

Since  $\nabla \times \xi_p^* = \mathbf{r}_T = \nabla \times \mathbf{v}^*$  and  $\tilde{\phi} = \mathbf{0}$  outside  $K_{j-1} \cup K_j$ , this gives

$$\begin{aligned} (6.32) \quad & (\nabla \times \zeta_j, \phi)_{K_j} - (\zeta_j, \nabla \times \phi)_{K_j} \\ &= (\nabla \times \mathbf{v}^*, \tilde{\phi})_{K_j} - (\mathbf{v}^*, \nabla \times \tilde{\phi})_{K_j} + (\xi_p^* - \mathbf{v}^*, \nabla \times \tilde{\phi})_{K_{j-1}} + (\nabla \times (\mathbf{v}^* - \xi_p^*), \tilde{\phi})_{K_{j-1}} \\ &= \sum_{K \in \mathcal{T}^e} \left\{ (\nabla \times \mathbf{v}^*, \tilde{\phi})_K - (\mathbf{v}^*, \nabla \times \tilde{\phi})_K \right\} - \left( (\nabla \times \xi_p^*, \tilde{\phi})_{K_{j-1}} - (\xi_p^*, \nabla \times \tilde{\phi})_{K_{j-1}} \right). \end{aligned}$$

Since  $\mathbf{v}^* \in \mathbf{V}(\mathcal{T}^e)$ ,  $\tilde{\phi} \in \mathbf{H}_{\tau, \mathcal{F}^c}^1(\mathcal{T}^e)$ , and  $[[\mathbf{v}^*]]_{\mathcal{F}} = \mathbf{r}_{\mathcal{F}}$ , we have from Definitions 6.3 and 6.5

$$\begin{aligned} (6.33) \quad & \sum_{K \in \mathcal{T}^e} \left\{ (\nabla \times \mathbf{v}^*, \tilde{\phi})_K - (\mathbf{v}^*, \nabla \times \tilde{\phi})_K \right\} = \sum_{F \in \mathcal{F}} (\mathbf{r}_F, \tilde{\phi} \times \mathbf{n}_F)_F \\ &= (\mathbf{r}_{F_{j-1}}, \phi \times \mathbf{n}_{F_{j-1}})_{F_{j-1}}, \end{aligned}$$

where in the last equality, we have employed the definition (6.31) of  $\tilde{\phi}$ . On the other hand, since  $\xi_p^*|_{K_{j-1}}, \tilde{\phi}|_{K_{j-1}} \in \mathbf{H}^1(K_{j-1})$ , we can employ the pointwise definition of the trace and infer that

$$\begin{aligned} (6.34) \quad & (\nabla \times \xi_p^*, \tilde{\phi})_{K_{j-1}} - (\xi_p^*, \nabla \times \tilde{\phi})_{K_{j-1}} = (\pi_{F_{j-1}}^\tau(\xi_p^{*j-1}), \tilde{\phi}|_{K_{j-1}} \times \mathbf{n}_{K_{j-1}})_{F_{j-1}} \\ &= -(\pi_{F_{j-1}}^\tau(\xi_p^{*j-1}), \phi \times \mathbf{n}_{F_{j-1}})_{F_{j-1}}, \end{aligned}$$

where we used that  $\mathbf{n}_{K_{j-1}} = -\mathbf{n}_{F_{j-1}}$ . Then, plugging (6.33) and (6.34) into (6.32) and employing (6.20b) and  $\mathbf{n}_{K_j} = \mathbf{n}_{F_{j-1}}$ , we obtain

$$\begin{aligned} & (\nabla \times \zeta_j, \phi)_{K_j} - (\zeta_j, \nabla \times \phi)_{K_j} = (\mathbf{r}_{F_{j-1}}, \phi \times \mathbf{n}_{F_{j-1}})_{F_{j-1}} + (\pi_{F_{j-1}}^\tau(\xi_p^{*j-1}), \phi \times \mathbf{n}_{F_{j-1}})_{F_{j-1}} \\ &= (\mathbf{r}_{F_{j-1}} + \pi_{F_{j-1}}^\tau(\xi_p^{*j-1}), \phi \times \mathbf{n}_{F_{j-1}})_{F_{j-1}} \\ &= (\tilde{\mathbf{r}}_{F_{j-1}}^j, \phi \times \mathbf{n}_{K_j})_{F_{j-1}}. \end{aligned}$$

Since  $\mathcal{F}_j := \{F_{j-1}\}$ , this shows that  $\zeta_j$  satisfies the weak tangential trace condition in  $\mathbf{V}(K_j)$  by virtue of Definition 6.1.

(3) Last element ( $j = n$ ). We need to distinguish the type of patch.

**(3a)** Patch of Dirichlet or mixed boundary type. In this case, we can employ the same argument as for the middle elements since  $\mathcal{F}_n = \{F_{n-1}\}$  is composed of only one face.

**(3b)** Patch of interior type. Owing to the induction hypothesis, we have  $\|\zeta_j\|_{K_j} \lesssim \|\mathbf{v}^*\|_{\omega_e}$  for all  $j \in \{1 : n-1\}$ . Let us first assume that there is an even number of tetrahedra in the patch  $\mathcal{T}^e$ , as in Figure 1, left. The case where this number is odd will be discussed below. We build a geometric mapping  $\mathbf{T}_{j,n} : K_j \rightarrow K_n$  for all  $j \in \{1 : n-1\}$  as follows:  $\mathbf{T}_{j,n}$  leaves the edge  $e$  pointwise invariant,  $\mathbf{T}_{j,n}(\mathbf{a}_{j-1}) := \mathbf{a}_n$ ,  $\mathbf{T}_{j,n}(\mathbf{a}_j) := \mathbf{a}_{n-1}$  if  $(n-j)$  is odd, and  $\mathbf{T}_{j,n}(\mathbf{a}_j) := \mathbf{a}_n$ ,  $\mathbf{T}_{j,n}(\mathbf{a}_{j-1}) := \mathbf{a}_{n-1}$  if  $(n-j)$  is even. Since  $n$  is by assumption even, one readily sees that  $\mathbf{T}_{j,n}(F_j) = \mathbf{T}_{j+1,n}(F_j)$  with  $F_j = K_j \cap K_{j+1}$  for all  $j \in \{1; n-2\}$ .

We define  $\zeta_n \in \mathbf{H}(\text{curl}, K_n)$  by setting

$$(6.35) \quad \zeta_n := \mathbf{v}_n^* - \sum_{j \in \{1:n-1\}} \epsilon_{j,n} \psi_{j,n}^c(\boldsymbol{\xi}_p^{*j} - \mathbf{v}_j^*),$$

where  $\epsilon_{j,n} := \text{sign}(\det \mathbb{J}_{\mathbf{T}_{j,n}})$  and  $\psi_{j,n}^c$  is the Piola mapping associated with  $\mathbf{T}_{j,n}$ . Reasoning as above in (6.29) shows that

$$\|\zeta_n\|_{K_n} \lesssim \|\mathbf{v}^*\|_{\omega_e}.$$

It now remains to establish that  $\zeta_n \in \mathbf{V}(K_n)$  as per Definition 6.8, i.e.  $\nabla \times \zeta_n = \mathbf{r}_{K_n}$  and  $\zeta_n|_{\mathcal{F}_n} = \tilde{\mathbf{r}}_{\mathcal{F}_n}^n$  with  $\mathcal{F}_n := \{F_{n-1}, F_n\}$ . Since  $\nabla \times \boldsymbol{\xi}_p^* = \mathbf{r}_{\mathcal{T}} = \nabla \times \mathbf{v}^*$ , using (6.6) leads to  $\nabla \times \zeta_n = \nabla \times \mathbf{v}_n^* = \mathbf{r}_{K_n}$  as above in (6.30), which proves the expected condition on the curl of  $\zeta_n$ . It remains to verify the weak tangential trace condition as per Definition 6.1. To this purpose let  $\phi \in \mathbf{H}_{\tau, \mathcal{F}_n^c}^1(K_n)$  and define  $\tilde{\phi}$  by

$$(6.36) \quad \tilde{\phi}|_{K_n} := \phi, \quad \tilde{\phi}|_{K_j} := (\psi_{j,n}^c)^{-1}(\phi) \quad \forall j \in \{1 : n-1\}.$$

As  $\phi \in \mathbf{H}_{\tau, \mathcal{F}_n^c}^1(K_n)$ , its trace is defined in a strong sense, and the preservation of tangential traces by Piola mappings shows that  $\tilde{\phi} \in \mathbf{H}_{\tau, \mathcal{F}_n^c}^1(\mathcal{T}^e)$  in the sense of (6.12). Then, using  $\nabla \times \zeta_n = \nabla \times \mathbf{v}_n^*$  and (6.35), we have

$$\begin{aligned} & (\nabla \times \zeta_n, \phi)_{K_n} - (\zeta_n, \nabla \times \phi)_{K_n} \\ &= (\nabla \times \mathbf{v}_n^*, \tilde{\phi})_{K_n} - (\mathbf{v}_n^*, \nabla \times \tilde{\phi})_{K_n} + \sum_{j \in \{1:n-1\}} \epsilon_{j,n} (\psi_{j,n}^c(\boldsymbol{\xi}_p^{*j} - \mathbf{v}_j^*), \nabla \times \phi)_{K_n}, \end{aligned}$$

where we used the definition of  $\tilde{\phi}$  for the first two terms on the right-hand side. Moreover using (6.7) and (6.6) for all  $j \in \{1 : n-1\}$ , we have

$$\begin{aligned} \epsilon_{j,n} (\psi_{j,n}^c(\boldsymbol{\xi}_p^{*j} - \mathbf{v}_j^*), \nabla \times \phi)_{K_n} &= \epsilon_{j,n}^2 (\boldsymbol{\xi}_p^* - \mathbf{v}_j^*, \nabla \times ((\psi_{j,n}^c)^{-1}(\phi|_{K_n})))_{K_j} \\ &= (\boldsymbol{\xi}_p^* - \mathbf{v}_j^*, \nabla \times \tilde{\phi})_{K_j} \\ &= (\boldsymbol{\xi}_p^* - \mathbf{v}_j^*, \nabla \times \tilde{\phi})_{K_j} - (\nabla \times (\boldsymbol{\xi}_p^* - \mathbf{v}_j^*), \tilde{\phi})_{K_j}, \end{aligned}$$

since  $\nabla \times \boldsymbol{\xi}_p^* = \mathbf{r}_T = \nabla \times \mathbf{v}^*$ . It follows that

$$\begin{aligned}
 & (\nabla \times \boldsymbol{\zeta}_n, \boldsymbol{\phi})_{K_n} - (\boldsymbol{\zeta}_n, \nabla \times \boldsymbol{\phi})_{K_n} \\
 = & \sum_{j \in \{1:n\}} \left\{ (\nabla \times \mathbf{v}^*, \tilde{\boldsymbol{\phi}})_{K_j} - (\mathbf{v}^*, \nabla \times \tilde{\boldsymbol{\phi}})_{K_j} \right\} - \sum_{j \in \{1:n-1\}} \left\{ (\nabla \times \boldsymbol{\xi}_p^*, \tilde{\boldsymbol{\phi}})_{K_j} - (\boldsymbol{\xi}_p^*, \nabla \times \tilde{\boldsymbol{\phi}})_{K_j} \right\} \\
 = & (\nabla \times \boldsymbol{\xi}_p^*, \tilde{\boldsymbol{\phi}})_{K_n} - (\boldsymbol{\xi}_p^*, \nabla \times \tilde{\boldsymbol{\phi}})_{K_n} + \sum_{j \in \{1:n\}} \left\{ (\nabla \times \mathbf{v}^*, \tilde{\boldsymbol{\phi}})_{K_j} - (\mathbf{v}^*, \nabla \times \tilde{\boldsymbol{\phi}})_{K_j} \right\} \\
 & - \sum_{j \in \{1:n\}} \left\{ (\nabla \times \boldsymbol{\xi}_p^*, \tilde{\boldsymbol{\phi}})_{K_j} - (\boldsymbol{\xi}_p^*, \nabla \times \tilde{\boldsymbol{\phi}})_{K_j} \right\} \\
 = & (\nabla \times \boldsymbol{\xi}_p^*, \tilde{\boldsymbol{\phi}})_{K_n} - (\boldsymbol{\xi}_p^*, \nabla \times \tilde{\boldsymbol{\phi}})_{K_n} = (\nabla \times \boldsymbol{\xi}_p^*, \boldsymbol{\phi})_{K_n} - (\boldsymbol{\xi}_p^*, \nabla \times \boldsymbol{\phi})_{K_n} \\
 = & \sum_{F \in \mathcal{F}_n} (\tilde{\mathbf{r}}_F^n, \boldsymbol{\phi} \times \mathbf{n}_{K_n})_F,
 \end{aligned}$$

where we employed the fact that, since both  $\boldsymbol{\xi}_p^*, \mathbf{v}^* \in \mathbf{V}(\mathcal{T}^e)$ , Definition 6.3 gives

$$\begin{aligned}
 \sum_{j \in \{1:n\}} \left\{ (\nabla \times \mathbf{v}^*, \tilde{\boldsymbol{\phi}})_{K_j} - (\mathbf{v}^*, \nabla \times \tilde{\boldsymbol{\phi}})_{K_j} \right\} &= \sum_{F \in \mathcal{F}} (\mathbf{r}_F, \tilde{\boldsymbol{\phi}} \times \mathbf{n}_F)_F \\
 &= \sum_{j \in \{1:n\}} \left\{ (\nabla \times \boldsymbol{\xi}_p^*, \tilde{\boldsymbol{\phi}})_{K_j} - (\boldsymbol{\xi}_p^*, \nabla \times \tilde{\boldsymbol{\phi}})_{K_j} \right\}.
 \end{aligned}$$

Thus  $\boldsymbol{\zeta}_n|_{\mathcal{F}_n} = \tilde{\mathbf{r}}_{\mathcal{F}_n}^n$  in the sense of Definition 6.1. This establishes the weak tangential trace condition on  $\boldsymbol{\zeta}_n$  when  $n$  is even.

If  $n$  is odd, one can proceed as in [25, Section 6.3]. For the purpose of the proof only, one tetrahedron different from  $K_n$  is subdivided into two subtetrahedra as in [25, Lemma B.2]. Then the above construction of  $\boldsymbol{\zeta}_n$  can be applied on the newly created patch which has an even number of elements, and one verifies as above that  $\boldsymbol{\zeta}_n \in \mathbf{V}(K_n)$ .

**(3c)** Patch of Neumann boundary type. In this case, a similar argument as for a patch of interior type applies, and we omit the proof for the sake of brevity.

**Remark 6.10** (Quasi-optimality of  $\boldsymbol{\xi}_p^*$ ). *Let  $\boldsymbol{\xi}_p^* \in \mathbf{V}_p(\mathcal{T}^e)$  be defined in the above proof (see in particular (6.25)). Since  $\|\mathbf{v}^*\|_{\omega_e} \leq \min_{\mathbf{v}_p \in \mathbf{V}_p(\mathcal{T}^e)} \|\mathbf{v}_p\|_{\omega_e}$ , (6.26) implies that  $\|\boldsymbol{\xi}_p^*\|_{\omega_e} \lesssim \min_{\mathbf{v}_p \in \mathbf{V}_p(\mathcal{T}^e)} \|\mathbf{v}_p\|_{\omega_e}$  (note that the converse inequality is trivial with constant one). This elementwise minimizer is the one used in the simplified a posteriori estimator (3.11b).*

## REFERENCES

1. F. Assous, P. Ciarlet, Jr., and S. Labrunie, *Mathematical foundations of computational electromagnetism*, Applied Mathematical Sciences, vol. 198, Springer, Cham, 2018. MR 3793186
2. R. Beck, R. Hiptmair, R. H. W. Hoppe, and B. Wohlmuth, *Residual based a posteriori error estimators for eddy current computation*, M2AN Math. Model. Numer. Anal. **34** (2000), no. 1, 159–182. MR 1735971
3. J. Blechta, J. Málek, and M. Vohralík, *Localization of the  $W^{-1,q}$  norm for local a posteriori efficiency*, IMA J. Numer. Anal. **40** (2020), no. 2, 914–950.



4. A. Bossavit, *Computational electromagnetism*, Electromagnetism, Academic Press, Inc., San Diego, CA, 1998, Variational formulations, complementarity, edge elements. MR 1488417
5. D. Braess, V. Pillwein, and J. Schöberl, *Equilibrated residual error estimates are  $p$ -robust*, *Comput. Methods Appl. Mech. Engrg.* **198** (2009), no. 13-14, 1189–1197. MR 2500243
6. D. Braess and J. Schöberl, *Equilibrated residual error estimator for edge elements*, *Math. Comp.* **77** (2008), no. 262, 651–672. MR 2373174 (2008m:65313)
7. T. Chaumont-Frelet, A. Ern, and M. Vohralík, *Polynomial-degree-robust stability of discrete minimization over a tetrahedron in  $\mathbf{H}(\text{curl})$* , HAL Preprint 02631319, submitted for publication, 2020.
8. S.-K. Chua and R. L. Wheeden, *Estimates of best constants for weighted Poincaré inequalities on convex domains*, *Proc. London Math. Soc. (3)* **93** (2006), no. 1, 197–226. MR MR2235947 (2006m:26030)
9. M. Costabel, M. Dauge, and S. Nicaise, *Singularities of Maxwell interface problems*, *M2AN Math. Model. Numer. Anal.* **33** (1999), no. 3, 627–649. MR 1713241
10. M. Costabel and A. McIntosh, *On Bogovskii and regularized Poincaré integral operators for de Rham complexes on Lipschitz domains*, *Math. Z.* **265** (2010), no. 2, 297–320. MR 2609313 (2011f:58030)
11. E. Creusé, Y. Le Menach, S. Nicaise, F. Piriou, and R. Tittarelli, *Two guaranteed equilibrated error estimators for harmonic formulations in eddy current problems*, *Comput. Math. Appl.* **77** (2019), no. 6, 1549–1562. MR 3926828
12. E. Creusé, S. Nicaise, and R. Tittarelli, *A guaranteed equilibrated error estimator for the  $\mathbf{A} - \varphi$  and  $\mathbf{T} - \Omega$  magnetodynamic harmonic formulations of the Maxwell system*, *IMA J. Numer. Anal.* **37** (2017), no. 2, 750–773. MR 3649425
13. P. Daniel, A. Ern, I. Smears, and M. Vohralík, *An adaptive  $hp$ -refinement strategy with computable guaranteed bound on the error reduction factor*, *Comput. Math. Appl.* **76** (2018), no. 5, 967–983.
14. L. Demkowicz, *Computing with  $hp$ -adaptive finite elements. Vol. 1*, Chapman & Hall/CRC Applied Mathematics and Nonlinear Science Series, Chapman & Hall/CRC, Boca Raton, FL, 2007, One and two dimensional elliptic and Maxwell problems, With 1 CD-ROM (UNIX). MR 2267112
15. L. Demkowicz, J. Gopalakrishnan, and J. Schöberl, *Polynomial extension operators. Part I*, *SIAM J. Numer. Anal.* **46** (2008), no. 6, 3006–3031. MR 2439500 (2009j:46080)
16. ———, *Polynomial extension operators. Part II*, *SIAM J. Numer. Anal.* **47** (2009), no. 5, 3293–3324. MR 2551195 (2010h:46043)
17. ———, *Polynomial extension operators. Part III*, *Math. Comp.* **81** (2012), no. 279, 1289–1326. MR 2904580
18. P. Destuynder and B. Métivet, *Explicit error bounds in a conforming finite element method*, *Math. Comp.* **68** (1999), no. 228, 1379–1396. MR 1648383 (99m:65211)
19. C. Dobrzynski, *MMG3D: User guide*, Tech. Report 422, Inria, France, 2012.
20. W. Dörfler, *A convergent adaptive algorithm for Poisson’s equation*, *SIAM J. Numer. Anal.* **33** (1996), no. 3, 1106–1124. MR 1393904 (97e:65139)
21. A. Ern, T. Gudi, I. Smears, and M. Vohralík, *Equivalence of local- and global-best approximations, a simple stable local commuting projector, and optimal  $hp$  approximation estimates in  $\mathbf{H}(\text{div})$* , HAL Preprint 02268960, submitted for publication, 2020.
22. A. Ern and J.-L. Guermond, *Finite elements I: Approximation and interpolation*, Springer-Verlag, New York, 2020, In press.
23. ———, *Finite elements II: Galerkin approximation and elliptic PDEs*, Springer-Verlag, New York, 2020, In press.
24. A. Ern and M. Vohralík, *Polynomial-degree-robust a posteriori estimates in a unified setting for conforming, nonconforming, discontinuous Galerkin, and mixed discretizations*, *SIAM J. Numer. Anal.* **53** (2015), no. 2, 1058–1081. MR 3335498
25. ———, *Stable broken  $H^1$  and  $\mathbf{H}(\text{div})$  polynomial extensions for polynomial-degree-robust potential and flux reconstruction in three space dimensions*, *Math. Comp.* **89** (2020), no. 322, 551–594.

26. P. Fernandes and G. Gilardi, *Magnetostatic and electrostatic problems in inhomogeneous anisotropic media with irregular boundary and mixed boundary conditions*, Math. Models Methods Appl. Sci. **7** (1997), no. 7, 957–991. MR 1479578
27. J. Gedicke, S. Geevers, and I. Perugia, *An equilibrated a posteriori error estimator for arbitrary-order Nédélec elements for magnetostatic problems*, arXiv preprint 1909.01853, 2019.
28. J. Gedicke, S. Geevers, I. Perugia, and J. Schöberl, *A polynomial-degree-robust a posteriori error estimator for Nédélec discretizations of magnetostatic problems*, arXiv preprint 2004.08323, 2020.
29. V. Girault and P.-A. Raviart, *Finite element methods for Navier-Stokes equations*, Springer Series in Computational Mathematics, vol. 5, Springer-Verlag, Berlin, 1986, Theory and algorithms. MR MR851383 (88b:65129)
30. A. Hannukainen, *Functional type a posteriori error estimates for Maxwell's equations*, Numerical mathematics and advanced applications, Springer, Berlin, 2008, pp. 41–48. MR 3615865
31. M. W. Licht, *Higher-order finite element de Rham complexes, partially localized flux reconstructions, and applications*, preprint available at <http://www.math.ucsd.edu/~mlicht/pdf/preprint.hoflux.pdf>, 2019.
32. R. Luce and B. I. Wohlmuth, *A local a posteriori error estimator based on equilibrated fluxes*, SIAM J. Numer. Anal. **42** (2004), no. 4, 1394–1414. MR 2114283 (2006d:65122)
33. P. Monk, *Finite element methods for Maxwell's equations*, Numerical Mathematics and Scientific Computation, Oxford University Press, New York, 2003. MR 2059447
34. R. Muñoz Sola, *Polynomial liftings on a tetrahedron and applications to the  $h$ - $p$  version of the finite element method in three dimensions*, SIAM J. Numer. Anal. **34** (1997), no. 1, 282–314. MR 1445738
35. J.-C. Nédélec, *Mixed finite elements in  $\mathbb{R}^3$* , Numer. Math. **35** (1980), no. 3, 315–341. MR MR592160 (81k:65125)
36. P. Neittaanmäki and S. Repin, *Guaranteed error bounds for conforming approximations of a Maxwell type problem*, Applied and numerical partial differential equations, Comput. Methods Appl. Sci., vol. 15, Springer, New York, 2010, pp. 199–211. MR 2642690
37. S. Nicaise and E. Creusé, *A posteriori error estimation for the heterogeneous Maxwell equations on isotropic and anisotropic meshes*, Calcolo **40** (2003), no. 4, 249–271. MR 2025712
38. W. Prager and J. L. Synge, *Approximations in elasticity based on the concept of function space*, Quart. Appl. Math. **5** (1947), 241–269. MR MR0025902 (10,81b)
39. P.-A. Raviart and J.-M. Thomas, *A mixed finite element method for 2nd order elliptic problems*, Mathematical aspects of finite element methods (Proc. Conf., Consiglio Naz. delle Ricerche (C.N.R.), Rome, 1975), Springer, Berlin, 1977, pp. 292–315. Lecture Notes in Math., Vol. 606. MR MR0483555 (58 #3547)
40. S. Repin, *Functional a posteriori estimates for Maxwell's equation*, J. Math. Sci. (N.Y.) **142** (2007), no. 1, 1821–1827, Problems in mathematical analysis. No. 34. MR 2331641
41. C. Schwab,  *$p$ - and  $hp$ -finite element methods*, Numerical Mathematics and Scientific Computation, The Clarendon Press, Oxford University Press, New York, 1998, Theory and applications in solid and fluid mechanics. MR 1695813
42. A. Veiser and R. Verfürth, *Poincaré constants for finite element stars*, IMA J. Numer. Anal. **32** (2012), no. 1, 30–47. MR 2875242 (2012m:65444)
43. M. Vohralík, *Guaranteed and fully robust a posteriori error estimates for conforming discretizations of diffusion problems with discontinuous coefficients*, J. Sci. Comput. **46** (2011), no. 3, 397–438. MR 2765501 (2012a:65297)