



**HAL**  
open science

# Sparsity-based audio declipping methods: overview, new algorithms, and large-scale evaluation

Clément Gaultier, Srđan Kitić, Rémi Gribonval, Nancy Bertin

## ► To cite this version:

Clément Gaultier, Srđan Kitić, Rémi Gribonval, Nancy Bertin. Sparsity-based audio declipping methods: overview, new algorithms, and large-scale evaluation. 2020. hal-02611226v1

**HAL Id: hal-02611226**

**<https://inria.hal.science/hal-02611226v1>**

Preprint submitted on 18 May 2020 (v1), last revised 28 Jan 2021 (v3)

**HAL** is a multi-disciplinary open access archive for the deposit and dissemination of scientific research documents, whether they are published or not. The documents may come from teaching and research institutions in France or abroad, or from public or private research centers.

L'archive ouverte pluridisciplinaire **HAL**, est destinée au dépôt et à la diffusion de documents scientifiques de niveau recherche, publiés ou non, émanant des établissements d'enseignement et de recherche français ou étrangers, des laboratoires publics ou privés.

# Sparsity-based audio declipping methods: overview, new algorithms, and large-scale evaluation

Clément Gaultier, Srđan Kitić, Rémi Gribonval, *Fellow, IEEE*, and Nancy Bertin, *Member, IEEE*

**Abstract**—Recent advances in audio declipping have substantially improved the state of the art in certain saturation regimes. Yet, practitioners need guidelines to choose a method, and while existing benchmarks have been instrumental in advancing the field, larger-scale experiments are needed to guide such choices. First, we show that the saturation levels in existing small-scale benchmarks are moderate and call for benchmarks with more perceptually significant saturation levels. We then propose a general algorithmic framework for declipping that covers existing and new combinations of flavors of state-of-the-art techniques exploiting time-frequency sparsity: synthesis vs analysis sparsity, with plain or structured sparsity. Finally, we systematically compare these combinations and state-of-the-art methods. Using a large-scale numerical benchmarks and a smaller scale formal listening test, we provide guidelines for various saturation levels, both for speech and various musical “genres” from the RWC database. The code is made publicly available for the purpose of reproducible research and benchmarking.

**Index Terms**—audio declipping, sparsity, structured sparsity, time-frequency, listening test.

## I. INTRODUCTION

Clipping, also known as saturation, is a common phenomenon that can arise from hardware or software limitations in any audio acquisition pipeline. It results in severely distorted audio recordings. Magnitude saturation can occur at different steps in the acquisition, reproduction or analog-to-digital conversion process. Restoring a saturated signal is of great interest for many applications in digital communications, image processing or audio. In the latter, while light to moderate clipping causes only some audible clicks and pops, more severe saturation highly affects original signals, contaminating sound with rattle noise. The perceived degradation depends on the clipping level and the original signal, and it can lead to significant loss in perceived audio quality [1]. More recently, studies [2], [3] also showed the negative impact of clipped signals when used in signal-processing pipelines for recognition, transcription or classification.

The idealized hard-clipping model is a simple yet accurate approximation of the magnitude saturation and allows to easily identify the clipped and reliable samples. Denoting  $\mathbf{x} \in \mathbb{R}^L$  a clean original discrete signal, a saturated version  $\mathbf{y} \in \mathbb{R}^L$  is modeled with the following:

$$\mathbf{y}_i = \begin{cases} \mathbf{x}_i & \text{when } |\mathbf{x}_i| \leq \tau; \\ \text{sgn}(\mathbf{x}_i)\tau & \text{otherwise;} \end{cases} \quad (1)$$

N. Bertin is with Univ Rennes, CNRS, Inria, IRISA. All authors were with Univ Rennes, CNRS, Inria, IRISA when this work started. C. Gaultier and S. Kitić are now with Orange. R. Gribonval is now with Univ Lyon, Inria, CNRS, ENS de Lyon, UCB Lyon 1, LIP UMR 5668, F-69342, Lyon, France.

with  $y_i$  (resp.  $x_i$ ) a sample from  $\mathbf{y}$  (resp.  $\mathbf{x}$ ) and  $\tau$  the hard-clipping level. This is illustrated on Figure 1. In real settings where softer saturation occurs, this model can be enforced with appropriate data pre-processing.

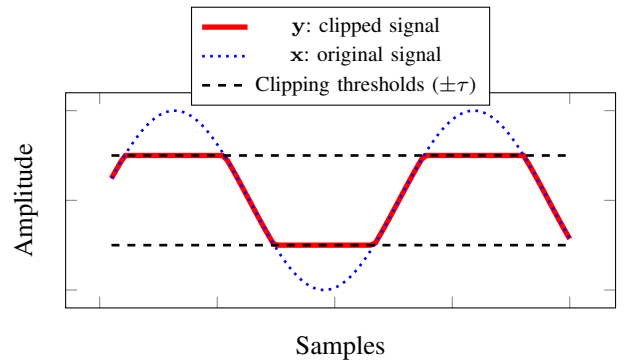


Figure 1. Hard-clipping model (1)

The terms *declipping* and *desaturation* are equally employed to denote the tentative inversion of this process, aiming at restoring the original signal  $\mathbf{x}$  in its full dynamics and quality, from the sole knowledge of its degraded version  $\mathbf{y}$ . This task has gained a lot of attention in the last decade, as effective approaches based on sparse regularization techniques flourished [3]–[6]. After this accumulation of progress, the domain now seems mature enough to address much more severe levels of degradation than those considered in early work. Such an ambition is all the more crucial than real-world applications require to consider such ranges where saturation is prominently audible, as we will show later.

In parallel, limited steps have been made towards evaluation on a common data set. Comparisons have been made possible to some extent by the use of sound excerpts from the SMALLbox toolbox [7] as experimental material of many works in the field, from the pioneering ones [4], [5] to most recent algorithms [8], [9]. This freely available data set<sup>1</sup> was itself extracted from the SiSEC evaluation campaign [10] and is sometimes referred to as “the SMALL data set”. It includes twenty 5-second excerpts (10 speech, 10 music) sampled at 16 kHz (and ten additional 8 kHz speech excerpts unsuited for declipping applications), with a necessarily limited diversity, although effort has been put to cover the largest possible spectrum. On the other hand, some other authors gathered their own data [3], [6], [11]. Thus, a large-scale and systematic evaluation of the numerous variants of these algorithms on common data was, to date, still to be accomplished.

<sup>1</sup><http://small.inria.fr/software-data.html>, “Audio Inpainting Toolbox”

In order to carry out the needed systematic and large-scale benchmarking of time-frequency single-channel audio declipping algorithms, this paper introduces a new joint modeling and algorithmic framework, mimicking many existing algorithms and encompassing new combinations of the various ideas introduced by them (sparse and cosparsity models, plain or structured sparsity). As a motivational prologue, section II discusses the objective measures of saturation levels, which puts to light the incompleteness of previous evaluations, and identifies the perceptually relevant saturation levels that real-world applications need to target. After recalling the main ingredients of state-of-the-art algorithms in section III, we present our framework in section IV and show how it allows i) to mimic existing algorithms, ii) to formulate new combinations and iii) to handily conduct systematic experiments. The versatility of the framework is illustrated in section V on small-scale and large-scale experiments, evaluated with objective performance measures, perceptual scores, and a listening test. From these experiments, in the final section, we contribute guidelines for declipping practice and evaluation methodology, together with future insights.

## II. HOW TO QUANTIFY SATURATION?

Quantifying the consequence of saturation can be itself an interesting problem. Even looking at the degradation from a signal perspective only can lead to various interpretations whether one focuses on the clipping threshold, the distortion or the amount of affected samples. In the following, we compare these usual saturation rating indexes and provide clipping scales where perceptual differences are of interest.

### A. Objectives measures of saturation

Commonly [3]–[6], saturation is directly rated from the clipping threshold ( $\tau$  on Figure 1) as it reflects how importantly the dynamic range of the signal is affected. The lower  $\tau$ , the more severe the degradation. Practically, studies usually work with normalized magnitude data for fair comparisons, and the clipping threshold takes values in  $[0; 1]$ . This value is also referred to as “clipping level”.

Another tool to quantify clipping is the relative level of distortion, measured by the Signal-to-Distortion Ratio in decibels:

$$\text{SDR} = 10 \cdot \log_{10} \left( \frac{\|\mathbf{x}\|_2^2}{\|\mathbf{x} - \mathbf{y}\|_2^2} \right). \quad (2)$$

Contrarily to the clipping threshold  $\tau$ , the SDR is highly linked to the content of the initial signal  $\mathbf{x}$  as its computation takes into account the energy of the signal.

In the limit case where the signal is not distorted at all,  $\mathbf{y} = \mathbf{x}$  and the SDR tends to its maximum value  $+\infty$  dB. In the other extreme case, when the clipping level  $\tau$  tends to zero,  $\mathbf{y}$  tends to zero and only retains the sign of the samples of  $\mathbf{x}$ . In this limit, the energy of the induced distortion  $\|\mathbf{x} - \mathbf{y}\|_2^2$  is as large as the initial signal energy  $\|\mathbf{x}\|_2^2$  and the SDR tends to its minimum value 0 dB.

SDR and clipping threshold are measures that require either an original clean signal to compare with or the initial dynamic range. There exists also a mean to estimate the seriousness

of the degradation without any reference: by counting the “proportion” of a signal that is affected by clipping. In a discrete setting, this boils down to counting the proportion of clipped samples over the complete signal. This “ratio of clipped samples” can be denoted

$$\%_{\text{Clipped}} = \frac{|\{i \in (1, \dots, L_{\text{total}}) \mid |\mathbf{x}_i| \geq \tau\}|}{L_{\text{total}}} \quad (3)$$

where here  $L_{\text{total}}$  denotes the total number of samples. The higher this ratio is, the more significant will be the loss as more samples are affected. Even if this measure can be of great interest to blindly estimate the power of the degradation, it is rarely used in studies, as it is not suited for direct comparisons or assessing enhancement.

### B. Perceptually motivated quality measures

As for every study involving audio content, numerical indexes used to rate a degradation are relevant if they correlate somehow to subjective quality ratings. Unlike denoising, few studies focused on finding objective numerical descriptors to rate the quality of saturated audio excerpts. Some years ago, [12] validated the correlation between PEAQ scores [13] and clipped audio quality assessments thanks to listening tests. In the following, we will briefly investigate the relationship between clipping thresholds, SDR, PEAQ for music and MOS-PESQ [14] for speech to identify a degradation range of interest. These preliminary comparisons are held on the SMALL examples. Let us recall that PEAQ scores are adapted to music excerpts and ranges from  $-4$  to  $0$ . The closer the value is from  $-4$ , the more annoying the clipping consequences will be perceived. PESQ scores for speech excerpts ranges from  $1$  (bad quality) to  $5$  (excellent quality).

### C. Perceptual relevance: clipping threshold vs SDR

Considering what “simple” quality measure should be used to describe the strength of the degradation caused by clipping, two main options are available: i) clipping threshold or SDR if a reference signal is available; ii) ratio of clipped samples otherwise. Since we focus in this paper on benchmarking declipping methods in a controlled setting, it is natural to focus on the first option.

As could be expected, and as shown on Figure 2a and Figure 3a on the SMALL data set, the SDR is overall an increasing function of the clipping level. Yet, it remains highly variable as a function of the audio content and its temporal structure. Indeed, for a given clipping level, a signal with high dynamic will lose a limited number of samples, while more samples will be clipped in a signal whose magnitude values are more uniformly distributed.

To compare the perceptual relevance of the clipping level and the SDR, Figure 2c and Figure 2b (resp. Figure 3c and Figure 3b) display the PEAQ (resp. PESQ) objective quality measure as a function of these two criteria, on SMALL music (resp. speech) examples, artificially hard-clipped with clipping levels between  $0.1$  and  $0.9$ . As expected, for both speech and music, the estimated rated quality overall increases with the clipping level and with the SDR. However, as can be observed

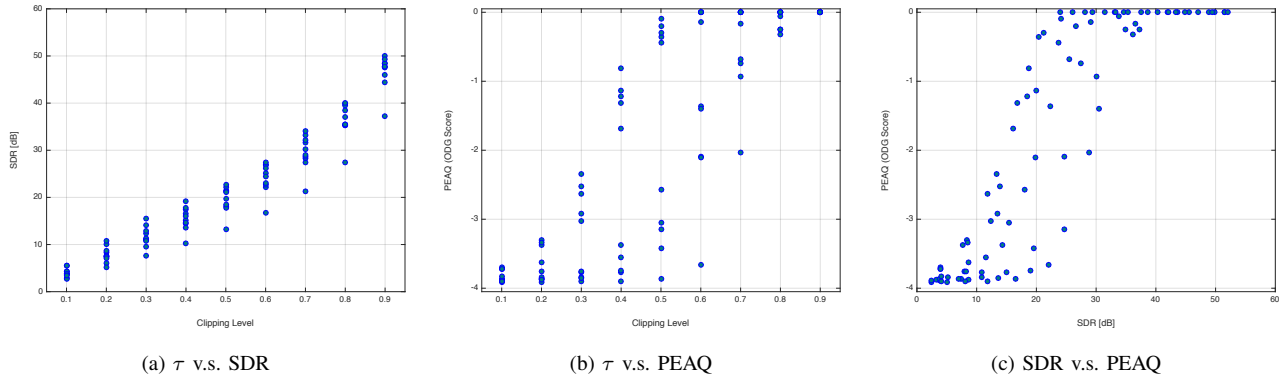


Figure 2. Clipping measures comparisons (*SMALLbox music examples*)

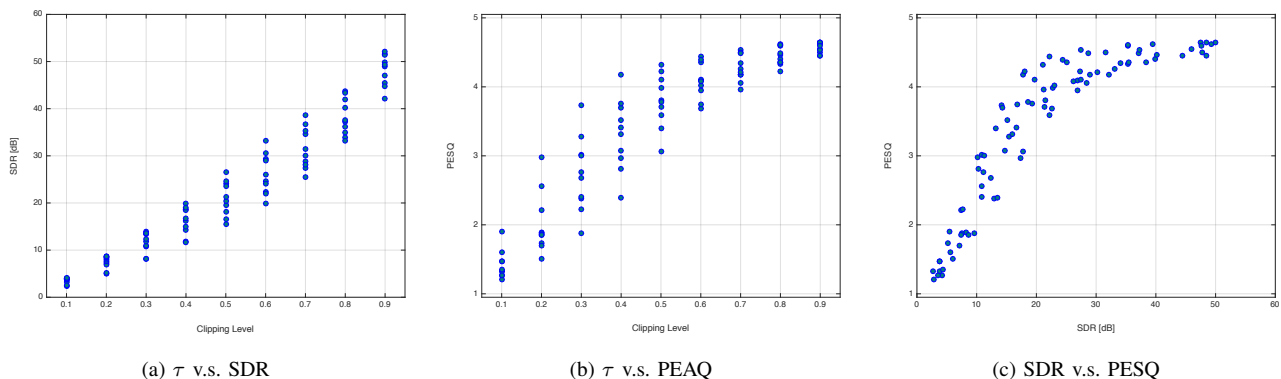


Figure 3. Clipping measures comparisons (*SMALLbox speech examples*)

on Figure 2c and Figure 3c, both PEAQ and PESQ values are highly variable for a given clipping level, except for the most extreme values. What is even more striking for music is that quality, as measured by PEAQ, stabilizes around its maximum (*imperceptible* degradation) when the SDR roughly exceeds 30 dB. To some extent, a similar behaviour is observed for PESQ values on speech. This suggests to focus on the SDR rather than the clipping threshold as a primary measure of the saturation level of the initial signal.

#### D. Perceptually relevant degradation ranges

In light of Figure 2a, it appears that most of the *SMALL* music examples with clipping level above 0.6 correspond to an SDR of 30dB or more, corresponding to potentially imperceptible degradation. Moreover, as the state of the art in audio declipping shows high potential for the restoration of highly degraded signals, it becomes legitimate to consider test cases involving initial SDRs below 30 dB in priority.

#### E. Choice of performance measure

In addition to previous observations, we can note that SDR is a measure affected only by saturated regions of the signal. Indeed, energy on the reliable parts of the signal will remain the same. Plus, as long as clipping consistency is used for desaturation, this energy will not change either on the processed signal reliable parts. If we consider that higher

amplitude samples (hence higher energy portions of a signal) will be affected by clipping, having a degradation measure able to specifically target the changes for these portions should probably be preferred over a measure providing an overall value (like clipping level or ratio of clipped samples). These insights on clipping effects and quantification drive our choice to use the SDR difference between the clipped and the recovered signal ( $\Delta$ SDR) as our main enhancement measurement in the following.

### III. PRIOR ART ON AUDIO DECLIPPING

While we can trace back to several decades ago some attempts to address declipping, *e.g.* with autoregressive models [15], significant progress towards efficient desaturation was made in the last decade by combining ideas from inverse problems and sparse regularization.

#### A. Declipping as a linear inverse problem

The declipping problem can be cast as an *undetermined, linear inverse problem*, akin to *inpainting*, which can be addressed by means of *sparse* regularization in the time-frequency domain using, *e.g.*, a two-stage algorithm based on Orthogonal Matching Pursuit (OMP) [4]. In a first stage, the active time-frequency atoms of the sparse representation are greedily identified using OMP on the “reliable” samples of the

signal (*i.e.*, the samples which have been observed without saturation, *cf.* Eq. (1)). Then, a declipping constraint is imposed in the transformed domain so the name *Constrained Orthogonal Matching Pursuit*. Besides such greedy algorithms, lines of work involving convex optimization have been investigated, *e.g.* using  $\ell_1$  norm minimization and a perceptually oriented sparse representation to perform the reconstruction [12], or  $\ell_2$  regularization for alleviating the effect of clipping in automated speech recognition [3]. More recently, a method based on linearly or quadratically constrained weighted least-squares was introduced [16] to tackle a relaxed version of declipping (compression, or soft-clipping, compensation).

### B. Consistency constraint & time-frequency models

Besides the exploitation of time-frequency sparsity, a crucial step to improve the efficiency of declipping was the incorporation of the full clipping model (1) *within* the iterations of the sparse regularization algorithm [11]. For this, every iteration relies on a so-called *clipping consistency* constraint (already present in [4] but only as a final step) designed to make sure that the reliable parts of the observed clipped signal match those of the reconstructed one. This was shown to drastically improve reconstruction performance and to the current knowledge, all state-of-the-art declipping methods are using this strategy. Technical details on techniques to enforce such consistency constraints will be given in Section IV.

### C. Sparse & structured time-frequency signal models

In parallel, a shift from a (now) traditional *sparse synthesis* approach to *sparse analysis* was proposed [17], as well as some model refinements exploiting notions of *structured sparsity*, especially that of *social sparsity* [18] in the time-frequency domain [5]. Contrarily to [4], [11], [17], which rely on frame-based processing and overlap-add for reconstruction, this last line of work processes complete recordings to find relevant clusters in the time-frequency plane.

1) *Plain sparsity, analysis vs synthesis*: The *sparse synthesis model* assumes that the signal of interest  $\mathbf{x}$  is built from a linear combination of atoms aggregated in a large dictionary  $\mathbf{D}$ . We could more precisely write

$$\mathbf{x} = \mathbf{D}\mathbf{z} \quad (4)$$

with  $\mathbf{x} \in \mathbb{R}^L$  the time domain signal (or a windowed frame extracted from this signal),  $\mathbf{D} \in \mathbb{C}^{L \times S}$  the dictionary and  $\mathbf{z} \in \mathbb{C}^S$  a sparse representation of the vector  $\mathbf{x}$  ( $S \geq L$ ). This model considers that  $\|\mathbf{z}\|_0$ , the number of non-zero coefficients in  $\mathbf{z}$ , is very small compared to the size  $S$  of the vector. In other words, one needs very few atoms of  $\mathbf{D}$  to synthesize  $\mathbf{x}$  from  $\mathbf{z}$ .

While synthesis approaches comprise a vast majority of the sparsity-based time-frequency regularization techniques, it has been demonstrated in [19] and more recently in [17], [20] that the *analysis sparse model*, also known as the *cosparse model*, can turn out to be advantageous in certain settings, in particular in terms of computational cost. Instead of *implicitly* defining a sparse representation  $\mathbf{z}$  of the signal  $\mathbf{x}$  through the sparse

synthesis model  $\mathbf{x} = \mathbf{D}\mathbf{z}$ , the rationale of the *cosparse model* is to *explicitly* assume that

$$\mathbf{z} = \mathbf{A}\mathbf{x} \quad (5)$$

is sparse, where  $\mathbf{A} \in \mathbb{C}^{P \times L}$  is called the analysis operator ( $P \geq L$ ). Models are equivalent when  $P = S = L$  and  $\mathbf{A}\mathbf{D} = \mathbf{I}$ .

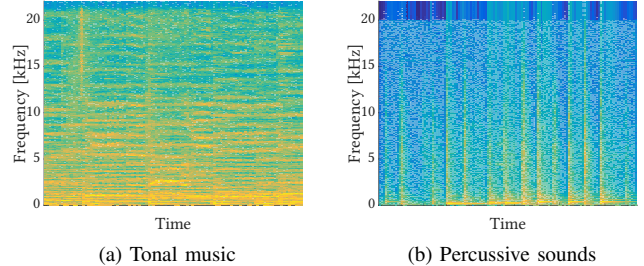


Figure 4. STFT magnitude representation of two music signals

2) *Structured (co)sparse time-frequency models*: Plain synthesis sparse models as defined in (4) somehow assume that each coefficient in the sparse representation can be active or inactive independently from the others. However, in the context of audio time-frequency modeling one can argue that coefficients are rather arranged in groups as shown in Figure 4. In a tonal musical excerpt (Figure 4a) high energy coefficients are structured across time in the spectrogram, reflecting the strong presence of harmonics; in a percussive music sample spectrogram (Figure 4b), the dominant coefficients gather across frequency due to transients and beats. Structured forms of sparsity such as group sparsity [21], [22] or social sparsity [18], [23] have emerged as useful refinements to take into account such typical time-frequency patterns of audio signals.

Consider the matrix  $\mathbf{X} \in \mathbb{R}^{L \times T}$  which columns are the windowed frames of an original time-domain audio signal and  $\mathbf{Z} \in \mathbb{C}^{S \times T}$  a matrix which columns are a frequency representation of these frames. In other words, this matrix is a time-frequency representation of the underlying audio signal. In structured sparse models, the assumed relation between  $\mathbf{Z}$  and  $\mathbf{X}$  becomes:

<p><b>Structured analysis model</b></p> $\mathbf{A} \in \mathbb{C}^{P \times L}, P \geq L$ $\mathbf{Z} \simeq \mathbf{A}\mathbf{X}, \mathbf{Z} \in \mathbb{C}^{P \times T}$ $\ \mathbf{Z}\ _0 \ll P \times T$ $\mathbf{Z} \text{ is "structured"}$	<p><b>Structured synthesis model</b></p> $\mathbf{D} \in \mathbb{C}^{L \times S}, S \geq L$ $\mathbf{D}\mathbf{Z} \simeq \mathbf{X}, \mathbf{Z} \in \mathbb{C}^{S \times T}$ $\ \mathbf{Z}\ _0 \ll S \times T$ $\mathbf{Z} \text{ is "structured"}$
--	---

Considering *non-overlapping* groups of indexes in  $\mathbf{Z}$ , *group sparsity* assumes that if some coefficient of the matrix is zero, then all coefficients at indexes belonging to the same group must be also zero, while in “active” groups, no sparsity is required. This prior is typically enforced by expressing optimization problems involving mixed-norms such as the  $\ell_{2,1}$  norm. Optimization algorithms to address such minimization problems typically involve structured thresholding operators. *Social sparsity* extends group sparsity to the case of possibly overlapping groups, and also allows more flexible structures through the use of generic time-frequency patterns. This



prior is typically enforced in iterative algorithms with the use of appropriate specific sparsity-promoting operators using dependencies between coefficients.

#### IV. PROPOSED APPROACH

In this section, we present a general framework using either simple sparse modeling (analysis or synthesis based) or structured sparse priors to address the audio declipping problem. Given a matrix  $\mathbf{Y} \in \mathbb{R}^{L \times T}$  which columns are the windowed frames of a clipped time-domain audio signal  $\mathbf{y}$ , our goal is to recover an estimate  $\hat{\mathbf{X}}$  of the frames  $\mathbf{X}$  of the original signal. To this end, one seeks  $\hat{\mathbf{X}}$  satisfying:

- the modeling constraints described in subsection III-C;
- a data fidelity constraint with respect to  $\mathbf{Y}$ , according to some distortion model (clipping).

This is the spirit of the algorithmic framework we develop. It relies on two components:

- a *shrinkage* enforcing (structured) sparsity;
- a *generalized projection* onto the clipping-consistent data-fidelity constraint.

Before further describing these components in the rest of this section, we formalize some notational conventions. In the following, lower-case Greek symbols ( $\varepsilon$ ) stands for scalar constant. Lower-case sans serif font ( $i$ ) denotes an integer. Lower-case bold font ( $\mathbf{v}$ ) expresses a vector and upper-case ( $\mathbf{V}$ ) a matrix.  $\mathbf{v}_i$  is an  $i^{\text{th}}$  element of a vector and  $\mathbf{v}^{(i)}$  an  $i^{\text{th}}$  iterate.  $\Theta$  is used for a set.  $\mathcal{O}$  stands for a non-linear operator and  $F$  a function.  $\mathbf{V}_{(ij)}$  represents the component of the matrix  $\mathbf{V}$  indexed the  $i^{\text{th}}$  row and  $j^{\text{th}}$  column. Finally,  $\mathbf{V}^H$  denotes the Hermitian transpose of a matrix  $\mathbf{V}$ . Curved relation symbols ( $\preceq, \succ, \prec, \succ$ ) are used for entry-wise comparisons between matrices. Other notations will be disambiguated in the text.

##### A. Sparsity-promoting shrinkage operators

Shrinkage operators, also known as “thresholding rules” [24], promote sparsity by reducing the magnitude of their input and possibly setting it to zero.

**Definition 1** (Shrinkage).  $\mathcal{S}(\cdot)$ , is a shrinkage iff:

- 1)  $\mathcal{S}(\cdot)$  is an odd function;
- 2)  $0 \leq \mathcal{S}(x) \leq x$ , for all  $x \in \mathbb{R}^+$ .
- 3)  $(\mathcal{S}(\cdot))_+$  is nondecreasing on  $\mathbb{R}^+$  and  $\lim_{x \rightarrow +\infty} (\mathcal{S}(x))_+ = +\infty$ , where  $(\cdot)_+ := \max(\cdot, 0)$ .

When applied to a (time-frequency) matrix, and written  $\mathcal{S}(\mathbf{Z})$ , shrinkage is applied entry-wise. Different shrinkage operators have been proposed depending on the sparse prior to account for (*i.e.* plain or structured sparsity). These shrinkage operators are presented below.

*a) Plain sparsity:* The hard-thresholding operator (HT)  $\mathcal{H}_k(\mathbf{Z})$  preserves the  $k$  coefficients of largest magnitude in  $\mathbf{Z}$  and sets the other ones to zero [25]. It can be used to enforce plain time-frequency sparsity, either analysis or synthesis.

*b) Social (time-frequency) sparsity:* The Persistent Empirical Wiener (PEW) operator [24] was successfully used in [5] for audio declipping using (synthesis) social sparsity. This shrinkage promotes specific local time-frequency patterns around each time-frequency point. Its specification explicitly requires choosing a time-frequency pattern described as a matrix  $\Gamma \in \mathbb{R}^{(2F+1) \times (2T+1)}$  with binary entries. Rows of  $\Gamma$  account for the frequency dimension and columns for the time dimension, in *local time-frequency coordinates*. Let  $\mathbf{Z}$  be a time-frequency representation. As illustrated on Figure 5, consider  $ft$  the coordinates of a time-frequency point in  $\mathbf{Z}$  ( $f$  is a frequency index,  $t$  the index of a windowed frame) and  $\mathbf{P}_{ft} := [f-F, f+F] \times [t-T, t+T]$  the indices corresponding to a time-frequency patch of size  $(2F+1) \times (2T+1)$  centered at time-frame  $t$  and frequency  $f$ . The matrix  $\mathbf{Z}_{\mathbf{P}_{ft}} \in \mathbb{C}^{(2F+1) \times (2T+1)}$  is extracted from  $\mathbf{Z}$  on these indices, with mirror-padding on the borders if needed.

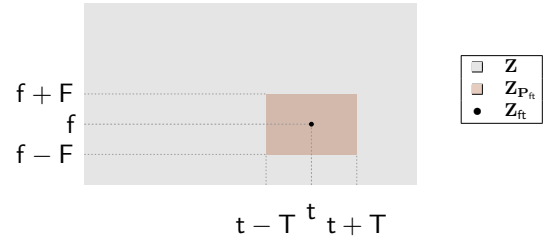


Figure 5. Schematic representation of patch extraction from matrix  $\mathbf{Z}$

Now, given a thresholding parameter  $\mu \geq 0$ , we can define the PEW shrinkage operator  $\mathcal{S}_\mu^{\text{PEW}}$ . Denoting  $\circ$  the (Hadamard) entrywise product and  $(\cdot)_+ = \max(\cdot, 0)$  the positive part:

$$\mathcal{S}_\mu^{\text{PEW}}(\mathbf{Z}|\Gamma)_{ft} := \mathbf{Z}_{ft} \cdot \left( 1 - \frac{\mu^2}{\|\mathbf{Z}_{\mathbf{P}_{ft}} \circ \Gamma\|_2^2} \right)_+ \quad (6)$$

Since  $\|\mathbf{Z}_{\mathbf{P}_{ft}} \circ \Gamma\|_2^2$  is the energy of  $\mathbf{Z}$  restricted to a time-frequency neighborhood of  $ft$  of shape specified by  $\Gamma$ , the left hand side is zero as soon as this energy falls below  $\mu^2$ . As such, PEW shrinkage effectively promotes structured sparsity.

**Remark.** To use similar notations for plain and social sparsity, in the case of analysis (*resp.* synthesis) plain sparse modeling with  $\mathbf{A} \in \mathbb{C}^{P \times L}$  a forward frequency analysis operator (*resp.*  $\mathbf{D} \in \mathbb{C}^{L \times S}$  a dictionary) we denote  $\mathcal{S}_\mu := \mathcal{H}_{P-\mu}$  (*resp.*  $\mathcal{S}_\mu := \mathcal{H}_{S-\mu}$ ), for  $\mu \in \mathbb{N}^+$ ,  $0 \leq \mu \leq P$  (*resp.*  $0 \leq \mu \leq S$ ). Hence, the smaller  $\mu$ , the less thresholding is performed. The large  $\mu$ , the sparser the result of both  $\mathcal{S}_\mu(\cdot)$  and  $\mathcal{S}_\mu^{\text{PEW}}(\cdot|\Gamma)$ . In all cases,  $\mu$  is thus a parameter controlling the strength of the performed shrinkage, which is stronger when  $\mu$  is larger.

Examples of time-frequency patterns  $\Gamma$  chosen for music are given in Figure 6 and for speech in Figure 7. The unit associated to individual squares is the time-frequency index of the DFT. In the experimental sections, we will take 64 ms time-frames for music and 32 ms time-frames for speech; the total time span for each pattern  $\Gamma$  is 320 ms for music and 96 ms for speech. While similar, the patterns for music and for speech are at different time scales, given the different scales of stationarity in speech and music. The structures of these patterns have various properties:  $\Gamma_1$ , with a frequency localized

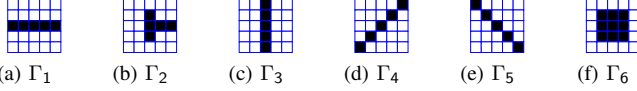


Figure 6. Extended set of time-frequency neighborhoods used for music

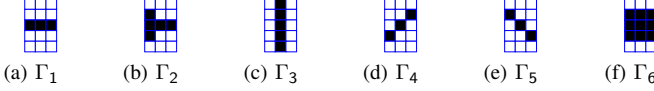


Figure 7. Extended set of time-frequency neighborhoods used for speech

and time-spread support, will emphasize tonal content; vice-versa,  $\Gamma_3$  will emphasize transients and attacks;  $\Gamma_2$  is designed [26] to avoid pre-echo artifacts; patterns  $\Gamma_4$  and  $\Gamma_5$  are introduced to stress tonal transitions; finally,  $\Gamma_6$  can serve as a default pattern when no particular structure is identified.

### B. Clipping-consistent generalized projections

We present below the generalized projection that will be crucial to enforce the clipping-consistent data-fidelity constraint along the iterations of the proposed algorithm family.

Denote  $\Omega_+$  (resp.  $\Omega_-$ ) the collection of indices of the samples in matrix  $\mathbf{Y}$  affected by positive (resp. negative) magnitude clipping. Similarly denote  $\Omega_r$  the indices of the reliable samples (not affected by clipping). For any of these sets  $\Omega$ , given a generic matrix  $\mathbf{V}$  of the same dimensions as  $\mathbf{Y}$ , define  $\mathbf{V}_\Omega$  the matrix formed by keeping unchanged the entries of  $\mathbf{V}$  indexed by  $\Omega$  and setting the rest to zero.

The set of clipping-consistent time-domain estimates  $\mathbf{W}$  of  $\mathbf{X}$  can be expressed for the analysis setting by

$$\Theta_{\text{time}}(\mathbf{Y}) := \left\{ \mathbf{W} \mid \begin{array}{l} \mathbf{W}_{\Omega_r} = \mathbf{Y}_{\Omega_r}; \\ \mathbf{W}_{\Omega_+} \succcurlyeq \mathbf{Y}_{\Omega_+}; \\ \mathbf{W}_{\Omega_-} \preccurlyeq \mathbf{Y}_{\Omega_-}. \end{array} \right\}$$

where  $\mathbf{W}$  is of the same size as  $\mathbf{Y}$ . For the synthesis setting, the set of clipping-consistent time-frequency estimates  $\mathbf{W}$  of  $\mathbf{X}$  is defined as

$$\Theta_{\text{time-freq}}(\mathbf{Y}) := \left\{ \mathbf{W} \mid \begin{array}{l} (\mathbf{D}\mathbf{W})_{\Omega_r} = \mathbf{Y}_{\Omega_r}; \\ (\mathbf{D}\mathbf{W})_{\Omega_+} \succcurlyeq \mathbf{Y}_{\Omega_+}; \\ (\mathbf{D}\mathbf{W})_{\Omega_-} \preccurlyeq \mathbf{Y}_{\Omega_-}. \end{array} \right\}.$$

Here  $\mathbf{W}$  is a time-frequency estimate gathering as many frames as in  $\mathbf{Y}$  and  $S$  frequency points, so that  $\mathbf{D}\mathbf{W}$  is a clipping-consistent time-domain estimate of  $\mathbf{X}$ . These choices hold for both plain and structured versions, and the set  $\Theta$  is convex in all cases.

**Definition 2** (Generalized projection). *Let  $\Theta$  be a nonempty convex set, and  $\mathbf{M}$  be a full column rank matrix. Given a time-frequency matrix  $\mathbf{Z}$ , we denote  $\mathcal{P}_{\Theta, \mathbf{M}}(\mathbf{Z})$  the (unique) solution of the following optimization problem:*

$$\underset{\mathbf{W} \in \Theta}{\text{minimize}} \|\mathbf{M}\mathbf{W} - \mathbf{Z}\|_F. \quad (7)$$

In the analysis setting, seeking a clipping consistent time-domain estimate  $\mathbf{W}$  of  $\mathbf{X}$  whose time-frequency representation approximates a given  $\mathbf{Z}$  corresponds to computing  $\mathcal{P}_{\text{ana}}(\mathbf{Z}) := \mathcal{P}_{\Theta, \mathbf{M}}(\mathbf{Z})$  with  $\Theta = \Theta_{\text{time}}(\mathbf{Y})$  and  $\mathbf{M} := \mathbf{A}$ . Considering an

analysis operator  $\mathbf{A}$  such that  $\mathbf{A}^H \mathbf{A} = \mathbf{I}$ , minimizing  $\|\mathbf{A}\mathbf{W} - \mathbf{Z}\|_F^2$  with  $\mathbf{W} \in \Theta$  is equivalent to

$$\underset{\mathbf{W}}{\text{minimize}} \|\mathbf{W} - \mathbf{A}^H \mathbf{Z}\|_F^2 \text{ subject to } \mathbf{W} \in \Theta.$$

As the constraint is written component-wise, the desired projection can be expressed accordingly for the  $n$ -th sample of the  $t$ -th time-frame as:

$$[\mathcal{P}_{\text{ana}}(\mathbf{Z})]_{nt} = \begin{cases} (\mathbf{M}^H \mathbf{Z})_{nt} & \text{if } \begin{cases} nt \in \Omega_+, (\mathbf{M}^H \mathbf{Z})_{nt} \geq \tau; \\ \text{or} \\ nt \in \Omega_-, (\mathbf{M}^H \mathbf{Z})_{nt} \leq -\tau; \end{cases} \\ \mathbf{Y}_{nt} & \text{otherwise.} \end{cases}$$

In this case, matrix-vector products with  $\mathbf{M}^H$  dominate the computational cost of the generalized projection. When this can be done with a fast transform, the analysis flavor has low complexity.

For the synthesis case, seeking a clipping consistent time-frequency estimate  $\mathbf{W}$  of  $\mathbf{X}$  which is close to a given time-frequency representation  $\mathbf{Z}$  corresponds to computing  $\mathcal{P}_{\text{syn}}(\mathbf{Z}) := \mathcal{P}_{\Theta, \mathbf{M}}(\mathbf{Z})$  with  $\Theta = \Theta_{\text{time-freq}}(\mathbf{Y})$  and  $\mathbf{M} := \mathbf{I}$ . Such a projection step can be approximated with a nested iterative procedure [20]. Even if this can help building an efficient projection algorithm, the overall computation cost for the synthesis flavor remains substantially higher than the analysis version (making it almost intractable). More recently, a closed-form solution for the declipping projection in the synthesis case was obtained [27] when  $\mathbf{D}$  is a Parseval tight frame (*i.e.*  $\mathbf{D}\mathbf{D}^H = \mathbf{I}$ ). As detailed in appendix this projection can then be expressed as:

$$\mathcal{P}_{\text{syn}}(\mathbf{Z}) = \mathbf{Z} - \mathbf{D}^H(\mathbf{D}\mathbf{Z} - \Pi(\mathbf{Z})), \quad (8)$$

with

$$[\Pi(\mathbf{Z})]_{nt} = \begin{cases} (\mathbf{D}\mathbf{Z})_{nt} & \text{if } \begin{cases} nt \in \Omega_+, (\mathbf{D}\mathbf{Z})_{nt} \geq \tau; \\ \text{or} \\ nt \in \Omega_-, (\mathbf{D}\mathbf{Z})_{nt} \leq -\tau; \end{cases} \\ \mathbf{Y}_{nt} & \text{otherwise.} \end{cases}$$

When fast products with  $\mathbf{D}$  and  $\mathbf{D}^H$  can be achieved, the synthesis flavor projection also has low complexity.

### C. Generic declipping algorithm

A generic algorithm for declipping exploiting sparsity, either in its synthesis or analysis flavor, with and without structure, is described in Algorithm 1. It takes as input parameters:

- a convex set  $\Theta$  and a matrix  $\mathbf{M}$  embodying the declipping data fidelity constraint and the domain (time or frequency) in which it is specified;
- a parameterized family of shrinkages  $\{\mathcal{S}_\mu(\cdot)\}_\mu$ , where the strength of the shrinkage is controlled by  $\mu$ : in the extreme cases  $\mathcal{S}_0(\mathbf{Z}) = \mathbf{Z}$  and  $\mathcal{S}_\infty(\mathbf{Z}) = \mathbf{0}$ ;
- a rule  $F : \mu \mapsto F(\mu)$  to update the shrinkage strength across iterations, and an initial strength  $\mu^{(0)}$ ;
- an initial time-frequency estimate  $\mathbf{Z}^{(0)}$ ;
- stopping parameters  $\beta$  (a threshold on the relative error) and  $i_{\text{max}}$  (a maximum number of iterations).

**Algorithm 1** Generic Algorithm:  $\mathcal{G}$ **Require:**  $\Theta, \mathbf{M}, \{\mathcal{S}_\mu(\cdot)\}_\mu, \mu^{(0)}, F(\cdot), \mathbf{Z}^{(0)}, \beta, i_{\max}$ *Initialization step:*

$$\mathbf{U}^{(0)} = \mathbf{0};$$

**for**  $i = 1$  to  $i_{\max}$  **do***Projection step on the declipping constraint:*

$$\mathbf{W}^{(i)} = \mathcal{P}_{\Theta, \mathbf{M}}(\mathbf{Z}^{(i-1)} - \mathbf{U}^{(i-1)})$$

*Projection step on the modeling constraint:*

$$\mathbf{Z}^{(i)} = \mathcal{S}_{\mu^{(i-1)}}(\mathbf{M}\mathbf{W}^{(i)} + \mathbf{U}^{(i-1)})$$

*Update step:***if**  $\frac{\|\mathbf{M}\mathbf{W}^{(i)} - \mathbf{Z}^{(i)}\|_F}{\|\mathbf{M}\mathbf{W}^{(i)}\|_F} \leq \beta$  **then**  
terminate**else**

$$\mathbf{U}^{(i)} = \mathbf{U}^{(i-1)} + \mathbf{M}\mathbf{W}^{(i)} - \mathbf{Z}^{(i)}$$

$$\mu^{(i)} = F(\mu^{(i-1)})$$

**return**  $\mathbf{W}^{(i)}$  [and optionally  $\mu^{(i)}, \mathbf{Z}^{(i)}$ ]

The notation  $\mathbf{Z}^{(i)}$  highlights that the corresponding variable is in any use-case a sparse/structured time-frequency representation. The variable  $\mathbf{U}^{(i)}$  is an intermediate time-frequency “residual” variable typical of approaches inspired by ADMM (Alternating Direction Method of Multipliers) [28]. At iteration  $i$ , an estimate of  $\mathbf{Z}$  is  $\hat{\mathbf{Z}}^{(i)} := \mathbf{Z}^{(i-1)} - \mathbf{U}^{(i-1)}$ . The interpretation of the other variables is use-case dependent:

- **analysis flavor:**  $\mathbf{M} := \mathbf{A}$  is the frequency analysis operator;  $\mathbf{W}^{(i)}$  is an estimate of the time frames  $\mathbf{X}$ , that satisfies the time-domain data-fidelity constraint  $\Theta_{\text{time}}(\mathbf{Y})$  while being closest to  $\hat{\mathbf{Z}}^{(i)}$  in the time-frequency domain; the algorithm outputs a time-domain estimate.
- **synthesis flavor:**  $\mathbf{M} := \mathbf{I}$ ;  $\mathbf{W}^{(i)}$  is a time-frequency estimate of  $\mathbf{Z}$ ; the data-fidelity constraint  $\Theta_{\text{time-freq}}(\mathbf{Y})$  is expressed in the time-frequency domain; the algorithm outputs a time-frequency estimate, from which we get a time-domain estimate by synthesis  $\hat{\mathbf{X}} := \mathbf{D}\mathbf{W}^{(i)}$  with  $\mathbf{D}$  the inverse frequency transform operator.

Due to the expression of  $\Theta$  respectively in the time domain and the time-frequency domain, the analysis and synthesis flavors can have different computational properties as will be further studied. We can summarize Algorithm 1 as a generalized procedure:

$$\mathcal{G}(\Theta, \mathbf{M}, \{\mathcal{S}_\mu\}_\mu, \mu^{(0)}, F, \mathbf{Z}^{(0)}, \beta, i_{\max}). \quad (9)$$

For reproducibility, the Matlab<sup>®</sup> code for all variants of this generic algorithm will be available on the web<sup>2</sup>.

*D. Plain (co)sparse audio declippers*

In practice, the algorithms are built to work on a frame-based manner (see further details at the end of this section). In the plain (co)sparse cases,  $\mathbf{Y} \in \mathbb{R}^{L \times 1}$  is a vector corresponding to a single windowed frame extracted from the clipped signal  $\mathbf{y}$ . We instantiate the general algorithm  $\mathcal{G}$  (Algorithm 1) by choosing the operators described in Table I. The update rule

$F$  for  $\mu$  is set to gradually decrease  $\mu$  by 1 at each iteration, starting from  $\mu^{(0)} = P - 1$  for the analysis case (resp.  $\mu^{(0)} = S - 1$  for the synthesis case). This way, we relax the sparse constraint along with the iterations.

Table I  
PARAMETERS OF ALGORITHM 1 FOR THE PLAIN SPARSE DECLIPPERS

Analysis	Synthesis
$\Theta = \Theta_{\text{time}}(\mathbf{Y})$	$\Theta = \Theta_{\text{time-freq}}(\mathbf{Y})$
$\mathbf{M} = \mathbf{A} \in \mathbb{C}^{P \times L}, P \geq L$	$\mathbf{M} = \mathbf{I} \in \mathbb{C}^{L \times L}$ ,
$\mathcal{S}_\mu(\cdot) = \mathcal{H}_{P-\mu}(\cdot)$	$\mathcal{S}_\mu(\cdot) = \mathcal{H}_{S-\mu}(\cdot)$ ,
$\mu^{(0)} = P - 1$	$\mu^{(0)} = S - 1$
$F : \mu \mapsto \mu - 1$	$F : \mu \mapsto \mu - 1$
$\mathbf{Z}^{(0)} = \mathbf{A}\mathbf{Y}, \mathbf{A} \in \mathbb{C}^{P \times L}$	$\mathbf{Z}^{(0)} = \mathbf{D}^H \mathbf{Y}, \mathbf{D} \in \mathbb{C}^{L \times S}$

Iterating Algorithm 1 with the parameters described above gives a declipped estimate  $\hat{\mathbf{W}}$  such that:

$$\hat{\mathbf{W}} := \mathcal{G}(\Theta, \mathbf{M}, \{\mathcal{S}_\mu(\cdot)\}_\mu, \mu^{(0)}, F, \mathbf{Z}^{(0)}, \beta, i_{\max}).$$

The declipped frame is  $\hat{\mathbf{X}} := \hat{\mathbf{W}} \in \mathbb{R}^{L \times 1}$  for the analysis version, while for the synthesis version  $\hat{\mathbf{X}} := \mathbf{D}\hat{\mathbf{W}} \in \mathbb{R}^{L \times 1}$ .

*E. Social (co)sparse audio declippers*

These algorithms are built to work on a frame based manner. Their input is a matrix  $\mathbf{Y} \in \mathbb{R}^{L \times 2b+1}$  made of  $2b+1$  windowed frames of the clipped signal  $\mathbf{y}$ . Their goal is to estimate the central frame  $\mathbf{x} = \mathbf{X}(:, b+1)$  of the matrix  $\mathbf{X} \in \mathbb{R}^{L \times (2b+1)}$  of frames of the original signal.

The sparsifying operator is set to  $\mathcal{S}_\mu^{\text{PEW}}(\cdot | \Gamma)$  (6) and the update rule is now set to  $F_\alpha : \mu \mapsto \alpha\mu$ . Here  $\mu$  plays a different role compared to the plain (co)sparse declippers. Indeed,  $\mu$  does not directly tune a sparsity level but an energy. The resulting parameters are summarized in Table II.

Table II  
PARAMETERS OF ALGORITHM 1 FOR THE SOCIAL SPARSE DECLIPPERS

Analysis	Synthesis
$\Theta = \Theta_{\text{time}}(\mathbf{Y})$	$\Theta = \Theta_{\text{time-freq}}(\mathbf{Y})$
$\mathbf{M} = \mathbf{A} \in \mathbb{C}^{P \times L}, P \geq L$	$\mathbf{M} = \mathbf{I} \in \mathbb{C}^{L \times L}$ ,
$\mathcal{S}_\mu(\cdot) = \mathcal{S}_\mu^{\text{PEW}}(\cdot   \Gamma)$	$\mathcal{S}_\mu(\cdot) = \mathcal{S}_\mu^{\text{PEW}}(\cdot   \Gamma)$ ,
$\mu^{(0)}$ : see section V	$\mu^{(0)}$ : see section V
$F = F_\alpha : \mu \mapsto \alpha\mu$	$F = F_\alpha : \mu \mapsto \alpha\mu$
$\mathbf{Z}^{(0)} = \mathbf{A}\mathbf{Y}, \mathbf{A} \in \mathbb{C}^{P \times L}$	$\mathbf{Z}^{(0)} = \mathbf{D}^H \mathbf{Y}, \mathbf{D} \in \mathbb{C}^{L \times S}$

Social declippers with a *predefined* time-frequency pattern  $\Gamma$  can be compactly written using Algorithm 1 as:

$$\begin{bmatrix} \hat{\mathbf{W}}(\Gamma) \\ \mu(\Gamma) \\ \mathbf{Z}(\Gamma) \end{bmatrix} := \mathcal{G}(\Theta, \mathbf{M}, \{\mathcal{S}_\mu^{\text{PEW}}(\cdot | \Gamma)\}_\mu, \mu^{(0)}, F_\alpha, \mathbf{Z}^{(0)}, \beta, i_{\max}),$$

For the analysis version the declipped time-domain matrix is  $\hat{\mathbf{X}} := \hat{\mathbf{W}} \in \mathbb{R}^{L \times 1}$ , while for the synthesis version  $\hat{\mathbf{X}} := \mathbf{D}\hat{\mathbf{W}} \in \mathbb{R}^{L \times 1}$ . The central frame of the original signal is estimated as  $\hat{\mathbf{x}} = \hat{\mathbf{X}}(:, b+1)$ .

<sup>2</sup><https://spade.inria.fr>



---

**Algorithm 2** Adaptive Social Sparse Declippers
 

---

**Require:**  $\mathbf{Y}$ ,  $\varepsilon$ ,  $\mathbf{A}$  or  $\mathbf{D}$ ,  $\{\Gamma_k\}_k$ ,  $\{\mu_k^{(0)}\}_k$ ,  $\alpha$ ,  $\beta$ ,  $i_{\max}^{\text{small}}$ ,  $i_{\max}^{\text{large}}$   
 set parameters from Table II,  $\alpha = 1$   
**for all**  $k$  **do**

$$\begin{bmatrix} \hat{\mathbf{W}}_k \\ \mu_k \\ \mathbf{Z}_k \end{bmatrix} := \mathcal{G}(\Theta, \mathbf{M}, \{\mathcal{S}_\mu^{\text{PEW}}(\cdot|\Gamma_k)\}_\mu, \mu_k^{(0)}, F_\alpha, \mathbf{Z}^{(0)}, \beta, i_{\max}^{\text{small}})$$

Compute  $e_k$  as in (10)

$$k^* := \operatorname{argmax}_k e_k, \alpha = 0.99$$

$$\hat{\mathbf{W}} := \mathcal{G}(\Theta, \mathbf{M}, \{\mathcal{S}_\mu^{\text{PEW}}(\cdot|\Gamma_{k^*})\}_\mu, \mu_{k^*}, F_\alpha, \mathbf{Z}_{k^*}, \beta, i_{\max}^{\text{large}}).$$

**return**  $\hat{\mathbf{W}}$

---

### F. Adaptive social (co)sparse declippers

In light of recent work on adaptive social denoising [29], a more adaptive social declipper uses the above described social declipper version as a building brick to select the “optimal” pattern  $\Gamma$  within a prescribed collection  $\{\Gamma_j\}_{j=1}^J$  for the processed signal region, by running few iterations of the algorithm (typically  $i_{\max}^{\text{small}} = 10$ ) for each  $\Gamma_j$ . We select the pattern  $\Gamma_{j^*}$  yielding a residual with time-frequency representation of highest entropy. The higher the entropy, the less structured the residual. Hence, this criterion tends to put most of the structured content in the estimate.

For a given  $j$ , we can define the resulting time-frequency residual:  $\mathbf{R}_j := \mathbf{M}\hat{\mathbf{W}}_j - \mathbf{Z}^{(0)}$ . Computing a Q-bin histogram of the modulus of its entries yields  $\hat{p}^{(j)}$ , an empirical probability distribution, which (empirical) entropy is

$$e_j = - \sum_{q=1}^Q \hat{p}_q^{(j)} \log_2(\hat{p}_q^{(j)}). \quad (10)$$

A heuristic to choose Q is the Herbert-Sturges rule [30].

The choice of the first value  $\mu_j^{(0)}$  and of the update rule  $F_\alpha$  as well as the choice of the collection of allowed time-frequency patterns  $\{\Gamma_j\}_{j=1}^J$ , are essential for the algorithm performance. These will be specified in section V.

Once the best time-frequency pattern  $\Gamma_{j^*}$  is selected, we run Algorithm 1 with the parameters listed in Table II and “warm-started” with  $\mu^{(0)}$ ,  $\mathbf{Z}^{(0)}$  and a sufficiently large  $i_{\max}$  (typically  $i_{\max}^{\text{large}} = 10^6$ ) to get

$$\hat{\mathbf{W}} := \mathcal{G}(\Theta, \mathbf{M}, \{\mathcal{S}_\mu^{\text{PEW}}(\cdot|\Gamma_{j^*})\}_\mu, \mu_{j^*}, F_\alpha, \mathbf{Z}_{j^*}, \beta, i_{\max}^{\text{large}}).$$

By “warm-starting”, we mean that the initialization parameters are taken as  $\mu^{(0)} = \mu_{j^*}$  and  $\mathbf{Z}^{(0)} = \mathbf{Z}_{j^*}$  where the  $\star$  denotes the values at the end of the  $\Gamma_{j^*}$  selection procedure.

The pseudo-code of the adaptive social declippers for a given block of adjacent frames  $\mathbf{Y} \in \mathbb{R}^{L \times (2b+1)}$  is given in Algorithm 2. Again, for the analysis version  $\hat{\mathbf{X}} := \hat{\mathbf{W}}$ , while for the synthesis version  $\hat{\mathbf{X}} := \mathbf{D}\hat{\mathbf{W}}$ , and the central frame of the original signal is estimated as  $\hat{\mathbf{x}} = \hat{\mathbf{X}}(:, b+1)$ .

### G. Overlap-add processing

As the algorithms work on a frame-based manner, the declipped signal is obtained by overlap-add synthesis with

a synthesis window satisfying the constant overlap-add constraint with respect to the analysis window.

## V. EXPERIMENTAL VALIDATION

To assess the performance of the various flavors (analysis vs synthesis, plain vs structured, adaptive or not) of the framework described in the previous section, and to compare it with state of the art approaches at various degradation levels, we conduct several sets of experiments. After describing the data sets and performance measures, we describe and analyze a first small scale experiment on the SMALL data set. The lessons from this experiment lead to the design of a larger-scale experiment which is analyzed in further details.

### A. Datasets

Table III  
TEST DATA SUMMARY

	SMALL	RWC					TIMIT
		Pop	Jazz	Chamber	Orchestra	Vocals	
Duration [s]	100	3000	3000	3150	2700	1320	600
Excerpts Nb.	20	100	50	35	9	6	135
Channel Nb.	1	1	1	1	1	1	1
Fs [kHz]	16	16	16	16	16	16	16

State-of-the-art comparisons are first conducted on the 20 audio examples from the SMALL dataset described in the introduction, for its wide use in the literature, and as a preliminary tuning for subsequent experiments.

Then, the proposed large scale objective experiments are conducted on excerpts from the RWC Music Database [31]. We use the “Pop” and “Jazz” genres as is, and subcategorize the “Classic” genre (Vocals, Chamber, Symphonies), leading to 5 subsets. All the tracks are sufficiently diverse to reflect the robustness of the approach on different audio content. We also perform experiments on excerpts of the TIMIT database [32] for evaluation on speech content.

All the audio examples used for objective experiments are either natively sampled at 16 kHz or down-sampled to 16 kHz, and down-mixed (by simple averaging of the two channels) to provide single-channel data. Each excerpt was normalized in amplitude ( $\|\operatorname{vec}(\mathbf{X})\|_\infty = 1$ ) then artificially clipped under the hard-clipping model in (1) to meet a given input SDR. Table III summarizes the data used for these experiments.

Additionally, we perform subjective listening tests based on the MULTIPLE Stimuli with Hidden Reference and Anchor (MUSHRA) evaluation procedure [33]. We use the web-MUSHRA framework [34] and use saturated versions of some original stereo excerpts of the 5 RWC subsets, used also for objective comparison. Further details are given in subsection V-E.

### B. Performance measure

On top of  $\Delta\text{SDR}$  as a first objective measure, we compare the perceptual estimated speech quality with the objective MOS-PESQ scores [14], and analyse the predicted intelligibility through the Short-Time Objective Intelligibility index (STOI) [35]. For music, we compare the perceptual quality

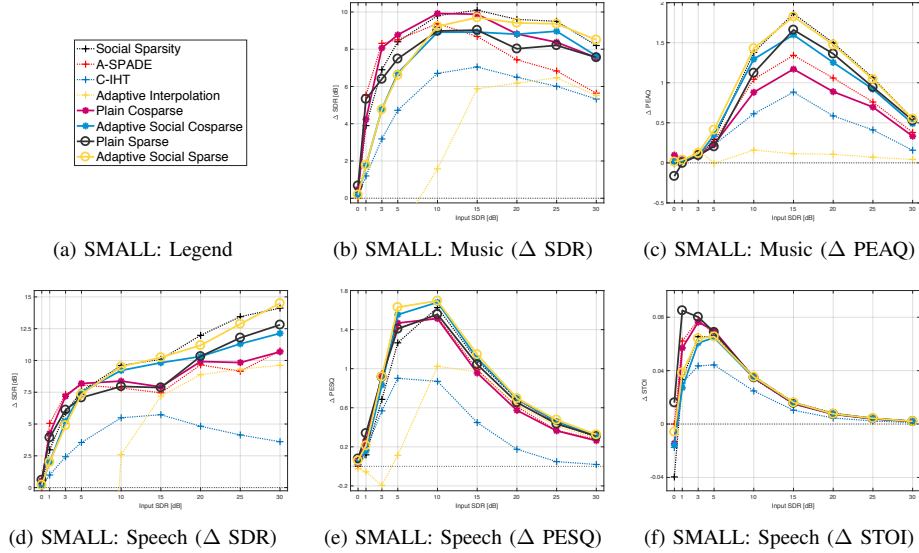


Figure 8. State-of-the-art comparison (Numerical results, objective quality & intelligibility) on SMALL dataset.

on the entire RWC excerpts collection with the Objective Difference Grade (ODG) PEAQ scores [13]. Finally, for all methods we compare computation times displaying the ratio to real time processing (xRT).

### C. Small scale objective experiments

In the following we compare the various instances of the proposed generic algorithmic framework with two baseline declipping methods: *Adaptive interpolation* ([15]) and *Consistent Iterative Hard-Thresholding* (C-IHT, [11]), as well as with state-of-the-art methods: the Social Sparsity Declipper [5] and the *Analysis SParse Audio DEclipper* (A-SPADE, [17]). The *plain cosparse* algorithm mainly differs from A-SPADE in terms of the relative norm criterion used to stop the procedure. This new choice provides substantial improvements for light to moderate clipping conditions (see Figure 8b).

Common algorithm parameters are set as listed below.

- Frame size  $L = 64$  ms for music,  $L = 32$  ms for speech;
- Hamming windows, overlap: 75%, for methods allowing frame-based processing;
- Maximum number of iterations  $i_{\max} = 10^6$ ;
- Analysis operator,  $\mathbf{A} =$  twice redundant DFT;
- Synthesis operator,  $\mathbf{D} =$  twice redundant inverse DFT ( $\mathbf{D} = \mathbf{A}^H$ .)

The number of overlapping segments is set to  $b = 5$  for music (*i.e.*  $\mathbf{Y} \in \mathbb{R}^{L \times 11}$ ),  $b = 1$  for speech (*i.e.*  $\mathbf{Y} \in \mathbb{R}^{L \times 3}$ ).

For each algorithm, we choose the stopping criterion  $\beta \in \{10^{-1}, 10^{-2}, 10^{-3}, 10^{-4}\}$  that provides the best averaged SDR improvement. The value  $\beta = 10^{-3}$  appeared as a good compromise and will be re-used for all algorithms in the large-scale experiments described in the next section.

The pattern  $\Gamma$  for non-adaptive social (co)sparse methods is fixed as recommended in [5] to obtain the best results. Considering the adaptive social (co)sparse declippers, we set the collection of time-frequency patterns  $\{\Gamma_k\}_{k=1}^K$  to match the one presented on Figure 6 for music and Figure 7 for speech.

For each pattern, the initial shrinkage strength in Algorithm 2 is set as  $\mu_k^{(0)} := \|\Gamma_k\|_0 \times (1 - \|\text{vec}(\mathbf{Y})\|_\infty)$ . With this choice, the more severely clipped is the signal  $\mathbf{Y}$ , the lower its magnitude  $\|\text{vec}(\mathbf{Y})\|_\infty$ , hence the stronger the shrinkage. Moreover, given the expression (6) of PEW shrinkage, setting  $\mu$  proportional to the sparsity degree  $\|\Gamma\|_0$  of the considered time-frequency neighborhood makes it act as a threshold on the *average time-frequency power* in this neighborhood, rather than a threshold on the total energy in  $\Gamma$ .

Once the proper  $\Gamma_{k^*}$  is selected, we obtained the best declipping results with  $\mu$  following a geometric progression of common ratio  $\alpha$  with  $\alpha = 0.99$ .

Figure 8 displays average SDR improvements, predicted quality improvements ( $\Delta\text{PEAQ}$ ,  $\Delta\text{PESQ}$ ) and intelligibility improvements ( $\Delta\text{STOI}$ ) for all the aforementioned methods on the SMALL examples. We note that for severe clipping levels (low input SDR), plain (co)sparse models provide better SDR improvements than social sparse models. On the opposite, we notice superiority of methods that include social sparse models for lighter degradation (input SDR  $\geq 15$  dB).

Table IV presents computational efficiency corresponding to the results obtained on Figure 8. All the experiments were performed using a Matlab<sup>®</sup> implementation of the algorithms on a workstation equipped with a 2.4 GHz Intel<sup>®</sup> Xeon<sup>®</sup> processor and 32 GB of RAM memory. We note that the method provided in [5] uses the Structured Sparsity Toolbox<sup>3</sup> relying on the Large Time-Frequency Analysis Toolbox<sup>4</sup> [36]. We note that for almost all methods, at input SDR of 5dB or more, the processing time seems to be monotonically decreasing with the input SDR. The exception is for [5] whose computational efficiency seems to be independent from the input SDR. The plausible explanation is that contrarily to the other methods, it only relies on an upper bound on the iteration count to stop the algorithm. Hence, the corresponding higher computational

<sup>3</sup><https://homepage.univie.ac.at/monika.doerfler/StrucAudio.html>

<sup>4</sup><http://lftat.github.io>

Table IV  
COMPUTATIONAL PERFORMANCE OF DECLIPPING METHODS (RATIO TO REAL-TIME PROCESSING  $\times$ RT)

Input SDR [dB]	Adaptive Interpolation [15]	Social Sparsity [5] LTFAT	Social Sparsity [5] Compiled LTFAT	C-IHT [11]	A-SPADE [17]	Plain cosparse	Plain sparse	Adaptive social cosparse	Adaptive social sparse
0	134.6	754.2	62.1	19.4	0.07	10.1	5.2	296.7	303.7
1	82.2	753.3	62.2	19.0	17.7	11.0	6.9	205.7	236.7
3	47.0	754.8	62.2	17.2	24.9	12.8	8.7	165.4	191.1
5	30.5	754.5	62.1	14.9	27.3	13.5	9.5	143.8	302.9
10	12.9	755.4	62.1	9.8	24.4	13.3	10.1	121.0	169.6
15	6.5	754.6	62.1	5.7	16.5	11.4	9.3	180.5	163.5
20	3.8	756.1	62.2	3.4	10.4	9.1	7.6	91.7	70.2
25	2.2	754.6	62.1	2.2	6.6	6.2	2.2	47.4	56.0
30	1.3	756.4	62.2	1.3	4.2	4.1	3.4	22.4	25.3

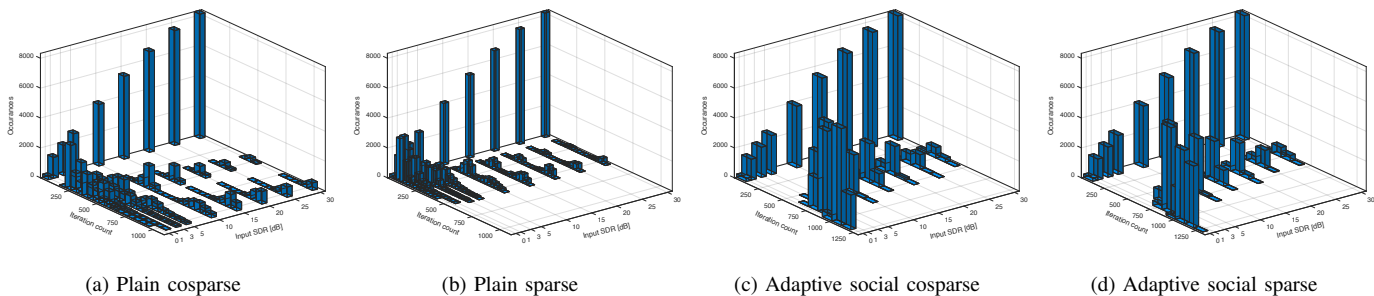


Figure 9. Total iteration count distribution on SMALL dataset.

time could certainly be drastically reduced by lowering the maximum iteration count.

**Remark.** *Tuning the parametrization of the plain (co)sparse methods (in particular increasing  $\beta$ , reducing the number of iterations or increasing the rate of decay of the shrinkage strength) makes it possible to achieve real-time processing on a regular laptop computer, possibly at the cost of tradeoffs with the resulting declipping performance. We also note that for [5] some code optimization (i.e. C backend for the LTFAT toolbox) can drastically improve the computational performance (see the 4<sup>th</sup> column of Table IV). For the four methods presented here, the maximum number of iteration  $i_{\max} = 10^6$  is never reached anyway as shown on Figure 9 for a given  $\beta = 10^{-3}$ .*

#### D. Large scale objective experiments

In order to accurately study the influence of the (social) (co)sparse models, we extend here the study to a wide-range comparison on RWC database excerpts. To the best of our knowledge, it is the first time such a large scale validation is performed. Results presented on Figure 10 and Figure 11 show averaged measurements over all available sounds. In order to assess the effect of different signal models only, we choose a single stopping criterion  $\beta$ . In light of the experiments on the SMALL dataset, we retained  $\beta = 10^{-3}$  as a good compromise for the performance of all considered algorithms. Figure 10 shows the behavior of the four methods as a function of the input degradation level. For all the considered datasets, all declipping methods provide significant SDR improvements (often more than 8dB) at (almost) all considered input SDRs. This remains the case even for relatively high input SDRs, with one exception: the Pop category, for which the Plain

Cosparse brings some degradation at very high input SDR, and the overall improvement never exceeds 8dB. This may be due to the fact that most of the 100 unclipped excerpts in this category are mixes containing one or more tracks of dynamically compressed drums, and that at least 21 of them contain saturated guitar sounds. These sounds naturally seem more difficult to desaturate, for two reasons: first, the saturation process they went through might depart too much from the hard clipping model; second, this saturation generally occur *before* mixing, leading to an “intrinsic clipping threshold” that might be lower than the actual threshold  $\tau$  detected and used in the declipping process.

The benefit of social (co)sparse modeling in terms of these objective measures is clear for high to moderate input SDR ( $> 10$ dB, mild clipping), and vice-versa, there is also a distinct superiority of the plain cosparse method for low input SDRs (strong clipping). These tendency will also be observed in listening tests at a 3 dB input SDR. Actually, the plain approaches perform 2 to 4 dB better than the adaptive social methods for input SDRs ranging from 1 to 5 dB on audio content from the RWC database. On the opposite, the trend tends to reverse above 10 dB input SDR as the social methods features improvements between 1 and 4 dB (even 7 dB for the Pop category) above the plain (co)sparse techniques. For speech content, the difference is less obvious yet Figure 10f, Figure 11a and Figure 11b displays better improvements either in terms of SDR, objective intelligibility or quality for the plain sparse declipper.

Standard deviation results (showed on shaded colors) indicate that the social cosparse declipper produces less variable results across examples: we tested 54 configurations

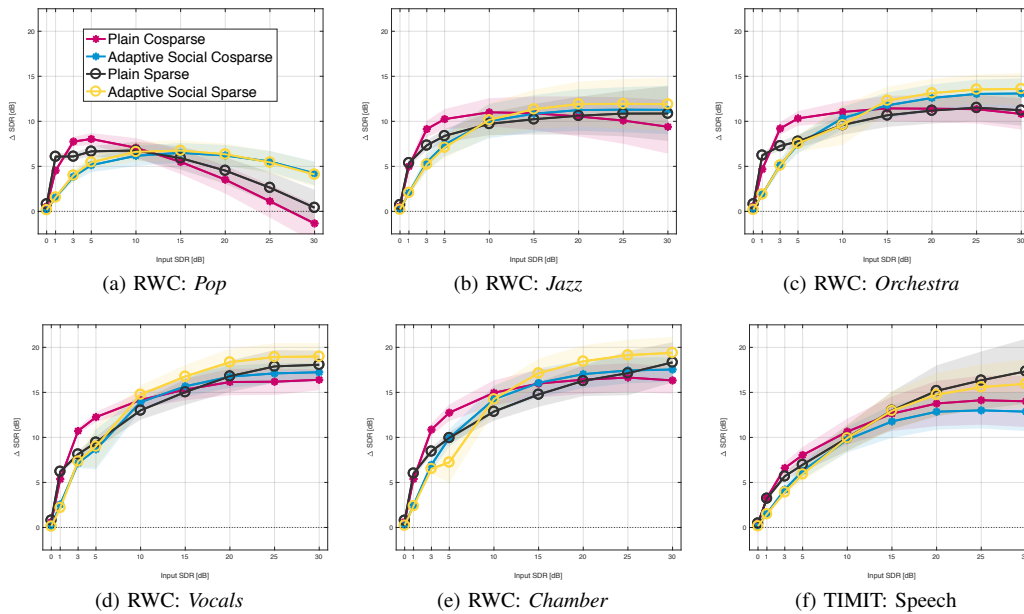
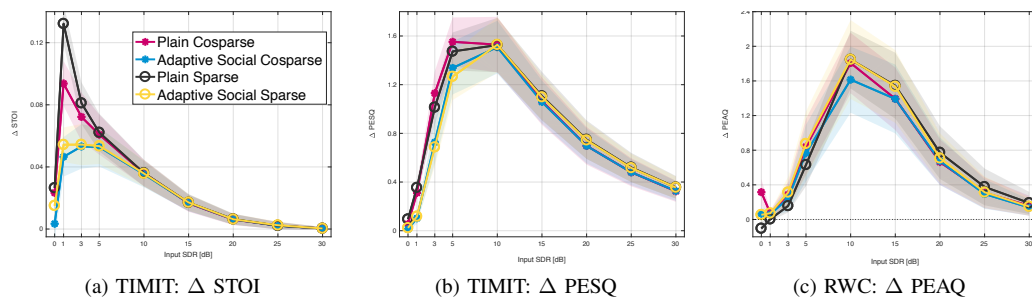
Figure 10. Performance on large-scale dataset:  $\Delta$  SDR [dB]

Figure 11. Performance on large-scale dataset: Objective Quality and Intelligibility Results

of sound categories and input SDRs, and this declipper produced the smallest standard deviation in 67% of these configurations. We also observed that, for any of the considered algorithms, the variability of the improvement seems to be higher for higher SDR.

The difference in performance between the plain and social cosparse declippers on music at low input SDR might come from the nature of the degradation. Indeed, contrarily to additive noise, the magnitude saturation adds broadband stripes in the time-frequency plane due to discontinuities of the derivative in the time domain. This way, the signal’s underlying structure (embodied by a time-frequency pattern  $\Gamma$ ) is not only hidden as it would be in the case of additive noise, but also possibly distorted: during the initialization loop of the adaptive social approaches, it is possible that a “wrong” pattern  $\Gamma^*$  is selected. In contrast, the plain cosparse declipper cannot be affected by this type of behaviour. Another interesting result which could support this hypothesis is that for higher SDR, the social methods are actually benefiting from the time-frequency structure identification as the adaptive approach performs better.

### E. Subjective experiments

This listening test is designed to provide insights on global audio quality of several declipping methods. To avoid possible difficulties in rating speech quality with non native speakers participants and as speech intelligibility listening tests are out of the scope of this study, we focus on music excerpts. We evaluate a subset of the conditions presented for the numerical experiments. For the test not to last longer than 30 minutes, we choose a single input SDR of 3dB. For the sound material, for each genre of the RWC database described in subsection V-A, 2 excerpts of 5 seconds each were randomly picked. All participants were presented the same excerpts. We use here the original stereo excerpts sampled at 44.1 kHz to preserve original quality. Each channel is first artificially saturated to reach an input SDR of 3dB on each channel, then processed independently with the algorithm in [15] and the 6 best performing sparsity-based methods of Figure 8b. The compared methods are here A-SPADE [17], Social sparsity declipper [5], and the 4 flavors of the framework presented earlier: plain cosparse, plain sparse, adaptive social cosparse, adaptive social sparse. As a lower anchor, we use the algorithm of [15] based on auto-regressive modeling and interpolation.

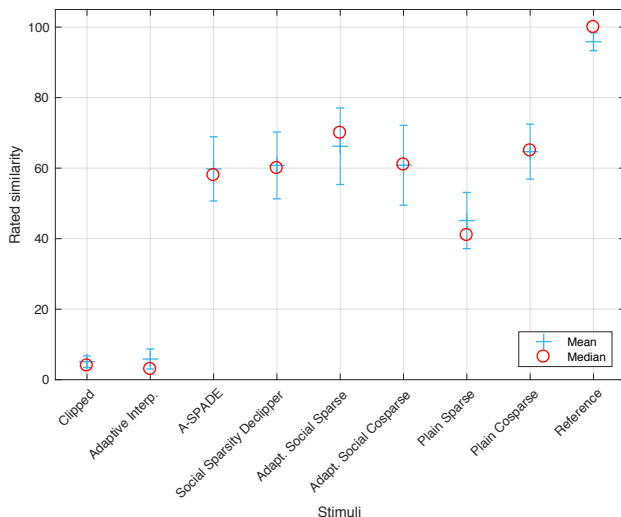


Figure 12. Subjective quality audio rating

As Figure 9 suggests that the four algorithms presented here stop far below  $10^6$  iterations, we set here  $i_{\max} = 1300$ , the other parameters match those used described earlier. 23 participants are asked to rate the similarity between the clean reference and the processed signals on a scale from 0 to 100. Figure 12 displays results for this listening experiment. Despite the variability between participants, an analysis of variance (ANOVA) and a t-paired test [37] reveal that the average results for [15] and the *plain sparse* algorithm are significantly different from the 5 other methods ( $p\text{-values} \leq 9 \cdot 10^{-8}$ ). Even if these results do not show statistically significant different means between [17], [5], adaptive social (co)sparse and plain cosparsity algorithms, individual results shows the same ranking trend from one participant to another.

## VI. CONCLUSION

Recent progress in audio declipping has made it possible to address severe degradation levels with unprecedented performance. The versatile algorithmic framework proposed here, which handles transparently both the analysis and synthesis flavors of sparse time-frequency models as well as the popular “social” time-frequency constraint, allowed us to conduct a systematic evaluation of many popular algorithms, including a variant (adaptive social cosparsity) that was never proposed before. The systematic coverage of algorithmic options and of a large ballpark of declipping levels, evaluated on a wide range of data and performance measures, lead us to draw conclusions and guidelines for the practice of declipping as well as its performance evaluation.

The first message to be drawn is the importance of experimental methodology to truly assess declipping performance, which should consider: i) measuring the initial degradation and its improvement in terms of Signal-to-Distortion Ratio; ii) choosing a perceptually relevant range of degradation levels, more ambitious than the one used in early work on the topic, down to only a few decibels; iii) as in many other fields (if not all), gathering large test sets, covering a wide scope of musical genres and speech; iv) conducting listening tests.

In terms of algorithmic choices, we can summarize our observations as follows. The first expected result is the supremacy of sparsity-based methods (no matter the flavour) over the “historic” interpolation method, in all saturation regimes but the inaudible ones. For light saturation regimes (Input SDR above 5 dB), recent sparse methods consistently bring improvements of 8dB and more for various types of speech and music. Significant improvements, typically of a few decibels and up to 10 dB, are also obtained by these methods in severe clipping cases (input SDR from 0 to 5 dB.) The only notable exception is pop music, possibly due to the presence of dynamically compressed drums and saturated guitar sounds. Similar trends are observed with perceptually-aware objective quality measures.

The plain and social flavors have comparable quantitative restoration performance, although the social constraint brings more benefit at mild saturation regimes; plain versions could be preferable in more challenging conditions. This could be due to the difficulty to detect social sparsity patterns heavily corrupted by strong saturation, and calls for further studies to guide the choice of such patterns, possibly based on learning techniques. However, from a perceptual point of view, adaptive social algorithms were slightly preferred by listeners, even at 3dB.

Improvements brought by the social constraint, however, comes with an increased computational cost. While cosparsity has been previously thought to be faster in the declipping task [17], better implementations and a fair tuning of stopping criteria suggest here that synthesis models are still on the go. Finally, at the moment, only plain versions show an immediate potential for real-time applications.

The algorithmic framework for audio restoration proposed in this paper is versatile from many points of view. In particular, it can handle several types of audio distortion models: demonstrated here on declipping, it can act as well on denoising and dereverberation problems [38]. Further work could include extensions of the framework to these degradations, and multichannel scenarios.

## APPENDIX

### GENERALIZED PROJECTION FOR DECLIPPING

For the synthesis case, solving (7) with  $\Theta = \Theta_{\text{time-freq}}(\mathbf{Y})$  and  $\mathbf{M} = \mathbf{I}$  can be recast as:

$$\hat{\mathbf{W}} = \underset{\mathbf{W}}{\operatorname{argmin}} \|\mathbf{W} - \mathbf{Z}\|_F^2 \text{ subject to } \mathbf{D}\mathbf{W} \in \tilde{\Theta} \quad (11)$$

and

$$\tilde{\Theta} := \left\{ \mathbf{V} \mid \begin{array}{l} \mathbf{V}_{\Omega_r} = \mathbf{Y}_{\Omega_r}; \\ \mathbf{V}_{\Omega_+} \succcurlyeq \mathbf{Y}_{\Omega_+}; \\ \mathbf{V}_{\Omega_-} \preccurlyeq \mathbf{Y}_{\Omega_-}. \end{array} \right\}.$$

As shown in [27], [39], when  $\mathbf{D}\mathbf{D}^H = \mathbf{I}$  and  $\tilde{\Theta}$  embodies a multidimensional interval constraint, the closed-form solution for (11) writes:

$$\hat{\mathbf{W}} = \mathbf{Z} - \mathbf{D}^H(\mathbf{D}\mathbf{Z} - \Pi(\mathbf{Z})), \quad (12)$$



with

$$[\Pi(\mathbf{Z})]_{nt} = \begin{cases} (\mathbf{DZ})_{nt} & \text{if } \begin{cases} nt \in \Omega_+, (\mathbf{DZ})_{nt} \geq \tau; \\ \text{or} \\ nt \in \Omega_-, (\mathbf{DZ})_{nt} \leq -\tau; \end{cases} \\ \mathbf{Y}_{nt} & \text{otherwise.} \end{cases}$$

#### ACKNOWLEDGMENT

The authors thank Matthieu Kowalski for providing his implementation of the algorithm described in [5].

#### REFERENCES

- [1] C.-T. Tan, B. C. Moore, and N. Zacharov, "The effect of nonlinear distortion on the perceived quality of music and speech signals," *Journal of the Audio Engineering Society*, vol. 51, no. 11, pp. 1012–1031, 2003.
- [2] Y. Tachioka, T. Narita, and J. Ishii, "Speech recognition performance estimation for clipped speech based on objective measures," *Acoustical Science and Technology*, vol. 35, no. 6, pp. 324–326, 2014.
- [3] M. J. Harvilla and R. M. Stern, "Least squares signal declipping for robust speech recognition," in *Fifteenth Annual Conference of the International Speech Communication Association*, 2014.
- [4] A. Adler, V. Emiya, M. G. Jafari, M. Elad, R. Gribonval, and M. D. Plumbley, "Audio inpainting," *IEEE Transactions on Audio, Speech, and Language Processing*, vol. 20, no. 3, pp. 922–932, 2012.
- [5] K. Siedenburg, M. Kowalski, and M. Dörfler, "Audio declipping with social sparsity," *ICASSP, IEEE International Conference on Acoustics, Speech and Signal Processing*, no. 2, pp. 1577–1581, 2014.
- [6] A. Ozerov, Ç. Bilen, and P. Pérez, "Multichannel audio declipping," in *IEEE International Conference on Acoustics, Speech, and Signal Processing (ICASSP'16)*, Shanghai, China, Mar. 2016. [Online]. Available: <https://hal.inria.fr/hal-01254950>
- [7] I. Damjanovic, M. E. Davies, and M. D. Plumbley, "Smallbox - an evaluation framework for sparse representations and dictionary learning algorithms," in *International Conference on Latent Variable Analysis and Signal Separation*. Springer, 2010, pp. 418–425.
- [8] L. Rencker, F. Bach, W. Wang, and M. D. Plumbley, "Consistent dictionary learning for signal declipping," in *Latent Variable Analysis and Signal Separation - 14th International Conference, LVA/ICA 2018, Guildford, UK, July 2-5, 2018, Proceedings*, ser. Lecture Notes in Computer Science, Y. Deville, S. Gannot, R. Mason, M. D. Plumbley, and D. Ward, Eds., vol. 10891. Springer, 2018, pp. 446–455. [Online]. Available: [https://doi.org/10.1007/978-3-319-93764-9\\_41](https://doi.org/10.1007/978-3-319-93764-9_41)
- [9] P. Závíška, P. Rajmic, O. Mokry, and Z. Průša, "A proper version of synthesis-based sparse audio declipper," in *ICASSP 2019-2019 IEEE International Conference on Acoustics, Speech and Signal Processing (ICASSP)*. IEEE, 2019, pp. 591–595.
- [10] E. Vincent, S. Araki, F. J. Theis, G. Nolte, P. Bofill, H. Sawada, A. Ozerov, B. V. Gowreesunker, D. Lutter, and N. Q. K. Duong, "The Signal Separation Evaluation Campaign (2007-2010): Achievements and Remaining Challenges," Research Report RR-7581, Mar. 2011. [Online]. Available: <https://hal.inria.fr/inria-00579398>
- [11] S. Kitić, L. Jacques, N. Madhu, M. P. Hopwood, A. Spriet, and C. De Vleeschouwer, "Consistent Iterative Hard Thresholding for signal declipping," in *IEEE International Conference on Acoustics, Speech and Signal Processing (ICASSP)*, 2013. IEEE, 2013, pp. 5939–5943.
- [12] B. Defraene, N. Mansour, S. De Hertogh, T. van Waterschoot, M. Diehl, and M. Moonen, "Declipping of audio signals using perceptual compressed sensing," *IEEE Transactions on Audio, Speech, and Language Processing*, vol. 21, no. 12, pp. 2627–2637, 2013.
- [13] P. Kabal, "An examination and interpretation of itu-r bs. 1387: Perceptual evaluation of audio quality," *TSP Lab Technical Report, Dept. Electrical & Computer Engineering, McGill University*, pp. 1–89, 2002.
- [14] A. W. Rix, J. G. Beerends, M. P. Hollier, and A. P. Hekstra, "Perceptual evaluation of speech quality (pesq)-a new method for speech quality assessment of telephone networks and codecs," in *Proceedings (ICASSP'01). IEEE International Conference on Acoustics, Speech, and Signal Processing*, vol. 2. IEEE, 2001, pp. 749–752.
- [15] A. J. E. M. Janssen, R. N. J. Veldhuis, and L. Vries, "Adaptive interpolation of discrete-time signals that can be modeled as autoregressive processes," *IEEE Transactions on Acoustics, Speech and Signal Processing*, vol. 34, no. 2, pp. 317–330, 1986.
- [16] F. R. Ávila, M. P. Tcheou, and L. W. Biscainho, "Audio soft declipping based on constrained weighted least squares," *IEEE Signal Processing Letters*, vol. 24, no. 9, pp. 1348–1352, 2017.
- [17] S. Kitić, N. Bertin, and R. Gribonval, "Sparsity and cosparsity for audio declipping: a flexible non-convex approach," in *Latent Variable Analysis and Signal Separation (LVA/ICA)*. Liberec, Czech Republic: Springer, 2015, pp. 243–250.
- [18] M. Kowalski, K. Siedenburg, and M. Dörfler, "Social sparsity! neighborhood systems enrich structured shrinkage operators," *IEEE Transactions on Signal Processing*, vol. 61, no. 10, pp. 2498–2511, 2013.
- [19] S. Nam, M. E. Davies, M. Elad, and R. Gribonval, "Cosparsity analysis modeling-uniqueness and algorithms," in *IEEE International Conference on Acoustics, Speech and Signal Processing (ICASSP)*. IEEE, 2011, pp. 5804–5807.
- [20] S. Kitić, "Cosparsity regularization of physics-driven inverse problems," PhD Thesis, IRISA, Inria Rennes, 2015. [Online]. Available: <https://hal.archives-ouvertes.fr/tel-01237323>
- [21] M. Kowalski and B. Torrèsani, "Structured sparsity: from mixed norms to structured shrinkage," in *SPARS'09-Signal Processing with Adaptive Sparse Structured Representations*, 2009.
- [22] R. Jenatton, J.-Y. Audibert, and F. Bach, "Structured variable selection with sparsity-inducing norms," *The Journal of Machine Learning Research*, vol. 12, pp. 2777–2824, 2011.
- [23] M. Kowalski and B. Torrèsani, "Sparsity and persistence: mixed norms provide simple signal models with dependent coefficients," *Signal, image and video processing*, vol. 3, no. 3, pp. 251–264, 2009.
- [24] M. Kowalski, "Thresholding rules and iterative shrinkage/thresholding algorithm: A convergence study," in *IEEE International Conference on Image Processing (ICIP)*. IEEE, 2014, pp. 4151–4155.
- [25] T. Blumensath and M. E. Davies, "Iterative hard thresholding for compressed sensing," *Applied and Computational Harmonic Analysis*, vol. 27, no. 3, pp. 265–274, 2009.
- [26] K. Siedenburg and M. Dörfler, "Audio denoising by generalized time-frequency thresholding," in *45th Audio Engineering Society Conference: Applications of Time-Frequency Processing in Audio*. Audio Engineering Society, 2012.
- [27] P. Závíška, P. Rajmic, Z. Průša, and V. Veselý, "Revisiting synthesis model in sparse audio declipper," in *International Conference on Latent Variable Analysis and Signal Separation*. Springer, 2018, pp. 429–445.
- [28] S. Boyd, N. Parikh, E. Chu, B. Peleato, and J. Eckstein, "Distributed optimization and statistical learning via the alternating direction method of multipliers," *Foundations and Trends® in Machine Learning*, vol. 3, no. 1, pp. 1–122, 2011.
- [29] C. Gaultier, S. Kitić, N. Bertin, and R. Gribonval, "AUDASCITY: Audio Denoising by Adaptive Social Cosparsity," in *2017 25th European Signal Processing Conference (EUSIPCO)*, Aug 2017, pp. 1265–1269.
- [30] H. A. Sturges, "The choice of a class interval," *Journal of the American Statistical Association*, vol. 21, no. 153, pp. 65–66, 1926.
- [31] M. Goto, H. Hashiguchi, T. Nishimura, and R. Oka, "RWC music database: Popular, classical and jazz music databases." in *ISMIR*, vol. 2, 2002, pp. 287–288.
- [32] J. S. Garofolo, L. F. Lamel, W. M. Fisher, J. G. Fiscus, and D. S. Pallett, "Darpa timit acoustic-phonetic continuous speech corpus cd-rom. nist speech disc 1-1.1," *NASA STI/Recon technical report n*, vol. 93, 1993.
- [33] "ITU-R BS.1534-1: Method for the subjective assessment of intermediate quality levels of coding systems."
- [34] M. Schoeffler, S. Bartoschek, F.-R. Stöter, M. Roess, S. Westphal, B. Edler, and J. Herre, "webmushra—a comprehensive framework for web-based listening tests," *Journal of Open Research Software*, vol. 6, no. 1, 2018.
- [35] C. H. Taal, R. C. Hendriks, R. Heusdens, and J. Jensen, "An algorithm for intelligibility prediction of time–frequency weighted noisy speech," *IEEE Transactions on Audio, Speech, and Language Processing*, vol. 19, no. 7, pp. 2125–2136, 2011.
- [36] P. L. Søndergaard, B. Torrèsani, and P. Balazs, "The Linear Time Frequency Analysis Toolbox," *International Journal of Wavelets, Multiresolution Analysis and Information Processing*, vol. 10, no. 4, 2012.
- [37] J. Cohen, *Statistical power analysis for the behavioral sciences*. Academic press, 2013.
- [38] C. Gaultier, "Design and evaluation of sparse models and algorithms for audio inverse problems," Ph.D. dissertation, 2019.
- [39] M. Šorel and M. Bartoš, "Efficient jpeg decompression by the alternating direction method of multipliers," in *2016 23rd International Conference on Pattern Recognition (ICPR)*. IEEE, 2016, pp. 271–276.