



**HAL**  
open science

# Situation Awareness & Decision-making for Autonomous Driving

Christian Laugier

► **To cite this version:**

Christian Laugier. Situation Awareness & Decision-making for Autonomous Driving. IROS 2019 - IEEE/RSJ International Conference on Intelligent Robots and Systems, Nov 2019, Macau, China. pp.1-25. hal-02429023

**HAL Id: hal-02429023**

**<https://inria.hal.science/hal-02429023>**

Submitted on 6 Jan 2020

**HAL** is a multi-disciplinary open access archive for the deposit and dissemination of scientific research documents, whether they are published or not. The documents may come from teaching and research institutions in France or abroad, or from public or private research centers.

L'archive ouverte pluridisciplinaire **HAL**, est destinée au dépôt et à la diffusion de documents scientifiques de niveau recherche, publiés ou non, émanant des établissements d'enseignement et de recherche français ou étrangers, des laboratoires publics ou privés.

# Situation Awareness & Decision-making for Autonomous Driving

**Christian LAUGIER, PhD & Dr Es Science**

*Research Director at Inria & Scientific Advisor for Probayes and for Baidu China*

*Inria Chroma team & IRT Nanoelec*

*christian.laugier@inria.fr*

*Contributions from*

*L. Rummelhard, A. Negre, N. Turro, J.A. David, J. Lussereau, T. Genevois, C. Tay Meng Keat, S. Lefevre, O. ErKent, D. Sierra-Gonzalez*



**Keynote talk, IROS 2019 Cutting Edge Forum on “Robotics, AI and ITS contributions to Autonomous Driving”**  
**IROS 2019, Macau, China, November 5<sup>th</sup> 2019**

# Technology status & Ongoing challenges for AVs

- Strong involvement of Car Industry & GAFA + Large media coverage + Increasing Governments supports
  - An expected market of 515 B€ at horizon 2035 (~17% world automobile market, Consulting agency AT Kearney, Dec 2017)
  - But Legal & Regulation issues are still unclear ... idem for Technologies Validation & Certification issues !
- => Numerous experiments in real traffic conditions since 2010 (Disengagement reports & Insights on system maturity)
- => But still insufficient ... Realistic Simulation & Formal methods are also under development (e.g. EU Enable-S3)



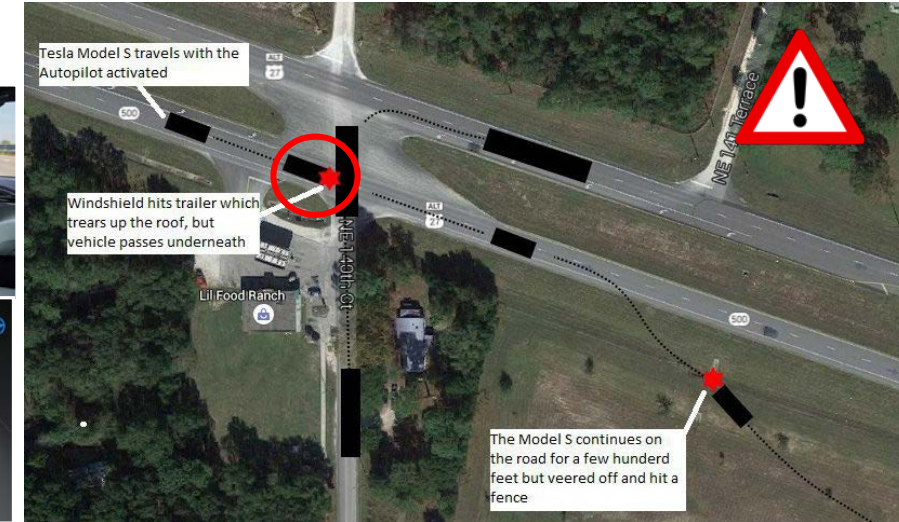
Millions of miles driven since 2010 (Google, Tesla, Waymo, Uber) Several benign & serious accidents in past few years Safety is still not guaranteed!



# Fatal accidents involving AVs – *Perception failure*

- ❑ **Tesla driver killed in a crash with Autopilot “level 2” active**  
(*ADAS mode*) – *May 2016*

- ✓ *The Autopilot failed to detect a white moving truck, with a brightly lit sky (Camera Mobileye + Radar)*
- ✓ *The human driver was not vigilant & didn't took over*



- ❑ **Self-driving Uber L3 vehicle killed a woman**  
=> *First fatal crash involving a pedestrian*  
*Tempe, Arizona, March 2018*

- ✓ *Despite the presence of multiple sensors (lidars, cameras ...), the perception system failed to detect the pedestrian & didn't disengaged*
- ✓ *The Safety Driver reacted too lately (1s before the crash)*



# AVs have to face two main challenges

## Challenge 1: The need for **Robust, Self-diagnosing & Explainable Embedded Perception**



*Video source: AutoPilot Review @ youtube.com*

### **Video Scenario:**

- The Tesla perception system failed to detect the barriers blocking the left side route.*
- The driver has to take over and steer the vehicle away from the blocked route (for avoiding the collision).*



# AVs have to face two main challenges

## Challenge 2: The need for Understandable **Driving Decisions** (*share the road with human drivers*)

Human drivers actions are determined by a complex set of interdependent factors difficult to model  
(e.g. intentions, perception, emotions ...)

⇒ Predicting **human driver behaviors is inherently uncertain**

⇒ AV have to reason about **uncertain intentions** of the surrounding vehicles



The Lexus SUV, fitted with special sensors, struck the public bus on February 14 in Mountain View, California

Video source: *The Telegraph*

### Video scenario:

- Scene observed by the dash cam of a bus moving behind the Waymo AV
- Waymo AV is blocked by an obstacle and it decides to execute a left lane change
- The bus driver misunderstood the Tesla's intention and didn't yield
- The two vehicles collided

# Perception & Decision-making requirements for AVs

## Dynamic Scene Understanding & Navigation Decisions



### Situation Awareness & Decision-making

- ⇒ Sensing + Prior knowledge + Interpretation
- ⇒ Selecting appropriate Navigation strategy (planning & control)

## ADAS & Autonomous Driving



### Embedded Perception & Decision-making for Safe Intentional Navigation

## Dealing with unexpected events



### Anticipation & Risk Prediction required for avoiding an upcoming collision with "something"

- ⇒ High reactivity & reflexive actions
- ⇒ Focus of Attention & Sensing
- ⇒ Collision Risk estimation + Avoidance strategy

## Main features

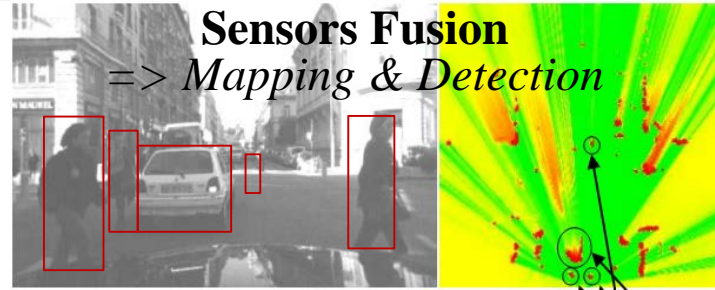
- ✓ Dynamic & Open Environments ⇒ *Real-time processing & Reactivity (several reasoning levels are required)*
- ✓ Incompleteness & Uncertainty ⇒ *Appropriate Model & Algorithms (probabilistic approaches)*
- ✓ Sensors limitations (no sensor is perfect) ⇒ *Multi-Sensors Fusion*
- ✓ Hardware / Software integration ⇒ *Satisfying Embedded constraints*
- ✓ Human in the loop (mixed traffic) ⇒ *Human Aware Decision-making process (AI based technologies)*  
*Taking into account Interactions + Behaviors + Social rules (including traffic rules)*



# 1<sup>st</sup> Paradigm : Embedded Bayesian Perception



**Embedded Multi-Sensors Perception**  
⇒ *Continuous monitoring of the dynamic environment*



## ❑ Main challenges

- ✓ *Noisy data, Incompleteness, Dynamicity, Discrete measurements*
- ✓ *Strong Embedded & Real time constraints*

## ❑ Our Approach: Embedded Bayesian Perception

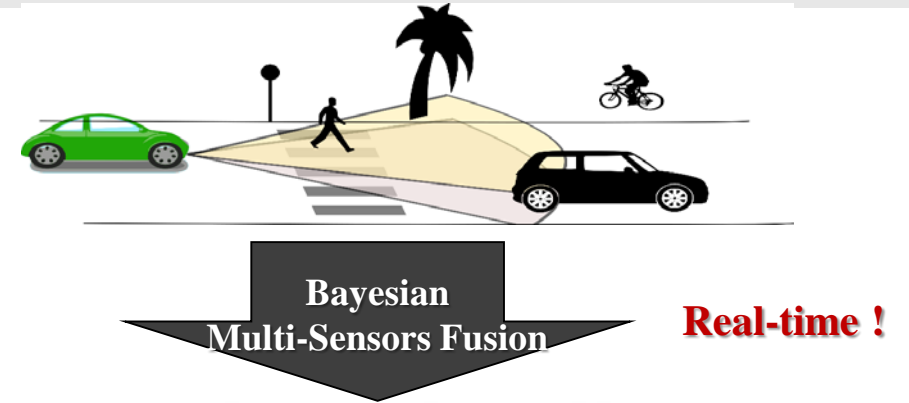
- ✓ *Reasoning about Uncertainty & Time window (Past & Future events)*
- ✓ *Improving robustness using Bayesian Sensors Fusion*
- ✓ *Interpreting the dynamic scene using Contextual & Semantic information*
- ✓ *Software & Hardware integration using GPU, Multicore, Microcontrollers...*



# Bayesian Perception : Basic idea

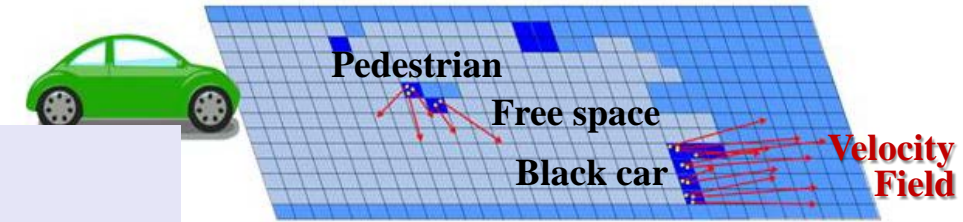
## Multi-Sensors Observations

*Lidar, Radar, Stereo camera, IMU ...*



## Probabilistic Environment Model including Dynamics

$P[o|Z,C]$  : ■  $\approx 0$  ■  $\approx 0.5$  ■  $\approx 1$



### Concept of “Dynamic Probabilistic Grid + Bayesian Filtering”

- ⇒ Clear distinction between *Static & Dynamic & Free* components
- ⇒ Occupancy & Velocity probabilities
- ⇒ Designed for *Highly Parallel Processing* (to satisfy real-time constraints)
- ⇒ Includes Embedded Models for Motion Prediction & Collision Risk Assessment
- ⇒ Patented technology & Industrial licenses 2018 (Toyota, Easymile)

*[PhD Thesis Coué 2005]*  
*[Coué & Laugier IJRR 2005]*  
*[Laugier et al ITSM 2011]*  
*[Rummelhard et al ITSC 2015]*  
*[Mooc uTOP 2015]*

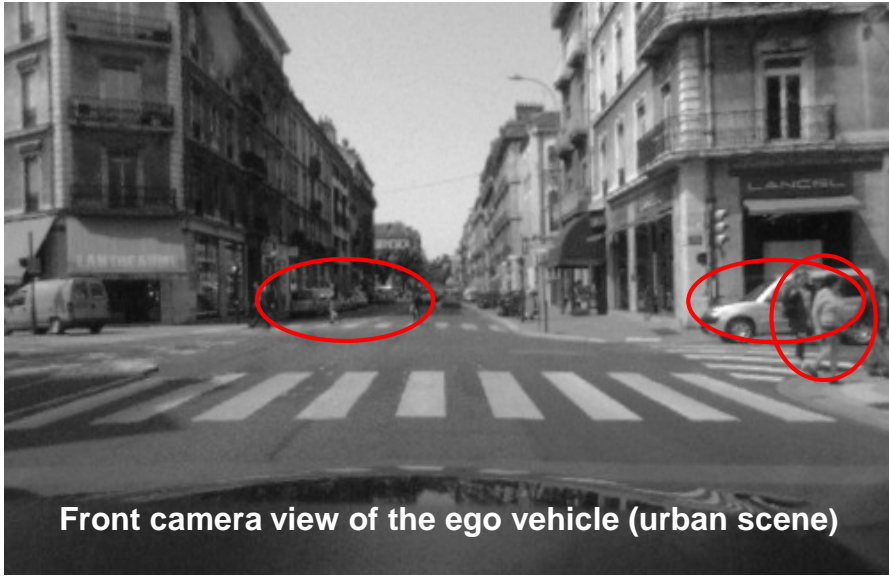
## Main philosophy

*Reasoning at the grid level as far as possible for both :*

- *Improving Efficiency & Reactivity to unexpected events* => *Highly parallel processing & High frequency !*
- *Avoiding most of traditional object level processing problems* (e.g. detection errors, wrong data association...)

# Dynamic Probabilistic Grid & Bayesian Filtering – *Main Features*

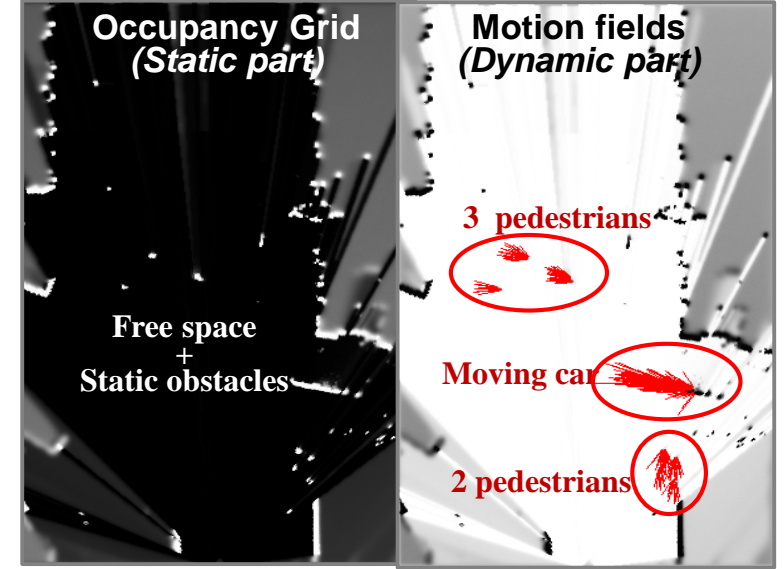
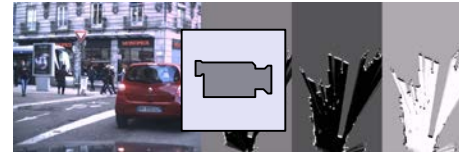
=> Exploiting the dynamic information for a better understanding of the scene



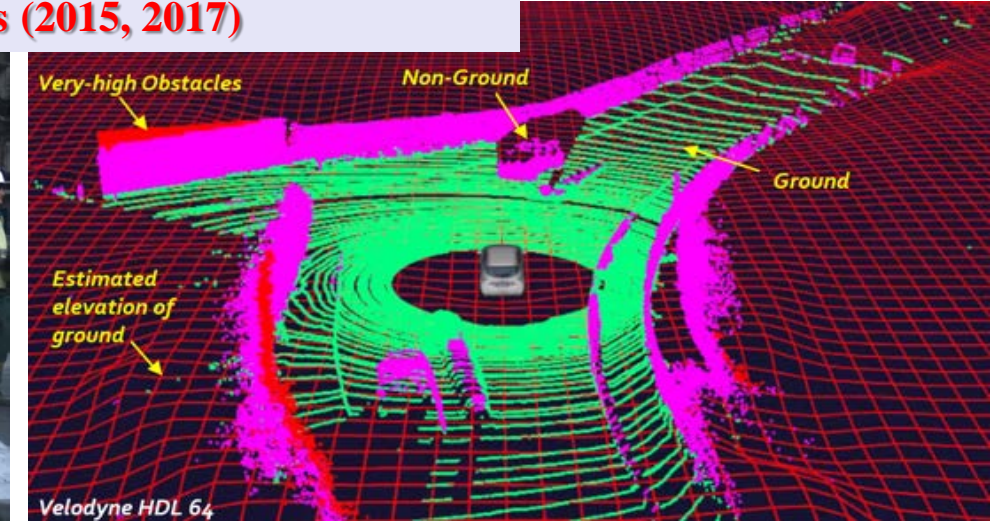
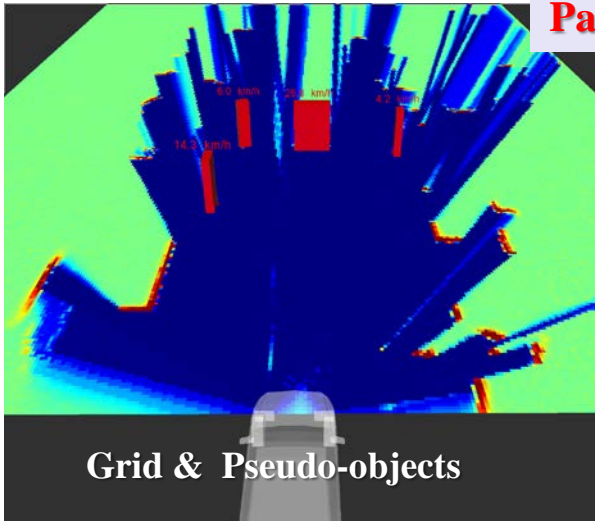
Sensors data fusion  
+  
Bayesian Filtering  
+  
Extracted Motion Fields



1<sup>st</sup> Embedded & Optimized version  
(HSBOF, patent 2014)



## Patented Improvements & Implementations (2015, 2017)



Detection & Tracking + Moving Objects Classification  
=> CMCDOT 2015 (including a “Dense Occupancy Tracker”)

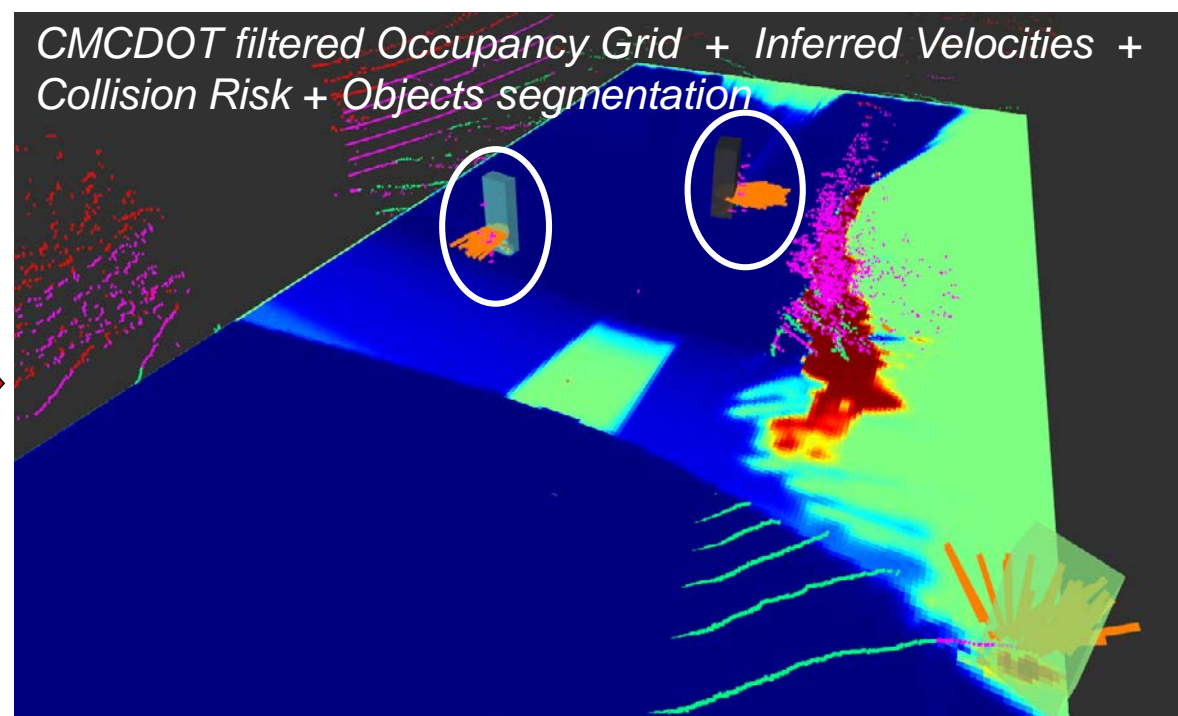
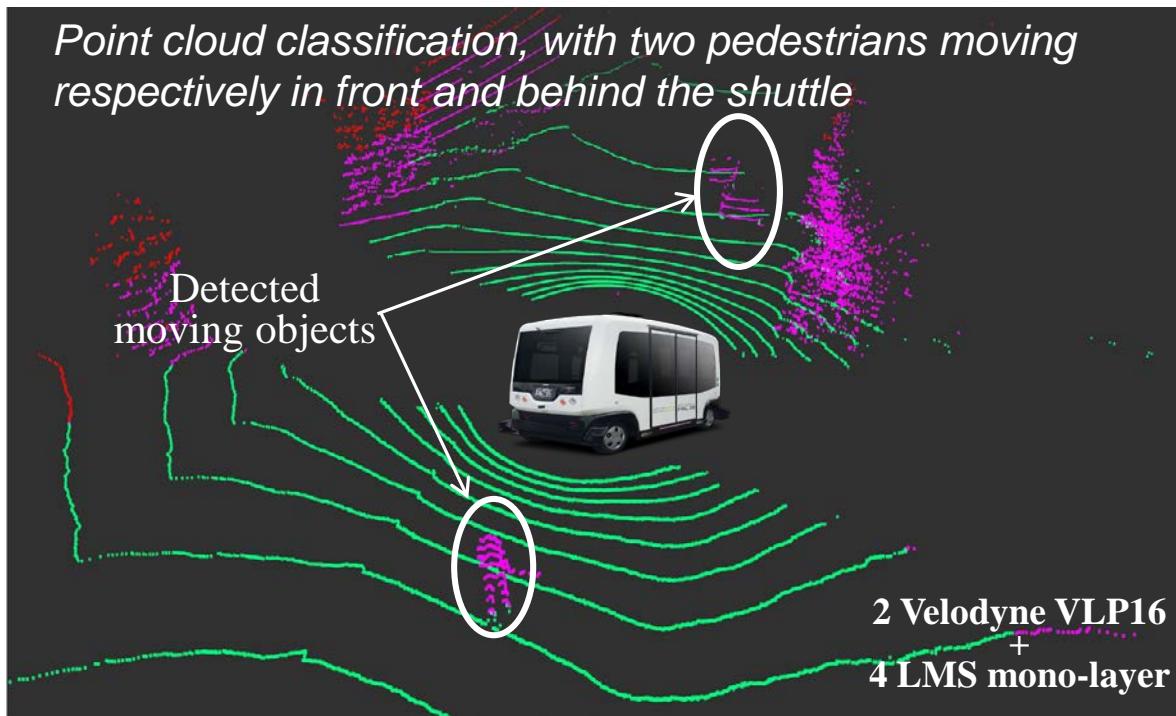
Ground Estimation & Point Cloud Classification  
(patent 2017)



# System Integration on a commercial vehicle

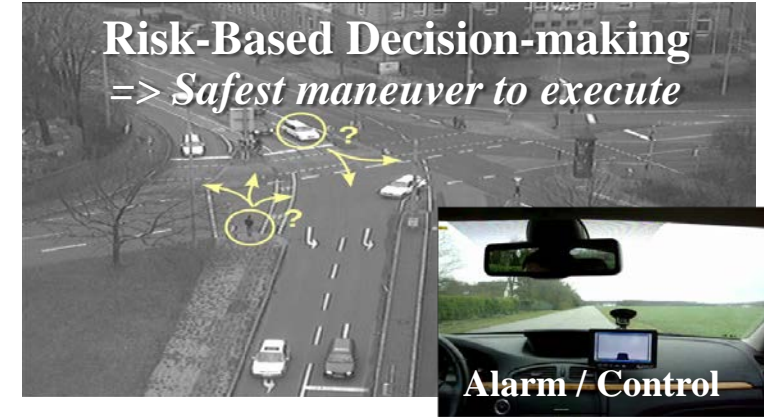
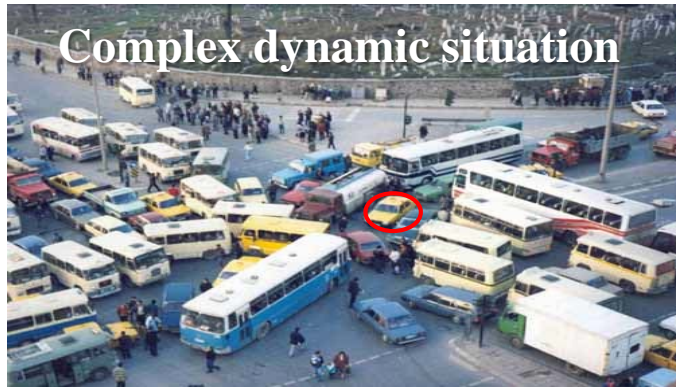


- **POC 2019: Complete system implemented on Nvidia TX1**, and easily connected to the shuttle system network *in a few days* (using ROS)
- **Shuttle sensors data** has been fused and processed in **real-time**, with a successful Detection & Characterization of the **Moving & Static Obstacles**
- **Full integration on a commercial product** under development with an industrial company (confidential)



# 2<sup>nd</sup> Paradigm: Collision Risk Assessment & Decision-making

=> *Decision-making for avoiding Pending & Future Collisions*



## □ Main challenges

*Uncertainty, Partial Knowledge, World changes, Real time*

*Human in the loop + Unexpected events + Navigation Decision based on Perception & Prior Knowledge*

## □ Approach: Prediction + Risk Assessment + Bayesian Decision-making

✓ Reason about *Uncertainty & Contextual Knowledge* (using *History & Prediction*)

✓ Estimate Probabilistic Collision Risk at a given *time horizon*  $t+\delta$  ( $\delta =$  a few seconds ahead)

✓ Make Driving Decisions by taking into account the *Predicted behavior of all the observed surrounding traffic participants* (cars, cycles, pedestrians ...) & *Social / Traffic rules*

## □ Decision-making: Two types of “collision risk” have to be considered

✓ *Short-term collision risk* => *Imminent collisions with “something” (unclassified), time horizon <3s, conservative hypotheses*

✓ *Long-term collision risk* => *Future potential collisions, horizon >3s, Context + Semantics, Behavior models*



# **Concept 1: Short-term collision risk** (*Basic idea*)

=> *How to deal with unexpected & unclassified events (i.e. “something” is moving ahead) ?*

=> *Exploit previous observations for anticipating future objects motions & related potential future collision*

Autonomous  
Vehicle (Cycab)



Parked Vehicle  
(occultation)

**Pioneer Results  
(2005)**

*[PhD Thesis C. Coué 2004]  
[Coué & Laugier & al IJRR 05]*

Thanks to the prediction capability of the BOF technology, the Autonomous Vehicle “anticipates” the pedestrian motion and brakes (*even if the pedestrian is temporarily hidden by the parked vehicle*)

# Short-term collision risk – *Main Features & Results*

*=> Grid level & Conservative motion hypotheses (proximity perception)*

Proximity perception:  $d < 100m$  and  $t < 5s$

$\delta = 0.5s$  => Precrash

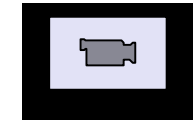
$\delta = 1s$  => Collision mitigation

$\delta > 1.5s$  => Warning / Emergency Braking

## □ Main Features

- Detect “*Upcoming potential Collisions*” a few seconds ahead (3-5s) in the *Dynamic Grid*
- Risky situations are *both localized in Space & Time* (under conservative motion hypotheses)
- Resulting information is used for choosing the most appropriate *Collision Avoidance Maneuvers*

## □ Experimental results



### Collision Risk Assessment (video 0:45)

- **Yellow** => time to collision: 3s
- **Orange** => time to collision: 2s
- **Red** => time to collision: 1s



# Concept 2: Long-term Collision Risk (*Object level*)

=> Increasing time horizon & complexity using **Context & Semantics**

=> Key concepts: **Behaviors Modeling & Prediction + Traffic Participants Interactions**

## Decision-making in complex traffic situations

- ✓ Understand the current traffic situation & its likely evolution
- ✓ Evaluate the Risk of future collision by reasoning on traffic participants Behaviors
- ✓ Takes into account Context & Semantics

*Highly structured environment & Traffic rules  
make Prediction more easy*

### **Context & Semantics**

*History + Space geometry + Traffic rules*

+

### **Behavior Prediction & Interactions**

*For all surrounding traffic participants  
(using learned models)*

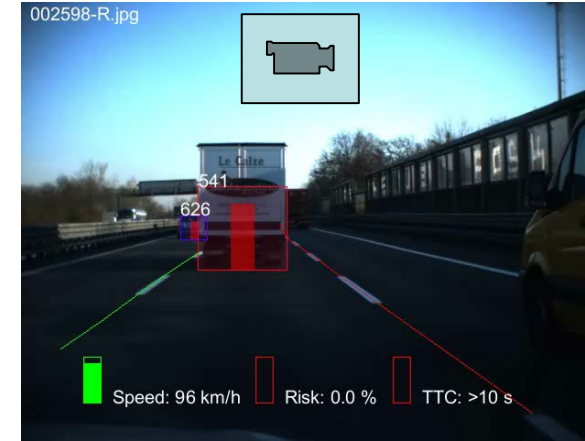
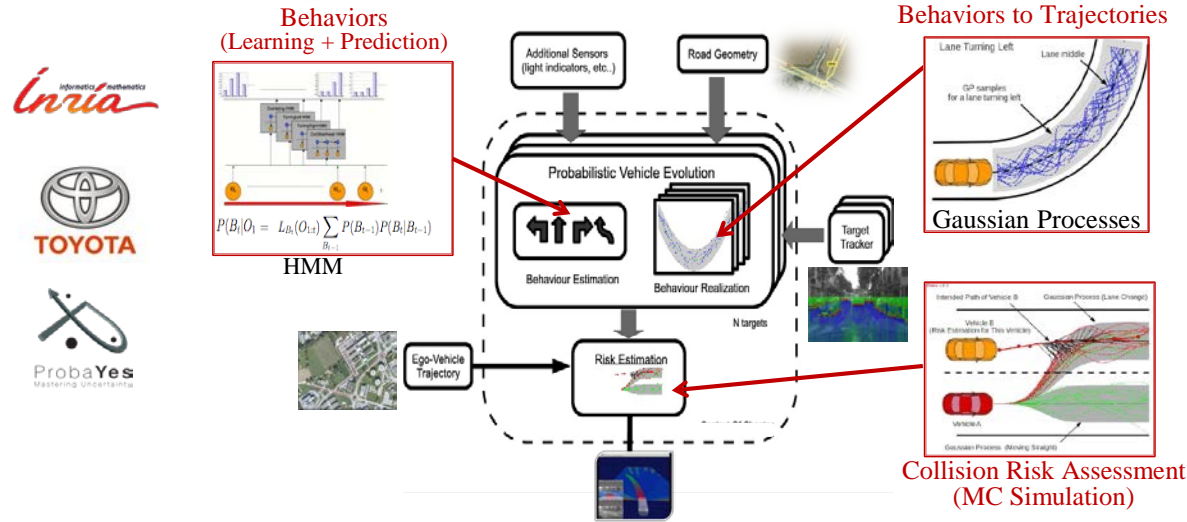
+

### **Probabilistic Risk Assessment**

# Behavior-based Collision risk – Main approaches & Results

=> Increased time horizon & complexity + Reasoning on Behaviors & Interactions

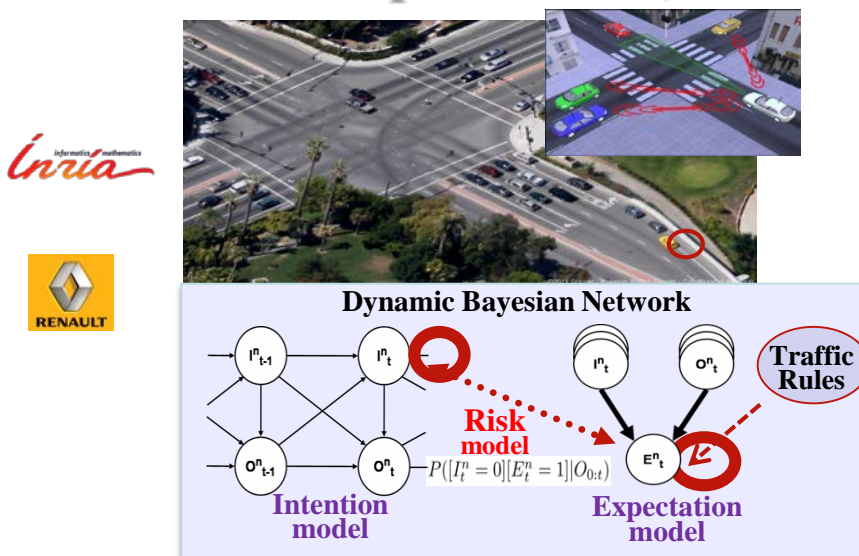
## □ Trajectory prediction & Collision Risk => Patent 2010 (Inria, Toyota, Probayes)



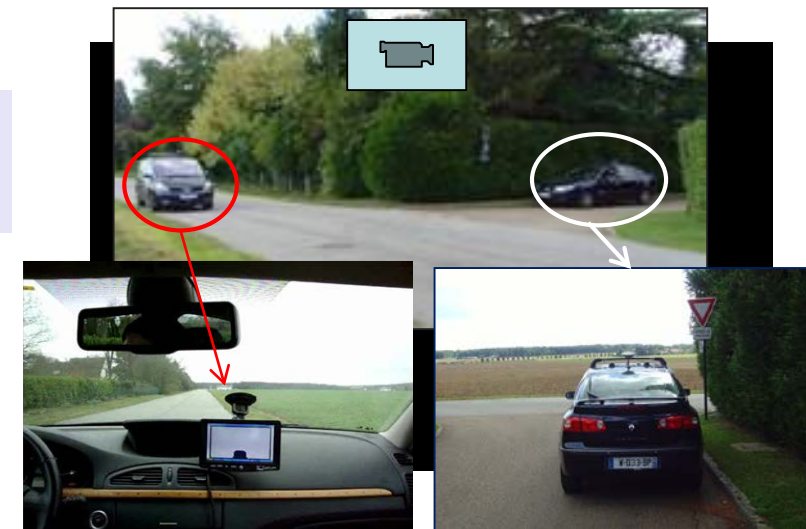
Cooperation still on-going (R&D contracts + PhD)

Courtesy Probayes

## □ Intention & Expectation (Mixed Traffic & Interactions) => Patents 2012 (Inria - Renault) & 2013 (Inria - Berkeley)



Human-like reasoning



Cooperation still on-going (R&D contracts + PhD)



# 3<sup>rd</sup> Paradigm: Models improvements using Machine Learning

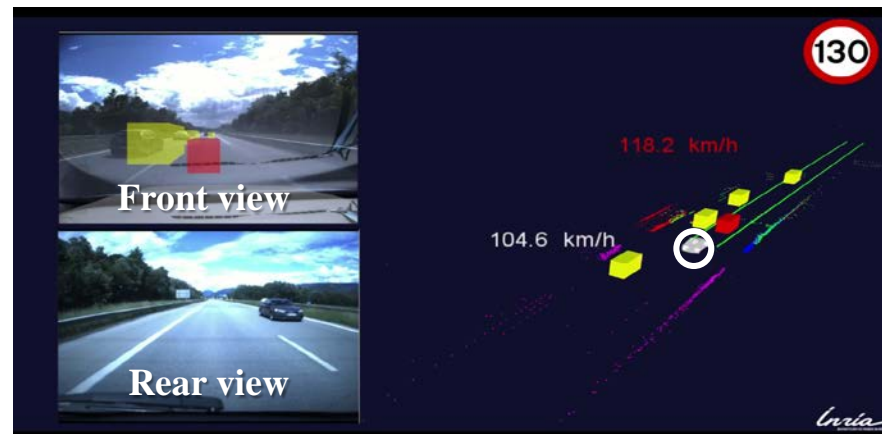
□ Perception level: *Construct “Semantic Grids” using Bayesian Perception & DL*



□ Decision-making level: *Learn driving skills for Autonomous Driving*

❖ *1<sup>st</sup> Step: Modeling Driver Behavior using Inverse Reinforcement Learning (IRL)*

❖ *2<sup>nd</sup> Step: Predict motions of surrounding vehicles & Make Driving Decisions for Ego Vehicle*

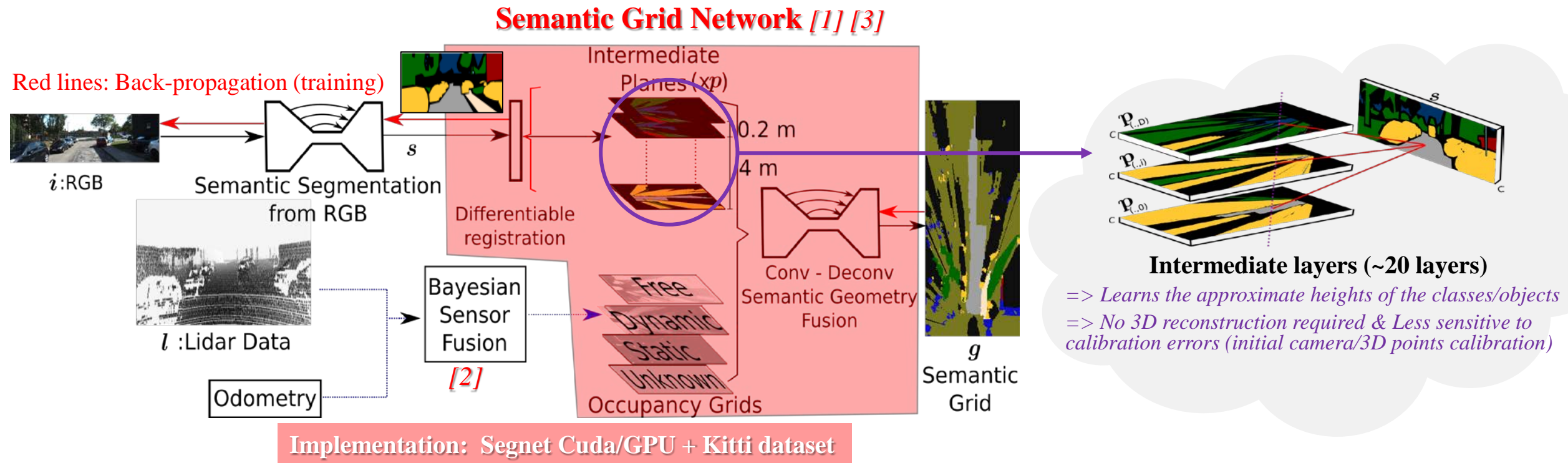


# Perception Level: Semantic Grids (Bayesian Perception + DL)

**Objective:** Add *Semantic information* (cars, pedestrians, roads, buildings...) in each cell of the Dynamic Occupancy Grid model, by exploiting *additional RGB inputs*

**Approach:** A new “*Hybrid Sensor Fusion approach*” combining *Bayesian Perception & Deep Learning*

[1] [2] + Patent 2019 (Inria, Toyota)



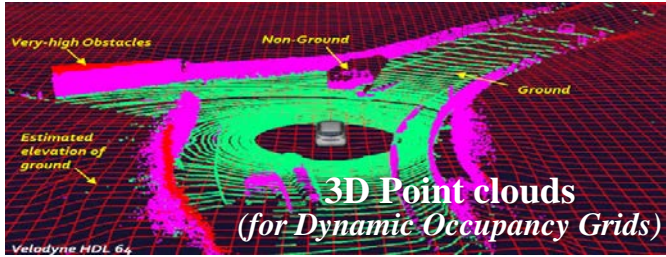
[1] Semantic grid estimation with a Hybrid Bayesian and Deep Neural Network approach, O. Erkent et al., IEEE IROS 2018

[2] Conditional Monte Carlo Dense Occupancy Tracker, Rummelhard et al., ITSC 2015

[3] Segnet: A deep convolutional encoder-decoder architecture for image segmentation, Badrinarayanan et al., IEEE PAMI 39(12) 2017



# Semantic Grids – *Experimental Evaluation Approach*



**Frontal View (RGB camera)**



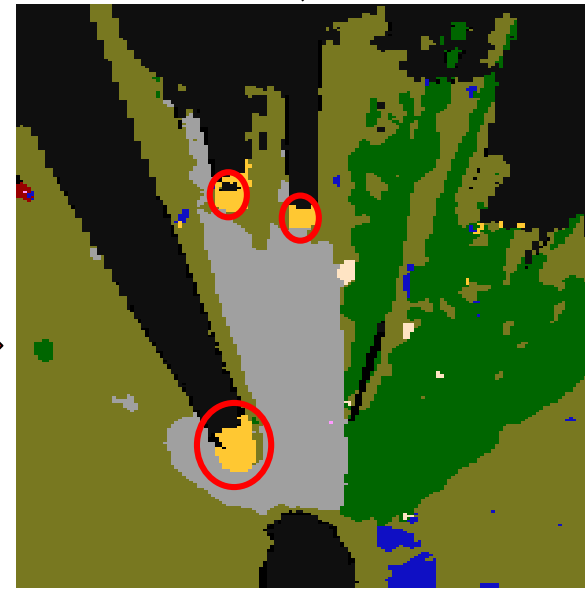
**Frontal View Ground-Truth**  
=> labelled by humans in datasets

## Hybrid Sensor Fusion approach (Semantic Grid construction)



**Bird's Eye View Ground-Truth**  
=> Frontal View GT "projected" using Point-Cloud (Bayesian Perception)  
=> Densified by humans (point-clouds and images have different resolutions)

**Comparison**



**Semantic Grid Prediction**  
=> Dense structure obtained using hybrid integration

- |            |
|------------|
| Unknown    |
| Building   |
| Sky        |
| Road       |
| Vegetation |
| Sidewalk   |
| Car        |
| Pedestrian |
| Cyclist    |
| Signage    |
| Fence      |
| Free       |
| Static     |
| Dynamic    |

**Labels**

# Semantic Grids – Experimental Results & Current work

Ground Truth (GT)



GT Projection



Semantic Grid Estimation



Frontal View Estimation



Ground Truth (GT)



GT Projection



Semantic Grid Estimation



Frontal View Estimation



○ **Fence** not detected in frontal view estimation ... but **recognized as an obstacle in semantic grid** (with the help of Dynamic Occupancy Grid)

○ **Truck** not detected in frontal view estimation ... but **recognized in semantic grid** (with the help of Dynamic Occupancy Grid)

**2 cars** not detected in frontal view estimation (semantic segmentation) ... but **recognized in semantic grid** (with the help of Dynamic Occupancy Grid)

## Current Work

- Improve accuracy with more dense training datasets
- Implementation on embedded systems for real-time process
- Adaptation to bad weather conditions
- Panoptic segmentation & tracking





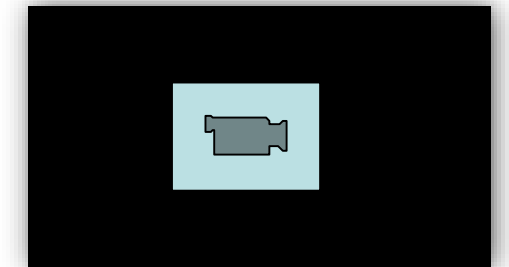
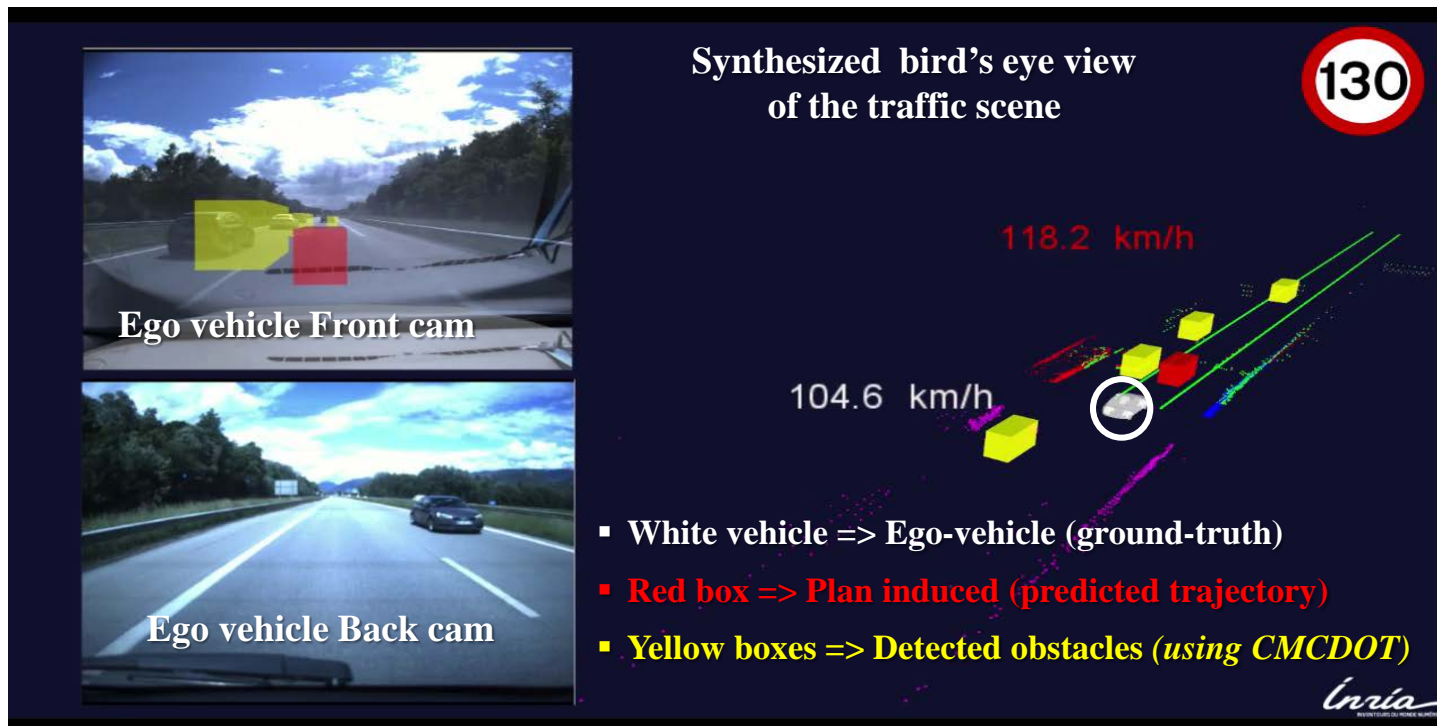
# Decision-making level: Learning Driving Skills for AD

## 1<sup>st</sup> Step: Driver behavior modeling

[Sierra Gonzalez et al, ICRA 2018]

- Learn Model parameters from real driving demonstrations using *Inverse Reinforcement Learning (IRL)*
- Driver behaviors are modelled using a Cost function  $\mathcal{C}(s) = \sum_{i=1}^K w_i \cdot f_i(s)$  which is assumed linear on a set of **K hand-crafted features** (e.g. Lane index preferences, Deviation from desired velocity, Time-to-collision to frontal targets, Time-gap to rear targets ...)
- A training set containing “*interesting highway vehicle interactions*” was constructed out of 20 minutes of highway driving data & used to automatically learn the balance between features. *We are extending the approach using larger datasets and various traffic conditions.*

=> Obtained models can be leverage to **Predict human driver behaviors & Generate human-like plans for the ego vehicle** (mandatory in mixed traffic)




Comparison between demonstrated behavior in test set & behavior induced by the learned model


# Decision-making level: Learning Driving Skills for AD

## 2<sup>nd</sup> Step: Motion Prediction & Driving Decisions


- A realistic **Human-like Driver Model** can be exploited to **Predict the long-term evolution** (10s and beyond) of traffic scenes [Sierra Gonzalez et al., ITSC 2016]
  - For the **short/mid-term**, both the **Driver model** and the **Dynamics of the target** provide useful information to **determine future driving behaviors**
- => Our **probabilistic model** fuses **Model-based Predictions & Dynamic evidence** to produce robust **lane change intention estimations** in highway scenes [Sierra Gonzalez et al., ICRA 2017]



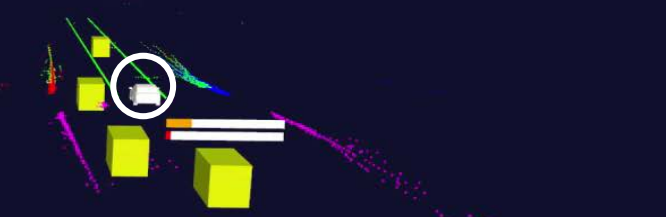
Synthesized bird's eye view of the traffic scene & Over vehicles expected intentions



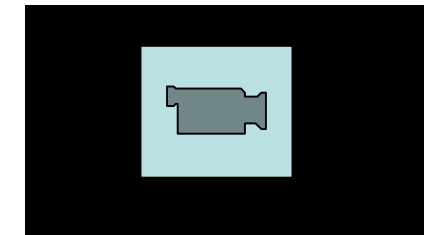
Ego vehicle Front cam



Ego vehicle Back cam



- **Orange bar** => *Probability that the target executes a lane change according to the model (given the traffic situation)*
- **Red bar** => *Final lane change intention probability (fusing model-based prediction & dynamic evidence)*



Comparison between demonstrated behaviors in test set & behaviors induced by the learned model & dynamics evidence



# Experimental Vehicles & Connected Perception Units

## Toyota Lexus

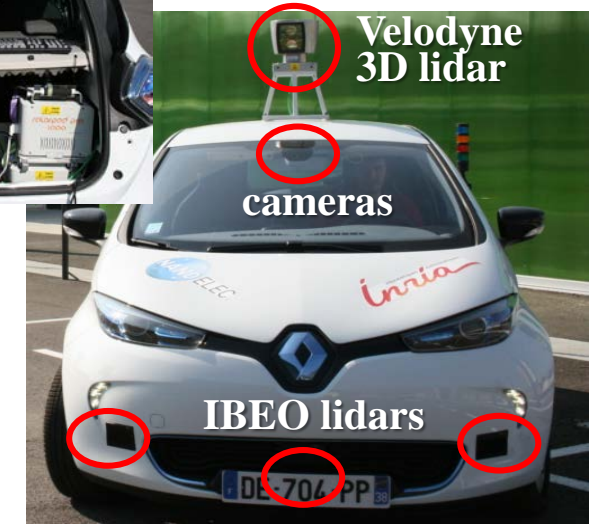


ROS

RT-Maps  
*under development*



## Renault Zoé



## Connected Perception Unit (V2X communication)

*Same embedded perception systems than in vehicles*

*=> Exchanging only relevant information (e.g. Risk parameters)*

Nvidia GTX Titan X  
Generation Maxwell



Nvidia GTX Jetson TK1  
Generation Maxwell



Nvidia GTX Jetson TX1  
Generation Maxwell



# Experimental Areas

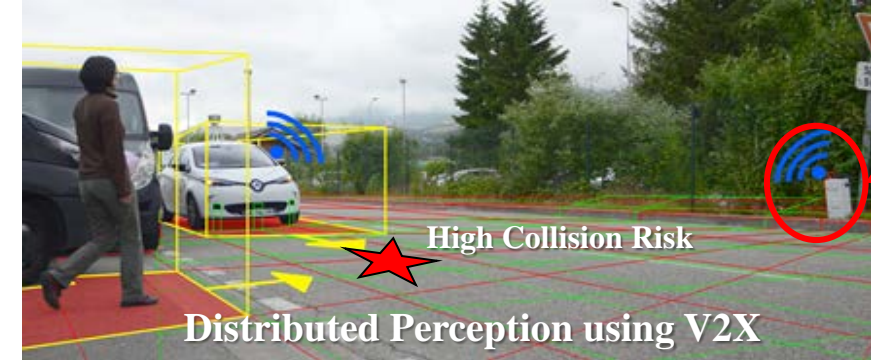
- ❑ Protected experimental area => *Testing Autonomous Driving L3 & L4*



Crash test track



Connected Perception Unit



- ❑ Open real traffic (Urban & Highway) => *Testing Autonomous Driving L2 (ADAS)*





# Summary & On going work

## □ Autonomous Driving in various Traffic & Context situations (*cooperation with industry*)



Autonomous Shuttles  
(~15 km/h, Urban traffic)



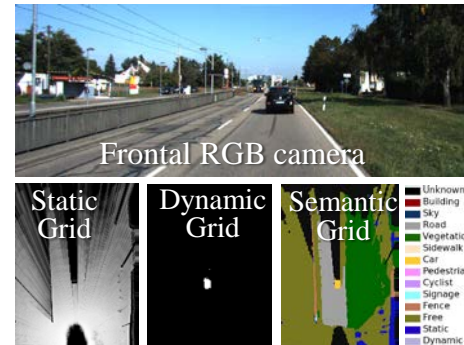
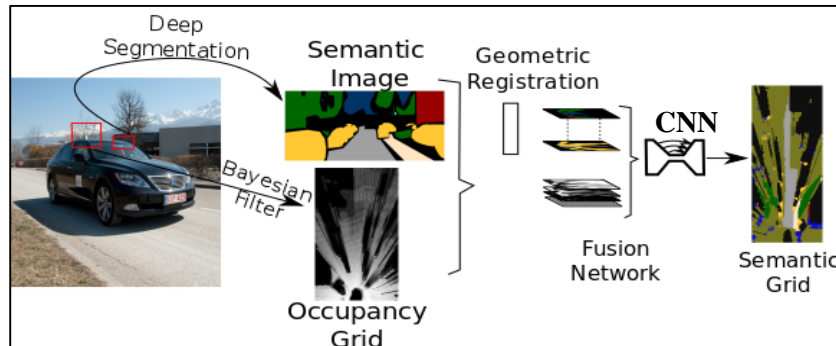
Autonomous Bus (Iveco)  
(up to 70 km/h, Urban traffic)



Autonomous Renault Zoe  
(up to 70 km/h, Urban traffic)

- Various Dynamics & Motion constraints & Contexts
- Adapted “Collision Risk” & “Collision avoidance maneuvers” (Risk & Maneuver characterization)
- **Cooperation IRT Nanoelec, Renault, Iveco ...**

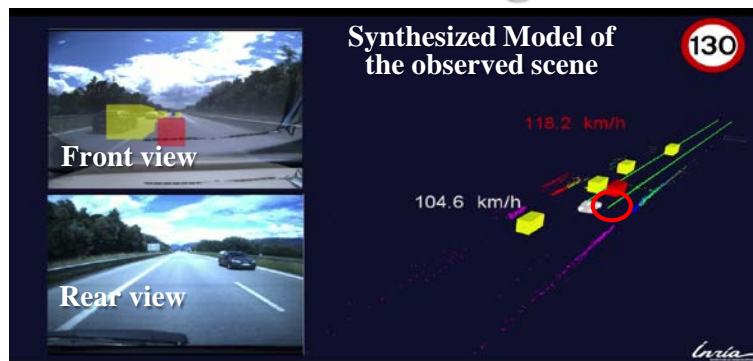
## □ Embedded & Extended “Semantic Grids”



- Embedded “Semantic Grids” & “Panoptic Segmentation”
- Improved scene understanding (various weather conditions)
- **Cooperation Toyota**
- *1 Patent & 3 publications (IROS'18, ICARCV'18, Unmanned System journal 2019)*

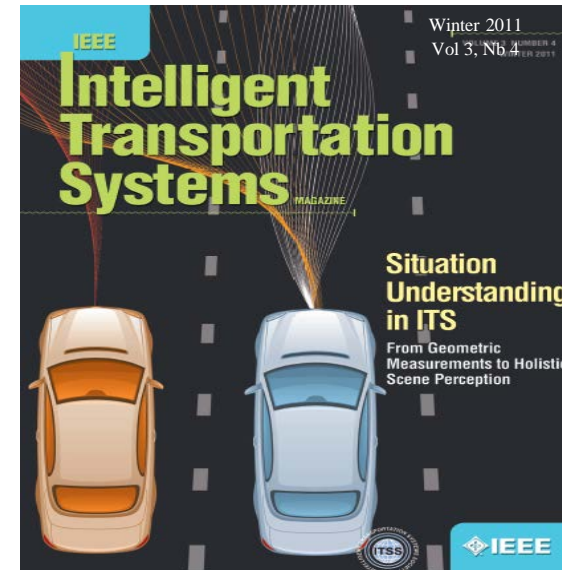
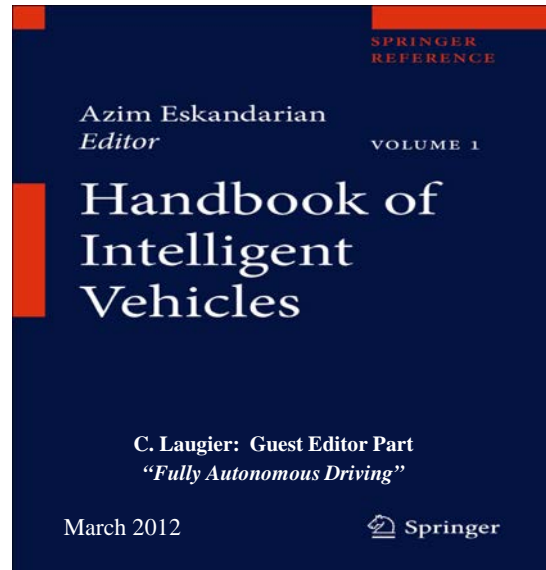
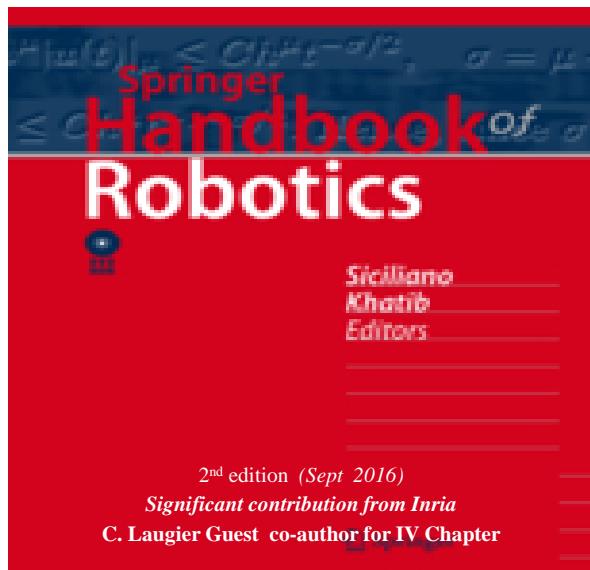


## □ Autonomous Driving in mixed traffic (Prediction & Planning) using learned models



- **Driver Behavior modeling** using Driving dataset & Inverse Reinforcement Learning => *Human-like Driver Model (for mixed traffic)*
- **Motion Prediction & Driving Decision-making for AD** performed by combining “learned Driver models” & “Dynamic evidences”
- **Cooperation Toyota**
- *2 Patents & 3 publications (ITSC 2016, ICRA 2017, ICRA 2018) & PhD Thesis 2019*





# Thank You

