



HAL
open science

Optimal Actuation of Flagellar Magnetic Micro-Swimmers

Yacine El Alaoui-Faris, Jean-Baptiste Pomet, Stéphane Régnier, Laetitia
Giraldi

► **To cite this version:**

Yacine El Alaoui-Faris, Jean-Baptiste Pomet, Stéphane Régnier, Laetitia Giraldi. Optimal Actuation of Flagellar Magnetic Micro-Swimmers. *Physical Review E: Statistical, Nonlinear, and Soft Matter Physics*, 2020, 10.1103/PhysRevE.101.042604 . hal-02350868v2

HAL Id: hal-02350868

<https://inria.hal.science/hal-02350868v2>

Submitted on 28 Oct 2020

HAL is a multi-disciplinary open access archive for the deposit and dissemination of scientific research documents, whether they are published or not. The documents may come from teaching and research institutions in France or abroad, or from public or private research centers.

L'archive ouverte pluridisciplinaire **HAL**, est destinée au dépôt et à la diffusion de documents scientifiques de niveau recherche, publiés ou non, émanant des établissements d'enseignement et de recherche français ou étrangers, des laboratoires publics ou privés.

Optimal Actuation of Flagellar Magnetic Micro-Swimmers

Yacine El Alaoui-Faris

*Université Côte d’Azur, Inria, CNRS, LJAD, McTAO team, Nice, France and
Sorbonne Université, CNRS, ISIR, Paris, France*

Jean-Baptiste Pomet

Université Côte d’Azur, Inria, CNRS, LJAD, McTAO team, Nice, France

Stéphane Régnier

Sorbonne Université, CNRS, ISIR, Paris, France

Laetitia Girdali

Université Côte d’Azur, Inria, CNRS, LJAD, McTAO team, Nice, France

(Dated: October 28, 2020)

We present an automated procedure for the design of optimal actuation for flagellar magnetic microswimmers based on numerical optimization. Using this method, a new magnetic actuation method is provided which allows these devices to swim significantly faster compared to the usual sinusoidal actuation. This leads to a novel swimming strategy which makes the swimmer perform a 3D figure-8 trajectory. This shows that a faster propulsion is obtained when the swimmer is allowed to go out-of-plane. This approach is experimentally validated on a scaled-up flexible swimmer.

I. INTRODUCTION

Untethered robotic micro-swimmers have the potential to make a serious impact on the development of new promising therapeutic techniques [1–7]. However, due to their microscopic size, controlling their navigation through fluids inside the body faces numerous challenges [8, 9]. These devices can take different shapes and designs (helical [10–12], beating flexible tail [13, 14], 2-linked structure [15], ciliary micro-robots [16], etc.), and are actuated using multiple methods like chemical fuel propulsion [17, 18], acoustic-based actuation [19], or external magnetic fields [1, 20]. In this paper, we focus on sperm cell-inspired robotic swimmers composed of a magnetic head and an elastic tail and actuated by external magnetic fields [14, 21]. As far as we know, the most commonly used actuation method for these swimmers is sinusoidal actuation. This consists in applying the superposition of a static orientating magnetic field parallel to the desired swimming direction and a perpendicular sinusoidal field that induces a planar symmetric beating of the tail, allowing a displacement along the swimming direction ([22]). The purpose of this paper is to propose an automatic design method for the actuation of flexible magnetic micro-robots that optimizes the swimming speed. The aim of this work is twofold: firstly, to provide a more efficient alternative to the commonly used sinusoidal actuation, and, secondly, to present an optimal control design method that can be adapted to deal with more demanding tasks, like swimming in a complex environment. Our method is based on the resolution of an optimal control problem under the constraints of an approximate dynamical model of the swimmer’s displacement. In particular, we focus on computing a magnetic field shape that

maximizes the horizontal swimming speed of these devices. This actuation pattern is experimentally validated on a scaled-up flexible magnetic swimmer and compared to the classical sinusoidal actuation. The key for this approach is the use of a dynamical model that is sufficiently computationally inexpensive to be used as a constraint for an optimization process but still accurate enough to predict the displacement of a real-life low Reynolds swimmer. For this purpose, we use a 3D simplified dynamic model based on the approximation of the hydrodynamical forces using Resistive Force Theory, [23, 24] and the discretization of the curvature and elasticity of the tail of the swimmer, generalizing the planar “N-Link” models of [25–27]. Using this dynamic model as a constraint, the optimal control problem is numerically solved with a direct method using the software *ICLOCS* [28]. This results in a magnetic actuation pattern that induces a significantly faster propulsion than the common sinusoidal actuation. The optimal magnetic field has two time-varying components which makes the trajectory of the swimmer non planar. In particular, the optimal swimming strategy is to perform a 3D ‘figure-8’ trajectory around the swimming direction. This indicates the importance of going out of plane in order to maximize the propulsion speed of flexible swimmers. The optimal actuation is experimentally validated on a scaled-up flexible magnetic swimmer using a similar setting as [21] and compared to the sinusoidal field. The horizontal displacement of the experimental swimmer is accurately predicted by the dynamic model for both fields. These results show the usefulness of the simplified swimmer model for the design of optimal controls that are usable in experiments.

II. EXPERIMENTAL SETTING

The flexible swimmer used in experiments consists of magnetic disk (Neodymium-Iron-Boron permanent magnet) with $0.3mm$ in height and $0.77mm$ in diameter attached to a silicone tail with $7mm$ in length and $1mm$ in diameter (see Figure 1). The swimmer is immersed in pure glycerol to ensure low-Reynolds conditions ($\approx 10^{-2}$). It is placed at the center of three orthogonal Helmholtz coil pairs that generate the actuating magnetic field. Each pair of coils is driven by a servoamplifier (Maxon Motor) which outputs a constant current for a fixed input voltage. Two cameras provide a side view and a top view of the swimmer, and its position in 3D is tracked in real-time using Visp software [29]. More information on the experimental setting used can be found in [21, 30].

We consistently use a fixed frame (x, y, z) where the z axis is vertical and the y axis is along the axis of the side camera. In what follows, the desired swimming direction will be along the x -axis.

The propulsion of the experimental swimmer is characterized by measuring its velocity-frequency response (given by the dotted line in Figure (3)) under a magnetic field of the form :

$$\mathbf{B}(t) = (B_x \ B_y \sin(2\pi ft) \ 0)^T, \quad (1)$$

where $B_x = 2.5mT, B_y = 10mT$.



FIG. 1. Experimental setup ([21]). The three orthogonal Helmholtz coils generate a homogeneous magnetic field in the center, where the swimmer has been placed. The swimmer is tracked using two perpendicular cameras. In the corner: Scaled-up flexible magnetic swimmer used in the experiments.

III. MODELING OF THE SWIMMER

A simplified dynamical model of the swimmer is used to simulate the swimmer's displacement under a three-dimensional magnetic field. The hydrodynamic effects on the swimmer are approximated by Resistive Force Theory [23] and the shape of the tail is discretized into an articulated chain of N rigid slender rods, as done in the planar swimmer models of [25–27].

A. Kinematics of the swimmer

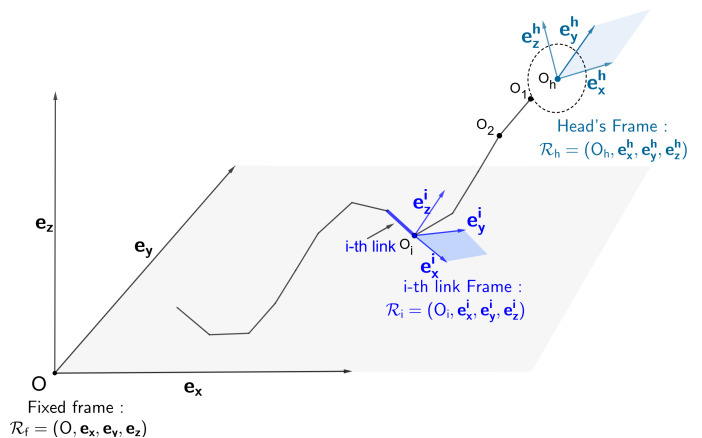


FIG. 2. Reference and local frames of the discrete-shape model. The swimmer's head frame is oriented relative to the reference frame. For each link i , the corresponding local frame \mathcal{R}_i is oriented relative to \mathcal{R}_h .

We consider a moving frame $\mathcal{R}_{head} = (O_h, \mathbf{e}_x^h, \mathbf{e}_y^h, \mathbf{e}_z^h)$ associated to the head of the swimmer, where O_h is the center of the head. The orientation of each link i is represented by the moving frame $\mathcal{R}_i = (O_i, \mathbf{e}_x^i, \mathbf{e}_y^i, \mathbf{e}_z^i)$, where O_i is the extremity of the i -th link. We call $R_{head} \in SO(3)$ the rotation matrix that allows the transformation of coordinates from the fixed reference frame to \mathcal{R}_{head} . Similarly, the matrix $R_i \in SO(3)$, for $i = 1 \dots N$, denotes the relative rotation matrix that transforms coordinates from \mathcal{R}_{head} to \mathcal{R}_i . We use the angles $(\theta_x, \theta_y, \theta_z)$ resulting from a $(Z - X - Y)$ rotation sequence to parametrise R_{head} . Since each link is considered to be slender and axisymmetric, the vectors \mathbf{e}_y^i and \mathbf{e}_z^i are only defined up to one rotation around, hence we parametrize each matrix R_i by only two angles (ϕ_y^i, ϕ_z^i) , resulting from a $Z - Y$ rotation sequence relative to the head frame.

With these notations, the swimmer is described by two sets of variables : The 6 *Position variables*: (\mathbf{X}, Θ) where

$$\begin{aligned} \mathbf{X} &= (x_h, y_h, z_h) \in \mathbb{R}^3 \text{ and} \\ \Theta &= (\theta_x, \theta_y, \theta_z) \in [0, 2\pi]^3, \end{aligned} \quad (2)$$

, and the $2N$ *Shape variables*, denoted by

$$\Phi = (\phi_y^1, \phi_z^1, \dots, \phi_y^N, \phi_z^N). \quad (3)$$

B. Dynamics of the swimmer

We assume that the swimmer is immersed in an unbounded domain of a viscous fluid. Due to its scale, we consider that the swimmer moves at low Reynolds Number, i.e., that viscosity prevails over inertia, and thus that the fluid is governed by Stokes equations. In what follows, the hydrodynamical interactions between the fluid and the swimmer are further simplified by using the Resistive Force Theory (RFT) framework [23], where the interactions on the global scale between a slender Stokesian swimmer and the surrounding fluid are neglected in favor of the local anisotropic friction of the surface of the slender body with the nearby fluid. This results in explicit expressions of the density of force applied by the fluid to the swimmer that are linear with respect to the velocities, hence to $(\dot{\mathbf{X}}, \dot{\Theta}, \dot{\Phi})$.

From the integration of the local hydrodynamic force densities on each link, we are able to obtain the expression of \mathbf{F}_{head}^h and \mathbf{F}_i^h , the hydrodynamic drag forces on the head of the swimmer and on each link $i \in (1, \dots, N)$ respectively. The expressions for $\mathbf{T}_{head,P}^h$ and $\mathbf{T}_{i,P}^h$, the moments of these forces about any given point P , are similarly derived from the local drag densities. We consider that the head of the swimmer is magnetized along the e_x^h axis. Denoting by \mathbf{M} the magnetization vector of the head and considering an external homogeneous time-varying field $\mathbf{B}(t)$, the following torque is applied to the swimmer:

$$\mathbf{T}^{mag} = \mathbf{M} \times \mathbf{B}(t). \quad (4)$$

The acceleration terms in the dynamics are neglected due to the Low Reynolds assumption [31], thus, the balance of forces and torques applied on the swimmer gives:

$$\left\{ \begin{array}{l} \mathbf{F}_{head}^h + \sum_{i=1}^N \mathbf{F}_i^h = 0_3, \\ \mathbf{T}_{head}^h + \sum_{i=1}^N \mathbf{T}_{i,H}^h = -\mathbf{T}^{mag}, \end{array} \right. \quad (5)$$

which leads to 6 independent equations. In addition to these equations, the internal contributions of the tail are taken into account by adding the balance of torque on each subsystem consisting of the chain formed by the links i to N for $i = (1 \dots N)$. These additional $3N$ equations reduce to $2N$ non-trivial equations by taking only the components perpendicular to the link k when calculating the sum of the torques from k to N . The elasticity of the tail is discretized by considering a restoring elastic moment \mathbf{T}_i^{el} at each joint O_i that tends to align each pair $(i, i+1)$ of adjacent links with each other:

$$\mathbf{T}_i^{el} = k_{el} \mathbf{e}_x^i \times \mathbf{e}_x^{i-1}. \quad (6)$$

Thus, the dynamics of the swimmer are described by the

following system of $2N + 6$ equations :

$$\left\{ \begin{array}{l} \mathbf{F}_{head}^h + \sum_{i=1}^N \mathbf{F}_i^h = 0_3, \\ \mathbf{T}_{head}^h + \sum_{i=1}^N \mathbf{T}_{i,H}^h = -\mathbf{T}^{mag}, \\ \sum_{i=1}^N \mathbf{T}_{i,1}^h \cdot \mathbf{e}_y^1 = -\mathbf{T}_1^{el} \cdot \mathbf{e}_y^1, \\ \sum_{i=1}^N \mathbf{T}_{i,1}^h \cdot \mathbf{e}_z^1 = -\mathbf{T}_1^{el} \cdot \mathbf{e}_z^1, \\ \vdots \\ \mathbf{T}_{N,N}^h \cdot \mathbf{e}_y^n = -\mathbf{T}_n^{el} \cdot \mathbf{e}_y^n, \\ \mathbf{T}_{N,N}^h \cdot \mathbf{e}_z^n = -\mathbf{T}_n^{el} \cdot \mathbf{e}_z^n. \end{array} \right. \quad (7)$$

Following Resistive Force Theory, the hydrodynamic contributions (left-hand side of the previous system) are linear with respect to the rotational and translational velocities, thus, the previous system can be rewritten matrixially in the form :

$$M^h(\Theta, \Phi) \begin{pmatrix} \dot{\mathbf{X}} \\ \dot{\Theta} \\ \dot{\Phi} \end{pmatrix} = B(\mathbf{X}, \Theta, \Phi), \quad (8)$$

where $M^h(\Theta, \Phi)$ is a $2N + 6 \times 2N + 6$ matrix. The left-hand side of the equation represents the hydrodynamic effects on the swimmer and the right-hand side $B(\mathbf{X}, \Theta, \Phi)$ is the magnetic and elastic contributions on the swimmer. We refer the reader to the appendixA for the full derivation of the matrix M^h . The previous equation can be rewritten as a control system where the dynamics of the swimmer are affine with respect to the components of the actuating magnetic field viewed as a control:

$$\begin{pmatrix} \dot{\mathbf{X}} \\ \dot{\Theta} \\ \dot{\Phi} \end{pmatrix} = \mathbf{F}_0(\Theta, \Phi) + \begin{pmatrix} B_x(t) & B_y(t) & B_z(t) \end{pmatrix} \begin{pmatrix} \mathbf{F}_1(\Theta, \Phi) \\ \mathbf{F}_2(\Theta, \Phi) \\ \mathbf{F}_3(\Theta, \Phi) \end{pmatrix}, \quad (9)$$

where the vector fields F_0, \dots, F_3 are functions of the columns of $(M^h)^{-1}$ and of the magnetic and elastic constants.

C. Parameter Identification

The hydrodynamic parameters (RFT coefficients) and the elasticity coefficient of the model are identified by non-linear fitting to match the observed velocity-frequency response curve of the experimental swimmer under sinusoidal actuation. Three links were used for the approximation of the tail. Figure 3 shows the agreement between the experimental and simulated frequency

responses. The fitted parameter values are given in the appendix I.

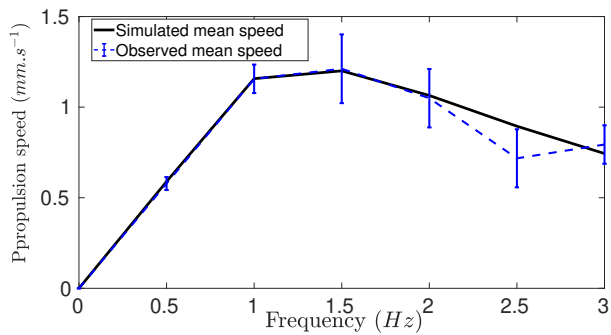


FIG. 3. Experimental ($N = 6$) and simulated horizontal swimming velocities for the frequency range $f = (0 \cdots 3\text{Hz})$.

It is worth noting that using a finer discretization (more than 3) of the tail only marginally improves the fitting error while adding to the computational cost of the magnetic field optimization, as it is shown in figure 9 of the appendix.

IV. MAGNETIC FIELD OPTIMIZATION

In what follows we focus on finding the time-varying magnetic field that maximizes the mean horizontal propulsion speed of the swimmer under the constraint of a periodic deformation. The admissible controls are of the form $(B_x, B_y(t), B_z(t))$, where the static orientating field B_x is fixed and the two dimensional time-varying actuating field $(B_y(t), B_z(t))$ is optimized. The bounds on the orientating field and the time-varying fields are taken to be the same as the sinusoidal field used in the experiments ($B_x = 2.5\text{mT}$ and $\|(B_y(t), B_z(t))\| < 10\text{mT}$). The deformation period is chosen to be the same as the observed optimal period for a sinusoidal actuation and it is imposed that the swimmer returns in its initial orientation and position on the y and z -axis at the end of the period. This optimal control problem is numerically solved with the direct solver ICLOCS [28]. Figure 4 shows the result of the numerical optimization, where we can see the y (a) and z (b) components of the optimal magnetic field. Interestingly enough, this results in a simple magnetic field shape, shown in (c), where the actuating strategy over one deformation period is a partial rotation (about two thirds of a circle) of the magnetic field followed by a full rotation in the opposite direction. Repeating this pattern over time makes the swimmer revolve around the x axis, drawing a "figure-8" in the $y-z$ plane. Figure 5 shows the simulated optimal trajectory of the swimmer compared to the trajectory under the sinusoidal field. The simulated fields perform better (mean

propulsion speed of $1.45 \cdot 10^{-3} \text{ms}^{-1}$) than the sinusoidal actuation (mean propulsion speed of $1.2 \cdot 10^{-3} \text{ms}^{-1}$).

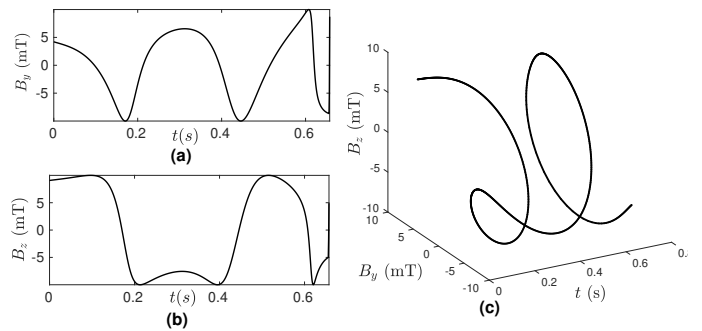


FIG. 4. Actuating magnetic field that maximizes the horizontal speed of the swimmer. (a) and (b) are respectively the y and z components of the magnetic field. (c) : Shape of the actuating *optimal* magnetic field deriving from the optimization process during one period.

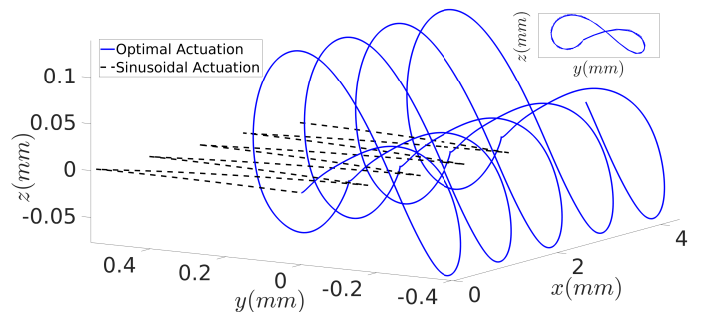


FIG. 5. Simulated trajectory of the head of the swimmer under both the optimal and sinusoidal field for 3 seconds of straight swimming under both actuation patterns. In the corner, the trajectory in the $y-z$ plane.

V. EXPERIMENTAL RESULTS

The numerical solution of the optimal control problem (Figure 4) is interpolated by its truncated Fourier expansion (first 10 modes) and then implemented in the magnetic generation system to actuate the swimmer. As predicted by the simulations, the optimal field out-performs the sinusoidal field in terms of horizontal propulsion speed, as shown in Figure 6. Figure 7 shows the 3D trajectory of the experimental swimmer during one period. Figure 8 shows the deformation pattern undergone by the swimmer in the two perpendicular planes. Under optimal actuation, the swimmer reaches a mean horizontal propulsion speed of $1.54 \pm 0.3 \cdot 10^{-3} \text{ms}^{-1}$ ($N = 6$). The mean relative error (∞ -norm) between the simulated and observed x -displacement is $0.16(\pm 0.02)$.

We refer the reader to the supplemental movies [32] for a side-by-side comparison of the displacements of the swimmer actuated by the optimal and sinusoidal field.

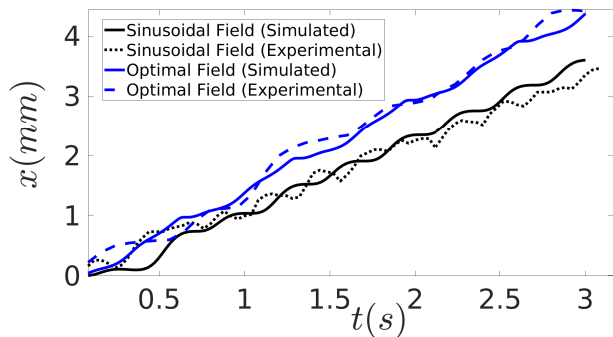


FIG. 6. Simulated and experimental horizontal displacements of the swimmer actuated by the optimal magnetic field and the sinusoidal magnetic field for 3 seconds of straight swimming under both actuation patterns.

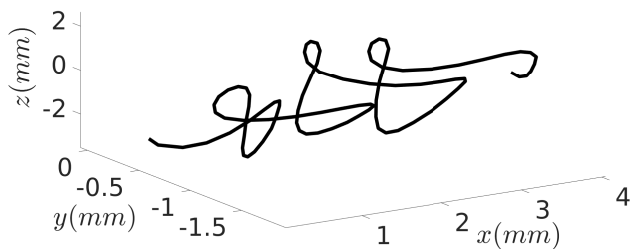


FIG. 7. Trajectory of the experimental swimmer actuated by the optimal magnetic field given in Figure 4 during three periods of the magnetic field.

VI. DISCUSSION

The optimization process exploits two time varying components of the field in order to maximize the horizontal speed of the swimmer, which allows the swimmer to perform a 3D trajectory. This swimming strategy shows the necessity of allowing flagellar swimmers to go out-of-plane in order to swim at a maximal propulsion speed, as illustrated in Figure 5 and Figure 7. The effectiveness of non-planar actuation has been corroborated in the literature by studies where non-planar helical waves have been shown to induce a faster propulsion speed for flagellar swimmers. For example, in [33], the sperm-like swimmer's swimming speed increases between 1.2 and 2 times (depending on the viscosity of the fluid) when switching between a planar swimming induced by sinusoidal actuation and helical swimming induced by a conical mag-

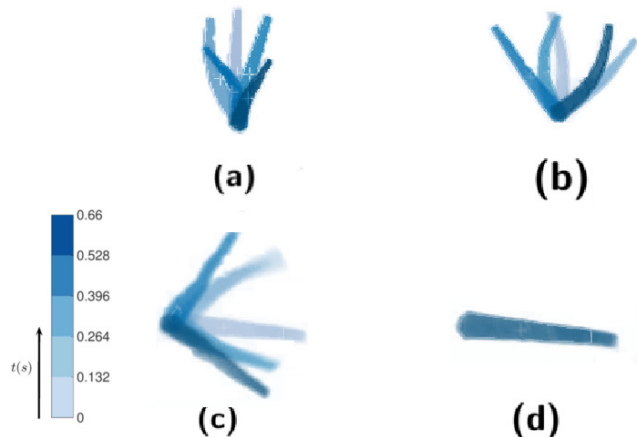


FIG. 8. Deformation pattern of the experimental swimmer actuated by the optimal magnetic field and the sinusoidal magnetic field over one period in two planes. (**(a)** : Optimal field, top view, **(b)** : Sinusoidal field, top view, **(c)** : Optimal field, side view, **(d)** : Sinusoidal field, side view.). The snapshots of the experimental swimmer are taken at equal time steps over a period of the actuating fields. We observe (as expected) no deformation in the side plane for the sinusoidal field.

netic field. This characteristic is also shown in [34] for self propelled swimmers. However, our work differs from these approaches as it does not rely on an a priori prescribed actuation pattern or shape deformation but optimizes the 3D driving magnetic field of the swimmer which allows the generation of swimmer-specific optimal actuation. From figure 6, we see that the dynamic model accurately predicts the horizontal displacements of the swimmer under both magnetic fields. It is less accurate in predicting the value of the amplitudes of the oscillations of the swimmer along the y and z axis as can be seen from comparing figures 7 and 5. However, the shapes of the predicted and experimental trajectories match qualitatively. The swimmer's displacements are characterized by the deformations of its tail, as a consequence of the forces and torques balances in equation 5. The experimental deformation patterns of the tail under both magnetic fields are shown in Figure 8, which illustrates how the swimmer breaks the time-reversible symmetry of the Stokes flow to propel in both cases. In particular, the deformation pattern under the optimal field shows a torsion of the tail of the swimmer in addition to a beating pattern. This torsion of the tail causes the swimmer to go out-of-plane. This same effect of the torsion on the trajectory has been shown in the case of flagellated cells that self propel along a 3D chiral path when the torsion of the flagellum is coupled with an oscillating waveform [35].

Although the main focus of this work was to optimize the speed of the flexible robot for swimming along a straight line, this swimming strategy is easily implementable for open loop or closed loop path following (see

[21] for an example) by applying the static component of the magnetic field in the direction tangent to the curve, and the time-varying components in the normal and binormal directions.

VII. CONCLUSION

We have investigated the design of optimal actuation patterns for a flexible low Reynolds number swimmer actuated by magnetic fields using a simple computationally inexpensive model that predicts the horizontal displacement of the swimmer. This provides an automated procedure for the optimal control design of flexible magnetic low-Reynolds swimmers. Using this approach, we simulate magnetic fields that maximize the horizontal propulsion speed of the swimmer. From this, we are able to propose a novel magnetic actuation pattern that allows the swimmer to swim significantly faster compared to the usual sinusoidal actuation. This actuation pattern is experimentally validated on a flexible low Reynolds swimmer. The dynamic model used accurately predicts the horizontal displacement of the experimental swimmer under both the optimal and sinusoidal actuation. The simulation and experimental results show that it is necessary to go out-of plane in order to maximize the propulsion speed of flexible magnetic low-Reynolds swimmers. Although the dynamic model used is limited in its accuracy, since it is based on an approximation of the fluid-structure interaction of the swimmer, this study showcases the usefulness of such a simplified model for computationally-inexpensive control design for the actuation of flagellar magnetic swimmers. Current research is focused on finding a solution to allow propulsion of flagellated swimmers in confined environments ([36, 37]) or in the presence of obstacles, such as the human vasculature ([15]). For this purpose, the technique presented in this paper could be generalized to find magnetic fields that allows the propulsion of the robot in a confined environment by adapting the model.

ACKNOWLEDGMENTS

The authors were partially funded by the CNRS through the project Défi InFiniti-AAP 2018-2019.

Appendix A: Formulation of the hydrodynamics of the swimmer.

1. Parametrization of the rotation matrices and angular velocities.

The rotation matrix R_{head} represents the coordinates transform between the world frame and \mathcal{R}_{head} . It is parametrized by three angles $(\theta_x, \theta_y, \theta_z)$ resulting from a $Z - Y - X$ rotation sequence :

$$R_{head} = R_x(\theta_x)R_y(\theta_y)R_z(\theta_z), \quad (A1)$$

where R_x , R_y , and R_z are the elementary rotation matrices around the x, y , and z axes.

Similarly, for each link i , the rotation matrix R_i represents the coordinates transform between the head's frame \mathcal{R}_{head} and the frame associated with link i \mathcal{R}_i . It is parametrized by two angles (ϕ_y^i, ϕ_z^i) resulting from a $Z - Y$ rotation sequence :

$$R_i = R_{head}\tilde{R}_iR_{head}^T \text{ for } i \in (1, \dots, N). \quad (A2)$$

where $\tilde{R}_i = R_y(\phi_y^i)R_z(\phi_z^i)$.

For all skew-symmetric matrix $A \in \mathbb{R}^{3 \times 3}$, we can define a vector Ω verifying :

$$\forall \mathbf{V} \in \mathbb{R}^3 \quad A\mathbf{V} = \Omega \times \mathbf{V}. \quad (A3)$$

Using this property, we define the following angular velocity vectors :

- Ω_{head} is the vector defining the cross product associated with the skew-symmetric matrix $\dot{R}_{head}R_{head}^T$. Ω_{head} depends linearly on $(\dot{\theta}_x, \dot{\theta}_y, \dot{\theta}_z)$ as follows :

$$\Omega_{head} = L_{head} \begin{pmatrix} \dot{\theta}_x \\ \dot{\theta}_y \\ \dot{\theta}_z \end{pmatrix}, \quad (A4)$$

where

$$L_{head} = \begin{pmatrix} 1 & 0 & \sin(\theta_y) \\ 0 & \cos(\theta_x) & -\cos(\theta_y)\sin(\theta_x) \\ 0 & \sin(\theta_x) & \cos(\theta_x)\cos(\theta_y) \end{pmatrix} \begin{pmatrix} \dot{\theta}_x \\ \dot{\theta}_y \\ \dot{\theta}_z \end{pmatrix} \quad (A5)$$

- Ω_i is the vector defining the cross product associated with the skew-symmetric matrix $\dot{R}_i\tilde{R}_i^T$ for $i \in (1 \dots N)$. Ω_i depends linearly on $(\dot{\phi}_y^i, \dot{\phi}_z^i)$ as follows :

$$\Omega_i = L_i \begin{pmatrix} \dot{\phi}_x^i \\ \dot{\phi}_y^i \\ \dot{\phi}_z^i \end{pmatrix}, \quad (A6)$$

where

$$L_i = \begin{pmatrix} \sin(\phi_y^i) & 0 \\ \cos(\phi_y^i) & 0 \\ 0 & 1 \end{pmatrix} \begin{pmatrix} \phi_x^i \\ \phi_y^i \\ \phi_z^i \end{pmatrix}. \quad (\text{A7})$$

2. Hydrodynamical force and torque on the head of the swimmer

We consider a drag force acting on the head of the swimmer that is proportional to its velocity in each direction of the head frame's $\mathcal{R}_{\text{head}}$ and a resistive torque proportional to the angular velocity of the head :

$$\begin{aligned} \mathbf{F}_{\text{head}}^h &= -R_{\text{head}} \begin{pmatrix} k_{H,\parallel} & 0 & 0 \\ 0 & k_{H,\perp} & 0 \\ 0 & 0 & k_{H,\perp} \end{pmatrix} R_{\text{head}}^T \dot{\mathbf{X}}, \\ \mathbf{T}_{\text{head}}^h &= -k_R \boldsymbol{\Omega}_{\text{head}} = -k_R L_{\text{head}} \dot{\boldsymbol{\Phi}}, \end{aligned} \quad (\text{A8})$$

where $k_{H,\parallel}$ and $k_{H,\perp}$ are the parallel and perpendicular hydrodynamic coefficients of the head and k_R is a rotational drag coefficient.

3. Expression of the hydrodynamical force density on a point of the tail of the swimmer

For $i = (1 \cdots N)$, we consider a point $\mathbf{x}_i(s)$ on the i -th link of the tail parametrized by its arclength s such as

$$\mathbf{x}_i(s) = \mathbf{O}_i - s \mathbf{e}_x^i. \quad (\text{A9})$$

Using the rotation matrices defined in the previous paragraph, $\mathbf{x}_i(s)$ is written as :

$$\mathbf{x}_i(s) = \mathbf{O}_H - r R_{\text{head}} \mathbf{e}_x - l \sum_{k=1}^{i-1} R_{\text{head}} \tilde{R}_k \mathbf{e}_x - s R_{\text{head}} \tilde{R}_i \mathbf{e}_x, \quad (\text{A10})$$

where r is the distance between \mathbf{O}_H and \mathbf{O}_i . We differentiate the previous equation to obtain the expression of the velocity of $\mathbf{x}_i(s)$:

$$\begin{aligned} \dot{\mathbf{x}}_i(s) &= \dot{\mathbf{X}} - r \dot{R}_{\text{head}} \mathbf{e}_x - l \sum_{k=1}^{i-1} \dot{R}_{\text{head}} \tilde{R}_k \mathbf{e}_x \\ &\quad - l \sum_{k=1}^{i-1} R_{\text{head}} \dot{\tilde{R}}_k \mathbf{e}_x - s \dot{R}_{\text{head}} \tilde{R}_i \mathbf{e}_x - s R_{\text{head}} \dot{\tilde{R}}_i \mathbf{e}_x. \end{aligned} \quad (\text{A11})$$

Following Resistive Force Theory, the density of hydrodynamic force \mathbf{f}_i is linear with respect to the components of $\dot{\mathbf{x}}_i(s)$:

$$\begin{aligned} \mathbf{f}_i(s) &= -k_{\parallel} (\dot{\mathbf{x}}_i(s) \cdot \mathbf{e}_x^i) \mathbf{e}_x^i - k_{\perp} (\dot{\mathbf{x}}_i(s) \cdot \mathbf{e}_y^i) \mathbf{e}_y^i \\ &\quad - k_{\perp} (\dot{\mathbf{x}}_i(s) \cdot \mathbf{e}_z^i) \mathbf{e}_z^i \\ &= S_i \dot{\mathbf{x}}_i(s), \end{aligned} \quad (\text{A12})$$

where k_{\parallel} and k_{\perp} are respectively the parallel and perpendicular drag coefficients of the swimmer's tail and, for each link i :

$$S_i = (R_{\text{head}} \tilde{R}_i) D (R_{\text{head}} \tilde{R}_i)^T. \quad (\text{A13})$$

where

$$D = - \begin{pmatrix} k_{\parallel} & 0 & 0 \\ 0 & k_{\perp} & 0 \\ 0 & 0 & k_{\perp} \end{pmatrix} \quad (\text{A14})$$

Using the expression of $\dot{\mathbf{x}}_i(s)$ (equation (A11)) in equation (A12), the hydrodynamic force density reads:

$$\begin{aligned} \mathbf{f}_i(s) &= S_i \dot{\mathbf{X}} - r (R_{\text{head}} \tilde{R}_i D \tilde{R}_i^T) R_{\text{head}}^T \dot{R}_{\text{head}} \mathbf{e}_x \\ &\quad - l (R_{\text{head}} \tilde{R}_i D \tilde{R}_i^T) \sum_{k=1}^{i-1} R_{\text{head}}^T \dot{R}_{\text{head}} \tilde{R}_k \mathbf{e}_x \\ &\quad - l (R_{\text{head}} \tilde{R}_i D \tilde{R}_i^T) \sum_{k=1}^{i-1} \tilde{R}_k \tilde{R}_k^T \dot{\tilde{R}}_k \mathbf{e}_x \\ &\quad - s (R_{\text{head}} \tilde{R}_i D \tilde{R}_i^T) R_{\text{head}}^T \dot{R}_{\text{head}} \tilde{R}_i \mathbf{e}_x \\ &\quad - s (R_{\text{head}} \tilde{R}_i D \tilde{R}_i^T) \dot{\tilde{R}}_i \mathbf{e}_x. \end{aligned} \quad (\text{A15})$$

Using the definition of the angular velocity vectors (equations A4,A6) , we rewrite the expression above as :

$$\begin{aligned} \mathbf{f}_i(s) &= S_i \dot{\mathbf{X}} - r (R_{\text{head}} \tilde{R}_i D \tilde{R}_i^T) \boldsymbol{\Omega}_{\text{head}} \times \mathbf{e}_x \\ &\quad - l (R_{\text{head}} \tilde{R}_i D \tilde{R}_i^T) \sum_{k=1}^{i-1} \boldsymbol{\Omega}_{\text{head}} \times (\tilde{R}_k \mathbf{e}_x) \\ &\quad - l (R_{\text{head}} \tilde{R}_i D \tilde{R}_i^T) \sum_{k=1}^{i-1} \tilde{R}_k \boldsymbol{\Omega}_k \times \mathbf{e}_x \\ &\quad - s (R_{\text{head}} \tilde{R}_i D \tilde{R}_i^T) \boldsymbol{\Omega}_{\text{head}} \times (\tilde{R}_i \mathbf{e}_x) \\ &\quad - s (R_{\text{head}} \tilde{R}_i D) \boldsymbol{\Omega}_i \times \mathbf{e}_x. \end{aligned} \quad (\text{A16})$$

In order to write cross products in matricial form, we introduce the following notation :

$$\forall \mathbf{V} = (V_1 \ V_2 \ V_3)^T \in \mathbb{R}^3 \quad [V]^\times = \begin{pmatrix} 0 & -V_3 & V_2 \\ V_3 & 0 & -V_1 \\ -V_2 & V_1 & 0 \end{pmatrix}. \quad (\text{A17})$$

Using this notation and the linear dependency of $\boldsymbol{\Omega}_{\text{head}}$ and $\boldsymbol{\Omega}_i$ on the angular velocities (equations A4 and A6), the hydrodynamical drag force density on link i is written as a linear function of $\dot{\mathbf{X}}$, $\dot{\boldsymbol{\Omega}}$, and $\dot{\boldsymbol{\Phi}}$:

$$\mathbf{f}_i(s) = A^i(s) \begin{pmatrix} \dot{\mathbf{X}} \\ \dot{\boldsymbol{\Omega}} \\ \dot{\boldsymbol{\Phi}} \end{pmatrix}, \quad (\text{A18})$$

where $A^i(s) \in \mathbb{R}^{3,2N+6}$ is defined block-wise as :

$$A^i(s) = \begin{pmatrix} A_{\mathbf{X}}^i \in \mathbb{R}^{3 \times 3} \\ A_{\boldsymbol{\theta}}^i \in \mathbb{R}^{3 \times 3} \\ A_1^i \in \mathbb{R}^{2 \times 3} \\ \vdots \\ A_N^i \in \mathbb{R}^{2 \times 3} \end{pmatrix}, \quad (\text{A19})$$

where

$$\left\{ \begin{array}{l} A_{\mathbf{X}}^i(s) = S_i, \\ A_{\boldsymbol{\theta}}^i(s) = (R_{head} \tilde{R}_i D \tilde{R}_i^T) [r \mathbf{e}_x + l \sum_{k=1}^{i-1} \tilde{R}_k \mathbf{e}_x]^\times L_{head} \\ \quad + (R_{head} \tilde{R}_i D \tilde{R}_i^T) [s \tilde{R}_i \mathbf{e}_x]^\times L_{head}, \\ A_1^i(s) = l (R_{head} \tilde{R}_i D \tilde{R}_i^T) \tilde{R}_1 [\mathbf{e}_x]^\times L_1, \\ \quad \vdots \\ A_{i-1}^i(s) = l (R_{head} \tilde{R}_i D \tilde{R}_i^T) \tilde{R}_{i-1} [\mathbf{e}_x]^\times L_{i-1}, \\ A_i^i(s) = s (R_{head} \tilde{R}_i D) [\mathbf{e}_x]^\times L_i, \\ A_j^i = 0_3 \quad \forall j > i. \end{array} \right. \quad (\text{A20})$$

4. Hydrodynamical forces and torques on each link

We define the two $3 \times 2N + 6$ matrices B^i and C^i as follows :

$$\left\{ \begin{array}{l} B^i = \int_0^l A^i(s) ds, \\ C^i = \int_0^l s A^i(s) ds. \end{array} \right. \quad (\text{A21})$$

Using this notation, the hydrodynamical force on link i depends linearly on the position and shape velocities as follows :

$$\mathbf{F}_i^h = B^i \begin{pmatrix} \dot{\mathbf{X}} \\ \dot{\boldsymbol{\Theta}} \\ \dot{\boldsymbol{\Phi}} \end{pmatrix}. \quad (\text{A22})$$

The hydrodynamic torque on link i calculated about the point O_H is computed from the hydrodynamical force density as follows :

$$\mathbf{T}_{i,H}^h = \int_0^l (\mathbf{x}_i(s) - \mathbf{O}_H) \times \mathbf{f}_i(s) ds. \quad (\text{A23})$$

We rewrite $(\mathbf{x}_i(s) - \mathbf{O}_H)$ as :

$$\begin{aligned} (\mathbf{x}_i(s) - \mathbf{O}_H) &= -r R_{head} \mathbf{e}_x - \sum_{k=1}^{i-1} l R_{head} \tilde{R}_k \mathbf{e}_x \\ &\quad - s R_{head} \tilde{R}_i \mathbf{e}_x. \end{aligned} \quad (\text{A24})$$

$\mathbf{T}_{i,H}^h$ is then expressed as :

$$\begin{aligned} \mathbf{T}_{i,H}^h &= - [r R_{head} \mathbf{e}_x + \sum_{k=1}^{i-1} l R_{head} \tilde{R}_k \mathbf{e}_x]^\times \int_0^l \mathbf{f}_i(s) ds \\ &\quad - [R_{head} \tilde{R}_i]^\times \int_0^l s \mathbf{f}_i(s) ds. \end{aligned} \quad (\text{A25})$$

Thus, the matricial form of $\mathbf{T}_{i,H}^h$ is :

$$\begin{aligned} \mathbf{T}_{i,H}^h &= - ([r R_{head} \mathbf{e}_x + \sum_{k=1}^{i-1} l R_{head} \tilde{R}_k \mathbf{e}_x]^\times B^i) \begin{pmatrix} \dot{\mathbf{X}} \\ \dot{\boldsymbol{\Theta}} \\ \dot{\boldsymbol{\Phi}} \end{pmatrix} \\ &\quad - ([R_{head} \tilde{R}_i]^\times C^i) \begin{pmatrix} \dot{\mathbf{X}} \\ \dot{\boldsymbol{\Theta}} \\ \dot{\boldsymbol{\Phi}} \end{pmatrix} \end{aligned} \quad (\text{A26})$$

Similarly, for $k = (i, \dots, N)$, the hydrodynamic torque on link i about O_k reads :

$$\mathbf{T}_{i,j}^h = - \left(\sum_{k=j}^{i-1} [l R_{head} \tilde{R}_k \mathbf{e}_x]^\times B^i - [R_{head} \tilde{R}_i]^\times C^i \right) \begin{pmatrix} \dot{\mathbf{X}} \\ \dot{\boldsymbol{\Theta}} \\ \dot{\boldsymbol{\Phi}} \end{pmatrix}. \quad (\text{A27})$$

5. Equations of motion

Using the expressions of the hydrodynamical forces and torques in the previous section (equations A22, A26, and A27), the left-hand side of the dynamical system (7) is written as a linear function of the state derivatives :

$$\begin{pmatrix} \sum_{i=1}^N \mathbf{F}_i^h + \mathbf{F}_{head}^h \\ \mathbf{T}_{head}^h + \sum_{i=1}^N \mathbf{T}_{i,H}^h \\ (\sum_{i=1}^N \mathbf{T}_{i,H}^h) \cdot \mathbf{e}_y^1 \\ (\sum_{i=1}^N \mathbf{T}_{i,H}^h) \cdot \mathbf{e}_z^1 \\ \vdots \\ \sum_{i=k}^N \mathbf{T}_{i,k}^h \cdot \mathbf{e}_y^k \\ \sum_{i=k}^N \mathbf{T}_{i,k}^h \cdot \mathbf{e}_z^k \\ \vdots \\ \mathbf{T}_{N,N}^h \cdot \mathbf{e}_y^N \\ \mathbf{T}_{N,N}^h \cdot \mathbf{e}_z^N \end{pmatrix} = M^h(\boldsymbol{\Theta}, \boldsymbol{\Phi}) \begin{pmatrix} \dot{\mathbf{X}} \\ \dot{\boldsymbol{\Theta}} \\ \dot{\boldsymbol{\Phi}} \end{pmatrix}, \quad (\text{A28})$$

where $M^h \in \mathbb{R}^{2N+6 \times 2N+6}$ is defined by blocks as :

$$\begin{aligned} M^h &= M^{\mathbf{X}} \in \mathbb{R}^{3 \times 2N+6} \\ &\quad M^{\boldsymbol{\Theta}} \in \mathbb{R}^{3 \times 2N+6} \\ &\quad M^1 \in \mathbb{R}^{2 \times 2N+6} \\ &\quad \vdots \\ &\quad M^N \in \mathbb{R}^{2 \times 2N+6} \end{aligned}$$

, (A29)

where

$$\left\{ \begin{array}{l}
M^{\mathbf{X}} = - (R_{head} D_H R_{head}^T \ 0_3 \ O_{3,2 \times N}) + \sum_{i=1}^N B^i \\
M^{\Theta} = - k_R (0_3 \ L_{head} \ O_{3,3 \times N}) \\
\quad - \sum_{i=1}^N [R_{head} (r \mathbf{e}_x + \sum_{k=1}^{i-1} l \tilde{R}_k \mathbf{e}_x)]^\times B^i \\
\quad - \sum_{i=1}^N [R_{head} \tilde{R}_i]^\times C^i \\
M^1 = - R_1^* \sum_{i=1}^N (\sum_{k=1}^{i-1} [l R_{head} \tilde{R}_k \mathbf{e}_x]^\times B^i) \\
\quad - R_1^* \sum_{i=1}^N [R_{head} \tilde{R}_i]^\times C^i \\
\quad \vdots \\
M^N = - R_N^* \sum_{k=1}^{N-1} ([l R_{head} \tilde{R}_k \mathbf{e}_x]^\times B^N) \\
\quad - R_N^* [R_{head} \tilde{R}_N]^\times C^N,
\end{array} \right. \quad (\text{A30})$$

where R_i^* is the 2×3 matrix consisting of the second and third line of the matrix $(R_{head} \tilde{R}_i)^T$ which represents the projection on the plane $(\mathbf{e}_y^i, \mathbf{e}_z^i)$.

Appendix B: Simulation Parameters

Parameter	value
Length of the tail	$L = 7mm$
Radius of the head	$r = 0.3mm$
Parallel resistive coefficient, head	$k_{H,\parallel} = 1.15 Nsm^{-1}$
Perpendicular resistive coefficient, head	$k_{H,\perp} = 4.37 Nsm^{-1}$
Rotational resistive coefficient, head	$k_{H,R} = 0.6 Nms$
Parallel resistive coefficient, tail	$k_{T,\parallel} = 0.35 Nsm^{-1}$
Perpendicular resistive coefficient, tail	$k_{T,\perp} = 0.813 Nsm^{-1}$
Elastic coefficient	$k_{el} = 8.67810^{-7} N.m^{-1}$
Magnetization	$M = 1.68510^{-4} A.m^{-1}$

TABLE I. Parameters used for the sperm cell simulations

Appendix C: Fitting error and number of links

Figure 9 shows the result of the parameter fitting (relative l^2 -norm) between the experimental velocity-frequency response curve and the simulated velocity-frequency response curve. As seen in the figure, the model fails to accurately match the experimental velocity-frequency curve with $N = 1$ and $N = 2$ links. The fitting results in a small error for $N \geq 3$.

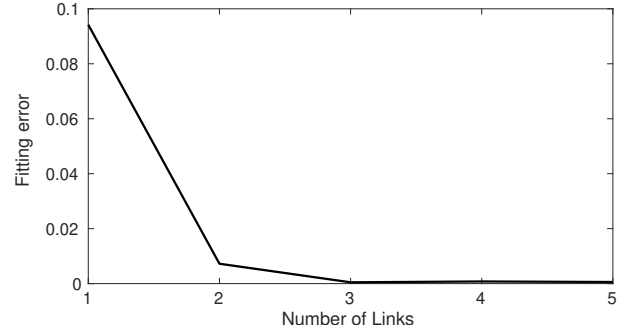


FIG. 9. Fitting error in function of the number of links of the model.

- [1] Bradley J Nelson, Ioannis K Kaliakatsos, and Jake J Abbott. Microrobots for minimally invasive medicine. *Annual review of biomedical engineering*, 12:55–85, 2010.
- [2] Metin Sitti, Hakan Ceylan, Wenqi Hu, Joshua Giltinan, Mehmet Turan, Sehyuk Yim, and Eric D Diller. Biomedical applications of untethered mobile milli/microrobots. *Proceedings of the IEEE*, 103(2):205–224, 2015.
- [3] Famin Qiu, Satoshi Fujita, Rami Mhanna, Li Zhang, Benjamin R Simona, and Bradley J Nelson. Magnetic helical microswimmers functionalized with lipoplexes for targeted gene delivery. *Advanced Functional Materials*, 25(11):1666–1671, 2015.
- [4] Debabrata Patra, Samudra Sengupta, Wentao Duan, Hua Zhang, Ryan Pavlick, and Ayusman Sen. Intelligent, self-powered, drug delivery systems. *Nanoscale*, 5(4):1273–1283, 2013.
- [5] Michael J Mack. Minimally invasive and robotic surgery. *Jama*, 285(5):568–572, 2001.
- [6] Stefano Fusco, Mahmut Selman Sakar, Stephen Kennedy, Christian Peters, Rocco Bottani, Fabian Starsich, Angelo Mao, Georgios A Sotiriou, Salvador Pané, Sotiris E Pratsinis, et al. An integrated microrobotic platform for on-demand, targeted therapeutic interventions. *Advanced Materials*, 26(6):952–957, 2014.
- [7] Wei Gao, Daniel Kagan, On Shun Pak, Corbin Clawson, Susana Campuzano, Erdembileg Chuluun-Erdene, Erik Shipton, Eric E. Fullerton, Liangfang Zhang, Eric Lauga, and Joseph Wang. Cargo-towing fuel-free magnetic nanoswimmers for targeted drug delivery. *Small*, 8(3):460–467, 2012.
- [8] Eric Lauga and Thomas R Powers. The hydrodynamics of swimming microorganisms. *Reports on Progress in*

- Physics*, 72(9):096601, 2009.
- [9] Tian Qiu, Tung-Chun Lee, Andrew G. Mark, Konstantin I. Morozov, Raphael Münster, Otto Mierka, Stefan Turek, Alexander M. Leshansky, and Peer Fischer. Swimming by reciprocal motion at low reynolds number. *Nature Communications*, 5, 11 2014.
- [10] A.F. Tabak and S. Yesilyurt. Computationally-validated surrogate models for optimal geometric design of bio-inspired swimming robots: Helical swimmers. *Computers and Fluids*, 99:190–198, 2014.
- [11] Antoine Barbot, Dominique Decanini, and Gilgueng Hwang. The rotation of microrobot simplifies 3d control inside microchannels. *Scientific Reports*, 8(1):438, 2018.
- [12] Famin Qiu, Satoshi Fujita, Rami Mhanna, Li Zhang, Benjamin R. Simona, and Bradley J. Nelson. Magnetic helical microswimmers functionalized with lipoplexes for targeted gene delivery. *Advanced Functional Materials*, 25(11):1666–1671, 2015.
- [13] Rémi Dreyfus, Jean Baudry, Marcus L Roper, Marc Fermigier, Howard A Stone, and Jérôme Bibette. Microscopic artificial swimmers. *Nature*, 437(7060):862, 2005.
- [14] Islam SM Khalil, Herman C Dijkslag, Leon Abelmann, and Sarthak Misra. Magnetosperm: A microrobot that navigates using weak magnetic fields. *Applied Physics Letters*, 104:223701, 2014.
- [15] Bumjin Jang, Amanda Aho, Bradley J Nelson, and Salvador Pane. Fabrication and locomotion of flexible nanoswimmers. *IEEE/RSJ International Conference on Intelligent robots and systems (IROS)*, IEEE, Madrid 2018.
- [16] Sangwon Kim, Seungmin Lee, Jeonghun Lee, Bradley J Nelson, Li Zhang, and Hongsoo Choi. Fabrication and manipulation of ciliary microrobots with non-reciprocal magnetic actuation. *Scientific reports*, 6:30713, 2016.
- [17] Xing Ma, Seungwook Jang, Mihail N. Popescuand, William E. Uspal, Albert Miguel-López, Kersten Hahn, Dong-Pyo Kim, and Samuel Sánchez. Reversed janus micro/nanomotors with internal chemical engine. *ACS Publications*, 10(9):8751–8759, 2016.
- [18] Bumjin Jang, Ayoung Hong, Ha Eun Kang, Carlos Alcantara, Samuel Charreyron, Fajer Mushtaq, Eva Pellicer, Robert Büchel, Jordi Sort, Sung Sik Lee, et al. Multiwavelength light-responsive au/b-tio2 janus micromotors. *ACS nano*, 11:6146–6154, 2017.
- [19] Daniel Ahmed, Thierry Baasch, Bumjin Jang, Salvador Pane, Jürg Dual, and Bradley J. Nelson. Artificial swimmers propelled by acoustically activated flagella. *Nano Letters*, 16:4968–4974, 2016.
- [20] Tiantian Xu, Jiangfan Yu, Xiaohui Yan, Hongsoo Choi, and Li Zhang. Magnetic actuation based motion control for microrobots: An overview. *Micromachines*, 6(9):1346–1364, 2015.
- [21] Ali Oulmas, Nicolas Andreff, and Stéphane Régnier. 3d closed-loop motion control of swimmer with flexible flagella at low reynolds numbers. In *Intelligent Robots and Systems (IROS), 2017 IEEE/RSJ International Conference on*, pages 1877–1882. IEEE, 2017.
- [22] Jake J Abbott, Kathrin E Peyer, Marco Cosentino Lagomarsino, Li Zhang, Lixin Dong, Ioannis K Kaliakatsos, and Bradley J Nelson. How should microrobots swim? *The international journal of Robotics Research*, 28(11-12):1434–1447, 2009.
- [23] J. Gray and G. J. Hancock. The propulsion of sea-urchin spermatozoa. *Journal of Experimental Biology*, 32(4):802–814, 1955.
- [24] BM Friedrich, IH Riedel-Kruse, J Howard, and F Jülicher. High-precision tracking of sperm swimming fine structure provides strong test of resistive force theory. *Journal of Experimental Biology*, 213(8):1226–1234, 2010.
- [25] Clement Moreau, Laetitia Giraldi, and Hermes Augusto Buarque Gadelha. The asymptotic coarse-graining formulation of slender-rods, bio-filaments and flagella. *Journal of the Royal Society Interface*, 15:20180235, 2018.
- [26] F Alouges, Antonio DeSimone, L Giraldi, and M Zoppello. Self-propulsion of slender micro-swimmers by curvature control: N-link swimmers. *International Journal of Non-Linear Mechanics*, 56:132–141, 2013.
- [27] François Alouges, Antonio DeSimone, Laetitia Giraldi, and Marta Zoppello. Can magnetic multilayers propel artificial microswimmers mimicking sperm cells? *Soft Robotics*, 2(3):117–128, 2015.
- [28] Paola Falugi, EC Kerrigan, and EV Wyk. Imperial college london optimal control software (iclocs). *Online: <http://www.ee.ic.ac.uk/ICLOCS>*, 2010.
- [29] E. Marchand, F. Spindler, and F. Chaumette. Visp for visual servoing: a generic software platform with a wide class of robot control skills. *IEEE Robotics and Automation Magazine*, 12(4):40–52, December 2005.
- [30] Tiantian Xu. *Propulsion characteristics and visual servo control of scaled-up helical microswimmers*. PhD thesis, Université Pierre et Marie Curie-Paris VI, 2014.
- [31] George T. Yates. How microorganisms move through water: The hydrodynamics of ciliary and flagellar propulsion reveal how microorganisms overcome the extreme effect of the viscosity of water. *American Scientist*, 74(4):358–365, 1986.
- [32] See supplemental material at [url] for the movies showing the trajectory of the swimmer under both fields.
- [33] Islam SM Khalil, Ahmet Fatih Tabak, Mohamed Abou Seif, Anke Klingner, and Metin Sitti. Controllable switching between planar and helical flagellar swimming of a soft robotic sperm. *PLoS one*, 13(11):e0206456, 2018.
- [34] AT Chwang and Th Y Wu. A note on the helical movement of micro-organisms. *Proceedings of the Royal Society of London. Series B. Biological Sciences*, 178(1052):327–346, 1971.
- [35] Jan F Jikeli, Luis Alvarez, Benjamin M Friedrich, Laurence G Wilson, René Pascal, Remy Colin, Magdalena Pichlo, Andreas Rennhack, Christoph Brenker, and U Benjamin Kaupp. Sperm navigation along helical paths in 3d chemoattractant landscapes. *Nature communications*, 6:7985, 2015.
- [36] Kenta Ishimoto and Eamonn A. Gaffney. A study of spermatozoan swimming stability near a surface. *Journal of Theoretical Biology*, 360:187 – 199, 2014.
- [37] Henry Shum and Eamonn A. Gaffney. Hydrodynamic analysis of flagellated bacteria swimming in corners of rectangular channels. *Phys. Rev. E*, 92, 2015.