



HAL
open science

High-Dimensional Control Using Generalized Auxiliary Tasks

Yannis Flet-Berliac, Philippe Preux

► **To cite this version:**

Yannis Flet-Berliac, Philippe Preux. High-Dimensional Control Using Generalized Auxiliary Tasks. 2019. hal-02295705v1

HAL Id: hal-02295705

<https://inria.hal.science/hal-02295705v1>

Preprint submitted on 24 Sep 2019 (v1), last revised 29 Nov 2019 (v3)

HAL is a multi-disciplinary open access archive for the deposit and dissemination of scientific research documents, whether they are published or not. The documents may come from teaching and research institutions in France or abroad, or from public or private research centers.

L'archive ouverte pluridisciplinaire **HAL**, est destinée au dépôt et à la diffusion de documents scientifiques de niveau recherche, publiés ou non, émanant des établissements d'enseignement et de recherche français ou étrangers, des laboratoires publics ou privés.

High-Dimensional Control Using Generalized Auxiliary Tasks

Yannis Flet-Berliac

Univ. Lille, SequeL Inria,
UMR 9189 - CRIStAL, CNRS
yannis.flet-berliac@inria.fr

Philippe Preux

Univ. Lille, SequeL Inria,
UMR 9189 - CRIStAL, CNRS
philippe.preux@inria.fr

Abstract

A long-standing challenge in reinforcement learning is the design of function approximations and efficient learning algorithms that provide agents with fast training, robust learning, and high performance in complex environments. To this end, the use of prior knowledge, while promising, is often costly and, in essence, challenging to scale up. In contrast, we consider problem knowledge signals, that are any relevant indicator useful to solve a task, e.g., metrics of uncertainty or proactive prediction of future states. Our framework consists of predicting such complementary quantities associated with self-performance assessment and accurate expectations. Therefore, policy and value functions are no longer only optimized for a reward but are learned using environment-agnostic quantities. We propose a generally applicable framework for structuring reinforcement learning by injecting problem knowledge in policy gradient updates. In this paper: (a) We introduce MERL, our multi-head reinforcement learning framework for generalized auxiliary tasks. (b) We conduct experiments across a variety of standard benchmark environments. Our results show that MERL improves performance for on- and off-policy methods. (c) We show that MERL also improves transfer learning on a set of challenging tasks. (d) We investigate how our approach addresses the problem of reward sparsity and pushes the function approximations into a better-constrained parameter configuration.

Introduction

Learning to control agents in simulated environments has been a source of many research efforts for decades (Nguyen and Widrow 1990; Werbos 1989; Schmidhuber and Huber 1991; Robinson and Fallside 1989) and this approach is still at the forefront of recent works in deep reinforcement learning (DRL) (Burda et al. 2019; Ha and Schmidhuber 2018; Silver et al. 2016; Espeholt et al. 2018). But current algorithms tend to be fragile and opaque (Iyer et al. 2018). Most of them require a large amount of training data collected from an agent interacting with a simulated environment, and where the reward signal is often critically sparse. Based on that, we make two observations.

First, previous work in reinforcement learning uses prior knowledge (Lin 1992; Clouse and Utgoff 1992; Moreno et al. 2004; Ribeiro 1998) as a means of reducing sample

inefficiency. While promising and undoubtedly necessary, the integration of such priors into current methods is potentially costly to implement. It may cause unwanted constraints and can hinder scaling up. Therefore, one goal of this paper is to integrate non-limiting constraints directly in the current RL methods, while being generally applicable to many tasks. Second, if the probability of receiving a reward by chance is arbitrarily low, the time required to learn from it will be arbitrarily long (Whitehead 1991). This barrier to learning will prevent agents from significantly reducing learning time. One way to overcome this barrier is to learn by getting alternative and complementary signals from different sources (Oudeyer and Kaplan 2007; Schmidhuber 1991).

Building upon existing auxiliary tasks methods, we develop the MERL framework that integrates complementary problem-oriented quantities into the learning process. In this framework, while the agent learns to maximize the returns by sampling an environment, it also learns to correctly evaluate its performance on the control problem by minimizing a MERL objective function augmented with several problem-focused quantities. One intuition the reader can have is that MERL transforms a reward-focused task into a task regularized with problem knowledge signals. In turns, agents can learn a richer representation of the environment and consequently better address the task at hand.

In the sequel of this paper, we first present the policy gradient methods used to demonstrate the performance of MERL. Then, we introduce the framework and detail on how it can be applied to most DRL method in any environment. We suggest some of the multi-head/problem knowledge quantities mentioned above, but the reader is further encouraged to introduce other relevant signals. We demonstrate that while being able to predict the quantities from the different MERL heads correctly, the agent outperforms the on- and off-policy baselines that do not use the MERL framework on various continuous control tasks. We also show that our framework allows to better transfer the learning from one task to others on several *Atari 2600* games.

Preliminaries

We consider a Markov Decision Process (MDP) defined on a state space \mathcal{S} , an action space \mathcal{A} and a reward function $r(s, a)$ where $s \in \mathcal{S}$, $a \in \mathcal{A}$. Let $\pi = \{\pi(a|s), s \in \mathcal{S}, a \in \mathcal{A}\}$ denote a stochastic policy and let the objective function be the traditional expected discounted reward:

$$J(\pi) \triangleq \mathbb{E}_{\tau \sim \pi} \left[\sum_{t=0}^{\infty} \gamma^t r(s_t, a_t) \right], \quad (1)$$

where $\gamma \in [0, 1)$ is a discount factor (Sutton and Barto 1998) and $\tau = (s_0, a_0, s_1, \dots)$ is a trajectory sampled from the environment.

Policy gradient methods aim at modelling and optimizing the policy directly (Sutton et al. 2000). The policy π_θ is generally modeled with a function parameterized by θ ; in the rest of the paper, π_θ and θ denote the same policy. In DRL, the policy is represented in a neural network called the policy network. Policy gradient methods can generally be cast into two groups: off-policy gradient methods, such as Deep Deterministic Policy Gradients (DDPG) (Lillicrap et al. 2015) and on-policy methods, such as Proximal Policy Optimization (PPO) (Schulman et al. 2017). These two methods are among the most commonly used and state-of-the-art policy gradient methods.

On- and Off-Policy Gradient Methods

On-Policy with Clipped Surrogate Objective PPO-Clip (Schulman et al. 2017) is an on-policy gradient-based algorithm. In previous work, PPO has been tested on a set of benchmark tasks and has proven to produce impressive results in many cases despite a relatively simple implementation. For instance, instead of imposing a hard constraint like TRPO (Schulman et al. 2015), PPO formalizes the constraint as a penalty in the objective function. In PPO, at each iteration, the new policy θ_{new} is obtained from the old policy θ_{old} :

$$\theta_{new} \leftarrow \operatorname{argmax}_{\theta} \mathbb{E}_{s, a \sim \pi_{\theta_{old}}} [L^{\text{PPO}}(s, a, \theta_{old}, \theta)]. \quad (2)$$

We use the clipped version of PPO whose objective function is:

$$L^{\text{PPO}}(s, a, \theta_{old}, \theta) = \min \left(\frac{\pi_\theta(a|s)}{\pi_{\theta_{old}}(a|s)} A^{\pi_{\theta_{old}}}(s, a), g(\epsilon, A^{\pi_{\theta_{old}}}(s, a)) \right), \quad (3)$$

where

$$g(\epsilon, A) = \begin{cases} (1 + \epsilon)A & A \geq 0 \\ (1 - \epsilon)A & A < 0. \end{cases} \quad (4)$$

By taking the minimum of the two terms in Eq. (3), the ratio $\frac{\pi_\theta(a|s)}{\pi_{\theta_{old}}(a|s)}$ is constrained to stay within a small interval around 1. The expected advantage function $A^{\pi_{\theta_{old}}}$ for the new policy is estimated by an old policy and then recalibrated using the probability ratio between the new and the old policy.

Off-Policy with Actor-Critic algorithm DDPG (Lillicrap et al. 2015) is a model-free off-policy actor-critic algorithm, combining Deterministic Policy Gradient (DPG) (Silver et al. 2014) with Deep Q-Network (DQN) (Mnih et al. 2013). While the original DQN works in discrete action space and stabilizes the learning of the Q-function with experience replay and a target network, DDPG extends it to continuous action space with the actor-critic framework while learning a deterministic policy.

Let P denote the distribution $P(\cdot|s, a)$ from which the next state s' is sampled. The Bellman equation describing the optimal action-value function $Q^*(s, a)$ is given by:

$$Q^*(s, a) = \mathbb{E}_{s' \sim P} \left[r(s, a) + \gamma \max_{a'} Q^*(s', a') \right]. \quad (5)$$

Assuming the function approximator of $Q^*(s, a)$ is a neural network $Q_\phi(s, a)$ with parameters ϕ , an essential part of DDPG is that computing the maximum over actions is intractable in continuous action spaces, therefore the algorithm uses a target policy network to compute an action which approximately maximizes $Q_{\phi_{\text{tar}}}$. Given the collection of transitions (s, a, r, s', d) in a set \mathcal{D} , where d denotes whether s' is terminal, we obtain the mean-squared Bellman error (MSBE) function with:

$$L^{\text{DDPG}}(\phi, \mathcal{D}) = \mathbb{E}_{(s, a, r, s', d) \sim \mathcal{D}} \left[(Q_\phi(s, a) - (r + \gamma(1 - d)Q_{\phi_{\text{tar}}}(s', \mu_{\theta_{\text{tar}}}(s'))))^2 \right]. \quad (6)$$

Related Work

MERL incorporates three key ideas: (a) the use of auxiliary quantities as a means to tackle the problem of reward sparsity, (b) the introduction of quantities of self-performance assessment and accurate expectations which constitute task-agnostic signals, more widely applicable than environment-specific prior knowledge, (c) policy and value function approximation with neural networks augmented with a multi-head layer.

Auxiliary tasks have been used to facilitate representation learning for decades (Sudderth and Kergosien 1990), along with intrinsic motivation (Schmidhuber 2010; Pathak et al. 2017) and artificial curiosity (Oudeyer and Kaplan 2007; Schmidhuber 1991). (Li et al. 2016) introduces a supervised loss for fitting a recurrent model on the hidden representations to predict the next observed state, in the context of imitation learning of sequences provided by experts. Other works on auxiliary tasks (Jaderberg et al. 2016; Mirowski et al. 2016; Burda et al. 2018) allow the agents to maximize other pseudo-reward functions simultaneously. Our method is much distinctive from those previous approaches. First, neither the introduction of additional neural networks (*e.g.* for memory) nor the introduction of a replay buffer is needed. Second, the quantities (or auxiliary tasks) we introduce are compatible with *any* task: previous methods only work on pixel-based environments. Third, MERL neither introduces additional iterations nor modifies the reward function of the policy gradient algorithms it is applied to. For all those reasons, MERL can be added out-of-the-box to most policy gradient algorithms with a negligible computational cost overhead.

From a different perspective, (Garcia and Fernández 2015) gives a detailed overview of previous work that has changed the optimality criterion as a safety factor. But most methods use a hard constraint rather than a penalty; one reason is that it is difficult to choose a single coefficient for this penalty that works well for different problems. We are successfully addressing this problem with MERL. In (Lipton et al. 2016), catastrophic actions are avoided by training an intrinsic fear model to predict whether a disaster will occur and using it to shape rewards. Compared to both methods, MERL is more scalable and lightweight while it incorporates quantities of self-performance assessments (e.g. variance explained of the value function) and accurate expectations (e.g. next state prediction) leading to an improved performance.

Finally, many previous studies have focused on the use of imitation learning to address a task directly. There are two main approaches: behavioral cloning (Pomerleau 1989), which attempts to learn a task policy through supervised learning, and inverse RL (Abbeel and Ng 2004), which attempts to learn a reward function from a set of demonstrations. Although, these successful approaches often push the agent only to learn how to perform a task from expert demonstrations with a relatively modest understanding of its own behavior. We propose a method that gives the agent relevant quantities that brings its learning closer to *how to learn to accomplish* the task at hand, in addition to being optimized to solve it.

MERL: Multi-Head Framework for Generalized Auxiliary Tasks

Our multi-head architecture and its associated learning algorithm are directly applicable to most state-of-the-art policy gradient methods. Let h be the index of each MERL head: MERL^h . In the context of DRL, we introduce two of the quantities predicted by these heads and show how to incorporate them in the policy gradient methods mentioned above.

Value Function and Policy

In DRL, the policy is generally represented in a neural network called the policy network, with parameters (weights) θ , and the value function is parameterized by the value network, with parameters ϕ . In the case of DDPG, the value network translates into the action-value network. Each MERL head MERL^h takes as input the last embedding layer from the value network and is constituted of only one layer of fully-connected neurons, with parameters ϕ_h . The output size of each head corresponds to the size of the predicted MERL quantity. Below, we introduce two examples of these quantities.

Variance Explained

Let us define the first quantity we use in MERL: the *fraction of variance explained* \mathcal{V}^{ex} . It is the fraction of variance that the value function V explains about the returns \hat{R} . Put differently, it corresponds to the proportion of the variance

in the dependent variable that is predictable from the independent variables. We compute \mathcal{V}^{ex} at each policy gradient update with the samples used for the gradient computation. In statistics, this quantity is also known as the coefficient of determination R^2 (Kvålseth 1985). For the sake of clarity, we will not use this notation for the coefficient of determination, but we will refer to this criterion as:

$$\mathcal{V}^{ex} = 1 - \frac{\sum_{t=0}^T (\hat{R}_t - V_\phi(s_t))^2}{\sum_{t=0}^T (\hat{R}_t - \bar{R})^2}. \quad (7)$$

where \hat{R}_t and $V(s_t)$ are respectively the return and the expected return from state s_t , and \bar{R} is the mean of all returns in the trajectory. It should be noted that this criterion may be negative for non-linear models, indicating a severe lack of fit (Kvålseth 1985) of the corresponding function:

- $\mathcal{V}^{ex} = 1$ if the fitted value function V_ϕ perfectly explains the returns;
- $\mathcal{V}^{ex} = 0$ corresponds to a simple average prediction;
- $\mathcal{V}^{ex} < 0$ if the fitted value function provides a worse fit to the outcomes than the mean of the discounted rewards.

We denote MERL^{VE} as the corresponding MERL head, with parameters ϕ^{VE} and its objective function is defined by:

$$L^{\text{MERL}^{\text{VE}}}(s, \phi, \phi^{\text{VE}}) = \min \| \text{MERL}^{\text{VE}}(s) - \mathcal{V}^{ex} \|_2^2. \quad (8)$$

Interpretation. \mathcal{V}^{ex} measures the ability of the value function to fit the returns. $\mathcal{V}^{ex} = 0.43$ implies that 43% of the variability of the dependent variable \hat{R} has been accounted for, and the remaining 57% of the variability is still unaccounted for. For instance in (Flet-Berliac and Preux 2019), \mathcal{V}^{ex} is used to filter the samples that will be used to update the policy. By its definition, this quantity is a highly relevant indicator for assessing self-performance in reinforcement learning.

Future States

At each timestep, one of the agent’s MERL heads tries to predict a future state s' from s . While a typical MERL quantity can be fit by regression on mean-squared error, we observed that predictions of future states are better fitted with a cosine-distance error. We denote MERL^{FS} the corresponding head, with parameters ϕ^{FS} , and S the observation space size (size of vector s). We define its objective function as:

$$L^{\text{MERL}^{\text{FS}}}(s, \phi, \phi^{\text{FS}}) = \min \left(1 - \frac{\sum_{i=1}^S \text{MERL}_i^{\text{FS}}(s) \cdot s'_i}{\sqrt{\sum_{i=1}^S (\text{MERL}_i^{\text{FS}}(s))^2} \sqrt{\sum_{i=1}^S (s'_i)^2}} \right). \quad (9)$$

Problem-Constrained Policy Update

Once the set of MERL heads MERL^h and their associated objective functions L^{MERL^h} have been defined, we modify the gradient update step of the policy gradient algorithms.

Algorithm 1 PPO+MERL update.

Initialize policy parameters θ_0

Initialize value function and MERL^h functions parameters ϕ_0

for $k = 0, 1, 2, \dots$ **do**

Collect a set of trajectories $\mathcal{D}_k = \{\tau_i\}$ with horizon T by running policy π_{θ_k} in the environment

Compute MERL^h estimates at timestep t from sampling the environment

Compute advantage estimates A_t at timestep t based on the current value function V_{ϕ_k}

Compute future rewards \hat{R}_t from timestep t

Gradient Update

$$\theta_{k+1} \leftarrow \operatorname{argmax}_{\theta} \sum_{\tau \in \mathcal{D}_k} \sum_{t=0}^T \min \left(\frac{\pi_{\theta}(a_t | s_t)}{\pi_{\theta_k}(a_t | s_t)} A^{\pi_{\theta_k}}(s_t, a_t), g(\epsilon, A^{\pi_{\theta_k}}(s_t, a_t)) \right) \quad (10)$$

$$\phi_{k+1} \leftarrow \operatorname{argmin}_{\phi} \sum_{\tau \in \mathcal{D}_k} \sum_{t=0}^T \left(V_{\phi_k}(s_t) - \hat{R}_t \right)^2 + \boxed{\operatorname{argmin}_{\phi} \sum_{h=0}^H c_h L^{\text{MERL}^h}} \quad (11)$$

The objective function incorporates all L^{MERL^h} . Of course, each MERL objective is associated with its coefficient c_h . Since in this paper we introduce two MERL heads, the corresponding two hyper-parameters are reported along with the others in the supplementary materials. It is worthy to note that we used the exact same MERL coefficients for all our experiments, which demonstrate the framework’s ease of applicability.

Algorithm 1 for PPO+MERL, and algorithm 3 (in the supplementary materials) for DDPG+MERL illustrate how the learning is achieved. In Eq. (11), only the (boxed) MERL objectives are added to the value update and modify the learning algorithm.

Experiments

Methodology

We evaluate MERL in multiple high-dimensional environments, ranging from *MuJoCo* (Todorov, Erez, and Tassa 2012) to the *Atari 2600* games (Bellemare et al. 2013) (we describe these environments in detail in Tables 5 and 6 in the supplementary materials). The experiments in *MuJoCo* allow us to evaluate the performance of MERL on a large number of different continuous control problems. It is worthy to note that the universal characteristics of the auxiliary quantities we choose ensure that MERL is generally applicable to any task. Other popular auxiliary methods (Jaderberg et al. 2016; Mirowski et al. 2016; Burda et al. 2018) cannot be applied to challenging continuous control tasks like *MuJoCo*. Thus, we naturally compare the performance of our method with on- and off-policy state-of-the-art methods (respectively, PPO (Schulman et al. 2017) and DDPG (Lillicrap et al. 2015)).

The experiments on the *Atari 2600* games allow us to study the transfer learning abilities of MERL on a set of diverse tasks.

Implementation. For the continuous control *MuJoCo* tasks, the agents have learned using separated policy and value networks. In this case, we build upon the value network (named the action-value network in the DDPG algorithm) to incorporate our framework’s heads. On the contrary, when playing *Atari 2600* games from pixels, the agents were given a CNN network shared between the policy and the value function. In that case, MERL^h are naturally attached to the last embedding layer of the shared network. In both configurations, the outputs of MERL^h heads are the same size as the quantity they predict: for instance, MERL^{VE} is a scalar whereas MERL^{FS} is a state.

Hyper-parameters Setting. We used the same hyper-parameters as in the main text of the respective papers. We made this choice within a clear and objective protocol of demonstrating the benefits of using MERL. Hence, its reported performance is not necessarily the best that can be obtained, but it still exceeds the baselines. Using MERL adds as many hyper-parameters as there are heads in the multi-head layer and it is worth noting that MERL hyper-parameters are the same for all tasks. We report all hyper-parameters in the supplementary materials.

Performance Measures. We examine the performance across a large number of trials (with different seeds for each task). Standard deviation and average return are generally considered to be the most stable measures used to compare the performance of the algorithms being studied (Islam et al. 2017). Thereby, in the rest of this work, we use those metrics to establish the performance of our framework quantitatively.

Single-Task Learning: Continuous Control

On-Policy Learning: PPO+MERL First, we apply MERL to PPO in several *MuJoCo* environments. Due to space constraints, only three graphs from varied tasks are

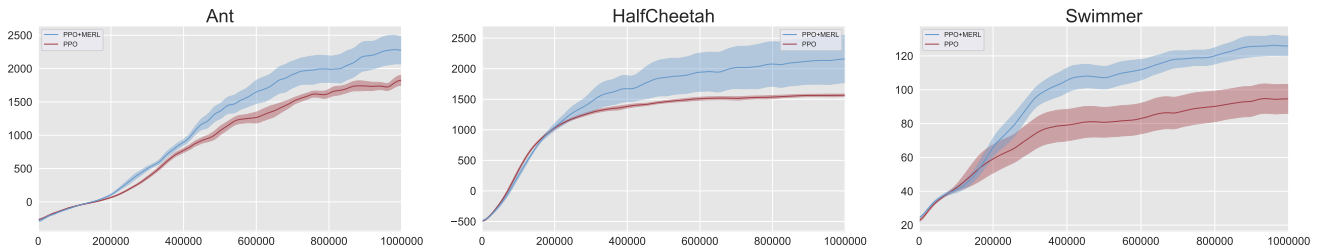


Figure 1: Experiments on 3 MuJoCo environments (10^6 timesteps, 7 seeds) with PPO+MERL. Red is the baseline, blue is our method. The line is the average performance, while the shaded area represents its standard deviation.

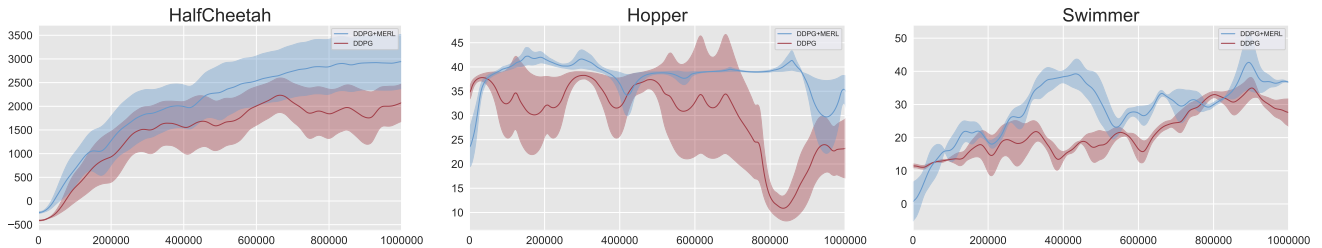


Figure 2: Experiments on 3 MuJoCo environments (10^6 timesteps, 5 seeds) with DDPG+MERL. Red is the baseline and blue our method. The line is the average performance, while the shaded area represents its standard deviation.

shown in Fig. 1. The complete set of 9 tasks is reported in Table 1 and the graphs are included in the supplementary materials.

Table 1: Average total reward $\pm std$ of the last 100 episodes over 7 runs on the 9 MuJoCo environments. **Boldface** indicate better performance.

Task	PPO	Ours
Ant	1728 \pm 64	2157 \pm 212
HalfCheetah	1557 \pm 21	2117 \pm 370
Hopper	2263 \pm 125	2105 \pm 200
Humanoid	577 \pm 10	603 \pm 8
InvertedDoublePendulum	5965 \pm 108	6604 \pm 130
InvertedPendulum	474 \pm 14	497 \pm 12
Reacher	-7.84 \pm 0.7	-7.78 \pm 0.8
Swimmer	93.2 \pm 8.7	124.6 \pm 5.6
Walker2d	2309 \pm 332	2347 \pm 353

We see from the curves that using MERL leads to better performance on a variety of continuous control tasks. Moreover, learning seems to be faster for some tasks, suggesting that MERL takes advantage of its heads to learn relevant quantities from the beginning of learning, when the reward may be sparse. Interestingly, by looking at the performance across all 9 tasks, we observed better results by predicting only the next state and not the subsequent ones.

Off-Policy Learning: DDPG+MERL Next, we tested MERL on the same *MuJoCo* tasks by choosing DDPG as the off-policy baseline. We experimented with several open-sourced implementation, including the one from OpenAI.

However, while others have reported similar issues in the open-sourced repository, it is difficult to tune DDPG to reproduce results from other works even when using their reported hyper-parameter setting and with various network architectures. Therefore, in Fig. 2, we report experiments for the tasks that have successfully been learned by the DDPG baseline, and we test MERL on those tasks. Similarly to PPO+MERL improving performance, the learning curves indicate that the learned loss modified by MERL is able to better train agents in situations where the learning is off-policy.

Transfer Learning: Atari Domain

Because of training time constraints, we consider a transfer learning setting where after the first 10^6 training steps, the agent switches to a new task and is trained for another 10^6 steps. The agent is not aware of the task switch. In total, we tested MERL on 20 pairs of tasks. *Atari 2600* has been a challenging testbed for many years due to its high-dimensional video input (size 210 x 160) and the discrepancy of tasks between games. To investigate the advantages of using MERL for transfer learning we choose a set of 6 different Atari games with an action space of 9, which is the average size of the action space in the Atari domain. This choice has two benefits: first, the neural network shared between the policy, the value function and MERL heads do not need to be further modified when performing transfer learning and second, the 6 games provide a diverse range of game-play while sticking to the same size of action space.

The results from Fig. 3 demonstrate that our method can reasonably adapt to a different task if we compare to the same method where MERL heads are not used. The com-

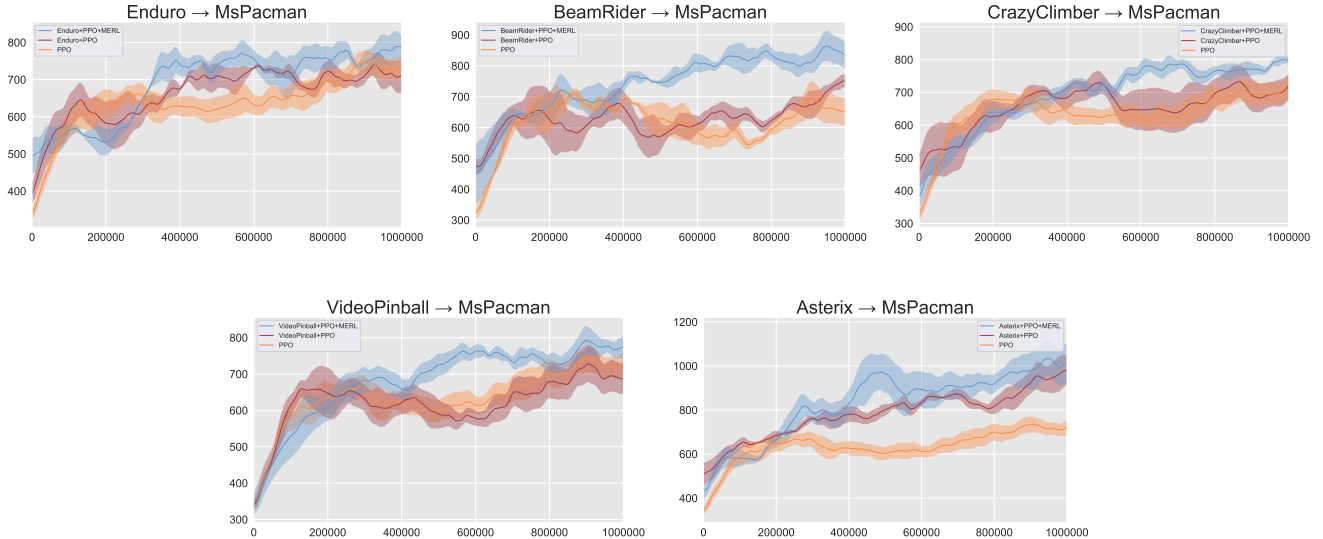


Figure 3: Transfer learning tasks from 5 Atari games to Ms. Pacman (2×10^6 timesteps, 4 seeds). Performance on the second task. Orange is PPO solely trained on Ms. Pacman, red and blue are respectively PPO and our method transferring the learning. The line is the average performance, while the shaded area represents its standard deviation.

plete set of graphs is in the supplementary materials in Fig. 6. Interestingly, the very few cases where our method does not give the best results are when the orange curve (no transfer) is the best performing. This means that for those tasks learning from scratch seems more adapted. For all the other task pairs, MERL performs better. We interpret this result with the intuition that MERL heads learn and help represent information that is more generally relevant for other tasks, such as self-performance assessment or accurate expectations. In addition to adding a regularization to the objective function through problem knowledge signals, those auxiliary quantities make the neural network optimize for task-agnostic objectives.

Ablation Study

We conduct an ablation study to evaluate the separate and combined contributions of the two heads. Fig. 4 shows the comparative results in HalfCheetah, Walker2d and Swimmer. Interestingly, with HalfCheetah, using only the MERL^{VE} head degrades the performance, but when combining it with the MERL^{FS} head, it outperforms PPO+FS. Results of the complete ablation analysis demonstrate that each head is potentially valuable for enhancing learning and that their combination can produce remarkable results.

Discussion

From the experiments, we see that MERL successfully optimizes the policy according to complementary quantities seeking for good performance and safe realization of tasks, *i.e.* it does not only maximize a reward but instead ensures the control problem is appropriately addressed. Moreover, we show that MERL is directly applicable to policy gradient methods while adding a negligible computation cost. In-

deed, for both *MuJoCo* and *Atari* tasks, the computational cost overhead is respectively 5% and 7% with our training infrastructure. All of these factors result in an algorithm that robustly solves high-dimensional control problems in a variety of areas with continuous action spaces or by using only raw pixels for observations.

Thanks to generalized auxiliary tasks framework and a consistent choice of complementary quantities injected in the optimization process, MERL can better align an agent’s objectives with higher-level insights into how to solve a control problem. Besides, since many current methods involve that successful learning depends on the agent’s ability to reach the goal by chance in the first place, correctly predicting MERL heads allow the agent to learn something useful while improving in this task. At the same time, it also addresses the problem of the sparsity of rewards.

Conclusion

In this paper, we introduced MERL, a generally applicable deep reinforcement learning framework for problem-focused representations in contrast with many current reward-centric algorithms. The virtual agent is able to predict problem-solving quantities in a multi-head layer to better address reinforcement learning problems. Our framework improves the performance of state-of-the-art on- and off-policy algorithms for continuous control *MuJoCo* tasks and *Atari 2600* games in transfer learning tasks.

With MERL, we inject environment-agnostic problem knowledge directly in the policy gradient optimization. The advantage of this framework is threefold. First, the agent learns a better representation for single-task learning, and that is generalizable to other tasks. The multi-head layer provides a more problem-focused representation to the function approximations, which is therefore not only reward-

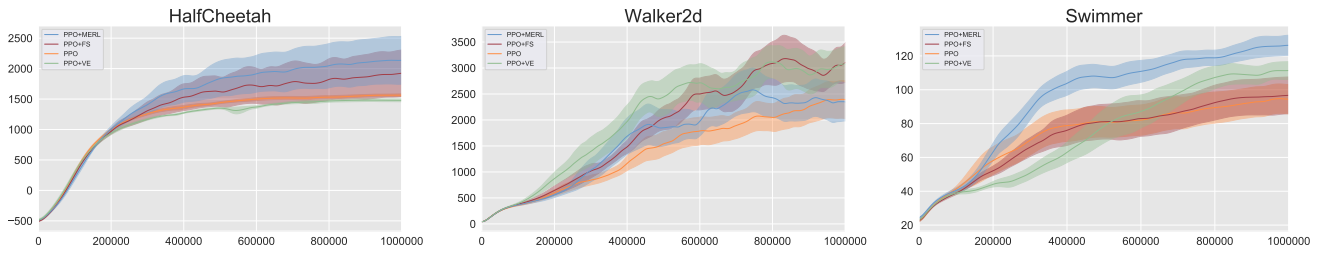


Figure 4: Ablation experiments with only one MERL head (FS or VE) (10^6 timesteps, 4 seeds). Blue is MERL with the two heads, red with the FS head, green with the VE head and orange with no MERL head. The line is the average performance, while the shaded area represents its standard deviation.

centric. Moreover, continuous problem-solving signals help to address the problem of reward sparsity. Second, MERL can be seen as being a hybrid model-free and model-based framework with a small and lightweight component for self-performance assessment and accurate expectations. MERL heads introduce additional regularization to the function approximation and additionally results in better performance and improved transfer learning. Third, MERL is directly applicable to most policy gradient algorithms and environments; it does not need to be redesigned for different problems and is not restricted to pixel-based tasks. Finally, it can be extended with many other relevant problem-solving quantities.

Although the relevance and higher performance of MERL have only been shown empirically, it would be interesting to study the theoretical contribution of this framework from the perspective of an implicit regularization of the agent’s representation on his environment. We also believe that predicting complementary quantities related to the objective of a task is a worthwhile idea to explore in supervised learning too. Finally, the identification of additional MERL quantities (*e.g.* prediction of immediate reward, prediction of time until the end of a trajectory) and the effect of their combination is also a research topic that we find most relevant for future works.

Acknowledgements

The authors would like to acknowledge the support of Inria, and Sequel for providing a great environment for this research. The authors also acknowledge the support from CPER Nord-Pas de Calais/FEDER DATA Advanced data science and technologies 2015-2020. This work was supported by the French Ministry of Higher Education and Research.

References

- [Abbeel and Ng 2004] Abbeel, P., and Ng, A. Y. 2004. Apprenticeship learning via inverse reinforcement learning. In *Proceedings of the twenty-first international conference on Machine learning*, 1. ACM.
- [Bellemare et al. 2013] Bellemare, M. G.; Naddaf, Y.; Veness, J.; and Bowling, M. 2013. The arcade learning environment: An evaluation platform for general agents. *Journal of Artificial Intelligence Research* 47:253–279.
- [Burda et al. 2018] Burda, Y.; Edwards, H.; Pathak, D.; Storkey, A.; Darrell, T.; and Efros, A. A. 2018. Large-scale study of curiosity-driven learning. *arXiv preprint arXiv:1808.04355*.
- [Burda et al. 2019] Burda, Y.; Edwards, H.; Storkey, A.; and Klimov, O. 2019. Exploration by random network distillation. In *International Conference on Learning Representations*.
- [Clouse and Utgoff 1992] Clouse, J. A., and Utgoff, P. E. 1992. A teaching method for reinforcement learning. In *Machine Learning*. Elsevier. 92–101.
- [Espeholt et al. 2018] Espeholt, L.; Soyer, H.; Munos, R.; Simonyan, K.; Mnih, V.; Ward, T.; Doron, Y.; Firoiu, V.; Harley, T.; Dunning, I.; et al. 2018. Impala: Scalable distributed deep-rl with importance weighted actor-learner architectures. In *International Conference on Machine Learning*, 1406–1415.
- [Flet-Berliac and Preux 2019] Flet-Berliac, Y., and Preux, P. 2019. Samples are not all useful: Denoising policy gradient updates using variance. *arXiv preprint arXiv:1904.04025*.
- [Garcia and Fernández 2015] Garcia, J., and Fernández, F. 2015. A comprehensive survey on safe reinforcement learning. *Journal of Machine Learning Research* 16(1):1437–1480.
- [Ha and Schmidhuber 2018] Ha, D., and Schmidhuber, J. 2018. Recurrent world models facilitate policy evolution.
- [Islam et al. 2017] Islam, R.; Henderson, P.; Gomrokchi, M.; and Precup, D. 2017. Reproducibility of benchmarked deep reinforcement learning tasks for continuous control. *arXiv preprint arXiv:1708.04133*.
- [Iyer et al. 2018] Iyer, R.; Li, Y.; Li, H.; Lewis, M.; Sundar, R.; and Sycara, K. P. 2018. Transparency and explanation in deep reinforcement learning neural networks. In *Proceedings of AAAI/ACM Conference on Artificial Intelligence, Ethics, and Society*. AAAI/ACM.
- [Jaderberg et al. 2016] Jaderberg, M.; Mnih, V.; Czarnecki, W. M.; Schaul, T.; Leibo, J. Z.; Silver, D.; and Kavukcuoglu, K. 2016. Reinforcement learning with unsupervised auxiliary tasks. *arXiv preprint arXiv:1611.05397*.
- [Kvålseth 1985] Kvålseth, T. O. 1985. Cautionary Note about R^2 . *The American Statistician* 39(4):279–285.

- [Li et al. 2016] Li, X.; Li, L.; Gao, J.; He, X.; Chen, J.; Deng, L.; and He, J. 2016. Recurrent reinforcement learning: a hybrid approach. In *International Conference on Learning Representations*.
- [Lillicrap et al. 2015] Lillicrap, T. P.; Hunt, J. J.; Pritzel, A.; Heess, N.; Erez, T.; Tassa, Y.; Silver, D.; and Wierstra, D. 2015. Continuous control with deep reinforcement learning. *arXiv preprint arXiv:1509.02971*.
- [Lin 1992] Lin, L.-J. 1992. Self-improving reactive agents based on reinforcement learning, planning and teaching. *Machine Learning* 8(3-4):293–321.
- [Lipton et al. 2016] Lipton, Z. C.; Azizzadenesheli, K.; Kumar, A.; Li, L.; Gao, J.; and Deng, L. 2016. Combating reinforcement learning’s sisyphian curse with intrinsic fear. *arXiv preprint arXiv:1611.01211*.
- [Mirowski et al. 2016] Mirowski, P.; Pascanu, R.; Viola, F.; Soyer, H.; Ballard, A. J.; Banino, A.; Denil, M.; Goroshin, R.; Sifre, L.; Kavukcuoglu, K.; et al. 2016. Learning to navigate in complex environments. *arXiv preprint arXiv:1611.03673*.
- [Mnih et al. 2013] Mnih, V.; Kavukcuoglu, K.; Silver, D.; Graves, A.; Antonoglou, I.; Wierstra, D.; and Riedmiller, M. 2013. Playing atari with deep reinforcement learning. *arXiv preprint arXiv:1312.5602*.
- [Mnih et al. 2016] Mnih, V.; Badia, A. P.; Mirza, M.; Graves, A.; Lillicrap, T.; Harley, T.; Silver, D.; and Kavukcuoglu, K. 2016. Asynchronous methods for deep reinforcement learning. In *International Conference on Machine Learning*, 1928–1937.
- [Moreno et al. 2004] Moreno, D. L.; Regueiro, C. V.; Iglesias, R.; and Barro, S. 2004. Using prior knowledge to improve reinforcement learning in mobile robotics. In *Proceedings Towards Autonomous Robotics Systems*.
- [Nguyen and Widrow 1990] Nguyen, D., and Widrow, B. 1990. The truck backer-upper: An example of self-learning in neural networks. In *Advanced Neural Computers*, 11–19.
- [Oudeyer and Kaplan 2007] Oudeyer, P.-Y., and Kaplan, F. 2007. What is intrinsic motivation? a typology of computational approaches. *Frontiers in Neurobotics* 1:6.
- [Pathak et al. 2017] Pathak, D.; Agrawal, P.; Efros, A. A.; and Darrell, T. 2017. Curiosity-driven exploration by self-supervised prediction. In *Proceedings of the IEEE Conference on Computer Vision and Pattern Recognition Workshops*, 16–17.
- [Pomerleau 1989] Pomerleau, D. A. 1989. Alvin: An autonomous land vehicle in a neural network. In *Advances in neural information processing systems*, 305–313.
- [Ribeiro 1998] Ribeiro, C. H. 1998. Embedding a priori knowledge in reinforcement learning. *Journal of Intelligent and Robotic Systems* 21(1):51–71.
- [Robinson and Fallside 1989] Robinson, T., and Fallside, F. 1989. Dynamic reinforcement driven error propagation networks with application to game playing. In *Conference of the Cognitive Science Society*, 836–843.
- [Schmidhuber and Huber 1991] Schmidhuber, J., and Huber, R. 1991. Learning to generate artificial fovea trajectories for target detection. *International Journal of Neural Systems* 2(1/2):135–141.
- [Schmidhuber 1991] Schmidhuber, J. 1991. Curious model-building control systems. In *IEEE International Joint Conference on Neural Networks*, 1458–1463. IEEE.
- [Schmidhuber 2010] Schmidhuber, J. 2010. Formal theory of creativity, fun, and intrinsic motivation (1990–2010). *IEEE Transactions on Autonomous Mental Development* 2(3):230–247.
- [Schulman et al. 2015] Schulman, J.; Levine, S.; Abbeel, P.; Jordan, M. I.; and Moritz, P. 2015. Trust region policy optimization. In *International Conference on Machine Learning*, 1928–1937.
- [Schulman et al. 2017] Schulman, J.; Wolski, F.; Dhariwal, P.; Radford, A.; and Klimov, O. 2017. Proximal policy optimization algorithms. *arXiv preprint arXiv:1707.06347*.
- [Silver et al. 2014] Silver, D.; Lever, G.; Heess, N.; Degris, T.; Wierstra, D.; and Riedmiller, M. 2014. Deterministic policy gradient algorithms. In *International Conference on Machine Learning*, 387–395.
- [Silver et al. 2016] Silver, D.; Huang, A.; Maddison, C. J.; Guez, A.; Sifre, L.; Van Den Driessche, G.; Schrittwieser, J.; Antonoglou, I.; Panneershelvam, V.; Lanctot, M.; et al. 2016. Mastering the game of Go with deep neural networks and tree search. *Nature* 529:484.
- [Suddarth and Kergosien 1990] Suddarth, S., and Kergosien, Y. 1990. Rule-injection hints as a means of improving network performance and learning time. *Neural Networks* 120–129.
- [Sutton and Barto 1998] Sutton, R. S., and Barto, A. G. 1998. *Introduction to reinforcement learning*. Cambridge: MIT Press.
- [Sutton et al. 2000] Sutton, R. S.; McAllester, D. A.; Singh, S. P.; and Mansour, Y. 2000. Policy gradient methods for reinforcement learning with function approximation. In *Advances in Neural Information Processing Systems*, 1057–1063.
- [Todorov, Erez, and Tassa 2012] Todorov, E.; Erez, T.; and Tassa, Y. 2012. Mujoco: A physics engine for model-based control. In *2012 IEEE/RSJ International Conference on Intelligent Robots and Systems*, 5026–5033. IEEE.
- [Werbos 1989] Werbos, P. J. 1989. Neural networks for control and system identification. In *IEEE Conference on Decision and Control*, 260–265.
- [Whitehead 1991] Whitehead, S. 1991. Complexity and cooperation in q-learning. In *Eighth International Workshop on Machine Learning*, 363–367.

Full Benchmark results

Single-Task Learning

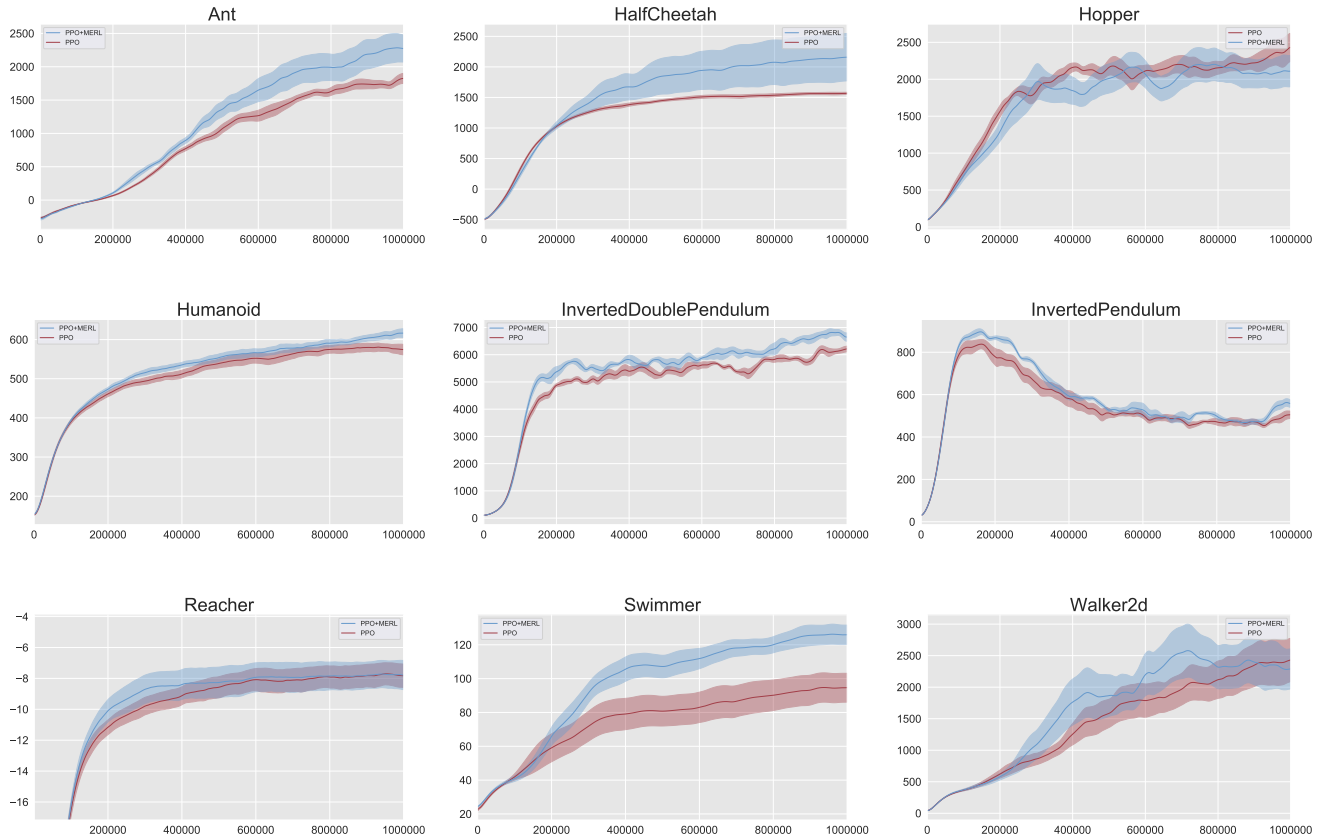


Figure 5: Experiments on 9 MuJoCo environments (10^6 timesteps, 7 seeds) with PPO+MERL. Red is the baseline, blue is with our method. The line is the average performance, while the shaded area represents its standard deviation.

Transfer Learning

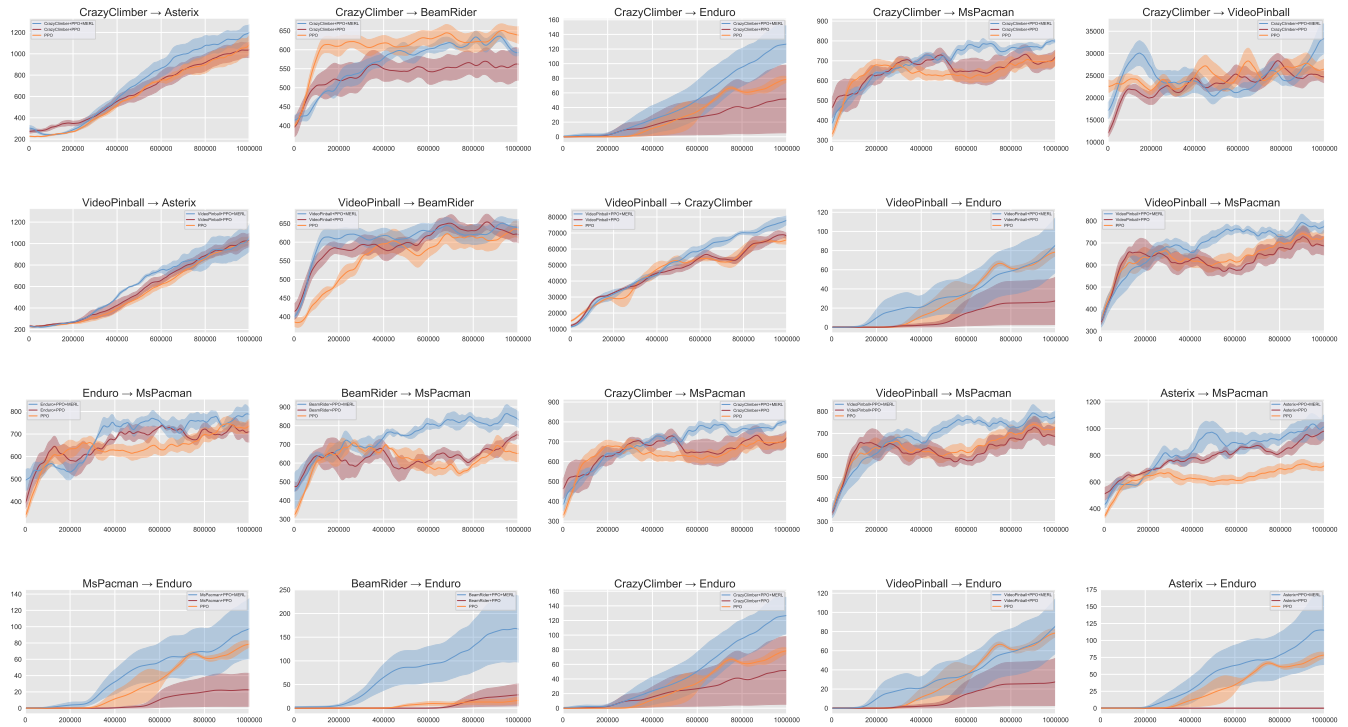


Figure 6: Experiments on the 20 transfer learning pairs with 6 Atari games (2×10^6 timesteps, 4 seeds). Orange is PPO solely trained on the subsequent 5 tasks, red is PPO transfer learning and blue is PPO+MERL transfer learning. The line is the average performance, while the shaded area represents its standard deviation.

Hyper-parameters

Table 2: Hyper-parameters used in PPO+MERL

Hyper-parameter	Value
Horizon (T)	2048 (MuJoCo), 128 (Atari)
Adam stepsize	$3 \cdot 10^{-4}$ (MuJoCo), $2.5 \cdot 10^{-4}$ (Atari)
Nb. epochs	10 (MuJoCo), 3 (Atari)
Minibatch size	64 (MuJoCo), 32 (Atari)
Number of actors	1 (MuJoCo), 4 (Atari)
Discount (γ)	0.99
GAE parameter (λ)	0.95
Clipping parameter (ϵ)	0.2 (MuJoCo), 0.1 (Atari)
Value function coef	0.5

Table 3: Hyper-parameters used in DDPG+MERL

Hyper-parameter	Value
Learning rate actor	$1 \cdot 10^{-4}$
Learning rate critic	$1 \cdot 10^{-3}$
Minibatch size	64
Training steps	50
Discount (γ)	0.99
Buffer size	100000
Nb. cycles	10
Critic L2 reg.	0.01

Table 4: MERL hyper-parameters

Hyper-parameter	Value
MERL ^{VE} coef c_{VE}	0.5
MERL ^{FS} coef c_{FS}	0.01

Implementation details

Function Approximations with Neural Networks

Unless otherwise stated, the policy network used for the MuJoCo tasks is a fully-connected multi-layer perceptron with two hidden layers of 64 units. For Atari, the network is shared between the policy and the value function and is the same as in (Mnih et al. 2016). Each additional head MERL ^{h} is composed of a small fully-connected layer and outputs the desired quantity.

MERL+PPO and MERL+DDPG Algorithms

In Eq. (14), the targets are computed, then in Eq. (15) and Eq. (16) respectively the Q-function and MERL ^{h} are updated by one step of gradient descent (each MERL objective is associated with its loss coefficient c_h). In Eq. (17), the policy is updated by one step of gradient ascent. Finally, in Eq. (19), the targets networks are updated with ρ a hyper-parameter between 0 and 1.

Algorithm 2 PPO+MERL update.

Initialize policy parameters θ_0

Initialize value function and MERL^h functions parameters ϕ_0

for $k = 0, 1, 2, \dots$ **do**

Collect a set of trajectories $\mathcal{D}_k = \{\tau_i\}$ with horizon T by running policy π_{θ_k} in the environment.

Compute MERL^h estimates at timestep t from sampling the environment.

Compute advantage estimates A_t at timestep t based on the current value function V_{ϕ_k} .

Compute future rewards \hat{R}_t from timestep t .

Gradient Update

$$\theta_{k+1} \leftarrow \operatorname{argmax}_{\theta} \sum_{\tau \in \mathcal{D}_k} \sum_{t=0}^T \min \left(\frac{\pi_{\theta}(a_t | s_t)}{\pi_{\theta_k}(a_t | s_t)} A^{\pi_{\theta_k}}(s_t, a_t), g(\epsilon, A^{\pi_{\theta_k}}(s_t, a_t)) \right) \quad (12)$$

$$\phi_{k+1} \leftarrow \operatorname{argmin}_{\phi} \sum_{\tau \in \mathcal{D}_k} \sum_{t=0}^T \left(V_{\phi_k}(s_t) - \hat{R}_t \right)^2 + \boxed{\operatorname{argmin}_{\phi} \sum_{h=0}^H c_h L^{\text{MERL}^h}} \quad (13)$$

Algorithm 3 DDPG+MERL update.

Initialize policy parameters θ

Initialize Q-function and MERL^h functions parameters ϕ

Initialize empty replay buffer \mathcal{D}

Set target parameters: $\theta_{\text{target}} \leftarrow \theta$ and $\phi_{\text{target}} \leftarrow \phi$

while did not converge **do**

Observe state s and select action a

Execute action a in the environment

Observe next state s' , reward r and done signal d to indicate whether s' is terminal

Collect (s, a, r, s', d) in the replay buffer \mathcal{D} , if s' is terminal, reset the environment state

if time to update **then**

for $k = 0, 1, 2, \dots$ **do**

Randomly sample a batch $B = \{(s, a, r, s', d)\}$ of transitions from \mathcal{D} .

Compute targets

$$y(r, s', d) = r + \gamma(1 - d)Q_{\phi_{\text{target}}}(s', \mu_{\theta_{\text{target}}}(s')) \quad (14)$$

Gradient Update

$$\phi_{k+1} \leftarrow \operatorname{argmin}_{\phi} \sum_B (Q_{\phi}(s, a) - y(r, s', d))^2 \quad (15)$$

$$+ \boxed{\operatorname{argmin}_{\phi} \sum_{h=0}^H c_h L^{\text{MERL}^h}} \quad (16)$$

$$\theta_{k+1} \leftarrow \operatorname{argmax}_{\theta} \sum_B Q_{\phi}(s, \mu_{\theta}(s)) \quad (17)$$

$$\phi_{\text{target}} \leftarrow \rho \phi_{\text{target}} + (1 - \rho) \phi \quad (18)$$

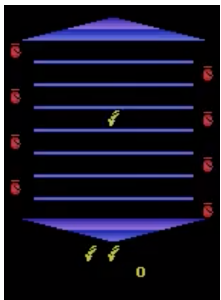
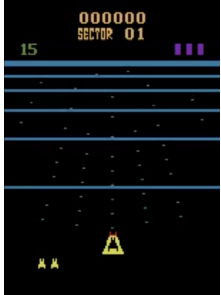
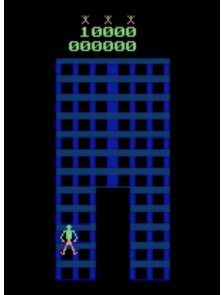
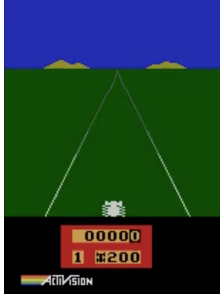
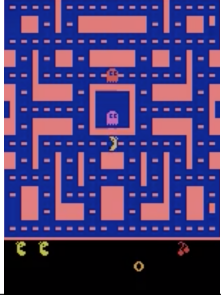

$$\theta_{\text{target}} \leftarrow \rho \theta_{\text{target}} + (1 - \rho) \theta \quad (19)$$

Environments

Table 5: MuJoCo Environments

Environment	Description
Ant-v2	Make a four-legged creature walk forward as fast as possible.
HalfCheetah-v2	Make a 2D cheetah robot run.
Hopper-v2	Make a two-dimensional one-legged robot hop forward as fast as possible.
Humanoid-v2	Make a three-dimensional bipedal robot walk forward as fast as possible, without falling over.
InvertedPendulum-v2	This is a MuJoCo version of CartPole. The agent's goal is to balance a pole on a cart.
InvertedDoublePendulum-v2	This is a harder version of InvertedPendulum, where the pole has another pole on top of it. The agent's goal is to balance a pole on a pole on a cart.
Reacher-v2	Make a 2D robot reach to a randomly located target.
Swimmer-v2	Make a 2D robot swim.
Walker2d-v2	Make a two-dimensional bipedal robot walk forward as fast as possible.

Table 6: Every Atari 2600 games with action space size = 9

Environment	Screenshot	Description
AsterixNoFrameskip-v4		<p>The agent guides Taz between the stage lines in order to eat hamburgers and avoid the dynamites.</p>
BeamRiderNoFrameskip-v4		<p>The agents objective is to clear the Shields 99 sectors of alien craft while piloting the BeamRider ship.</p>
CrazyClimberNoFrameskip-v4		<p>The agent assumes the role of a person attempting to climb to the top of four skyscrapers.</p>
EnduroNoFrameskip-v4		<p>Enduro consists of manoeuvring a race car. The objective of the race is to pass a certain number of cars each day. Doing so will allow the player to continue racing for the next day.</p>
MsPacmanNoFrameskip-v4		<p>The gameplay of Ms. Pac-Man is very similar to that of the original Pac-Man. The player earns points by eating pellets and avoiding ghosts.</p>
VideoPinballNoFrameskip-v4		<p>Video Pinball is a loosesimulation of a pinball machine: ball shooter, flippers, bumpers and spinners.</p>