



**HAL**  
open science

## Current knowledge and future research opportunities for modeling annual crop mixtures. A review

Noémie N. Gaudio, Abraham Escobar Gutierrez Escobar-Gutiérrez, Pierre Casadebaig, Jochem Evers, Frederic F. Gerard, Gaëtan Louarn, Nathalie Colbach, Sebastian Munz, Marie Launay, Hélène Marrou, et al.

### ► To cite this version:

Noémie N. Gaudio, Abraham Escobar Gutierrez Escobar-Gutiérrez, Pierre Casadebaig, Jochem Evers, Frederic F. Gerard, et al.. Current knowledge and future research opportunities for modeling annual crop mixtures. A review. *Agronomy for Sustainable Development*, 2019, 39 (2), pp.1-39. 10.1007/s13593-019-0562-6 . hal-02228974

**HAL Id: hal-02228974**

**<https://inria.hal.science/hal-02228974>**

Submitted on 1 Aug 2019

**HAL** is a multi-disciplinary open access archive for the deposit and dissemination of scientific research documents, whether they are published or not. The documents may come from teaching and research institutions in France or abroad, or from public or private research centers.

L'archive ouverte pluridisciplinaire **HAL**, est destinée au dépôt et à la diffusion de documents scientifiques de niveau recherche, publiés ou non, émanant des établissements d'enseignement et de recherche français ou étrangers, des laboratoires publics ou privés.



# Current knowledge and future research opportunities for modeling annual crop mixtures. A review

Noémie Gaudio<sup>1</sup> · Abraham J. Escobar-Gutiérrez<sup>2</sup> · Pierre Casadebaig<sup>1</sup> · Jochem B. Evers<sup>3</sup> · Frédéric Gérard<sup>4</sup> · Gaëtan Louarn<sup>2</sup> · Nathalie Colbach<sup>5</sup> · Sebastian Munz<sup>6</sup> · Marie Launay<sup>7</sup> · Hélène Marrou<sup>8</sup> · Romain Barillot<sup>2</sup> · Philippe Hinsinger<sup>4</sup> · Jacques-Eric Bergez<sup>1</sup> · Didier Combes<sup>2</sup> · Jean-Louis Durand<sup>2</sup> · Ela Frak<sup>2</sup> · Loïc Pagès<sup>9</sup> · Christophe Pradal<sup>10,11</sup> · Sébastien Saint-Jean<sup>12</sup> · Wopke Van Der Werf<sup>3</sup> · Eric Justes<sup>8</sup>

Accepted: 4 February 2019 / Published online: 8 March 2019  
© INRA and Springer-Verlag France SAS, part of Springer Nature 2019

## Abstract

Growing mixtures of annual arable crop species or genotypes is a promising way to improve crop production without increasing agricultural inputs. To design optimal crop mixtures, choices of species, genotypes, sowing proportion, plant arrangement, and sowing date need to be made but field experiments alone are not sufficient to explore such a large range of factors. Crop modeling allows to study, understand, and ultimately design cropping systems and is an established method for sole crops. Recently, modeling started to be applied to annual crop mixtures as well. Here, we review to what extent crop simulation models and individual-based models are suitable to capture and predict the specificities of annual crop mixtures. We argued that (1) the crop mixture spatio-temporal heterogeneity (influencing the occurrence of ecological processes) determines the choice of the modeling approach (plant or crop centered). (2) Only few crop models (adapted from sole crop models) and individual-based models currently exist to simulate annual crop mixtures. Crop models are mainly used to address issues related to both crop mixtures management and the integration of crop mixtures into larger scales such as the rotation. In contrast, individual-based models are mainly used to identify plant traits involved in crop mixture performance and to quantify the relative contribution of the different ecological processes (niche complementarity, facilitation, competition, plasticity) to crop mixture functioning. This review highlights that modeling of annual crop mixtures is in its infancy and gives to model users some important keys to choose the model based on the questions they want to answer, with awareness of the strengths and weaknesses of each of the modeling approaches.

**Keywords** Annual crop mixtures · Intercrops · Genotypes mixtures · Crop models · Individual-based models · Functional-structural plant models · Model users

✉ Noémie Gaudio  
noemie.gaudio@inra.fr

<sup>1</sup> AGIR, University of Toulouse, INRA, Castanet-Tolosan, France

<sup>2</sup> INRA, URP3F, Equipe Ecophysiologie des Plantes Fourragères, Le Chêne – RD 150, BP 6, 86600 Lusignan, France

<sup>3</sup> Centre for Crop Systems Analysis, Wageningen University and Research, Wageningen, the Netherlands

<sup>4</sup> Eco&Sols, University Montpellier, CIRAD, INRA, IRD, SupAgro, Place Viala, 34060 Montpellier, France

<sup>5</sup> Agroécologie, AgroSup Dijon, INRA, University Bourgogne Franche-Comté, 21000 Dijon, France

<sup>6</sup> Department of Agronomy, Institute of Crop Science, University of Hohenheim, Stuttgart, Germany

<sup>7</sup> INRA, US1116 AgroClim, Agroparc, 84914 Avignon Cedex 9, France

<sup>8</sup> CIRAD, UMR SYSTEM, University Montpellier, CIHEAM-IAMM, CIRAD, INRA, Montpellier Supagro, 34398 Montpellier, France

<sup>9</sup> INRA, Centre PACA, UR PSH 1115, Agroparc, 84914 Avignon Cedex 9, France

<sup>10</sup> AGAP, University Montpellier, CIRAD, INRA, SupAgro, Montpellier, France

<sup>11</sup> CIRAD, AGAP, and INRIA Zenith, Univ Montpellier, Montpellier, France

<sup>12</sup> UMR ECOSYS INRA, AgroParisTech, Université Paris-Saclay, 78850 Thiverval-Grignon, France

## Contents

1. [Introduction](#)
  2. [Classification of annual crop mixtures focusing on the spatial scale of ecological processes](#)
    - 2.1. [Spatio-temporal heterogeneity defines the types of annual crop mixtures](#)
    - 2.2. [Relative importance of ecological processes in the three types of annual crop mixtures](#)
  3. [General features of current modeling approaches](#)
    - 3.1. [Crop models](#)
    - 3.2. [Individual-based models](#)
  4. [Using modeling to study annual crop mixtures](#)
    - 4.1. [Different models for different purposes](#)
    - 4.2. [Suitable management for annual crop mixtures: choosing species, genotypes, sowing date and density, and spatial arrangement](#)
    - 4.3. [Plant traits involved in annual crop mixture performance](#)
    - 4.4. [Representation and relative importance of ecological processes](#)
    - 4.5. [Complementarity of the modeling approaches](#)
  5. [Conclusions and perspectives](#)
- [Acknowledgments](#)
- [References](#)

## 1 Introduction

The discipline of crop modeling emerged in the 1950s (Keating and Thorburn 2018) and is recognized as a crucial and operational tool to support improvement of cropping systems. One of its main strengths is that it enables multiple combinations of environments (climate and soil), genotypes, and agricultural practices to be explored and compared based on current knowledge of crop functioning in interaction with the environment (Bergez et al. 2010; Boote et al. 2013; Jeuffroy et al. 2014). A large scientific community supports crop modeling in international consortia, such as AgMIP (“Agricultural Model Intercomparison and Improvement Project”; Rosenzweig et al. 2013), to develop, improve, and evaluate models. For mainstream sole cropping systems (i.e., one genotype), crop modeling has been used to identify factors that limit crop productivity (e.g., Brisson et al. 2010), assess environmental impacts of crops (e.g., Liu et al. 2016), decrease inputs through improved management decisions (e.g., maize crop irrigation, Bergez et al. 2001; wheat fertilization, Chatelin et al. 2005), and aid breeding of new cultivars (reviewed by Chenu et al. 2017). At the field scale, sole crops are relatively homogeneous, especially when external inputs are used. Currently, crop modeling is facing challenges because the agroecological transition involves changes in agricultural practices (higher plant diversity, lower inputs, less tillage, biological regulation, tolerating residual weeds, etc.), which result in agroecosystems with greater complexity.

Increasing public concerns about human and environmental health issues related to intensive agricultural systems over the past 70 years in Western industrialized countries have prompted policy makers and scientists to search for alternative management strategies, such as more diversified cropping systems (Duru et al. 2015).

Increasing plant diversity in agriculture is suggested as a pathway towards more resilient and sustainable production systems (Lin 2011; Altieri et al. 2015; Raseduzzaman and Jensen 2017). At the farm scale, diversification can occur by diversifying crops in rotations (Gliessman 2014; Reckling 2016) and integrating agroecological pest (i.e., any organism harmful for crops) management to decrease pesticide use at farm and landscape scales (Lechenet et al. 2017; Hatt et al. 2018). At the field scale, plant diversity can increase using within-field mixtures of at least two annual crop species (i.e., intercropping; Fig. 1; Vandermeer 1989) or genotypes of the same species, both hereafter referred to as “annual crop mixtures.” Studies have demonstrated advantages of annual crop mixtures compared to their corresponding sole crops (reviewed by Lithourgidis et al. 2011; Bedoussac et al. 2015; Brooker et al. 2015; Li-li et al. 2015 for species diversity and Zeller et al. 2012; Creissen et al. 2016; Barot et al. 2017 for genotype diversity). Recent reviews and meta-analyses summarized the main ecosystem services they can deliver (Kiaer et al. 2009; Malézieux et al. 2009; Kremen and Miles 2012; Ehrmann and Ritz 2014; Altieri et al. 2015; Barot et al. 2017; Duchene et al. 2017; Raseduzzaman and Jensen 2017), highlighting their benefits for crop production (e.g., yield quality, quantity and stability), improvement of soil biogeochemistry (e.g., fertility, water flow regulation), improvement of biological pest control, and climate regulation by mitigating greenhouse gas emissions.

Despite the potential of annual crop mixtures, they are under-represented in modern agriculture (Machado 2009; Costanzo and Bàrberi 2014). Like for sole crops, modeling could provide management guidelines to promote and optimize their use. More specifically, designing productive and



**Fig. 1** Relay-strip intercrop of maize and wheat in the Netherlands (Source: J. Evers, Wageningen University and Research)

resilient crop mixtures is challenging, particularly with respect to (i) the choice and proportions of species and genotypes (Baxevanos et al. 2017) and (ii) their spatio-temporal arrangement in the field (Wezel et al. 2014). Both are intended to optimize plant–plant complementarities and positive interactions while minimizing competition to best respond to the existing environment in space and time (Hinsinger et al. 2011; Brooker et al. 2015, 2016). Nevertheless, if crop mixtures are not adequately managed, they may not provide more benefits than sole crops (Brooker et al. 2015). In response, models can analyze and promote the use of crop mixtures (Malézieux et al. 2009) by guiding the design of plant arrangement, the duration of temporal overlap, and plant characteristics, as well as predicting crop mixtures behavior and the services they deliver, and increasing understanding of their functioning. Additionally, breeding, currently used to increase sole crop performance, may not be optimal for crop mixtures, especially due to trait plasticity (Zhu et al. 2016; Kiaer and Boesen 2018). Therefore, models could also help identify ideotypes for crop mixtures and quantify the relative importance of trait values and plasticity (Litrice and Violle 2015).

Modeling of annual crop mixtures is under development, and the few models that currently exist focus mainly on abiotic resource partitioning. Two main modeling approaches are currently used: (i) process-based crop models, in which crop characteristics are represented at the field scale (Launay et al. 2009; Knörzer et al. 2011; Fayaud et al. 2014; Munz et al. 2014; Gou et al. 2017b), and (ii) individual-based models (IBMs), in which each plant is represented individually at various levels of architectural realism (Garcia-Barrios et al. 2001; Potting et al. 2005; Postma and Lynch 2012; Barillot et al. 2014b; Colbach et al. 2014b; Zhu et al. 2015). These models have difficulty representing the specific characteristics and complexity of crop mixtures because they may not completely capture certain processes (complementarity, facilitation, resource partitioning, etc.) that influence crop mixture performance. Therefore, it is necessary to assess whether existing models can address the issues of annual crop mixtures. If not, existing models should be adapted or new models and modeling approaches should be developed (Affholder et al. 2012) to represent concepts of crop mixtures that differ fundamentally from those of sole crops.

This paper aims at assessing suitable modeling approaches to the issues of annual crop mixtures and at highlighting issues that cannot be addressed by current models. Annual crop mixtures are classified based on spatio-temporal heterogeneity and the assumption that agroecosystem heterogeneity influences the types of models and their corresponding formalisms. A universal model applicable to all agroecosystems is not feasible; therefore, model development depends on the system and the issues considered (Sinclair and Seligman 1996; Affholder et al. 2012). The key ecological processes within crop mixtures are discussed, focusing on the spatial scale at

which they occur and their relative importance as a function of the type of crop mixture. Then, the paper focuses on the ability of existing models (crop models and IBMs) to represent the types of crop mixtures identified. The main features and applications of each modeling approach are discussed. Our review focuses particularly on analyzing strengths, weaknesses, and the complementarity of existing models as an initial step to help improving them in the future.

## 2 Classification of annual crop mixtures focusing on the spatial scale of ecological processes

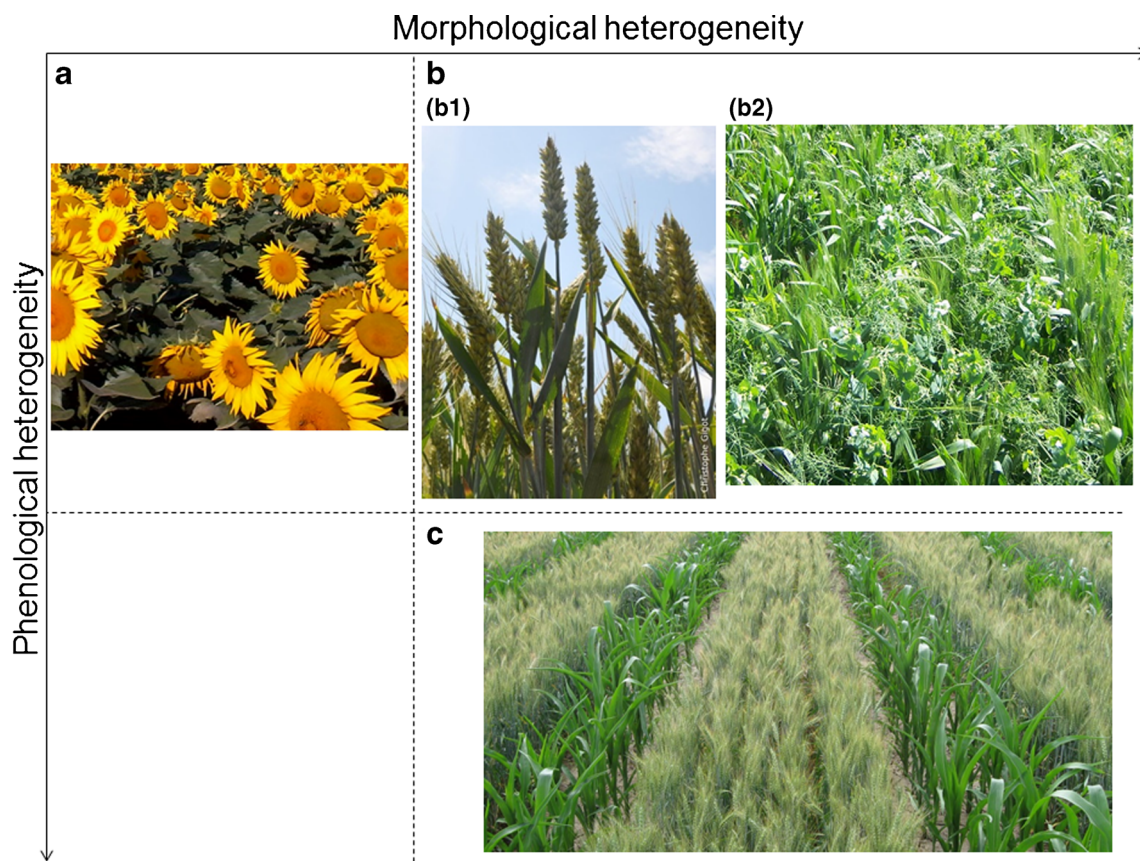
We focused on mixtures of at least two annual cash crops in which the spatio-temporal arrangement is particularly important for both crops, thus excluding mixtures of a cash crop (usually with a defined spatial arrangement) and a broadcast undersown cover crop (e.g., Arim et al. 2006).

### 2.1 Spatio-temporal heterogeneity defines the types of annual crop mixtures

Spatio-temporal arrangements and plant components (species/genotypes) of crop mixtures are diverse (Gaba et al. 2015), resulting in varying levels of heterogeneity within the crop. Thus, a continuum exists within annual crops (Malézieux et al. 2009), ranging from high crop homogeneity—sole crops of a single genotype or genotype mixtures where genotypes differ only in resistance to pests (Finckh et al. 2000; Tooker and Frank 2012)—to high heterogeneity—crop mixtures of species or genotypes with contrasting morphology and phenology (Essah and Stoskopf 2002; Barillot et al. 2014a; Wang et al. 2015; Montazeaud et al. 2017; Vidal et al. 2018). Morphology is described by plant architecture (Godin 2000; Bucksch et al. 2017), while phenology is related to the key stages of plant development (from emergence to maturity, Lieth 1974), keeping in mind that genotypes and species can still differ by inherent physiological differences not related to morphology and phenology (e.g., secondary metabolites deterring attacks from herbivores).

Three types of annual crop mixtures were defined according to their level of heterogeneity (Fig. 2): type A, in which plant components have similar phenologies and morphologies; type B, in which plant components have contrasting morphologies but relatively similar phenologies; and type C, in which plant components have contrasting phenologies and morphologies.

Within this classification, spatio-temporal arrangements of crop mixtures meet morphological and phenological heterogeneity requirements for harvest. For instance, relay-strip intercrops of wheat and maize (type C) combine two species with highly contrasting phenologies; therefore, they are



**Fig. 2** Classification of annual crop mixtures based on a double gradient of phenological and morphological heterogeneities. Morphological heterogeneity is related to plant architecture, while phenological heterogeneity is related to the level of asynchrony of key developmental stages. Photos: (A) within-row mixture of three genotypes of sunflower with contrasting degrees of pest resistance, France (Source: C. Bonnet,

INRA AGIR); (B1) within-row mixture of two genotypes of wheat, France (Source: C. Gigot, INRA AgroParisTech EcoSys); (B2) alternate-row mixture of wheat and pea, France (Source: L. Bedoussac, ENSFEA, INRA AGIR); (C) relay-strip intercrop of wheat and maize, the Netherlands (Source: J. Evers, Wageningen University and Research)

usually sown on different dates in alternate strips to maximize resource use, which results in temporally separated harvests (Li et al. 2001; Gao et al. 2010; Wang et al. 2015; Gou et al. 2017a). It is also the case with some mixtures of genotypes despite these agroecosystems are rarely used in agriculture, e.g., relay-strip mixture of spring- and summer-maize (Ning et al. 2012). In contrast, homogeneous genotypes of rice (type A; Han et al. 2016), morphologically different genotypes of wheat (type B1; Vidal et al. 2018), or barley and pea (type B2; Hauggaard-Nielsen et al. 2009) have phenologies similar enough to be harvested at the same time. Thus, the sowing arrangements most often used are within-row and alternate-row mixtures, which create close plant–plant interactions.

## 2.2 Relative importance of ecological processes in the three types of annual crop mixtures

The ability of crop mixtures to use abiotic resources depends in part on several ecological processes (reviewed by Brooker et al. 2015; Barot et al. 2017) which often

overlap throughout the growing cycle. Niche complementarities (Macarthur and Levins 1967) occur through niche differentiation over time (Yu et al. 2015; Zhang et al. 2017; Dong et al. 2018) and/or space (Zhang et al. 2014; Montazeaud et al. 2017) and by using different forms of the same resource, as illustrated for nitrogen (N) uptake by cereal–legume mixtures (e.g., Hauggaard-Nielsen et al. 2009) or for the preferential use of nitrate or ammonium (Boudsocq et al. 2012); phenotypic plasticity (Nicotra et al. 2010) which can contribute greatly to niche complementarity (Callaway et al. 2003; Ashton et al. 2010; Zhu et al. 2015), e.g., root traits are extremely plastic (Pagès 2011) and can behave differently when growing in mixtures (e.g., Gonkhamdee et al. 2010 for maize intercropped with rubber tree) so that if models exclude plastic responses in root development as an emergent property, simulating the distribution of roots of crop mixtures based on that of single crops could be irrelevant; and positive interactions (i.e., facilitation, Callaway 1995), e.g., one species can increase phosphorous (P) availability

in its rhizosphere and ultimately in the rhizosphere of a neighboring species, provided that the two root systems are intermingled (Gunes et al. 2007; Betencourt et al. 2012; Li et al. 2014; Bargaz et al. 2017). In addition, the selection effect, also named the sampling effect (Loreau and Hector 2001; Barot et al. 2017), could also lead to overyielding. This is due to the fact that some genotypes or species grow particularly well in given cropping conditions. Thus, simulation models taken into account plant phenology and autecology would be able to consider and quantify this effect.

These ecological processes occur at different spatial scales and with different intensities depending on cropping conditions. In a given environment, their relative importance varies according to the type of annual crop mixture, because spatio-temporal arrangement determines the immediate neighborhood of a target plant (Stoll and Weiner 2000; Table 1). Regardless of the crop mixture type, and even for sole crops, phenotypic plasticity is crucial for adapting to the local environment and its constraints. The three types of crop mixtures can be considered a logical sequence (type A → type B → type C) by successively adding processes and complexity to account for.

In mixtures with homogeneous genotypes (type A), all individual plants experience approximately the same local abiotic environment, ignoring (i) spatial heterogeneity caused by emergence conditions and pests and (ii) border effects, such as those of surrounding hedges or grass strips. For type A crop mixtures, above- and belowground competition may be nearly the same for all plants and depend on the density of a given crop in a given environment. In general, no facilitation or niche complementarity for abiotic resources can occur. However, facilitation-like mechanisms can occur through a decrease in pests due to contrasting degrees of resistance (Barot et al. 2017). Predicting this specific process and its dynamics would require distinguishing each plant.

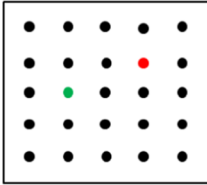
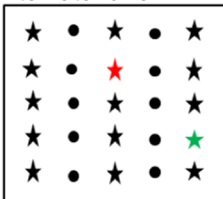
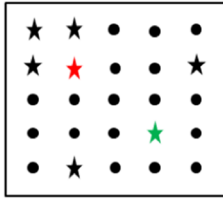
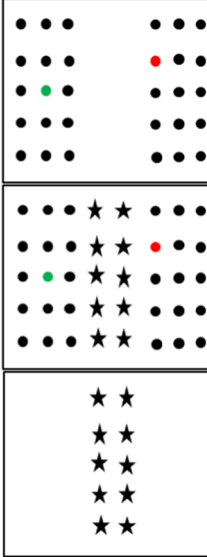
Next in the sequence, in alternate-row and within-row mixtures (type B), crops with contrasting morphology are closely mixed. Therefore, above- and belowground interactions (i.e., competition and facilitation) and complementarity for resource use are important for predicting crop mixture functioning and performances, such as yield and other ecosystem services. For example, modeling belowground niche complementarity in space, Postma and Lynch (2012) predicted that in closely spaced mixtures of maize-bean-squash (type B), different root architectures (Fig. 3) allow crop mixtures to forage for nutrients throughout the soil profile more efficiently than a single genotype/species. The functioning of a target plant is determined by its neighborhood, with a high probability of being close to a neighbor from another species or genotype according to the relative density of the plant

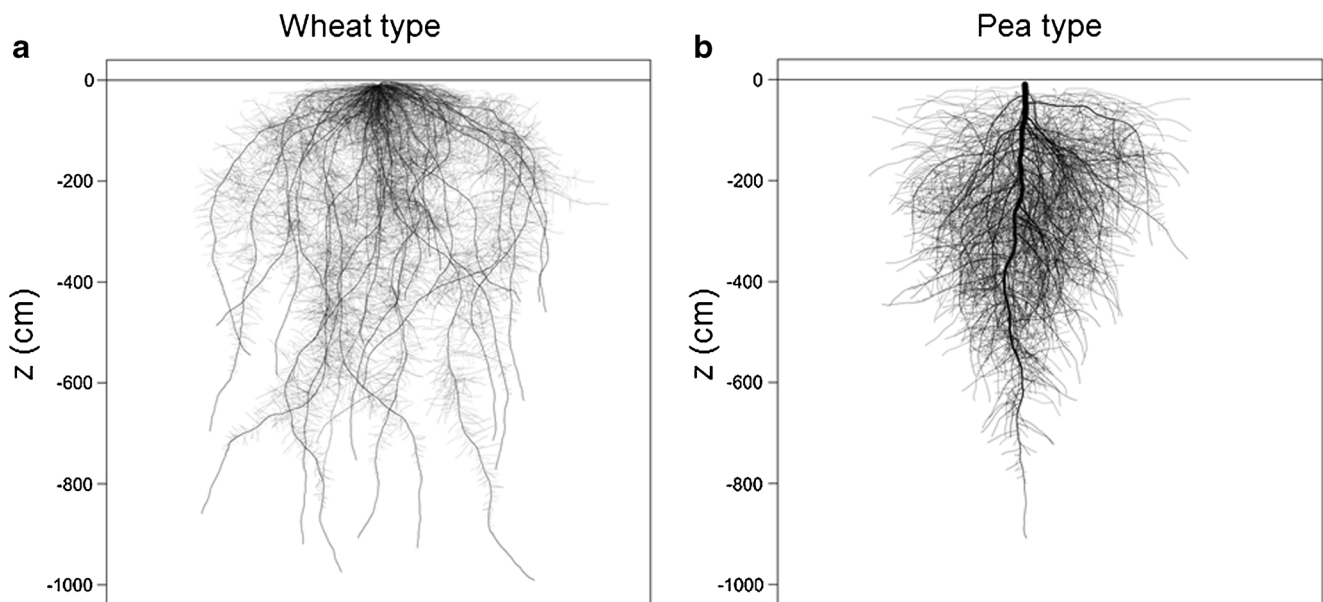
components. Alternate-row mixtures with contrasting degrees of resistance strengthen facilitation against pests, since non-host crop rows serve as physical barriers to pest movement between host rows (Finckh et al. 2000). The scale (individual or population) at which these ecological processes should be considered, however, depends on the specific issue addressed.

The main additional feature that distinguishes relay-strip crop mixtures (type C) from the other two types is the strong border-row effect between two strips, due to interactions between the two crops as they grow. Competition for light (Yang et al. 2017) or belowground resources (Lv et al. 2014) can predominate, depending on the plant components, their water and nutrient status, and their spatio-temporal arrangement (e.g., number of rows, orientation). However, it is assumed that belowground facilitation and complementarity for N, which occur at local scales, can have a strong influence only at the border between two strips, i.e., the wider the strip, the lower the effects. For belowground resources, especially P, the strongest effect of increased P use in faba bean–maize relay-strip intercrops was linked to decomposition of roots of the species harvested first (Li et al. 2003) and to slight direct facilitation during co-growth. As Raynaud et al. (2008) modeled, roots must be intimately mixed for P facilitation given the small scale of the underlying rhizosphere processes (Hinsinger et al. 2011). Temporal niche complementarity is the main ecological process involved in relay-strip crop mixtures (Yu et al. 2015). Several studies showed that wheat overyielding in wheat–maize relay-strip intercrops was due mainly to increased growth of border-row plants, while inner-row plants behaved like those in wheat sole crops (Knörzner et al. 2010; Gou et al. 2016; Zhu et al. 2016). Wheat border rows received more light than inner rows before maize emerged, resulting in greater light use efficiency in crop mixtures than in sole crops. This highlights the need to consider the spatial pattern of relay-strip crop mixtures explicitly.

Whatever the crop mixture type, the local environment determines which functional complementarities between plants sustain growth and production under resource limitation. For instance, when N, water, or P is the main limiting resource, then complementarity for N use between legume and non-legume species (Hauggaard-Nielsen et al. 2009), for water use between C3 and C4 species (Mao et al. 2012), or for P use between P- and non-P-mobilizing species (Li et al. 2014) becomes the most advantageous, respectively. This first environmental filter (Keddy 1992) guides the choice of the mixture components and occurs at the species level and not the genotype level because it is influenced by general properties of a species that are shared by all of its genotypes, thus defining coarse plant functional types (Ustin and Gamon 2010).

**Table 1** Main ecological processes involved in abiotic resource partitioning in the three types of annual crop mixtures (types A, B, C) in a given environment. Their occurrence in the three types of crop mixtures and the main influencing factors are described. For the schematic representation, Crop 1 = black circle, Crop 2 = black star, Target plant 1 = green, and Target plant 2 = red

		Type A	Type B	Type C
Above- and belowground competition (intra- and interspecific / genotypes)	occurrence	x	x	x
	influenced by	Sowing density.	Sowing density, proportion of each mixture component, and competitive ability (Goldberg 1990).	Sowing density, proportion of each mixture component, competitive ability, and row position in a given strip.
Phenotypic plasticity	occurrence	x	x	x
	influenced by	Each mixture component sensitivity to the environment, their response range, and direct neighborhood.		
Spatial complementarity for belowground resources	occurrence		x	x
	influenced by		Root system architecture of each mixture component, and direct neighborhood.	
Complementarity for resource use	occurrence		x	x
	influenced by		Functional types characterizing each mixture component.	
Facilitation	occurrence		x	x
	influenced by		Functional types characterizing each mixture component, and the direct neighborhood.	
Representation from a target plant point of view (direct neighborhood)		A given plant is surrounded by plants with similar characteristics. All plants encounter almost the same environment and neighborhood, <i>i.e.</i> one average plant can be considered as representative of the whole crop. This is true except for plants located at the border of the field.	Each plant 1 is at least surrounded by one plant 2 in the case of alternate row mixtures and with a high probability in the case of within-row mixtures. This probability depends on the relative proportion of the two plant types.	The direct neighborhood of a target plant 1 growing in a given row can be either plant 1 or plant 2 depending on the position of the row within a given strip. Plants growing on the border rows experience a reduced neighborhood during part of their growing cycle.
Schematic representation			<p>Alternate rows</p>  <p>Within-row</p> 	<p>time</p> 



**Fig. 3** Illustration of two root systems with contrasting architecture: **a** wheat, with a branching root system, and **b** pea, with a taproot system, simulated with the root model ArchiSimple (Pagès et al. 2014)

### 3 General features of current modeling approaches

#### 3.1 Crop models

Crop models were developed to simulate soil–plant–atmosphere interactions by considering environmental variables (climate, soil, and management practices), species or genotype-specific traits, and their response to the environment (reviewed by Boote et al. 2013; Jeuffroy et al. 2014 for sole crops). They accurately simulate observed genotype–environment interactions for a range of genotypes in multi-environment trials (e.g., for sunflower, Casadebaig et al. 2016a). One main strength of these models is that they consider the effects of several abiotic stresses (e.g., water, N, temperature) and their interactions on crop performance (Fig. 4 illustrates how a variation in plant trait values impacts crop yield, in a large diversity of cropping conditions), providing a quantitative estimate at a relevant scale (e.g., yield  $\text{ha}^{-1}$ ). Therefore, they are potentially relevant for addressing the performance of crop mixtures compared to that of sole crops under a variety of environmental conditions, such as drought or nutrient limitations (Hughes and Stachowicz 2004; Holmgren and Scheffer 2010; Hautier et al. 2014).

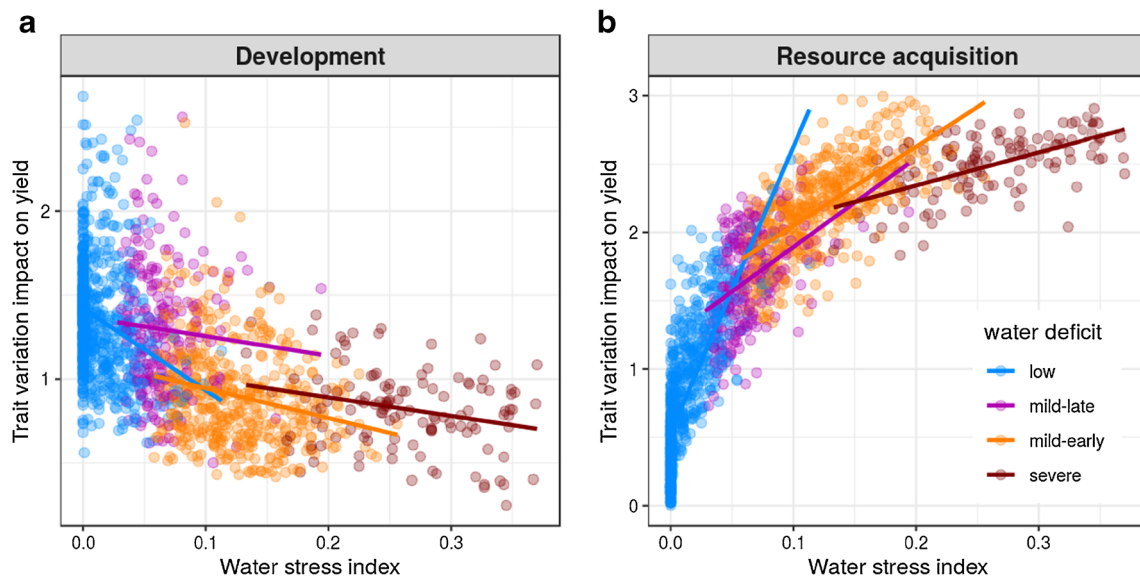
Most crop models, however, initially simulated only sole crops, assuming a continuous canopy across the field and often ignoring spatial heterogeneity. Many models represent the entire canopy as a single leaf (in “big leaf” models) and use the Beer–Lambert law to simulate its light interception (Sinoquet et al. 1990; Monsi and Saeki 2005). Some models represent vertical spatial heterogeneity by distinguishing several canopy layers (e.g., SUNFLO, Casadebaig et al. 2011) or using leaf-to-canopy approaches for light interception and carbon assimilation

(Boote et al. 2013). The underlying assumption that the canopy is homogeneous vertically and continuous horizontally is often a robust approach to simulate sole crop growth (Chenu et al. 2017). Competition is influenced by density (Evers et al. 2006; Baccar et al. 2011; Dombusch et al. 2011), with the caveat that density dependence is fixed or weakly parameterized in many crop models (e.g., Brisson et al. 2008).

An initial strategy to simulate crop mixtures involved modifying how one crop senses its environment by altering environmental variables according to predictions of another sole crop model (i.e., successively running individual sole crop models; Monzon et al. 2007) or external calculations (Knörzer et al. 2010; Munz et al. 2014). After calculating the impact of crop 1 on the environment, the modified environmental variables are used to simulate crop 2. This methodology is used when the study focuses only on crop 2, with no retroaction on crop 1.

A few crop models, such as APSIM (Agricultural Production Systems sIMulator; Holzworth et al. 2014), CROPSYST (Cropping Systems Simulation Model; Singh et al. 2013), FASSET (Farm ASSEssment Tool; Berntsen et al. 2004), and STICS (Simulateur multIdisciplinaire pour les Cultures Standard; Brisson et al. 2004), added sub-modules to represent competition for abiotic resources by annual crop mixtures (reviewed by Chimonyo et al. 2015). They assumed that the canopy is composed of two species instead of one, either ignoring the spatial configuration of the two crops’ canopies (i.e., by simulating a shared canopy; APSIM, CROPSYST, FASSET) or explicitly representing it. The latter approach, restricted to situations in which the two crops were side by side (e.g., in alternate rows), was used only in a few models, e.g., STICS. These models used a





**Fig. 4** Sensitivity index of crop yield for selected traits involved in crop development (a) and resource acquisition (b) relative to seasonal water stress indices. Crop modeling and simulation can be used to quantify in silico the impact of a variation in plant traits on crop yield, for diverse cropping conditions. The results from a sensitivity analysis are illustrated for a sub-set of two traits for the wheat crop in Australia: the thermal time required to reach floral initiation (“Development”) and the water

extractability by roots (“Resource acquisition”). Points correspond to sampled cropping conditions (1500 combinations of sites  $\times$  year  $\times$  management options). Colors indicate representative drought-pattern environment types occurring in the Australian wheat belt (Chenu et al. 2013). Lines represent linear regressions fitted by environment types. Source: Casadebaig et al. (2016b)

“hedgerow” approach: a 2D representation of row geometry to calculate light interception by row crop canopies. Simulation of an alternate-row crop mixture of leek and celery using the two approaches (homogeneous horizontal leaf area distribution vs. row geometry) demonstrated, however, that they could simulate light partitioning equally well (INTERCOM, Baumann et al. 2002). These results indicate the need for more frequent assessment of the advantages of making models more complex. All these models seem to simulate canopy growth, particularly leaf area index, less accurately, but simulate nutrient cycling well (Berntsen et al. 2004; Corre-Hellou et al. 2007, 2009).

More recently, crop models were specifically developed to simulate annual crop mixtures in alternate strips (Wang et al. 2015; Gou et al. 2017b; Liu et al. 2017), with particular focus on the temporal sequence of their phenological phases. These models distinguish the phases during which plant components grow separately (equivalent to a sole crop, but interspersed with strips of empty space due to the space needed for the companion species) from phases of co-growth (with two plant species being present simultaneously). These models calculate the light partitioning between the plant components in the intercrop based on a mathematical model that takes into account the block structure and strip-path geometry of the crop mixture (Goudriaan 1977; Pronk et al. 2003). They give quite different results than a standard Beer–Lambert law for light interception in a mixed canopy that does not take the block structure and strip-way geometry into account (Gou et al. 2017b). They thus represent temporal niche complementarity

for light use, but the border-row effect is ignored because each strip is considered as homogeneous cover, i.e., no distinction between inner and border rows of a strip.

While light competition is always represented (appropriately or not) in models of crop mixtures, competition for below-ground resources taken up by roots is not, which remains a main weakness of these models. Belowground competition can have a larger effect than aboveground competition (Wilson 1988), especially when inputs decrease. Most crop models are based on the Monteith equation (1977), which considers intercepted light the driving force of crop growth. However, most crop models do not simulate root biomass or density in soil layers and represent soil and its spatial heterogeneity coarsely. Consequently, direct interactions between rooting systems are virtually ignored in some crop models adapted for annual crop mixtures (e.g., Gou et al. 2017b) but can be accounted for indirectly. Root systems can be represented with species- or genotype-specific parameters, such as root depth and density distribution throughout the soil profile, e.g., STICS or BISWAT (Bertrand et al. 2018). Thus, soil resources taken up by one crop change the abiotic stress and thus the specific growth response of the second crop. When the soil is represented as several layers, responses can be simulated as preferential root growth in soil layers with higher water or nutrient content or as an increase in other processes, such as biological  $N_2$  fixation for legumes instead of soil mineral N uptake. In this way, basic spatial niche complementarity for water and N between two plant components can be indirectly simulated.

### 3.2 Individual-based models

IBMs of plant communities have long been useful in ecology to test theories and hypotheses (Huston et al. 1988; Railsback and Grimm 2012; Evers et al. 2018a). They include population dynamics models, with simulations of annual (e.g., Zhu et al. 2015) or multi-annual growth cycles (and thus multiple generations of plants, e.g., Colbach et al. 2014a). IBMs represent populations made up of individuals, usually spatially explicit, that may differ from one another. Most IBMs explicitly represent local interactions, individual variability, and the heterogeneity of resource partitioning within the field and the crop (reviewed by Grimm and Railsback 2005; Berger et al. 2008; Vos et al. 2010; Dunbabin et al. 2013). Plant architecture is represented at varying levels of detail (e.g., sub-organ, organ, phytomer, axis, and plant for shoot architecture; root segment and root system for root architecture), with the smallest-scale IBMs integrating the topological and spatial organization of a plant's modular structure, i.e., functional-structural plant models (FSPMs, Fourcaud et al. 2008; Vos et al. 2010; DeJong et al. 2011). Regardless of the degree of detail used to represent the plant, IBMs (i) require many parameters, which makes it difficult to generalize their use, (ii) require laborious data collection, and (iii) have high computational cost. Moreover, a recurring difficulty in modeling concerns the scaling up from one hierarchical level of organization to another and whether such levels are strongly identified in biological systems (Potochnik and McGill 2012). Given the complexity of most IBMs, they cannot be easily scaled up to address issues at large spatial scales (larger than the plot level) over long periods of time (Purves et al. 2008). Consequently, a great difficulty lies, for example, in scaling up from an IBM to an estimate of annual crop yield.

IBMs have been used in forestry and agronomy to predict dynamics of cultivated plant communities, such as multi-species grasslands (Soussana et al. 2012; Louarn et al. 2014; Durand et al. 2016; Faverjon et al. 2018), mixed forests (Liu and Ashton 1995; Chave 1999; Pérot and Picard 2012), and crop-weed mixtures (Colbach et al. 2014b; Evers and Bastiaans 2016; Renton and Chauhan 2017). IBMs have rarely been applied to annual crop mixtures, however, in part because so few IBMs exist that can simulate them. We identified three IBMs (Garcia-Barrios et al. 2001; Potting et al. 2005; FLORSYS, Colbach et al. 2014b) that simulate only aboveground interactions for light and four FSPMs that simulate only above- (Fig. 5; Barillot et al. 2014b; Zhu et al. 2015) or belowground (SimRoot, Postma and Lynch 2012; Min3P-ArchiSimple, Gérard et al. 2018) compartments, even though FSPMs have considerable potential to simulate species mixtures (Evers et al. 2018b). Aboveground FSPMs mainly address competition for light, but recent efforts have been made to include other processes, e.g., Barillot et al. (2018) used a comprehensive FSPM to assess C-N acquisition, allocation,

and grain yield of theoretical wheat genotype mixtures of plants that only differ in leaf inclination.

While all IBMs account to some extent for plant geometry (as a volume or surface), IBMs that are FSPMs also represent plant topology and detailed 3D architecture explicitly. Once plant geometry is calculated from input parameters (e.g., phyllotaxis, leaf and tiller angles and curvature), microclimate and phylloclimate can be calculated at the organ scale rather than at the plant scale (Chelle 2005).

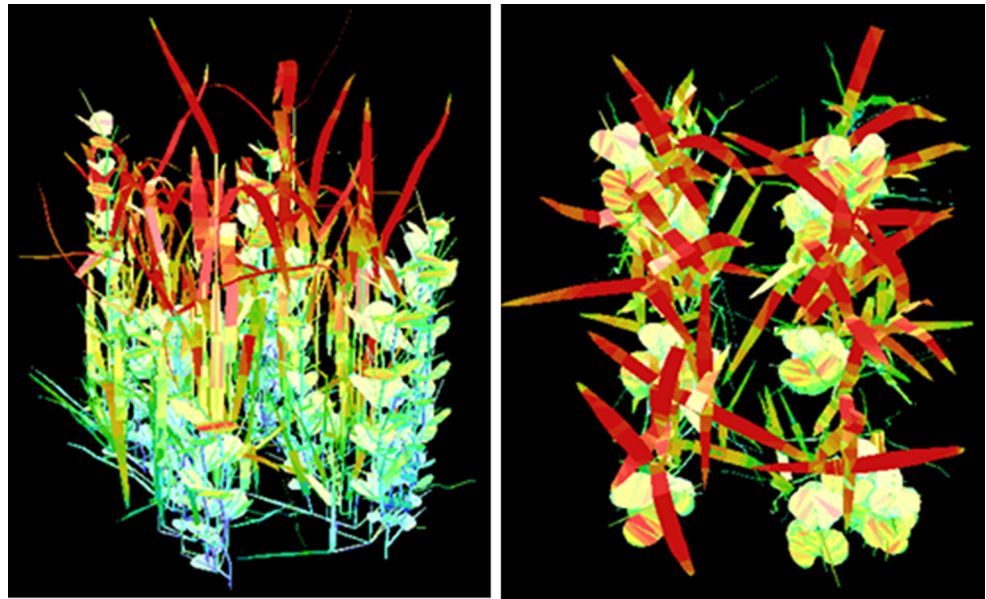
Resource partitioning between plants is more sophisticated in IBMs than in crop models, with the degree of complexity often linked to the spatial resolution of the canopy and root system. For instance, light partitioning can be simulated (i) at the voxel (3D pixel) scale in voxel-based IBMs that then use the Beer-Lambert law at a very fine scale of a few centimeters to meet the law's assumptions of homogeneous cover (Sinoquet et al. 2001; Munier-Jolain et al. 2013) or (ii) by connecting the plant model to a surface-based radiative transfer sub-model to predict light balance (transmission and absorption) inside the canopy at the organ scale (Chelle and Andrieu 1999; Röhrig et al. 1999; Barillot et al. 2014b).

As crop models, most IBMs represent belowground interactions inadequately. Except for belowground IBMs, no belowground interactions, even indirect, are included in current IBMs that simulate annual crop mixtures. Thus, the belowground IBMs applied to crop mixtures are apparently limited to a few of the FSPMs reviewed by Dunbabin et al. (2013). Most of them focus on root architecture and its impact on resource partitioning (e.g., SimRoot, Postma and Lynch 2012), leaving aside for the moment what relates to soil biota such as mycorrhizae and bacteria. More recently, the model Min3P-ArchiSimple (Gérard et al. 2017), which combines the architectural root IBM ArchiSimple (Pagès et al. 2014) and the soil reactive-transport model Min3P (Gérard et al. 2008), was used to simulate pH changes in the root zone of two representative intercropped legumes and cereals (Gérard et al. 2018).

More particularly, aboveground FSPMs ignore belowground interactions (and vice versa for belowground FSPMs), whereas the link between above- and belowground processes underlies many benefits of crop mixtures; however, predicting mixture performance based on both above- and belowground resource partitioning is an objective of the current European Union project ReMIX (<https://www.remix-intercrops.eu/>).

Few IBMs, however, include some crop model modules, thus connecting a detailed representation of aboveground plant parts to simpler representations of roots and soil, which can be useful when competition for light is strong or spatially heterogeneous and competition for soil resources is restricted to mobile elements (i.e., water, mineral N) or negligible compared to competition for light. For instance, soil modules of the crop model STICS are used in FLORSYS to predict soil N

**Fig. 5** Illustrations of (left) horizontal and (right) vertical views of a virtual wheat–pea mixture. The color gradient (from blue to red) indicates the amount of light intercepted by plant organs. Source: Barillot (2012)



and water which are then uptake by individual plants, with a feedback enabling to reinitialize the soil characteristics for the day after. The opposite is observed for the model SPACSYS (Wu et al. 2007; Zhang et al. 2016), which represents canopy and soil functioning in the same way as crop models but uses an additional IBM sub-module to represent root architecture.

## 4 Using modeling to study annual crop mixtures

### 4.1 Different models for different purposes

Several recent reviews suggested that models simulating heterogeneous annual crop mixtures could be improved by representing complex and dynamic spatio-temporal interactions among plants, as well as phenotypic plasticity (Malézieux et al. 2009; Fletcher et al. 2016). This implicitly suggests that IBMs are more suitable than crop models for simulating crop mixtures. Making models more complex has a cost, however, and models of different resolutions are designed to address different issues. Consequently, several models that differ in the level of detail need to be used to study a given system (Evans et al. 2013; Li-li et al. 2015), with a gradient from empirical to more mechanistic models, depending on the underlying objective (Passioura 1996). Consequently, the strengths and weaknesses of crop models and IBMs are inherently complementary. Hereafter, the main issues of annual crop mixtures that each modeling approach can currently address are illustrated, when possible, with examples of model applications. These issues are related to annual crop mixtures agricultural management and to the traits

and the relative importance of ecological processes involved in crop mixtures performance.

### 4.2 Suitable management for annual crop mixtures: choosing species, genotypes, sowing date and density, and spatial arrangement

The spatio-temporal arrangement of annual crop mixtures influences crop yield directly through resource partitioning and indirectly through regulation of pests (Ratnadass et al. 2012; Boudreau 2013; Hatt et al. 2018). This issue is partially addressed by crop models and IBMs that simulate agricultural practices.

None of these crop models simulates more than two crops growing together, which is the most common situation for annual crop mixtures on farms. The model chosen must represent the spatial arrangement of the crop mixture simulated (closely mixed vs. relay-strip). In contrast, IBMs enable theoretical testing of all species and genotype combinations, regardless of the number of plant components and their spatial arrangement, under the condition that the IBMs represent the functions and specific characteristics of the mixed species or genotypes.

These models do not include rules to decide which species and genotypes to combine for a given soil and climate. This decision can be made by simulating many different agronomic situations to identify potential species/genotype combinations. This is possible only when the model has a minimum degree of genericity, which is the case for certain crop models (e.g., STICS and APSIM parameterize 15 and 24 annual cash crops, respectively, with genotype-specific parameterization for phenology) and IBMs (e.g., FLORSYS parameterizes 14 annual cash crops, with genotype-specific parameterization for

wheat, field bean and pea). However, among IBMs, most FSPMs are species-specific.

In addition to sowing dates and densities, which most models usually represent, a specific strength of most crop models is that they consider other agricultural practices, such as fertilization, tillage, and irrigation; IBMs typically do not consider these practices. Thus, crop models have been used mainly to test the influence of a variety of agricultural practices and cropping conditions on the relative performance (yield quantity and quality) and resource-use efficiency of annual crop mixtures compared to their corresponding sole crops. For instance, simulations were performed to quantify impacts of crop mixture sowing densities and dates (Corre-Hellou et al. 2009; Fayaud et al. 2014) and to test fertilization options (Corre-Hellou et al. 2007, 2009) and water regimes (Chimonyo et al. 2016). Few crop models have been used to simulate annual crop mixtures in more integrated farming systems that have planning horizons longer than 1 year. Launay et al. (2009) used STICS to assess bi-specific pea–barley intercrop sown in alternate rows to improve N use efficiency by using sowing dates and densities and crop rotation (preceding crop and soil). Crop models that include a soil component and N residue management can simulate carbon and N cycles and thus indirect N transfer through decomposition and mineralization of plant residues, which could have a positive long-term effect, e.g., Fletcher et al. (2015) demonstrated that N fixation in a wheat–pea intercrop can lead to yield improvements in subsequent wheat crops.

For the additional border-row effect in relay-strip crop mixtures, simulations were performed to quantify the effect of strip width (defined by the number of rows and inter-row distance) on light use efficiency and yield of wheat–maize intercrops (Wang et al. 2015; Gou et al. 2017b). The effect of diverse crop phenology on crop yield in wheat–soybean intercrops was also evaluated under a variety of soil and climate conditions (Monzon et al. 2007).

Even though simulation studies illustrate the relevance and ability of crop models to simulate annual crop mixtures, these models are often not evaluated with independent data (e.g., Corre-Hellou et al. 2007, 2009) and thus might be over-fitted to calibration data (e.g., Chimonyo et al. 2016), which is a common problem in modeling (Sinclair and Seligman 2000; Seidel et al. 2018).

Crop models usually do not represent multiple biotic stresses, which is a clear limitation to using them to simulate low-input or organic cropping systems. One way to represent plant–pest interactions is to combine crop models with pest models, as is done for sole crops (Boote et al. 1983; Robert et al. 2004). Generally, IBMs consider biotic stresses. For example, an explicit 3D plant canopy simulated by an FSPM can help quantify the influence of the mixture on pest dynamics in homogeneous genotype mixture (e.g., Gigot et al. 2014 for wheat genotype mixture); Colbach et al. (2014b) used

FLORSYS to test several crop mixtures as a function of species choice, sowing date and arrangement, focusing on weed-induced yield loss and weed biomass during the test year and the following 10 years; Potting et al. (2005) developed a simple agent-based IBM to study effects of the proportion of a sensitive crop vs. a non-sensitive crop and the spatial arrangement of the resulting mixture to predict the behavior and dynamics of herbivorous insects.

### 4.3 Plant traits involved in annual crop mixture performance

Breeding programs focus on optimizing agronomic performance (e.g., yield quantity and quality, pest resistance, resource use efficiency) in a sole crop context; however, the performance-related traits of mixtures might differ due to specific plant–plant interactions and complementarities (Litrico and Violle 2015). IBMs that are FSPMs can often identify these traits.

Several descriptive FSPMs have been developed with this objective, i.e., to replicate the plant structure (shoots or roots) observed from specific experimental measurements. Due to their detailed structural representation, these models provide insights into physical interactions between plant structure and usually a single environmental factor such as light, water, N, or pests. For instance, to simulate closely spaced wheat–pea mixtures and determine the influence of several architectural traits on light partitioning, Barillot et al. (2014b) used a descriptive FSPM composed of a wheat model (ADEL-Wheat, Fournier et al. 2003), a pea model (L-Pea, Barillot et al. 2014b), and a radiative balance model (CARIBU, Chelle and Andrieu 1998). More specifically, their study quantified the relative influence of leaf area index (influenced by the number of branches/tillers), plant height (reflected by internode length), and leaf geometry (reflected by leaf angle) on the mixture's light interception. Similarly, but for relay-strip wheat–maize intercrops, Zhu et al. (2015) performed simulations to identify the relative importance of phenotypic plasticity in key architectural traits (e.g., tillering, leaf size, leaf azimuth, leaf angle) vs. crop structure in light interception.

For the root system, the model SimRoot was used to simulate closely spaced dense mixtures of maize–bean–squash (Postma and Lynch 2012) to analyze the influence of architectural root traits and complementarity on crop mixture functioning and to focus on the importance of biological rhizosphere processes as a function of nutrient limitation (N, P, K).

These findings could help breeders prioritize traits and determine the data most essential to collect in field experiments. Complex traits such as height that are used in more integrated models are separated into finer traits in FSPMs, which helps to understand more mechanistically which traits are involved in resource partitioning and thus in plant performance.

Due to the descriptive nature of these models, emergent effects (such as plasticity) of crop mixtures on crop performance cannot be simulated because plant growth and development are inferred from experiments (e.g., no physiological processes are behind architectural plasticity as plasticity is hard-coded in the model), meaning that a new set of parameters is required for each situation.

#### 4.4 Representation and relative importance of ecological processes

Ecological processes, such as phenotypic plasticity, facilitation, and competition, are included in models that use descriptive functions (usually crop models) or dose–response type relationships (usually IBMs). In the latter, ecological processes are emergent properties of the model, i.e., the result of modeling plants' resource acquisition and signaling. Depending on how ecological processes are represented (descriptive vs. emergent), parameterization conditions greatly influence model accuracy and genericity.

Since crop models tend to use empirical relationships to represent ecological processes, using model components such as plant-related parameters developed for a sole crop might have limitations (e.g., Baumann et al. 2002; Corre-Hellou et al. 2009), and their values may change in crop mixtures due to plant–plant interactions. Consequently, parameters of model components should be estimated or measured for mixtures. Although IBMs are also parameterized from isolated plants or sole crops (except by Zhu et al. 2015), the parameterization conditions are less important since these ecological processes are supposed to be emergent properties that do not depend on the presence or identity of neighboring plants. Nevertheless, since all models are simplifications, some formalisms remain empirical, and the extent to which emergent properties are robust is often unclear, especially when simulating a variety of agricultural conditions. Thus, in addition to evaluating model accuracy for main output variables, model evaluation should also focus on ecological processes themselves. For instance, for sole crops, Casadebaig et al. (2011) used standard accuracy metrics to evaluate a crop model and showed that while the model did simulate phenotypic plasticity, its intensity was weaker than that observed in the experimental dataset.

Crop models cannot mimic phenotypic plasticity of each species (or genotype) within the mixture, but some are able to simulate cover plasticity as an emergent property of crop mixtures due to light, water, or nutrient interactions and their effects on crop growth. However, improved knowledge of the underlying processes is required, as are specific experiments to identify these mechanisms (Barot et al. 2017). This could provide lower and upper bounds of plastic functional traits that correspond to crop model parameters. Assuming that the relevant functional traits (relevant according to the

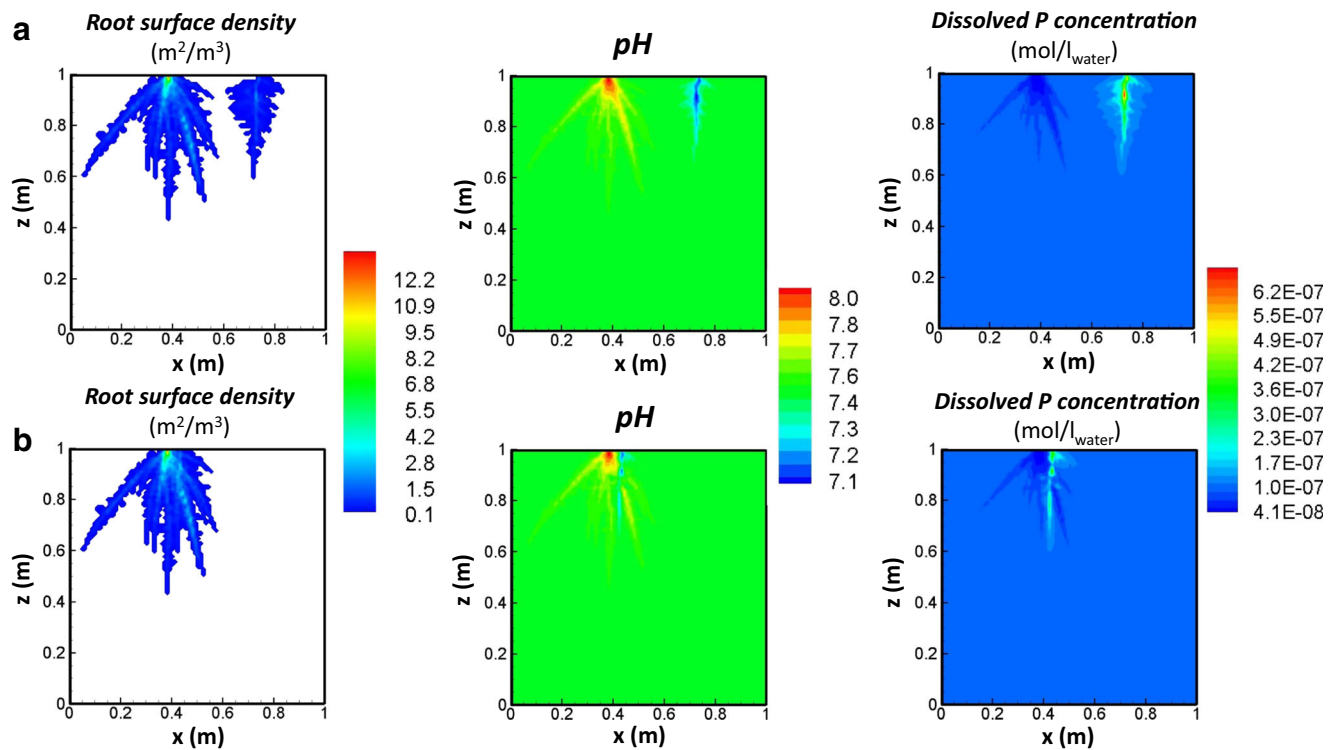
issue addressed by the model) are known, that their range is quantified (phenotypic plasticity), and that they correspond to crop model parameters, the way each species/genotype expresses phenotypic plasticity could be determined by optimizing the algorithms applied to the model in the chosen environments.

More mechanistic IBMs can represent “generic” responses of plants to their environment (e.g., photosynthesis to light, or leaf growth to temperature; Barillot et al. 2016 illustrate this for wheat). In these IBMs, plant plasticity in response to contrasting environments is an emergent property. Current IBMs do not represent the functions responsible for belowground facilitation for abiotic resources, as previously defined. Some FSPMs are promising tools to simulate belowground facilitation mechanistically. For instance, the model Min3P-ArchiSimple was used to simulate adjacent legume and cereal root systems with varying distances between plants (35 and 5 cm). Preliminary results highlighted that dissolved P increased and pH decreased in the cereal's rhizosphere, while the opposite trend occurred in the legume's rhizosphere (Fig. 6), depending on the distance between the two species (Gérard et al. 2018). Similarly, facilitation for P or other rhizosphere processes could be quantified based on soil conditions. Currently, only theoretical applications have been performed.

Mechanistic IBMs are useful to identify the relative importance of ecological processes in the functioning and performance of crop mixtures. For instance, Zhu et al. (2015) simulated a relay-strip crop mixture of wheat and maize with or without plasticity, based on empirical values of traits. The results indicated that light interception efficiency was 23% higher in crop mixtures than in sole crops, and within the 23%, 64% was due to plasticity, and only 36% resulted from crop structure. Thus, a model that does not explicitly simulate plasticity would fail to capture the main benefits of crop mixtures. Similarly, Postma and Lynch (2012) illustrated that the benefits of closely spaced mixtures for N uptake and biomass production emerged only when root architecture was represented because they depend on spatial complementarity among roots. Likewise, modeling could help to disentangle and better analyze and understand the relative importance of the complementarity and “selection effects” in overyielding of annual crop mixtures, which remains a research perspective not yet addressed.

#### 4.5 Complementarity of the modeling approaches

The two modeling approaches are complementary, and having suitable modeling infrastructure can increase their use. As an example, IBMs could be used to assert certain empirical assumptions used in crop models. Barillot et al. (2011) illustrated a reassuring example in a study that assessed the “homogeneous canopy” assumption for mixtures. The authors



**Fig. 6** Results of the Min3P-ArchiSimple model used to simulate two species (cereal and legume) planted in an alkaline soil (Gérard et al. 2017). The example represents 60 days of simulation and a planting distance of **a** 35 cm and **b** 5 cm

used simulation to show that the “turbid medium” analogy could be used successfully for a wide range of crop mixtures. More detailed representation (more vertical layers or 3D description) of the canopy, however, slightly improved the prediction of light interception efficiency of mixtures with vertical stratification and overlapping foliage. This study validates the assumption of the “big leaf” approach used in all crop models.

High expectations of IBMs are based on their ability to quantify the contribution of ecological processes or the importance of given functional traits to crop mixture functioning, which could encourage their use in crop models. When needed, important processes highlighted from IBMs could be summarized by functional relationships (Escobar-Gutiérrez et al. 2009) and be added to crop models. Therefore, IBMs could help improve crop models; however, as mentioned, to be parameterized and calibrated, they require many field data, which are time-consuming, difficult, or sometimes impossible to measure. A promising tool to render these models more usable is phenotyping of sole crops and crop mixtures (Bucksch et al. 2014). For instance, multi-genotype canopies of thousands of plants have been simulated in 3D from a phenotyping platform to estimate light interception and light use efficiency (Cabrera-Bosquet et al. 2016; Chen et al. 2018). Similarly, IBM calibrations obtained from isolated plant phenotyping were also shown able to predict the outcome of

competitive interactions between contrasting genotypes (Faverjon et al. 2018).

## 5 Conclusions and perspectives

We assert that models would be useful tools to understand and predict the functioning of annual crop mixtures and to help designing these agroecosystems, as a complement to field experiments, keeping in mind that experiments are crucial to improve and refine simulation models, whereas models are useful to guide experiments and test all possible plant-environment combinations (Craufurd et al. 2013; Reynolds et al. 2018; Rötter et al. 2018). However, modeling of annual crop mixtures is still in its infancy, and most modeling studies focus on model evaluation (Gou et al. 2017b) or the evaluation of sole crop models extended to crop mixtures, in particular for bi-specific mixture of annual crops (Corre-Hellou et al. 2009; Knörzer et al. 2010; Munz et al. 2014). Use of modeling remains limited in part because models are not yet completely operational, indicating the need to increase understanding of the ecological processes that influence crop mixture functioning before simulating them. A large scientific effort has focused on modeling sole crops. For instance, many modelers have focused on defining the most relevant parameters for sole crops (Martre et al. 2015; Casadebaig et al. 2016b), while little

insight exists on which parameters are particularly important for crop mixtures. A lot of work is now necessary in order to be able to identify the most relevant parameters for crop mixtures, including those linked to trait plasticity.

The complementarity between crop models and IBMs promotes stronger connection between communities of modelers and is a promising way to promote the use of annual crop mixtures in modern agriculture. Similarly, current simulation platforms are sufficiently developed to connect models. Some platforms, such as RECORD (Bergez et al. 2013) and APSIM (Holzworth et al. 2014), focus specifically on crop models (creating, connecting, simulating, and sharing them) and the cropping system scale. Other platforms, such as OpenAlea (Pradal et al. 2015) and GroIMP (Hemmerling et al. 2008), are designed for IBMs. These platforms facilitate connection and coupling of models, using shared objects to represent plant topology (Godin and Caraglio 1998; Balduzzi et al. 2017) and geometry at multiple scales (Pradal et al. 2009; Balduzzi et al. 2017). Recent developments in platform interoperability enable processes and architectural models to be shared between platforms (Long et al. 2018); however, this work is ongoing for crop model and IBM platforms. Some platforms (OpenAlea, CAPSIS) include models that focus on multi-species communities, such as forests or grasslands, and could provide insights to improve models of annual crop mixtures.

Modeling also requires access to multiple datasets, which promotes sharing of public data (Reichman et al. 2011) and using homogenized data at the local scale to generate common databases of agronomic and environmental data. These needs are not completely met by ecological databases such as TRY (Kattge et al. 2011), which are developed mainly for natural ecosystems and species. These perspectives could be viewed as good practice for model use and sharing (Wilson et al. 2017).

Finally, modeling of annual crop mixtures was discussed in this review at the field scale, focusing mainly on yield and crop mixture functioning; however, agriculture is more and more required to be multi-functional as a way of agroecology (Gaba et al. 2018). For this reason, future models will have to simulate impacts of annual crop mixtures on various ecosystem services and the field scale should be included in more integrated scales such as the rotation and the agricultural landscape, including long-term effects.

**Acknowledgements** The authors acknowledge support from European Union through the project H2020 ReMIX (Redesigning European cropping systems based on species mixtures, <https://www.remix-intercrops.eu/>) and from INRA Environment and Agronomy Division through the project IDEA (Intra- and interspecific diversity mixture in agriculture). We also thank Michael and Michelle Corson for their helpful comments and English revision and the two anonymous reviewers for their valuable comments.

## Compliance with ethical standards

**Conflict of interest** The authors declare that they have no conflict of interest.

**Publisher's note** Springer Nature remains neutral with regard to jurisdictional claims in published maps and institutional affiliations.

## References

- Affholder F, Tittone P, Corbeels M et al (2012) Ad hoc modeling in agronomy: what have we learned in the last 15 years? *Agron J* 104: 735. <https://doi.org/10.2134/agronj2011.0376>
- Altieri MA, Nicholls CI, Henao A, Lana MA (2015) Agroecology and the design of climate change-resilient farming systems. *Agron Sustain Dev* 35:869–890. <https://doi.org/10.1007/s13593-015-0285-2>
- Arim OJ, Waceke JW, Waudo SW, Kimenju JW (2006) Effects of *Canavalia ensiformis* and *Mucuna pruriens* intercrops on *Pratylenchus zeae* damage and yield of maize in subsistence agriculture. *Plant Soil* 284:243–251. <https://doi.org/10.1007/s11104-006-0053-9>
- Ashton IW, Miller AE, Bowman WD, Suding KN (2010) Niche complementarity due to plasticity in resource use: plant partitioning of chemical N forms. *Ecology* 91:3252–3260. <https://doi.org/10.1890/09-1849.1>
- Baccar R, Fournier C, Dornbusch T, Andrieu B, Gouache D, Robert C (2011) Modelling the effect of wheat canopy architecture as affected by sowing density on *Septoria tritici* epidemics using a coupled epidemic-virtual plant model. *Ann Bot* 108:1179–1194. <https://doi.org/10.1093/aob/mcr126>
- Balduzzi M, Binder BM, Bucksch A et al (2017) Reshaping plant biology: qualitative and quantitative descriptors for plant morphology. *Front Plant Sci* 8:177
- Bargaz A, Noyce GL, Fulthorpe R, Carlsson G, Furze JR, Jensen ES, Dhiba D, Isaac ME (2017) Species interactions enhance root allocation, microbial diversity and P acquisition in intercropped wheat and soybean under P deficiency. *Appl Soil Ecol* 120:179–188. <https://doi.org/10.1016/j.apsoil.2017.08.011>
- Barillot R (2012) Modélisation du partage de la lumière dans l'association blé—pois (*Triticum aestivum* L. - *Pisum sativum* L.). Une approche de type plante virtuelle. Université Nantes Angers Le Mans
- Barillot R, Chambon C, Andrieu B (2016) CN-wheat, a functional-structural model of carbon and nitrogen metabolism in wheat culms after anthesis. I. Model description. *Ann Bot* 118:997–1013. <https://doi.org/10.1093/aob/mcw143>
- Barillot R, Chambon C, Fournier C, Combes D, Pradal C, Andrieu B (2018) Investigation of complex canopies with a functional-structural plant model as exemplified by leaf inclination effect on the functioning of pure and mixed stands of wheat during grain filling. *Ann Bot*. <https://doi.org/10.1093/aob/mcy208>
- Barillot R, Combes D, Pineau S et al (2014a) Comparison of the morphogenesis of three genotypes of pea (*Pisum sativum*) grown in pure stands and wheat-based intercrops. *Aob Plants* 6:plu006. <https://doi.org/10.1093/aobpla/plu006>
- Barillot R, Escobar-Gutiérrez AJ, Fournier C, Huynh P, Combes D (2014b) Assessing the effects of architectural variations on light partitioning within virtual wheat-pea mixtures. *Ann Bot* 114:725–737. <https://doi.org/10.1093/aob/mcu099>
- Barillot R, Louarn G, Escobar-Gutiérrez AJ, Huynh P, Combes D (2011) How good is the turbid medium-based approach for accounting for light partitioning in contrasted grass–legume intercropping systems? *Ann Bot* 108:1013–1024. <https://doi.org/10.1093/aob/mcr199>

- Barot S, Allard V, Cantarel A, Enjalbert J, Gauffreteau A, Goldringer I, Lata JC, le Roux X, Niboyet A, Porcher E (2017) Designing mixtures of varieties for multifunctional agriculture with the help of ecology. A review. *Agron Sustain Dev* 37:13. <https://doi.org/10.1007/s13593-017-0418-x>
- Baumann DT, Bastiaans L, Goudriaan J, van Laar HH, Kropff MJ (2002) Analysing crop yield and plant quality in an intercropping system using an eco-physiological model for interplant competition. *Agric Syst* 73:173–203. [https://doi.org/10.1016/S0308-521X\(01\)00084-1](https://doi.org/10.1016/S0308-521X(01)00084-1)
- Baxevasos D, Tsialtas IT, Vlachostergios DN, Hadjigeorgiou I, Dordas C, Lithourgidis A (2017) Cultivar competitiveness in pea-oat intercrops under Mediterranean conditions. *Field Crop Res* 214:94–103. <https://doi.org/10.1016/j.fcr.2017.08.024>
- Bedoussac L, Journet E-P, Hauggaard-Nielsen H, Naudin C, Correhellou G, Jensen ES, Prieur L, Justes E (2015) Ecological principles underlying the increase of productivity achieved by cereal-grain legume intercrops in organic farming. A review. *Agron Sustain Dev* 35:911–935. <https://doi.org/10.1007/s13593-014-0277-7>
- Berger U, Piou C, Schifffers K, Grimm V (2008) Competition among plants: concepts, individual-based modelling approaches, and a proposal for a future research strategy. *Perspect Plant Ecol Evol Syst* 9: 121–135. <https://doi.org/10.1016/j.ppees.2007.11.002>
- Bergez J-E, Chabrier P, Gary C et al (2013) An open platform to build, evaluate and simulate integrated models of farming and agro-ecosystems. *Environ Model Softw* 39:39–49. <https://doi.org/10.1016/j.envsoft.2012.03.011>
- Bergez J-E, Colbach N, Crespo O et al (2010) Designing crop management systems by simulation. *Eur J Agron* 32:3–9. <https://doi.org/10.1016/j.eja.2009.06.001>
- Bergez J-E, Debaeke P, Deumier JM, Lacroix B, Leenhardt D, Leroy P, Wallach D (2001) MODERATO: an object-oriented decision tool for designing maize irrigation schedules. *Ecol Model* 137:43–60. [https://doi.org/10.1016/S0304-3800\(00\)00431-2](https://doi.org/10.1016/S0304-3800(00)00431-2)
- Berntsen J, Hauggaard-Nielsen H, Olesen JE, Petersen BM, Jensen ES, Thomsen A (2004) Modelling dry matter production and resource use in intercrops of pea and barley. *Field Crop Res* 88:69–83. <https://doi.org/10.1016/j.fcr.2003.11.012>
- Bertrand N, Roux S, Forey O et al (2018) Simulating plant water stress dynamics in a wide range of bi-specific agrosystems in a region using the BISWAT model. *Eur J Agron* 99:116–128. <https://doi.org/10.1016/j.eja.2018.06.001>
- Betencourt E, Duputel M, Colomb B et al (2012) Intercropping promotes the ability of durum wheat and chickpea to increase rhizosphere phosphorus availability in a low P soil. *Soil Biol Biochem* 46: 181–190. <https://doi.org/10.1016/j.soilbio.2011.11.015>
- Boote KJ, Jones JW, Mishoe JW, Berger RD (1983) Coupling pests to crop growth simulators to predict yield reductions. *Phytopathology* 73:1581–1587. <https://doi.org/10.1094/Phyto-73-1581>
- Boote KJ, Jones JW, White JW et al (2013) Putting mechanisms into crop production models. *Plant Cell Environ* 36:1658–1672. <https://doi.org/10.1111/pce.12119>
- Boudreau MA (2013) Diseases in intercropping systems. In: VanAlfen NK (ed) Annual review of phytopathology, Vol 51. pp 499–519
- Boudsocq S, Niboyet A, Lata JC et al (2012) Plant preference for ammonium versus nitrate: a neglected determinant of ecosystem functioning? *Am Nat* 180:60–69. <https://doi.org/10.1086/665997>
- Brisson N, Bussi ere F, Ozier-Lafontaine H et al (2004) Adaptation of the crop model STICS to intercropping. Theoretical basis and parameterisation. *Agronomie* 24:409–421. <https://doi.org/10.1051/agro:2004031>
- Brisson N, Gate P, Gouache D et al (2010) Why are wheat yields stagnating in Europe? A comprehensive data analysis for France. *Field Crop Res* 119:201–212. <https://doi.org/10.1016/j.fcr.2010.07.012>
- Brisson N, Launay M, Mary B, Beaudoin N (2008) Conceptual basis, formalisations and parameterization of the STICS crop model. Editions Quae
- Brooker RW, Bennett AE, Cong W-F, Daniell TJ, George TS, Hallett PD, Hawes C, Iannetta PPM, Jones HG, Karley AJ, Li L, McKenzie BM, Pakeaman RJ, Paterson E, Sch ob C, Shen J, Squire G, Watson CA, Zhang C, Zhang F, Zhang J, White PJ (2015) Improving intercropping: a synthesis of research in agronomy, plant physiology and ecology. *New Phytol* 206:107–117. <https://doi.org/10.1111/nph.13132>
- Brooker RW, Karley AJ, Newton AC et al (2016) Facilitation and sustainable agriculture: a mechanistic approach to reconciling crop production and conservation. *Funct Ecol* 30:98–107. <https://doi.org/10.1111/1365-2435.12496>
- Bucksch A, Atta-Boateng A, Azihou AF et al (2017) Morphological plant modeling: unleashing geometric and topological potential within the plant sciences. *Front Plant Sci* 8:900. <https://doi.org/10.3389/fpls.2017.00900>
- Bucksch A, Burrige J, York LM et al (2014) Image-based high-throughput field phenotyping of crop roots. *Plant Physiol* 166:470–486. <https://doi.org/10.1104/pp.114.243519>
- Cabrera-Bosquet L, Fournier C, Bricchet N, Welcker C, Suard B, Tardieu F (2016) High-throughput estimation of incident light, light interception and radiation-use efficiency of thousands of plants in a phenotyping platform. *New Phytol* 212:269–281. <https://doi.org/10.1111/nph.14027>
- Callaway RM (1995) Positive interactions among plants. *Bot Rev* 61: 306–349. <https://doi.org/10.1007/BF02912621>
- Callaway RM, Pennings SC, Richards CL (2003) Phenotypic plasticity and interactions among plants. *Ecology* 84:1115–1128. [https://doi.org/10.1890/0012-9658\(2003\)084\[1115:PPAIAP\]2.0.CO;2](https://doi.org/10.1890/0012-9658(2003)084[1115:PPAIAP]2.0.CO;2)
- Casadebaig P, Guillioni L, Lecoeur J, Christophe A, Champolivier L, Debaeke P (2011) SUNFLO, a model to simulate genotype-specific performance of the sunflower crop in contrasting environments. *Agric For Meteorol* 151:163–178. <https://doi.org/10.1016/j.agrformet.2010.09.012>
- Casadebaig P, Mestries E, Debaeke P (2016a) A model-based approach to assist variety evaluation in sunflower crop. *Eur J Agron* 81:92–105. <https://doi.org/10.1016/j.eja.2016.09.001>
- Casadebaig P, Zheng B, Chapman S et al (2016b) Assessment of the potential impacts of wheat plant traits across environments by combining crop modeling and global sensitivity analysis. *PLoS One* 11:e0146385. <https://doi.org/10.1371/journal.pone.0146385>
- Chatelin MH, Aubry C, Poussin JC et al (2005) DeciBle, a software package for wheat crop management simulation. *Agric Syst* 83: 77–99. <https://doi.org/10.1016/j.agsy.2004.03.003>
- Chave J (1999) Study of structural, successional and spatial patterns in tropical rain forests using TROLL, a spatially explicit forest model. *Ecol Model* 124:233–254. [https://doi.org/10.1016/S0304-3800\(99\)00171-4](https://doi.org/10.1016/S0304-3800(99)00171-4)
- Chelle M (2005) Phylloclimate or the climate perceived by individual plant organs: what is it? How to model it? What for? *New Phytol* 166:781–790. <https://doi.org/10.1111/j.1469-8137.2005.01350.x>
- Chelle M, Andrieu B (1999) Radiative models for architectural modeling. *Agronomie* 19:225–240. <https://doi.org/10.1051/agro:19990304>
- Chelle M, Andrieu B (1998) The nested radiosity model for the distribution of light within plant canopies. *Ecol Model* 111:75–91. [https://doi.org/10.1016/S0304-3800\(98\)00100-8](https://doi.org/10.1016/S0304-3800(98)00100-8)
- Chen T-W, Cabrera-Bosquet L, Alvarez Prado S, Perez R, Artzet S, Pradal C, Coupel-Ledru A, Fournier C, Tardieu F (2018) Genetic and environmental dissection of biomass accumulation in multi-genotype maize canopies. *J Exp Bot*. <https://doi.org/10.1093/jxb/ery309>



- Chenu K, Deihimfard R, Chapman SC (2013) Large-scale characterization of drought pattern: a continent-wide modelling approach applied to the Australian wheatbelt spatial and temporal trends. *New Phytol* 198:801–820. <https://doi.org/10.1111/nph.12192>
- Chenu K, Porter JR, Martre P, Basso B, Chapman SC, Ewert F, Bindi M, Asseng S (2017) Contribution of crop models to adaptation in wheat. *Trends Plant Sci* 22:472–490. <https://doi.org/10.1016/j.tplants.2017.02.003>
- Chimonyo VGP, Modi AT, Mabhaudhi T (2016) Simulating yield and water use of a sorghum-cowpea intercrop using APSIM. *Agric Water Manag* 177:317–328. <https://doi.org/10.1016/j.agwat.2016.08.021>
- Chimonyo VGP, Modi AT, Mabhaudhi T (2015) Perspective on crop modelling in the management of intercropping systems. *Arch Agron Soil Sci* 61:1511–1529. <https://doi.org/10.1080/03650340.2015.1017816>
- Colbach N, Biju-Duval L, Gardarin A et al (2014a) The role of models for multicriteria evaluation and multiobjective design of cropping systems for managing weeds. *Weed Res* 54:541–555. <https://doi.org/10.1111/wre.12112>
- Colbach N, Collard A, Guyot SHM, Mézière D, Munier-Jolain N (2014b) Assessing innovative sowing patterns for integrated weed management with a 3D crop:weed competition model. *Eur J Agron* 53:74–89. <https://doi.org/10.1016/j.eja.2013.09.019>
- Corre-Hellou G, Brisson N, Launay M et al (2007) Effect of root depth penetration on soil nitrogen competitive interactions and dry matter production in pea-barley intercrops given different soil nitrogen supplies. *Field Crop Res* 103:76–85. <https://doi.org/10.1016/j.fcr.2007.04.008>
- Corre-Hellou G, Faure M, Launay M et al (2009) Adaptation of the STICS intercrop model to simulate crop growth and N accumulation in pea-barley intercrops. *Field Crop Res* 113:72–81. <https://doi.org/10.1016/j.fcr.2009.04.007>
- Costanzo A, Bärberri P (2014) Functional agrobiodiversity and agroecosystem services in sustainable wheat production. A review. *Agron Sustain Dev* 34:327–348. <https://doi.org/10.1007/s13593-013-0178-1>
- Craufurd PQ, Vadez V, Jagadish SVK et al (2013) Crop science experiments designed to inform crop modeling. *Agric For Meteorol* 170: 8–18. <https://doi.org/10.1016/j.agrformet.2011.09.003>
- Creissen HE, Jorgensen TH, Brown JKM (2016) Increased yield stability of field-grown winter barley (*Hordeum vulgare* L.) varietal mixtures through ecological processes. *Crop Prot* 85:1–8. <https://doi.org/10.1016/j.cropro.2016.03.001>
- DeJong TM, Da Silva D, Vos J, Escobar-Gutiérrez AJ (2011) Using functional-structural plant models to study, understand and integrate plant development and ecophysiology. *Ann Bot* 108:987–989. <https://doi.org/10.1093/aob/mcr257>
- Dong N, Tang M-M, Zhang W-P et al (2018) Temporal differentiation of crop growth as one of the drivers of intercropping yield advantage. *Sci Rep* 8:3110. <https://doi.org/10.1038/s41598-018-21414-w>
- Dornbusch T, Baccar R, Watt J et al (2011) Plasticity of winter wheat modulated by sowing date, plant population density and nitrogen fertilisation: dimensions and size of leaf blades, sheaths and internodes in relation to their position on a stem. *Field Crop Res* 121: 116–124. <https://doi.org/10.1016/j.fcr.2010.12.004>
- Duchene O, Vian J-F, Celette F (2017) Intercropping with legume for agroecological cropping systems: complementarity and facilitation processes and the importance of soil microorganisms. A review. *Agric Ecosyst Environ* 240:148–161. <https://doi.org/10.1016/j.agee.2017.02.019>
- Dunbabin VM, Postma JA, Schnepf A et al (2013) Modelling root-soil interactions using three-dimensional models of root growth, architecture and function. *Plant Soil* 372:93–124. <https://doi.org/10.1007/s11104-013-1769-y>
- Durand J-L, Andrieu B, Barillot R, et al (2016) Designing and improving mixed grasslands: advances made in modelling forage variety performance. *Fourrages* 21–28
- Duru M, Therond O, Fares M (2015) Designing agroecological transitions; a review. *Agron Sustain Dev* 35:1237–1257. <https://doi.org/10.1007/s13593-015-0318-x>
- Ehrmann J, Ritz K (2014) Plant: soil interactions in temperate multi-cropping production systems. *Plant Soil* 376:1–29. <https://doi.org/10.1007/s11104-013-1921-8>
- Escobar-Gutiérrez AJ, Combes D, Rakocevic M, de Berranger C, Eprinchard-Ciesla A, Sinoquet H, Varlet-Grancher C (2009) Functional relationships to estimate Morphogenetically Active Radiation (MAR) from PAR and solar broadband irradiance measurements: the case of a sorghum crop. *Agric For Meteorol* 149: 1244–1253. <https://doi.org/10.1016/j.agrformet.2009.02.011>
- Essah SYE, Stoskopf NC (2002) Mixture performance of phenotypically contrasting barley cultivars. *Can J Plant Sci* 82:1–6. <https://doi.org/10.4141/P01-043>
- Evans MR, Grimm V, Johst K, Knuuttila T, de Langhe R, Lessells CM, Merz M, O'Malley MA, Orzack SH, Weisberg M, Wilkinson DJ, Wolkenhauer O, Benton TG (2013) Do simple models lead to generality in ecology? *Trends Ecol Evol* 28:578–583. <https://doi.org/10.1016/j.tree.2013.05.022>
- Evers JB, Bastiaans L (2016) Quantifying the effect of crop spatial arrangement on weed suppression using functional-structural plant modelling. *J Plant Res* 129:339–351. <https://doi.org/10.1007/s10265-016-0807-2>
- Evers JB, Letort V, Renton M, Kang M (2018a) Computational botany: advancing plant science through functional-structural plant modelling. *Ann Bot* 121:767–772. <https://doi.org/10.1093/aob/mcy050>
- Evers JB, van der Werf W, Stomph TJ, et al (2018b) Understanding and optimizing species mixtures using functional-structural plant modelling. *J Exp Bot* doi: <https://doi.org/10.1093/jxb/ery288>
- Evers JB, Vos J, Andrieu B, Struik PC (2006) Cessation of tillering in spring wheat in relation to light interception and red: far-red ratio. *Ann Bot* 97:649–658. <https://doi.org/10.1093/aob/mc1020>
- Faverjon L, Escobar-Gutiérrez A, Litrico I, Julier B, Louam G (2018) A generic individual-based model can predict yield, nitrogen content, and species abundance in experimental grassland communities. *J Exp Bot*. <https://doi.org/10.1093/jxb/ery323>
- Fayaud B, Coste F, Corre-Hellou G, Gardarin A, Dürr C (2014) Modelling early growth under different sowing conditions: a tool to predict variations in intercrop early stages. *Eur J Agron* 52:180–190. <https://doi.org/10.1016/j.eja.2013.09.009>
- Finckh MR, Gacek ES, Goyeau H et al (2000) Cereal variety and species mixtures in practice, with emphasis on disease resistance. *Agronomie* 20:813–837
- Fletcher AL, Kirkegaard JA, Peoples MB, Robertson MJ, Whish J, Swan AD (2016) Prospects to utilise intercrops and crop variety mixtures in mechanised, rain-fed, temperate cropping systems. *Crop Pasture Sci* 67:1252. <https://doi.org/10.1071/CP16211>
- Fletcher A, McNee M, Ogden G, Robertson M (2015) The residual N benefits of temporary intercropping field pea with wheat. In: Acuña T, Moeller C, Parsons D, Harrison M (eds) Building productive, diverse and sustainable landscapes. Harrison. Proceedings of the 17<sup>th</sup> Australian Agronomy Conference. Hobart, Tas, pp 987–990
- Fourcaud T, Zhang X, Stokes A et al (2008) Plant growth modelling and applications: the increasing importance of plant architecture in growth models. *Ann Bot* 101:1053–1063. <https://doi.org/10.1093/aob/mcn050>
- Fournier C, Andrieu B, Ljutovac S, Saint-Jean S (2003) ADEL-wheat: a 3D architectural model of wheat development. In: Hu BG, Jaeger M (eds). Beijing, pp 54–63
- Gaba S, Alignier A, Aviron S, et al (2018) Ecology for sustainable and multifunctional agriculture. In: Gaba S, Smith B, Lichtfouse E (eds) Sustainable agriculture reviews 28: ecology for agriculture. pp 1–46

- Gaba S, Lescouret F, Boudsocq S, Enjalbert J, Hinsinger P, Journet EP, Navas ML, Wery J, Louam G, Malézieux E, Pelzer E, Prudent M, Ozier-Lafontaine H (2015) Multiple cropping systems as drivers for providing multiple ecosystem services: from concepts to design. *Agron Sustain Dev* 35:607–623. <https://doi.org/10.1007/s13593-014-0272-z>
- Gao Y, Duan A, Qiu X et al (2010) Distribution of roots and root length density in a maize/soybean strip intercropping system. *Agric Water Manag* 98:199–212. <https://doi.org/10.1016/j.agwat.2010.08.021>
- García-Barrios L, Mayer-Foulkes D, Franco M et al (2001) Development and validation of a spatially explicit individual-based mixed crop growth model. *Bull Math Biol* 63:507–526. <https://doi.org/10.1006/bulm.2000.0226>
- Gérard F, Blitz-Frayret C, Hinsinger P, Pagès L (2017) Modelling the interactions between root system architecture, root functions and reactive transport processes in soil. *Plant Soil* 413:161–180. <https://doi.org/10.1007/s11104-016-3092-x>
- Gérard F, Gatz-Miller H, Bea S, et al (2018) Coupling reactive transport processes with root system architecture and functions: principles and application examples. In: *Terrestrial systems research: monitoring, prediction & high performance computing*. Bonn, Germany
- Gérard F, Mayer KU, Hodson MJ, Ranger J (2008) Modelling the biogeochemical cycle of silicon in soils: application to a temperate forest ecosystem. *Geochim Cosmochim Acta* 72:741–758. <https://doi.org/10.1016/j.gca.2007.11.010>
- Gigot C, de Vallavieille-Pope C, Huber L, Saint-Jean S (2014) Using virtual 3-D plant architecture to assess fungal pathogen splash dispersal in heterogeneous canopies: a case study with cultivar mixtures and a non-specialized disease causal agent. *Ann Bot* 114:863–875. <https://doi.org/10.1093/aob/mcu098>
- Gliessman SR (2014) *Agroecology: the ecology of sustainable food systems*, 3rd edn. CRC Press Inc, Boca Raton
- Godin C (2000) Representing and encoding plant architecture: a review. *Ann For Sci* 57:413–438
- Godin C, Caraglio Y (1998) A multiscale model of plant topological structures. *J Theor Biol* 191:1–46. <https://doi.org/10.1006/jtbi.1997.0561>
- Goldberg DE (1990) Components of resource competition in plant communities. In: Grace JB, Tilman D (eds) *Perspectives on plant competition*. pp 27–49
- Gonkhamdee S, Pierret A, Maeght J-L et al (2010) Effects of corn (*Zea mays* L.) on the local and overall root development of young rubber tree (*Hevea brasiliensis* Muel. Arg). *Plant Soil* 334:335–351. <https://doi.org/10.1007/s11104-010-0386-2>
- Gou F, van Ittersum MK, Simon E, Leffelaar PA, van der Putten PEL, Zhang L, van der Werf W (2017a) Intercropping wheat and maize increases total radiation interception and wheat RUE but lowers maize RUE. *Eur J Agron* 84:125–139. <https://doi.org/10.1016/j.eja.2016.10.014>
- Gou F, van Ittersum MK, van der Werf W (2017b) Simulating potential growth in a relay-strip intercropping system: model description, calibration and testing. *Field Crop Res* 200:122–142. <https://doi.org/10.1016/j.fcr.2016.09.015>
- Gou F, van Ittersum MK, Wang G et al (2016) Yield and yield components of wheat and maize in wheat-maize intercropping in the Netherlands. *Eur J Agron* 76:17–27. <https://doi.org/10.1016/j.eja.2016.01.005>
- Goudriaan J (1977) *Crop micrometeorology: a simulation study*. Pudoc, Center for Agricultural Publishing and Documentation, Wageningen
- Grimm V, Railsback S (2005) *Individual-based modeling and ecology*. Princeton University Press, Princeton; USA
- Gunes A, Bagci EG, Inal A (2007) Interspecific facilitative root interactions and rhizosphere effects on phosphorus and iron nutrition between mixed grown chickpea and barley. *J Plant Nutr* 30:1455–1469. <https://doi.org/10.1080/01904160701555648>
- Han G, Lang J, Sun Y et al (2016) Intercropping of rice varieties increases the efficiency of blast control through reduced disease occurrence and variability. *J Integr Agric* 15:795–802. [https://doi.org/10.1016/S2095-3119\(15\)61055-3](https://doi.org/10.1016/S2095-3119(15)61055-3)
- Hatt S, Boeraeve F, Artru S et al (2018) Spatial diversification of agroecosystems to enhance biological control and other regulating services: an agroecological perspective. *Sci Total Environ* 621:600–611. <https://doi.org/10.1016/j.scitotenv.2017.11.296>
- Hauggaard-Nielsen H, Gooding M, Ambus P, Corre-Hellou G, Crozat Y, Dahlmann C, Dibet A, von Fragstein P, Pristeri A, Monti M, Jensen ES (2009) Pea-barley intercropping for efficient symbiotic N<sub>2</sub>-fixation, soil N acquisition and use of other nutrients in European organic cropping systems. *Field Crop Res* 113:64–71. <https://doi.org/10.1016/j.fcr.2009.04.009>
- Hautier Y, Seabloom EW, Borer ET, et al (2014) Eutrophication weakens stabilizing effects of diversity in natural grasslands. *Nature* 508: 521–+. doi: <https://doi.org/10.1038/nature13014>
- Hemmerling R, Kniemeyer O, Lanwert D, Kurth W, Buck-Sorlin G (2008) The rule-based language XL and the modelling environment GroIMP illustrated with simulated tree competition. *Funct Plant Biol* 35:739–750. <https://doi.org/10.1071/FP08052>
- Hinsinger P, Betencourt E, Bernard L et al (2011) P for two, sharing a scarce resource: soil phosphorus acquisition in the rhizosphere of intercropped species. *Plant Physiol* 156:1078–1086. <https://doi.org/10.1104/pp.111.175331>
- Holmgren M, Scheffer M (2010) Strong facilitation in mild environments: the stress gradient hypothesis revisited. *J Ecol* 98:1269–1275. <https://doi.org/10.1111/j.1365-2745.2010.01709.x>
- Holzworth DP, Huth NI, deVoil PG et al (2014) APSIM—evolution towards a new generation of agricultural systems simulation. *Environ Model Softw* 62:327–350. <https://doi.org/10.1016/j.envsoft.2014.07.009>
- Hughes AR, Stachowicz JJ (2004) Genetic diversity enhances the resistance of a seagrass ecosystem to disturbance. *Proc Natl Acad Sci* 101:8998–9002. <https://doi.org/10.1073/pnas.0402642101>
- Huston M, Deangelis D, Post W (1988) New computer-models unify ecological theory—computer-simulations show that many ecological patterns can be explained by interactions among individual organisms. *Bioscience* 38:682–691. <https://doi.org/10.2307/1310870>
- Jeuffroy M-H, Casadebaig P, Debaeke P et al (2014) Agronomic model uses to predict cultivar performance in various environments and cropping systems. A review. *Agron Sustain Dev* 34:121–137. <https://doi.org/10.1007/s13593-013-0170-9>
- Kattge J, Diaz S, Lavorel S et al (2011) TRY—a global database of plant traits. *Glob Chang Biol* 17:2905–2935. <https://doi.org/10.1111/j.1365-2486.2011.02451.x>
- Keating BA, Thorburn PJ (2018) Modelling crops and cropping systems—evolving purpose, practice and prospects. *Eur J Agron*. <https://doi.org/10.1016/j.eja.2018.04.007>
- Keddy P (1992) Assembly and response rules—two goals for predictive community ecology. *J Veg Sci* 3:157–164. <https://doi.org/10.2307/3235676>
- Kiaer LP, Boesen NR (2018) Trait plasticity and G x E challenges when breeding for mixture-ideotypes. Kassel University Press GmbH, Witzenhausen, Germany, pp 3–6
- Kiaer LP, Skovgaard IM, Ostergard H (2009) Grain yield increase in cereal variety mixtures: a meta-analysis of field trials. *Field Crop Res* 114:361–373. <https://doi.org/10.1016/j.fcr.2009.09.006>
- Knörzer H, Graeff-Hönninger S, Müller BU, Piepho HP, Claupein W (2010) A modeling approach to simulate effects of intercropping and interspecific competition in arable crops. *Int J Inf Syst Soc Change* 1:44–65. <https://doi.org/10.4018/jissc.2010101014>
- Knörzer H, Lawes R, Robertson M et al (2011) Evaluation and performance of the APSIM crop growth model for German winter wheat, maize and field pea varieties in monocropping and intercropping systems. *J Agric Sci Technol B* 1:698–717

- Kremen C, Miles A (2012) Ecosystem services in biologically diversified versus conventional farming systems: benefits, externalities, and trade-offs. *Ecol Soc* 17. <https://doi.org/10.5751/ES-05035-170440>
- Launay M, Brisson N, Satger S et al (2009) Exploring options for managing strategies for pea-barley intercropping using a modeling approach. *Eur J Agron* 31:85–98. <https://doi.org/10.1016/j.eja.2009.04.002>
- Lechenet M, Dessaint F, Py G et al (2017) Reducing pesticide use while preserving crop productivity and profitability on arable farms. *Nat Plants* 3:17008. <https://doi.org/10.1038/nplants.2017.8>
- Li L, Sun J, Zhang F et al (2001) Wheat/maize or wheat/soybean strip intercropping: I. Yield advantage and interspecific interactions on nutrients. *Field Crop Res* 71:123–137. [https://doi.org/10.1016/S0378-4290\(01\)00156-3](https://doi.org/10.1016/S0378-4290(01)00156-3)
- Li L, Tilman D, Lambers H, Zhang F-S (2014) Plant diversity and overyielding: insights from belowground facilitation of intercropping in agriculture. *New Phytol* 203:63–69. <https://doi.org/10.1111/nph.12778>
- Li L, Zhang FS, Li XL, Christie P, Sun J, Yang S, Tang C (2003) Interspecific facilitation of nutrient uptake by intercropped maize and faba bean. *Nutr Cycl Agroecosyst* 65:61–71. <https://doi.org/10.1023/A:1021885032241>
- Lieth H (1974) Purposes of a phenology book. In: Phenology and seasonality modeling. Springer, Berlin, Heidelberg, pp 3–19
- Li-li M, Li-zhen Z, Si-ping Z et al (2015) Resource use efficiency, ecological intensification and sustainability of intercropping systems. *J Integr Agric* 14:1542–1550. [https://doi.org/10.1016/S2095-3119\(15\)61039-5](https://doi.org/10.1016/S2095-3119(15)61039-5)
- Lin BB (2011) Resilience in agriculture through crop diversification: adaptive management for environmental change. *Bioscience* 61: 183–193. <https://doi.org/10.1525/bio.2011.61.3.4>
- Lithourgidis AS, Dordas CA, Damalas CA, Vlachostergios DN (2011) Annual intercrops: an alternative pathway for sustainable agriculture. *Aust J Crop Sci* 5:396–410
- Litrico I, Violle C (2015) Diversity in plant breeding a new conceptual framework. *Trends Plant Sci* 20:604–613. <https://doi.org/10.1016/j.tplants.2015.07.007>
- Liu B, Asseng S, Muller C, et al (2016) Similar estimates of temperature impacts on global wheat yield by three independent methods. *Nat Clim Change* 6:1130–+. doi: <https://doi.org/10.1038/NCLIMATE3115>
- Liu J, Ashton P (1995) Individual-based simulation-models for forest succession and management. *For Ecol Manag* 73:157–175. [https://doi.org/10.1016/0378-1127\(94\)03490-N](https://doi.org/10.1016/0378-1127(94)03490-N)
- Liu X, Rahman T, Yang F et al (2017) PAR interception and utilization in different maize and soybean intercropping patterns. *PLoS One* 12: e0169218. <https://doi.org/10.1371/journal.pone.0169218>
- Long Q, Kurth W, Pradal C (2018) An architecture for the integration of different functional and structural plant models. In: IEEA. Beijing, China, pp 107–113
- Loreau M, Hector A (2001) Partitioning selection and complementarity in biodiversity experiments. *Nature* 412:72–76. <https://doi.org/10.1038/35083573>
- Louam G, Escobar-Gutiérrez A, Migault V, et al (2014) “Virtual grassland”: an individual-based model to deal with grassland community dynamics under fluctuating water and nitrogen availability. In: Hopkins A, Collins RP, Fraser MD, et al. (eds). Aberystwyth, Wales, pp 242–244
- Lv Y, Francis CA, Wue P et al (2014) Maize-soybean intercropping interactions above and below ground. *Crop Sci* 54:914–922. <https://doi.org/10.2135/cropsci2013.06.0403>
- MacArthur R, Levins R (1967) The limiting similarity, convergence, and divergence of coexisting Species. *Am Nat* 101:377–+. <https://doi.org/10.1086/282505>
- Machado S (2009) Does intercropping have a role in modern agriculture? *J Soil Water Conserv* 64:55A–57A. <https://doi.org/10.2489/jswc.64.2.55A>
- Malézieux E, Crozat Y, Dupraz C et al (2009) Mixing plant species in cropping systems: concepts, tools and models. A review. *Agron Sustain Dev* 29:43–62. <https://doi.org/10.1051/agro:2007057>
- Mao L, Zhang L, Li W et al (2012) Yield advantage and water saving in maize/pea intercrop. *Field Crop Res* 138:11–20. <https://doi.org/10.1016/j.fcr.2012.09.019>
- Martre P, He J, Le Gouis J, Semenov MA (2015) In silico system analysis of physiological traits determining grain yield and protein concentration for wheat as influenced by climate and crop management. *J Exp Bot* 66:3581–3598. <https://doi.org/10.1093/jxb/erv049>
- Monsi M, Saeki T (2005) On the factor light in plant communities and its importance for matter production. *Ann Bot* 95:549–567. <https://doi.org/10.1093/aob/mci052>
- Montazeaud G, Violle C, Fréville H et al (2017) Crop mixtures: does niche complementarity hold for belowground resources? An experimental test using rice genotypic pairs. *Plant Soil*:1–16. <https://doi.org/10.1007/s11104-017-3496-2>
- Monteith J (1977) Climate and efficiency of crop production in Britain. *Philos Trans R Soc Lond Ser B-Biol Sci* 281:277–294. <https://doi.org/10.1098/rstb.1977.0140>
- Monzon JP, Sadras VO, Abbate PA, Cavaglia OP (2007) Modelling management strategies for wheat-soybean double crops in the south-eastern Pampas. *Field Crop Res* 101:44–52. <https://doi.org/10.1016/j.fcr.2006.09.007>
- Munier-Jolain N, Guyot S, Colbach N (2013) A 3D model for light interception in heterogeneous crop:weed canopies: model structure and evaluation. *Ecol Model* 250:101–110. <https://doi.org/10.1016/j.ecolmodel.2012.10.023>
- Munz S, Claupein W, Graeff-Hoenninger S (2014) Growth of bean strip-intercropped with maize: evaluation of the CROPGRO model. *Agron J* 106:2235–2247. <https://doi.org/10.2134/agronj13.0579>
- Nicotra AB, Atkin OK, Bonser SP et al (2010) Plant phenotypic plasticity in a changing climate. *Trends Plant Sci* 15:684–692. <https://doi.org/10.1016/j.tplants.2010.09.008>
- Ning T, Zheng Y, Han H, Jiang G, Li Z (2012) Nitrogen uptake, biomass yield and quality of intercropped spring- and summer-sown maize at different nitrogen levels in the North China Plain. *Biomass Bioenergy* 47:91–98. <https://doi.org/10.1016/j.biombioe.2012.09.059>
- Pagès L (2011) Links between root developmental traits and foraging performance. *Plant Cell Environ* 34:1749–1760. <https://doi.org/10.1111/j.1365-3040.2011.02371.x>
- Pagès L, Becel C, Boukcim H et al (2014) Calibration and evaluation of ArchiSimple, a simple model of root system architecture. *Ecol Model* 290:76–84. <https://doi.org/10.1016/j.ecolmodel.2013.11.014>
- Passioura JB (1996) Simulation models: science; snake oil, education, or engineering? *Agron J* 88:690–694. <https://doi.org/10.2134/agronj1996.00021962008800050002x>
- Pérot T, Picard N (2012) Mixture enhances productivity in a two-species forest: evidence from a modeling approach. *Ecol Res* 27:83–94. <https://doi.org/10.1007/s11284-011-0873-9>
- Postma JA, Lynch JP (2012) Complementarity in root architecture for nutrient uptake in ancient maize/bean and maize/bean/squash polycultures. *Ann Bot* 110:521–534. <https://doi.org/10.1093/aob/mcs082>
- Potochnik A, McGill B (2012) The limitations of hierarchical organization. *Philos Sci* 79:120–140. <https://doi.org/10.1086/663237>
- Potting RPJ, Perry JN, Powell W (2005) Insect behavioural ecology and other factors affecting the control efficacy of agro-ecosystem diversification strategies. *Ecol Model* 182:199–216. <https://doi.org/10.1016/j.ecolmodel.2004.07.017>

- Pradal C, Boudon F, Nouguier C et al (2009) PlantGL: a python-based geometric library for 3D plant modelling at different scales. *Graph Model* 71:1–21. <https://doi.org/10.1016/j.gmod.2008.10.001>
- Pradal C, Fournier C, Valduriez P, Cohen-Boulakia S (2015) OpenAlea: scientific workflows combining data analysis and simulation. In: Gupta A, Rathbun S (eds). Univ Calif San Diego, San Diego, CA
- Pronk AA, Goudriaan J, Stilma E, Challa H (2003) A simple method to estimate radiation interception by nursery stock conifers: a case study of eastern white cedar. *Njas-Wagening J Life Sci* 51:279–295. [https://doi.org/10.1016/S1573-5214\(03\)80020-9](https://doi.org/10.1016/S1573-5214(03)80020-9)
- Purves DW, Lichstein JW, Strigul N, Pacala SW (2008) Predicting and understanding forest dynamics using a simple tractable model. *PNAS* 105:17018–17022. <https://doi.org/10.1073/pnas.0807754105>
- Railsback S, Grimm V (2012) Agent-based and individual-based modeling—a practical introduction. Princeton University Press, Princeton
- Raseduzzaman M, Jensen ES (2017) Does intercropping enhance yield stability in arable crop production? A meta-analysis. *Eur J Agron* 91: 25–33. <https://doi.org/10.1016/j.eja.2017.09.009>
- Ratnadass A, Fernandes P, Avelino J, Habib R (2012) Plant species diversity for sustainable management of crop pests and diseases in agroecosystems: a review. *Agron Sustain Dev* 32:273–303. <https://doi.org/10.1007/s13593-011-0022-4>
- Raynaud X, Jaillard B, Leadley PW (2008) Plants may alter competition by modifying nutrient bioavailability in rhizosphere: a modeling approach. *Am Nat* 171:44–58. <https://doi.org/10.1086/523951>
- Reckling M (2016) A cropping system assessment framework—evaluating effects of introducing legumes into crop rotations. *Eur J Agron* 76:186–197
- Reichman OJ, Jones MB, Schildhauer MP (2011) Challenges and opportunities of open data in ecology. *Science* 331:703–705. <https://doi.org/10.1126/science.1197962>
- Renton M, Chauhan BS (2017) Modelling crop-weed competition: why, what, how and what lies ahead? *Crop Prot* 95:101–108. <https://doi.org/10.1016/j.cropro.2016.09.003>
- Reynolds M, Kropff M, Crossa J, Koo J, Kruseman G, Molero Milan A, Rutkoski J, Schulthess U, Balwinder-Singh, Sonder K, Tonnang H, Vadez V (2018) Role of modelling in international crop research: overview and some case studies. *Agronomy* 8:291. <https://doi.org/10.3390/agronomy8120291>
- Robert C, Bancal MO, Nicolas P, Lannou C, Ney B (2004) Analysis and modelling of effects of leaf rust and Septoria tritici blotch on wheat growth. *J Exp Bot* 55:1079–1094. <https://doi.org/10.1093/jxb/erh108>
- Röhrig M, Stutzel H, Alt C (1999) A three-dimensional approach to modeling light interception in heterogeneous canopies. *Agron J* 91:1024–1032
- Rosenzweig C, Jones JW, Hatfield JL et al (2013) The Agricultural Model Intercomparison and Improvement Project (AgMIP): protocols and pilot studies. *Agric For Meteorol* 170:166–182. <https://doi.org/10.1016/j.agrformet.2012.09.011>
- Rötter RP, Appiah M, Fichtler E et al (2018) Linking modelling and experimentation to better capture crop impacts of agroclimatic extremes—a review. *Field Crop Res* 221:142–156. <https://doi.org/10.1016/j.fcr.2018.02.023>
- Seidel SJ, Palosuo T, Thorburn P, Wallach D (2018) Towards improved calibration of crop models—where are we now and where should we go? *Eur J Agron* 94:25–35. <https://doi.org/10.1016/j.eja.2018.01.006>
- Sinclair TR, Seligman N (2000) Criteria for publishing papers on crop modeling. *Field Crop Res* 68:165–172. [https://doi.org/10.1016/S0378-4290\(00\)00105-2](https://doi.org/10.1016/S0378-4290(00)00105-2)
- Sinclair TR, Seligman NG (1996) Crop modeling: from infancy to maturity. *Agron J* 88:698–704. <https://doi.org/10.2134/agronj1996.00021962008800050004x>
- Singh AK, Goyal V, Mishra AK, Parihar SS (2013) Validation of CropSyst simulation model for direct seeded rice-wheat cropping system. *Curr Sci* 104:1324–1331
- Sinoquet H, Le Roux X, Adam B et al (2001) RATP: a model for simulating the spatial distribution of radiation absorption, transpiration and photosynthesis within canopies: application to an isolated tree crown. *Plant Cell Environ* 24:395–406. <https://doi.org/10.1046/j.1365-3040.2001.00694.x>
- Sinoquet H, Moulia B, Gastal F et al (1990) Modeling the radiative balance of the components of a well-mixed canopy—application to a white clover-tall fescue mixture. *Acta Oecologica-Int J Ecol* 11:469–486
- Soussana J-F, Maire V, Gross N et al (2012) Gemini: a grassland model simulating the role of plant traits for community dynamics and ecosystem functioning. Parameterization and evaluation. *Ecol Model* 231:134–145. <https://doi.org/10.1016/j.ecolmodel.2012.02.002>
- Stoll P, Weiner J (2000) A neighborhood view of interactions among individual plants. In: Dieckmann U, Law R, Metz JAJ (eds) *The geometry of ecological interactions: simplifying spatial complexity*. Cambridge University Press, pp 11–27
- Tooker JF, Frank SD (2012) Genotypically diverse cultivar mixtures for insect pest management and increased crop yields. *J Appl Ecol* 49: 974–985. <https://doi.org/10.1111/j.1365-2664.2012.02173.x>
- Ustin SL, Gamon JA (2010) Remote sensing of plant functional types. *New Phytol* 186:795–816. <https://doi.org/10.1111/j.1469-8137.2010.03284.x>
- Vandermeer JH (1989) *The ecology of intercropping*. Cambridge University Press, Cambridge
- Vidal T, Gigot C, de Vallavieille-Pope C et al (2018) Contrasting plant height can improve the control of rain-borne diseases in wheat cultivar mixture: modelling splash dispersal in 3-D canopies. *Ann Bot* 121:1299–1308. <https://doi.org/10.1093/aob/mcy024>
- Vos J, Evers JB, Buck-Sorlin GH, Andrieu B, Chelle M, de Visser PHB (2010) Functional-structural plant modelling: a new versatile tool in crop science. *J Exp Bot* 61:2101–2115. <https://doi.org/10.1093/jxb/erp345>
- Wang Z, Zhao X, Wu P, He J, Chen X, Gao Y, Cao X (2015) Radiation interception and utilization by wheat/maize strip intercropping systems. *Agric For Meteorol* 204:58–66. <https://doi.org/10.1016/j.agrformet.2015.02.004>
- Wezel A, Casagrande M, Celette F et al (2014) Agroecological practices for sustainable agriculture. A review. *Agron Sustain Dev* 34:1–20. <https://doi.org/10.1007/s13593-013-0180-7>
- Wilson G, Bryan J, Cranston K et al (2017) Good enough practices in scientific computing. *PLoS Comput Biol* 13:e1005510. <https://doi.org/10.1371/journal.pcbi.1005510>
- Wilson J (1988) Shoot competition and root competition. *J Appl Ecol* 25: 279–296. <https://doi.org/10.2307/2403626>
- Wu L, McGechan MB, McRoberts N et al (2007) SPACSYS: integration of a 3D root architecture component to carbon, nitrogen and water cycling—model description. *Ecol Model* 200:343–359. <https://doi.org/10.1016/j.ecolmodel.2006.08.010>
- Yang F, Liao D, Wu X et al (2017) Effect of aboveground and belowground interactions on the intercrop yields in maize-soybean relay intercropping systems. *Field Crop Res* 203:16–23. <https://doi.org/10.1016/j.fcr.2016.12.007>
- Yu Y, Stomph T-J, Makowski D, van der Werf W (2015) Temporal niche differentiation increases the land equivalent ratio of annual intercrops: a meta-analysis. *Field Crop Res* 184:133–144. <https://doi.org/10.1016/j.fcr.2015.09.010>
- Zeller SL, Kalinina O, Flynn DFB, Schmid B (2012) Mixtures of genetically modified wheat lines outperform monocultures. *Ecol Appl* 22: 1817–1826
- Zhang L, Hu Z, Fan J et al (2014) A meta-analysis of the canopy light extinction coefficient in terrestrial ecosystems. *Front Earth Sci* 8: 599–609

- Zhang W-P, Liu G-C, Sun J-H, Fornara D, Zhang LZ, Zhang FF, Li L (2017) Temporal dynamics of nutrient uptake by neighbouring plant species: evidence from intercropping. *Funct Ecol* 31:469–479. <https://doi.org/10.1111/1365-2435.12732>
- Zhang X, Xu M, Liu J et al (2016) Greenhouse gas emissions and stocks of soil carbon and nitrogen from a 20-year fertilised wheat-maize intercropping system: a model approach. *J Environ Manag* 167: 105–114. <https://doi.org/10.1016/j.jenvman.2015.11.014>
- Zhu J, van der Werf W, Anten NPR, Vos J, Evers JB (2015) The contribution of phenotypic plasticity to complementary light capture in plant mixtures. *New Phytol* 207:1213–1222. <https://doi.org/10.1111/nph.13416>
- Zhu J, van der Werf W, Vos J, Anten NPR, van der Putten PEL, Evers JB (2016) High productivity of wheat intercropped with maize is associated with plant architectural responses. *Ann Appl Biol* 168:357–372. <https://doi.org/10.1111/aab.12268>