



HAL
open science

Detailed, Accurate, Human Shape Estimation from Clothed 3D Scan Sequences

Chao Zhang, Sergi Pujades, Michael J Black, Gerard Pons-Moll

► **To cite this version:**

Chao Zhang, Sergi Pujades, Michael J Black, Gerard Pons-Moll. Detailed, Accurate, Human Shape Estimation from Clothed 3D Scan Sequences. CVPR 2017 - IEEE Conference on Computer Vision and Pattern Recognition, Jul 2017, Honolulu, United States. pp.5484-5493, 10.1109/CVPR.2017.582 . hal-02162183

HAL Id: hal-02162183

<https://inria.hal.science/hal-02162183v1>

Submitted on 21 Jun 2019

HAL is a multi-disciplinary open access archive for the deposit and dissemination of scientific research documents, whether they are published or not. The documents may come from teaching and research institutions in France or abroad, or from public or private research centers.

L'archive ouverte pluridisciplinaire **HAL**, est destinée au dépôt et à la diffusion de documents scientifiques de niveau recherche, publiés ou non, émanant des établissements d'enseignement et de recherche français ou étrangers, des laboratoires publics ou privés.

Detailed, accurate, human shape estimation from clothed 3D scan sequences

Chao Zhang^{1,2}, Sergi Pujades¹, Michael Black¹, and Gerard Pons-Moll¹

¹MPI for Intelligent Systems, Tübingen, Germany

²Dept. of Computer Science, The University of York, UK

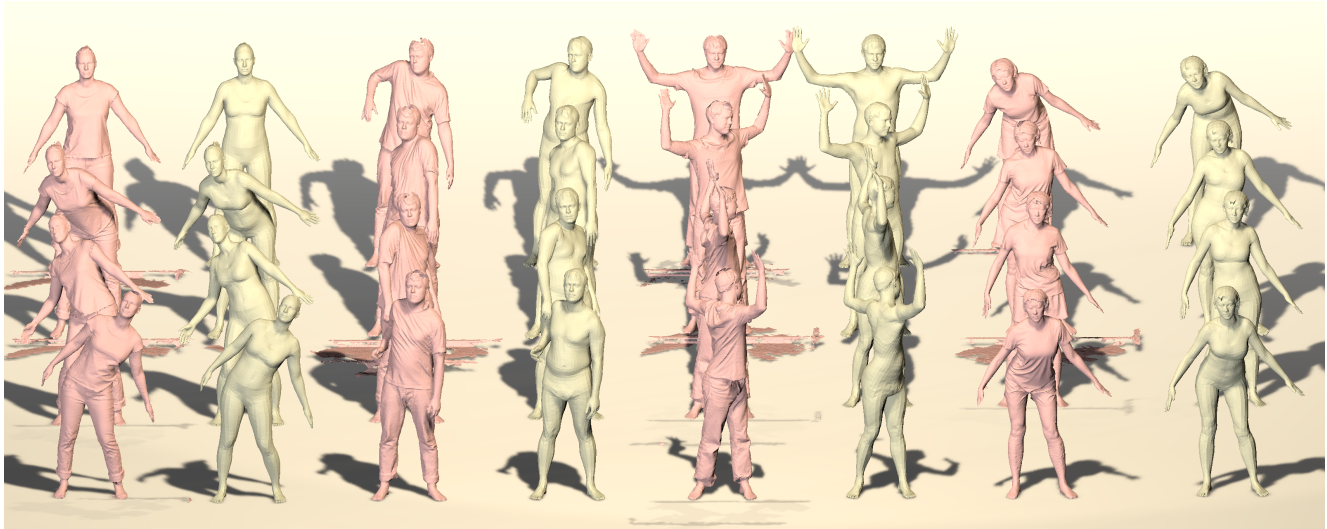


Figure 1: Given static 3D scans or 3D scan sequences (in pink), we estimate the naked shape under clothing (beige). Our method obtains accurate results by minimizing an objective function that captures the visible details of the skin, while being robust to clothing. We show several pairs of clothed scan sequences and the estimated body shape underneath.

Abstract

We address the problem of estimating human pose and body shape from 3D scans over time. Reliable estimation of 3D body shape is necessary for many applications including virtual try-on, health monitoring, and avatar creation for virtual reality. Scanning bodies in minimal clothing, however, presents a practical barrier to these applications. We address this problem by estimating body shape under clothing from a sequence of 3D scans. Previous methods that have exploited body models produce smooth shapes lacking personalized details. We contribute a new approach to recover a personalized shape of the person. The estimated shape deviates from a parametric model to fit the 3D scans. We demonstrate the method using high quality 4D data as well as sequences of visual hulls extracted from multi-view images. We also make available BUFF, a new 4D dataset that enables quantitative evaluation <http://buff.is.tue.mpg.de/>. Our method outperforms the state of the art in both pose estimation and shape estimation, qualitatively and quantitatively.

1. Introduction

We address the problem of estimating the body shape of a person wearing clothing from 3D scan sequences or visual hulls computed from multi-view images. Reliably estimating the shape under clothing is useful for many applications including virtual try-on, biometrics, and fitness. It is also a key component for virtual clothing and cloth simulation where garments need to be synthesized on top of the minimally-clothed body. Furthermore, most digital recordings of humans are done wearing clothes and therefore automatic methods to extract biometric information from such data are needed. While clothes occlude the minimally-clothed shape (MCS) of the human and make the task challenging, different poses of the person provide different constraints on the shape under the clothes. Previous work [2, 45] exploits this fact by optimizing shape using different poses. They use the statistical shape model SCAPE [1] that factorizes human shape into subject identity and pose. The main limitation of such approaches is that only the parameters of the statistical model are opti-

mized and so the solutions are constrained to lie on the model space. While statistical models provide powerful constraints on the human shape, they are typically overly-smooth and important identity details such as face features are lost. More importantly, constraints such as “the cloth garment should lie outside the body shape surface” are difficult to satisfy when optimizing model parameters. This is because shape deformations in most statistical body models are global, so a step in model space that, for example, shrinks the belly might have the “side effect” of making the person shorter. Therefore, we propose a novel method to estimate the MCS, that recovers accurate global body shape as well as important local shape identity details as can be seen in Fig. 1. Our hypothesis is that several poses of a person wearing the same clothes provide enough constraints for detailed body shape capture. Moreover, if identity details are visible, e.g. the face, the method should capture them.

To do so, we propose to minimize a single-frame objective function that (i) enforces the scan cloth vertices to remain outside of the MCS, (ii) makes the MCS tightly fit the visible skin parts, and (iii) uses a robust function that snaps MCS to close-by cloth vertices and ignores far away cloth points.

In contrast to previous work, where only model shape parameters are optimized, we directly optimize the $N = 6890$ vertices of a template in a canonical “T” pose (unposed template). This allows us to capture local shape details by satisfying the objective constraints. To satisfy anthropometric constraints, we regularize the optimisation vertices to remain close to a statistical body model. We use SMPL [20], a publicly available vertex-based model that is compatible with standard graphics pipelines. While this formulation has a larger number of variables to optimise, we show that it leads to more accurate and more detailed results.

While simple, the proposed single-frame objective is powerful, as it can be adapted to different tasks. To leverage the temporal information one would like to optimize all scans in the sequence at once. However, given high resolution scans, this is computationally very expensive and memory intensive. Hence, we first register/align all scans by deforming one template to explain both, skin and cloth scan points. These *cloth alignments* are obtained by minimizing a special case of the single-frame objective treating all scan vertices as skin. Since the model factors pose and shape, all cloth alignment templates live in a common unposed space; we call the union of these unposed alignments the *fusion scan*. Since the cloth should lie outside the body for all frames we minimize the single-frame objective using the fusion scan as input and obtain an accurate shape template (*fusion shape*) for the person. Finally, to obtain the pose and the time varying shape details, we optimize again the single objective function using the fusion shape as a regularizer. The overview of the method is described in Fig. 2.

The result is a numerically and visually accurate estimation of the body shape under clothing and its pose that fits the clothed scans (see Fig. 1).

To validate our approach we use an existing dataset [45] and collected a new dataset (BUFF : Bodies Under Flowing Fashion) that includes high resolution 3D scan sequences of 3 males and 3 females in different clothing styles. We make BUFF publicly available for research purposes at <http://buff.is.tue.mpg.de/>. BUFF contains in total 11,054 high resolution clothed scans with ground truth naked shape for each subject. Qualitative as well as quantitative results demonstrate that our method outperforms previous state of the art methods.

2. Related Work

Body Models. A key ingredient for robust human pose and shape estimation is the body model [32]. Early body models in computer vision were based on simple primitives [3, 12, 29, 36]. More recent body models [1, 20, 49] encode shape and pose deformations separately and are learned from thousands of scans of real people. Some works model shape and pose deformations jointly as in [15] where they perform PCA on a rotation-invariant encoding of triangles.

A popular body model is SCAPE [1], which factors triangle deformations into pose and shape. Recent work has proposed to make SCAPE more efficient by approximating the pose dependent deformations with Linear Blend Skinning (LBS) [17, 28]. To increase the expressiveness of the shape space, [7] combines SCAPE with localized multilinear models for each body part. SMPL [20] models variations due to pose and shape using a linear function. Some models [26, 31] incorporate also dynamic soft-tissue deformations; inferring soft-tissue deformations under clothing is an interesting future direction.

Pose and Shape Estimation. A large number of works estimate the body pose and shape from people wearing minimal clothing. Methods [43, 46, 47] to estimate pose and shape from a depth sensor typically combine silhouette, depth data or color terms. In [4] they estimate body shape from a depth sequence but they focus on people wearing minimal clothing.

In [33] they estimate the pose and shape from depth data combining bottom up correspondences with top down model fitting. However, clothing is not explicitly modeled. In [16] they propose a real-time full body tracker based on Kinect but they first acquire the shape of the subject in a fixed posture and then keep shape parameters fixed.

A large number of methods track the human pose/shape from images or multi-view images ignoring clothing or treating it as noise [6, 11, 39]. The advent of human part detectors trained from large amounts of annotated data using Convolutional Neural Networks [27, 42, 23] has made human shape and pose estimation possible in challenging

scenarios [5, 34, 9, 18]. In [5] they fit a SMPL model to joint detections to estimate pose and shape. However the estimated shape is a simplification since bone lengths alone can not determine the full body shape. Recently, [34] uses a sum-of-Gaussians body model [39] and estimates pose and shape in outdoor sequences but the alignment energy does not consider clothing.

Shape Under Clothing. Estimating the underlying shape occluded by cloth is a highly under-constrained problem. To cope with this, most existing methods exploit statistical body models, like SCAPE or variants of it. In [14] they estimate shape from a single 3D scan. Their rotation-invariant body representation does not separate and pose parameters and thus it can not be trivially extended to sequences. In [21] they propose a layered model of cloth and estimate the body shape by detecting areas where the cloth is close to the body. Wuhrer et al. [44] estimate shape under clothing on single or multiple 3D scans. The pose and shape is estimated at every frame and the final shape is obtained as the average over multiple frames. Stoll et al. [38] estimate the naked shape under a clothed template but require manual input and their focus is on estimating an approximate shape to use as a proxy for collision detection. All these approaches require manual input to initialize the pose [14, 21, 44].

The work of [35] incorporates a model of clothing for more robust tracking under clothing but only results for the lower leg are shown and shape is given as input to the method. Following the same principle [13], proposes to learn the statistics of how cloth deviates from the body for robust inference but they do so in 2D. Similarly in [37] they dress the SCAPE body model using physics simulation to learn such statistics but the clothing variety is very limited.

The authors of [2] estimate the body shape under clothing from multi-view images and like us they exploit temporal information. However, they only optimize model parameters and hence shape details are not captured. Numerical evaluation is only provided using biometric shape features. The work of [45] proposes a similar approach to estimate shape and pose under clothing in motion but they do it from scans and only optimize model parameters. The pose deformation model used in [45] is too simple to track complex poses such as shrugging or lifting arms.

The previous work is restricted to optimize model parameters and hence, the results lack detail because they are restricted to the model space. We go beyond state of the art and estimate jointly model parameters and a subject specific free-form shape. Other work is model free and estimates non-rigid 3D shape over time [10, 22, 25, 48]. While this work can capture people in clothing, it does not use a body model and cannot estimate shape *under* clothing. Our method combines the strong constraints of a body model with the freedom to deform like the model-free methods.

3. Body Model

SMPL [20] is a body model that uses a learned rigged template \mathbf{T} with $N = 6890$ vertices. The vertex positions of SMPL are adapted according to identity-dependent shape parameters and the skeleton pose. The skeletal structure of the human body is modeled with a kinematic chain consisting of rigid bone segments linked by $n = 24$ joints. Each joint is modeled as a ball joint with 3 rotational Degrees of Freedom (DoF), parametrized with exponential coordinates ω . Including translation, the pose θ is determined by a pose vector of $3 \times 24 + 3 = 75$ parameters.

To model shape and pose dependent deformations SMPL modifies the template in an additive way and predicts the joint locations from the deformed template. The model, $M(\beta, \theta)$ is then

$$M(\beta, \theta) = W(T(\beta, \theta), J(\beta), \theta, \mathbf{W}) \quad (1)$$

$$T(\beta, \theta) = \mathbf{T}_\mu + B_s(\beta) + B_p(\theta) \quad (2)$$

where $W(\mathbf{T}_\mu, \theta, \mathbf{J}) : \mathbb{R}^{3N} \times \mathbb{R}^{|\theta|} \times \mathbb{R}^{3K} \mapsto \mathbb{R}^{3N}$ is a linear blend skinning function that takes vertices in the rest pose \mathbf{T}_μ , joint locations \mathbf{J} , a pose θ , and the blend weights \mathbf{W} , and returns the posed vertices. The parameters $B_s(\beta)$ and $B_p(\theta)$ are vectors of vertex offsets from the template. We refer to these as shape and pose blend shapes respectively. We use \mathcal{M} to refer to the mesh produced by SMPL. Note that this is different from M , which only refers to the vertices. See [20] for more details.

4. Method

Our goal is to estimate the naked shape and pose of a subject from a sequence of clothed scans $\{\mathcal{S}\}_k$. If the scans have color information, we use it to split the scan vertices into two sets: the skin ($\mathcal{S}_{\text{skin}}$) and the cloth ($\mathcal{S}_{\text{cloth}}$), otherwise we consider all vertices as cloth ($\mathcal{S}_{\text{cloth}} = \mathcal{S}$). Here we use the segmentation method in [30], see Sup. Mat. for more details. The outputs of our method are: a personalized static template shape \mathbf{T}_{Fu} , the per frame poses θ_k , and the per frame detailed template shapes $\mathbf{T}_{\text{Est}}^k$. Ideally, pose dependent shape changes should be explained by \mathbf{T}_{Fu} and the pose deformation model; however, in practice models deviate from real data. Therefore, we allow our result $\mathbf{T}_{\text{Est}}^k$ to slightly vary over time. This allows us to capture time changing details, e.g. facial details, present in the data, which the model can not represent.

Given a single scan we obtain the shape by minimizing a *single-frame objective* function (Sec. 4.1) that constrains the scan cloth points to be outside of the body, and penalizes deviations from the body to skin parts. However, estimating the shape from a single scan is an under-constrained problem. Fortunately, when all the information in a sequence is considered, the underlying shape is more constrained, as

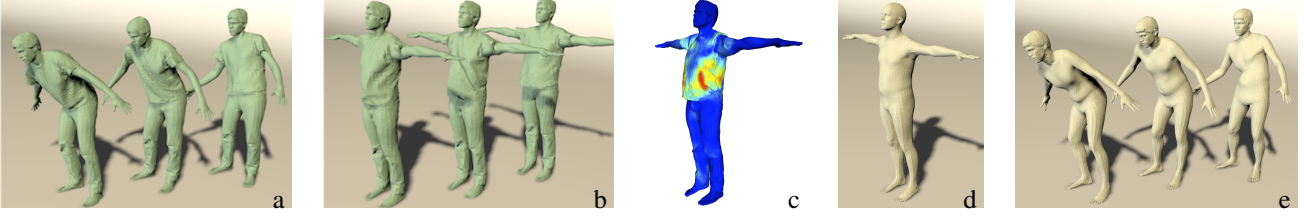


Figure 2: a) Cloth alignments b) Unposed alignments c) Fusion scan d) Fusion shape e) Posed and tracked shape. Overview: three example frames are shown. Notice the match in the cloth wrinkles between posed a) and unposed b) alignments. Different time frames provide different constraints in the unposed space. The fusion scan is the union of the frame wise unposed alignments. Color code indicates variance for that region. From the fusion scan c) we obtain the fusion shape d).



Figure 3: Skin term weights. a) alignment segmentation (red: skin, blue: cloth) b) geodesic distance to the closest cloth vertex on the alignment c) broken result with unsmooth neck and arms d) smooth result.

different poses will make the cloth tight to the body in different parts. In order to exploit such rich temporal information we first bring all input scans into correspondence. As a result we obtain a set of posed registrations and unposed template registrations (see Fig. 2 a and b). The union of the unposed templates creates the *fusion scan* (Fig. 2 c). We use it to estimate a single shape, that we call the *fusion shape* (Fig. 2 d). Since all temporal information is fused into a single fusion scan, we can estimate the fusion shape using the same single-frame objective function. Using the fusion shape template as a prior, we can accurately estimate the pose and shape of the sequence. In Fig. 2 we show the different steps of the method. The results of each stage are obtained using variants of the same single-frame objective.

4.1. Single-Frame Objective

We define the single-frame objective function as:

$$E(\mathbf{T}_{\text{Est}}, M(\boldsymbol{\beta}, 0), \boldsymbol{\theta}; \mathcal{S}) = \lambda_{\text{skin}} E_{\text{skin}} + E_{\text{cloth}} + \lambda_{\text{cpl}} E_{\text{cpl}} + \lambda_{\text{prior}} E_{\text{prior}},$$

where E_{skin} is the skin term, E_{cloth} is the cloth term, E_{cpl} is the model coupling term and E_{prior} includes prior terms for pose, shape, and translation. $M(\boldsymbol{\beta}, 0) = \mathbf{T}_{\mu} + B_s(\boldsymbol{\beta})$; \mathbf{T}_{μ} is the default template of the SMPL model, and $\boldsymbol{\beta}$ are the coefficients of the shape space, see Eq. (2). Next we describe each of the terms.

Skin term: We penalize deviations from the model to scan points labeled as skin $\mathbf{s}_i \in \mathcal{S}_{\text{skin}}$ (see Fig. 3). A straightforward penalty applied to only skin points creates a discontinuity at the boundaries, which leads to poor re-

sults (Fig. 3 c). In order to make the cost function smooth, we first compute the geodesic distance of a point in the alignment to the closest cloth point, and we apply a logistic function to map geodesic distance values between 0 and 1 (Fig. 3 b). We name this function $g(\mathbf{x}) : \mathbb{R}^3 \mapsto [0, 1]$. The resulting value is propagated to the scan points by nearest distance, and used to weight each scan residual. This way, points close to skin-cloth boundaries have a smooth decreasing weight. This effectively makes the function smooth and robust to inaccurate segmentations (Fig. 3 d).

$$E_{\text{skin}}(\mathbf{T}_{\text{Est}}, \boldsymbol{\theta}; \mathcal{S}) = \sum_{\mathbf{s}_i \in \mathcal{S}_{\text{skin}}} g(\mathbf{s}_i) \rho(\text{dist}(\mathbf{s}_i, \mathcal{M}(\mathbf{T}_{\text{Est}}, \boldsymbol{\theta}))), \quad (3)$$

where dist is a point to surface distance, and $\rho(\cdot)$ is Geman-McClure penalty function. Note that $\text{dist}(\cdot)$ is computing the closest primitive on the mesh $\mathcal{M}(\mathbf{T}_{\text{Est}}, \boldsymbol{\theta})$, triangle, edge or point; analytic derivatives are computed accordingly in each case.

Cloth term: The cloth objective consists of two terms: $E_{\text{cloth}} = \lambda_{\text{outside}} E_{\text{outside}} + \lambda_{\text{fit}} E_{\text{fit}}$. The *outside* term penalizes cloth points penetrating the mesh and the *fit* term encourages the mesh to remain close to the cloth surface. This is in contrast to previous work [45] that assumes a closed scan and pushes the model inside. Since scans are not closed surfaces we just penalize cloth points penetrating our closed registration surface. Therefore, the approach is general to point clouds. The outside term is mathematically the sum of penalties for every scan point labeled as cloth $\mathbf{s} \in \mathcal{S}_{\text{cloth}}$ that penetrates the shape mesh:

$$E_{\text{outside}}(\mathbf{T}_{\text{Est}}, \boldsymbol{\theta}; \mathcal{S}) = \sum_{\mathbf{s}_i \in \mathcal{S}_{\text{cloth}}} \delta_i \text{dist}(\mathbf{s}_i, \mathcal{M}(\mathbf{T}_{\text{Est}}, \boldsymbol{\theta}))^2, \quad (4)$$

where δ_i is an indicator function returning 1 if the scan point \mathbf{s}_i lies inside the mesh and 0 otherwise. The activation δ_i is easily obtained by computing the angle between the mesh surface normal and the vector connecting the scan vertex and the closest point in the mesh.

Minimization of the outside term alone can make the shape excessively thin. Hence, the fit term E_{fit} is used to

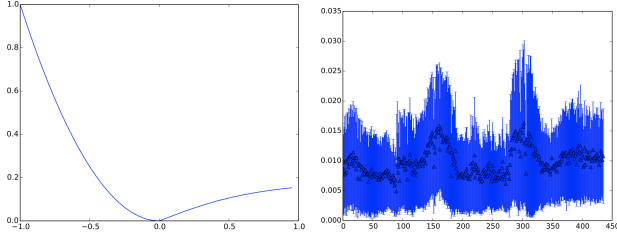


Figure 4: Left: Cloth term. The x-axis is the signed distance between $s \in \mathcal{S}_{\text{cloth}}$ and $\mathcal{M}(\mathbf{T}_{\text{Est}}, \theta)$. Points inside (negative) have a quadratic penalty, while points outside are penalized using a robust Geman-McClure function. Right: Root mean squared error and standard deviation between single-frame estimations and the ground truth. Results have significant dispersion depending on pose. (Results for subject 00005, motion “hips” and clothing style “soccer”).

maintain the volume of the naked model. Every cloth scan vertex pays a penalty if it deviates from the body. Since we want to be robust to wide clothing, we define E_{fit} as a Geman-McClure cost function. With this robust cost function, points far away (e.g. points in skirt or wide jacket) pay a small nearly-constant penalty. The resulting cloth term is illustrated in the left part of Fig. 4.

Coupling term: Optimizing only E_{skin} and E_{cloth} results in very unstable results because no human anthropometric constraints are enforced. Therefore, we constrain the template \mathbf{T}_{Est} to remain close to the statistical shape body model

$$E_{\text{cpl}}(\mathbf{T}_{\text{Est}}, M(0, \beta)) = \|\text{diag}(\mathbf{w})(\mathbf{T}_{\text{Est},e} - M(0, \beta)_e)\|^2 \quad (5)$$

where the diagonal matrix $\text{diag}(\mathbf{w})$ simply increases the coupling strength for parts like hands and feet where the scans are noisier. Coupling is performed on edges indicated by underscript e . Since we are jointly optimizing \mathbf{T}_{Est} , and β , the model of the shape is pulled towards \mathbf{T}_{Est} and vice versa. The result of the optimization is a detailed estimation \mathbf{T}_{Est} and a model representation of the shape β .

Prior term: The pose is regularized with a Gaussian prior computed from the pose training set of [20]. Specifically we enforce a Mahalanobis distance prior on the pose:

$$E_{\text{prior}}(\theta) = (\theta - \mu_{\theta})^T \Sigma_{\theta}^{-1} (\theta - \mu_{\theta}) \quad (6)$$

where the mean μ_{θ} and covariance Σ_{θ} are computed from the pose training set. A similar prior can be enforced on the shape space coefficients β but we found it did not make a significant difference.

To optimize the single-frame objective we compute the derivatives using the autodifferentiation tool Chumpy [19]. We use the “dogleg” gradient-based descent minimization method [24].

4.2. Fusion Shape Estimation

The problem with the single-frame objective is two fold: the temporal information is disregarded and the frame wise shape changes over time depending on the pose. This can be seen in the right part of Fig. 4. The straightforward approach is to extend the single-frame objective to multiple frames and optimize jointly a single \mathbf{T}_{Est} , β and the N_{frames} poses $\{\theta^k\}_{k=1}^{N_{\text{frames}}}$. Unfortunately, our scans have around 150,000 points, and optimizing all poses jointly makes the optimization highly inefficient and memory intensive. Furthermore, slight miss-alignments in pose make the shape shrink too much. Hence, we propose an effective and more efficient solution. We first sequentially register all the scans to a single clothed template. For registration we use the single-frame objective function with no cloth term. From this we obtain a template clothed per frame $\mathbf{T}_{\text{cloth}}^k$. The interesting thing is that the set of $\mathbf{T}_{\text{cloth}}^k$ templates contain the non-rigid cloth motion with the motion due to pose factored out, see Fig. 2. The naked shape should lie inside all the clothed templates. Hence we gather all templates and treat them as a single point cloud that we call the fusion scan $\mathcal{S}_{\text{Fu}} = \{\mathbf{T}_{\text{cloth}}^k\}_{k=1}^{N_{\text{frames}}}$. Hence, we can easily obtain a single shape estimate by using again the single-frame objective

$$\mathbf{T}_{\text{Fu}} = \arg \min_{\mathbf{T}_{\text{Est}}, \beta} E(\mathbf{T}_{\text{Est}}, M(\beta, 0), 0; \mathcal{S}_{\text{Fu}}). \quad (7)$$

The obtained fusion shapes are already quite accurate because the fusion scan carves the volume where the naked shape should lie.

4.3. Pose and Shape Tracking

Finally we use the fusion shape to perform tracking regularizing the estimated shapes to remain close to the fusion shape. We achieve that by coupling the estimations towards the fusion shape instead of the SMPL model shape space. So the coupling term is now $E_{\text{cpl}}(\mathbf{T}_{\text{Est}}, M(0, \beta)) \mapsto E_{\text{cpl}}(\mathbf{T}_{\text{Est}}, \mathbf{T}_{\text{Fu}})$. Detailed shapes are obtained minimizing

$$\mathbf{T}_{\text{Est}}^k = \arg \min_{\mathbf{T}_{\text{Est}}, \theta} E(\mathbf{T}_{\text{Est}}, \mathbf{T}_{\text{Fu}}, \theta, \mathcal{S}^k). \quad (8)$$

5. Datasets

In this section we present our new BUFF dataset. We start by introducing the previous dataset.

5.1. Existing Dataset

The INRIA dataset [45] consists of sequences of meshes obtained by applying a visual hull reconstruction to a 68-color-camera (4M pixels) system at 30fps. The dataset includes sparse motion capture (MoCap) data of 6 subjects (3 female, 3 male) captured in 3 different motions and 3 clothing styles each. The texture information of the scans is not available. Fig. 5 a) and b) show frames from the dataset. The “ground truth shape” of a subject is estimated by fitting

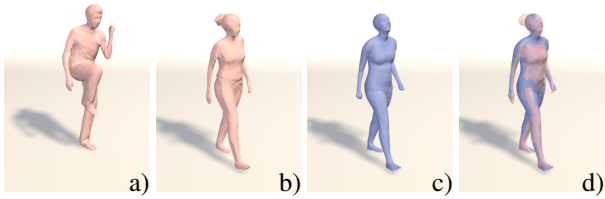


Figure 5: INRIA Dataset: a) and b) scan samples; c) estimated “ground truth” shape for b); d) overlay of b) and c).

the S-SCAPE [17] model to the “tight clothes” sequence.

As shown in Fig. 5 c) and d), their statistical body model does not capture the individual details of the human shape. The main drawback of this “ground truth shape” is that it biases the evaluation to the model space. All recovered details, that fall outside the model, will be penalized in the quantitative evaluation. Alternatively, one could compare the obtained shape directly with the visual hull. Unfortunately, visual hulls are not very accurate, sometimes over-estimating, sometimes under-estimating the true shape. While relevant for qualitative evaluation of the shape estimates, we believe that this dataset is limited for quantitative evaluation. This motivated us to create BUFF, which preserves details and allows quantitative evaluation of the shape estimation.

5.2. BUFF

To create BUFF, we use a custom-built multi-camera active stereo system (3dMD LLC, Atlanta, GA) to capture temporal sequences of full-body 3D scans at 60 frames per second. The system uses 22 pairs of stereo cameras, 22 color cameras, 34 speckle projectors and arrays of white-light LED panels. The projectors and LEDs flash at 120fps to alternate between stereo capture and color capture. The projected texture pattern makes stereo matching more accurate, dense, and reliable compared with passive stereo methods. The stereo pairs are arranged to give full body capture for a range of activities, enabling us to capture people in motion. The system outputs 3D meshes with approximately 150K vertices on average.

BUFF consists of 6 subjects, 3 male and 3 female wearing 2 clothing styles: a) t-shirt and long pants and b) a soccer outfit, see Fig. 6. The sequence lengths range between 4 to 9 seconds (200-500 frames) totaling 13,632 3D scans.

As shown by previous state of the art methods [2], skin color is a rich source of information. We thus include texture data in our dataset. All subjects gave informed written consent before participating in the study. One subject did not give permission to release their data for research purposes. Consequently, the public BUFF dataset consists of 11,054 scans.



Figure 6: BUFF Dataset: To validate our method we captured a new dataset including 6 subjects wearing different clothing styles and different motion patterns.



Figure 7: Top row: Subject 03223 performing the “A-T-U-Squat” motion in “minimal clothing”. These scans are used to compute the ground truth MCS \mathbf{T}_{GT} . Bottom row: triplet of scan, estimated ground truth model and both overlaid (frame 000150). The proposed ground truth shape captures the details present in the scan point cloud.

5.2.1 Computing the Ground Truth Shapes

In order to estimate the “ground truth” shapes in our dataset we capture the subjects in “minimal clothing” (tight fitting sports underwear). Participants performed an “A-T-U-Squat” motion (first row of Fig. 7). For all frames, we use our method to fit the data considering all vertices as “skin” (see Sec. 4.1). We obtain N template meshes \mathbf{T}_{μ}^i , which do not perfectly match, because the pose and the shape are not perfectly factorized in the SMPL model [20]. We define the \mathbf{T}_{GT} as the mean of the estimates of all frames.

We quantitatively estimated the accuracy of our “ground truth” MCS estimations. More than half of the scan points are within 1.5mm distance of \mathbf{T}_{GT} and 80% closer than 3mm. Because the scan point cloud has some noise (e.g. points of the scanning platform, poorly reconstructed hands, hair,...), we believe the computed \mathbf{T}_{GT} provides an accurate explanation of the subjects “minimally clothed shape”. In the bottom row of Fig. 7 we qualitatively show the visual accuracy of the computed ground truth MCS.

6. Experiments

In this section we present the evaluation measures and the obtained qualitative and quantitative results.

	t-shirt, long pants						soccer outfit					Avg.
<i>tilt twist left</i>	00005	00096	00032	00057	03223	00114	00005	00032	00057	03223	00114	Avg.
Yang <i>et al.</i> [45]	17.29	18.68	13.76	17.94	17.90	15.42	16.77	16.96	18.52	20.41	16.40	17.27
fusion mesh	2.58	2.89	2.39	2.53	2.43	2.38	2.50	2.63	2.37	2.28	2.28	2.47
detailed	2.52	2.83	2.36	2.44	2.27	2.31	2.44	2.59	2.28	2.17	2.23	2.40
<i>hips</i>	00005	00096	00032	00057	03223	00114	00005	00032	00057	03223	00114	Avg.
Yang <i>et al.</i> [45]	21.02	21.66	15.77	17.87	21.84	18.05	22.52	16.81	19.55	22.03	17.54	19.51
fusion mesh	2.81	2.71	2.66	2.66	2.54	2.65	2.65	2.63	2.58	2.50	2.57	2.63
detailed	2.75	2.64	2.63	2.55	2.40	2.56	2.58	2.59	2.50	2.38	2.51	2.55
<i>shoulders mill</i>	00005	00096	00032	00057	03223	00114	00005	00032	00057	03223	00114	Avg.
Yang <i>et al.</i> [45]	18.77	19.02	18.02	16.50	18.15	14.78	18.74	17.88	15.80	19.47	16.37	17.59
fusion mesh	2.56	2.92	2.74	2.46	2.42	2.69	2.89	2.87	2.37	2.44	2.58	2.63
detailed	2.49	2.85	2.72	2.37	2.26	2.59	2.83	2.82	2.28	2.33	2.51	2.55

Table 1: Numerical results for the estimated naked shapes. We report the root mean squared error in millimeters of point to surface distance between the posed GT mesh and the method result. The best value is highlighted in bold.

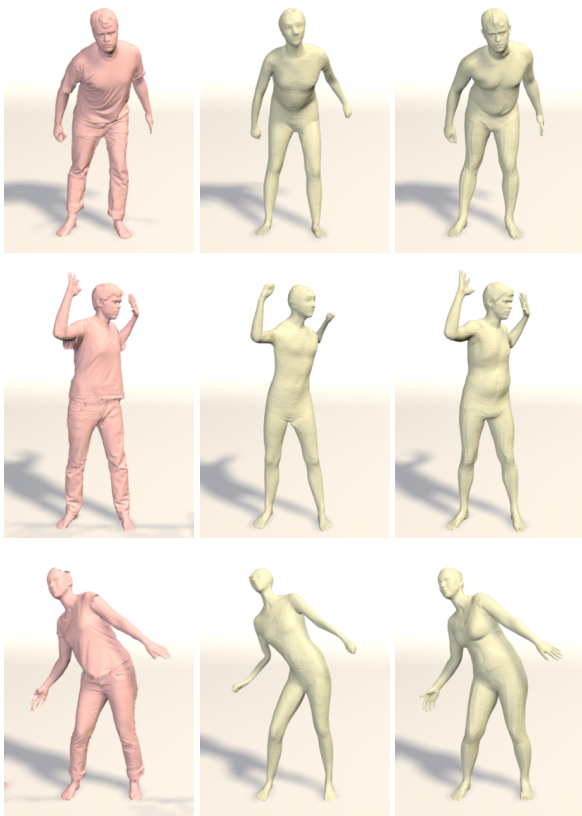


Figure 8: Qualitative pose estimation results on BUFF dataset. Left to right: scan, Yang *et al.* [45], our result.

6.1. Evaluation on Previous Datasets

We evaluate our results quantitatively on pose estimation, and qualitatively on shape estimation in the INRIA dataset [45]. We estimated the shape for all tight clothes sequences. To initialize the pose we use the automatically computed landmarks of [49]. We compare the Mo-Cap marker locations to the corresponding vertices of our

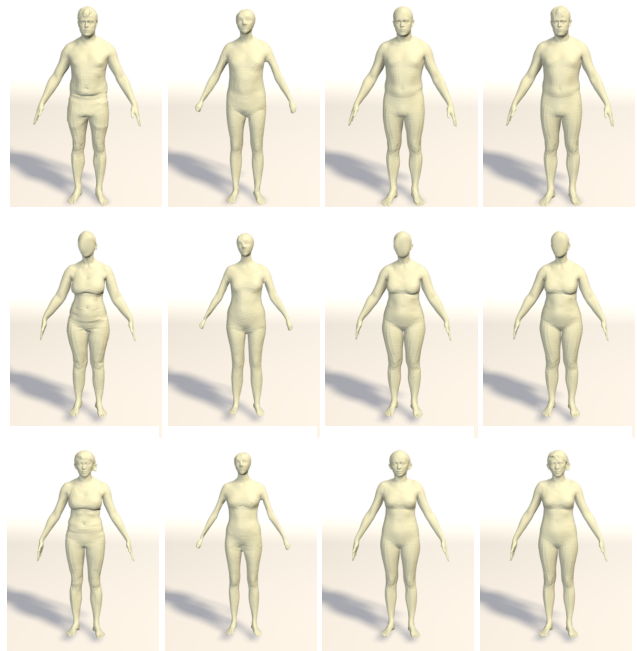


Figure 9: Qualitative shape estimation results on BUFF dataset. Left to right: ground truth shape, Yang *et al.* [45], fusion shape (ours), detailed shape (ours).

results and [45]. 10 frames sampled evenly from the first 50 frames of each sequence are used to obtain 10 correspondence sets. In Fig. 10 we report the average errors for all frames and correspondence sets; our method achieves state of the art results in pose estimation. In the first row of Fig. 11 we present qualitative results for the INRIA dataset. Our results are plausible estimates of minimally-clothed shapes. In the second row of Fig. 11 we qualitatively compare our results to previous work on the dancer sequence from [8]. Our results visually outperform previous state of the art. Additional results are presented in

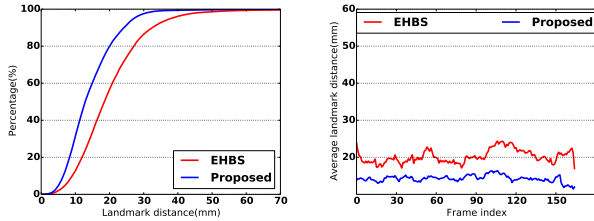


Figure 10: Pose estimation accuracy on INRIA dataset. Left: Percentage of landmarks with error less than a given distance (horizontal axis) in mm. Right: per frame average landmark error. EHBS is [45].



Figure 11: Top: Qualitative results on the INRIA dataset; scan (pink), our result. Bottom: Qualitative comparison on Dancer sequence [8]. From left to right: scan, Wuhrer *et al.* [44], Yang *et al.* [45], our result.

the Sup. Mat; results are best seen in the video included at <http://buff.is.tue.mpg.de/>.

6.2. Evaluation on BUFF

To quantitatively evaluate the results in BUFF, we compare the estimated body shapes with the computed ground truth meshes (Sec. 5.2.1). We define the “registration error” of the estimated body shape as the scan-to-model distance with respect to the groundtruth MCS. Given a result mesh S , we optimize for pose θ so that the posed \mathbf{T}_{GT} best fits S . Then the error between S and the posed \mathbf{T}_{GT} is computed as the Euclidean distance between each vertex in \mathbf{T}_{GT} and its closest point on the surface S .

In Tab. 1 we show the numerical results obtained by [45], our fusion mesh, and our detailed mesh. The results obtained with our method systematically outperform the best state of the art method. In Fig. 8 we show qualitative results on the pose estimations. Our method properly recovers the

scan pose, and visually outperforms [45], especially in elbow and shoulder estimations. In Fig. 9 we show qualitative results of the shape estimations. The proposed fusion shape accurately recovers the body shape, while the detailed shape is capable of capturing the missing details. While the detailed shape is visually closer to the ground truth, quantitatively, both results are very similar, see Tab. 1. In order to evaluate the robustness of the method when skin/cloth segmentation is not available we evaluate our method labeling the scans of BUFF as *all cloth*. While the obtained shapes are less detailed, they are still accurate. The obtained mean error is $\approx 3\text{mm}$ (all cloth) compared to $\approx 2.5\text{mm}$ (detailed) when using our proposed full method. Additional results and baselines are presented in the Sup. Mat.

Computation time and parameters. The single-frame objective computation takes ~ 10 seconds per frame, fusion mesh is computed in ~ 200 seconds. The detail refinement takes ~ 40 seconds per frame. Sequences are computed in parallel and computations are executed on an 3GHz 8-Core Intel Xeon E5. Shapes on BUFF were estimated using $\lambda_{\text{skin}} = 100$, $\lambda_{\text{outside}} = 100$, $\lambda_{\text{fit}} = 3$ and $\lambda_{\text{cpl}} = 1$. For INRIA data we decreased the fit term $\lambda_{\text{fit}} = 1$ to be more robust to wide clothing. More details in Sup. Mat.

7. Conclusion

We introduced a novel method to estimate a detailed body shape under clothing from a sequence of 3D scans. Our method exploits the information in a sequence by fusing all clothed registrations into a single frame. This results in very accurate shape estimates. We also contribute a new dataset (BUFF) of high resolution 3D scan sequences of clothed people as well as ground truth minimally-clothed shapes for each subject. BUFF is the first dataset of high quality 4D scans of clothed people; it will enable accurate quantitative evaluation of body shape estimation. Results on BUFF reveal a clear improvement with respect to the state of the art. One of the limitations of the presented approach is the underestimation of female breast shape; this appears to be a limitation of SMPL. SMPL does not take into account soft tissue deformations of the body; future work will incorporate soft tissue deformation models [31] to obtain even more accurate results. In addition, using the obtained minimally-clothed shapes and cloth alignments we plan to learn a model of cloth deviations from the body. To collect data to learn such model, we will investigate the use of Inertial Measurement Units (IMU) [41, 40] to obtain even more accurate estimates of pose under wide clothing.

8. Acknowledgments

We thank the authors of [21] and [44] for providing their results for comparison. We especially thank the authors of [45] for running their method on BUFF.

References

- [1] D. Anguelov, P. Srinivasan, D. Koller, S. Thrun, J. Rodgers, and J. Davis. Scape: shape completion and animation of people. In *ACM Transactions on Graphics (TOG)*, volume 24, pages 408–416. ACM, 2005. 1, 2
- [2] A. O. Balan and M. J. Black. The naked truth: Estimating body shape under clothing. In *European Conference on Computer Vision*, pages 15–29. Springer, 2008. 1, 3, 6
- [3] C. Barron and I. A. Kakadiaris. Estimating anthropometry and pose from a single image. In *Computer Vision and Pattern Recognition, 2000. Proceedings. IEEE Conference on*, volume 1, pages 669–676. IEEE, 2000. 2
- [4] F. Bogo, M. J. Black, M. Loper, and J. Romero. Detailed full-body reconstructions of moving people from monocular RGB-D sequences. In *International Conference on Computer Vision (ICCV)*, pages 2300–2308, Dec. 2015. 2
- [5] F. Bogo, A. Kanazawa, C. Lassner, P. Gehler, J. Romero, and M. J. Black. Keep it SMPL: Automatic estimation of 3D human pose and shape from a single image. In *Computer Vision – ECCV 2016, Lecture Notes in Computer Science*. Springer International Publishing, Oct. 2016. 3
- [6] A. O. Balan, L. Sigal, M. J. Black, J. E. Davis, and H. W. Haussecker. Detailed human shape and pose from images. In *2007 IEEE Conference on Computer Vision and Pattern Recognition*, pages 1–8. IEEE, 2007. 2
- [7] Y. Chen, Z. Liu, and Z. Zhang. Tensor-based human body modeling. In *Proceedings of the IEEE Conference on Computer Vision and Pattern Recognition*, pages 105–112, 2013. 2
- [8] E. De Aguiar, C. Stoll, C. Theobalt, N. Ahmed, H.-P. Seidel, and S. Thrun. Performance capture from sparse multi-view video. 27(3):98, 2008. 7, 8
- [9] E. Dibra, C. Öztireli, R. Ziegler, and M. Gross. Shape from selfies: Human body shape estimation using cca regression forests. In *European Conference on Computer Vision*, pages 88–104. Springer, 2016. 3
- [10] M. Dou, S. Khamis, Y. Degtyarev, P. Davidson, S. R. Fanello, A. Kowdle, S. O. Escolano, C. Rhemann, D. Kim, J. Taylor, et al. Fusion4d: Real-time performance capture of challenging scenes. *ACM Transactions on Graphics (TOG)*, 35(4):114, 2016. 3
- [11] J. Gall, B. Rosenhahn, T. Brox, and H.-P. Seidel. Optimization and filtering for human motion capture. *International journal of computer vision*, 87(1-2):75–92, 2010. 2
- [12] D. M. Gavrila and L. S. Davis. 3-d model-based tracking of humans in action: a multi-view approach. In *Computer Vision and Pattern Recognition, 1996. Proceedings CVPR’96, 1996 IEEE Computer Society Conference on*, pages 73–80. IEEE, 1996. 2
- [13] P. Guan, O. Freifeld, and M. J. Black. A 2d human body model dressed in eigen clothing. In *European conference on computer vision*, pages 285–298. Springer, 2010. 3
- [14] N. Hasler, C. Stoll, B. Rosenhahn, T. Thormählen, and H.-P. Seidel. Estimating body shape of dressed humans. *Computers & Graphics*, 33(3):211–216, 2009. 3
- [15] N. Hasler, C. Stoll, M. Sunkel, B. Rosenhahn, and H.-P. Seidel. A statistical model of human pose and body shape. In *Computer Graphics Forum*, volume 28, pages 337–346. Wiley Online Library, 2009. 2
- [16] T. Helten, A. Baak, G. Bharaj, M. Müller, H.-P. Seidel, and C. Theobalt. Personalization and evaluation of a real-time depth-based full body tracker. In *2013 International Conference on 3D Vision-3DV 2013*, pages 279–286. IEEE, 2013. 2
- [17] A. Jain, T. Thormählen, H.-P. Seidel, and C. Theobalt. Moviereshape: Tracking and reshaping of humans in videos. 29(6):148, 2010. 2, 6
- [18] C. Lassner, J. Romero, M. Kiefel, F. Bogo, M. J. Black, and P. V. Gehler. Unite the people: Closing the loop between 3d and 2d human representations. In *Proc. of the IEEE Conference on Computer Vision and Pattern Recognition CVPR*, 2017. 3
- [19] M. Loper. Chumpy is a python-based framework designed to handle the auto-differentiation problem. <https://pypi.python.org/pypi/chumpy>, 2015. 5
- [20] M. Loper, N. Mahmood, J. Romero, G. Pons-Moll, and M. J. Black. SMPL: A skinned multi-person linear model. *ACM Trans. Graphics (Proc. SIGGRAPH Asia)*, 34(6):248:1–248:16, Oct. 2015. 2, 3, 5, 6
- [21] A. Neophytou and A. Hilton. A layered model of human body and garment deformation. In *2014 2nd International Conference on 3D Vision*, volume 1, pages 171–178. IEEE, 2014. 3, 8
- [22] R. A. Newcombe, D. Fox, and S. M. Seitz. Dynamicfusion: Reconstruction and tracking of non-rigid scenes in real-time. In *Proceedings of the IEEE conference on computer vision and pattern recognition*, pages 343–352, 2015. 3
- [23] A. Newell, K. Yang, and J. Deng. Stacked hourglass networks for human pose estimation. *arXiv preprint arXiv:1603.06937*, 2016. 2
- [24] J. Nocedal and S. J. Wright. *Numerical Optimization*. Springer, New York, 2nd edition, 2006. 5
- [25] S. Orts-Escolano, C. Rhemann, S. Fanello, W. Chang, A. Kowdle, Y. Degtyarev, D. Kim, P. L. Davidson, S. Khamis, M. Dou, et al. Holoportation: Virtual 3d teleportation in real-time. In *Proceedings of the 29th Annual Symposium on User Interface Software and Technology*, pages 741–754. ACM, 2016. 3
- [26] S. I. Park and J. K. Hodgins. Data-driven modeling of skin and muscle deformation. *ACM Trans. Graph.*, 27(3):96:1–96:6, Aug. 2008. 2
- [27] L. Pishchulin, E. Insafutdinov, S. Tang, B. Andres, M. Andriluka, P. Gehler, and B. Schiele. Deepcut: Joint subset partition and labeling for multi person pose estimation. 2
- [28] L. Pishchulin, S. Wuhler, T. Helten, C. Theobalt, and B. Schiele. Building statistical shape spaces for 3d human modeling. [*arXiv*], March 2015. 2
- [29] R. Plankers and P. Fua. Articulated soft objects for video-based body modeling. In *International Conference on Computer Vision, Vancouver, Canada*, number CVLAB-CONF-2001-005, pages 394–401, 2001. 2
- [30] G. Pons-Moll, S. Pujades, S. Hu, and M. Black. Clothcap: Seamless 4d clothing capture and retargeting. *ACM Transactions on Graphics, (Proc. SIGGRAPH) [to appear]*, 2017. 3

- [31] G. Pons-Moll, J. Romero, N. Mahmood, and M. J. Black. Dyna: a model of dynamic human shape in motion. *ACM Transactions on Graphics (TOG)*, 34:120, 2015. 2, 8
- [32] G. Pons-Moll and B. Rosenhahn. *Model-Based Pose Estimation*, chapter 9, pages 139–170. Springer, 2011. 2
- [33] G. Pons-Moll, J. Taylor, J. Shotton, A. Hertzmann, and A. Fitzgibbon. Metric regression forests for correspondence estimation. *International Journal of Computer Vision*, pages 1–13, 2015. 2
- [34] H. Rhodin, N. Robertini, D. Casas, C. Richardt, H.-P. Seidel, and C. Theobalt. General automatic human shape and motion capture using volumetric contour cues. In *European Conference on Computer Vision*, pages 509–526. Springer, 2016. 3
- [35] B. Rosenhahn, U. Kersting, K. Powell, R. Klette, G. Klette, and H.-P. Seidel. A system for articulated tracking incorporating a clothing model. *Machine Vision and Applications*, 18(1):25–40, 2007. 3
- [36] L. Sigal, S. Bhatia, S. Roth, M. J. Black, and M. Isard. Tracking loose-limbed people. In *Computer Vision and Pattern Recognition, 2004. CVPR 2004. Proceedings of the 2004 IEEE Computer Society Conference on*, volume 1, pages I–421. IEEE, 2004. 2
- [37] D. Song, R. Tong, J. Chang, X. Yang, M. Tang, and J. J. Zhang. 3d body shapes estimation from dressed-human silhouettes. In *Computer Graphics Forum*, volume 35, pages 147–156. Wiley Online Library, 2016. 3
- [38] C. Stoll, J. Gall, E. De Aguiar, S. Thrun, and C. Theobalt. Video-based reconstruction of animatable human characters. *ACM Transactions on Graphics (TOG)*, 29(6):139, 2010. 3
- [39] C. Stoll, N. Hasler, J. Gall, H.-P. Seidel, and C. Theobalt. Fast articulated motion tracking using a sums of gaussians body model. In *2011 International Conference on Computer Vision*, pages 951–958. IEEE, 2011. 2, 3
- [40] T. von Marcard, G. Pons-Moll, and B. Rosenhahn. Human pose estimation from video and imus. *Transactions on Pattern Analysis and Machine Intelligence PAMI*, Jan. 2016. 8
- [41] T. von Marcard, B. Rosenhahn, M. Black, and G. Pons-Moll. Sparse inertial poser: Automatic 3d human pose estimation from sparse imus. *Computer Graphics Forum 36(2), Proceedings of the 38th Annual Conference of the European Association for Computer Graphics (Eurographics)*, 2017. 8
- [42] S.-E. Wei, V. Ramakrishna, T. Kanade, and Y. Sheikh. Convolutional pose machines. 2016. 2
- [43] A. Weiss, D. Hirshberg, and M. J. Black. Home 3d body scans from noisy image and range data. In *2011 International Conference on Computer Vision*, pages 1951–1958. IEEE, 2011. 2
- [44] S. Wuhrer, L. Pishchulin, A. Brunton, C. Shu, and J. Lang. Estimation of human body shape and posture under clothing. *Computer Vision and Image Understanding*, 127:31–42, 2014. 3, 8
- [45] J. Yang, J.-S. Franco, F. Hétroy-Wheeler, and S. Wuhrer. Estimation of Human Body Shape in Motion with Wide Clothing. In *European Conference on Computer Vision 2016*, Amsterdam, Netherlands, Oct. 2016. 1, 2, 3, 4, 5, 7, 8
- [46] M. Ye and R. Yang. Real-time simultaneous pose and shape estimation for articulated objects using a single depth camera. In *Proceedings of the IEEE Conference on Computer Vision and Pattern Recognition*, pages 2345–2352, 2014. 2
- [47] Q. Zhang, B. Fu, M. Ye, and R. Yang. Quality dynamic human body modeling using a single low-cost depth camera. In *2014 IEEE Conference on Computer Vision and Pattern Recognition*, pages 676–683. IEEE, 2014. 2
- [48] M. Zollhöfer, M. Nießner, S. Izadi, C. Rehmman, C. Zach, M. Fisher, C. Wu, A. Fitzgibbon, C. Loop, C. Theobalt, et al. Real-time non-rigid reconstruction using an rgb-d camera. *ACM Transactions on Graphics (TOG)*, 33(4):156, 2014. 3
- [49] S. Zuffi and M. J. Black. The stitched puppet: A graphical model of 3d human shape and pose. In *2015 IEEE Conference on Computer Vision and Pattern Recognition (CVPR)*, pages 3537–3546. IEEE, 2015. 2, 7