



Anticipation in the retina and the primary visual cortex: towards an integrated retino-cortical model for motion processing

Bruno Cessac, Selma Souihel, Matteo Di Volo, Frédéric Chavane, Alain Destexhe, Sandrine Chemla, Olivier Marre

► To cite this version:

Bruno Cessac, Selma Souihel, Matteo Di Volo, Frédéric Chavane, Alain Destexhe, et al.. Anticipation in the retina and the primary visual cortex: towards an integrated retino-cortical model for motion processing. Workshop on visuo motor integration, Jun 2019, Paris, France. hal-02150600

HAL Id: hal-02150600

<https://inria.hal.science/hal-02150600>

Submitted on 7 Jun 2019

HAL is a multi-disciplinary open access archive for the deposit and dissemination of scientific research documents, whether they are published or not. The documents may come from teaching and research institutions in France or abroad, or from public or private research centers.

L'archive ouverte pluridisciplinaire **HAL**, est destinée au dépôt et à la diffusion de documents scientifiques de niveau recherche, publiés ou non, émanant des établissements d'enseignement et de recherche français ou étrangers, des laboratoires publics ou privés.

Anticipation in the retina and the primary visual cortex : towards an integrated retino-cortical model for motion processing

Bruno Cessac, Selma Souihel
Biovision



Anticipation in the retina and the primary visual cortex : towards an integrated retino-cortical model for motion processing

Bruno Cessac, **Selma Souihel**
Biovision



Anticipation in the retina and the primary visual cortex : towards an integrated retino-cortical model for motion processing

Bruno Cessac, **Selma Souihel**
Biovision



In collaboration with :

Matteo Di Volo
Alain Destexhe



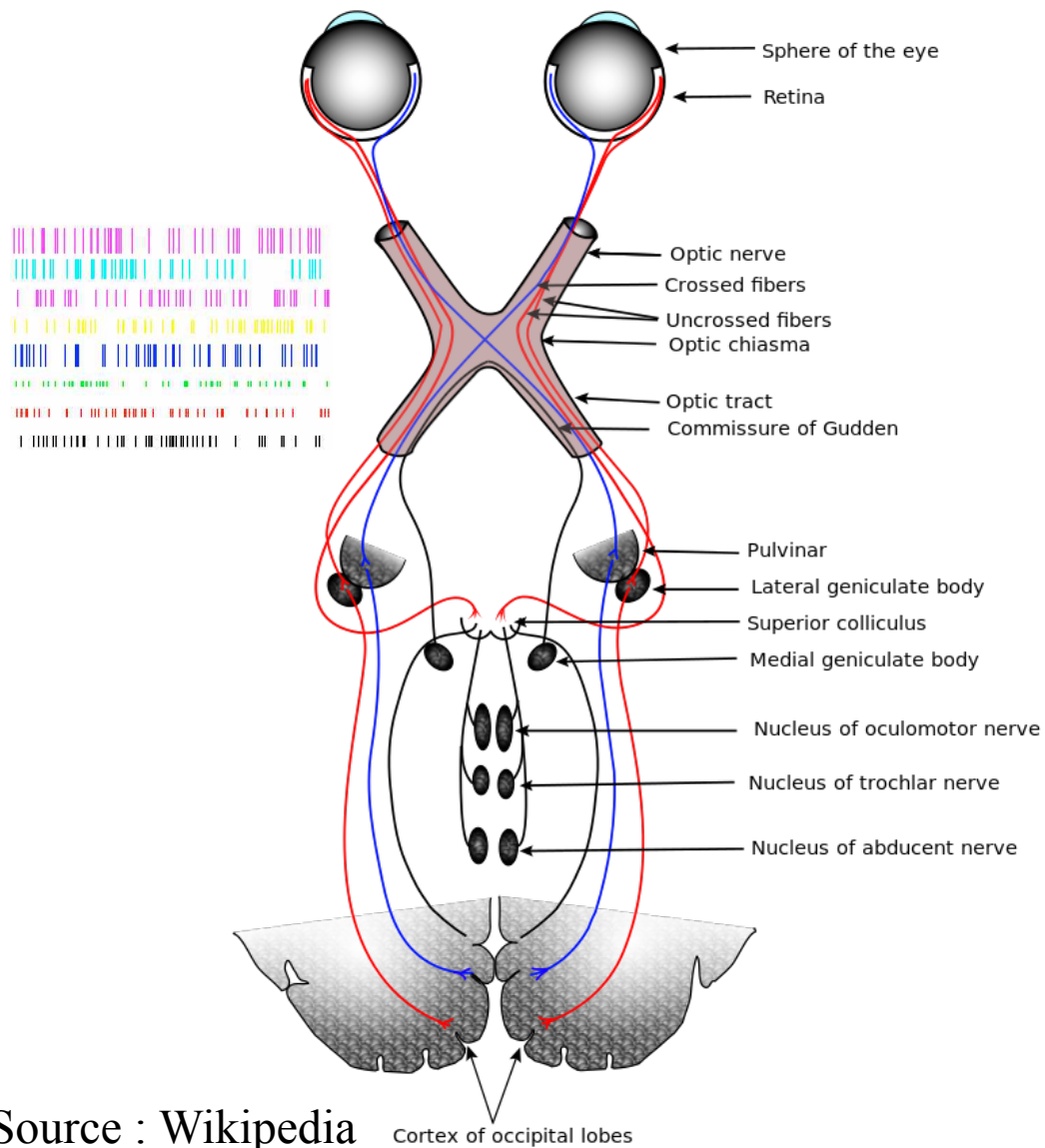
Frédéric Chavane
Sandrine Chemla



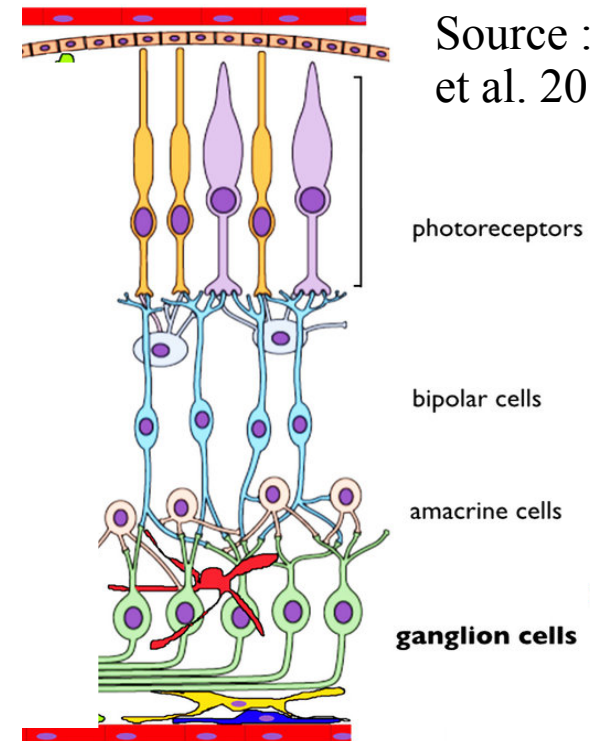
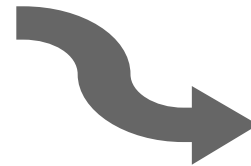
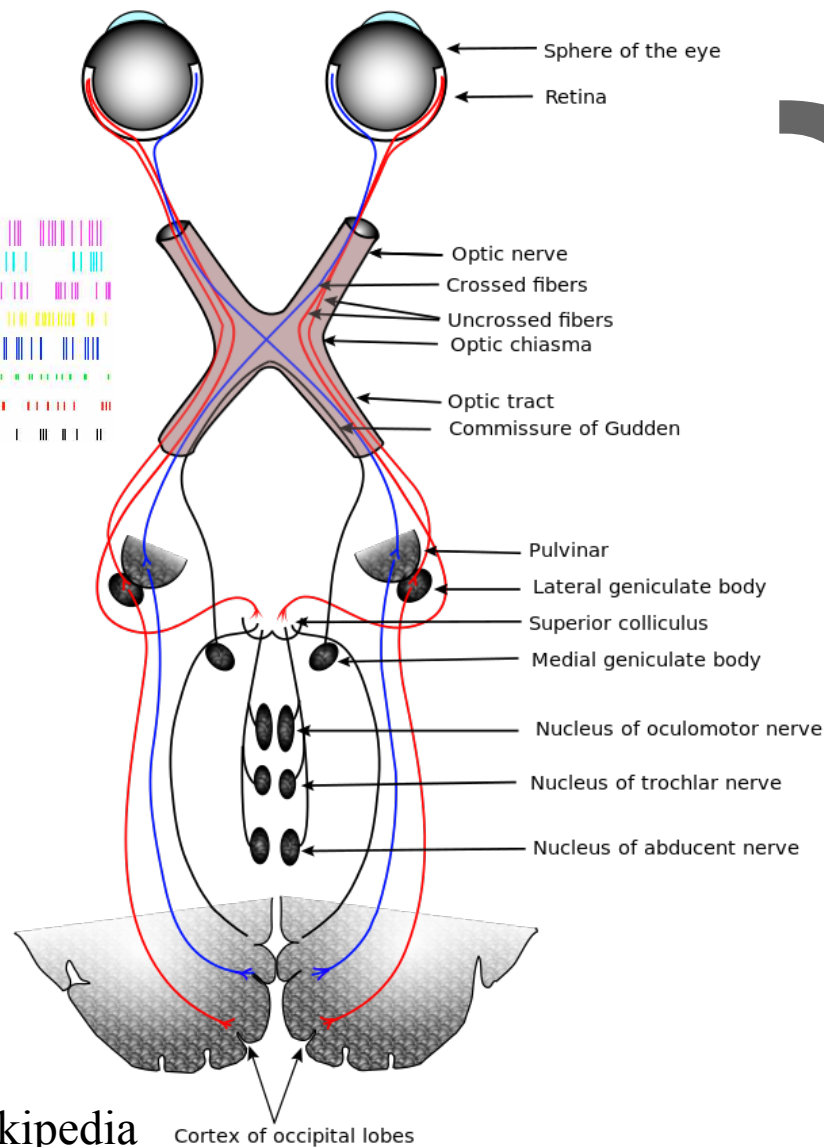
Olivier Marre



The visual flow



The visual flow

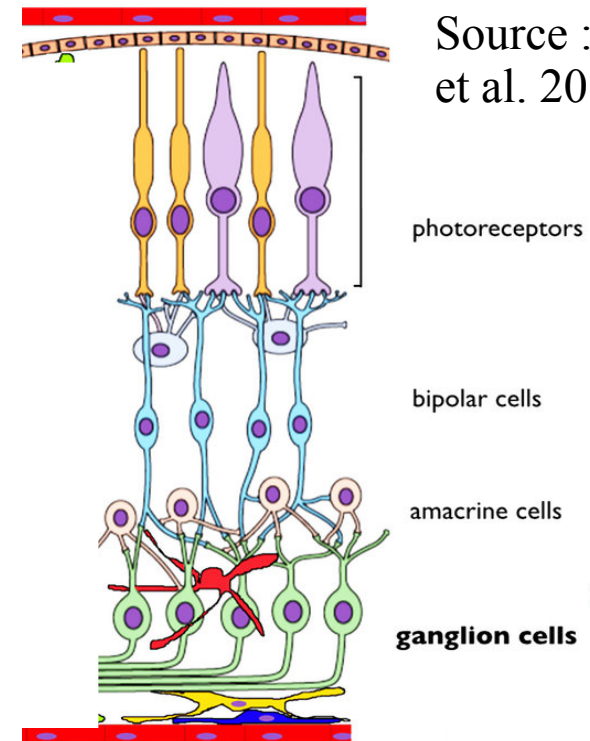
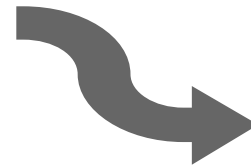
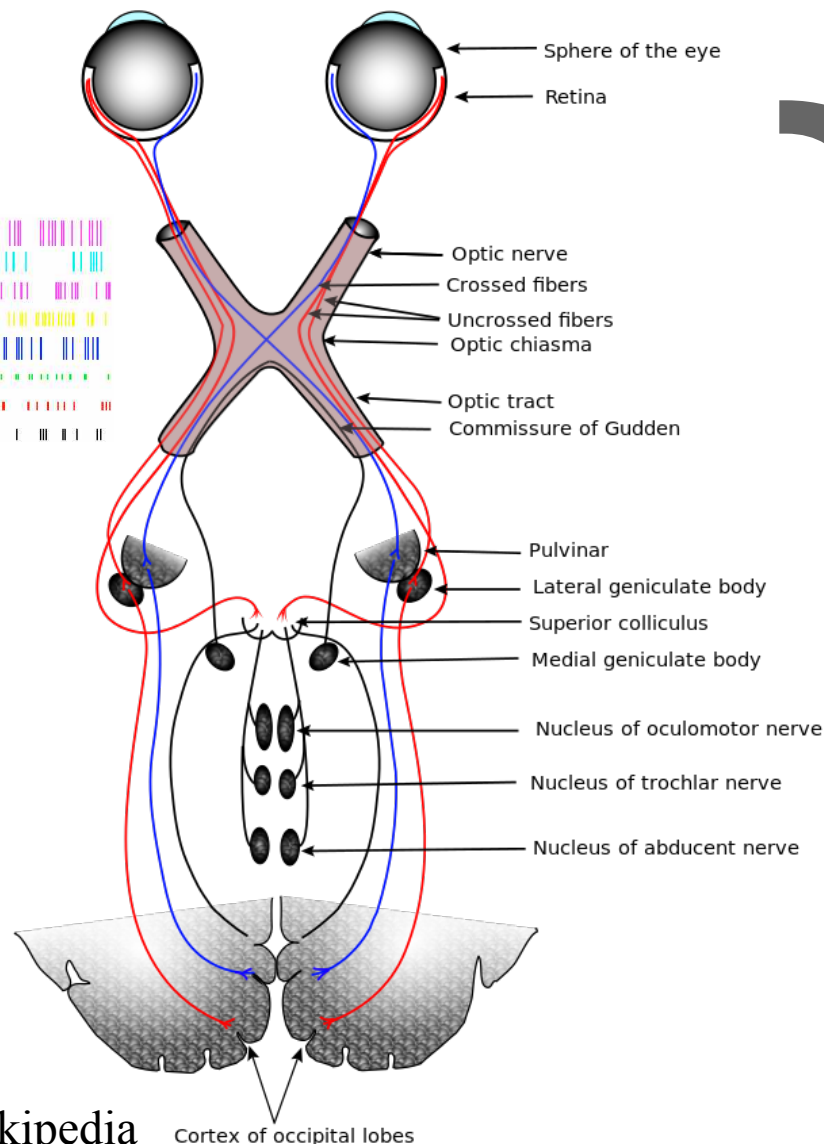


Source : Ryskamp
et al. 2014



Source : Wikipedia

The visual flow



Source : Ryskamp
et al. 2014

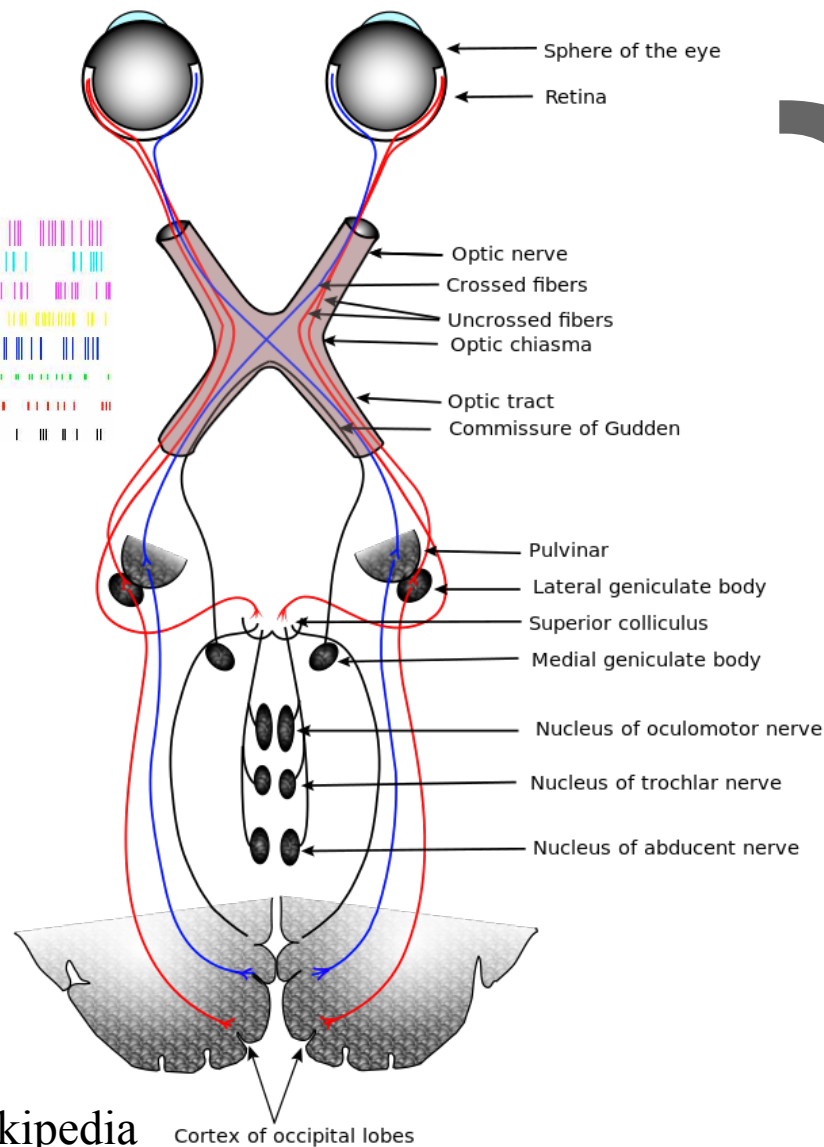


Upcoming light

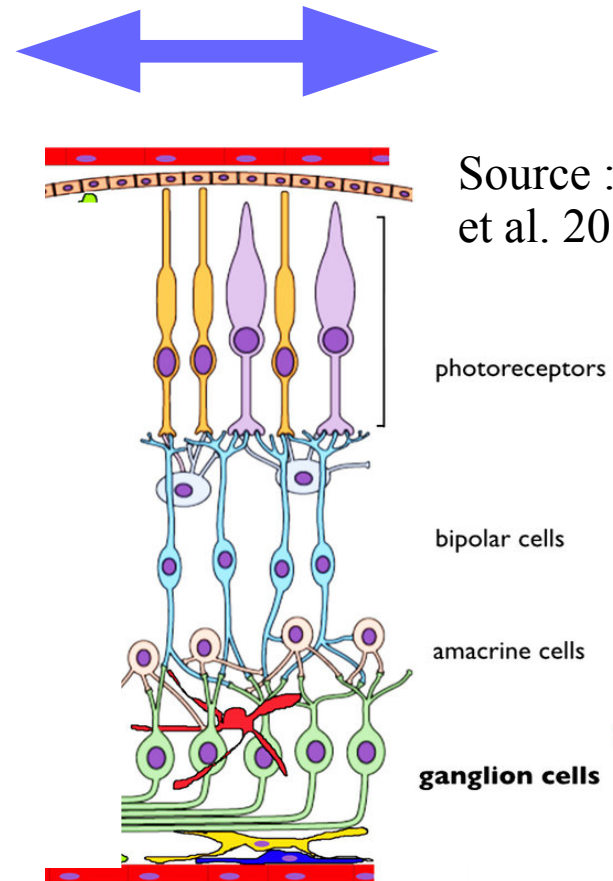
Source : Wikipedia

Cortex of occipital lobes

The visual flow



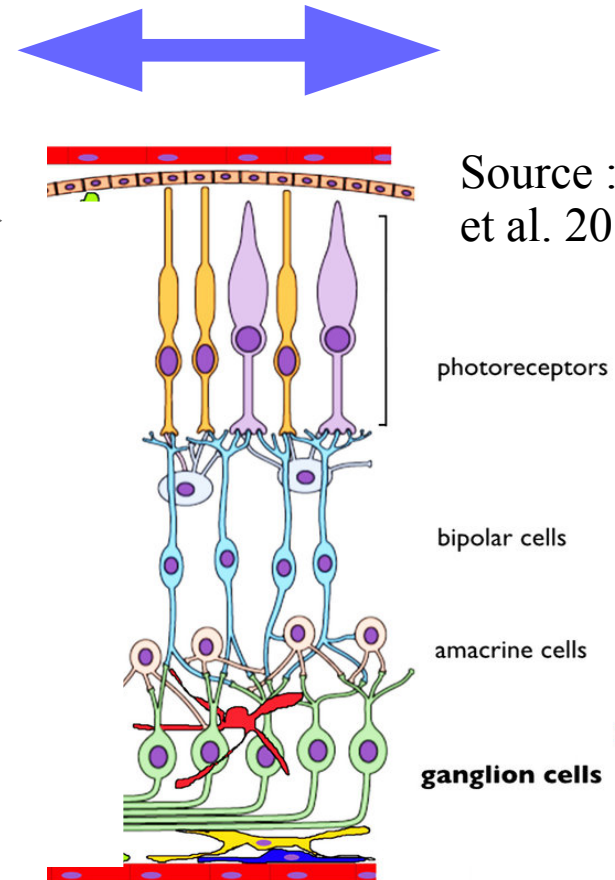
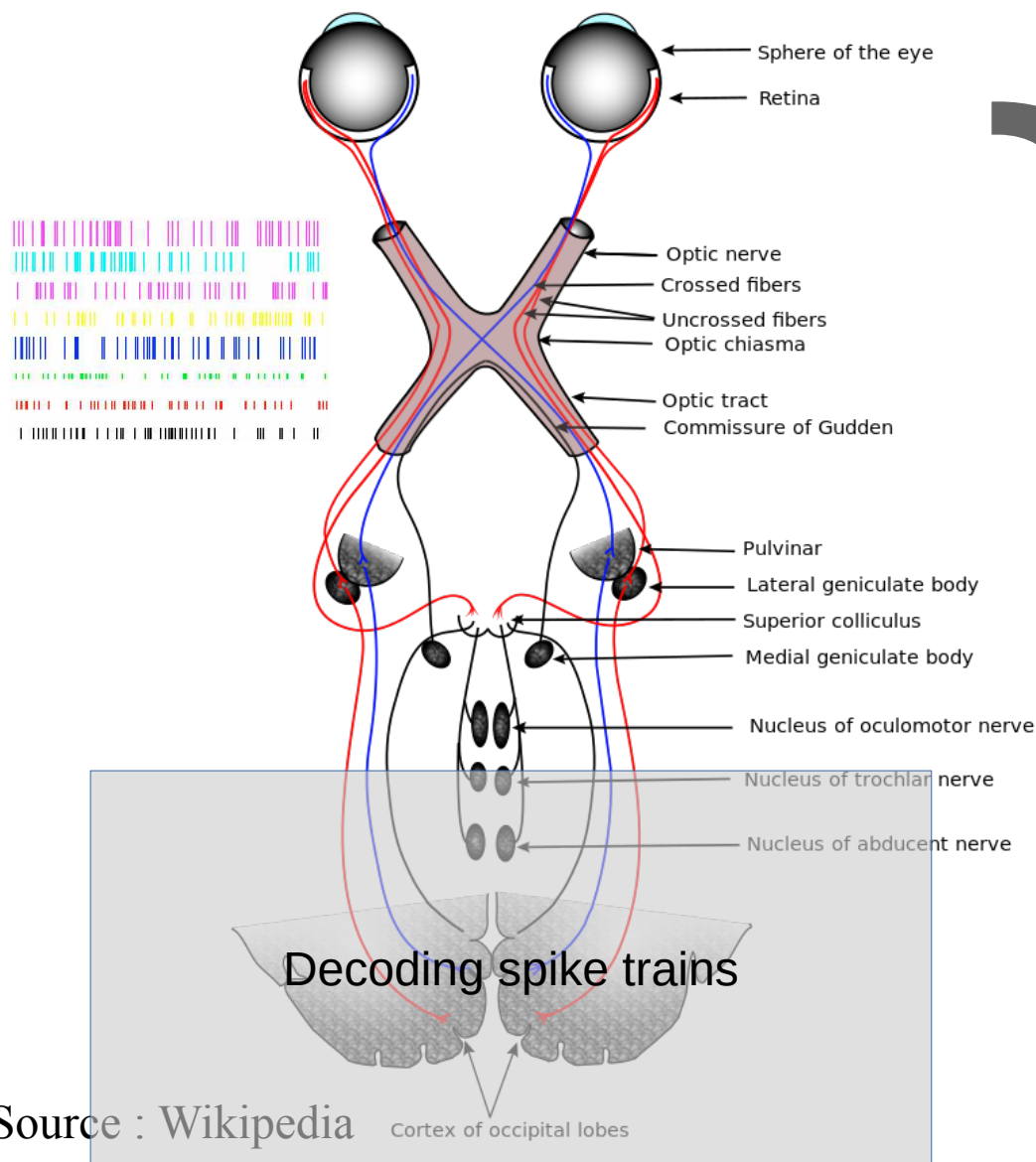
Source : Wikipedia



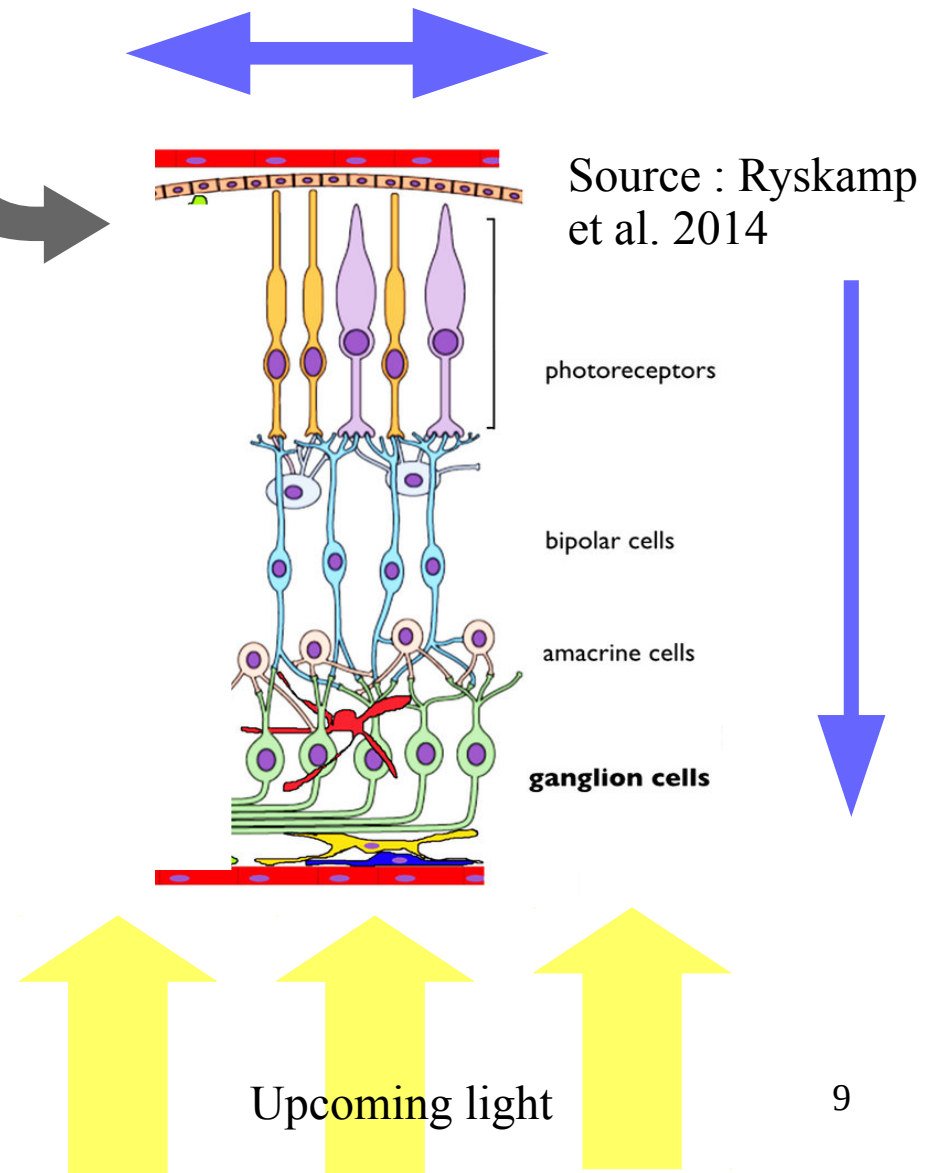
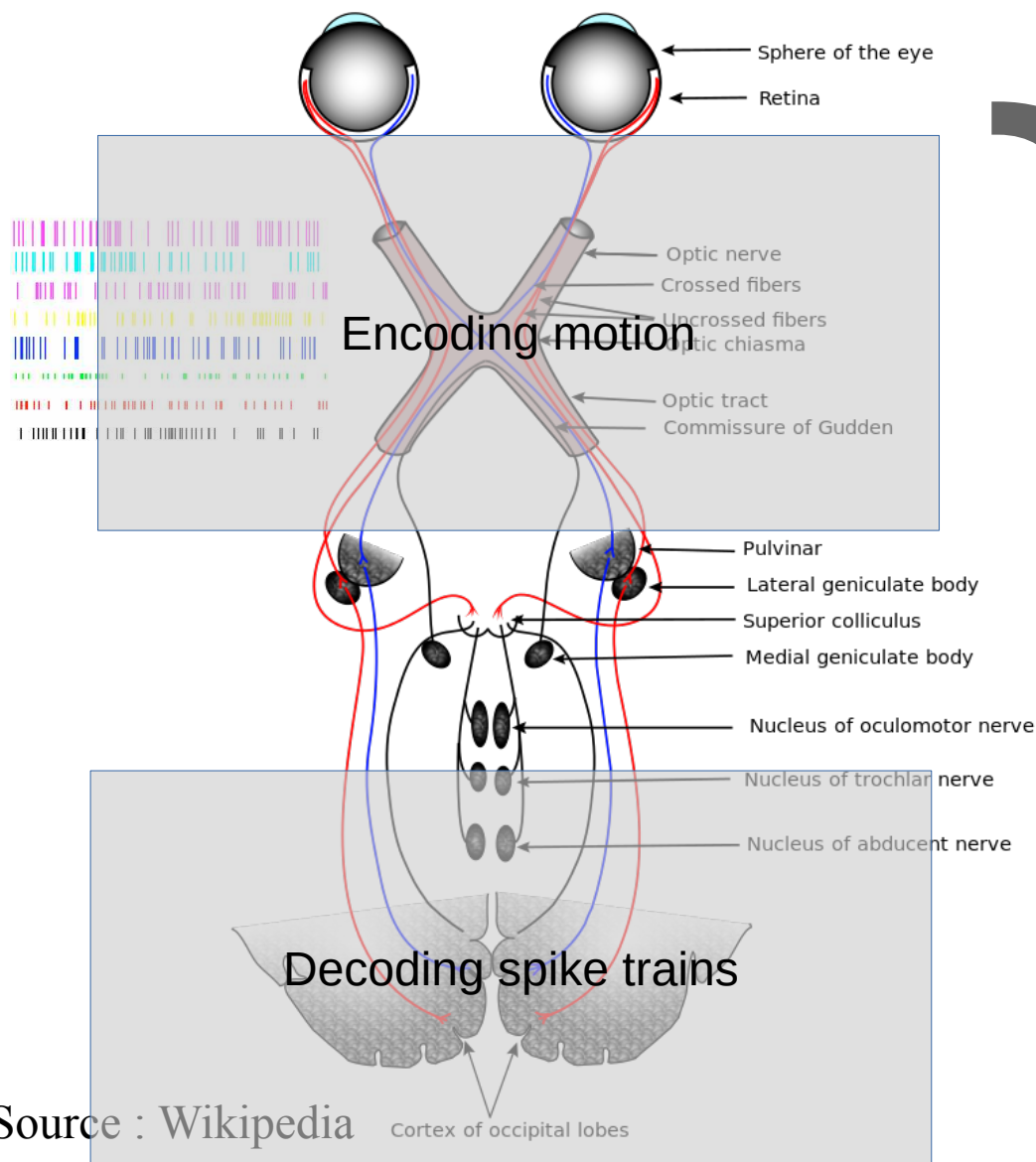
Source : Ryskamp et al. 2014

Upcoming light

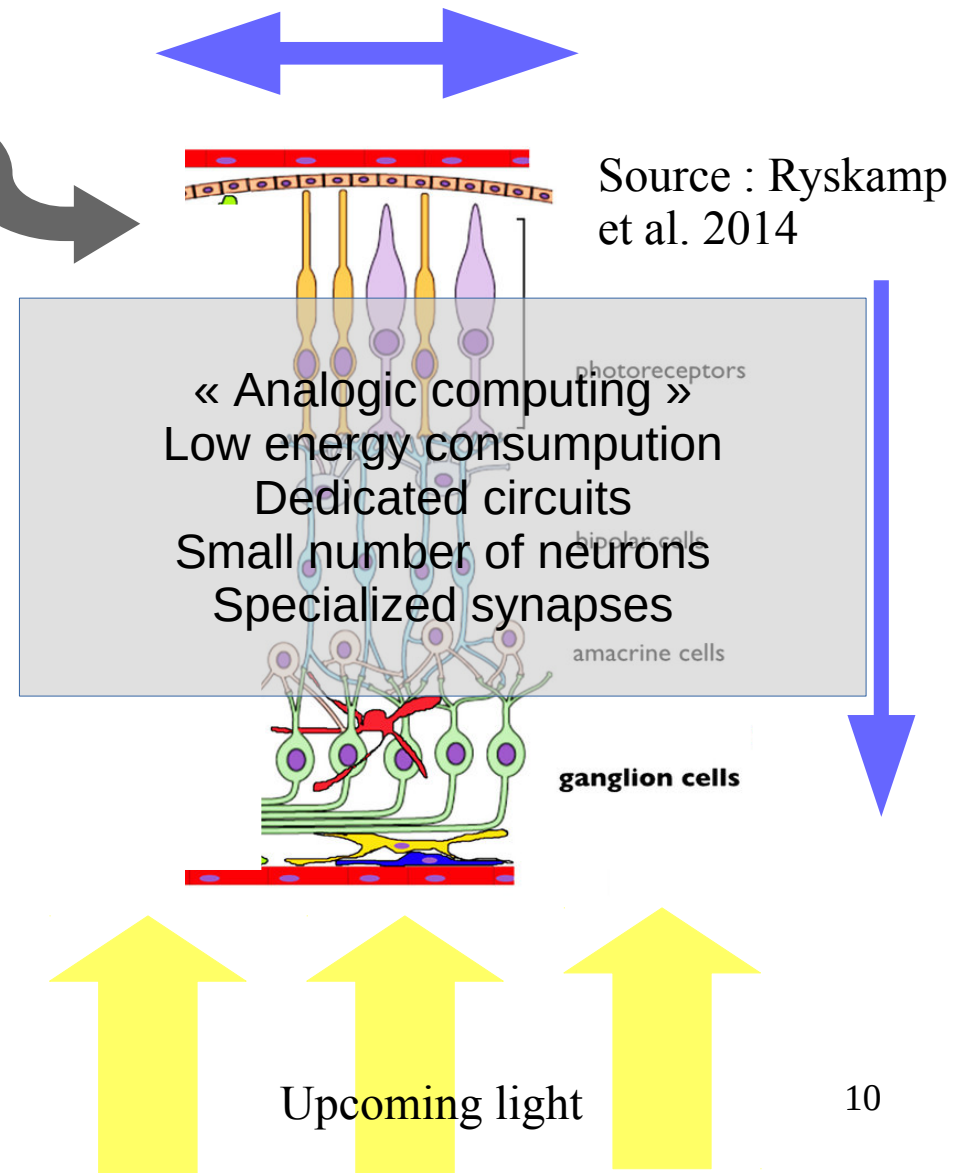
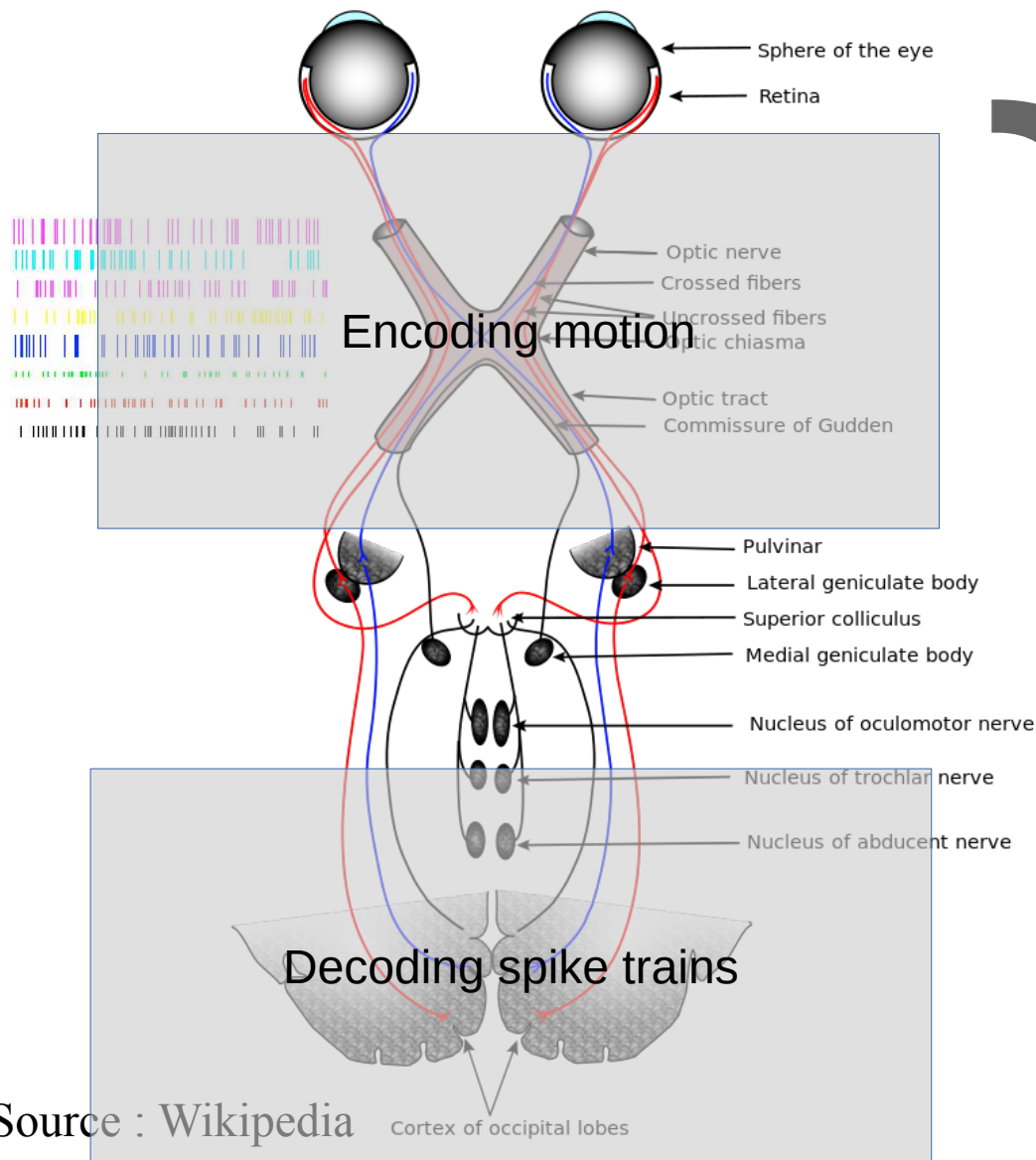
The visual flow



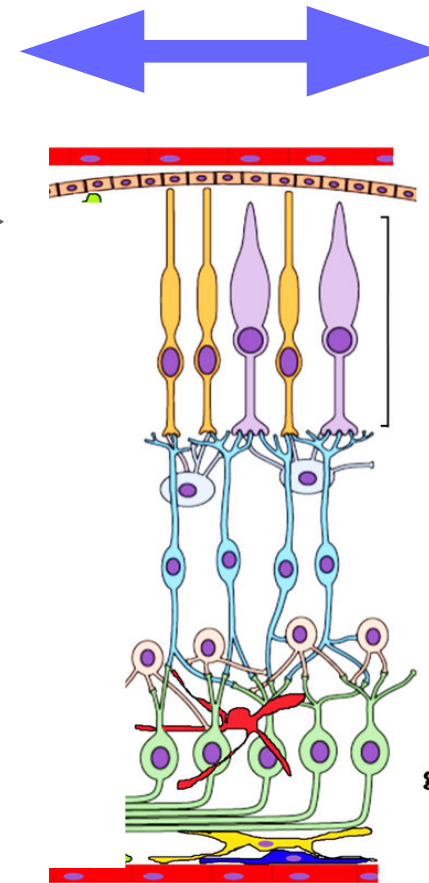
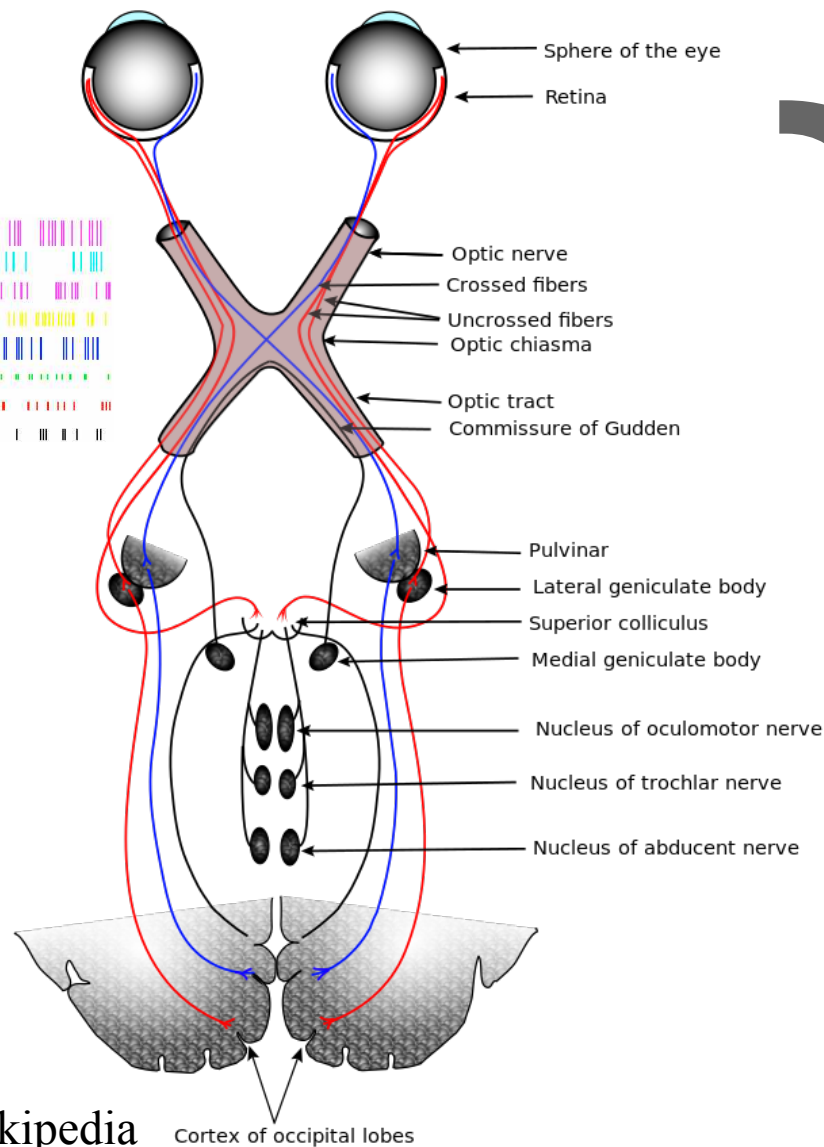
The visual flow



The visual flow



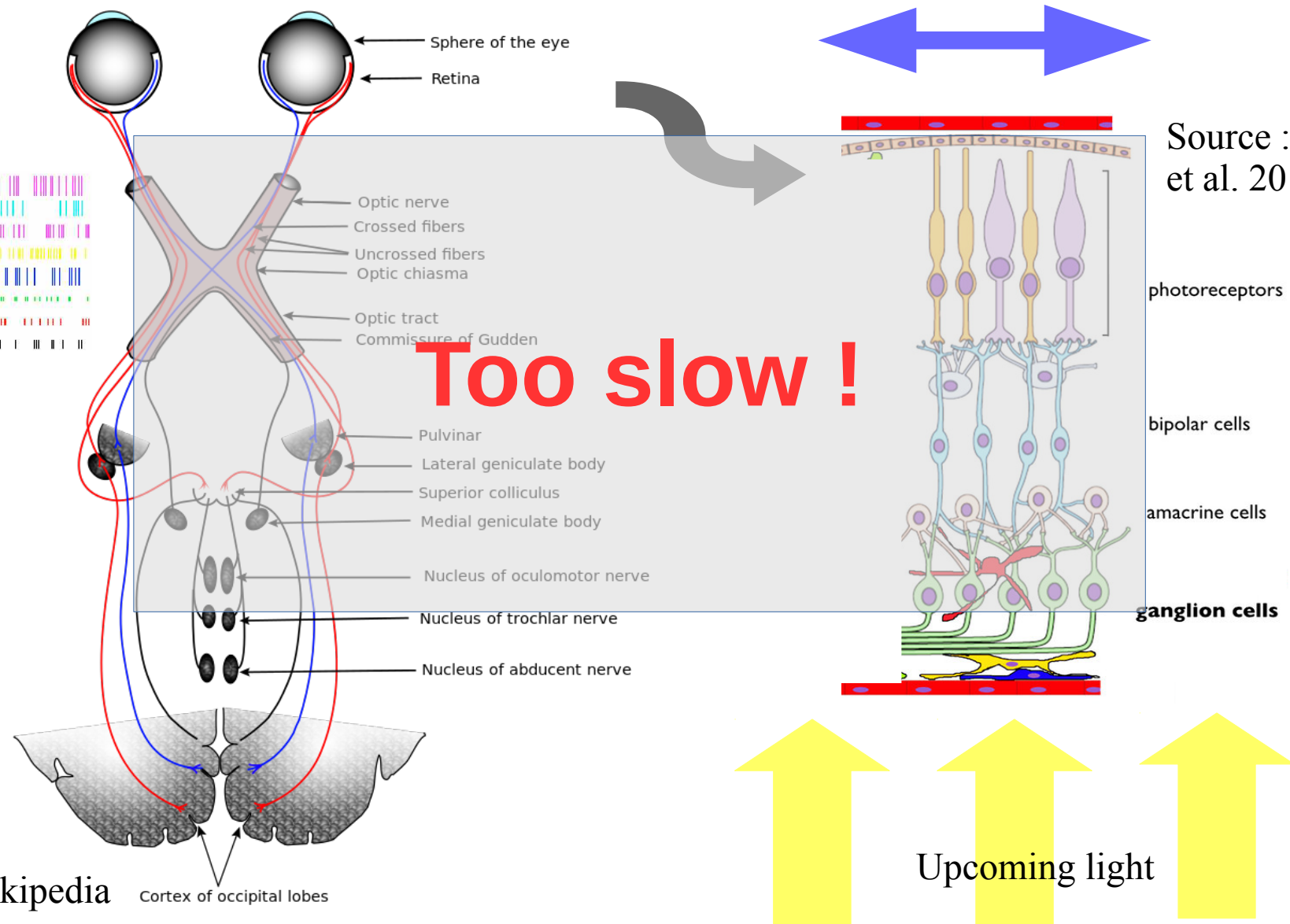
The visual flow



Source : Ryskamp
et al. 2014

Upcoming light

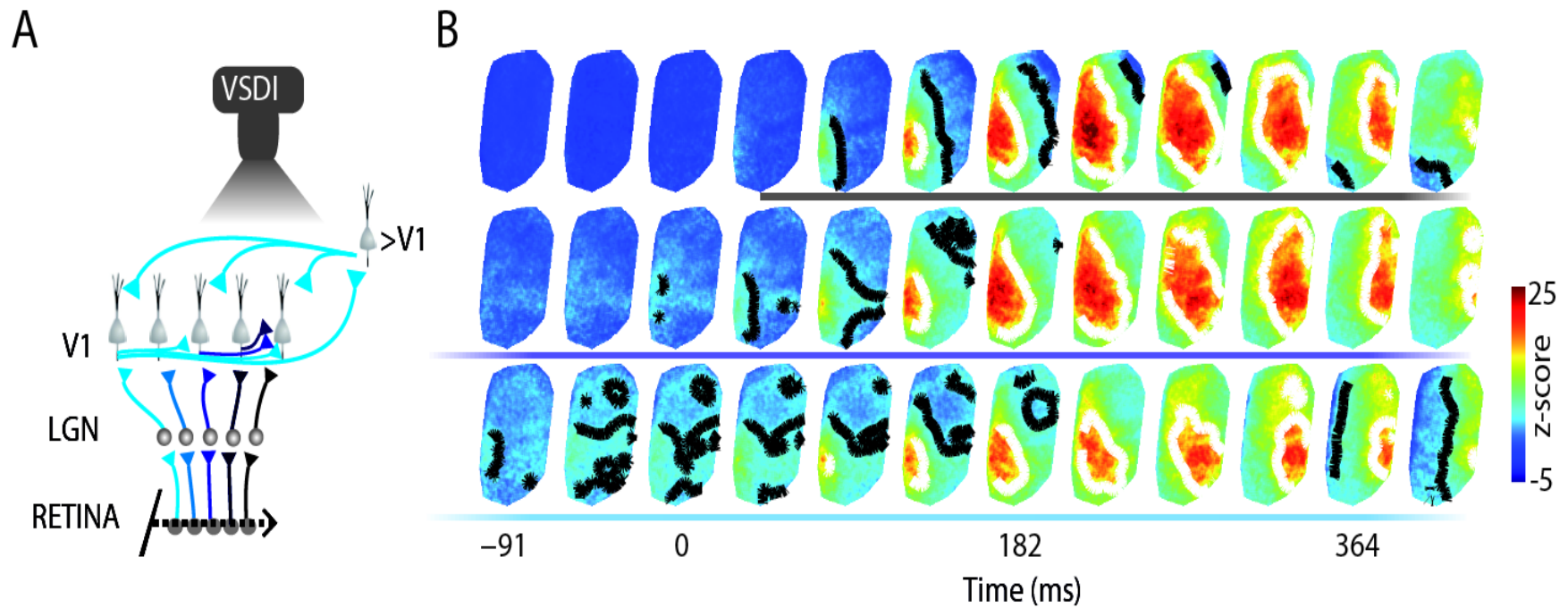
The visual flow



Source : Ryskamp
et al. 2014

Source : Wikipedia

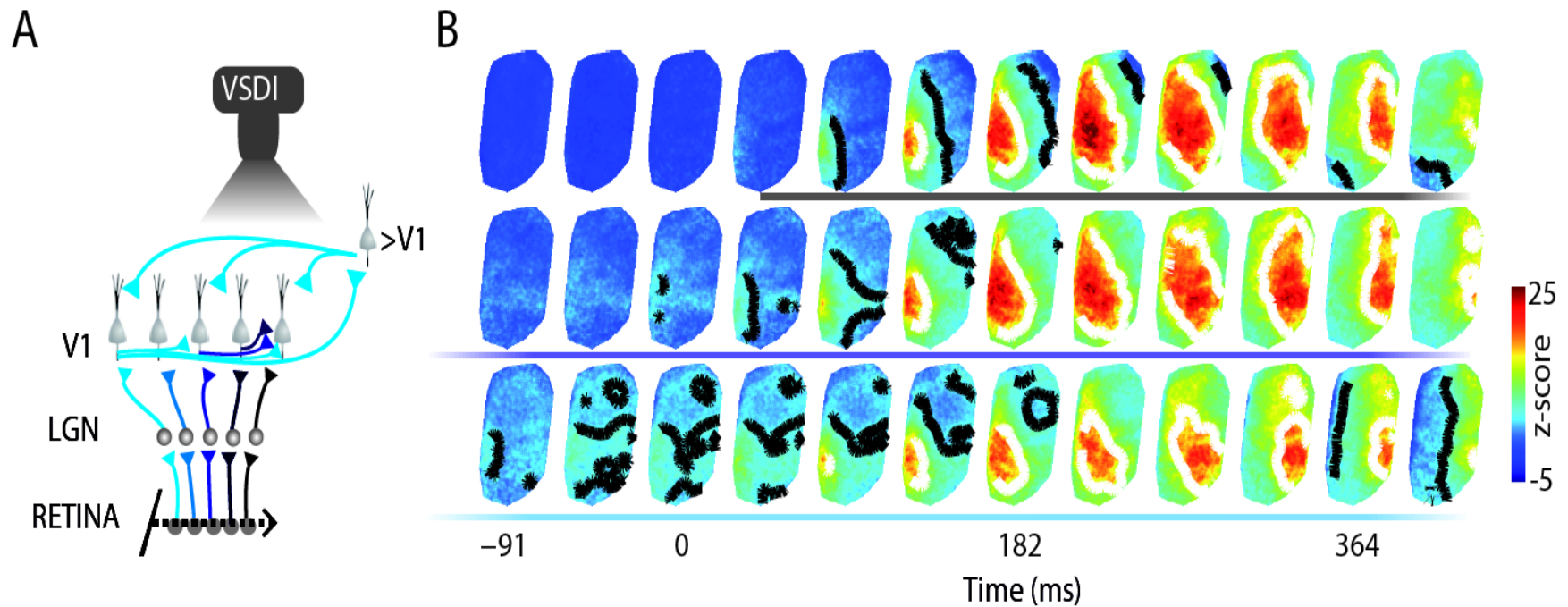
Visual Anticipation



Source : Benvenutti et al. 2015

Visual Anticipation

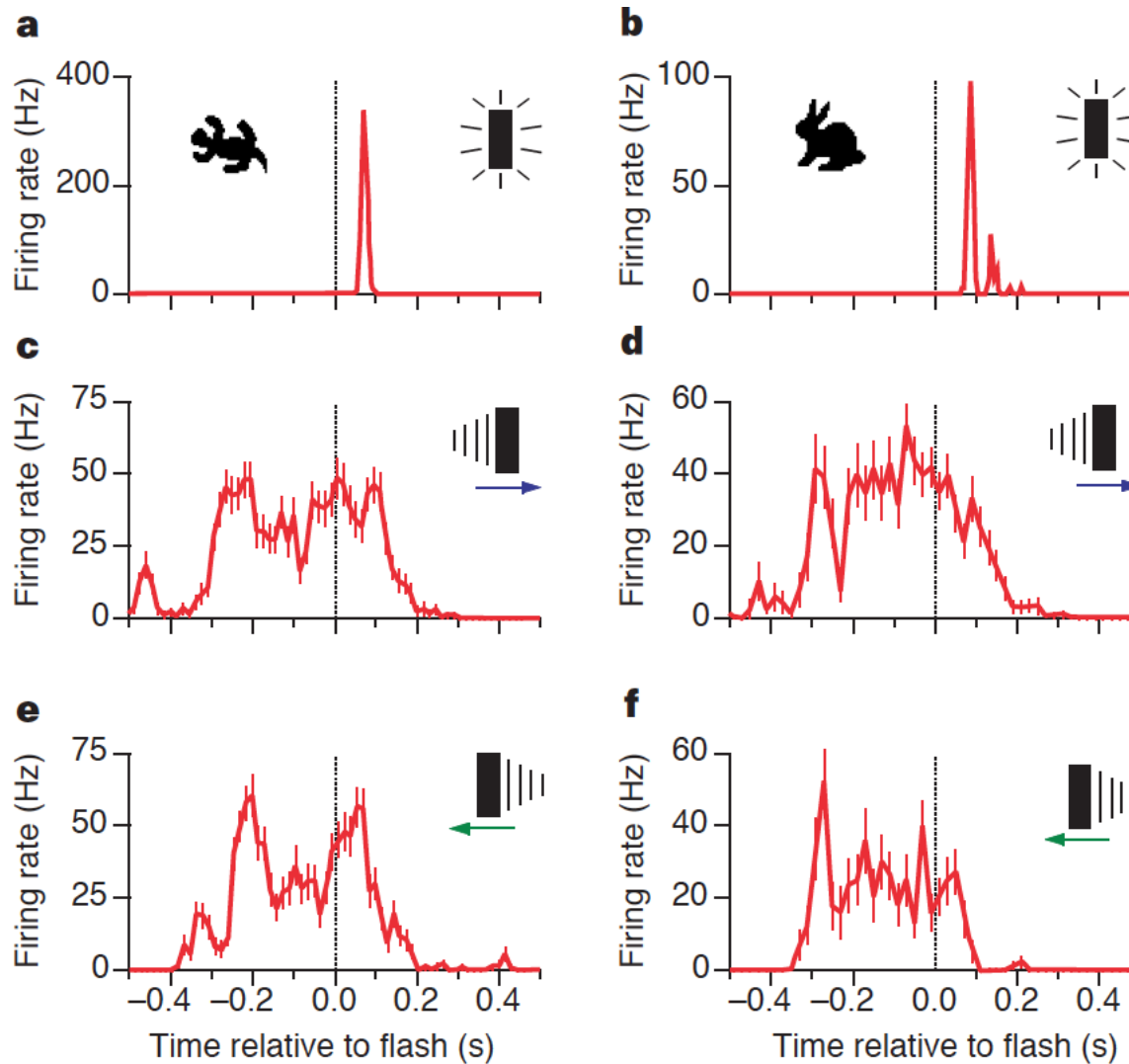
Anticipation is carried out by the primary visual cortex (V1) through an activation wave



Source : Benvenuti et al. 2015

Visual Anticipation

Anticipation also takes place in the retina



Source :
Berry et al.
1999

Visual Anticipation

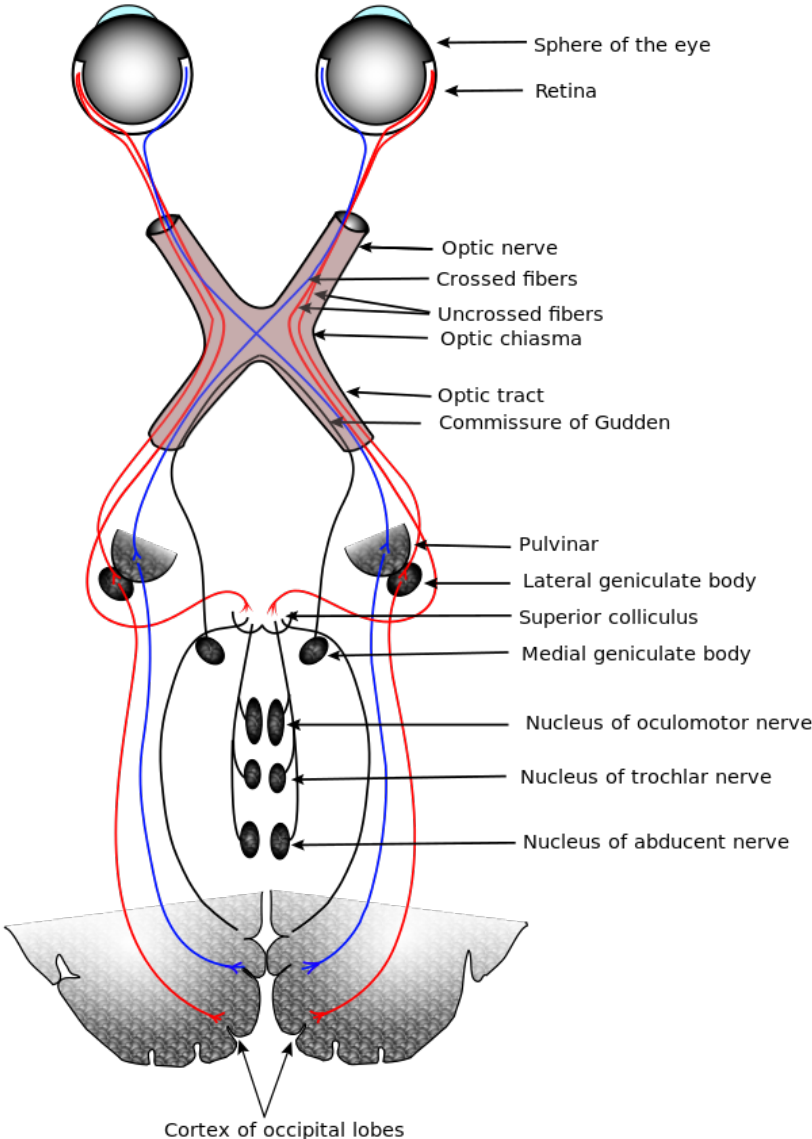


Trajectory

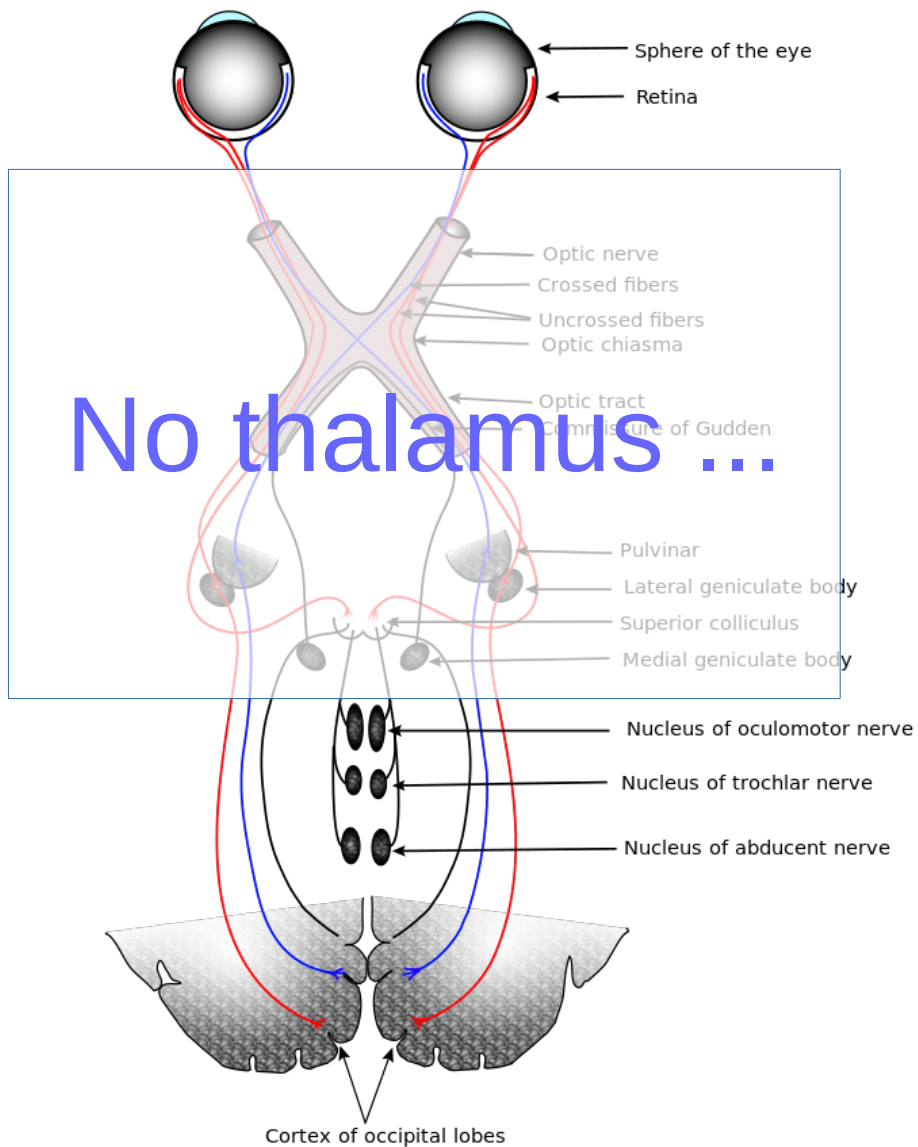
What are the respective :

- **Mechanisms underlying retinal and cortical anticipation?**
- **Role of each part ?**

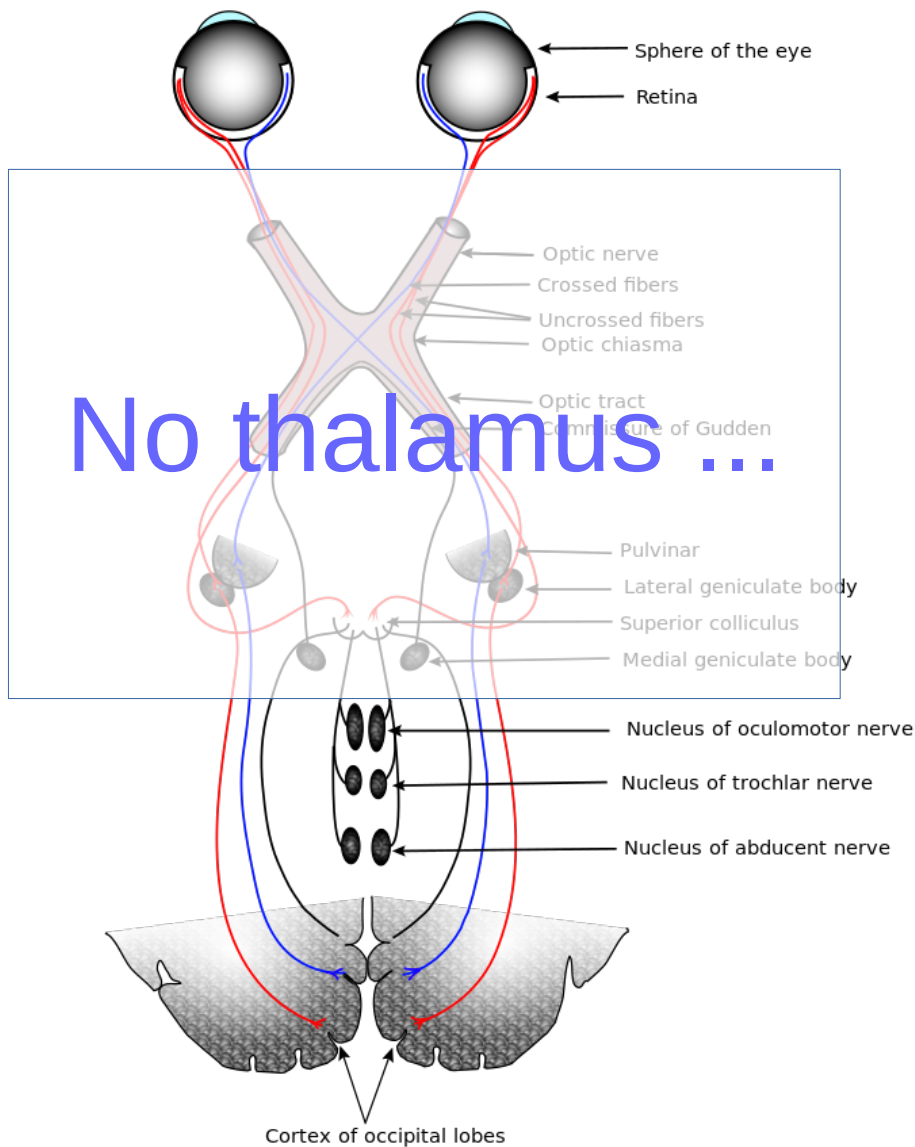
Visual Anticipation



Visual Anticipation

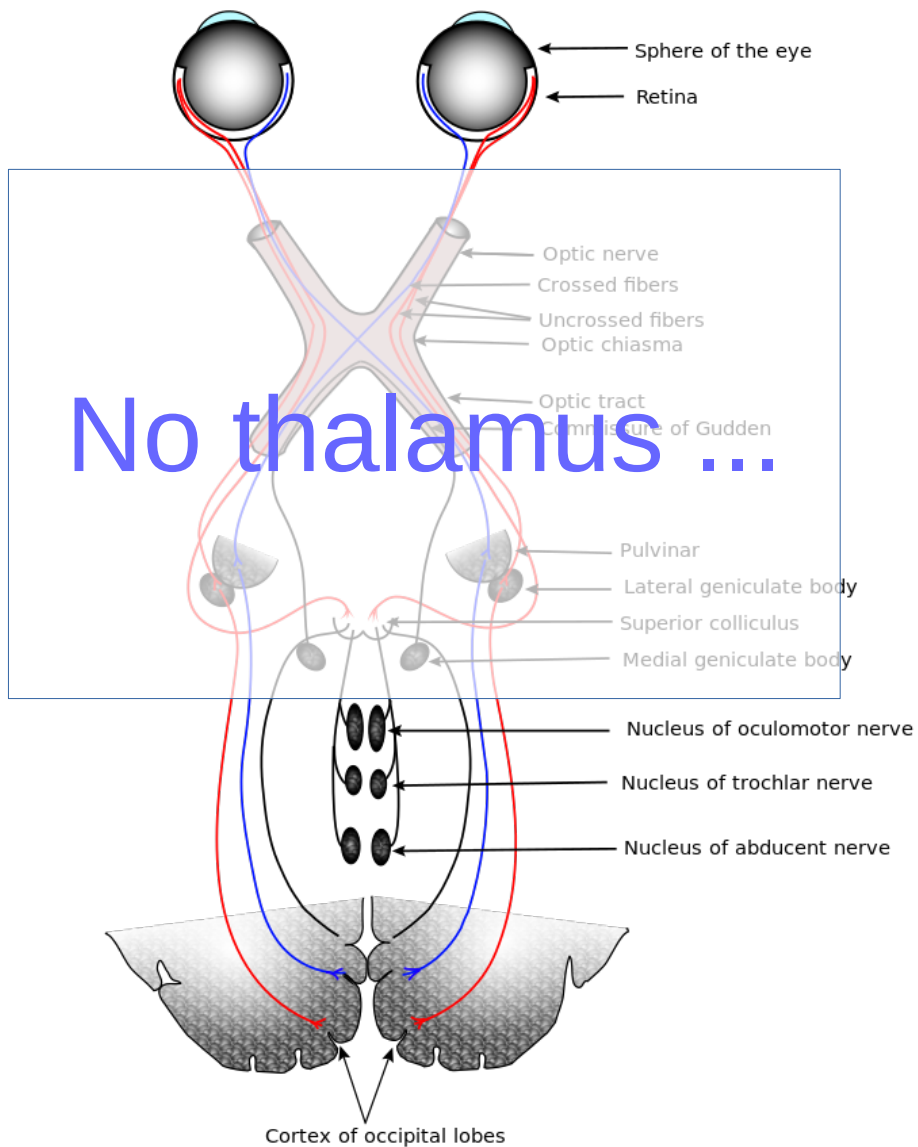


Visual Anticipation



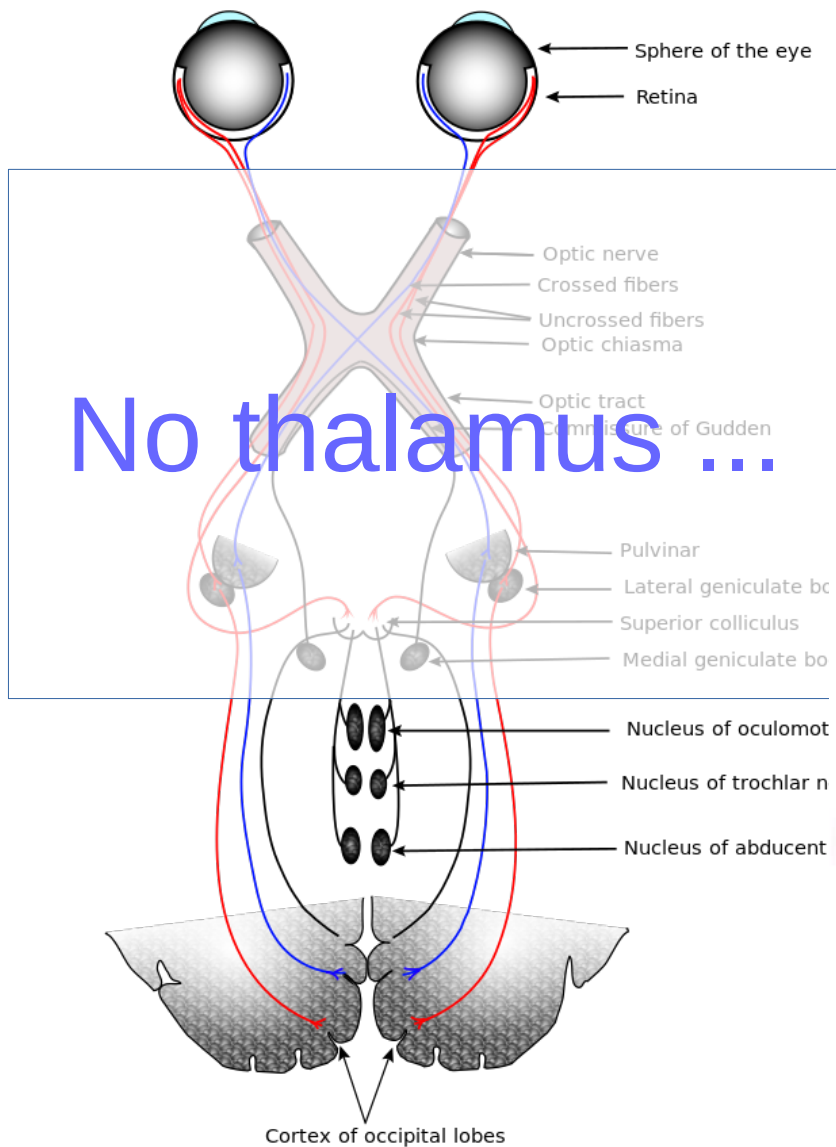
Which animal ?

Visual Anticipation



Which animal ?

Visual Anticipation



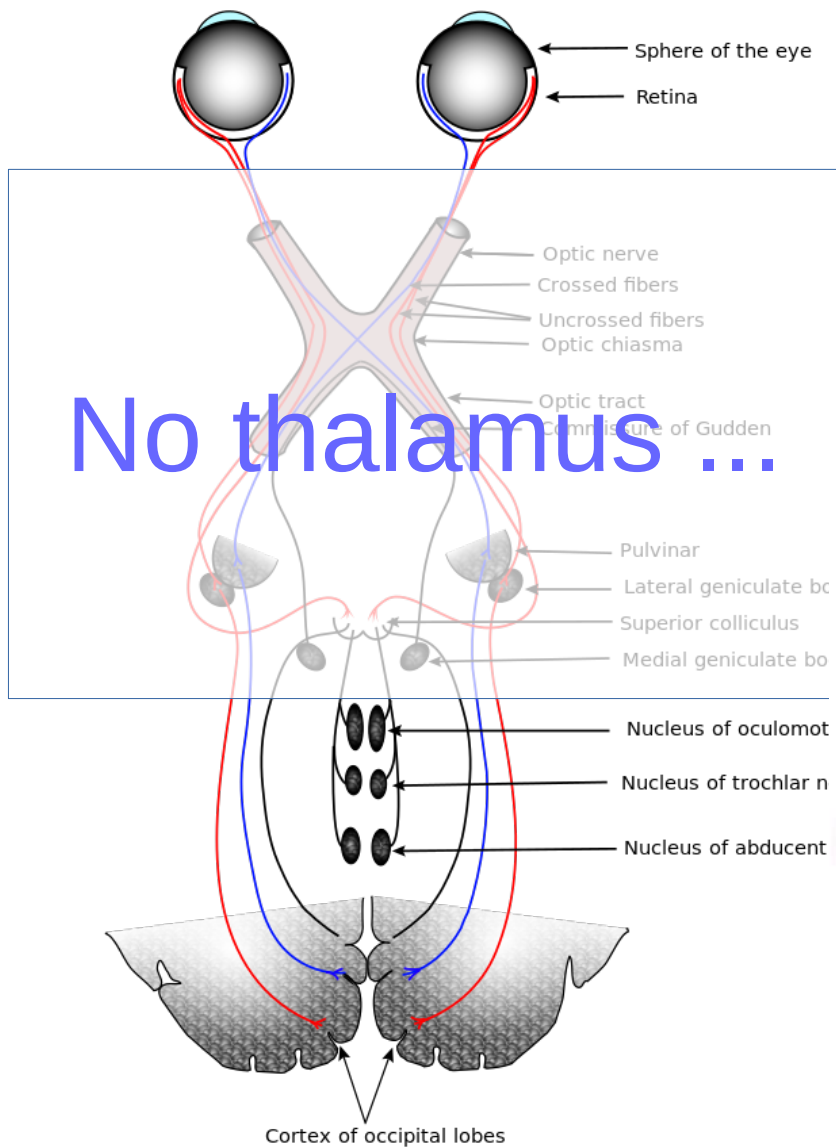
No thalamus ...



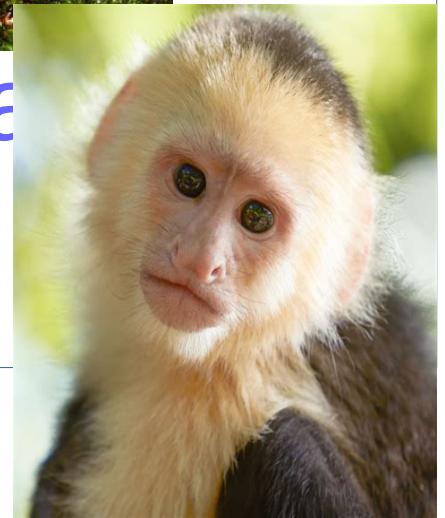
ch animal ?



Visual Anticipation

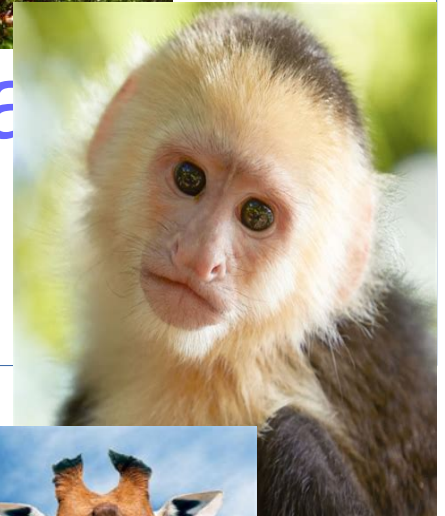
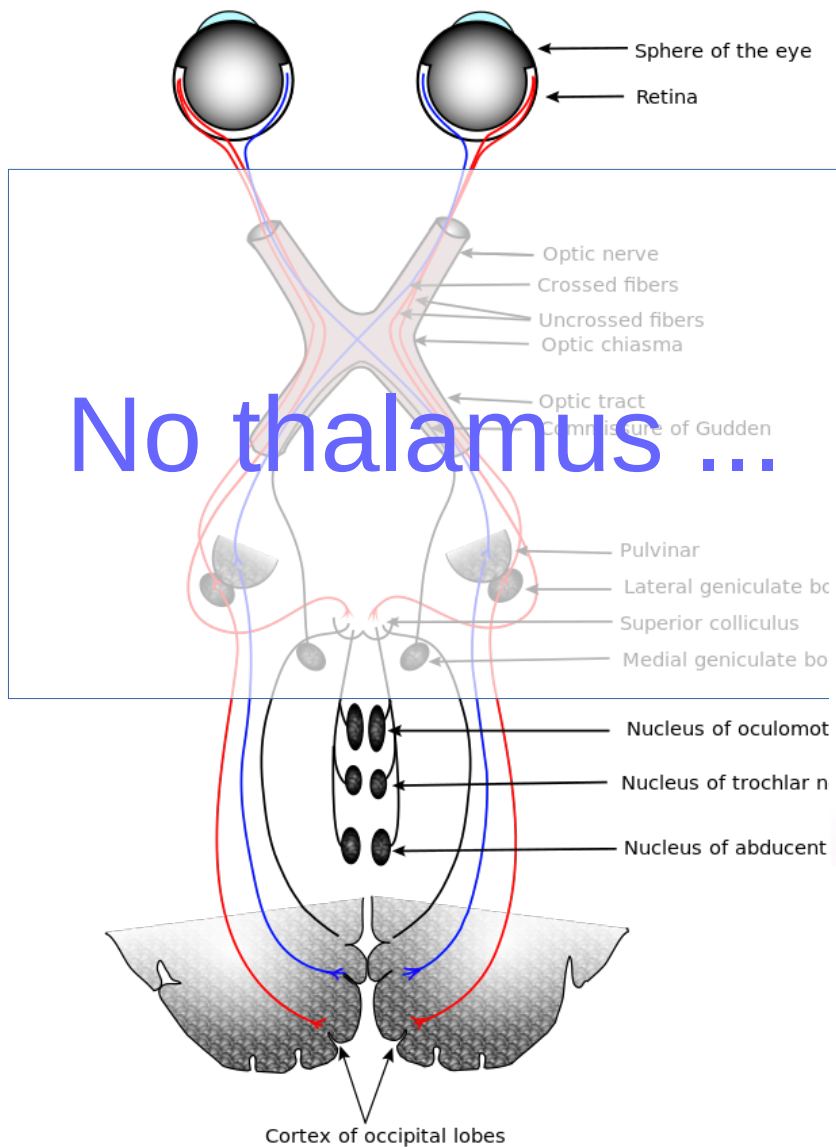


No thalamus ...

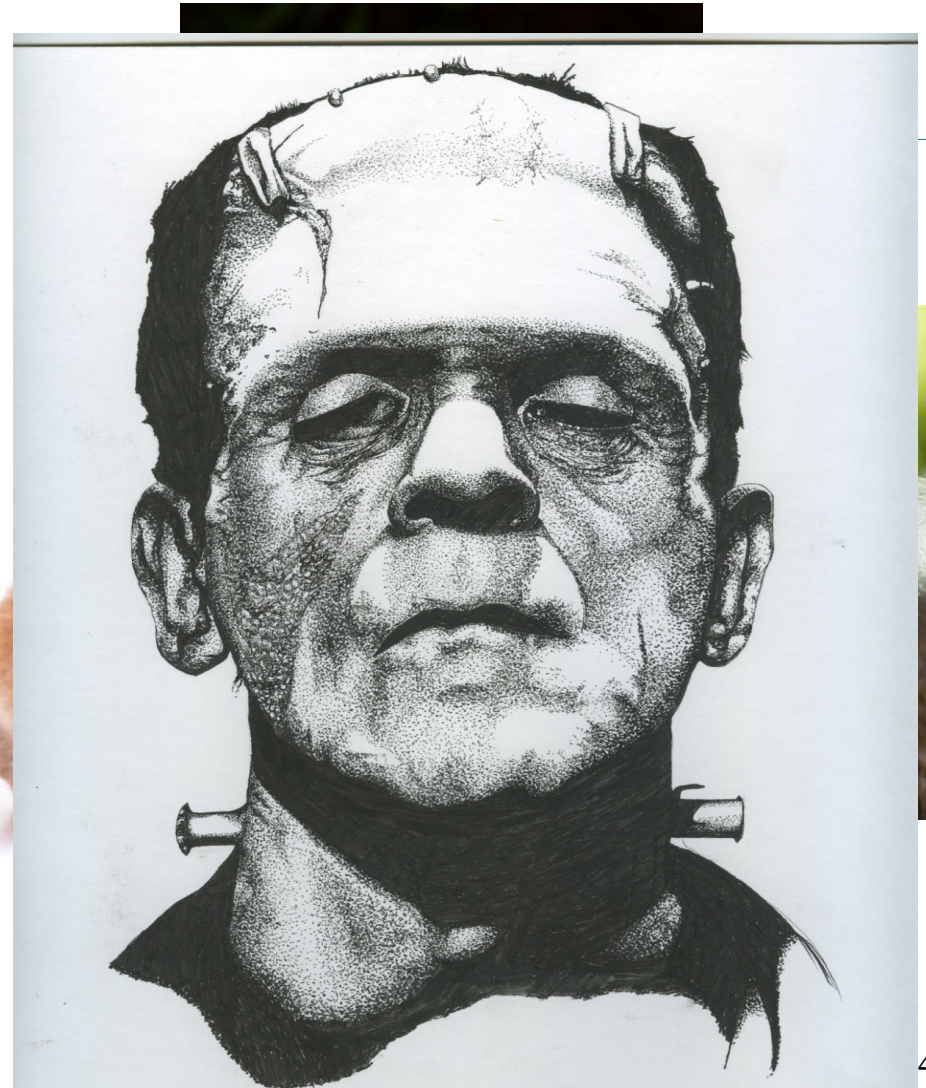
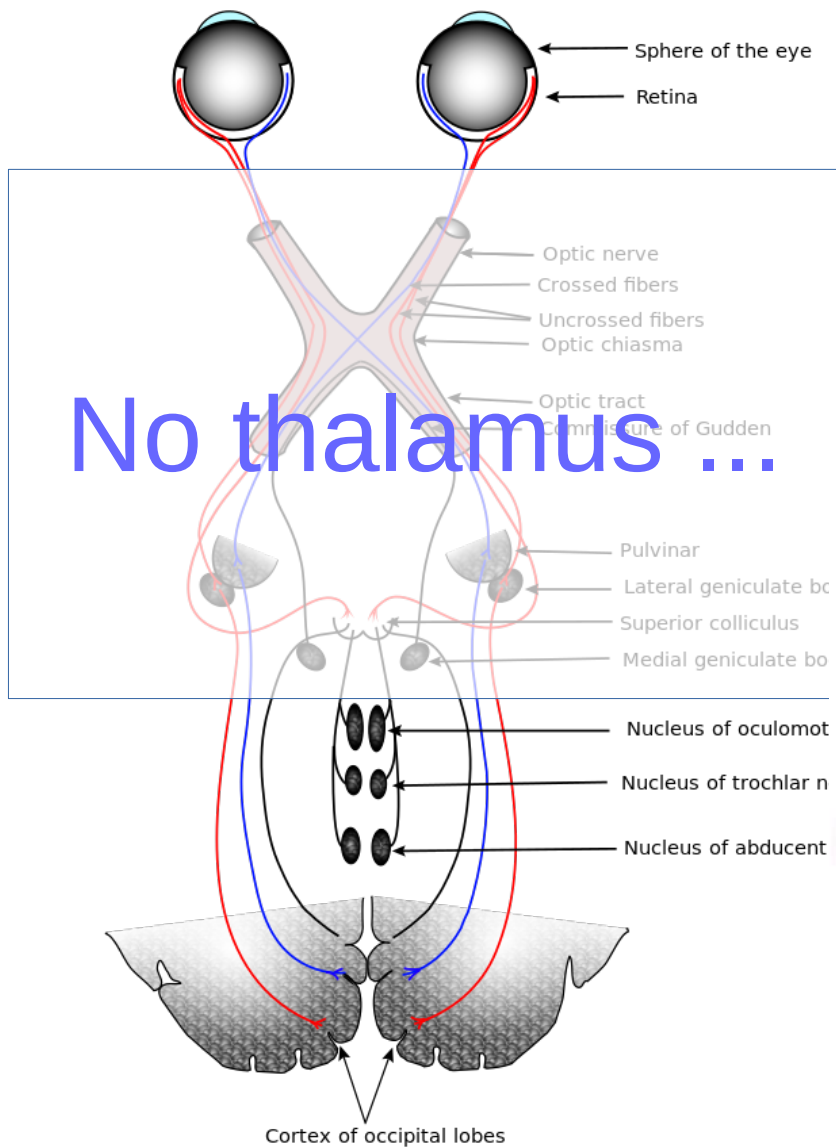


ch a

Visual Anticipation



Visual Anticipation



Visual Anticipation

Developing a retino-cortical model of anticipation so as to

understand / propose

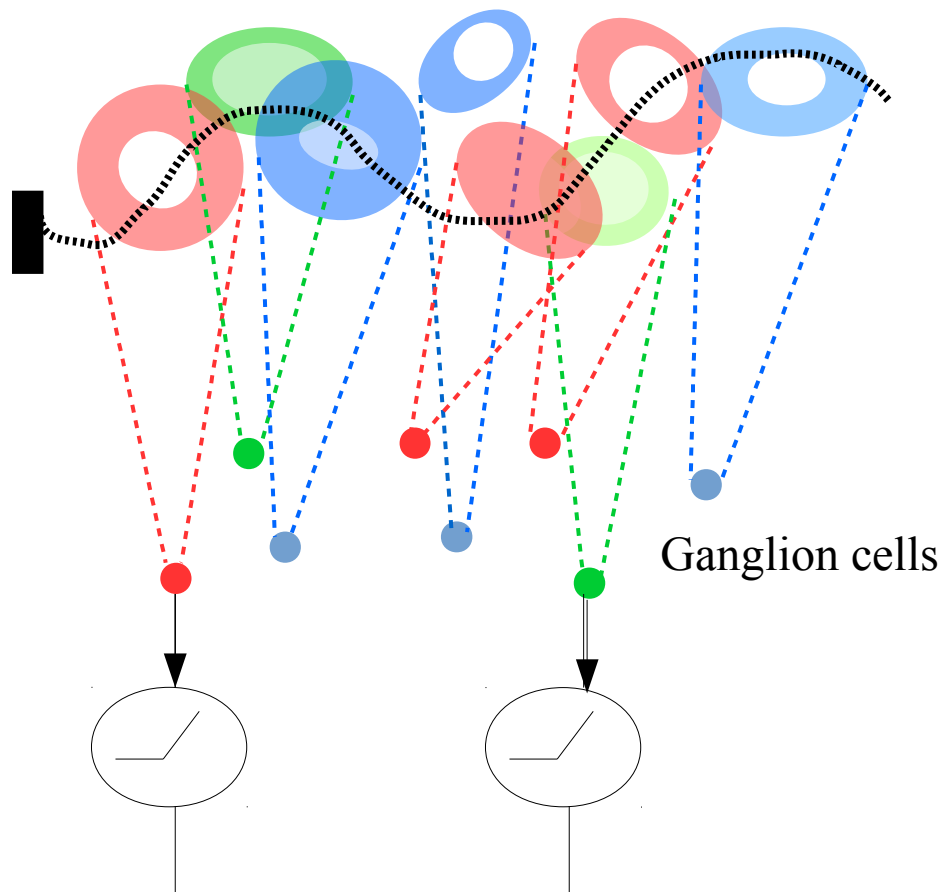
possible mechanisms for anticipation in the retina and in the cortex.

Anticipation in the retina

The Hubel-Wiesel view of vision

Nobel prize 1981

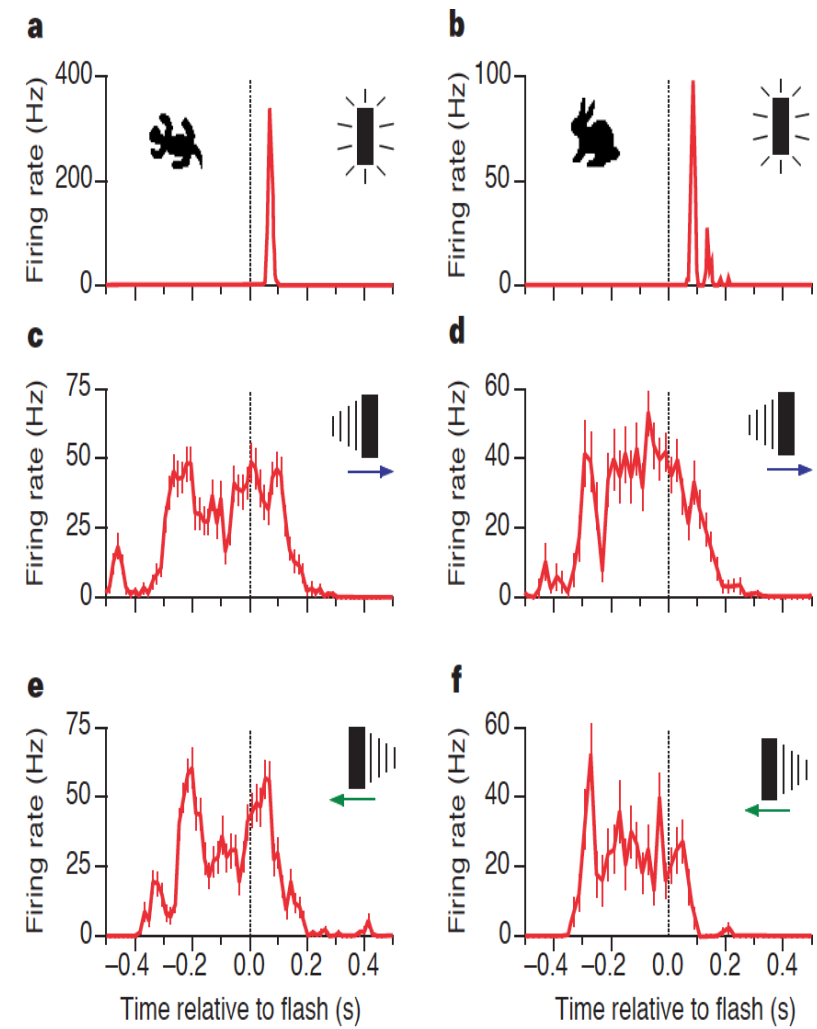
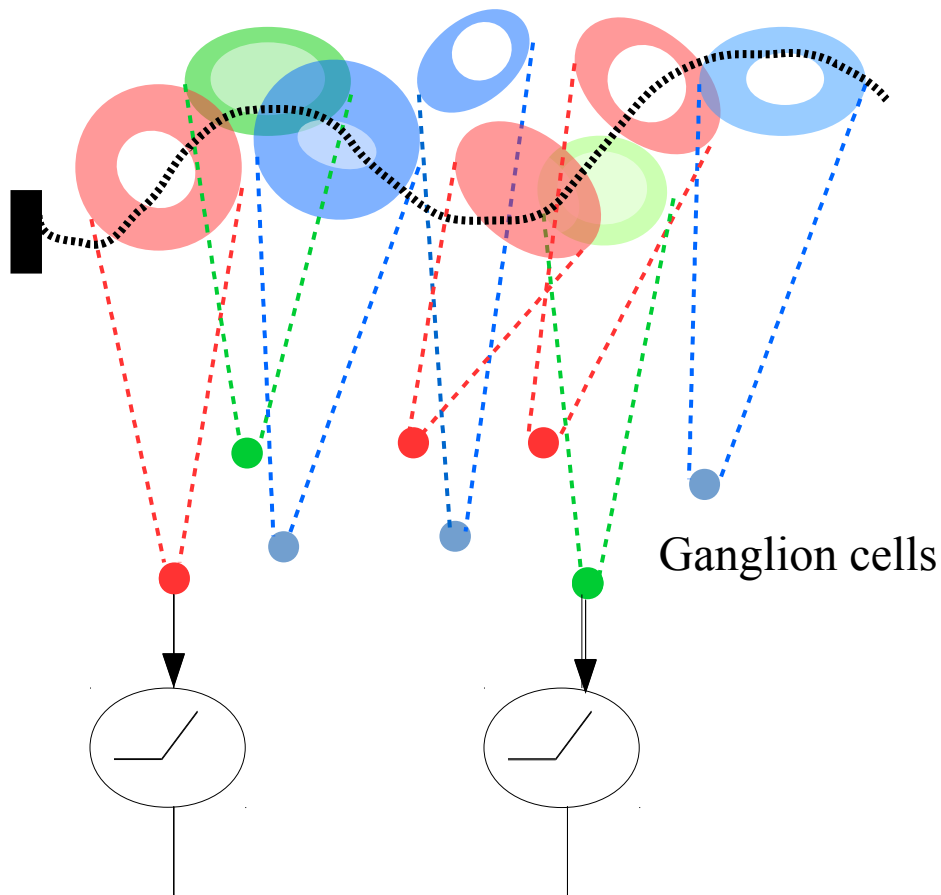
Ganglion cells response is the convolution of the stimulus with a spatio-temporal receptive field followed by a non linearity



Ganglion cells are independent encoders

The Hubel-Wiesel view of vision

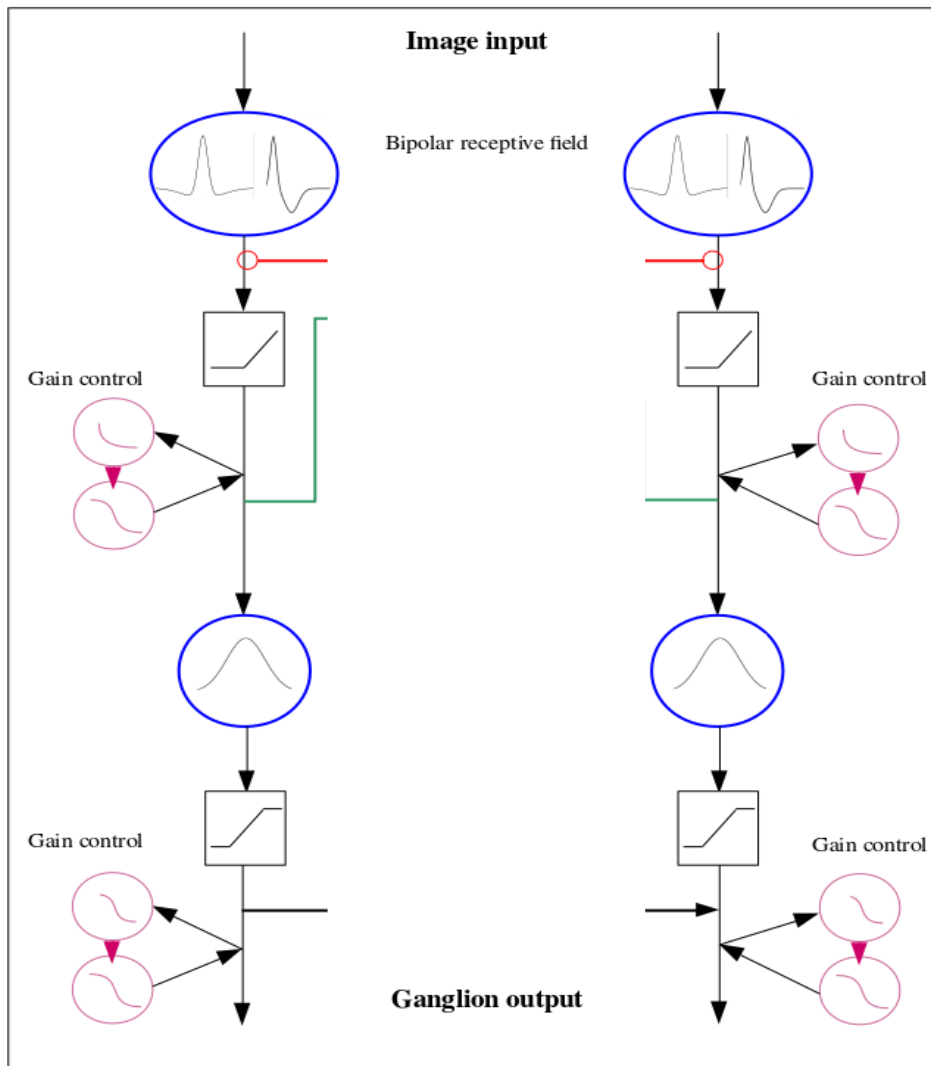
Nobel prize 1981



Source : Berry et al. 1999

Building a 2D retina model for motion anticipation

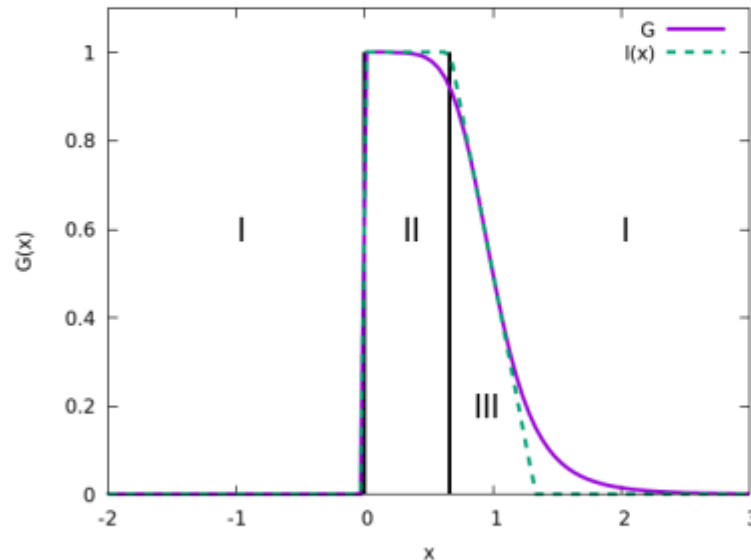
Gain control (Chen et al. 2013)



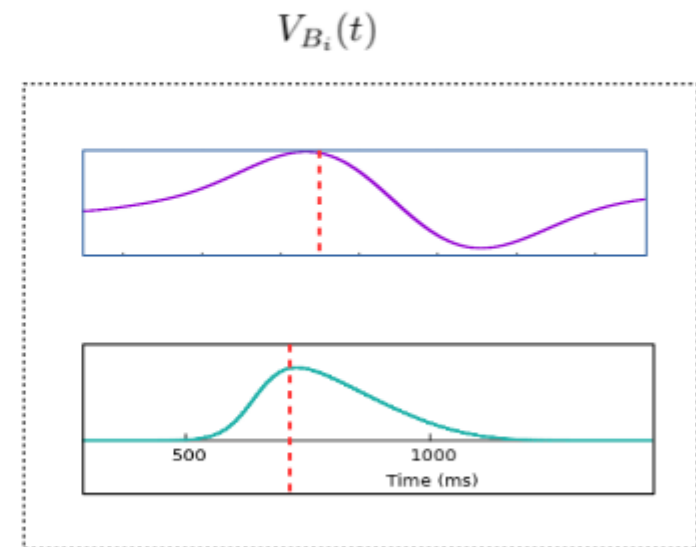
Building a 2D retina model for motion anticipation

1) Gain control

How does it work ?



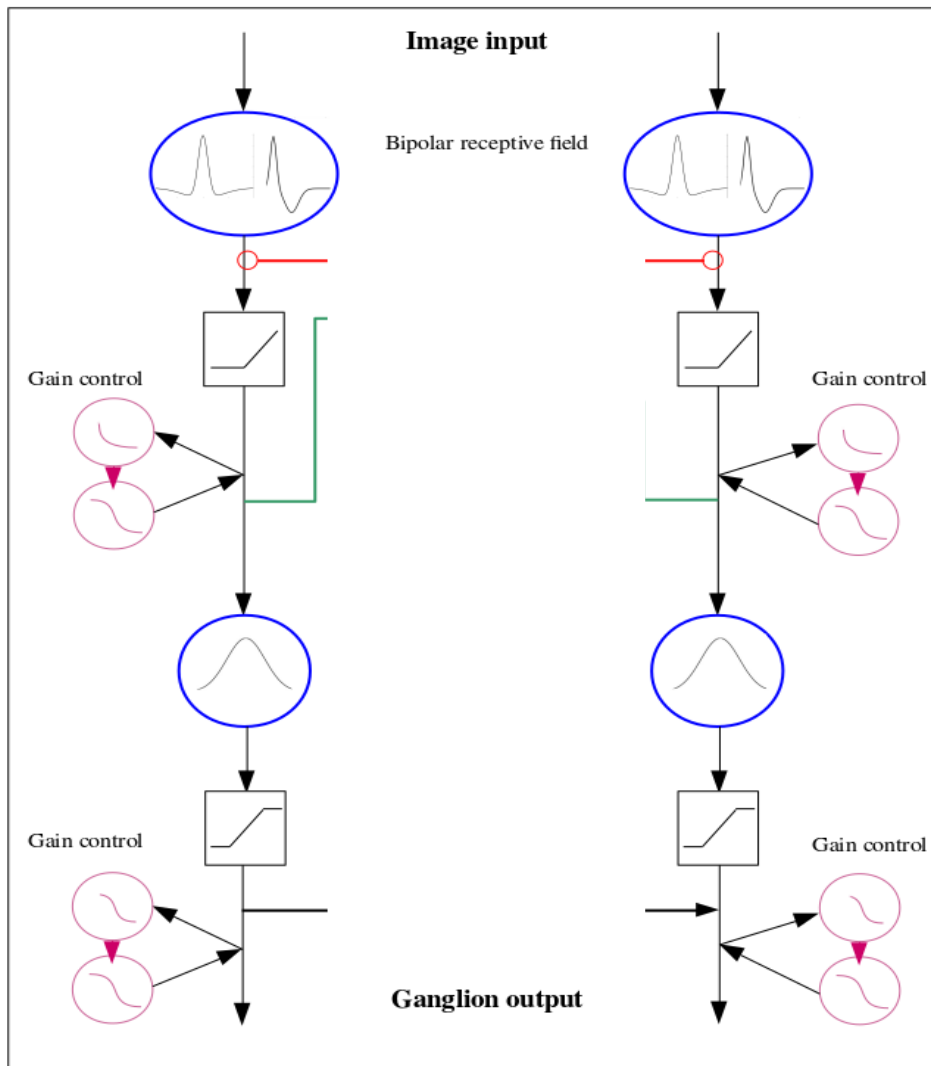
$$\mathcal{G}_B(A) = \begin{cases} 0, & \text{if } A \leq 0; \\ \frac{1}{1+A^6}, & \text{else.} \end{cases}$$



$$R_{B_i} = \mathcal{N}_B(V_{B_i}) \mathcal{G}_B(A_{B_i}).$$

Building a 2D retina model for motion anticipation

Gain control (Chen et al. 2013)



- Bipolar voltage :

$$V_{B_i}(t) = V_{i_{drive}}(t).$$

- Non-linear function :

$$\mathcal{N}_B(V_{B_i}) = \begin{cases} 0, & \text{if } V_{B_i} \leq \theta_B; \\ V_{B_i} - \theta_B, & \text{else.} \end{cases}$$

- Activation function :

$$\frac{dA_{B_i}}{dt} = -\frac{A_{B_i}}{\tau_a} + h\mathcal{N}(V_{B_i}(t)).$$

- Gain Control function :

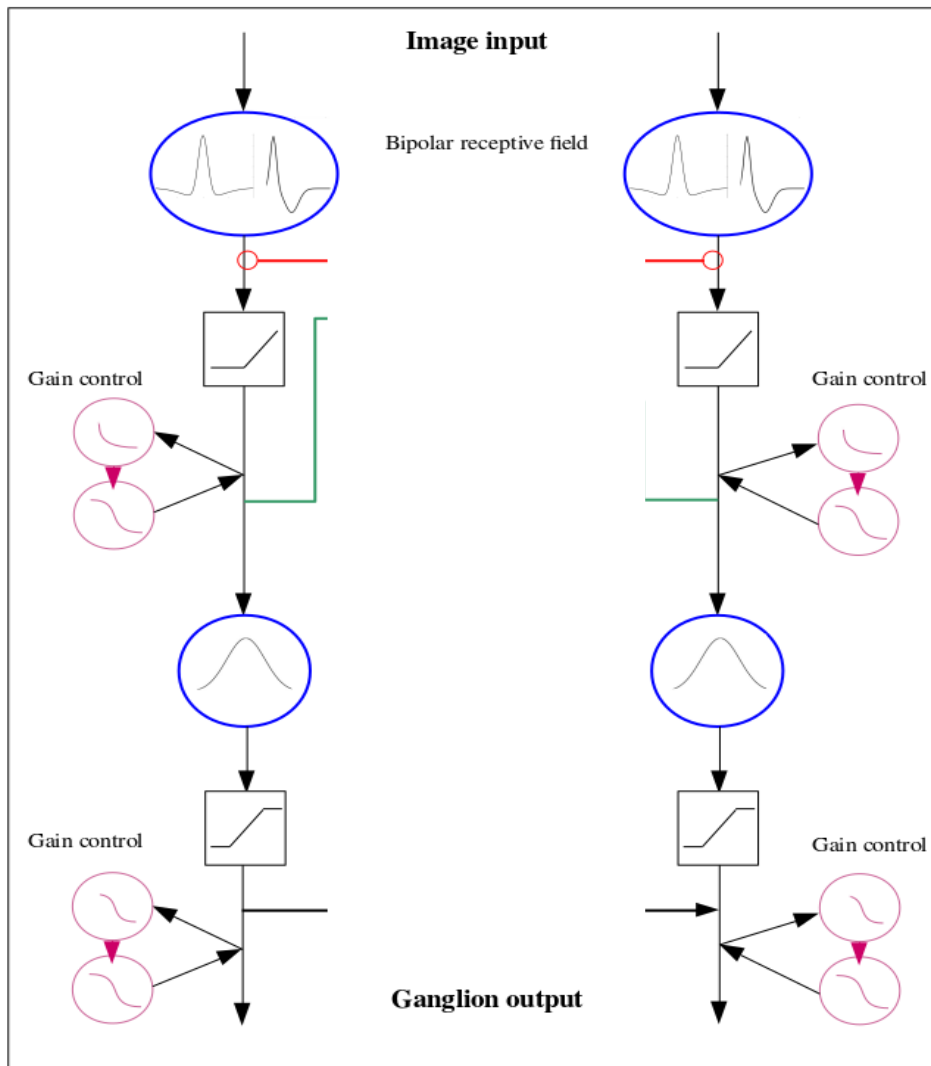
$$\mathcal{G}_B(A) = \begin{cases} 0, & \text{if } A \leq 0; \\ \frac{1}{1+A^6}, & \text{else.} \end{cases}$$

- Output :

$$R_{B_i} = \mathcal{N}_B(V_{B_i}) \mathcal{G}_B(A_{B_i}).$$

Building a 2D retina model for motion anticipation

Gain control (Chen et al. 2013)



- Ganglion voltage

$$V_{G_k} = \sum_i W_{G_k}^{B_i} R_{B_i}$$

- Non-linear function :

$$\mathcal{N}_{G_F}(V) = \begin{cases} 0, & \text{if } V \leq 0; \\ \alpha_{G_F}(V - \theta_{G_F}), & \text{if } \theta_{G_F} \leq V \leq N_{G_F}^{max}/\alpha_{G_F} + \theta_{G_F}; \\ N_{G_F}^{max}, & \text{else.} \end{cases}$$

- Activation function :

$$\frac{dA_{G_F k_F}}{dt} = -\frac{A_{G_F k_F}}{\tau_{G_F}} + h_{G_F} \mathcal{N}_{G_F}(V_{G_F k_F})$$

- Gain Control function :

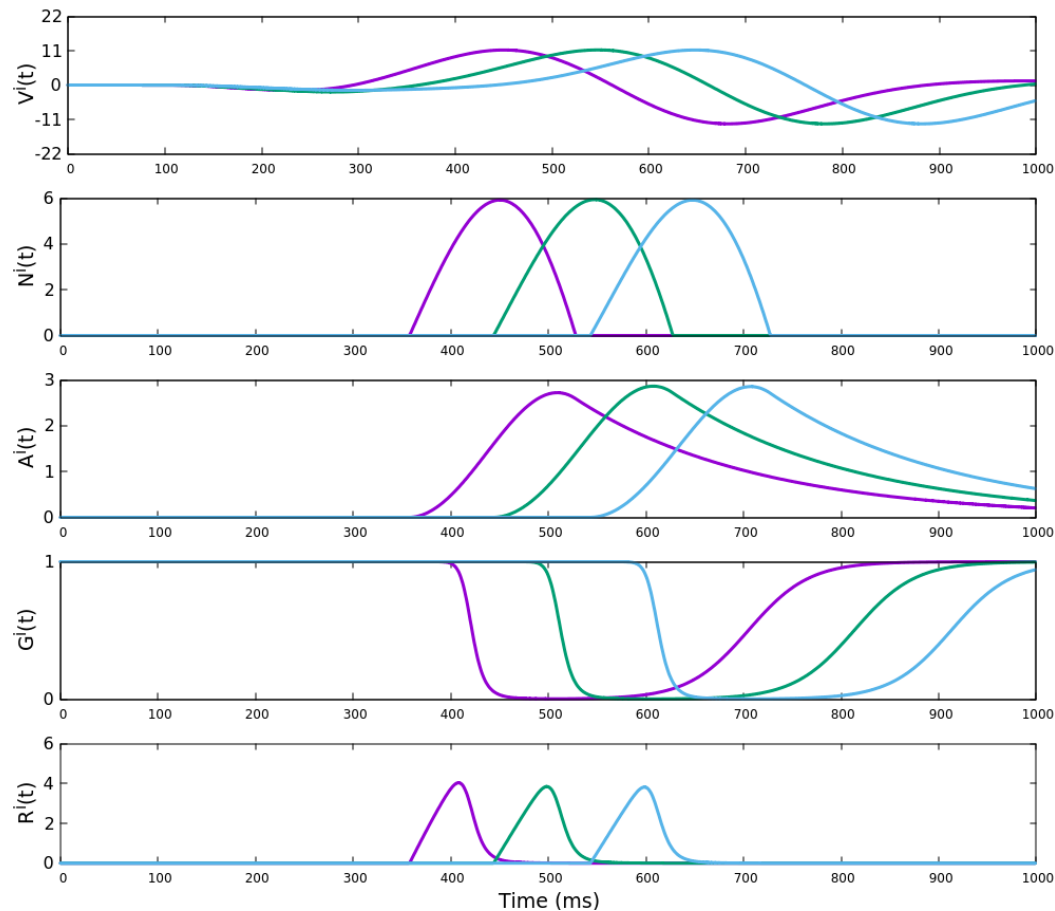
$$\mathcal{G}_{G_F}(A) = \begin{cases} 0, & \text{if } A \leq 0; \\ \frac{1}{1+A}, & \text{else.} \end{cases}$$

- Output :

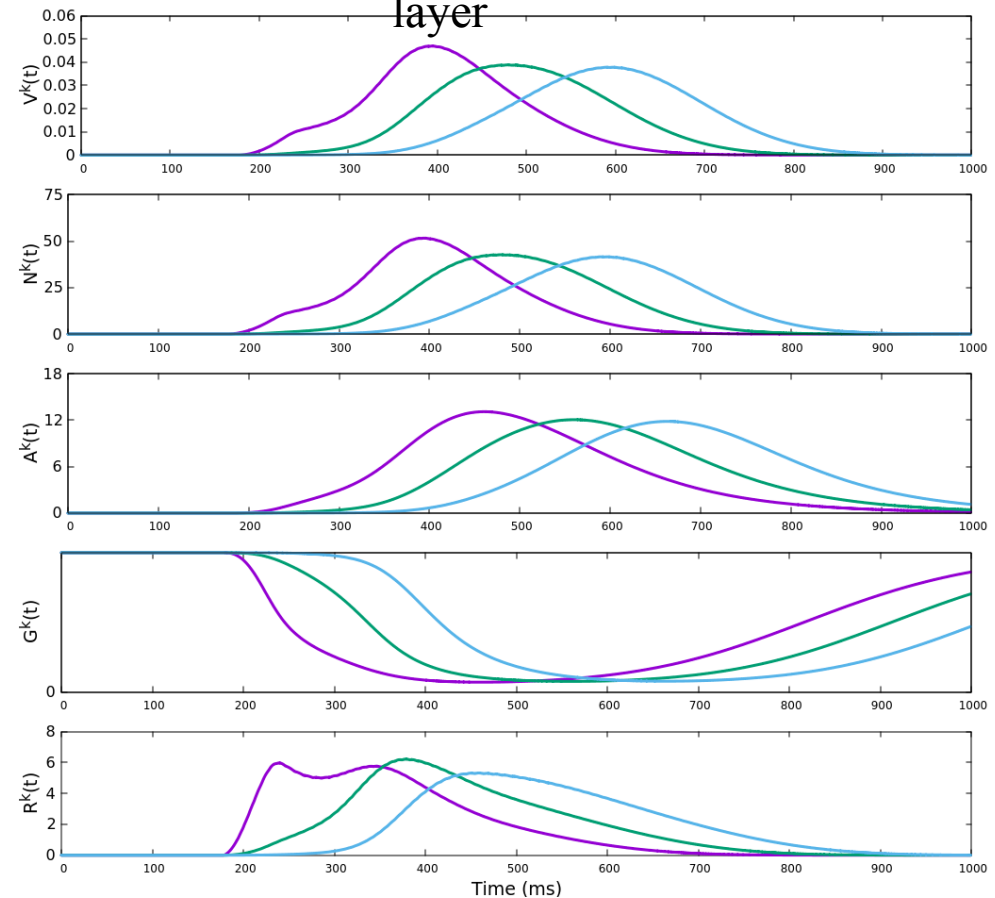
$$R_{G_F k_F}(V_{G_F k_F}, A_{G_F k_F}) = \mathcal{N}_{G_F}(V_{G_F k_F}) \mathcal{G}_{G_F}(A_{G_F k_F}).$$

1D results : smooth motion anticipation with gain control

Bipolar layer

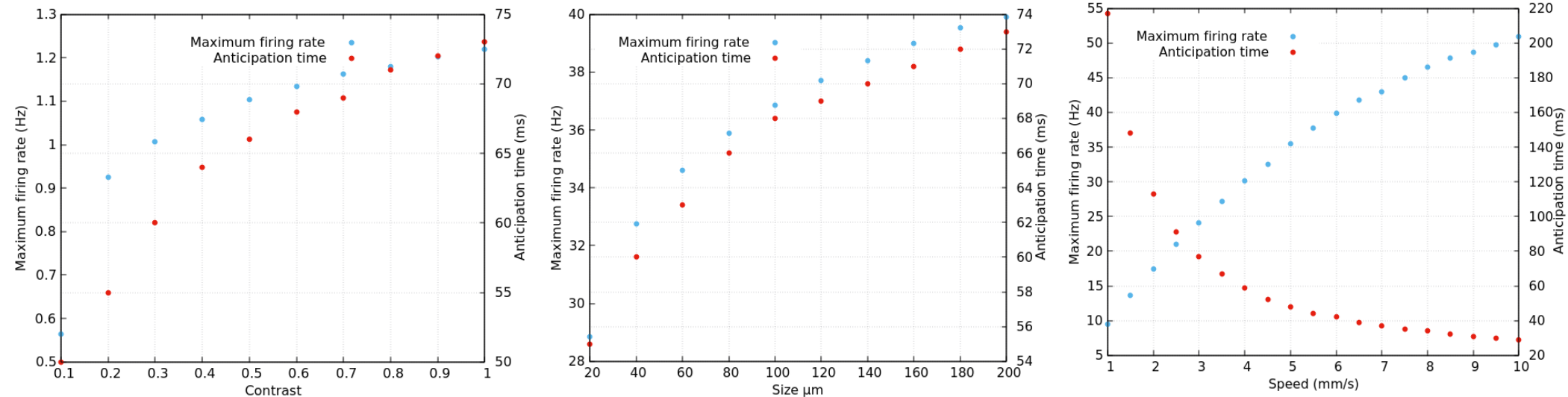


Ganglion layer

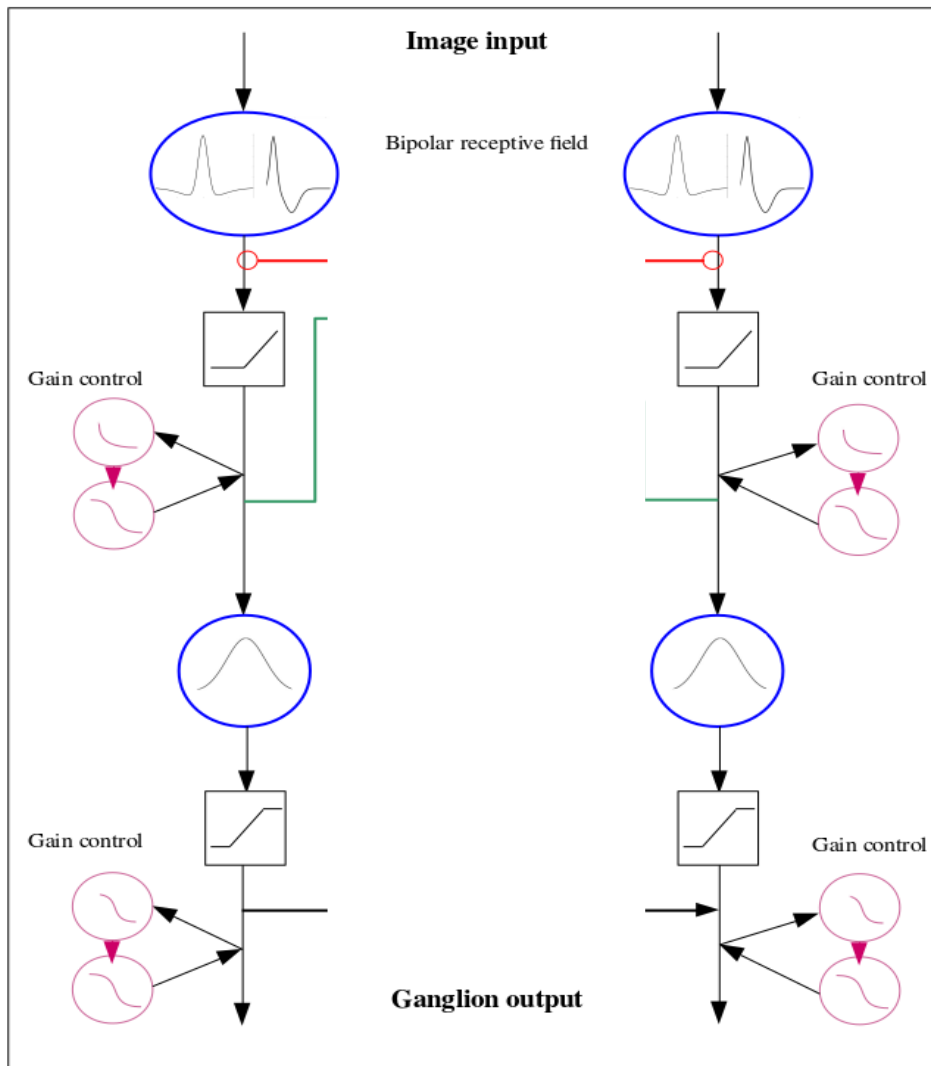


1D results : smooth motion anticipation with gain control

Anticipation variability with stimulus
parameters



Building a 2D retina model for motion anticipation



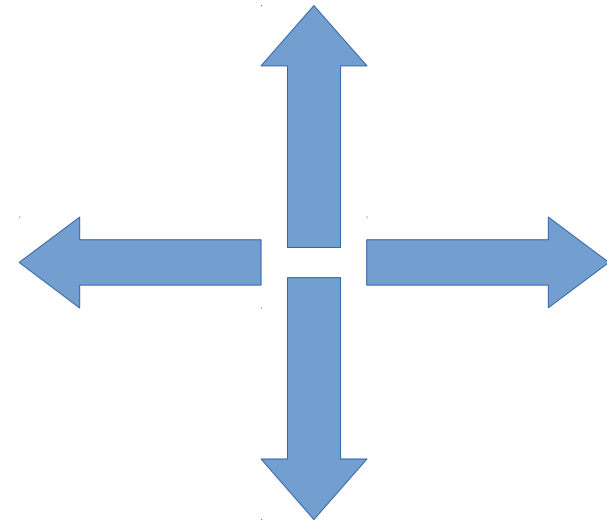
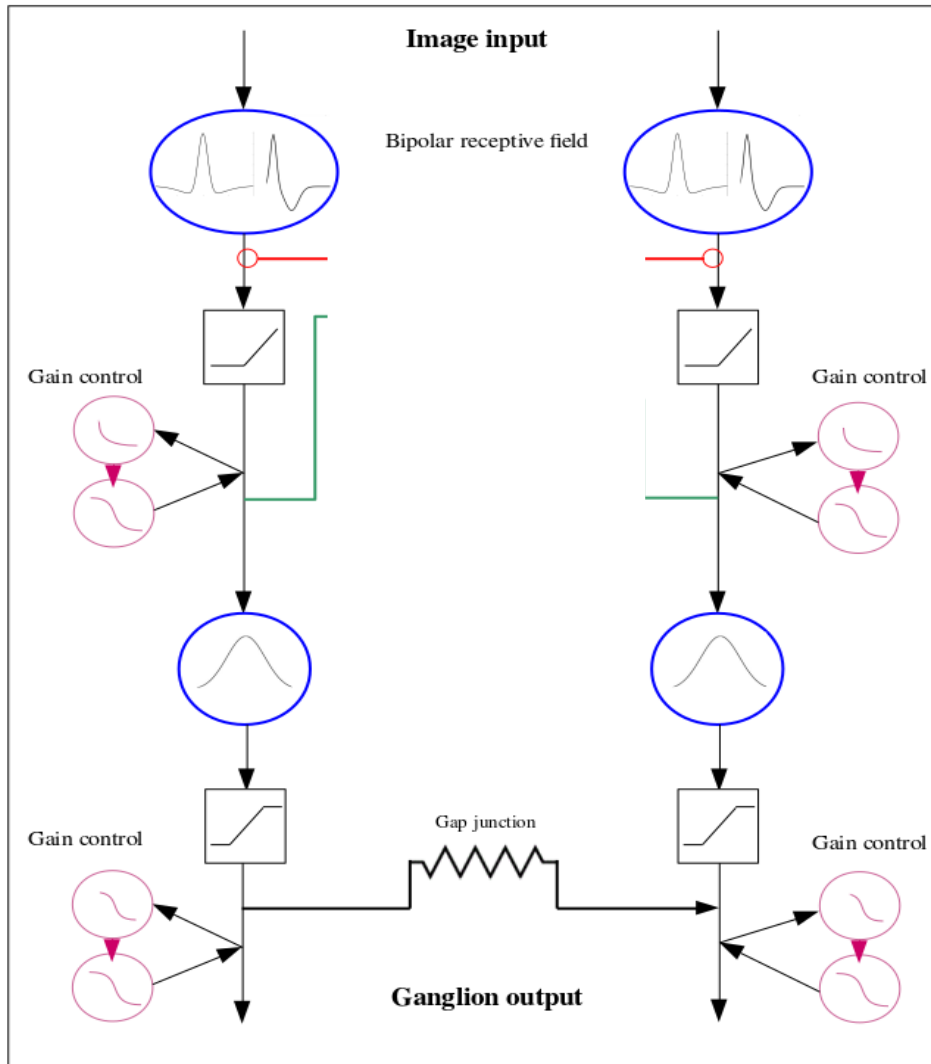
Ganglion cells are independent encoders

Gap junctions connectivity



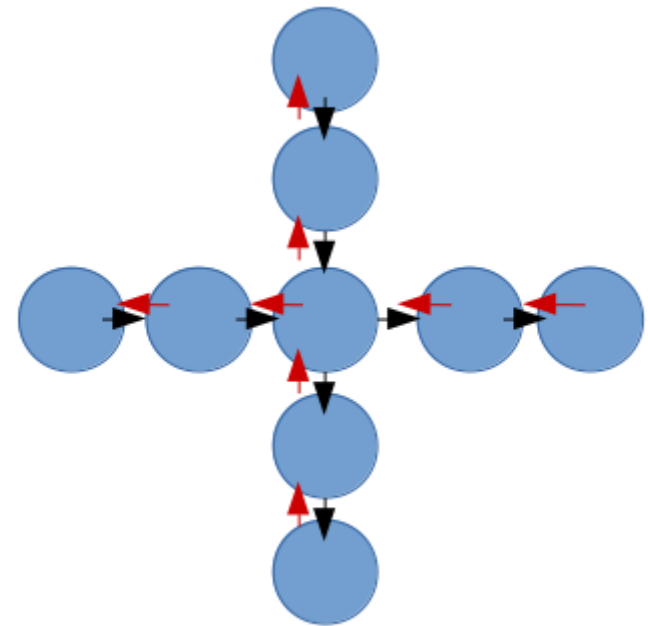
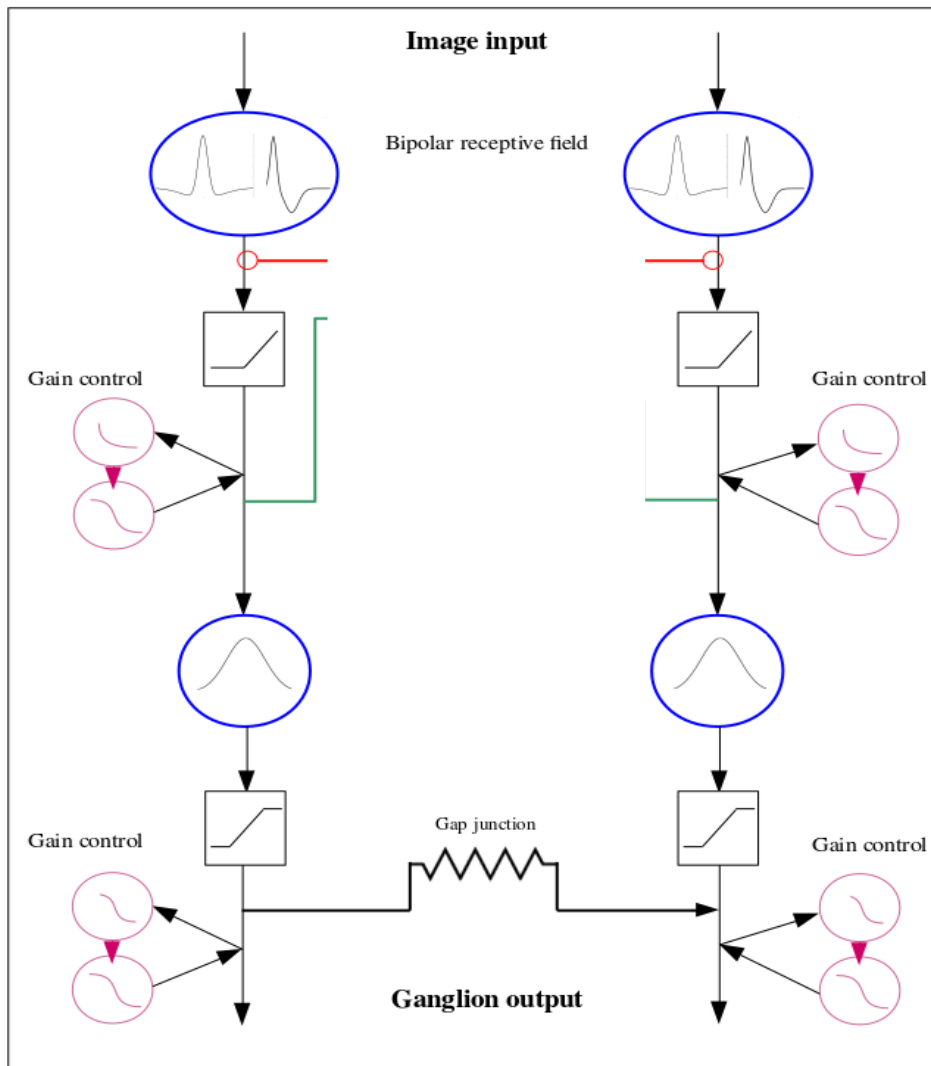
Building a 2D retina model for motion anticipation

Gap junctions connectivity



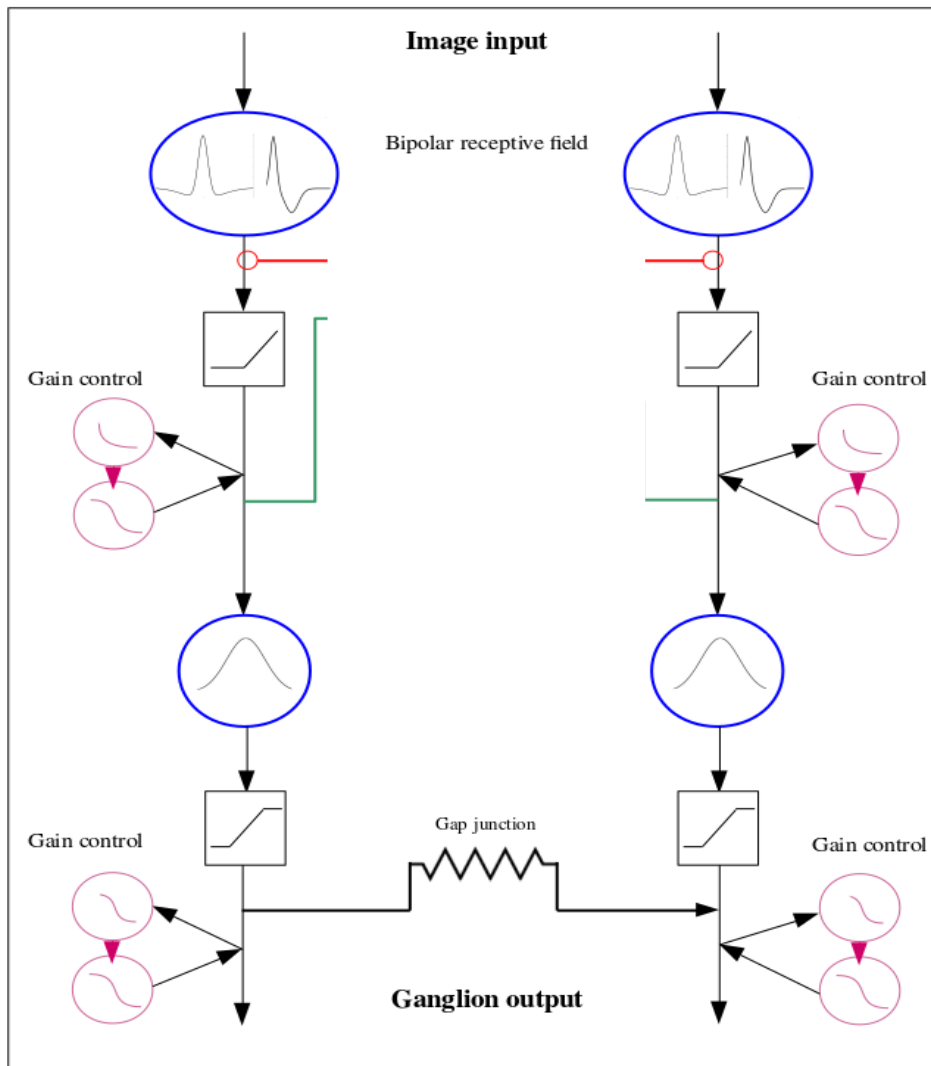
Building a 2D retina model for motion anticipation

Gap junctions connectivity

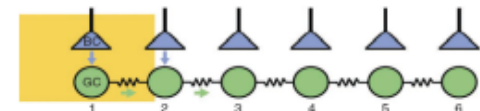


Building a 2D retina model for motion anticipation

Gap junctions connectivity



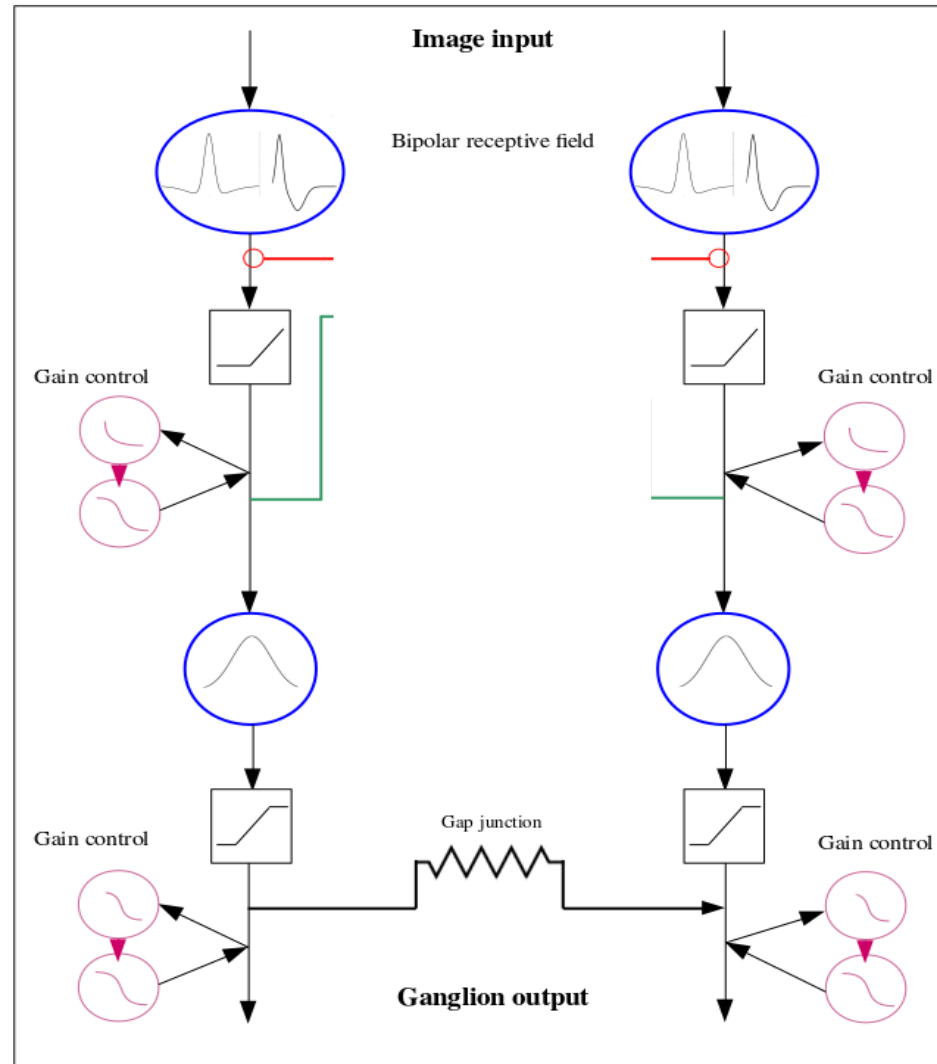
- A class of direction selective RGCs are connected through gap junctions
- Their activity comprises the activity pooled from bipolar cells and the activity coming from the downstream RGCs, in the direction of motion



$$R_{GDk_D} = V_{GDk_D} + \beta R_{GDk_D-1}$$

Building a 2D retina model for motion anticipation

Gap junctions connectivity



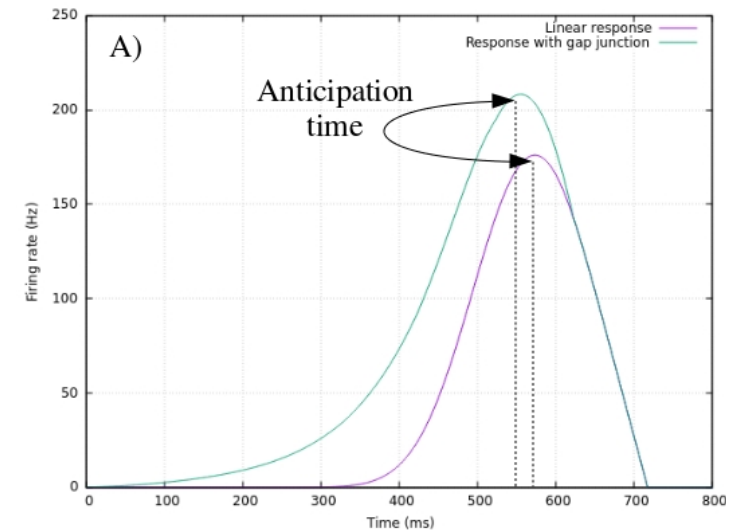
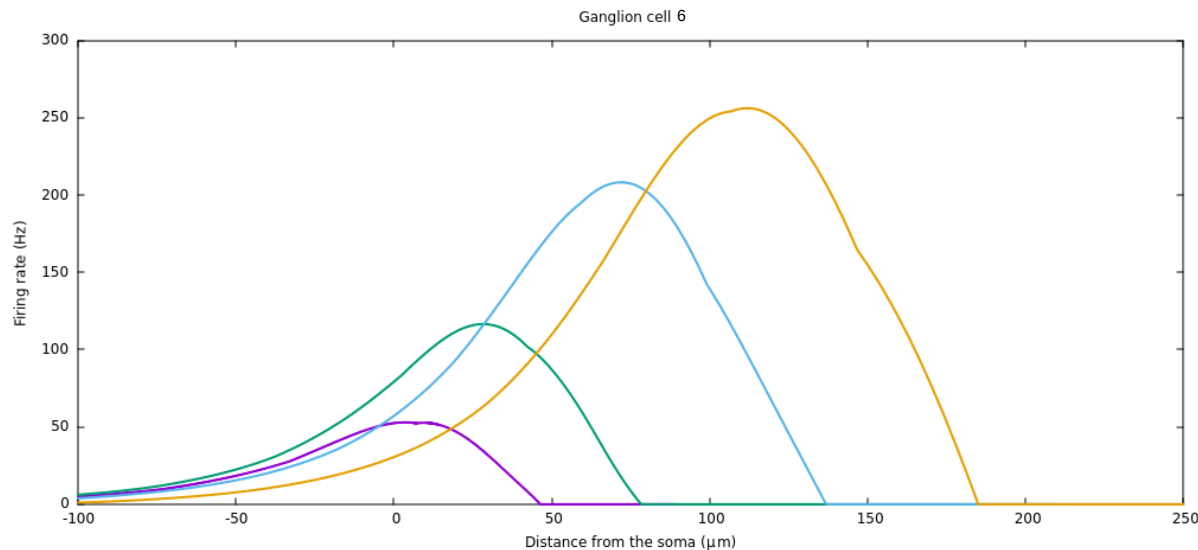
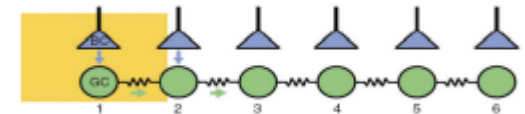
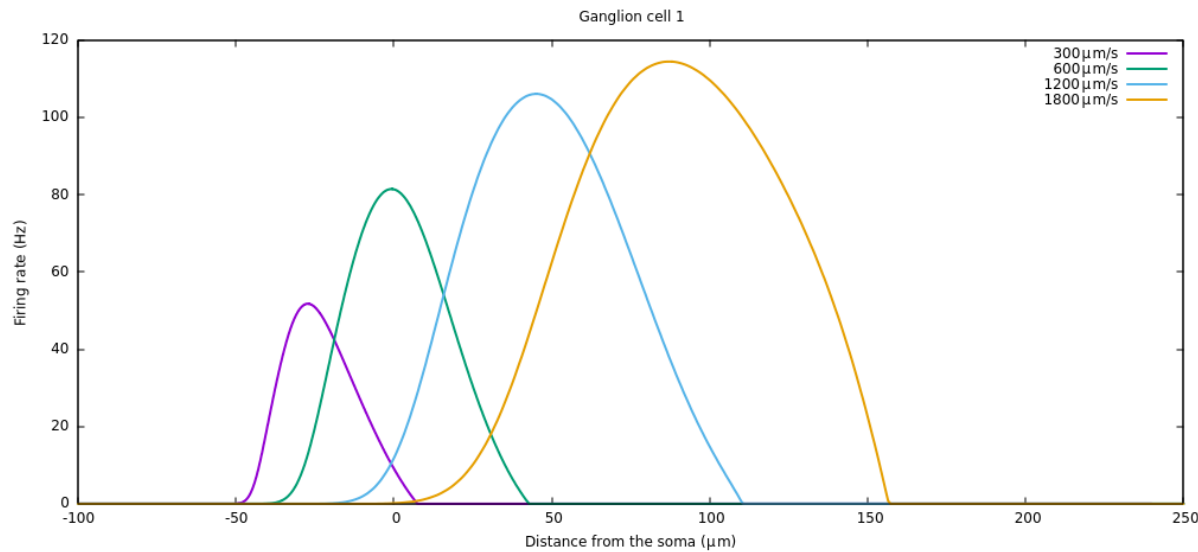
- A class of direction selective RGCs are connected through gap junctions
- Their activity comprises the activity pooled from bipolar cells and the activity coming from the downstream RGCs, in the direction of motion

Diffusive wave of activity ahead of the motion

$$R_{G_D k_D} = V_{G_D k_D} + \beta R_{G_D k_D - 1}$$

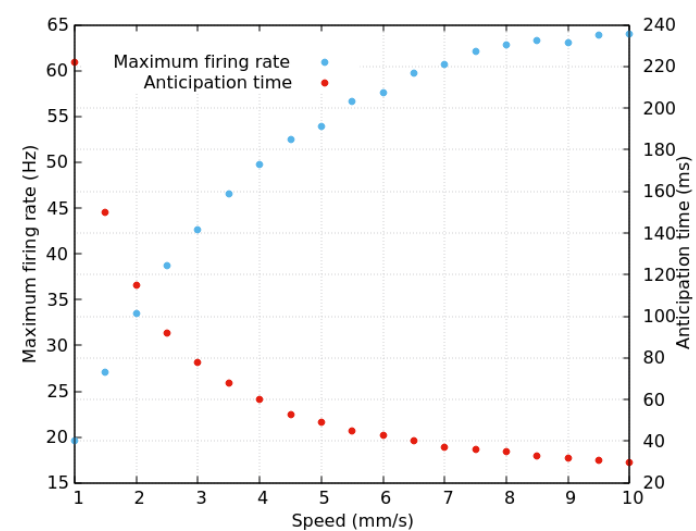
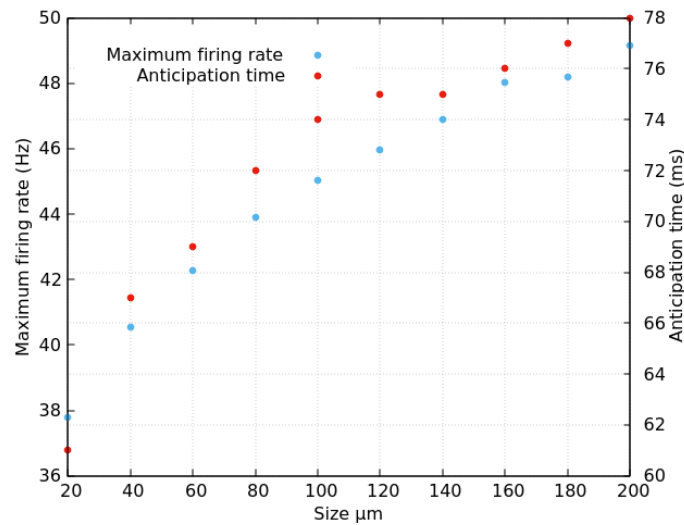
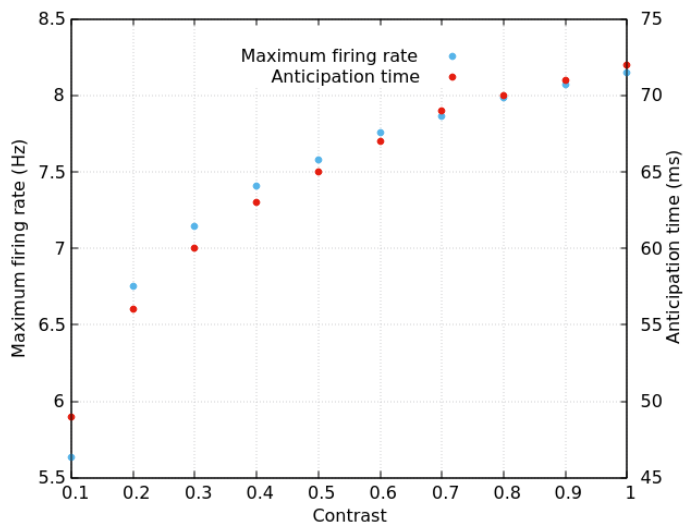
$$R_{G_{Dk_D}} = V_{G_{Dk_D}} + \beta R_{G_{Dk_D-1}}$$

1D results : smooth motion anticipation with gap junctions

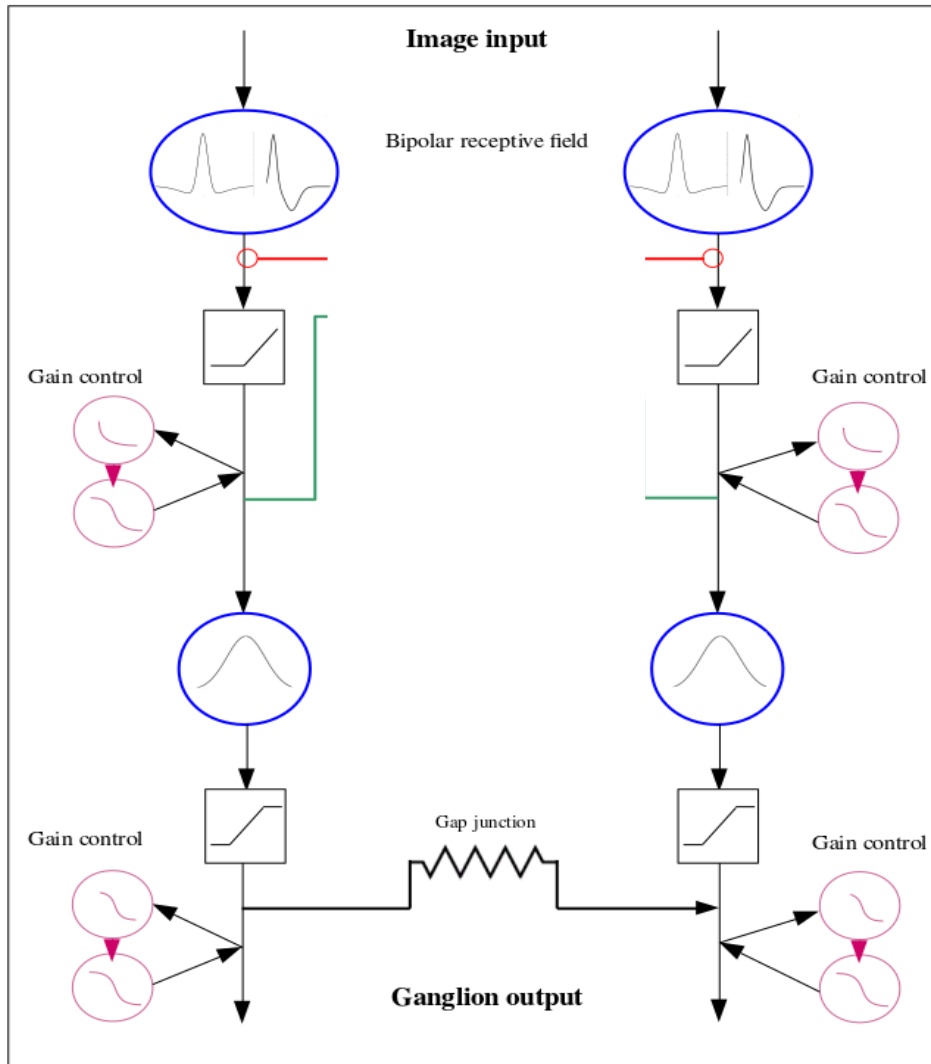


1D results : smooth motion anticipation with gap junctions

Anticipation variability with stimulus
parameters

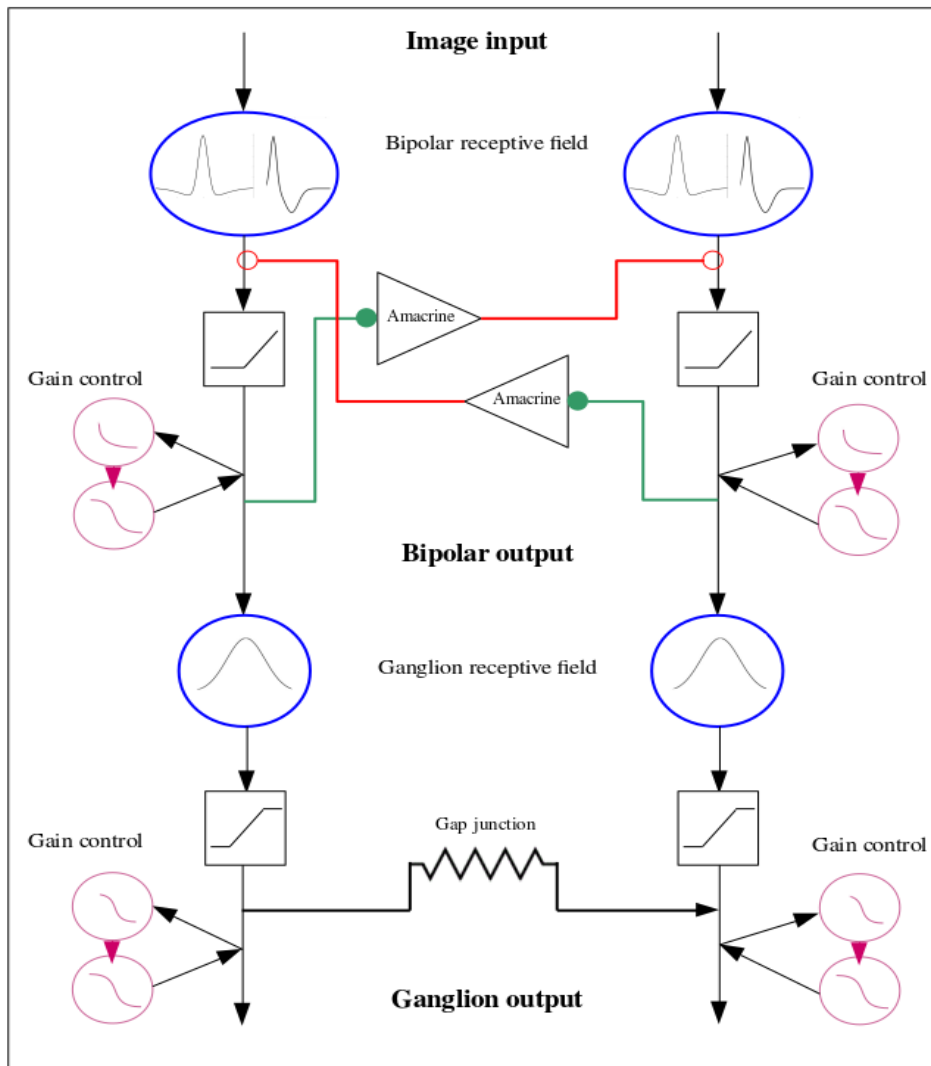


Building a 2D retina model for motion anticipation



Building a 2D retina model for motion anticipation

Amacrine cells connectivity

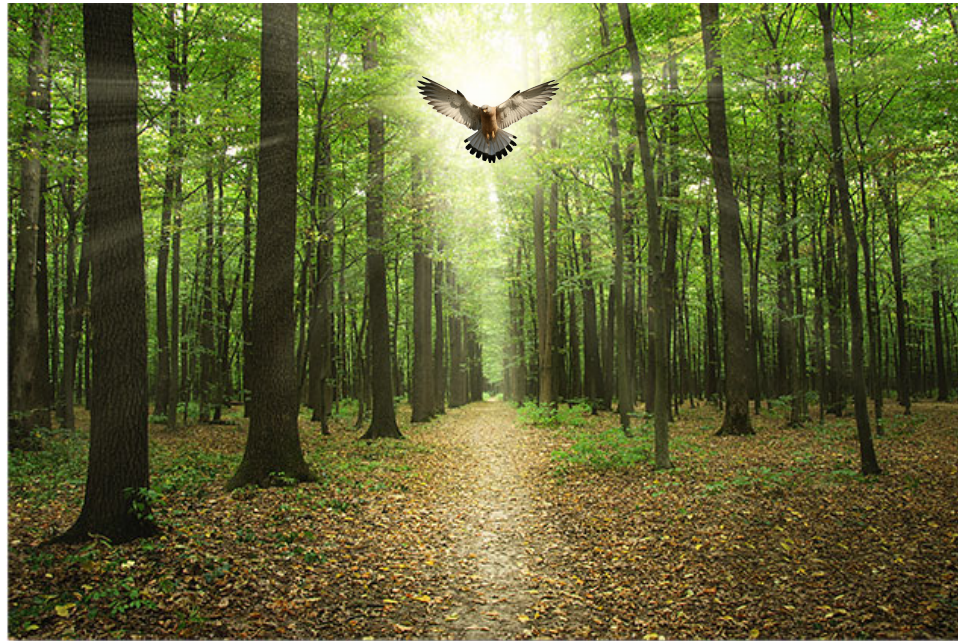


Ganglion cells are **not** independent encoders

Building a 2D retina model for motion anticipation

Amacrine cells connectivity

- A class of RGCs are selective to differential motion



Building a 2D retina model for motion anticipation

Amacrine cells connectivity

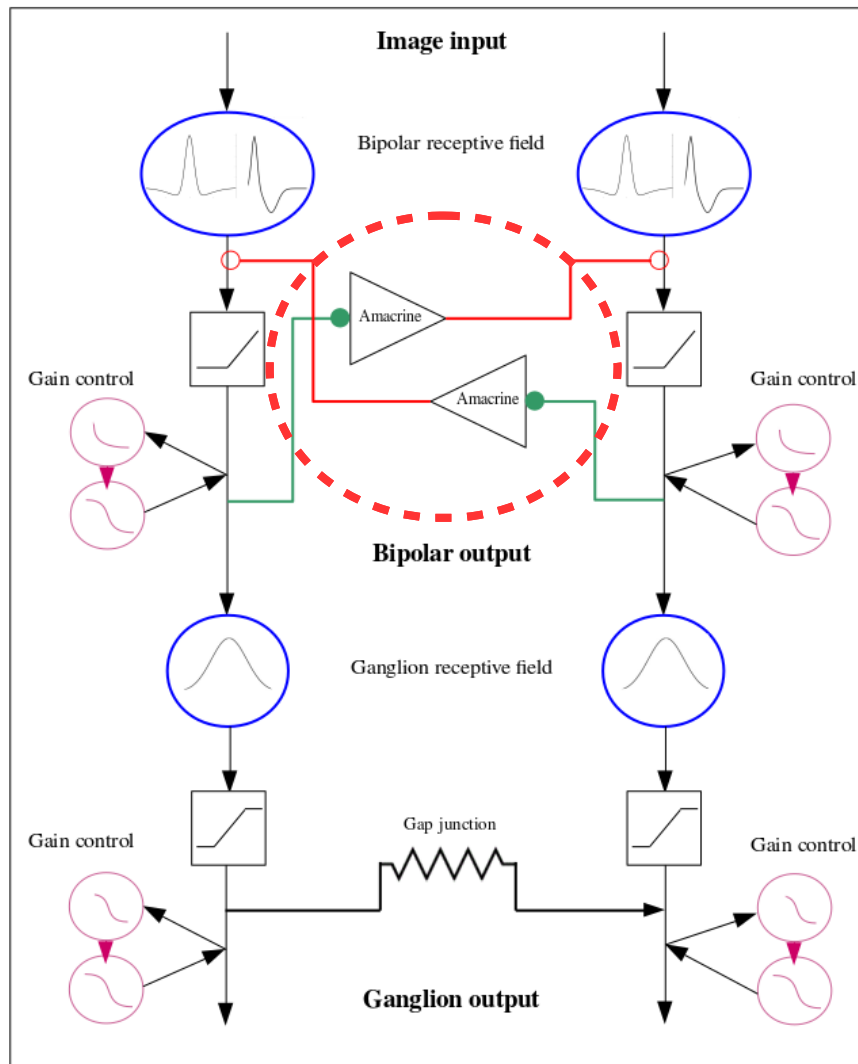
- A class of RGCs are selective to differential motion



- The circuitry involves amacrine cells connectivity upstream of ganglion cells

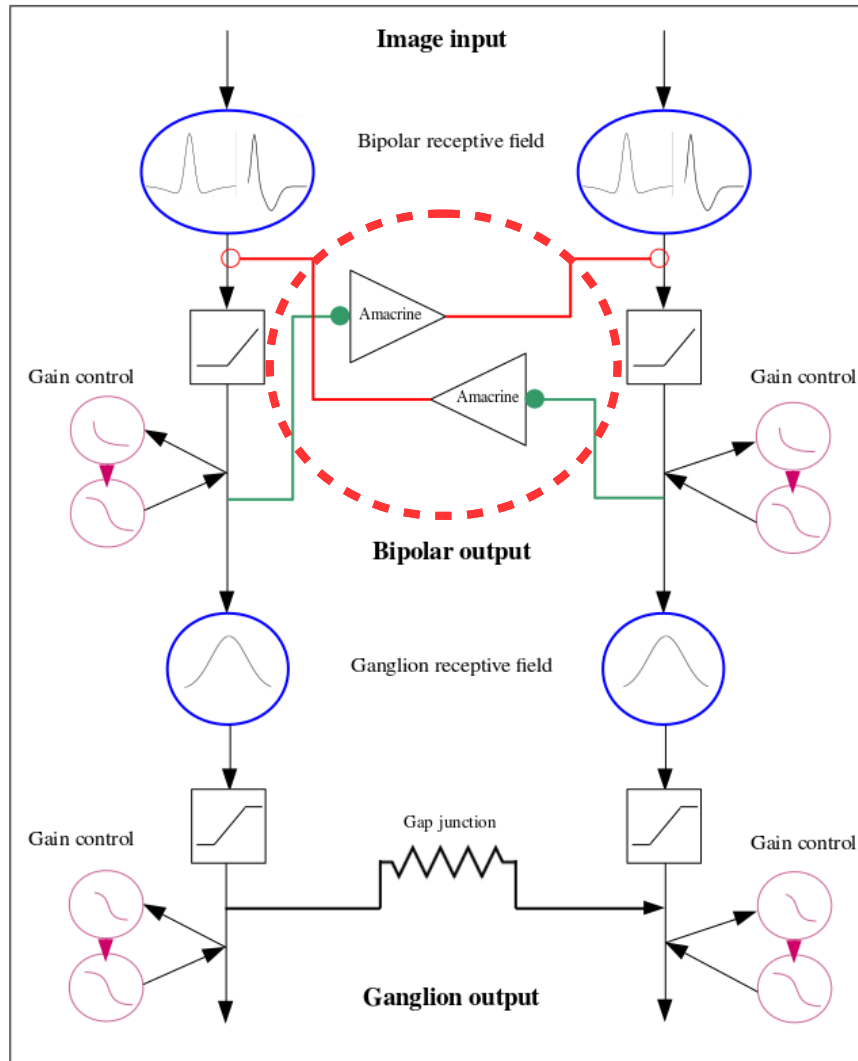
Connectivity pathways

Amacrine cells connectivity



Connectivity pathways

Amacrine cells connectivity



- Bipolar voltage :

$$\frac{dV_{B_i}}{dt} = -\frac{1}{\tau_B} V_{B_i} + \sum_{j=1}^{N_A} W_{B_i}^{A_j} V_{A_j} + F_{B_i}(t).$$

- External drive :

$$F_{B_i}(t) = \left[K_i^{S,t} * \left(\frac{S}{\tau_B} + \frac{dS}{dt} \right) \right] (t)$$

- Amacrine voltage :

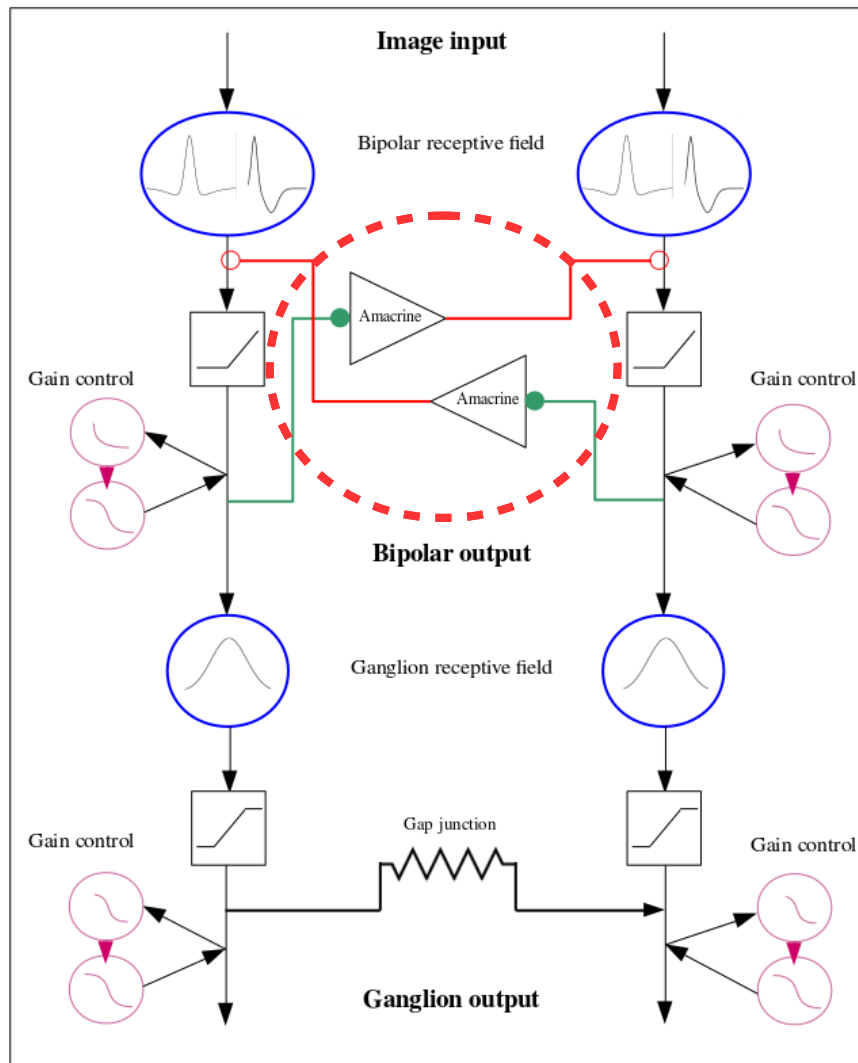
$$\frac{dV_{A_j}}{dt} = -\frac{1}{\tau_A} V_{A_j}(t) + \sum_{i=1}^{N_A} W_{A_j}^{B_i} R_{B_i}(t).$$

- Coupled dynamics :

$$\begin{cases} \frac{dV_{B_i}}{dt} = -\frac{1}{\tau_B} V_{B_i} + \sum_{j=1}^{N_A} W_{B_i}^{A_j} V_{A_j} + F_{B_i}(t) \\ \frac{dA_{B_i}}{dt} = -\frac{A_{B_i}}{\tau_a} + h \mathcal{N}(V_{B_i}(t)), \\ \frac{dV_{A_j}}{dt} = -\frac{1}{\tau_A} V_{A_j}(t) + \sum_{i=1}^{N_A} W_{A_j}^{B_i} R_{B_i}(t). \end{cases}$$

Connectivity pathways

Amacrine cells connectivity



- Bipolar voltage :

$$\frac{dV_{B_i}}{dt} = -\frac{1}{\tau_B} V_{B_i} + \sum_{j=1}^{N_A} W_{B_i}^{A_j} V_{A_j} + F_{B_i}(t).$$

- External drive :

$$F_{B_i}(t) = \left[K_i \frac{S_i}{S_i + 1} \left(\frac{S}{\tau_B} + \frac{dS}{dt} \right) \right] (t)$$

- Amacrine voltage :

Anti diffusive wave of activity ahead of the bar

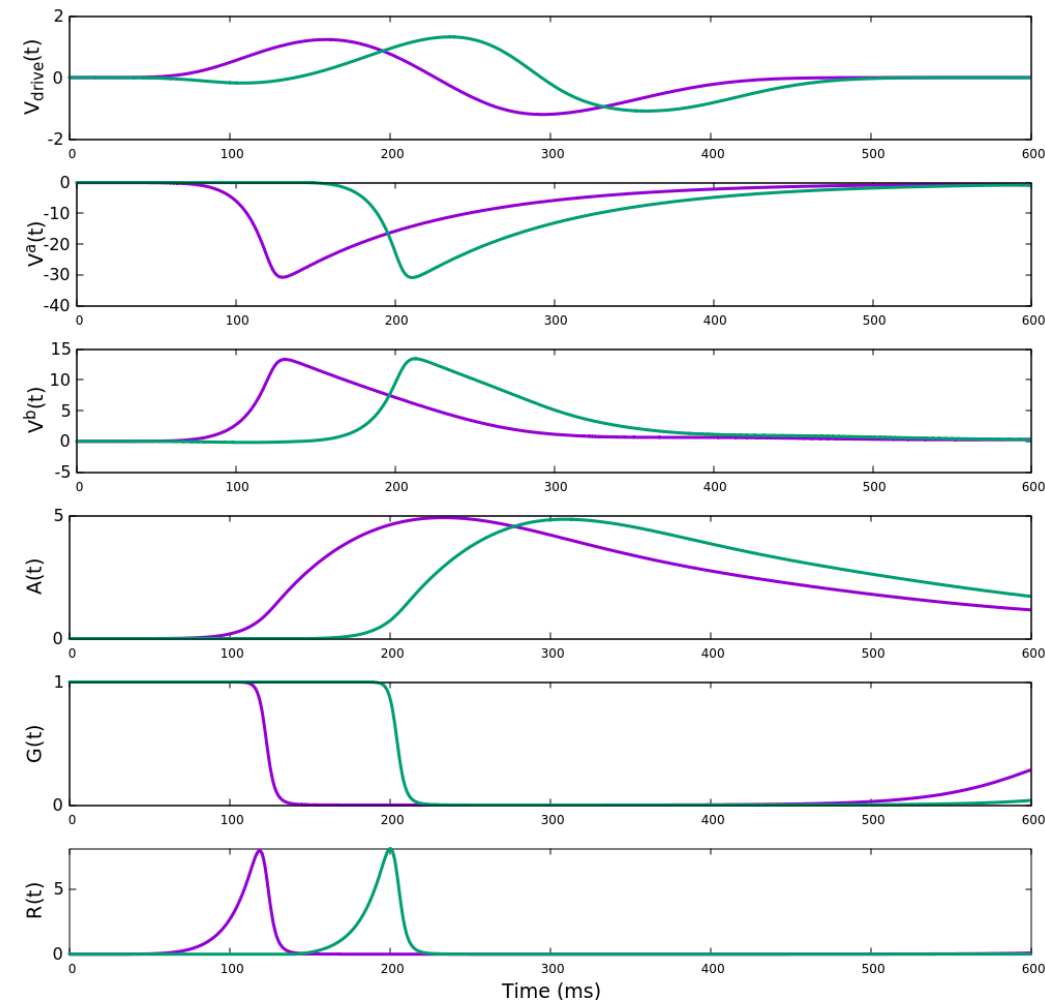
$$\frac{dV_{A_j}}{dt} = -\frac{1}{\tau_A} V_{A_j} + \sum_{i=1}^{N_B} W_{A_j}^{B_i} R_{B_i}(t).$$

- Coupled dynamics :

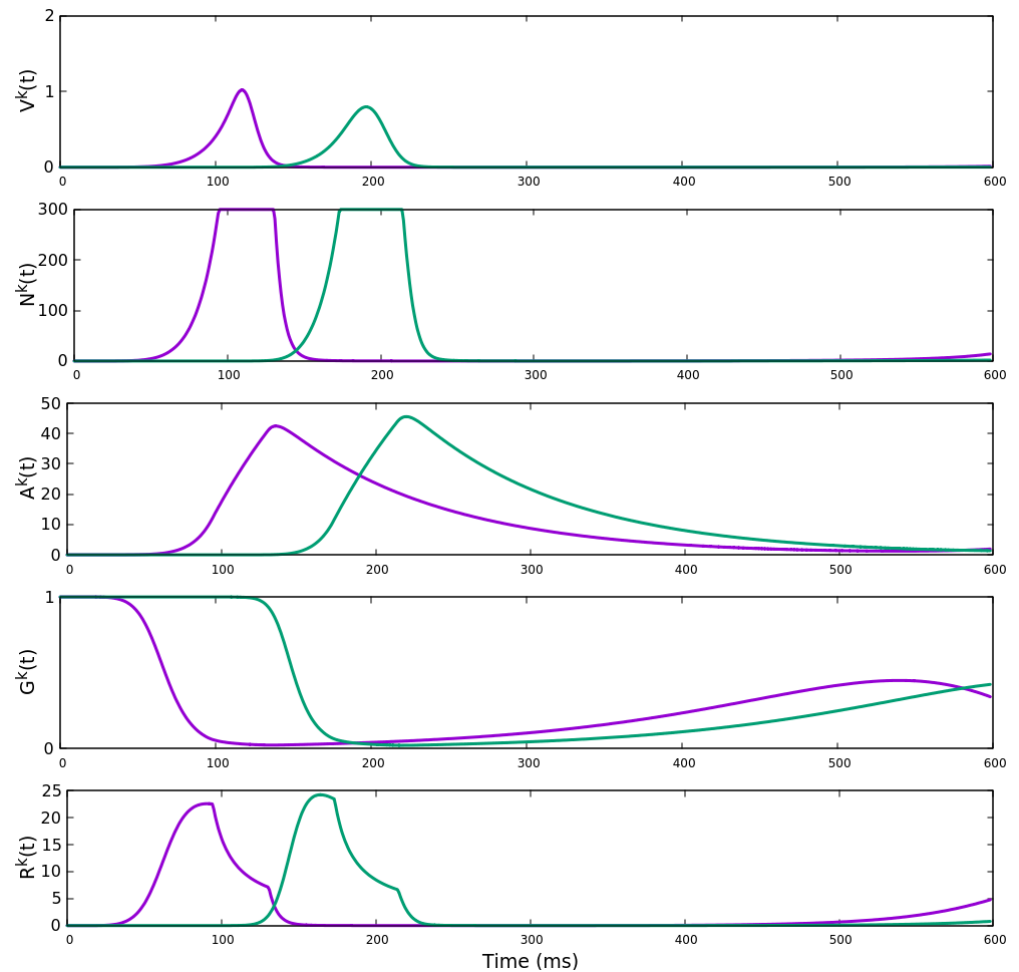
$$\begin{cases} \frac{dV_{B_i}}{dt} = -\frac{1}{\tau_B} V_{B_i} + \sum_{j=1}^{N_A} W_{B_i}^{A_j} V_{A_j} + F_{B_i}(t) \\ \frac{dA_{B_i}}{dt} = -\frac{A_{B_i}}{\tau_a} + h \mathcal{N}(V_{B_i}(t)), \\ \frac{dV_{A_j}}{dt} = -\frac{1}{\tau_A} V_{A_j}(t) + \sum_{i=1}^{N_B} W_{A_j}^{B_i} R_{B_i}(t). \end{cases}$$

1D results : smooth motion anticipation with amacrine connectivity

Bipolar layer

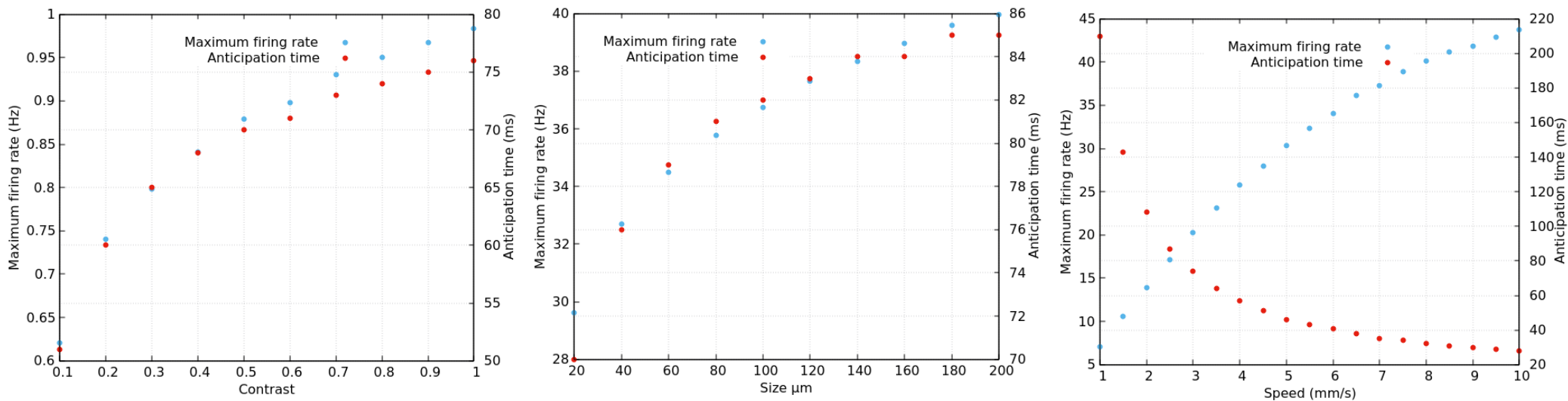


Ganglion layer

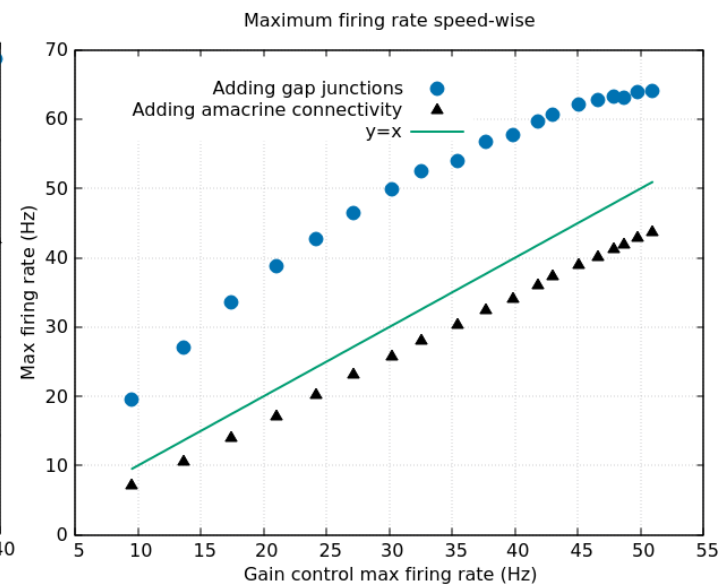
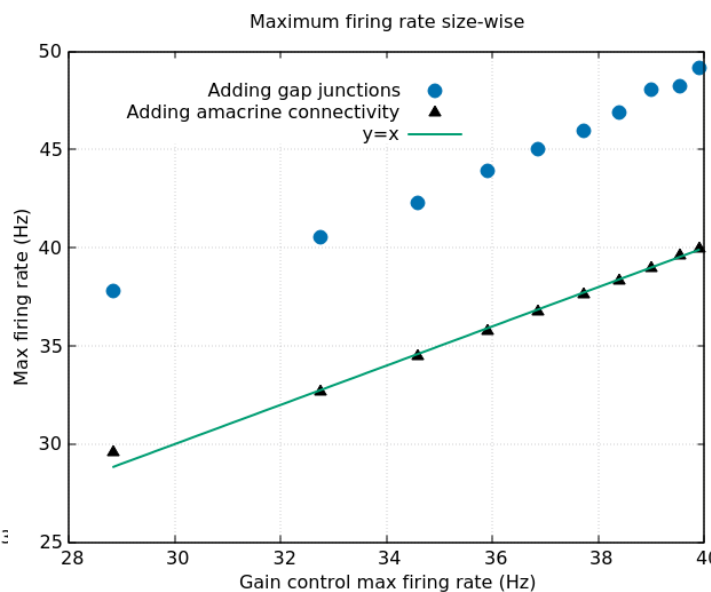
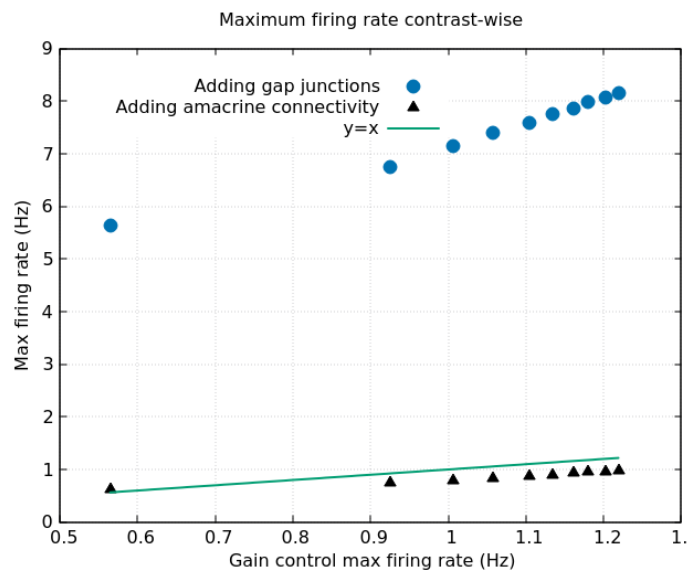
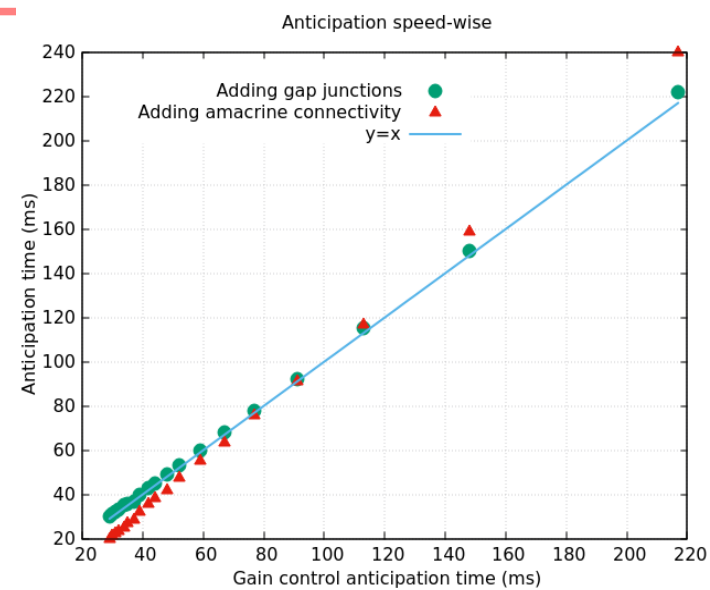
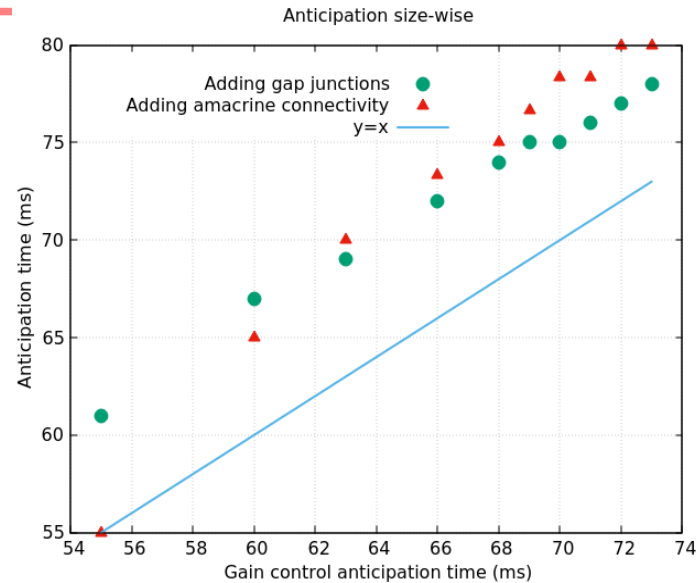
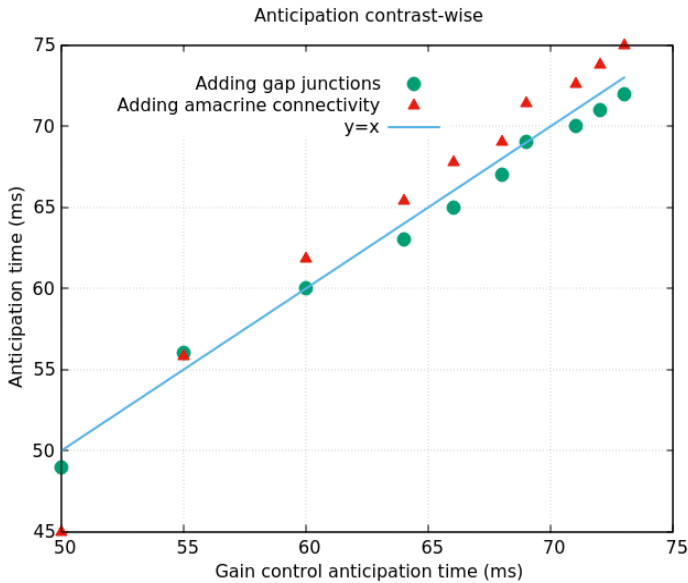


1D results : smooth motion anticipation with amacrine connectivity

Anticipation variability with stimulus
parameters

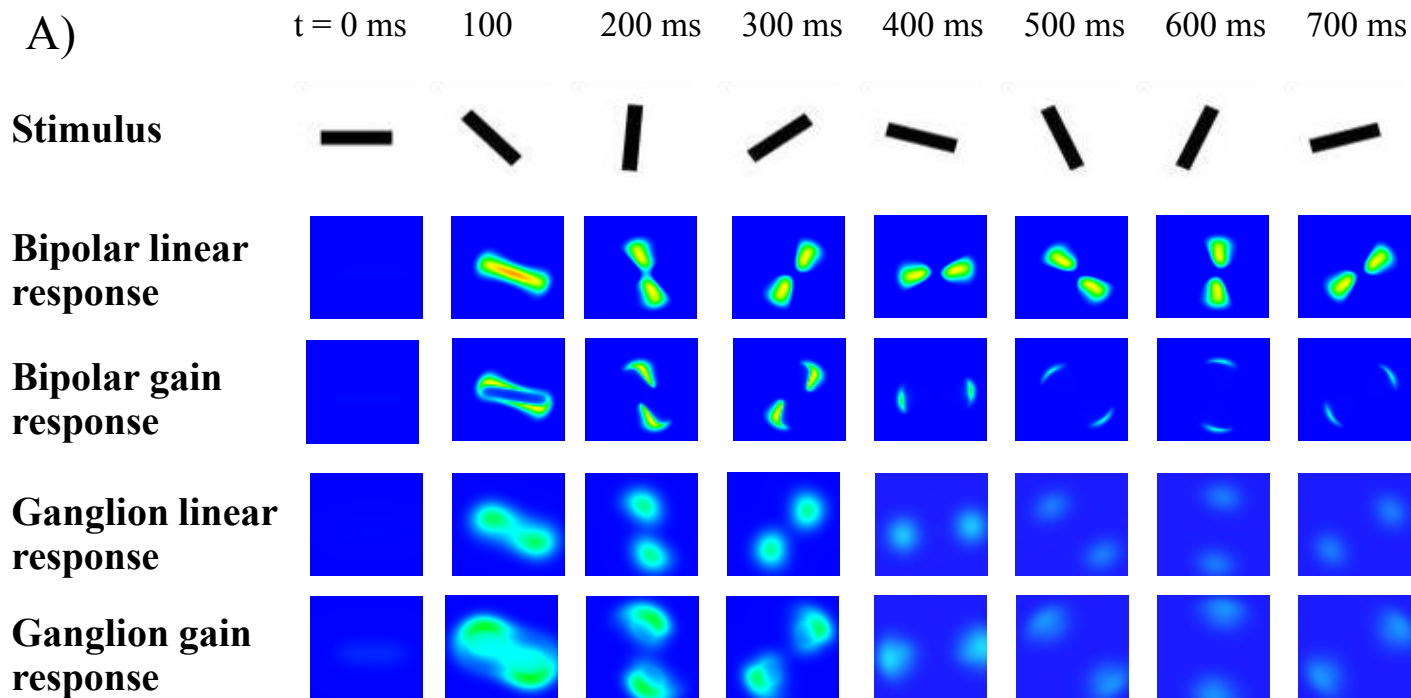


Comparing the performance of the three layers

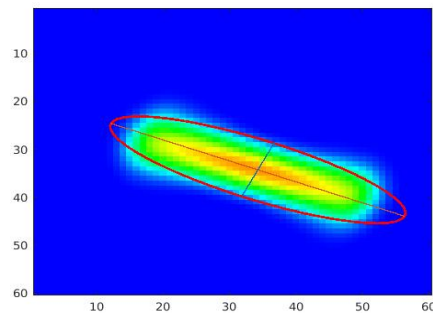


Suggesting new experiments : 2D results

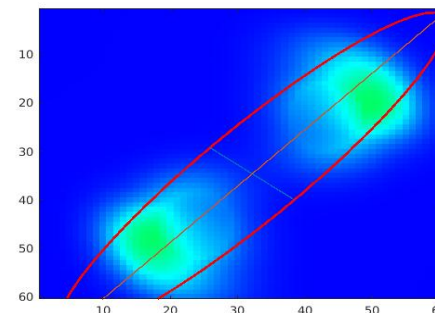
1) Angular anticipation



B)

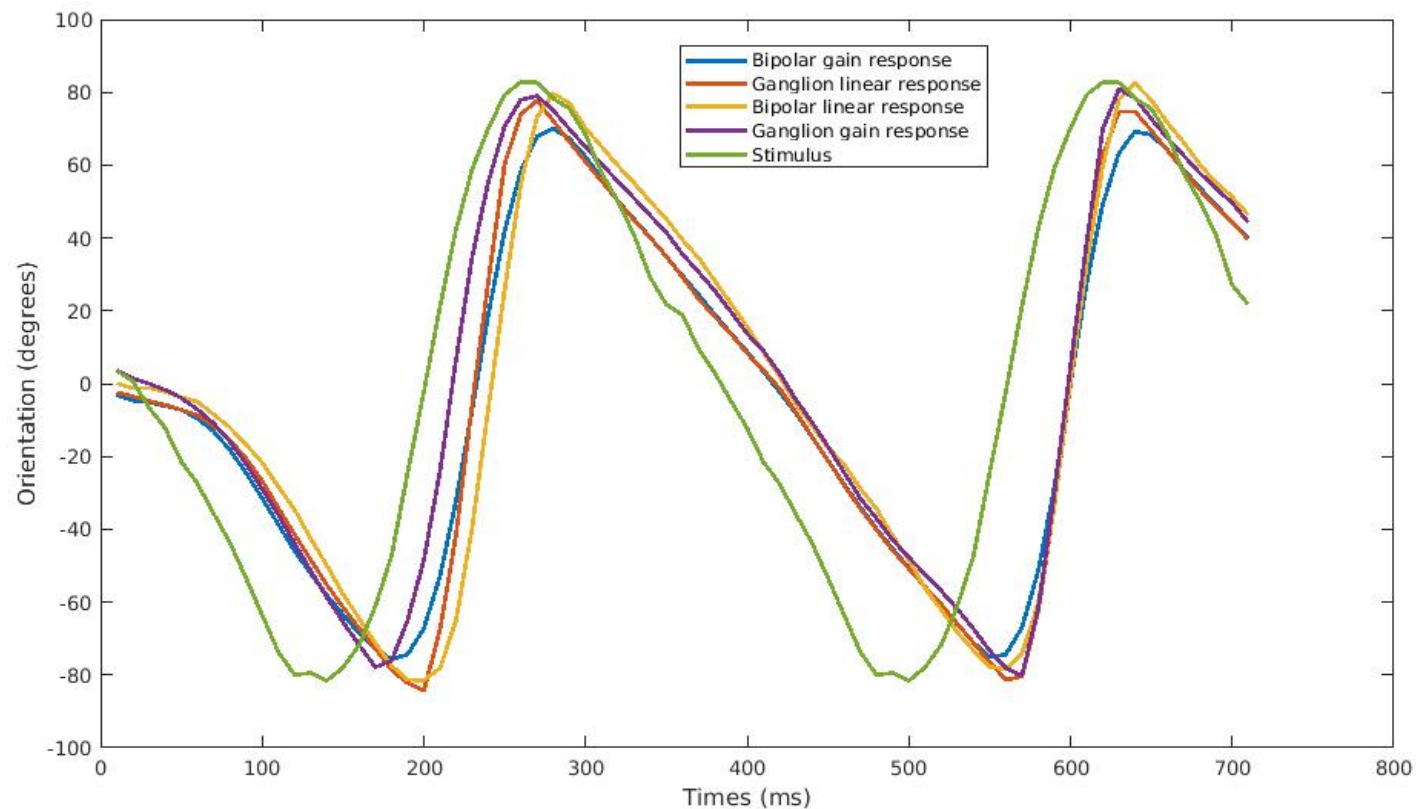


C)



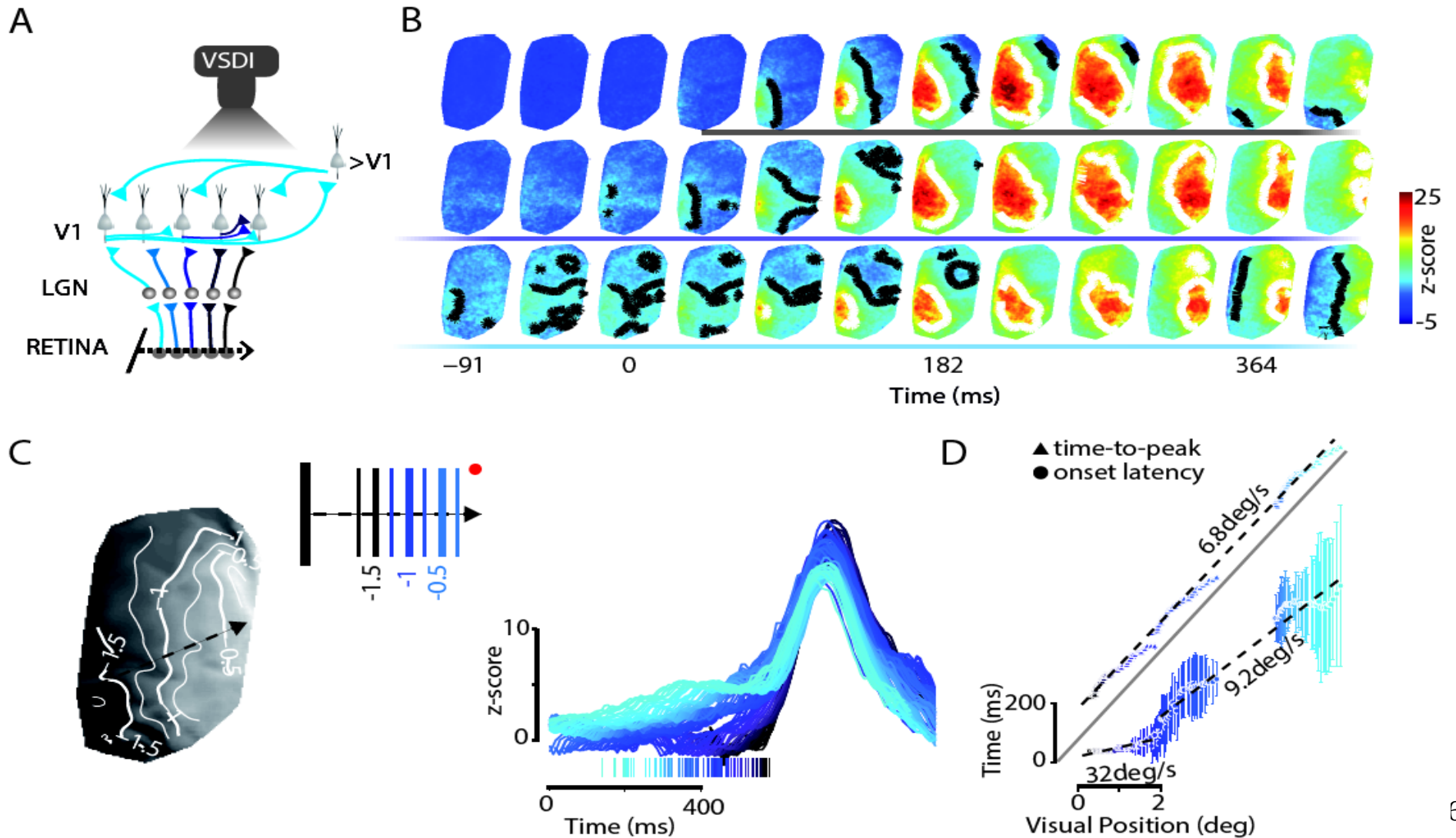
Suggesting new experiments : 2D results

1) Angular anticipation



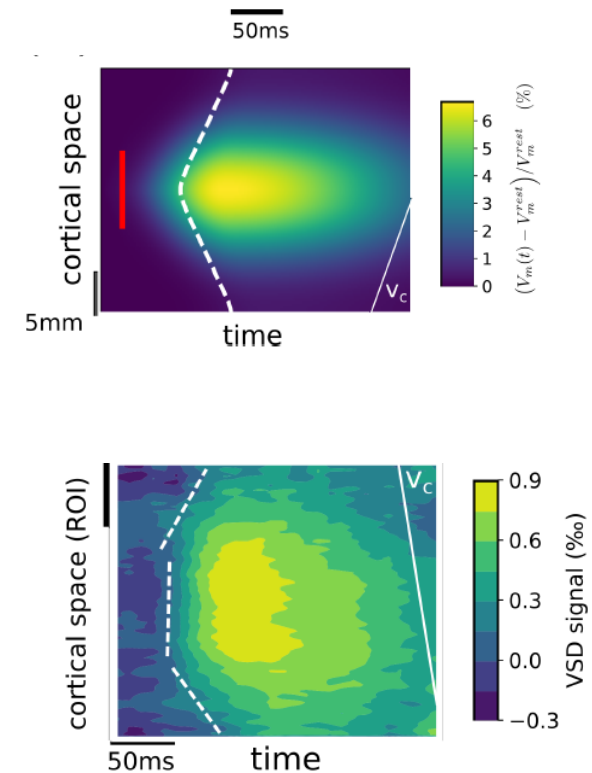
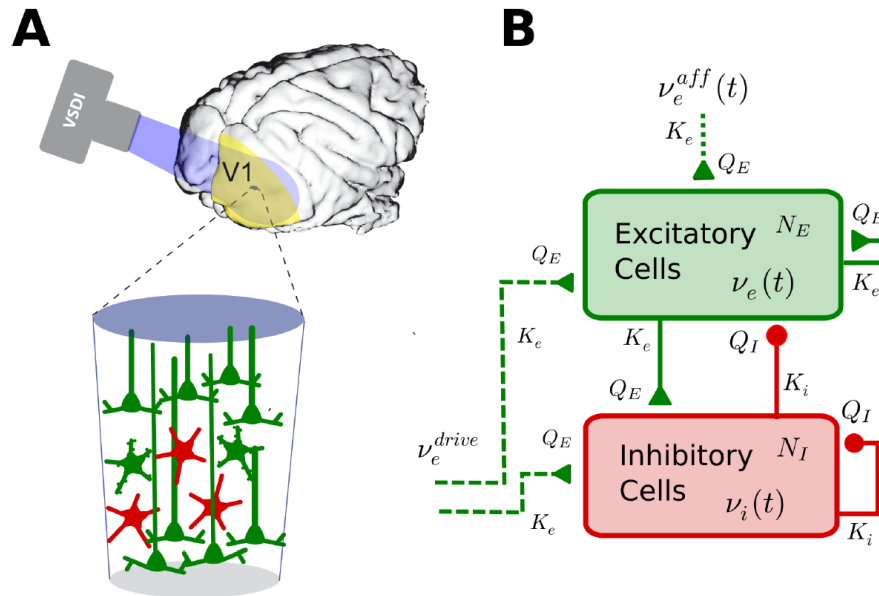
Anticipation in V1

Anticipation in V1



A mean field model to reproduce VSDI recordings

Zerlaut et al 2016
Chemla et al 2018



A mean field model to reproduce VSDI recordings

Zerlaut et al 2016
Chemla et al 2018

Master equation for first and second moments local population dynamics (El Boustani and Destexhe, 2009) read :

$$\left\{ \begin{array}{l} T \frac{\partial \nu_\mu}{\partial t} = (\mathcal{F}_\mu - \nu_\mu) + \frac{1}{2} c_{\lambda\eta} \frac{\partial^2 \mathcal{F}_\mu}{\partial \nu_\lambda \partial \nu_\eta} \\ T \frac{\partial c_{\lambda\eta}}{\partial t} = A_{\lambda\eta} + (\mathcal{F}_\lambda - \nu_\lambda) (\mathcal{F}_\eta - \nu_\eta) + \\ \quad c_{\lambda\mu} \frac{\partial \mathcal{F}_\mu}{\partial \nu_\lambda} + c_{\mu\eta} \frac{\partial \mathcal{F}_\mu}{\partial \nu_\eta} - 2c_{\lambda\eta} \end{array} \right. \longrightarrow T \frac{\partial \nu_\mu}{\partial t} = \mathcal{F}_\mu - \nu_\mu$$

$$A_{\lambda\eta} = \begin{cases} \frac{\mathcal{F}_\lambda (1/T - \mathcal{F}_\lambda)}{N_\lambda} & \text{if } \lambda = \eta \\ 0 & \text{otherwise} \end{cases}$$

A mean field model to reproduce VSDI recordings

Zerlaut et al 2016
Chemla et al 2018

Master equation for first and second moments local population dynamics (El Boustani and Destexhe, 2009) read :

$$\begin{cases} T \frac{\partial \nu_\mu}{\partial t} = (\mathcal{F}_\mu - \nu_\mu) + \frac{1}{2} c_{\lambda\eta} \frac{\partial^2 \mathcal{F}_\mu}{\partial \nu_\lambda \partial \nu_\eta} \\ T \frac{\partial c_{\lambda\eta}}{\partial t} = A_{\lambda\eta} + (\mathcal{F}_\lambda - \nu_\lambda)(\mathcal{F}_\eta - \nu_\eta) + \\ \quad c_{\lambda\mu} \frac{\partial \mathcal{F}_\mu}{\partial \nu_\lambda} + c_{\mu\eta} \frac{\partial \mathcal{F}_\mu}{\partial \nu_\eta} - 2c_{\lambda\eta} \end{cases} \rightarrow T \frac{\partial \nu_\mu}{\partial t} = \mathcal{F}_\mu - \nu_\mu$$

$$A_{\lambda\eta} = \begin{cases} \frac{\mathcal{F}_\lambda (1/T - \mathcal{F}_\lambda)}{N_\lambda} & \text{if } \lambda = \eta \\ 0 & \text{otherwise} \end{cases}$$

Affords a retino thalamic input

A mean field model to reproduce VSDI recordings

Zerlaut et al 2016
Chemla et al 2018

Single neuron model (The adaptative exponential integrate and fire model Brette and Gerstner, 2005)

$$\begin{cases} C_m \frac{dV}{dt} = g_L (E_L - V) + I_{syn}(V, t) + k_a e^{\frac{V - V_{thre}}{k_a}} - I_w \\ \tau_w \frac{dI_w}{dt} = -I_w + a \cdot (V - E_L) + \sum_{t_s \in \{t_{spike}\}} b \delta(t - t_s) \end{cases}$$

The conductance-based exponential synapse

$$I_{syn}(V, t) = \sum_{s \in \{e, i\}} \sum_{t_s \in \{t_s\}} Q_s (E_s - V) e^{-\frac{t - t_s}{\tau_s}} \mathcal{H}(t - t_s)$$

Semi analytical transfer function :

$$\nu_{out} = \mathcal{F}(\nu_e, \nu_i) = \frac{1}{2\tau_V} \cdot \text{Erfc}\left(\frac{V_{thre}^{eff} - \mu_V}{\sqrt{2}\sigma_V}\right) \quad \text{with} \quad V_{thre}^{eff}(\mu_V, \sigma_V, \tau_V^N) = P_0 + \sum_{x \in \{\mu_V, \sigma_V, \tau_V^N\}} P_x \cdot \left(\frac{x - x^0}{\delta x^0}\right) + P_{\mu_G} \log\left(\frac{\mu_G}{g_L}\right) \\ + \sum_{x, y \in \{\mu_V, \sigma_V, \tau_V^N\}^2} P_{xy} \cdot \left(\frac{x - x^0}{\delta x^0}\right) \left(\frac{y - y^0}{\delta y^0}\right)$$

A mean field model to reproduce VSDI recordings

Zerlaut et al 2016
Chemla et al 2018

The mean, standard deviation and auto-correlation time of the excitatory and inhibitory conductance read :

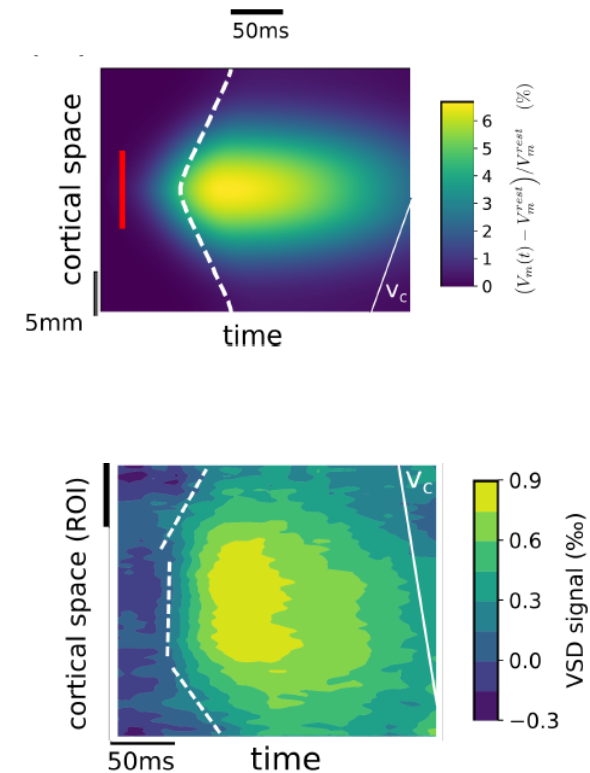
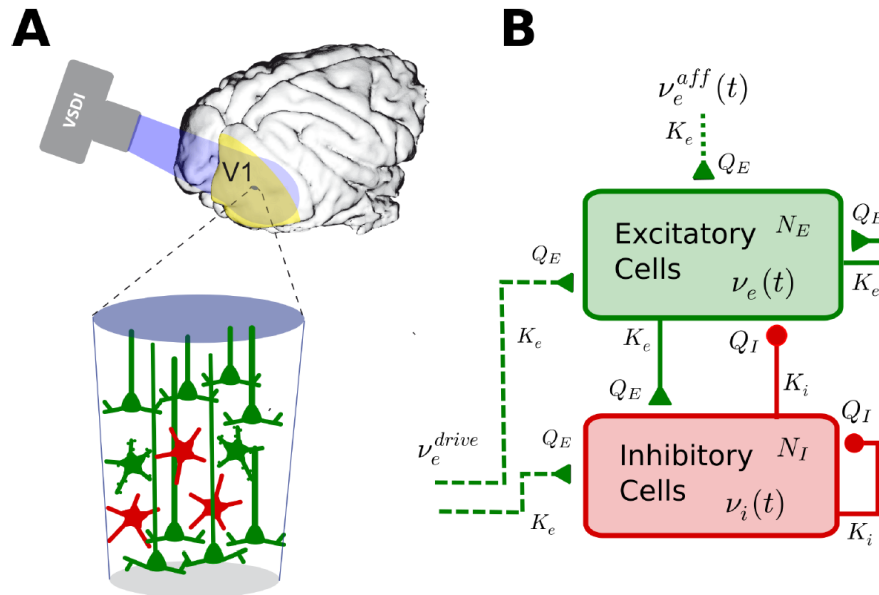
$$\begin{array}{ll}
 \mu_{Ge}(\nu_e, \nu_i) = \nu_e K_e \tau_e Q_e & \longrightarrow \mu_G(\nu_e, \nu_i) = \mu_{Ge} + \mu_{Gi} + g_L \\
 \sigma_{Ge}(\nu_e, \nu_i) = \sqrt{\frac{\nu_e K_e \tau_e}{2}} Q_e & \tau_m(\nu_e, \nu_i) = \frac{C_m}{\mu_G} \\
 \mu_{Gi}(\nu_e, \nu_i) = \nu_i K_i \tau_i Q_i & \downarrow \\
 \sigma_{Gi}(\nu_e, \nu_i) = \sqrt{\frac{\nu_i K_i \tau_i}{2}} Q_i & \mu_V(\nu_e, \nu_i) = \frac{\mu_{Ge} E_e + \mu_{Gi} E_i + g_L E_L}{\mu_G} \\
 & \sigma_V(\nu_e, \nu_i) = \sqrt{\sum_s K_s \nu_s \frac{(U_s \cdot \tau_s)^2}{2(\tau_m^{\text{eff}} + \tau_s)}} \\
 & \tau_V(\nu_e, \nu_i) = \left(\frac{\sum_s (K_s \nu_s (U_s \cdot \tau_s)^2)}{\sum_s (K_s \nu_s (U_s \cdot \tau_s)^2 / (\tau_m^{\text{eff}} + \tau_s))} \right)
 \end{array}$$

Finally, the transfer function reads :

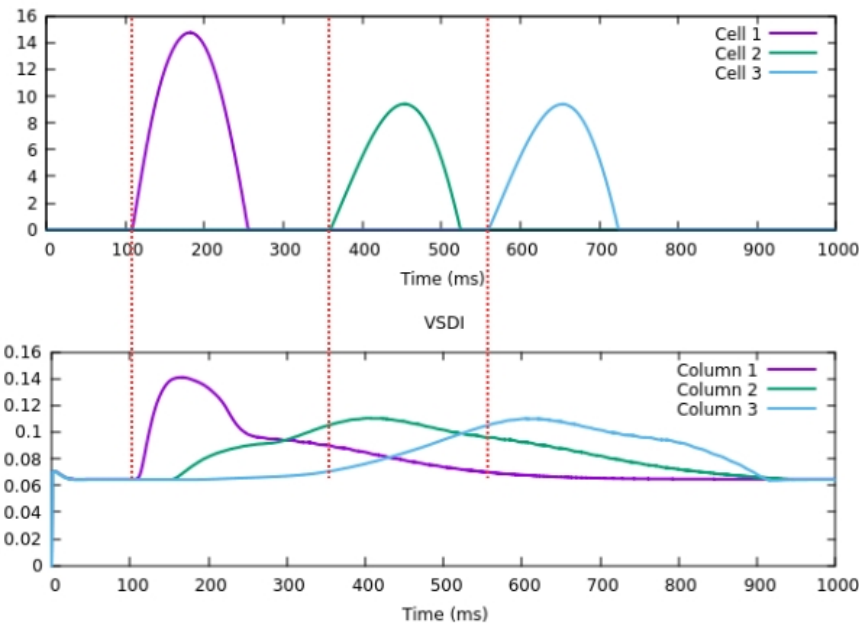
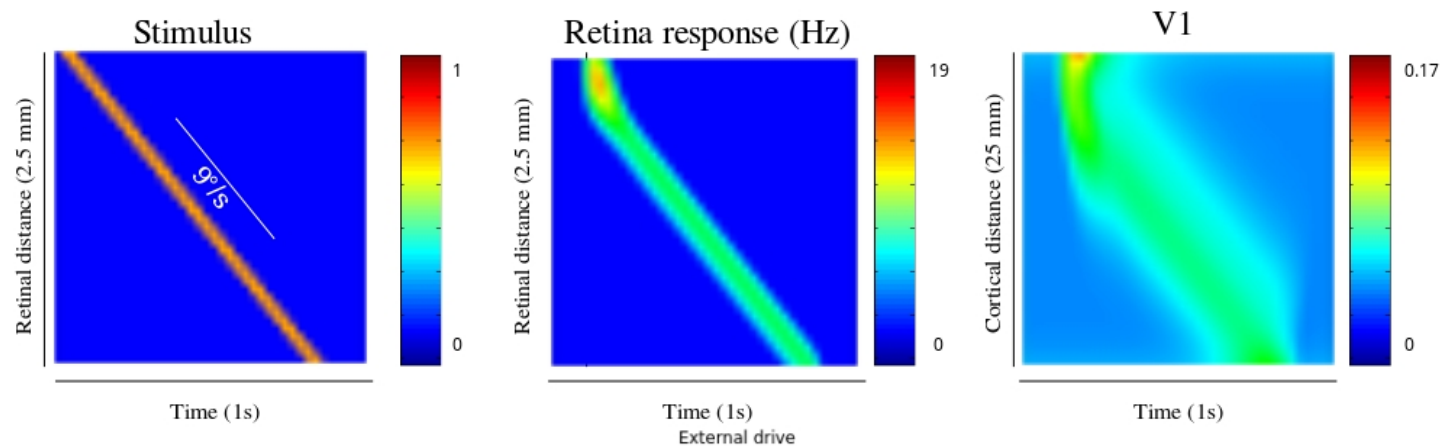
$$\nu_{out} = \mathcal{F}(\nu_e, \nu_i) = \frac{1}{2\tau_V} \cdot \text{Erfc}\left(\frac{V_{thre}^{eff} - \mu_V}{\sqrt{2}\sigma_V}\right)$$

A mean field model to reproduce VSDI recordings

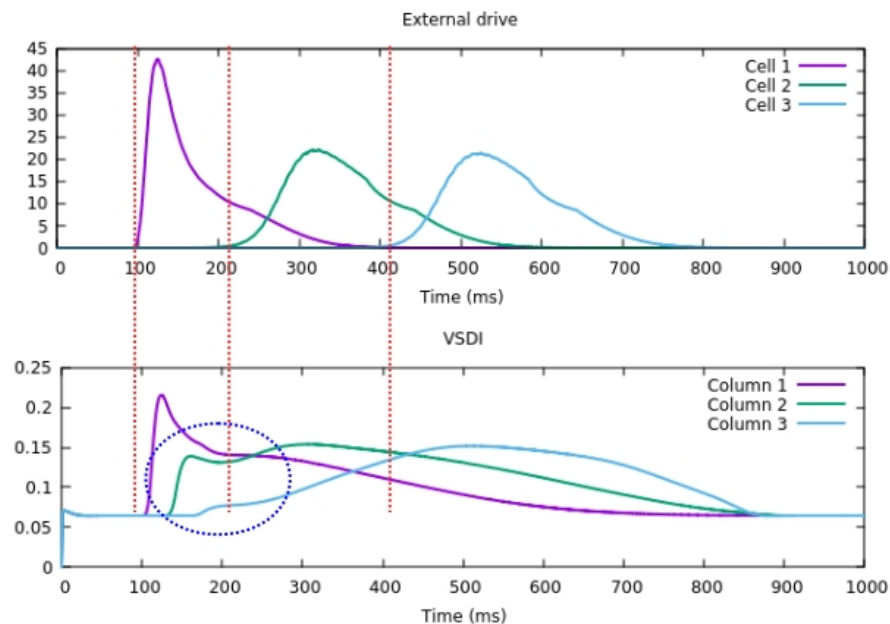
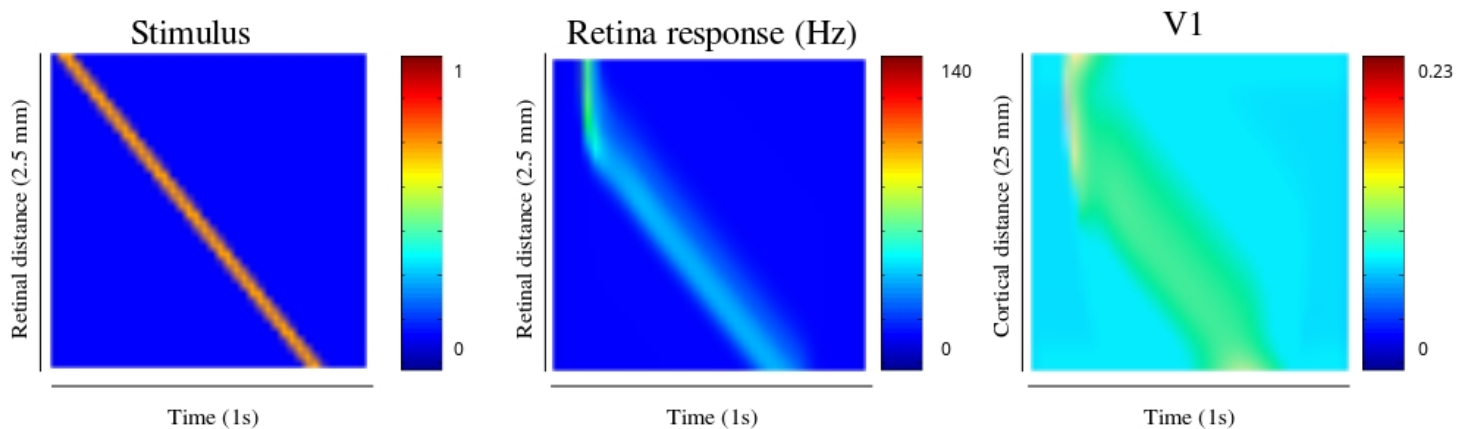
Zerlaut et al 2016
Chemla et al 2018



Response of the cortical model to a LN retina drive

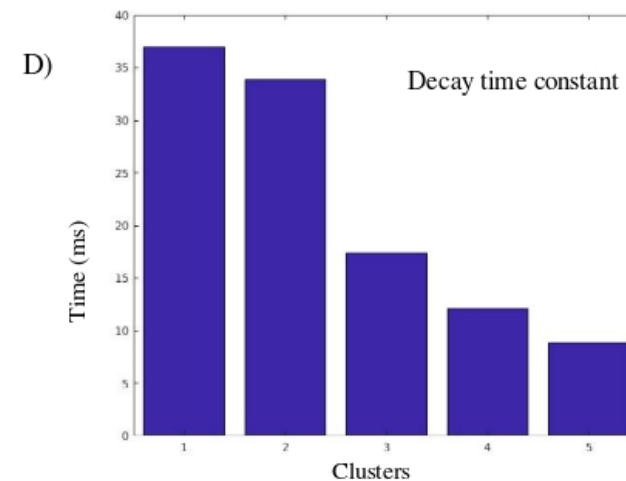
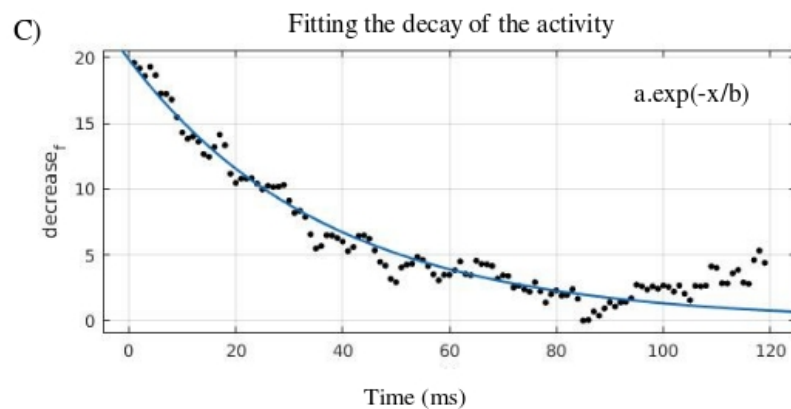
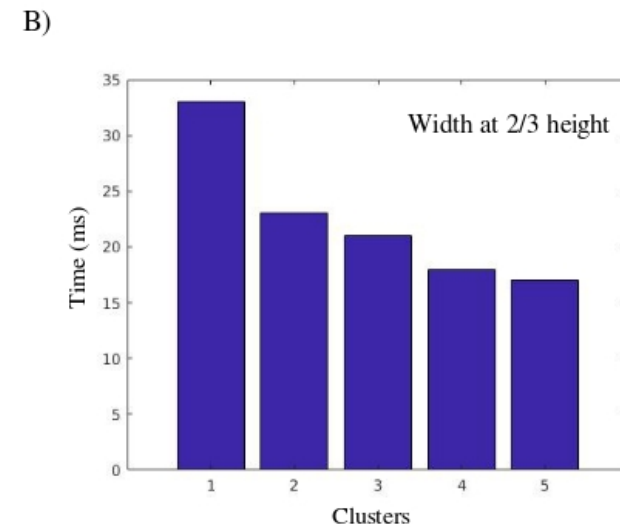
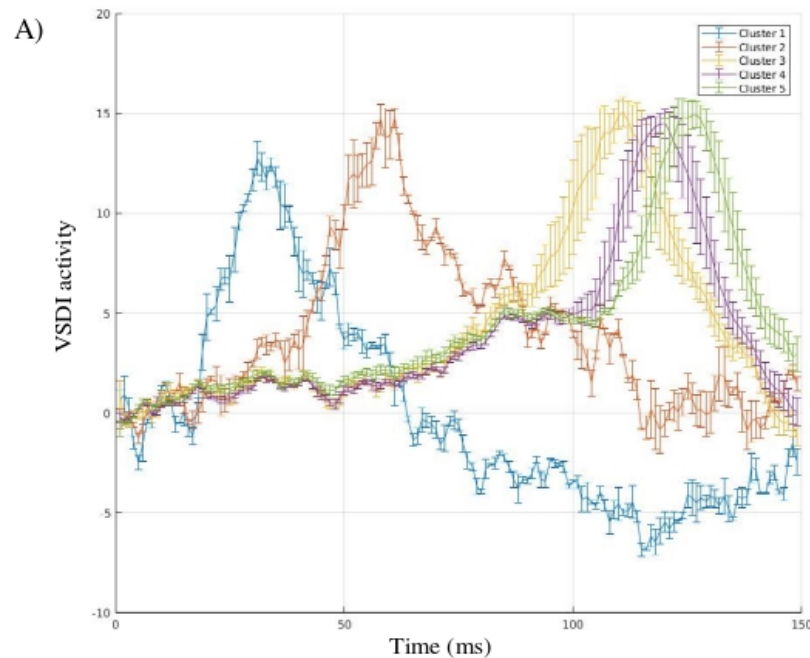


Response of the cortical model to a retina drive with gain control



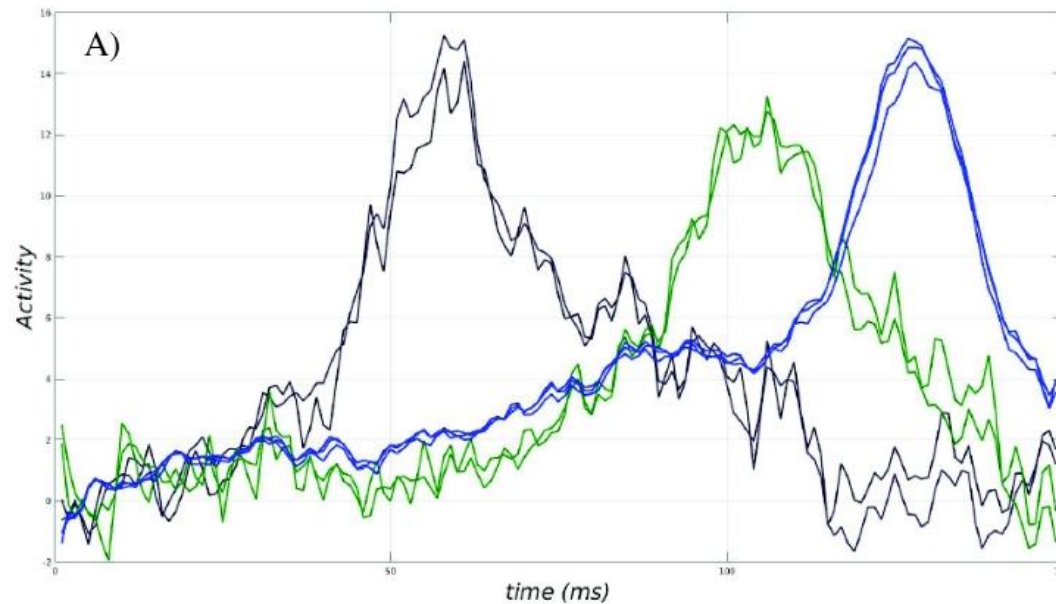
Anticipation in the cortex : VSDI data analysis

(Data courtesy of F. Chavane et S. Chemla)

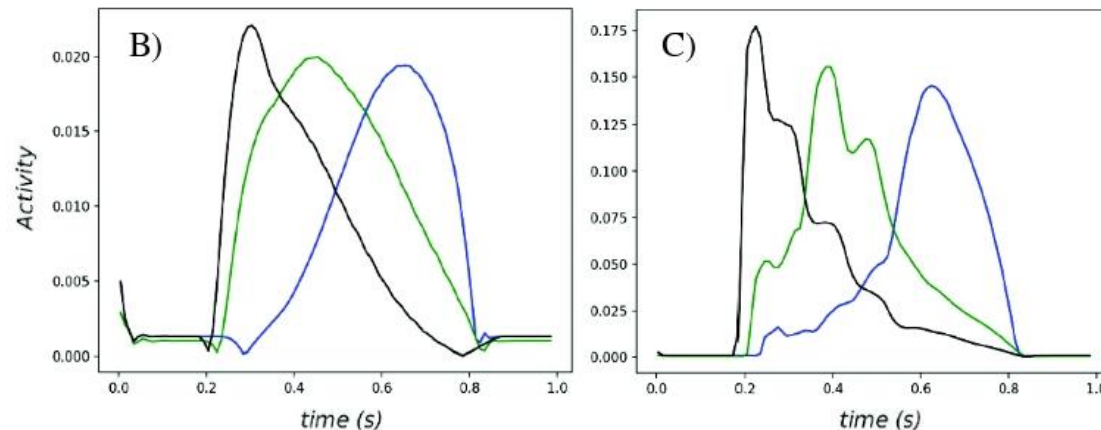


Comparing simulation results to VSDI recordings

Cortex experimental recordings



Simulation results
Response to an LN
model of the retina



Simulation results
Response to a gain
control model of the
retina

Conclusions

- We developed a 2D retina with three ganglion cell layers, implementing gain control and connectivity.
- We use the output of our model as an input to a mean field model of V1, and were able to reproduce anticipation as observed in VSDI

Conclusions

- How to improve object identification
 - 1) exploring the model's parameters and
 - 2) using connectivity ?
- Is our model able to anticipate more complex trajectories, with accelerations for instance ?
- How to calibrate connectivity using biology ?
- How does anticipation affect higher order correlations ?
- Would it be possible to design psycho-physical tests clearly showing the role of the retina in visual anticipation ?

Thank you for your attention !