



HAL
open science

Mathematical modeling of differential effects of neo-adjuvant Sunitinib on primary tumor and metastatic growth

Chiara Nicolò, Michalis Matri, Amanda Tracz, John M.L. Ebos, Sébastien Benzekry

► To cite this version:

Chiara Nicolò, Michalis Matri, Amanda Tracz, John M.L. Ebos, Sébastien Benzekry. Mathematical modeling of differential effects of neo-adjuvant Sunitinib on primary tumor and metastatic growth. AACR Annual Meeting 2018, Apr 2018, Chicago, United States. 78 (13 Supplement), pp.4264, 2018, <10.1158/1538-7445.AM2018-4264>. <hal-01968917>

HAL Id: hal-01968917

<https://inria.hal.science/hal-01968917v1>

Submitted on 8 Jan 2019

HAL is a multi-disciplinary open access archive for the deposit and dissemination of scientific research documents, whether they are published or not. The documents may come from teaching and research institutions in France or abroad, or from public or private research centers.

L'archive ouverte pluridisciplinaire HAL, est destinée au dépôt et à la diffusion de documents scientifiques de niveau recherche, publiés ou non, émanant des établissements d'enseignement et de recherche français ou étrangers, des laboratoires publics ou privés.



HAL Authorization

Mathematical modeling of differential effects of neo-adjuvant Sunitinib on primary tumor and metastatic growth

C. Nicolò¹, M. Matri², A. Tracz², J. ML Ebos², S. Benzekry¹

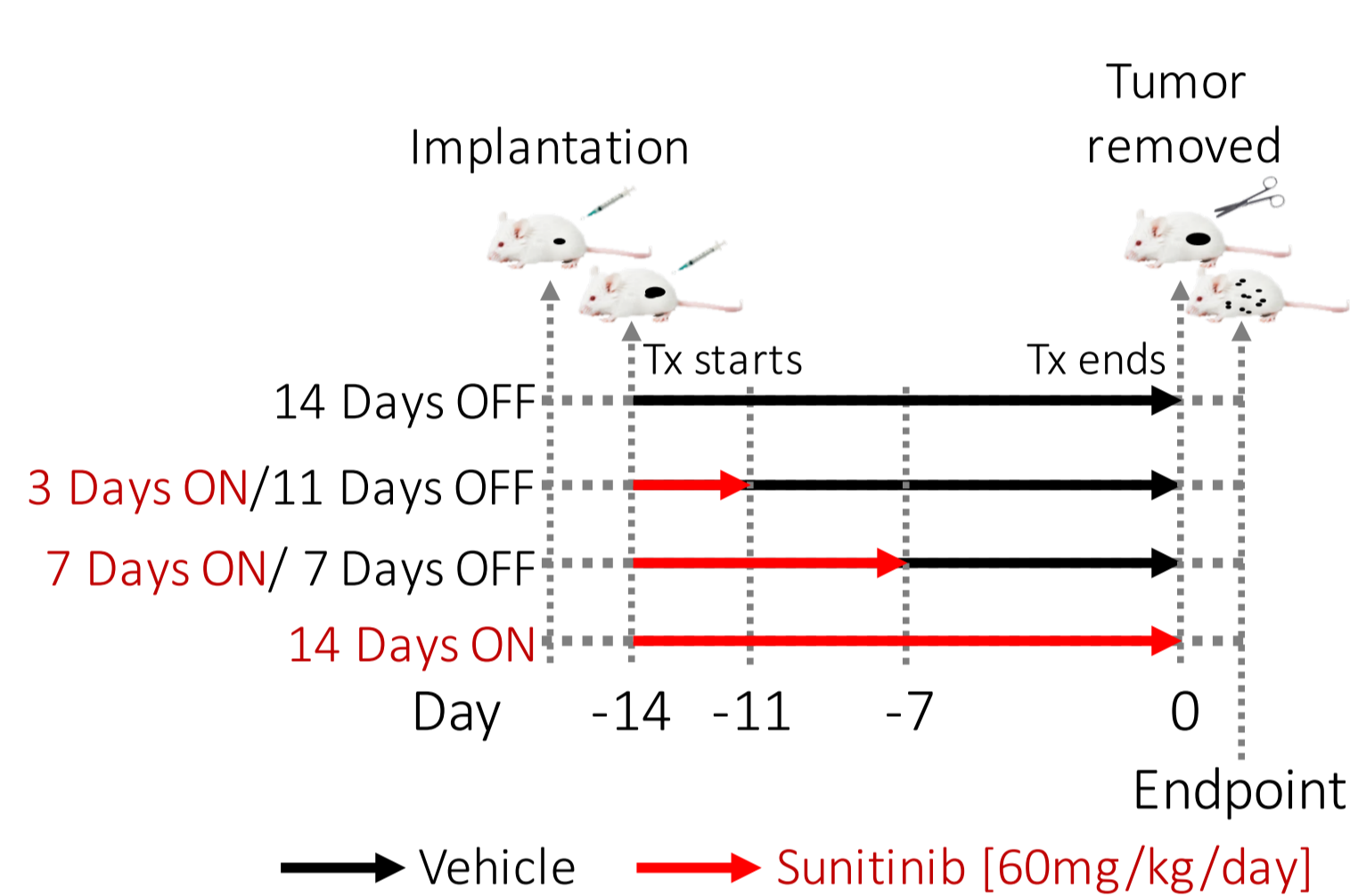
¹Inria team MONC, Institut de Mathématiques de Bordeaux, Bordeaux, France.

²Department of Cancer Genetics and Medicine, Roswell Park Cancer Institute, Buffalo, New York.

BACKGROUND

- **Sunitinib** is a drug with anti-angiogenic activity used in the treatment of patients with metastases from renal cell carcinoma or gastrointestinal tumors.
- It is currently evaluated in clinical trials in the neo-adjuvant setting.
- Despite clear efficacy in reducing established tumor growth, recent preclinical studies have shown **limited**, or even opposing, **efficacies in preventing metastatic spread**.
- In this work, we evaluated a **mathematical model of the metastatic process** to describe primary tumor and metastatic dynamics in response to sunitinib in a clinically relevant **ortho-surgical mouse model of spontaneous metastatic breast cancer**.

EXPERIMENTAL DATA

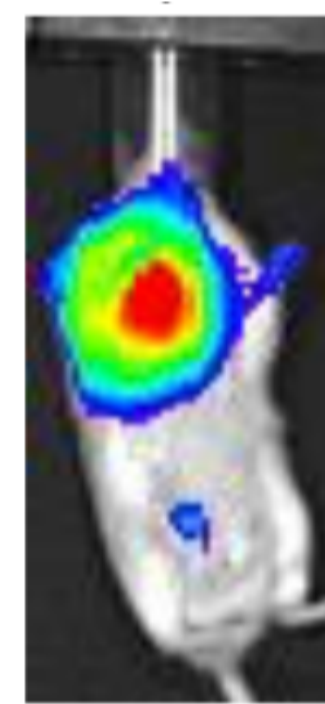


Measurements of

- primary tumor kinetics,
- metastatic burden (bioluminescence)
- pre-surgical molecular and cellular biomarkers, including Ki67 and CD31 expression, circulating tumor cells (CTCs) and myeloid derived suppressor cells (MDSCs).

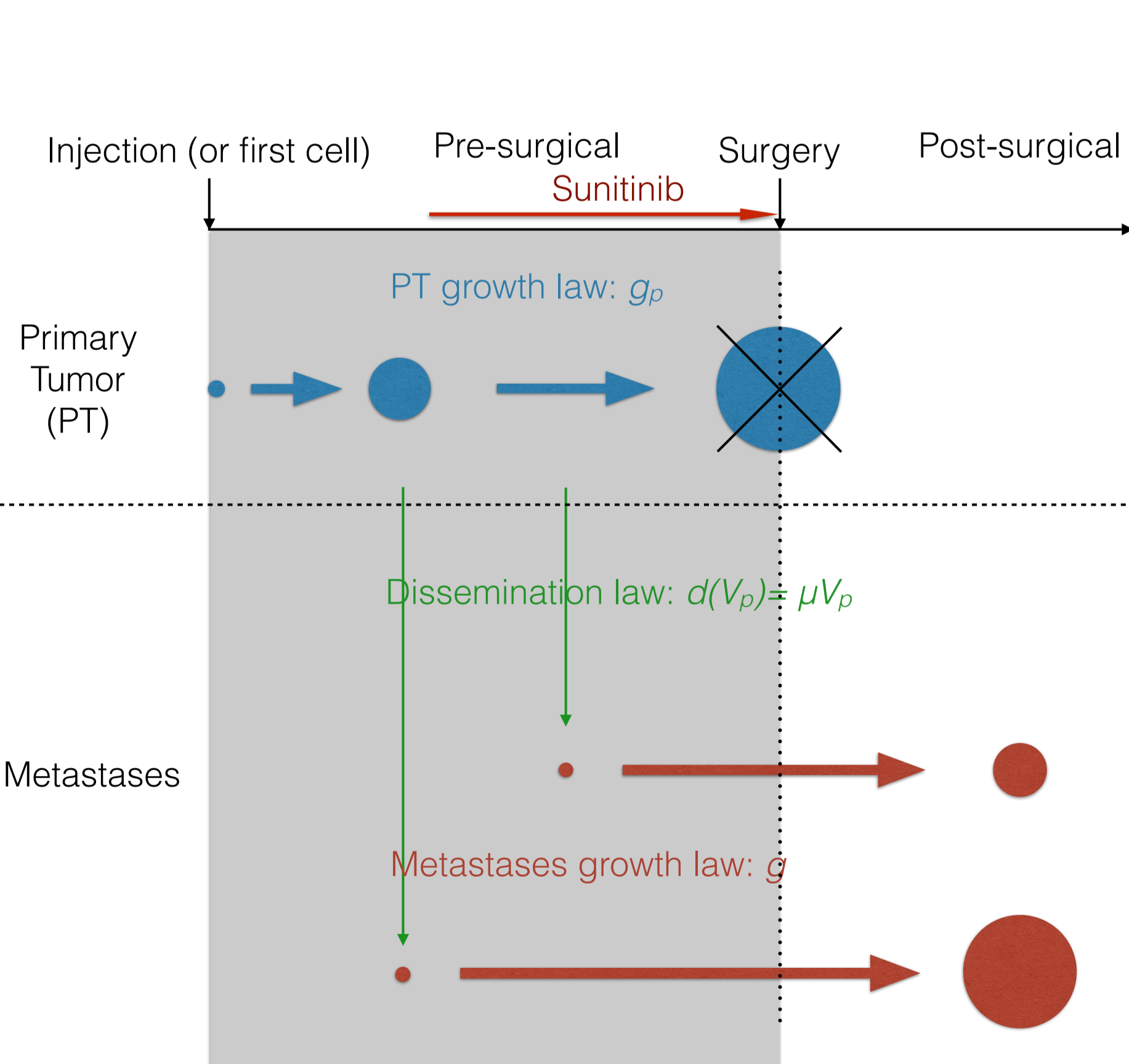
Orthotopic xenograft breast model:
LM2-4^{LUC+} human metastatic breast carcinoma cells.

Bioluminescence monitoring of post-surgical metastasis



Day 15

AN ELEMENTARY THEORY OF METASTATIC DYNAMICS: DISSEMINATION + GROWTH



Growth rates of primary and secondary tumors g_p and g

$$\frac{dV_p}{dt} = g_p(V_p(t), t)$$

Dissemination rate $d(V_p) = \mu V_p$

Size distribution of the metastases $\rho(t, v)$

$$\begin{cases} \partial_t \rho(t, v) + \partial_v (g(v) \rho(t, v)) = 0 \\ g(V_0) \rho(t, V_0) = d(V_p(t)) \\ \rho(0, v) = \rho^0 \end{cases}$$

Metastatic burden (total metastatic number of cells)

$$M(t) = \int_0^t d(V_p(t-s)) V(s) ds$$

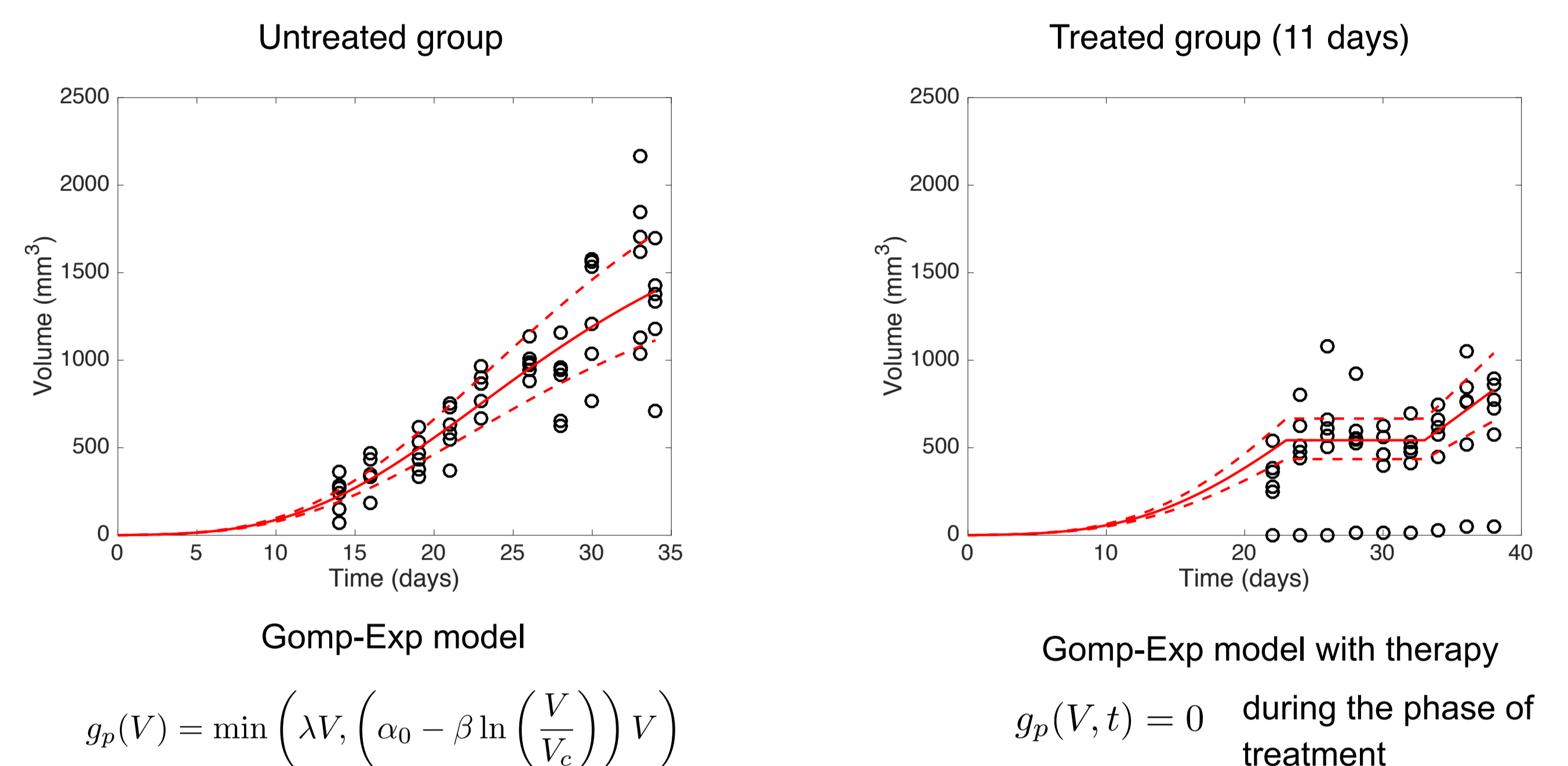
REFERENCES

[1] Ebos, J. M. L., Matri, M., Lee, C. R., Tracz, A., Hudson, J. M., Attwood, K., Cruz-Munoz, W. R., Jedeszko, C., Burns, P., and Kerbel, R. S. (2014). Neoadjuvant antiangiogenic therapy reveals contrasts in primary and metastatic tumor efficacy. *EMBO Mol Med*, 6(12):1561–1576

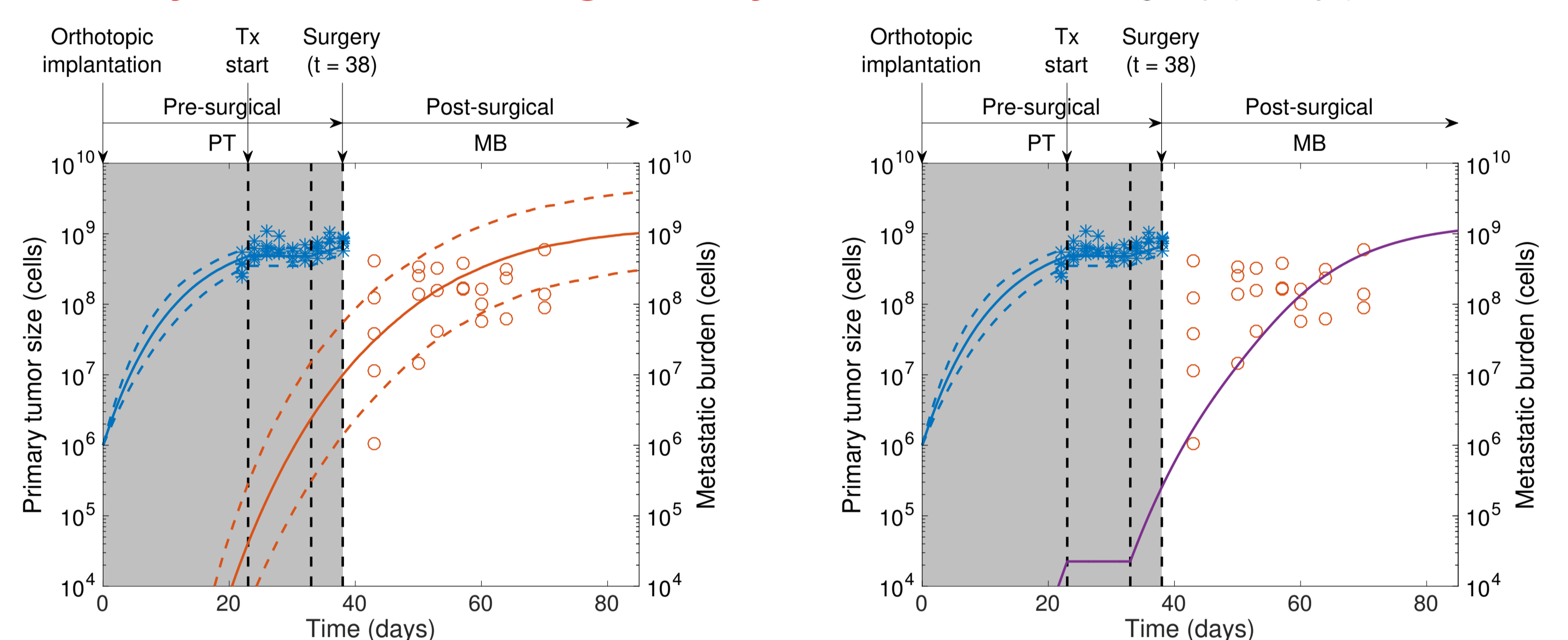
[2] Benzekry, S., Tracz, A., Matri, M., Corbelli, R., Barbolosi, D., and Ebos, J. M. L. (2016). Modeling spontaneous metastasis following surgery: an in vivo-in silico approach. *Cancer Res*, 76(3):535–547.

DIFFERENTIAL EFFECTS OF SUNITINIB ON PRIMARY TUMOR AND METASTASIS

Primary tumor growth:



Primary tumor - metastatic growth dynamics:



Population fit assuming **no effect of treatment on metastasis**

Simulation of **treatment also on metastasis**

Treatment acts differently on primary and secondary tumor growth

Mixed-effects population approach.

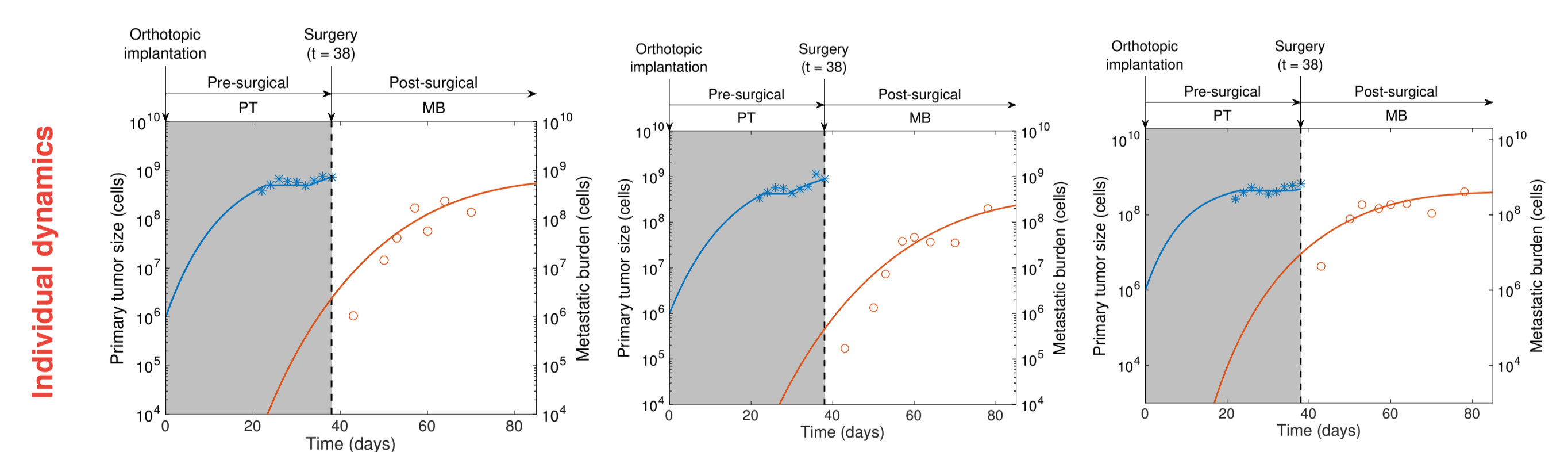
Log-normal distribution for the individual parameters:

$$\log(\psi_i) \sim \log(\psi_{pop}) + \eta_i, \quad \eta_i \sim \mathcal{N}(0, \omega^2)$$

MLE of ψ_{pop} through the SAEM algorithm.

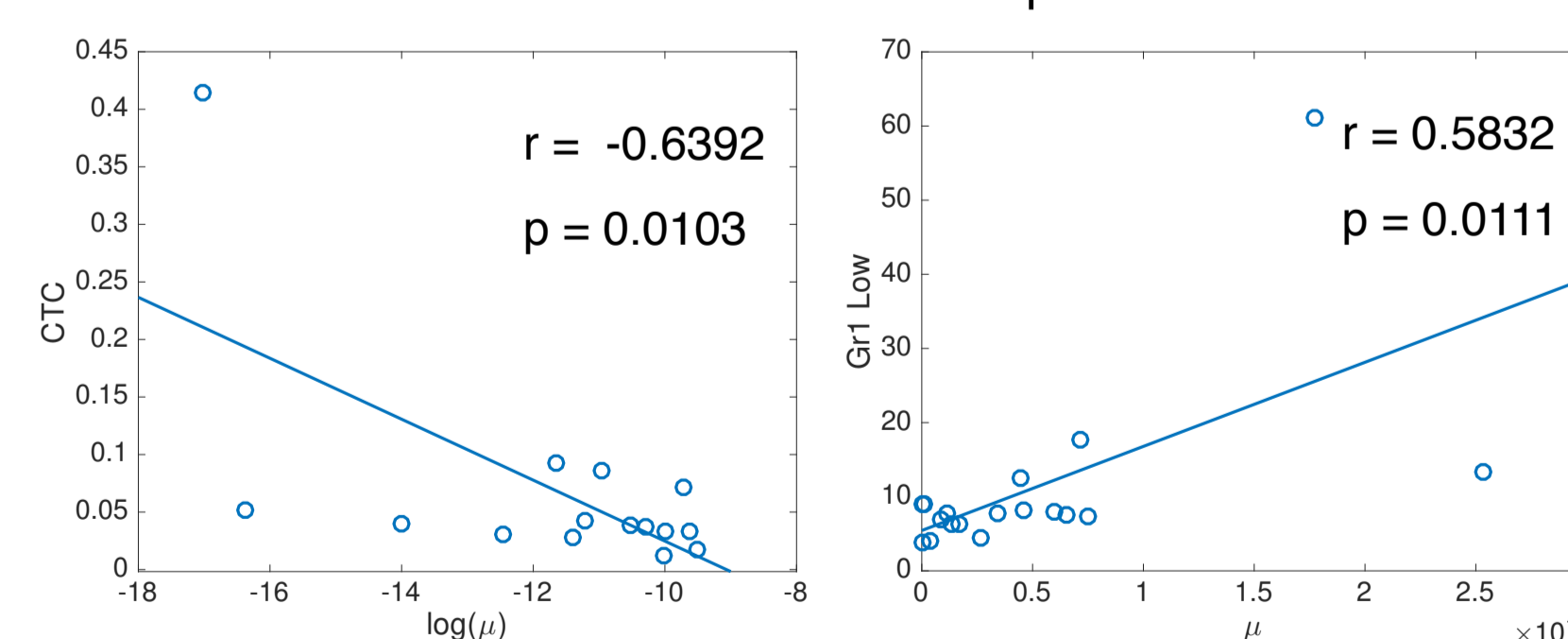
Table: Population parameters for the treated group.

	estimate (CV %)	unit	r.s.e. (%)
μ_{pop}	1.009e-04 (117.476)	mm ⁻³ · day ⁻¹	23.483
$\alpha_{0, pop}$	1.907 (22.919)	day ⁻¹	6.208
β_{pop}	9.116e-02 (24.490)	day ⁻¹	6.682



COVARIATES ANALYSIS

Biomarkers VS individual parameters



- Biomarkers can be included in the model as covariates in order to explain part of the variability in the individual parameters

$$x_i : \text{individual covariate} \longrightarrow \log(\mu_i) = \log(\mu_{pop}) + \beta x_i + \eta_i, \quad \eta_i \sim \mathcal{N}(0, \omega^2)$$

CONCLUSIONS

These results confirm a differential effect of sunitinib on primary (localized) tumors compared to secondary (metastatic) disease. Our results suggest that **Ki67+/CD31+, CTCs and MDSCs** measurements **might help in personalized prediction of metastatic potential** and thus aid in predicting benefit in overall **survival** for preoperative antiangiogenic treatments.