



HAL
open science

Calipso: Physics-based Image and Video Editing through CAD Model Proxies

Nazim Haouchine, Frédéric Roy, Hadrien Courtecuisse, Matthias Niessner,
Stéphane Cotin

► **To cite this version:**

Nazim Haouchine, Frédéric Roy, Hadrien Courtecuisse, Matthias Niessner, Stéphane Cotin. Calipso: Physics-based Image and Video Editing through CAD Model Proxies. *The Visual Computer*, 2018, 36, pp.211-226. 10.1007/s00371-018-1600-0 . hal-01890684v2

HAL Id: hal-01890684

<https://inria.hal.science/hal-01890684v2>

Submitted on 9 Nov 2018

HAL is a multi-disciplinary open access archive for the deposit and dissemination of scientific research documents, whether they are published or not. The documents may come from teaching and research institutions in France or abroad, or from public or private research centers.

L'archive ouverte pluridisciplinaire **HAL**, est destinée au dépôt et à la diffusion de documents scientifiques de niveau recherche, publiés ou non, émanant des établissements d'enseignement et de recherche français ou étrangers, des laboratoires publics ou privés.

Calipso: Physics-based Image and Video Editing through CAD Model Proxies

Nazim Haouchine · Frederick Roy · Hadrien Courtecuisse · Matthias Nießner ·
Stephane Cotin

Accepted for publication: September 30, 2018

Abstract We present Calipso, an interactive method for editing images and videos in a physically-coherent manner. Our main idea is to realize physics-based manipulations by running a full physics simulation on proxy geometries given by non-rigidly aligned CAD models. Running these simulations allows us to apply new, unseen forces to move or deform selected objects, change physical parameters such as mass or elasticity, or even add entire new objects that interact with the rest of the underlying scene. In our method the user makes edits directly in 3D; these edits are processed by the simulation and then transferred to the target 2D content using shape-to-image correspondences in a photo-realistic rendering process. To align the CAD models, we introduce an efficient CAD-to-image alignment procedure that jointly minimizes for rigid and non-rigid alignment while preserving the high-level structure of the input shape. Moreover, the user can choose to exploit image flow to estimate scene motion, producing coherent physical behavior with ambient dynamics. We demonstrate physics-based editing on a wide range of examples producing myriad physical behavior while preserving geometric and visual consistency.

Keywords video and image manipulations · interactive editing · physics-based modeling · scene dynamics

1 Introduction

Image and video editing is a core research problem with a long history in computer graphics and vision, impacting a

Nazim Haouchine, Frederick Roy, Stephane Cotin
Inria

Hadrien Courtecuisse
University of Strasbourg and CNRS

Matthias Nießner
Stanford University and Technical University of Munich

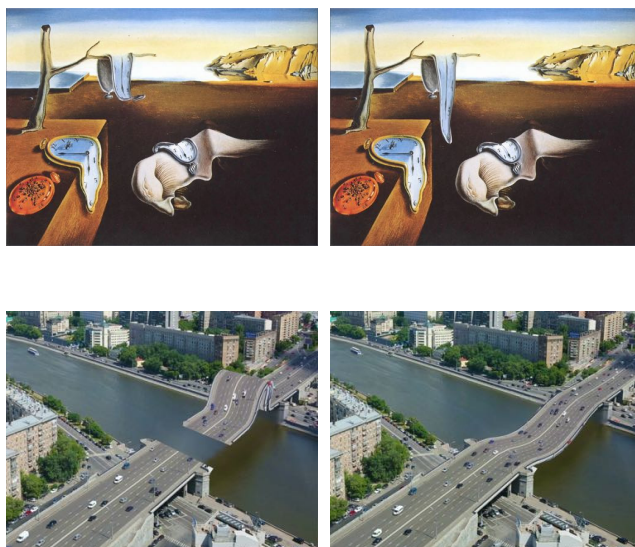


Fig. 1: Our method allows a user to interact in a 3D manner with objects in images and videos by producing rigid and deformable transforms, topological changes and physical attribute editing (e.g., mass, stiffness, gravity). Using an intuitive mesh refinement and 3D/2D alignment approach and estimating dynamics from image flow, our system produces a final composition without cumbersome user input, while preserving visual consistency. Top: editing Dali's painting by interactively pulling the watch or decreasing its stiffness leading to melting it. Bottom (video): bending a car bridge by pulling it from a side or by progressively increasing its mass.

wide range of applications such as movie production post-processing, life-style magazine content polishing, and many more. Along with impressive research advances, commercial tools (e.g., Adobe Photoshop) have been developed that put theory into practice, and have made many sophisticated editing algorithms popular and available to the masses. Early edit operations were fairly low-level, and involved significant effort to achieve desired results while relying on skilled users in order to ensure seamless edits. The key towards an easier editing pipeline is finding the right abstraction, allowing edit manipulations to become more high level tasks. Seam Carving [2] for content-aware resizing or PatchMatch [5] for content-aware filling are just a few of many great achievements in this context.

Despite significant progress towards making 2D content manipulation easier and accessible, it is still challenging for novice users to achieve high-quality editing results in many situations. One of the main reasons is that images and videos are only given as a 2D projection of a 3D environment, where the information of the underlying 3D scenes – including geometry, material, and lighting – is not fully reflected. It becomes even more challenging to apply edits in a *physically-consistent* manner. For instance, adding new objects that interact with the rest of the scene, or simply increasing the mass or changing the elasticity of an object, is inherently difficult to achieve in a purely image-based domain.

In this work, we address these challenges by introducing Calipso, a real-time editing tool focused specifically on physics-based modifications of images and videos. The core idea is to first abstract the target content with a 3D representation. This abstraction serves the user as an interaction proxy, and is used to enforce physics consistency. Thus, edits can be directly applied in 3D, and we can simulate a desired physics behavior. Our approach then transfers the outcome to the underlying 2D content through shape-to-image correspondences in a photo-realistic rendering process to generate the modified result.

In order to obtain the 3D geometry for an object of interest, we introduce a novel model fitting interface that allows, a selected shape from a model database, to be aligned on an image. The user only needs to place a CAD model roughly on top of the target area and provide a sketch of the silhouette of the object of interest. Based on this input, we formulate an energy minimization problem that jointly aligns and deforms the CAD model such that the target projections match while preserving the global 3D structure of the input shape, even if the CAD model’s original shape is changed significantly.

With this 3D abstraction, we introduce *physics-based* editing by running a full physics simulation using the obtained geometric CAD model proxy. Our technique provides an interface where edits can easily be realized. This new paradigm of physics-based editing not only facilitates non-

rigid edits and changes in an object’s appearance according to an interactive finite element simulation, but also supports manipulations in physical behavior; for example, mass, velocity, or other physics parameters of an object can easily be adjusted to achieve different visual effects in the output video.

Calipso makes it easy to realize these edits with *interactive* feedback with little manual intervention, and is based on two main contributions:

- We realize physics-based image and video editing through CAD model proxy supported by a finite element simulation, allowing for a wide range of manipulations, including rigid transforms, geometry and topological changes, elastic deformations, collision, and physical parameter updates such as mass, stiffness, compressibility or gravity.
- We introduce an efficient CAD-to-image alignment procedure that jointly minimizes for rigid and non-rigid model alignment while preserving the physical consistency of the input shape.

2 Related Works

Traditional Image Editing Image editing methods have a long history in the research community; here, we will review the most relevant works to our approach. Much of this research is inspired by commercial tools. A prime example is Adobe Photoshop, which allows a user to perform a large variety of both low- and high-level image editing operations in an interactive UI. Many state-of-the-art image editing approaches have been integrated into Photoshop, such as content-aware filling using the PatchMatch inpainting method [5] or Seam Carving for content-aware resizing [2]. However, there are many other powerful approaches to facilitate image manipulation. One direction is to incorporate semantics, and perform operations on 2D objects rather than on the per-pixel level in order to support scaling, stretching, bending, etc. [6]. Another direction is editing the appearance of objects in an image. For instance, Fang et al. [21] combine texture synthesis and shape-from-shading to modify the textures of existing objects, and Khan et al. [27] alter the material properties of objects, adding transparency, translucency and gloss based on insights from human perception.

Oh et al. [35] enable image-based modeling and photo editing by assigning depth layers to perform viewpoint changes in a photograph. This idea is further extended by Chen et al. [11] to work on videos.

Another possibility is to incorporate content from images from the web, allowing insertion of new objects into selected regions [23]. Chen et al. [12] propose Sketch2Photo,

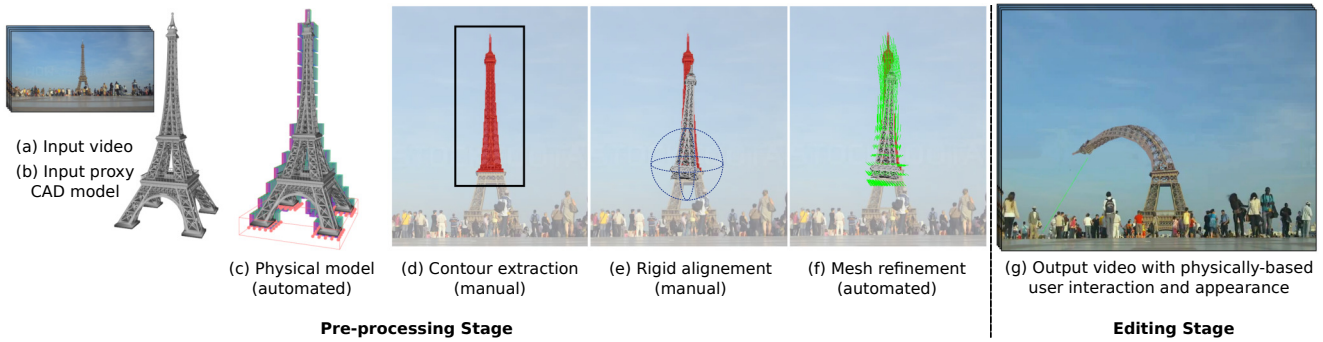


Fig. 2: Problem setup and overview: an input video Q (a) and a proxy CAD model S (b) are expanded using a deformable model built on the fly (c). The user manually defines the object contour through an intuitive graph-based foreground extraction (d), and roughly aligns the CAD model on the image (e) to obtain the camera/object position. Our method automatically refines the mesh and aligns it non-rigidly with the image by computing $\mathcal{T}(S)$ through an energy minimization process (f). Finally, the user can interact with the targeted object (g) by manipulating its geometry and by editing its local and global physical properties gathered in the set ϕ and the function \mathbf{F} . The resulting composite video Q^* maintains visual fidelity \mathcal{A} using image-based inverse rendering.

which composes multiple photos based on user-provided sketches whose shape have all required properties, including camera pose, lighting, resolution, etc.. The placement of the inserted objects is 3D; however, the source objects are from the LabelMe dataset [38] where ground truth object segmentations are provided. Objects can also be inserted into an existing photograph by rendering a synthetic CAD model on top of the image with subsequent compositing [19]. Teramoto et al. [43] presented an interactive method to produce motion photograph from a single images to enable users insert motion effects without damaging the original image. Their approach is based on a transfer model that creates motion effect from user-defined parameters (speed, direction, depth...). In order to facilitate compositing and generate realistic results, the scene’s illumination must be captured. For this puprose, Debevec et al. [19] utilize a mirrored sphere. A similar idea can be applied in order to insert synthetic objects into legacy photographs. Karsch et al. [26] first annotate the geometry and lighting, and then render 3D objects into the scene and run a final compositing step. In [10] authors proposed an editing tool for mixing several raw footages. This tool permits to insctirstate objects from an input video to another while ensuring spatio-temporal consistency usin sparse structure points.

which composes multiple photos based on user-provided sketches whose shape have all required properties, including camera pose, lighting, resolution, etc..

These methods achieve impressive results, and have received wide attention; however, their fundamental limitation is the inherent lack of understanding of underlying 3D geometry, which makes the incorporation of physics-based edits challenging.

Image Editing with Domain Knowledge Editing images can be supported by leveraging domain knowledge in order to constrain a parameter space that forces results to stay within realistic bounds. For instance, Debevec et al. [20] model and render architectures from photographs. They use regular symmetric structures of architectural models to reveal novel views of buildings. Another important domain is human faces: Blanz and Vetter [8] build a low-dimensional parametric face model that allows the synthesis of 3D faces. Face2Face [44,45] extends this by allowing photorealistic edits of facial expressions in videos in real time. Human shapes is another domain, addressed by [25] and [48] which enables quick and easy manipulation of human bodies in 2D content based on an underlying 3D morphable model. Bai et al. [3] focus on temporal edits by selectively de-animating videos. Their core idea is to compute a warp field constraint by a set of manually-provided strokes that removes the large-scale motion in these regions while leaving finer-scale, relative motions intact. SMASH [33] uses law of rigid bodies to reconstruct collisions between objects in video. The reconstructed scene can then be manipulated to tune the physical parameters and generates new types of realistic collisions.

Object-centric Image Manipulation The most related line of work to ours is the object-centric manipulation of images. Photo Clip Art [30] inserts objects from a clip art database

into existing photographs. Their approach is based on a transfer model that creates motion effect from user-defined parameters (speed, direction, depth...). In order to facilitate compositing and generate realistic results, the scene’s illumination must be captured. For this puprose, Debevec et al. [19] utilize a mirrored sphere. A similar idea can be applied in order to insert synthetic objects into legacy photographs. Karsch et al. [26] first annotate the geometry and lighting, and then render 3D objects into the scene and run a final compositing step. In [10] authors proposed an editing tool for mixing several raw footages. This tool permits to insctirstate objects from an input video to another while ensuring spatio-temporal consistency usin sparse structure points.

These methods produce impressive results; however, they focus on inserting new content into images rather than modifying the appearance of existing objects.

Zheng et al. [47] addresses the task of editing objects in a scene by cuboid proxies. First, they compute an image composition and abstract scene objects with models of 3D cubes. Their edits focus on the scene level and allow for a variety of editing tasks; e.g., replace all furniture in a living room with different models and embed them (naturally) in the image. Chen et al. [13] follow up on this direction with an impressive editing framework. They propose 3-

sweep, an interactive editing tool, which facilitates the extrusion of coarse 3D shapes from images with only three sweep strokes, each defining a dimension. Once a 3D object is extracted, it can be quickly edited and placed into photos of 3D scans. This facilitates a large variety of powerful editing operations; however, in contrast to our work, 3-sweep’s focus is on rigid transformations of extracted objects and associated parts. Although not dedicated to image editing, Shao et al. [40] proposed a method to reveal hidden parts during 3D acquisition. This method recovers missing and occluded data by abstracting the 3D scene using cuboids. Instead of extruding the 3D geometry directly from the image, Kholgade et al. [28] utilize 3D CAD models from a shape database as a prior. They manually retrieve and align 3D models to an image, and estimate illumination and texture of the aligned model. The CAD model then serves as an interaction proxy to facilitate image edits by transferring modifications of the 3D shape proxy to the image. While they mostly focus on image examples with rigid object edits, their method also allows for non-rigid object deformation with an as-rigid-as-possible editing constraint [41]. Recently, authors in [36] proposed a method for creating water fluid animation in a single photography using a database of videos. The user can interactively select a direction, flow speed and animation while the algorithm applies a texture synthesis to render the water scene. Our method uses a similar pipeline; however, our goal is to enable physics-based editing of image and video content by connecting 3D CAD model proxies with a faithful physics simulation. This not only allows us to perform interactive edits constrained by a true physics simulation, but also modify the simulation results and image/video appearance by changing the underlying physics parameters; e.g., mass, material, elasticity, etc.. In addition, we propose a non-rigid alignment framework based on silhouette constraints compared to the alignment tool by Kholgade et al. that requires heavy user interaction to specify all constraints in a tedious manual procedure. Bazin et al. [7] also argue for a physics simulation to edit videos. Their main idea for the physics simulation is to discourage object parts with no texture information from becoming visible. In contrast to our method, their 3D proxies are essentially modeled around the input video, limiting the complexity of their results. Davis et al. [18] extract an image-space representation of object structure from video, and use it to synthesize physically plausible animations. Their approach facilitates edits based on unseen physical forces without knowledge of the scene geometry or material properties.

3 Problem Setup and Overview

Our system aims at enabling physics-based user-edits on videos or images using a 3D CAD model proxy (available in various internet databases). As shown in the pipeline of

Figure 2, our system is separated onto two stages, a pre-processing stage and an editing stage. In the pre-processing stage a physical model is automatically built upon the input CAD model. This physical model is used for both the CAD-to-model alignment and the editing stage. The user then defines the 2D object’s contour, in order to be used to automatically align the model in the image while simultaneously refining the 3D mesh geometry. Once aligned, and object’s mesh is refined, the appearance is estimated to enable consistent rendering. The user can now edit the video in 3D using various types of manipulations, while relying on the object’s intrinsic and extrinsic physical characteristics and scene dynamics and maintaining a geometrically and visually consistent scene. In order to establish such a system, several assumptions (discussed in section 10) have been taken:

- the availability of a 3D CAD model proxy (a clean triangular mesh with Lambertian surface)
- a non-moving camera during the sequence (a moving camera would imply estimating camera pose at each frame)
- a unique, principale light source (although several sources are most of the time present, they will be considered as one)
- a constant background during the edits (since background filling is only computed once)

Our method can support the manipulation of several objects in the same scene, as shown in section 9, nevertheless, for sake of clarity, we will only consider a sole object per scene in the problem formulation.

Formally speaking, let $Q = \{I_t, I_{t+1} \dots, I_{t+k}\}$ be an image sequence, where I is an image of size $w \times h$ and t the time. And let S be a 3D non-textured surface mesh composed of vertices, faces and normals that semantically correspond to an object in the sequence Q . We seek to produce a new image sequence $Q^* = \{I_t^*, I_{t+1}^* \dots, I_{t+k}^*\}$, which enables the user to manipulate desired objects by editing their geometrical and physical behavior. The sequence Q^* can be determined through the editing function Γ :

$$Q^* = \Gamma(Q, S, \mathbf{P}) \quad (1)$$

where \mathbf{P} is the camera projection matrix relating the 3D model in world coordinates to its 2D projection in pixel coordinates. The camera is defined by the user during the initial alignment and assumed to be fixed during the sequence.

In practice, the 3D model geometry S obtained through proxy does not fit the targeted object in the sequence. Thus, we define a transform function \mathcal{T} that automatically updates the 3D model shape using its projected contour on the image. The contour is user-defined and enables inpainting the sequence Q_p , revealing new parts. We obtain a new model $\mathcal{T}(S) = S^*$ that faithfully matches the object in the image.

In addition to the transform function, we consider an appearance function \mathcal{A} that estimates object appearance in terms of texture and illumination to produce a seamless final composite sequence Q^* . This amounts to estimating illumination and diffuse reflectance by minimizing a similarity function between the original image and the rendered one such that $\mathcal{A}(S^*, Q_p) = Q$.

Finally, we manually define a set of physical parameters which govern the scene dynamics, such as gravity (user defined), friction or external pressure. These quantities are gathered by the function \mathcal{F} , and can be set and edited by the user, as well as estimated from the video. In fact, when editing videos, it can be very difficult and time consuming to maintain visual consistency while simultaneously change an object’s behavior. By exploiting video dynamics to extract velocity, acceleration, and moment of collisions, we can significantly improve this consistency. We define the set ϕ as the set of the object physical properties (e.g., mass, damping, stiffness), which are set by the user and can be modified interactively.

Overall, we can rewrite the editing function Γ as

$$Q^* = \Gamma(\mathcal{A}(S^*, Q_p), S_{\{\mathcal{F}, \phi\}}, \mathbf{P}) \quad (2)$$

Our method involves determining Q^* efficiently without cumbersome user input to allow interactive physics-based editing of an input video sequence Q . We exploit the physical model introduced in Section 4 to correct the initial geometry while satisfying both physical and projective camera constraints. This permits simultaneously computing the new model S^* and alignment on the image. This process is described in Section 5. Once S^* is computed and aligned, the appearance \mathcal{A} is estimated through a similarity-based optimization process (see Section 6). The user can finally interact with the sequence by editing its physics, geometry, and position in space and time, while relying on physical cues extracted from the videos, such as motion velocity and instant of collision (describe in Section 7).

4 Physics-based Model

The literature related to physical models is vast and crosses many scientific domains such as engineering, computational mechanics and computer graphics [34]. While dedicated models such as thin-plate splines [9], free-form [15], or as-rigid-as-possible [41] have proved their relevance and efficiency for user-guided model-to-image fitting and isometric deformations, we intend to have a more generic model. In our method, physical models are used in three ways:

1. to facilitate the model-to-image alignment, where the input 3D surface does not correspond to the object in the sequence and mandates deforming its geometry,

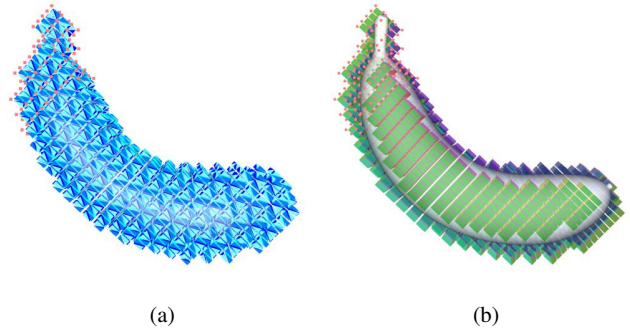


Fig. 3: FEM volume, boundary conditions, and mapping: the volumetric mesh V is built upon the surface model S following several representations: (a) a grid tetrahedron volume model and (b) an grid hexahedron volume model. The red spheres represent the boundary constraints.

2. to interactively manipulate objects in a 3D manner including stretching, torsion, compression.
3. to update physical attributes whether intrinsic (related to the object, such as stiffness, mass, and damping), or extrinsic (related to the scene, such as gravity, motion dynamics, and surrounding forces).

In order to satisfy the three above-mentioned needs, we rely on a physically-based model that permits an automatic geometry correction, an interactive user interaction and physical properties update. Several characteristics are sought for our deformable model: a low computational cost while maintaining reasonable accuracy, the ability to handle large deformations, and a low-dimensional parameterization. For this purpose, a Saint-Venant Kirchoff material appears to be a relevant strategy: the model is non-linear, thus allowing handling of geometric non-linearities (torsion, compression, elastic deformation); it can be quickly computed following the work of Kikuuwe *et. al.* [29]; and it relies on few material parameters, Young’s modulus E as a measure of the stiffness of the material and Poisson’s ratio ν as an estimate of its compressibility. E and ν can be tuned to respectively increase or decrease the locality of the deformations and control the volume preservation, while enforcing the consistency of the geometry (even for large deformations).

4.1 Discretization with Finite Element Method

Without loss of generality, we use the Finite Element Method (FEM) to discretize partial differential equations of solid continuum mechanics. This discretization is computed on a volumetric mesh V with a finite number of degrees of freedom (element’s nodes). This volume representation V is built on-the-fly from a voxelization of the input 3D model

S (cf. Figure 3 (a) and (b)). The deformable object is represented as a volumetric mesh composed of a sparse grid of tetrahedral or hexahedral elements. The number of elements are to be chosen adequately (by the user) in order to ensure interactive performance as well as sufficient accuracy.

A particular object deformation is specified by the displacements of nodal positions and the nodal forces. In general, the relationship between nodal forces and nodal positions is non-linear. When linearized [16], the relationship for an element e connecting n_e nodes can simply be expressed as

$$\mathbf{f}_e = \mathbf{K}_e \delta \mathbf{u}_e \quad (3)$$

where $\mathbf{f}_e \in \mathbb{R}^{3n_e}$ contains the n_e nodal forces and $\delta \mathbf{u}_e \in \mathbb{R}^{3n_e}$ the n_e nodal displacements of an element. The matrix $\mathbf{K}_e \in \mathbb{R}^{3n_e \times 3n_e}$ is called the stiffness matrix of the element. Because forces coming from adjacent elements add up at a node, a stiffness matrix $\mathbf{K} \in \mathbb{R}^{3n \times 3n}$ for an entire mesh with n nodes can be formed by assembling the element's stiffness matrices \mathbf{K}_e . The equation of deformation of an object will therefore take the general form:

$$\mathbf{K} \delta \mathbf{u} = \mathbf{f} \quad (4)$$

where \mathbf{f} are external forces and $\delta \mathbf{u}$ represent displacements of nodal positions of the whole volume V . The computation of the stiffness matrix \mathbf{K} is nonlinear due to the non-linearity of Green-Lagrange strain tensor and is built depending on the material properties, Young's modulus and Poisson's ratio.

4.2 Mapping and Force Propagation

We distinguish in the paper the physical model and the visual model. The volumetric mesh V is composed of n nodes $\mathbf{u} \in \mathbb{R}^{3n}$, representing the mechanical model whereas S , the surface mesh is composed of b vertices $\mathbf{s} \in \mathbb{R}^{3b}$ (with generally $n < b$) and represents the visual model. Both models are linked with a bi-directional mapping (cf. Figure 3 (c)).

Let \mathbf{J} be the Jacobian matrix used to map the nodes positions \mathbf{u} of the volume model to the vertices positions \mathbf{s} of the surface model. The positions can be mapped following $\mathbf{x}_u = \mathbf{J} \mathbf{x}_s$ while the velocities are mapped as: $\mathbf{v}_u = \mathbf{J} \mathbf{v}_s$. The matrix \mathbf{J} contains barycentric coordinates of the degrees of freedom of surface w.r.t to the corresponding volume, which we assume remains valid during the deformation.

The stress/strain relation related to the physical model implies that each displacement generates forces. The propagation of the positions and velocities are from the surface to the volume. The forces are propagated conversely, from the volume to the surface. Given forces \mathbf{f}_u applied to the volume model, the mapping computes and accumulates the equivalent forces \mathbf{f}_s applied to its surface. Since equivalent forces

must have the same power, the following relation holds: $\mathbf{v}_s^T \mathbf{f}_s = \mathbf{v}_u^T \mathbf{f}_u$. Given \mathbf{J} and using the virtual work principle, the previous relation can finally be expressed as $\mathbf{f}_s = \mathbf{J}^T \mathbf{f}_u$.

It is important to recall that only a part of the volume deforms during the alignment, since the contours are 2D projections; the deformation is thereby driven by loads acting solely on its surface (aside from gravity). The mapping relations permit propagating this deformation to the rest of the model, out-of-plane, where we can ensure a consistent final mesh S^* .

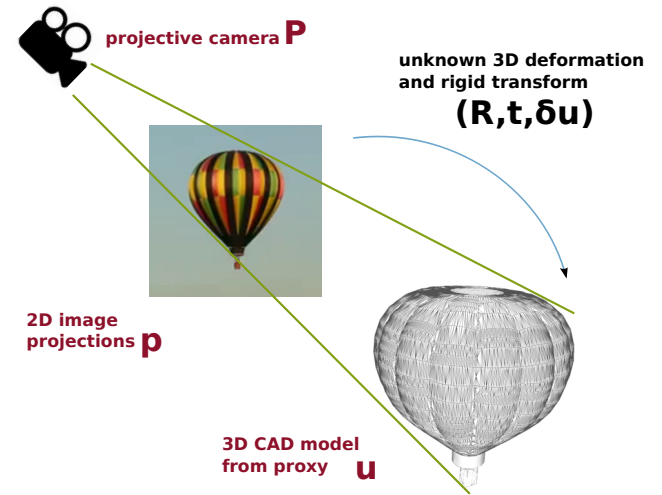


Fig. 4: Model-to-image alignment: we seek to find the rotation \mathbf{R} , the translation \mathbf{t} , and the deformation $\delta \mathbf{u}$ between the 2D image projections and the 3D model, with respect to the projection camera \mathbf{P} . Finding this transformation will simultaneously result in a refined 3D model S^* and a coherent model-to-image alignment through an automated process.

5 Model-to-image Alignment

In order to align the 3D model S on the image I , one must first compute the transformation \mathcal{T} , that encodes both rigid and non-rigid transformations, so that $\mathcal{T}(S) = S^*$. Once computed, the new deformed model S^* can be projected on each image composing the sequence following the projection matrix \mathbf{P} . Since no 3D information about the shape of our targeted object is provided, we rely only on 2D projections to both correct object geometry and align it on the image. More precisely, if we denote $\mathbf{p} = \{p_i \in \mathbb{R}^2\}, i \in \{1 \dots m\}$ the positions of these 2D projections, the transformation \mathcal{T} can be written as:

$$\mathbf{P} \cdot \mathcal{T}^{\mathbf{R}, \mathbf{t}, \delta \mathbf{u}}(\mathbf{u}) = \mathbf{p} \quad (5)$$

where \mathbf{R} and \mathbf{t} are respectively the 3×3 rotation matrix and 3×1 translation vector that represent the rigid transforma-

tion, and $\delta \mathbf{u}$ is the $3n$ vector of nodal displacements which encodes the deformations of the physical model V . This formulation is illustrated in Figure 4.

Finding \mathcal{T} is a non-trivial task, since several 3D shapes can lead to the same 2D projection. In a purely rigid scenario, this process is known as a *perspective-n-point* problem [31] and can be solved efficiently given a set of correspondences between 3D points and their 2D projections. In our case, the problem is more complex since dealing with deformable objects leads to a higher number of degrees of freedom. To this end, we express the problem as an energy minimization problem where the solution is the equilibrium between the internal forces of the physical model \mathbf{u} and the external forces resulting from the projection \mathbf{p} of the object on the image, while satisfying the projection constraints of the camera \mathbf{P} .

Object contours as physical penalties We propose to consider the contours of the object as external penalties that will constrain the mechanical model to fit its projection of the image. The contour is extracted using the well-known graph-based foreground extraction algorithm, grabcut [37]. By allowing the user to define the inner and outer parts of the object, a segmentation is computed. We obtain from this segmentation object’s contour. This contour is smoothed over a Gaussian function, following a moving least-square process [32] to removed scattered and possible noise generated from the segmentation. This permits avoiding local minima during the deformable alignment. The contour is finally integrated in the physical system as a stiff force acting on the deformable volume to enforce the alignment by fitting the 2D contours non-rigidly, following

$$\sum_i^m \frac{1}{2} \kappa \|p_i - \mathbf{R}u_i - \mathbf{t}\|^2 \quad (6)$$

where κ is the stiffness coefficient of the contour shape, and is typically of the same orders of magnitude as the Young’s Modulus.

Volume forces as internal energy We consider in the global minimization the model’s volume as internal energy to ensure consistent and realistic deformations. This energy is computed from the general formulation of Eq. 4 describing object’s stiffness as follows:

$$\frac{1}{2} \|\delta \mathbf{u}^\top \mathbf{K} \delta \mathbf{u}\| \quad (7)$$

Projective constraints We include in the system a projective constraint that corresponds to the camera position. This constraint ensures that resulting points \mathbf{u} lie on sightlines

passing through camera position (cf. Figure 5). Mathematically, this amounts to minimizing the following reprojection error:

$$\left\| \frac{\mathbf{P}_1 u_i}{\mathbf{P}_3 u_i} - x_i; \frac{\mathbf{P}_2 u_i}{\mathbf{P}_3 u_i} - y_i \right\| \quad \text{for } i = 1, \dots, m. \quad (8)$$

where \mathbf{P} is the projection matrix and \mathbf{P}_k is its k^{th} row and x_i and y_i the pixel coordinates of each p_i .

Energy minimization Finally, the cost function is written such that: 1) it satisfies the boundary constraints, where the projection of the mesh on the images should result in a minimal distance error, 2) it satisfies the camera pose constraints, and 3) it reaches equilibrium between the internal and external forces of the physical model. This leads to the following expression

$$\begin{aligned} \min_{\mathbf{R}, \mathbf{t}, \delta \mathbf{u}} & \left(\overbrace{\frac{1}{2} \|\delta \mathbf{u}^\top \mathbf{K} \delta \mathbf{u}\|}^{\text{Physical energy}} + \overbrace{\sum_{i \in m} \frac{1}{2} \kappa \|p_i - \mathbf{R}u_i - \mathbf{t}\|^2}^{\text{Contours fitting}} \right) \\ \text{s.t.} & \underbrace{\left\| \frac{\mathbf{P}_1 u_i}{\mathbf{P}_3 u_i} - x_i; \frac{\mathbf{P}_2 u_i}{\mathbf{P}_3 u_i} - y_i \right\|}_{\text{Projective constraints}} \quad \text{for } i = 1, \dots, m. \end{aligned} \quad (9)$$

The question of initialization naturally arises from Eq. 9, where the convergence of the system is sensitive to the camera pose \mathbf{P} . Our framework was designed to easily allow the user to rigidly align the 3D model on the image so the pose can be computed. In practice, we noticed that a rough pose estimation suffices, nevertheless, since the reprojection error will never equal zero, we slightly relax the projective constraints so that it is below 4 pixels. In fact, enforcing this constraint may lead to an alignment with a correct 2D shape projection but an aberrant 3D shape representation. In addition, the physical model ensures an out-of-plane consistency by maintaining a coherent volume altogether.

6 Measuring object and scene appearance

Producing a realistic sequence Q^* depends on the knowledge of the object material properties and scene illumination parameters. The literature on this subject is large [19] and various methods exist that can be sorted depending on the input data and scene conditions. Inspired by [24], we use a simplified Torrance-Sparrow reflection model that defines the specular reflection of an object’s surface point as

$$I_c^*(i) = \left[\frac{k_{d,c} \cos \theta_i}{r^2} + \frac{k_{s,c}}{r^2 \cos \theta_r} \exp \left[\frac{-\alpha^2}{2\sigma^2} \right] \right] \quad \text{with } c \in \{r, g, b\} \quad (10)$$

where $I^*(i)$ is the i^{th} image pixel value, θ_i the angle between the light source direction and the surface normal, θ_r is the

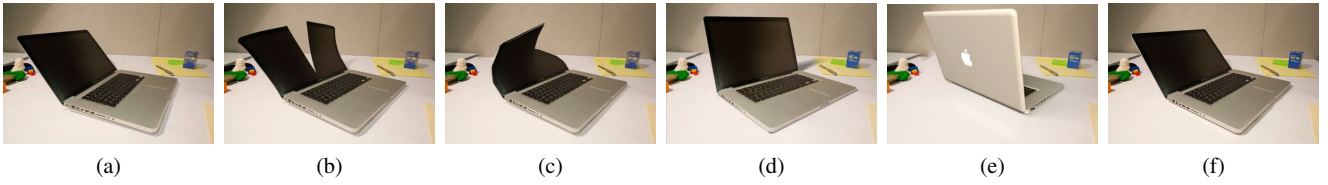


Fig. 6: Appearance comparison of our method in (a), (b) and (c), with [47] based on cuboid proxies in (d), [28] based on stock 3D models with revealing hidden parts in (e) and the original image in (f). Our method produce similar and consistent results, although does not reveal hidden parts.

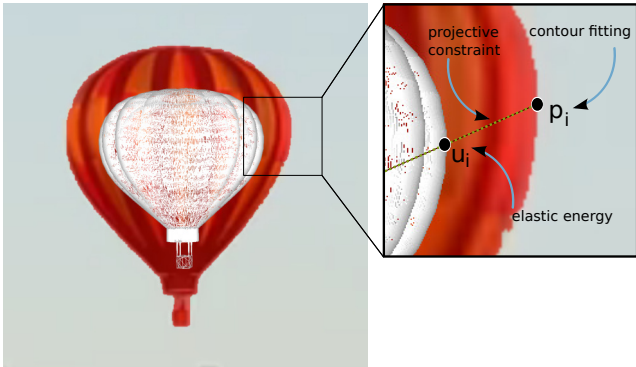


Fig. 5: Model-to-image alignment: energy minimization. We express the problem as an energy minimization problem where the solution is the equilibrium between the internal energy of the physical model \mathbf{u} and the external energy corresponding to object contour fitting \mathbf{p} . The projection constraints are included such that each 3D points u_i lies on a sightline passing through camera position and 2D contour point p_i .

angle between the viewing direction and the surface normal, α is the angle between the surface normal and the intersection of the viewing direction and the light source direction. r represents the distance between the light source and the object surface point, k_d and k_s are coefficients for the diffuse and specular reflection components respectively and include light source intensity, and σ is the surface roughness.

We want to estimate a set of parameters that consists of the specular reflection properties (k_s, σ), diffuse reflection k_d and light source position r from image I and the registered 3D mesh S^* . To do so, we start by directly calculating θ_r , α and θ_i using our inputs. First, the angle θ_r can be obtained using the registered geometry S^* and camera position obtained from 3D/2D alignment, then assuming a unique light source, light source direction can be estimated by back-projecting image specular peaks on geometry normals which permits to estimate α and θ_i . We use the method by Tan *et al.* [42] to obtain the specular regions, simultaneously we generate the diffuse (specular-free) image I_D .

Assuming a Lambertian material with constant albedo, we follow a diffuse-based constraints scheme to first estimate r knowing k_d then we refine for (k_s, σ) to finally solve for (r, k_d, k_s, σ) minimizing the squared error as

$$\operatorname{argmin}_{r, k_d, k_s, \sigma} \sum_{i \in \chi} \tau_i \left(I(i) - \left[\frac{k_d \cos \theta_i}{r^2} + \frac{k_s}{r^2 \cos \theta_r} \exp \left[\frac{-\alpha^2}{2\sigma^2} \right] \right] \right)^2 \quad (11)$$

where I_i the image pixel value of i and τ_i is a compensation factor used to avoid image compensation when computing the residual error. The domain χ represents the region of interest for the optimization scheme, where the diffuse image I_D is used to estimate light position and diffuse reflection where the original image I will be used for specular reflection estimation. Finally, once appearance and illumination have been estimated we use a ray-tracing technique to render the final pixels on a background image I_B . This image is generated using inpainting technique [5] following the contour generated by the user.

Appearance and illumination estimation is only computed once, for a chosen frame of the sequence Q . It is not updated at each frame and thus can be subject to visual inconsistency in case of or light changes or the appearance of hidden part.

7 Scene Dynamics

When dealing with videos, one major challenge is to be able to produce a physically realistic motion that is synchronized with ambient dynamics. To this end we exploit videos to estimate scene dynamics that influence object's motion and we consider two parameters, the velocity \mathbf{v} and the instant of collision t_c . These quantities are extracted by analyzing the image flow on a user-defined region of interest. We thus obtain, from a small set of successive frames, the value of \mathbf{v} that we integrate in the equation of motion of the deformable object following Newton's second law:

$$\mathbf{M} \cdot \dot{\mathbf{v}} = g(\mathbf{u}, \mathbf{v}) + \mathcal{F} \quad (12)$$

where \mathbf{M} is the mass matrix of the object, \mathbf{v} represents the velocities and $\dot{\mathbf{v}}$ the accelerations of the element nodes, $g(\mathbf{u}, \mathbf{v})$ sums up forces that are related to the position or velocities of nodes where the function \mathcal{F} gathers external force-fields (such as gravity). The moment of collision t_c is detected as a sudden change of flow direction and is used as trigger to update the acceleration $\dot{\mathbf{v}}$ or any external forces \mathcal{F} .

Equation 12 is often solved using time-stepping techniques where time is discretized in a sequence of fixed time-steps [1]. Assuming a step $h = t_f - t_i$ where t_i is the time at the beginning and t_f at end of the step, and following an implicit (or backward) Euler integration scheme (often used as it provides increased stability compared to explicit methods especially when dealing with large time-steps), integrating equation 12 leads to:

$$(\mathbf{M} - h \frac{\partial g}{\partial \mathbf{v}} - h^2 \frac{\partial^2 g}{\partial \mathbf{u}^2}) \cdot d\mathbf{v} = h^2 \frac{\partial g}{\partial \mathbf{u}} \mathbf{v}_i - h(\mathbf{g}_i + \mathbf{f}_f) \quad (13)$$

where \mathbf{g}_i and \mathbf{f}_i are $g(\mathbf{u}, \mathbf{v})$ and $\mathcal{F}(t)$ at time t_i . This enables a linear matrix-system $\mathbf{Ax} = \mathbf{b}$ where \mathbf{x} is $d\mathbf{v}$. Solving this equation over time allows computing the motion of the deformable object. We choose to use an iterative algorithm to efficiently solve this problem, for instance the Conjugate Gradient iterative solver [4]. This iterative method can be tuned to achieve accuracy as well as speed by controlling the number of iterations and residual error threshold.

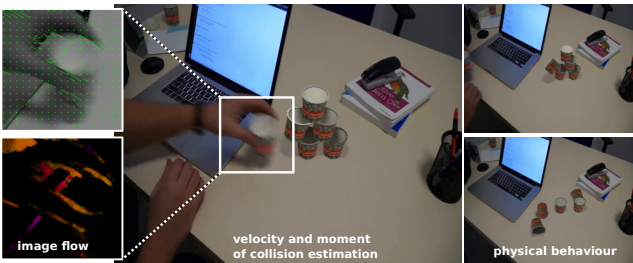


Fig. 7: Scene Dynamics: we estimate velocity \mathbf{v} and instant of collision t_c from the input scene by analyzing the image flow on a user-defined region of interest. Integrating these quantities to Newton’s second law of motion produces a physically realistic motion that is synchronized with ambient dynamics.

8 Boundary Constraints

Frequently, objects are attached to their surroundings. Physically speaking, these attachments are considered as fixed boundary conditions and are modeled by enforcing some nodes to have a null displacement. To this end, the user simply defines on the mesh the fixed regions, which lead to the binary label vector $\mathbf{q} \in \{0, 1\}^n$, where $\mathbf{q}(j) = 1$ means the j^{th}

node is fixed and $\mathbf{q}(j) = 0$ means the j^{th} node can have a free displacement. Adding constraints in equation 12 is usually performed by adding a term $\mathbf{H}^T \lambda$ where \mathbf{H} is a matrix containing the constraint directions (how the vertices are constrained) and λ is a vector of Lagrange multipliers containing the constraint force intensities and is an unknown. The matrix \mathbf{H} is a sparse diagonal matrix where only fixed nodes have non-null coefficients. The equation 13 will thereby be expressed following: $\mathbf{Ax} = \mathbf{b} + h\mathbf{H}(\mathbf{u})^T \lambda$ with h being the integration time-step.

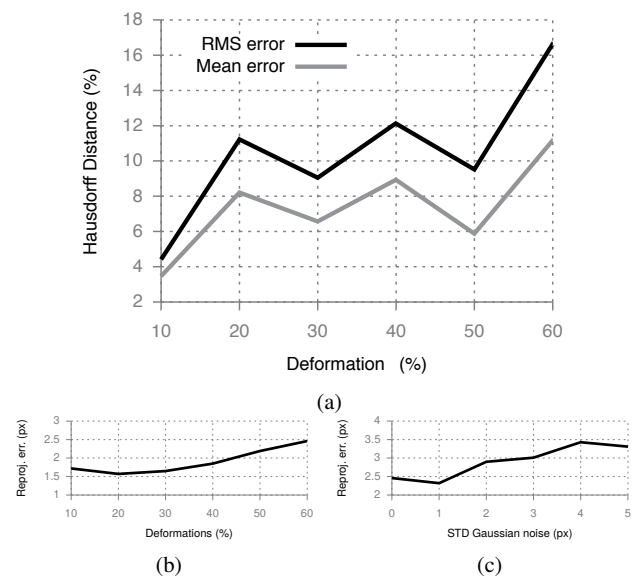


Fig. 8: Quantitative evaluation of the alignment and model refinement on synthetic data. The Hausdorff distance errors of the out-of-plane refinement are below 10% (mean) and below 12% (RMS). The error however slightly increases when deformations reach 60%. The reprojection errors are below 3 px despite the variation of the amount of deformation and the noise perturbation.

9 Results

We present in this section the results obtained on different videos and images, and the experiments conducted to assess our method. We expose an evaluation of the model-to-image alignment on computer-generated data with ground and real data using visual assessment. We compute the reprojection error while varying the amount of deformations between the input 3D CAD model and the (refined) projected one. We then show various user object manipulations and physical properties editing such as pulling, copy-pasting, mass update and cutting, while taking advantage of scene dynamics, if any, to produce physically coherent motion and deforma-

tion. We finally present the user study conducted to evaluate our method, where participants were asked to rate both the ease of the alignment process and the realism of the final composition in term of appearance.

We use the framework SOFA [22] for physics-based modeling, simulation and ray-tracing techniques for rendering. We rely on the GrabCut algorithm [37] for the contour extraction and PatchMatch algorithm for image inpainting [5].

Our dataset includes 8 videos in various environments and with different scenarios (see Figure 12), namely: *air-balloon*, *car-bridge*, *bananas*, *cup*, *eiffel-tower*, *clothsline*, *airplane-wing* and *tower-bridge*. In addition, we also show image edits on the *persistence-of-memory* painting by Salvador Dali. All examples run interactively at the same frame rate as the input video.

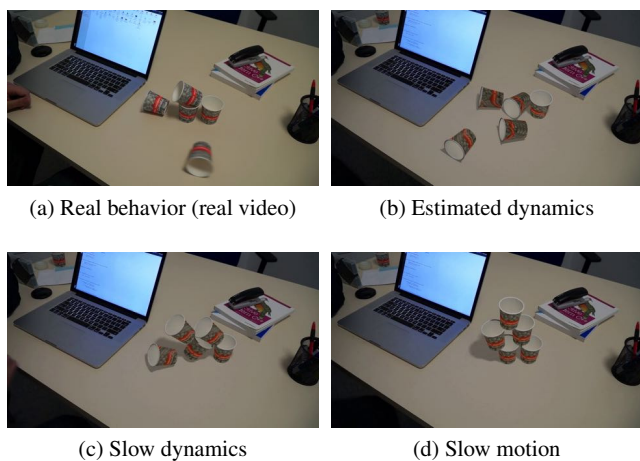


Fig. 9: Scene dynamics: with a real behavior as comparison in (a), the user can choose to produce a natural physical behavior in (b) by estimating scene dynamics from image flow velocity, or to output a slower motion in (c) or a slow motion videos in (d) by tuning the velocity. All these images are taken at the same instant ($t = tc + 1$). Each cup is aligned individually. Please see the additional material.

9.1 Alignment and Model Refinement

In order to evaluate our model-to-image alignment and refinement algorithm, we used computer-generated data as ground truth where we vary the amount of deformation. That is, from an input mesh S , we produce several meshes $S(d)$ with different levels of deformation, where the parameter d means that the newly generated mesh is deformed by $d\%$ with $d \in \{0\%, 10\%, 20\%, 30\%, 40\%, 50\%, 60\%\}$. The amount of deformation is measured as the average percent difference between mesh triangles' area $S = S^*(0)$.

The aim of the algorithm is to find $S^*(d)$ using the input mesh S and the 2D projection of $S(d)$ w.r.t the camera position \mathbf{P} . We choose the reprojection error $\|\mathbf{P}_{S_i^*(d)} - \mathbf{P}_{S_i(d)}\|$ to measure in-plane alignment and the 3D Hausdorff distance (vertex-to-vertex distance) to measure out-of-plane refinement. We also add Gaussian noise with standard deviation $n_{std} \in \{1px, 2px, 3px, 4px, 5px\}$ to the silhouette of the deformed mesh $S^*(60)$ to simulate a scattered contour that we usually obtain from a user-driven contour definition. The results are reported in Figure 8.

Our method produces low reprojection errors, i.e. below 3 px, indicating a good 3D/2D alignment in 2D space. The amplitude of deformation does not highly influence this result, where the variation between $S^*(10)$ and $S^*(60)$ is approximately 1 px. Our method also works well perturbed with noise, where the impact of these perturbations on the reprojection mean error is around 1 px with the most deformed case. The out-of-plane refinement error is also relatively low with 3D mean errors below 10% and 3D RMS error below 12%. The error however slightly increases when the deformations reach 60%.

We finally use our method on real data, with results illustrated in Figure 10.

9.2 Object Manipulations and Physics-based Editing

Rigid transform and copy-paste the user can naturally translate, rotate or scale an object as well as duplicate it. In Figure 12, the *air-balloon*, the *bananas* and the *cup* are duplicated and moved all over the scene. This copy-paste implicitly implies the physical model, however, volume resolution and physical attributes can be set as desired for each object.

Non-rigid manipulation we enable object manipulation in a 3D manner. Most of the time these manipulations include stretching, torsion, and compression. Apart from the *cup* example, all examples in Figure 12 show non-rigid user interactions. The produced deformations highly depends on the values of E the Young's modulus, and μ the Poisson ratio. For users not accustomed to using physical engines, pre-defined parameters are set according to object size and units. The method also handles topological changes such as cutting or fracturing, illustrated in Figure 12 (*bananas* and *car-bridge*).

Collision collisions are detected by computing a proximity distance between two or more objects in the scene. As the contact test can be computationally expensive, we only consider object vertices as primitives for the detection. Our method enables rigid/rigid collisions (*cup*), rigid/deformable collisions and deformable/deformable collisions (*bananas*). The contact response is computed following the method described here [39]. From a user's point of view, friction and

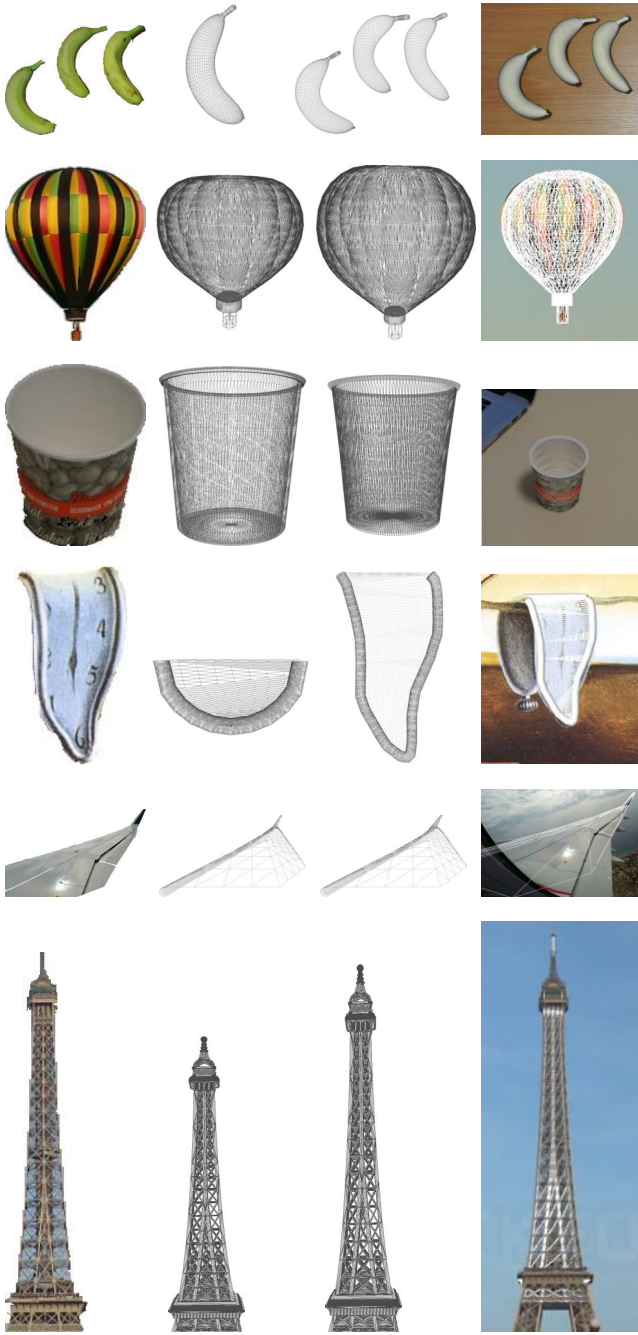


Fig. 10: 3D Model refinement and alignment: The first column represents the user-defined contour, the second the input 3D CAD model from proxy, the third the refined model and the fourth column represents the 3D/2D alignment. (The *eiffel-tower* overlay shows a decimated mesh for better visualization).

minimal proximity values are parameters to be set (for instance $0.1N$ and $5mm$ respectively) as well as including or excluding colliding objects in the scene. Note that the table

(*cup* and *bananas* examples) is manually added by the user and represent a 2D plan

Scene dynamics recovering scene motion parameters consists on estimating velocity and moment of collisions to synchronize them with scene dynamics. In the results shown, we used this principle in three examples: *air-balloon*, the *cup* and *clothline*. In the *air-balloon* example, an initial velocity is estimated from the original object and integrated into the simulation. Assuming a linear motion, this leads to continuously translating the object with a constant speed. With the *cup* example, we estimate velocity (and thereby acceleration) to reflect the fall of an object in a consistent manner (see Figure 9). The recognition of a sudden change of motion permits obtaining the exact time of collision. The nature of the fall can be tuned by the user through changing velocity and acceleration. The time step parameter h can also affect the behavior, where a small time-step will lead to transient effect (vibrations), in contrast to a large time-step that will produce a smoother motion. Similarly, wind speed can be estimated from videos. In *clothline* example, the velocity is converted to pressure and act as external force on the mesh surface. The wind speed (now represented as force in \mathcal{F}) can then be increased as desired by the user.

Physical properties editing physical attributes, whether intrinsic (related to the object, such as stiffness or mass), or extrinsic (related to the scene, such as gravity, or external forces), can be updated online – directly in the video. In the *air-balloon* example, we simulate deflation by reducing the stiffness from E to $E \times 10^{-3}$, with $E = 1500KPa$ and $v = 0.45$. The deflation is undone by resetting the initial value of E , producing an immediate inflation. We also increase the gravity from g to $g \times 4$, with $g = 9.8m/s^2$ so that all objects in the scene fall. This results is similar to increasing the mass of an object as in the *car-bridge* example where the mass is increased from m to $m \times 10^3$. Initial parameters are reported in table 1.

Example	Elements	Resolution	E (KPa)	v	Framerate
Banana (each)	24 hexa.	69 vert.	2500	0.45	16 fps
Airballoon	742 tetra.	1064 vert.	1500	0.45	26 fps
Cup (each)	33 hexa.	64 vert.	-	-	15 fps
Dali	535 tetra.	974 vert.	25	0.35	27 fps
Wing	89 hexa.	226 vert.	1500	0.45	29 fps
Eiffel	323 hexa.	616 vert.	2500	0.45	19 fps
Bridge	56 hexa.	144 vert.	2500	0.45	29 fps
Tower Bridge	129 tetra.	232 vert.	3500	0.40	22 fps
Clothlines	624 tetra.	1590 vert.	100	0.45	29 fps

Table 1: Parameters used in the simulation and corresponding runtime.

9.3 User Study

We conducted a user study where we asked participants to evaluate both the realism of the final composition in term of appearance and the practicality of the 3D/2D alignment.

We prepared for the appearance study 10 pairs of images composed of the first frame of the original video and the corresponding output (with no deformations). The images are presented in a randomly permuted order, on a web-based form and participants are asked to classify, in less than 5 seconds, each image as *realistic* or *not realistic*. The user is forced to choose one of the two choices. The study comprised 22 participants, mostly graduated from computer science and with some computer graphics knowledge. On the 22 participants, an average of 40.33 % users classified the output image as *not realistic* where 71.08 % classified the original image as *realistic*.

For the alignment study, users are asked to rate and evaluate their ability to align the 3D model on the 2D contour by rating the practicality of the method from 1 (*not practical at all*) to 5 (*very practical*). We choose the *bananas* example (cf Figure 10, first row) where users are asked to successively perform the alignment on each contour. The study comprised 7 participants, mostly with computer graphics background that rated our method with an average of 4.35. We also compare our method with a control-point based alignment approach where we measure the time taken to align the 3D model on all projections. The contour extraction is included in the time measure for our method, where it's excluded for the control-point based approach. Using our method, the average time needed to perform the alignment is 56 seconds (*min* = 42 seconds; *max* = 91 seconds) with a maximum of 34 seconds per projection, while the average measured time for the control-point based approach is 8 : 53 minutes (*min* = 5 : 05 minutes; *max* = 13 : 54 minutes) with a maximum of 6 : 41 minutes per projection .

10 Limitations

The main limitations of our system reside in the adequate estimation of a 3D alignment solely from a 2D contour. This limitation represents a fundamental problem, since its under-constrained nature makes it mathematically ill-posed. Ideally, we would have a 3D abstraction of the scene making the alignment fully automatic and more accurate. Our work can highly benefit from recent works based on neural networks [14], [46], where 3D reconstructions are computed using learned models that extract shape priors from large collection of 3D data.

With dynamic backgrounds in videos, a temporal and coherent in-painting algorithm is necessary to produce a final composition without visual break (see middle Fig.11). Although we consider this issue as a general limitation that we

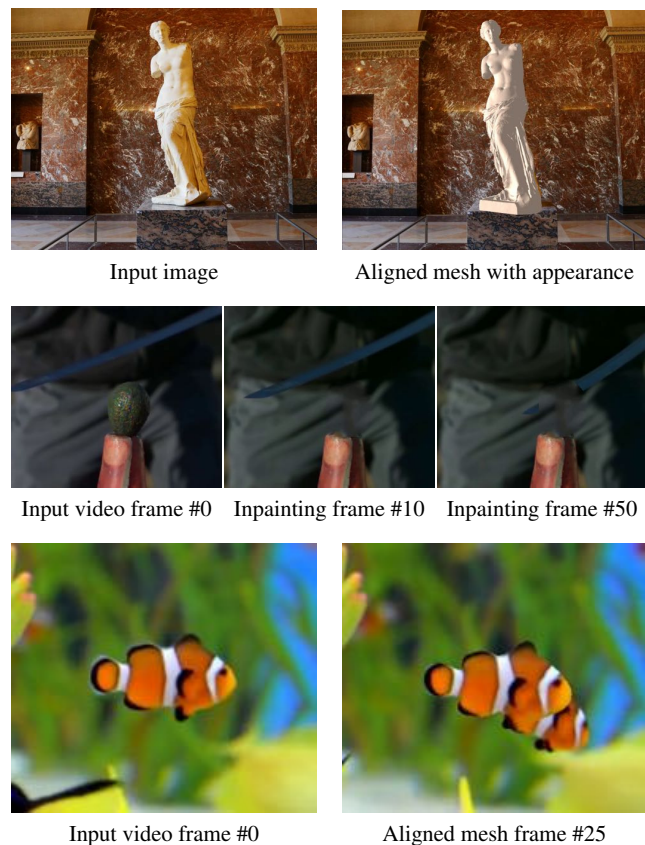


Fig. 11: Current limitations of our method include the inability to estimate adequate appearance in the presence of shading and complex geometry (top), to handle dynamic background (middle) and moving objects (bottom).

do not solve in our main focus, using physics-based models and scene dynamics can bring useful information to the establishment of a temporal inpainting, where object position can be predicted in time, and their silhouette can be used to compensate the new revealed parts of the video.

Interacting with objects in videos can produces occlusions, especially with newly inserted objects which can lead to visual failures. With a 3D abstraction of the scene one can avoid these artifacts. However, it remains a challenging problem when dealing with a monocular camera where scene depth is unavailable.

Our algorithm for appearance estimation may fail in the presence of complex geometry where intra-object shadows largely impact the diffuse and albedo values (see top Fig. 11). The literature on this domain is extensive and other methods can easily be plugged to our system.

We provide the user with pre-defined initial physical parameters, computed from mesh magnitude and units. As the same way as scene dynamics, and following recent studies [17], we could exploit vibrations to estimate object's mass

and stiffness to produce realistic physical output when dealing with deformable objects.

Finally, videos with moving objects such as in bottom Fig.11 are not supported in this work (except simple and linear motion). Integrating such kind of dynamics is possible through the continuous estimation of camera pose, image background, model appearance and objects collisions.

11 Conclusion

We presented Calipso, an interactive system for image and video editing in which the user can make physics-based 3D edits in an intuitive way. Stock 3D objects can be easily adapted to the image or video using an efficient elastic 3D-2D registration that fits the geometry to its silhouette in the image. Then, changing the object geometry, appearance and physical properties is made easy using the underlying physics-based model. At this stage of editing, the user can interact with the virtual object in many ways, from affine transformations to elastic deformations, while accounting for topological changes and collisions with the environment. In addition, it is possible to exploit time-dependent information from videos to estimate, for instance, the object's velocity and more generally to synchronize the simulation with the scene's ambient dynamics. This leads to a natural behavior of the inserted object across multiple frames of a video. We tested our approach on several examples, showing that physics-based manipulations produce visually realistic videos with both natural and unnatural physical behavior, as desired by the user. We also showed that our approach leads to low in-plane and out-of-plane alignment errors, while ensuring a significant gain in user interactions and manipulation time. We believe that a natural extension of this work would be to handle videos where the camera is in motion. This would allow to fully exploit the 3D nature of the proxy and the fact that it can be seen from different view points.

12 Compliance with Ethical Standards

All authors declare having no conflict of interest.

13 Acknowledgments

Authors would like to thank Kamel Achiri for helping with the CAD models, the user study participants for their time and Basile Sauvage and Frederic Larue for valuable input regarding this work.

References

1. Anitescu, M., Potra, F.A., Stewart, D.E.: Time-stepping for three-dimensional rigid body dynamics. *Computer methods in applied mechanics and engineering* **177**(3), 183–197 (1999)
2. Avidan, S., Shamir, A.: Seam carving for content-aware image resizing. In: *ACM Transactions on graphics*, vol. 26, p. 10 (2007)
3. Bai, J., Agarwala, A., Agrawala, M., Ramamoorthi, R.: Selectively de-animating video. *ACM Trans. Graph.* **31**(4), 66–1 (2012)
4. Baraff, D., Witkin, A.: Large steps in cloth simulation. In: *Proceedings of the 25th annual conference on Computer graphics and interactive techniques*, pp. 43–54. ACM (1998)
5. Barnes, C., Shechtman, E., Finkelstein, A., Goldman, D.: Patch-match: a randomized correspondence algorithm for structural image editing. In: *ACM Transactions on Graphics-TOG*, vol. 28, p. 24 (2009)
6. Barrett, W.A., Cheney, A.S.: Object-based image editing. In: *ACM Transactions on Graphics*, vol. 21, pp. 777–784 (2002)
7. Bazin, J.C., Yu, G., Martin, T., Jacobson, A., Gross, M., et al.: Physically based video editing. In: *Computer Graphics Forum*, vol. 35, pp. 421–429 (2016)
8. Blanz, V., Vetter, T.: A morphable model for the synthesis of 3d faces. In: *Proceedings of the 26th annual conference on Computer graphics and interactive techniques*, pp. 187–194. ACM Press/Addison-Wesley Publishing Co. (1999)
9. Bookstein, F.L.: Principal warps: Thin-plate splines and the decomposition of deformations. *IEEE Trans. Pattern Anal. Mach. Intell.* **11**(6), 567–585 (1989)
10. Chang, C.S., Chu, H.K., Mitra, N.J.: Interactive Videos: Plausible Video Editing using Sparse Structure Points. *Computer Graphics Forum* (2016). DOI 10.1111/cgf.12849
11. Chen, J., Paris, S., Wang, J., Matusik, W., Cohen, M., Durand, F.: The video mesh: A data structure for image-based three-dimensional video editing. In: *Computational Photography (ICCP), 2011 IEEE International Conference on*, pp. 1–8 (2011)
12. Chen, T., Cheng, M.M., Tan, P., Shamir, A., Hu, S.M.: Sketch2photo: internet image montage. *ACM Transactions on Graphics (TOG)* **28**(5), 124 (2009)
13. Chen, T., Zhu, Z., Shamir, A., Hu, S.M., Cohen-Or, D.: 3-sweep: extracting editable objects from a single photo. *ACM Transactions on Graphics (TOG)* **32**(6), 195 (2013)
14. Choy, C.B., Xu, D., Gwak, J., Chen, K., Savarese, S.: 3D-R2N2: A Unified Approach for Single and Multi-view 3D Object Reconstruction, pp. 628–644 (2016)
15. Coquillart, S.: Extended free-form deformation: A sculpturing tool for 3d geometric modeling. In: *Proceedings of the 17th Annual Conference on Computer Graphics and Interactive Techniques, SIGGRAPH '90*, pp. 187–196. ACM, New York, NY, USA (1990)
16. Courtecuisse, H., Allard, J., Kerfriden, P., Bordas, S.P.A., Cotin, S., Duriez, C.: Real-time simulation of contact and cutting of heterogeneous soft-tissues. *Medical Image Analysis* **18**(2), 394–410 (2014)
17. Davis, A., Bouman, K.L., Chen, J.G., Rubinstein, M., Buyukozturk, O., Durand, F., Freeman, W.T.: Visual vibrometry: Estimating material properties from small motions in video. *IEEE Trans. Pattern Anal. Mach. Intell.* **PP**(99), 1–1 (2016)
18. Davis, A., Chen, J.G., Durand, F.: Image-space modal bases for plausible manipulation of objects in video. *ACM Transactions on Graphics (TOG)* **34**(6), 239 (2015)
19. Debevec, P.: Rendering synthetic objects into real scenes: Bridging traditional and image-based graphics with global illumination and high dynamic range photography. In: *ACM SIGGRAPH 2008 classes*, p. 32. ACM (2008)
20. Debevec, P.E., Taylor, C.J., Malik, J.: Modeling and rendering architecture from photographs: A hybrid geometry-and image-based approach. In: *Proceedings of the 23rd annual conference on Computer graphics and interactive techniques*, pp. 11–20. ACM (1996)

21. Fang, H., Hart, J.C.: Textureshop: texture synthesis as a photograph editing tool. *ACM Transactions on Graphics (TOG)* **23**(3), 354–359 (2004)
22. Faure, F., Duriez, C., Delingette, H., Allard, J., Gilles, B., Marchesseau, S., Talbot, H., Courtecuisse, H., Bousquet, G., Peterlik, I., Cotin, S.: SOFA: A Multi-Model Framework for Interactive Physical Simulation. In: *Soft Tissue Biomechanical Modeling for Computer Assisted Surgery*, vol. 11, pp. 283–321 (2012)
23. Goldberg, C., Chen, T., Zhang, F.L., Shamir, A., Hu, S.M.: Data-driven object manipulation in images. In: *Computer Graphics Forum*, vol. 31, pp. 265–274 (2012)
24. Hara, K., Nishino, K., Ikeuchi, K.: Light source position and reflectance estimation from a single view without the distant illumination assumption. *IEEE Transactions on Pattern Analysis and Machine Intelligence* **27**(4), 493–505 (2005). DOI 10.1109/TPAMI.2005.82
25. Jain, A., Thormählen, T., Seidel, H.P., Theobalt, C.: Moviere-shape: Tracking and reshaping of humans in videos. In: *ACM Transactions on Graphics (TOG)*, vol. 29, p. 148 (2010)
26. Karsch, K., Hedau, V., Forsyth, D., Hoiem, D.: Rendering synthetic objects into legacy photographs. In: *ACM Transactions on Graphics (TOG)*, vol. 30, p. 157. ACM (2011)
27. Khan, E.A., Reinhard, E., Fleming, R.W., Bühlhoff, H.H.: Image-based material editing. *ACM Transactions on Graphics (TOG)* **25**(3), 654–663 (2006)
28. Kholgade, N., Simon, T., Efros, A., Sheikh, Y.: 3d object manipulation in a single photograph using stock 3d models. *ACM Transactions on Graphics (TOG)* **33**(4), 127 (2014)
29. Kikuuwe, R., Tabuchi, H., Yamamoto, M.: An edge-based computationally efficient formulation of saint venant-kirchhoff tetrahedral finite elements. *ACM Transactions on Graphics (TOG)* **28**(1), 8 (2009)
30. Lalonde, J.F., Hoiem, D., Efros, A.A., Rother, C., Winn, J., Criminisi, A.: Photo clip art. In: *ACM transactions on graphics (TOG)*, vol. 26, p. 3. ACM (2007)
31. Lepetit, V., Moreno-Noguer, F., Fua, P.: Epnnp: An accurate o(n) solution to the pnp problem. *International Journal of Computer Vision* **81**(2), 155 (2008)
32. Levin, D.: Mesh-independent surface interpolation. In: G. Brunnett, B. Hamann, H. Müller, L. Linsen (eds.) *Geometric Modeling for Scientific Visualization, Mathematics and Visualization*, pp. 37–49 (2004)
33. Monszpart, A., Thuerey, N., Mitra, N.J.: Smash: Physics-guided reconstruction of collisions from videos. *ACM Trans. Graph.* **35**(6), 199:1–199:14 (2016). DOI 10.1145/2980179.2982421. URL <http://doi.acm.org/10.1145/2980179.2982421>
34. Nealen, A., Müller, M., Keiser, R., Boxerman, E., Carlson, M.: Physically based deformable models in computer graphics. In: *Computer Graphics Forum*, vol. 25 (4), pp. 809–836. Wiley Online Library (2006)
35. Oh, B.M., Chen, M., Dorsey, J., Durand, F.: Image-based modeling and photo editing. In: *Proceedings of the 28th annual conference on Computer graphics and interactive techniques*, pp. 433–442. ACM (2001)
36. Okabe, M., Dobashi, Y., Anjyo, K.: Animating pictures of water scenes using video retrieval. *Vis. Comput.* **34**(3), 347–358 (2018). DOI 10.1007/s00371-016-1337-6. URL <https://doi.org/10.1007/s00371-016-1337-6>
37. Rother, C., Kolmogorov, V., Blake, A.: "grabcut": Interactive foreground extraction using iterated graph cuts. *ACM Trans. Graph.* **23**(3), 309–314 (2004)
38. Russell, B.C., Torralba, A., Murphy, K.P., Freeman, W.T.: Labelme: a database and web-based tool for image annotation. *International Journal of computer vision* **77**(1-3), 157–173 (2008)
39. Saupin, G., Duriez, C., Cotin, S., Grisoni, L.: Efficient contact modeling using compliance warping. In: *computer graphics international* (2008)
40. Shao, T., Monszpart, A., Zheng, Y., Koo, B., Xu, W., Zhou, K., Mitra, N.J.: Imagining the unseen: Stability-based cuboid arrangements for scene understanding. *ACM Trans. Graph.* **33**(6), 209:1–209:11 (2014). DOI 10.1145/2661229.2661288. URL <http://doi.acm.org/10.1145/2661229.2661288>
41. Sorkine, O., Alexa, M.: As-rigid-as-possible surface modeling. In: *Symposium on Geometry processing*, vol. 4 (2007)
42. Tan, R.T., Ikeuchi, K.: Separating reflection components of textured surfaces using a single image. *IEEE Transactions on Pattern Analysis and Machine Intelligence* **27**(2), 178–193 (2005). DOI 10.1109/TPAMI.2005.36
43. Teramoto, O., Park, I.K., Igarashi, T.: Interactive motion photography from a single image. *The Visual Computer* **26**(11), 1339–1348 (2010). DOI 10.1007/s00371-009-0405-6. URL <https://doi.org/10.1007/s00371-009-0405-6>
44. Thies, J., Zollhöfer, M., Nießner, M., Valgaerts, L., Stamminger, M., Theobalt, C.: Real-time expression transfer for facial reenactment. *ACM Transactions on Graphics (TOG)* **34**(6), 183 (2015)
45. Thies, J., Zollhöfer, M., Stamminger, M., Theobalt, C., Nießner, M.: Face2face: Real-time face capture and reenactment of rgb videos. *Proc. Computer Vision and Pattern Recognition (CVPR)*, IEEE **1** (2016)
46. Xie, J., Girshick, R., Farhadi, A.: Deep3D: Fully Automatic 2D-to-3D Video Conversion with Deep Convolutional Neural Networks, pp. 842–857. Cham (2016)
47. Zheng, Y., Chen, X., Cheng, M.M., Zhou, K., Hu, S.M., Mitra, N.J.: Interactive images: cuboid proxies for smart image manipulation. *ACM Trans. Graph.* **31**(4), 99–1 (2012)
48. Zhou, S., Fu, H., Liu, L., Cohen-Or, D., Han, X.: Parametric reshaping of human bodies in images. *ACM Trans. Graph.* **29**(4), 126:1–126:10 (2010). DOI 10.1145/1778765.1778863. URL <http://doi.acm.org/10.1145/1778765.1778863>

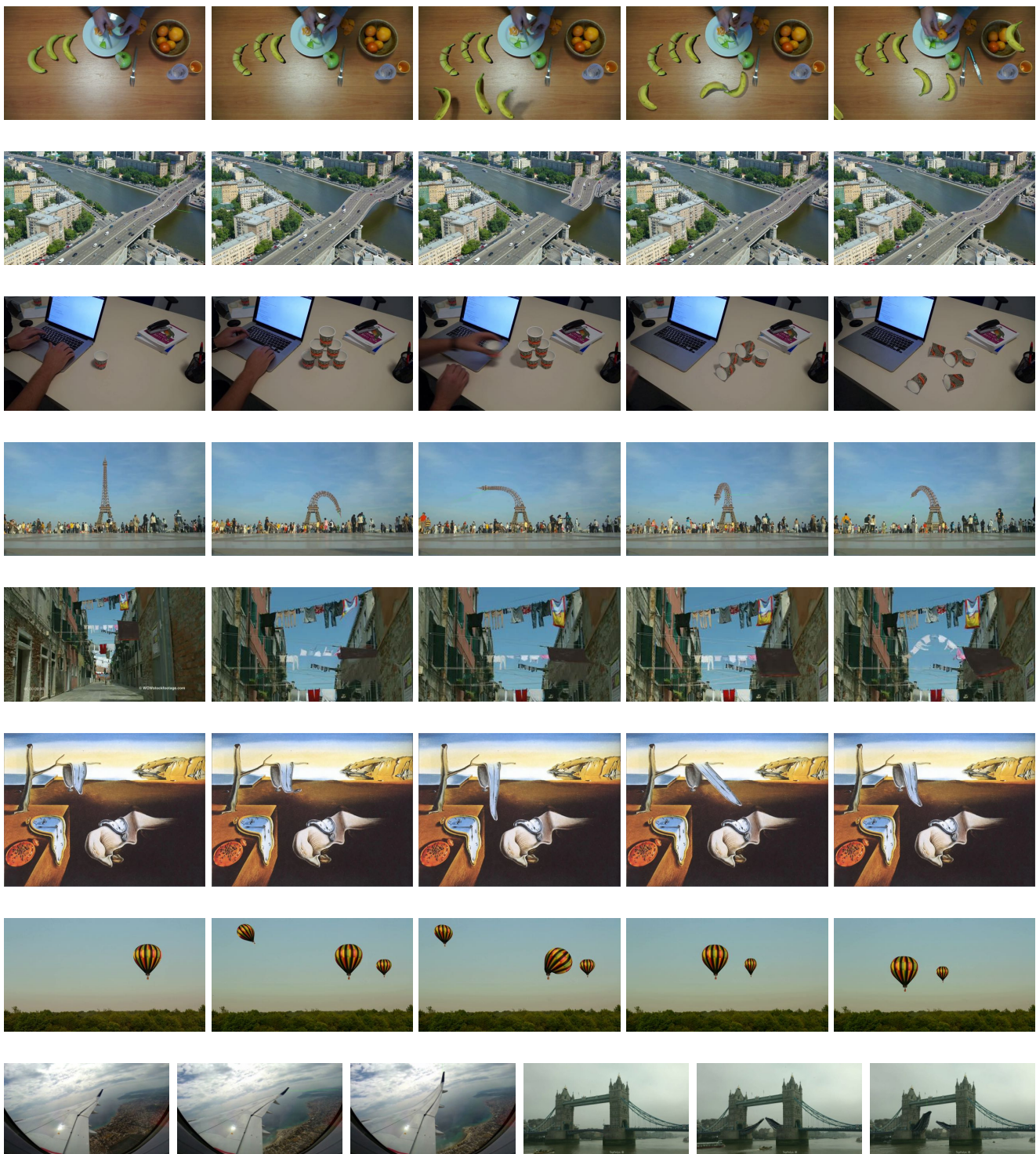


Fig. 12: 3D physics-based manipulations of various objects in images and videos. Our method enables automatic alignment and refinement of an input 3D mesh while matching the visual characteristics of the original scene, as shown in the first image of each sequence. The user can interact with objects through a rich range of manipulations, including rigid transforms, geometry and topological changes, elastic deformations, collision and physical parameter updates such as mass, stiffness or gravity, and thereby cut the bananas and let them collide with a table, increase the mass of a car bridge and fold it up, create a pyramid of cups and make it fall, bend the Eiffel Tower, make the wind blow to wave the cloths, melt a watch in a painting, duplicate the air balloon and deform it and deflate it, stretch an airplane wing, and create an elastic Tower Bridge. [video sequences are shown in the supplemental video]