



HAL
open science

How Many Random Seeds? Statistical Power Analysis in Deep Reinforcement Learning Experiments

Cédric Colas, Olivier Sigaud, Pierre-Yves Oudeyer

► **To cite this version:**

Cédric Colas, Olivier Sigaud, Pierre-Yves Oudeyer. How Many Random Seeds? Statistical Power Analysis in Deep Reinforcement Learning Experiments. 2018. hal-01890154

HAL Id: hal-01890154

<https://inria.hal.science/hal-01890154v1>

Preprint submitted on 8 Oct 2018

HAL is a multi-disciplinary open access archive for the deposit and dissemination of scientific research documents, whether they are published or not. The documents may come from teaching and research institutions in France or abroad, or from public or private research centers.

L'archive ouverte pluridisciplinaire **HAL**, est destinée au dépôt et à la diffusion de documents scientifiques de niveau recherche, publiés ou non, émanant des établissements d'enseignement et de recherche français ou étrangers, des laboratoires publics ou privés.

How Many Random Seeds? Statistical Power Analysis in Deep Reinforcement Learning Experiments

Cédric Colas¹, Olivier Sigaud^{1,2} and Pierre-Yves Oudeyer¹

¹INRIA, Flowers team, Bordeaux, France

²Sorbonne Université, ISIR, Paris, France

Abstract

Consistently checking the statistical significance of experimental results is one of the mandatory methodological steps to address the so-called “reproducibility crisis” in deep reinforcement learning. In this tutorial paper, we explain how the number of random seeds relates to the probabilities of statistical errors. For both the t-test and the bootstrap confidence interval test, we recall theoretical guidelines to determine the number of random seeds one should use to provide a statistically significant comparison of the performance of two algorithms. Finally, we discuss the influence of deviations from the assumptions usually made by statistical tests. We show that they can lead to inaccurate evaluations of statistical errors and provide guidelines to counter these negative effects. We make our code available to perform the tests¹.

1 Introduction

Reproducibility in Machine Learning and Deep Reinforcement Learning (RL) in particular has become a serious issue in the recent years. As pointed out in (Islam et al., 2017) and (Henderson et al., 2017), reproducing the results of an RL paper can turn out to be much more complicated than expected. Indeed, codebases are not always released and scientific papers often omit parts of the implementation tricks. Recently, Henderson et al. conducted a thorough investigation of various parameters causing this reproducibility crisis. They used trendy deep RL algorithms such as DDPG (Lillicrap et al., 2015), ACKTR (Wu et al., 2017), TRPO (Schulman et al., 2015) and PPO (Schulman et al., 2017) with OpenAI Gym (Brockman et al., 2016) popular benchmarks such as Half-Cheetah, Hopper and Swimmer, to study the effects of the codebase, the size of the networks, the activation function, the reward scaling or the random seeds. Among other results, they showed that different implementations of the same algorithm with the same set of hyper-parameters led to drastically different results.

¹Available on github at <https://github.com/flowersteam/rl-difference-testing>

Perhaps the most surprising thing is this: running the same algorithm 10 times with the same hyper-parameters using 10 different random seeds and averaging performance over two splits of 5 seeds can lead to learning curves seemingly coming from different statistical distributions. Notably, all the deep RL papers reviewed by [Henderson et al.](#) (theirs included) used 5 seeds or less. Even worse, some papers actually report the average of the best performing runs. As demonstrated in ([Henderson et al., 2017](#)), these methodologies can lead to claim that two algorithms performances are different when they are not. A solution to this problem is to use more random seeds, to average more different trials in order to obtain a more robust measure of the algorithm performance. But how can one determine how many random seeds should be used? Shall we use 5, 10 or 100, as in ([Mania et al., 2018](#))?

This work assumes one wants to test a difference in performance between two algorithms. Section 2 gives definitions and describes the statistical problem of *difference testing* while Section 3 proposes two statistical tests to answer this problem. In Section 4, we present standard guidelines to choose the sample size so as to meet requirements in the two types of *statistical errors*. Finally, we challenge the assumptions made in the previous section and propose guidelines to estimate error rates empirically in Section 5. The code is available on Github at <https://github.com/flowersteam/rl-difference-testing>.

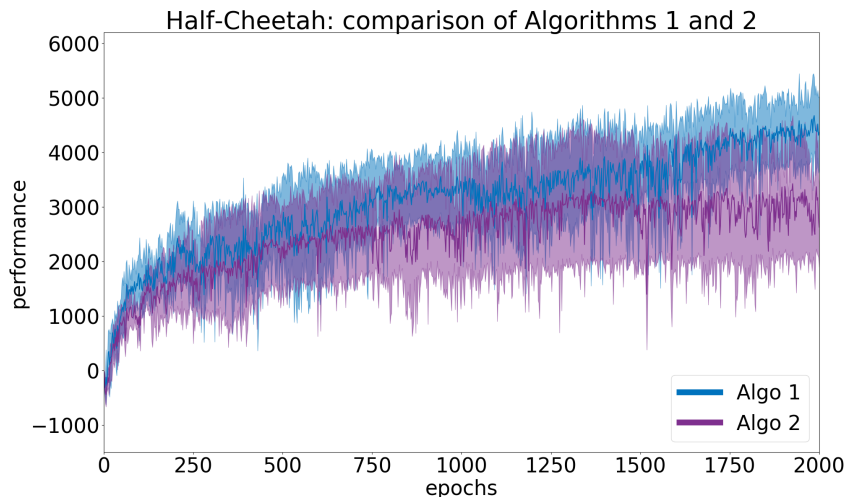


Figure 1: *Algo1* versus *Algo2* are two famous Deep RL algorithms, here tested on the Half-Cheetah benchmark. The mean and confidence interval for 5 seeds are reported. We might consider that *Algo1* outperforms *Algo2* because there is not much overlap between the 95% confidence intervals. But is it sufficient evidence that *Algo1* really performs better? Below, we show that the performances of these algorithms is actually the same, and explain which methods should be used to have more reliable evidence of the (non-)difference among two algorithms.

2 Definition of the statistical problem

2.1 First definitions

Two runs of the same algorithm often yield different measures of performance. This might be due to various factors such as the seed of the random generators (called *random seed* or *seed* thereafter), the initial state of the agent, the stochasticity of the environment, etc. Formally, the performance of an algorithm can be modeled as a *random variable* X and running this algorithm in an environment results in a *realization* x^i . Repeating the procedure N times, one obtains a statistical *sample* $x = (x^1, \dots, x^N)$. A random variable is usually characterized by its *expected value* or *mean* μ and its *standard deviation*, noted σ . While the mean characterizes the expected value of a realization, the standard deviation evaluates the square root of the squared deviations to this mean, or in simpler words, how far from the mean the realization are expected to fall. Of course, the values of μ and σ are unknown. The only thing one can do is to compute their unbiased estimations \bar{x} and s :

$$\bar{x} \doteq \sum_{i=1}^n x^i, \quad s \doteq \sqrt{\frac{\sum_{i=1}^N (x^i - \bar{x})^2}{N - 1}}, \quad (1)$$

where \bar{x} is called the empirical mean, and s is called the empirical standard deviation. The larger the sample size N , the more confidence one can be in the estimations.

Here, two algorithms with respective performances X_1 and X_2 are compared. If X_1 and X_2 follow normal distributions, the random variable describing their difference ($X_{\text{diff}} = X_1 - X_2$) also follows a normal distribution with parameters $\sigma_{\text{diff}} = (\sigma_1^2 + \sigma_2^2)^{1/2}$ and $\mu_{\text{diff}} = \mu_1 - \mu_2$. In this case, the estimator of the mean of X_{diff} is $\bar{x}_{\text{diff}} = \bar{x}_1 - \bar{x}_2$ and the estimator of σ_{diff} is $s_{\text{diff}} = \sqrt{s_1^2 + s_2^2}$. The *effect size* ϵ can be defined as the difference between the mean performances of both algorithms: $\epsilon = \mu_1 - \mu_2$.

Testing for a difference between the performances of two algorithms (μ_1 and μ_2) is mathematically equivalent to testing a difference between their difference μ_{diff} and 0. The second point of view is considered from now on. We draw a sample x_{diff} from X_{diff} by subtracting two samples x_1 and x_2 obtained from X_1 and X_2 .

Example 1. To illustrate difference testing, we use two algorithms (*Algo1* and *Algo2*) and compare them on the Half-Cheetah environment from the OpenAI Gym framework (Brockman et al., 2016). The algorithms implemented are not so important here and will be revealed later. First, we run a study with $N = 5$ random seeds for each. Figure 1 shows the average learning curves with 95% confidence intervals. Each point of a learning curve is the average cumulated reward over 10 evaluation episodes. The *measure of performance* X_i of *Algo i* is the average performance over the last 10 points (i.e. last 100 evaluation episodes). From Figure 1, it seems that *Algo1* performs better than *Algo2*. Moreover, the confidence intervals do not seem to overlap much. However, we need to run statistical tests before drawing any conclusion.

2.2 Comparing performances with a difference test

In a *difference test*, statisticians define the *null hypothesis* H_0 and the *alternate hypothesis* H_a . H_0 assumes no difference whereas H_a assumes one:

- $H_0: \mu_{\text{diff}} = 0$
- $H_a: \mu_{\text{diff}} \neq 0$

These hypotheses refer to the *two-tail* case. When an a priori on which algorithm performs best is available, (say *Algo1*), one can use the *one-tail* version:

- $H_0: \mu_{\text{diff}} \leq 0$
- $H_a: \mu_{\text{diff}} > 0$

At first, a statistical test always assumes the null hypothesis. Once a sample x_{diff} is collected from X_{diff} , one can estimate the probability p (called *p-value*) of observing data as extreme, under the null hypothesis assumption. By *extreme*, one means far from the null hypothesis (\bar{x}_{diff} far from 0). The *p-value* answers the following question: *how probable is it to observe this sample or a more extreme one, given that there is no true difference in the performances of both algorithms?* Mathematically, we can write it this way for the one-tail case:

$$p\text{-value} = P(X_{\text{diff}} \geq \bar{x}_{\text{diff}} | H_0), \quad (2)$$

and this way for the two-tail case:

$$p\text{-value} = \begin{cases} P(X_{\text{diff}} \geq \bar{x}_{\text{diff}} | H_0) & \text{if } \bar{x}_{\text{diff}} > 0 \\ P(X_{\text{diff}} \leq \bar{x}_{\text{diff}} | H_0) & \text{if } \bar{x}_{\text{diff}} \leq 0. \end{cases} \quad (3)$$

When this probability becomes really low, it means that it is highly improbable that two algorithms with no performance difference produced the collected

sample x_{diff} . A difference is called *significant at significance level α* when the p -value is lower than α in the one-tail case, and lower than $\alpha/2$ in the two tail case (to account for the two-sided test²). Usually α is set to 0.05 or lower. In this case, the low probability to observe the collected sample under hypothesis H_0 results in its rejection. Note that a significance level $\alpha = 0.05$ still results in 1 chance out of 20 to claim a false positive, to claim that there is a true difference when there is not. It is important to note that, when one is conducting N_E experiments, the false positive rate grows linearly with the number of experiments. In this case, one should use correction for multiple comparisons such as the Bonferroni correction $\alpha_{Bon} = \alpha/N_E$ (Rice, 1989). This controls the familywise error rate ($FWER$), the probability of rejecting at least one true null hypothesis ($FWER < \alpha$). Its use is discussed in (Cabin and Mitchell, 2000).

Another way to see this, is to consider confidence intervals. Two kinds of confidence intervals can be computed:

- CI_1 : The $100 \cdot (1 - \alpha)$ % confidence interval for the mean of the difference μ_{diff} given a sample x_{diff} characterized by \bar{x}_{diff} and s_{diff} .
- CI_2 : The $100 \cdot (1 - \alpha)$ % confidence interval for any realization of X_{diff} under H_0 (assuming $\mu_{\text{diff}} = 0$).

Having CI_2 that does not include \bar{x}_{diff} is mathematically equivalent to a p -value below α . In both cases, it means there is less than $100 \cdot \alpha\%$ chance that $\mu_{\text{diff}} = 0$ under H_0 . When CI_1 does not include 0, we are also $100 \cdot (1 - \alpha)$ % confident that $\mu \neq 0$, without assuming H_0 . Proving one of these things leads to conclude that the difference is *significant at level α* .

2.3 Statistical errors

In hypothesis testing, the statistical test can conclude H_0 or H_a while each of them can be either true or false. There are four cases:

Table 1: Hypothesis testing

predicted/true	H_0	H_a
H_0	True negative $1 - \alpha$	False negative β
H_a	False positive α	True positive $1 - \beta$

²See Wikipedia’s article for more details on one-tail versus two-tail tests: https://en.wikipedia.org/wiki/One-_and_two-tailed_tests

This leads to two types of errors:

- The **type-I error rejects H_0 when it is true**, also called *false positive*. This corresponds to claiming the superiority of an algorithm over another when there is no true difference. Note that we call both the significance level and the probability of type-I error α because they both refer to the same concept. Choosing a significance level of α enforces a probability of type-I error α , under the assumptions of the statistical test.
- The **type-II error fails to reject H_0 when it is false**, also called *false negative*. This corresponds to missing the opportunity to publish an article when there was actually something to be found.

Message 1:

- In the two-tail case, the null hypothesis H_0 is $\mu_{\text{diff}} = 0$. The alternative hypothesis H_a is $\mu_{\text{diff}} \neq 0$.
- $p\text{-value} = P(X_{\text{diff}} \geq \bar{x}_{\text{diff}} | H_0)$.
- A difference is said *statistically significant* when a statistical test passed. One can reject the null hypothesis when 1) $p\text{-value} < \alpha$; 2) CI_1 does not contain 0; 3) CI_2 does not contain \bar{x}_{diff} .
- *statistically significant* does not refer to the absolute truth. Two types of error can occur. Type-I error rejects H_0 when it is true. Type-II error fails to reject H_0 when it is false.
- The rate of false positive is 1 out of 20 for $\alpha = 0.05$. It grows linearly with the number of experiment N_E . Correction procedures can be applied to correct for multiple comparisons.

3 Choice of the appropriate statistical test

In statistics, a difference cannot be proven with 100% confidence. To show evidence for a difference, we use statistical tests. All statistical tests make assumptions that allow them to evaluate either the p -value or one of the confidence intervals described in the Section 2. The probability of the two error types must be constrained, so that the statistical test produces reliable conclusions. In this section we present two statistical tests for difference testing. As recommended in Henderson et al. (2017), the two-sample t-test and the bootstrap confidence interval test can be used for this purpose³.

³Henderson et al. also advised for the **Kolmogorov-Smirnov test** which tests whether two samples comes from the same distribution. This test should not be used to compare RL algorithms because it is unable to prove any order relation.

3.1 T-test and Welch’s t-test

We want to test the hypothesis that two populations have equal means (null hypothesis H_0). A 2-sample t-test can be used when the variances of both populations (both algorithms) are assumed equal. However, this assumption rarely holds when comparing two different algorithms (e.g. DDPG vs TRPO). In this case, an adaptation of the 2-sample t-test for unequal variances called Welch’s t -test should be used (Welch, 1947). Both tests are strictly equivalent when the standard deviations are equal. T -tests make a few assumptions:

- The scale of data measurements must be continuous and ordinal (can be ranked). This is the case in RL.
- Data is obtained by collecting a representative sample from the population. This seem reasonable in RL.
- Measurements are independent from one another. This seems reasonable in RL.
- Data is normally-distributed, or at least bell-shaped. The normal law being a mathematical concept involving infinity, nothing is ever perfectly normally distributed. Moreover, measurements of algorithm performances might follow multi-modal distributions. In Section, 5, we investigate the effects of deviations from normality.

Under these assumptions, one can compute the t -statistic t and the degree of freedom ν for the Welch’s t -test as estimated by the Welch–Satterthwaite equation, such as:

$$t = \frac{x_{\text{diff}}}{\sqrt{\frac{s_1^2}{N_1} + \frac{s_2^2}{N_2}}}, \quad \nu \approx \frac{\left(\frac{s_1^2}{N_1} + \frac{s_2^2}{N_2}\right)^2}{\frac{s_1^4}{N_1^2(N_1-1)} + \frac{s_2^4}{N_2^2(N_2-1)}}, \quad (4)$$

with $x_{\text{diff}} = x_1 - x_2$; s_1, s_2 the empirical standard deviations of the two samples, and N_1, N_2 their sizes. Sample sizes are assumed equal ($N_1 = N_2 = N$) thereafter. The t -statistics are assumed to follow a t -distribution, which is bell-shaped and whose width depends on the degree of freedom. The higher this degree, the thinner the distribution.

Figure 2 helps making sense of these concepts. It represents the distribution of the t -statistics corresponding to X_{diff} , under H_0 (left distribution) and under H_a (right distribution). H_0 assumes $\mu_{\text{diff}} = 0$, the distribution is therefore centered on 0. H_a assumes a (positive) difference $\mu_{\text{diff}} = \epsilon$, the distribution is therefore shifted by the t -value corresponding to ϵ , t_ϵ . Note that we consider the one-tail case here, and test for a positive difference.

A t -distribution is defined by its *probability density function* $T_{distrib}^\nu(\tau)$ (left curve in Figure 2), which is parameterized by ν . The *cumulative distribution function* $CDF_{H_0}(t)$ is the function evaluating the area under $T_{distrib}^\nu(t)$ from $\tau = -\infty$ to $\tau = t$. This allows to write:

$$p\text{-value} = 1 - CDF_{H_0}(t) = 1 - \int_{-\infty}^t T_{distrib}^\nu(\tau) \cdot d\tau. \quad (5)$$

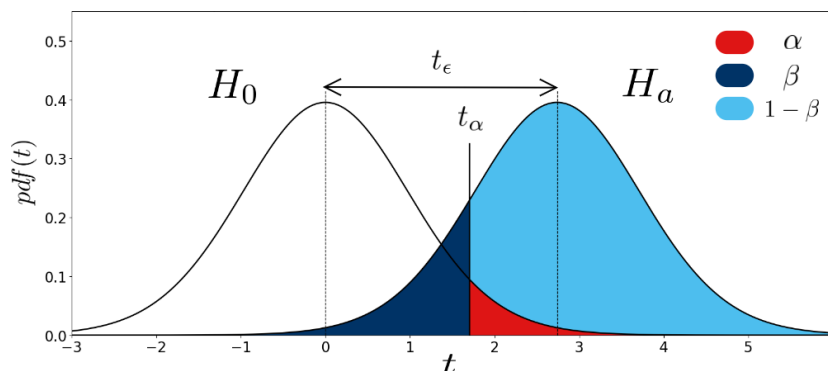


Figure 2: Representation of H_0 and H_a under the t -test assumptions. Areas under the distributions represented in red, dark blue and light blue correspond to the probability of type-I error α , type-II error β and the statistical power $1 - \beta$ respectively.

In Figure 2, t_α represents the critical t -value to satisfy the significance level α in the one-tail case. When $t = t_\alpha$, $p\text{-value} = \alpha$. When $t > t_\alpha$, the p -value is lower than α and the test rejects H_0 . On the other hand, when t is lower than t_α , the p -value is superior to α and the test fails to reject H_0 . As can be seen in the figure, setting the threshold at t_α might also cause an error of type-II. The rate of this error (β) is represented by the dark blue area: under the hypothesis of a true difference ϵ (under H_a , right distribution), we fail to reject H_0 when t is inferior to t_α . β can therefore be computed mathematically using the CDF :

$$\beta = CDF_{H_a}(t_\alpha) = \int_{-\infty}^{t_\alpha} T_{distrib}^\nu(\tau - t_\epsilon) \cdot d\tau. \quad (6)$$

Using the translation properties of integrals, we can rewrite β as:

$$\beta = CDF_{H_0}(t_\alpha - t_\epsilon) = \int_{-\infty - t_\epsilon = -\infty}^{t_\alpha - t_\epsilon} T_{distrib}^\nu(\tau) \cdot d\tau. \quad (7)$$

The procedure to run a Welch's t -test given two samples (x_1, x_2) is:

- Computing the degree of freedom ν and the t -statistic t based on s_1 , s_2 , N and \bar{x}_{diff} .
- Looking up the t_α value for the degree of freedom ν in a t -table⁴ or by

⁴Available at <http://www.sjsu.edu/faculty/gerstman/StatPrimer/t-table.pdf>.

evaluating the inverse of the *CDF* function in α .

- Compare the t -statistic to t_α . The difference is said statistically significant (H_0 rejected) at level α when $t \geq t_\alpha$.

Note that $t < t_\alpha$ does not mean there is no difference between the performances of both algorithms. It only means there is not enough evidence to prove its existence with $100 \cdot (1 - \alpha)\%$ confidence (it might be a type-II error). Noise might hinder the ability of the test to detect the difference. In this case, increasing the sample size N could help uncover the difference.

Selecting the significance level α of the t -test enforces the probability of type-I error to α . However, Figure 2 shows that decreasing this probability boils down to increasing t_α , which in turn increases the probability of type-II error β . One can decrease β while keeping α constant by increasing the sample size N . This way, the estimation \bar{x}_{diff} of $\bar{\mu}_{\text{diff}}$ gets more accurate, which translates in thinner distributions in the figure, resulting in a smaller β . The next section gives standard guidelines to select N so as to meet requirements for both α and β .

3.2 Bootstrapped confidence intervals

Bootstrapped confidence interval is a method that does not make any assumption on the distribution of X_{diff} . It estimates the confidence interval CI_1 for μ_{diff} , given a sample x_{diff} characterized by its empirical mean \bar{x}_{diff} . It is done by re-sampling inside x_{diff} and by computing the mean of each newly generated sample. The test makes its decision based on whether the confidence interval of \bar{x}_{diff} contains 0 or not. It does not compute a p -value as such.

Without any assumption on the data distribution, an analytical confidence interval cannot be computed. Here, X_{diff} follows an unknown distribution F . An estimation of the confidence interval CI_1 can be computed using the *bootstrap principle*.

Let us say we have a sample x_{diff} made of N measures of performance difference. The empirical bootstrap sample x_{diff}^* of size N is obtained by sampling with replacement inside x_{diff} . The bootstrap principle then says that, for any statistic u computed on the original sample and u^* computed on the bootstrap sample, variations in u are well approximated by variations in u^* ⁵. Therefore, variations of the empirical mean such as its range can be approximated by variations of the bootstrapped samples. The bootstrap confidence interval test assumes the sample size is large enough to represent the underlying distribution correctly, although this might be difficult to achieve in practice. Deviations from this

⁵More explanations and justifications can be found in https://ocw.mit.edu/courses/mathematics/18-05-introduction-to-probability-and-statistics-spring-2014/readings/MIT18_05S14_Reading24.pdf.

assumption are discussed in Section 5. Under this assumption, the bootstrap test procedure looks like this:

- Generate B bootstrap samples of size N from the original sample x_1 of *Algo1* and B samples from from the original sample x_2 of *Algo2*.
- Compute the empirical mean for each sample: $\mu_1^1, \mu_1^2, \dots, \mu_1^B$ and $\mu_2^1, \mu_2^2, \dots, \mu_2^B$
- Compute the differences $\mu_{\text{diff}}^{1:B} = \mu_1^{1:B} - \mu_2^{1:B}$
- Compute the bootstrapped confidence interval at $100 \cdot (1 - \alpha)\%$. This is basically the range between the $100 \cdot \alpha/2$ and $100 \cdot (1 - \alpha)/2$ percentiles of the vector $\mu_{\text{diff}}^{1:B}$ (e.g. for $\alpha = 0.05$, the range between the 2.5th and the 97.5th percentiles).

The number of bootstrap samples B should be chosen large (e.g. > 1000). If the confidence interval does not contain 0, it means that one can be confident at $100 \cdot (1 - \alpha)\%$ that the difference is either positive (both bounds positive) or negative (both bounds negative), thus, that there is a statistically significant difference between the performances of both algorithms⁶.

Example 1 (continued). Here, the type-I error requirement is set to $\alpha = 0.05$. Running the Welch’s t -test and the bootstrap confidence interval test with two samples (x_1, x_2) of 5 seeds each leads to a p -value of 0.031 and a bootstrap confidence interval such that $P(\mu_{\text{diff}} \in [259, 1564]) = 0.05$. Since the p -value is below the significance level α and the CI_1 confidence interval does not include 0, both test passed. This means both tests found a significant difference between the performances of *Algo1* and *Algo2* with a 95% confidence. There should have been only 5% chance to conclude a significant difference if it did not exist.

In fact, we did encounter a type-I error. We know this for sure because ***Algo 1* and *Algo 2* were the exact same algorithm.** They are both the canonical implementation of DDPG (Lillicrap et al., 2015) from the OpenAI baselines (Dhariwal et al., 2017). The first conclusion was wrong, we committed a type-I error, rejecting H_0 when it was true. We knew this could happen with probability $\alpha = 0.05$. Section 5 shows that this probability might have been under-evaluated because of the assumptions made by the statistical tests.

⁶An implementation of the bootstrap confidence interval test can be found at <https://github.com/facebookincubator/bootstrapped>.

Message 2:

- T -tests assume t -distributions of the t -values. Under some assumptions, they can compute analytically the p -value and the confidence interval CI_2 at level α .
- The Welch’s t -test does not assume both algorithms have equal variances but the t -test does.
- The bootstrapped confidence interval test does not make assumptions on the performance distribution and estimates empirically the confidence interval CI_1 at level α .
- Selecting a test with a significance level α enforces a type-I error α when the assumptions of the test are verified.

4 In theory: power analysis for the choice of the sample size

In the Section 3, we saw that α was enforced by the choice of the significance level in the test implementation. The second type of error β must now be estimated. β is the probability to fail to reject H_0 when H_a is true. When the effect size ϵ and the probability of type-I error α are kept constant, β is a function of the sample size N . Choosing N so as to meet requirements on β is called *statistical power analysis*. It answers the question: *what sample size do I need to have $1 - \beta$ chance to detect an effect size ϵ , using a test with significance level α ?* The next paragraphs present guidelines to choose N in the context of a Welch’s t -test. As we saw in Section 3.1, β can be analytically computed as:

$$\beta = CDF_{H_0}(t_\alpha - t_\epsilon) = \int_{-\infty - t_\epsilon = -\infty}^{t_\alpha - t_\epsilon} T_{distrib}^\nu(\tau) \cdot d\tau, \quad (8)$$

where CDF_{H_0} is the cumulative distribution function of a t -distribution centered on 0, t_α is the critical value for significance level α and t_ϵ is the t -value corresponding to an effect size ϵ . In the end, β depends on α , ϵ , (s_1, s_2) the empirical standard deviations computed on two samples (x_1, x_2) and the sample size N .

Example 2. To illustrate, we compare two DDPG variants: one with action perturbations (*Algo1*) (Lillicrap et al., 2015), the other with parameter perturbations (*Algo2*) (Plappert et al., 2017). Both algorithms are evaluated in the Half-Cheetah environment from the OpenAI Gym framework (Brockman et al., 2016).

4.1 Step 1 - Running a pilot study

To compute β , we need estimates of the standard deviations of the two algorithms (s_1, s_2) . In this step, the algorithms are run in the environment to gather two samples x_1 and x_2 of size n . From there, we can compute the empirical means (\bar{x}_1, \bar{x}_2) and standard deviations (s_1, s_2) .

Example 2 (continued). Here we run both algorithms with $n = 5$. We find empirical means $(\bar{x}_1, \bar{x}_2) = (3523, 4905)$ and empirical standard deviations $(s_1, s_2) = (1341, 990)$ for *Algo1* (blue) and *Algo2* (red) respectively. From Figure 3, it seems there is a slight difference in the mean performances $\bar{x}_{\text{diff}} = \bar{x}_2 - \bar{x}_1 > 0$.

Running preliminary statistical tests at level $\alpha = 0.05$ lead to a p -value of 0.1 for the Welch’s t -test, and a bootstrapped confidence interval of $CI_1 = [795, 2692]$ for the value of $\bar{x}_{\text{diff}} = 1382$. The Welch’s t -test does not reject H_0 ($p\text{-value} > \alpha$) but the bootstrap test does ($0 \notin CI_1$). One should compute β to estimate the chance that the Welch’s t -test missed an underlying performance difference (type-II error).

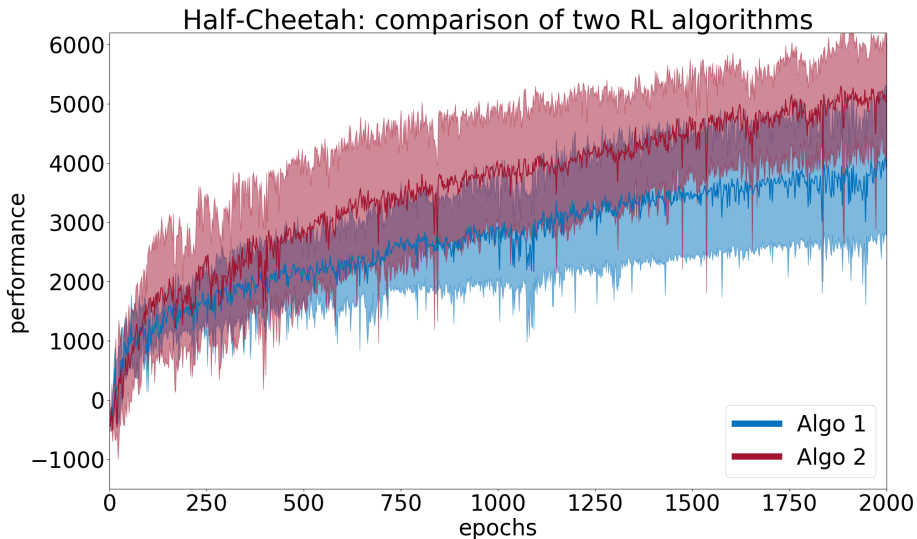


Figure 3: DDPG with action perturbation versus DDPG with parameter perturbation tested in Half-Cheetah. Mean and 95% confidence interval computed over 5 seeds are reported. The figure shows a small difference in the empirical mean performances.

4.2 Step 2 - Choosing the sample size

Given a statistical test (Welch's t -test), a significance level α (e.g. $\alpha = 0.05$) and empirical estimations of the standard deviations of *Algo1* and *Algo2* (s_1, s_2), one can compute β as a function of the sample size N and the effect size ϵ one wants to be able to detect.

Example 2 (continued). For N in $[2, 50]$ and ϵ in $[0.1, \dots, 1] \times \bar{x}_1$, we compute t_α and ν using the formulas given in Section 3.1, as well as t_ϵ for each ϵ . Finally, we compute the corresponding probability of type-II error β using Equation 8. Figure 4 shows the evolution of β as a function of N for the different ϵ . Considering the semi-dashed black line for $\epsilon = \bar{x}_{\text{diff}} = 1382$, we find $\beta = 0.51$ for $N = 5$: there is 51% chance of making a type-II error when trying to detect an effect $\epsilon = 1382$. To meet the requirement $\beta = 0.2$, N should be increased to $N = 10$ ($\beta = 0.19$).

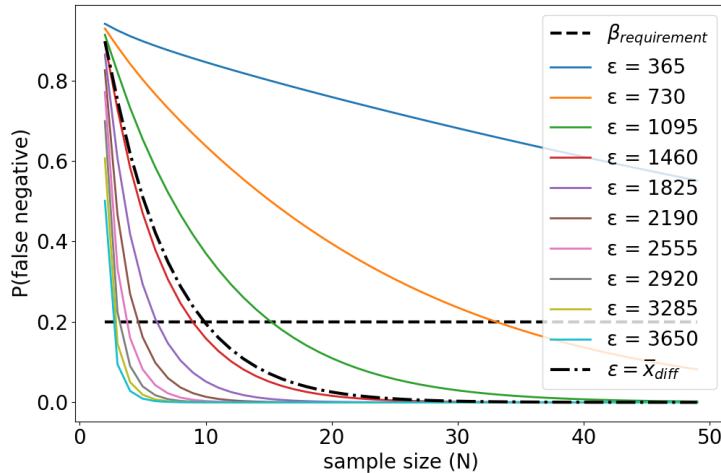


Figure 4: Evolution of the probability of type-II error as a function of the sample size N for various effect sizes ϵ , when $(s_1, s_2) = (1341, 990)$ and $\alpha = 0.05$. The requirement 0.2 is represented by the horizontal dashed black line. The curve for $\epsilon = \bar{x}_{\text{diff}}$ is represented by the semi-dashed black line.

In our example, we find that $N = 10$ was enough to be able to detect an effect size $\epsilon = 1382$ with a Welch's t -test, using significance level α and using empirical estimations $(s_1, s_2) = (1341, 990)$. However, let us keep in mind that these computations use various approximations (ν, s_1, s_2) and make assumptions about the shape of the t -values distribution. Section 5 investigates the influence of these assumptions.

4.3 Step 3 - Running the statistical tests

Both algorithms should be run so as to obtain a sample x_{diff} of size N . The statistical tests can be applied.

Example 2 (continued). Here, we take $N = 10$ and run both the Welch’s t -test and the bootstrap test. We now find empirical means $(\bar{x}_1, \bar{x}_2) = (3690, 5323)$ and empirical standard deviations $(s_1, s_2) = (1086, 1454)$ for *Algo1* and *Algo2* respectively. Both tests rejected H_0 , with a p -value of 0.0037 for the Welch’s t -test and a confidence interval for the difference $\mu_{\text{diff}} \in [732, 2612]$ for the bootstrap test. Both tests passed. In Figure 5, plots for $N = 5$ and $N = 10$ can be compared. With a larger number of seeds, the difference that was not found significant with $N = 5$ is now more clearly visible. With a larger number of seeds, the estimate \bar{x}_{diff} is more robust, more evidence is available to support the claim that *Algo2* outperforms *Algo1*, which translates to tighter confidence intervals represented in the figures.

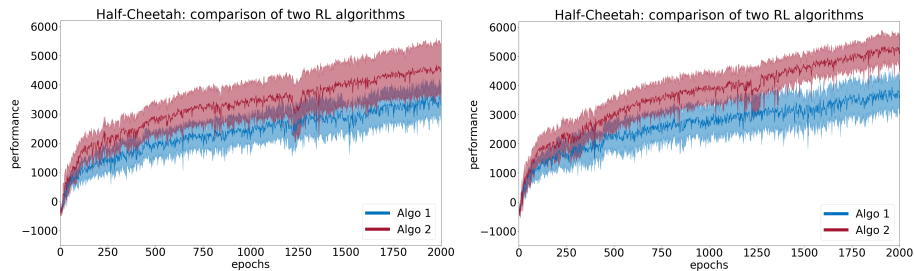


Figure 5: Performance of DDPG with action perturbation (*Algo1*) and parameter perturbation (*Algo2*) with $N = 5$ seeds (left) and $N = 10$ seeds (right). The 95% confidence intervals on the right are smaller, because more evidence is available (N larger). The underlying difference appears when N grows.

Message 3: Given a sample size N , a minimum effect size to detect ϵ and a requirement on type-I error α the probability of type-II error β can be computed. This computation relies on the assumptions of the t -test. The sample size N should be chosen so as to meet the requirements on β .

5 In practice: influence of deviations from assumptions

Under their respective assumptions, the t -test and bootstrap test enforce the probability of type-I error to the selected significance level α . These assumptions should be carefully checked, if one wants to report the probability of errors accurately. First, we propose to compute an empirical evaluation of the type-I error based on experimental data, and show that: 1) the bootstrap test is sensitive to small sample sizes; 2) the t -test might slightly under-evaluate the type-I error for non-normal data. Second, we show that inaccuracies in the estimation of the empirical standard deviations s_1 and s_2 due to low sample size might lead to large errors in the computation of β , which in turn leads to under-estimate the sample size required for the experiment.

5.1 Empirical estimation of the type-I error

Remember, type-I errors occur when the null hypothesis (H_0) is rejected in favor of the alternative hypothesis (H_a), H_0 being correct. Given the sample size N , the probability of type-I error can be estimated as follows:

- Run twice this number of trials ($2 \times N$) for a given algorithm. This ensures that H_0 is true because all measurements come from the same distribution.
- Get average performance over two randomly drawn splits of size N . Consider both splits as samples coming from two different algorithms.
- Test for the difference of both fictive algorithms and record the outcome.
- Repeat this procedure T times (e.g. $T = 1000$)
- Compute the proportion of time H_0 was rejected. This is the empirical evaluation of α .

Example 3 We use *Algo1* from Example 2. From 42 available measures of performance, the above procedure is run for N in $[2, 21]$. Figure 6 presents the results. For small values of N , empirical estimations of the false positive rate are much larger than the supposedly enforced value $\alpha = 0.05$.

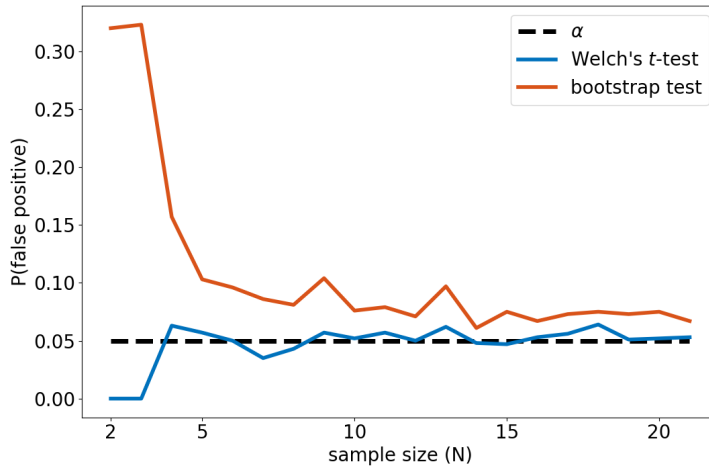


Figure 6: Empirical estimations of the false positive rate on experimental data (Example 3) when N varies, using the Welch’s t -test (blue) and the bootstrap confidence interval test (orange).

In our experiment, the bootstrap confidence interval test should not be used with small sample sizes (< 10). Even in this case, the probability of type-I error ($\approx 10\%$) is under-evaluated by the test (5%). The Welch’s t -test controls for this effect, because the test is much harder to pass when N is small (due to the increase of t_α). However, the true (empirical) false positive rate might still be slightly under-evaluated. In this case, we might want to set the significance level to $\alpha < 0.05$ to make sure the true positive rate stays below 0.05. In the bootstrap test, the error is due to the inability of small samples to correctly represent the underlying distribution, which impairs the enforcement of the false positive rate to the significance level α . Concerning the Welch’s t -test, this might be due to the non-normality of our data (whose histogram seems to reveal a bimodal distribution). In Example 1, we used $N = 5$ and encountered a type-I error. We can see on the Figure 6 that the probability of this to happen was around 10% for the bootstrap test and above 5% for the Welch’s t -test.

5.2 Influence of the empirical standard deviations

The Welch’s t -test computes t -statistics and the degree of freedom ν based on the sample size N and the empirical estimations of standard deviations s_1 and s_2 . When N is low, estimations s_1 and s_2 under-estimate the true standard deviation in average. Under-estimating (s_1, s_2) leads to smaller ν and lower t_α , which in turn leads to lower estimations of β . Finally, finding lower β leads to the selection of smaller sample size N to meet β requirements. Let us investigate how big this effect can be. In Figure 7, one estimates the standard deviation of a normally distributed variable $\mathcal{N}(0, 1)$. The empirical estimation s is quite variable and underestimates $\sigma = 1$ in average.

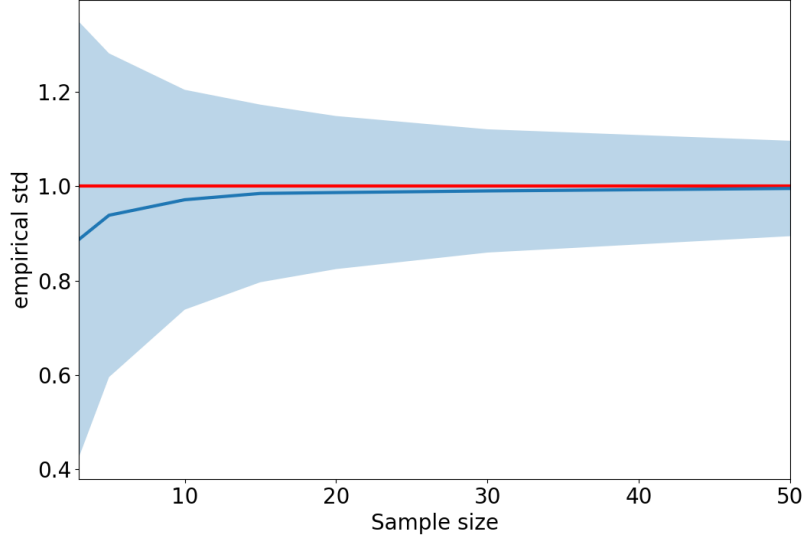


Figure 7: Empirical standard deviation of $X \sim \mathcal{N}(0, 1)$. The true standard deviation $\sigma = 1$ is represented in red. Mean \pm std are shown.

We consider estimations of the false negative rate as a function of N when comparing two normal distributions ($\sigma = 1$), one centered on 3, the other on $3 + \epsilon$. When we select $n = 5$ for a preliminary study and compute estimations (s_1, s_2) from this sample, our average error is $\text{mean}(s_{n=5}) = -0.059$ (see above Figure 7). One could also make larger errors: $\text{mean}(s_{n=5}) - \text{std}(s_{n=5}) = -0.40$ from the same figure.

Figure 8 shows the effect of an error of 0.40 on the evaluation of β . One can see that, if we want to detect an effect size $\epsilon = 0.9$ (green curve) and meet a requirement $\beta = 0.2$, one would choose $N = 17$ when standard deviations are correctly estimated (left) and $N = 7$ when they are under-evaluated. When the number of samples n available in the preliminary study to compute (s_1, s_2) grows, the under-estimation reduces in average and in the worst case. This, in turn, reduces the inaccuracy in the estimation of β and therefore in the required N . Another solution is to systematically choose the sample size larger than what is prescribed by the computation of β .

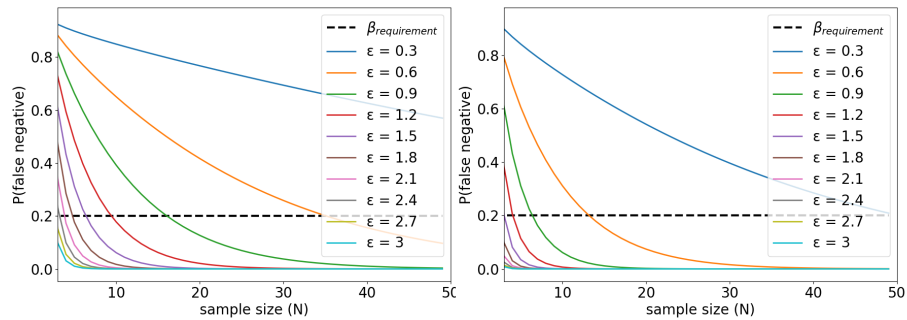


Figure 8: Evolution of the probability of type-II error as a function of the sample size N and the effect size ϵ , when $(s_1, s_2) = (1 - error, 1 - error)$ and $\alpha = 0.05$. Left: $error = 0$, this is the ideal case. Right: $error = 0.40$, a large error that can be made when evaluating s over $n = 5$ samples. The compared distributions are normal, one is centered on 3, the other on $3 + \epsilon$.

Message 4:

- One should not blindly believe in statistical tests results. These tests are based on assumptions that are not always reasonable.
- α must be empirically estimated, as the statistical tests might underestimate it, because of wrong assumptions about the underlying distributions or because of the small sample size.
- The bootstrap test evaluation of type-I error is strongly dependent on the sample size. A bootstrap test should not be used with less than 20 samples.
- The inaccuracies in the estimation of the standard deviations of the algorithms (s_1, s_2) , due to small sample sizes n in the preliminary study, lead to under-estimate the sample size N required to meet requirements in type-II errors.

6 Conclusion

In this paper, we outlined the statistical problems that arise when comparing the performance of two RL algorithms. We defined type-I, type-II errors and proposed appropriate statistical tests to test for performance difference. Finally and most importantly, we detailed how to pick the right number of random seeds (the sample size) so as to reach the requirements in both error types.

The most important part is what came after. We challenged the hypotheses made by the Welch’s t -test and the bootstrap test and found several problems. First, we showed significant difference between empirical estimations of the false positive rate in our experiment and the theoretical values supposedly enforced by both tests. As a result, the bootstrap test should not be used with less than $N = 20$ samples and tighter significance level should be used to enforce a reasonable false positive rate (< 0.05). Second, we show that the estimation of the sample size N required to meet requirements in type-II error were strongly dependent on the accuracy of (s_1, s_2) . To compensate the under-estimation of N , N should be chosen systematically larger than what the power analysis prescribes.

Final recommendations

- Use the Welch’s t -test over the bootstrap confidence interval test.
- Set the significance level of a test to lower values ($\alpha < 0.05$) so as to make sure the probability of type-I error (empirical α) keeps below 0.05.
- Correct for multiple comparisons in order to avoid the linear growth of false positive with the number of experiments.
- Use at least $n = 20$ samples in the pilot study to compute robust estimates of the standard deviations of both algorithms.
- Use larger sample size N than the one prescribed by the power analysis. This helps compensating for potential inaccuracies in the estimations of the standard deviations of the algorithms and reduces the probability of type-II errors.

Acknowledgement

This research is financially supported by the French Ministère des Armées - Direction Générale de l’Armement.

References

- Brockman, G., Cheung, V., Pettersson, L., Schneider, J., Schulman, J., Tang, J., Zaremba, W., 2016. Openai gym. arXiv preprint [arXiv:1606.01540](https://arxiv.org/abs/1606.01540).
- Cabin, R. J., Mitchell, R. J., 2000. To bonferroni or not to bonferroni: when and how are the questions. *Bulletin of the Ecological Society of America* 81 (3), 246–248.
- Dhariwal, P., Hesse, C., Klimov, O., Nichol, A., Plappert, M., Radford, A., Schulman, J., Sidor, S., Wu, Y., 2017. Openai baselines. <https://github.com/openai/baselines>.
- Henderson, P., Islam, R., Bachman, P., Pineau, J., Precup, D., Meger, D., 2017. Deep reinforcement learning that matters. arXiv preprint [arXiv:1709.06560](https://arxiv.org/abs/1709.06560).
- Islam, R., Henderson, P., Gomrokchi, M., Precup, D., 2017. Reproducibility of benchmarked deep reinforcement learning tasks for continuous control. In: *Proceedings of the ICML 2017 workshop on Reproducibility in Machine Learning (RML)*.
- Lillicrap, T. P., Hunt, J. J., Pritzel, A., Heess, N., Erez, T., Tassa, Y., Silver, D., Wierstra, D., 2015. Continuous control with deep reinforcement learning. arXiv preprint [arXiv:1509.02971](https://arxiv.org/abs/1509.02971).
- Mania, H., Guy, A., Recht, B., 2018. Simple random search provides a competitive approach to reinforcement learning. arXiv preprint [arXiv:1803.07055](https://arxiv.org/abs/1803.07055).
- Plappert, M., Houthoofd, R., Dhariwal, P., Sidor, S., Chen, R. Y., Chen, X., Asfour, T., Abbeel, P., Andrychowicz, M., 2017. Parameter space noise for exploration. arXiv preprint [arXiv:1706.01905](https://arxiv.org/abs/1706.01905).
- Rice, W. R., 1989. Analyzing tables of statistical tests. *Evolution* 43 (1), 223–225.
- Schulman, J., Levine, S., Moritz, P., Jordan, M. I., Abbeel, P., 2015. Trust region policy optimization. *CoRR*, abs/1502.05477.
- Schulman, J., Wolski, F., Dhariwal, P., Radford, A., Klimov, O., 2017. Proximal policy optimization algorithms. arXiv preprint [arXiv:1707.06347](https://arxiv.org/abs/1707.06347).
- Welch, B. L., 1947. The generalization of student’s problem when several different population variances are involved. *Biometrika* 34 (1/2), 28–35.
- Wu, Y., Mansimov, E., Liao, S., Grosse, R., Ba, J., 2017. Scalable trust-region method for deep reinforcement learning using kronecker-factored approximation. arXiv preprint [arXiv:1708.05144](https://arxiv.org/abs/1708.05144).